

Case 34

44 year old Chinese female.

Right breast lump at the 1 o'clock peri-areolar region was excised one year ago, reported as haemangioma.

Current presentation with light bruising of the skin over the same area.

Section from the right breast lump.



Singapore
General Hospital

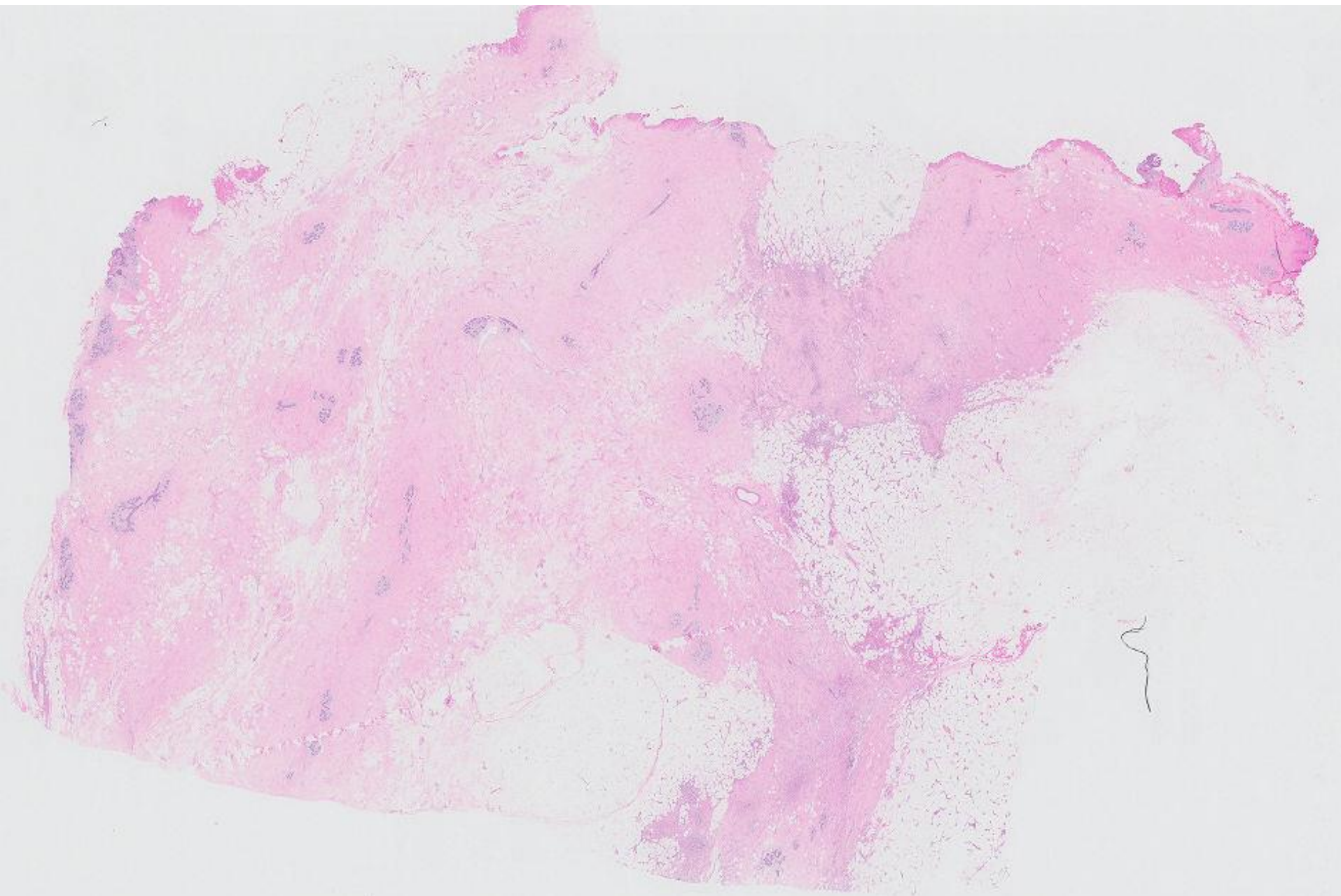
SingHealth

Division of Pathology



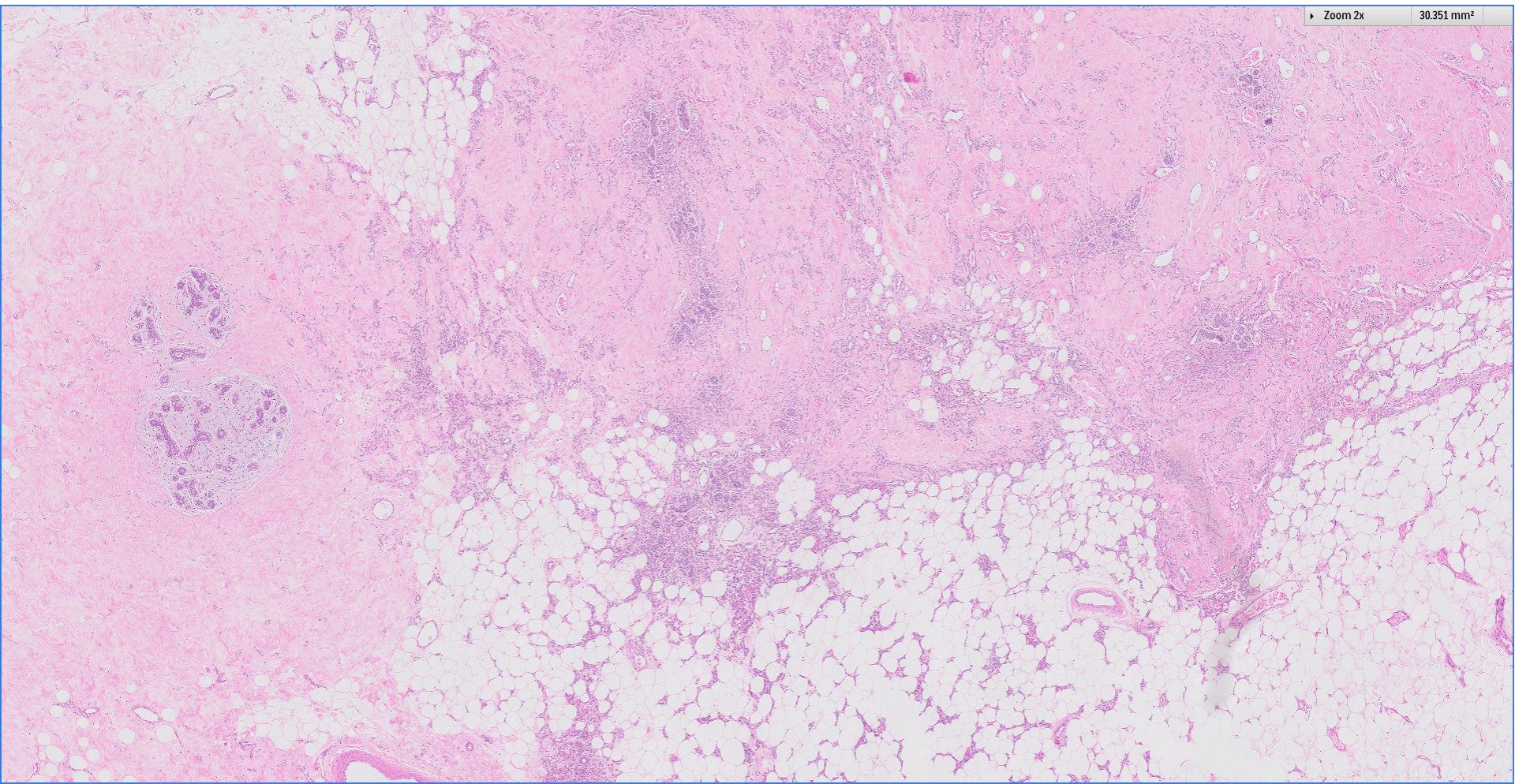
PATHOLOGY

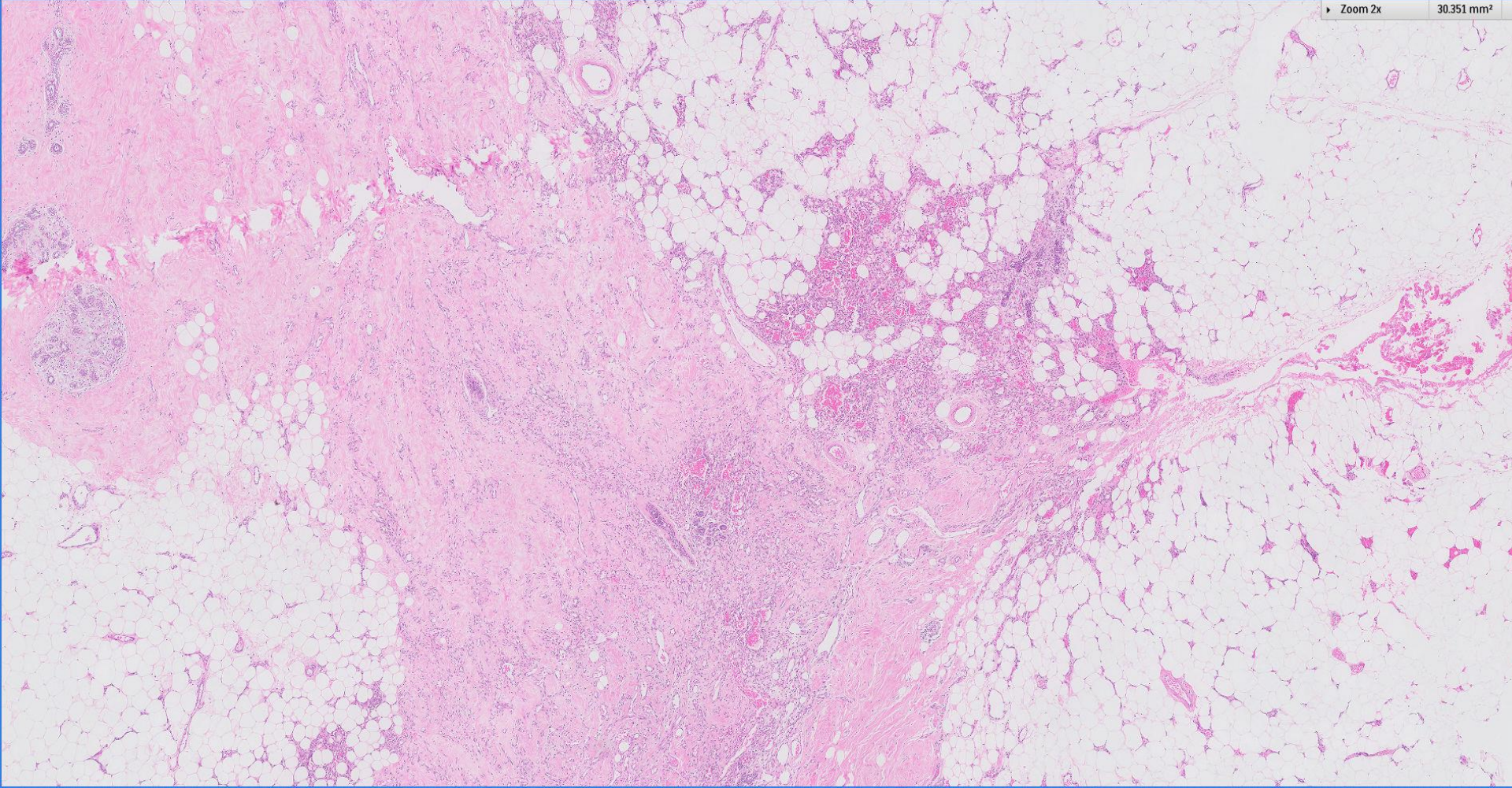


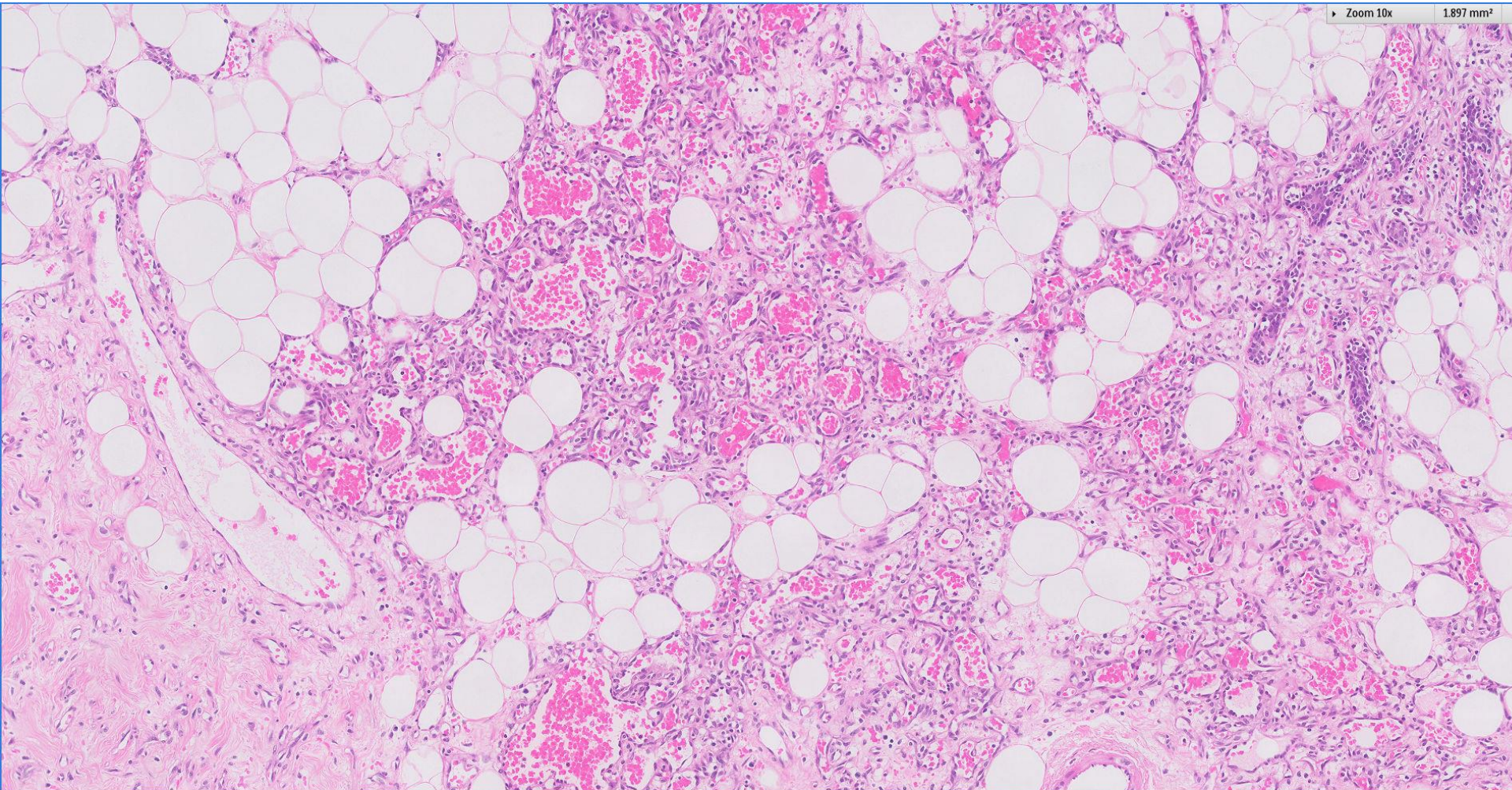


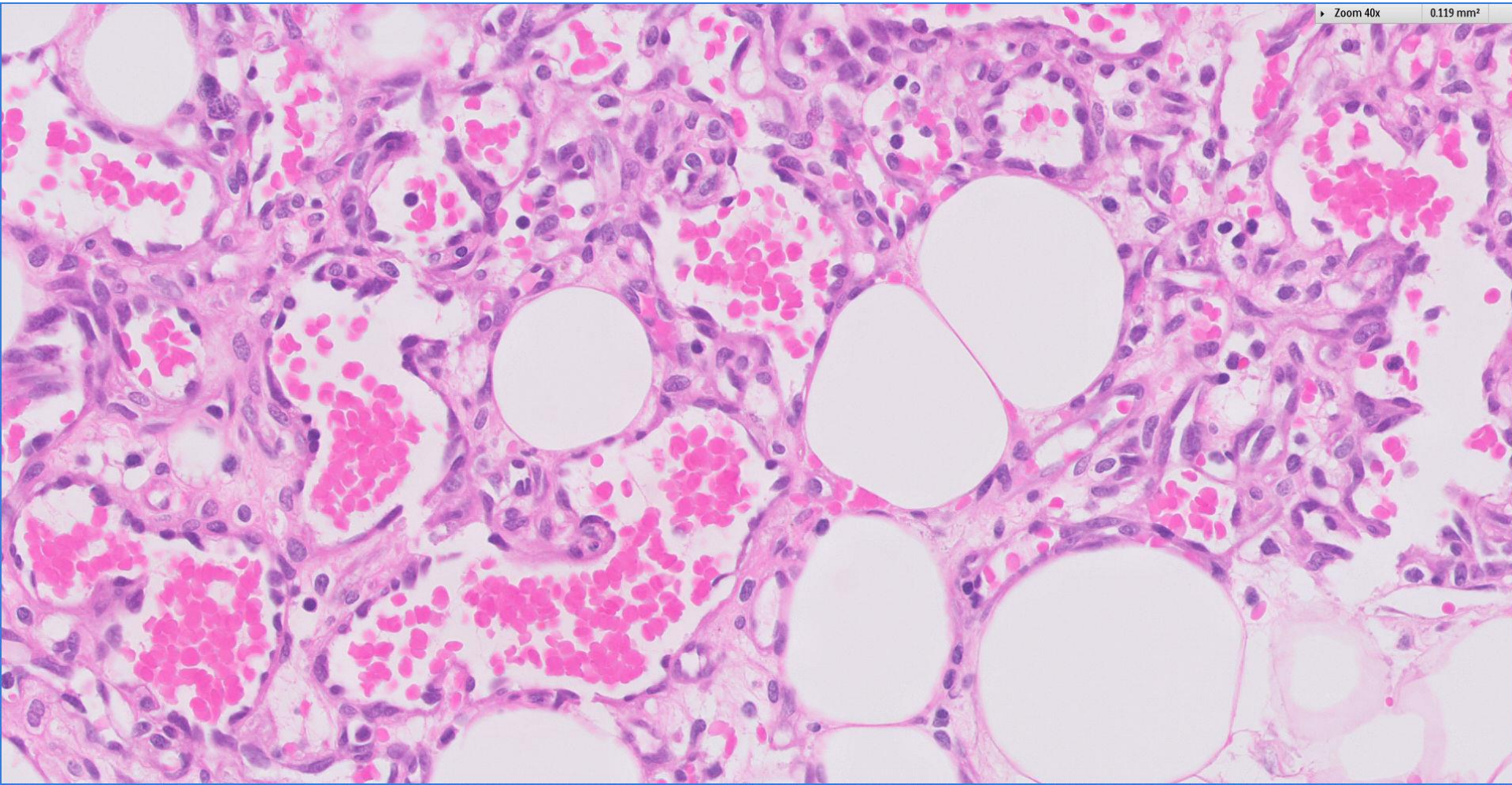
Zoom 2x

30.351 mm²



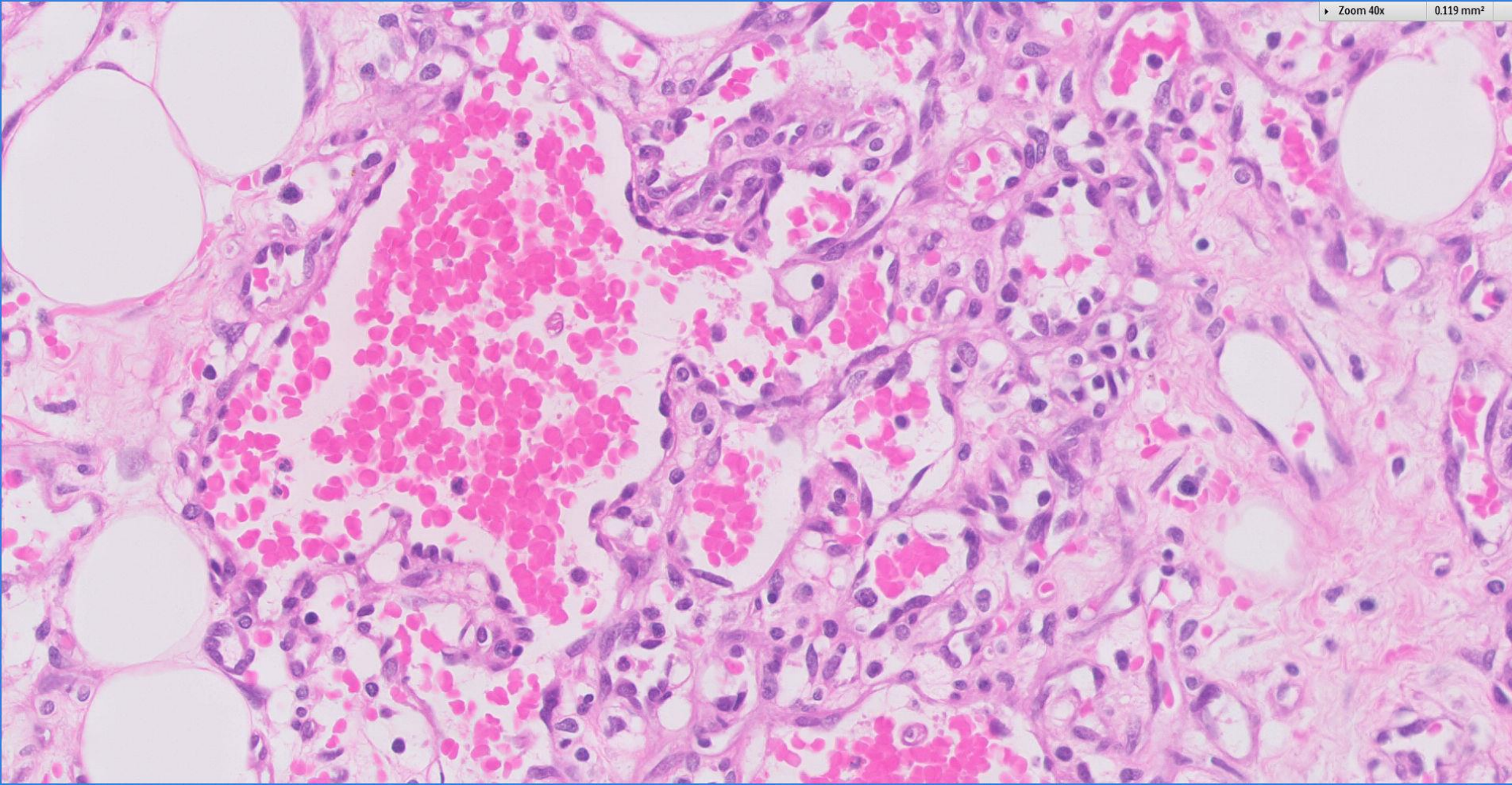






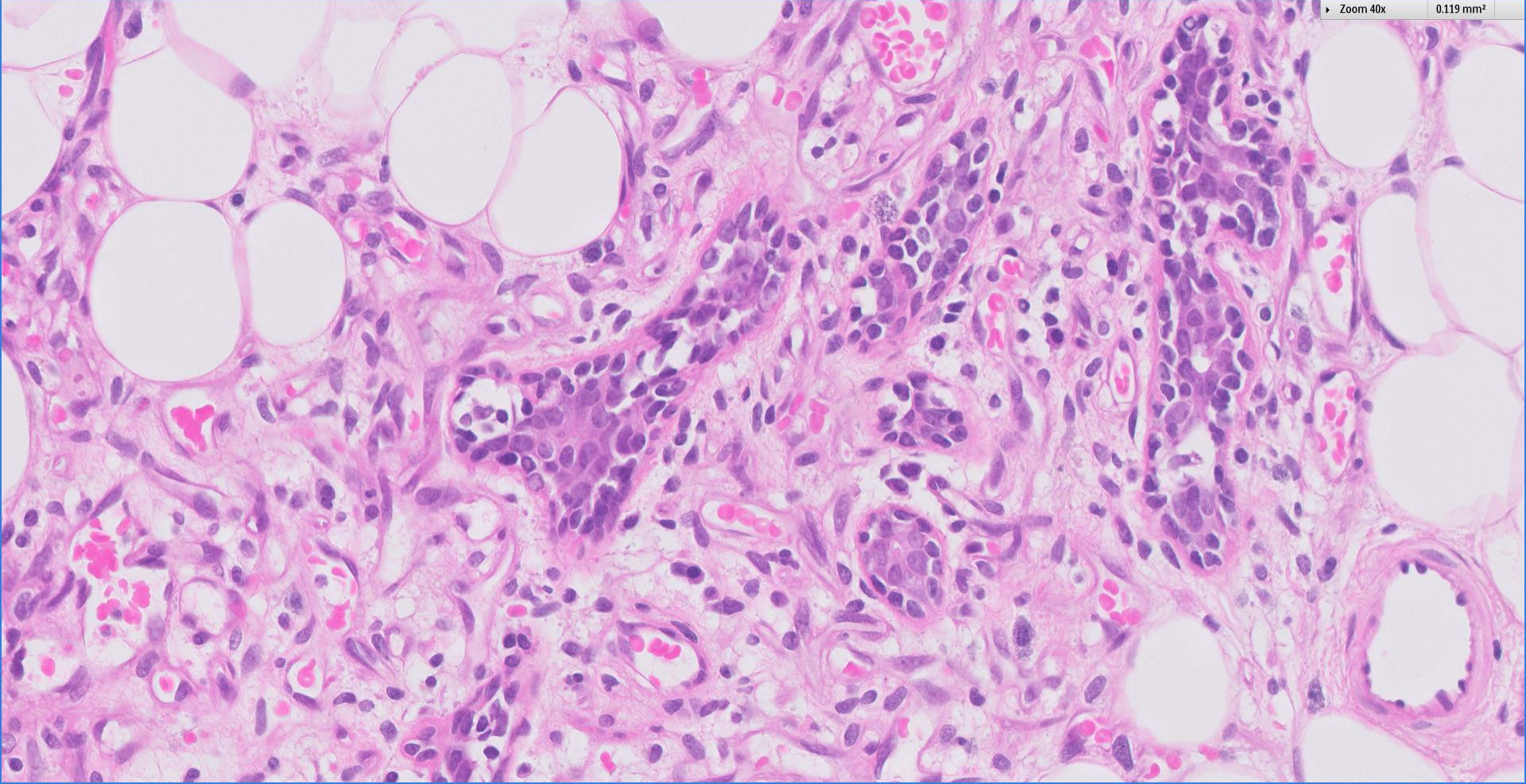
Zoom 40x

0.119 mm²



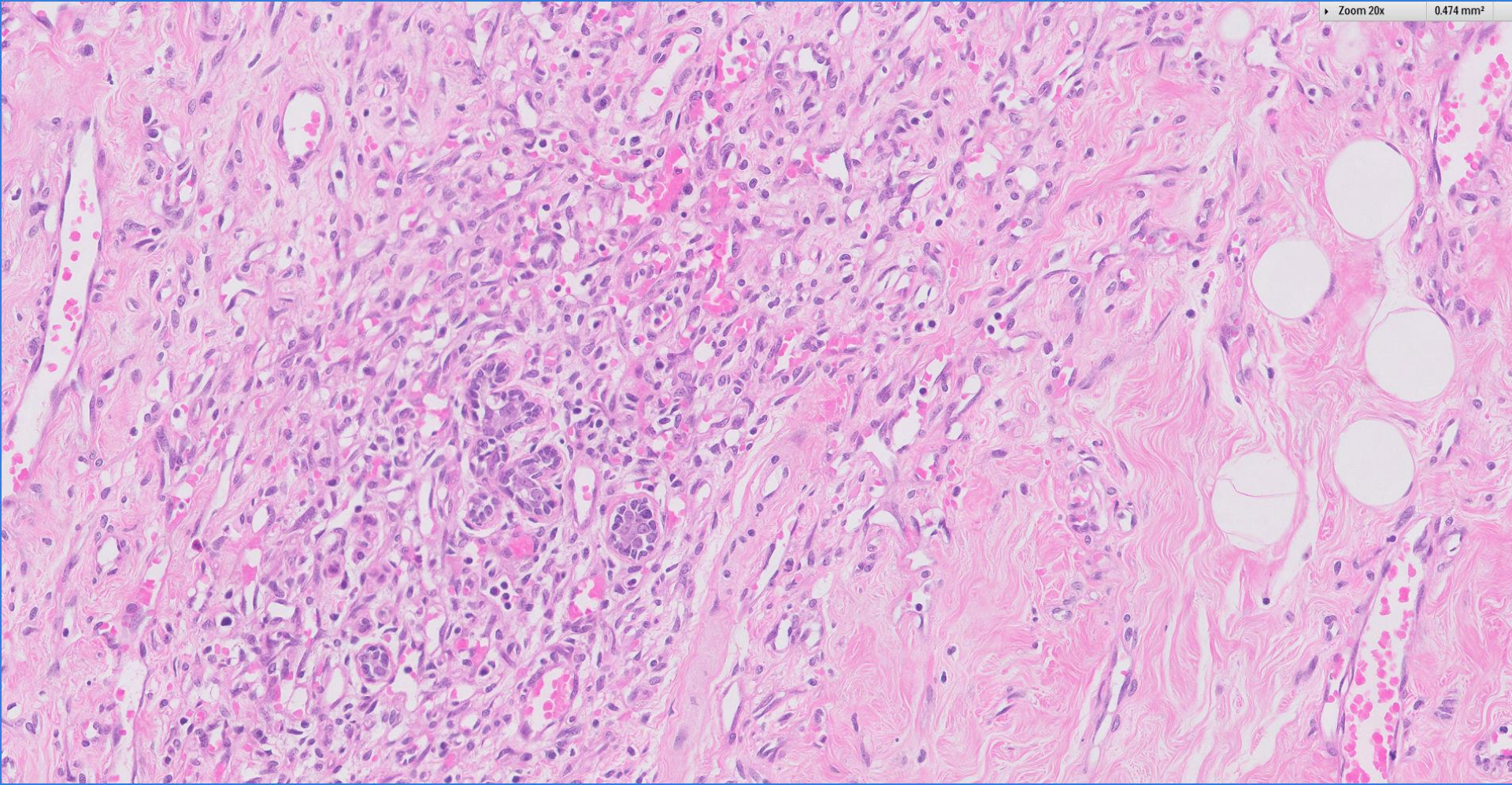
Zoom 40x

0.119 mm²



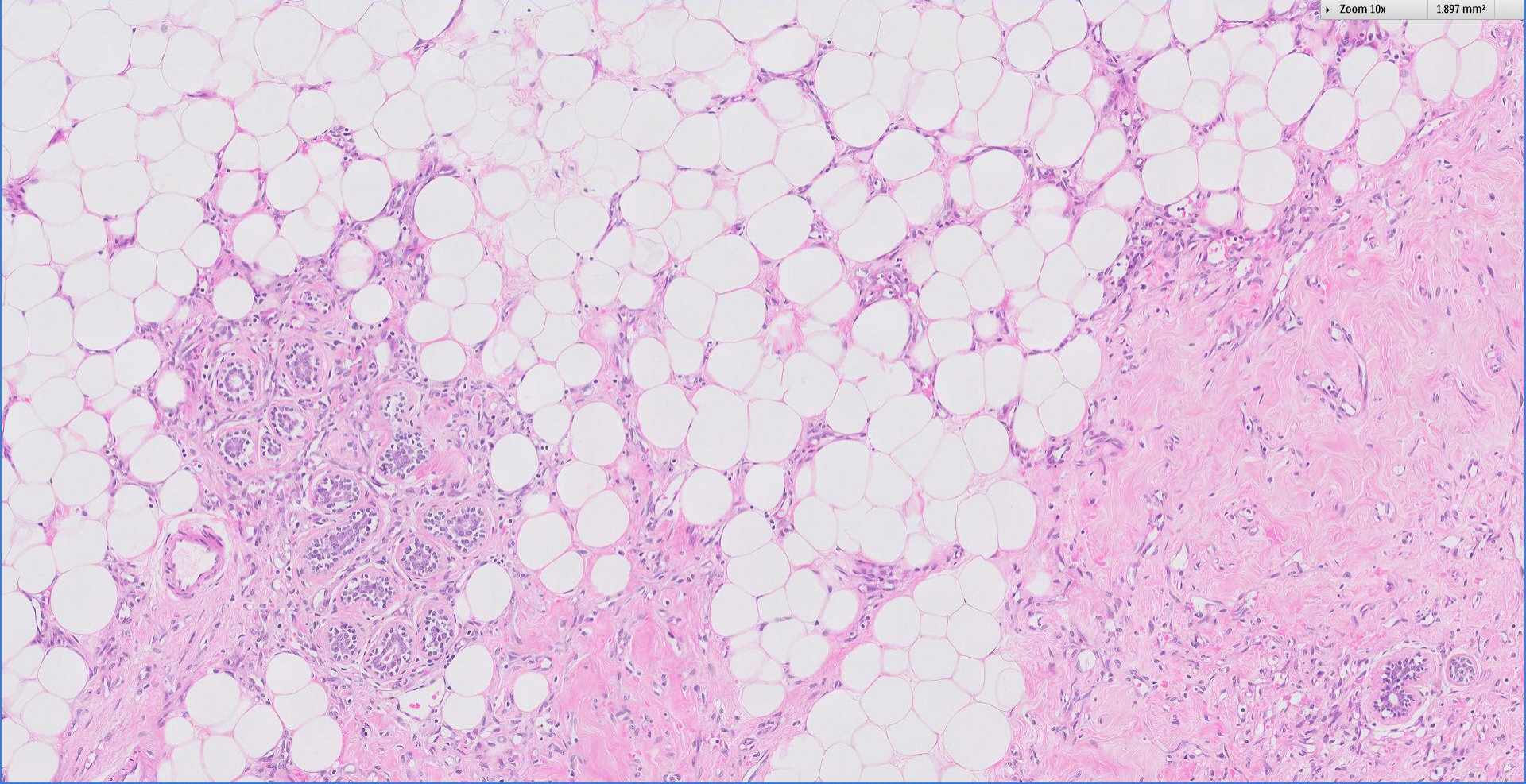
Zoom 20x

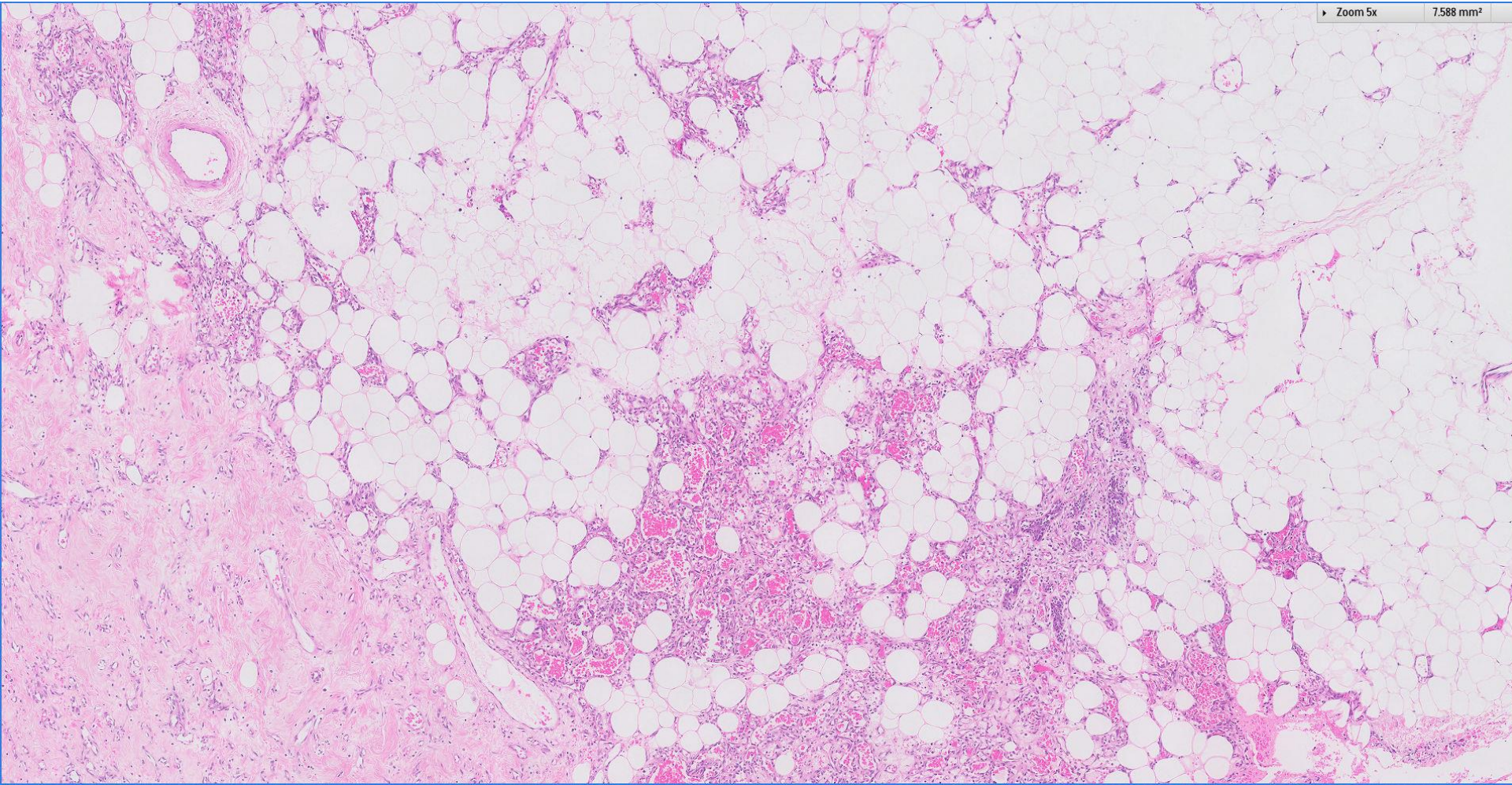
0.474 mm²



Zoom 10x

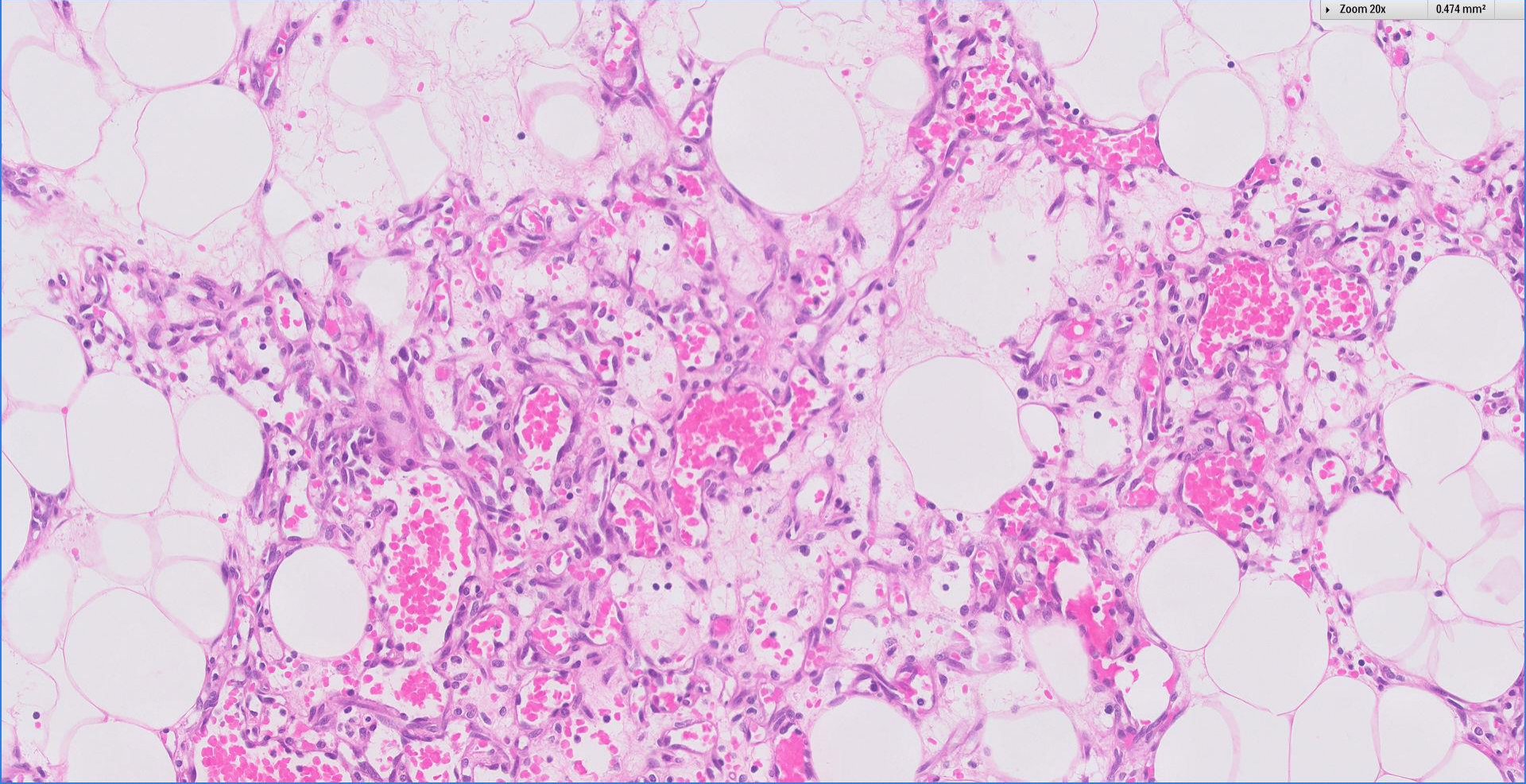
1.897 mm²





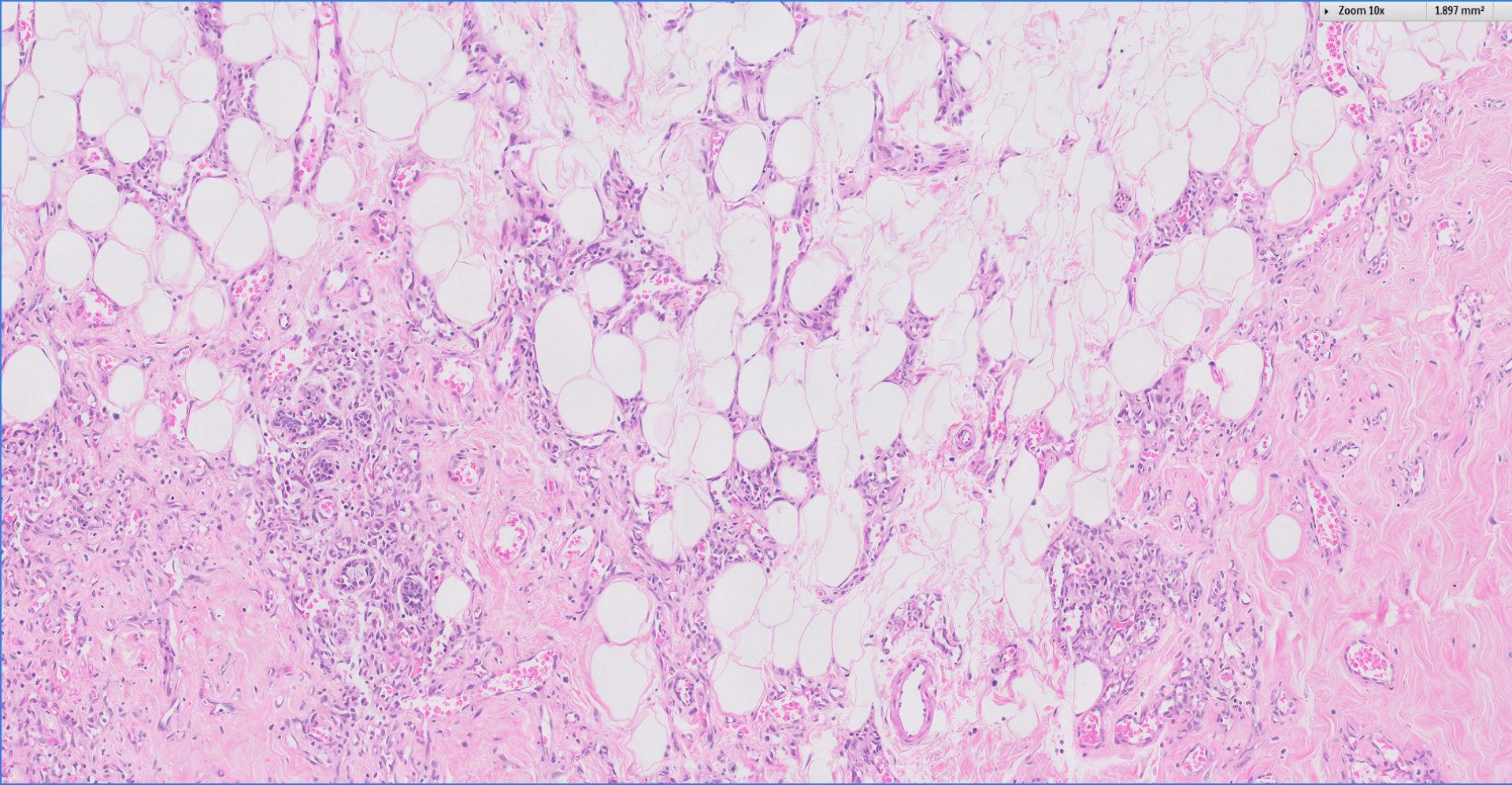
Zoom 20x

0.474 mm²

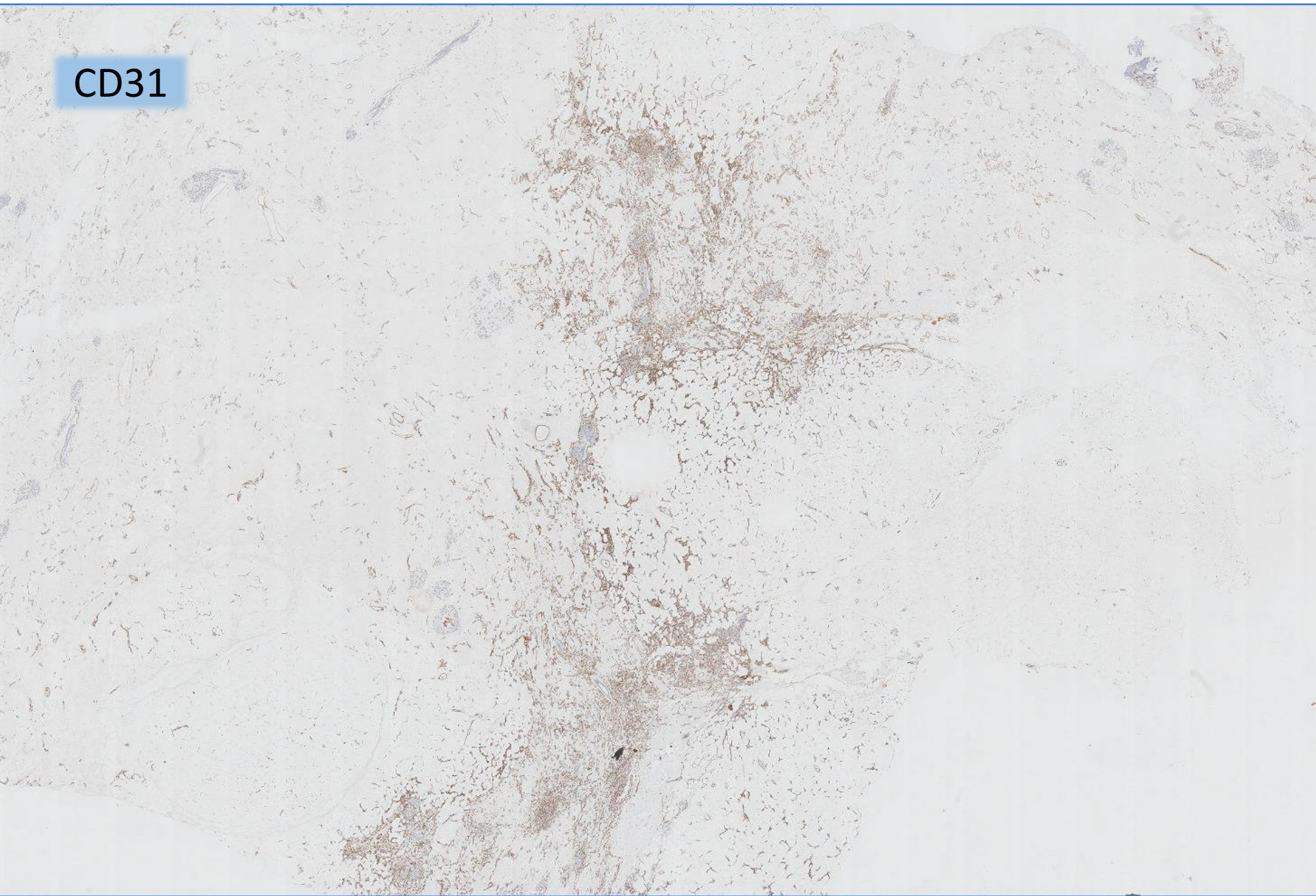


Zoom 10x

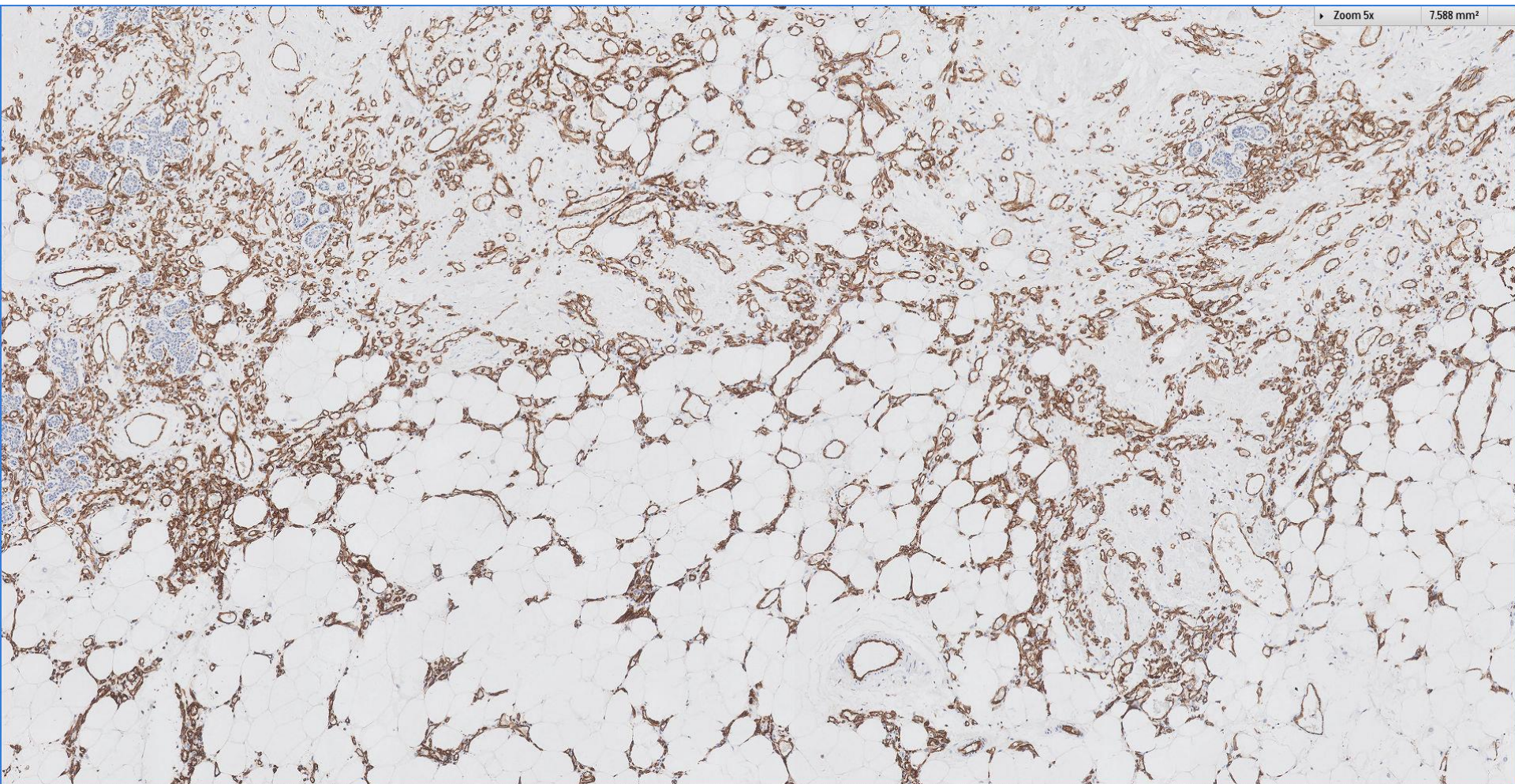
1.897 mm²



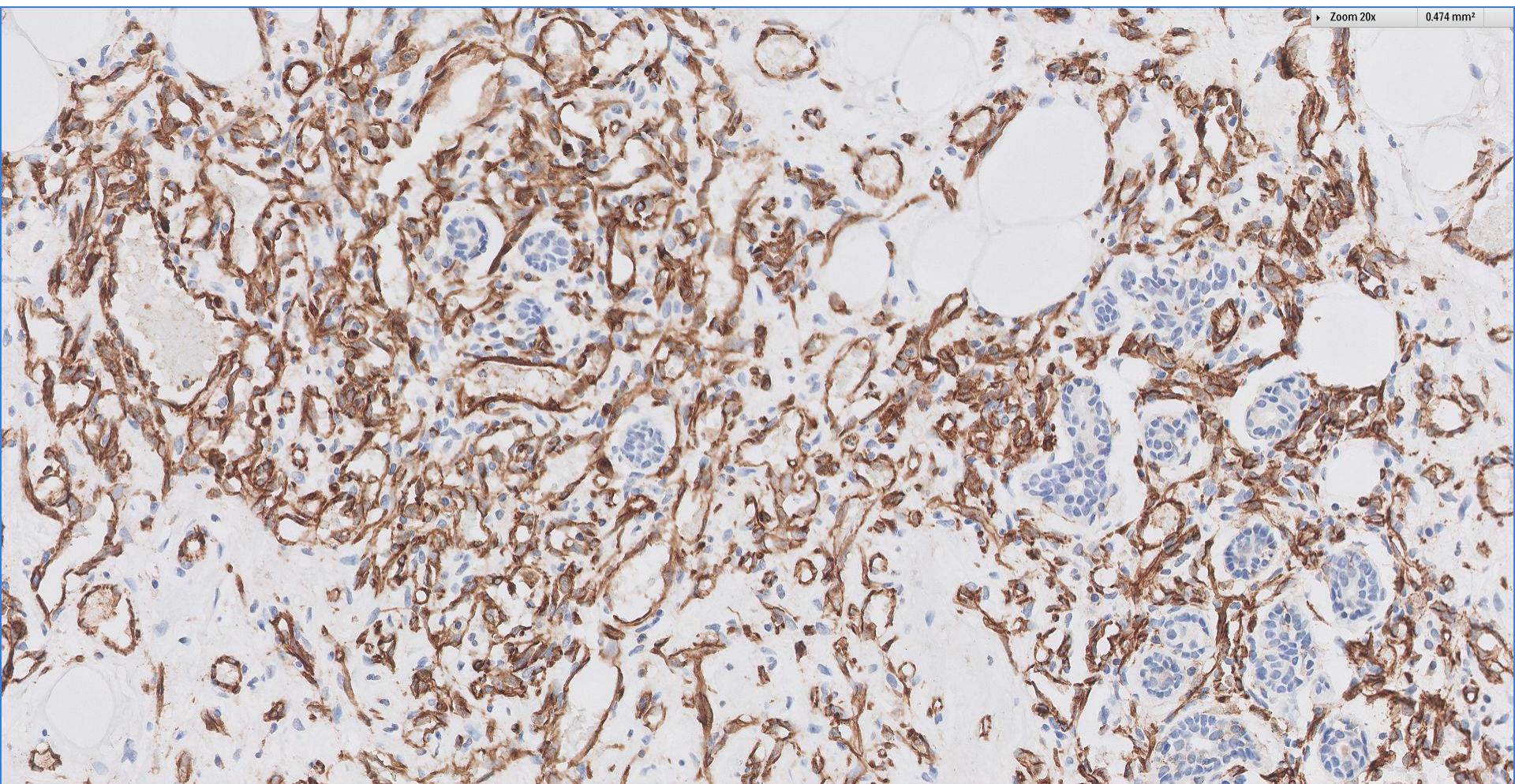
CD31



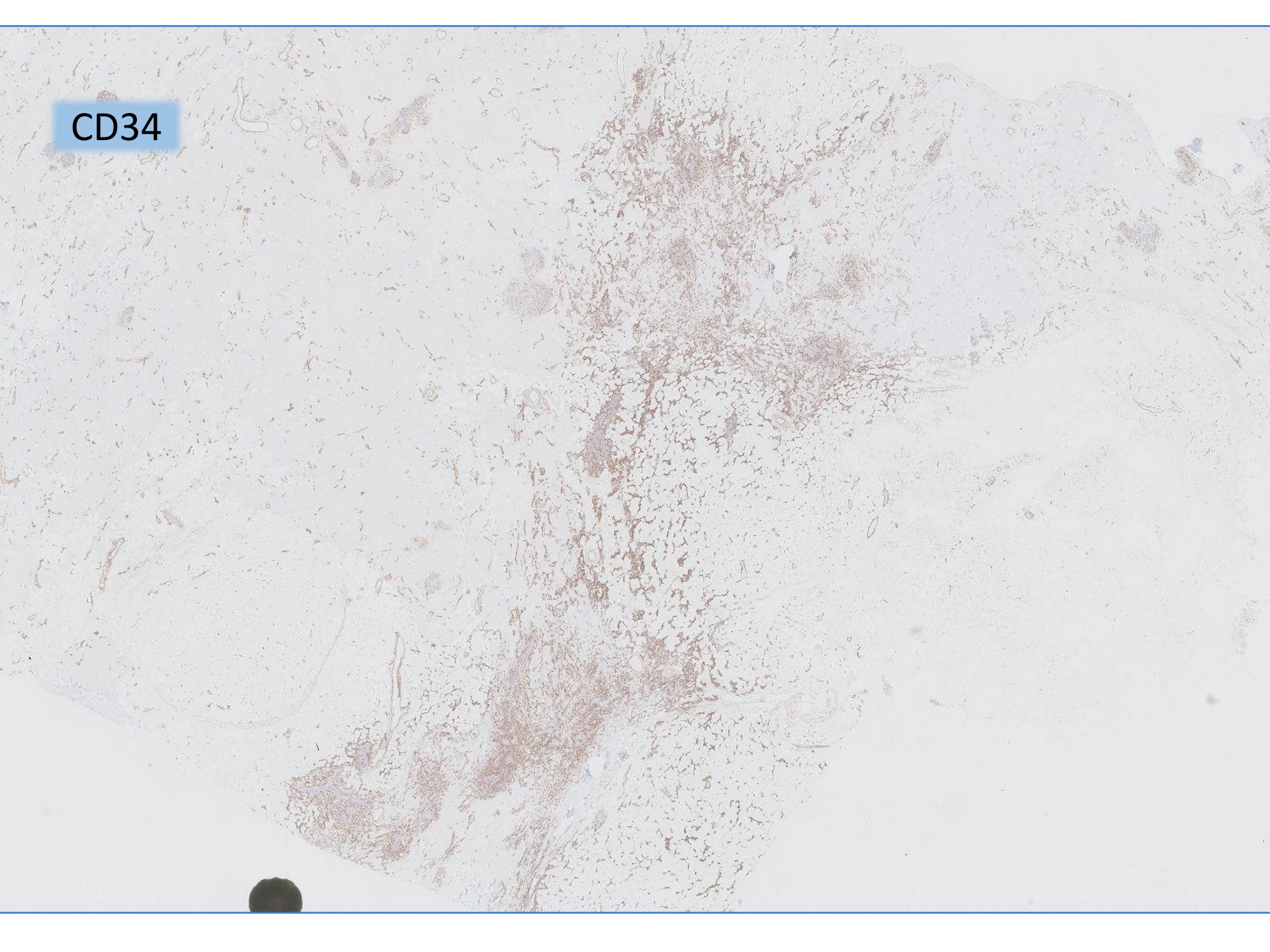
CD31



CD31



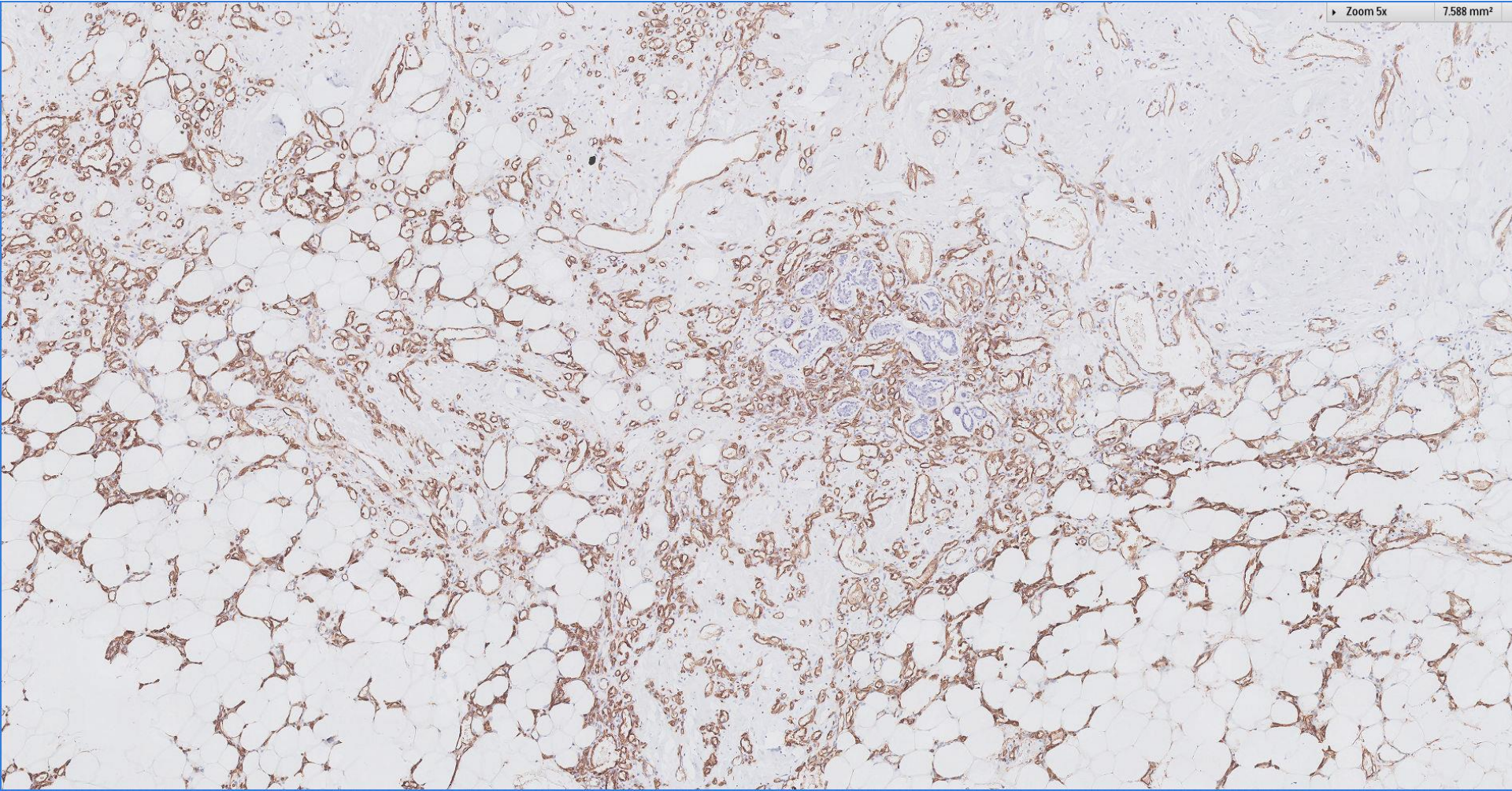
CD34



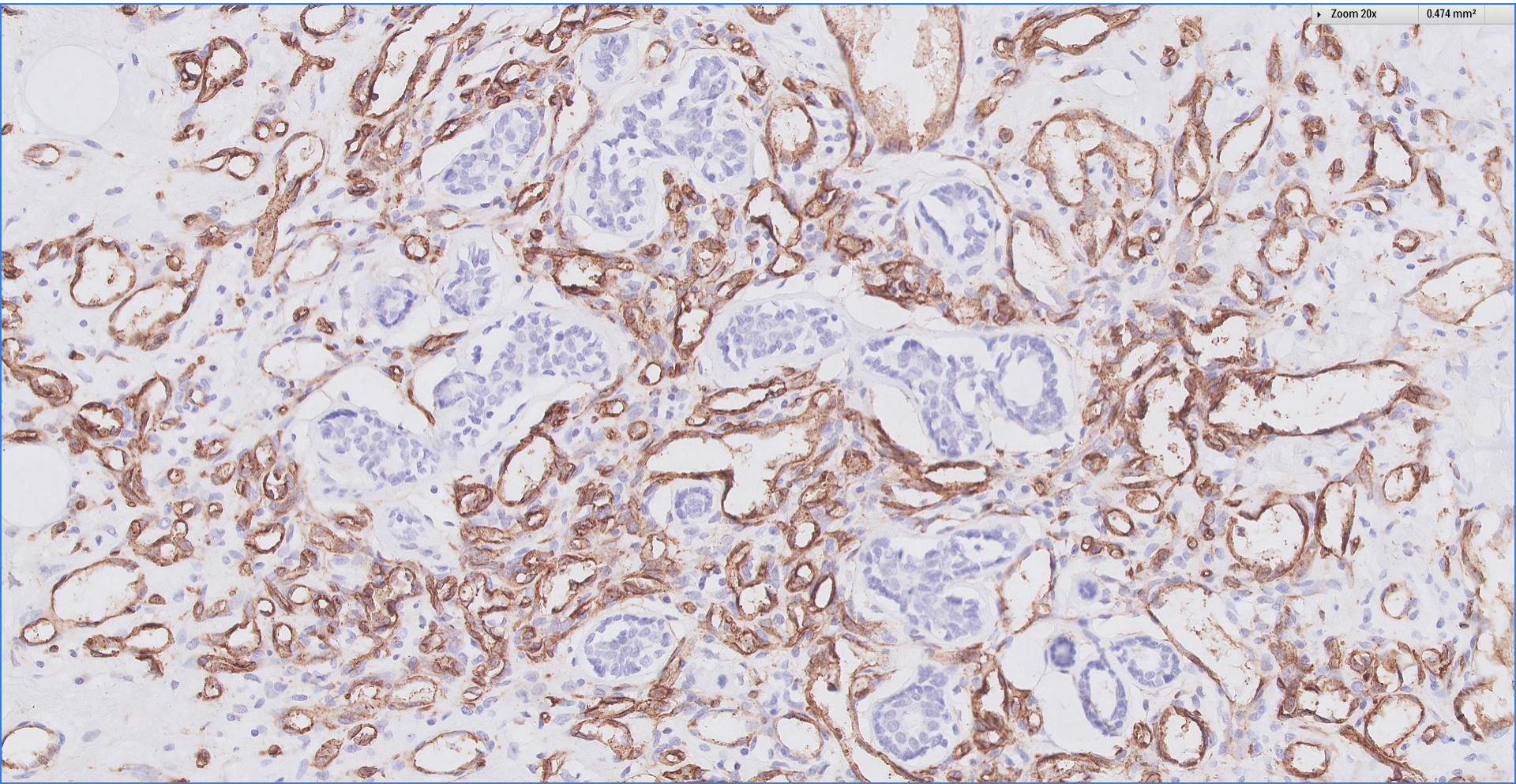
CD34

Zoom 5x

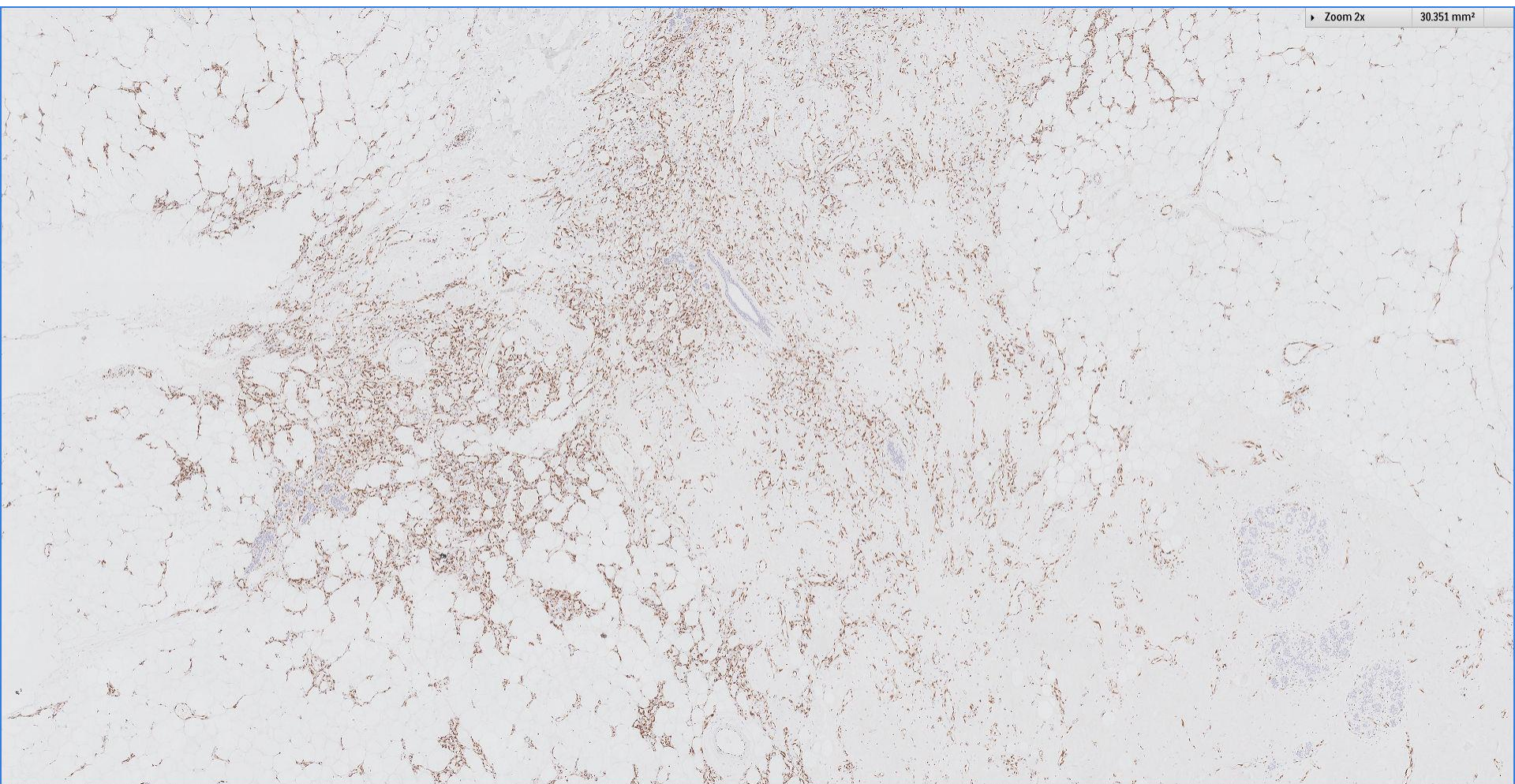
7588 mm²



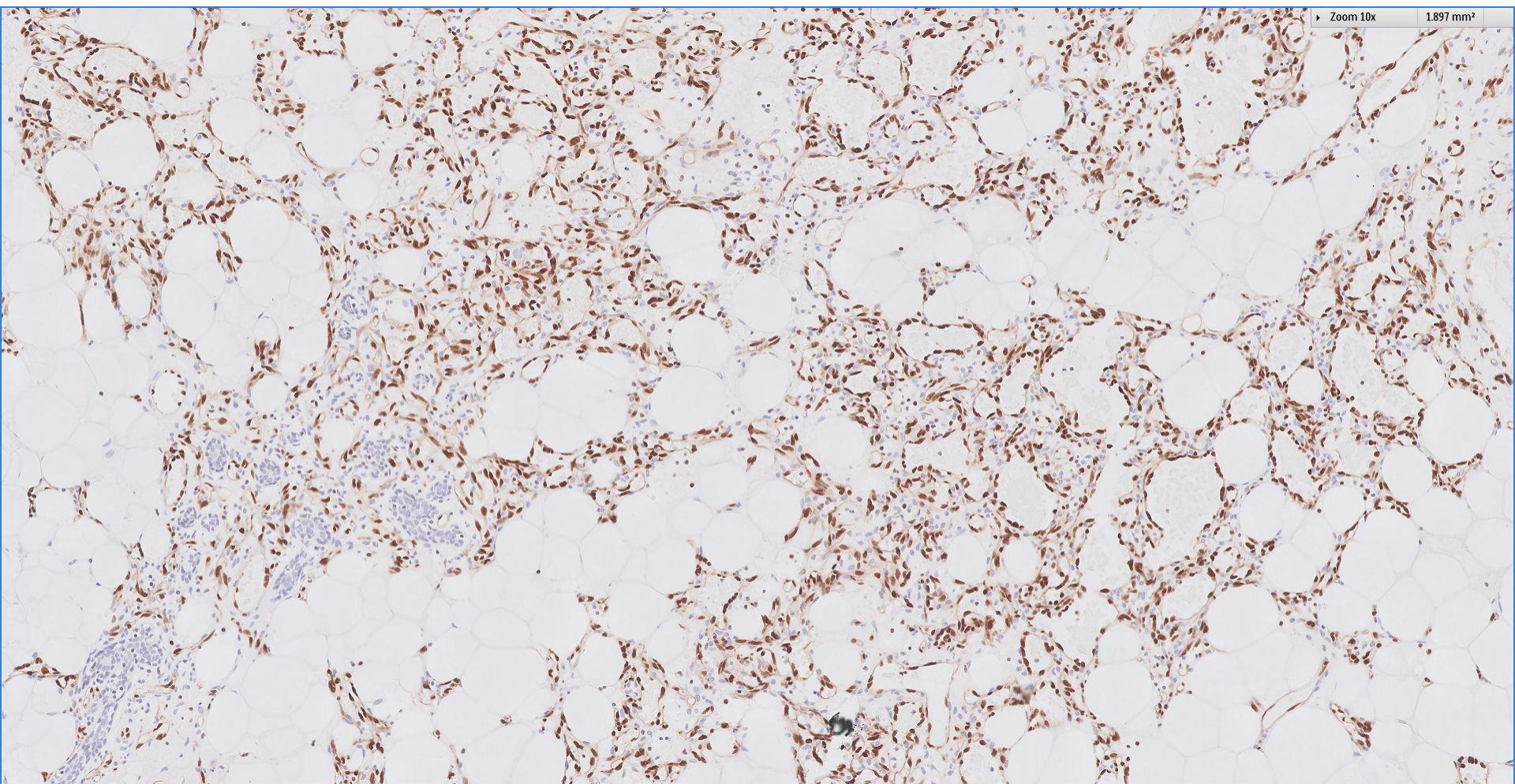
CD34



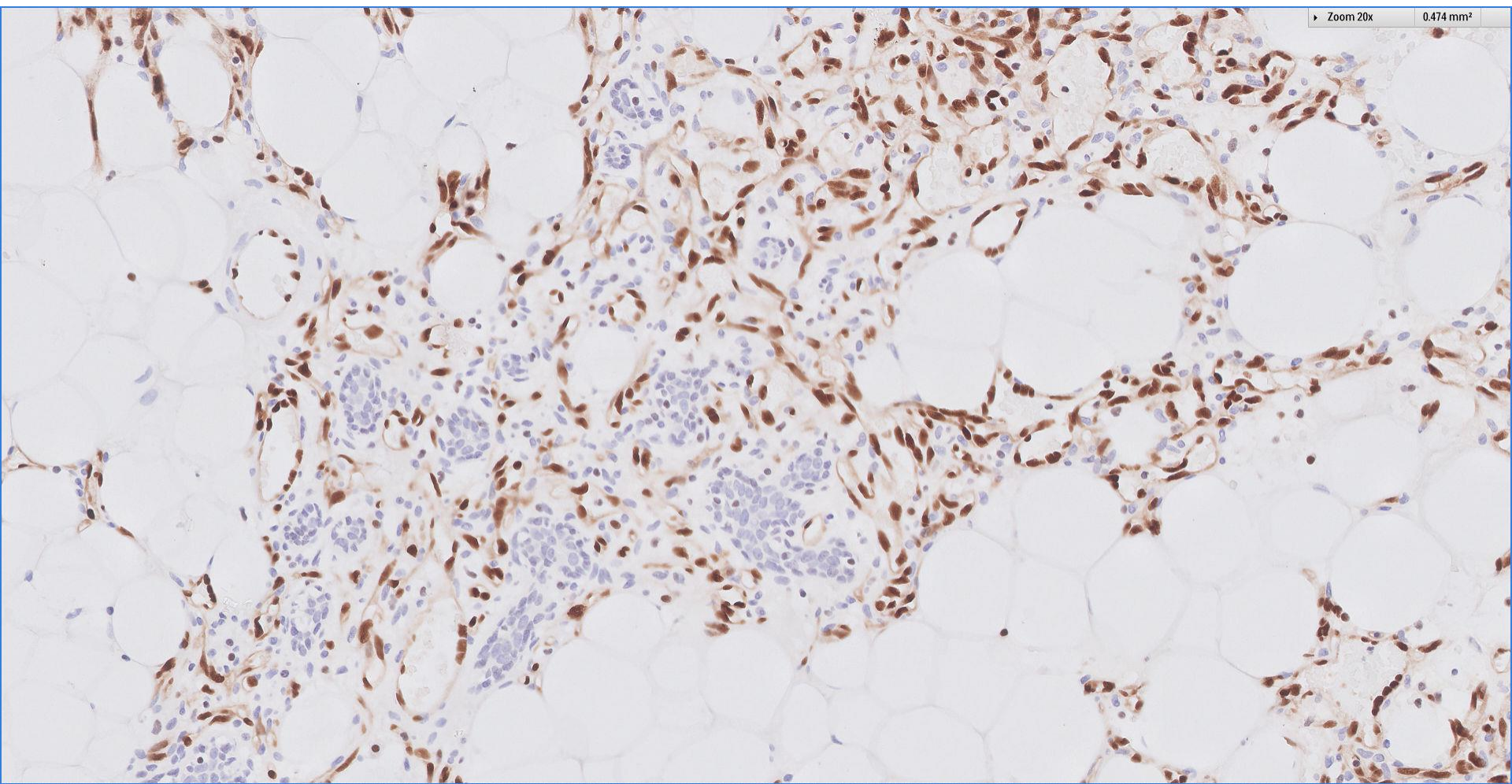
ERG



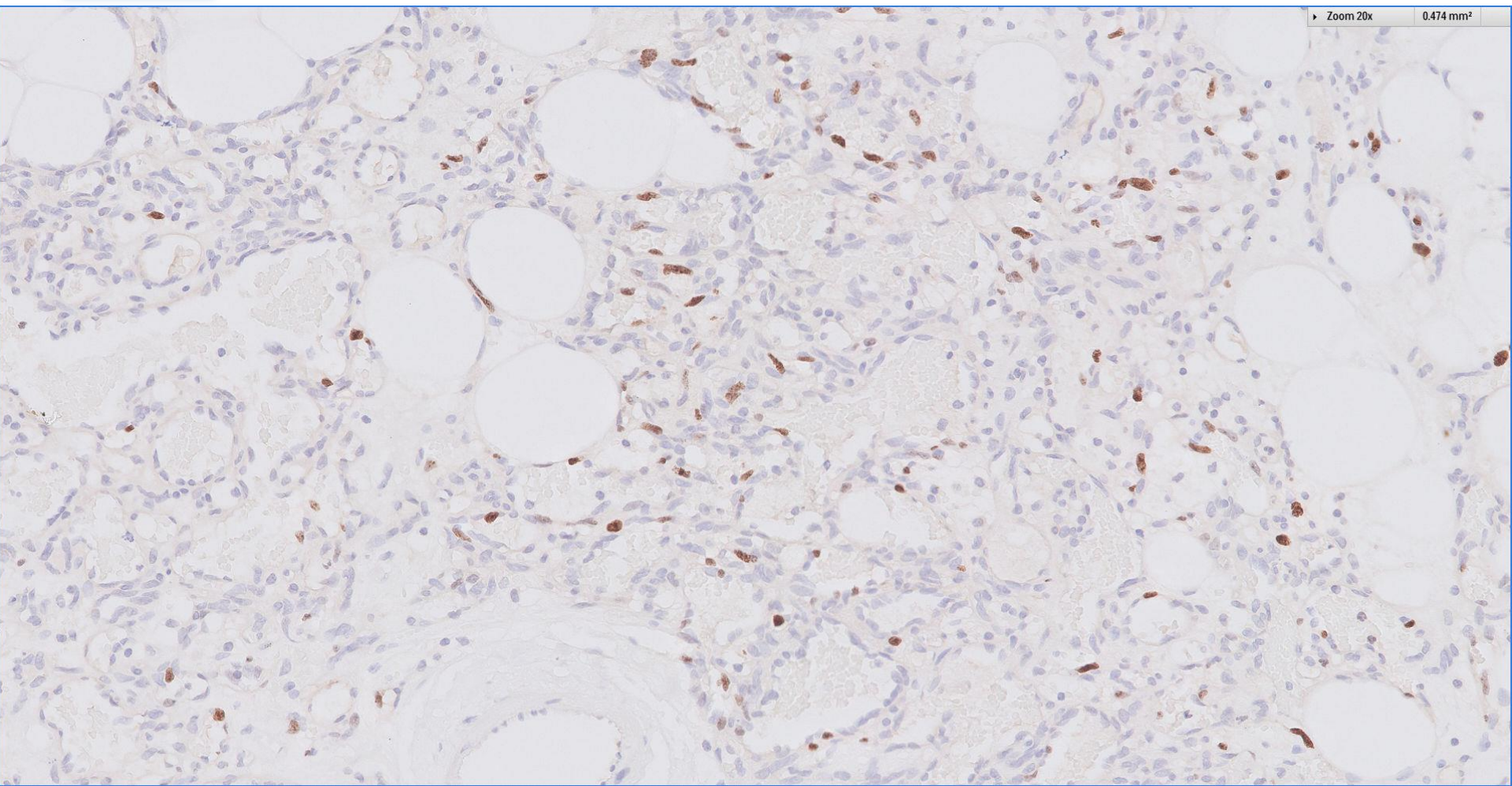
ERG



ERG



Ki67



Zoom 20x

0.474 mm²

Diagnosis

Right breast lump ~

Low grade angiosarcoma



Singapore
General Hospital

SingHealth

Division of Pathology



PATHOLOGY



Angiosarcoma

- Permeative anastomosing nature of the vessels
- Invasion into breast lobules
- Mild endothelial atypia
- Immunohistochemistry with endothelial markers accentuate the permeative pattern



Singapore
General Hospital

SingHealth

Division of Pathology



SingHealth DukeNUS
ACADEMIC MEDICAL CENTRE

PATHOLOGY

IAP

International Academy of Pathology
Singapore Division



Angiosarcoma ~ differential diagnoses

- Haemangioma
- Angiolipoma
- Pseudoangiomatous stromal hyperplasia
- Lymphangioma
- Atypical vascular lesion
- Angiomatosis
- Kaposi sarcoma
- Metaplastic carcinoma with pseudoangiomatoid features



Singapore
General Hospital

SingHealth

Division of Pathology



SingHealth DukeNUS
ACADEMIC MEDICAL CENTRE

PATHOLOGY



IAP

International Academy of Pathology
Singapore Division

 Breast
Pathology
Course 2017

