

## Case 31

57 year old Indian woman.

Ultrasound guided core biopsy of a left breast nodule at  
9:30 o'clock.



Singapore  
General Hospital

SingHealth

Division of Pathology



**PATHOLOGY**

**IAP**

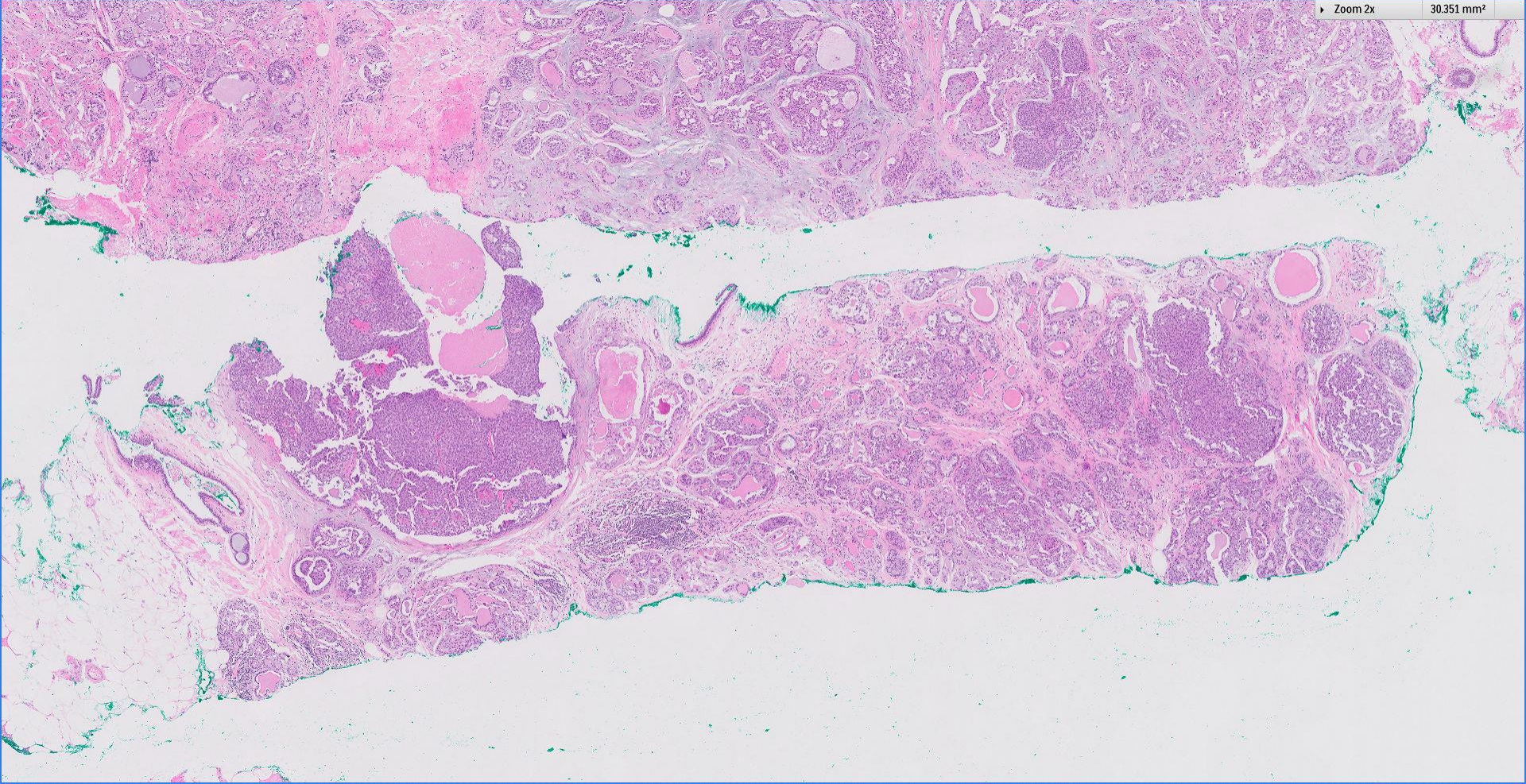
International Academy of Pathology  
Singapore Division

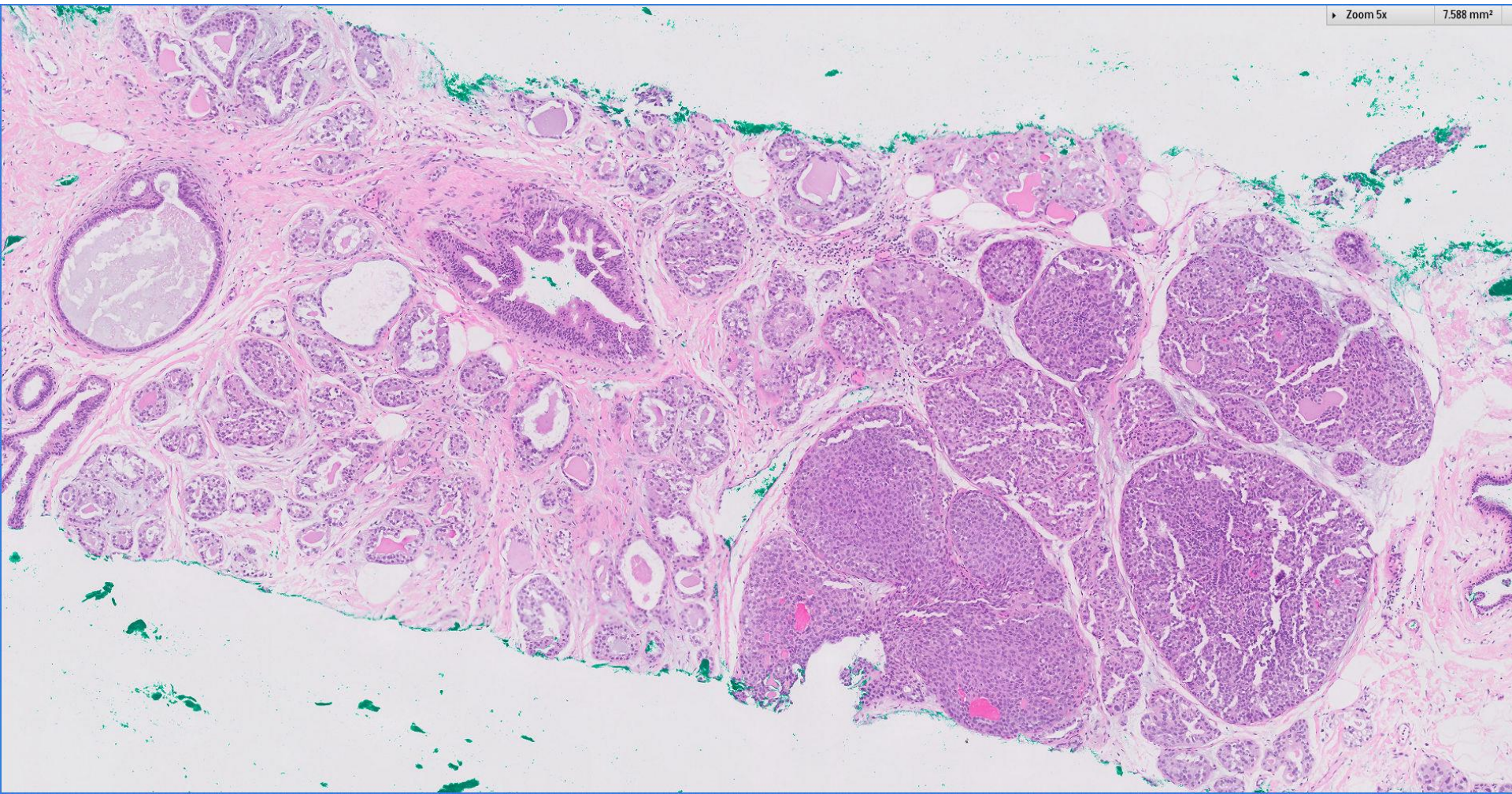


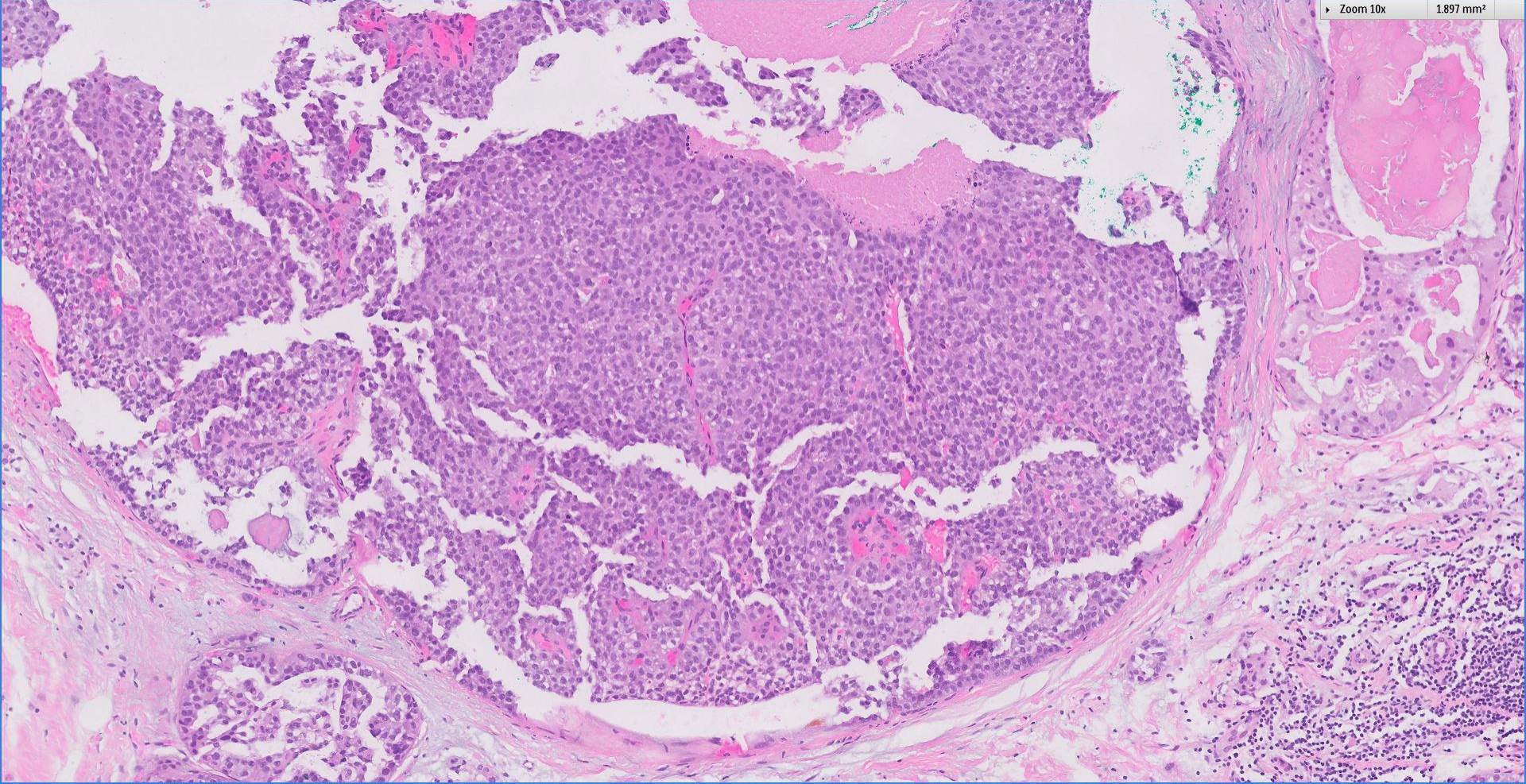


Zoom 2x

30.351 mm<sup>2</sup>

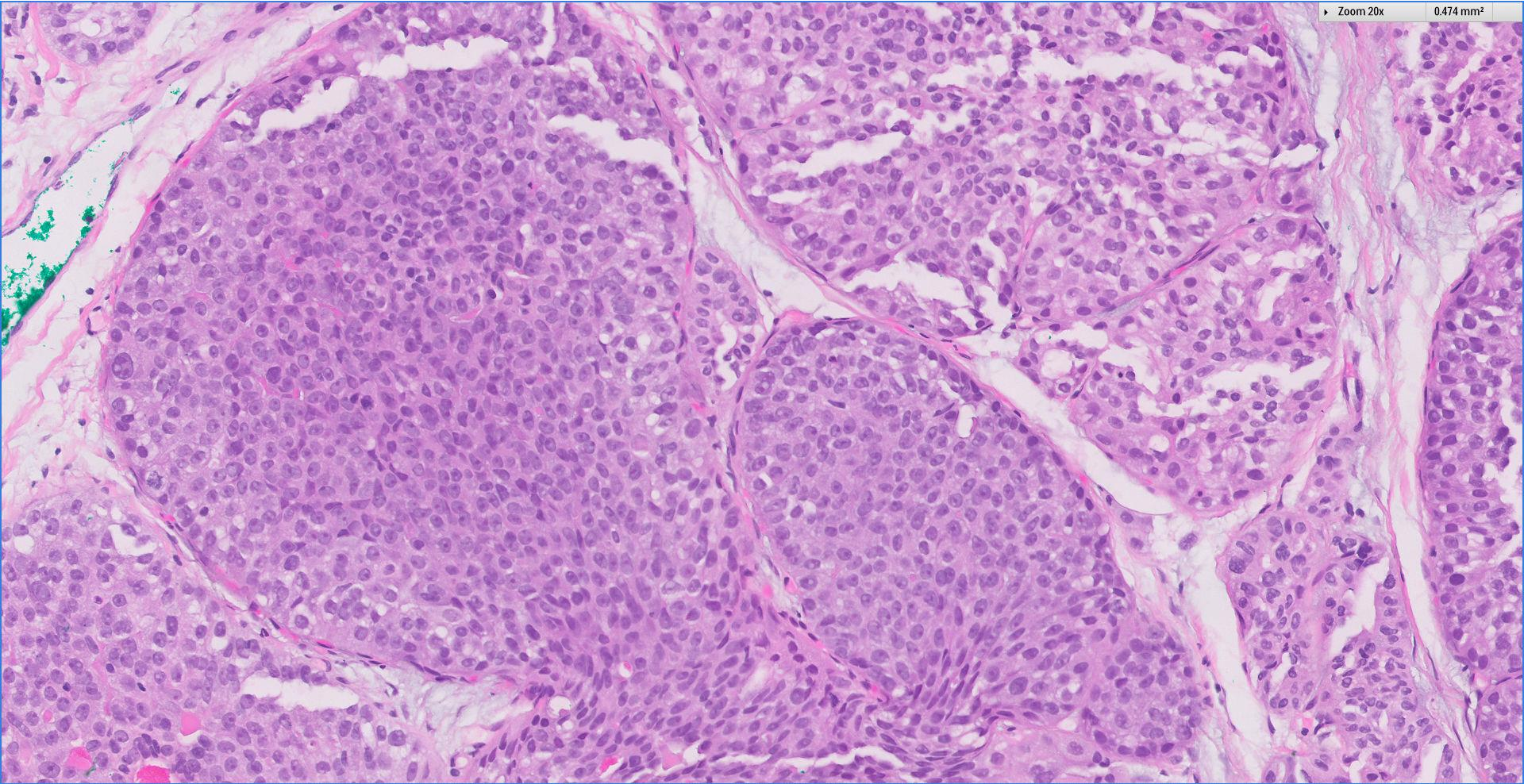






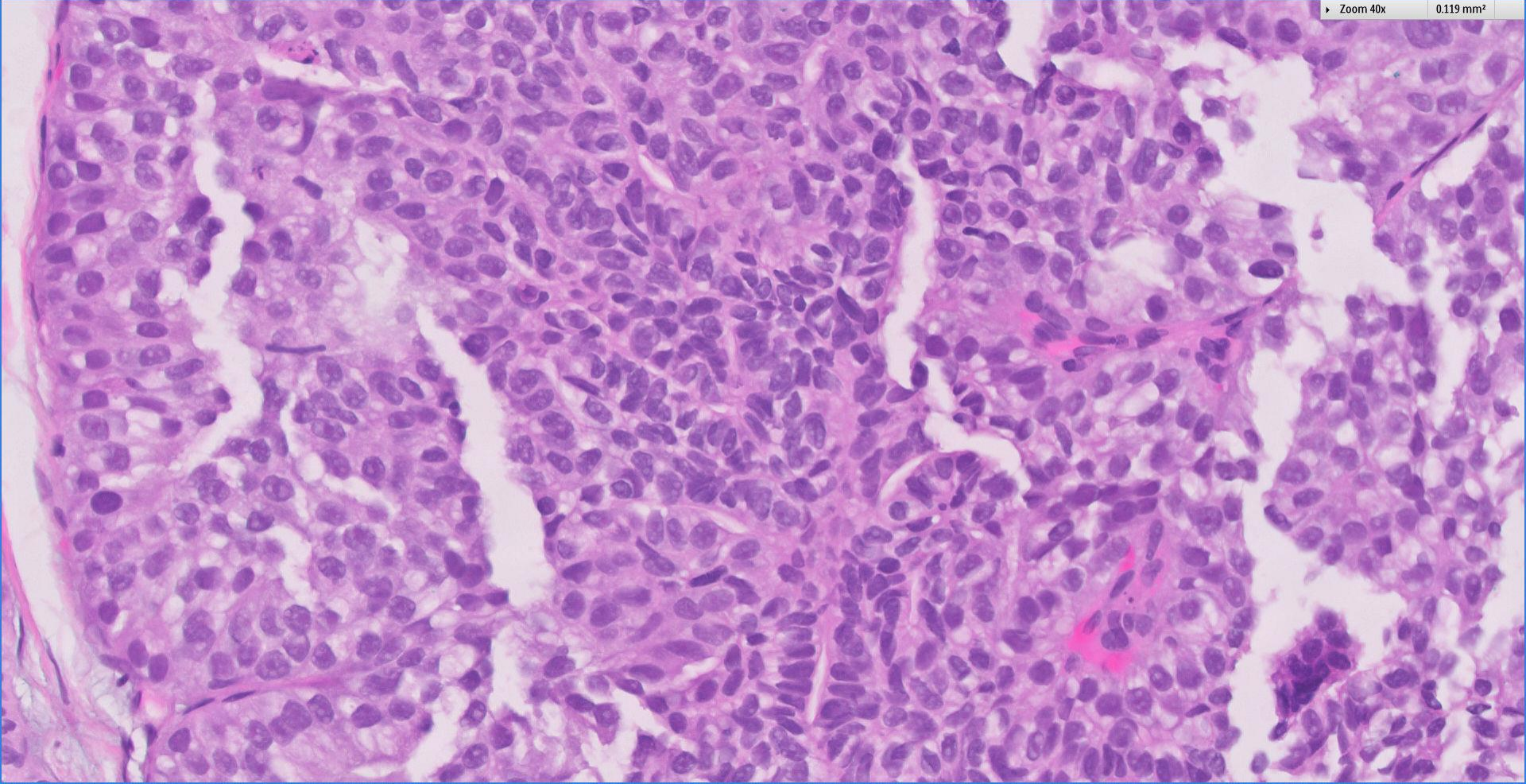
Zoom 20x

0.474 mm<sup>2</sup>



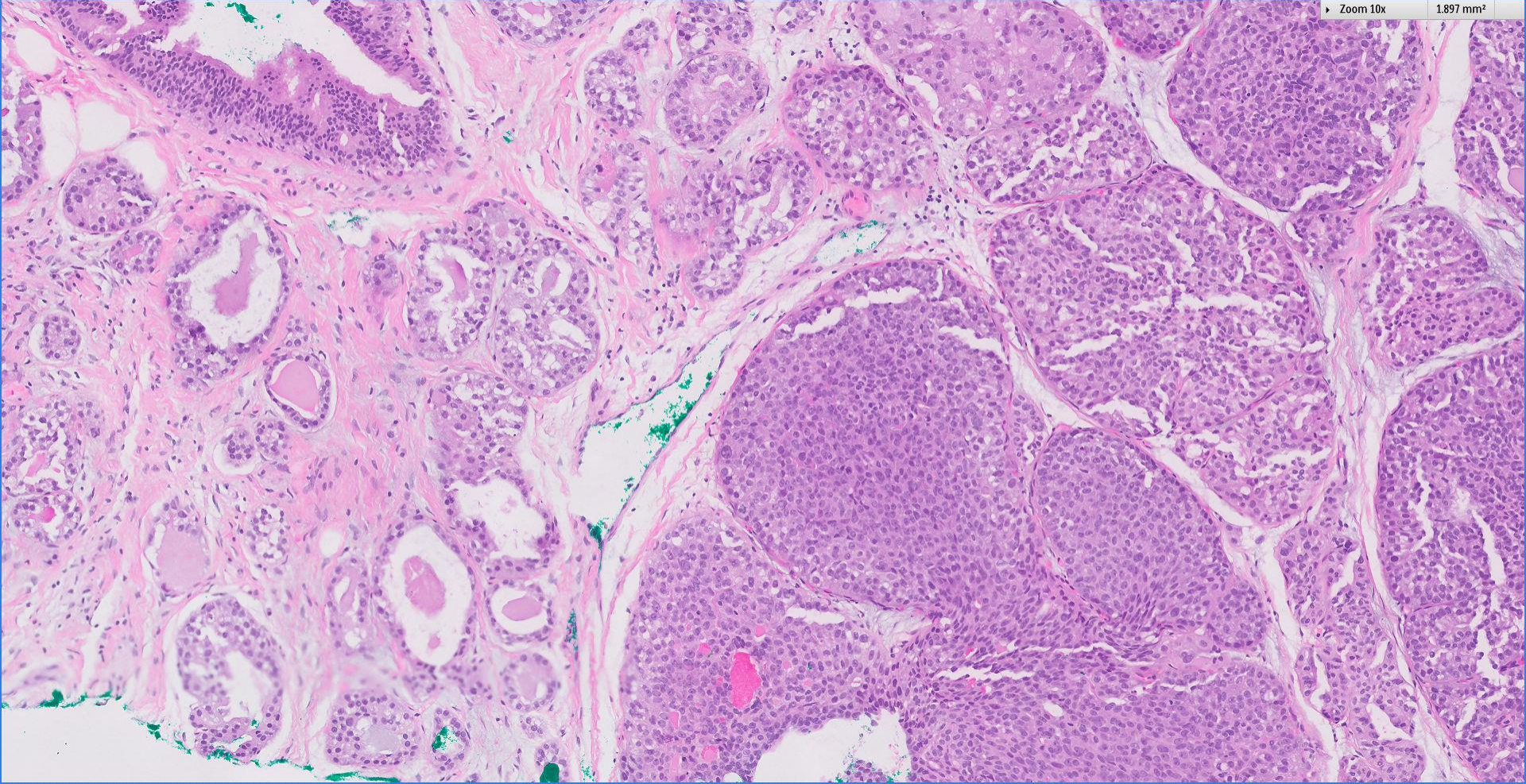
Zoom 40x

0.119 mm<sup>2</sup>



Zoom 10x

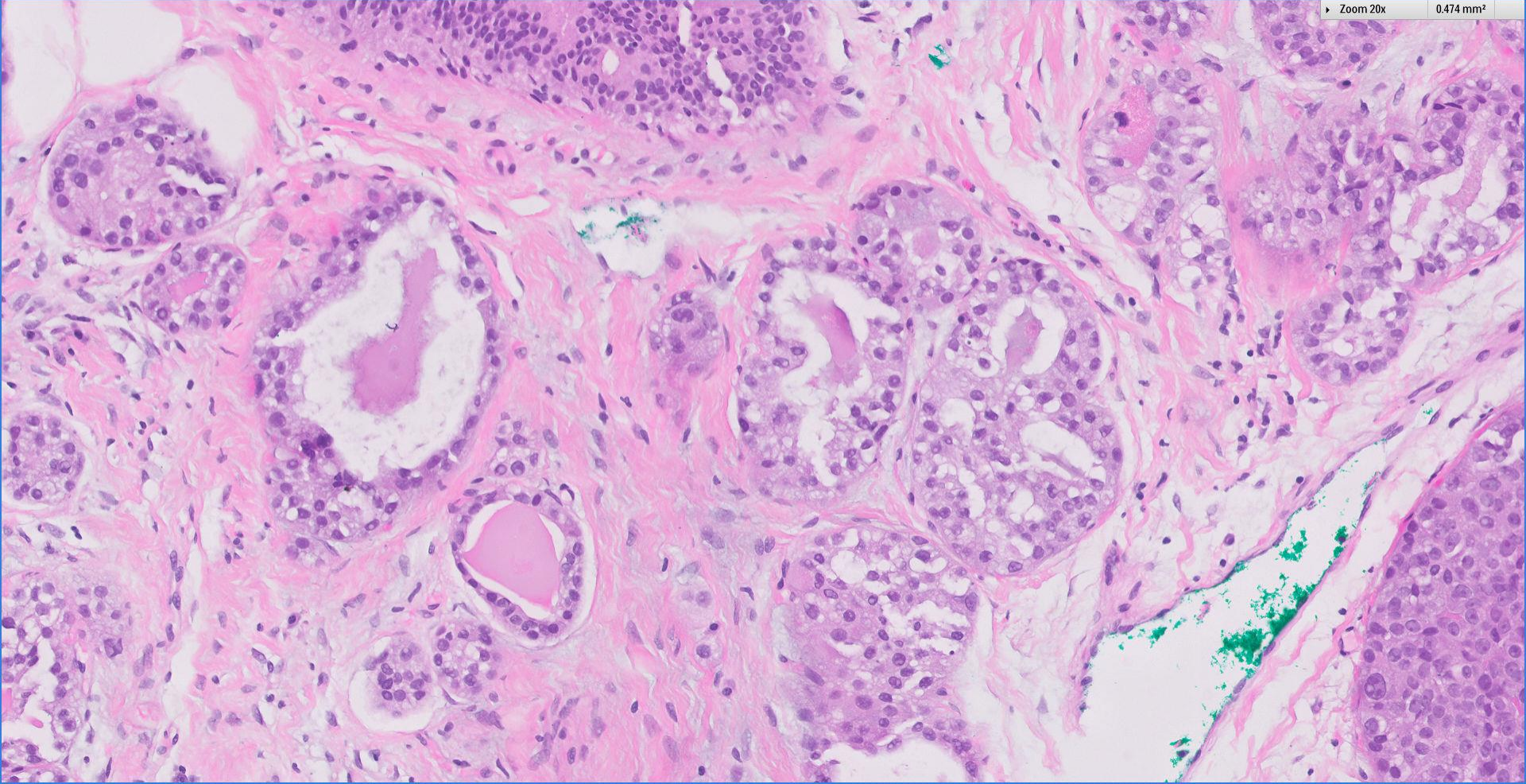
1.897 mm<sup>2</sup>





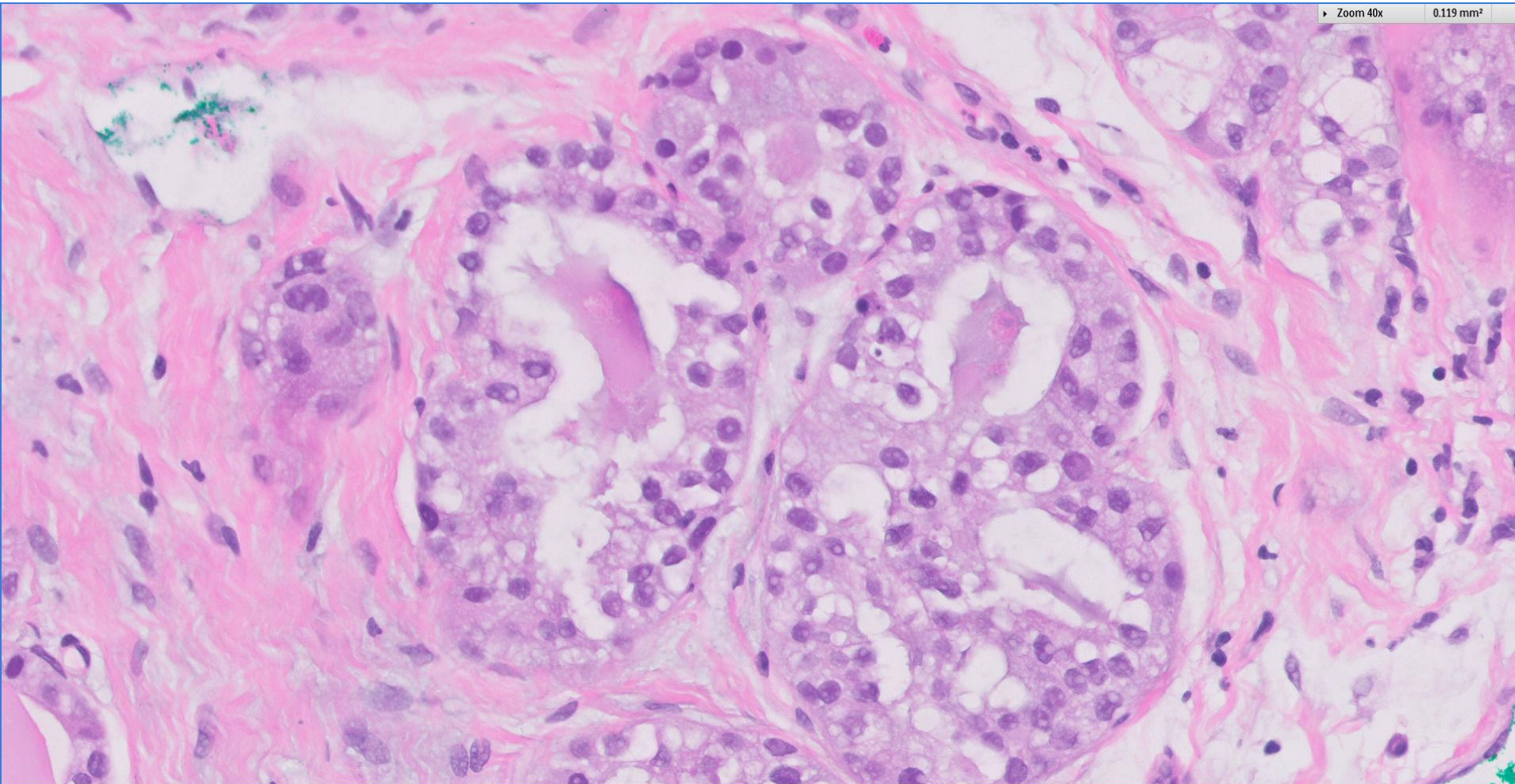
Zoom 20x

0.474 mm<sup>2</sup>



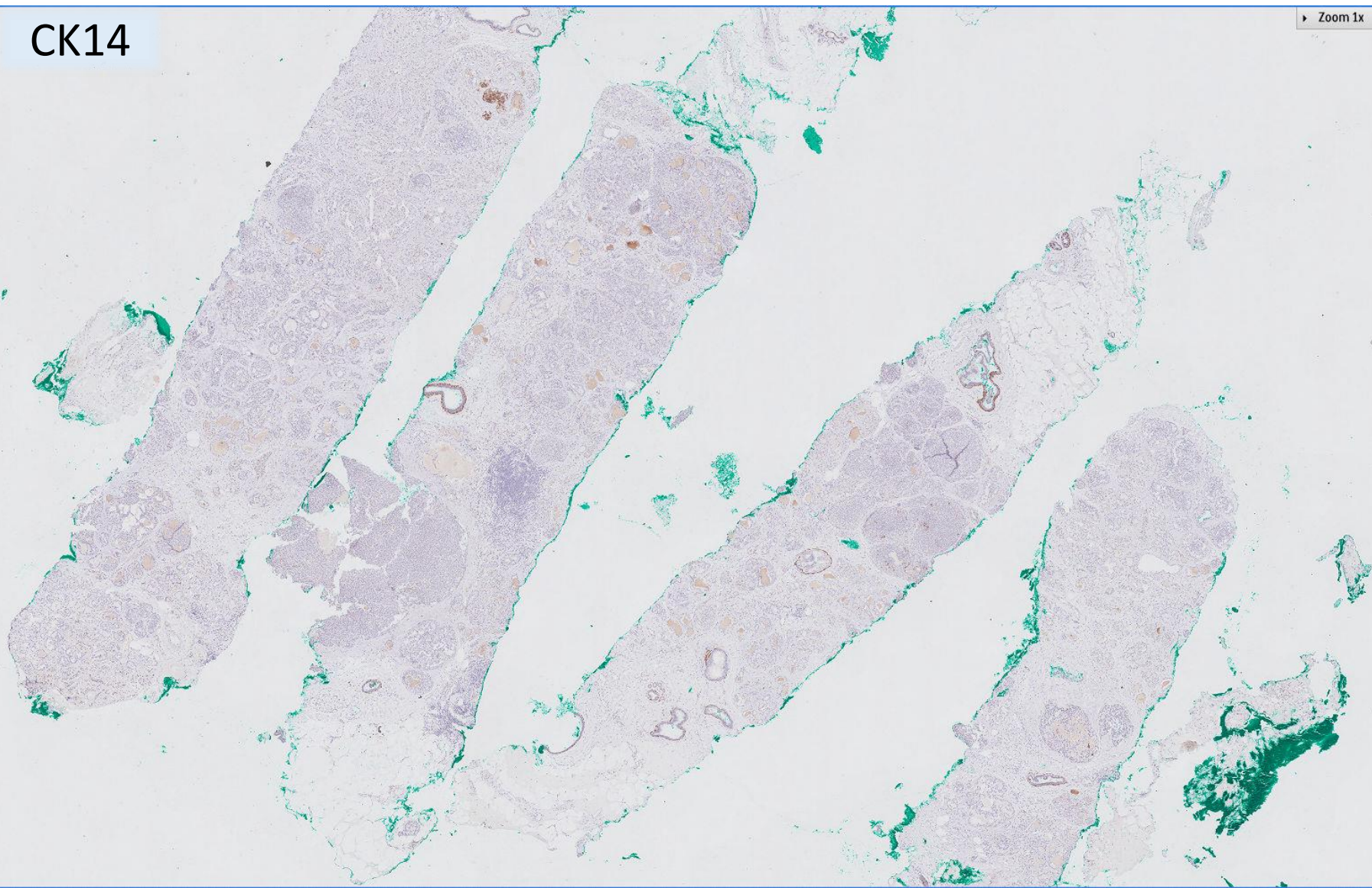
Zoom 40x

0.119 mm<sup>2</sup>

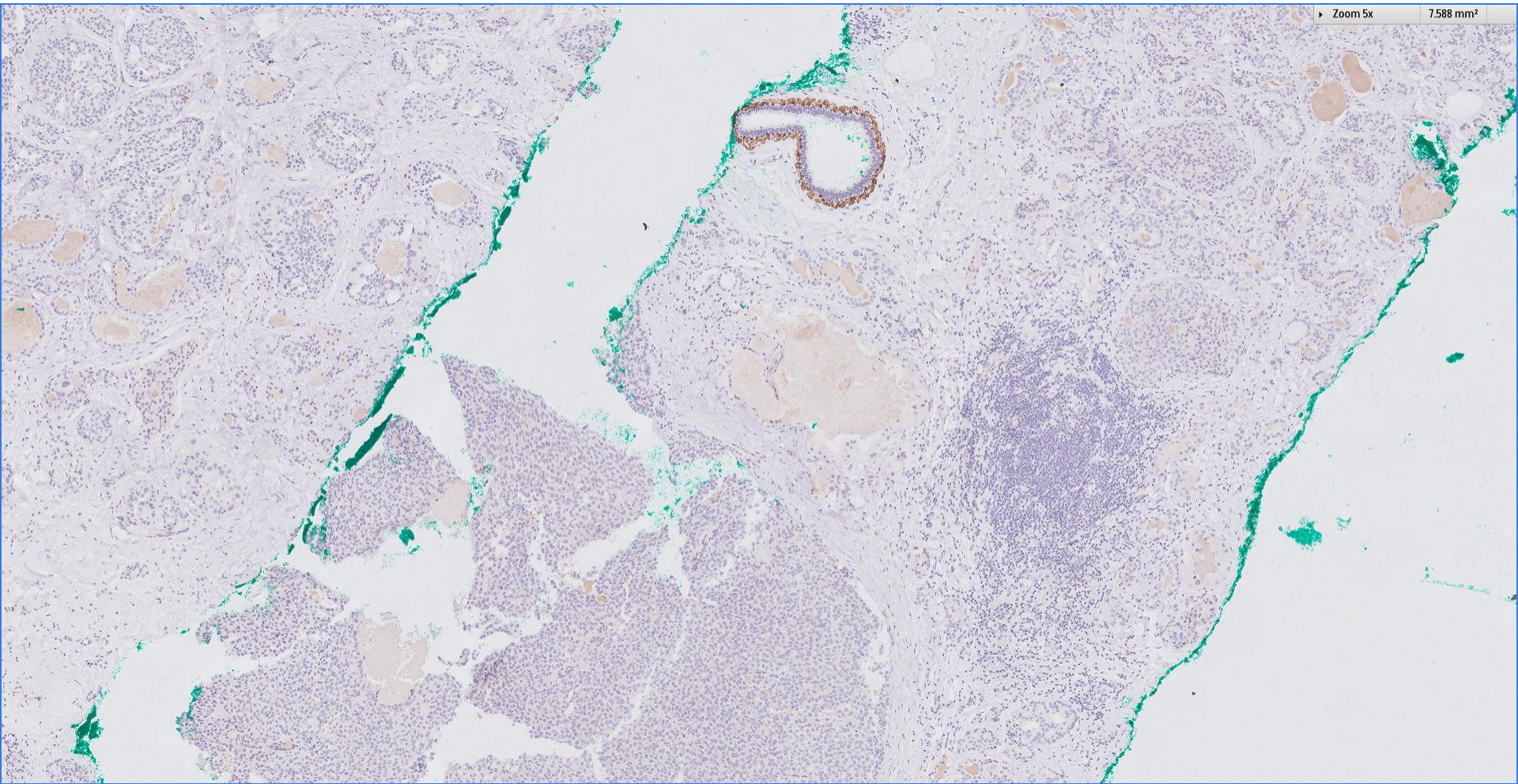


CK14

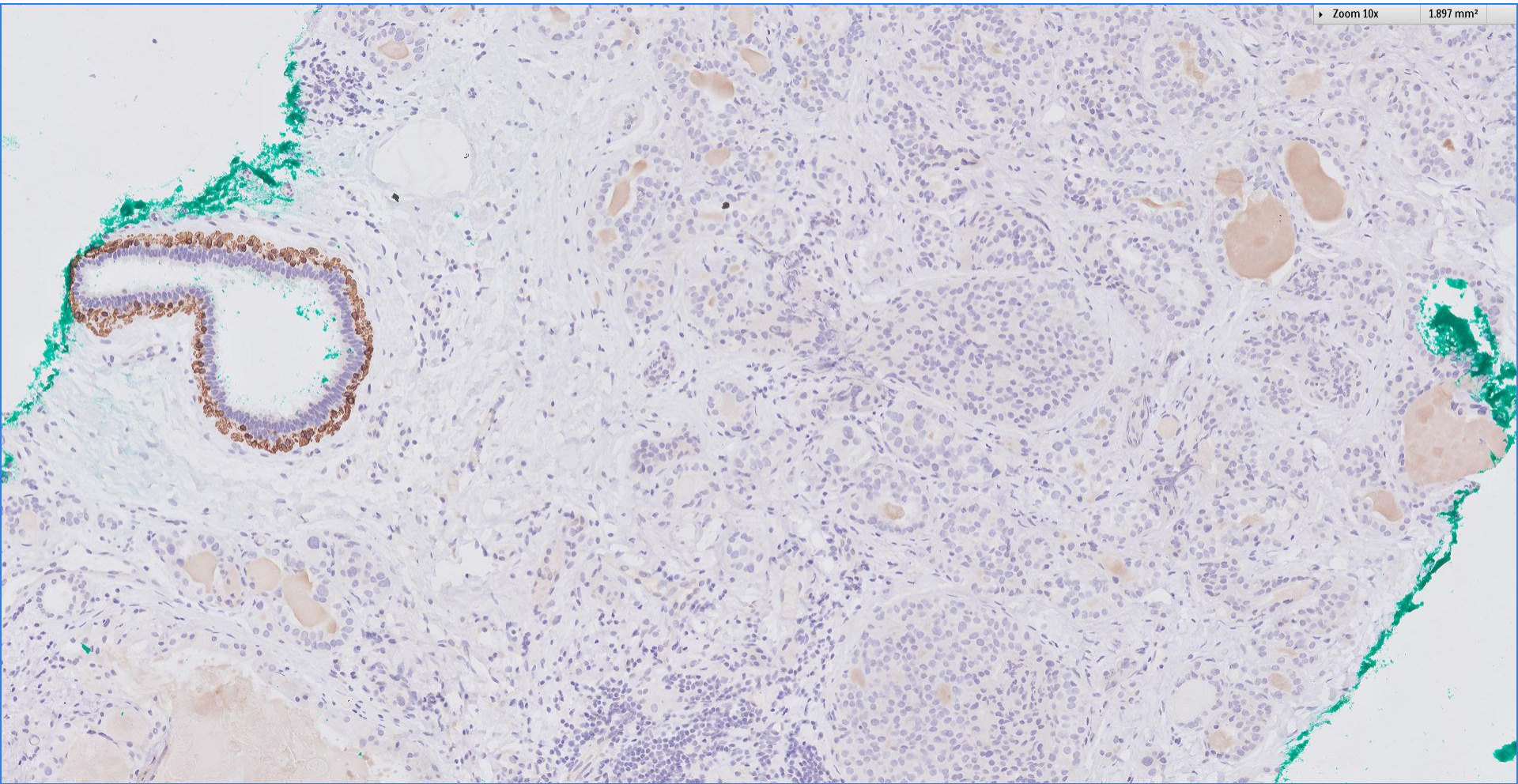
► Zoom 1x



CK14

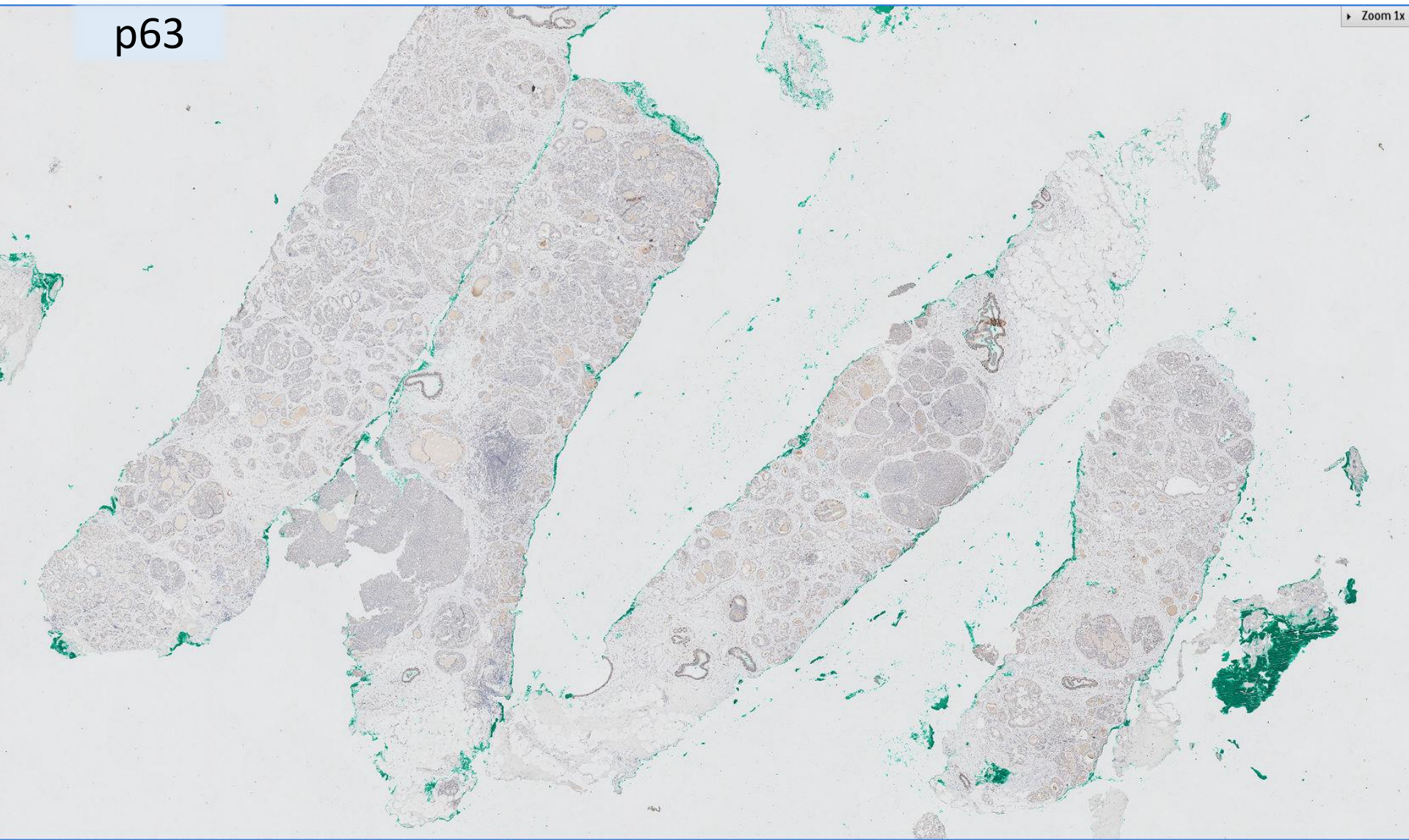


CK14

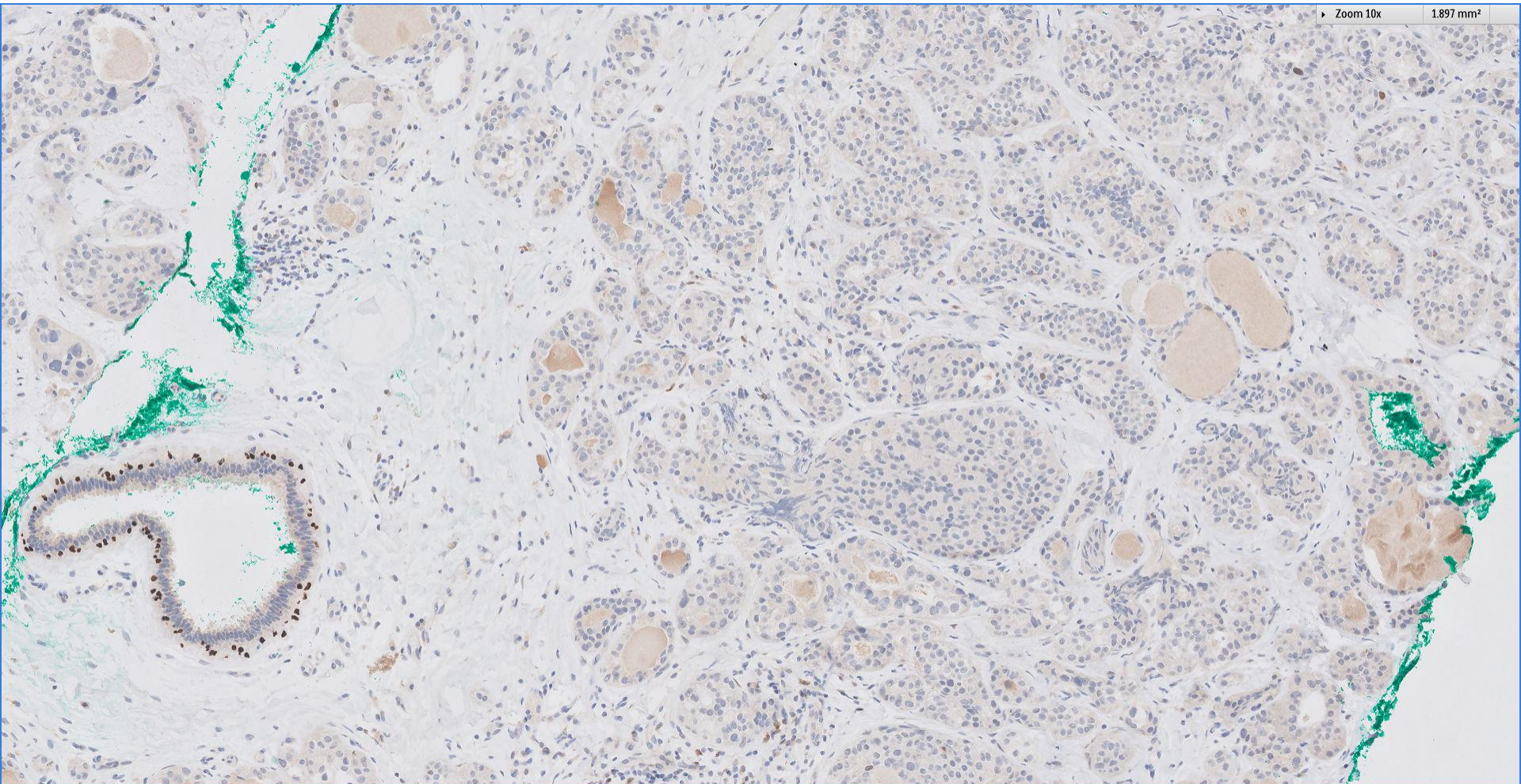


p63

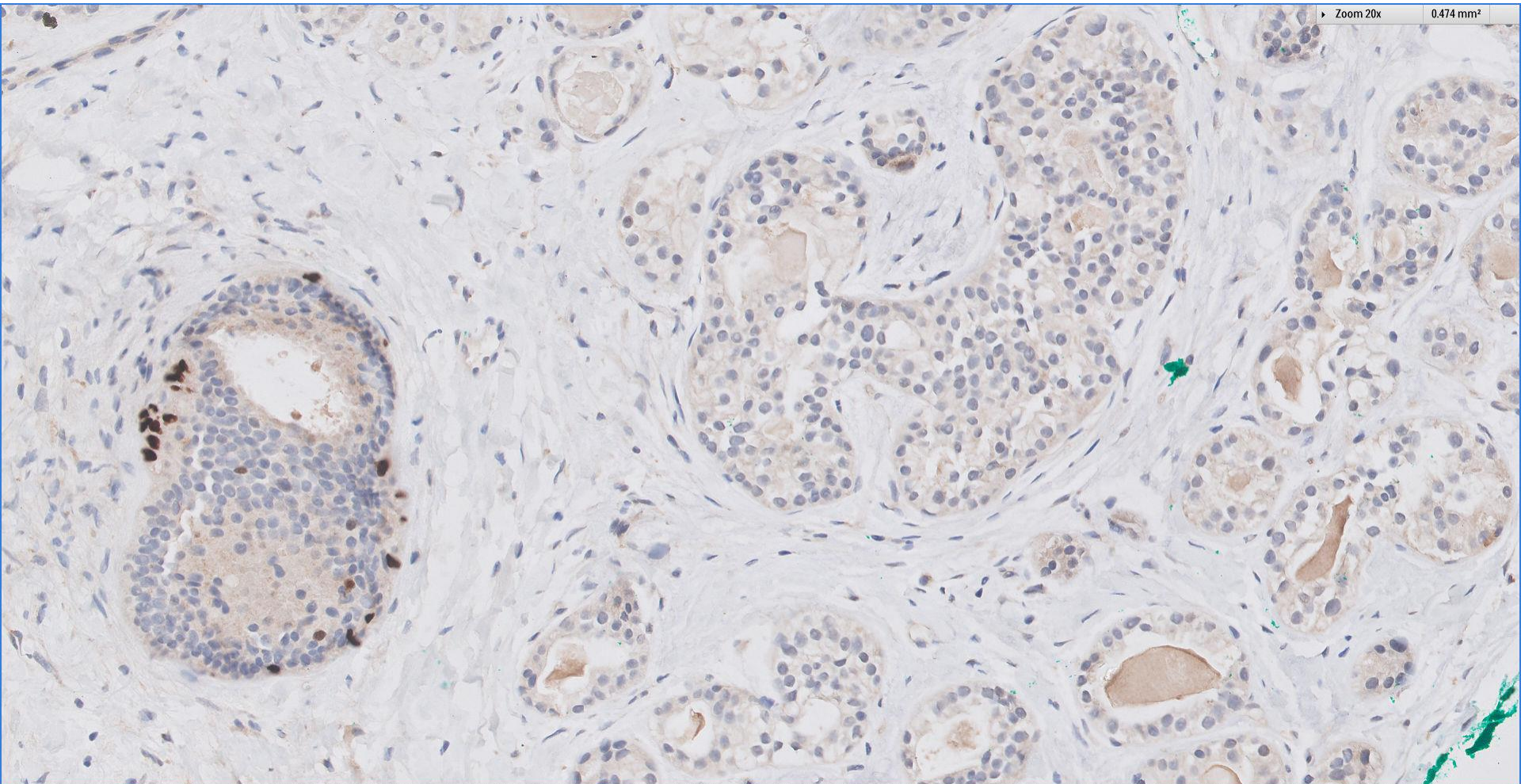
Zoom 1x



p63

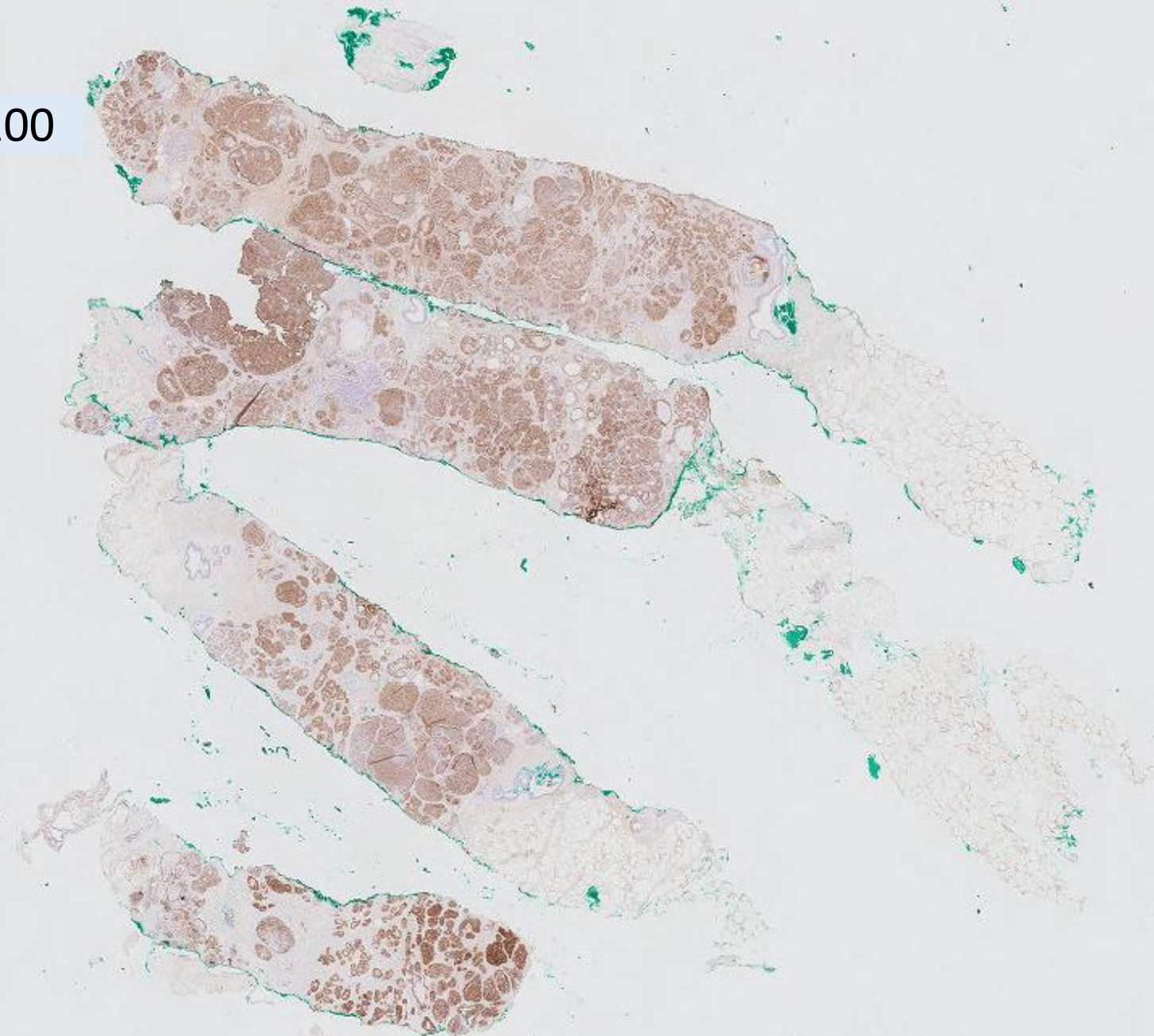


p63



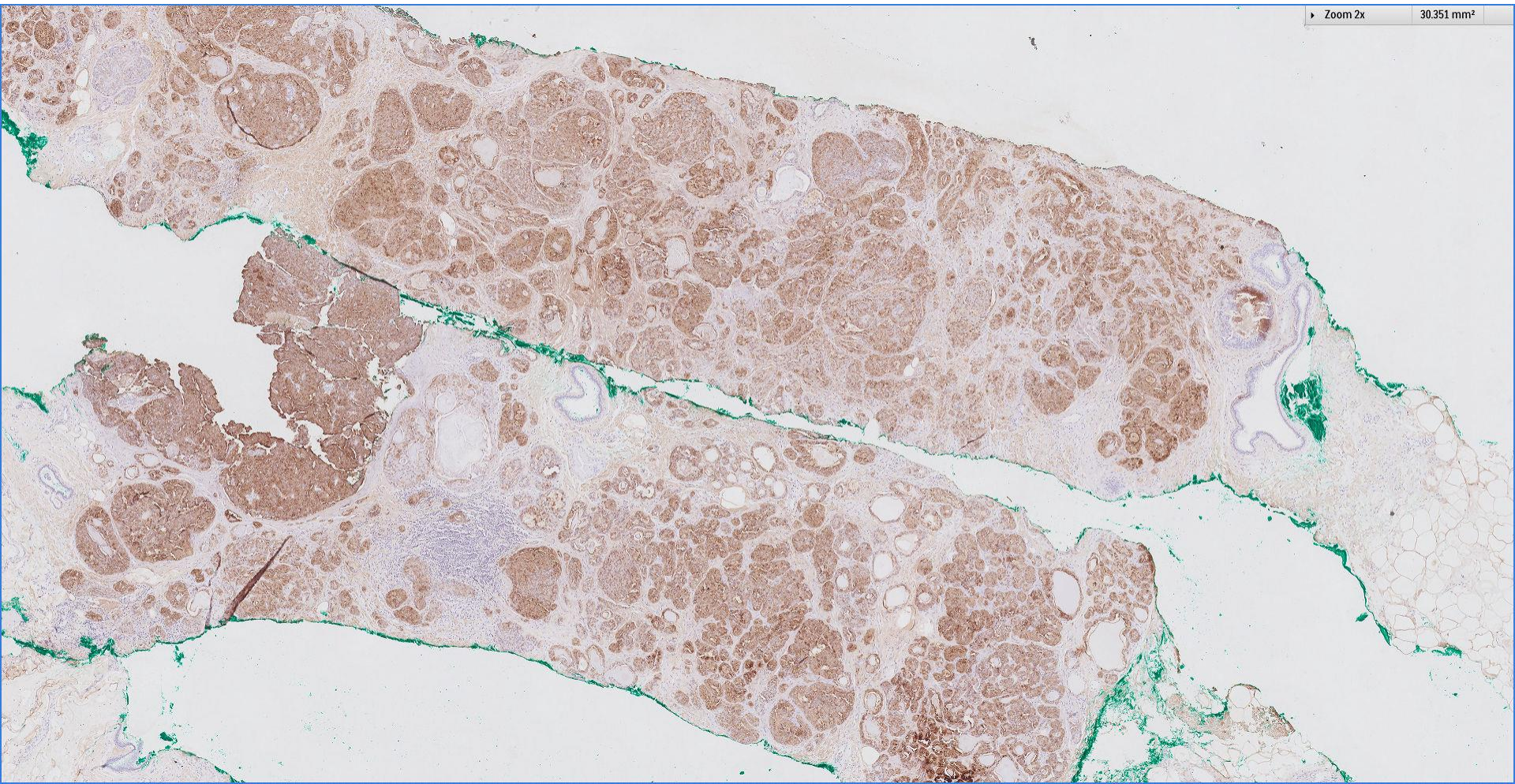


S100

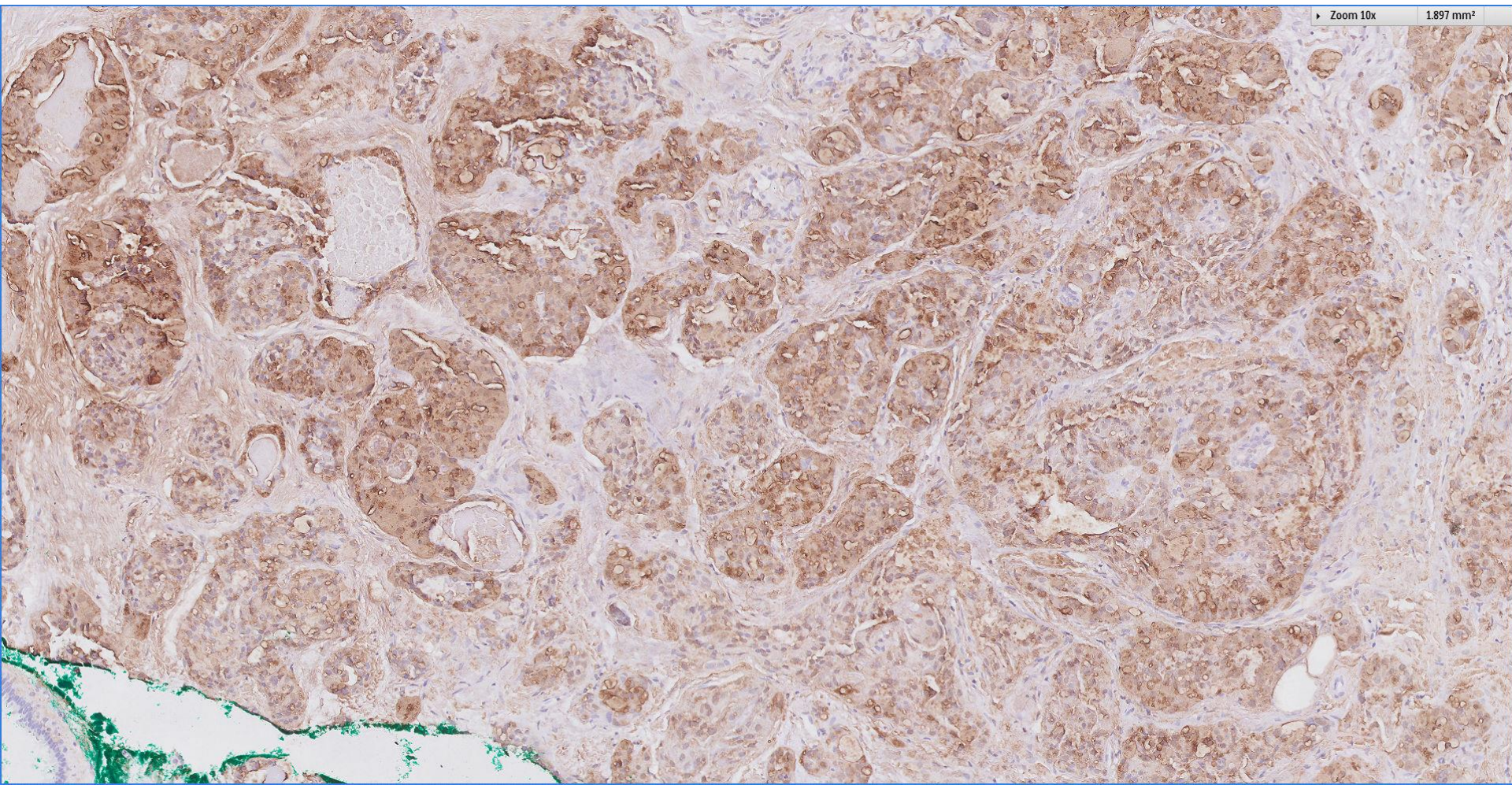


S100

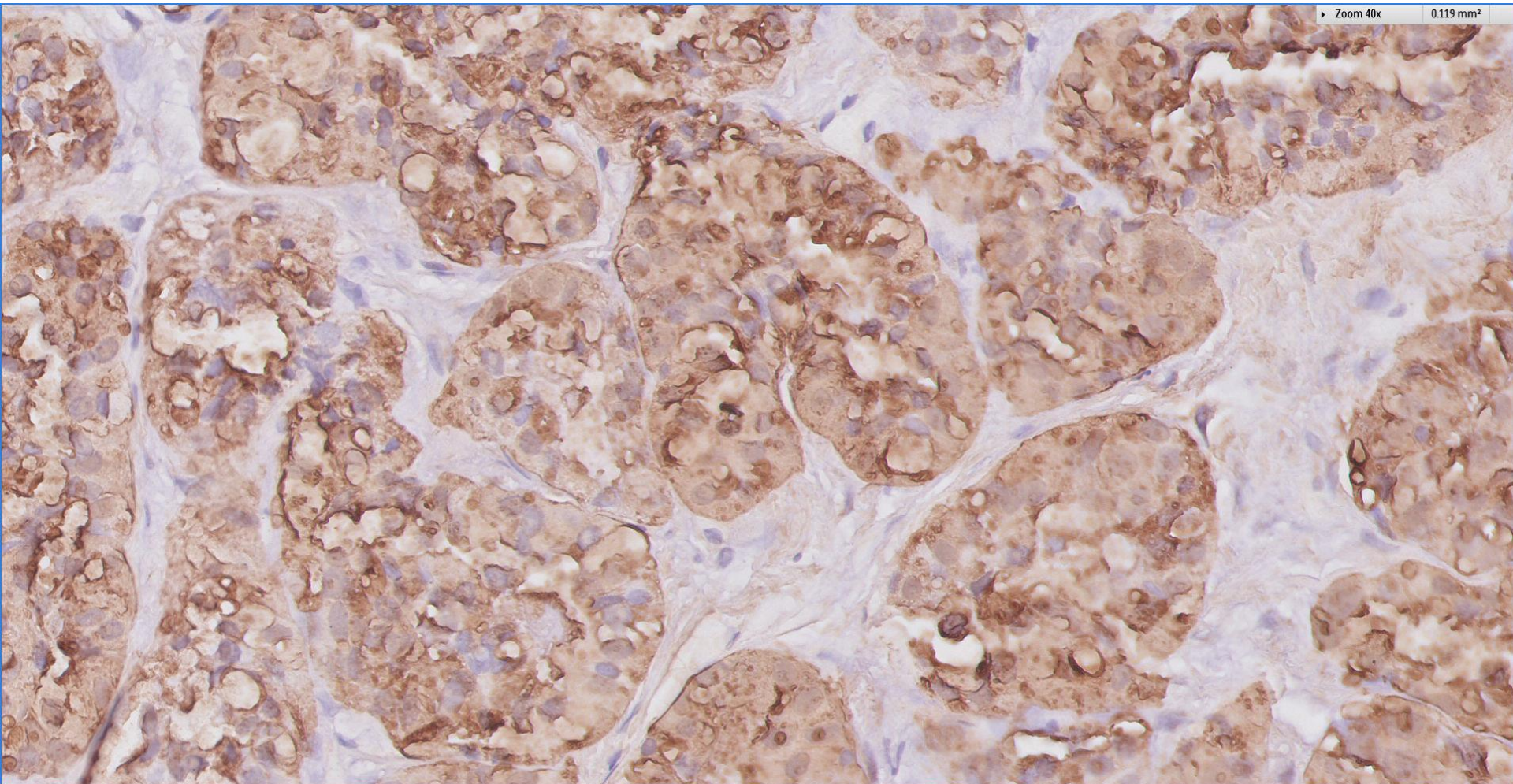
Zoom 2x 30.351 mm<sup>2</sup>



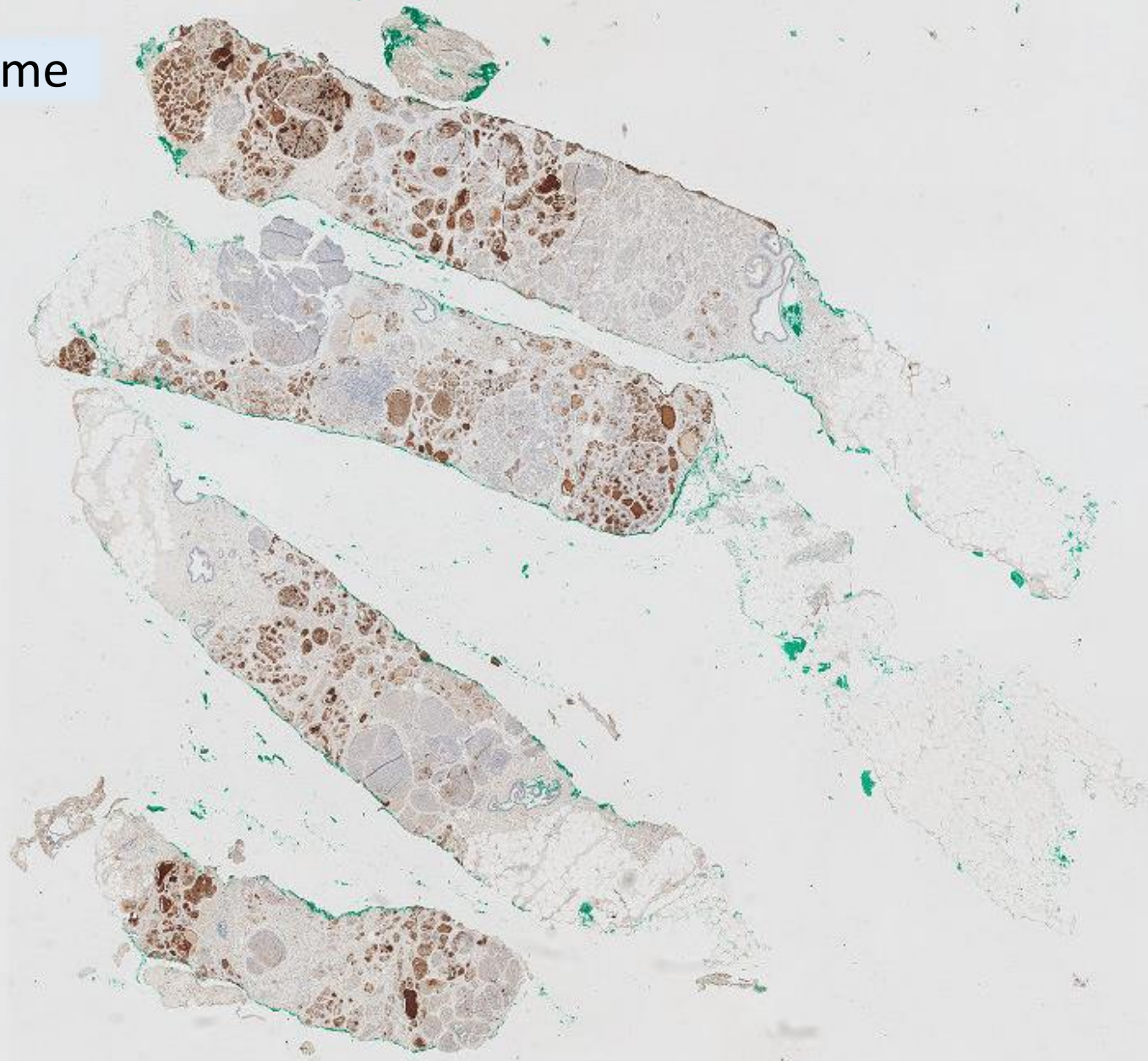
S100



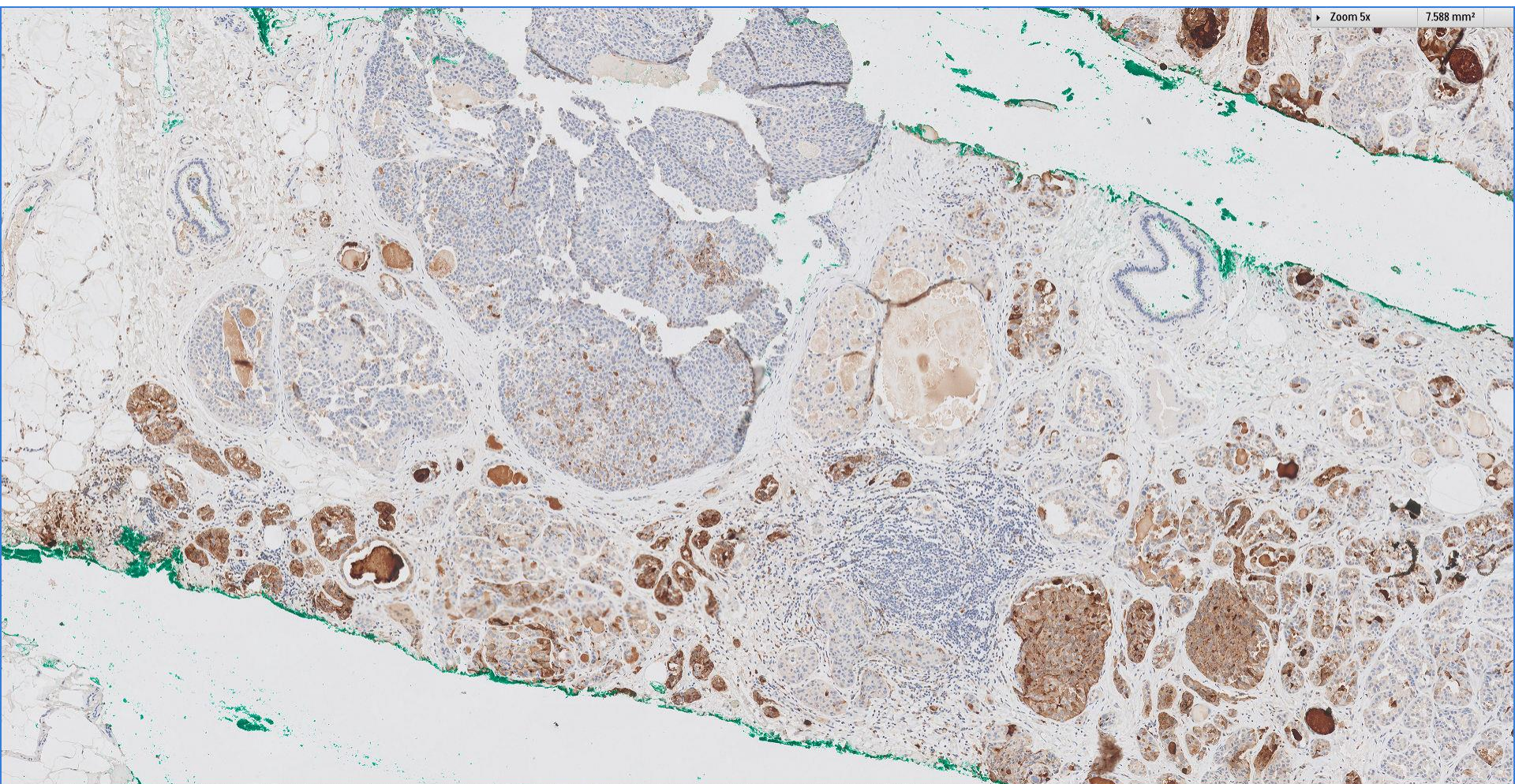
S100



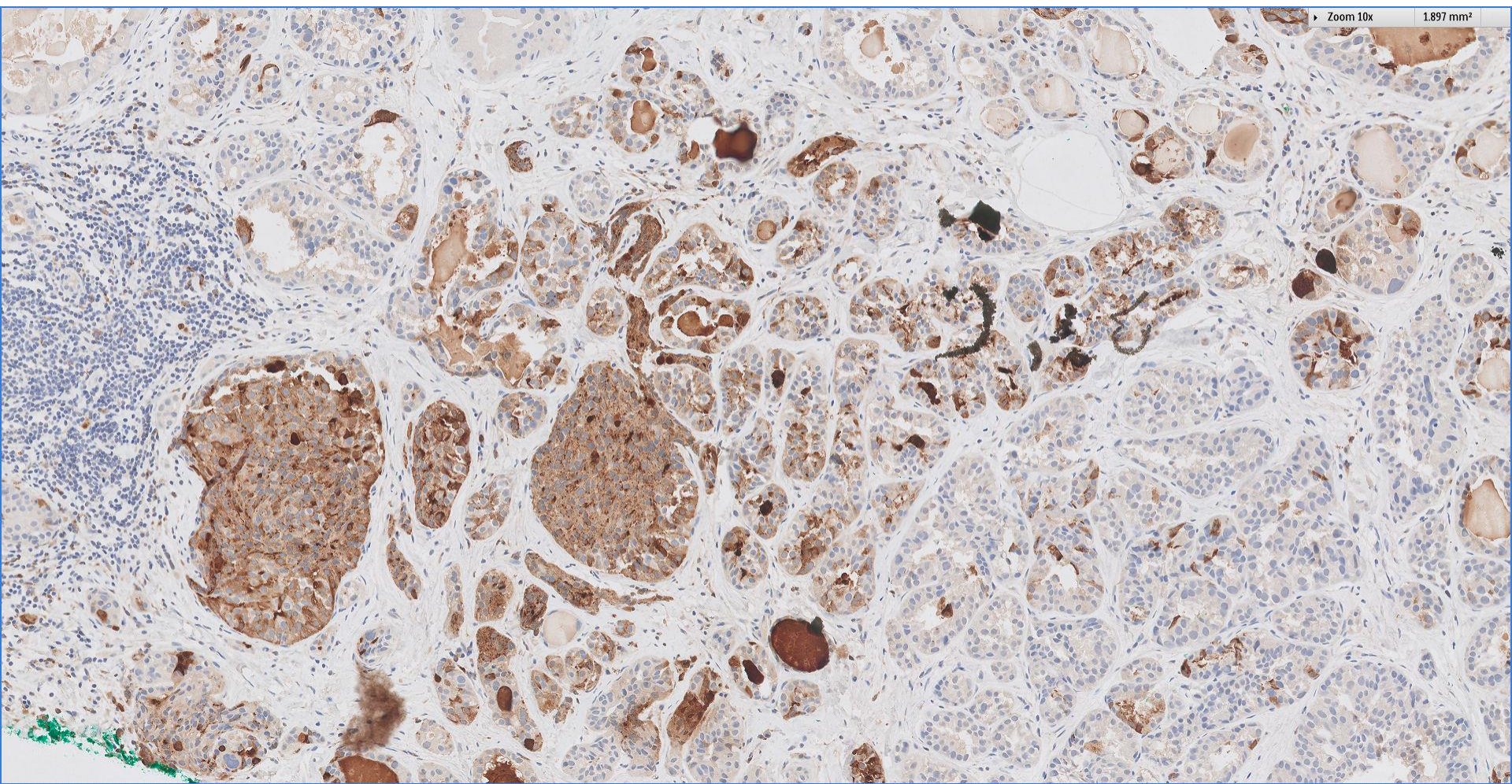
# Lysozyme



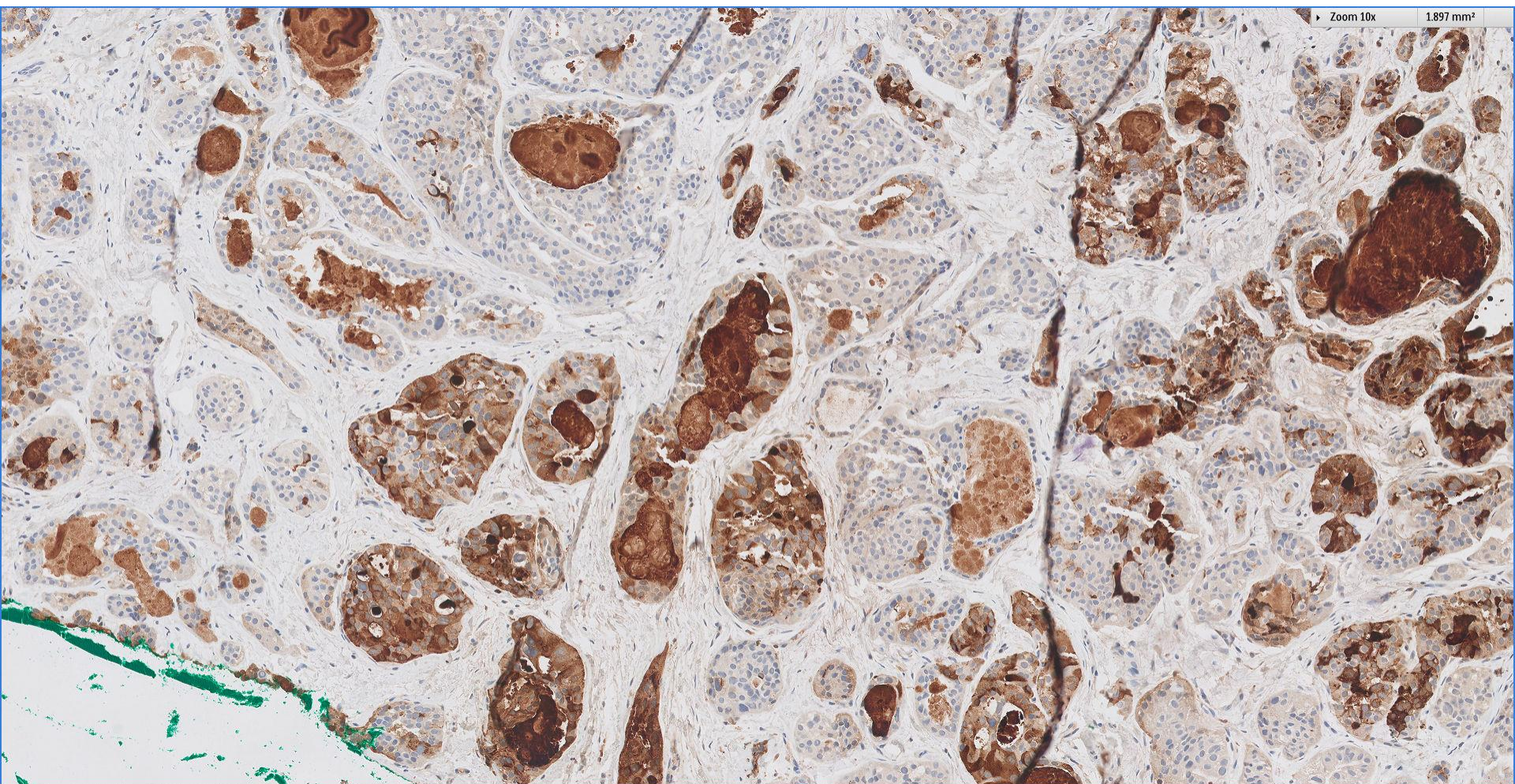
# Lysozyme



# Lysozyme

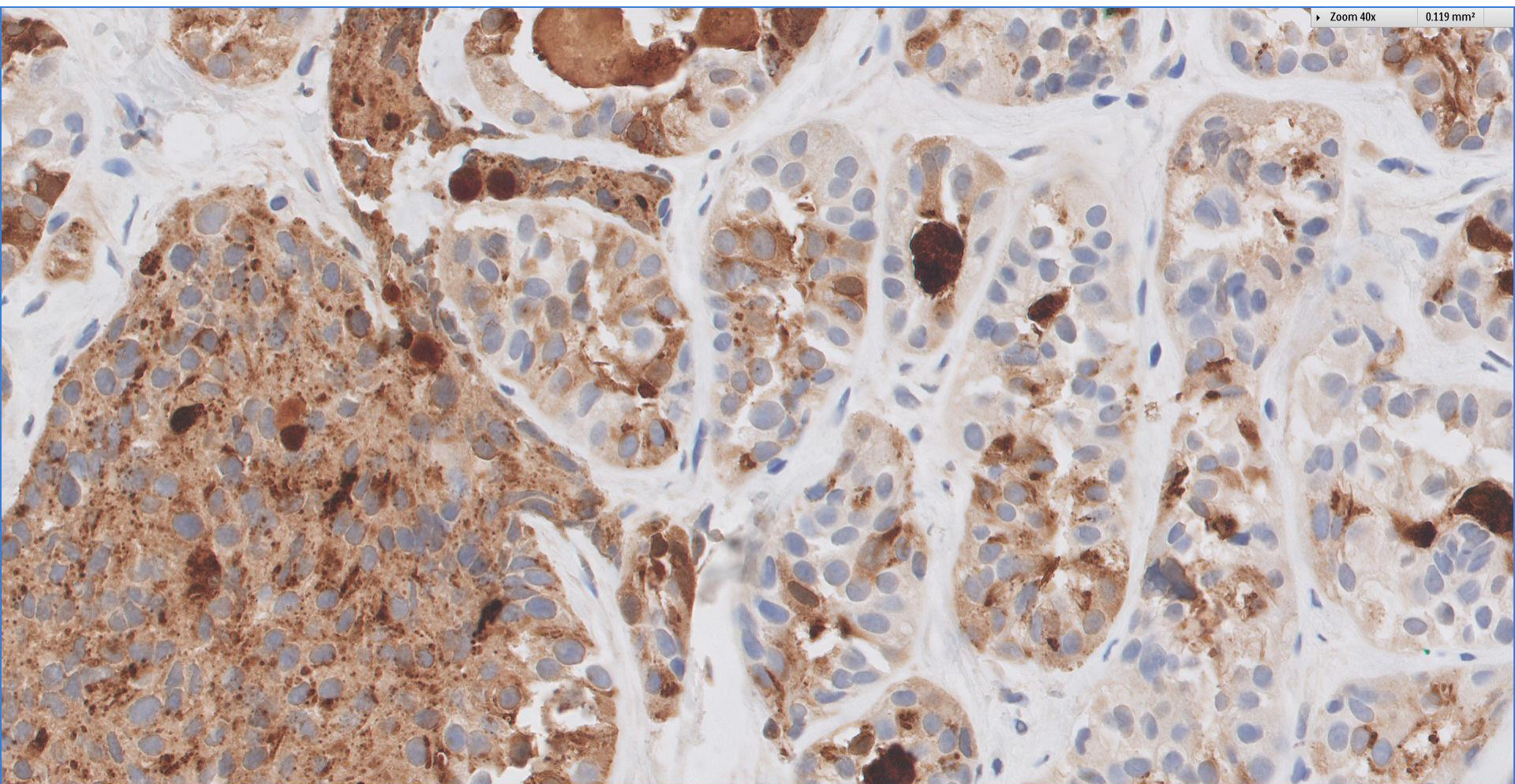


# Lysozyme

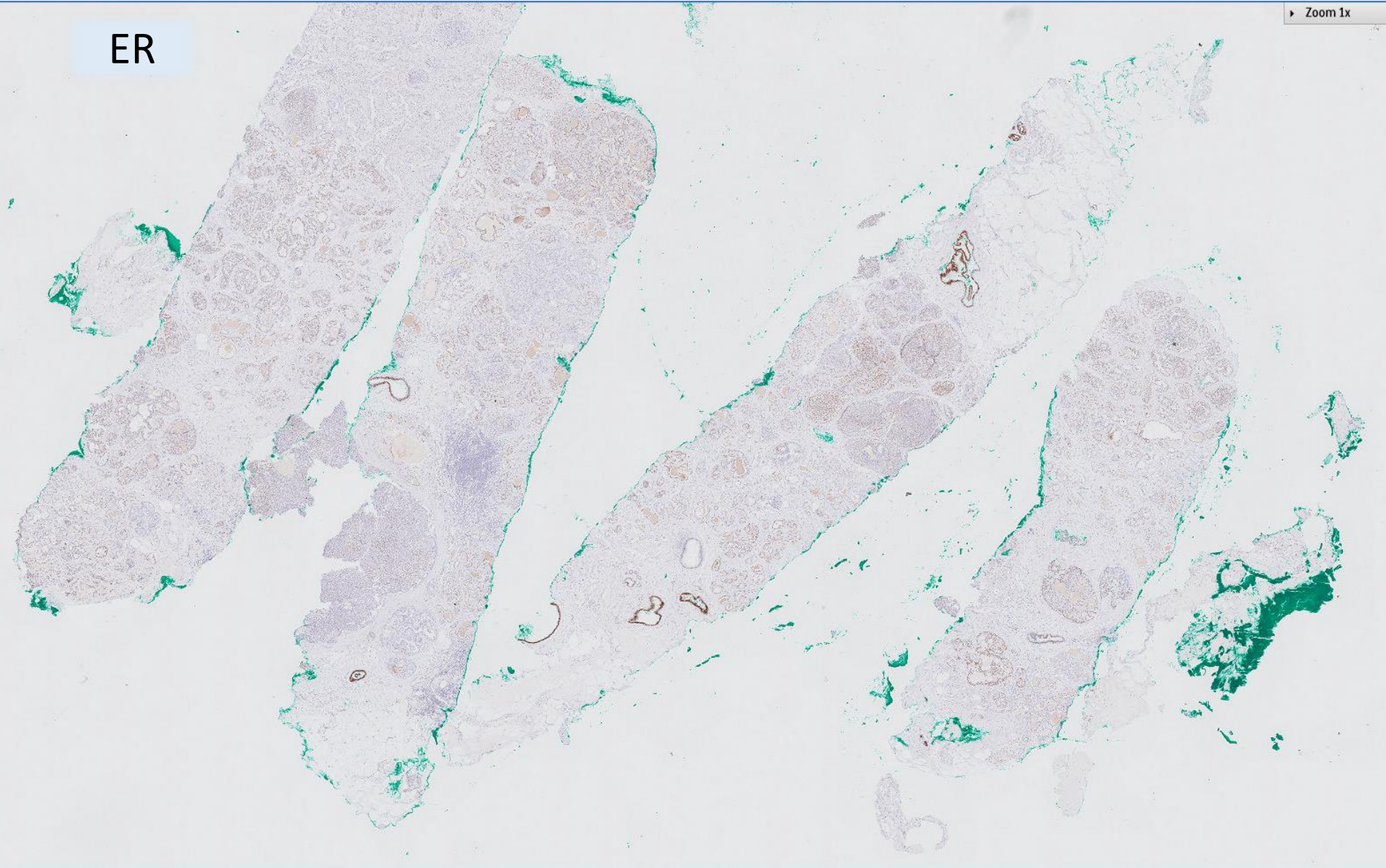




# Lysozyme

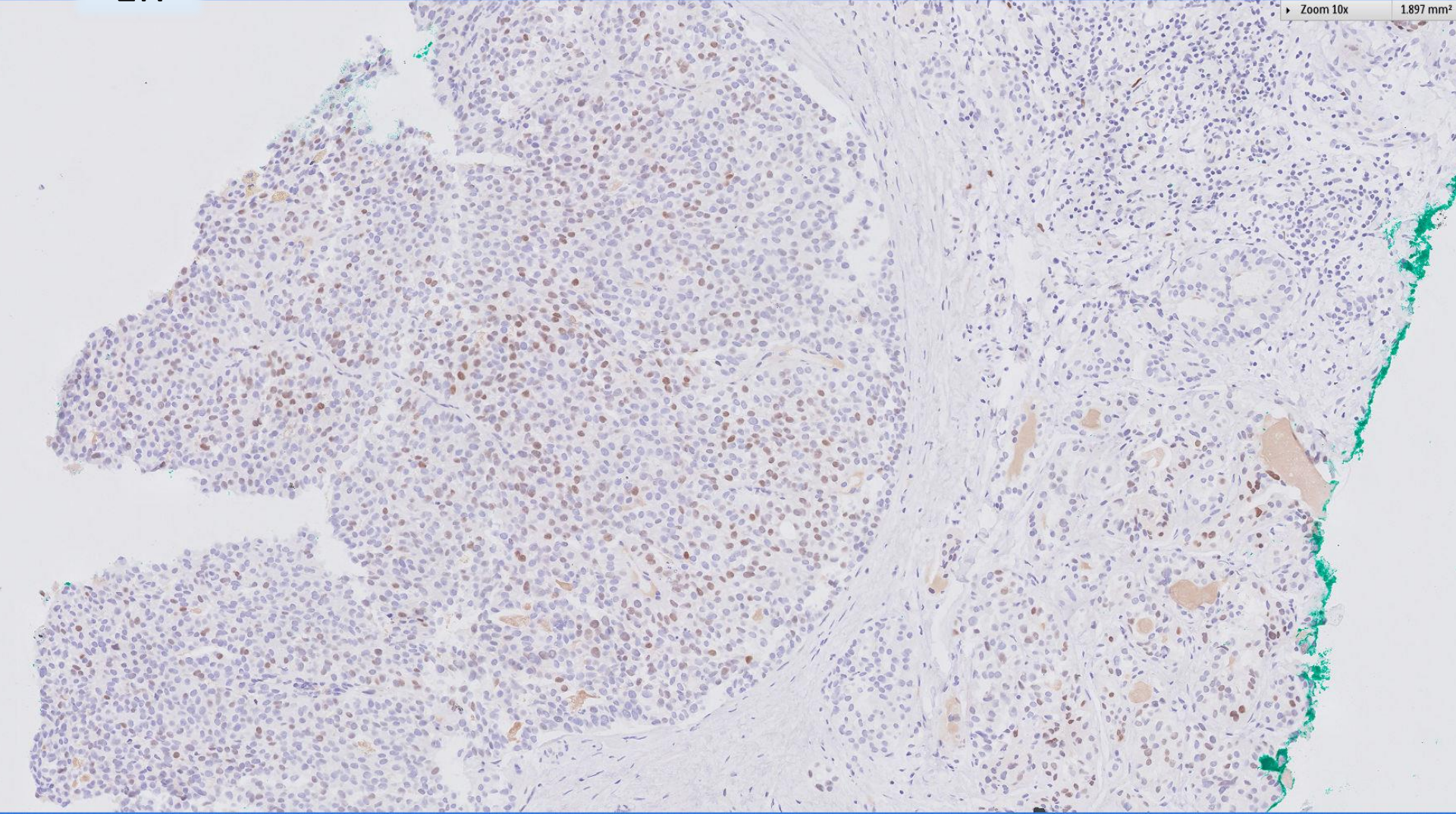


ER

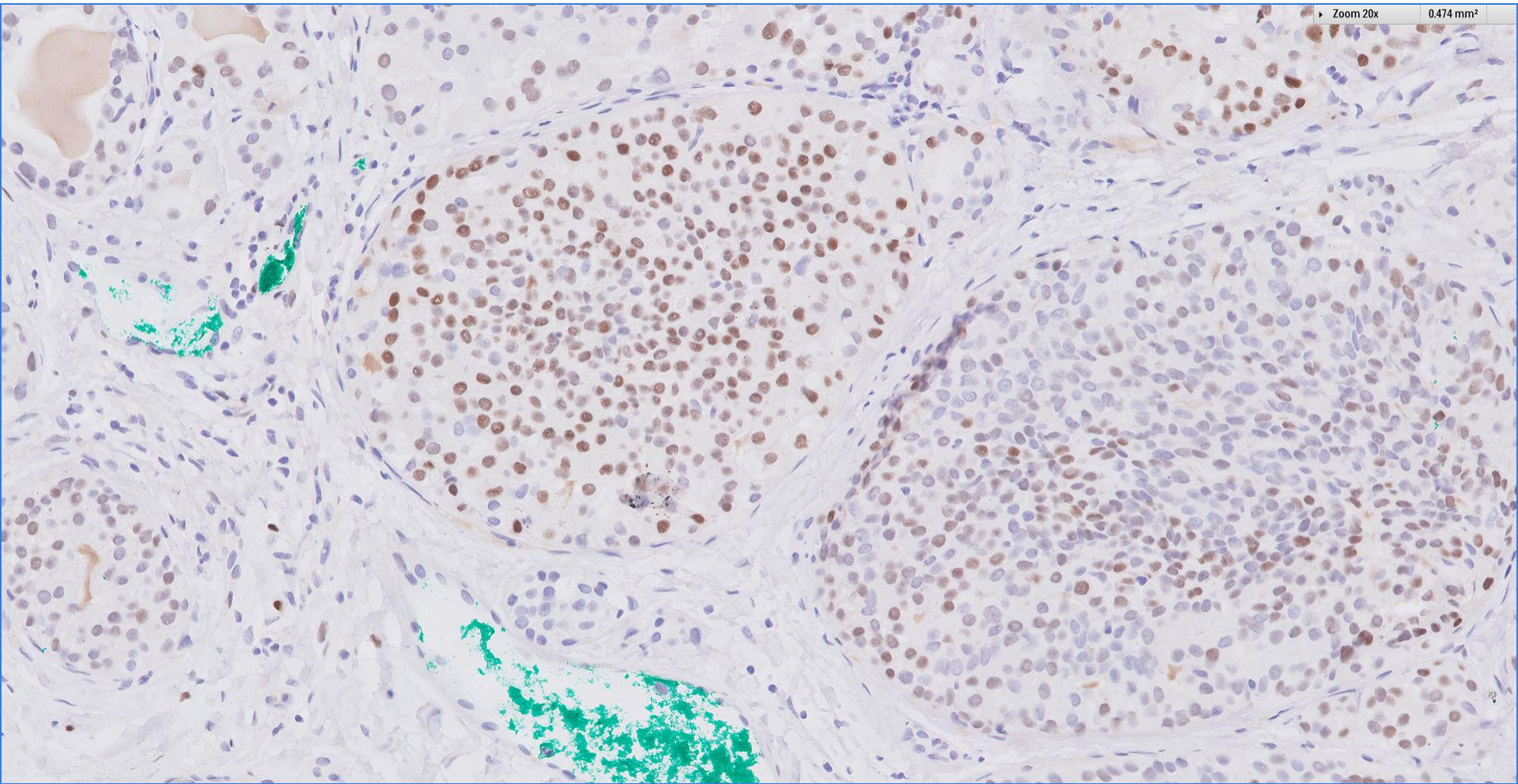


ER

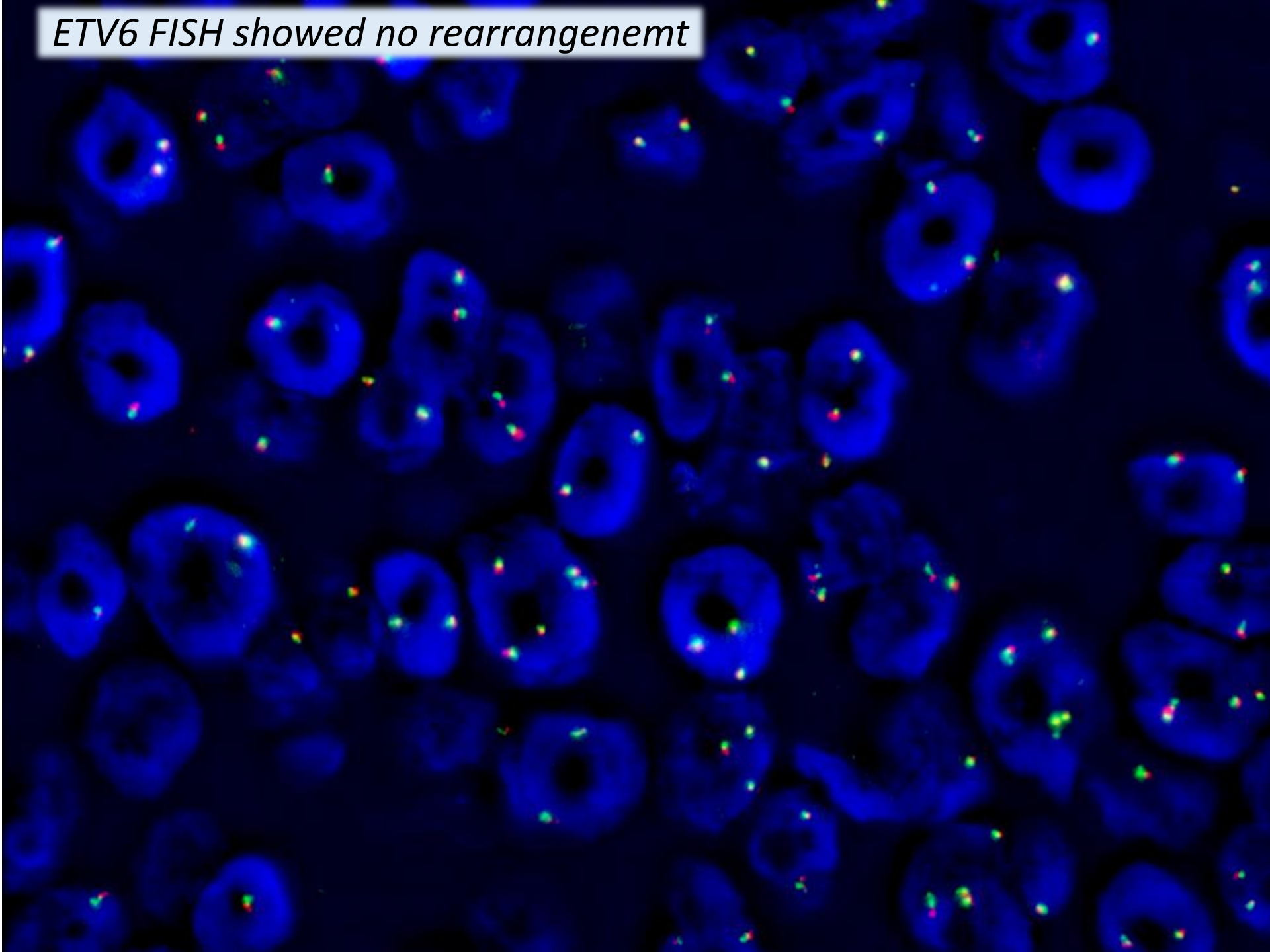
Zoom 10x 1.897 mm<sup>2</sup>



ER



*ETV6 FISH showed no rearrangement*



# Diagnosis

**Ultrasound guided core biopsy of a left breast nodule at 9:30 o'clock ~**

Carcinoma with acinic cell-like features and solid-papillary carcinoma in situ.

ER positive, PR negative, cerbB2 negative.



Singapore  
General Hospital

SingHealth

Division of Pathology



SingHealth DukeNUS  
ACADEMIC MEDICAL CENTRE

PATHOLOGY



IAP

International Academy of Pathology  
Singapore Division

# Wide excision



Singapore  
General Hospital

SingHealth

Division of Pathology

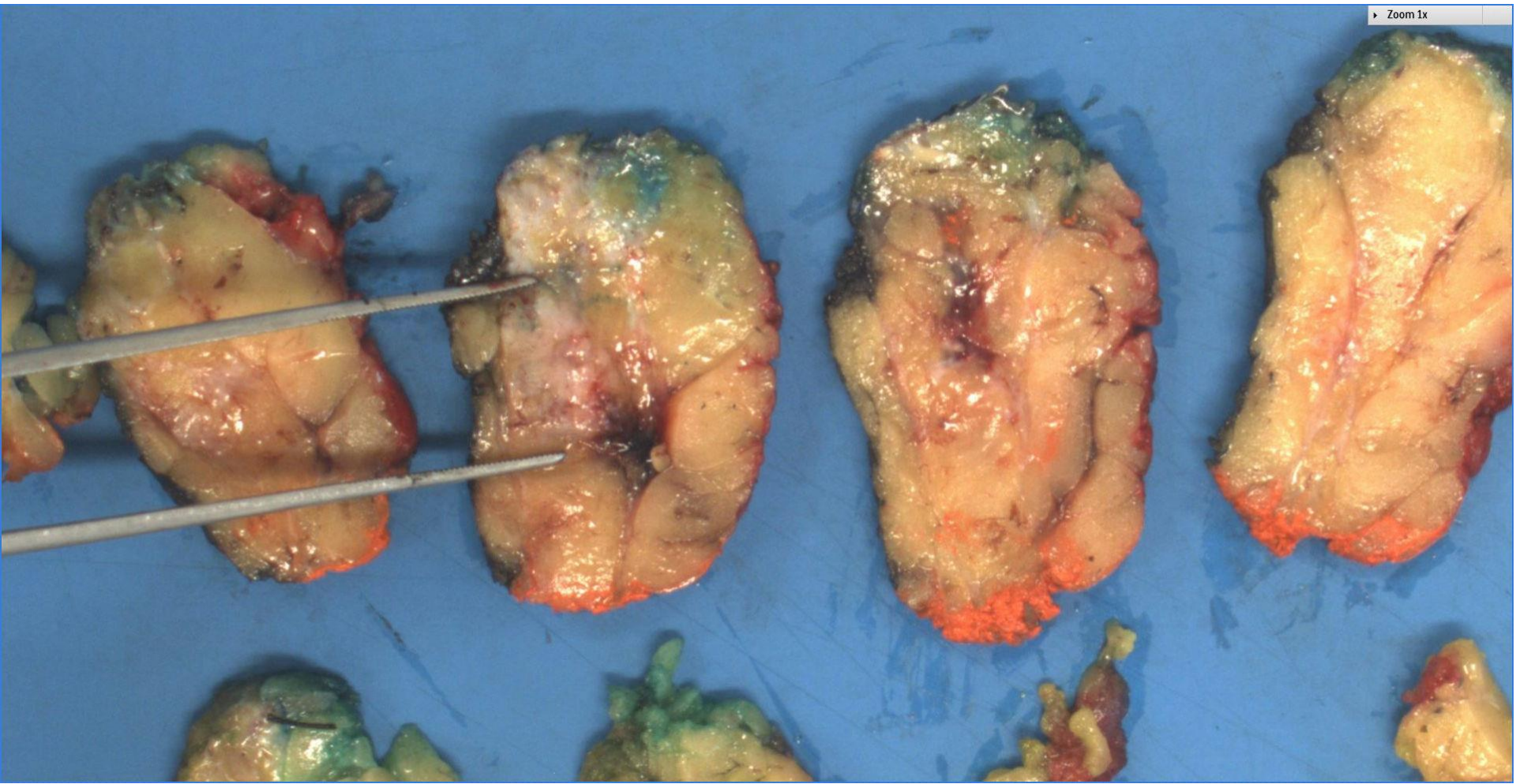


**PATHOLOGY**

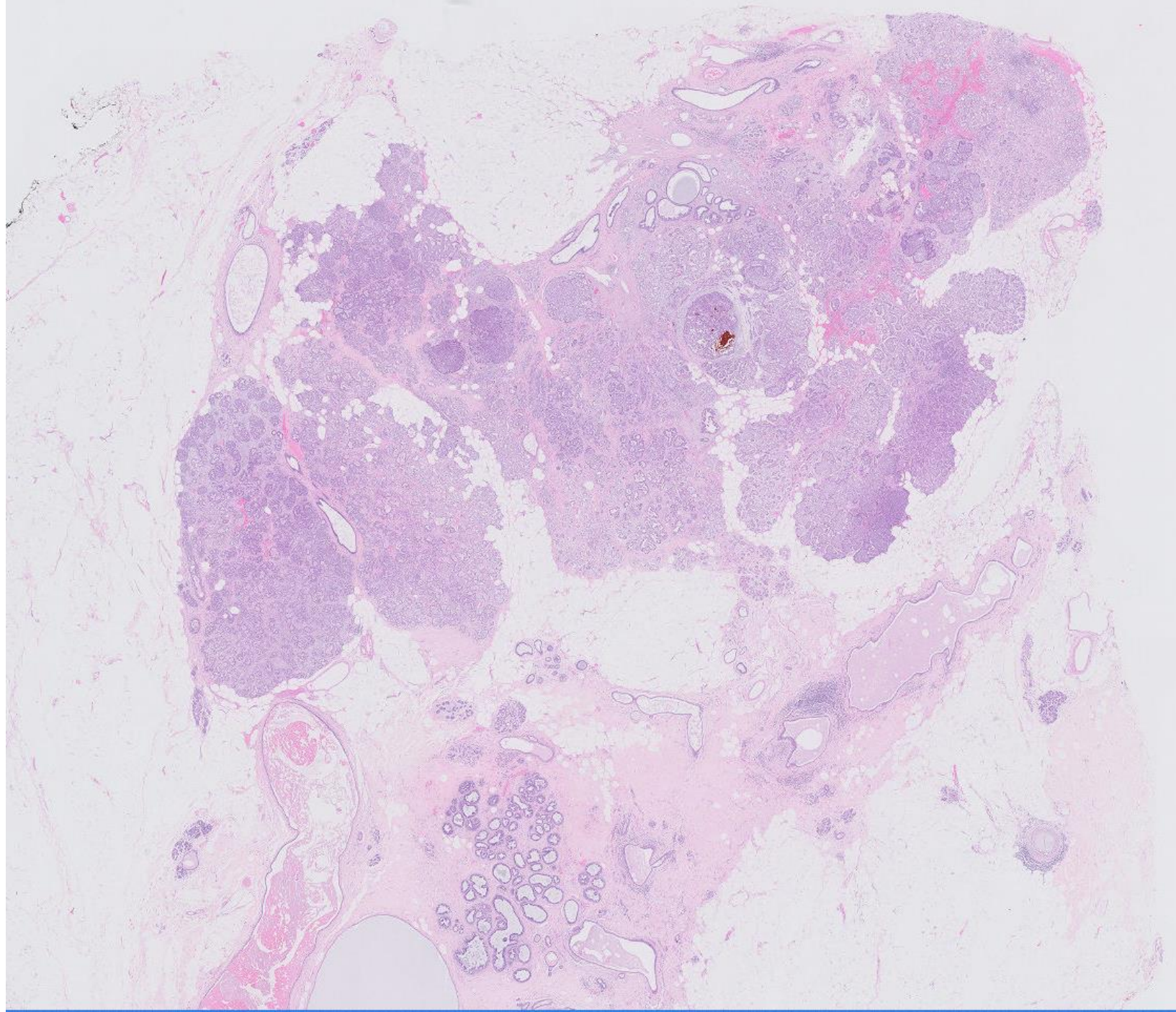
**IAP**

International Academy of Pathology  
Singapore Division



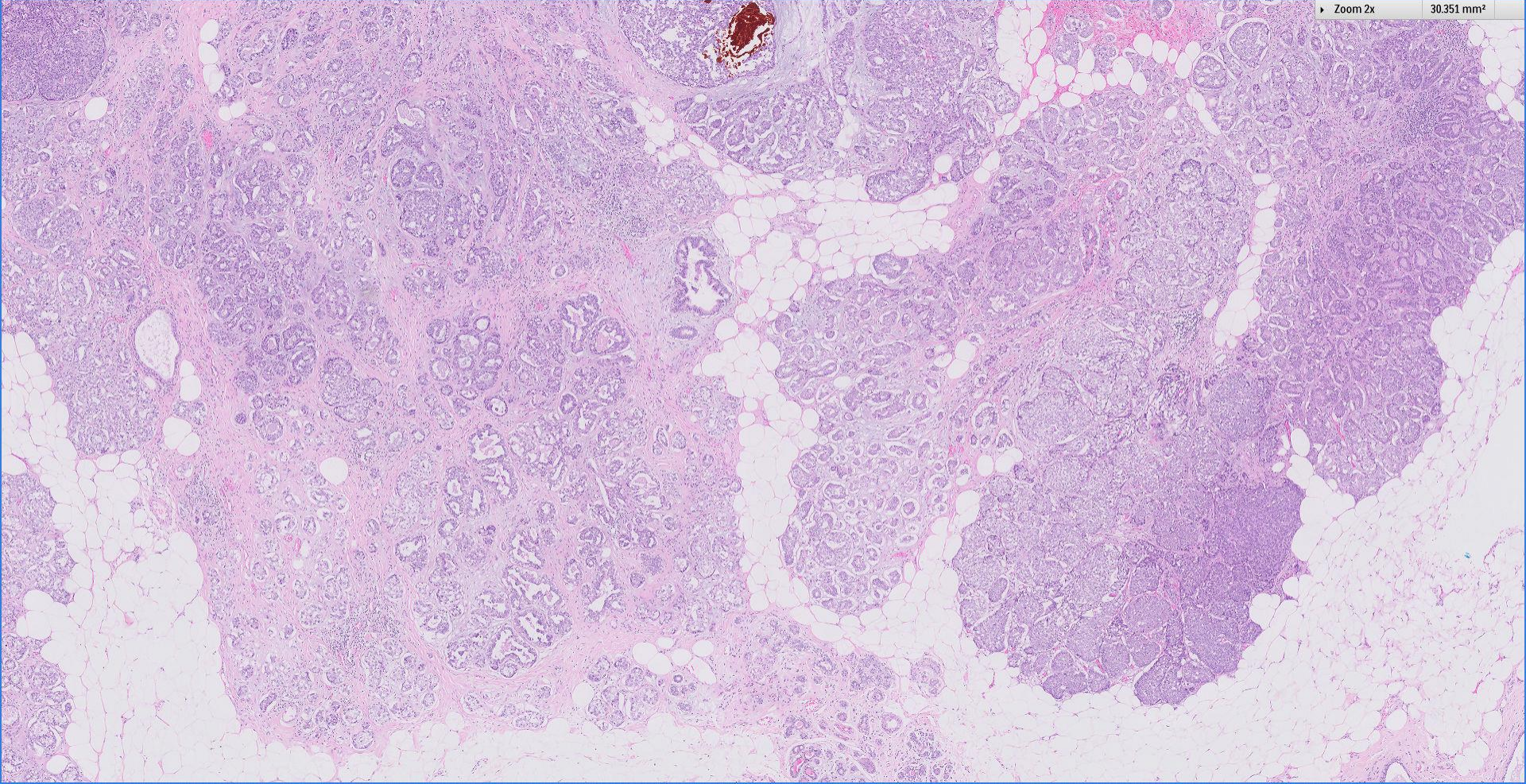






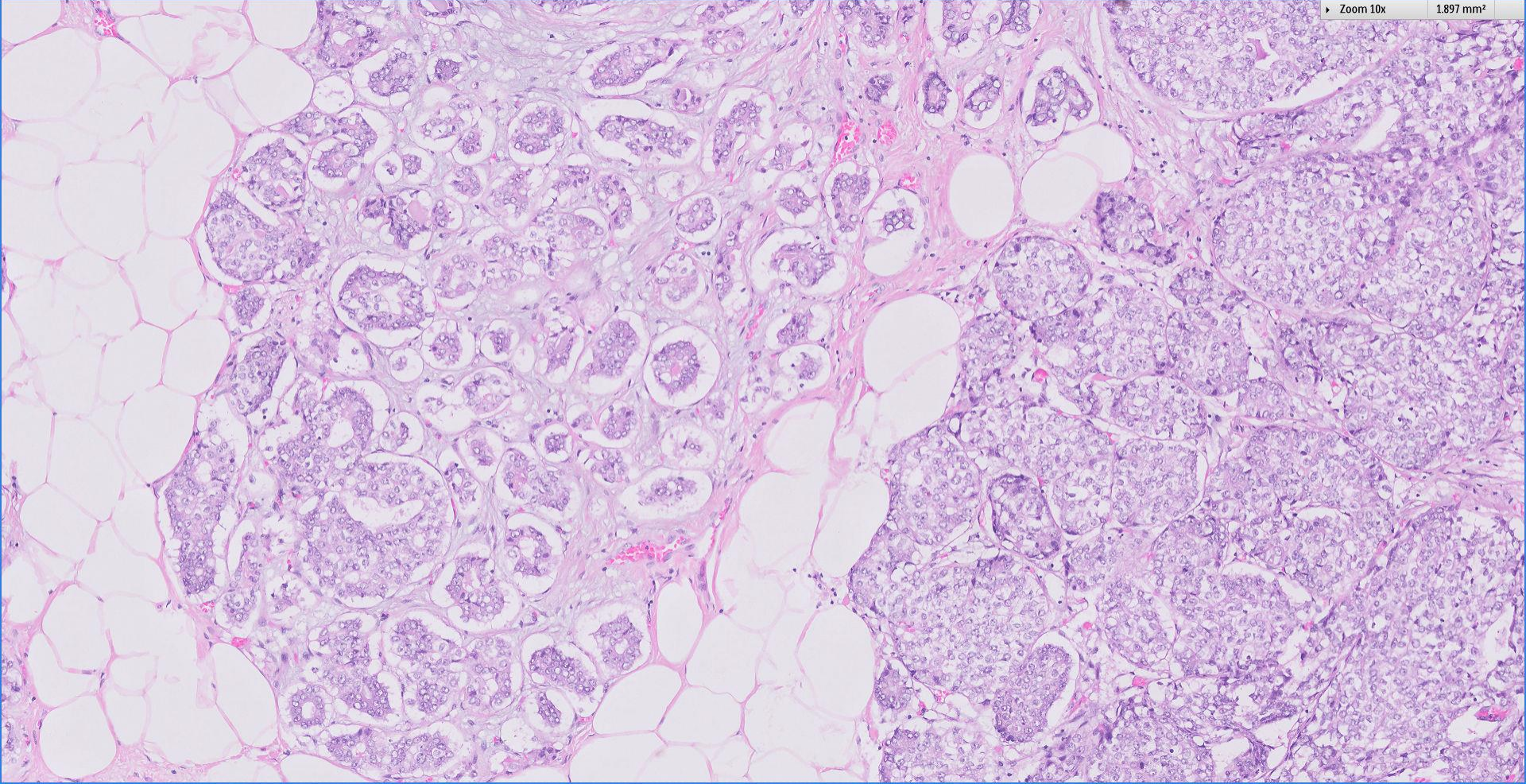
Zoom 2x

30.351 mm<sup>2</sup>



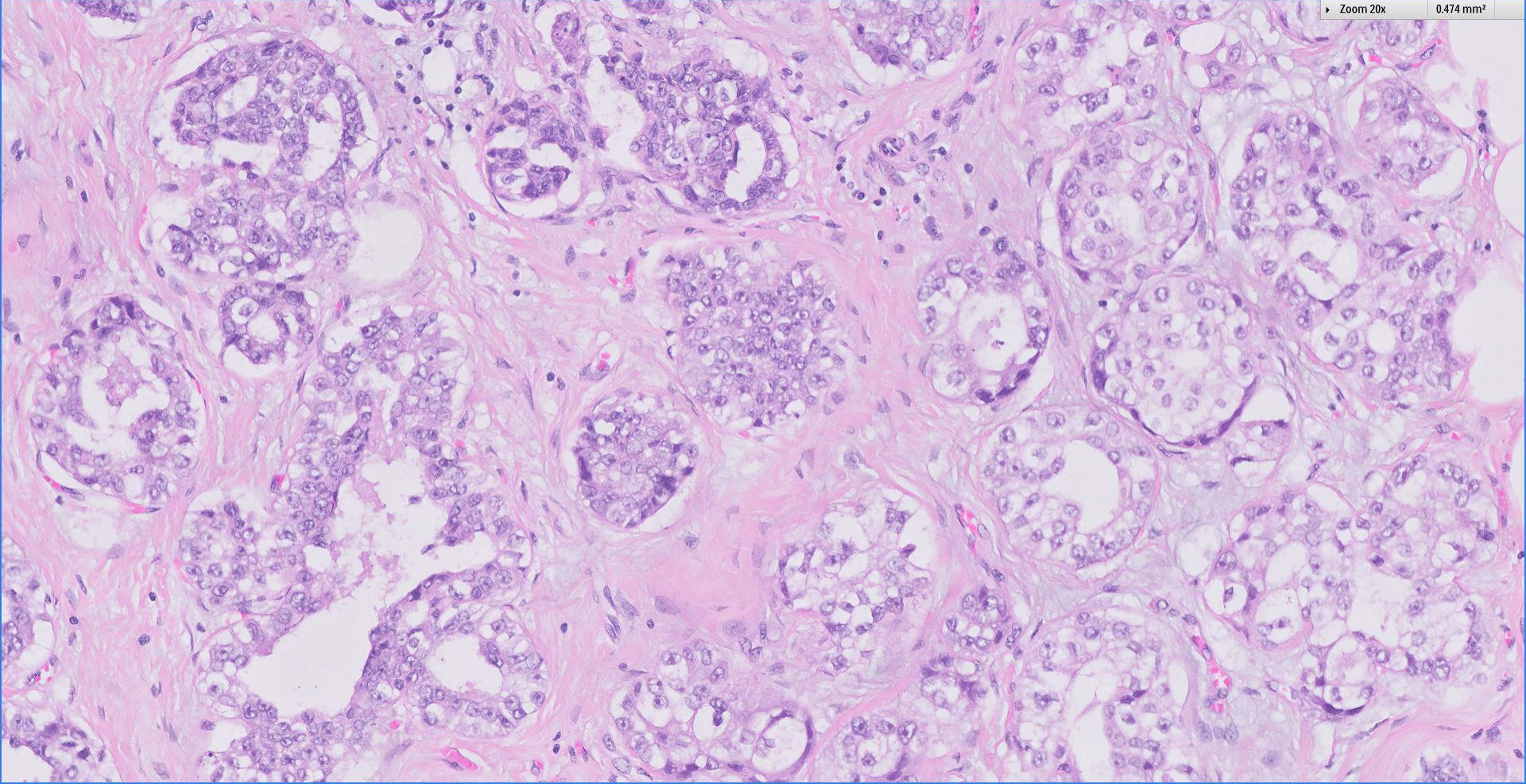
Zoom 10x

1.897 mm<sup>2</sup>



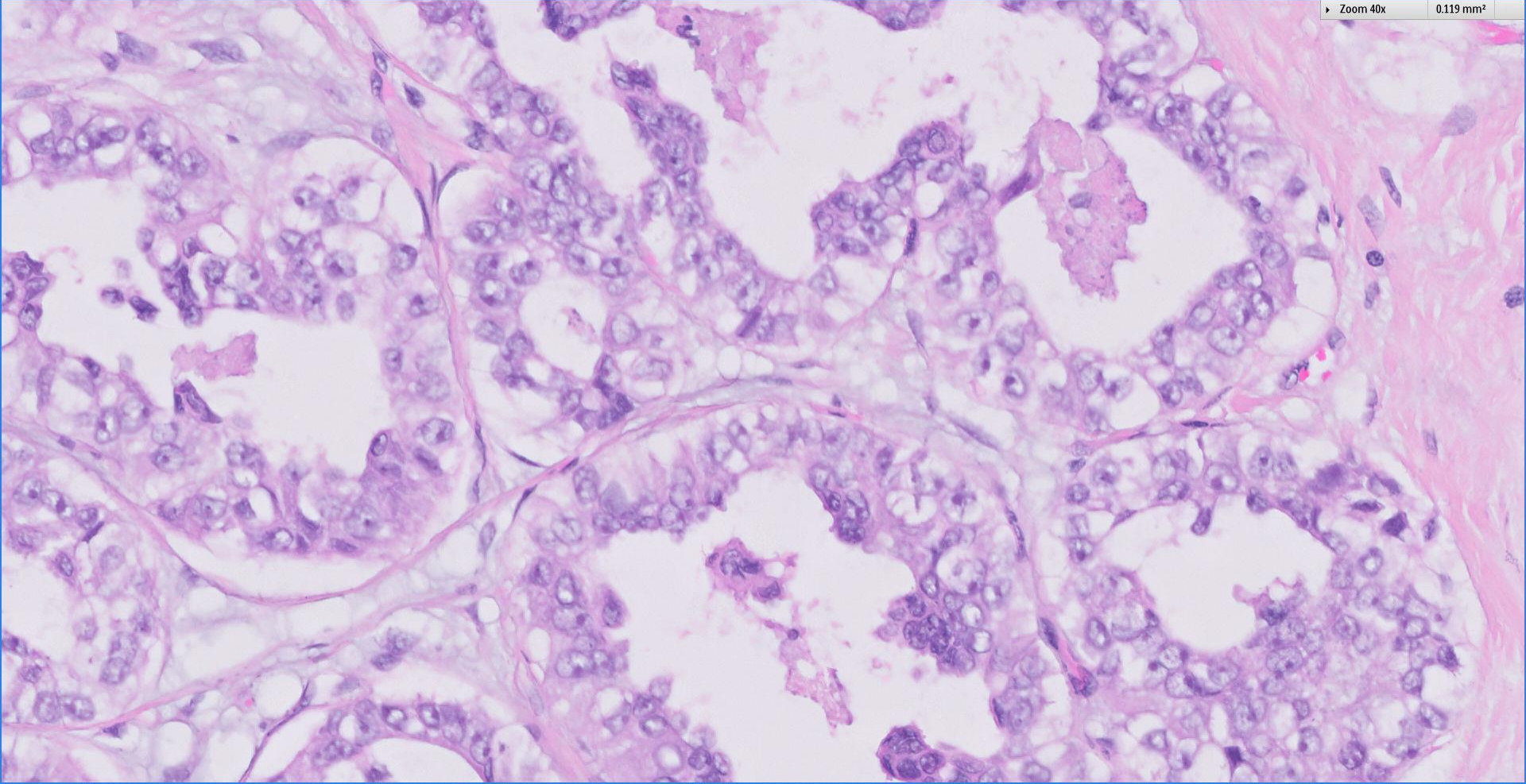
Zoom 20x

0.474 mm<sup>2</sup>



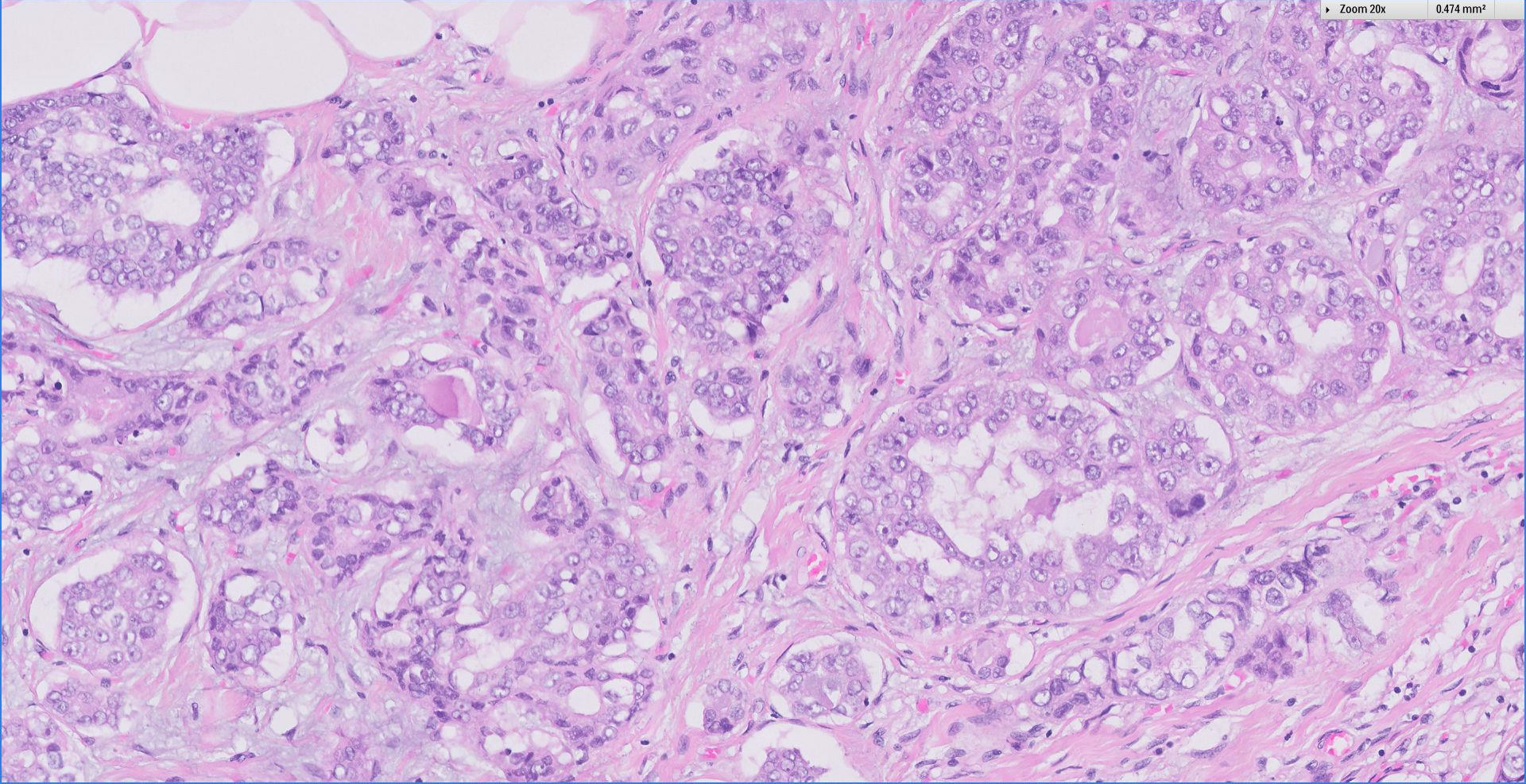
Zoom 40x

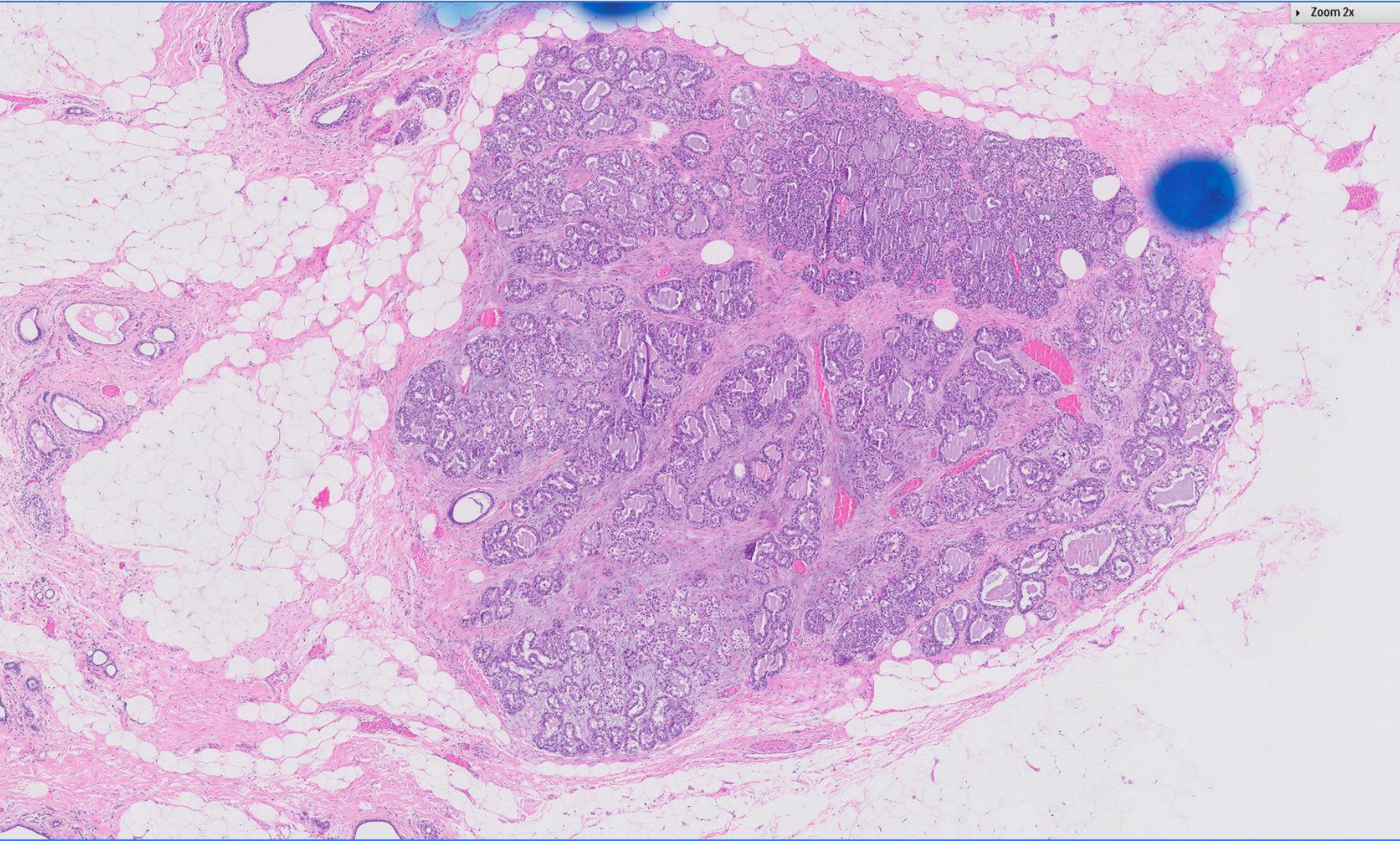
0.119 mm²



Zoom 20x

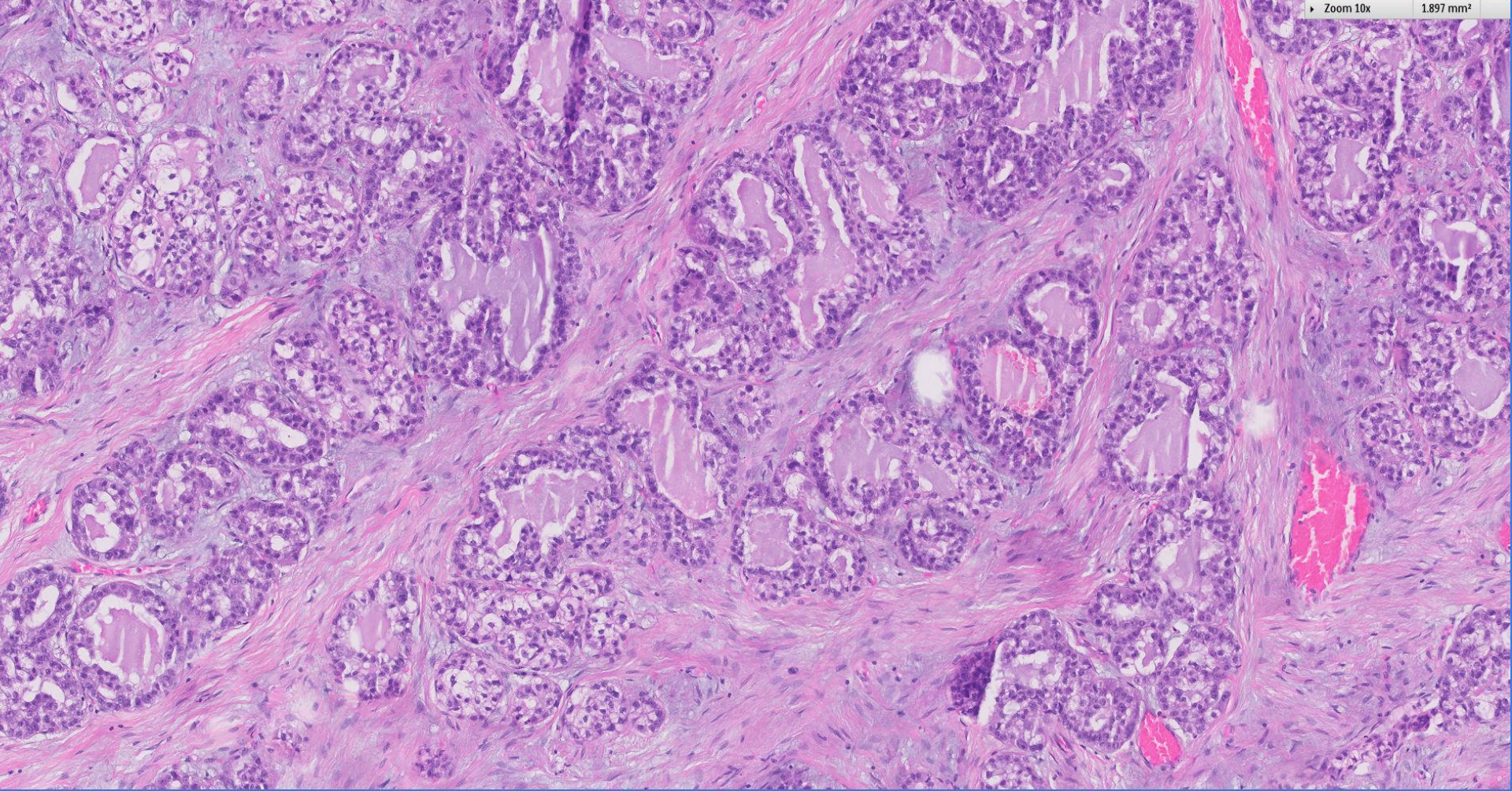
0.474 mm<sup>2</sup>





Zoom 10x

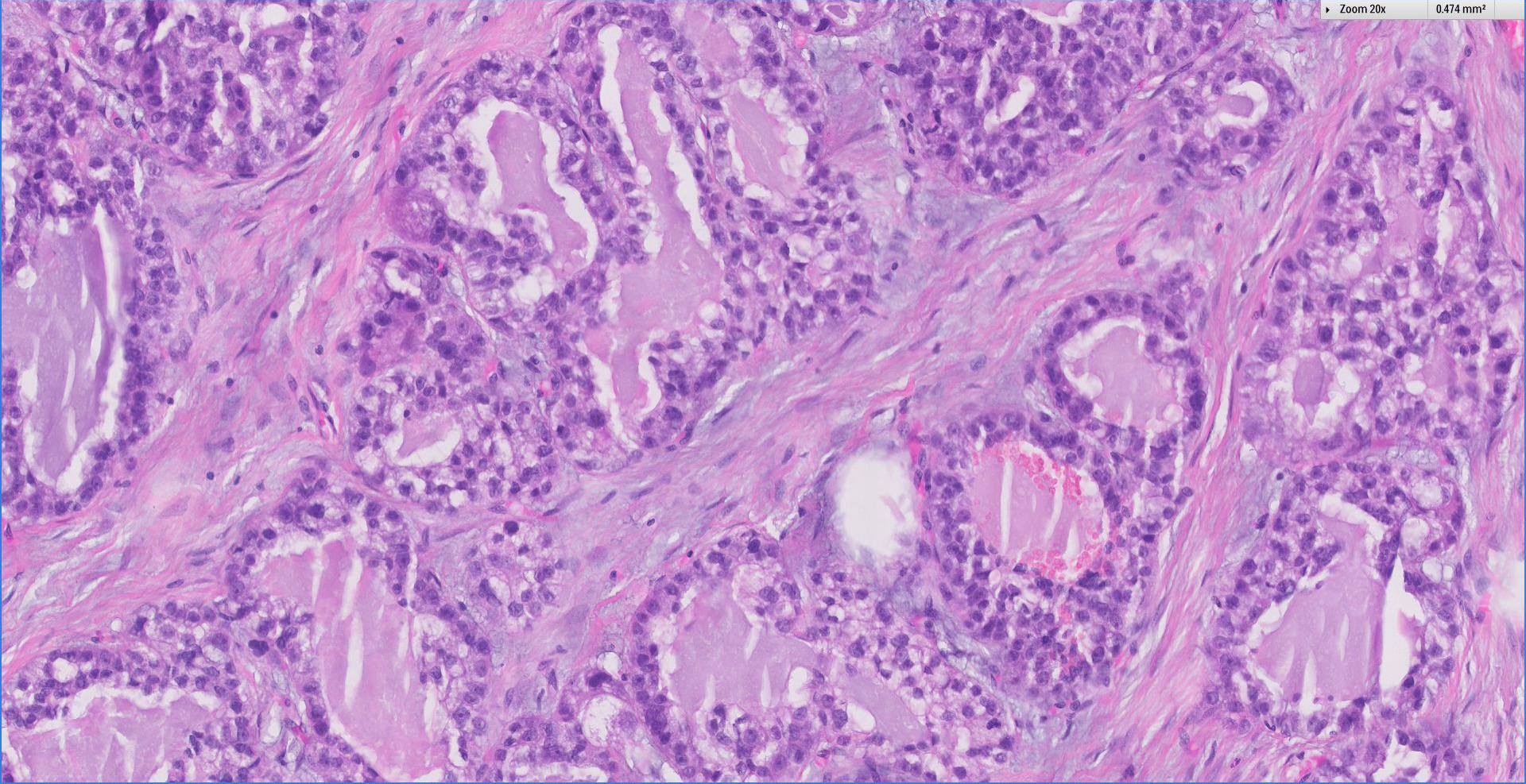
1.897 mm<sup>2</sup>

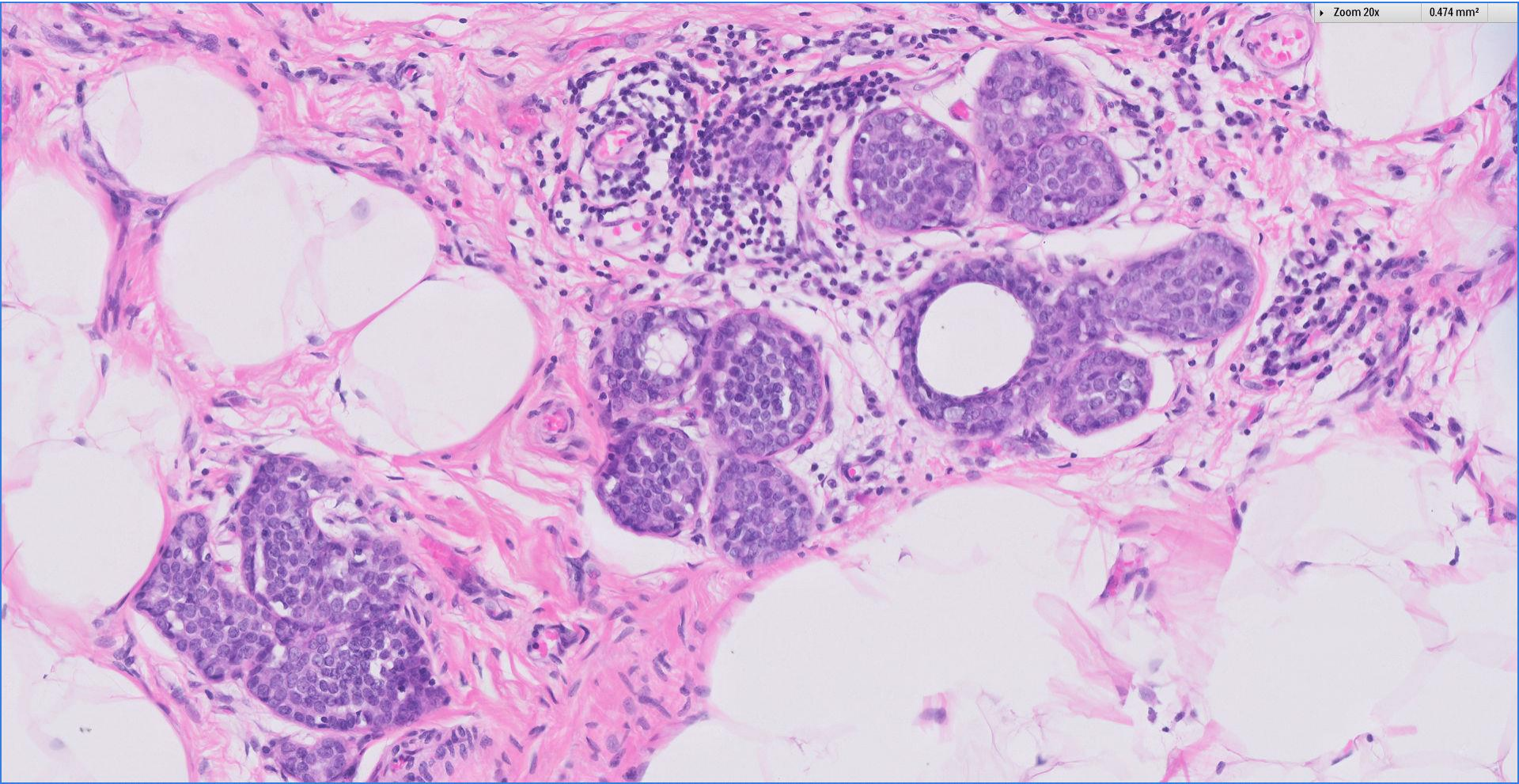




Zoom 20x

0.474 mm<sup>2</sup>





Zoom 20x

0.474 mm²

# Diagnosis

## Left breast wide excision ~

Invasive carcinoma with acinic cell features, grade 2,  
16mm.

Atypical lobular hyperplasia.



Singapore  
General Hospital

SingHealth  
Division of Pathology



SingHealth DukeNUS  
ACADEMIC MEDICAL CENTRE

**PATHOLOGY**



**IAP**

International Academy of Pathology  
Singapore Division

 Breast  
Pathology  
Course 2017

