

## Case 17

29 year old female was discovered to have a right breast lump at the 5 o'clock position.

There was a past history of soft tissue sarcoma in the thigh, previously resected.



Singapore  
General Hospital

SingHealth

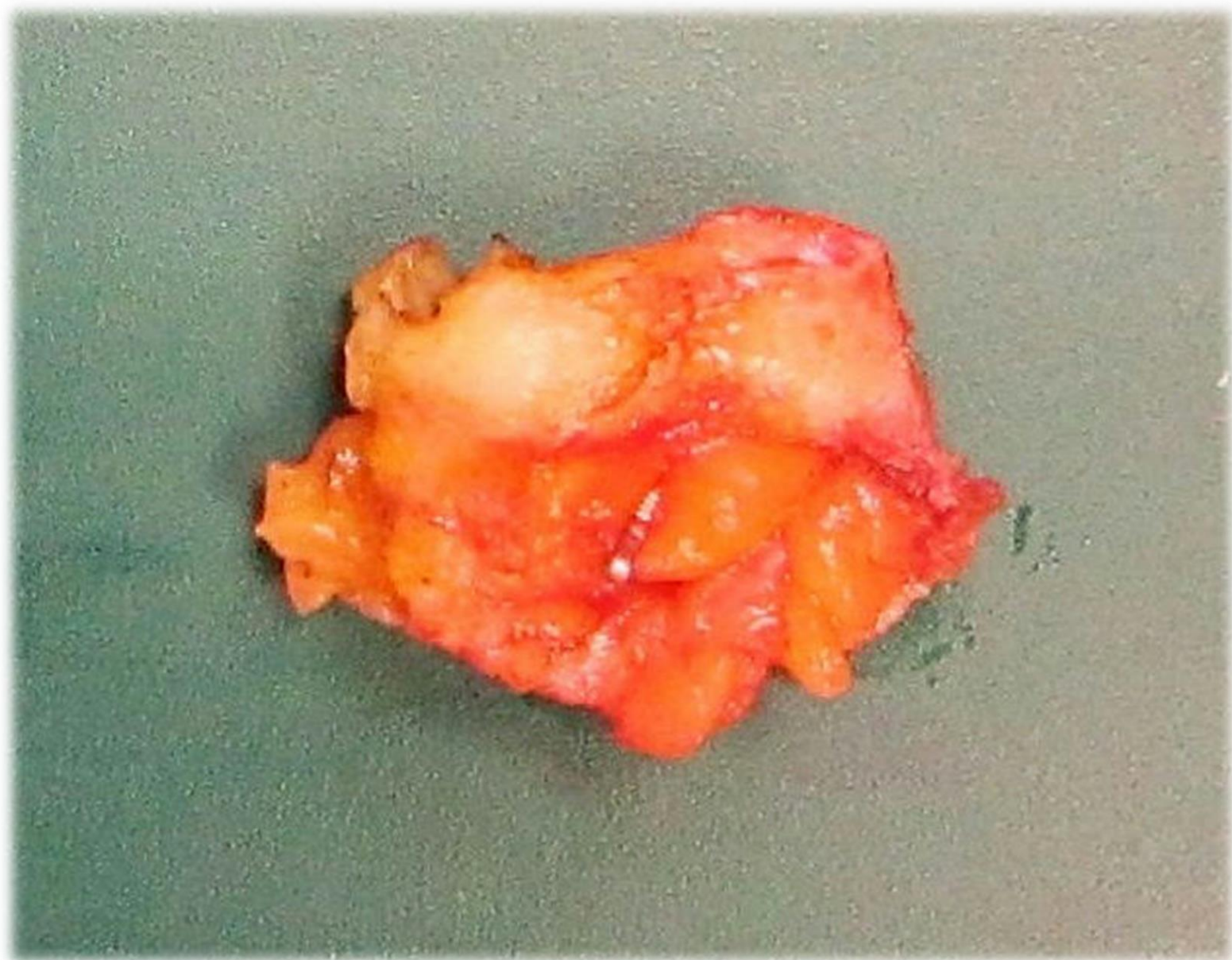
Division of Pathology

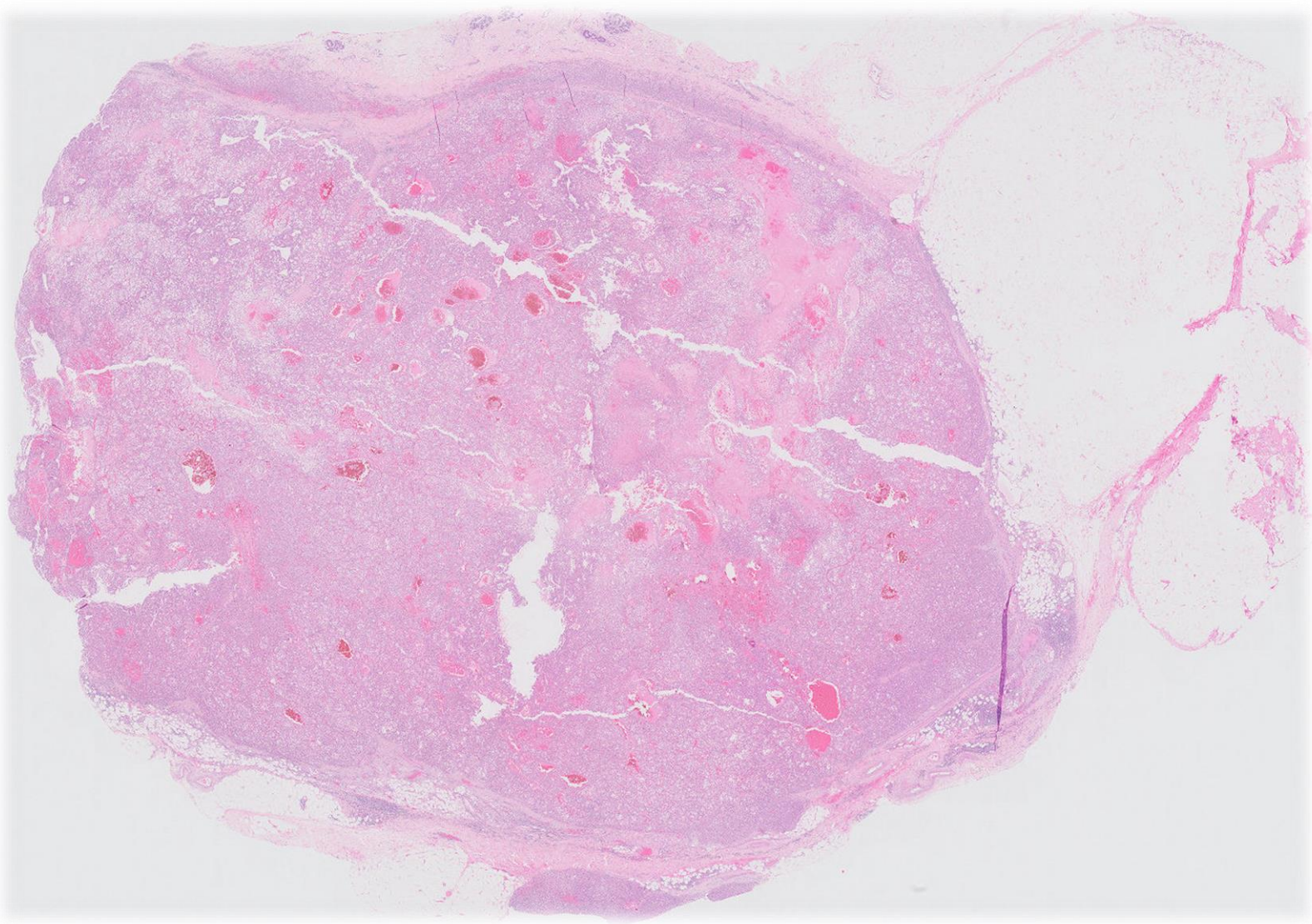


**PATHOLOGY**

**IAP**

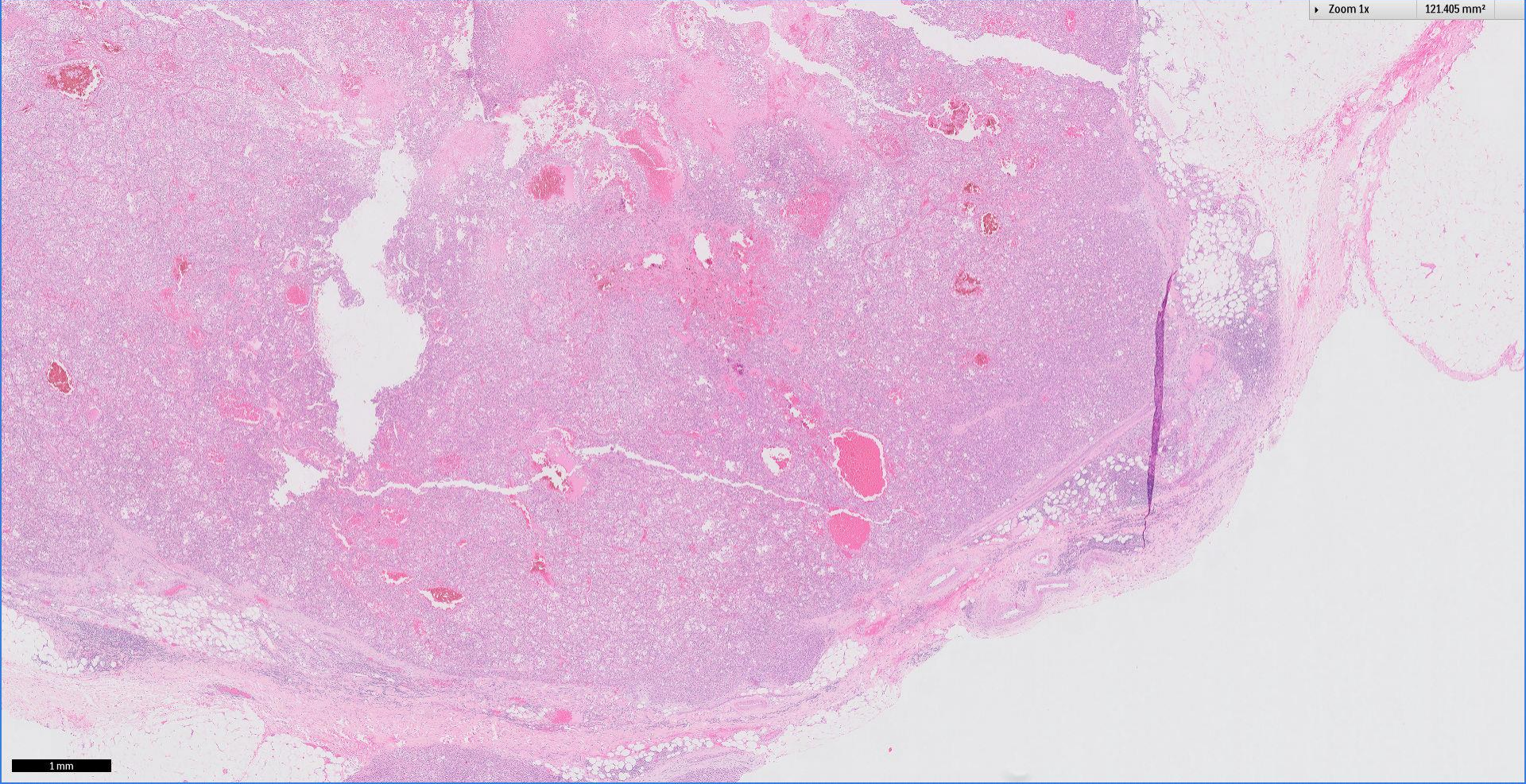
International Academy of Pathology  
Singapore Division





Zoom 1x

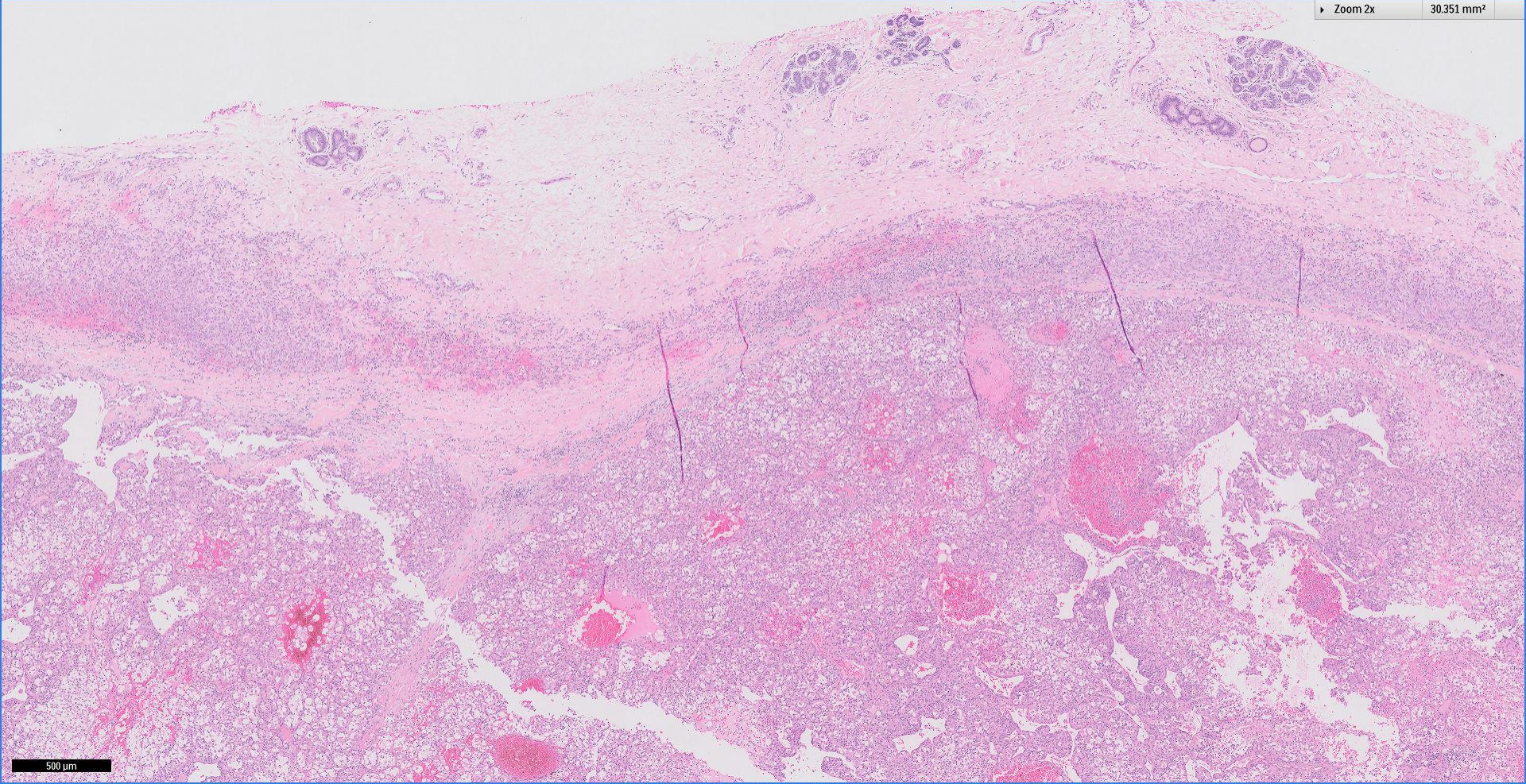
121.405 mm<sup>2</sup>



1 mm

Zoom 2x

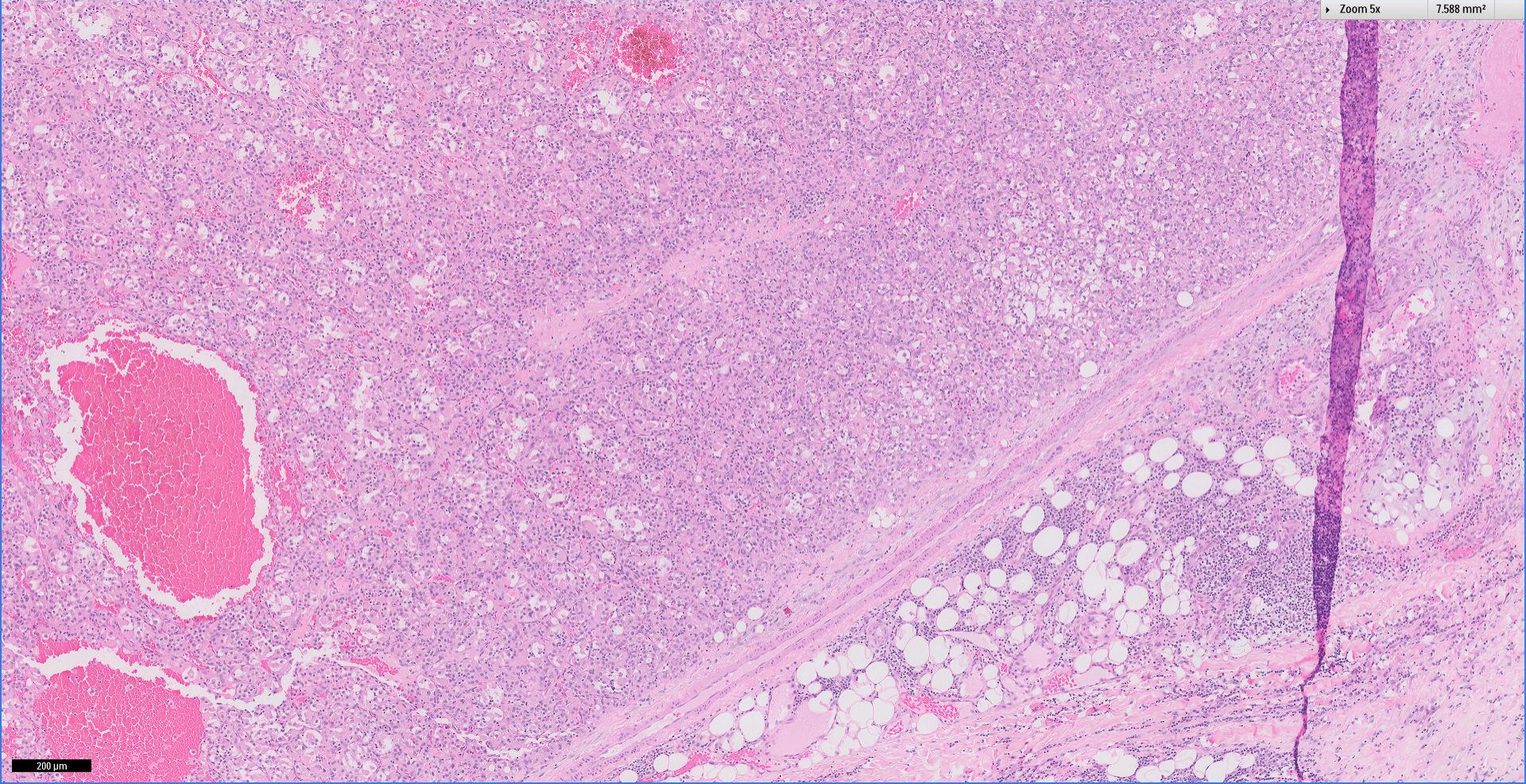
30.351 mm<sup>2</sup>



500 μm

Zoom 5x

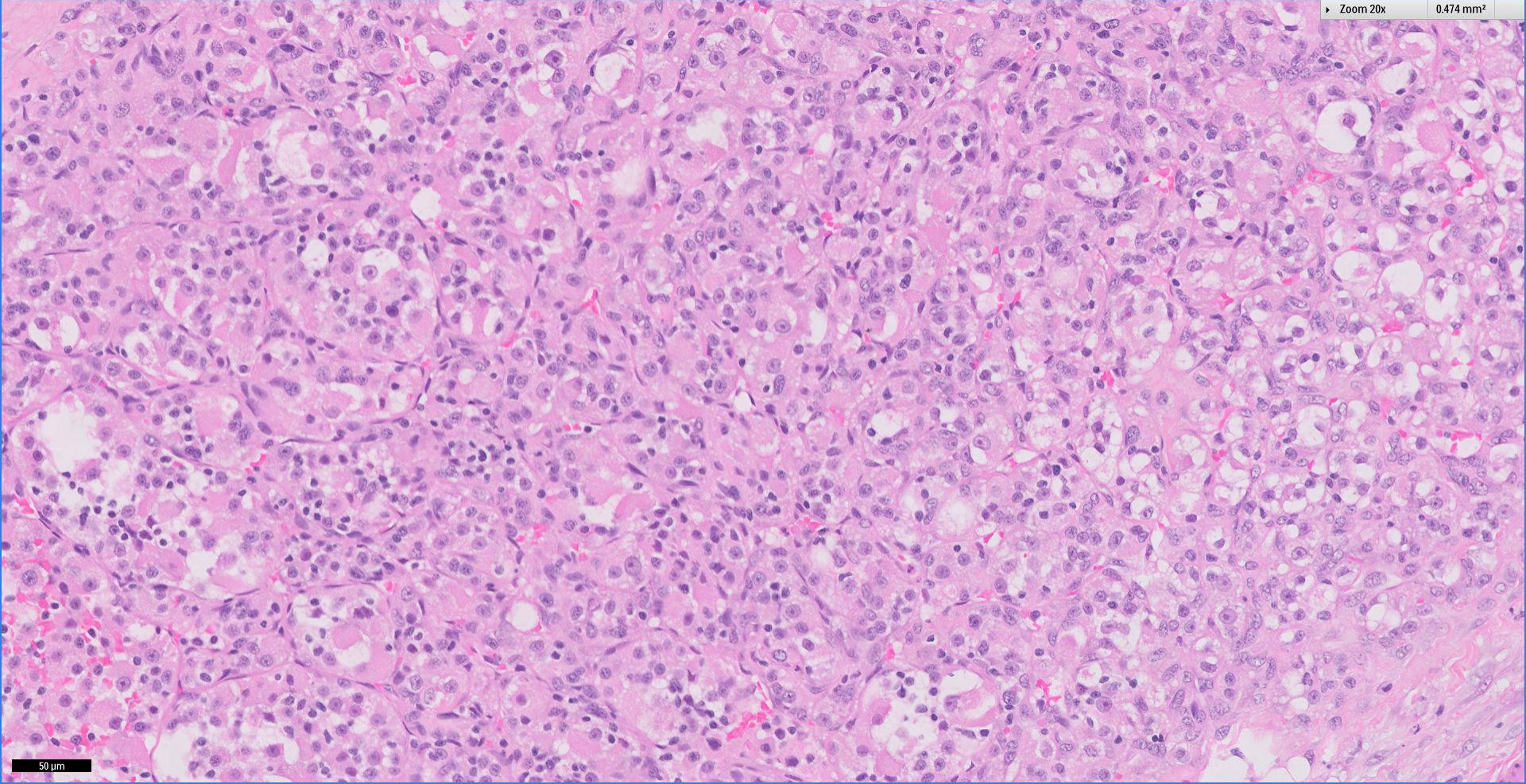
7.588 mm<sup>2</sup>



200 μm

Zoom 20x

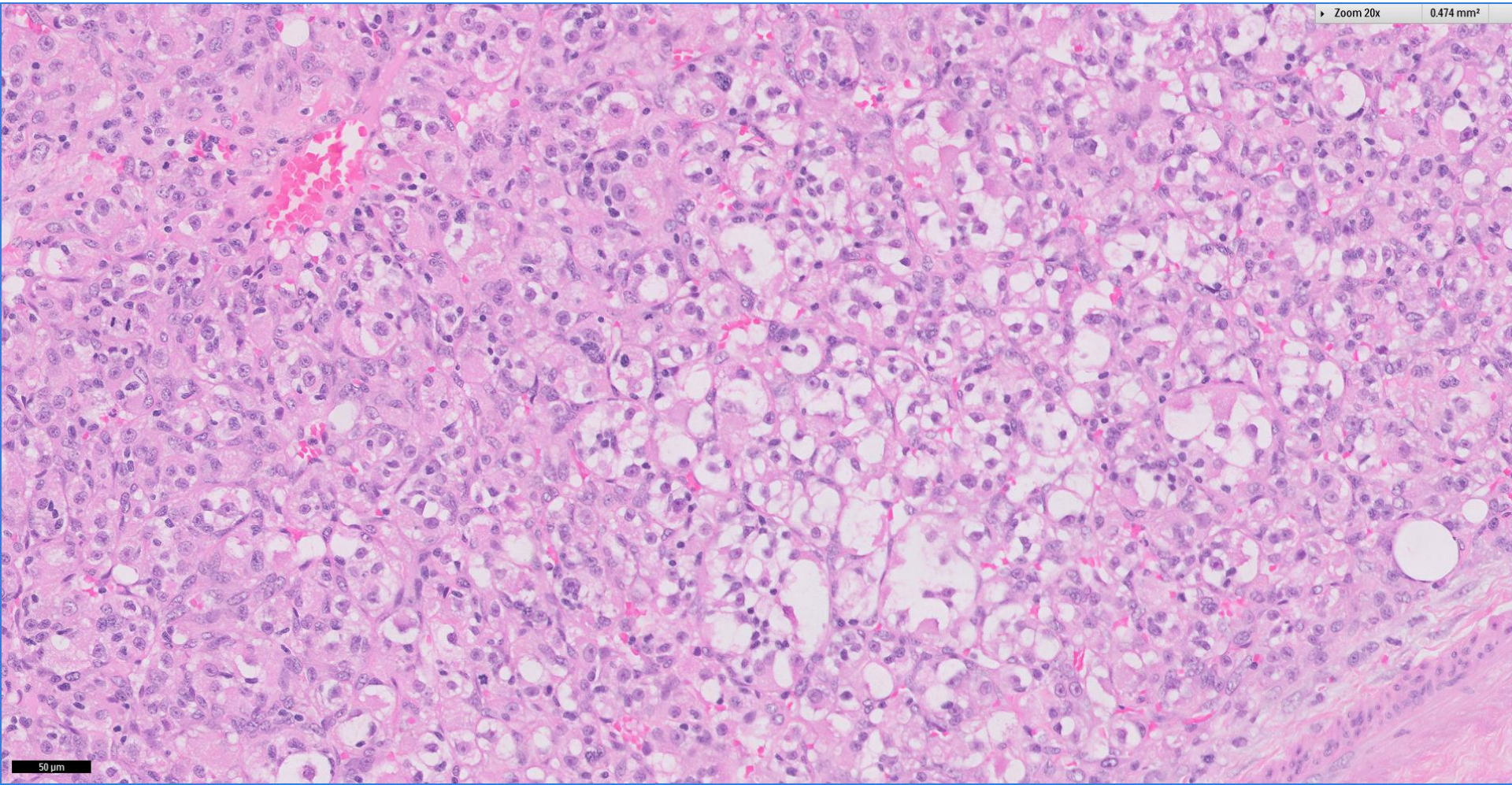
0.474 mm<sup>2</sup>



50 μm

Zoom 20x

0.474 mm<sup>2</sup>

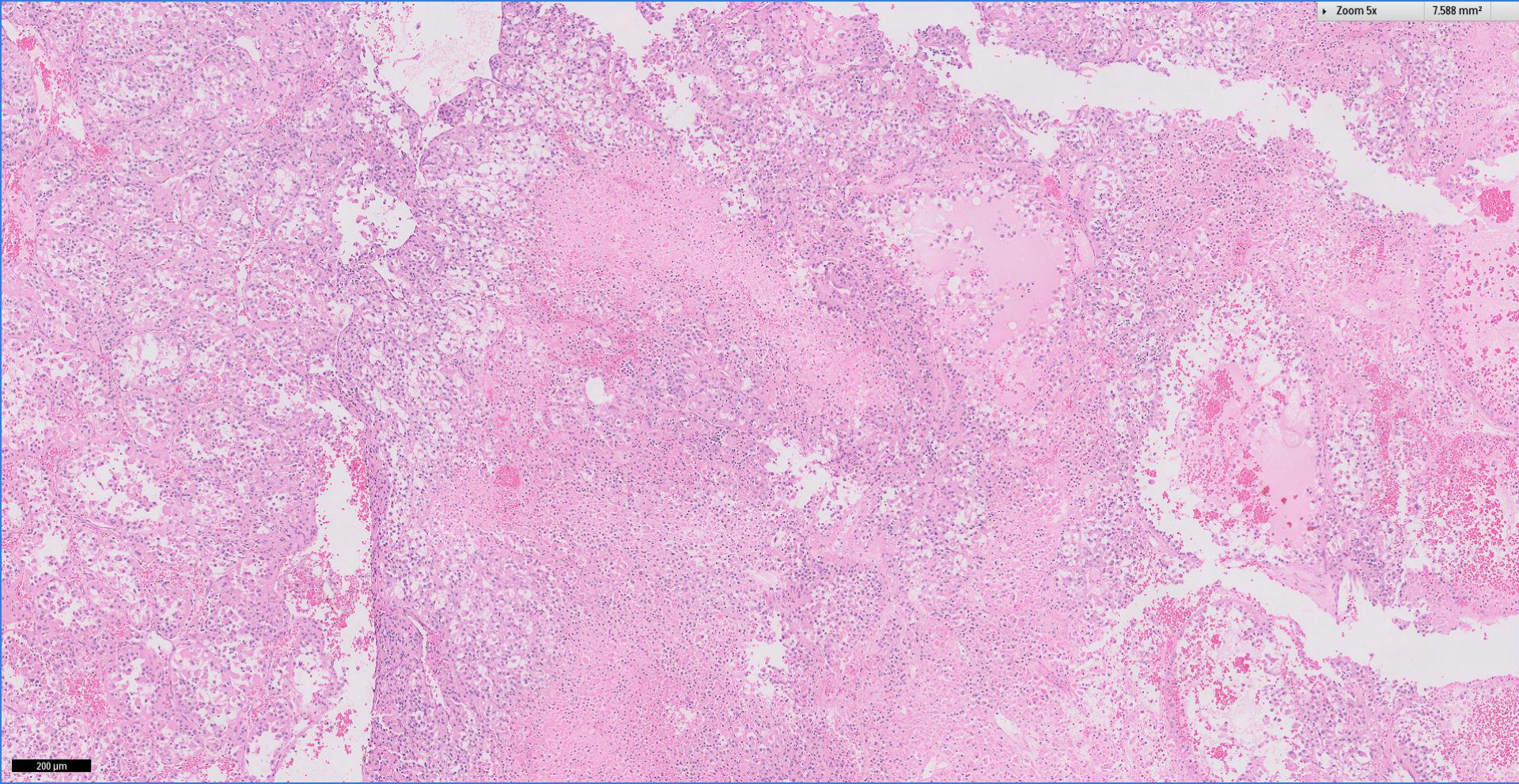


50 μm



Zoom 5x

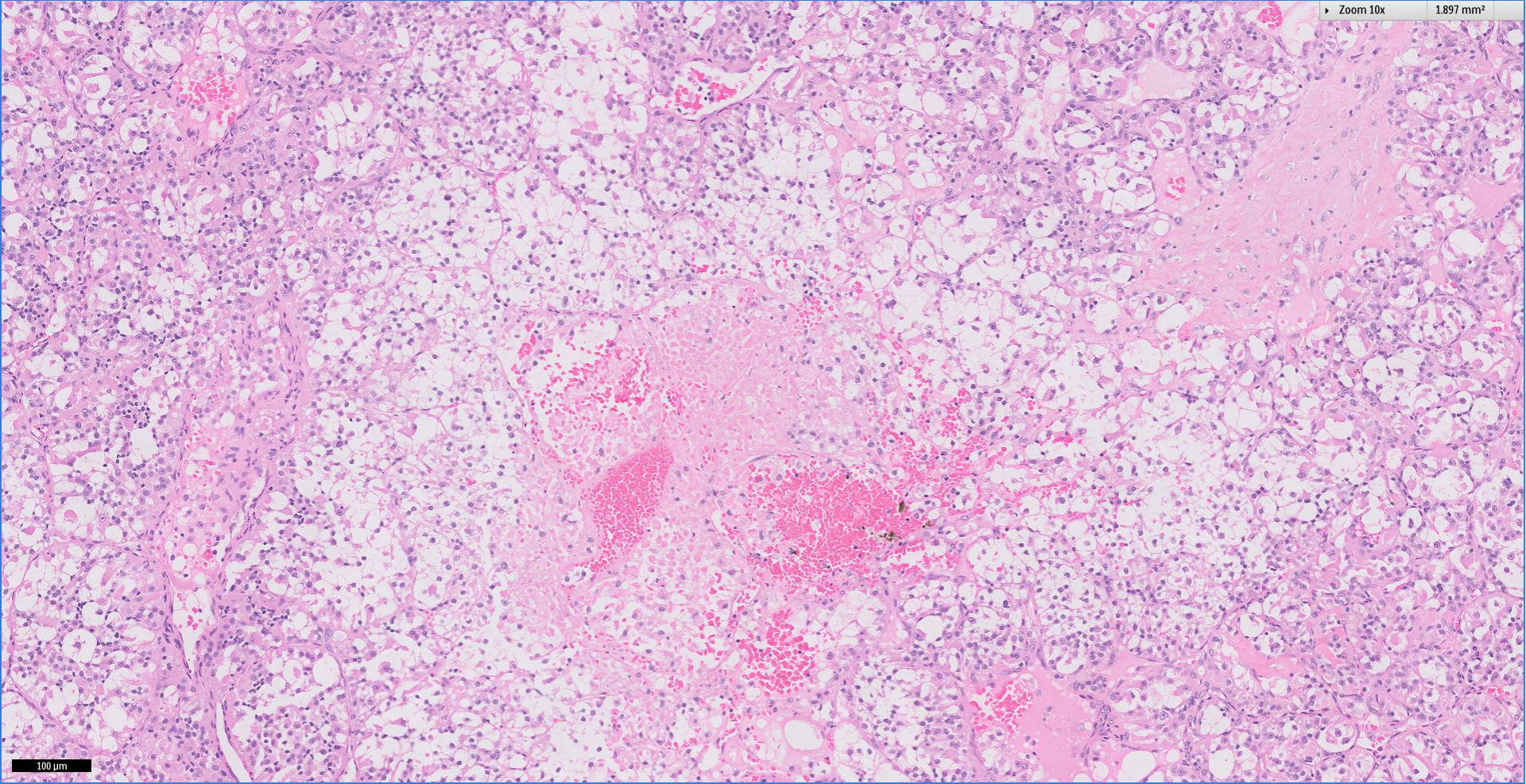
7.588 mm<sup>2</sup>



200  $\mu$ m

Zoom 10x

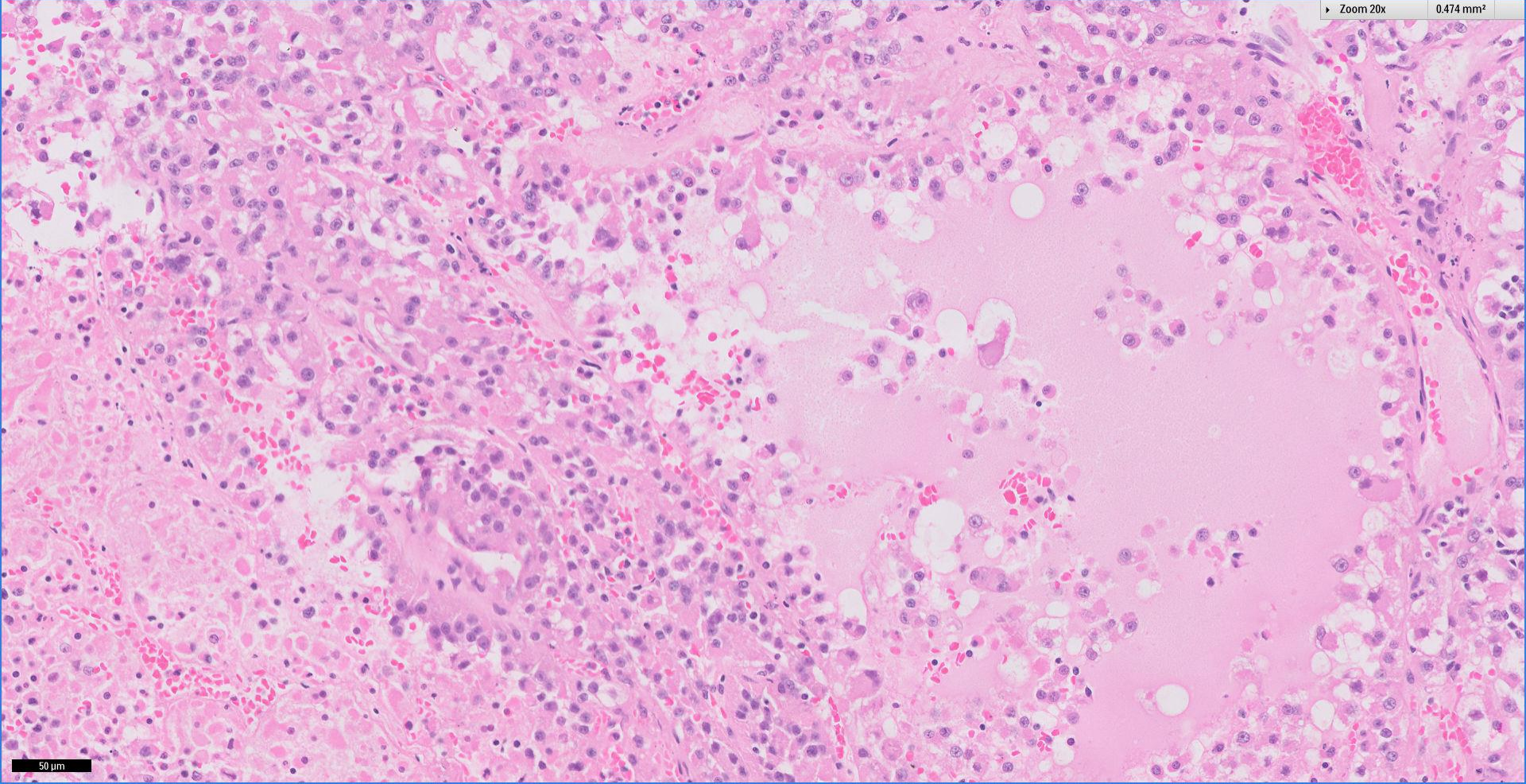
1.897 mm<sup>2</sup>



100 μm

Zoom 20x

0.474 mm<sup>2</sup>



50 μm

# Diagnosis

**Right breast lump, excision ~**

**Metastatic sarcoma, consistent with metastatic alveolar soft part sarcoma.**

*Previous history of alveolar soft part sarcoma of the thigh.*



Singapore  
General Hospital

SingHealth

Division of Pathology



SingHealth DukeNUS  
ACADEMIC MEDICAL CENTRE

PATHOLOGY

IAP

International Academy of Pathology  
Singapore Division

# Breast sarcoma

- Primary breast sarcoma is uncommon and encompasses a heterogeneous group of tumours, of which angiosarcoma is the most common.
- Differential diagnoses ~
  - Spindle cell metaplastic carcinoma.
  - Malignant phyllodes tumour.
  - Metastatic sarcoma
    - Clinical correlation and radiological workup are needed.



Singapore  
General Hospital

SingHealth

Division of Pathology



SingHealth DukeNUS  
ACADEMIC MEDICAL CENTRE

PATHOLOGY

The logo for the International Academy of Pathology, Singapore Division, featuring the letters 'IAP' in a bold, black, sans-serif font.

International Academy of Pathology  
Singapore Division

# References

- 1: Hanna NN, O'Donnell K, Wolfe GR. Alveolar soft part sarcoma metastatic to the breast. J Surg Oncol. 1996 Feb;61(2):159-62.
- 2: Wu J, Brinker DA, Haas M, Montgomery EA, Argani P. Primary alveolar soft part sarcoma (ASPS) of the breast: report of a deceptive case with xanthomatous features confirmed by TFE3 immunohistochemistry and electron microscopy. Int J Surg Pathol. 2005 Jan;13(1):81-5.
- 3: Lim HS, Heo SH, Park JG, Kang HK. Metastatic alveolar soft part sarcoma of the breast. J Ultrasound Med. 2006 Jul;25(7):929-32
- 4: Madrigrano A, Beach B, Wheeler A, Wapnir I. Metastases to the breast: alveolar soft part sarcoma in adolescents. Clin Breast Cancer. 2008 Feb;8(1):92-3.
- 5: Orphanos G, Ioannidis G, Ioannou R, Zouvani I. Alveolar soft part sarcoma with breast metastases: a case report. Med Oncol. 2013 Mar;30(1):342
- 6: Bychkov A, Sampatanukul P. Alveolar soft part sarcoma presenting as a breast metastasis in a patient with a history of thyroid cancer: a case report. Int J Clin Exp Pathol. 2015 Aug 1;8(8):9731-6.



Singapore  
General Hospital

SingHealth

Division of Pathology



SingHealth DukeNUS  
ACADEMIC MEDICAL CENTRE

PATHOLOGY



IAP

International Academy of Pathology  
Singapore Division

 Breast  
Pathology  
Course 2017

