

Case 15

69 year old Chinese female.

Right breast hookwire localisation excision biopsy.



Singapore
General Hospital

SingHealth

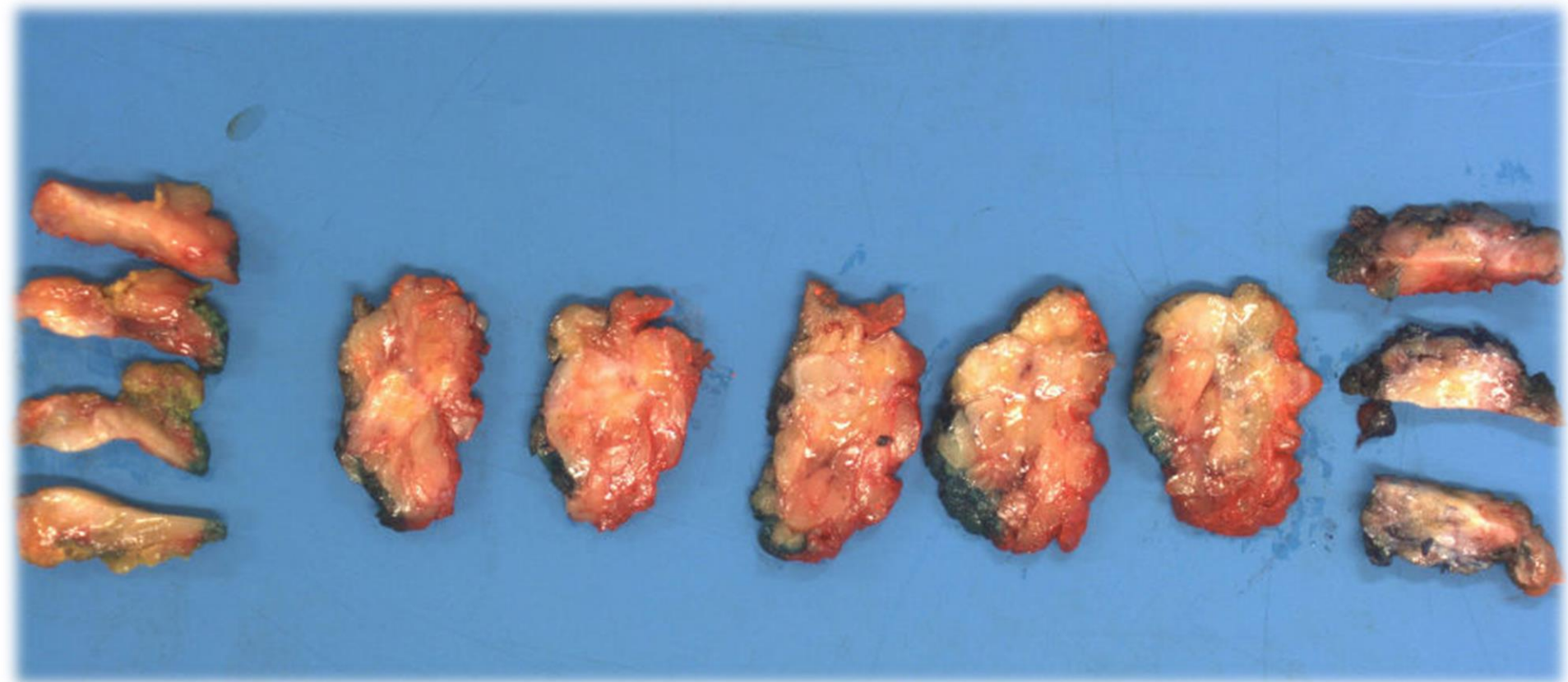
Division of Pathology

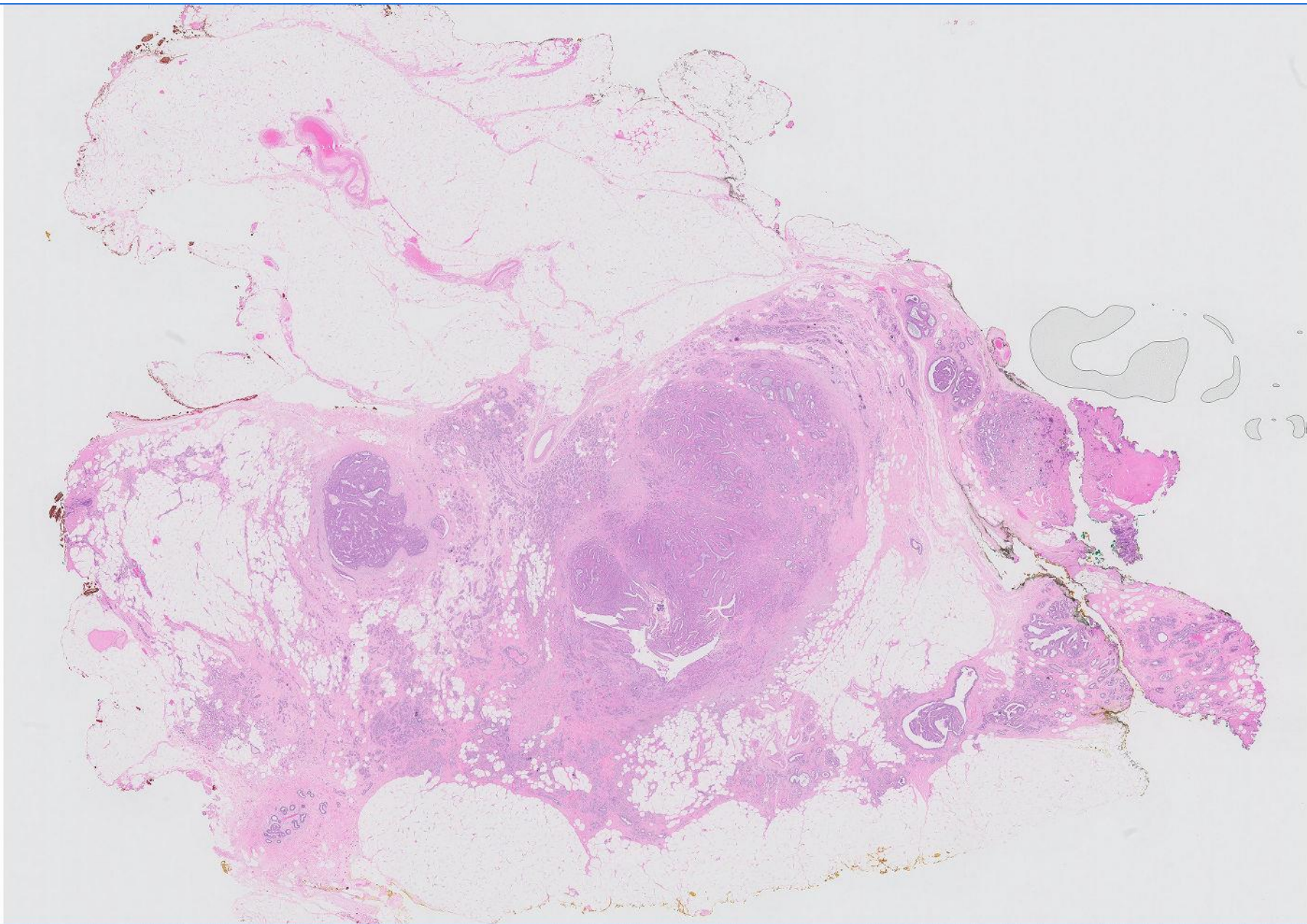


PATHOLOGY

IAP

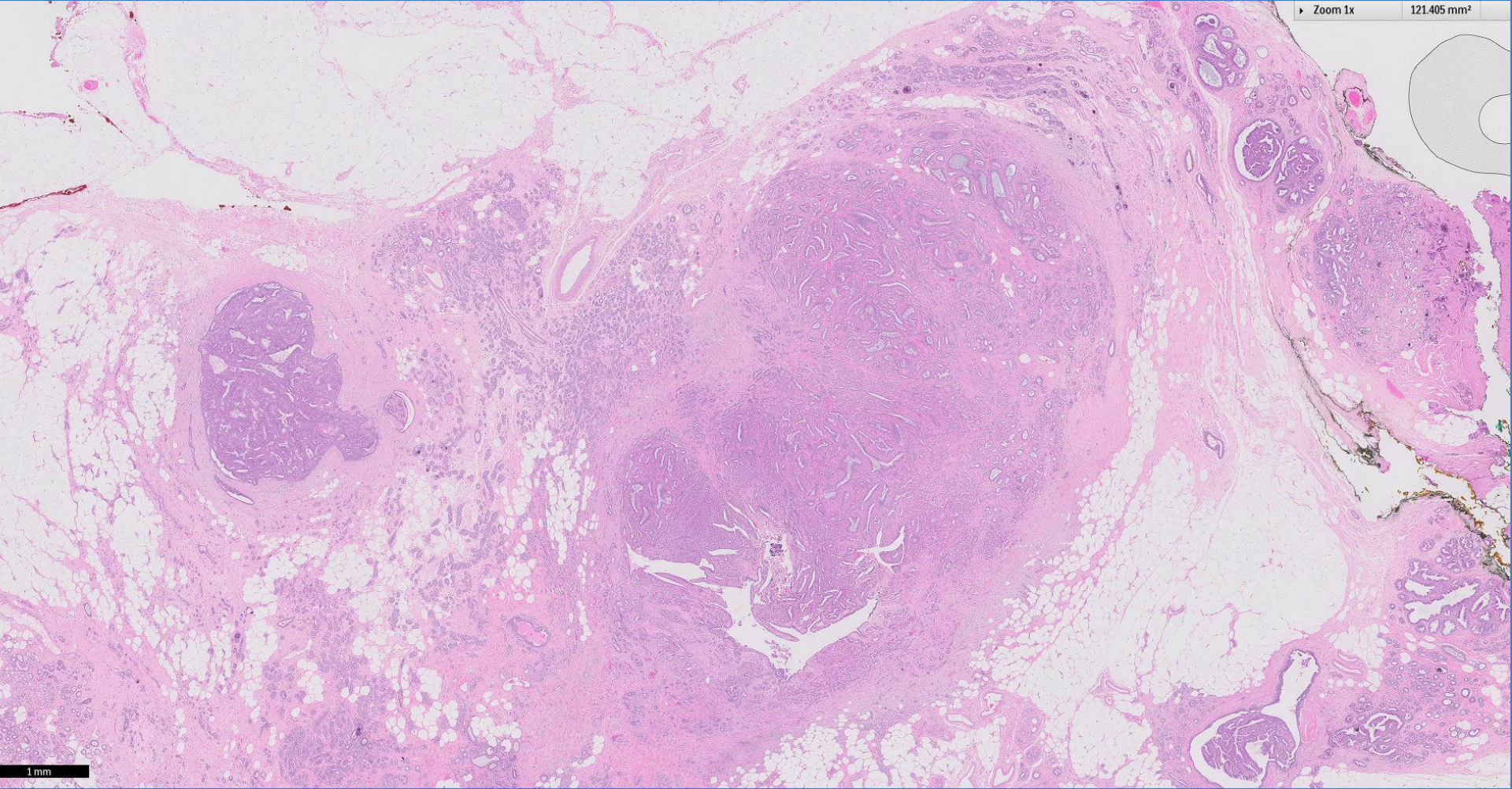
International Academy of Pathology
Singapore Division





Zoom 1x

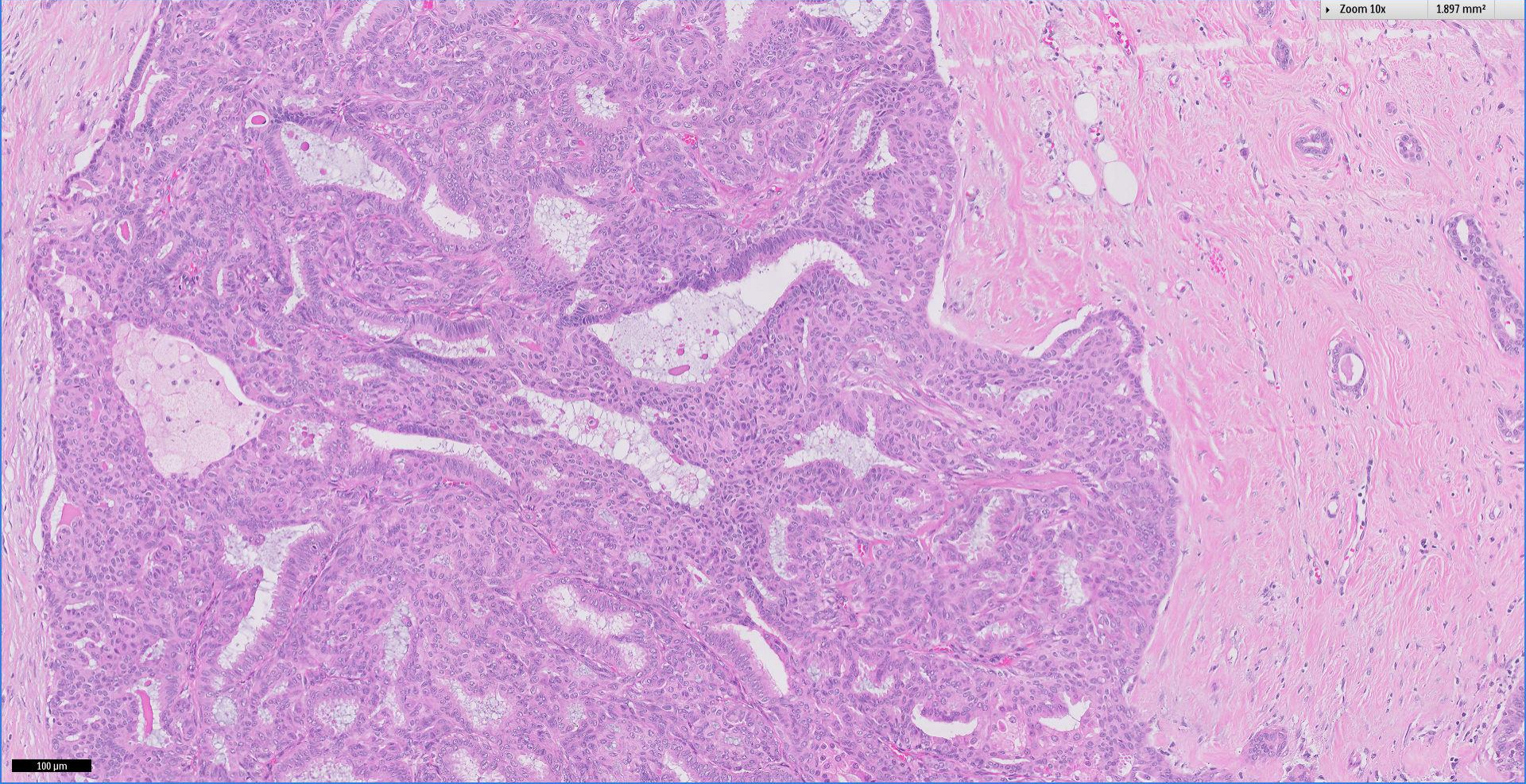
121.405 mm²



1 mm

Zoom 10x

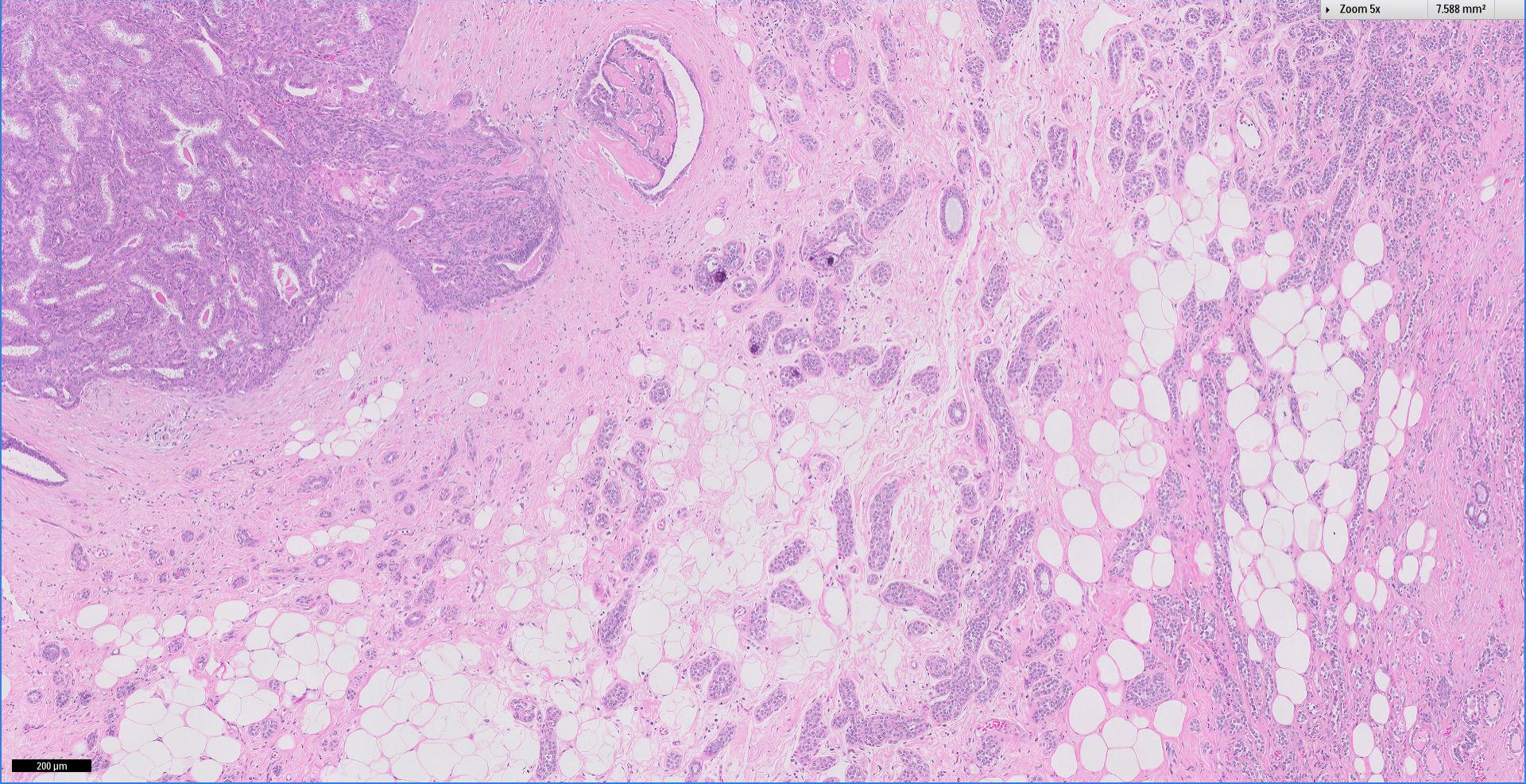
1.897 mm²



100 μm

Zoom 5x

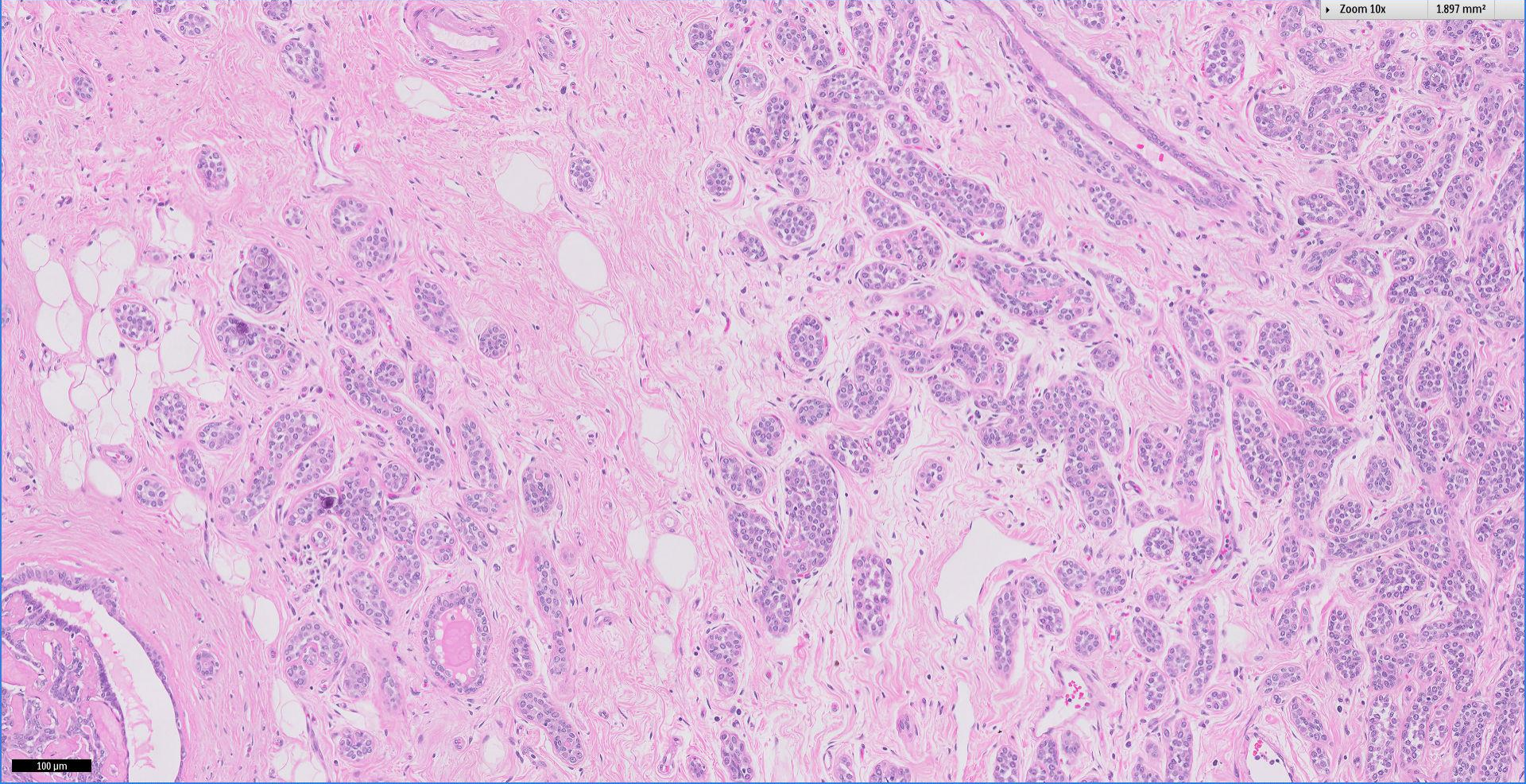
7.588 mm²



200 μ m

Zoom 10x

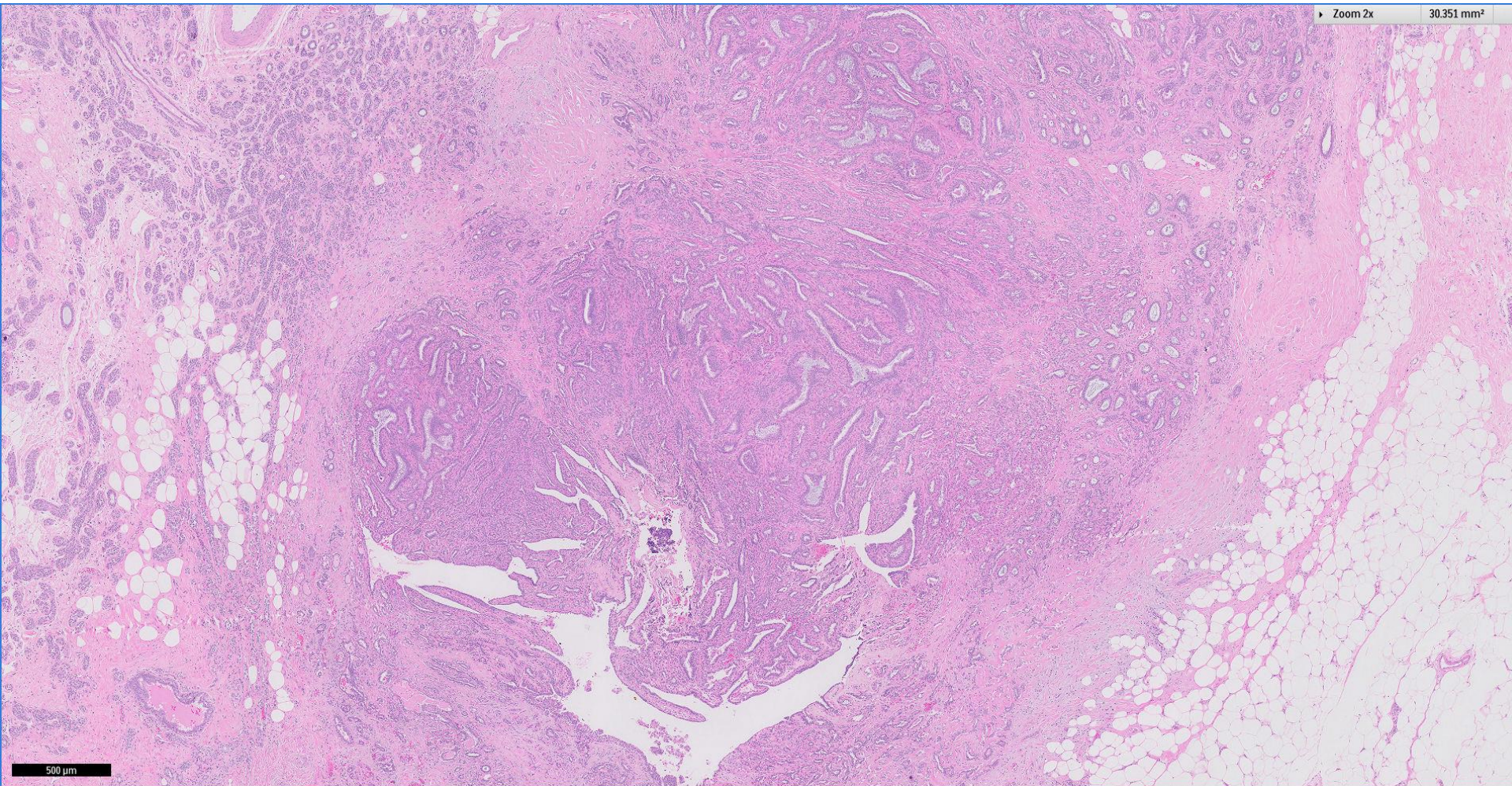
1.897 mm²



100 μm

Zoom 2x

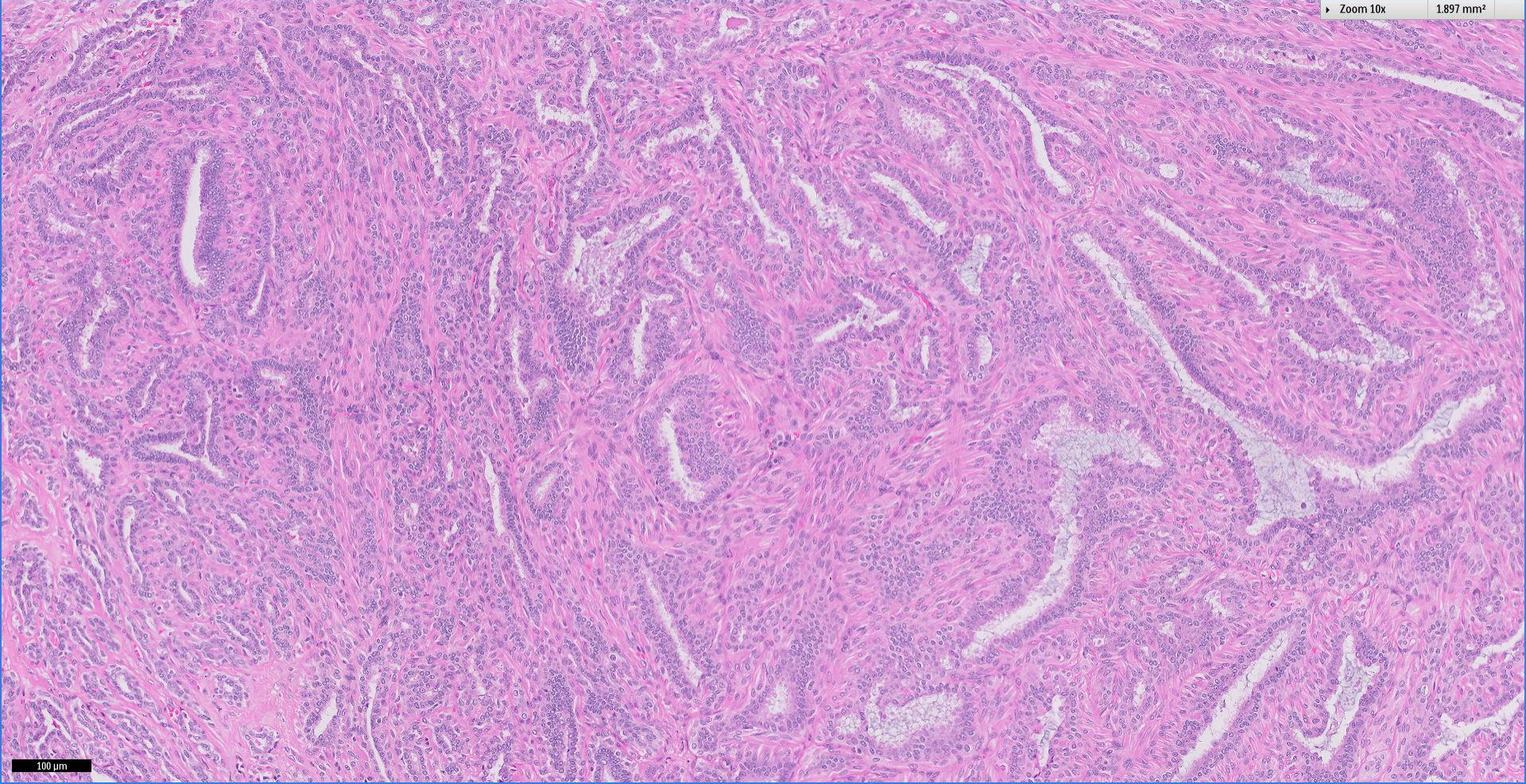
30.351 mm²



500 μ m

Zoom 10x

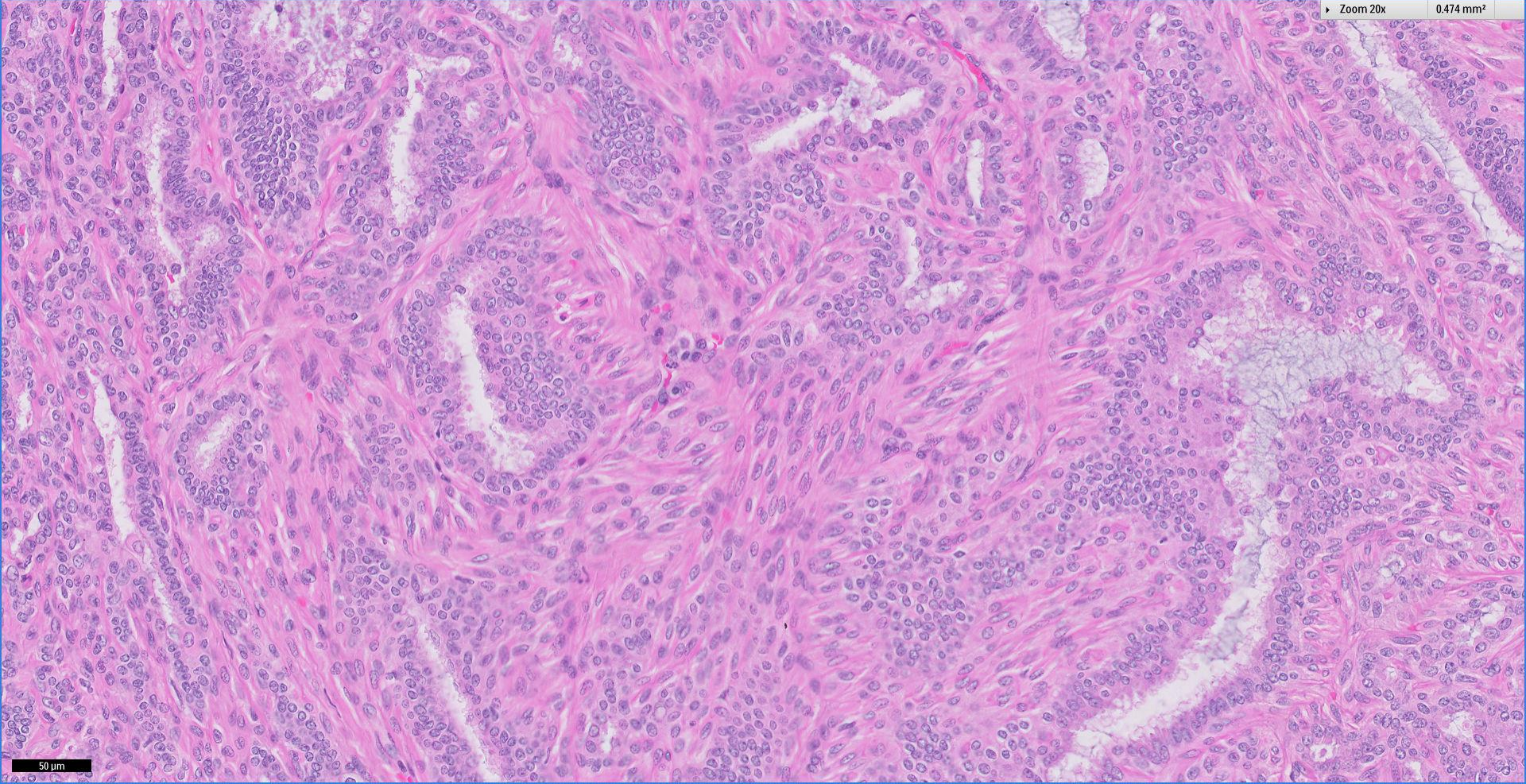
1.897 mm²



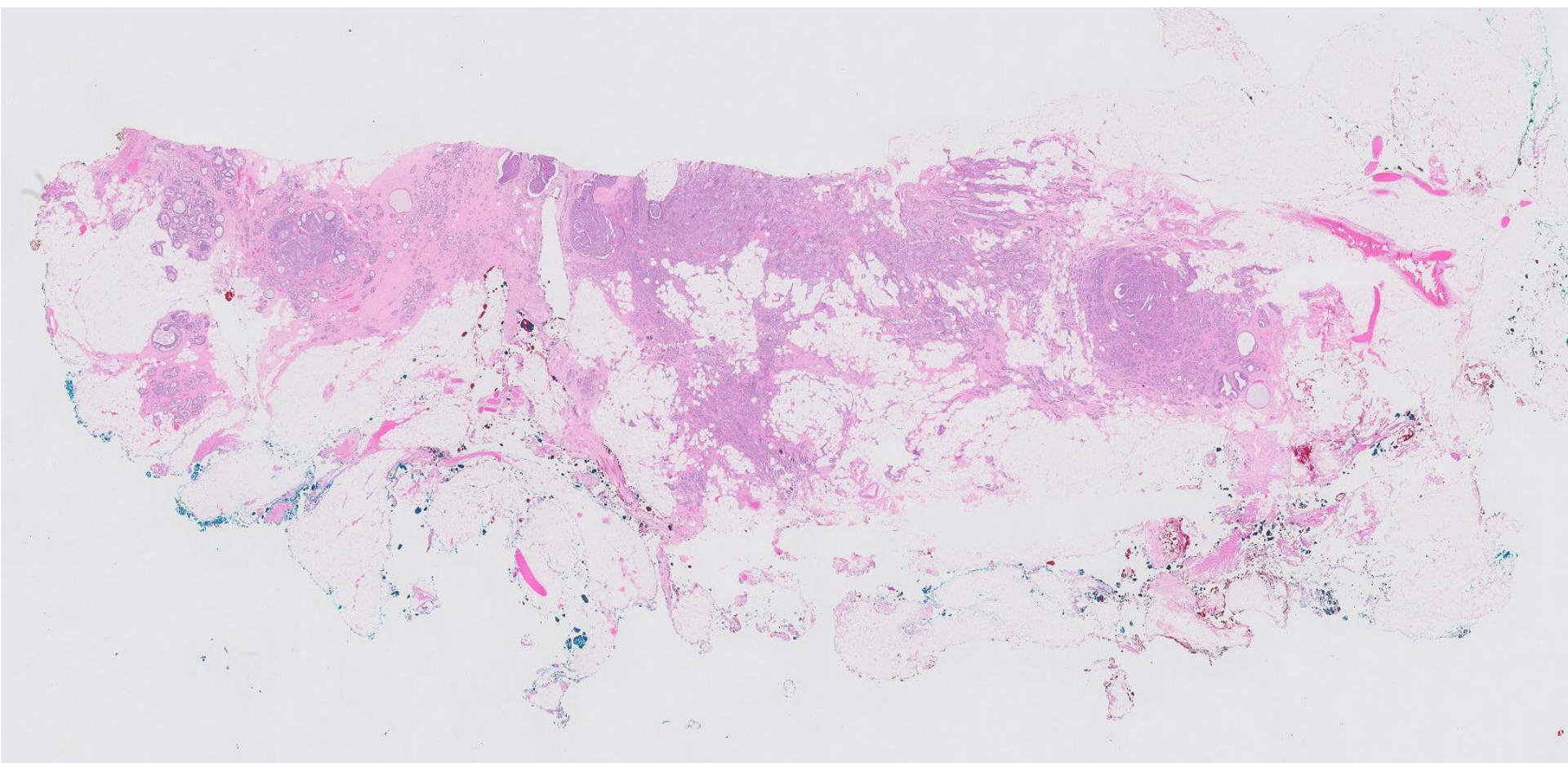
100 μm

Zoom 20x

0.474 mm²

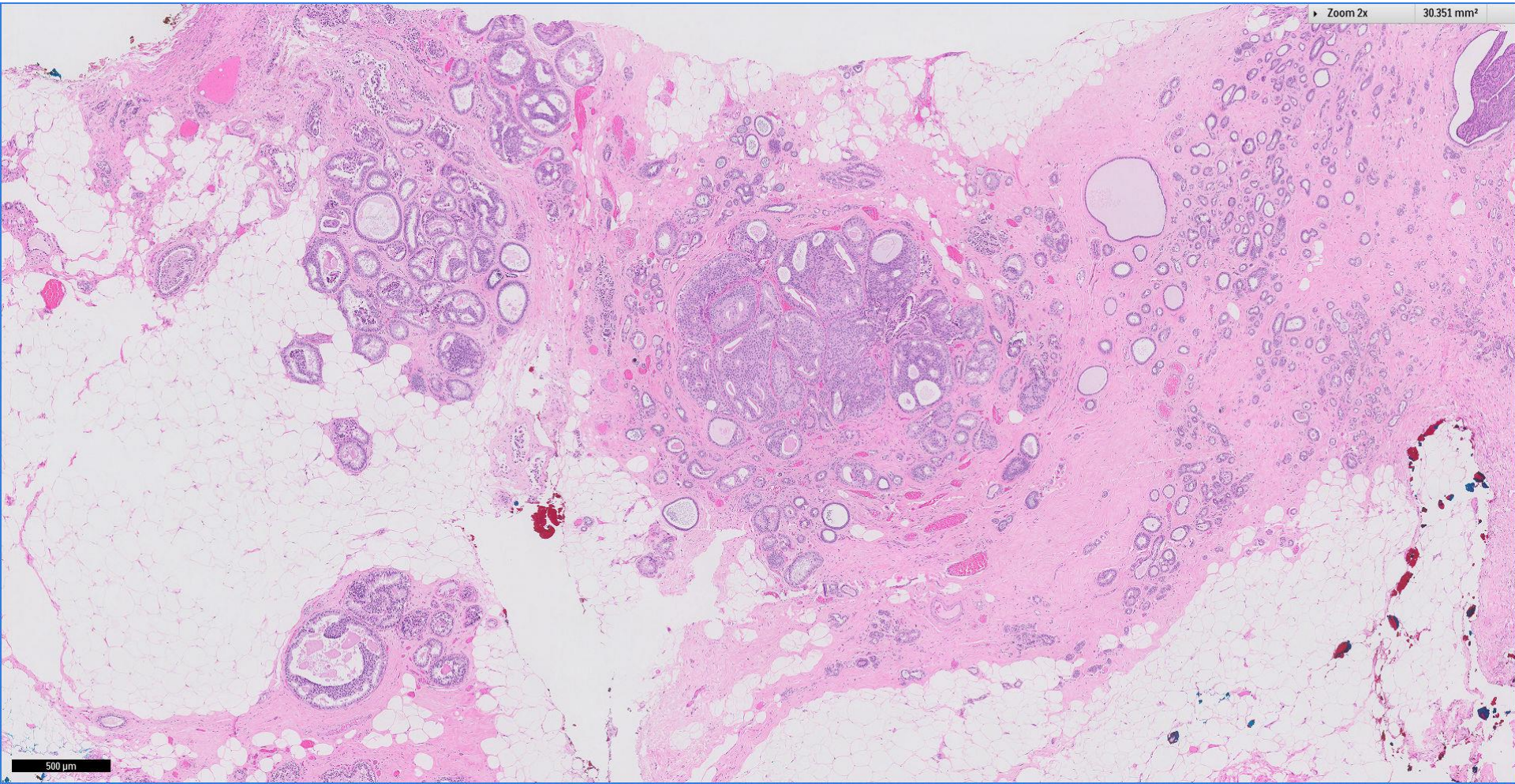


50 μm

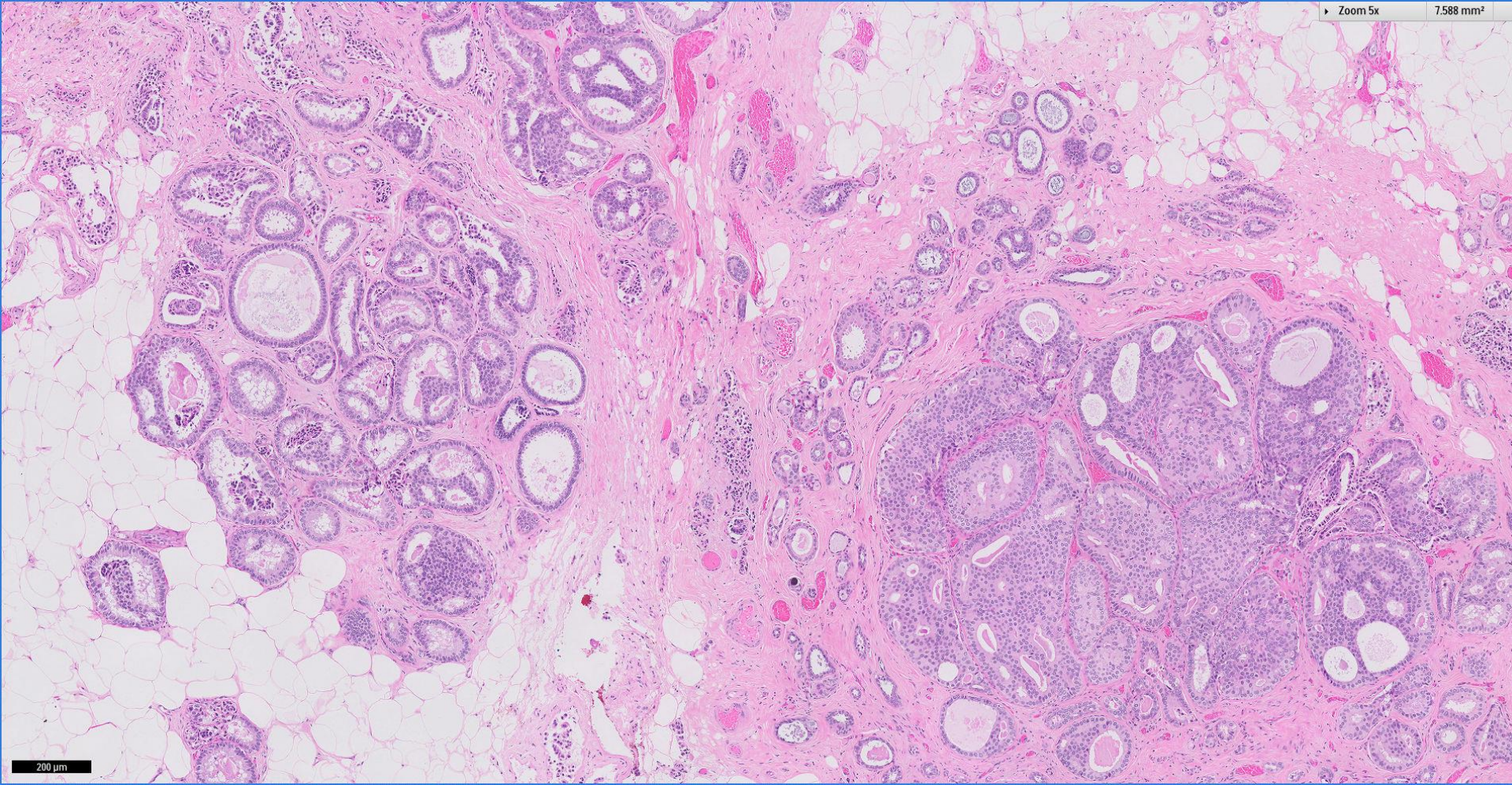


Zoom 2x

30.351 mm²

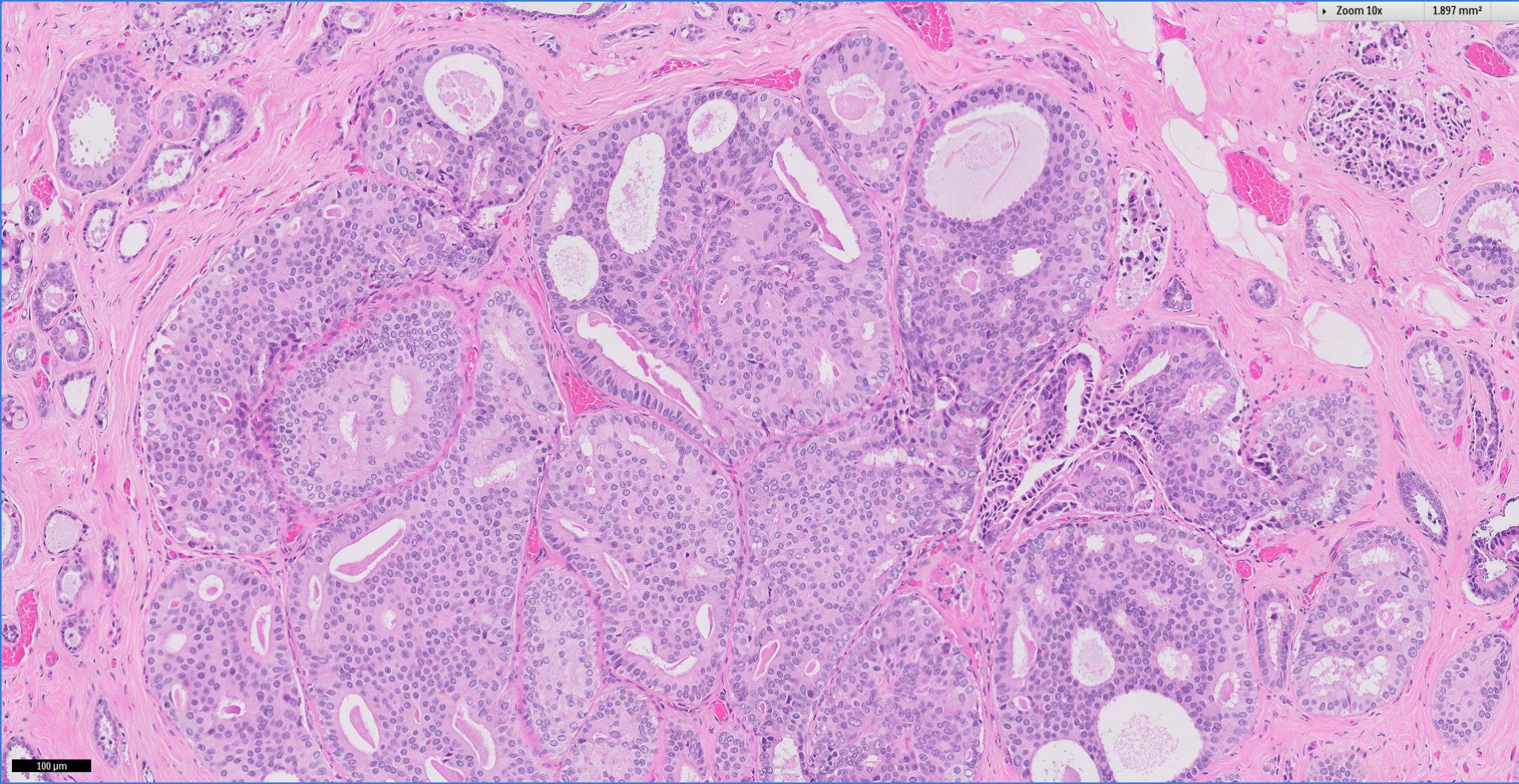


500 μ m



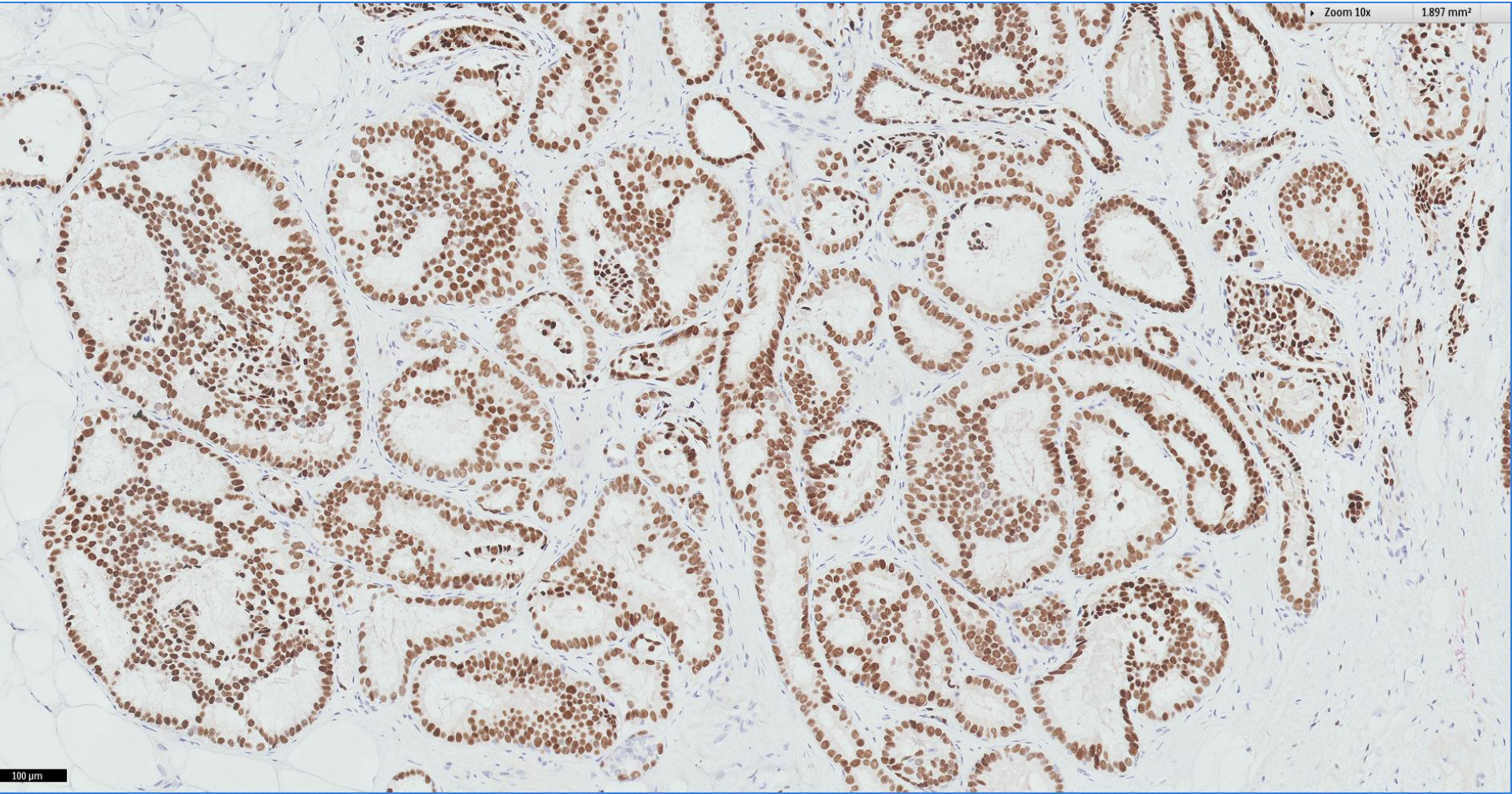
Zoom 10x

1.897 mm²

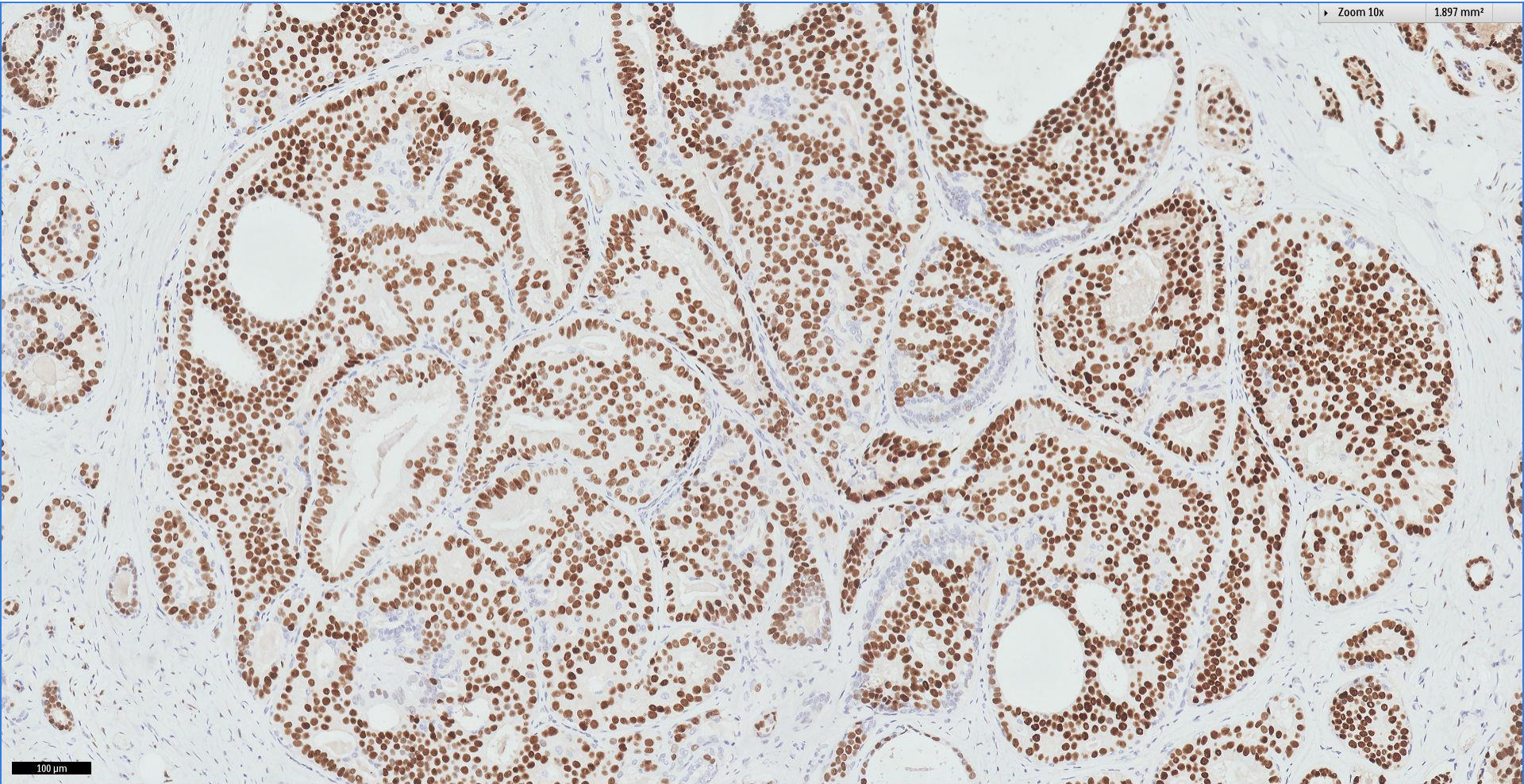


100 μ m

ER

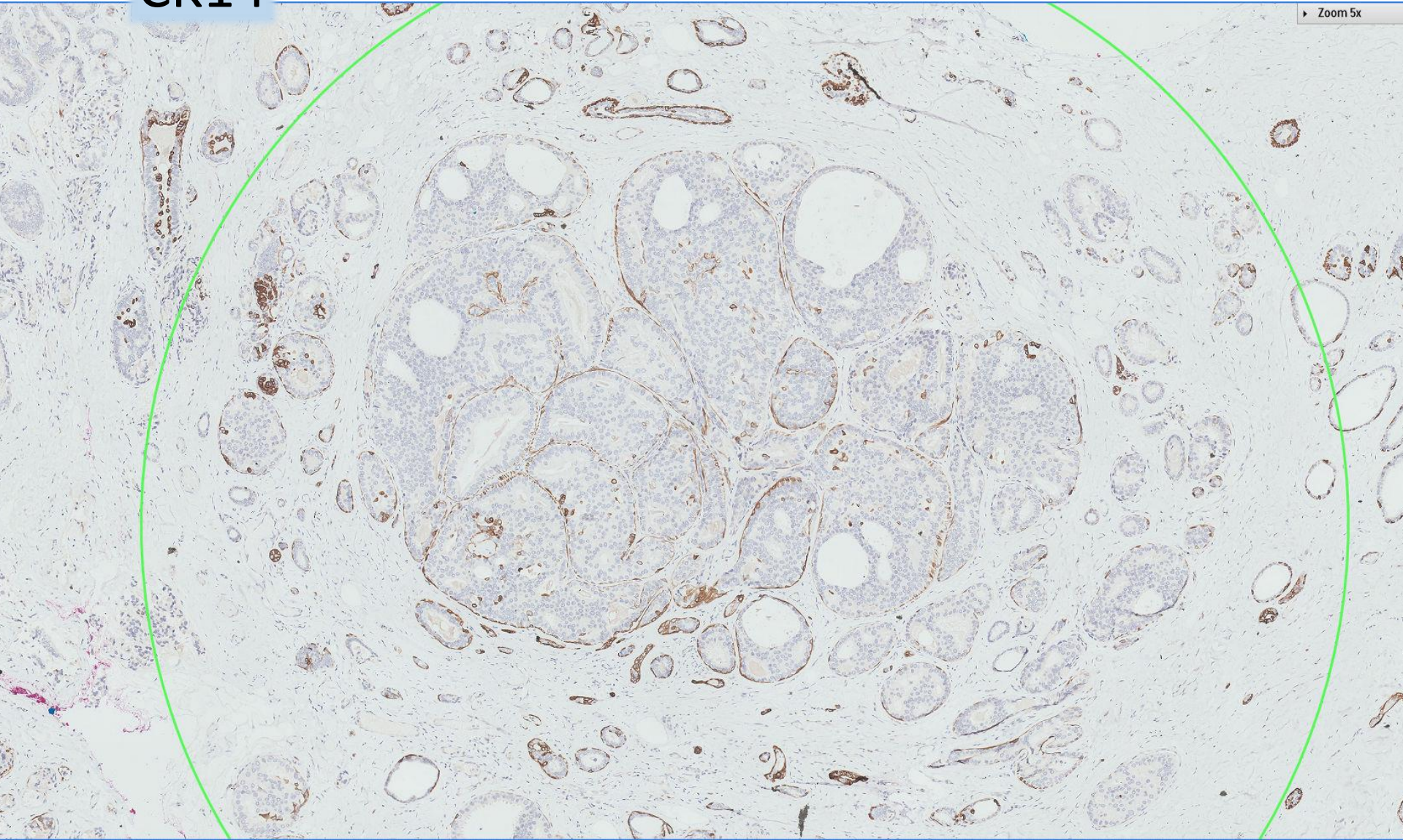


ER

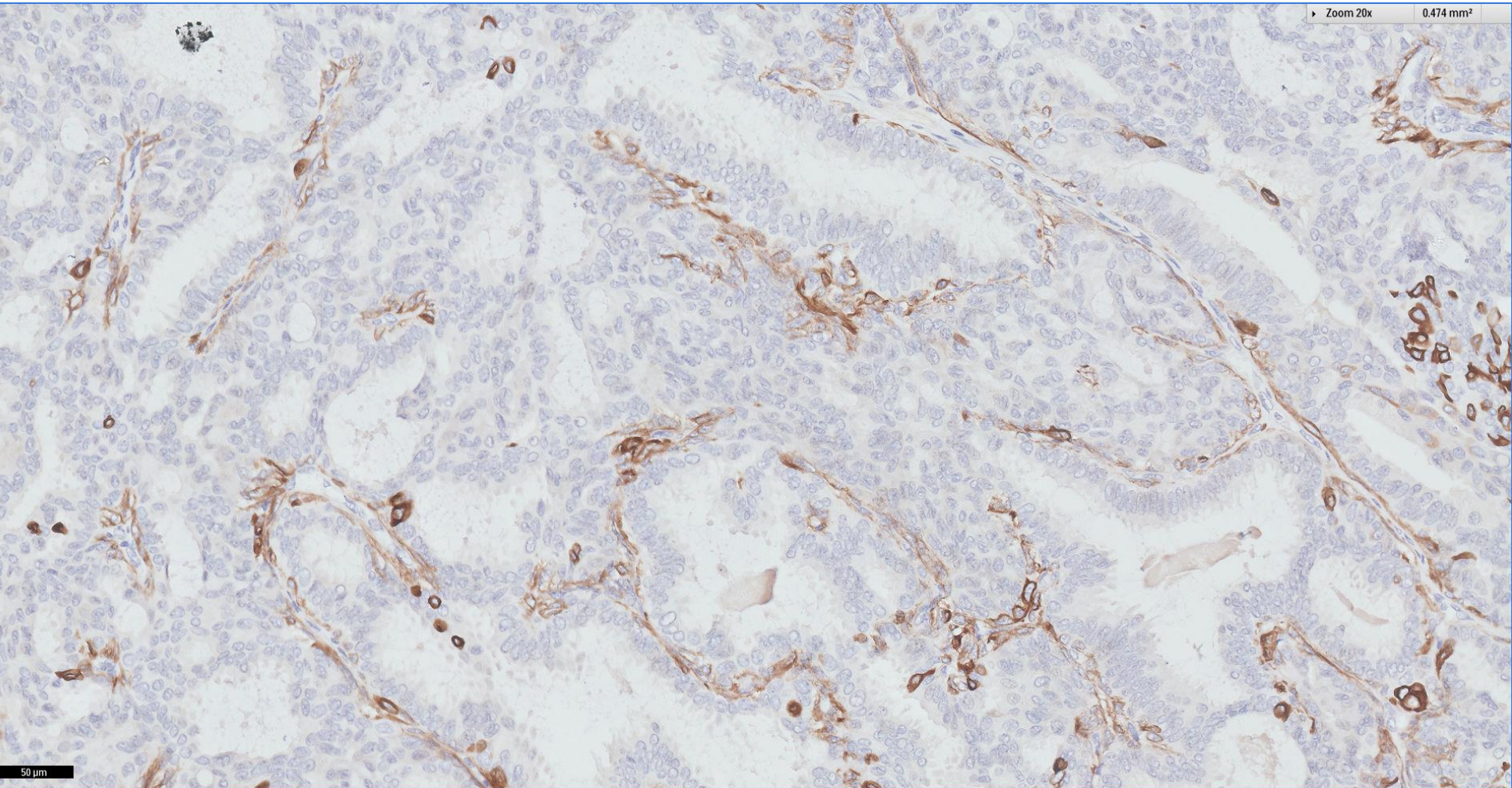


CK14

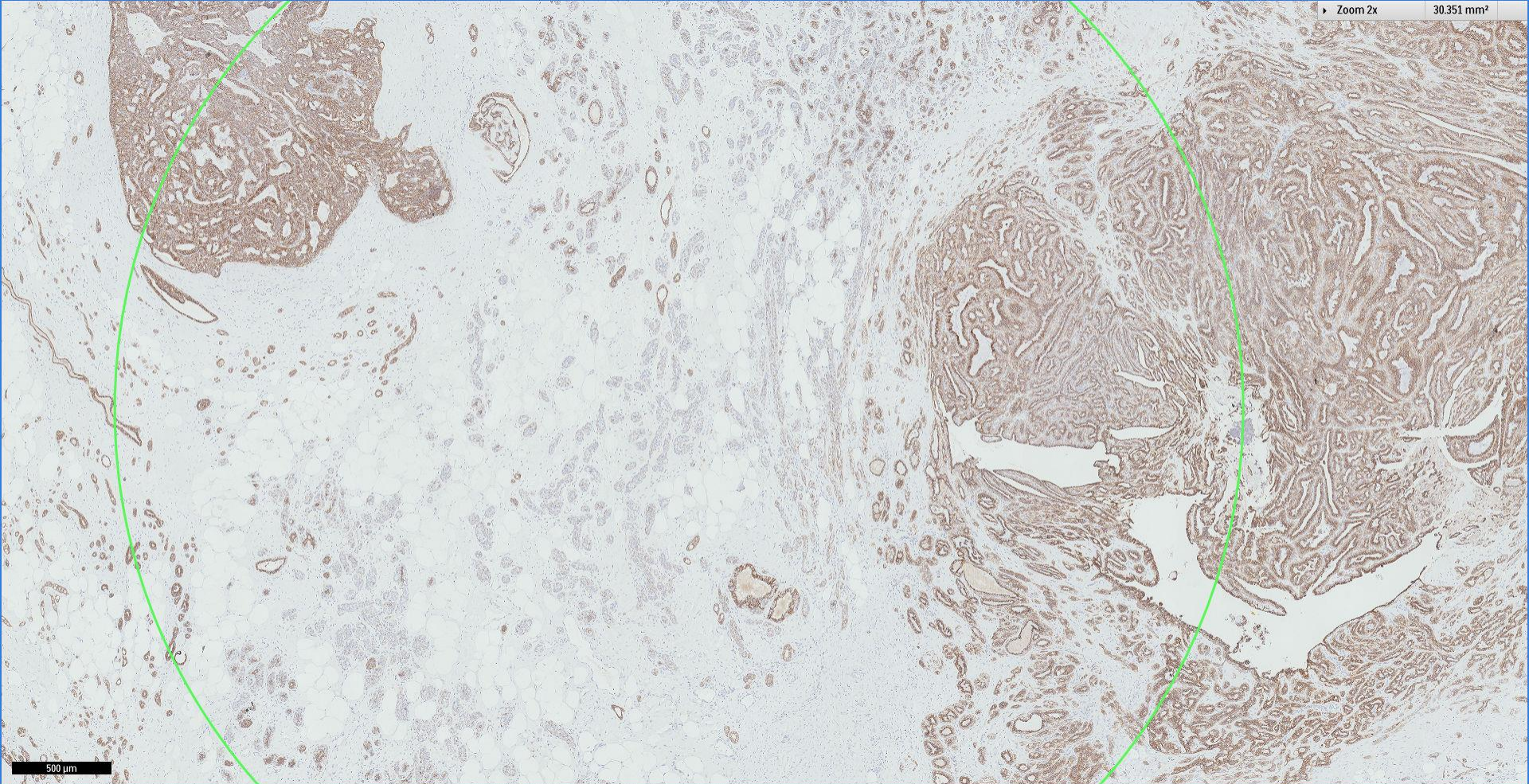
Zoom 5x



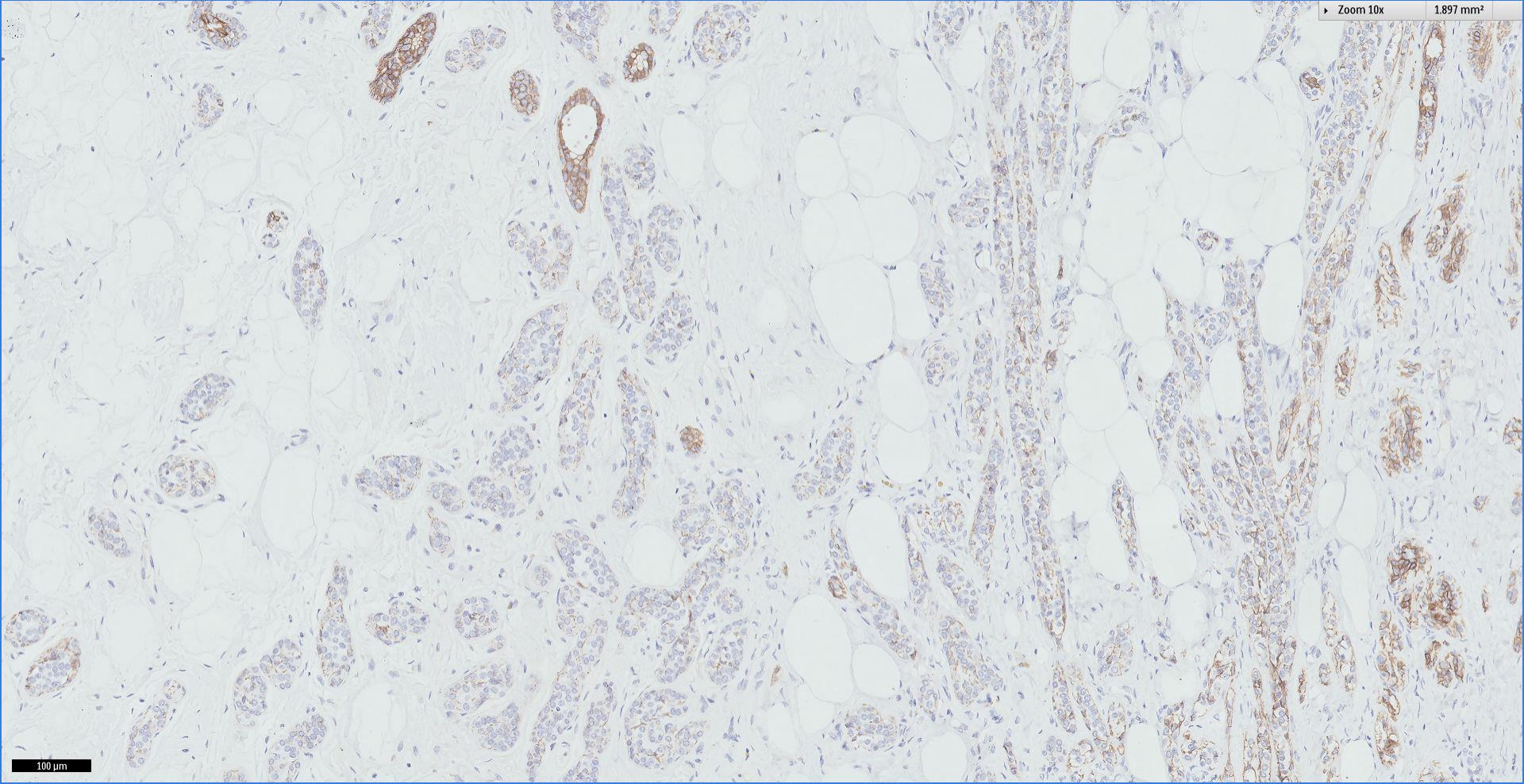
CK14



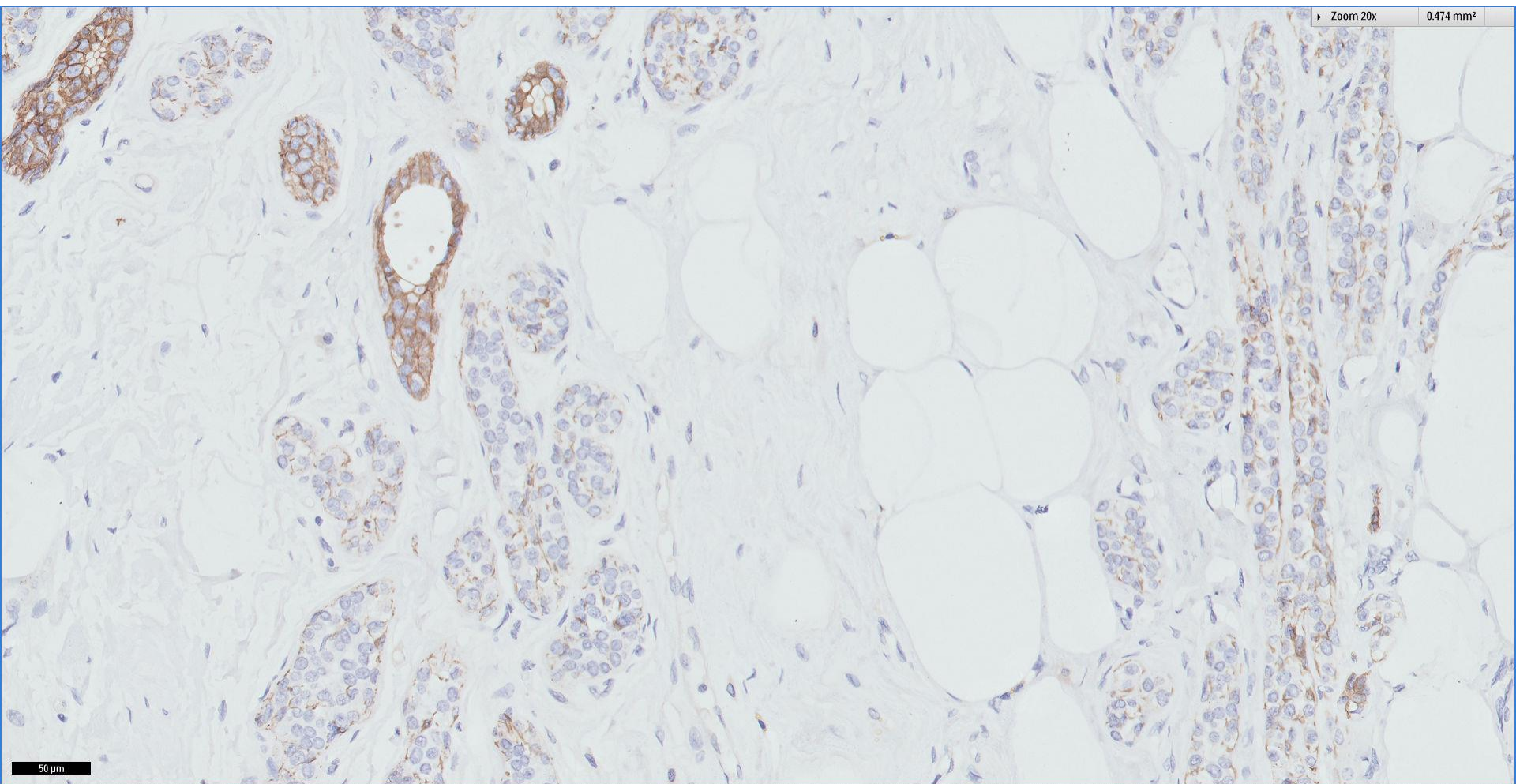
E-cadherin



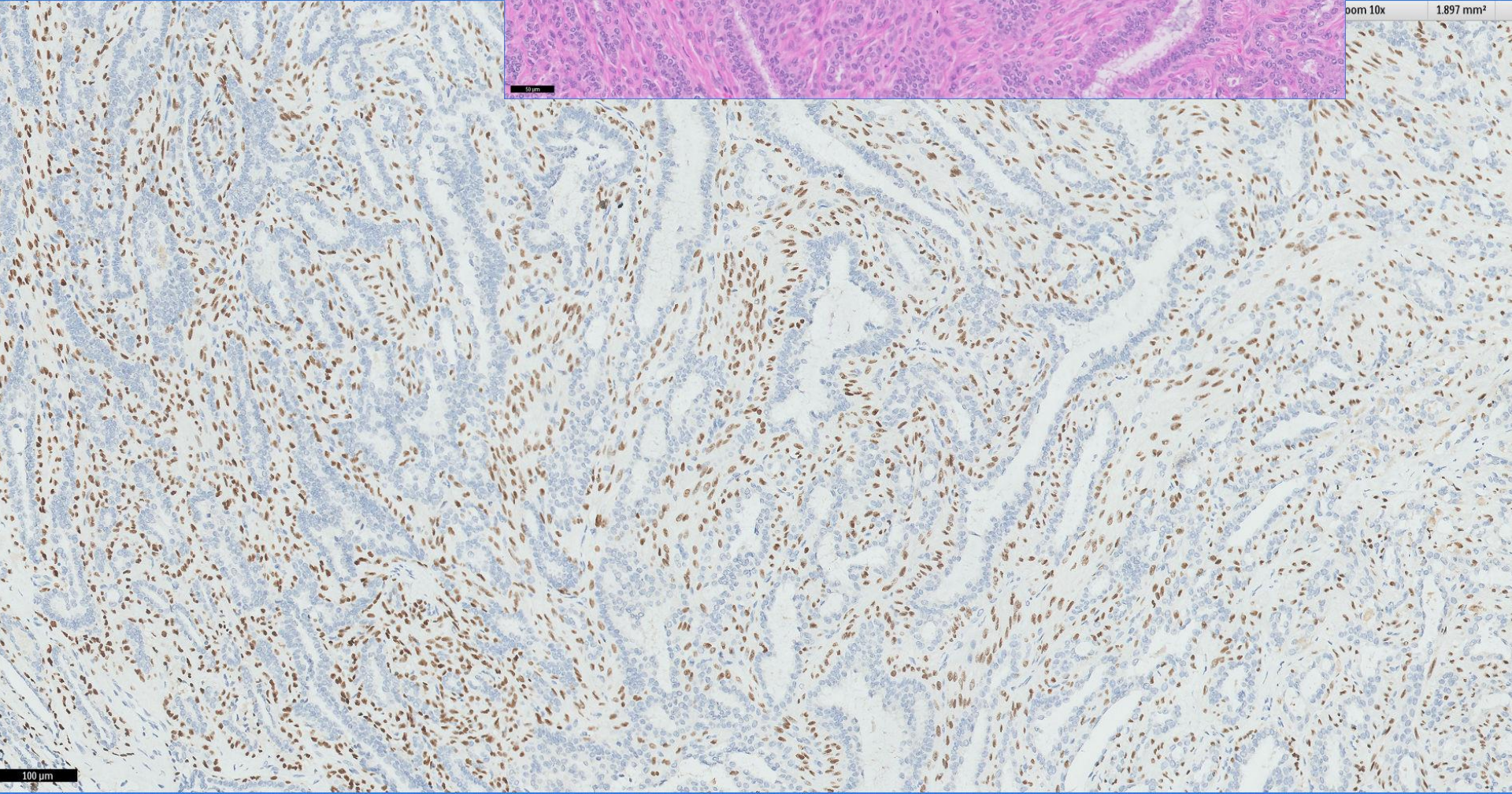
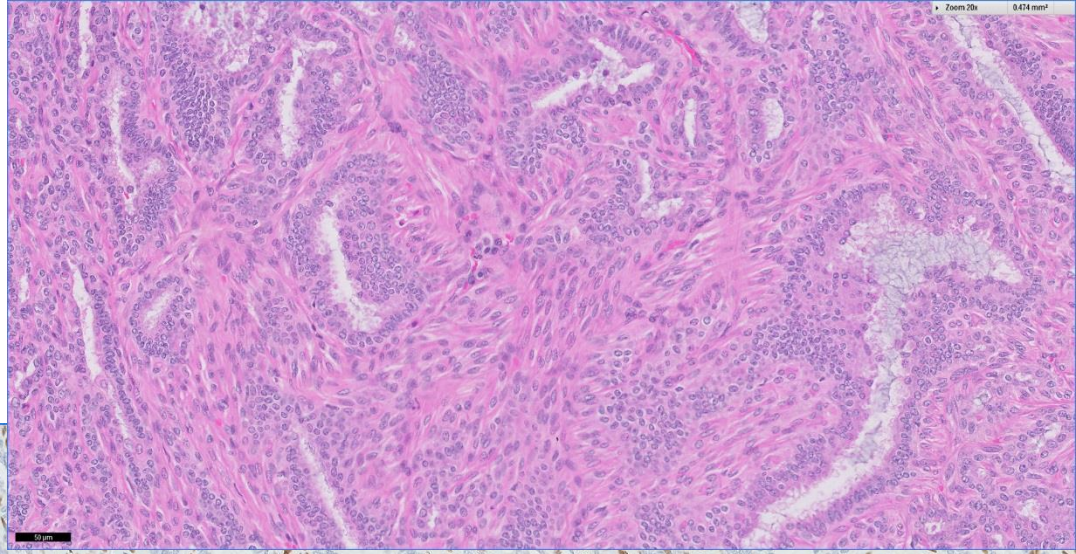
E-cadherin



E-cadherin



p63



Diagnosis:

Right breast, hookwire localization excision biopsy ~

Ductal carcinoma in situ, low nuclear grade, without necrosis, 9mm.

Atypical lobular hyperplasia.

Sclerosed intraductal papillomas.

Calcifications present.



Singapore
General Hospital

SingHealth

Division of Pathology



SingHealth DukeNUS
ACADEMIC MEDICAL CENTRE

PATHOLOGY



IAP

International Academy of Pathology
Singapore Division

 Breast
Pathology
Course 2017

