

Case 11

57 year old Chinese female
Left breast lump, excision biopsy.



Singapore
General Hospital

SingHealth

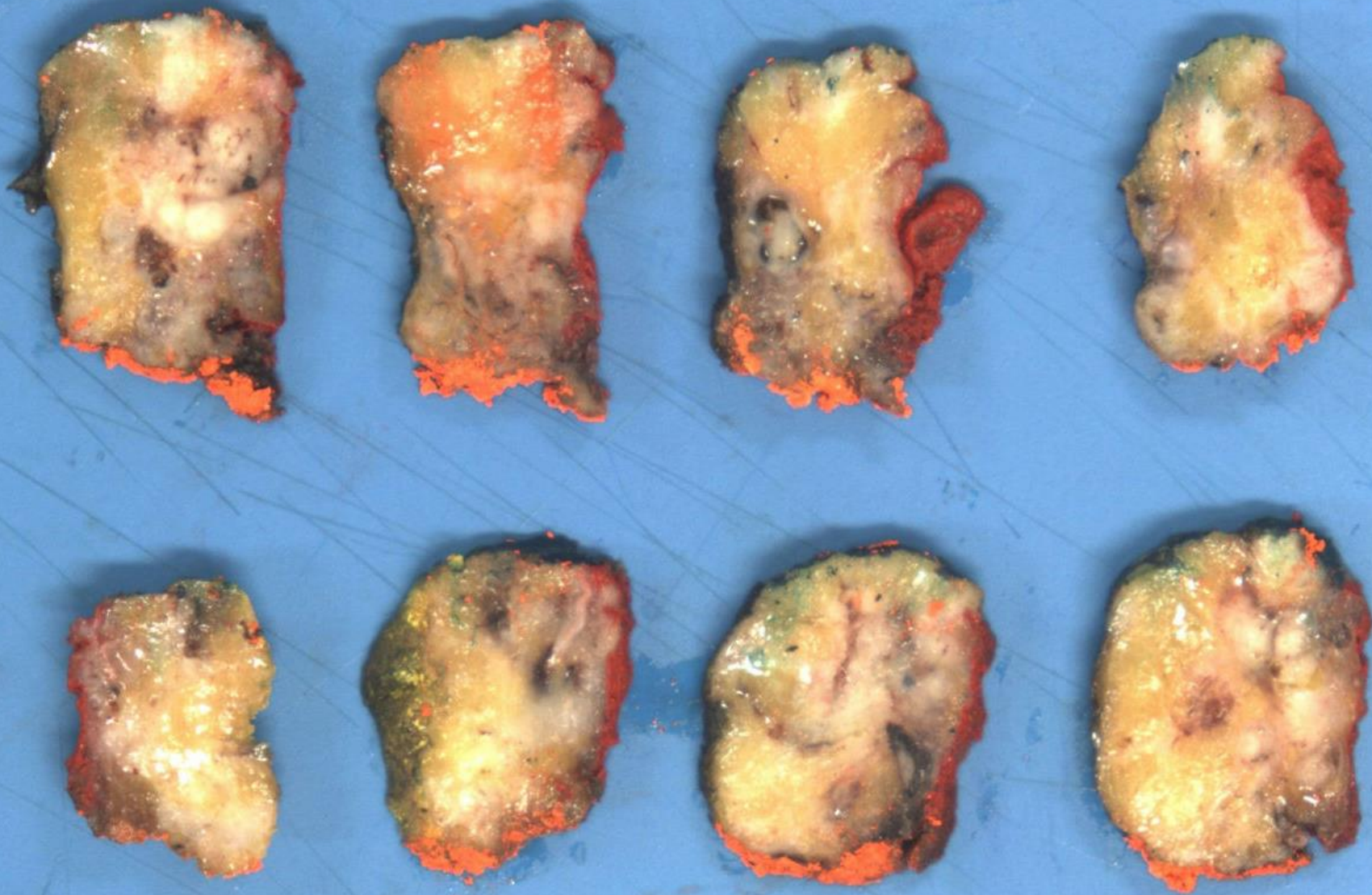
Division of Pathology



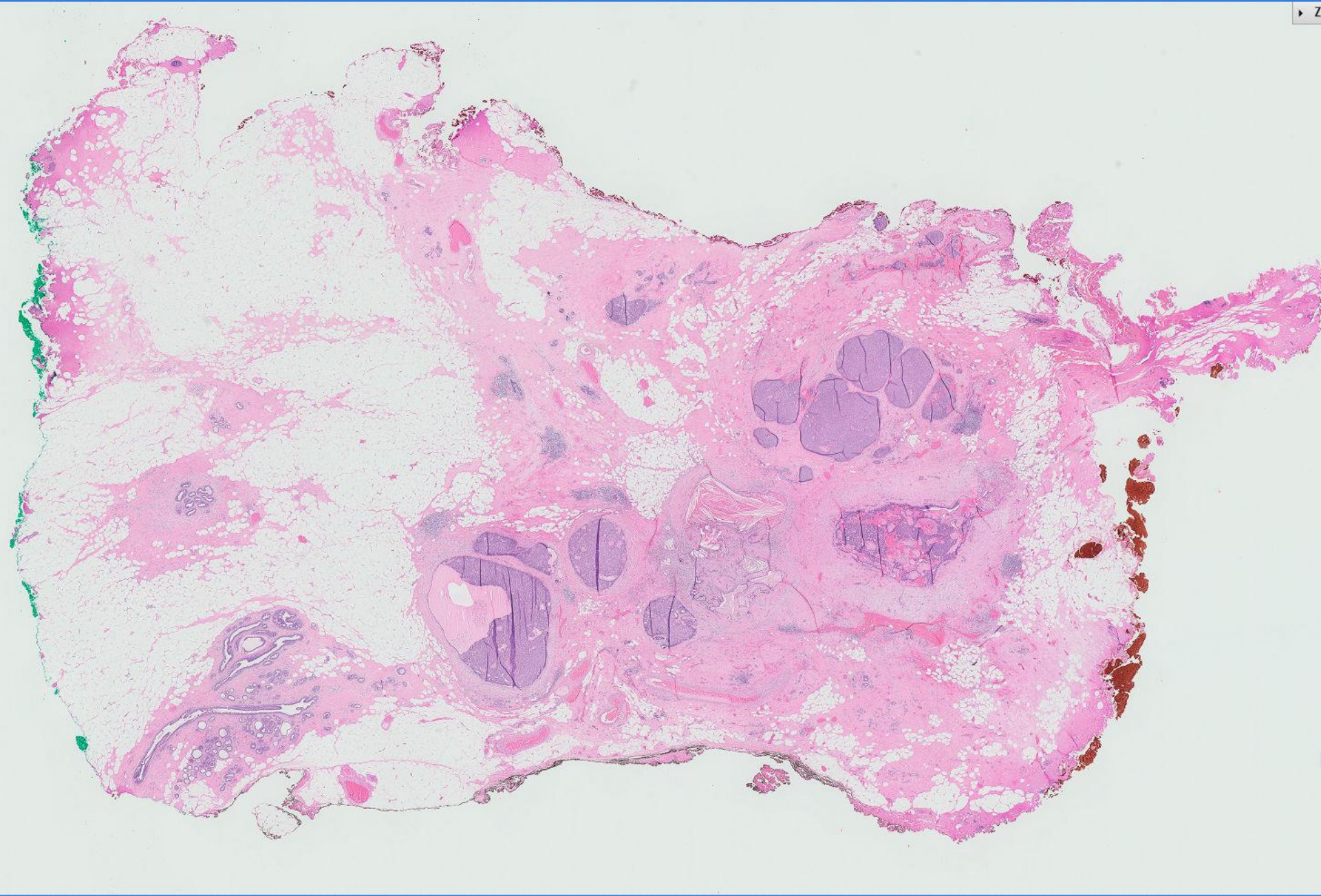
PATHOLOGY

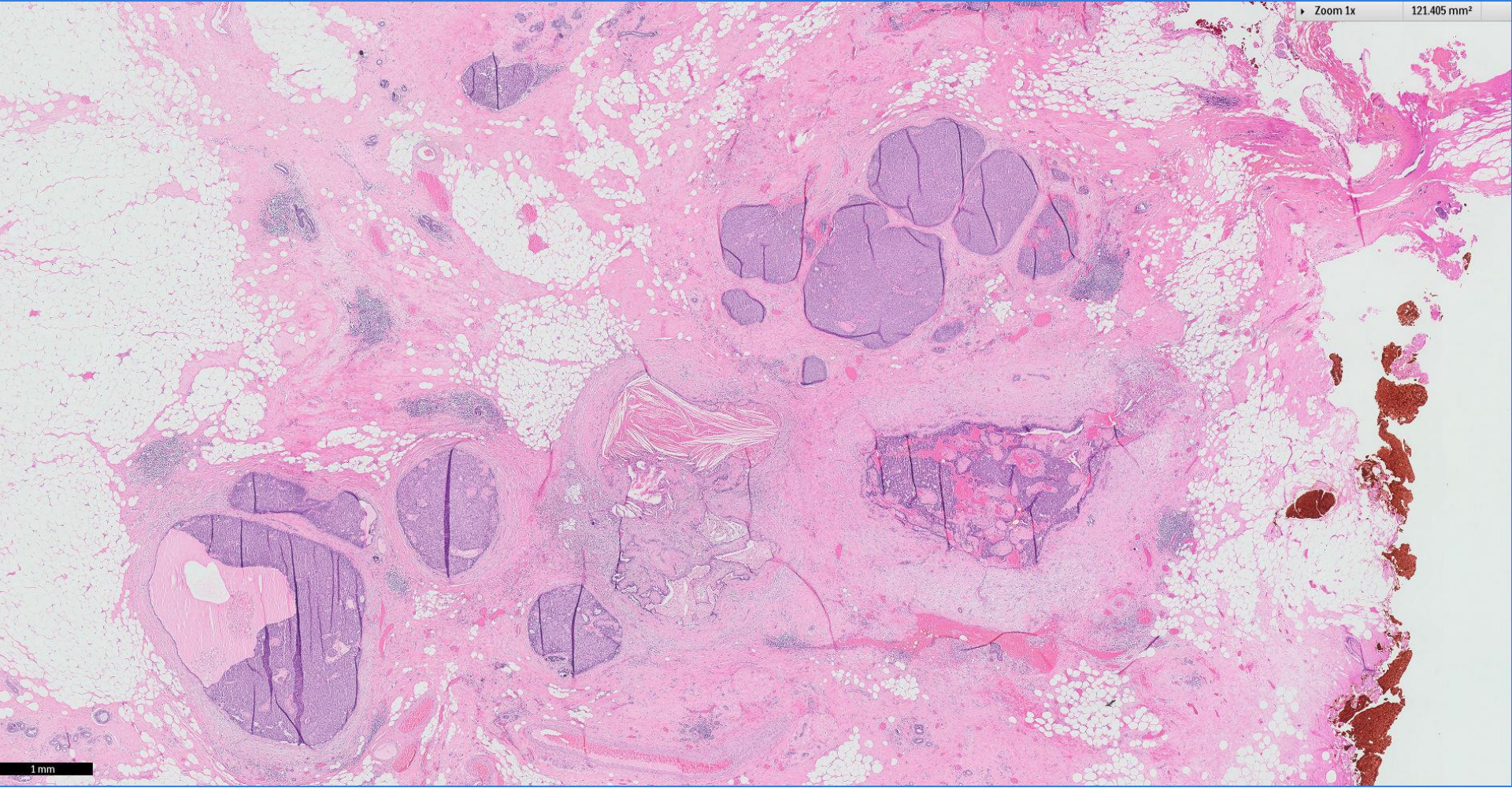
IAP

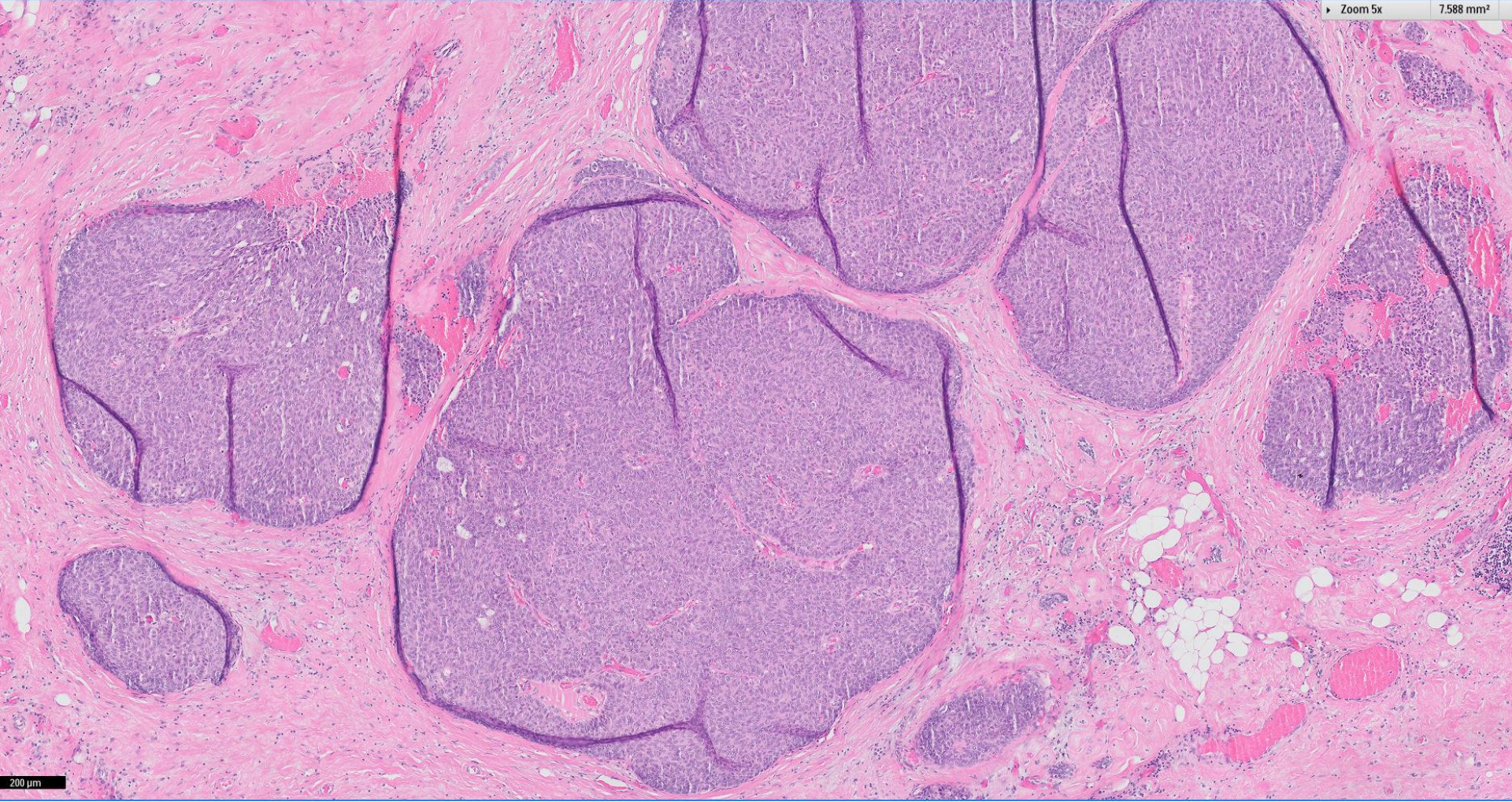
International Academy of Pathology
Singapore Division



Source: Atlas of Differential Diagnosis in Breast Pathology

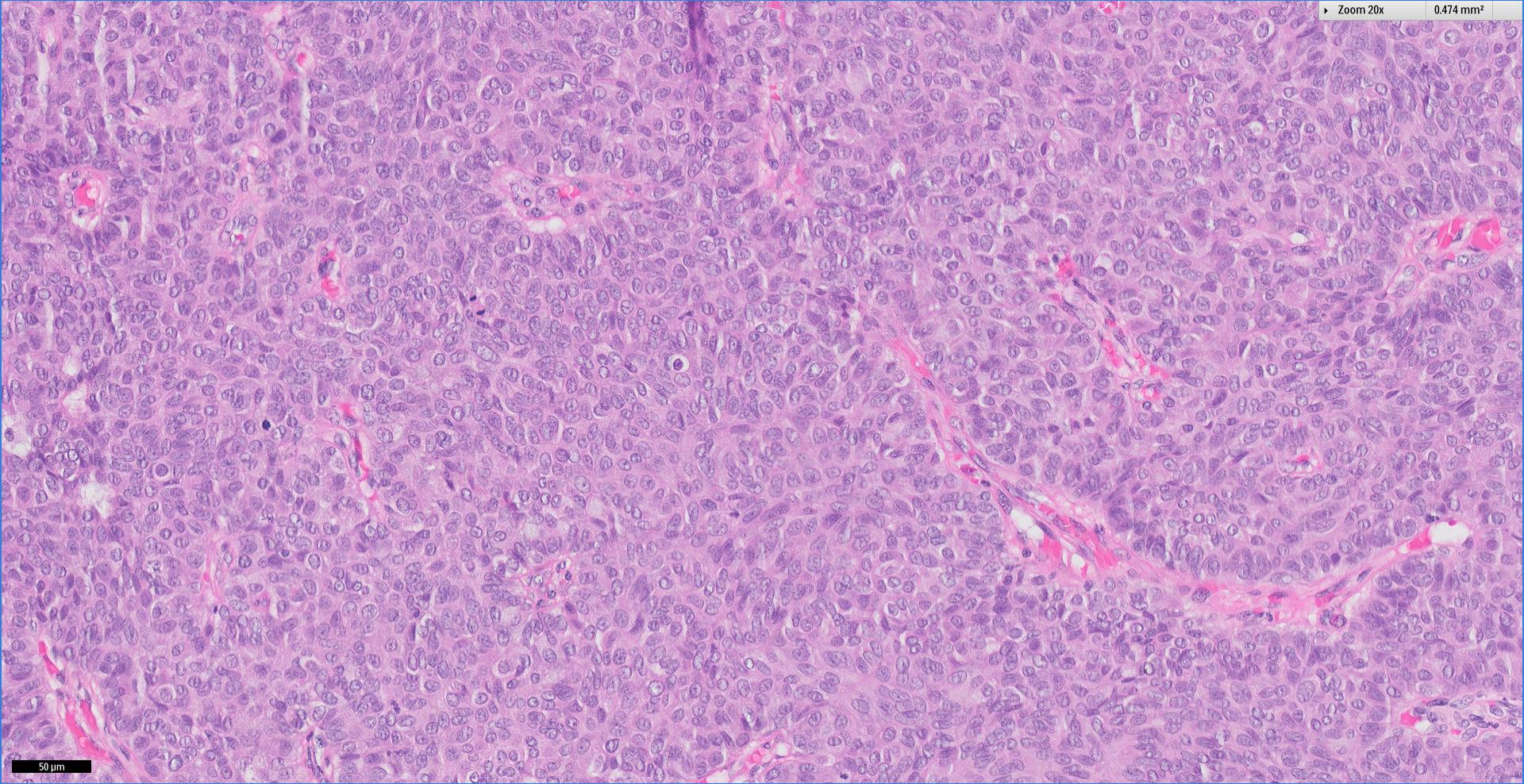




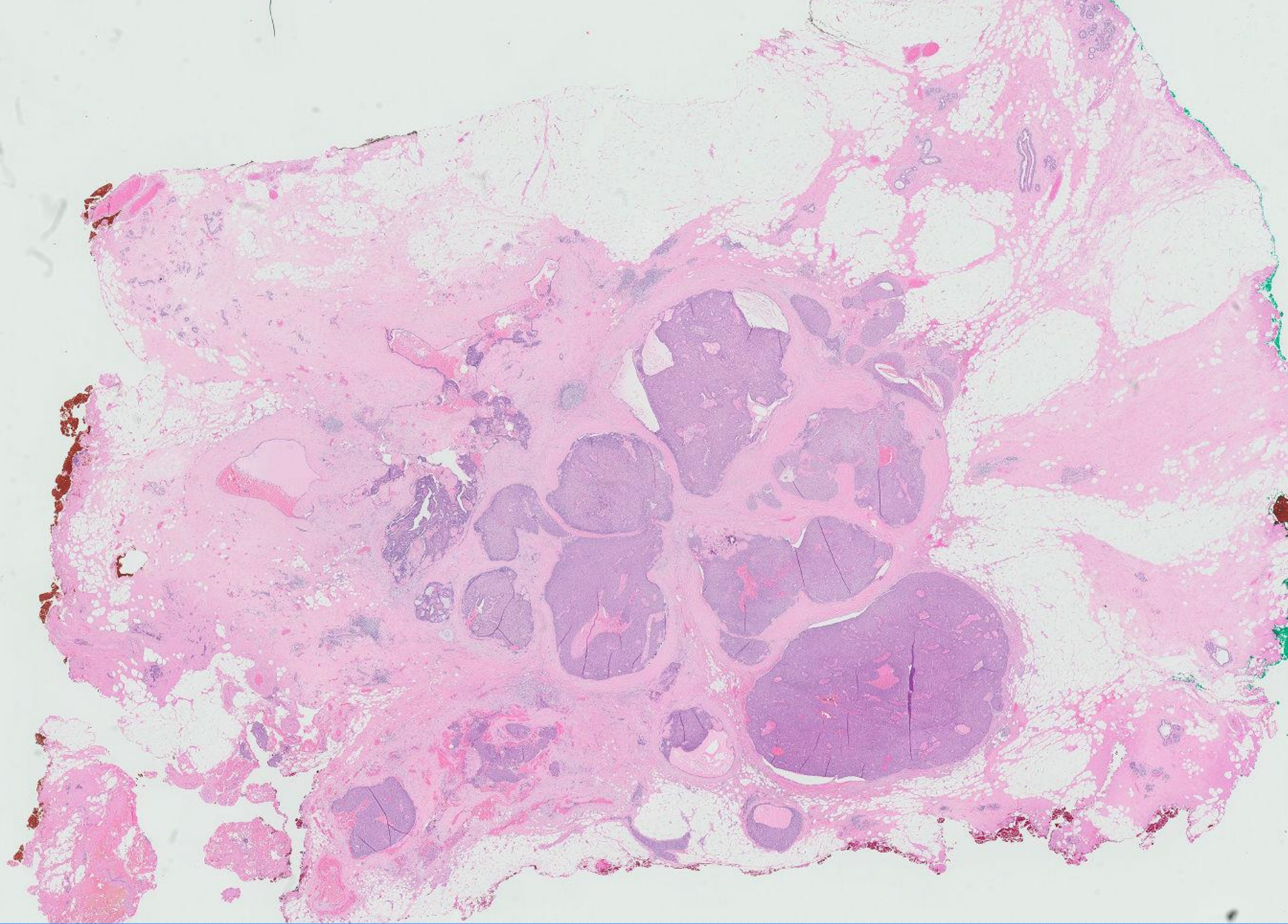


Zoom 20x

0.474 mm²

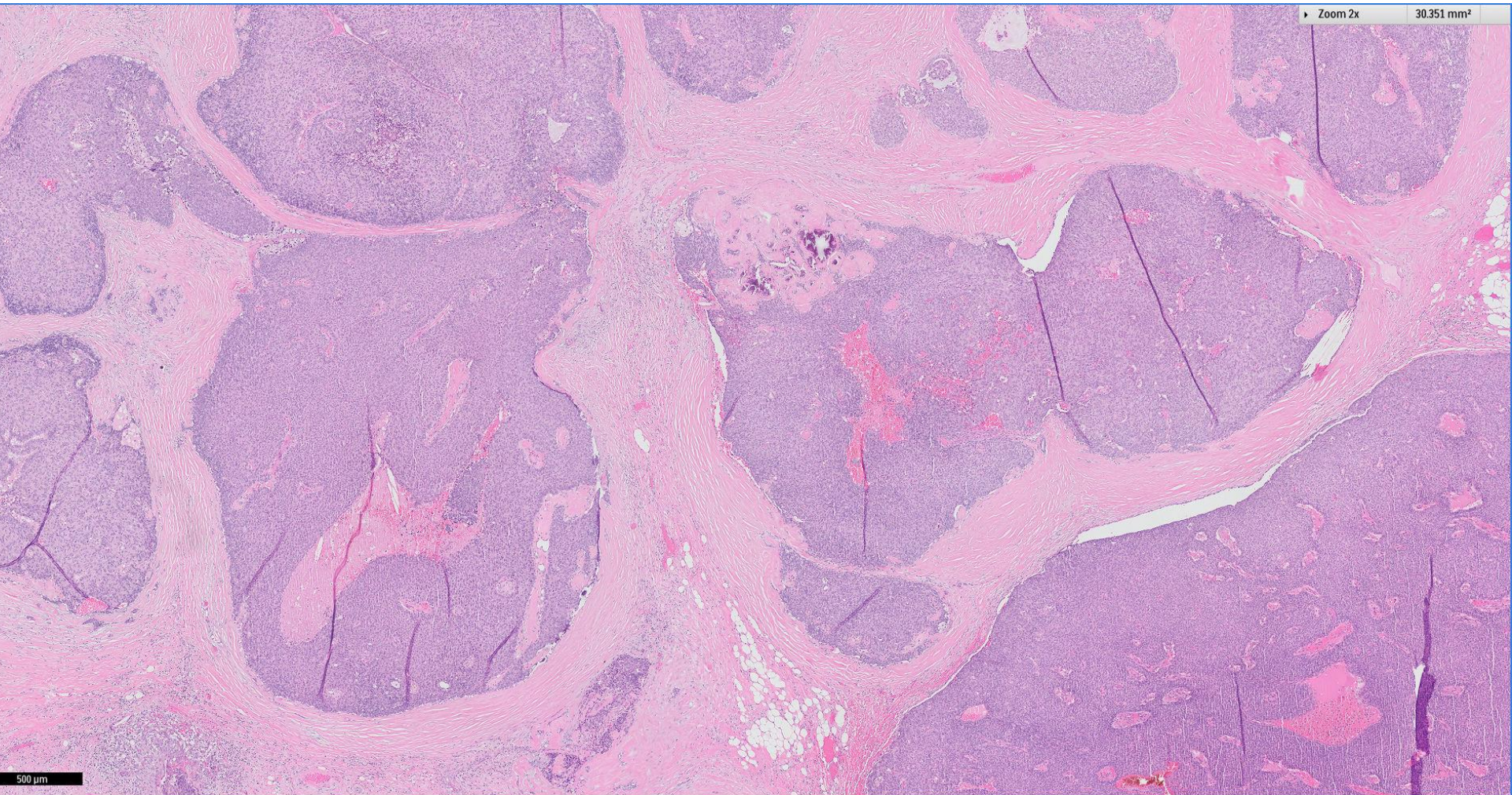


50 µm



Zoom 2x

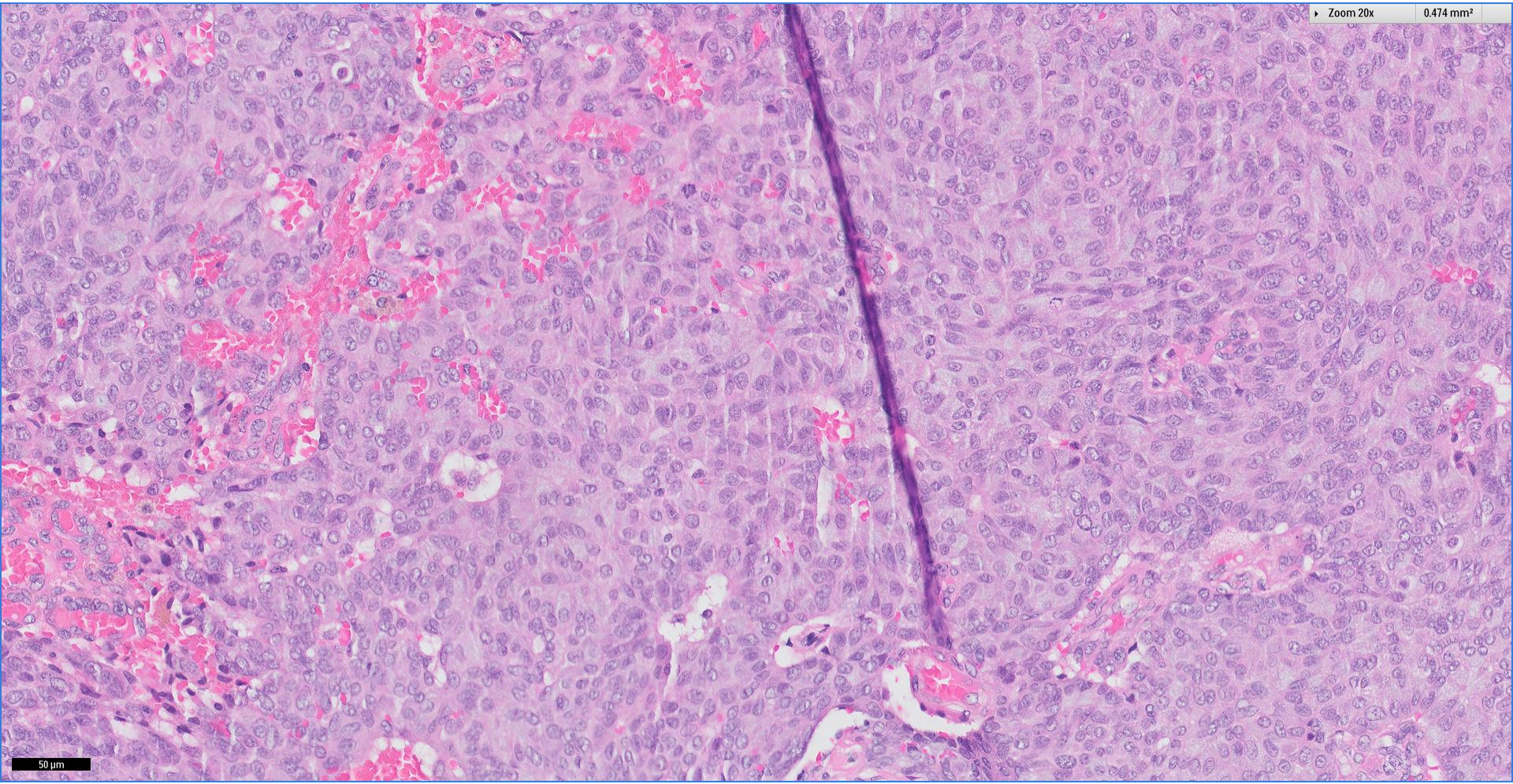
30.351 mm²



500 μm

Zoom 20x

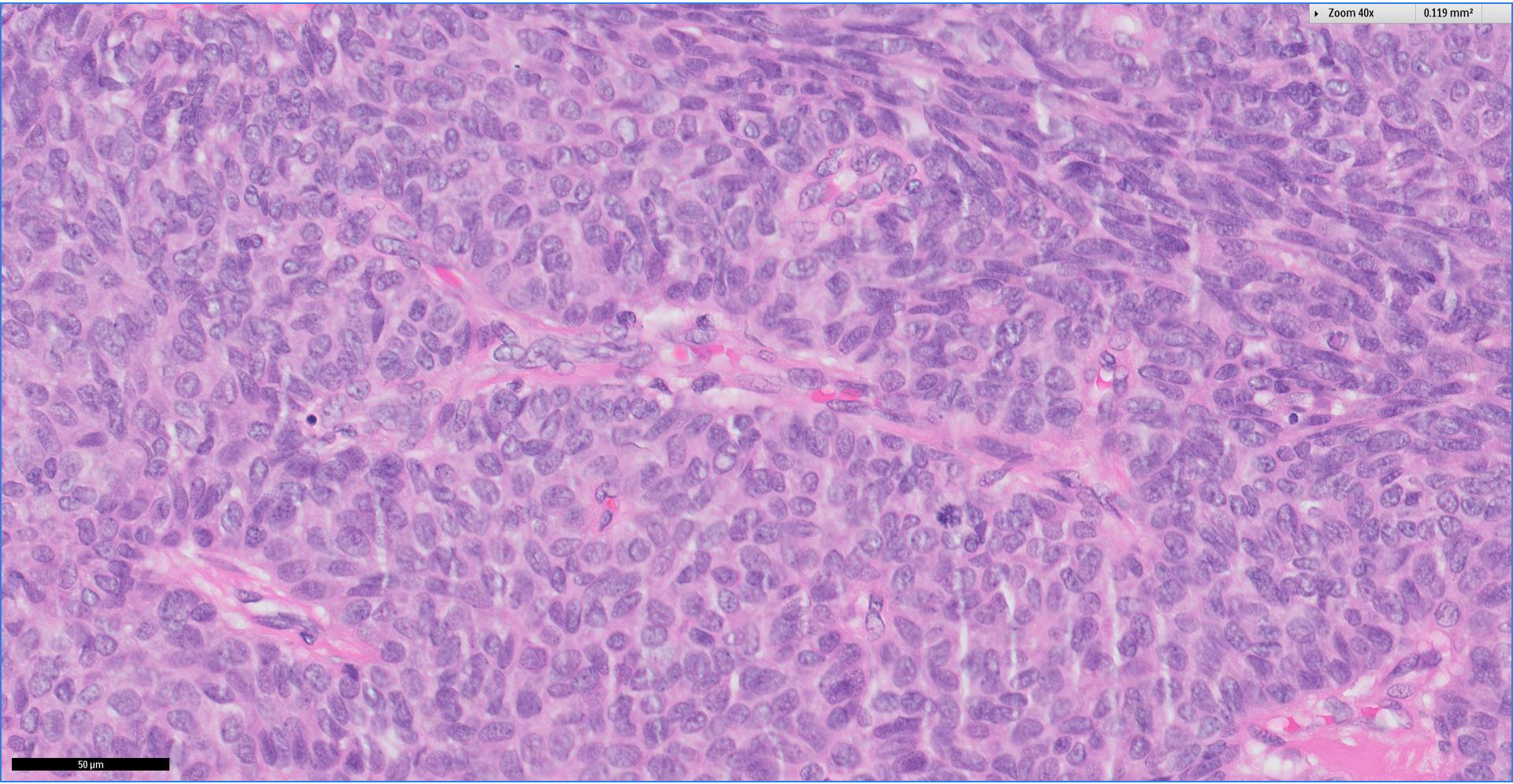
0.474 mm²



50 μm

Zoom 40x

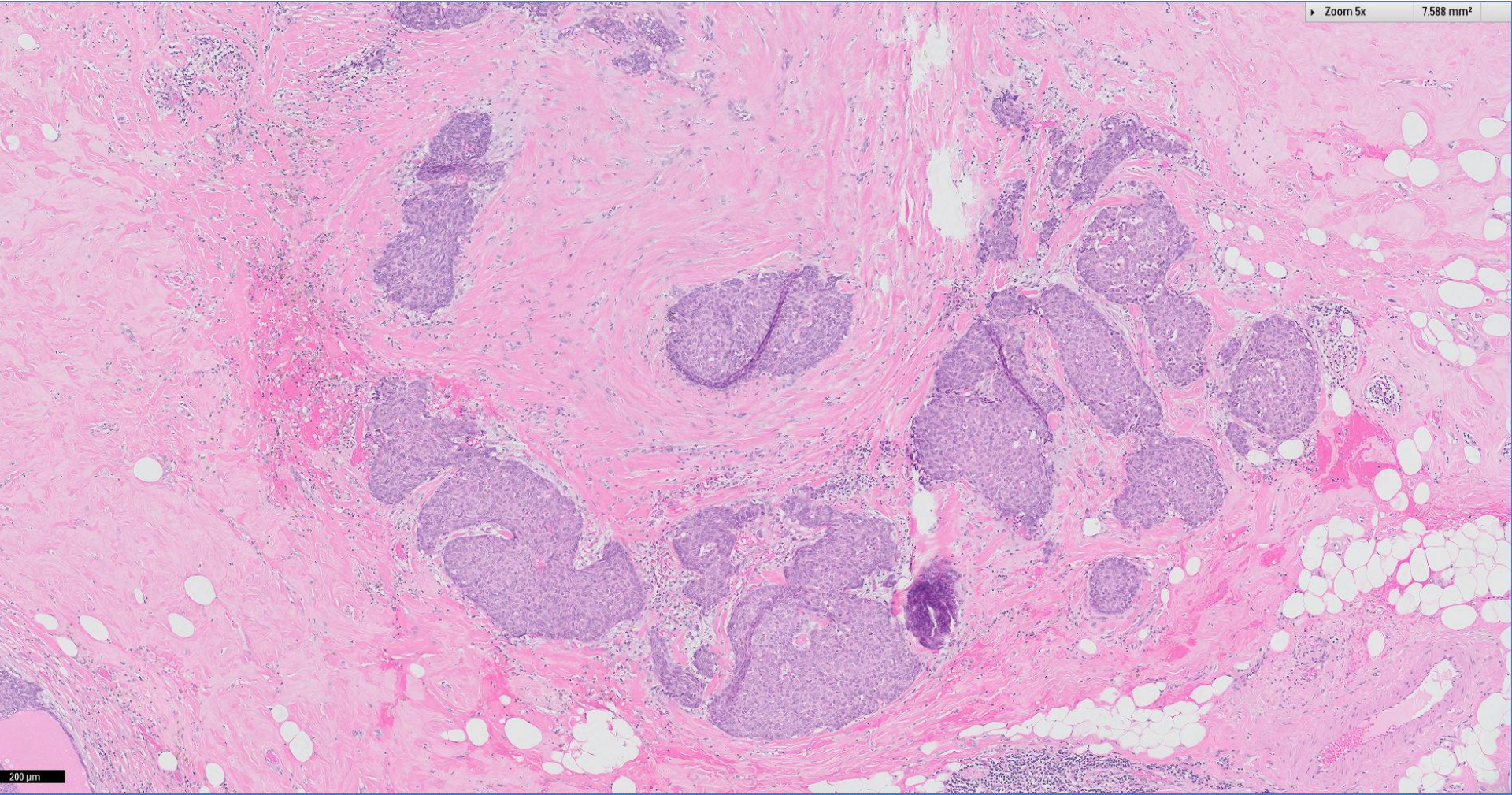
0.119 mm²



50 μm

Zoom 5x

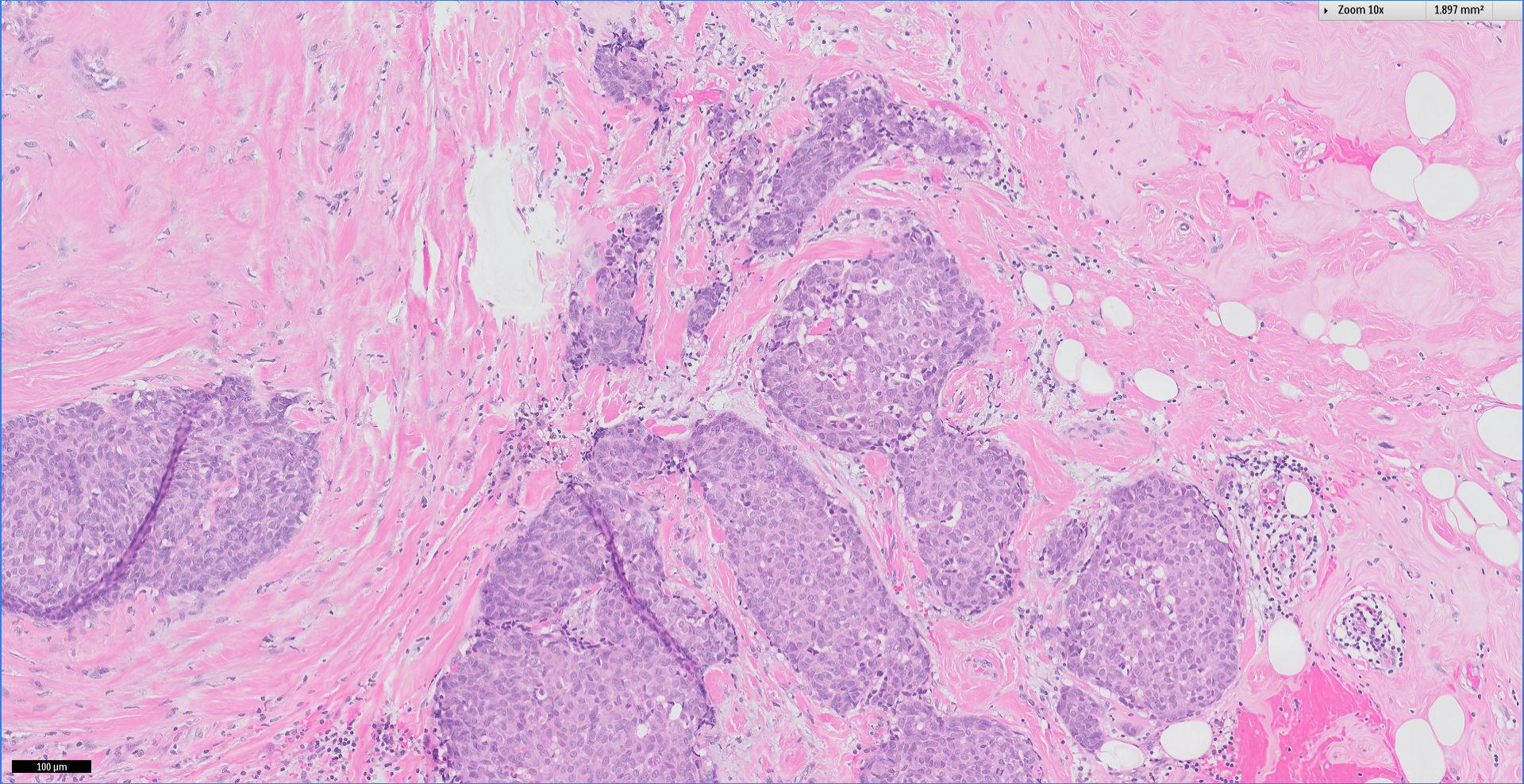
7.588 mm²



200 μm

Zoom 10x

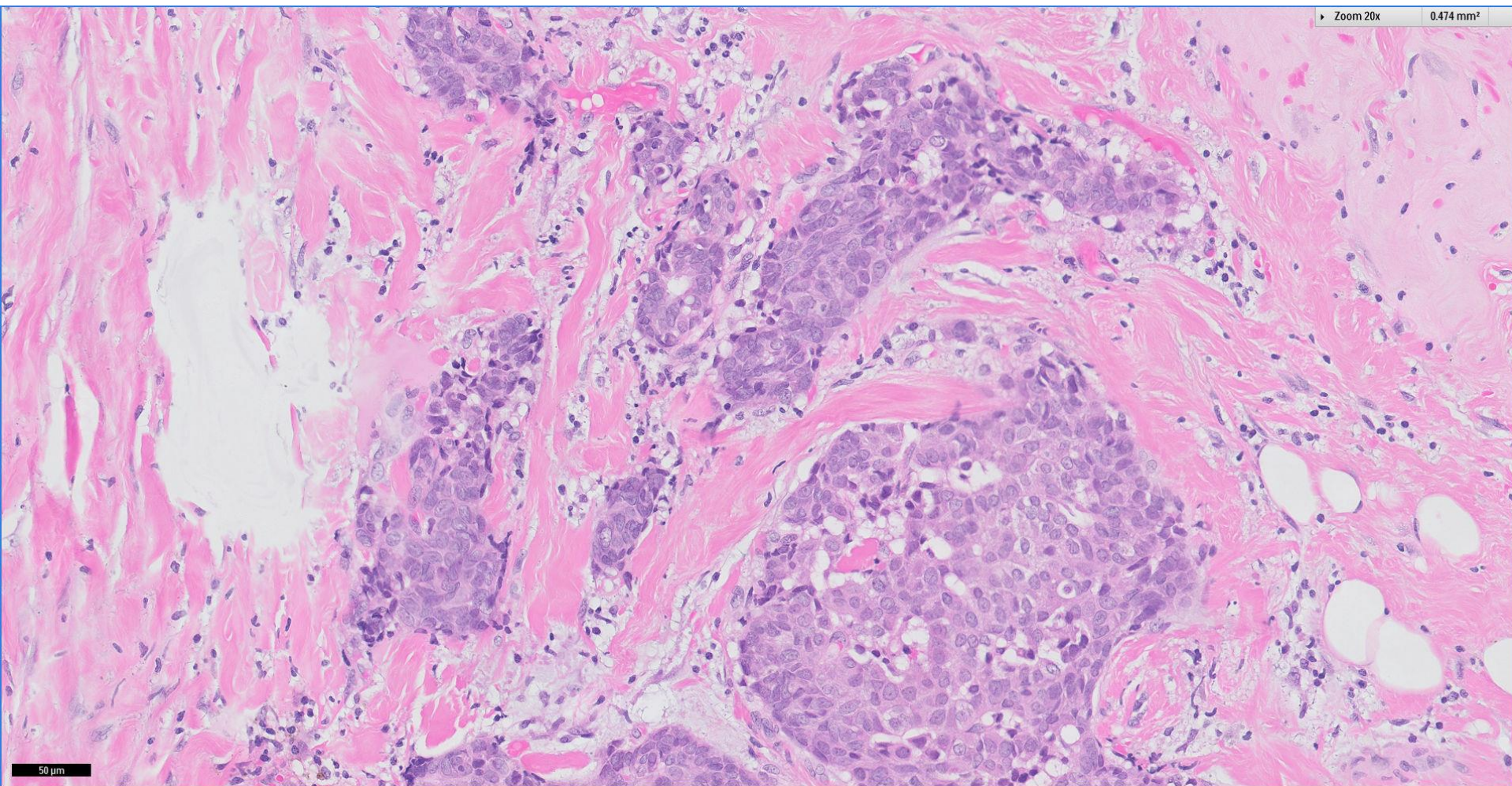
1.897 mm²



100 μ m

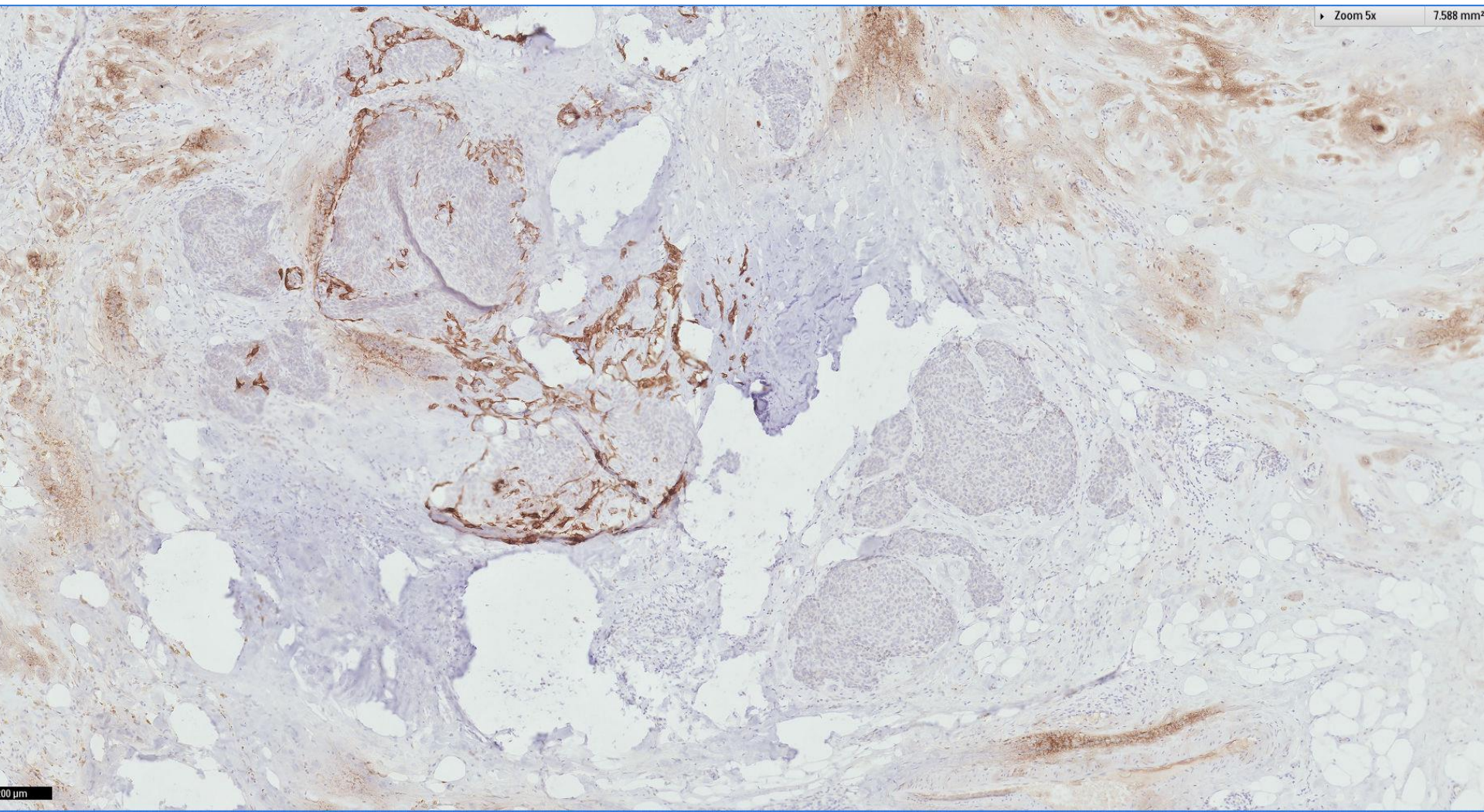
Zoom 20x

0.474 mm²



50 μm

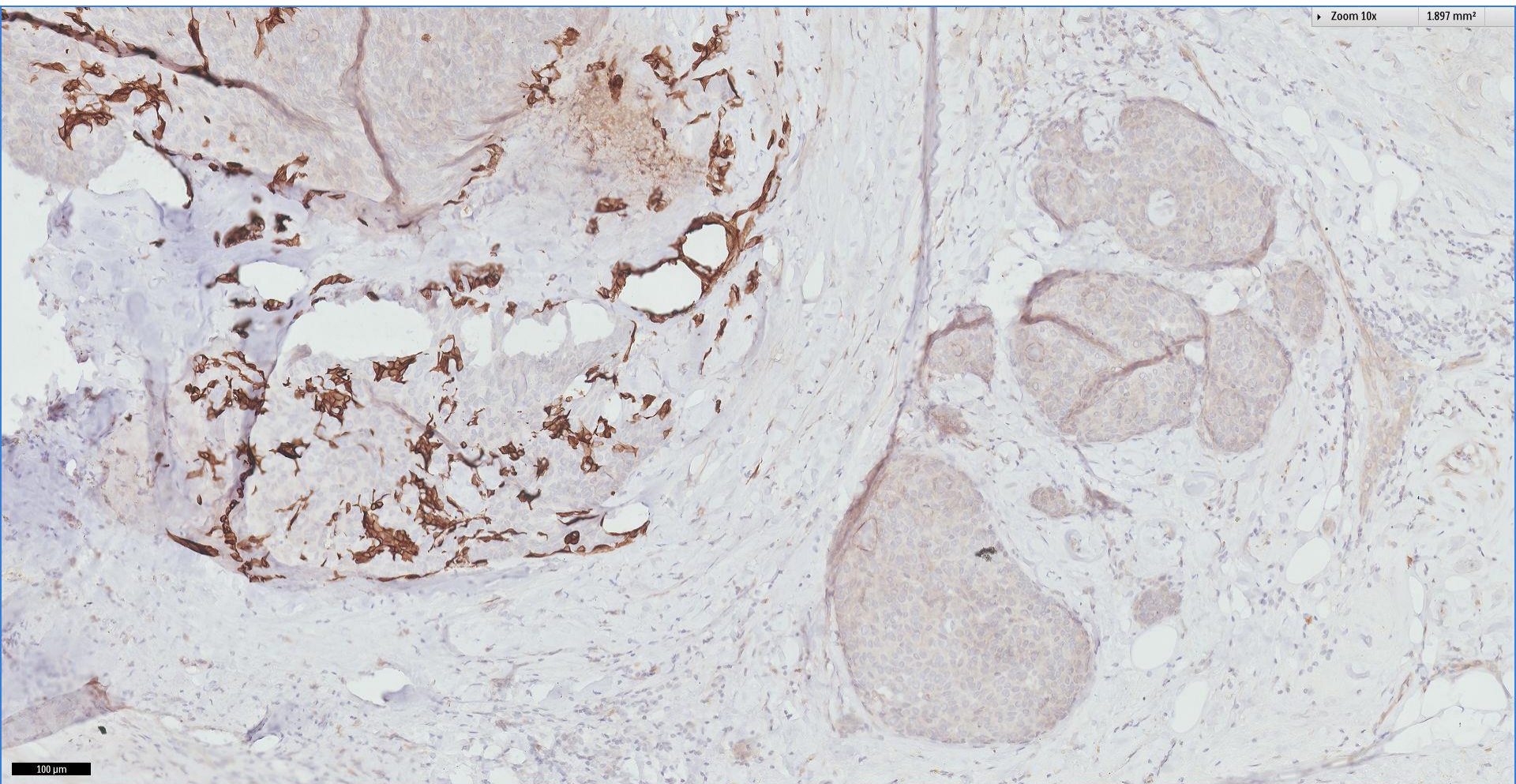
CK5/6



Zoom 5x 7.588 mm²

00 µm

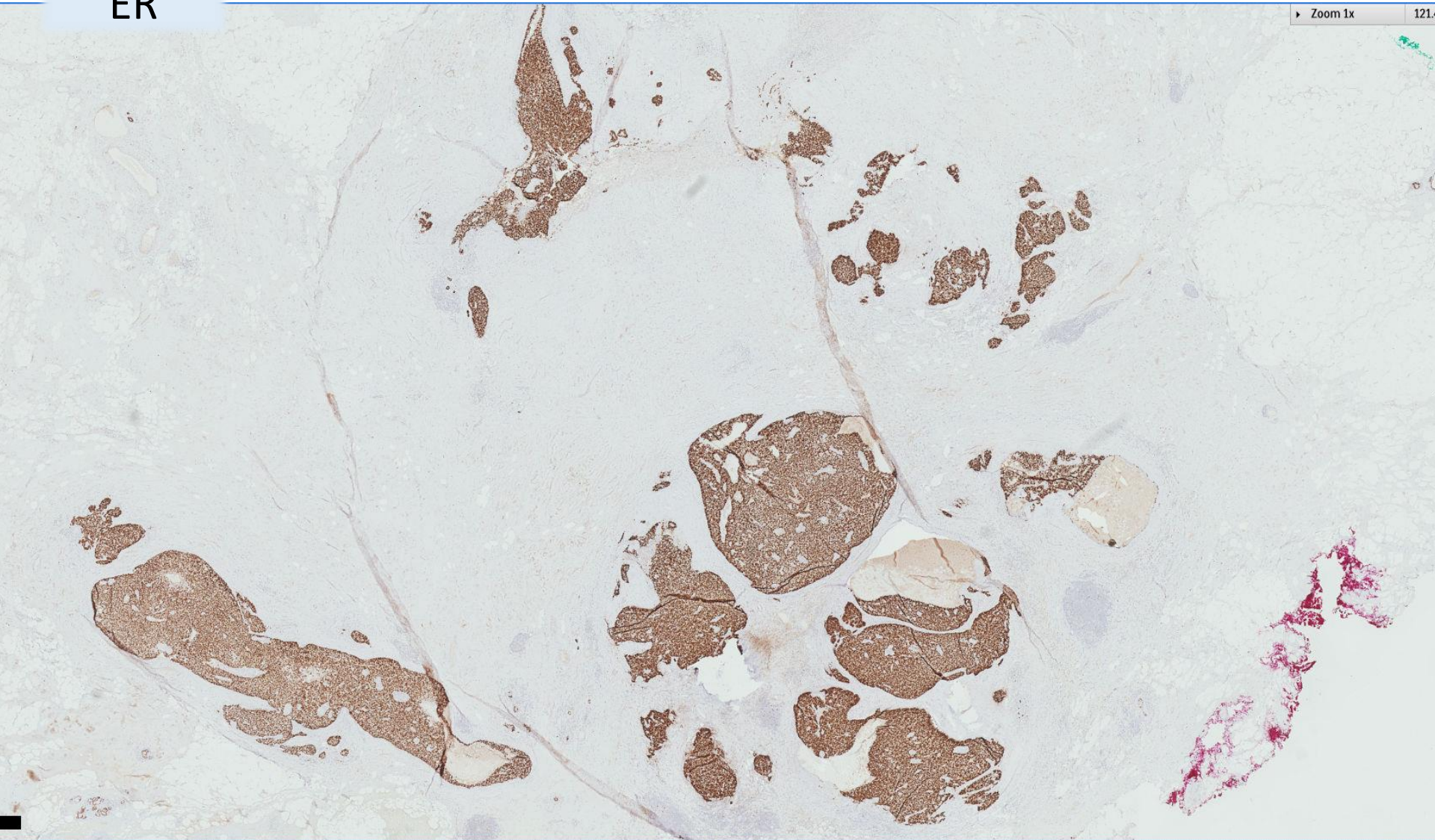
CK14



ER

Zoom 1x

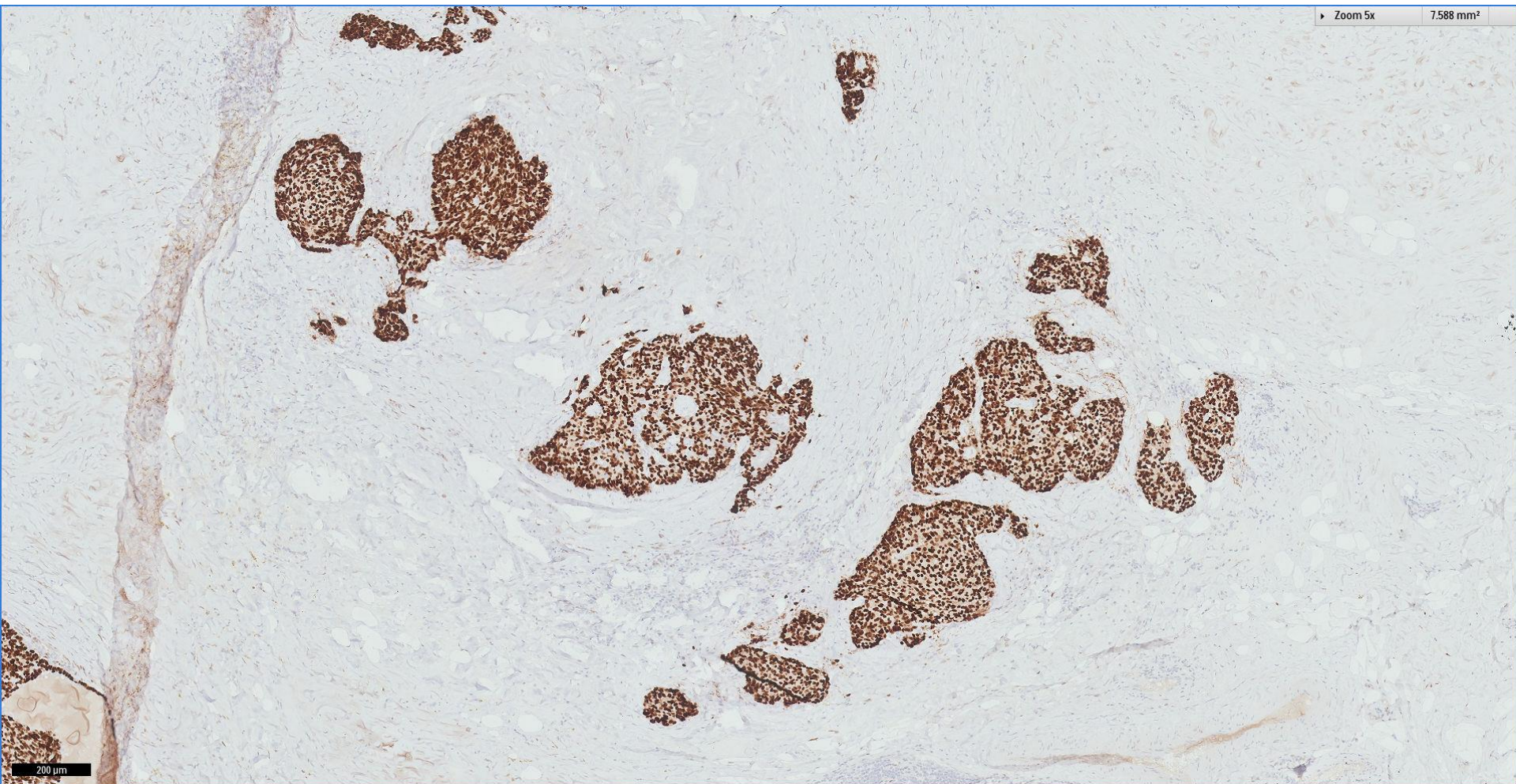
121



ER

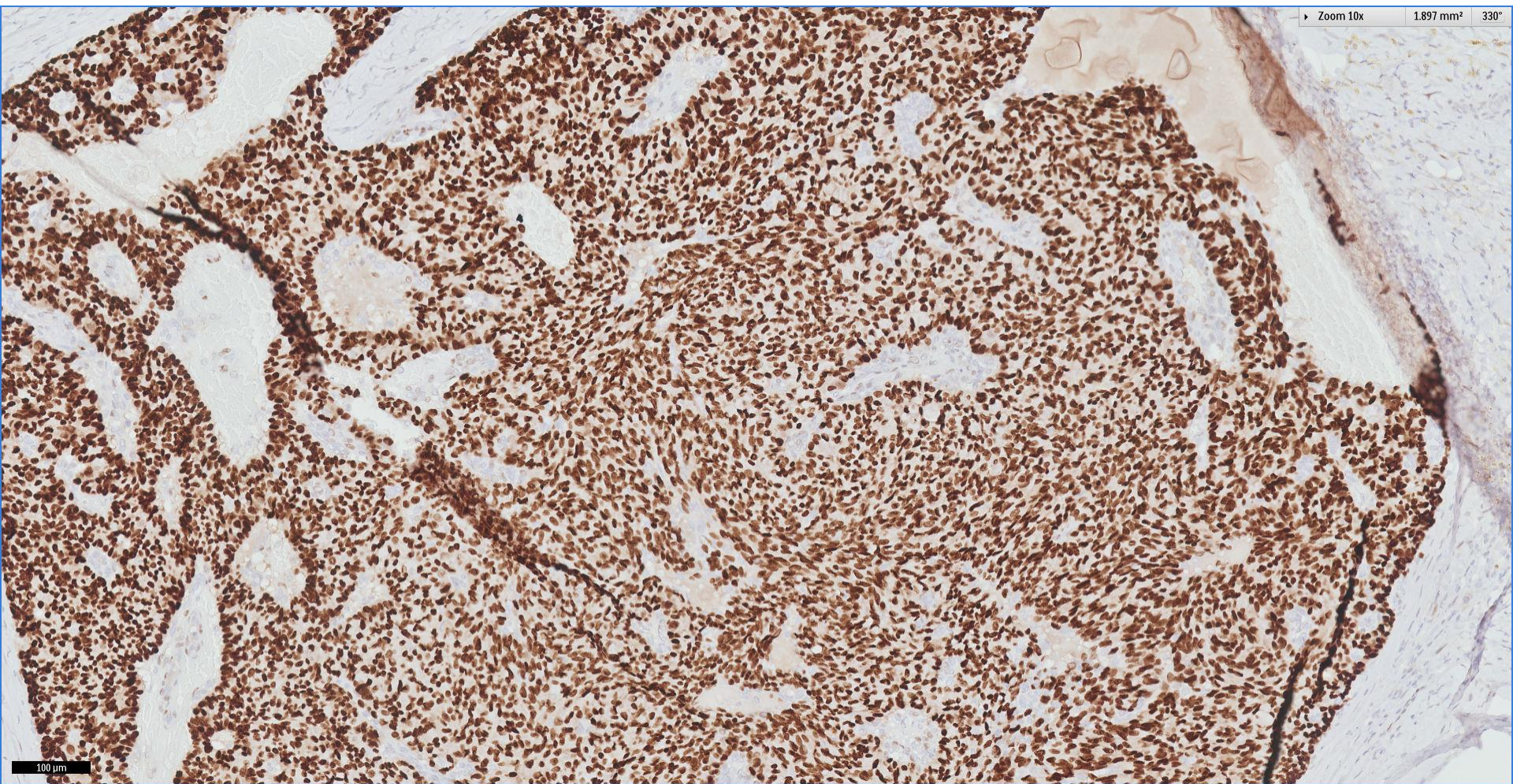
Zoom 5x

7.588 mm²



200 μm

ER



Diagnosis:

Left breast lump, excision biopsy ~

Invasive solid-papillary carcinoma, grade 1, 2.5mm.

ER positive, PR positive, cerbB2 negative.

Extensive solid-papillary carcinoma in situ, low nuclear grade, 18mm.



Singapore
General Hospital

SingHealth

Division of Pathology



SingHealth DukeNUS
ACADEMIC MEDICAL CENTRE

PATHOLOGY

IAP

International Academy of Pathology
Singapore Division

 Breast
Pathology
Course 2017

