

## Case 10

41 year old Indian female.  
Right completion mastectomy.



Singapore  
General Hospital

SingHealth

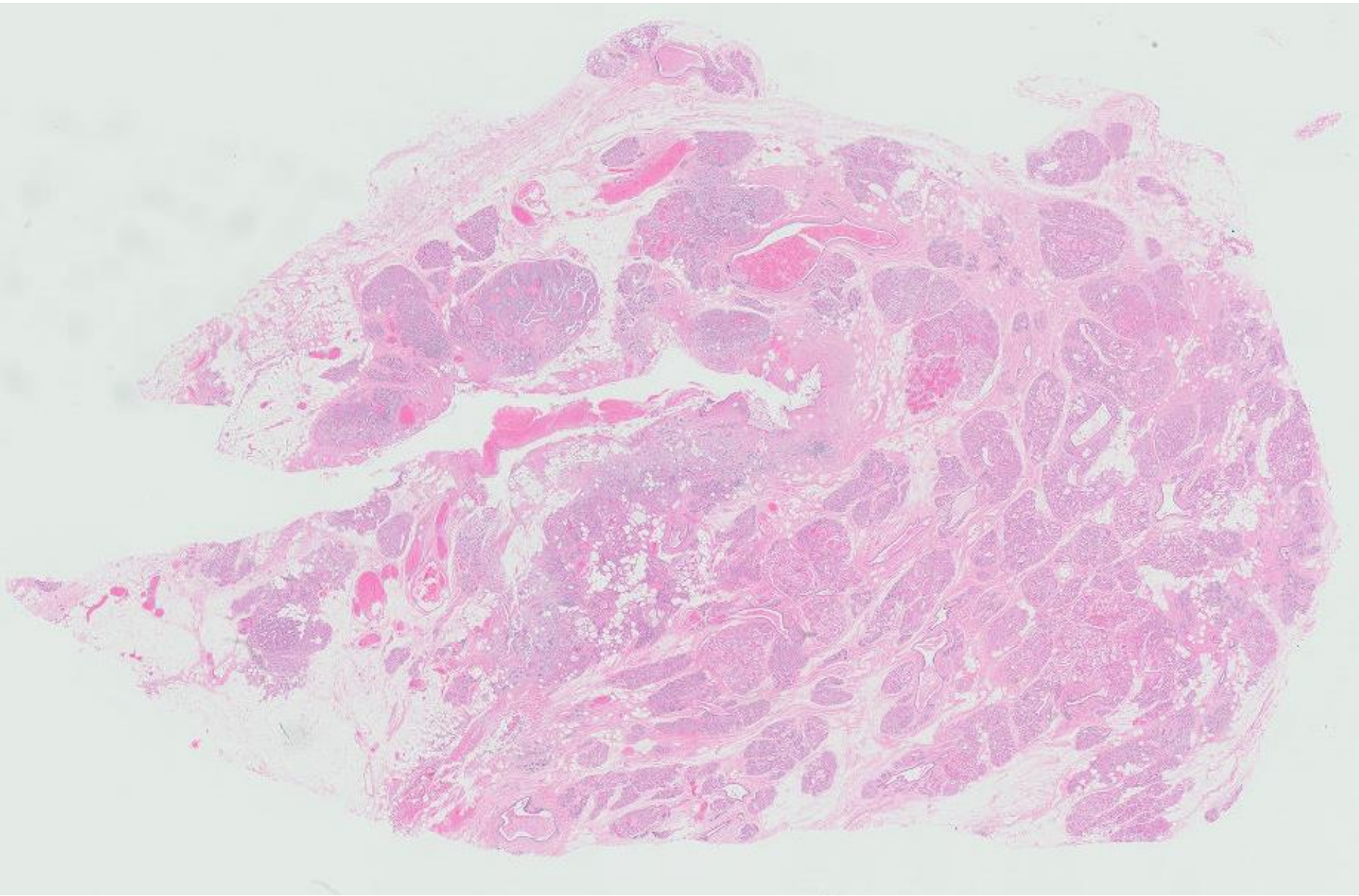
Division of Pathology



**PATHOLOGY**

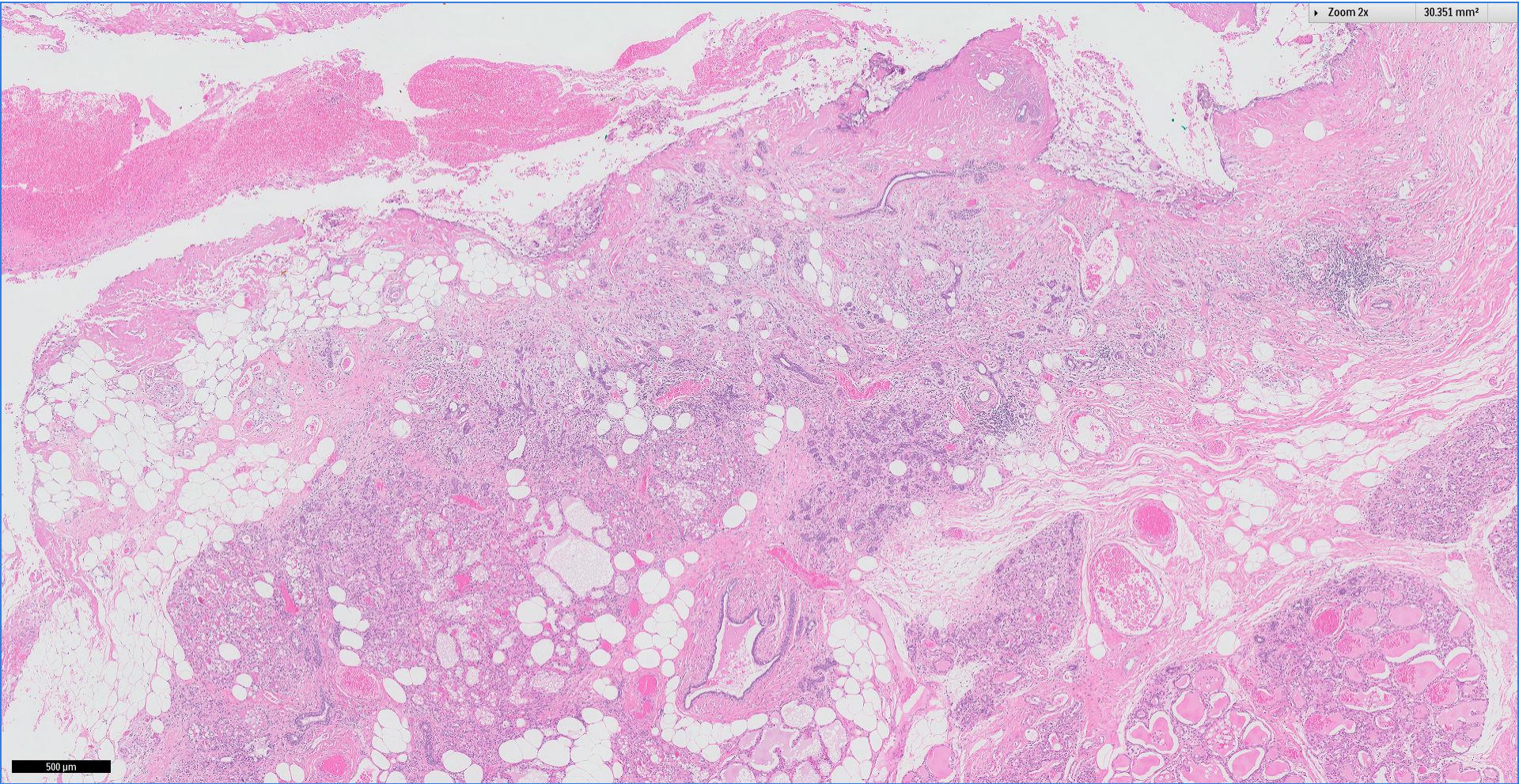
**IAP**

International Academy of Pathology  
Singapore Division



Zoom 2x

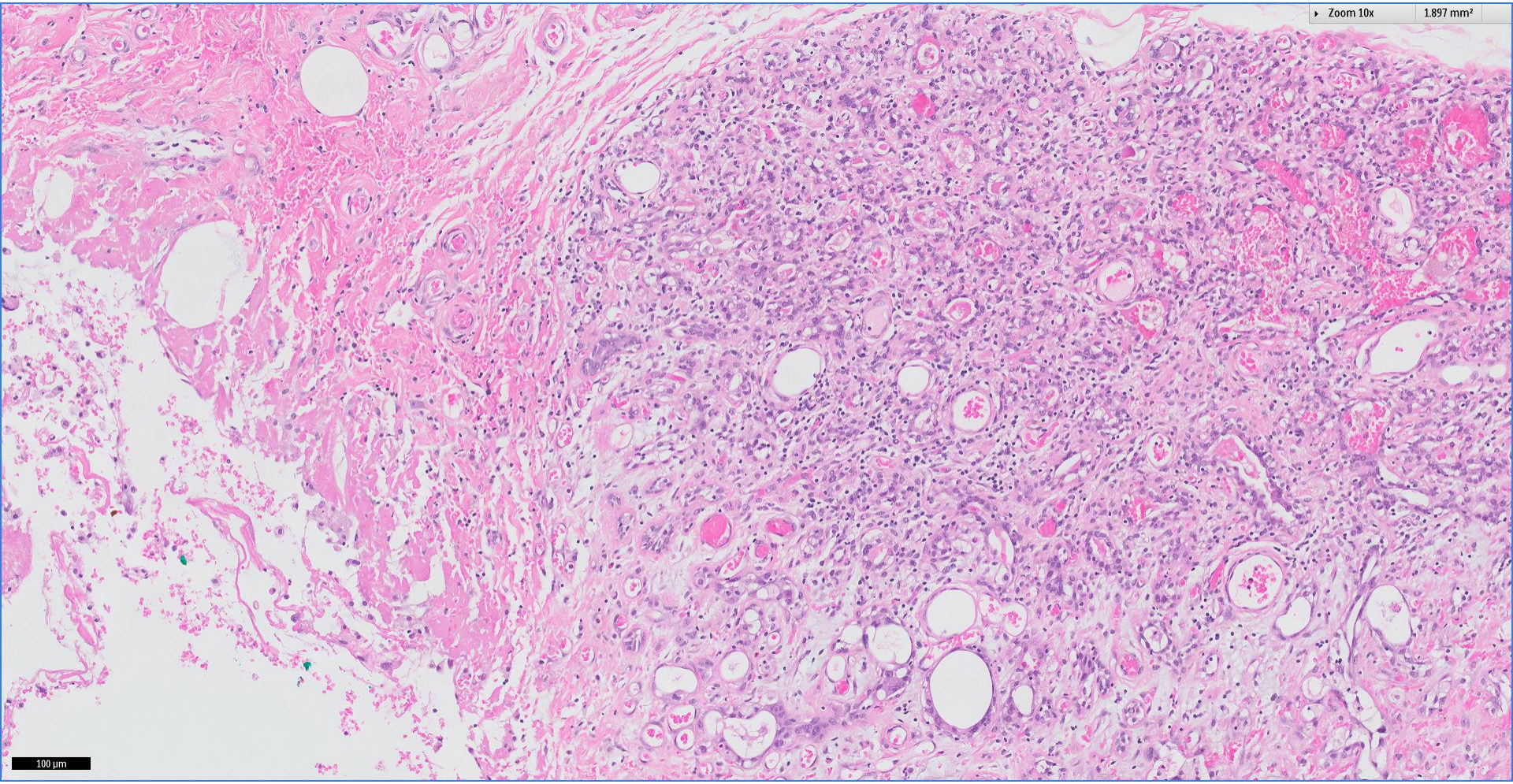
30.351 mm<sup>2</sup>



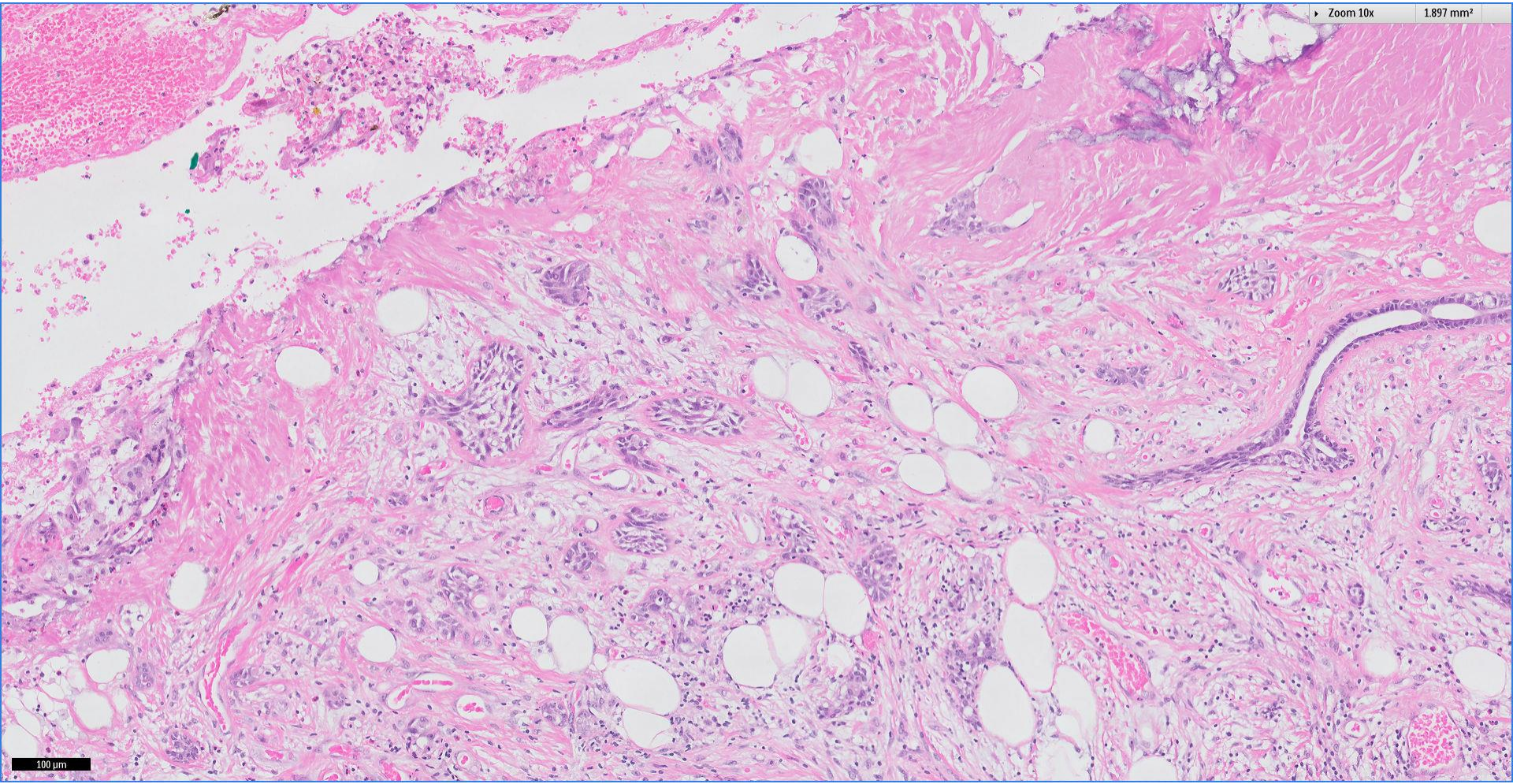
500 μm

Zoom 10x

1.897 mm<sup>2</sup>

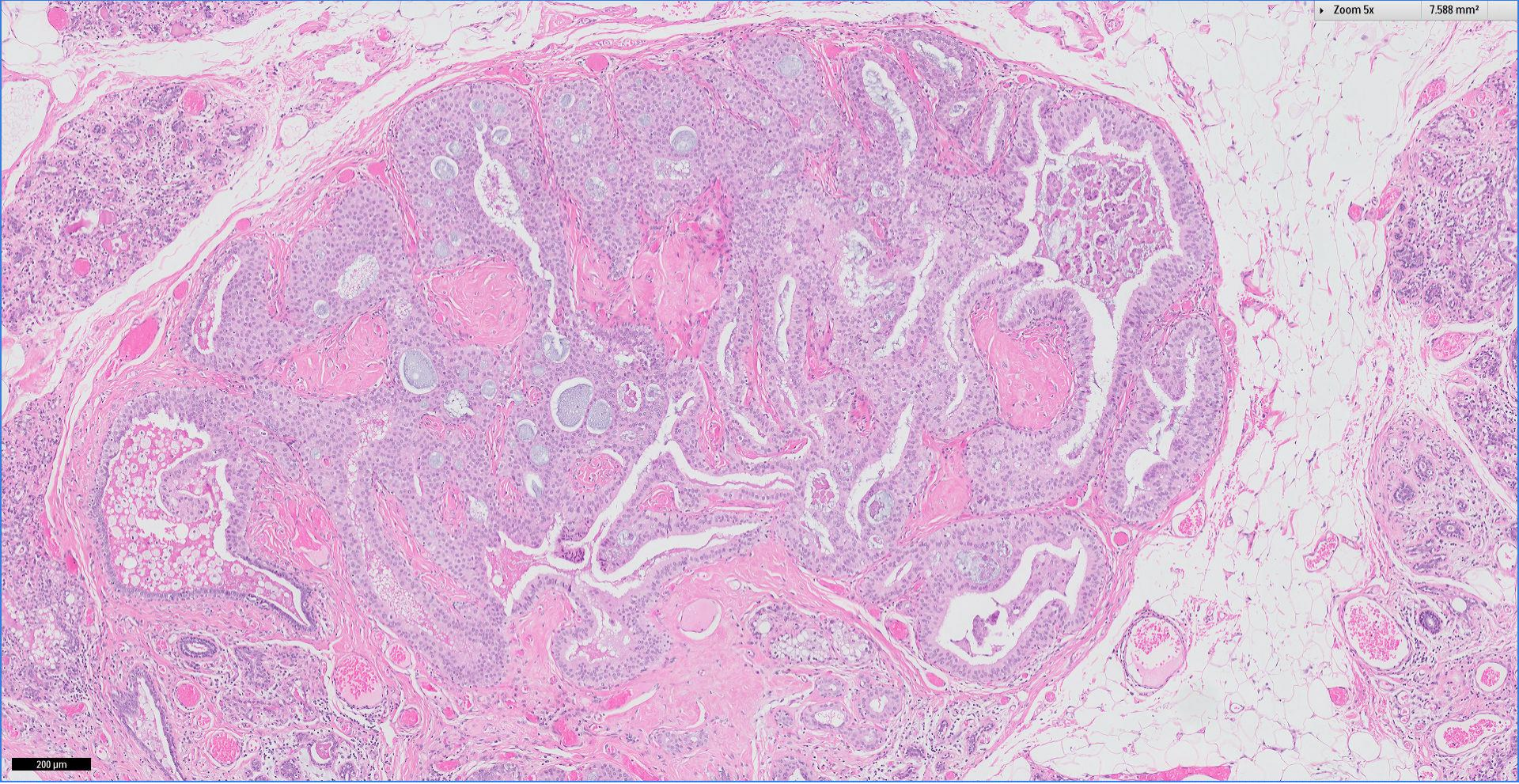


100  $\mu$ m

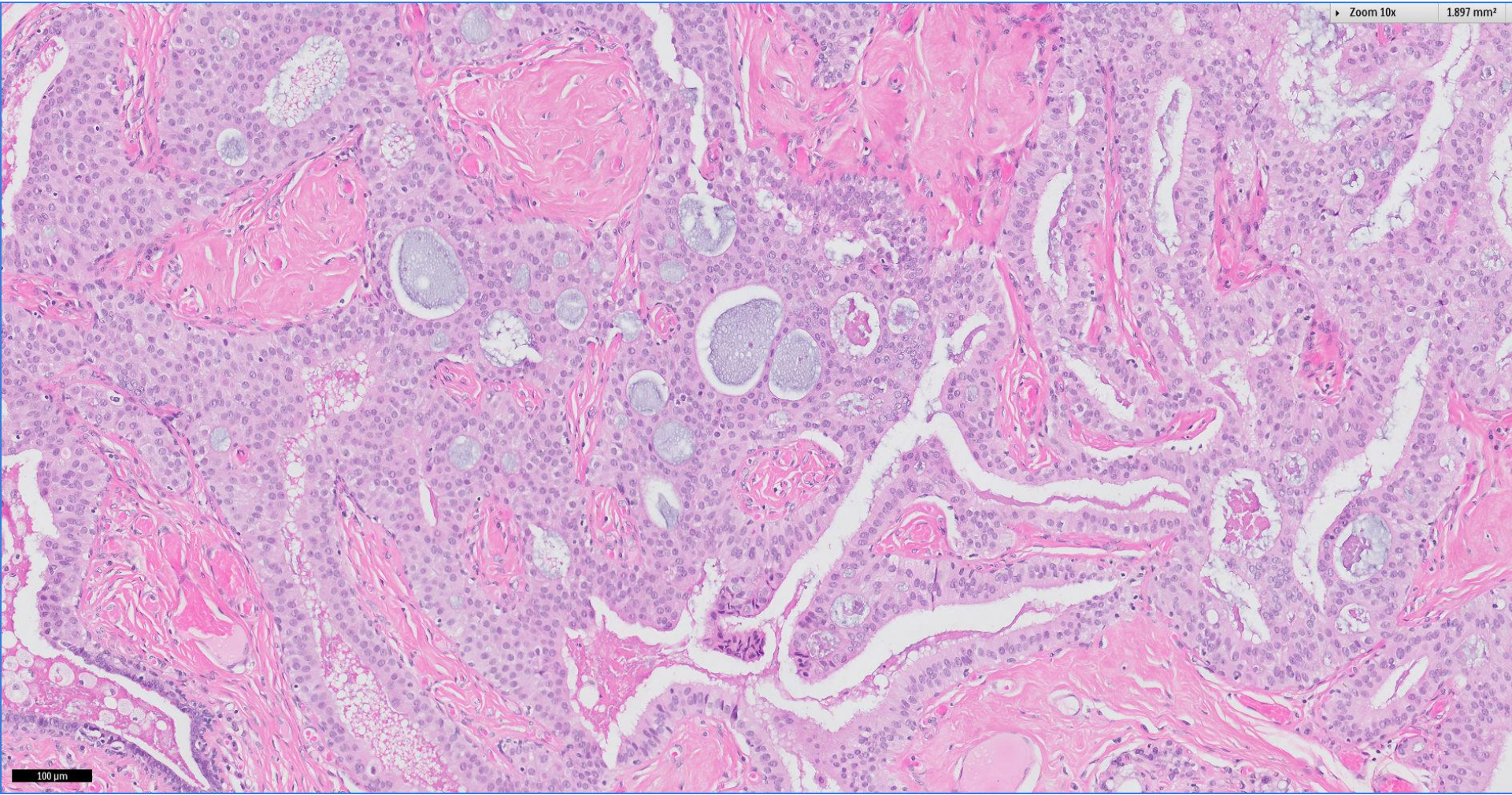


Zoom 5x

7.588 mm<sup>2</sup>



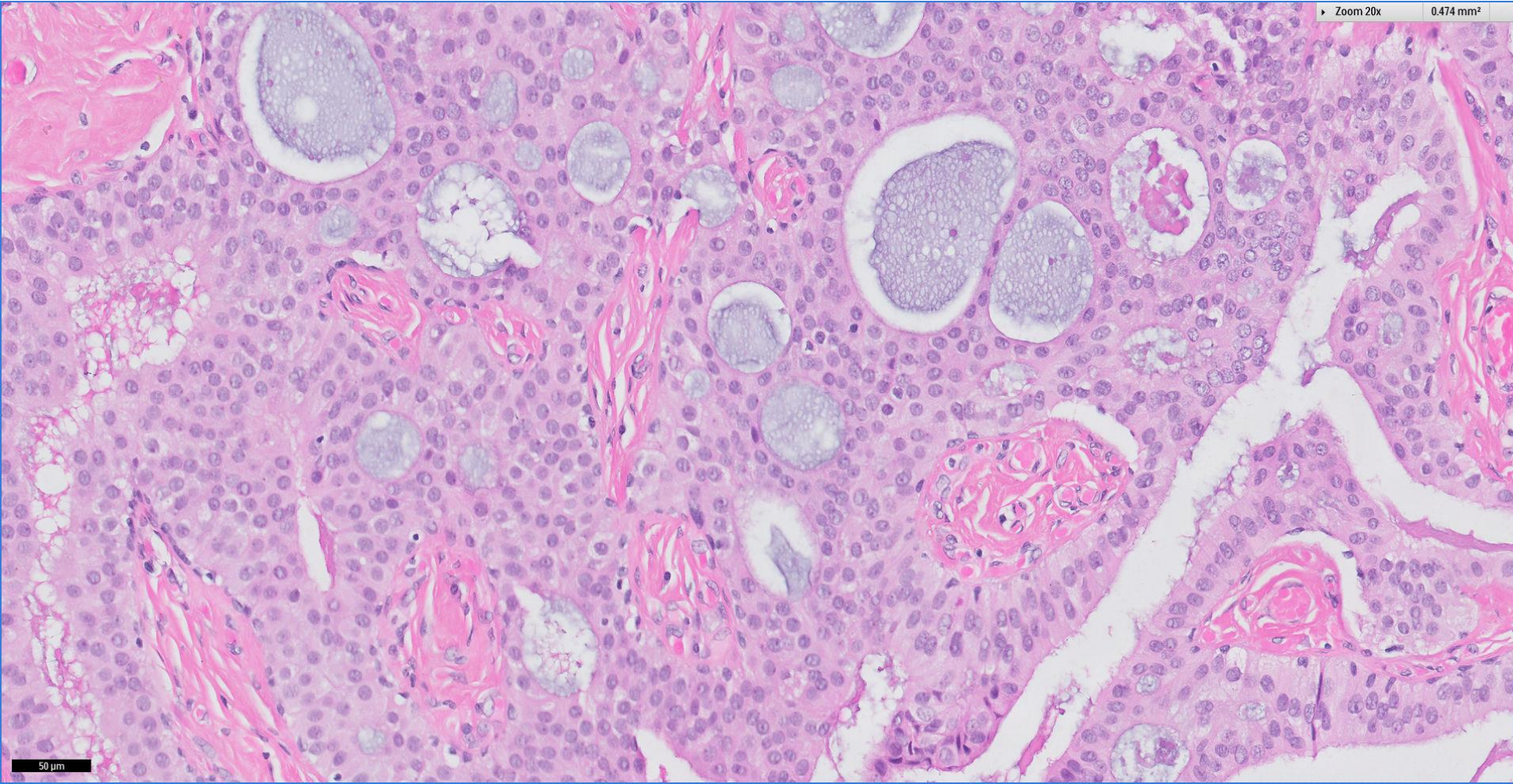
200  $\mu$ m



100 μm

Zoom 20x

0.474 mm<sup>2</sup>

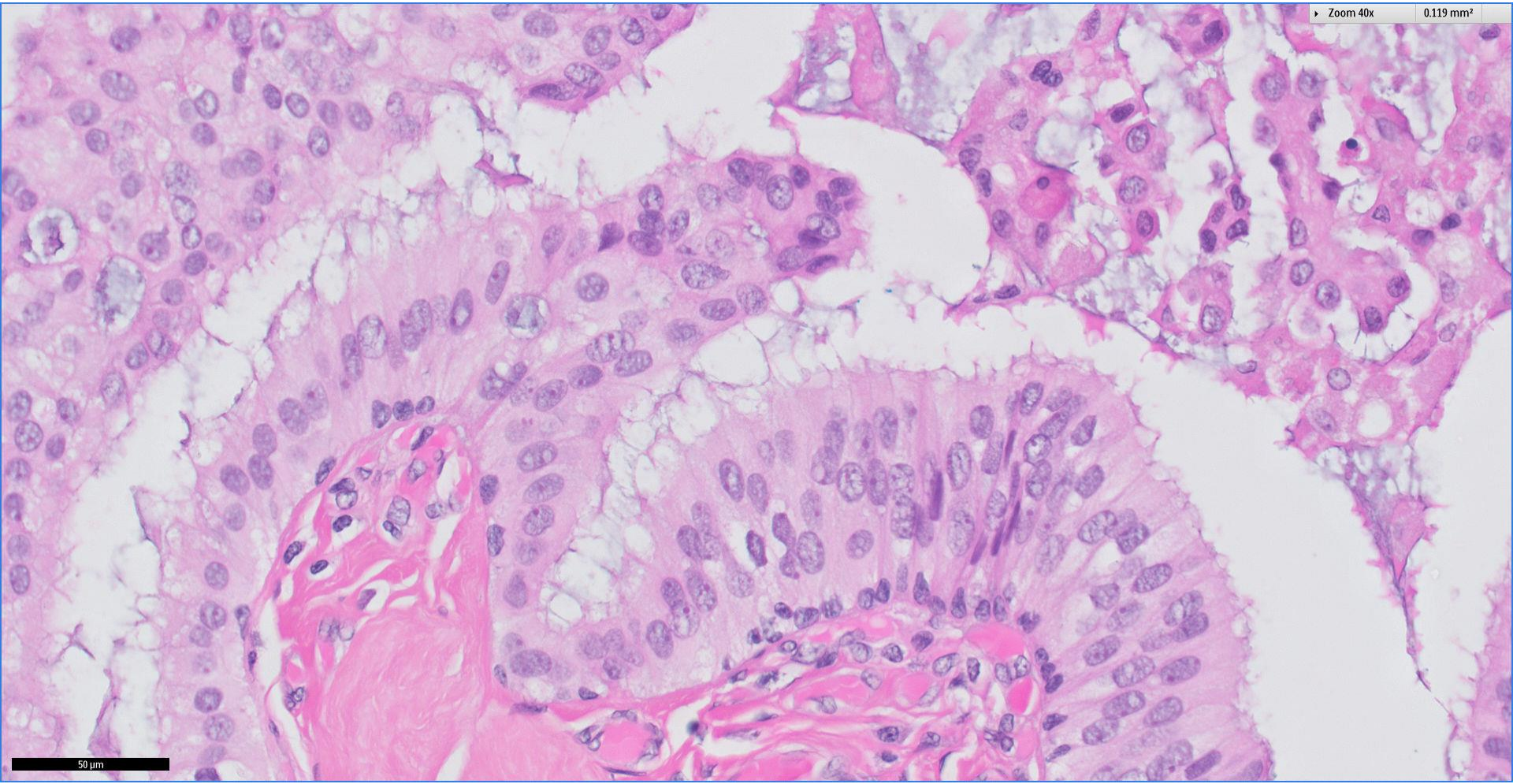


50 μm



Zoom 40x

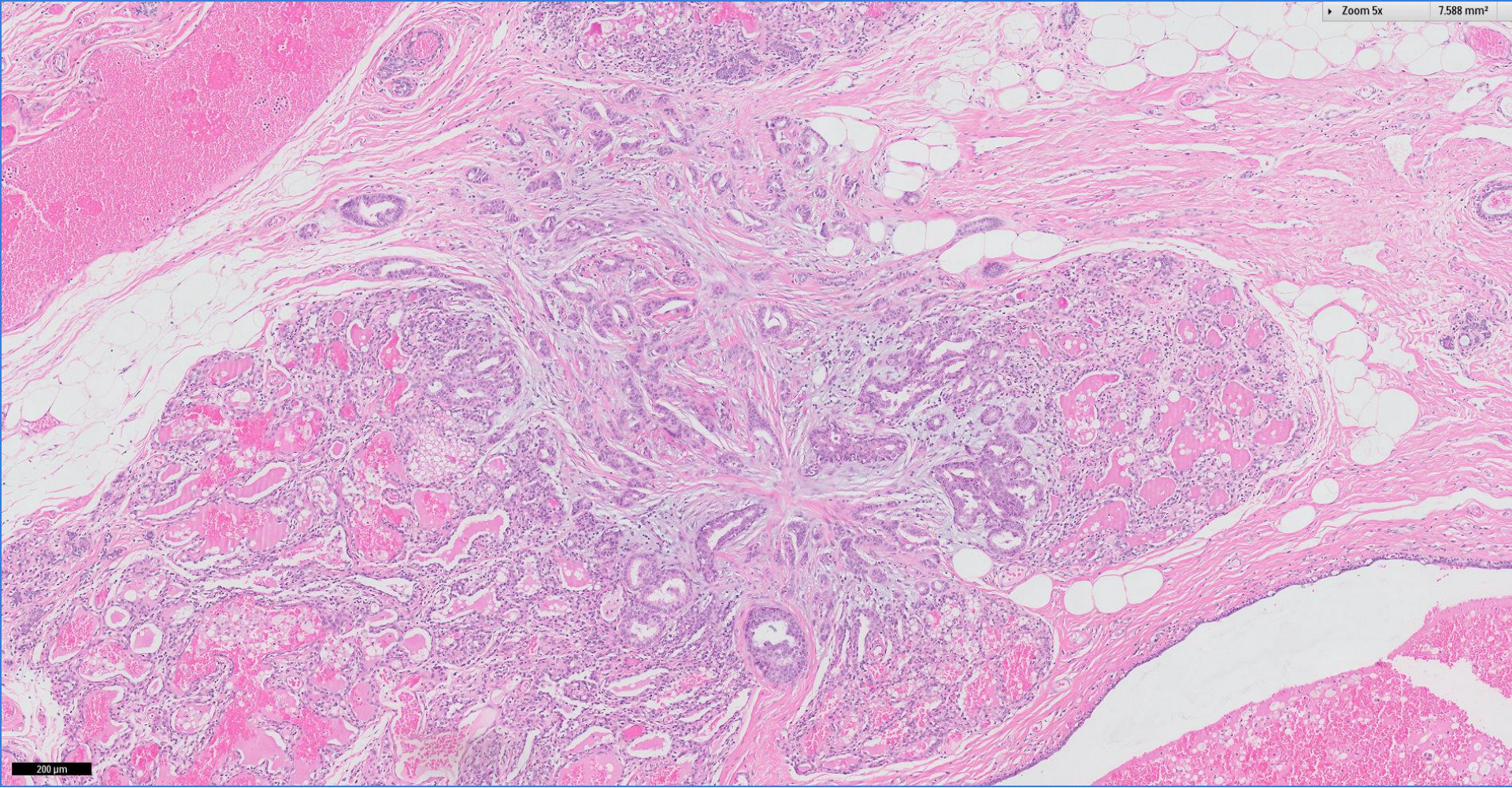
0.119 mm<sup>2</sup>



50 μm

Zoom 5x

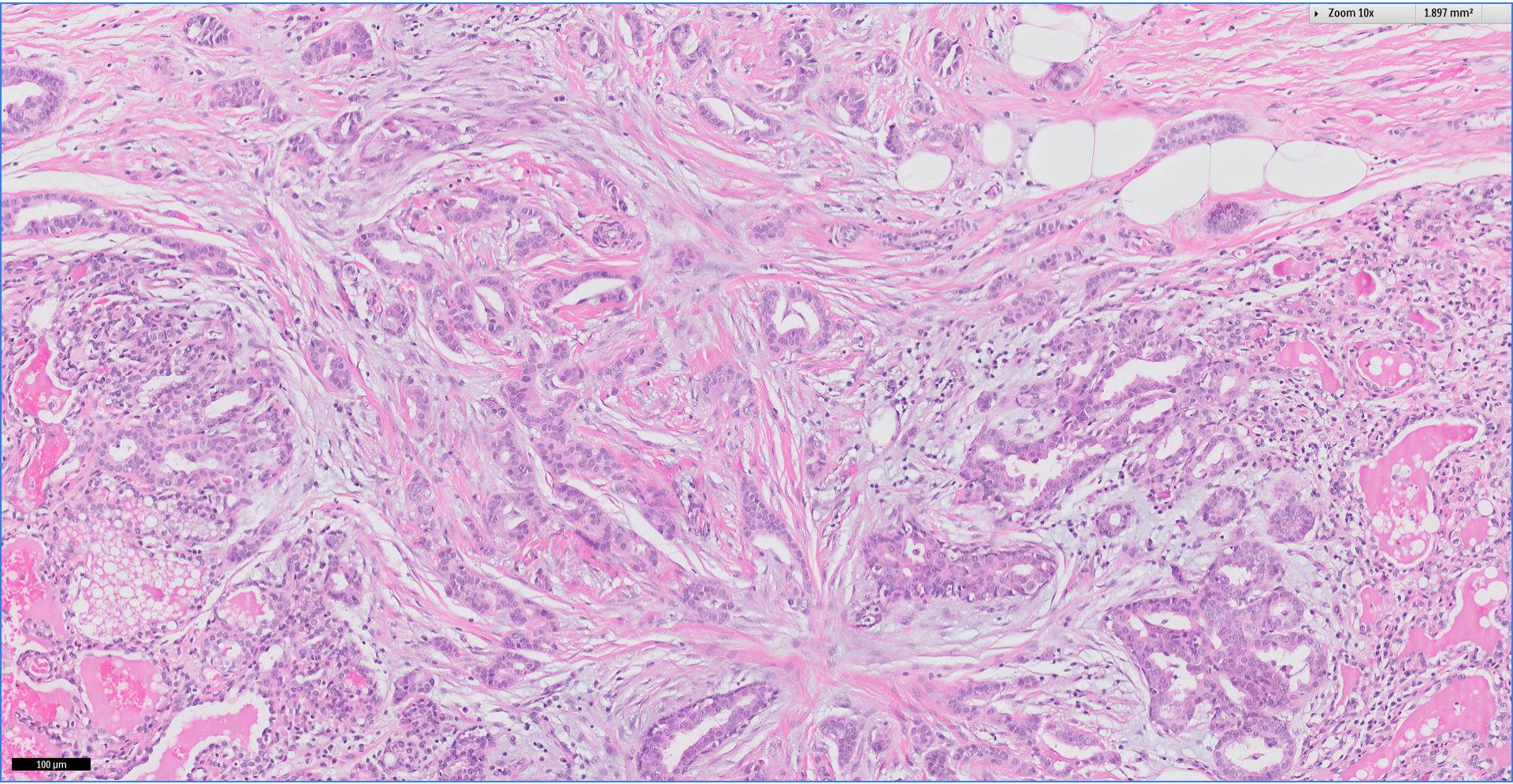
7.588 mm<sup>2</sup>



200  $\mu$ m

Zoom 10x

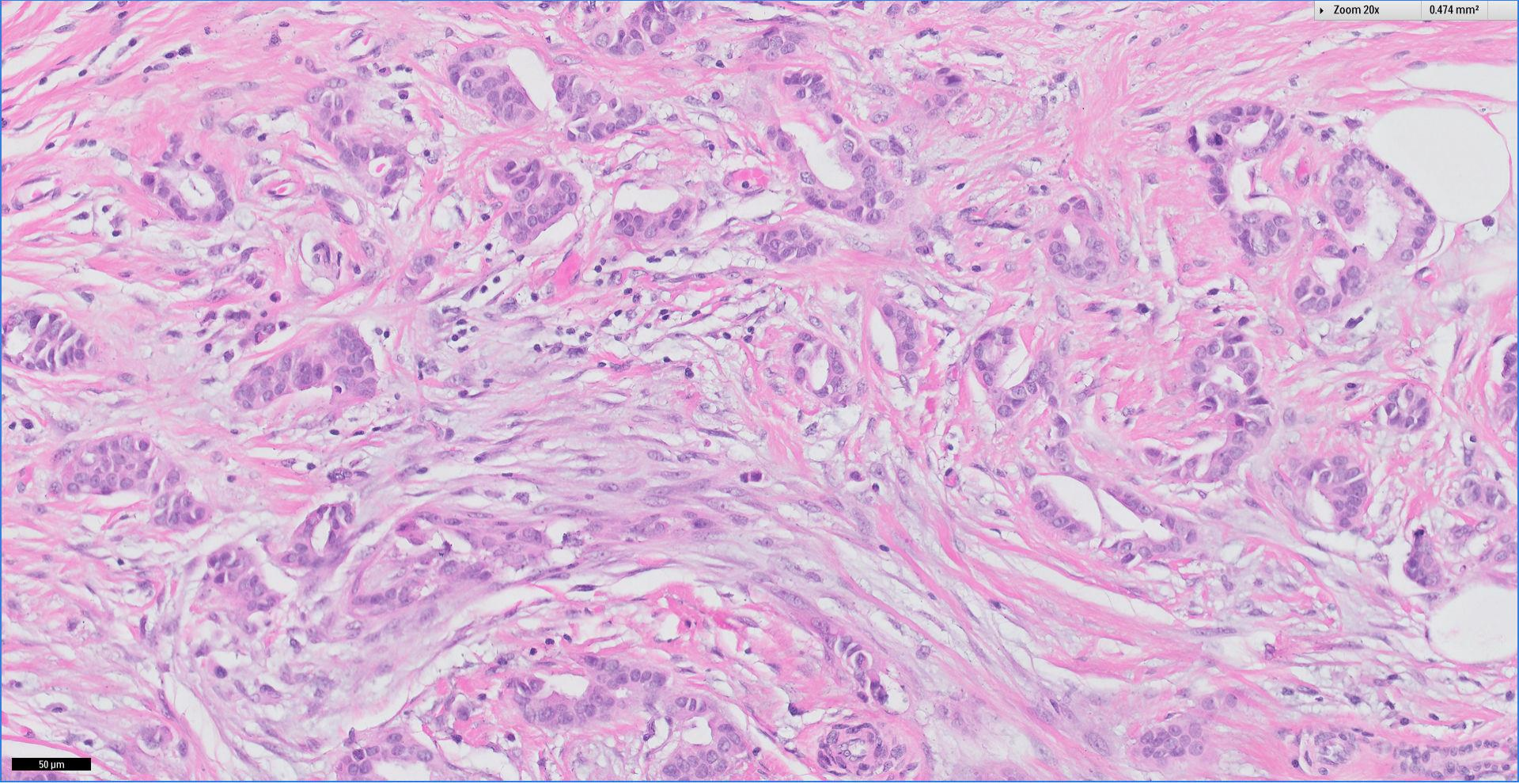
1.897 mm<sup>2</sup>



100  $\mu$ m

Zoom 20x

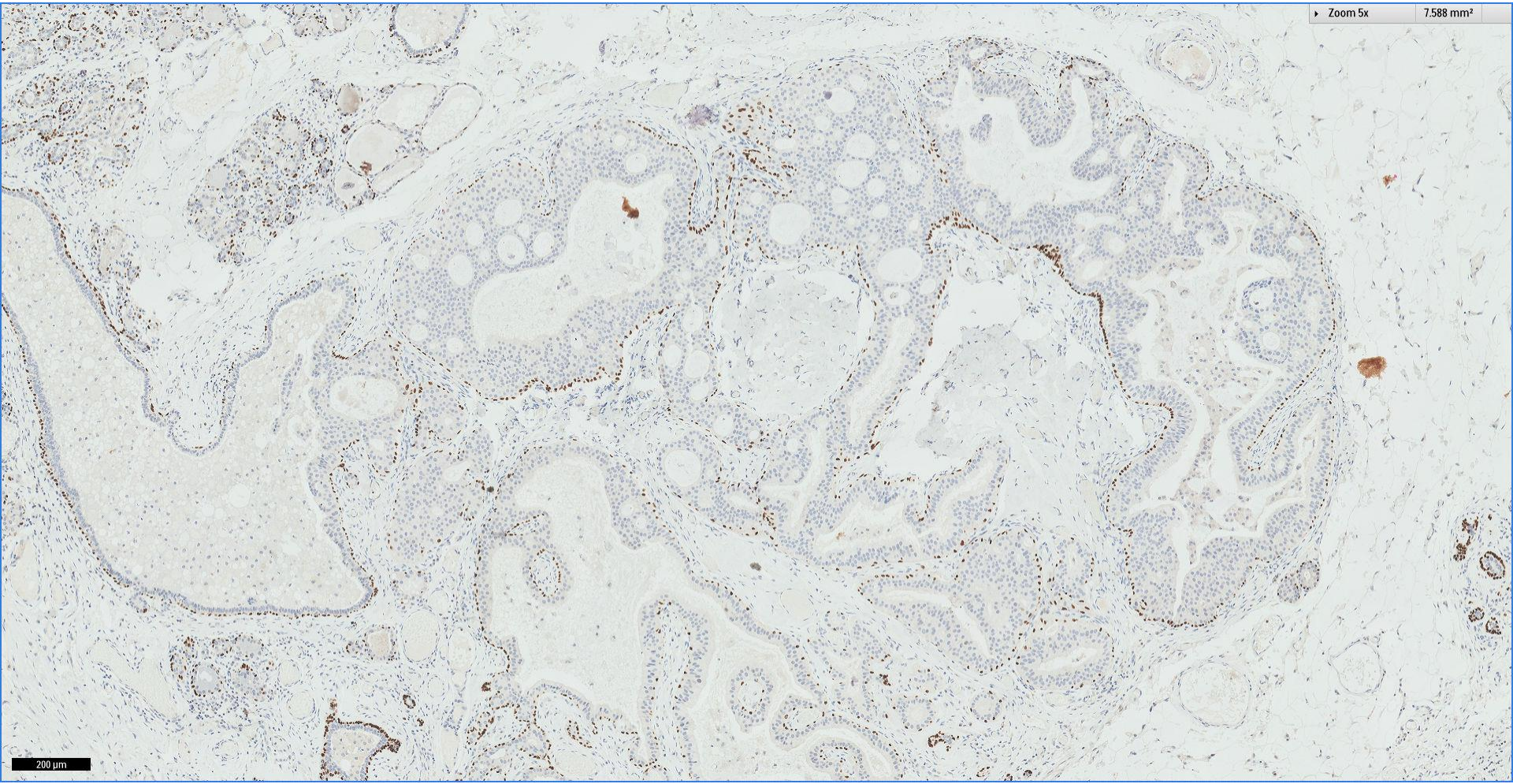
0.474 mm<sup>2</sup>



50  $\mu$ m

p63

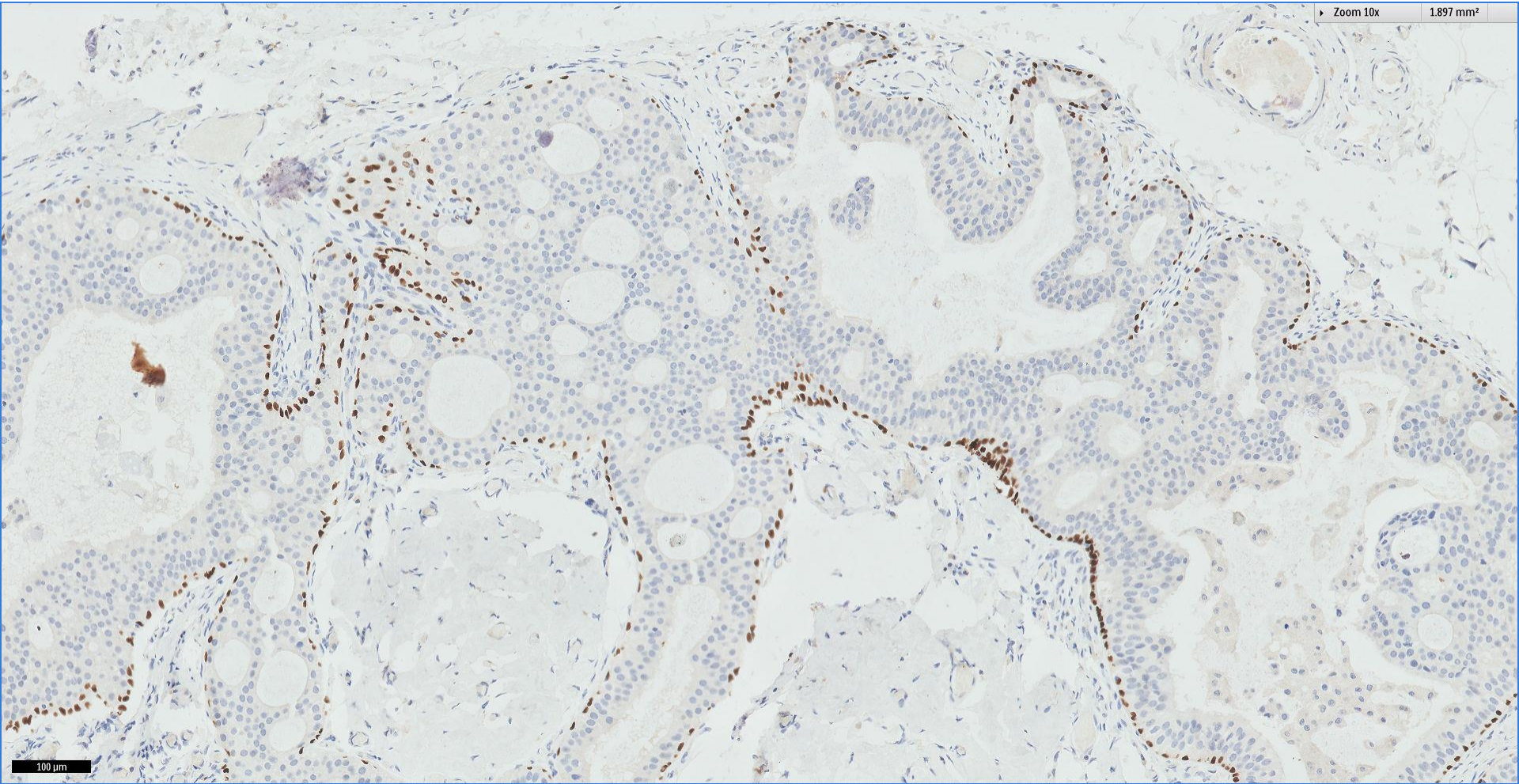
Zoom 5x 7.588 mm<sup>2</sup>



200  $\mu$ m

p63

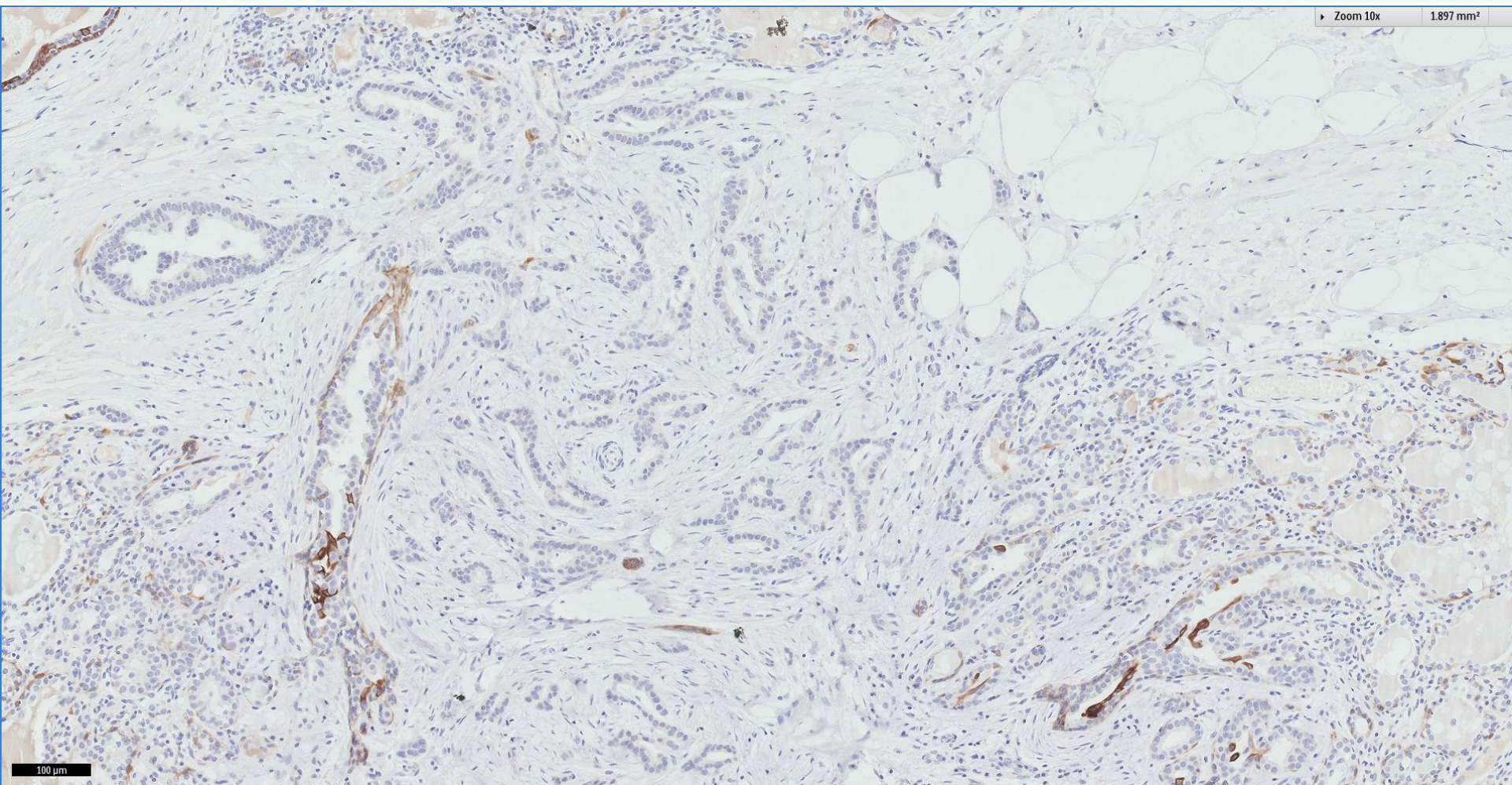
Zoom 10x 1.897 mm<sup>2</sup>



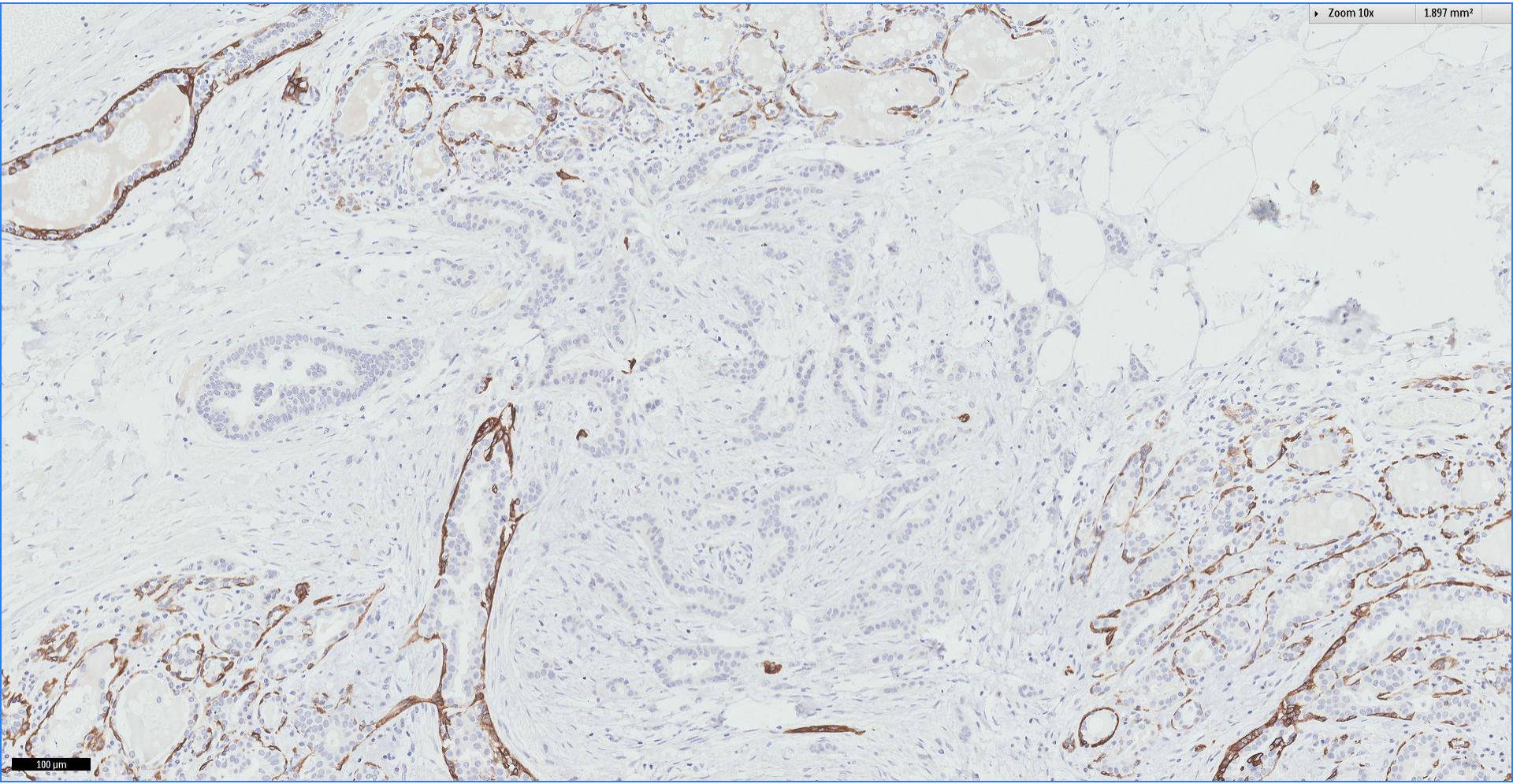
100 μm

CK5/6

Zoom 10x 1.897 mm<sup>2</sup>



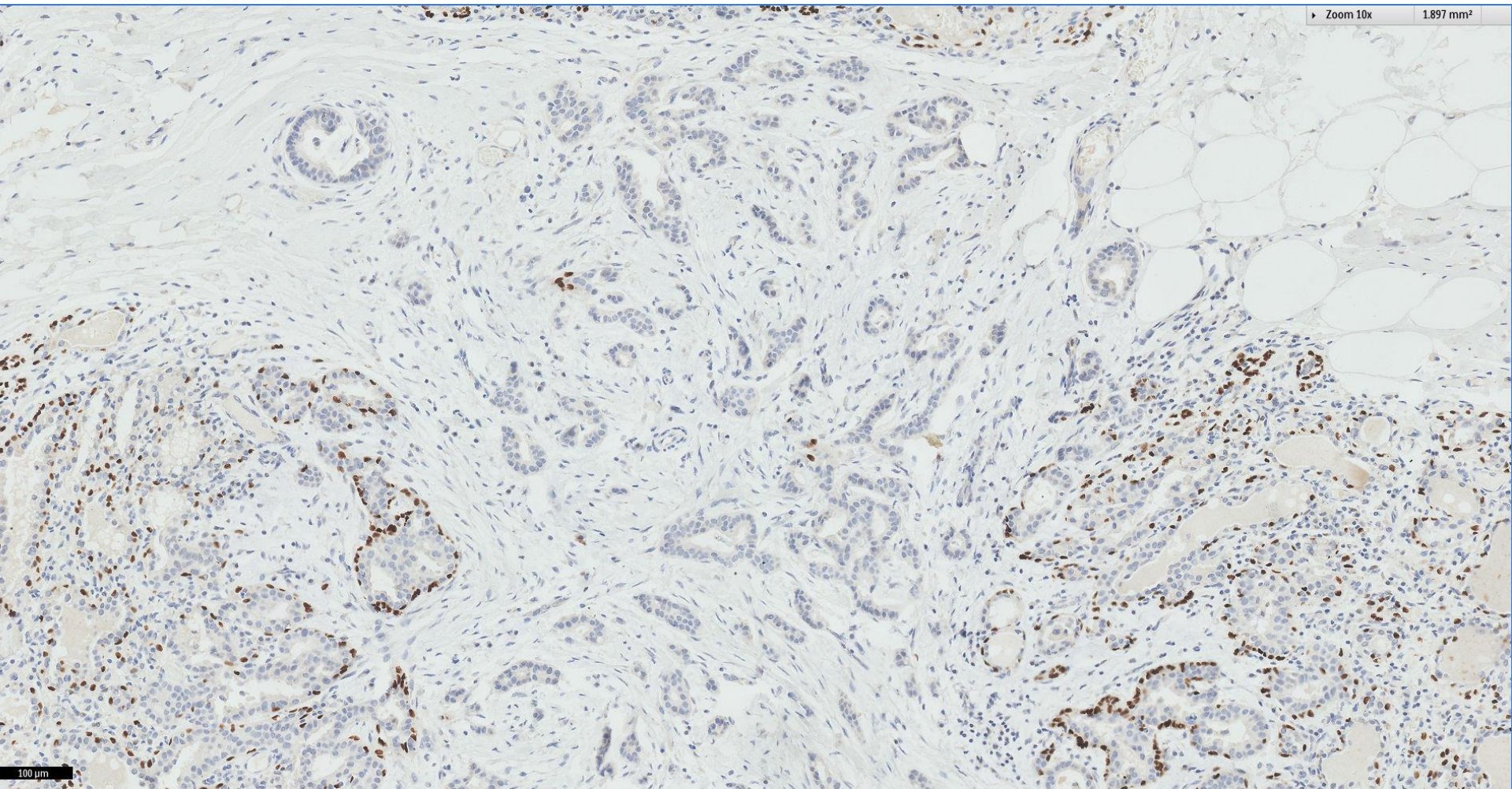
# CK14





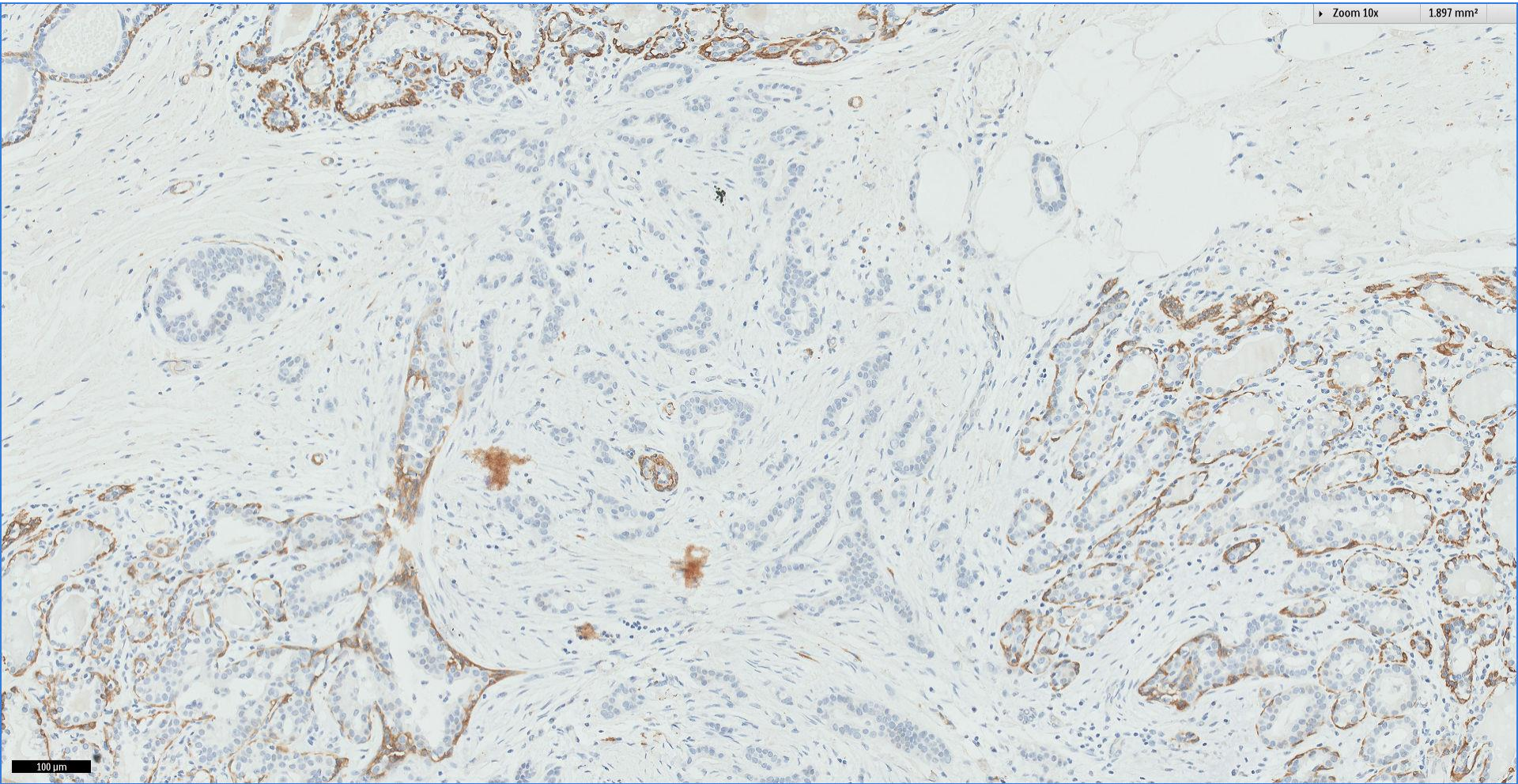
p63

Zoom 10x 1.897 mm<sup>2</sup>



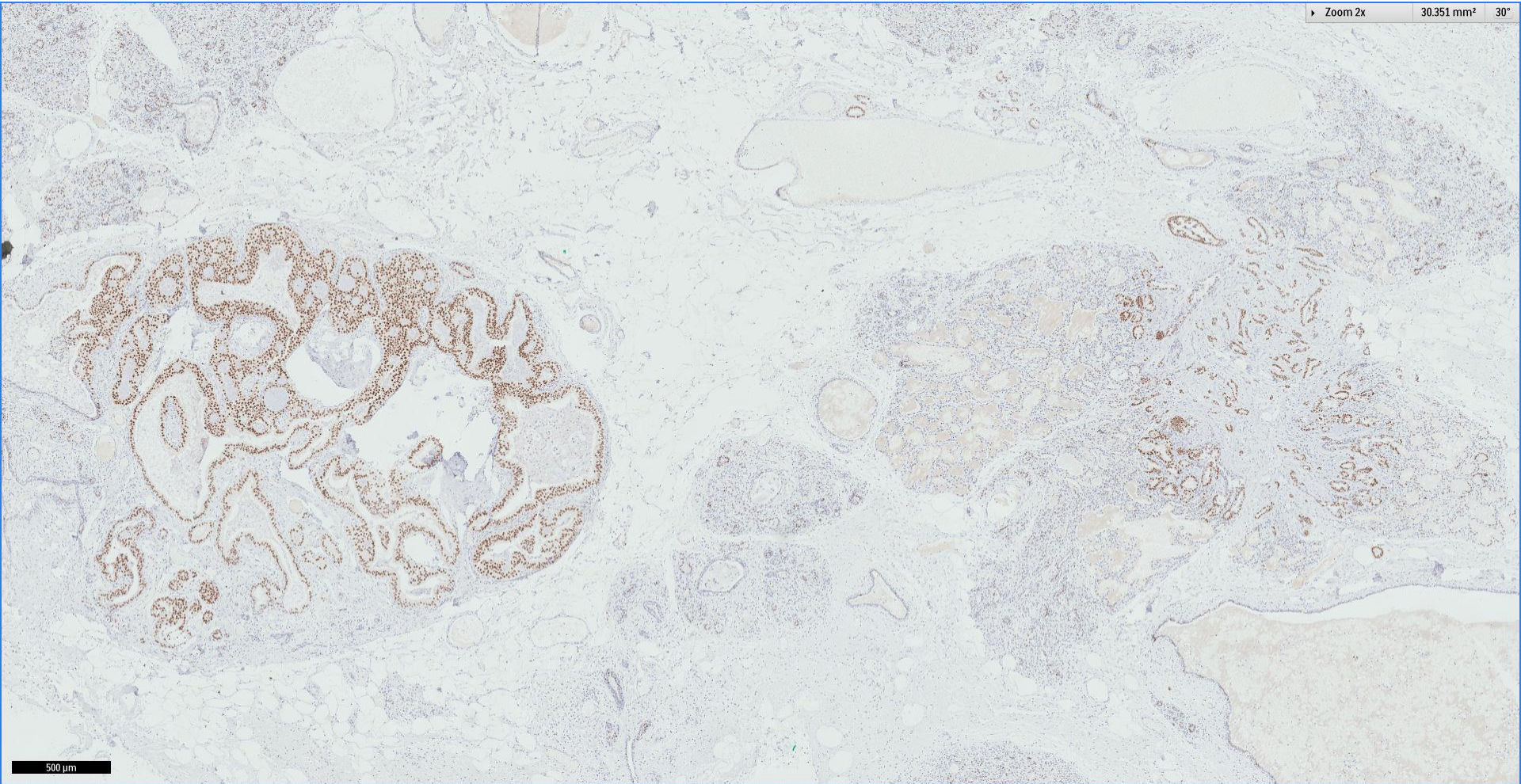
100 μm

# SMMS



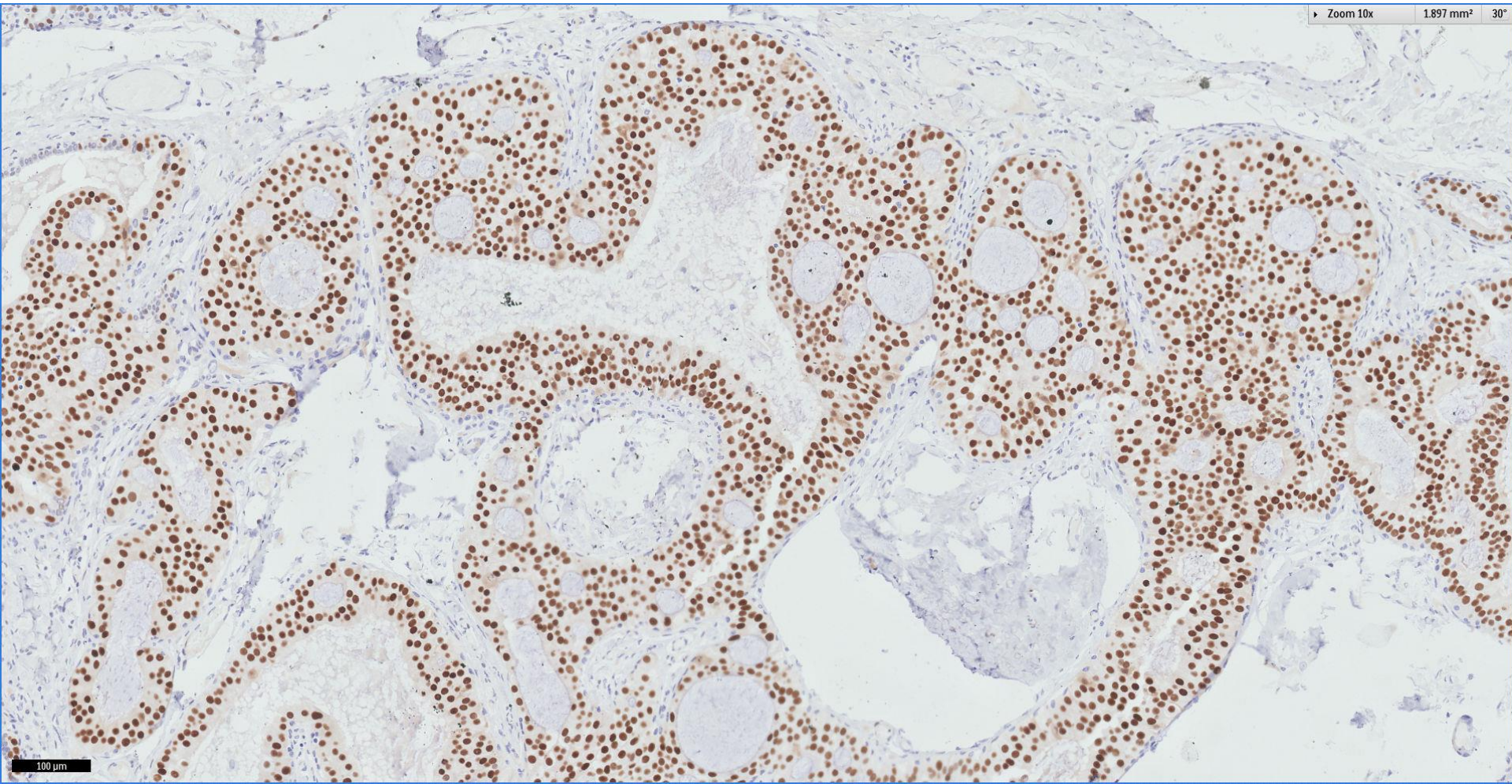
ER

Zoom 2x 30.351 mm<sup>2</sup> 30°



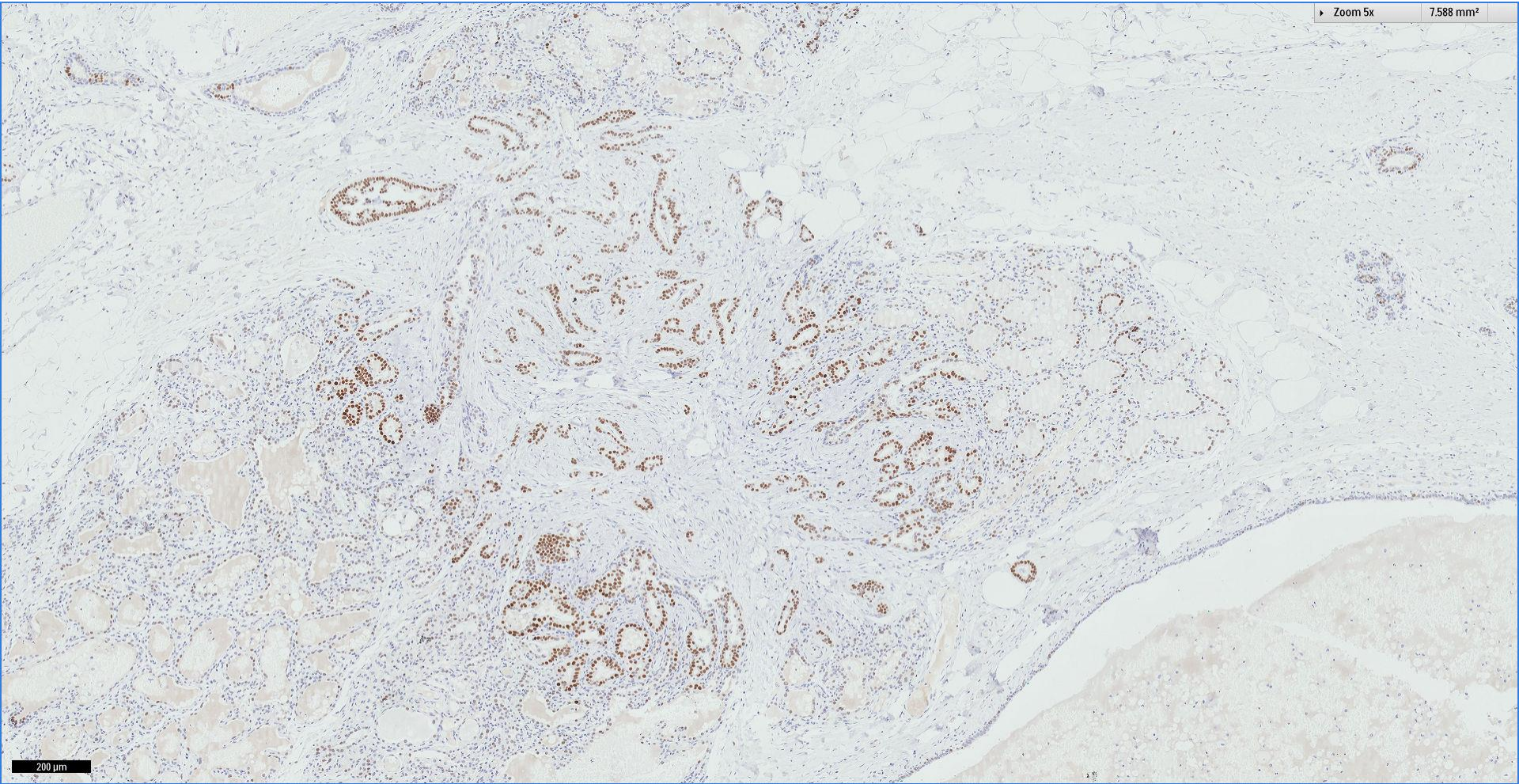
500 μm

ER



ER

Zoom 5x 7.588 mm<sup>2</sup>

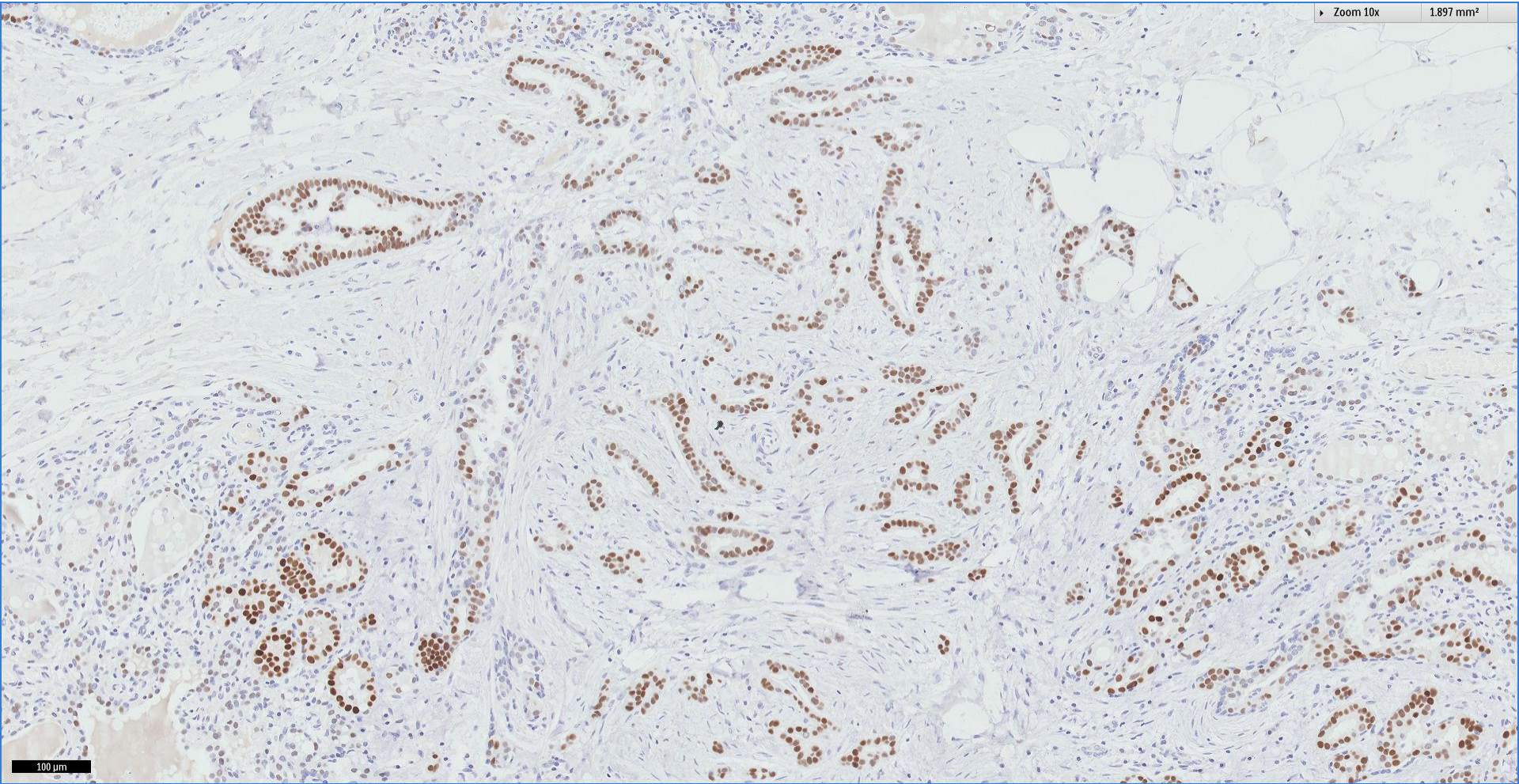


200  $\mu$ m

18

ER

Zoom 10x 1.897 mm<sup>2</sup>



100 μm

# Diagnosis:

## Right breast, completion mastectomy ~

Residual focus of invasive ductal carcinoma, 3mm.

ER positive, PR negative, cerbB2 negative.

Ductal carcinoma in situ, intermediate nuclear grade, without necrosis or calcifications.

Secretory changes consistent with lactational state.

Cavity wall.



Singapore  
General Hospital

SingHealth

Division of Pathology



SingHealth DukeNUS  
ACADEMIC MEDICAL CENTRE

PATHOLOGY



IAP

International Academy of Pathology  
Singapore Division

 Breast  
Pathology  
Course 2017

