

## Case 1

58 year old Chinese female, underwent a left mastectomy with sentinel lymph node biopsy after a core biopsy of a left breast lump confirmed invasive cancer.

Section from tumour in the left mastectomy specimen.



Singapore  
General Hospital

SingHealth

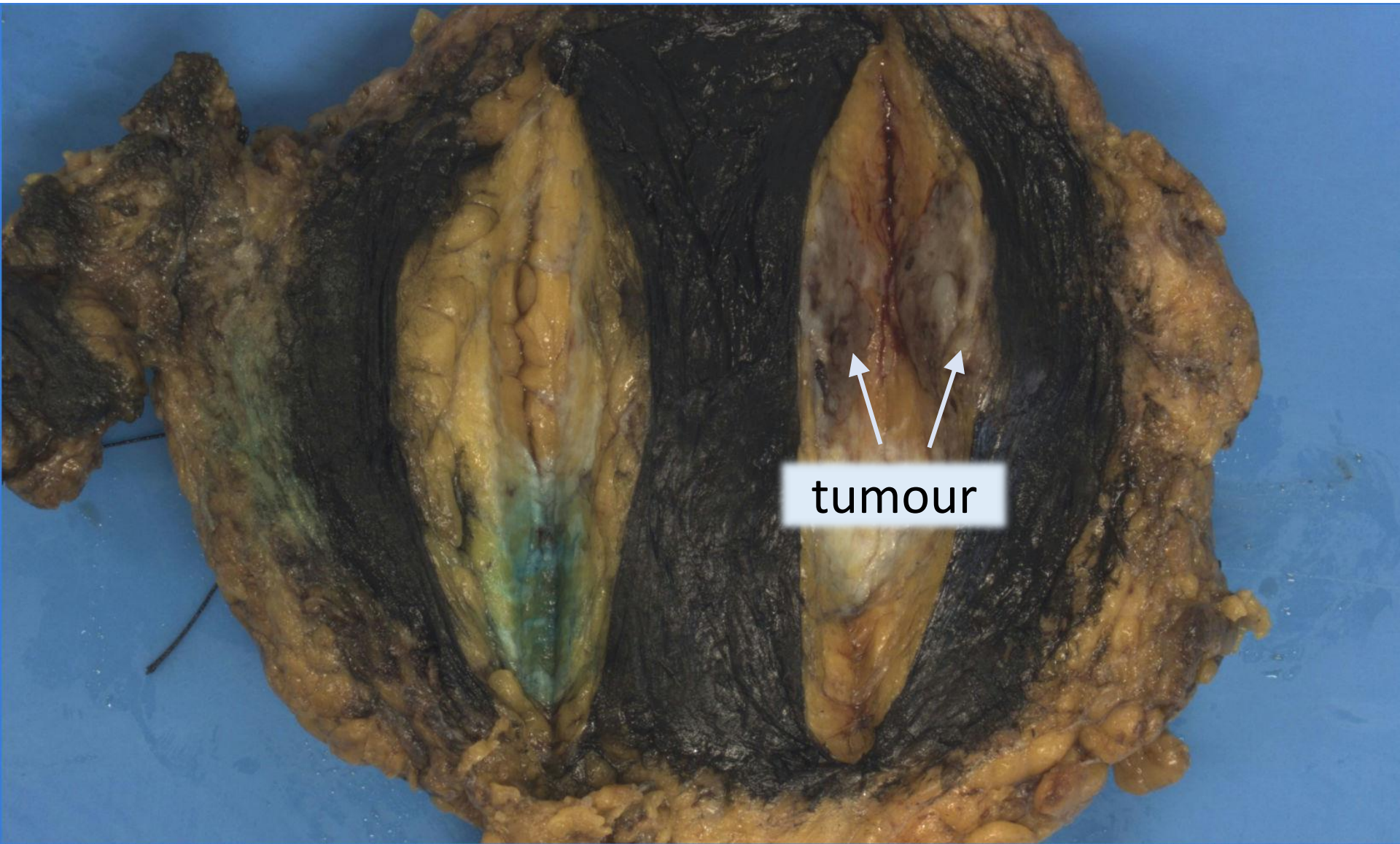
Division of Pathology



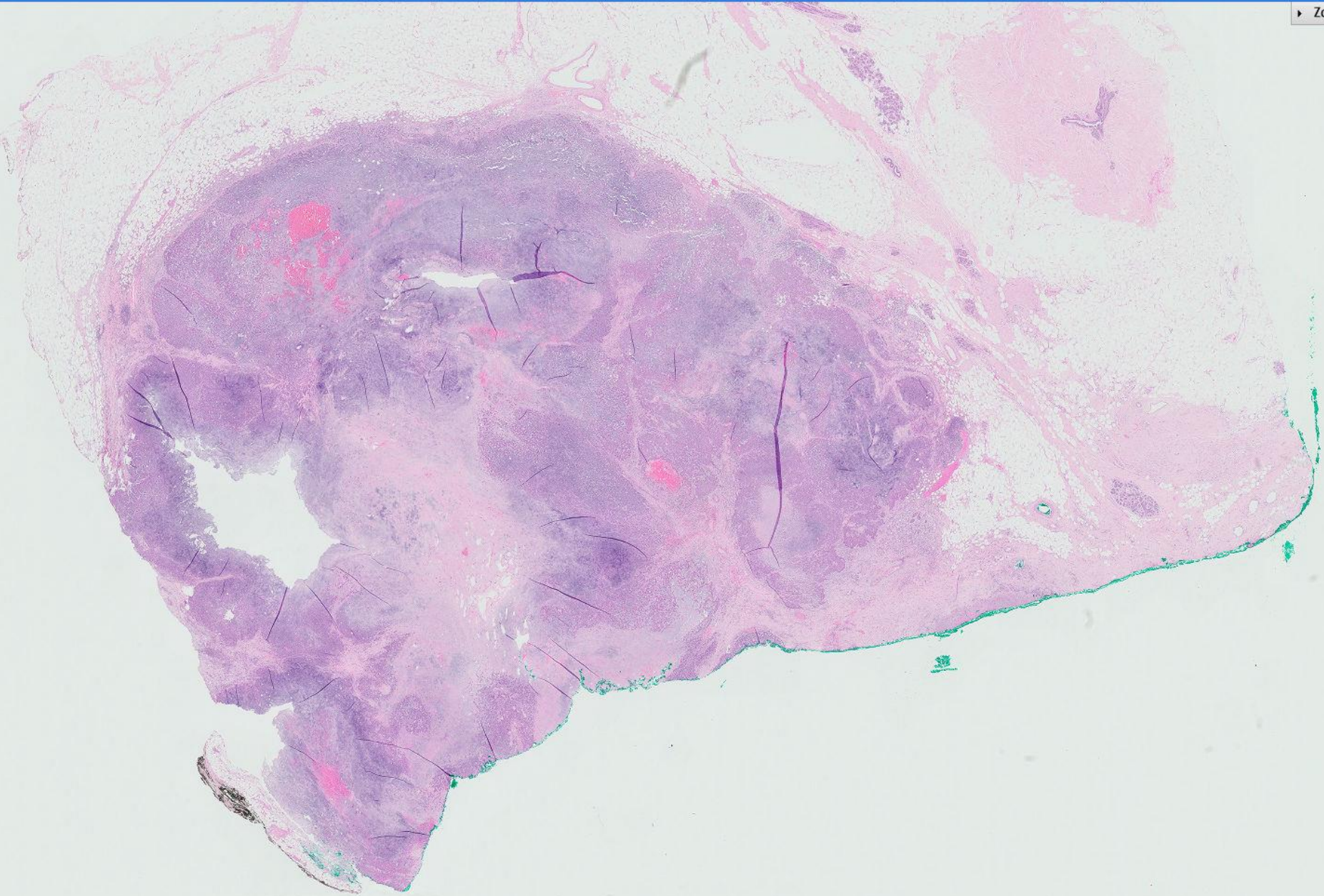
**PATHOLOGY**

**IAP**

International Academy of Pathology  
Singapore Division

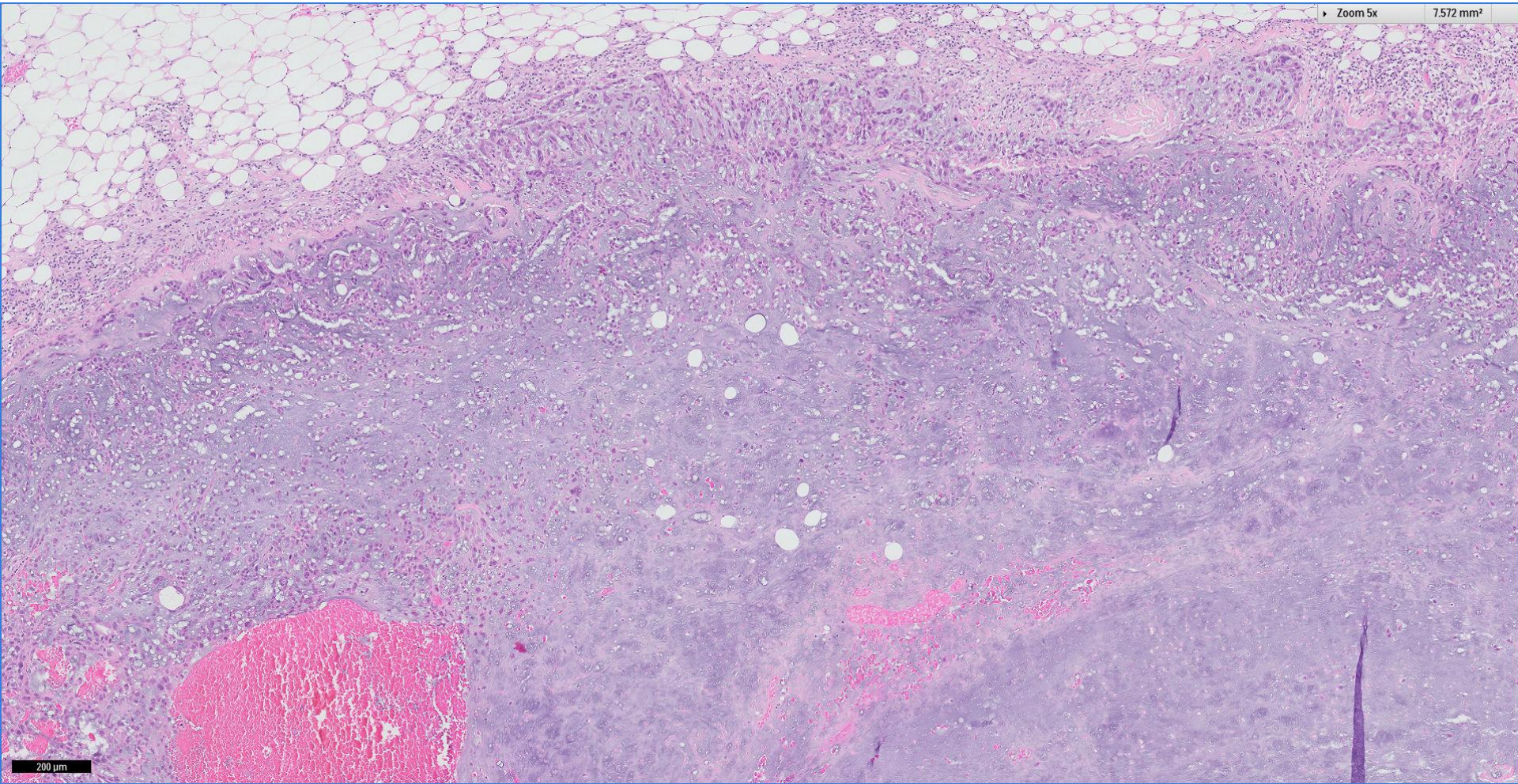


tumour



Zoom 5x

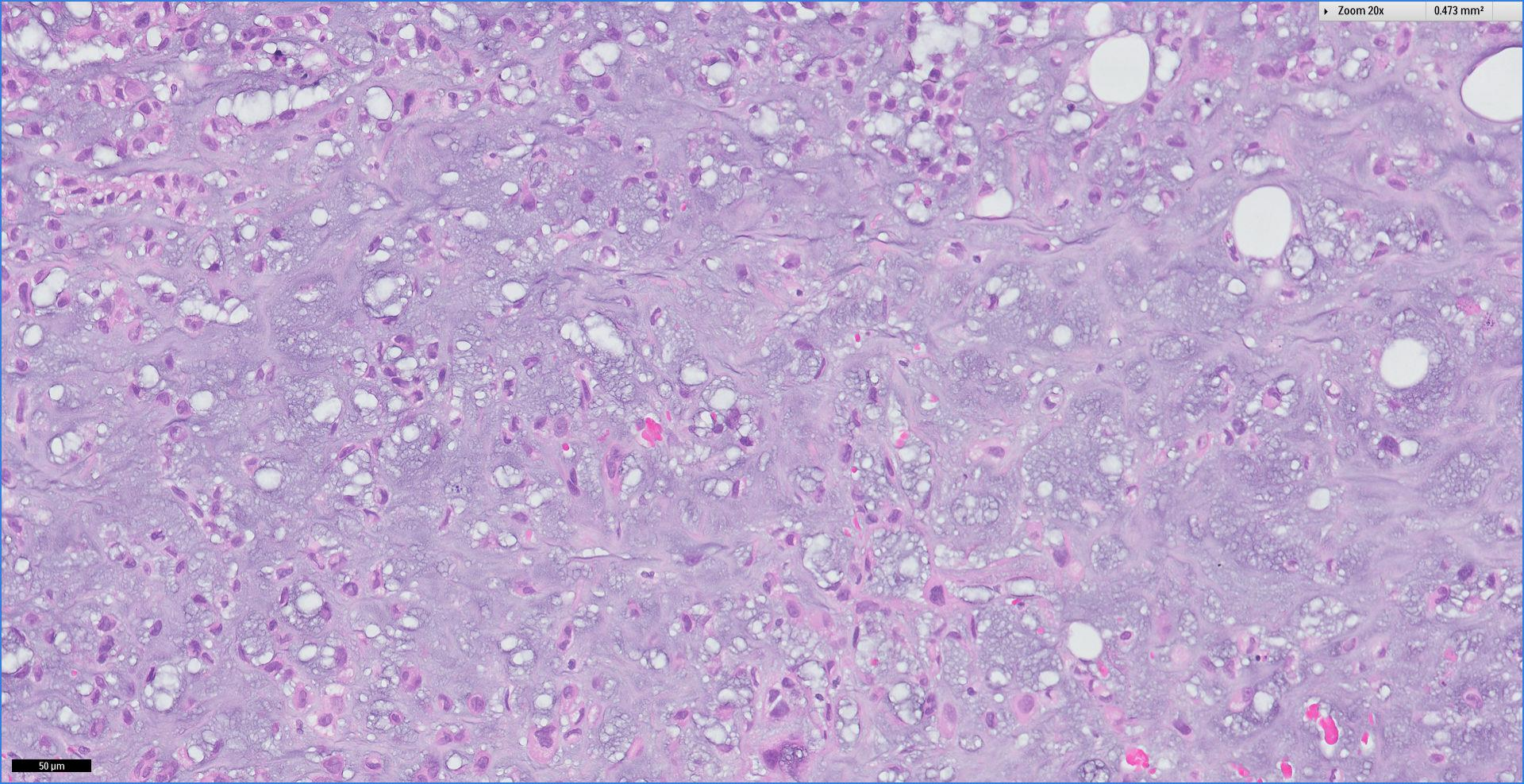
7.572 mm<sup>2</sup>



200 μm

Zoom 20x

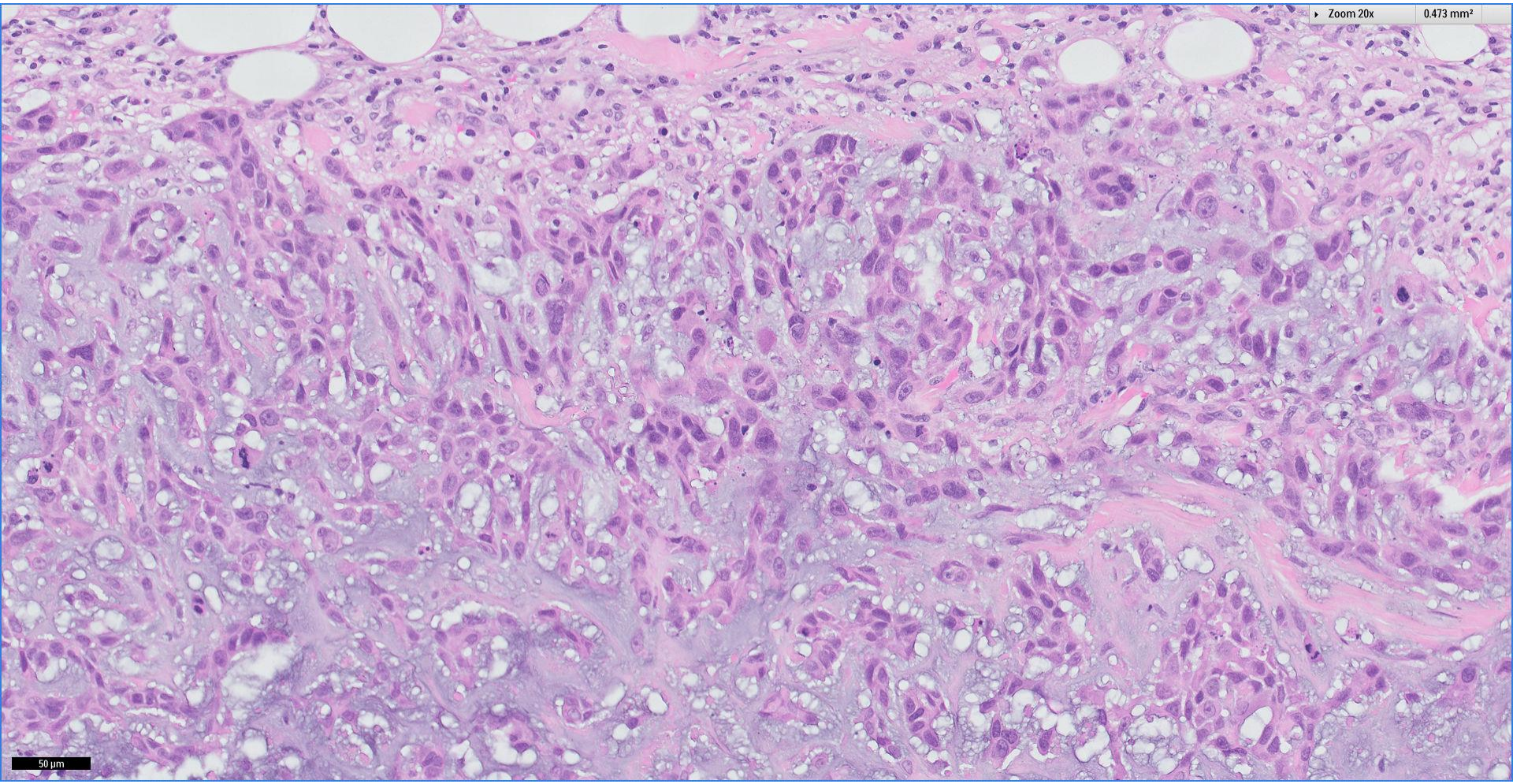
0.473 mm<sup>2</sup>



50 μm

Zoom 20x

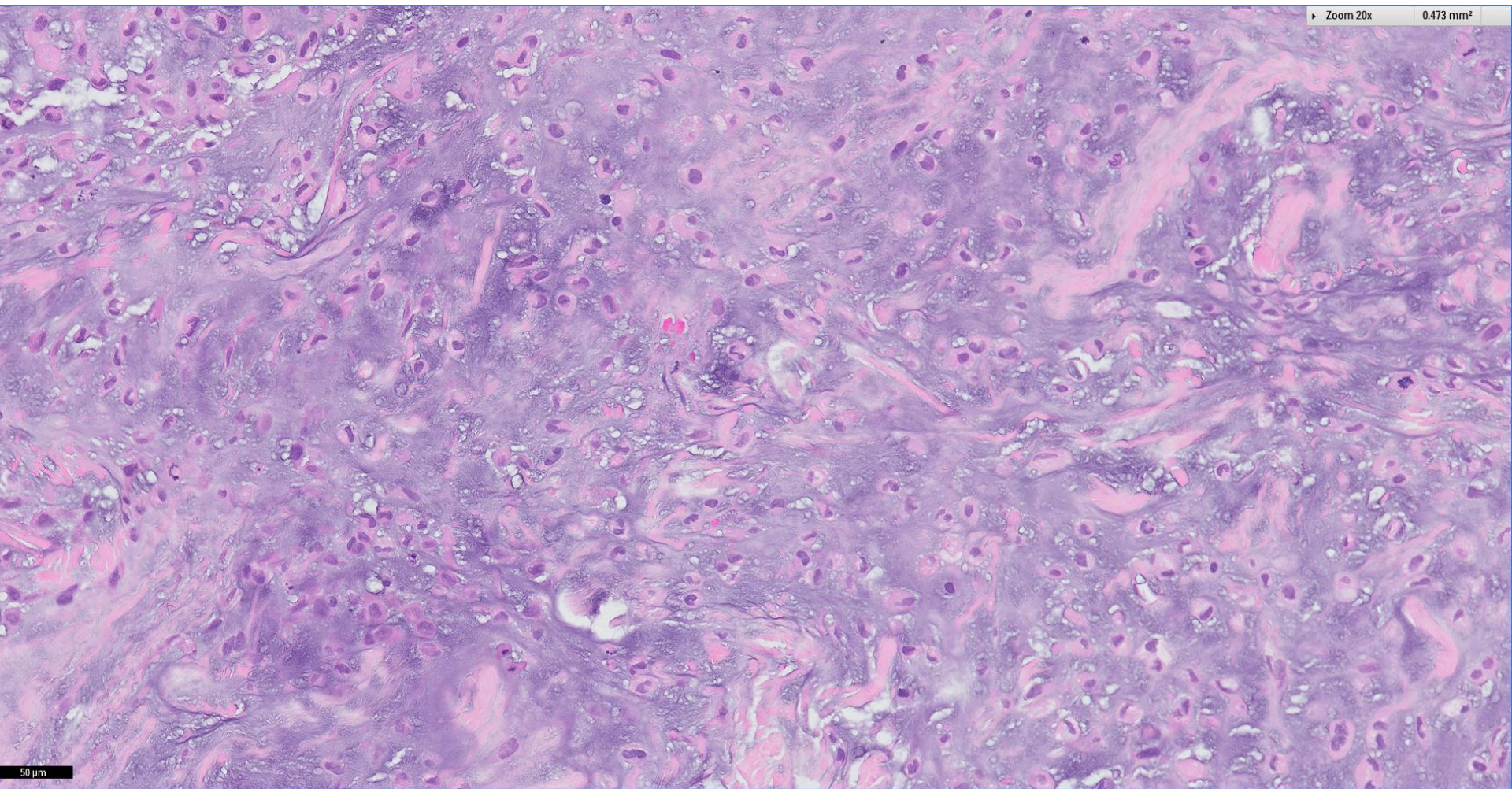
0.473 mm<sup>2</sup>



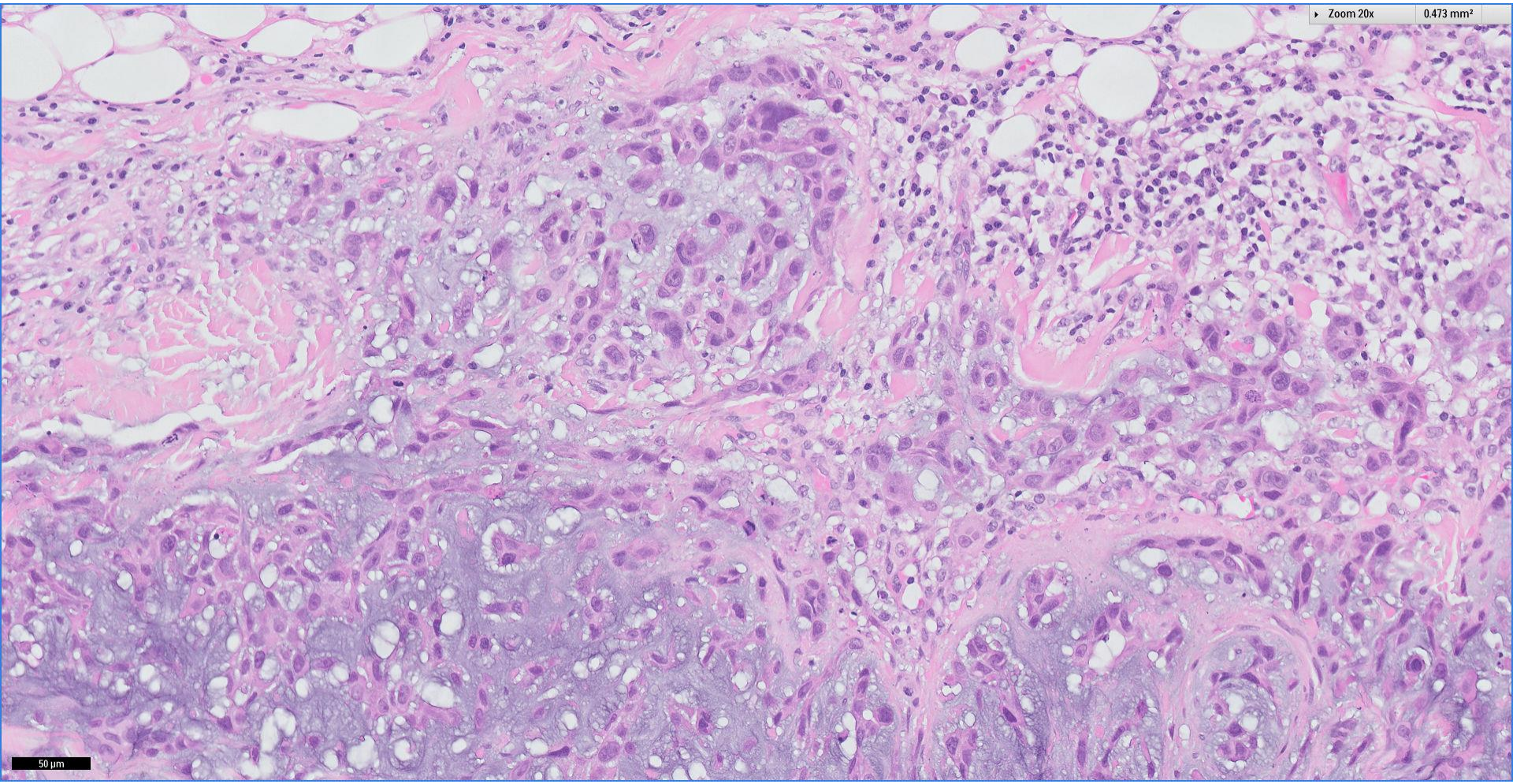
50 μm

Zoom 20x

0.473 mm<sup>2</sup>



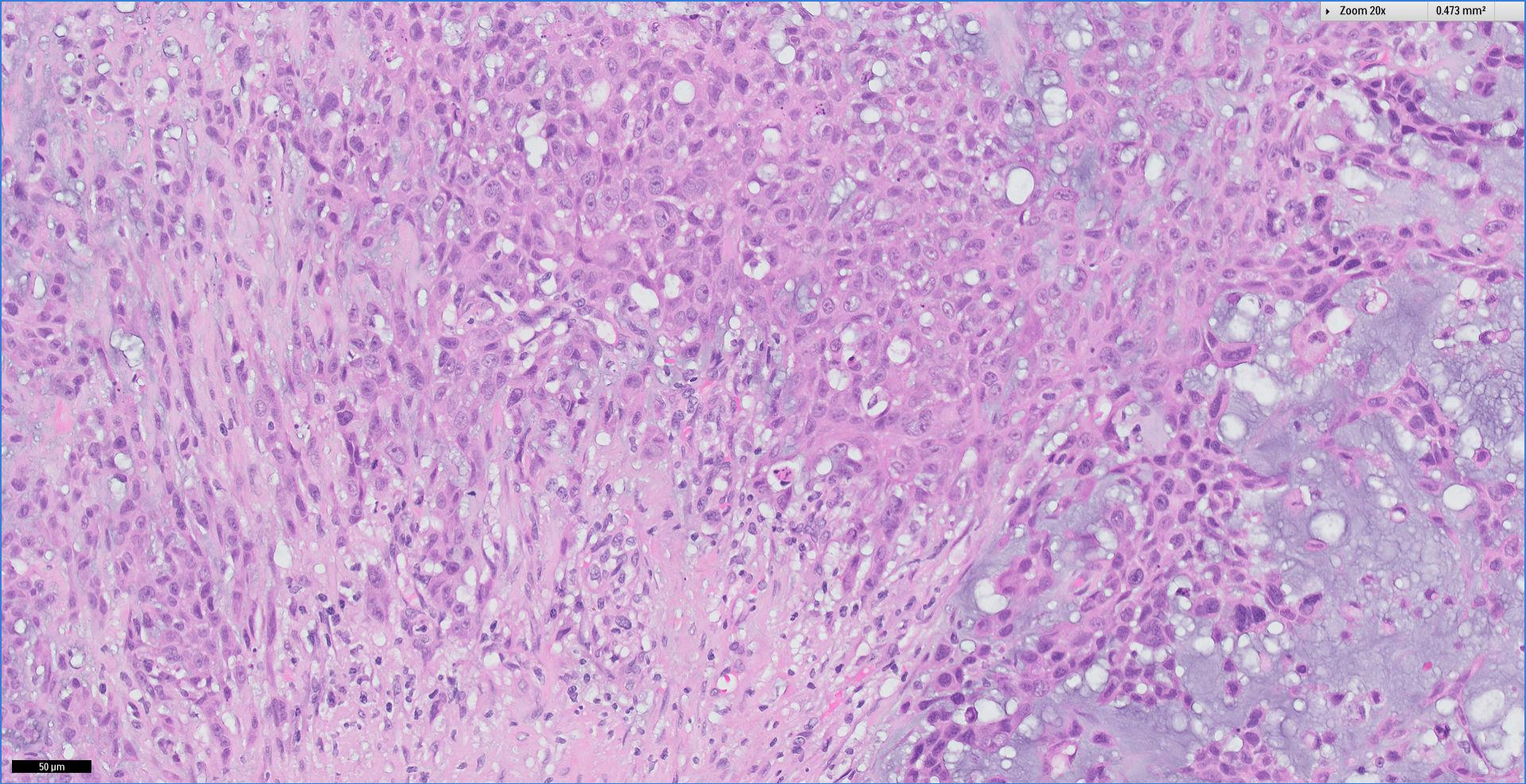
50 μm





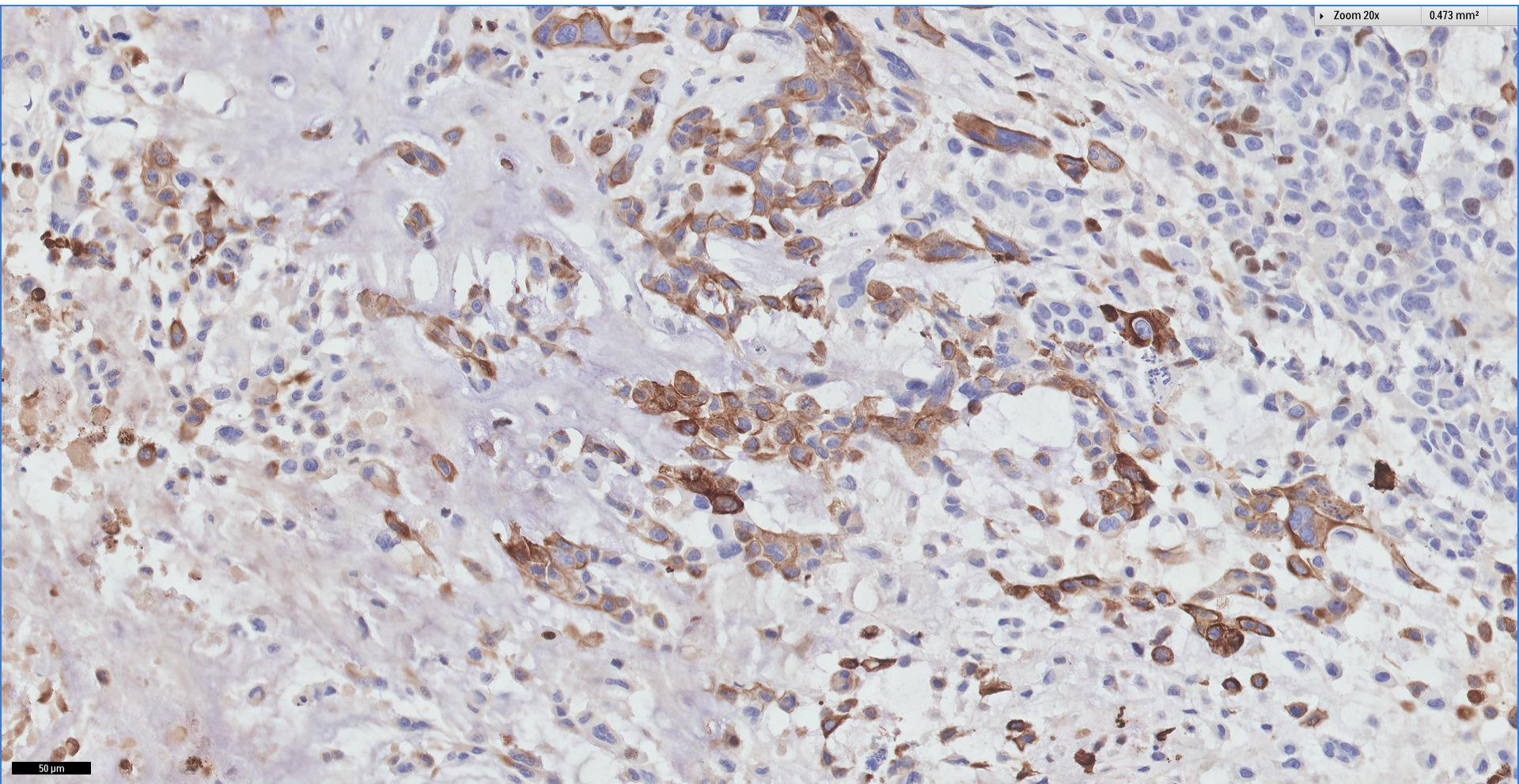
Zoom 20x

0.473 mm<sup>2</sup>

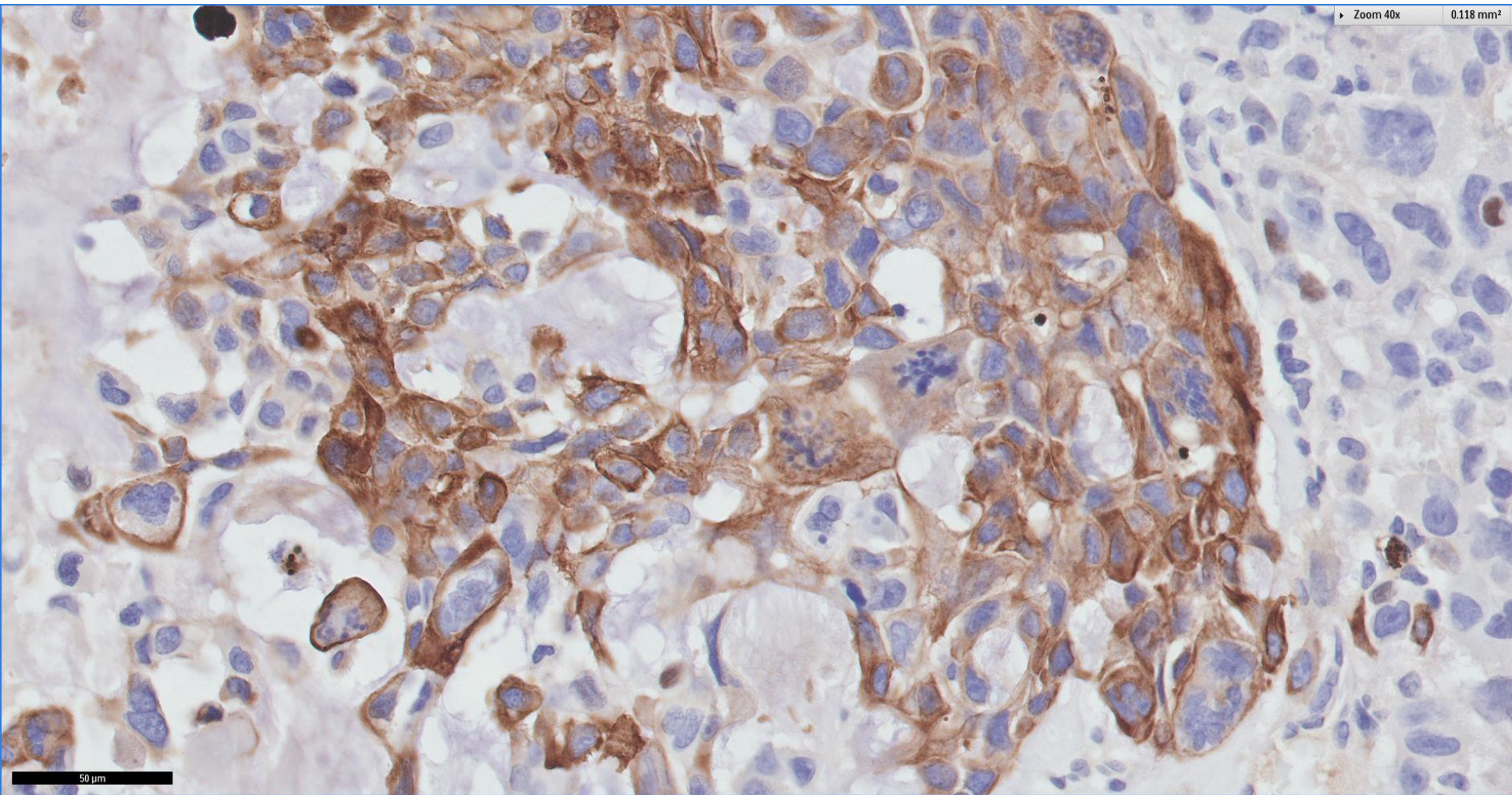


50 μm

CK5/6

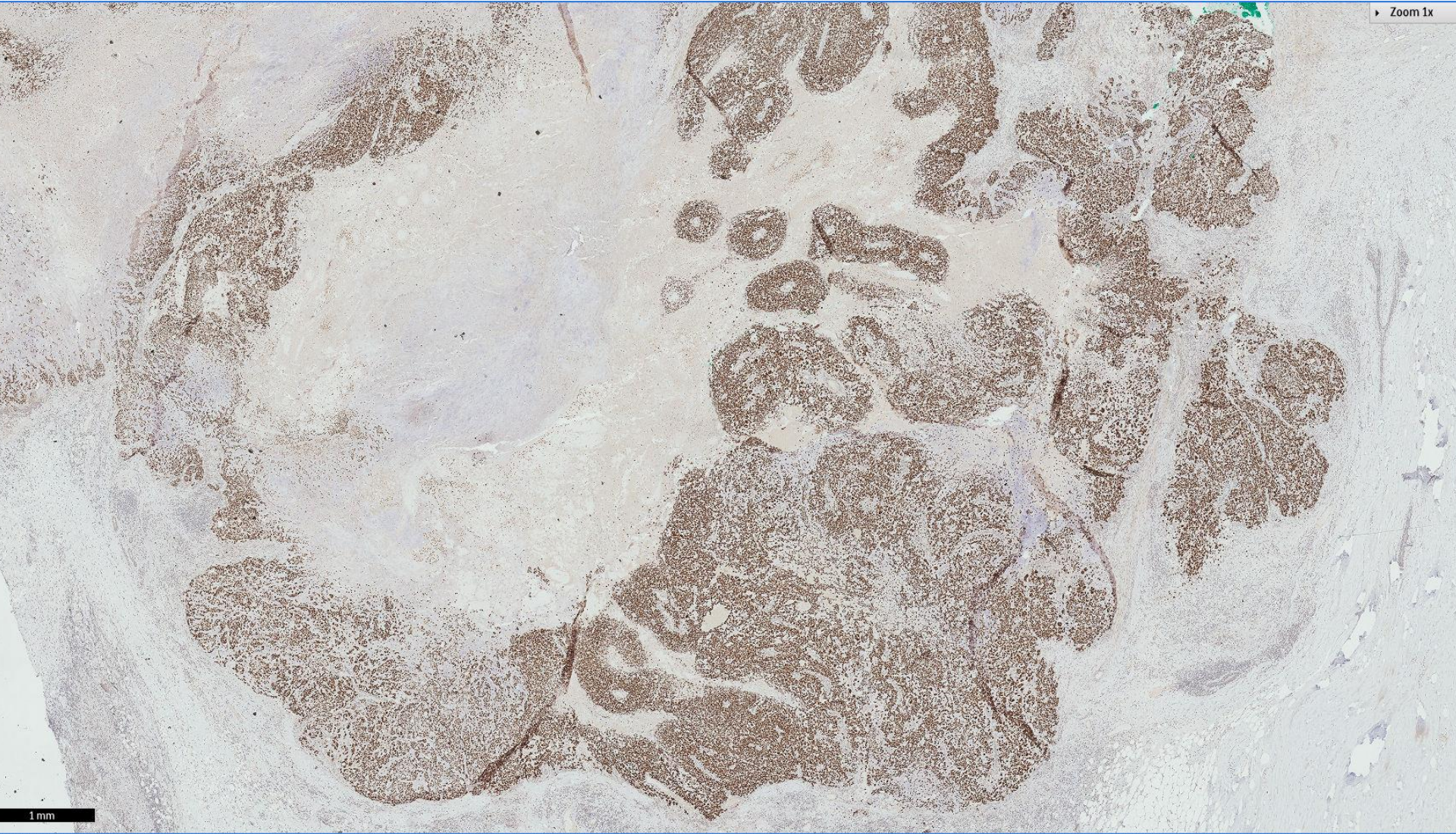


CK5/6



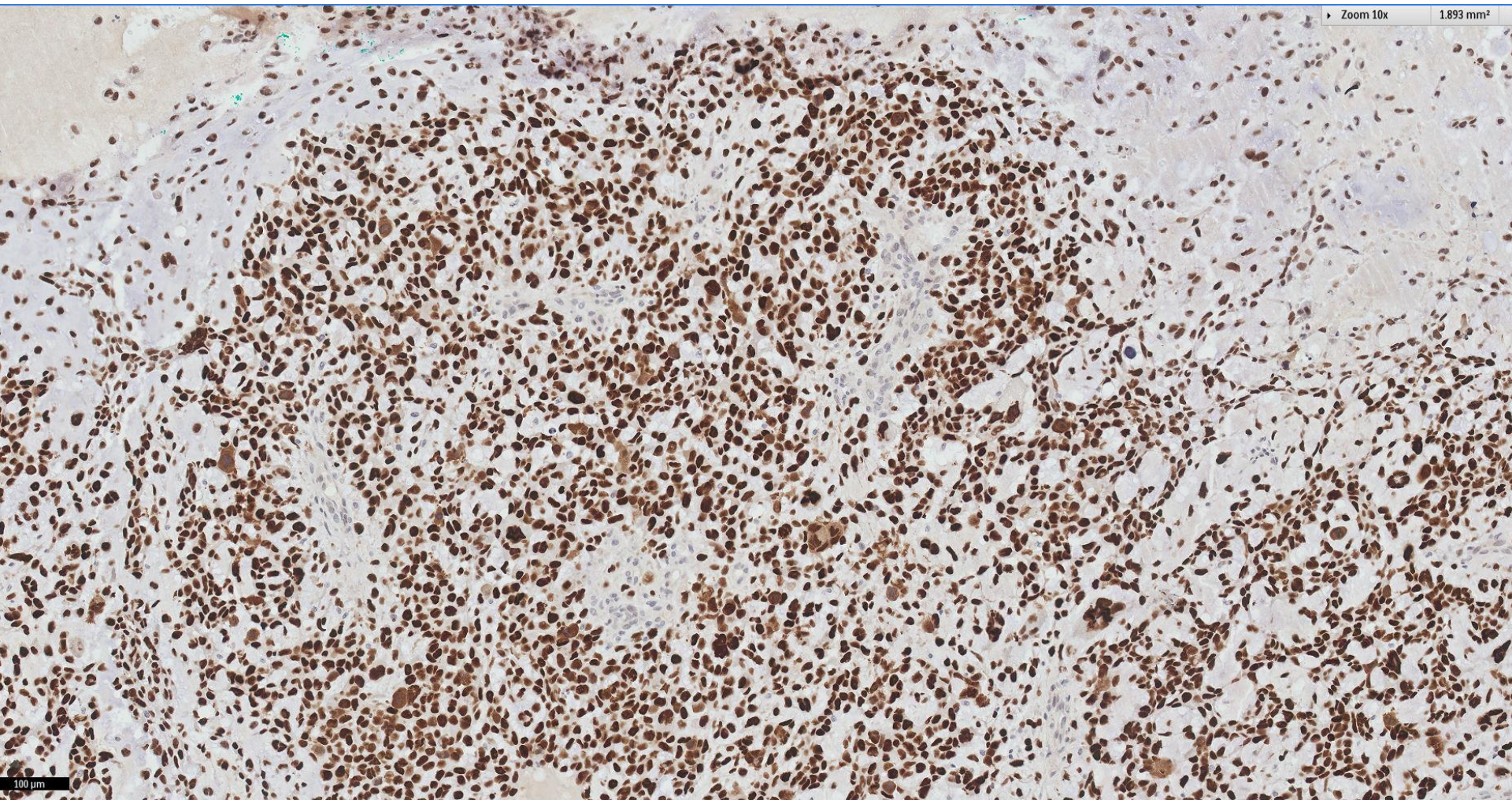
p63

► Zoom 1x

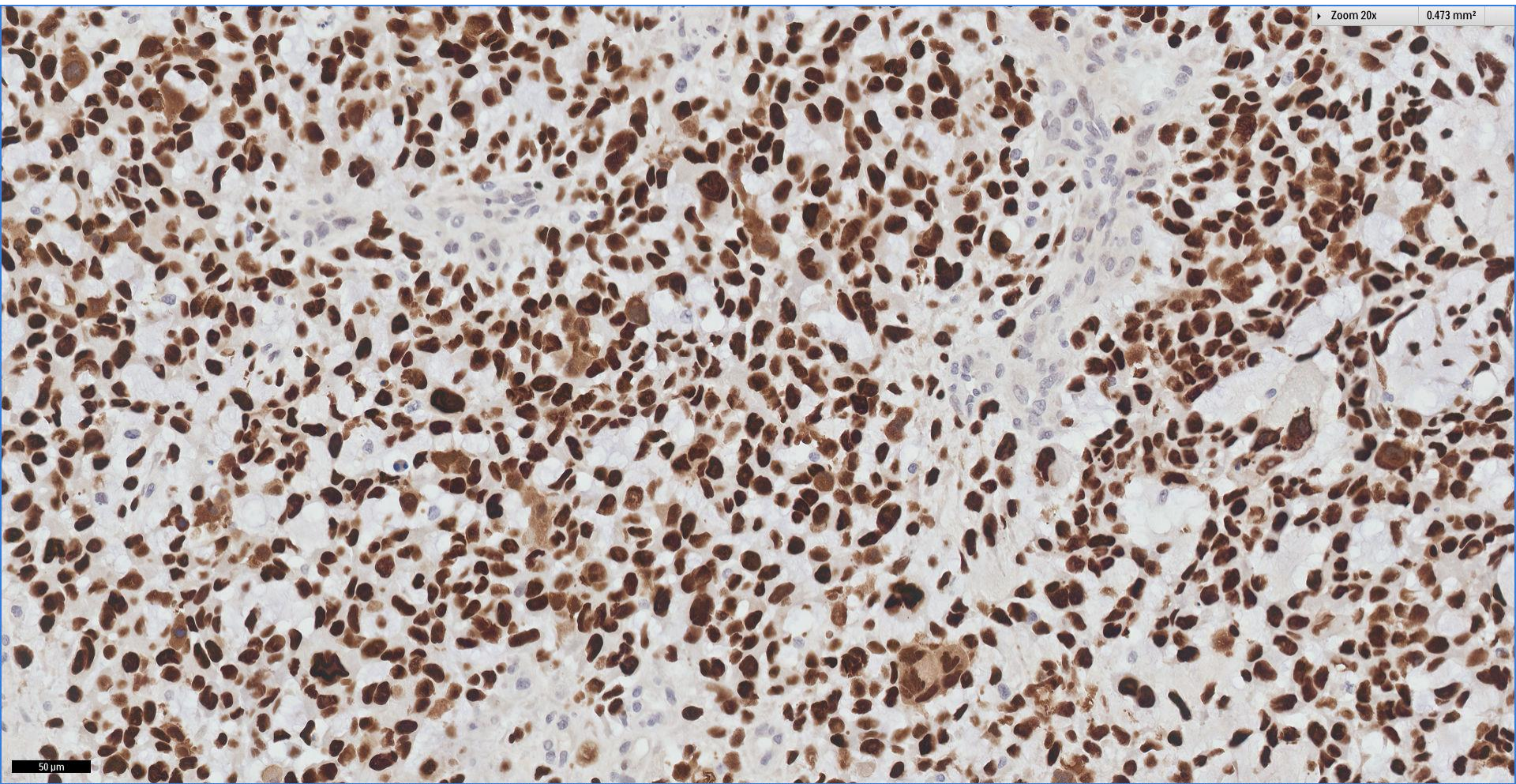


1 mm

p63



p63



# Diagnosis:

Metaplastic carcinoma  
(with chondromyxoid elements)



Singapore  
General Hospital

SingHealth

Division of Pathology



**PATHOLOGY**



# Metaplastic Carcinoma with Mesenchymal Differentiation

- In this category of metaplastic carcinoma, malignant osteoid, chondroid, and chondromyxoid elements are present.
- Liposarcoma is an uncommon heterologous component in metaplastic carcinoma, being more commonly observed in malignant phyllodes tumours.



Singapore  
General Hospital

SingHealth

Division of Pathology



SingHealth DukeNUS  
ACADEMIC MEDICAL CENTRE

PATHOLOGY

The logo for the International Academy of Pathology, featuring the letters 'IAP' in a bold, blue, sans-serif font.

International Academy of Pathology  
Singapore Division



 Breast  
Pathology  
Course 2017

