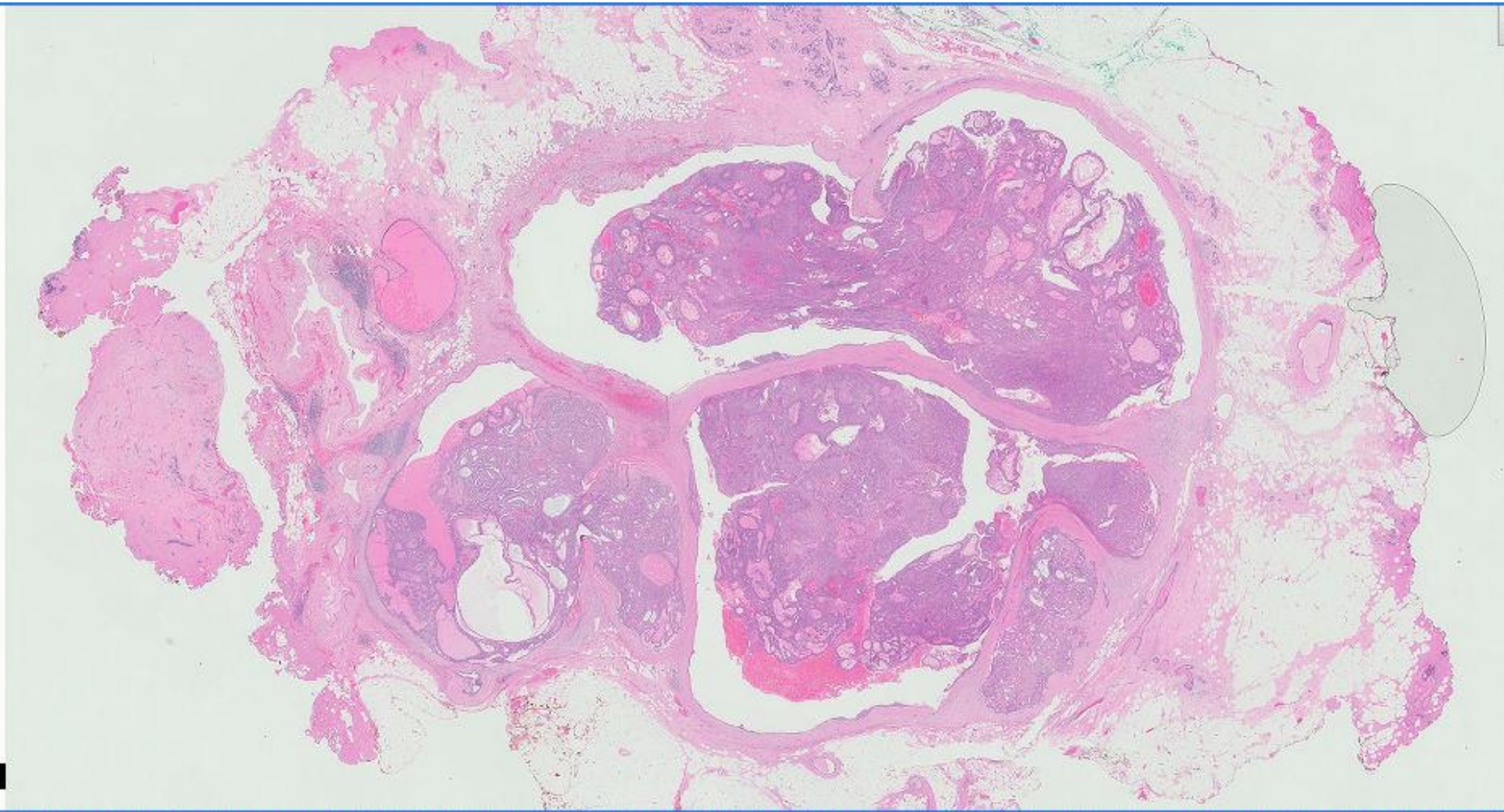
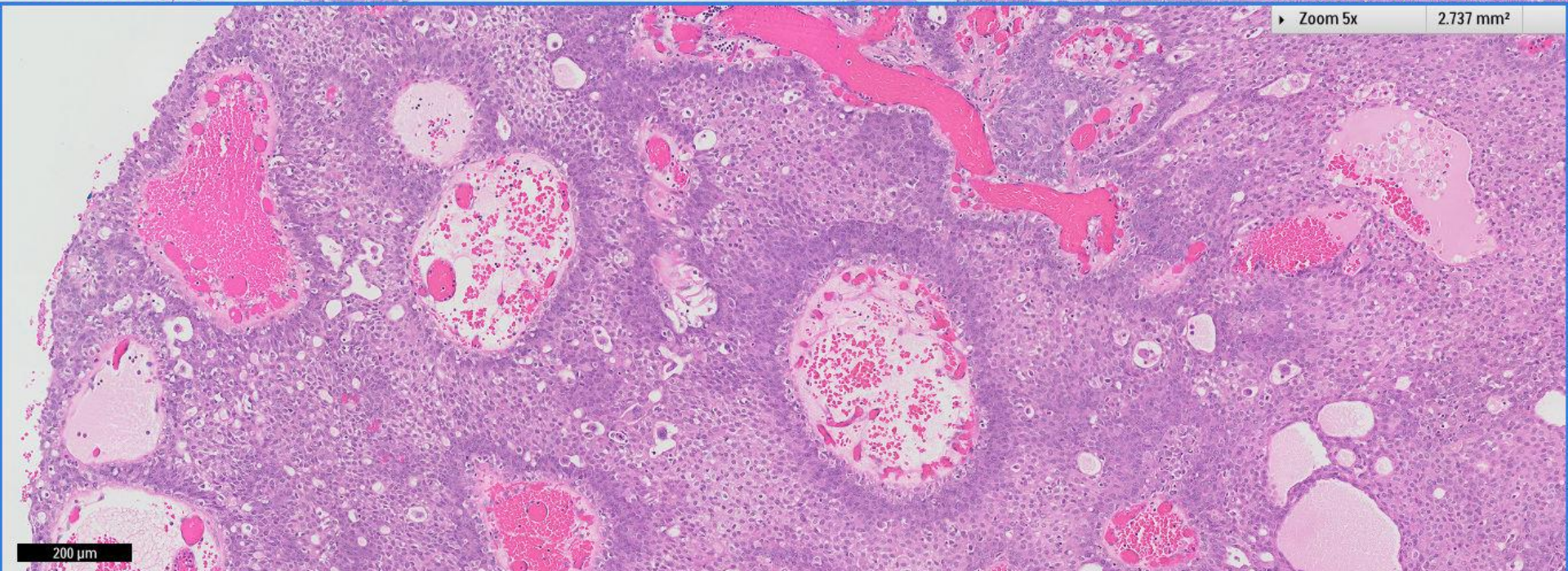
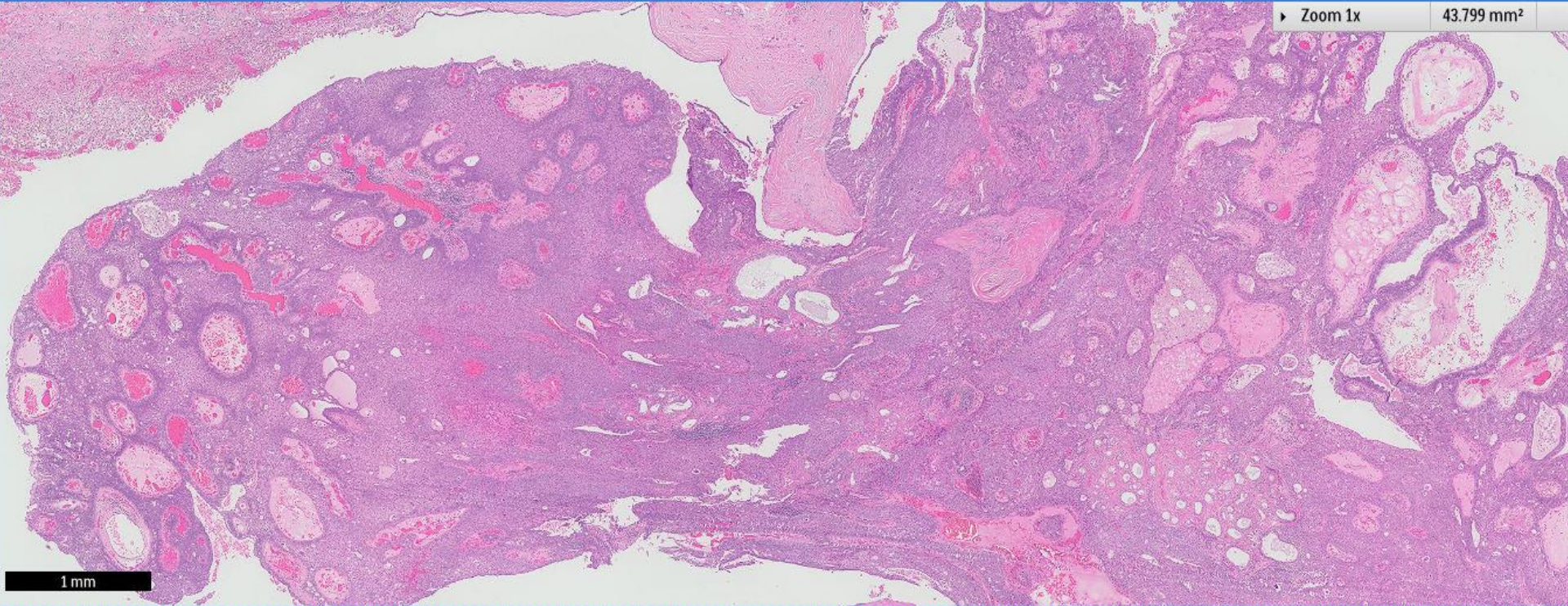


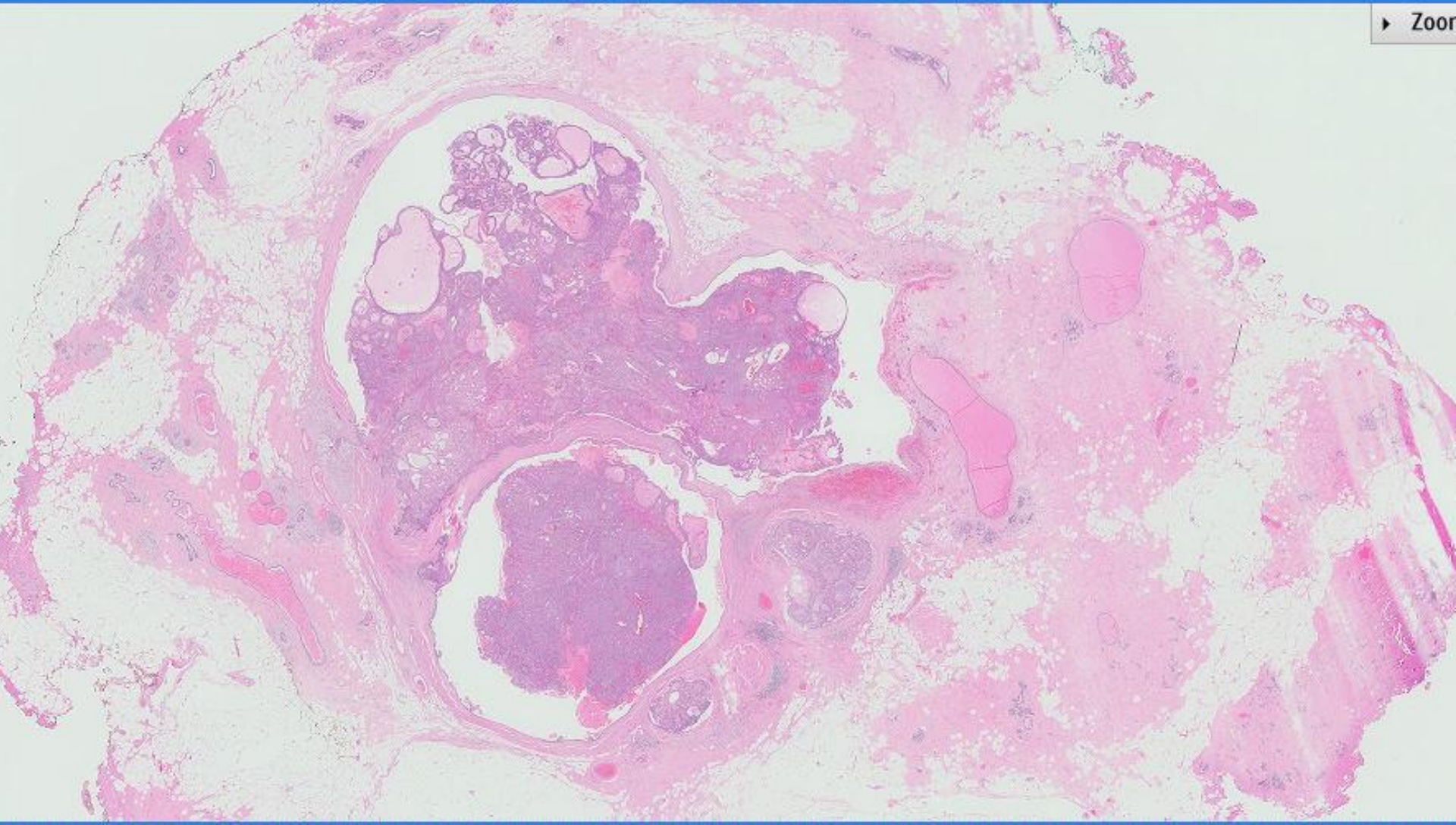
Case 42

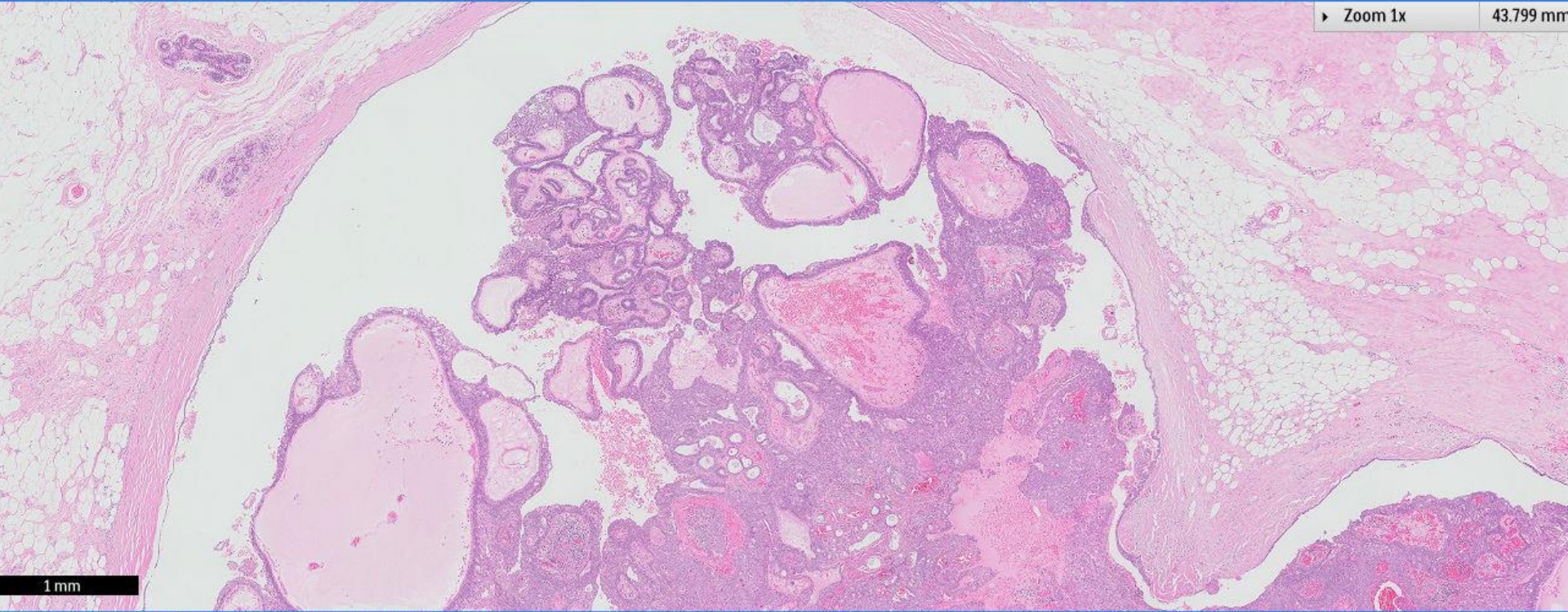
53 year old Chinese woman underwent excision of a right breast subareolar lump.

Prior core biopsy was diagnosed as an intraductal papilloma.

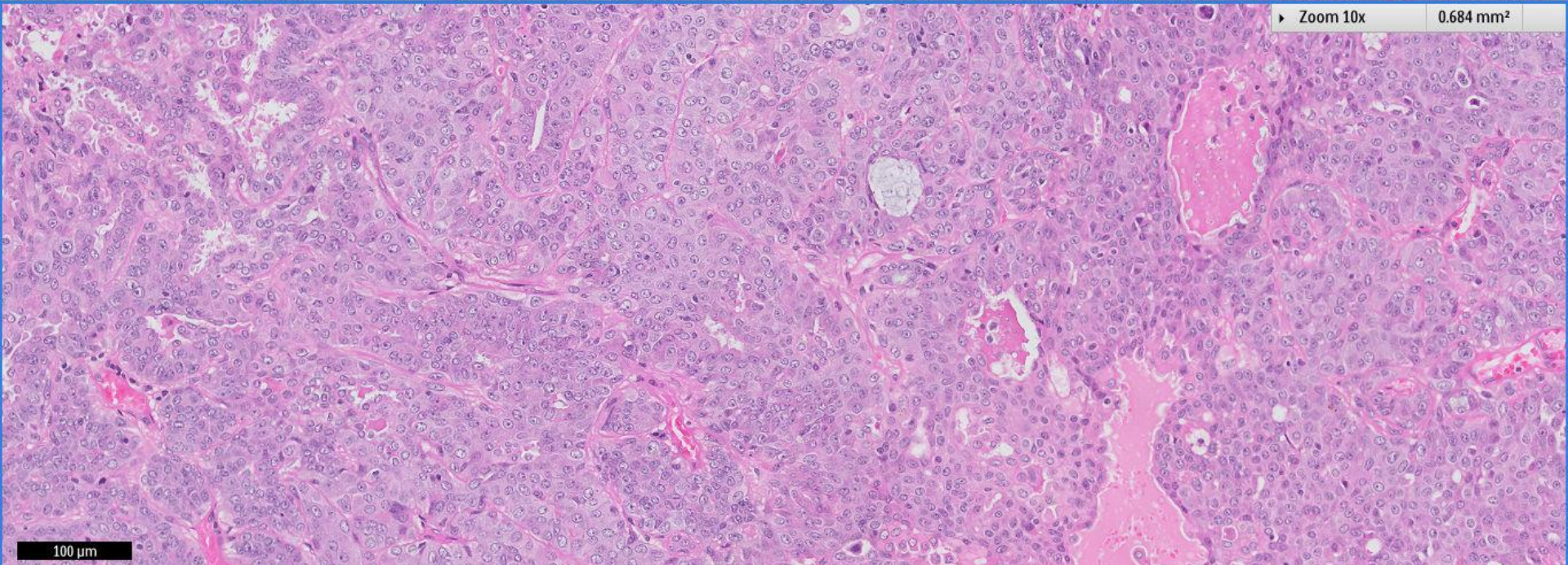








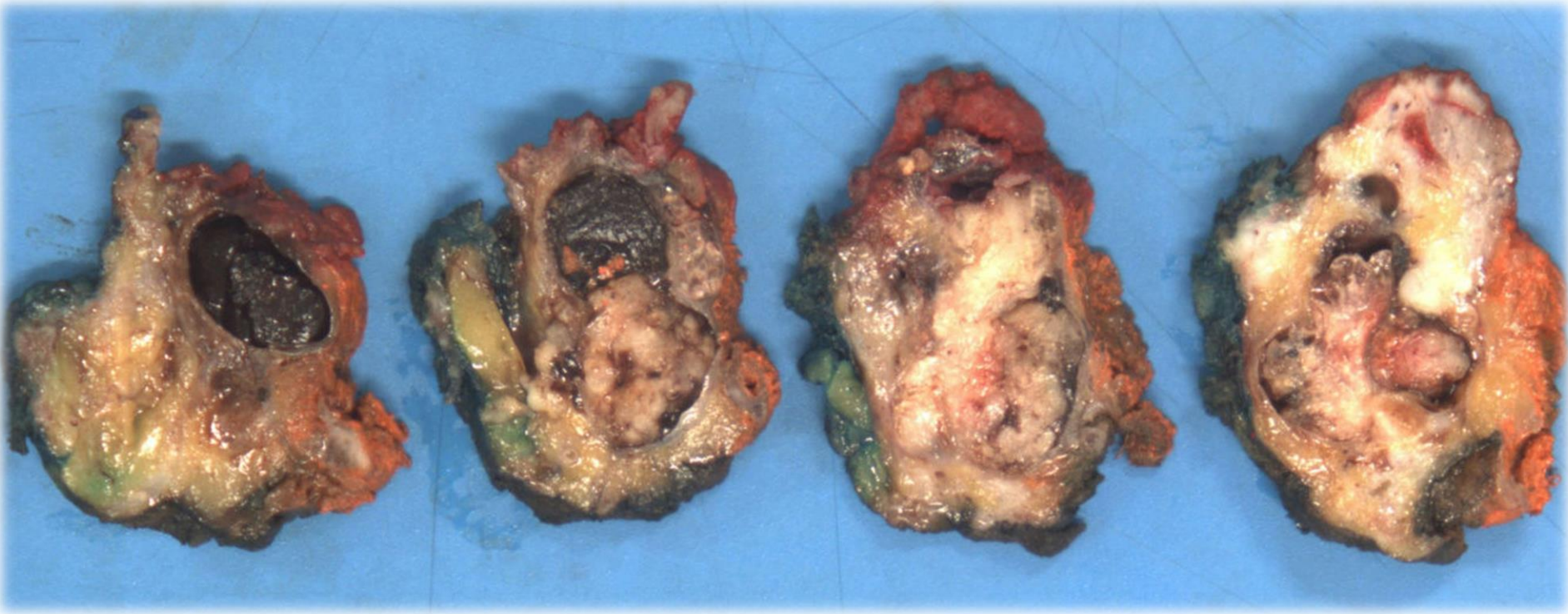
1 mm

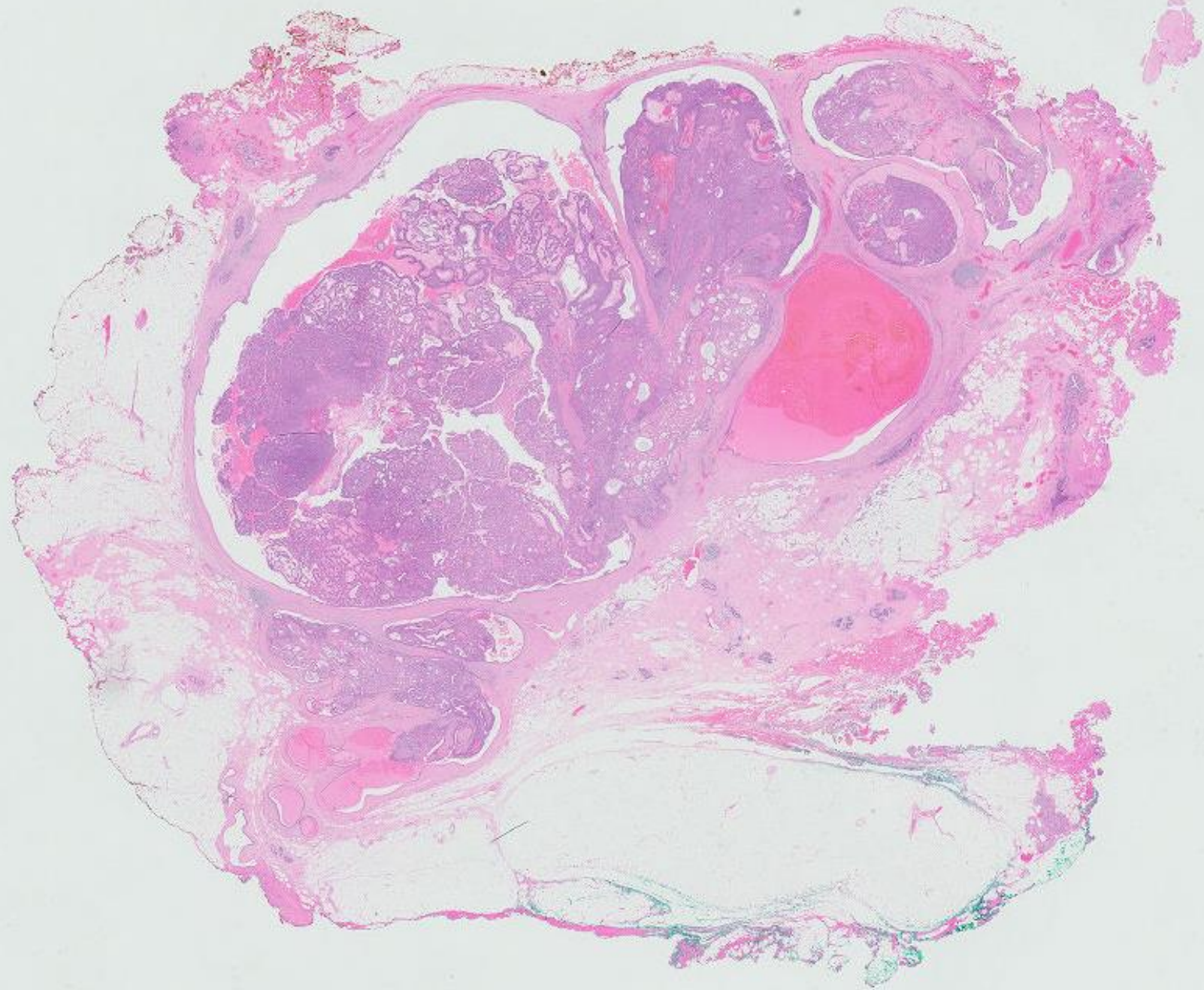


100 μm

Flower Dome, Gardens by the Bay

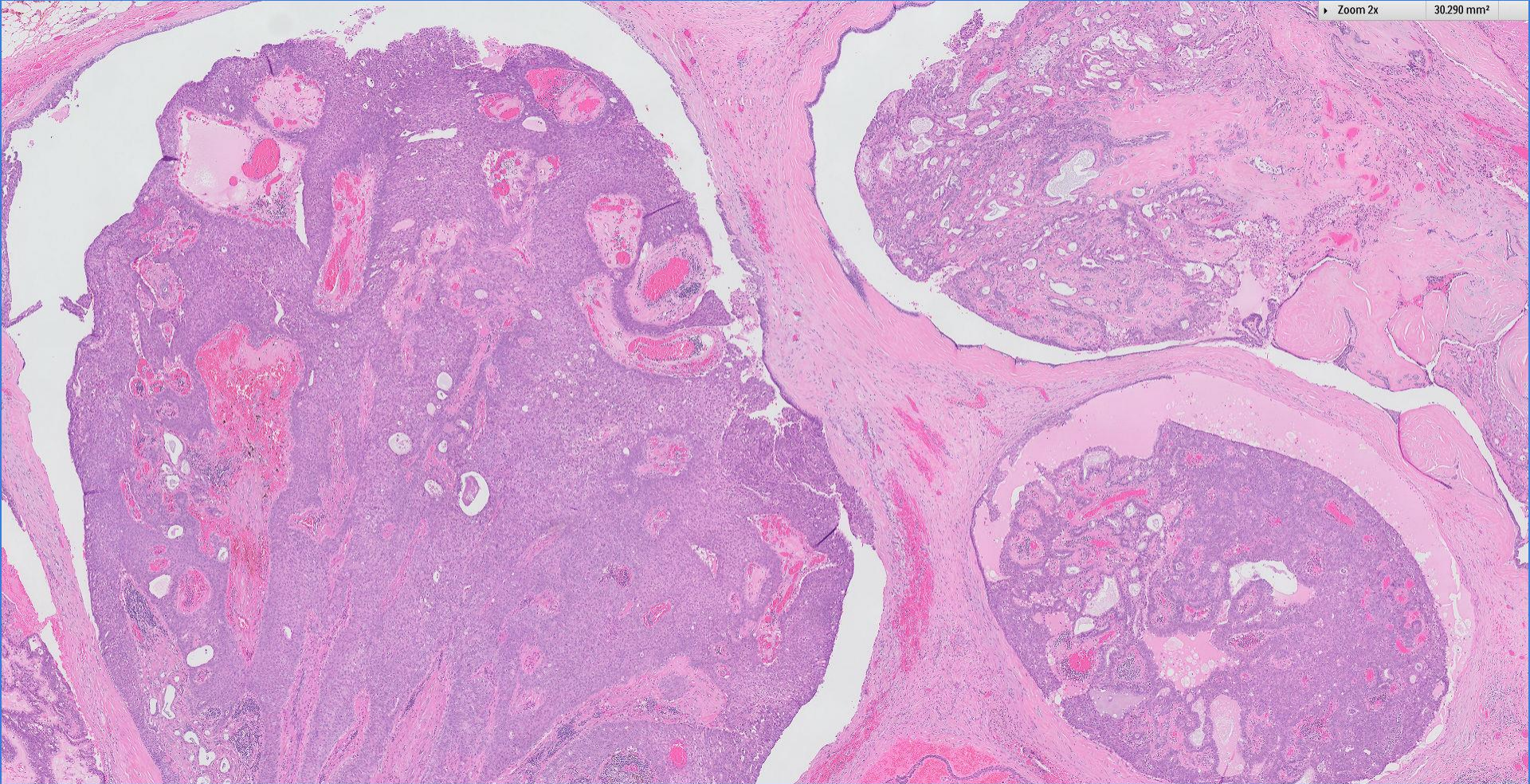






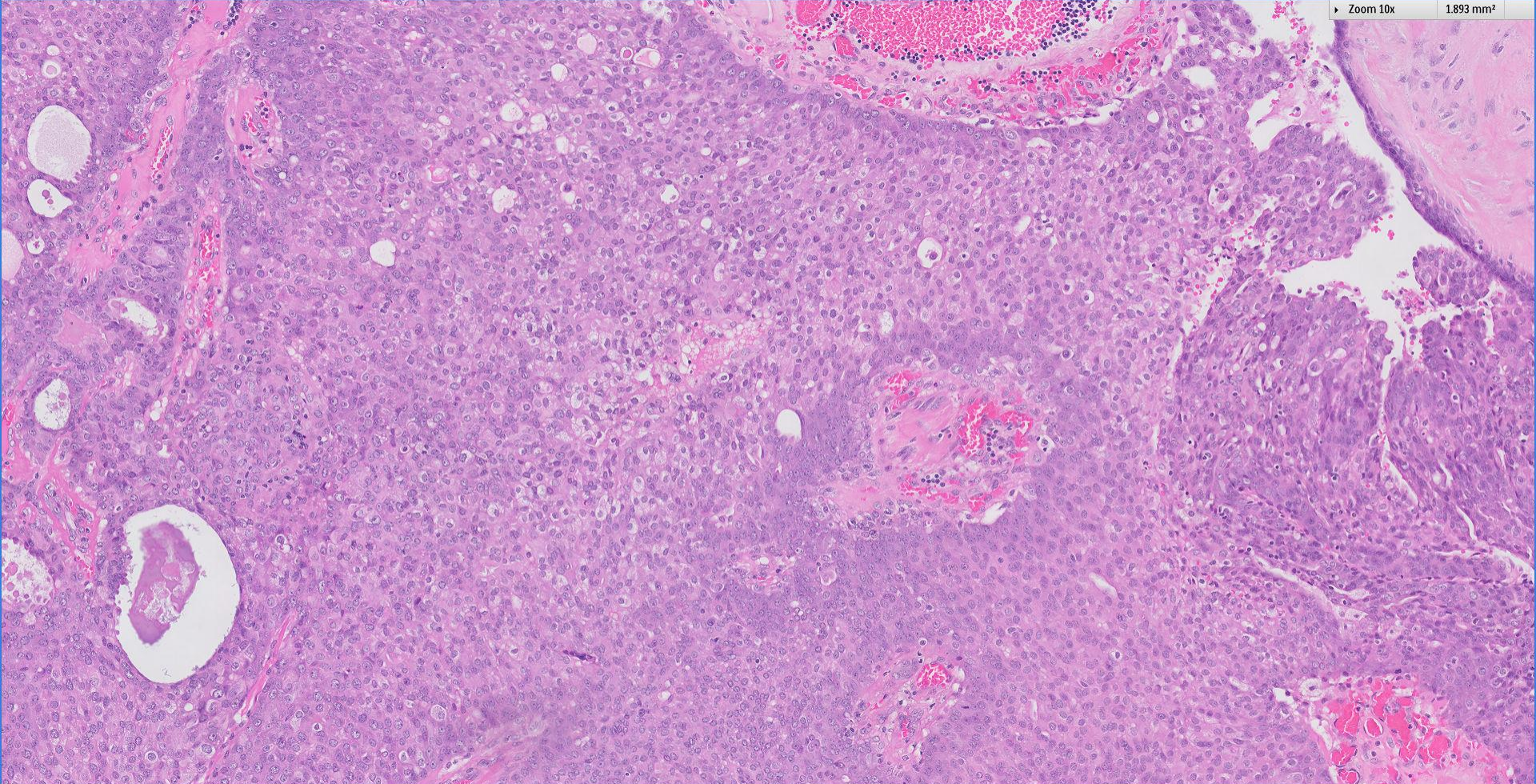
Zoom 2x

30.290 mm²

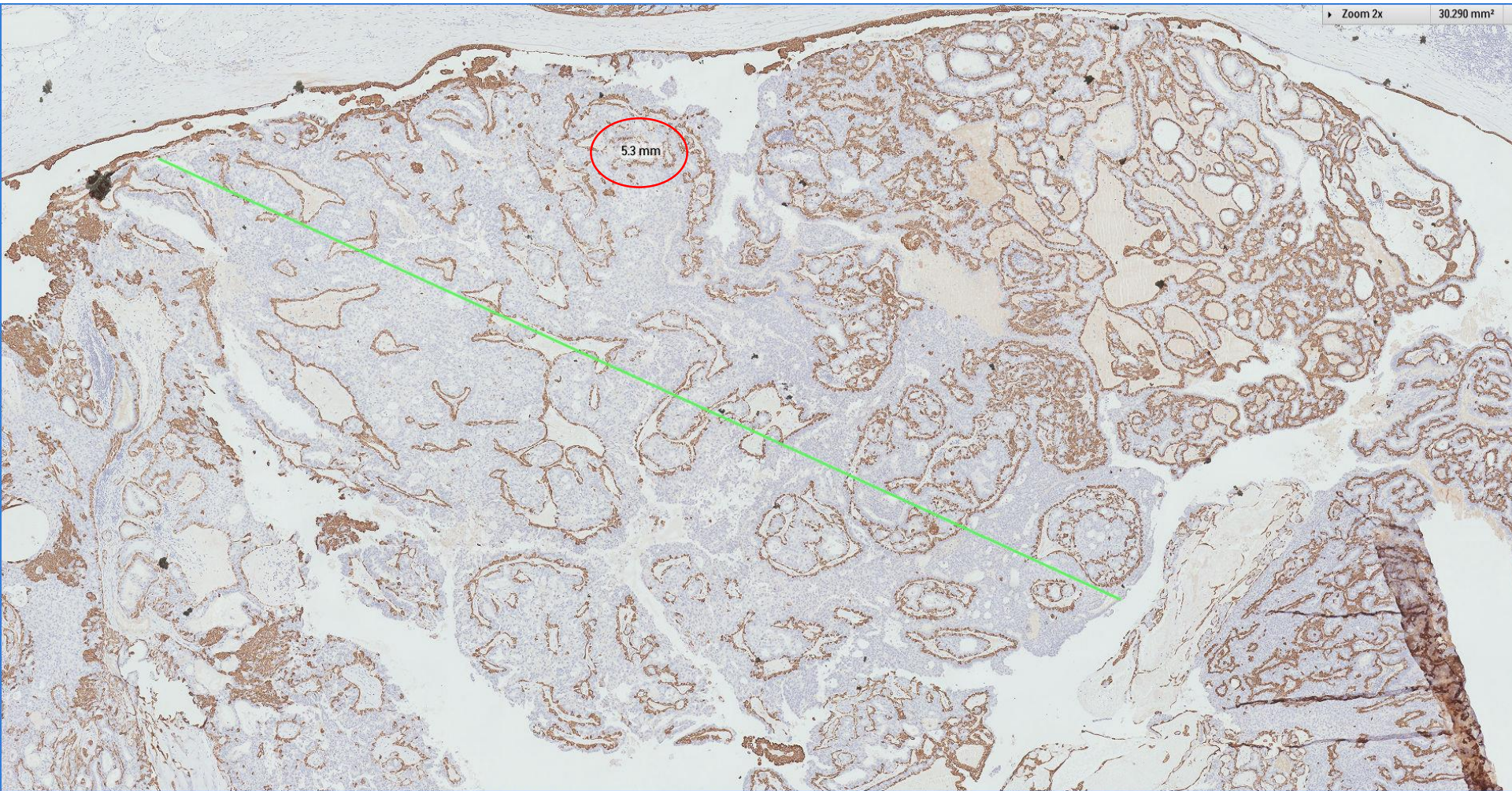


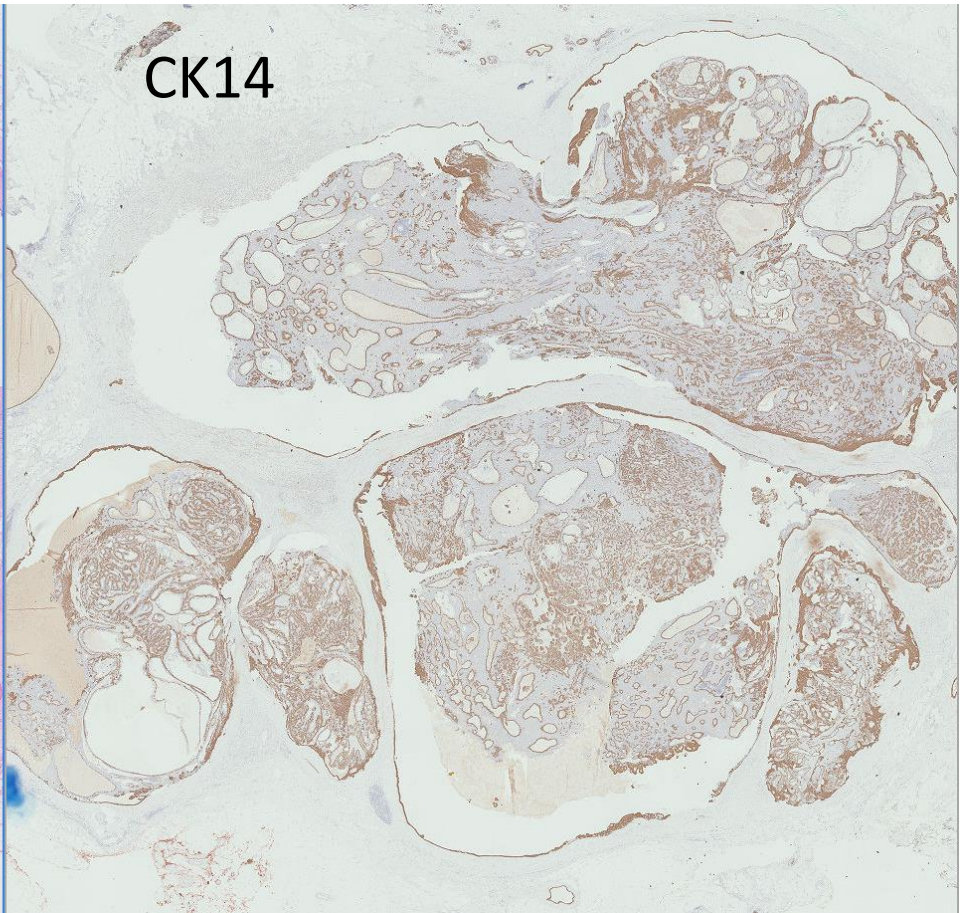
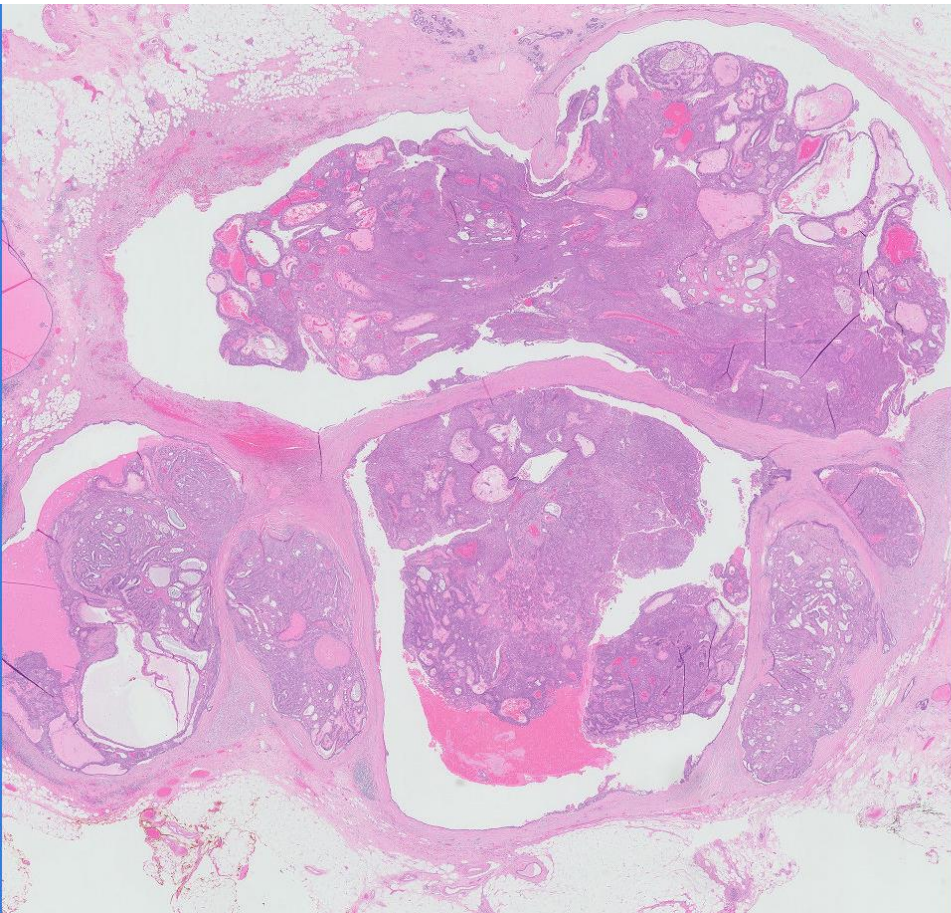
Zoom 10x

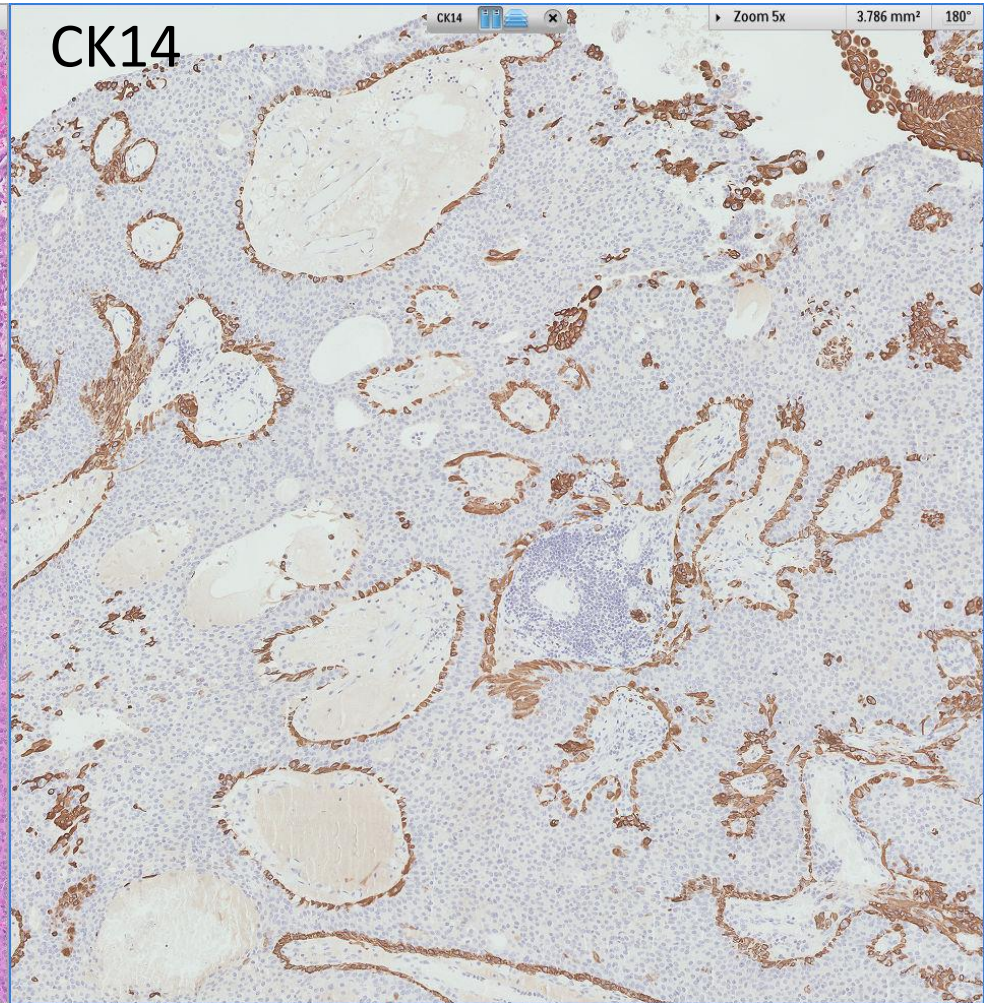
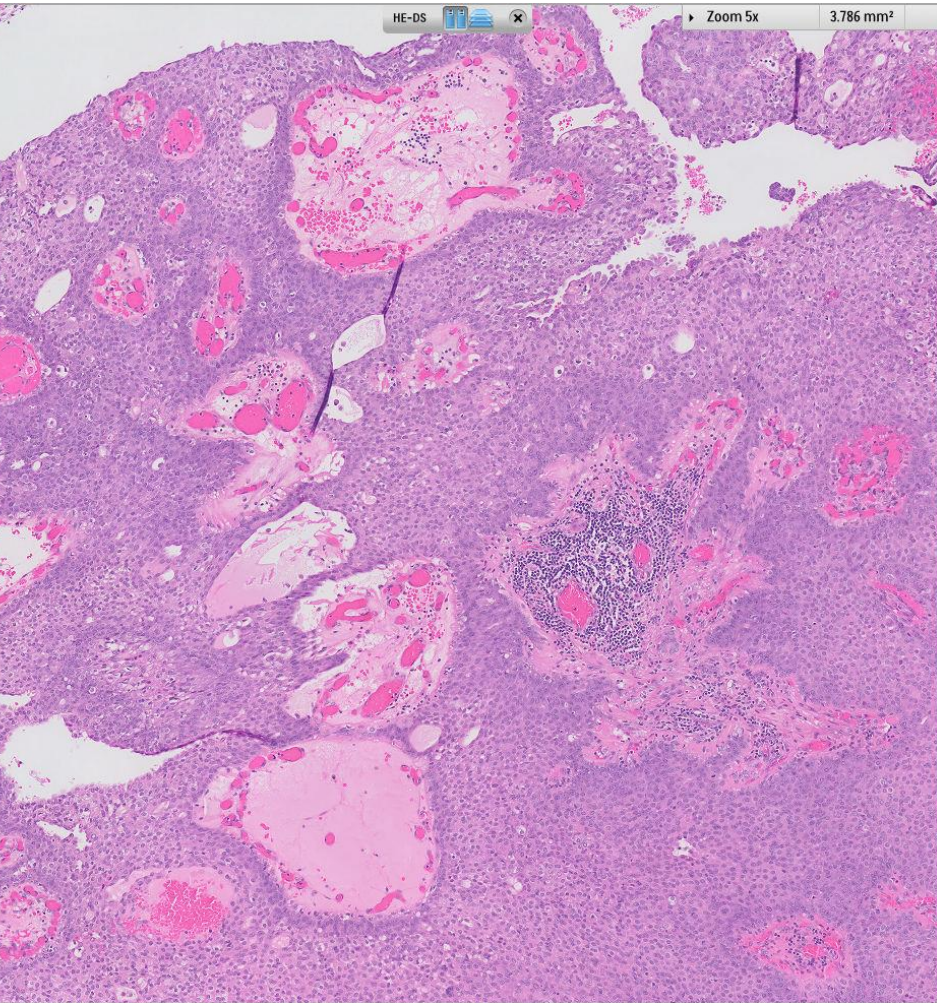
1.893 mm²

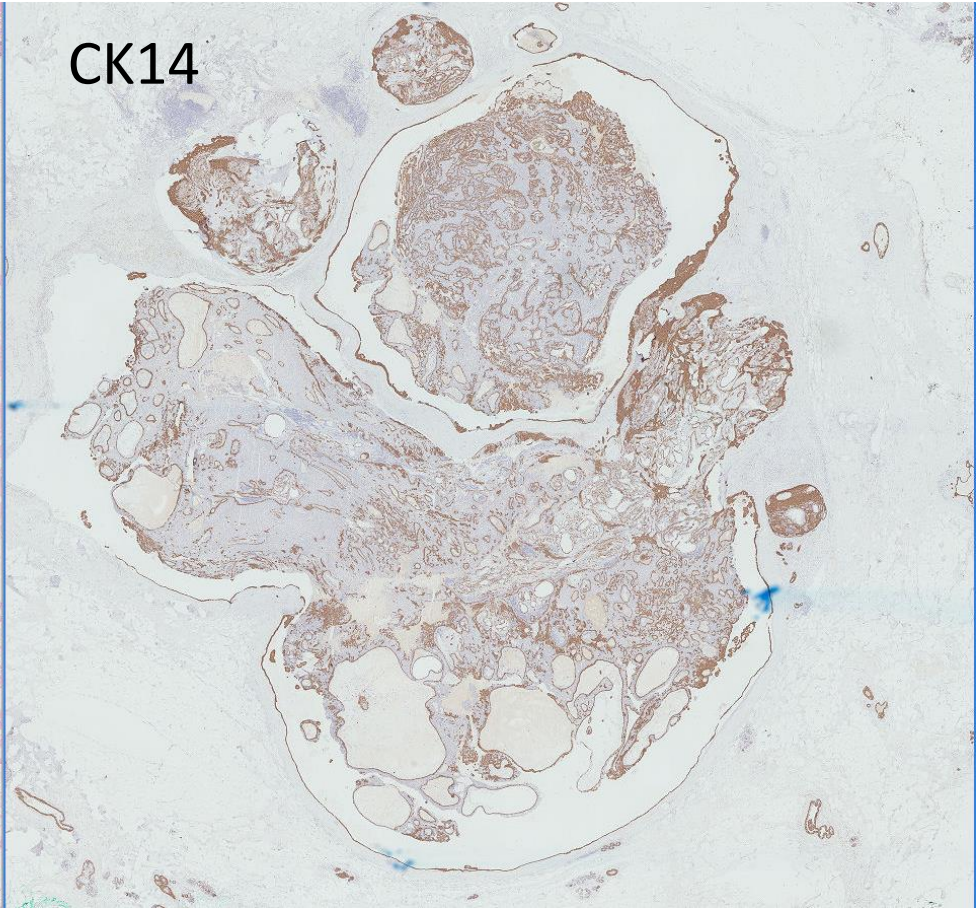
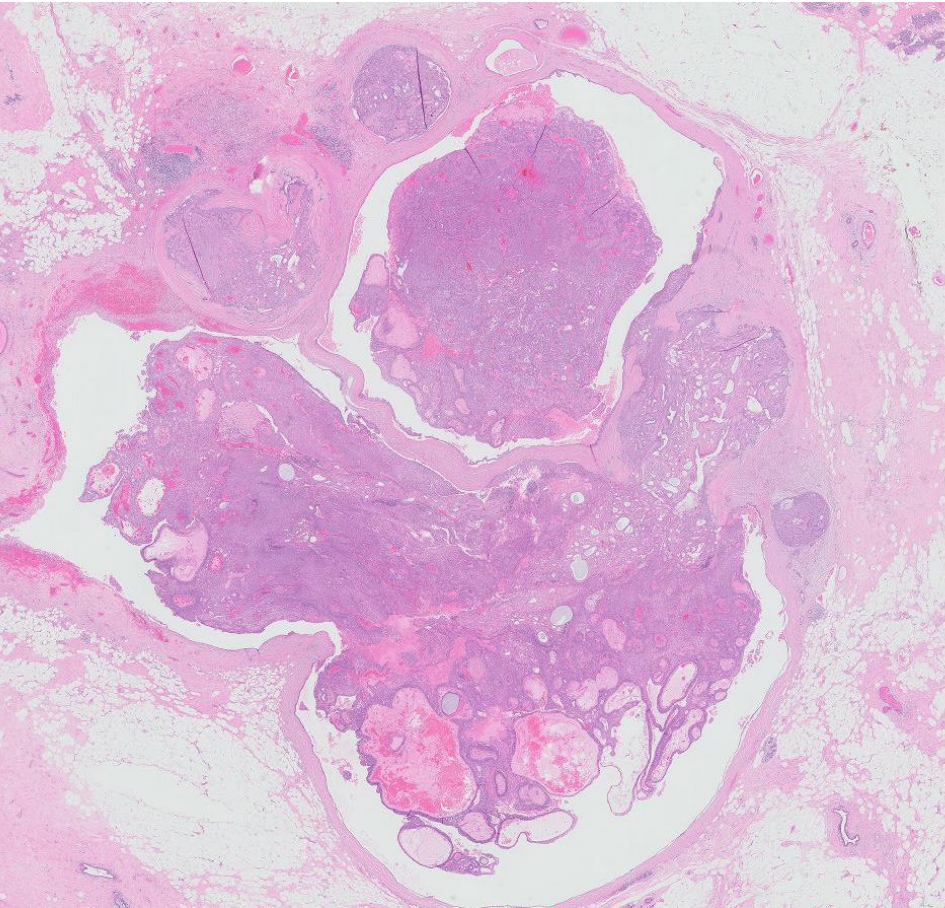


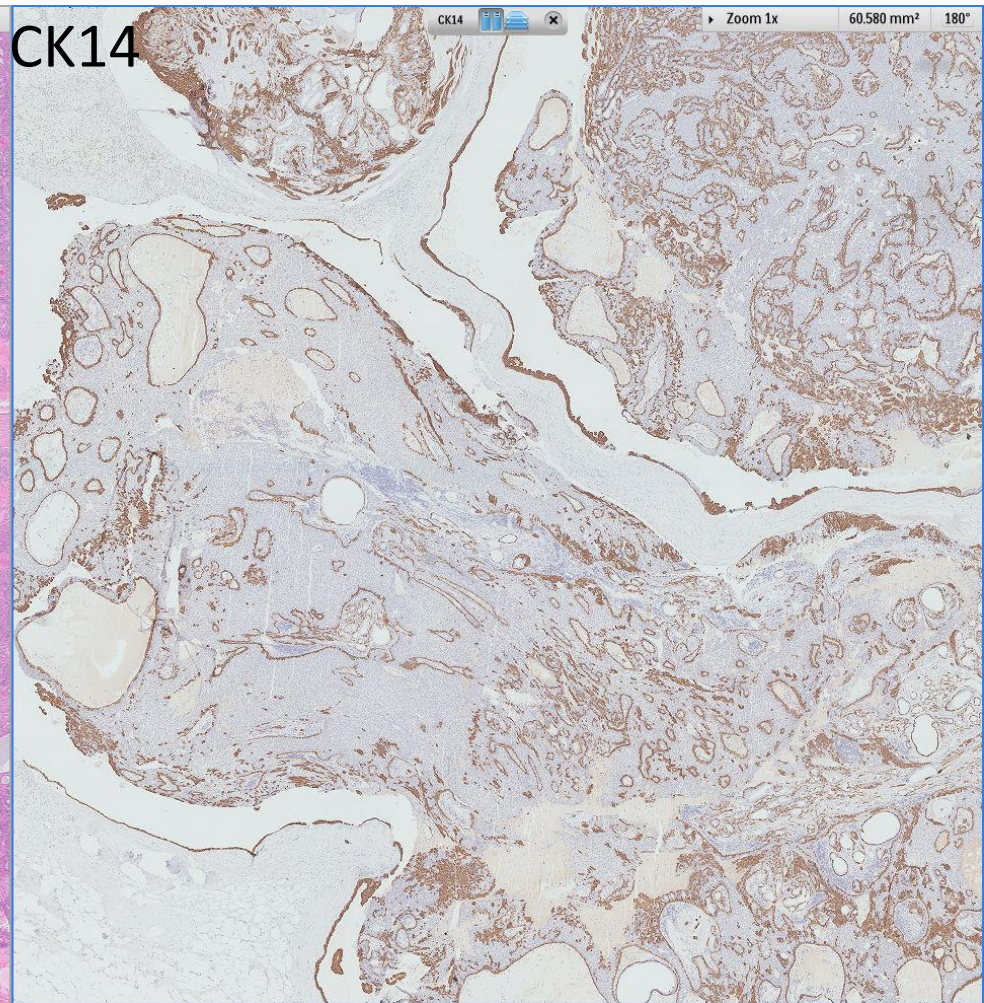
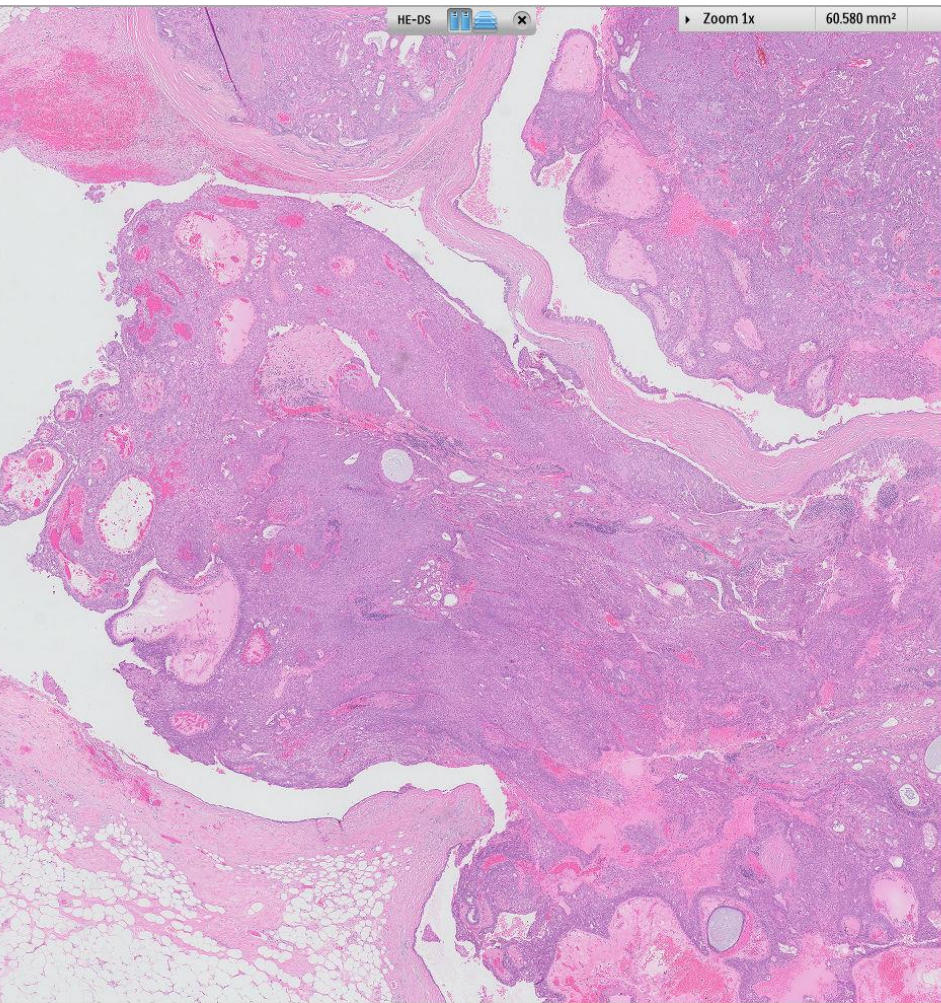
CK14

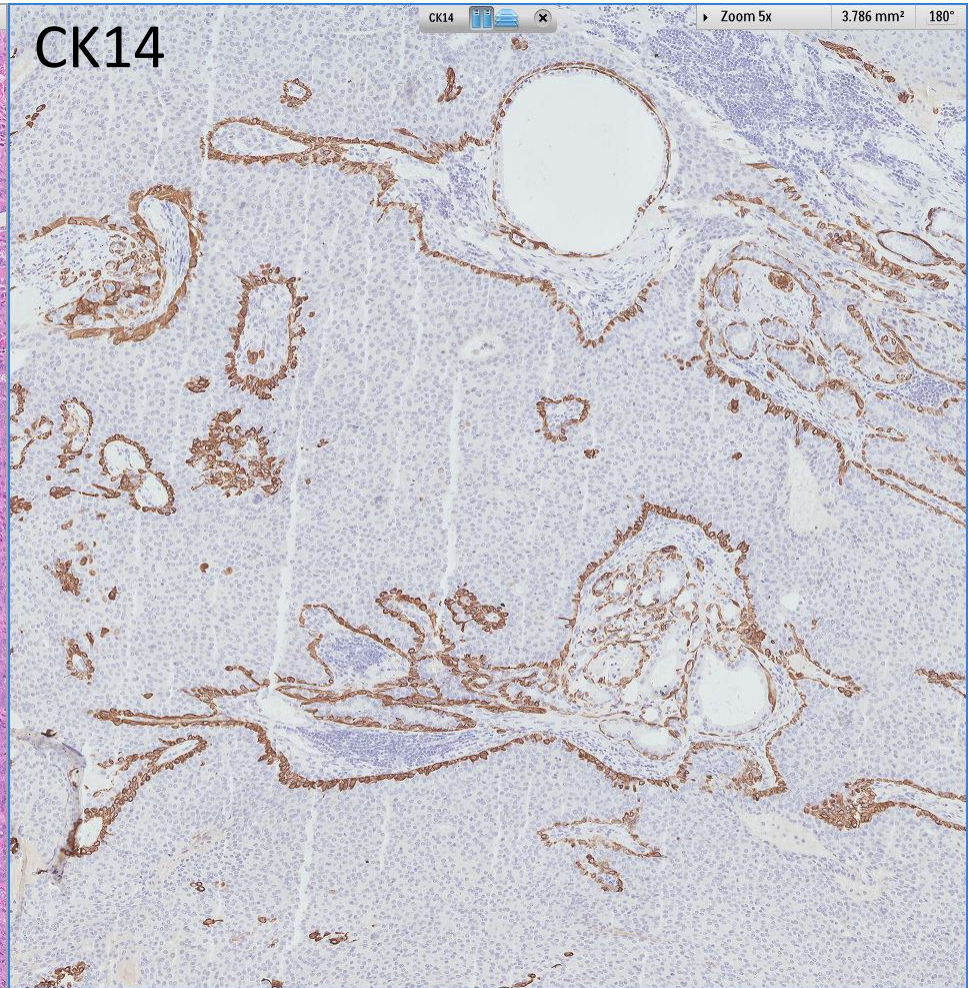
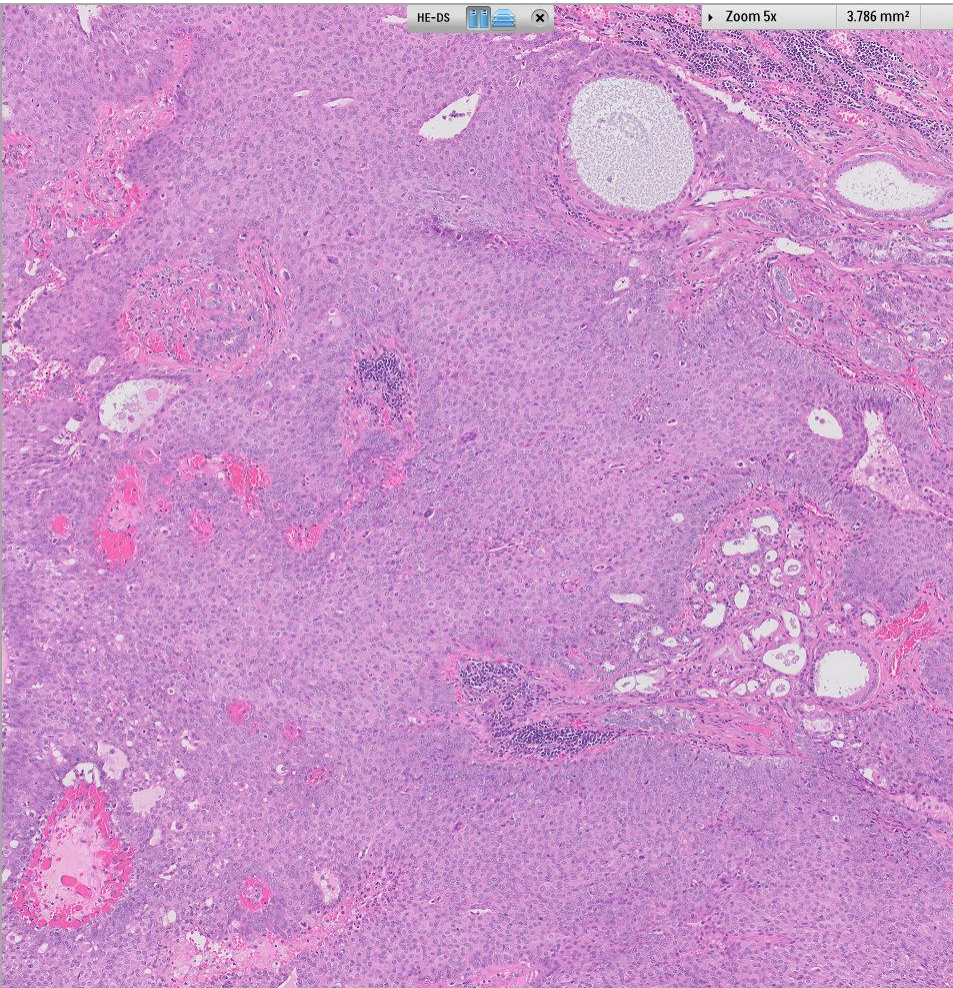


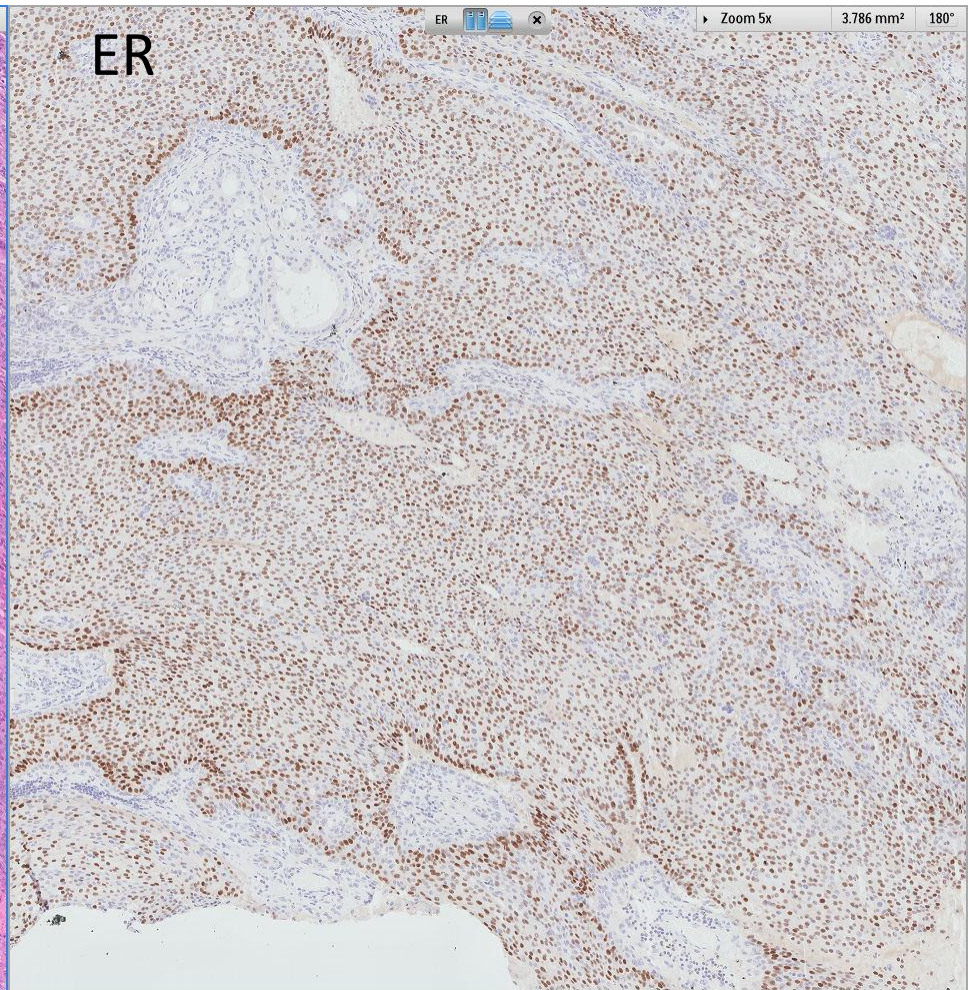
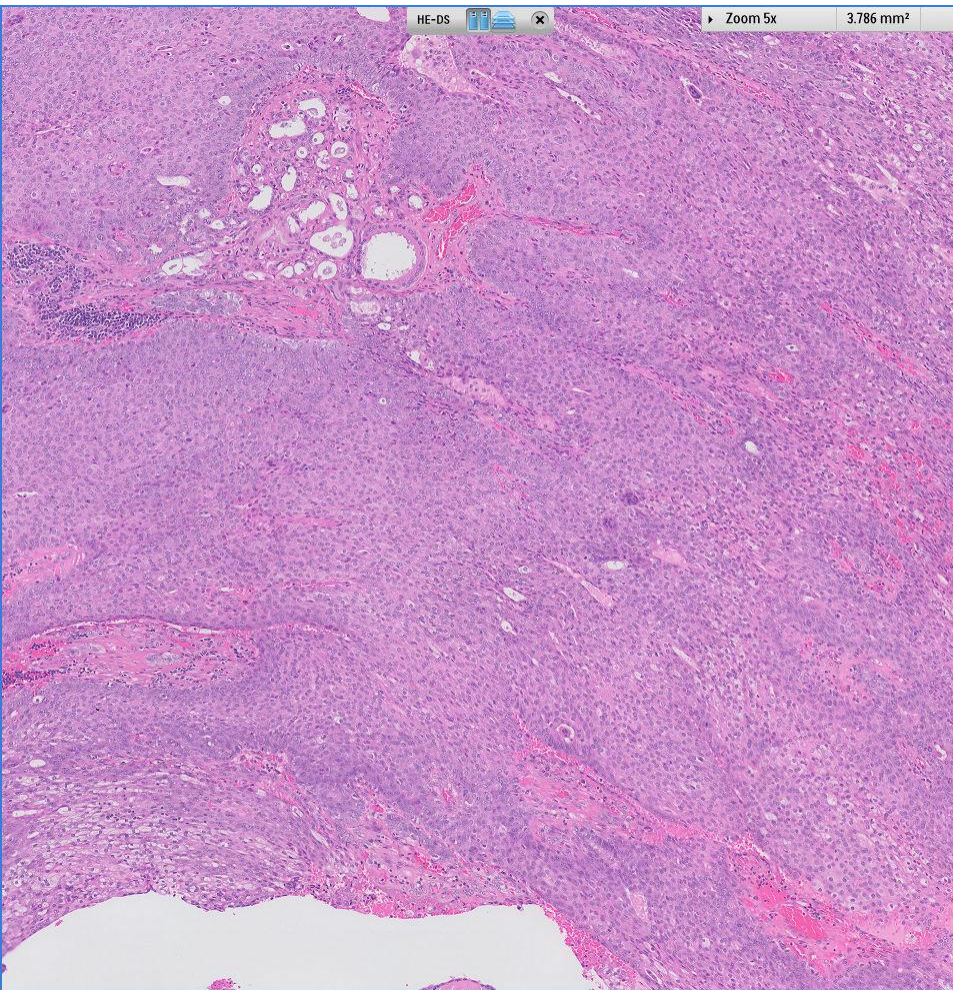


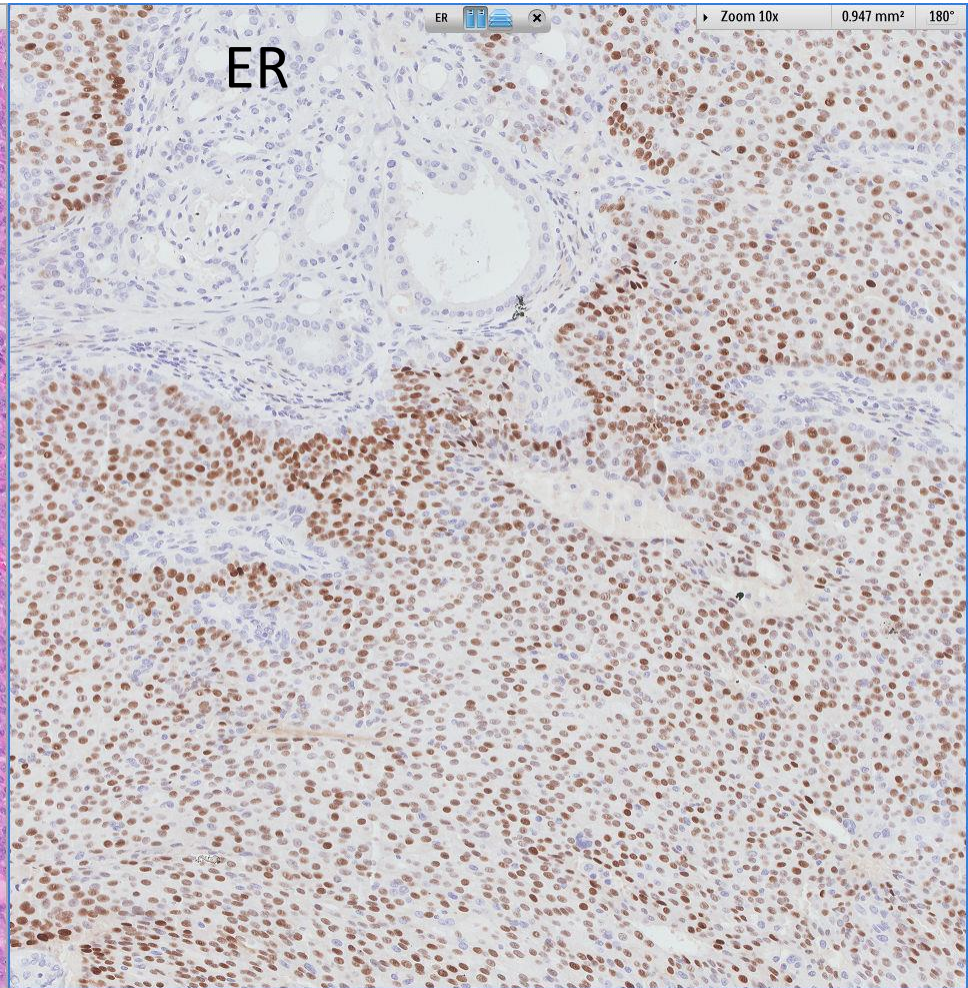
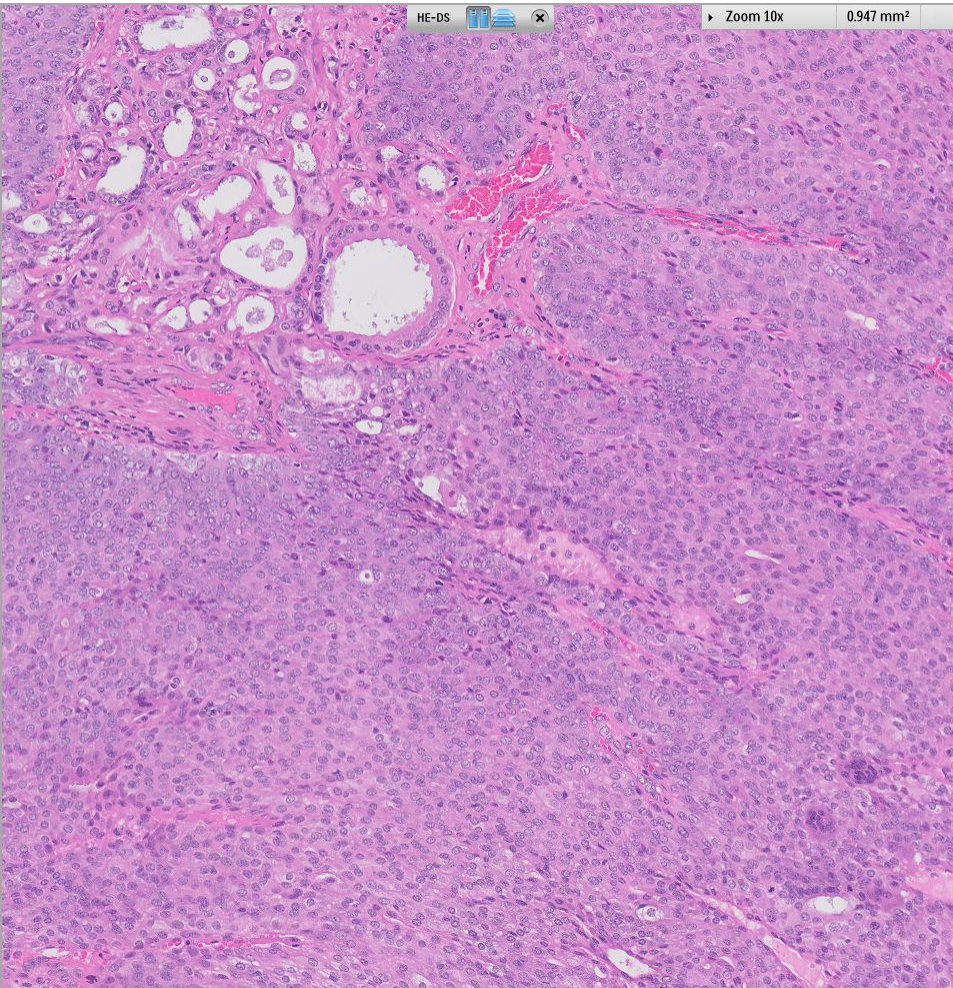


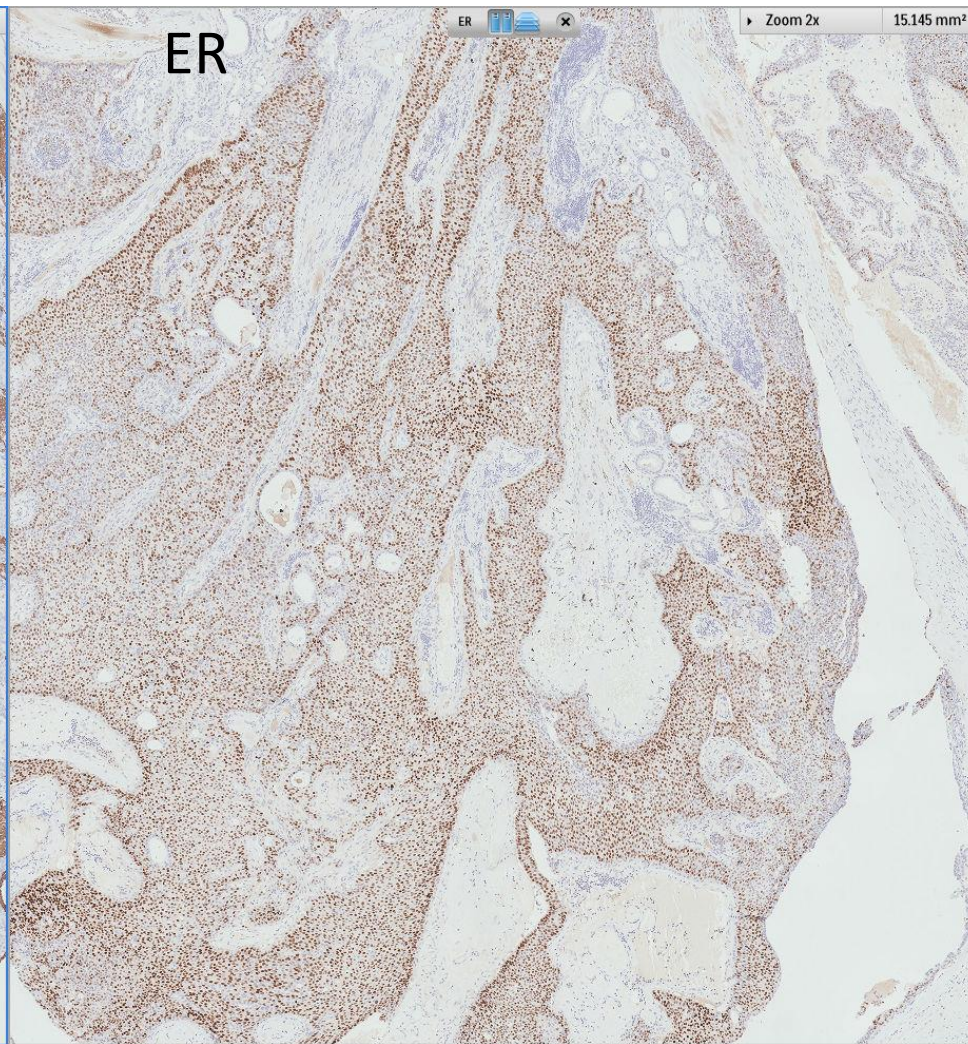
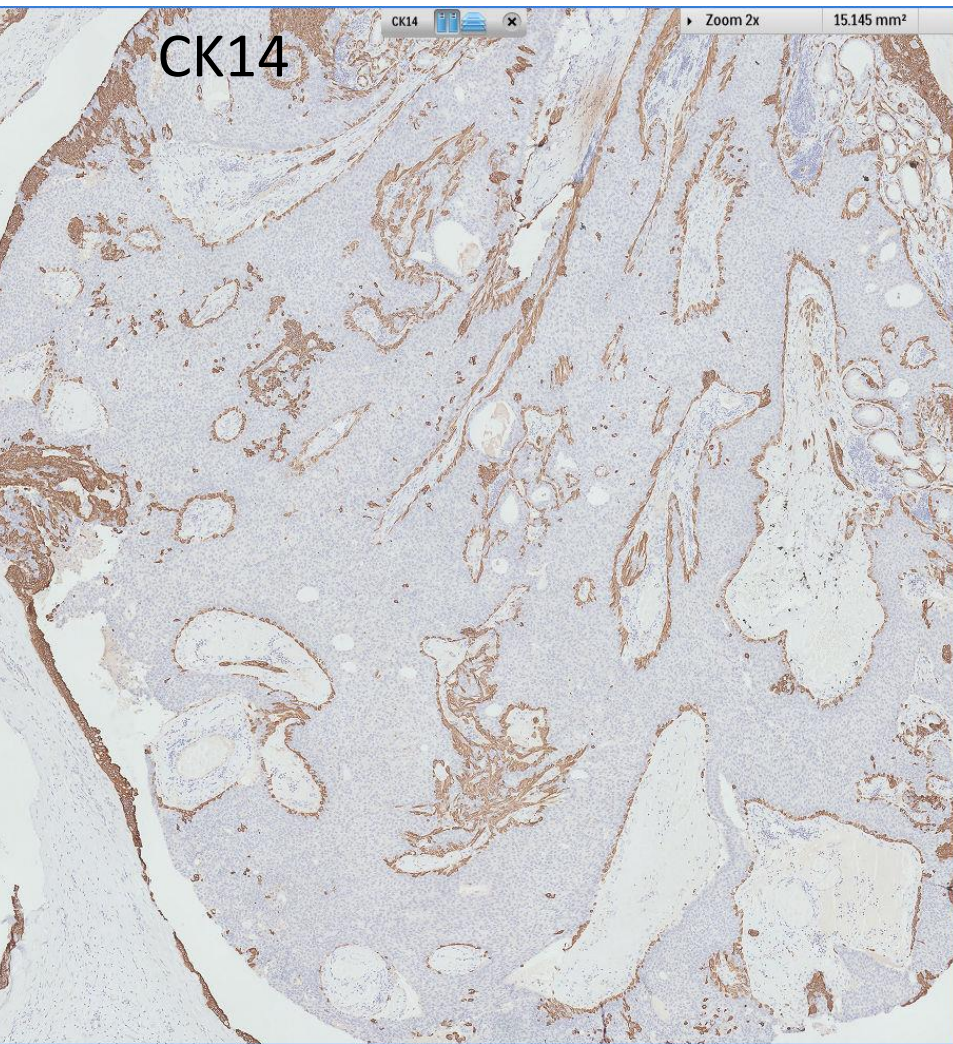


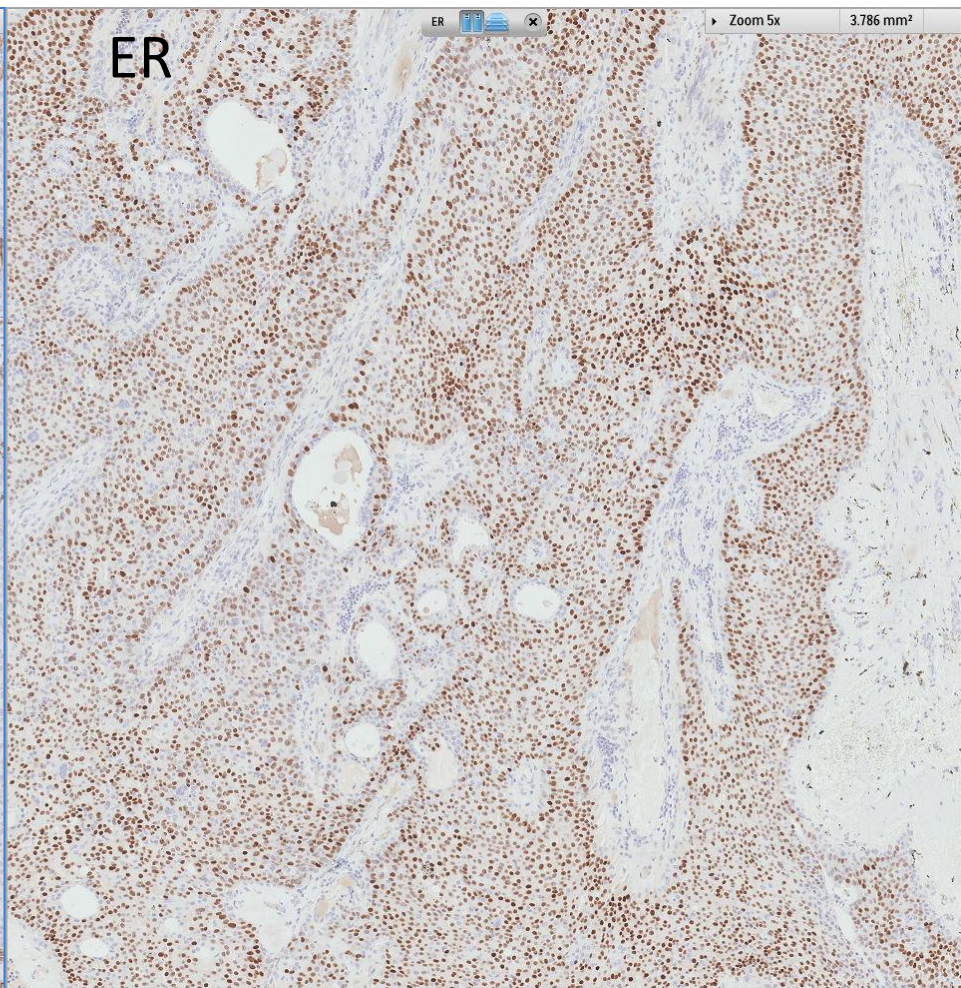
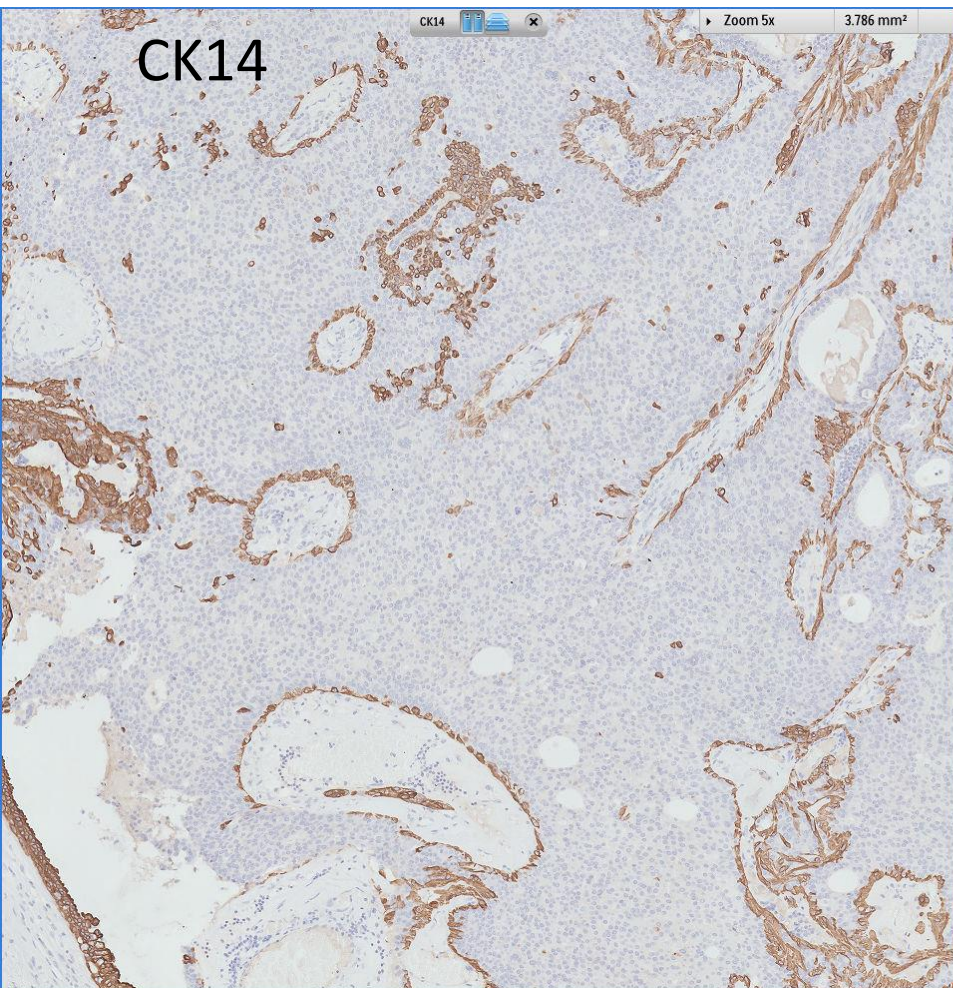












Diagnosis

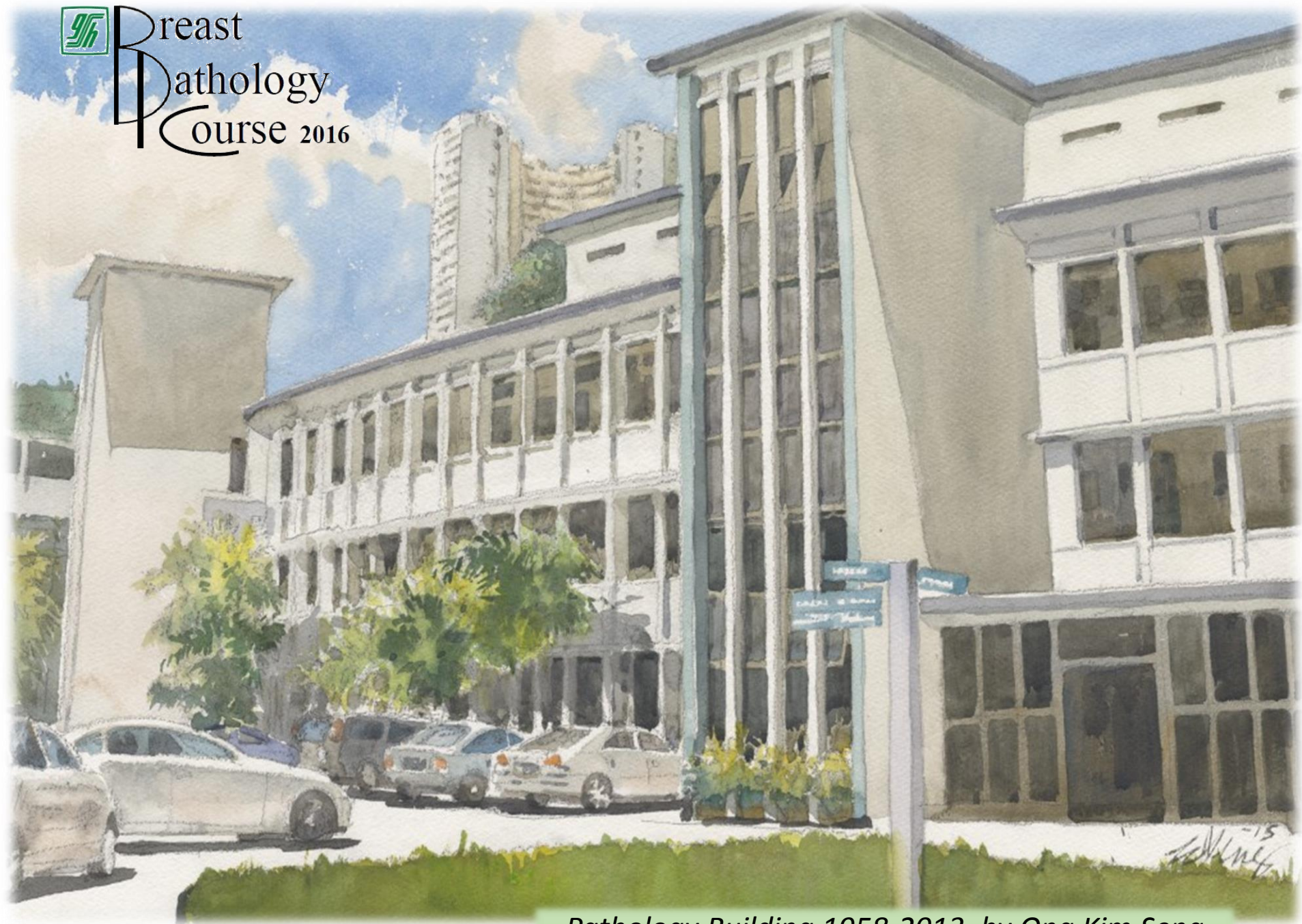
Right breast lump, excision biopsy ~

Low to intermediate nuclear grade ductal carcinoma in situ arising from an intraductal papilloma.

DCIS measures 16mm.

ER positive, PR positive.

 Breast
Pathology
Course 2016



Pathology Building 1958-2013, by Ong Kim Seng