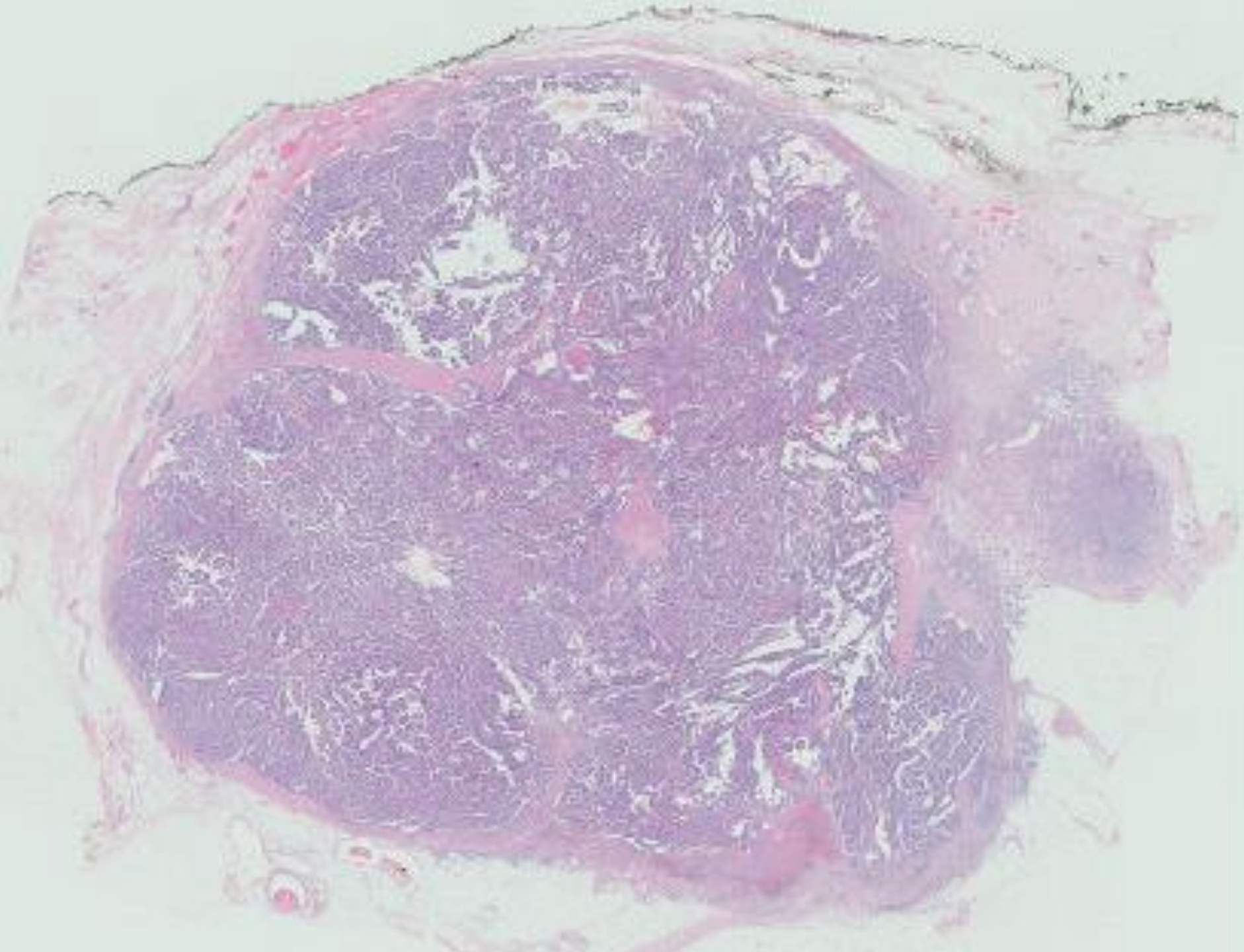


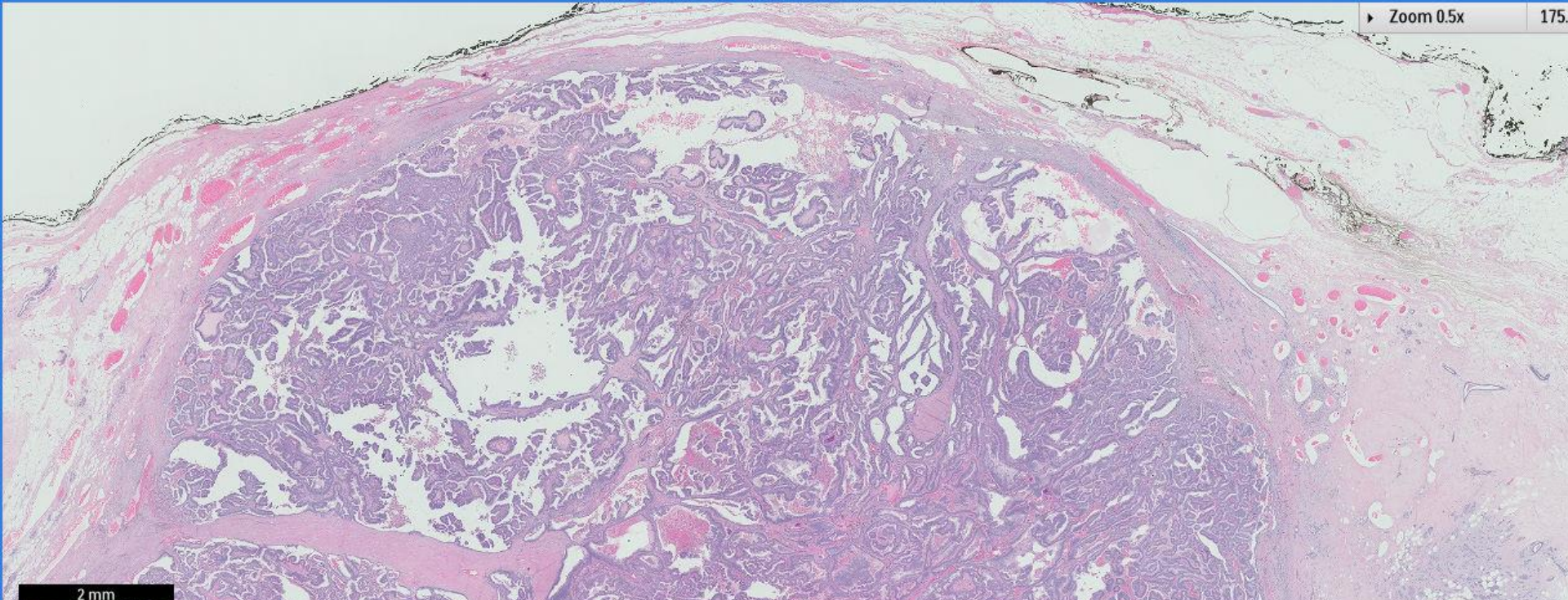
## Case 36

Adult woman underwent left breast  
mastectomy

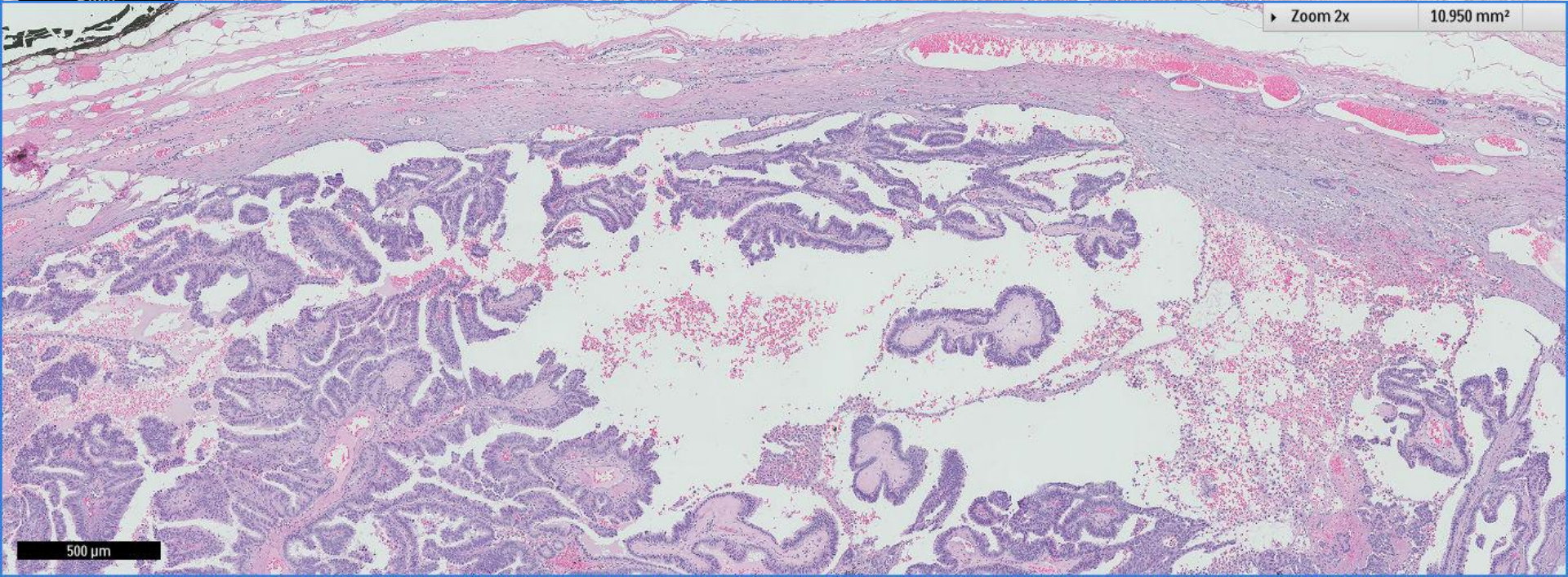
*(Case contributed by Dr Mihir Gudi, KKH)*







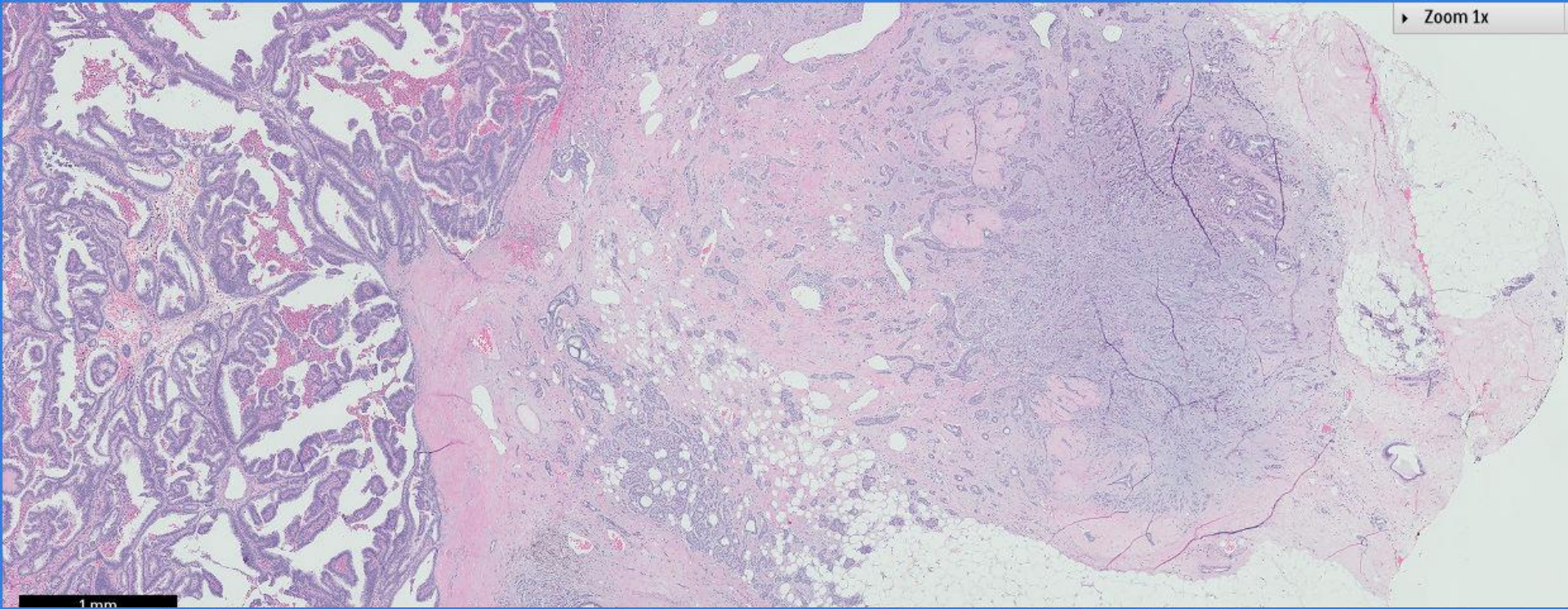
2 mm



500 μm



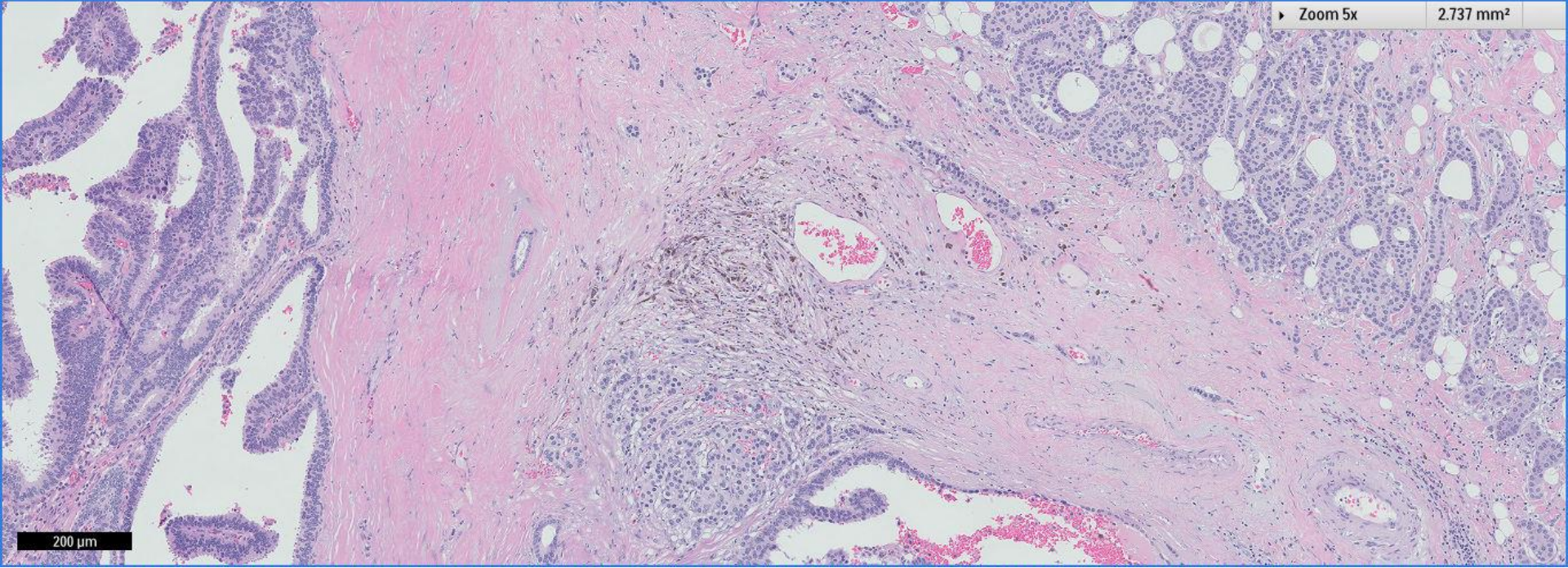
▶ Zoom 1x



1 mm

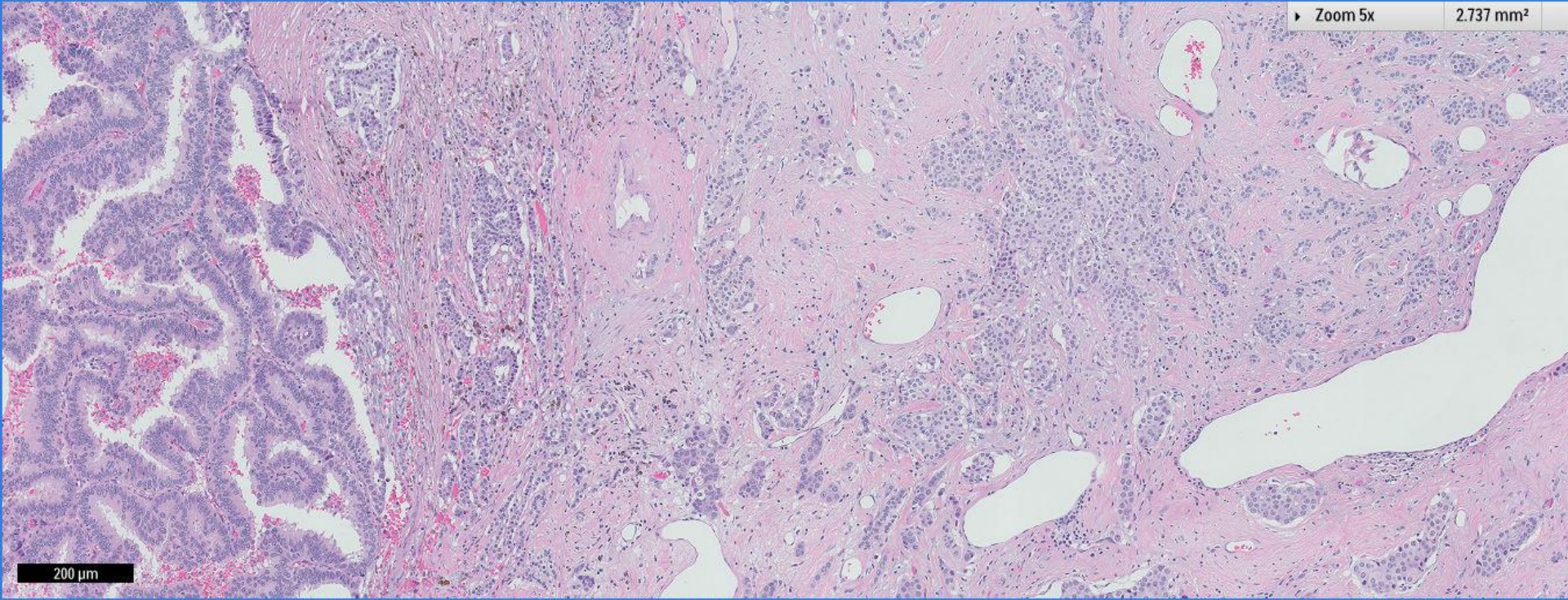
▶ Zoom 5x

2.737 mm<sup>2</sup>

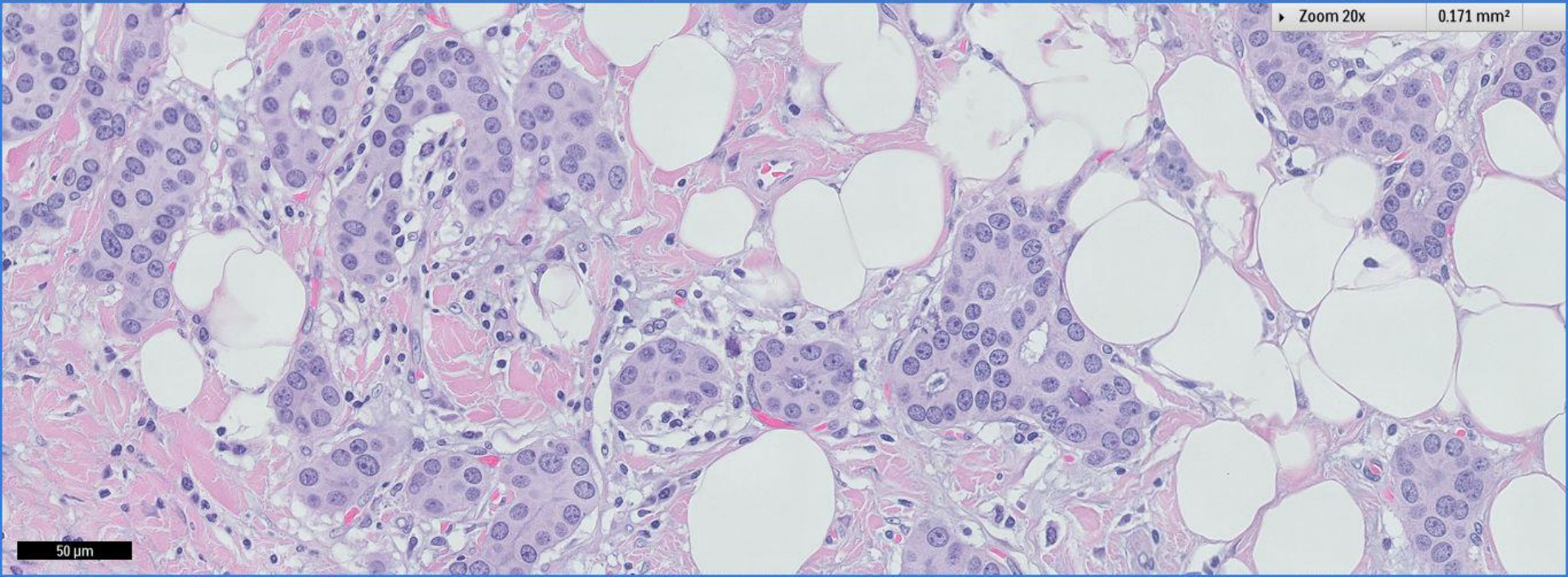


200 μm





200  $\mu$ m

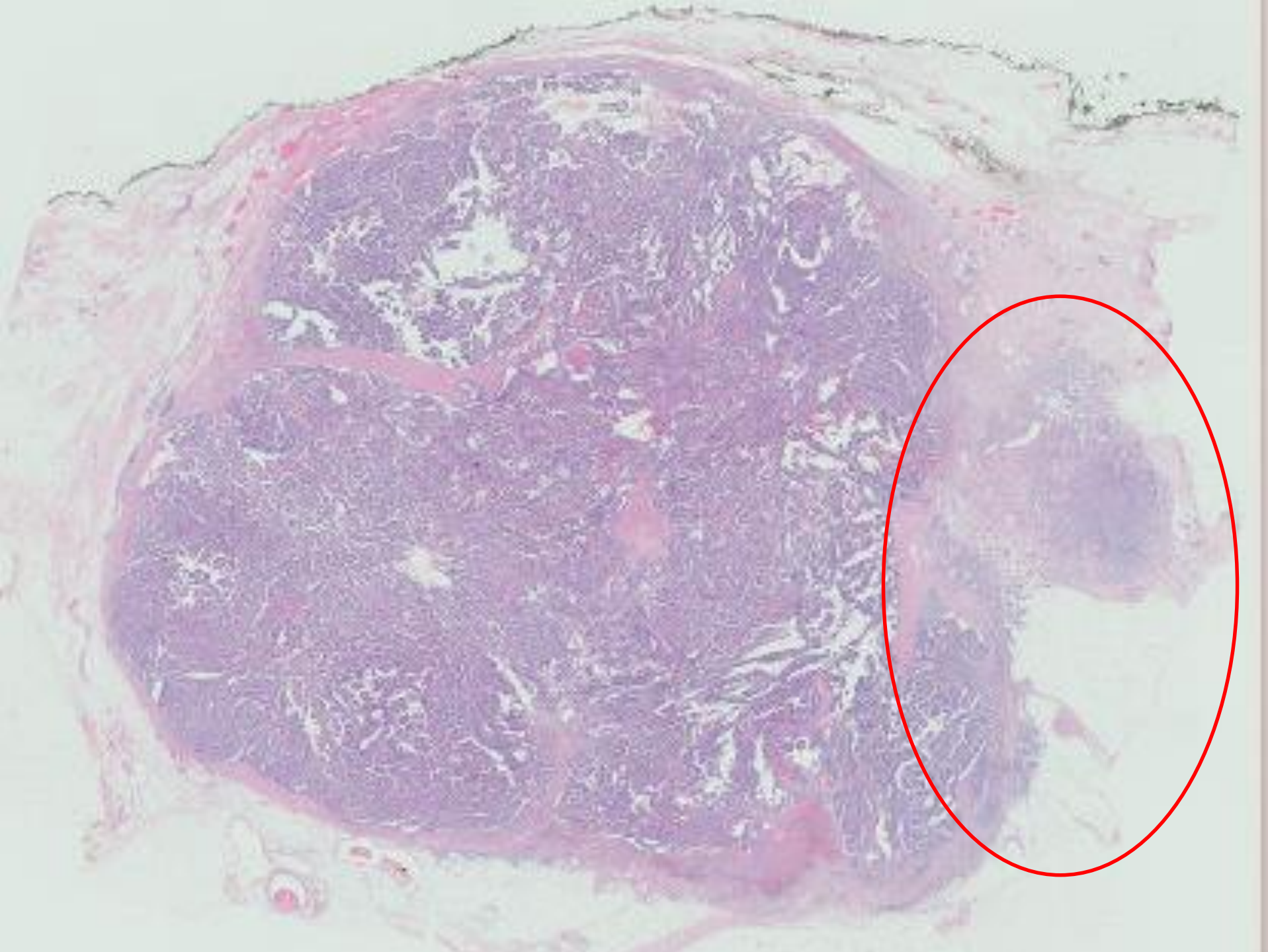


50  $\mu$ m

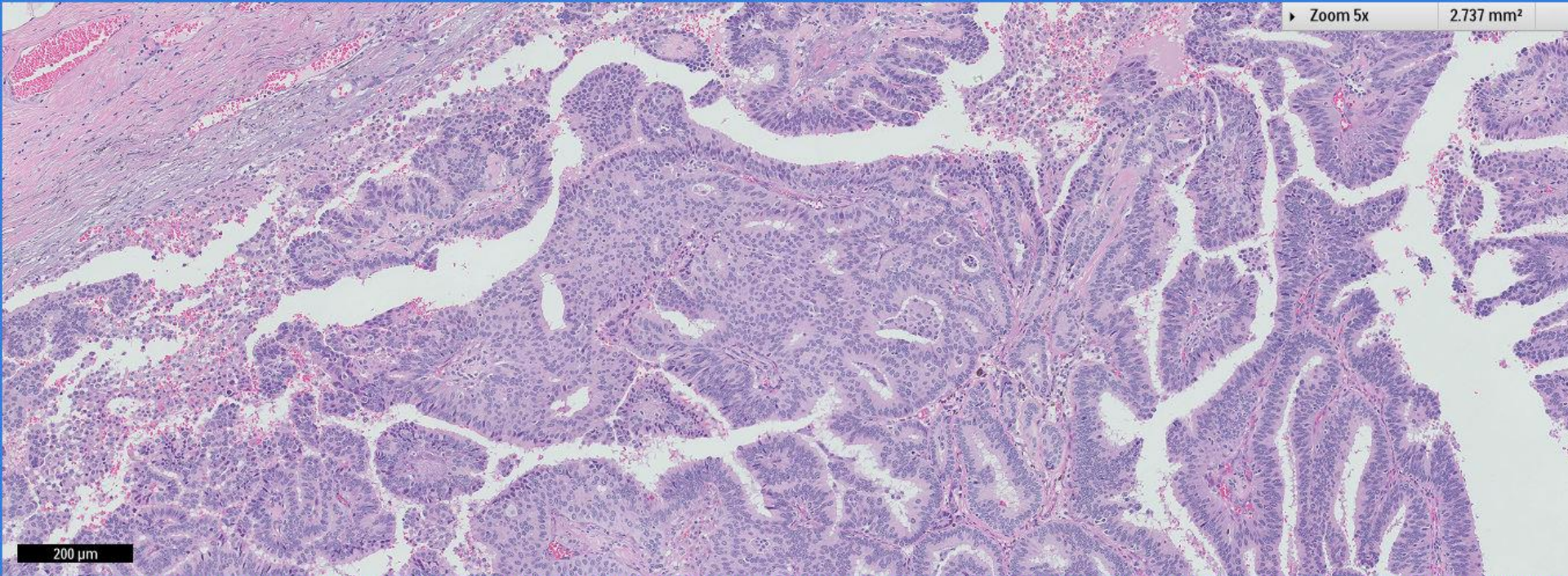


*Marina Bay Sands at sunset*

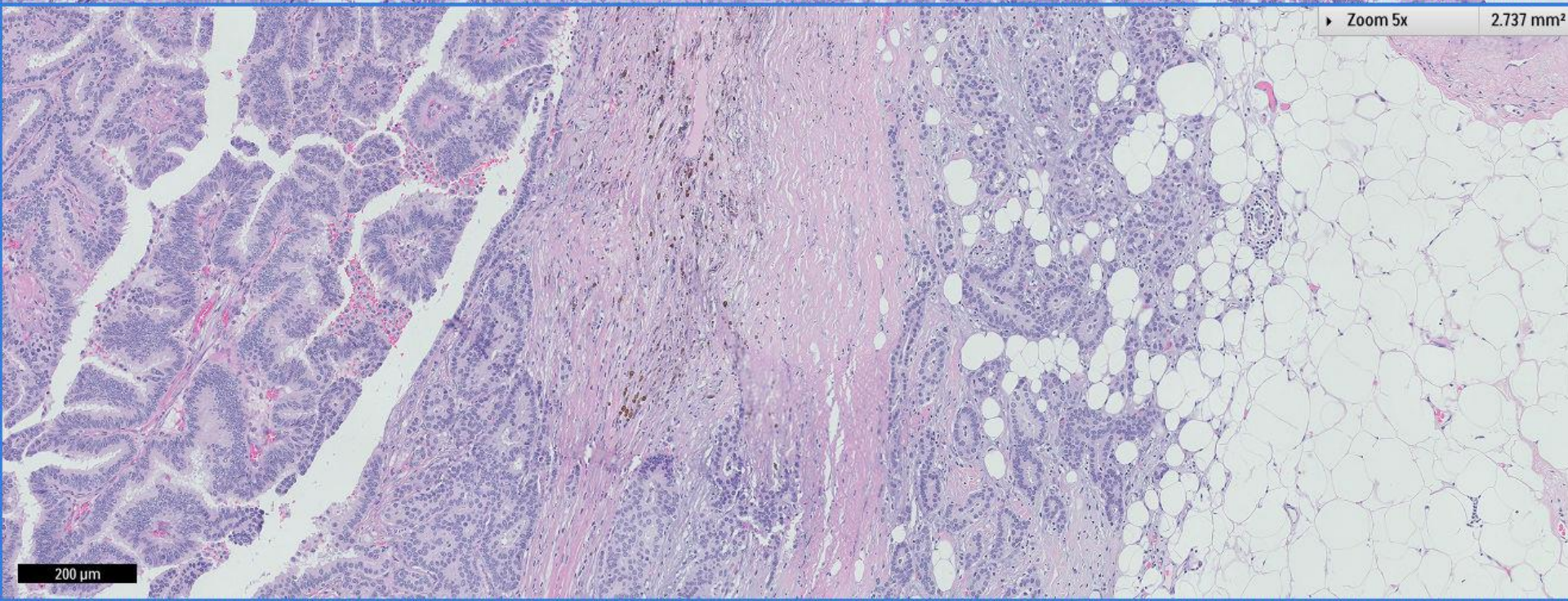






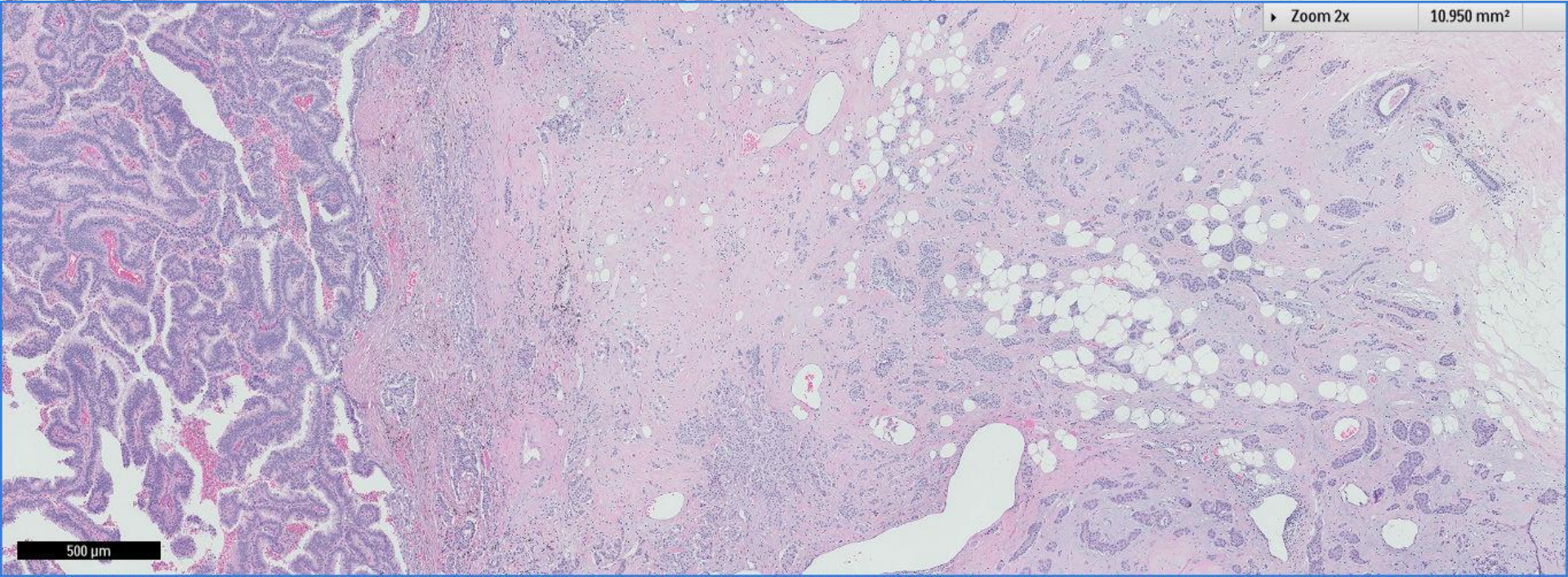
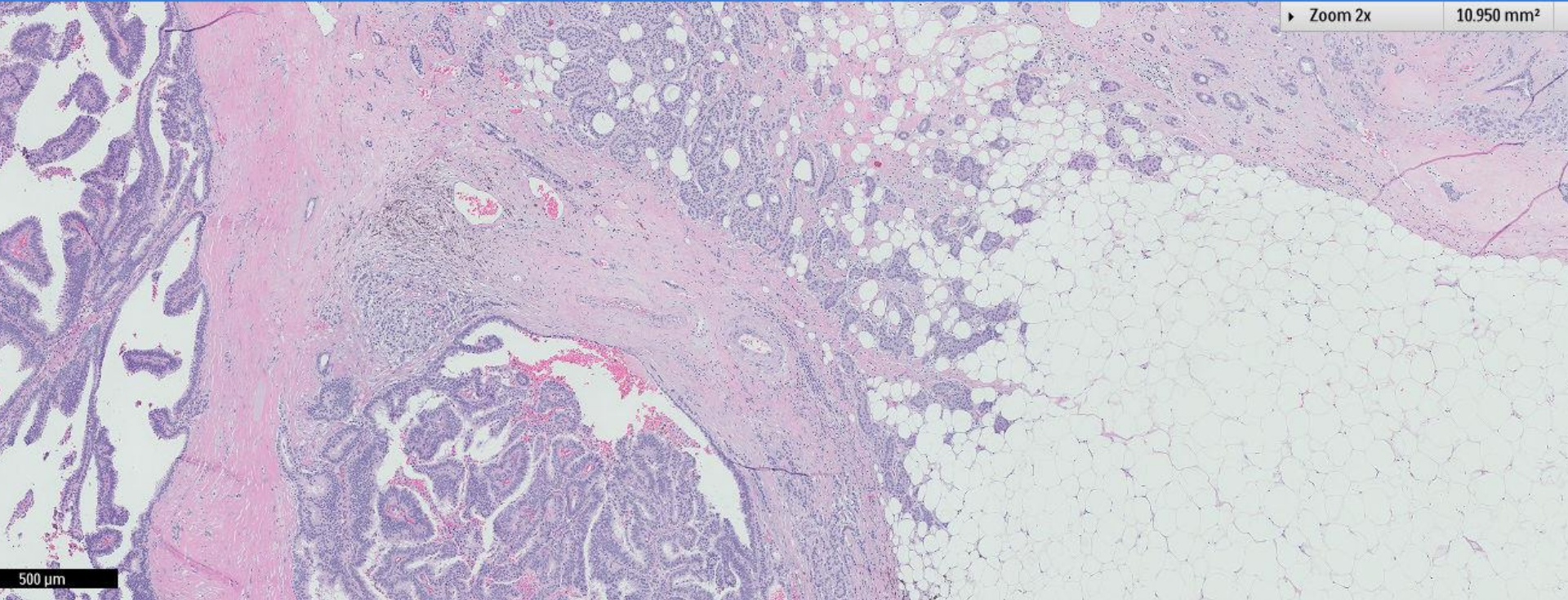


200 μm

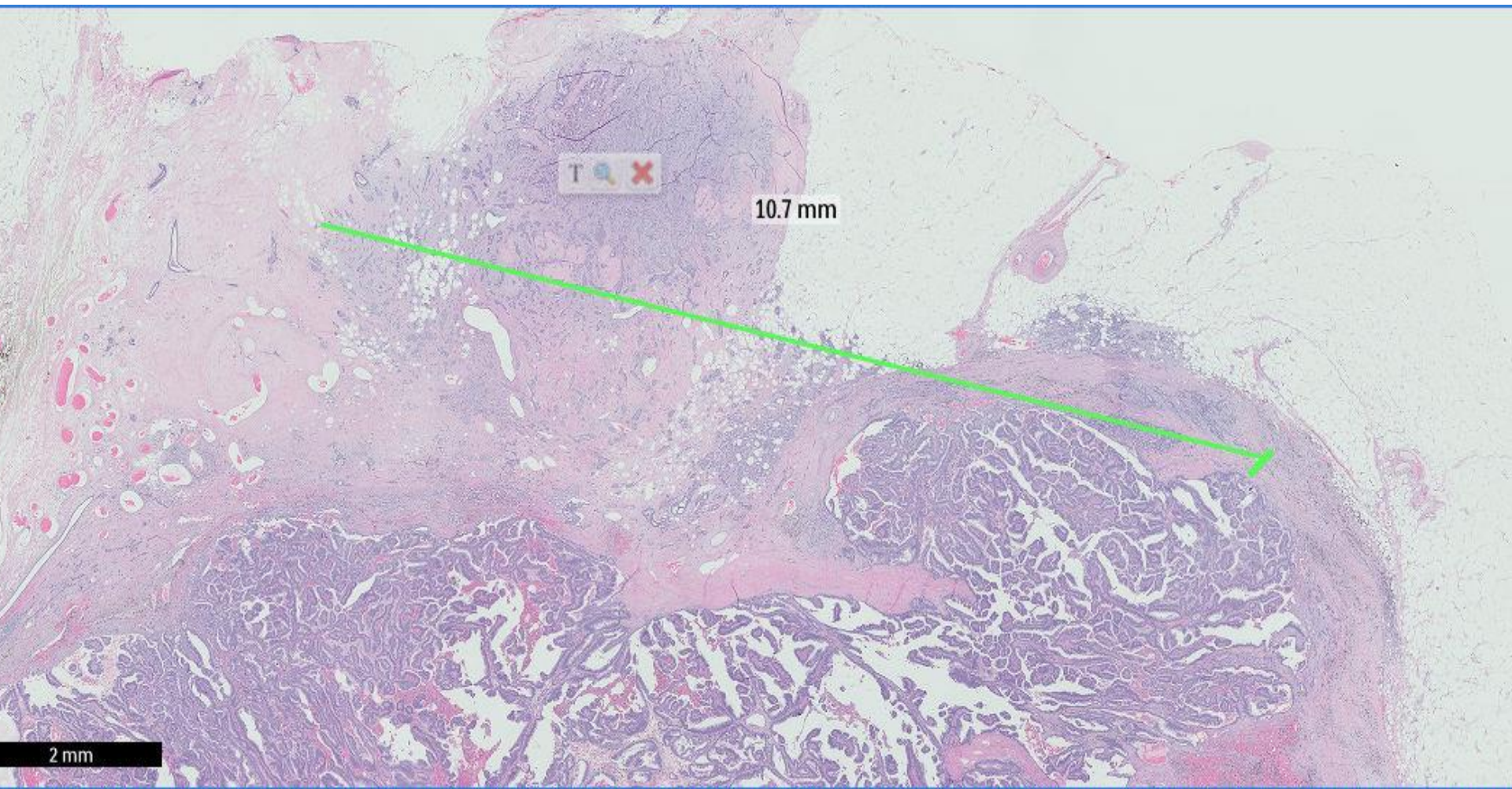


200 μm









T 🔍 ✖

10.7 mm

2 mm



# Diagnosis

Left breast, mastectomy ~

***Encapsulated papillary carcinoma.***

***Invasive ductal carcinoma grade 1, estimated size on this slide is 10.7mm.***

***ER positive, PR positive, cerbB2 negative.***

***Sentinel lymph nodes negative.***



 Breast  
Pathology  
Course 2016



*Pathology Building 1958-2013, by Ong Kim Seng*