

Case 21

70 year old Indian lady underwent a vacuum assisted biopsy of a right breast 1 o'clock periareolar lesion.



▶ Zoom 0.25x

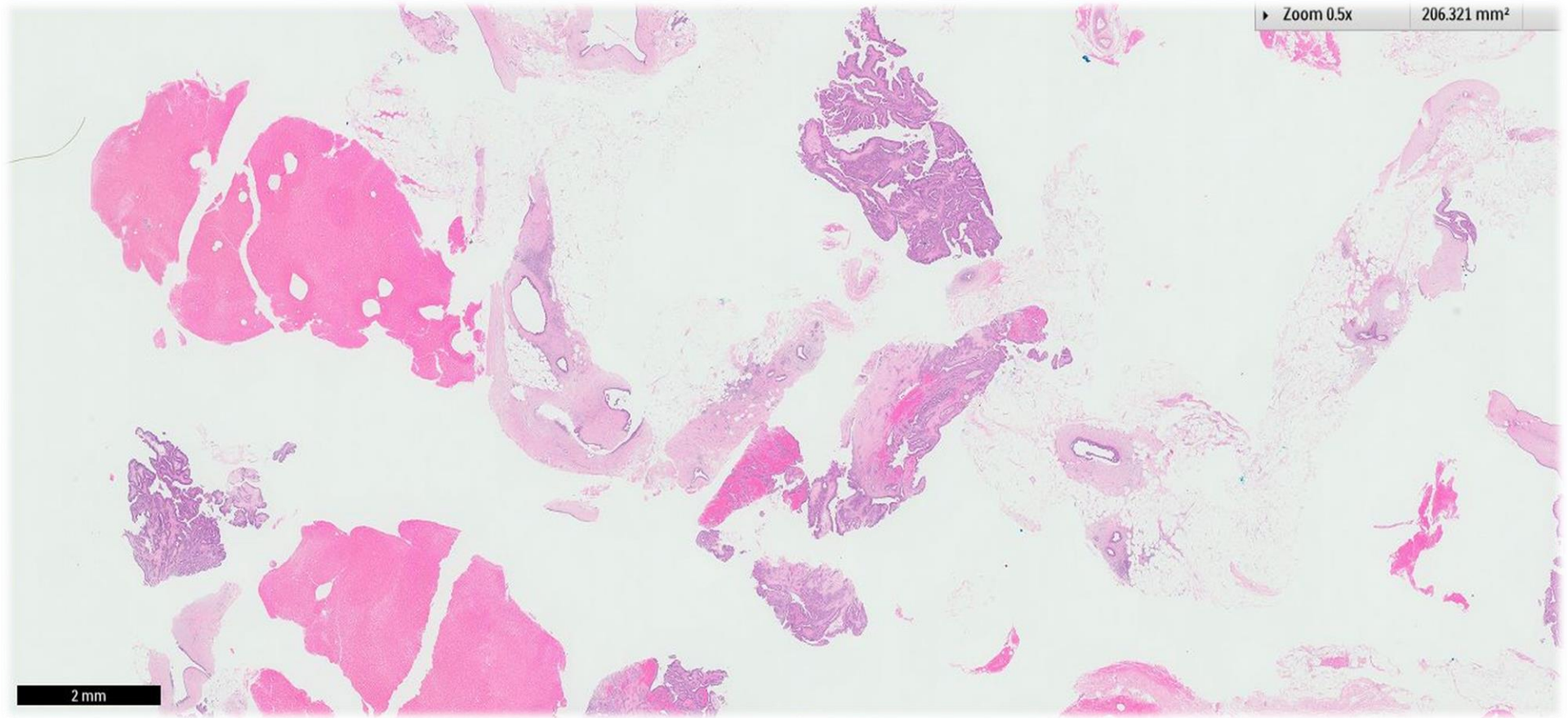
5 mm



Zoom 0.5x

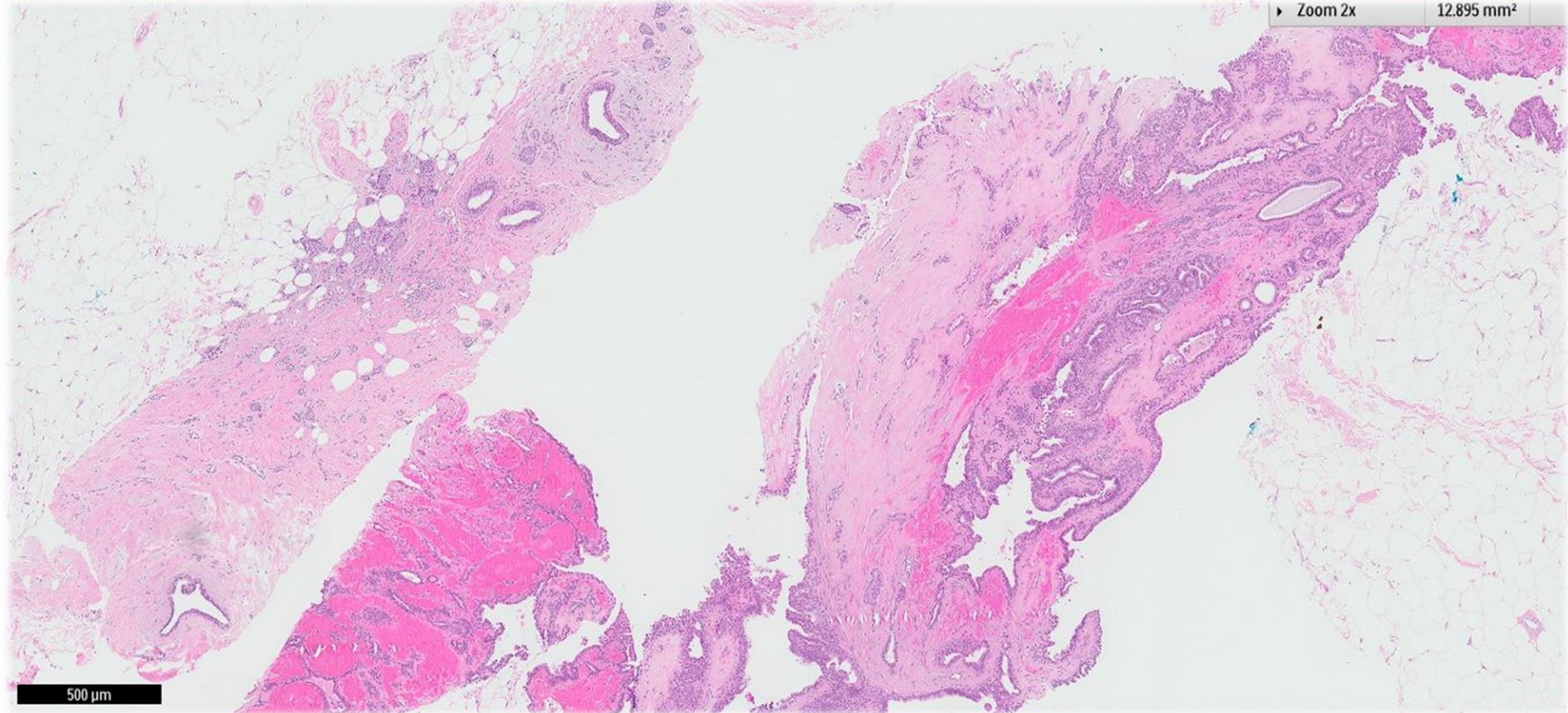
206.321 mm²

2 mm



Zoom 2x

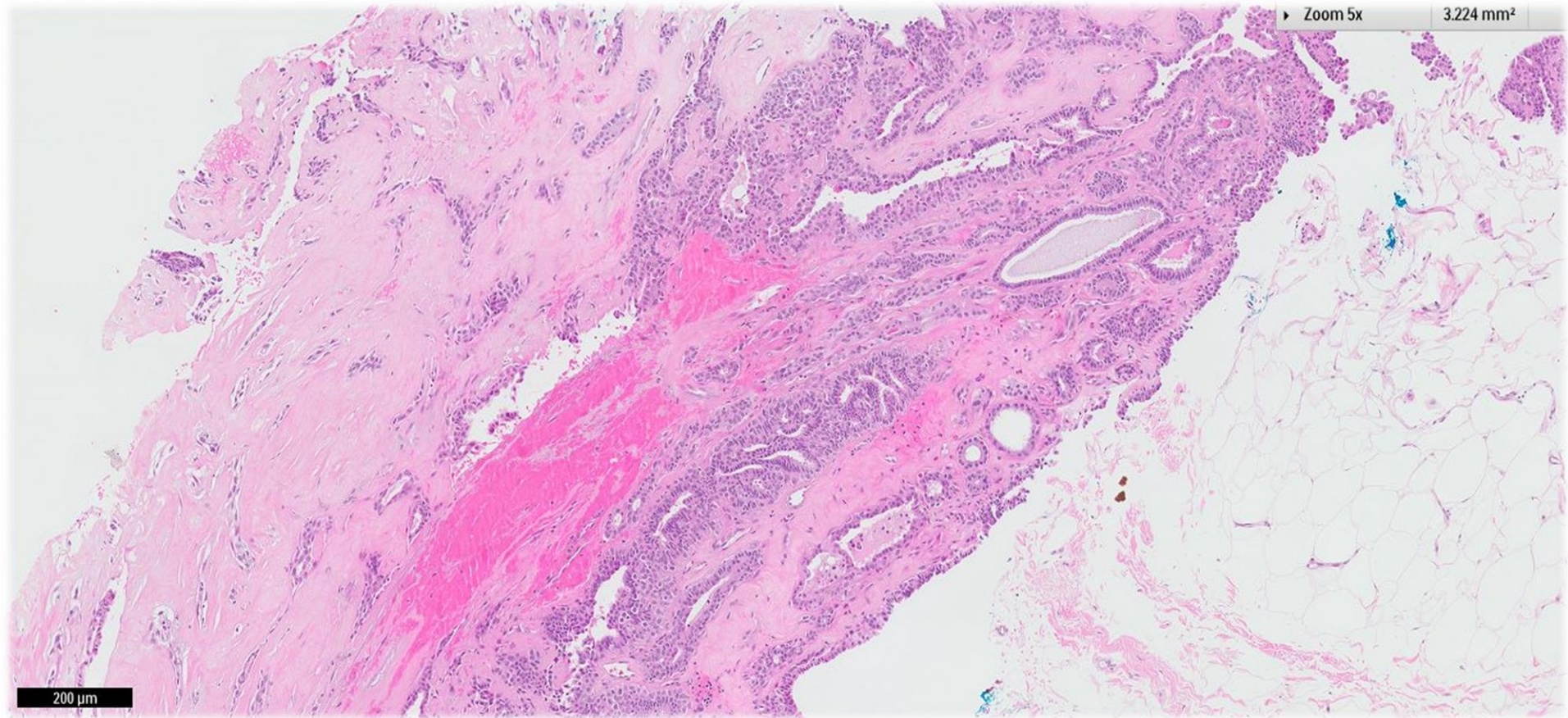
12.895 mm²



500 μ m

▶ Zoom 5x

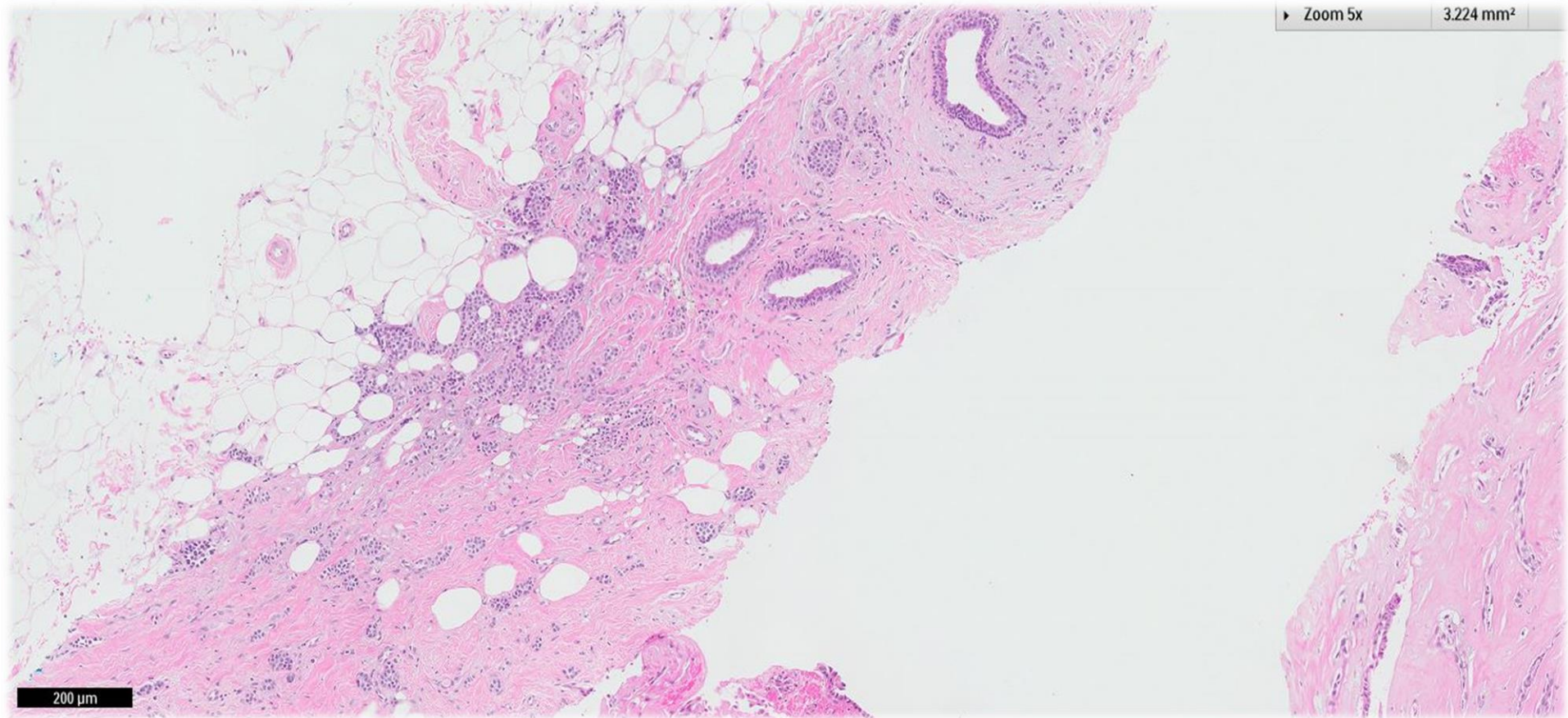
3.224 mm²



200 μm

► Zoom 5x

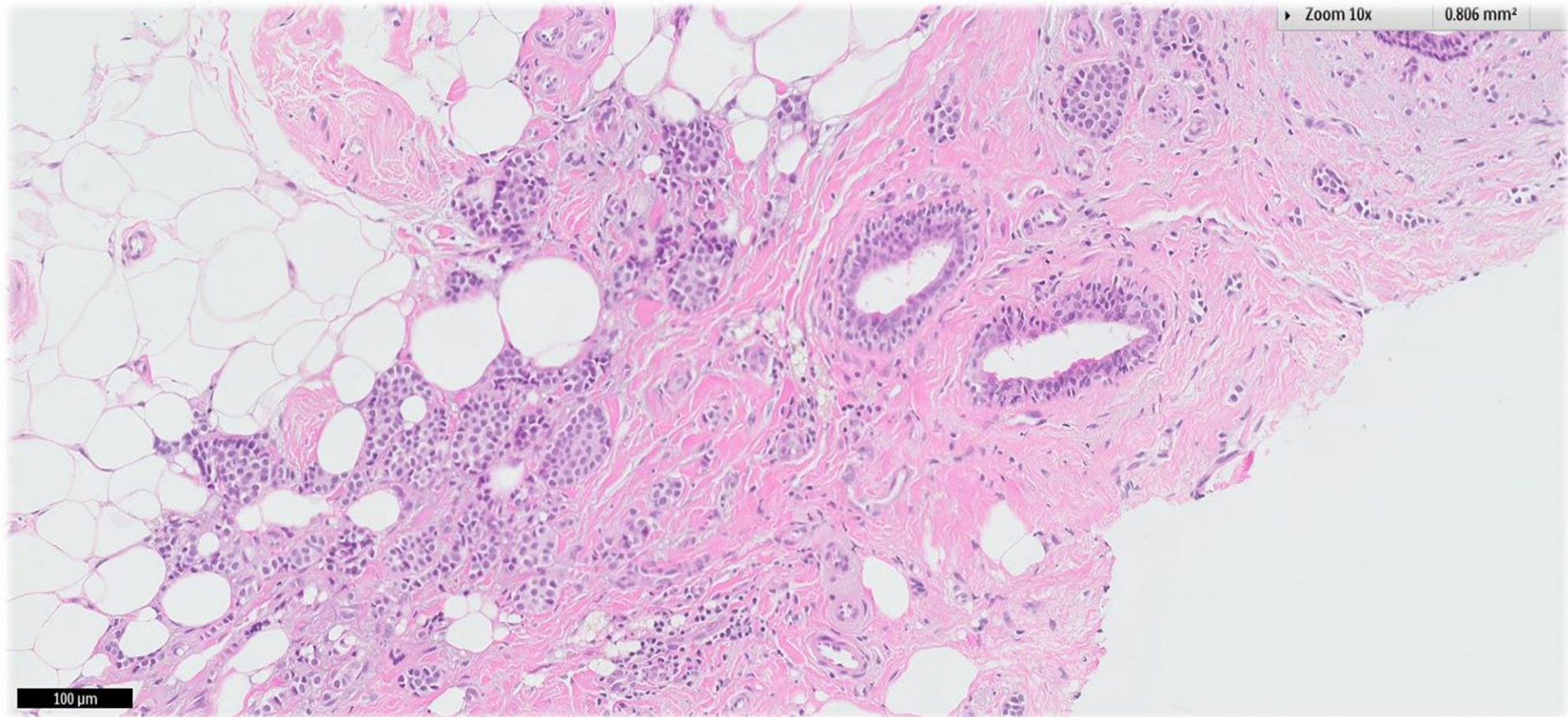
3.224 mm²



200 μ m

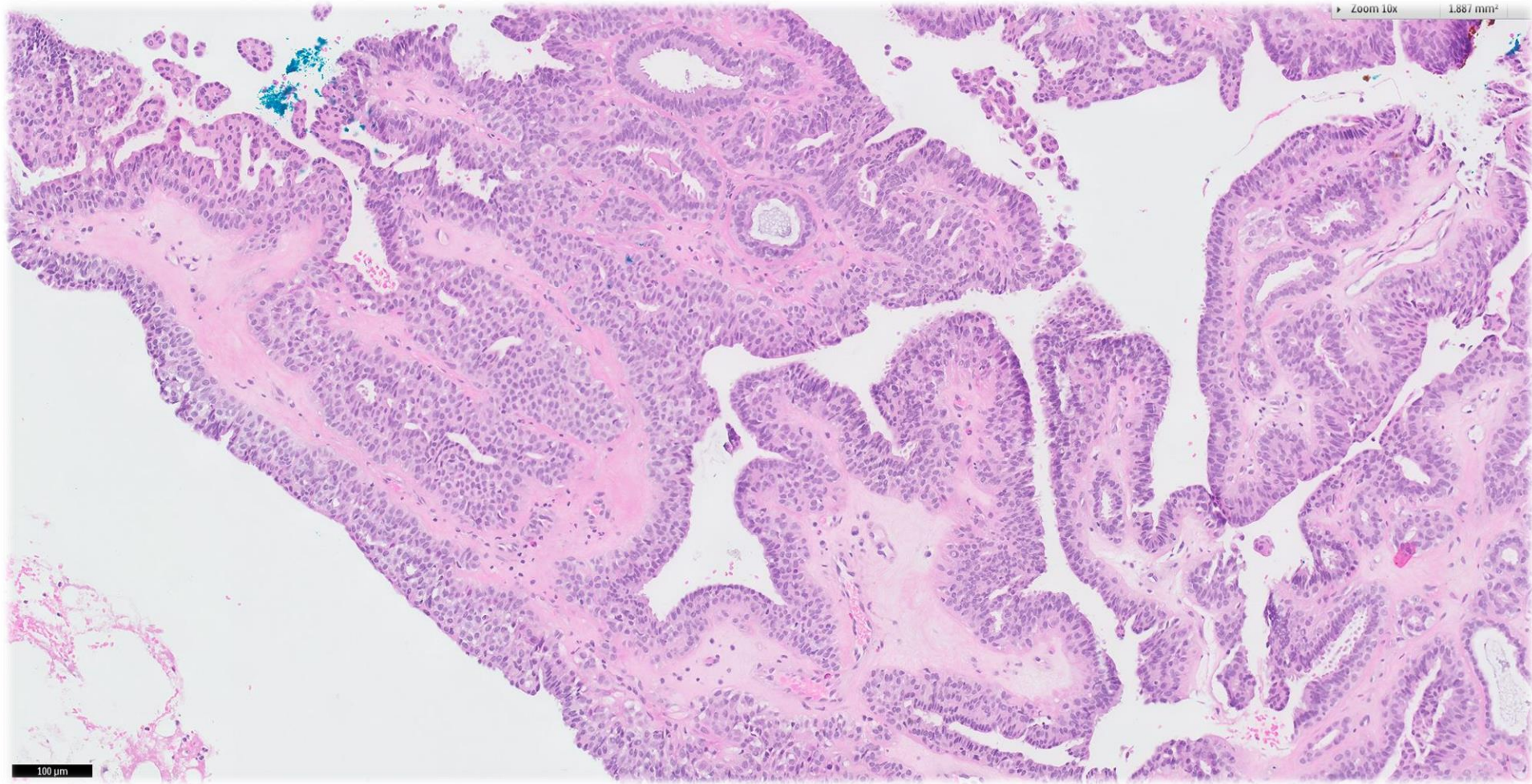
▶ Zoom 10x

0.806 mm²

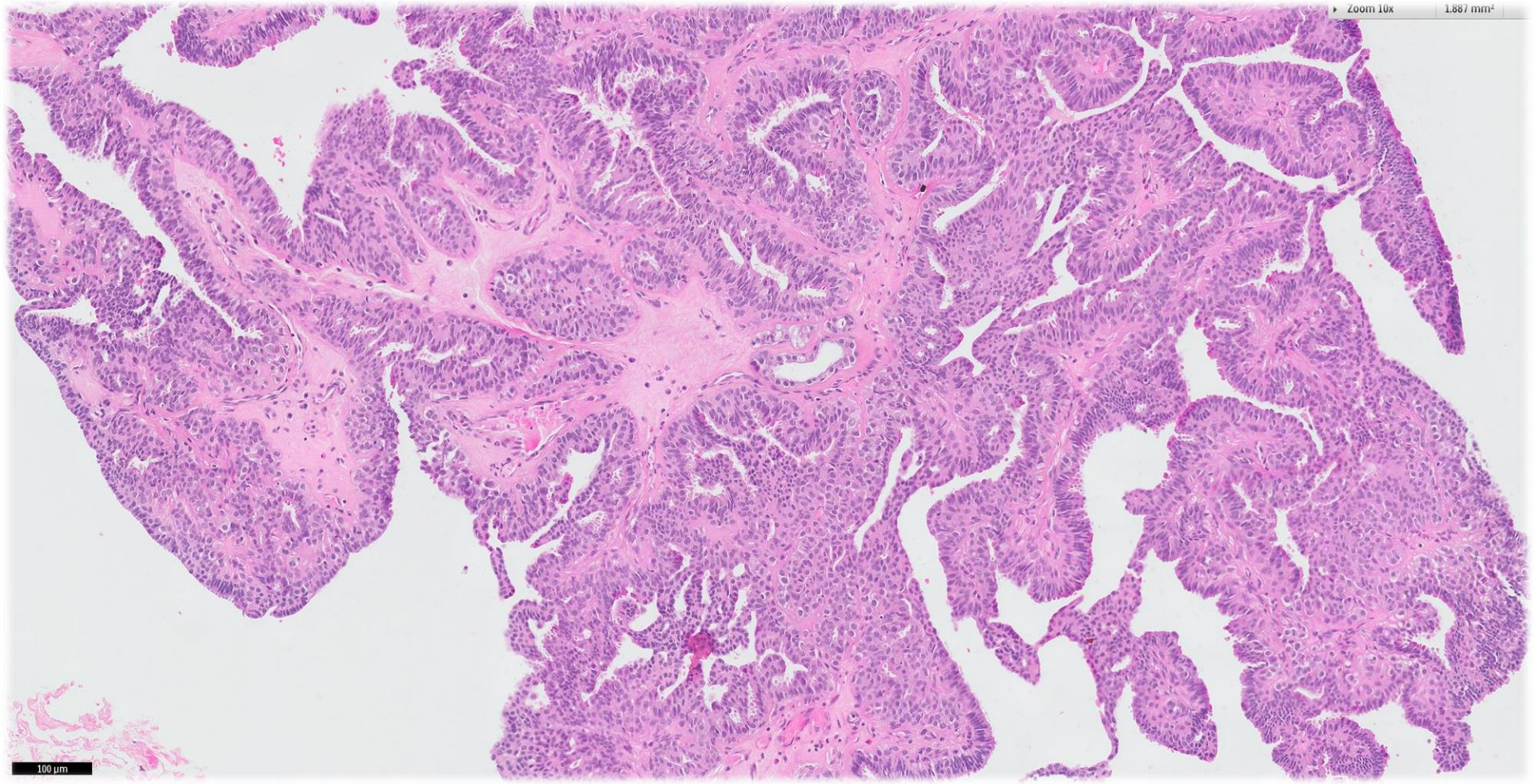


100 μm

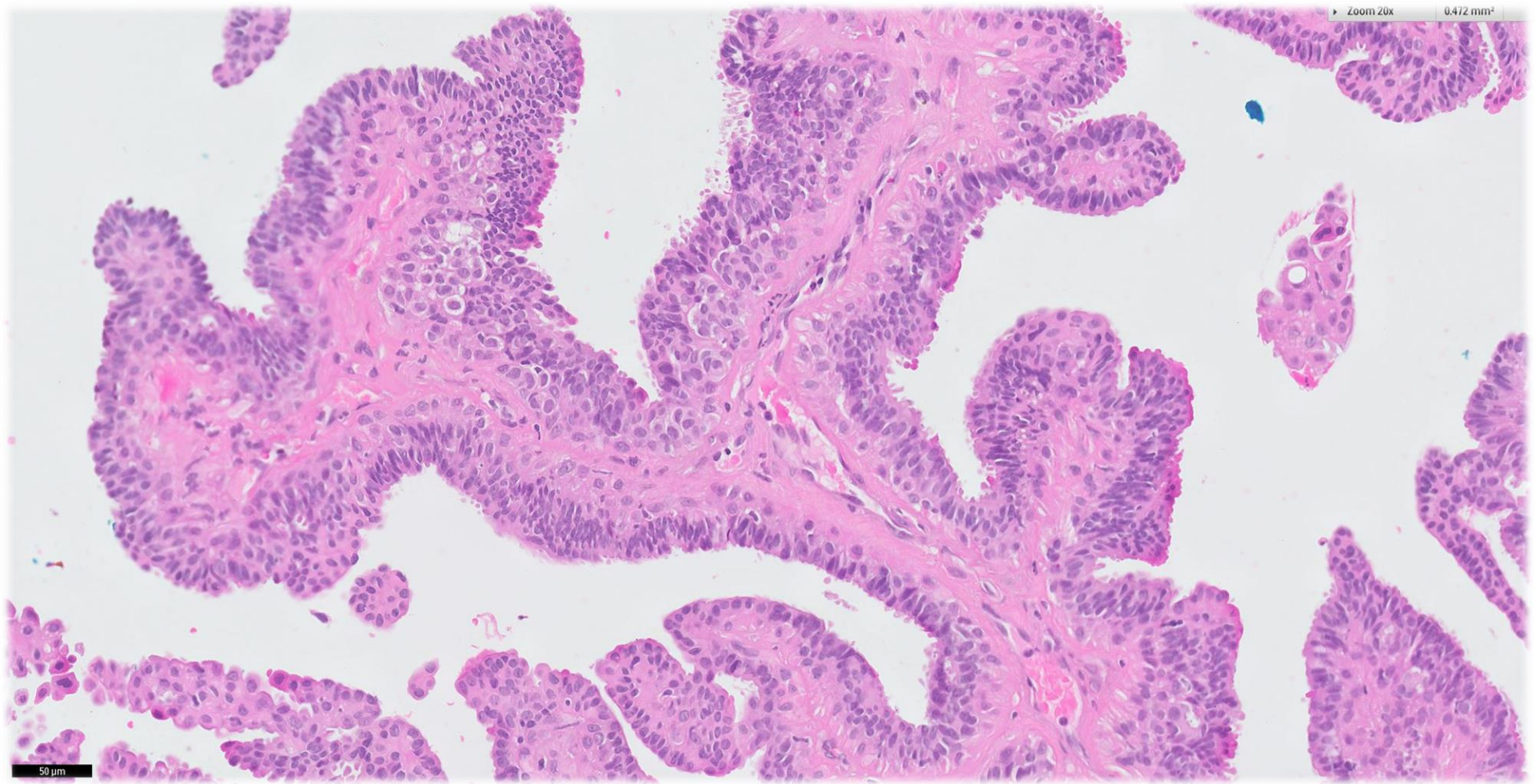


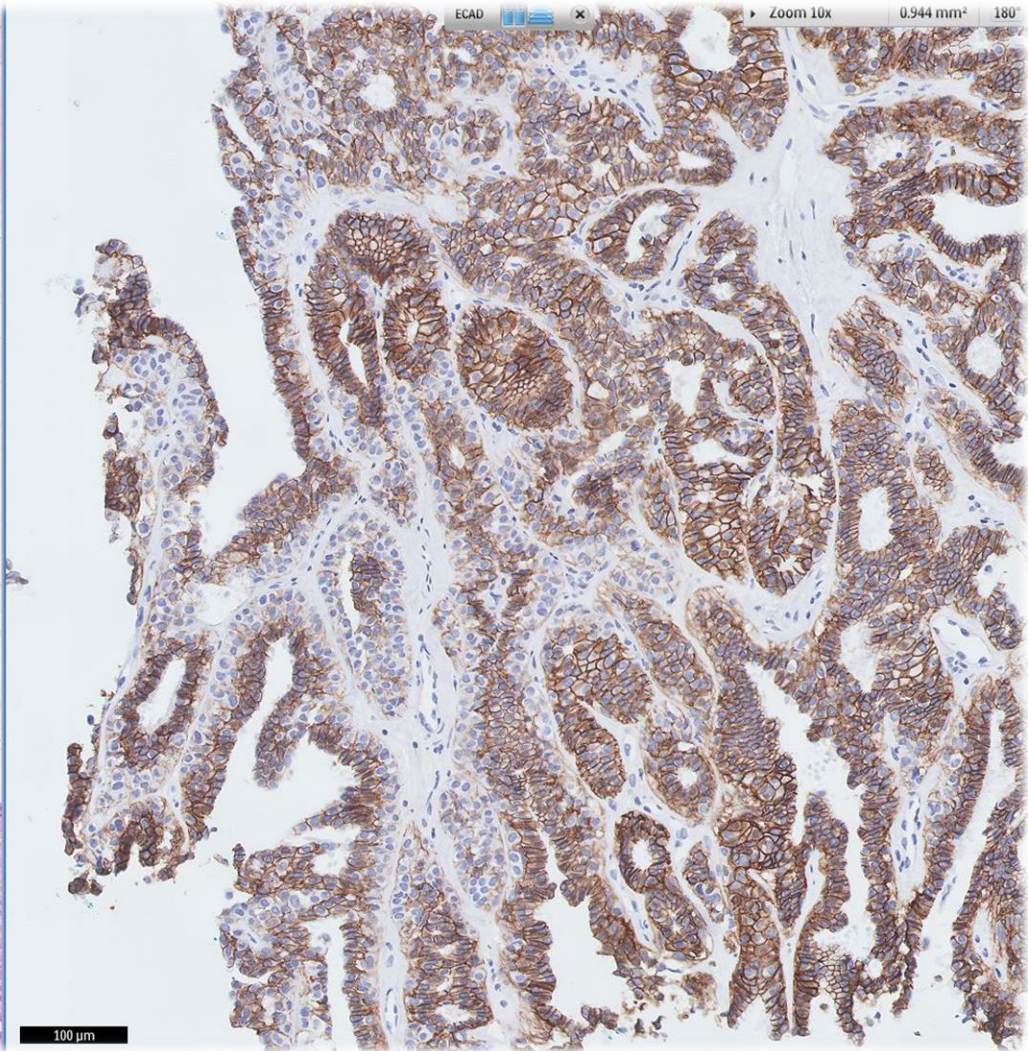
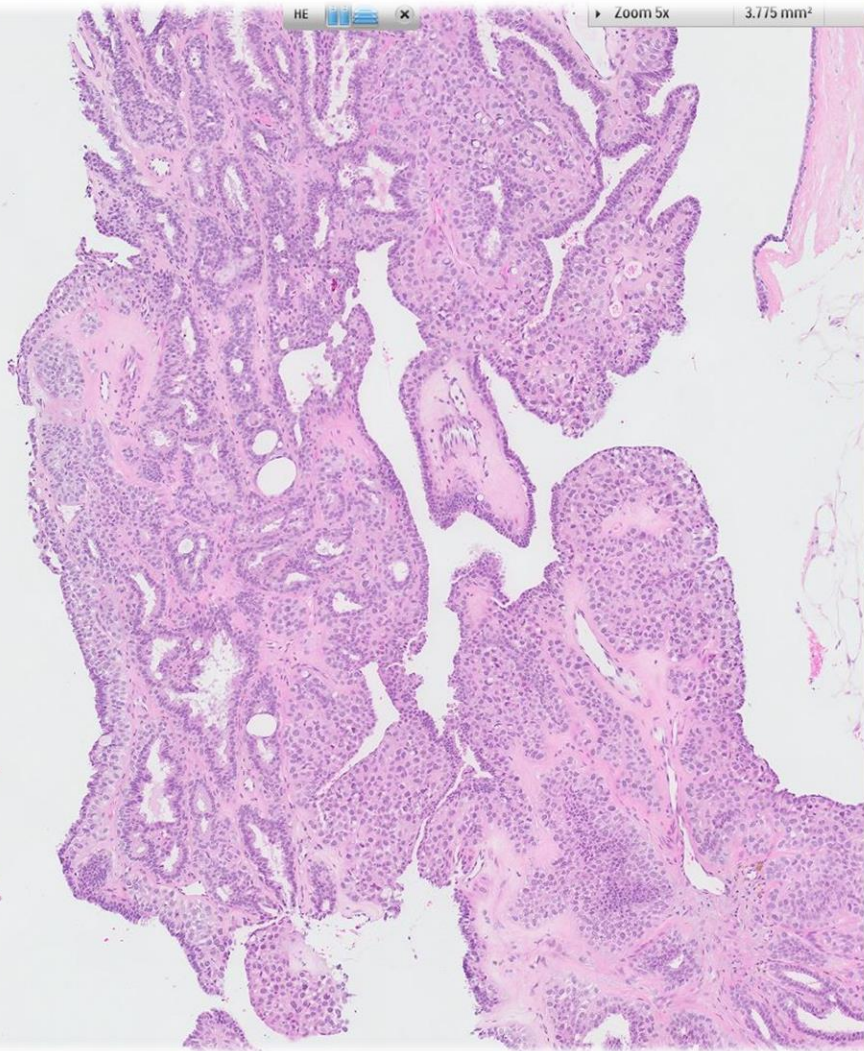


100 μm

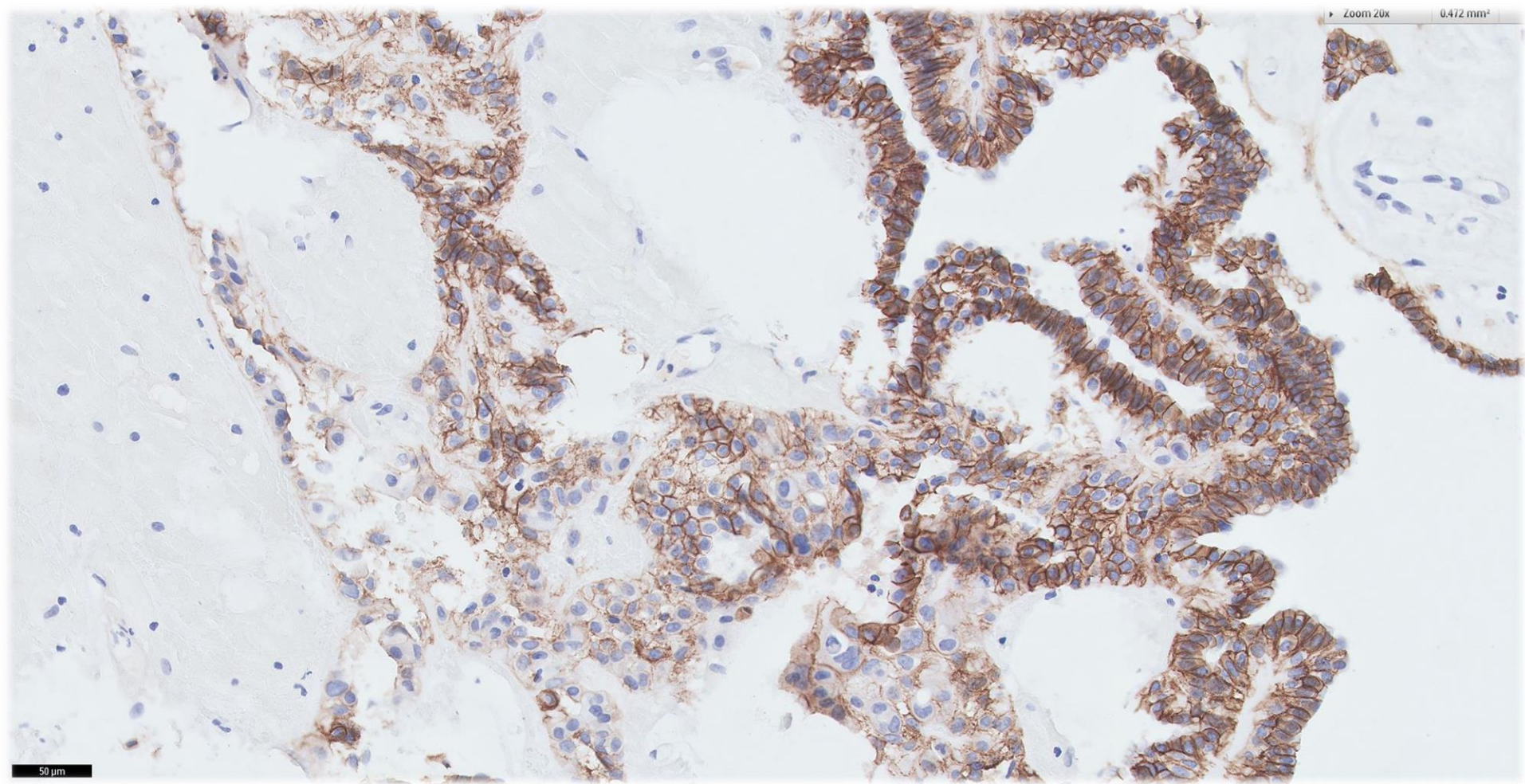


100 μm

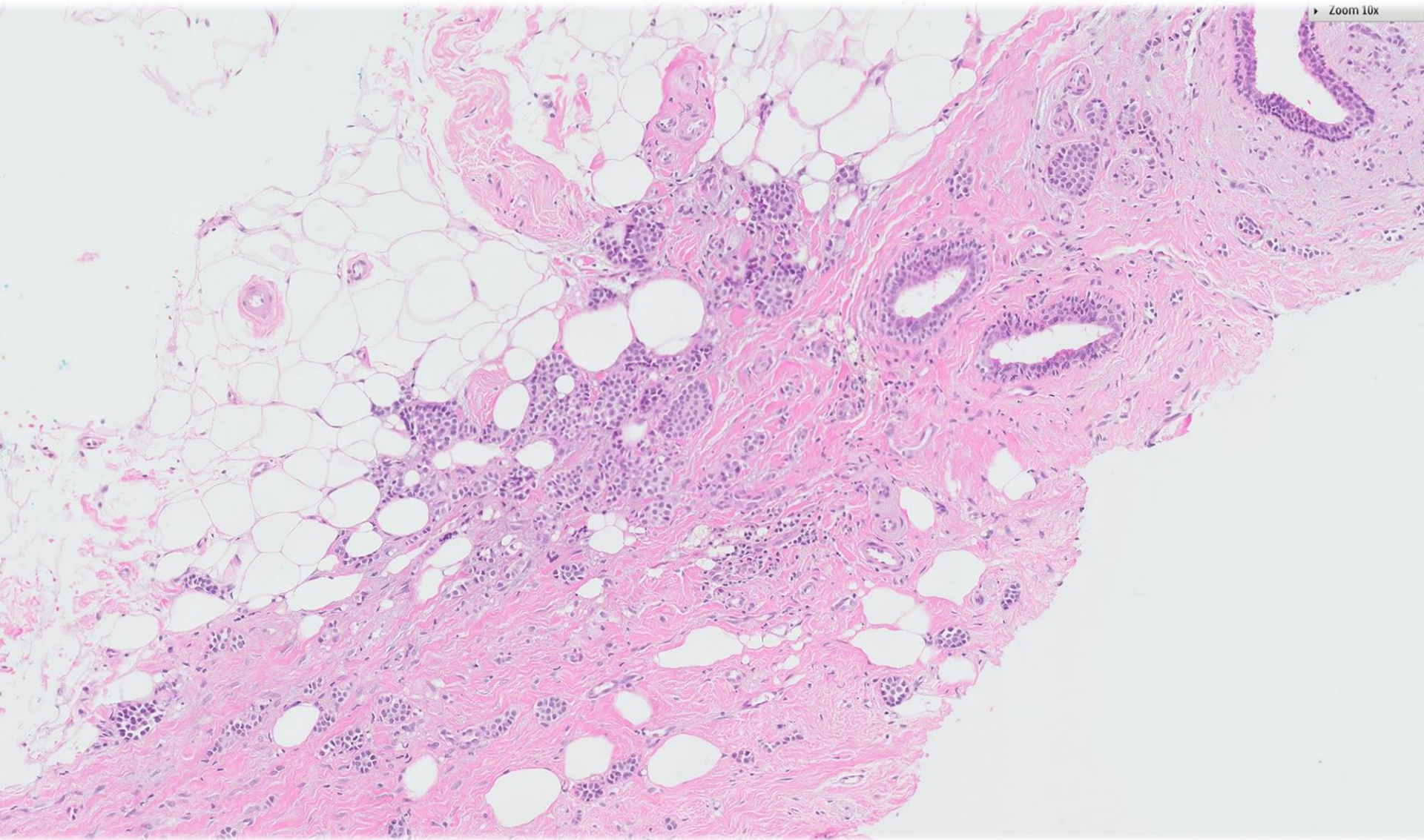


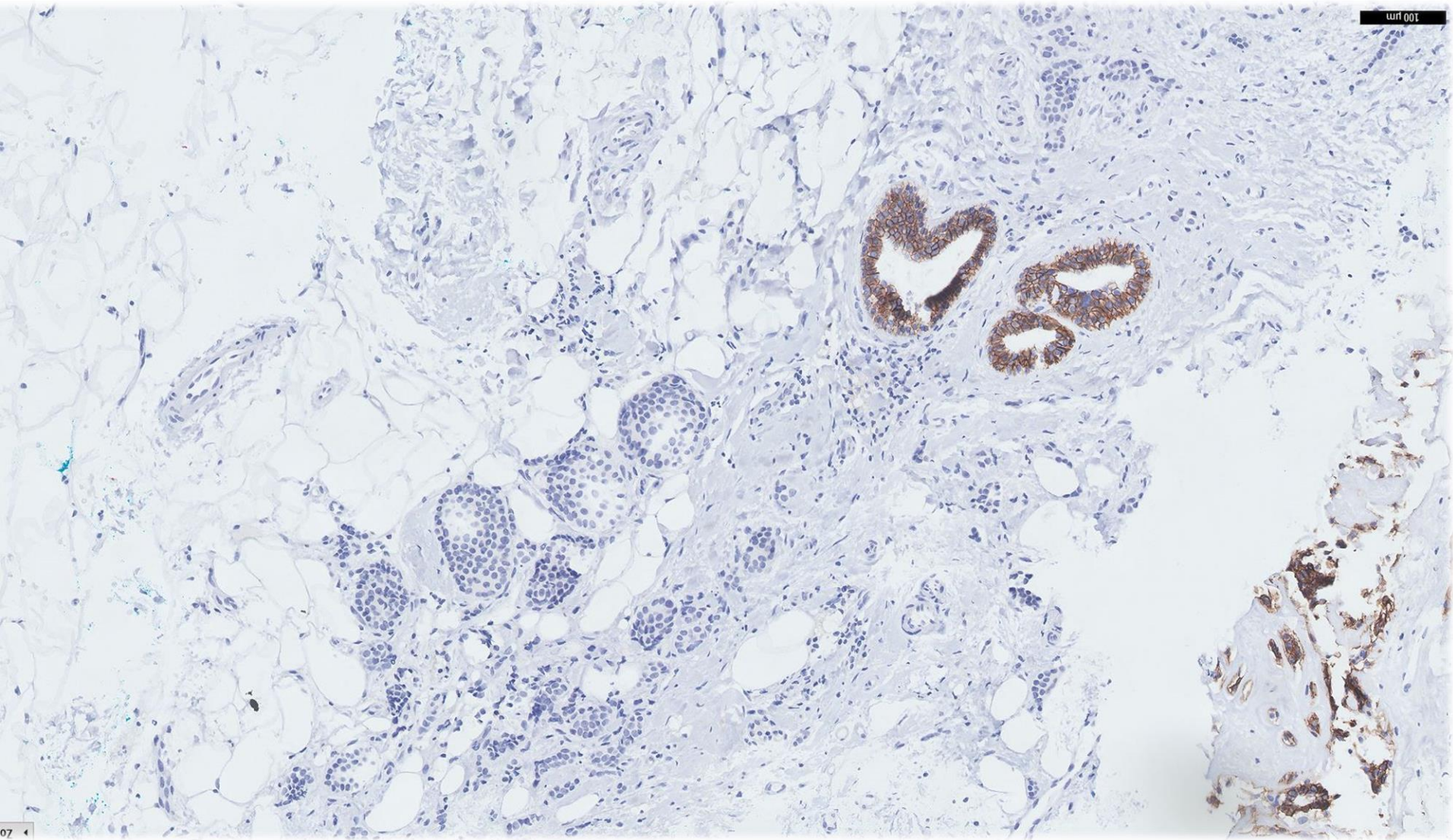


E-cadherin

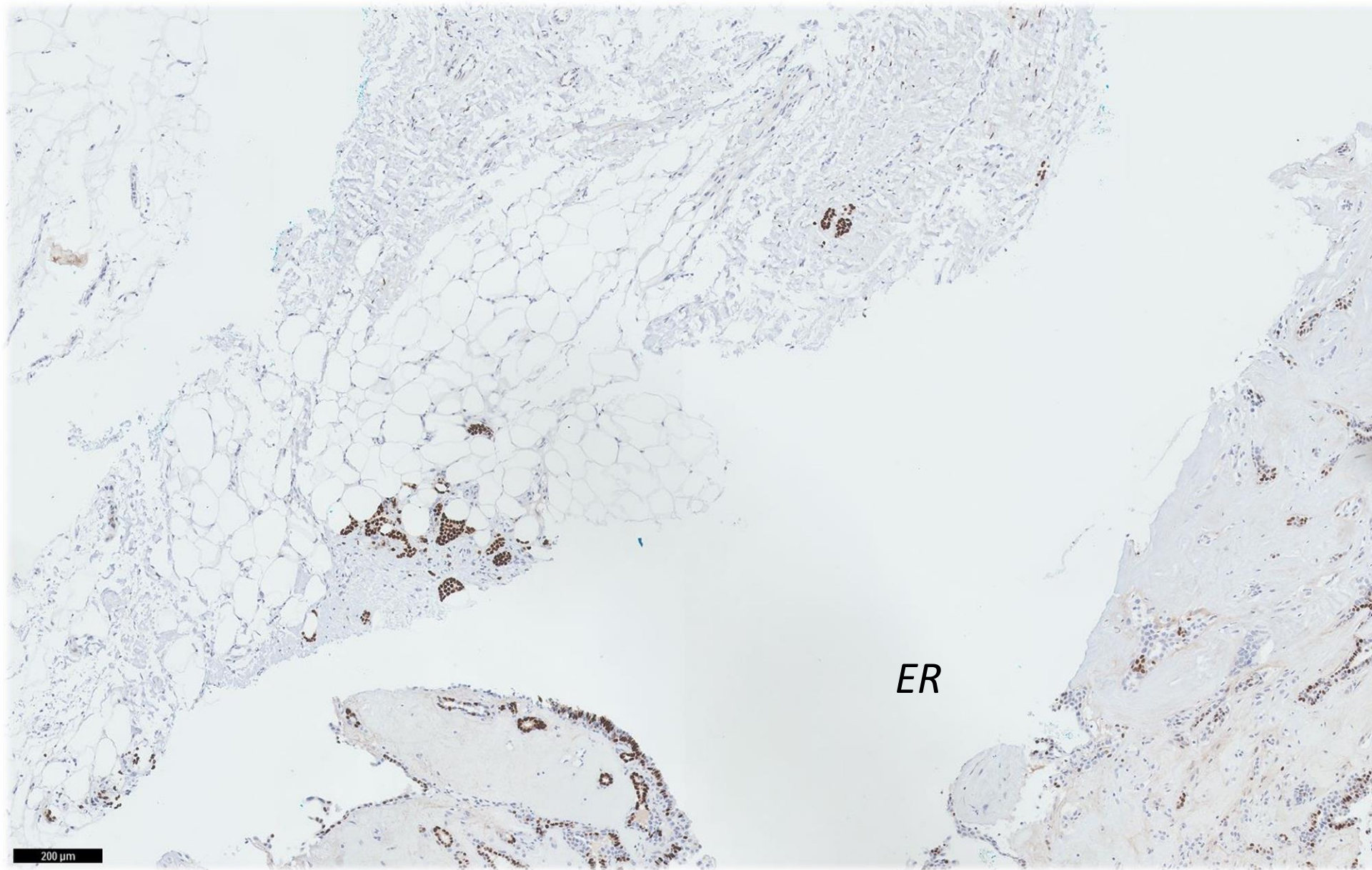


E-cadherin



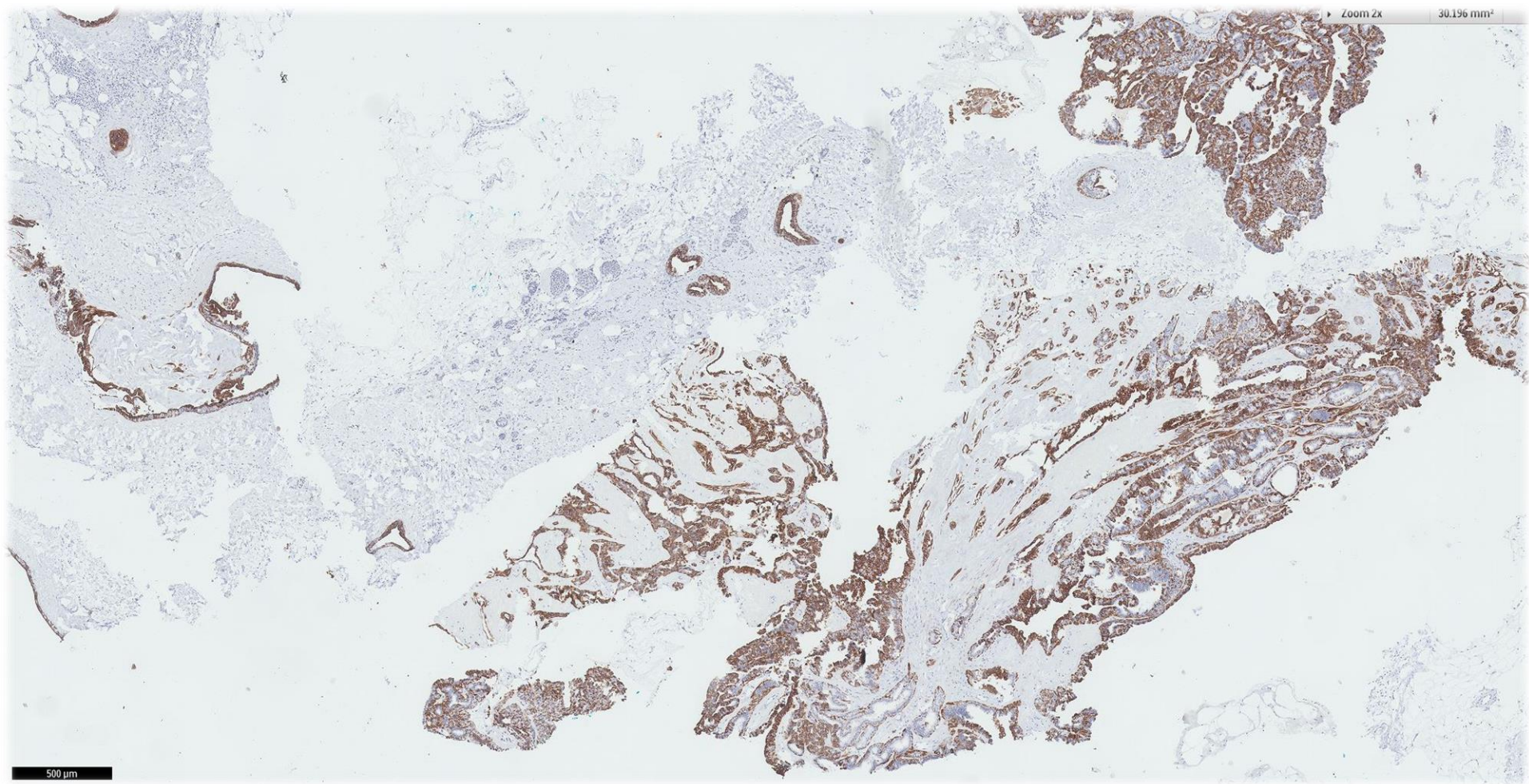


E-cadherin

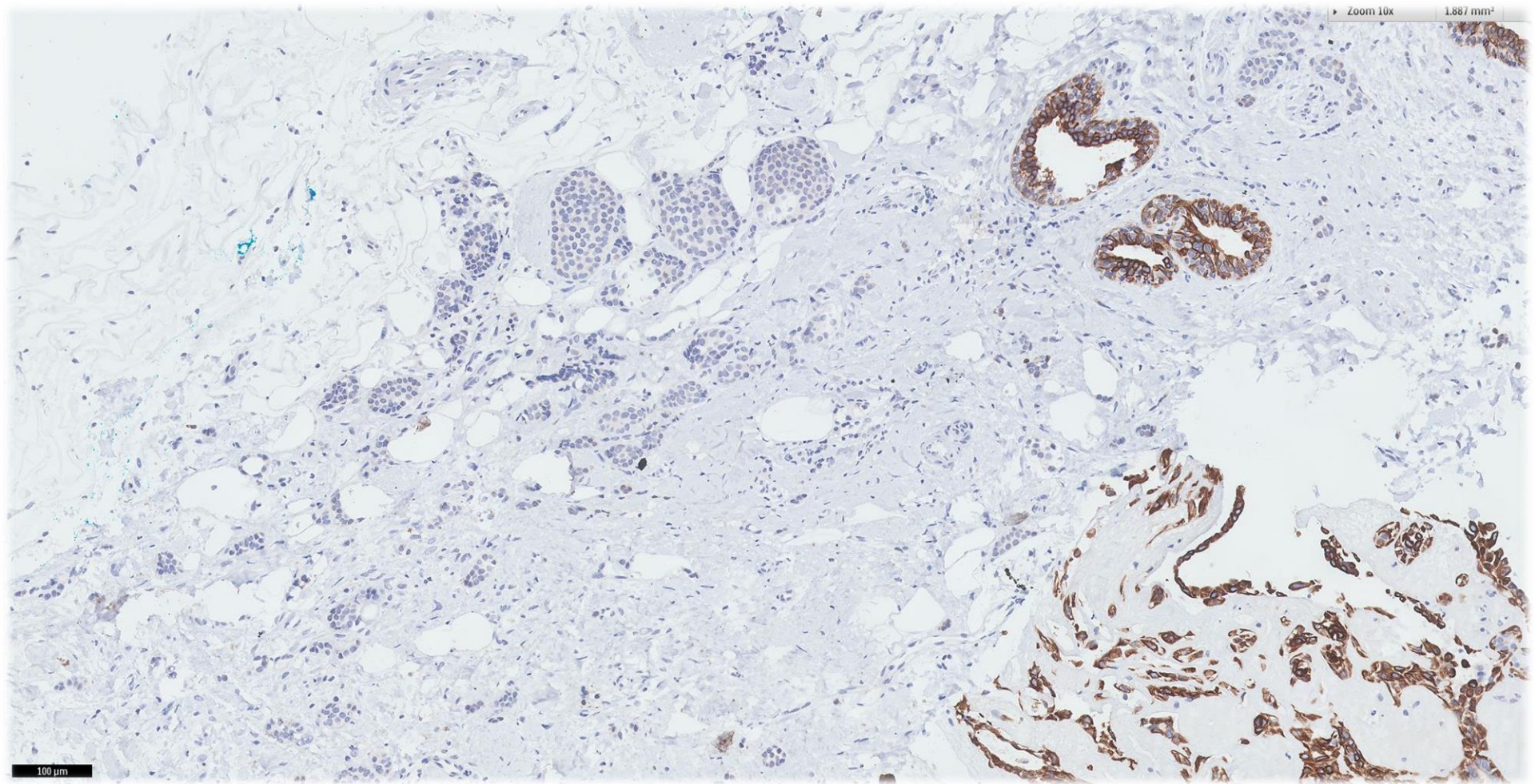


ER

200 μm



CK5/6



CK5/6

Diagnosis

- Intraductal papillary lesion with lobular neoplasia.
- Invasive carcinoma with lobular features, 3mm, ER positive, PR positive, cerbB2 negative.



