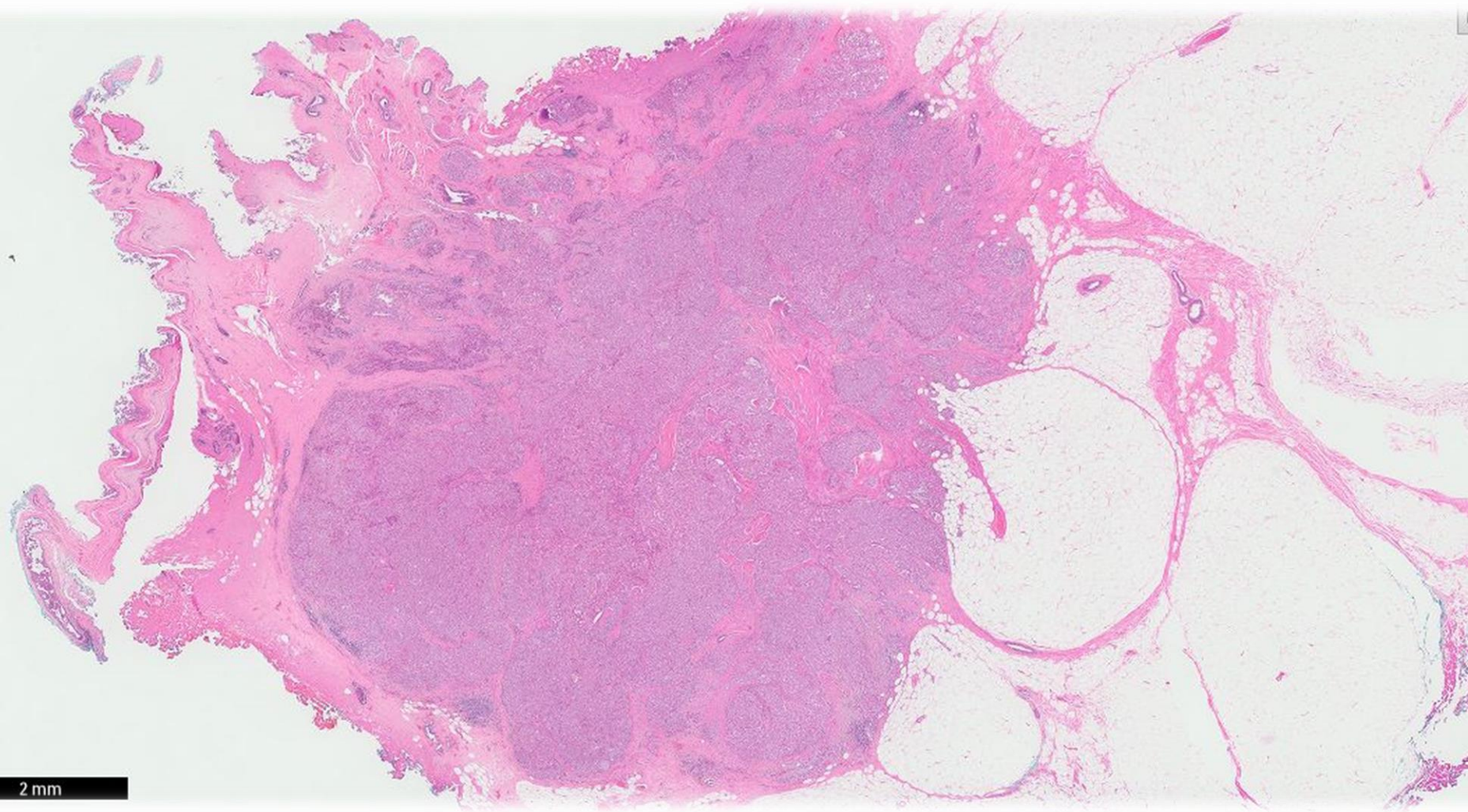


Case 17

Adult lady with a breast tumour.

{Case courtesy of Dr Chih-Jung Chen}

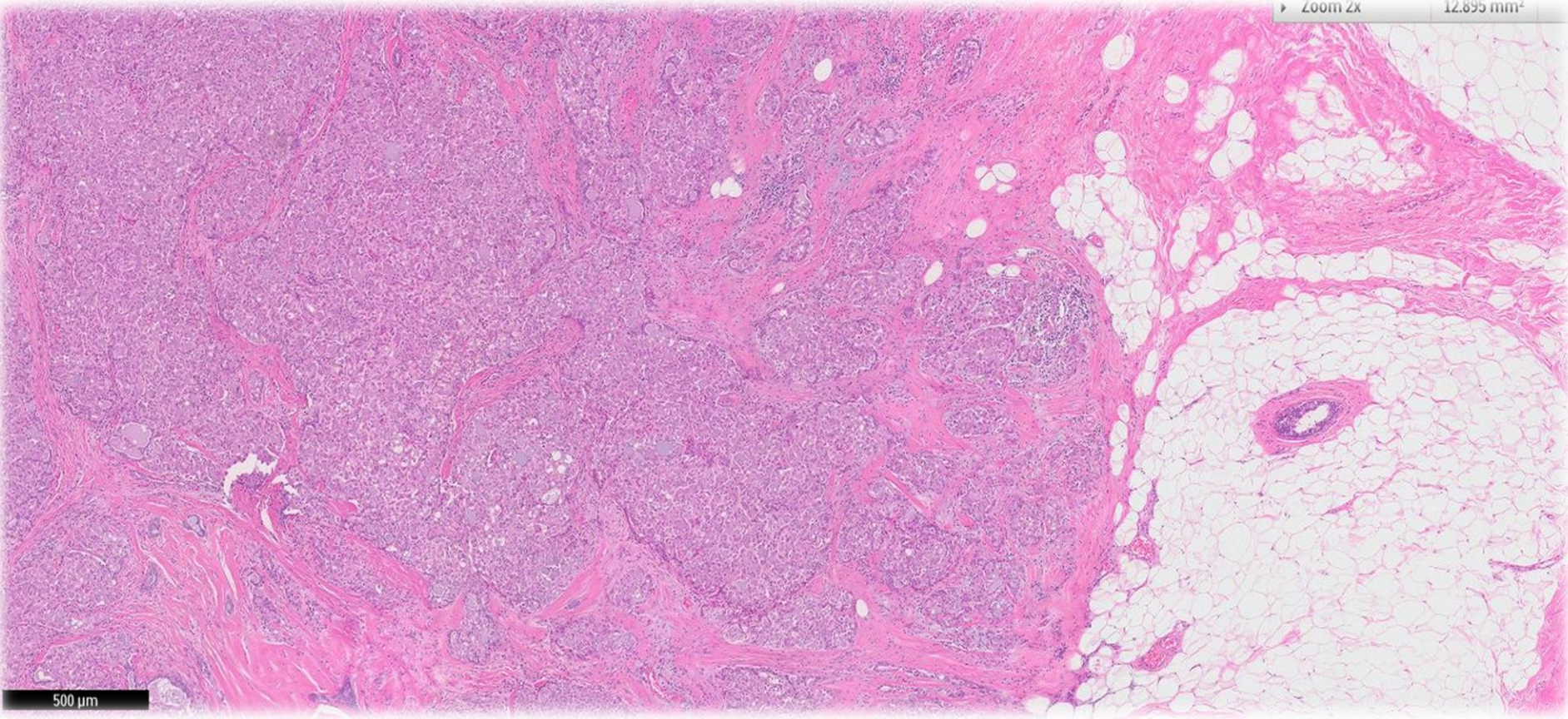




2 mm

Zoom 2x

12.895 mm²

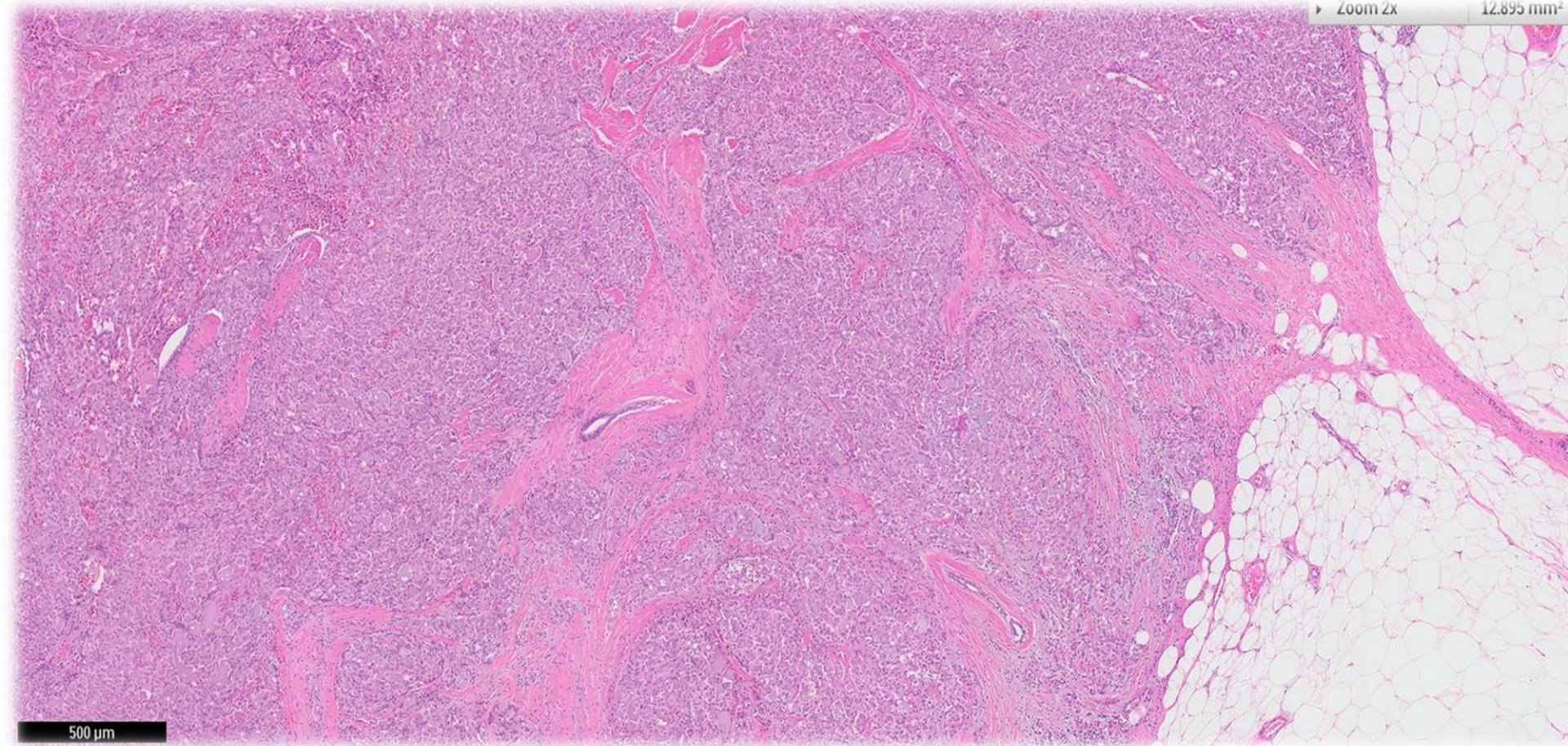


500 μm

Zoom 2x

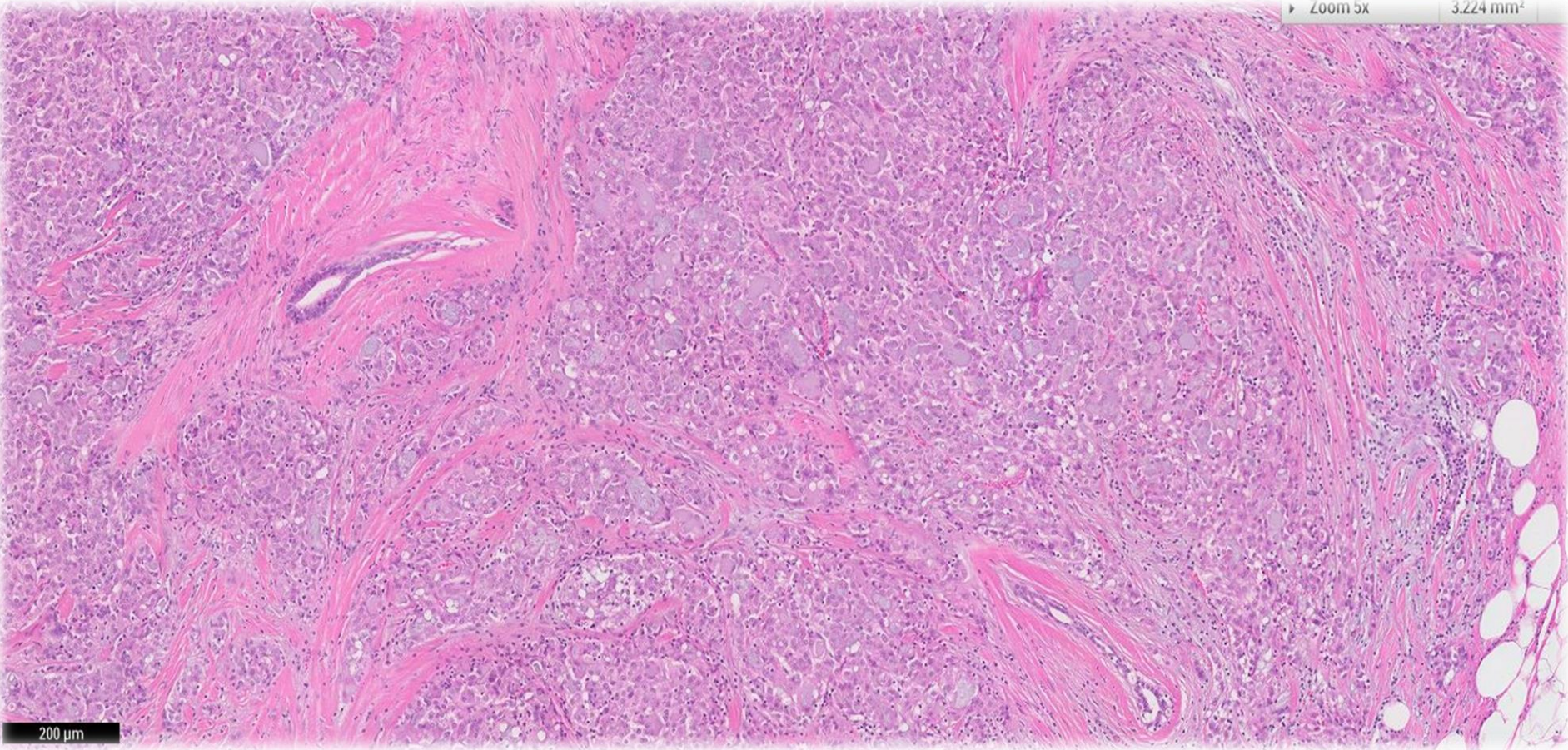
12.895 mm²

500 μ m



► Zoom 5x

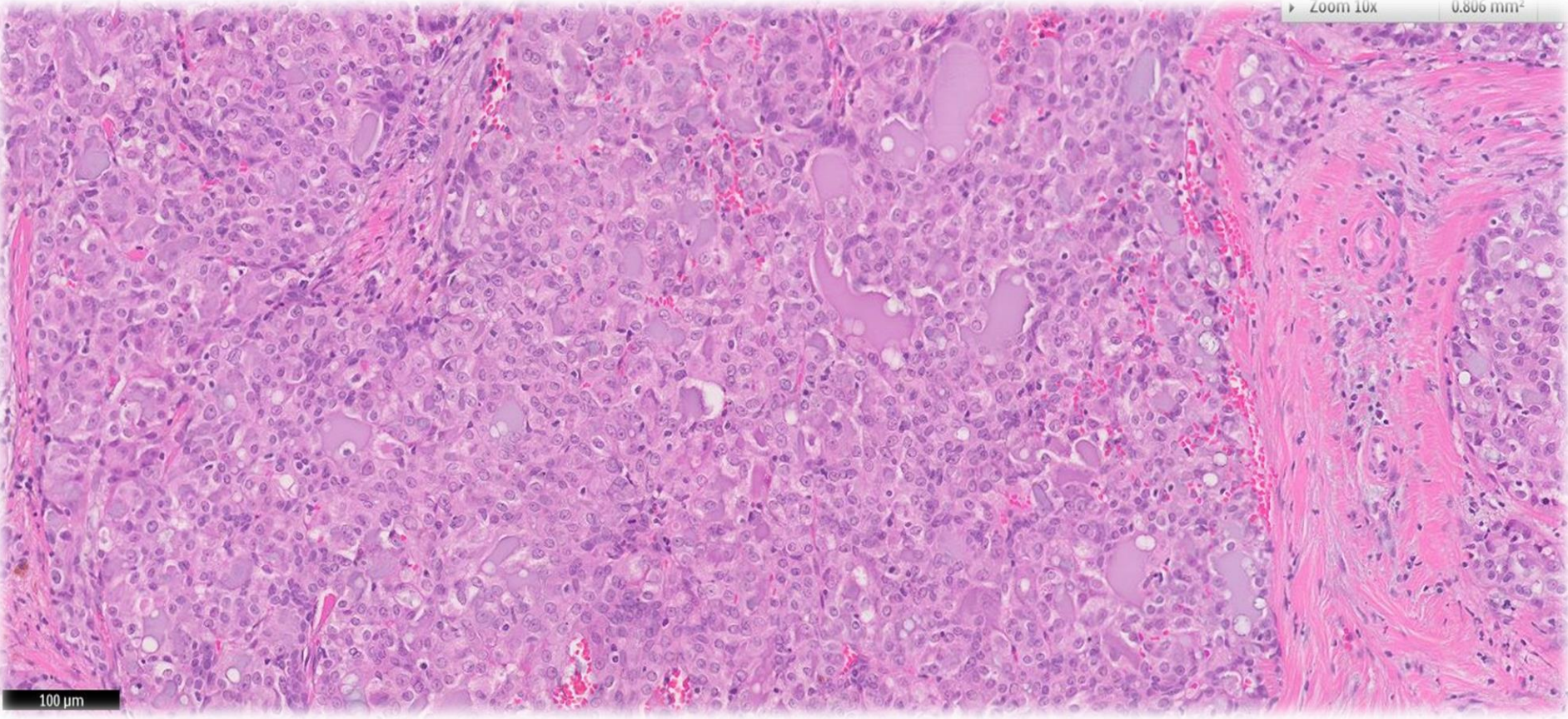
3.224 mm²



200 μm

▶ Zoom 10x

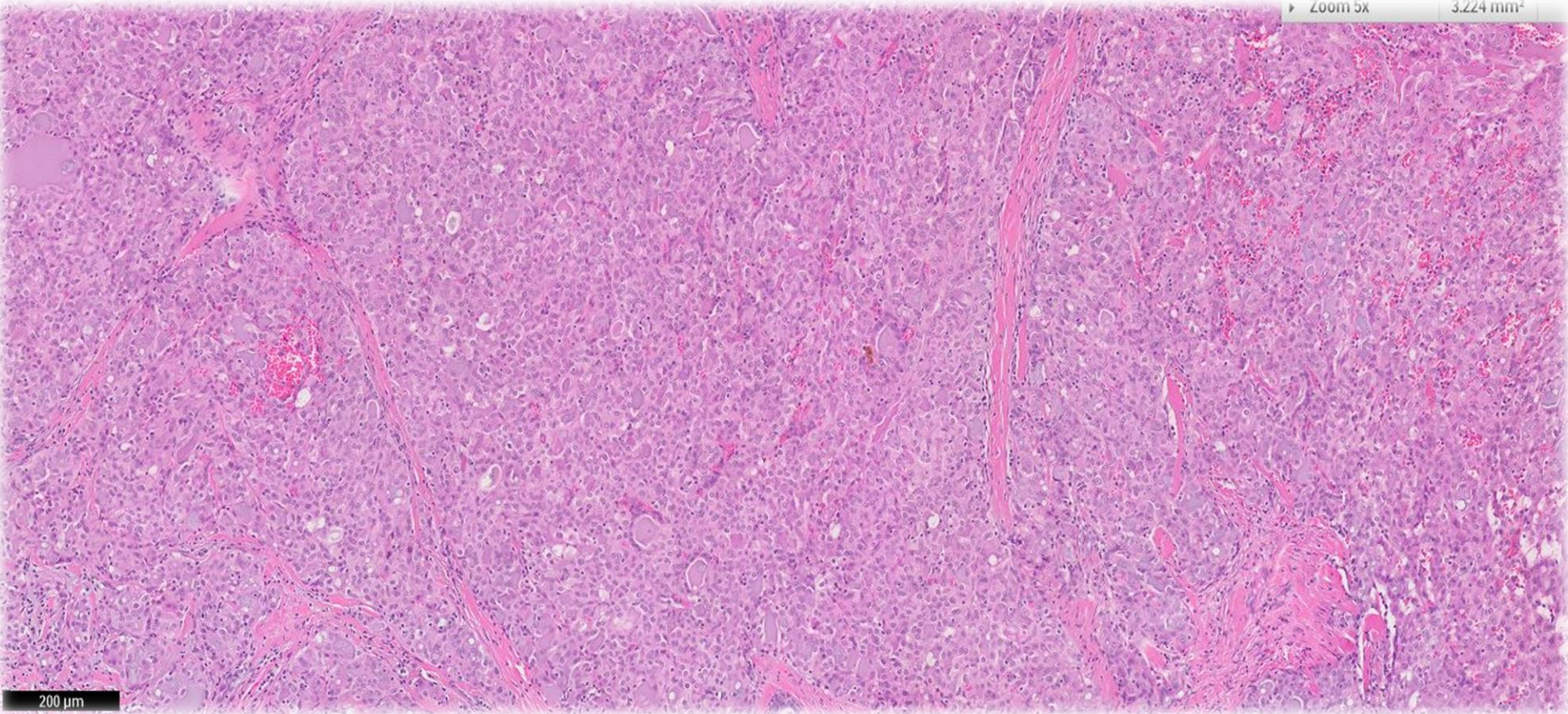
0.806 mm²



100 μm

▶ Zoom 5x

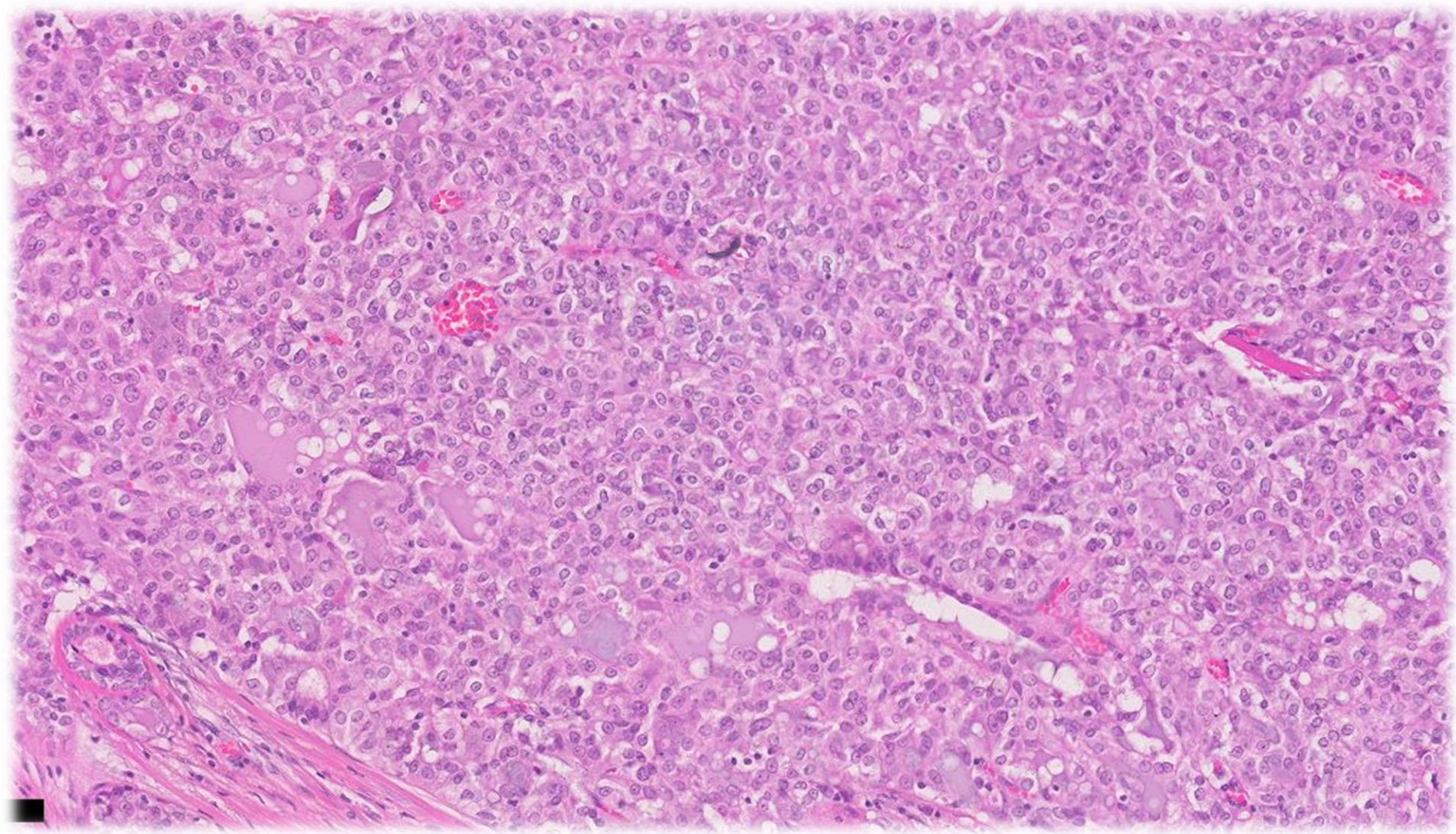
3.224 mm²

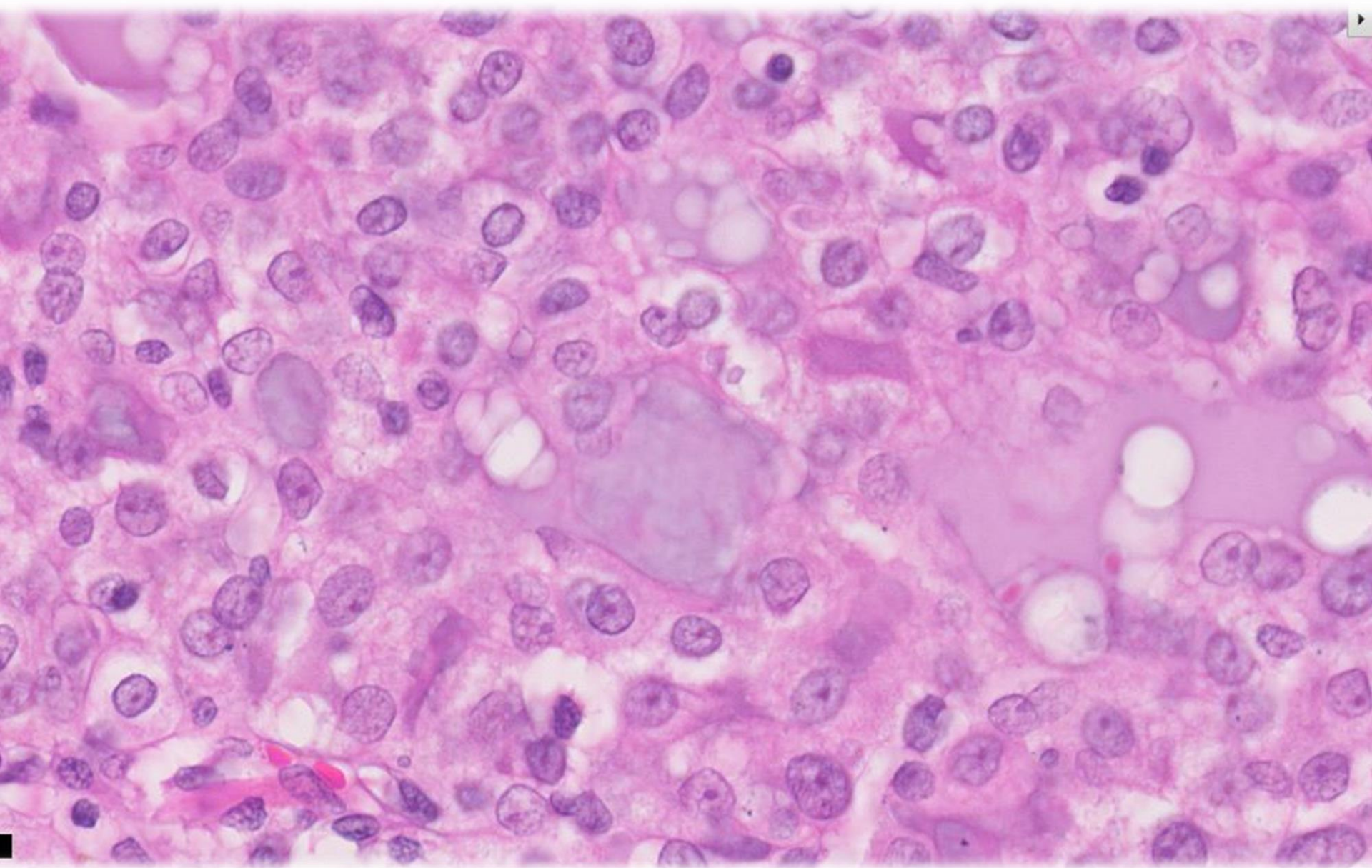


200 μm

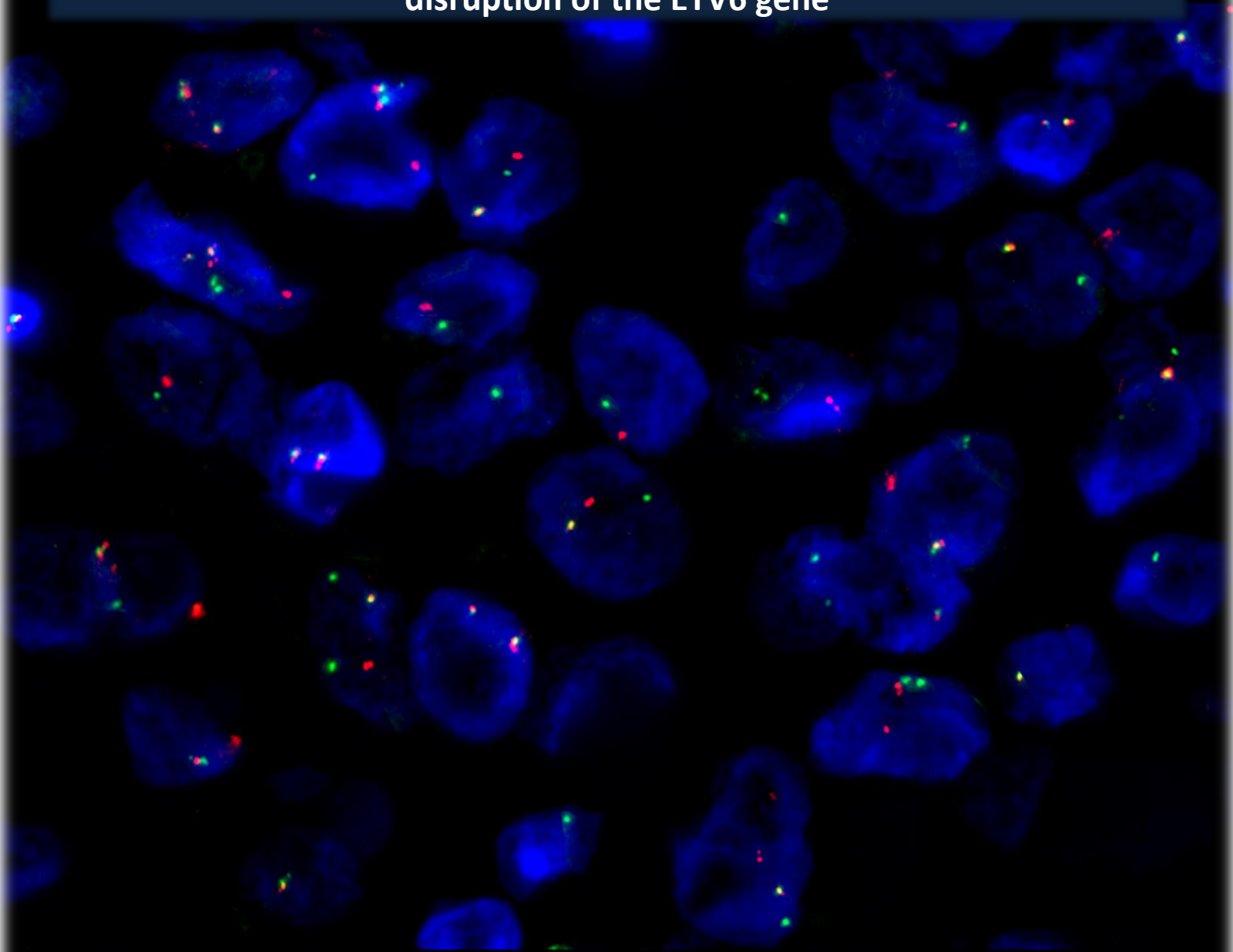
View of SGH campus from Rabbit Stash, Wangz Hotel







Interphase FISH using ETV6 breakpoint rearrangement probe shows disruption of the ETV6 gene



Courtesy of Cytogenetics Lab, Pathology SGH

Diagnosis

- Secretory carcinoma



Secretory carcinoma

- A rare, low-grade, translocation-associated invasive carcinoma that shows solid, microcystic and tubular architectures.
- Synonym: *juvenile breast carcinoma*.
- Accounts for <0.15% of all breast cancers.
- Affects both males and females.
- Median age of presentation is 25 years (range, 3–87 years).
- Clinically well-circumscribed & mobile masses, often located near the areola, especially in men and children.

