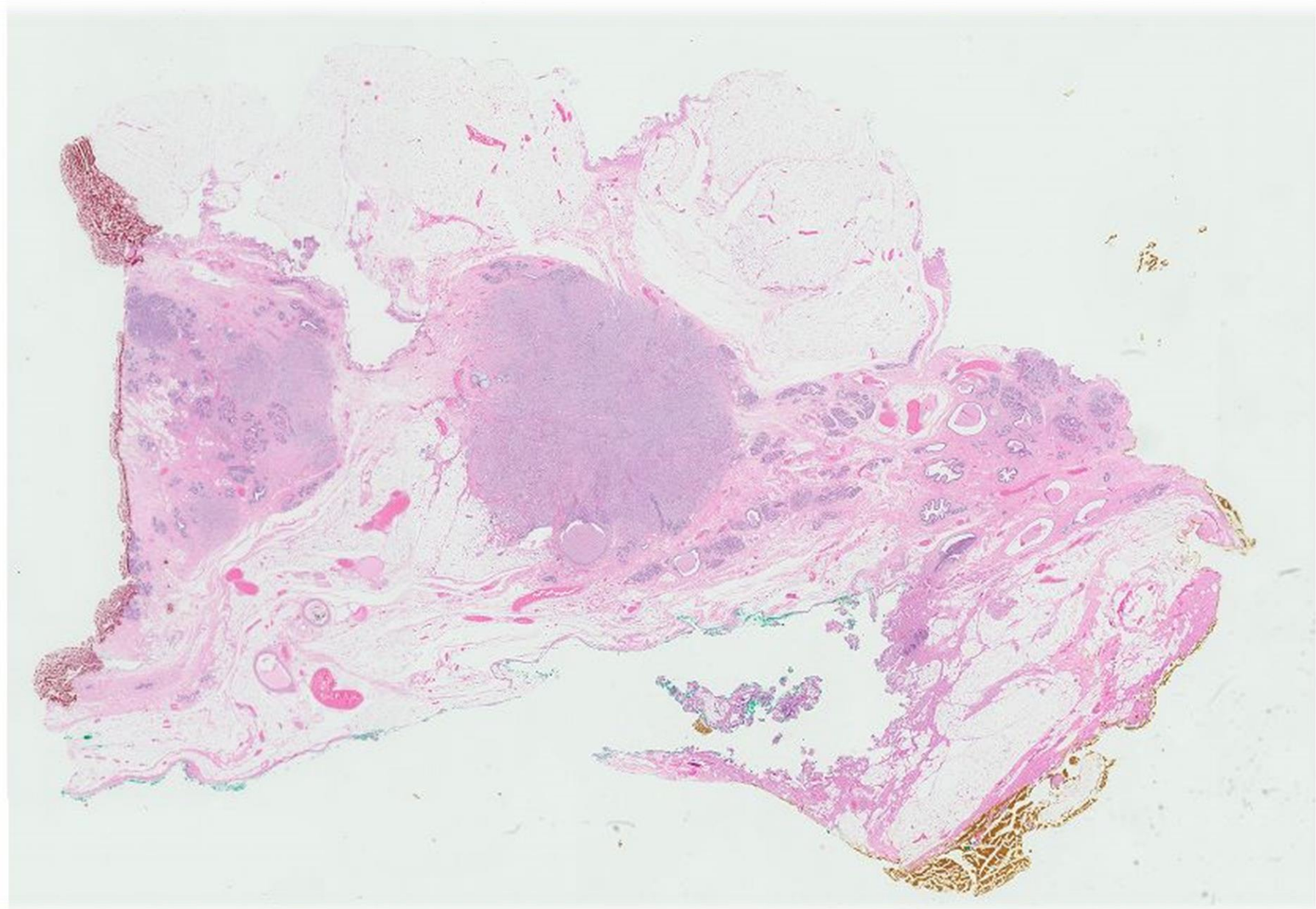


Case 16

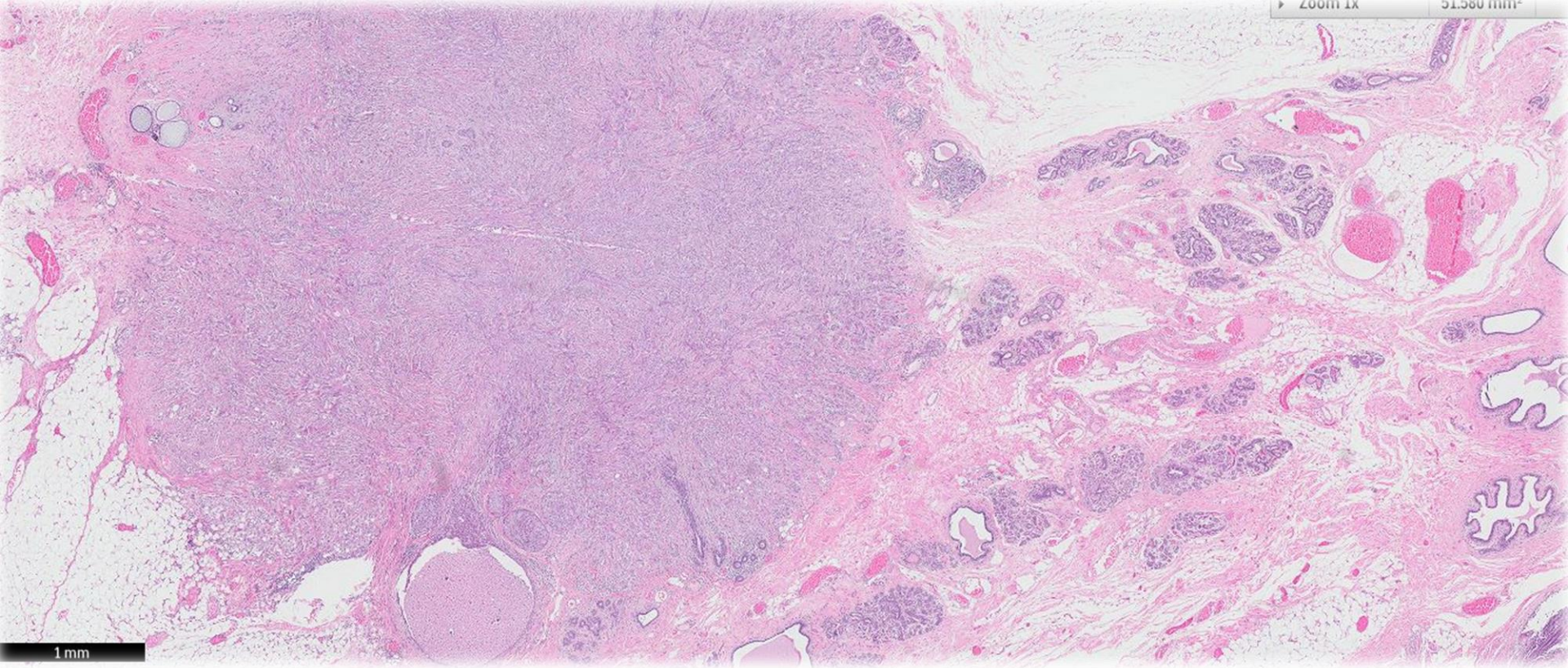
Sections (A, B) from a left mastectomy
of a 48 year old Chinese lady.





Zoom 1x

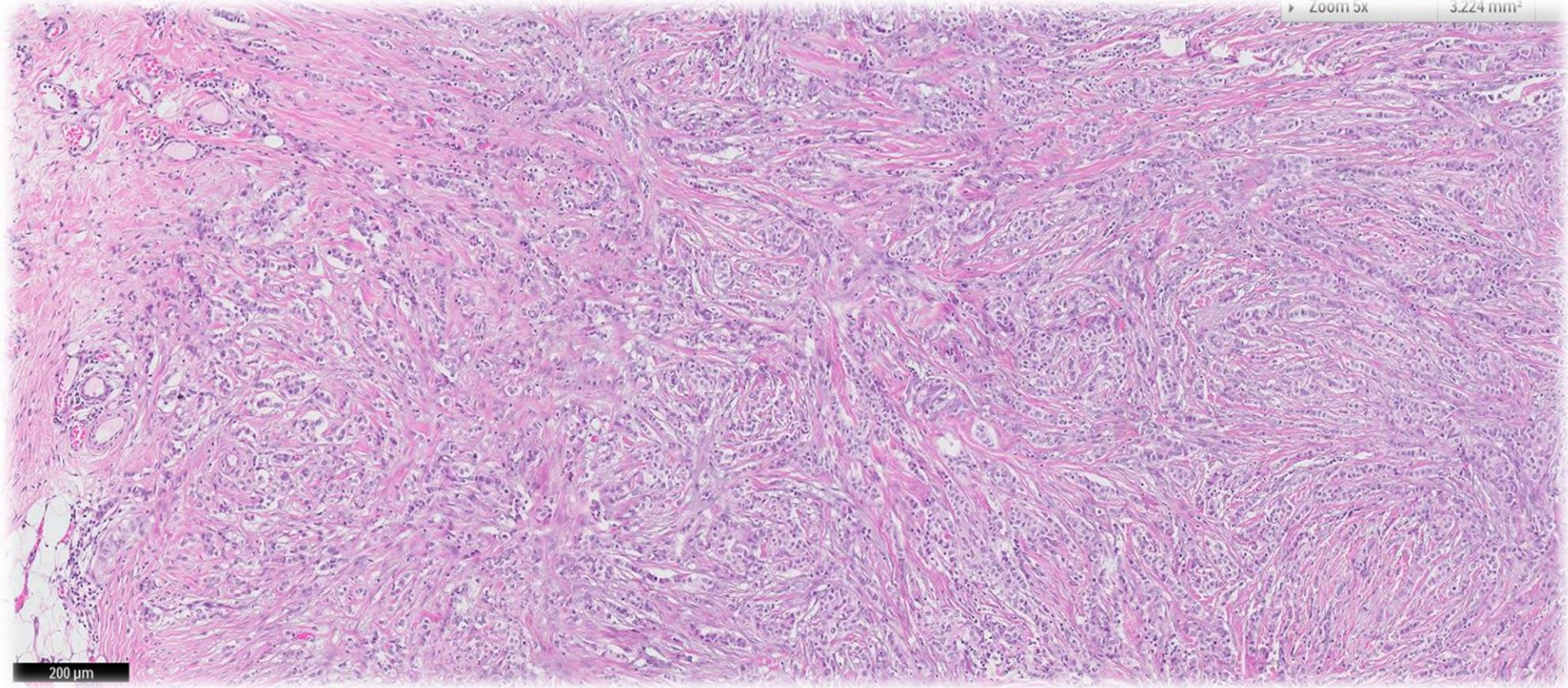
51.580 mm²



1 mm

▶ Zoom 5x

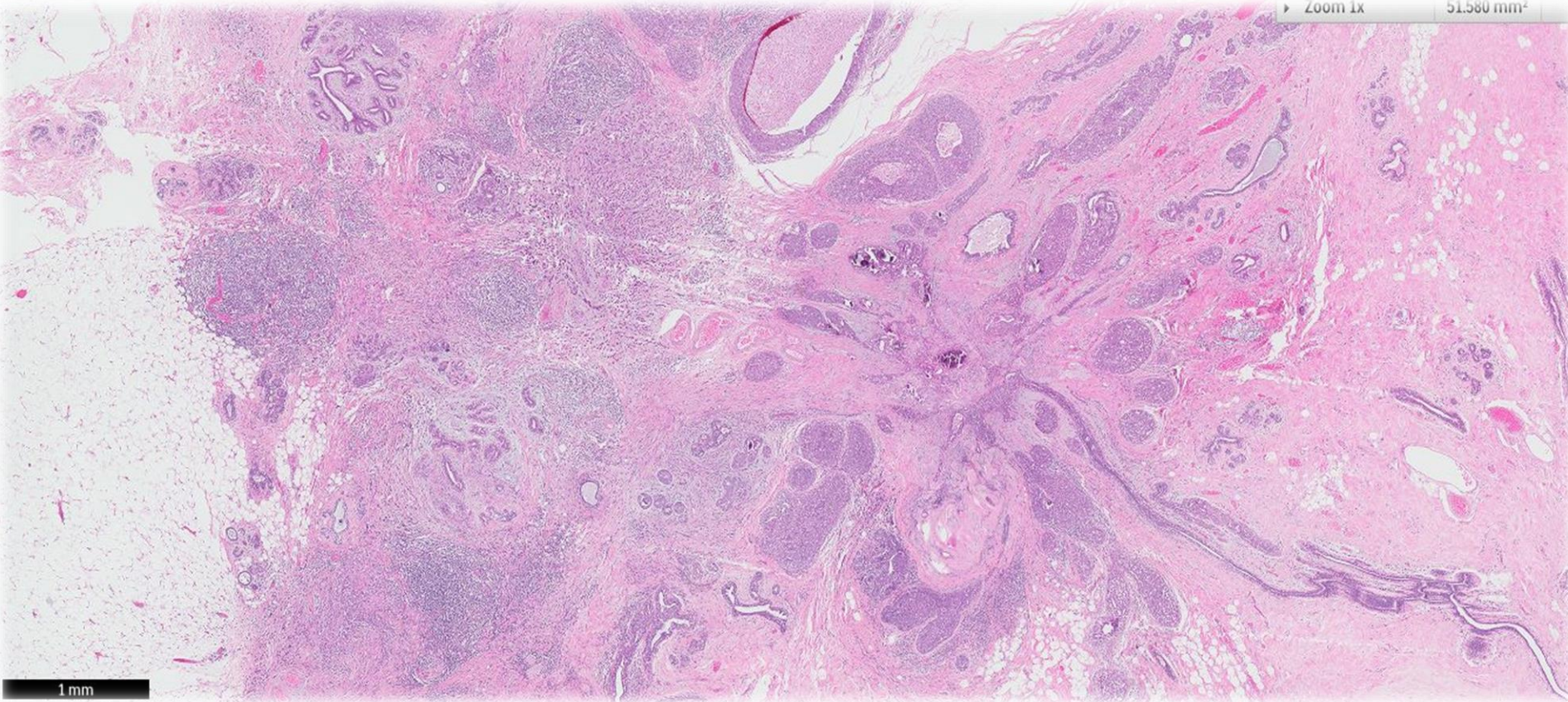
3.224 mm²



200 μm

Zoom 1x

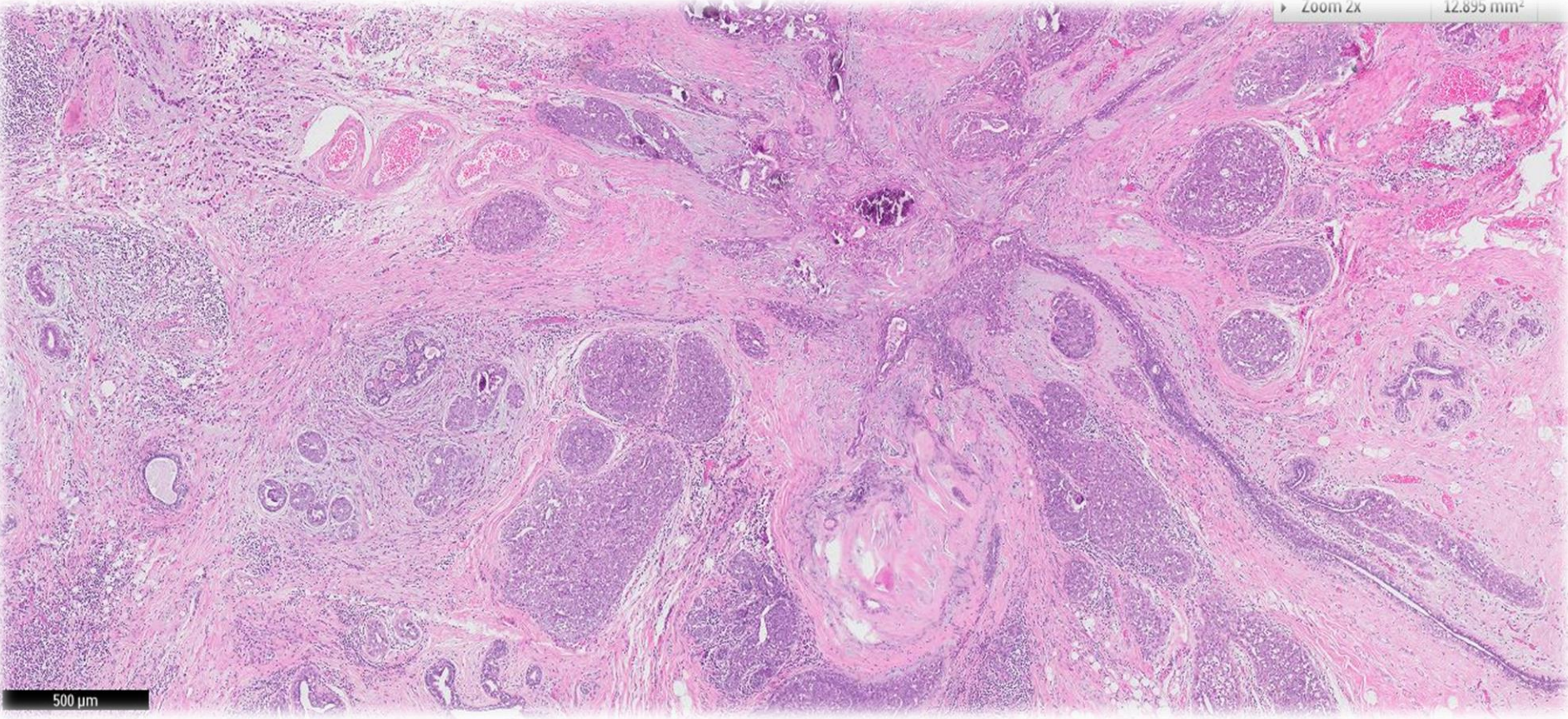
51.580 mm²



1 mm

Zoom 2x

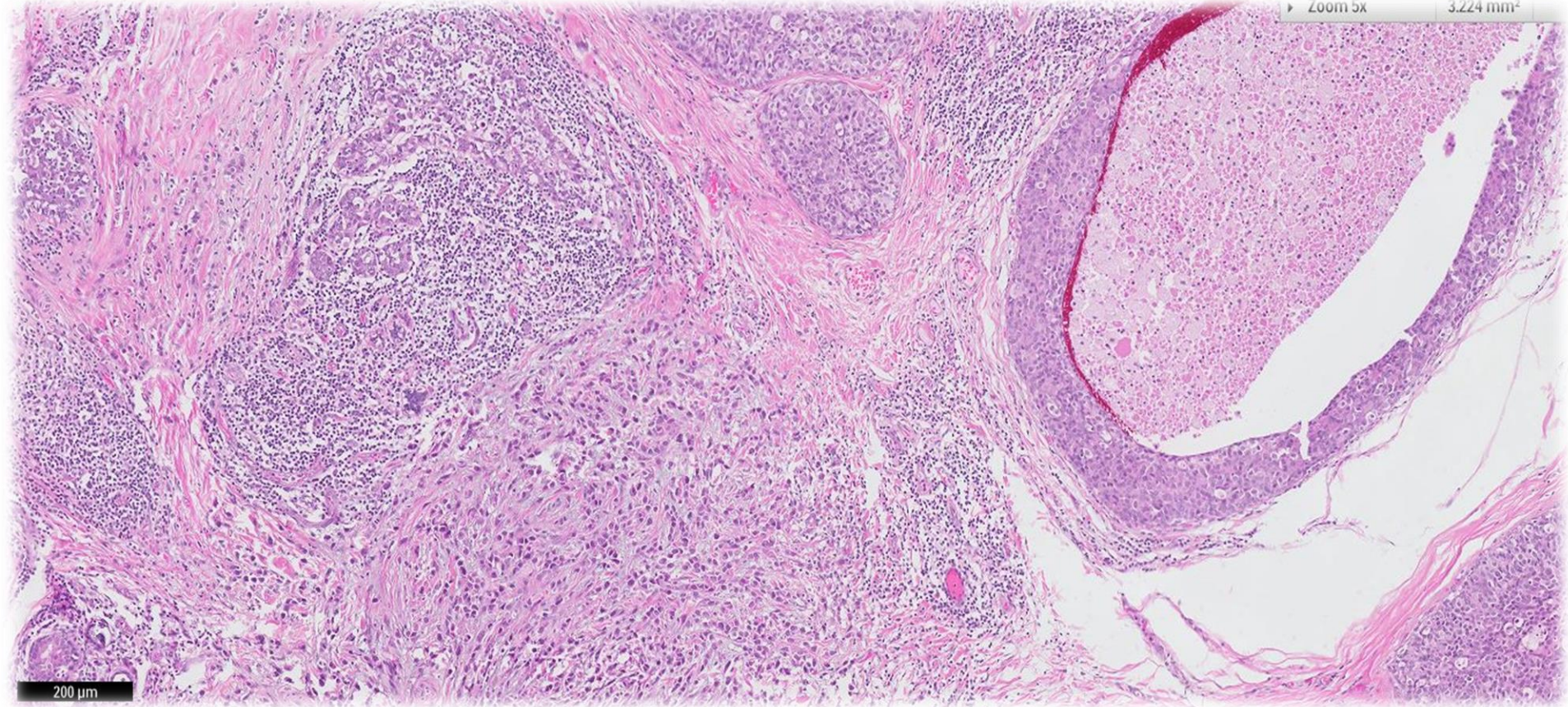
12.895 mm²



500 μm

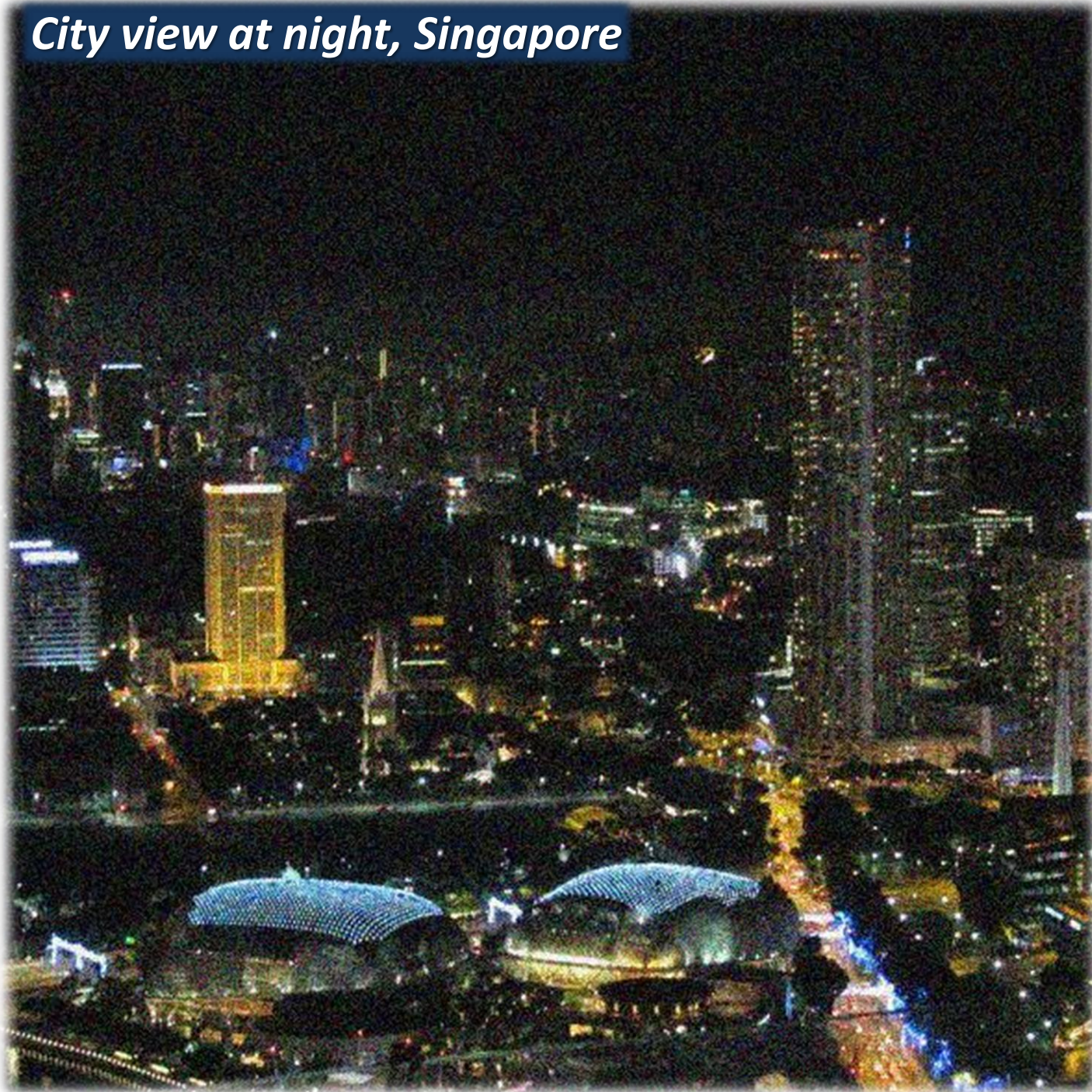
Zoom 5x

3.224 mm²

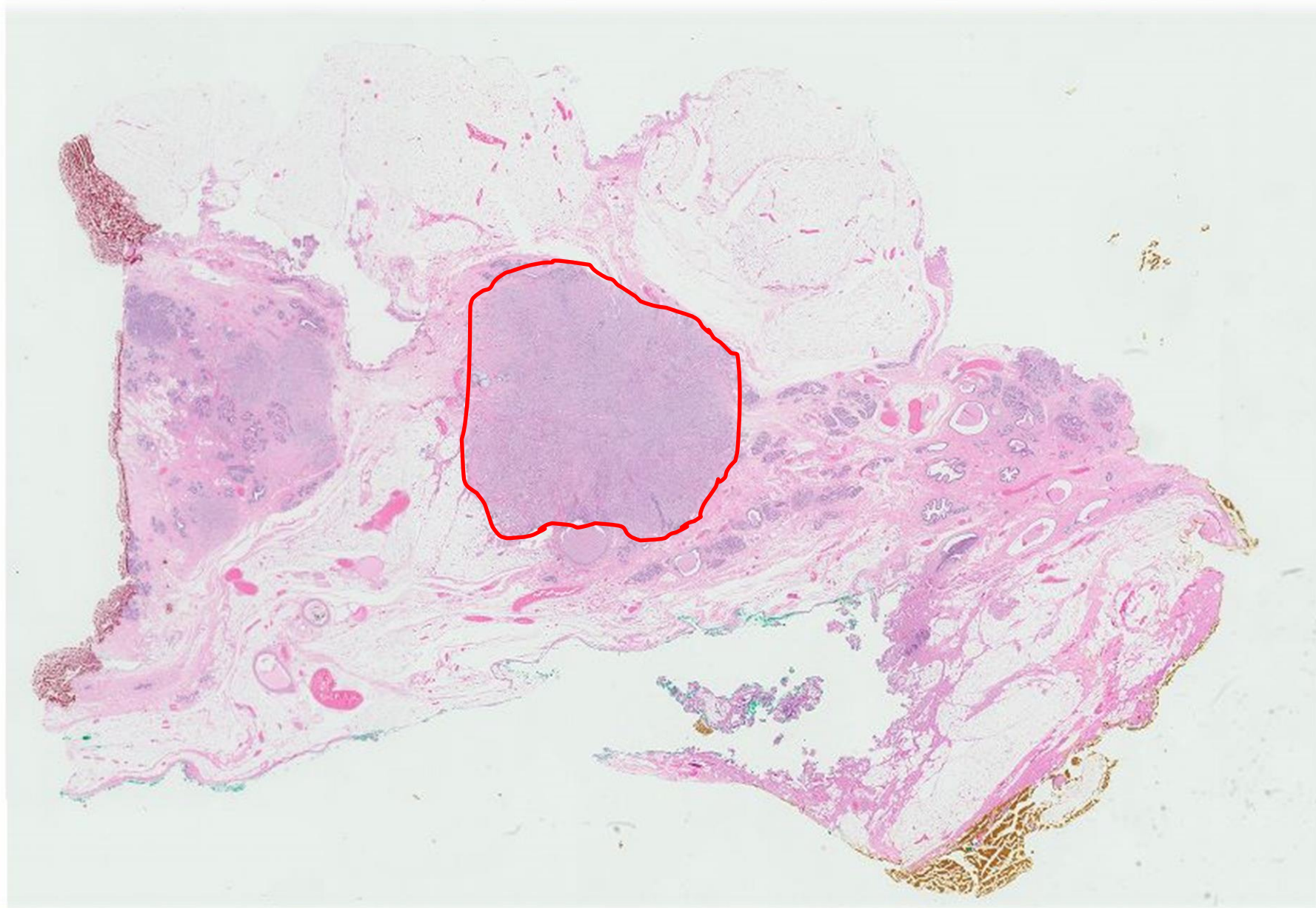


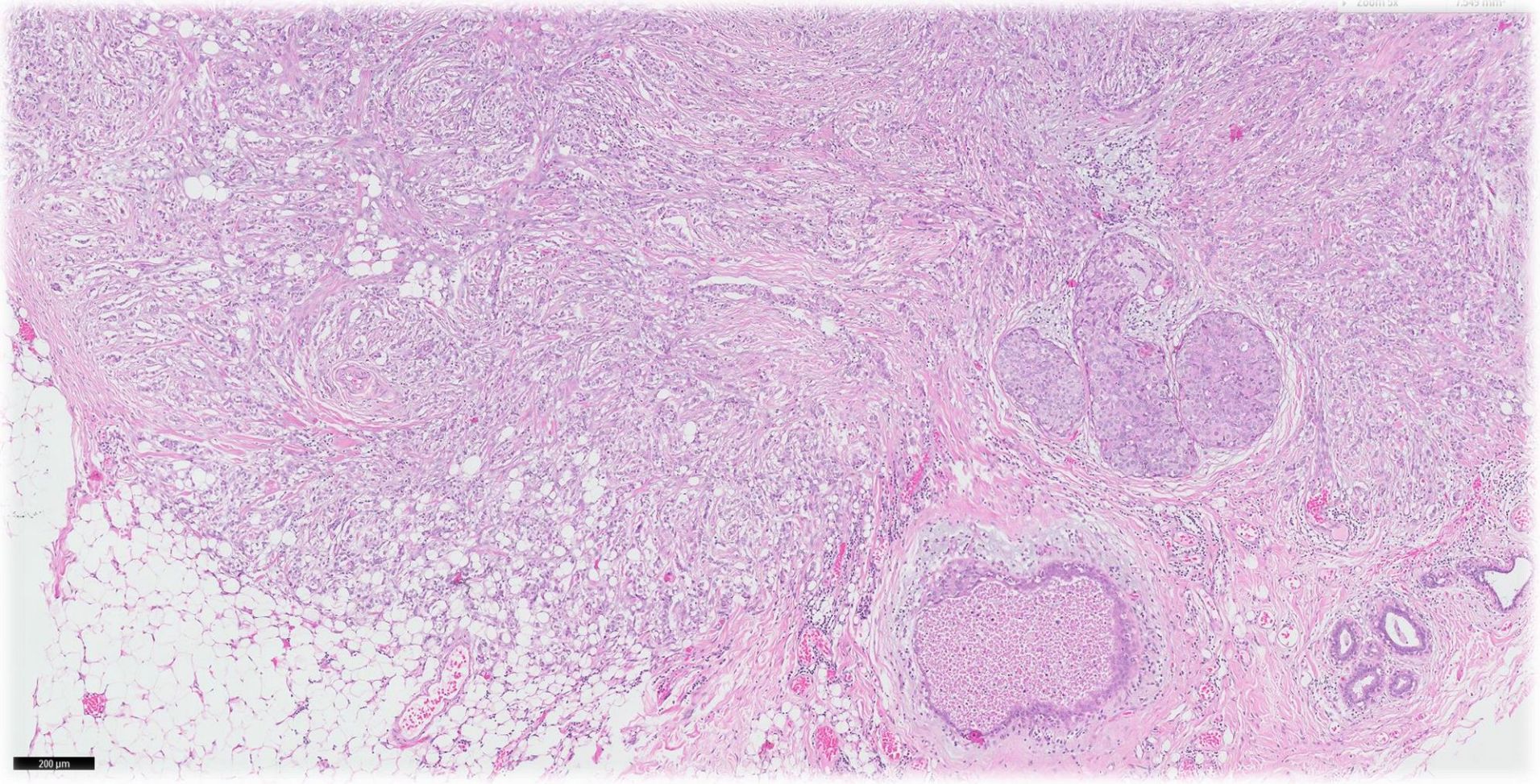
200 μ m

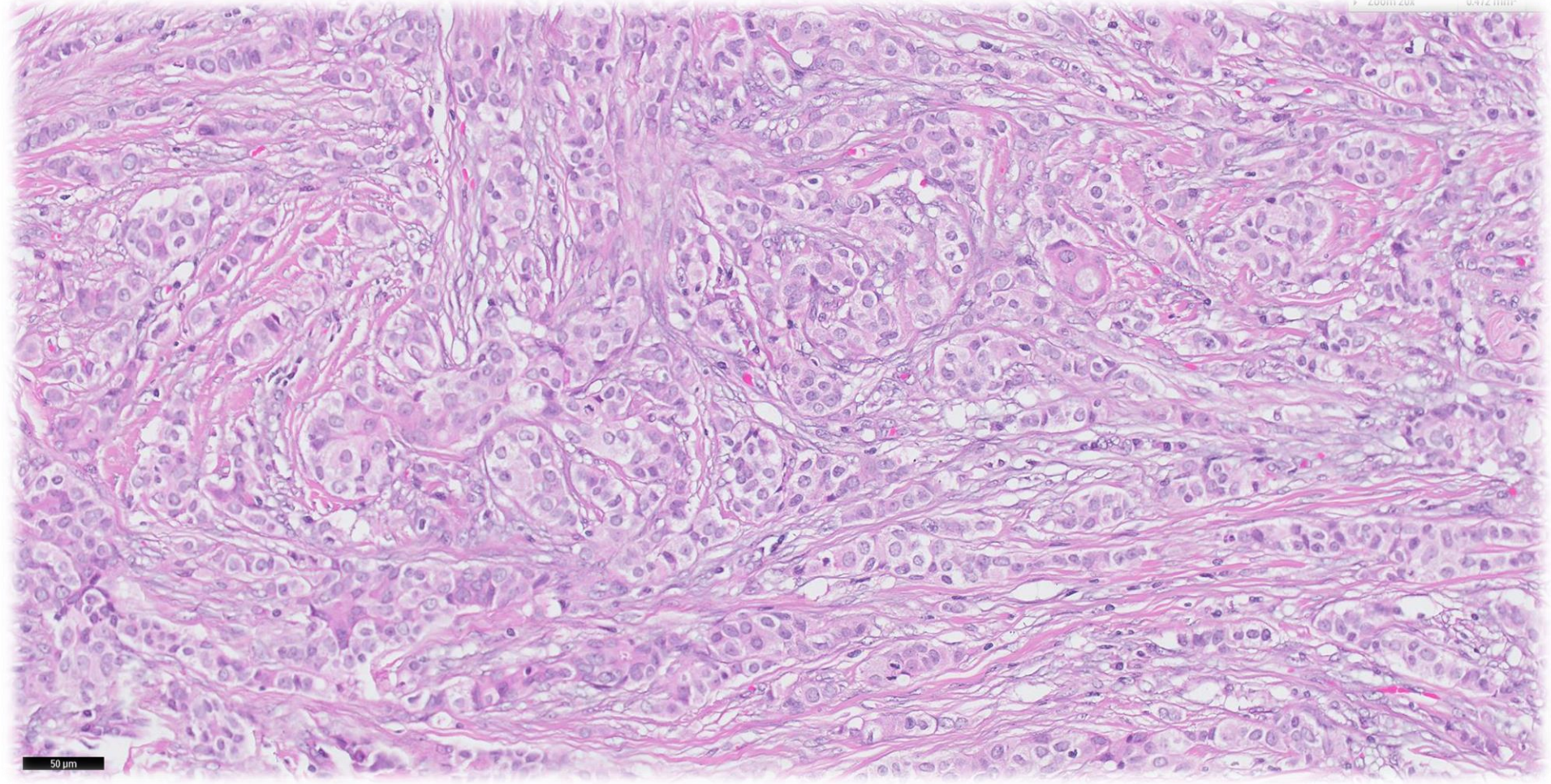
City view at night, Singapore



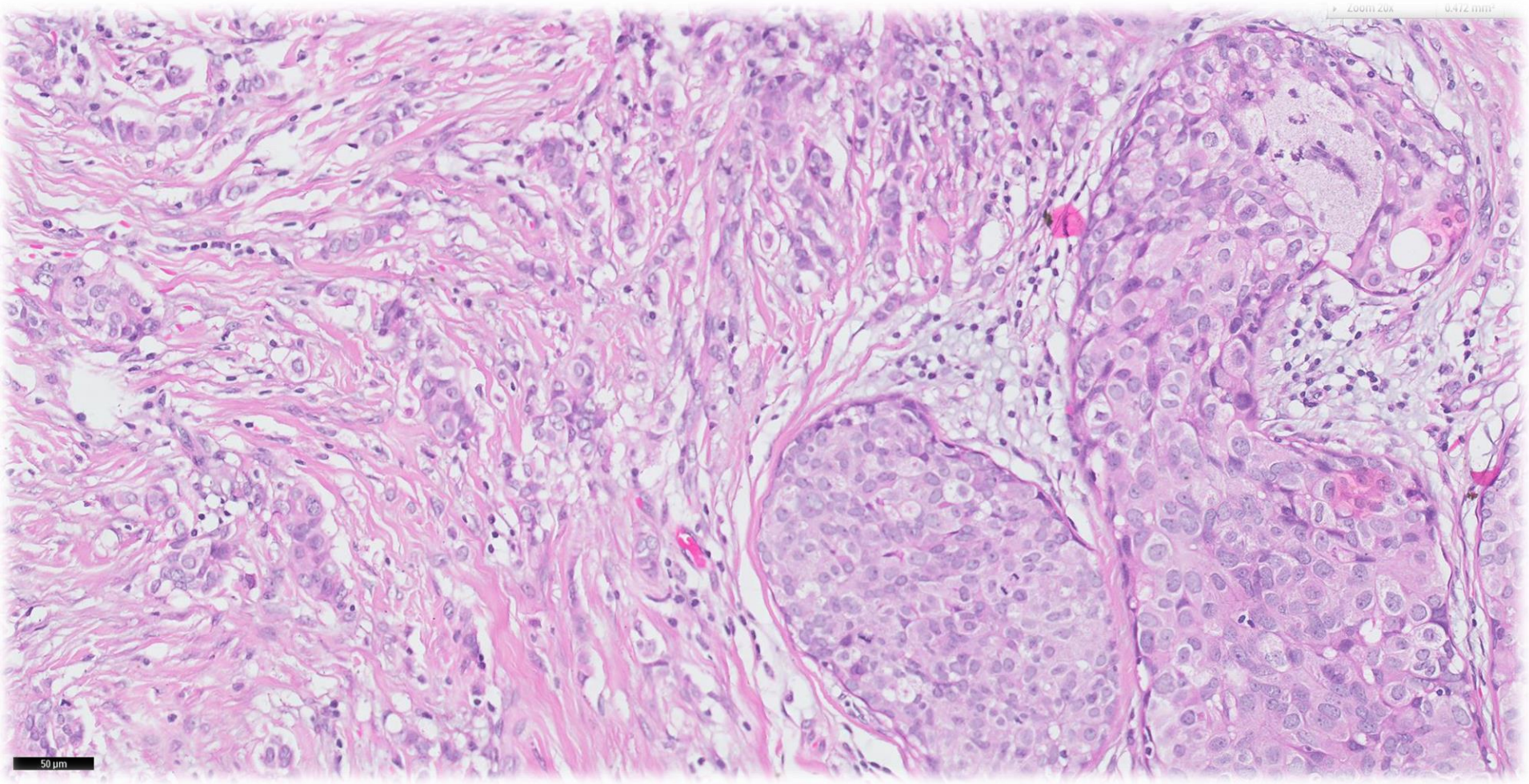






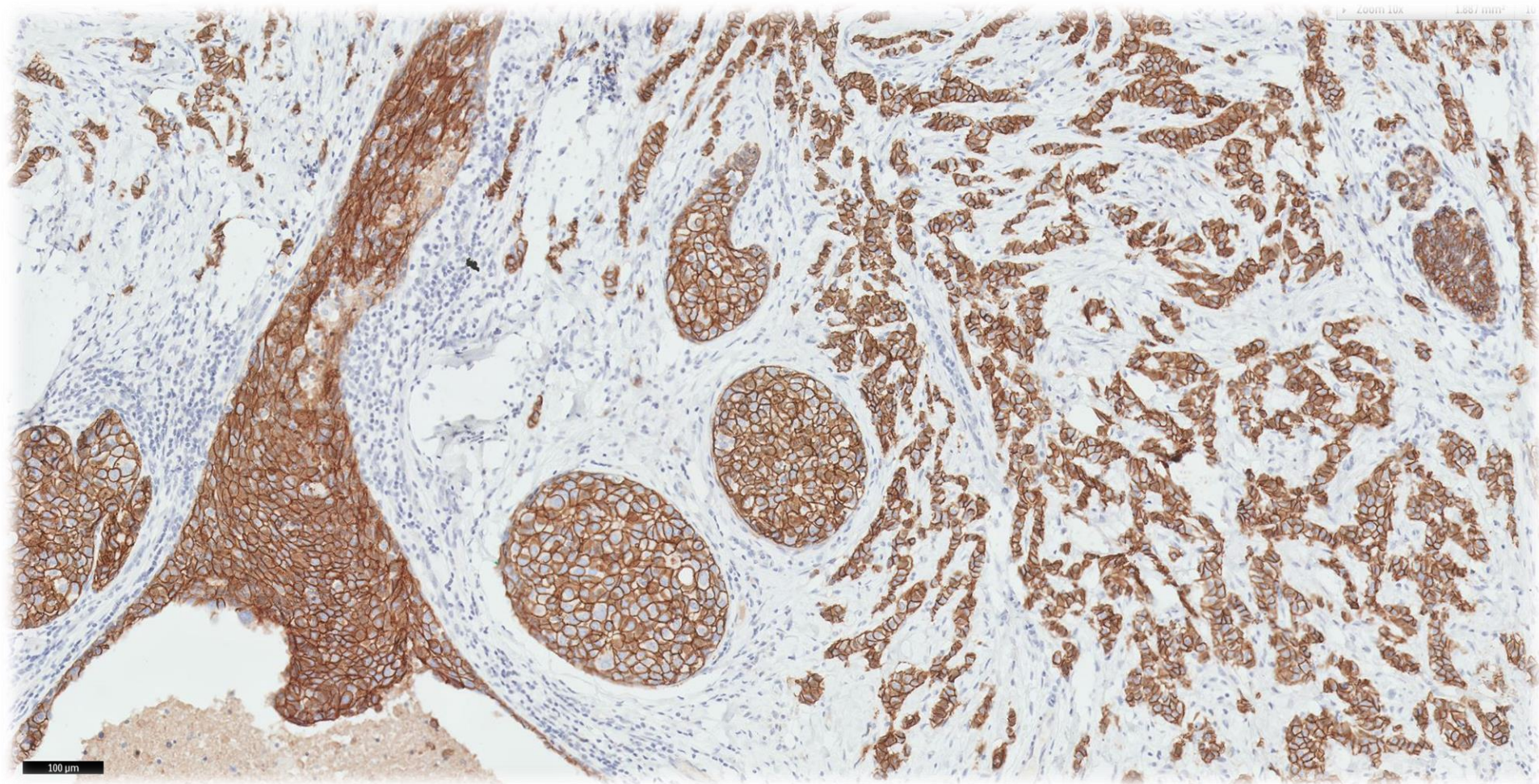


50 μ m

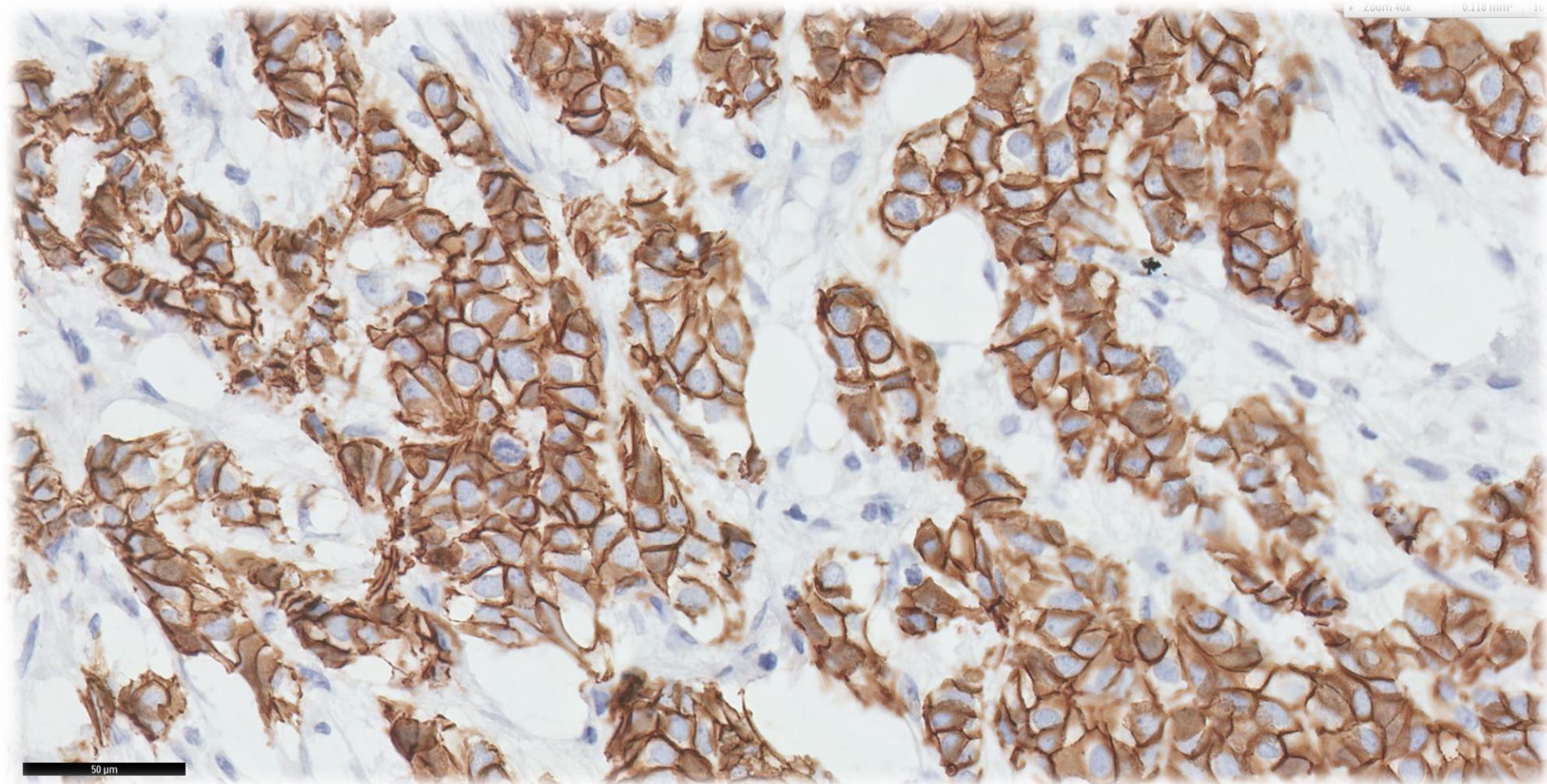


50 μm

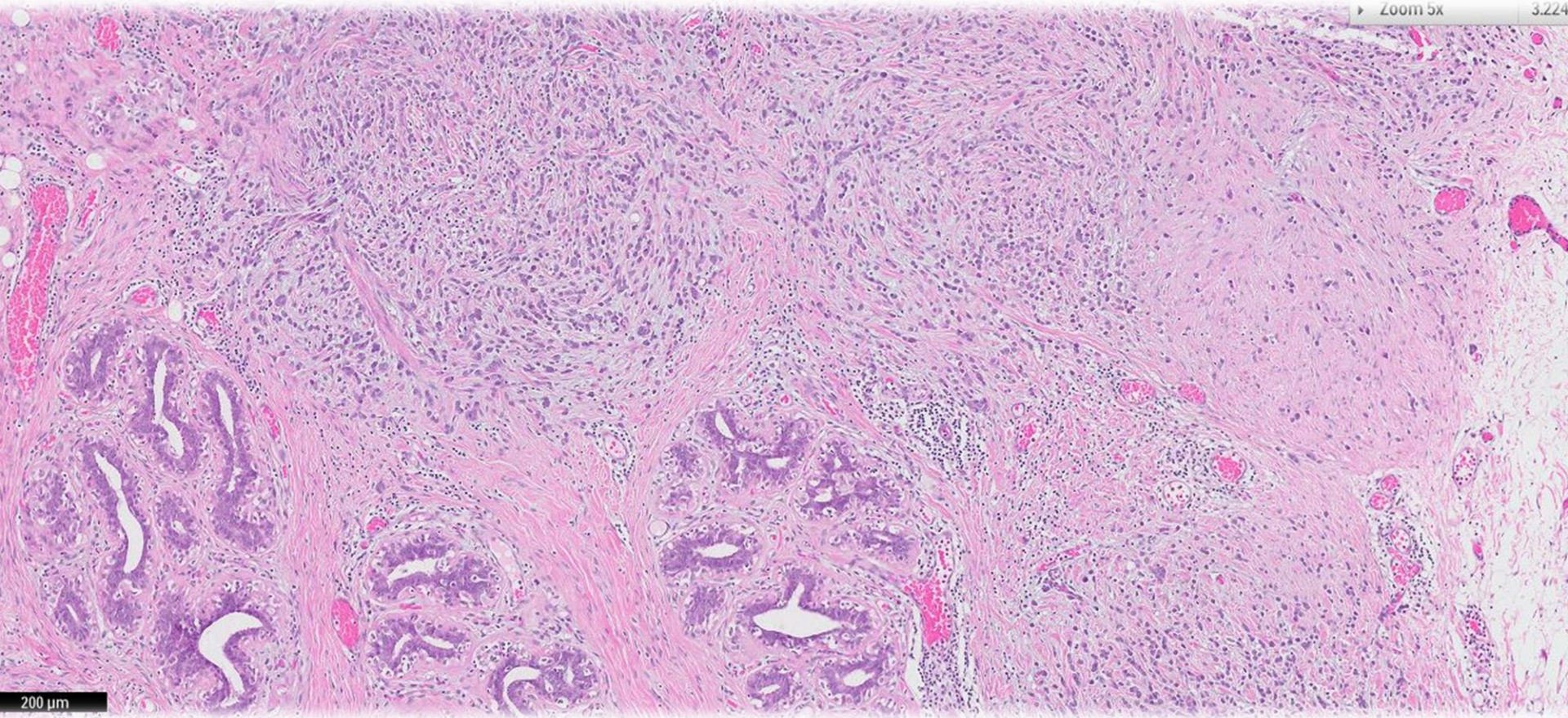
E-cadherin



E-cadherin

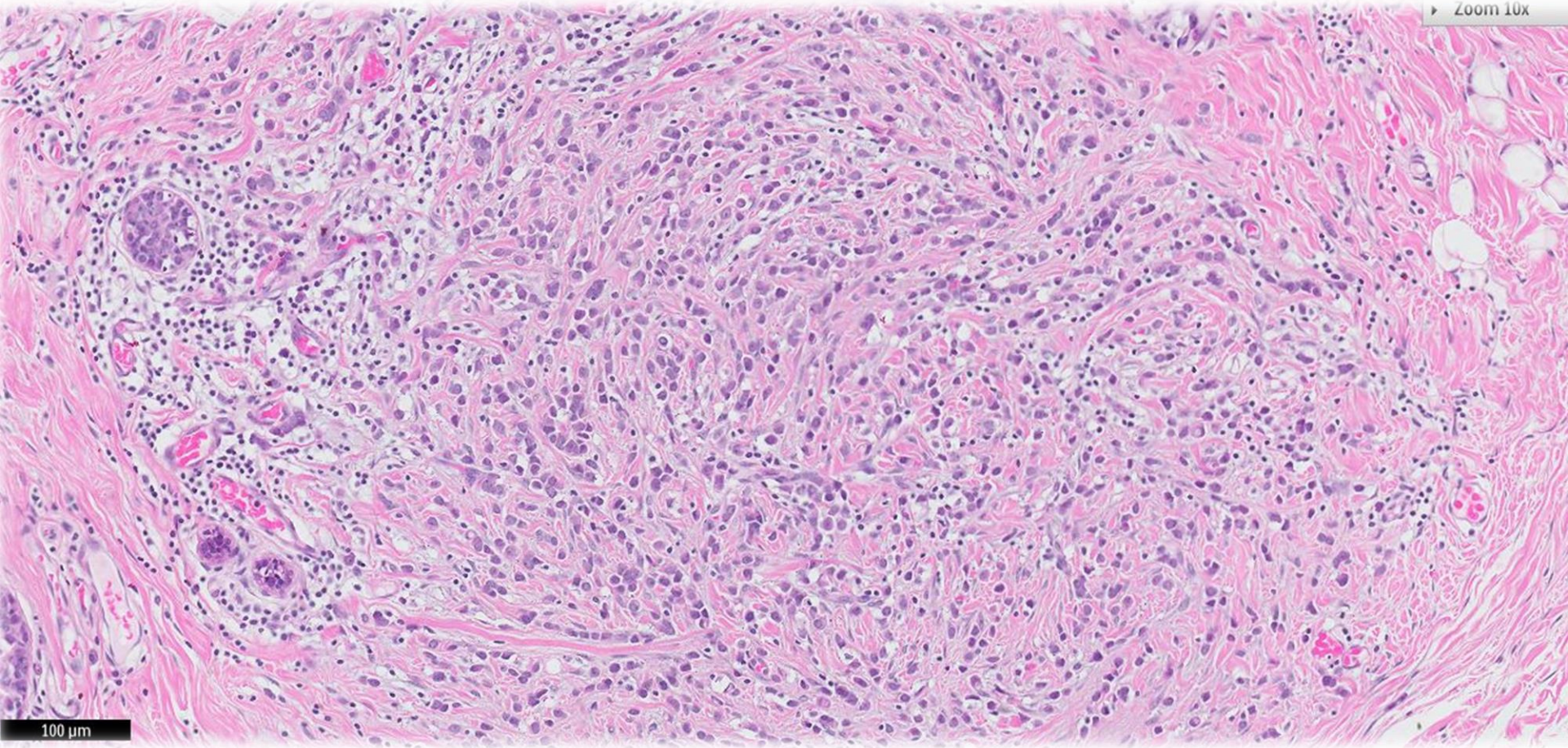






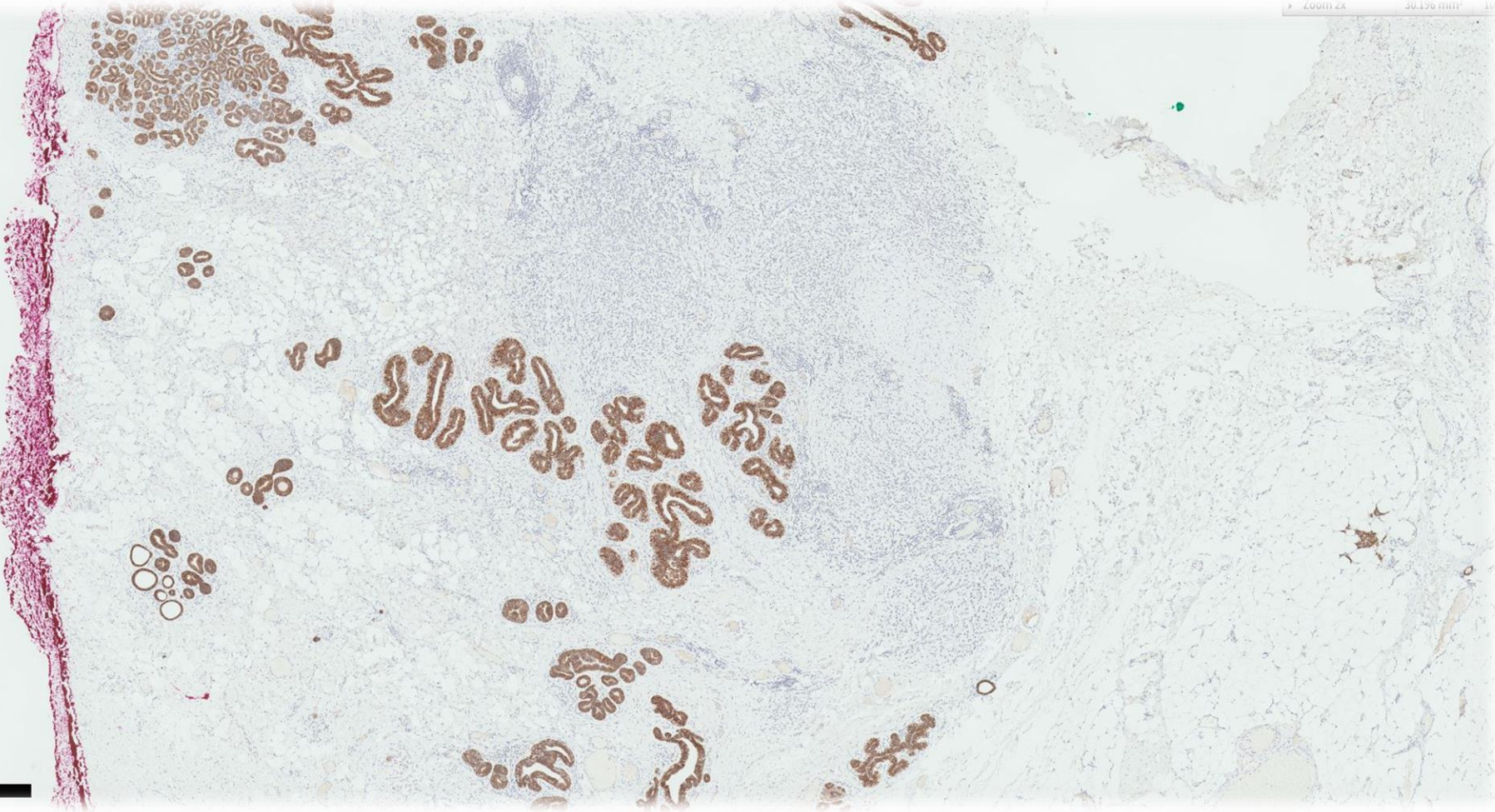
200 μm

Zoom 10x

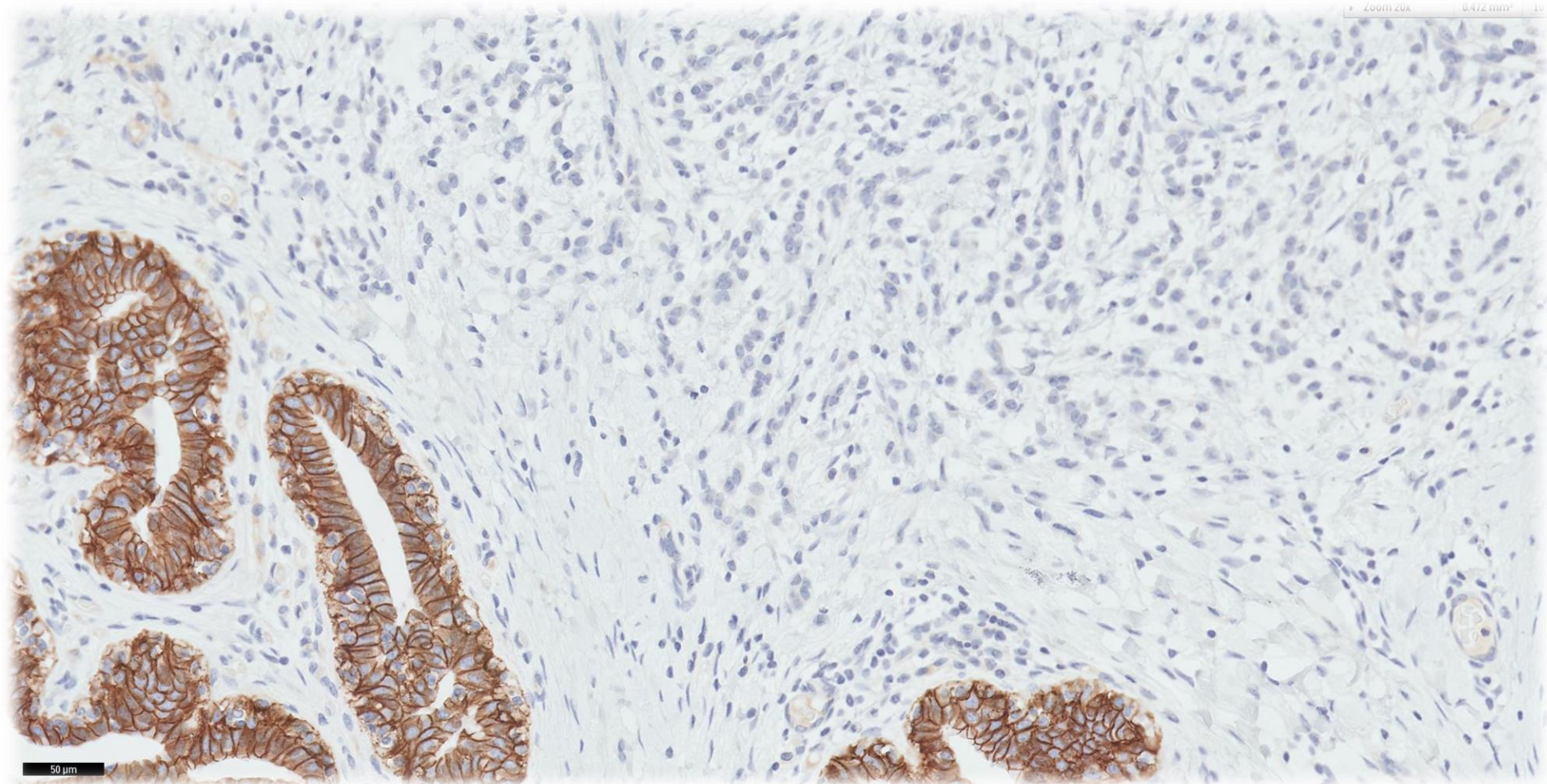


100 μ m

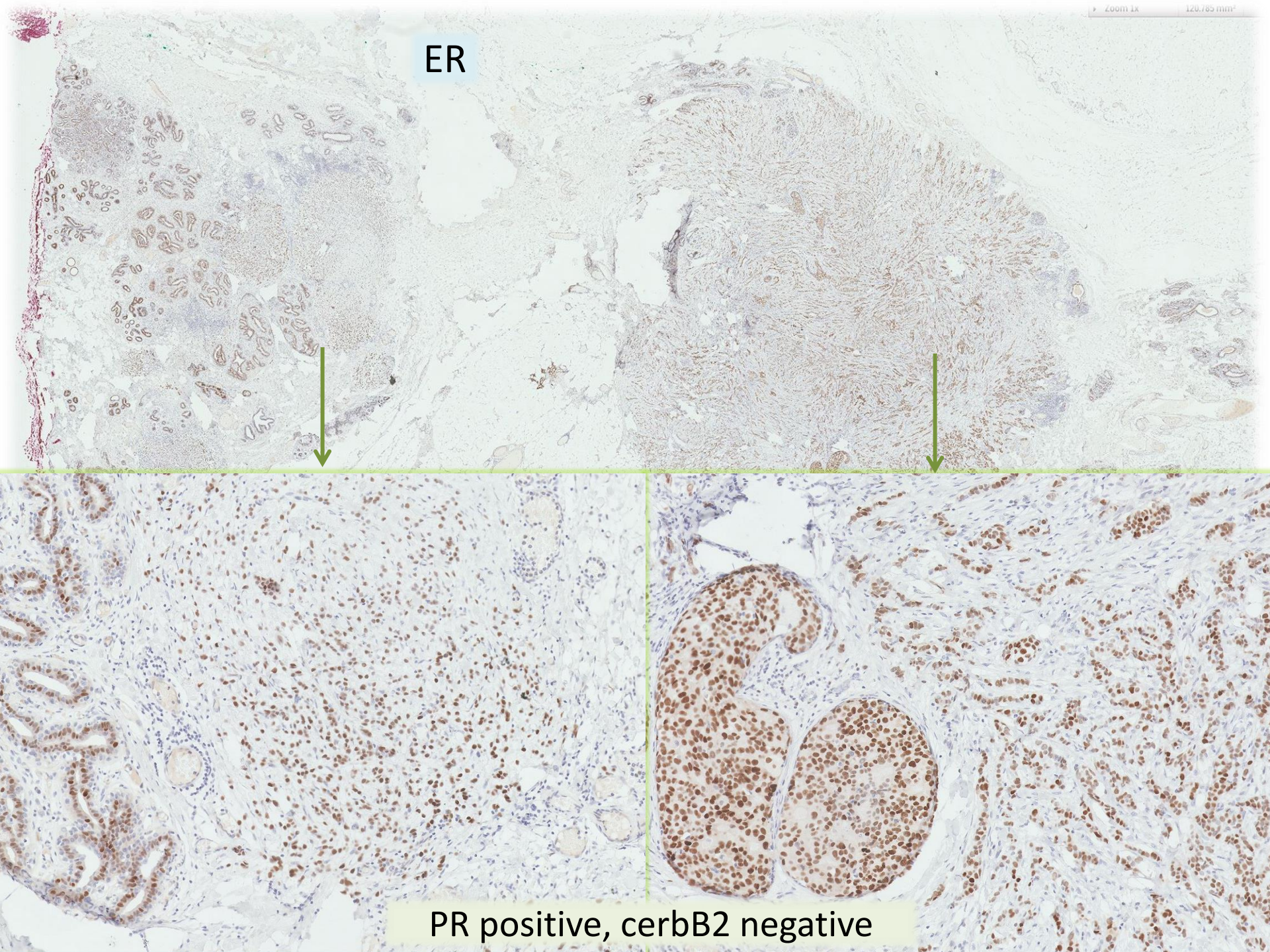
E-cadherin



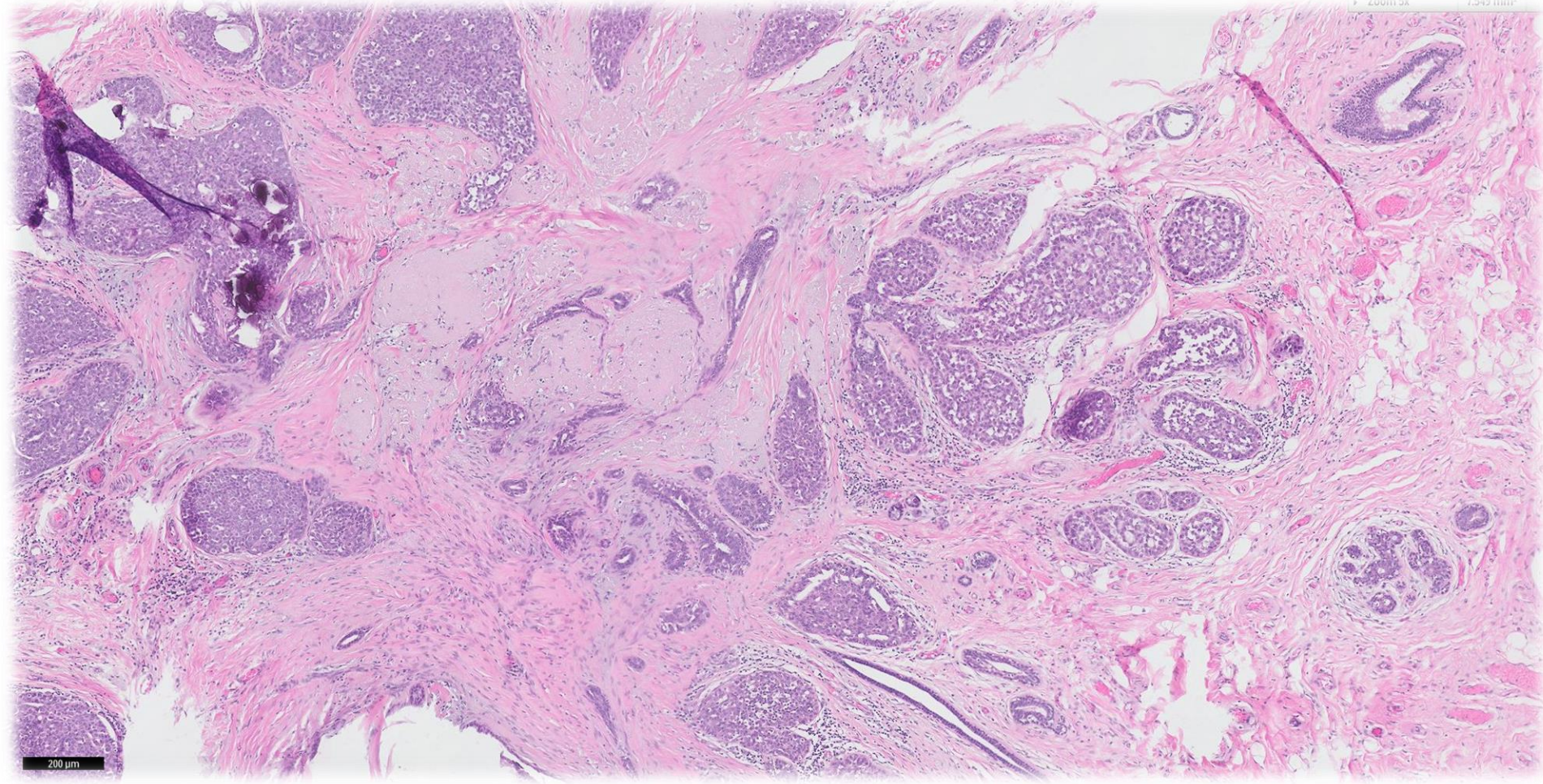
E-cadherin



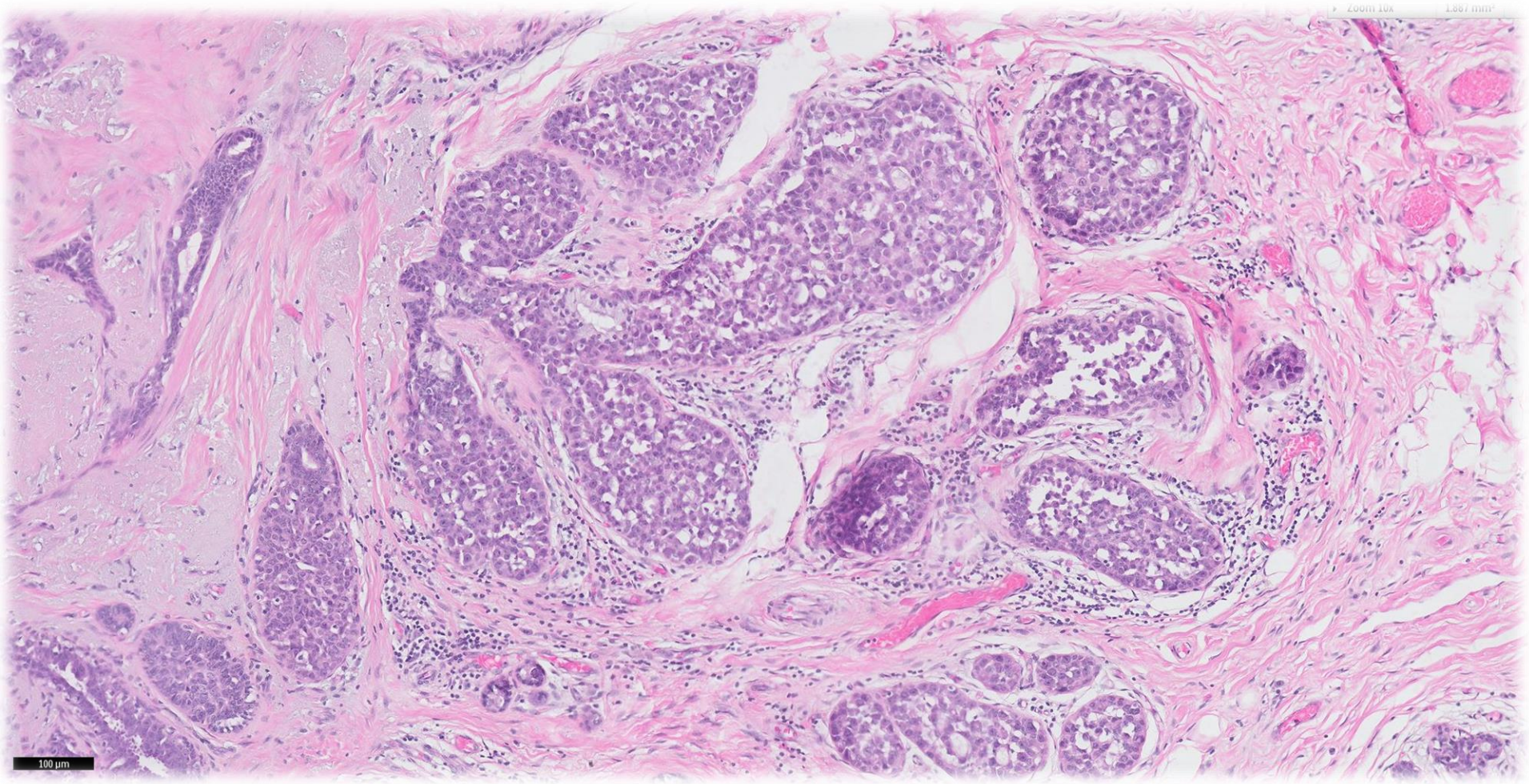
ER

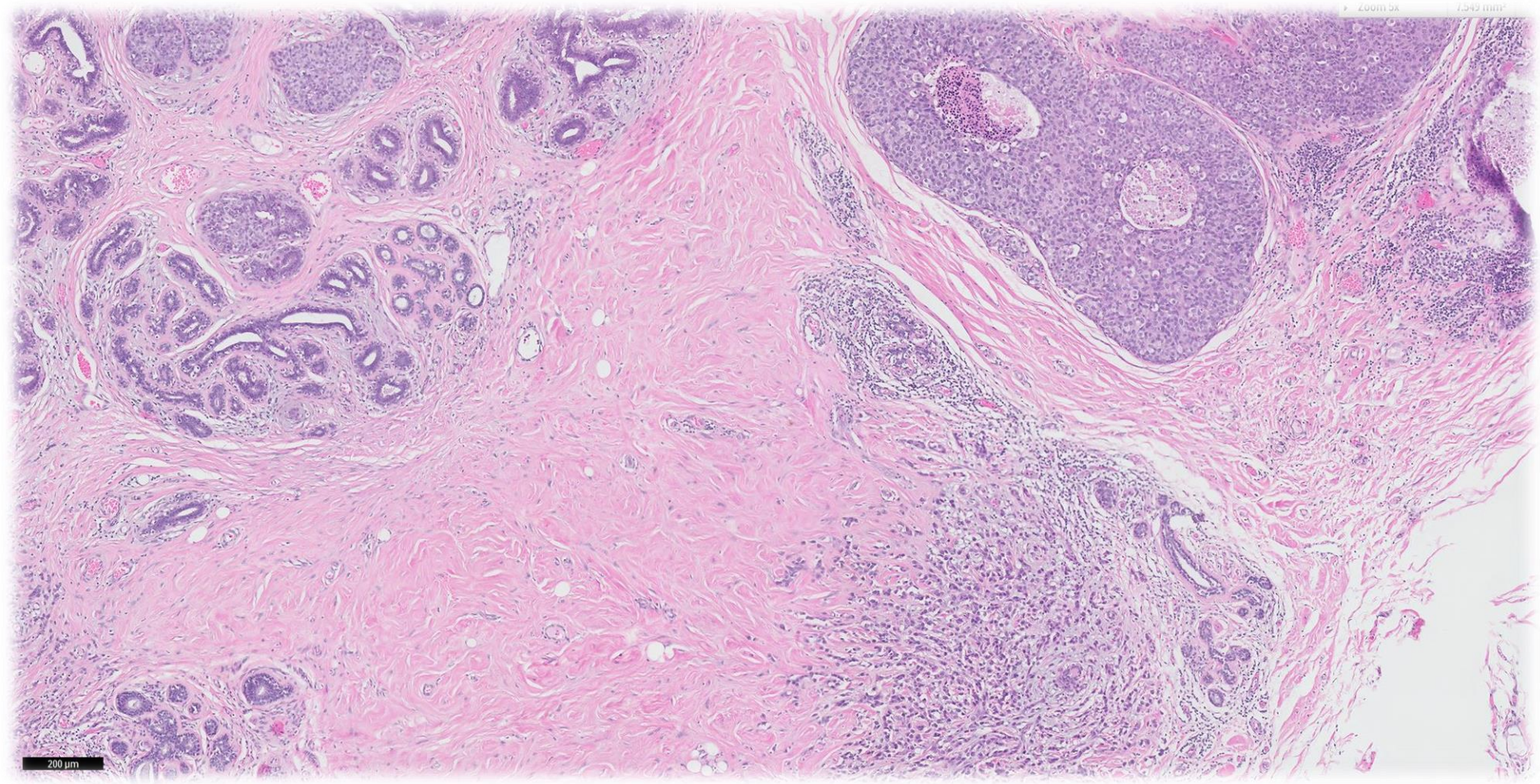


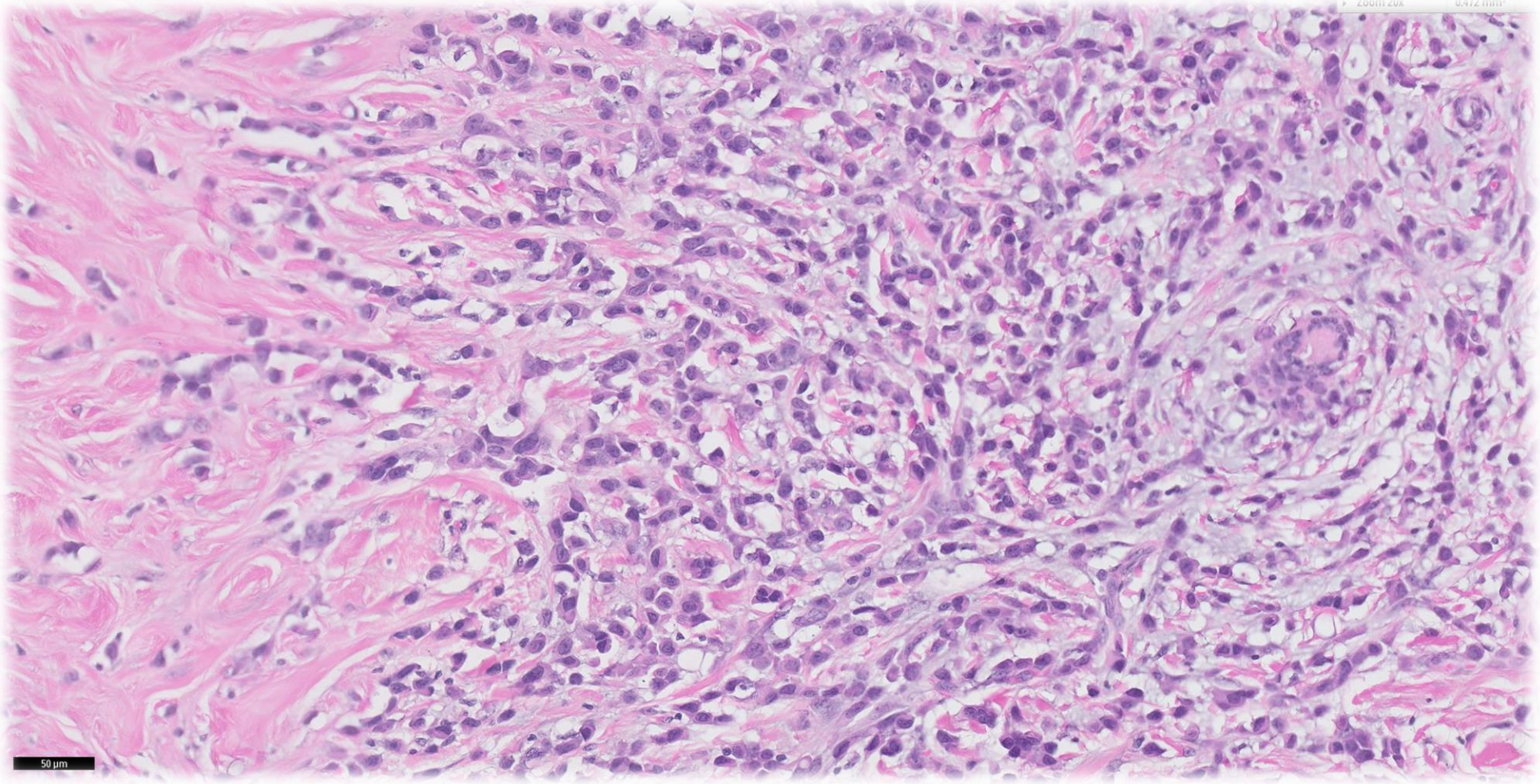
PR positive, cerbB2 negative



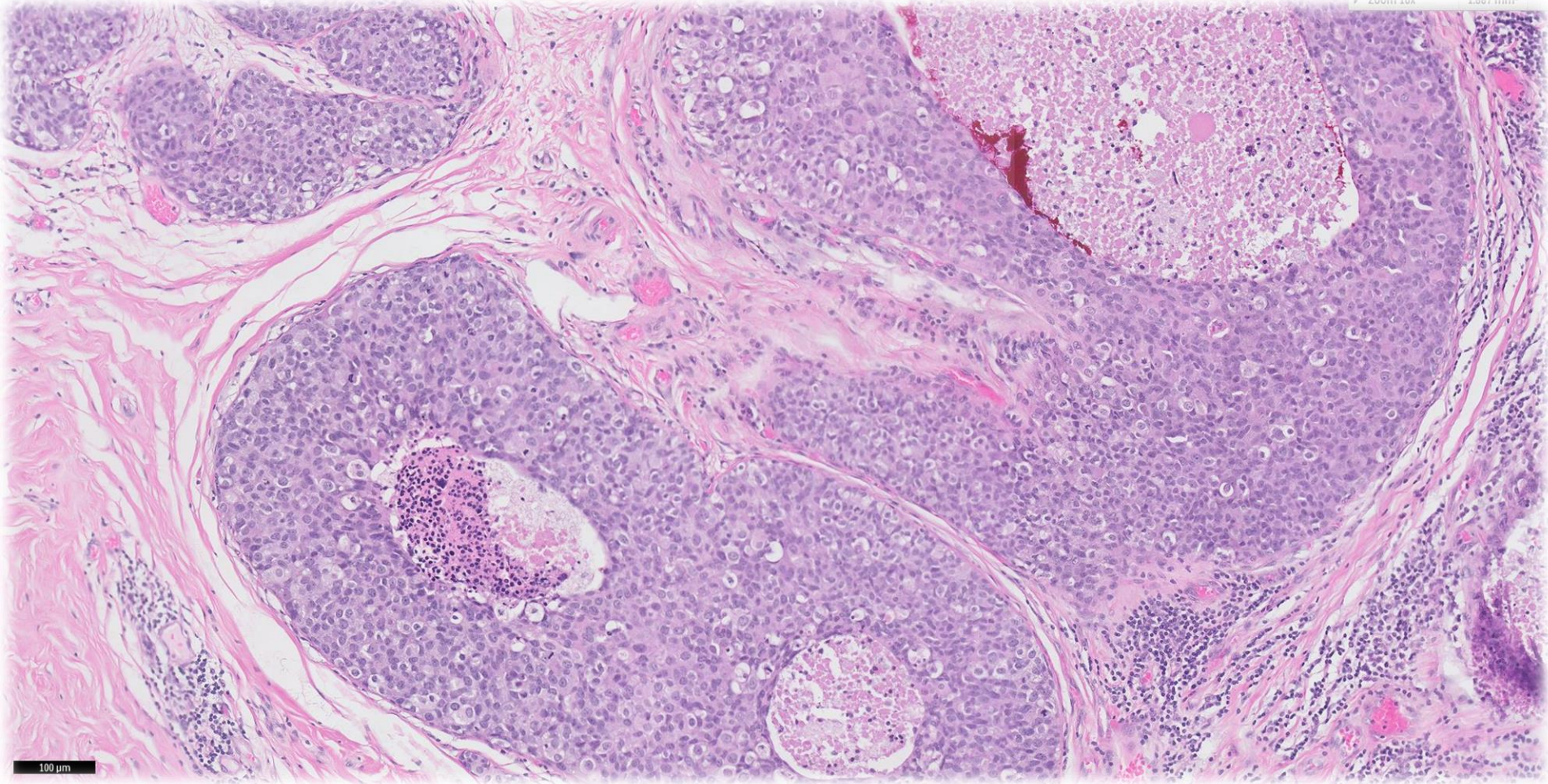
200 μ m



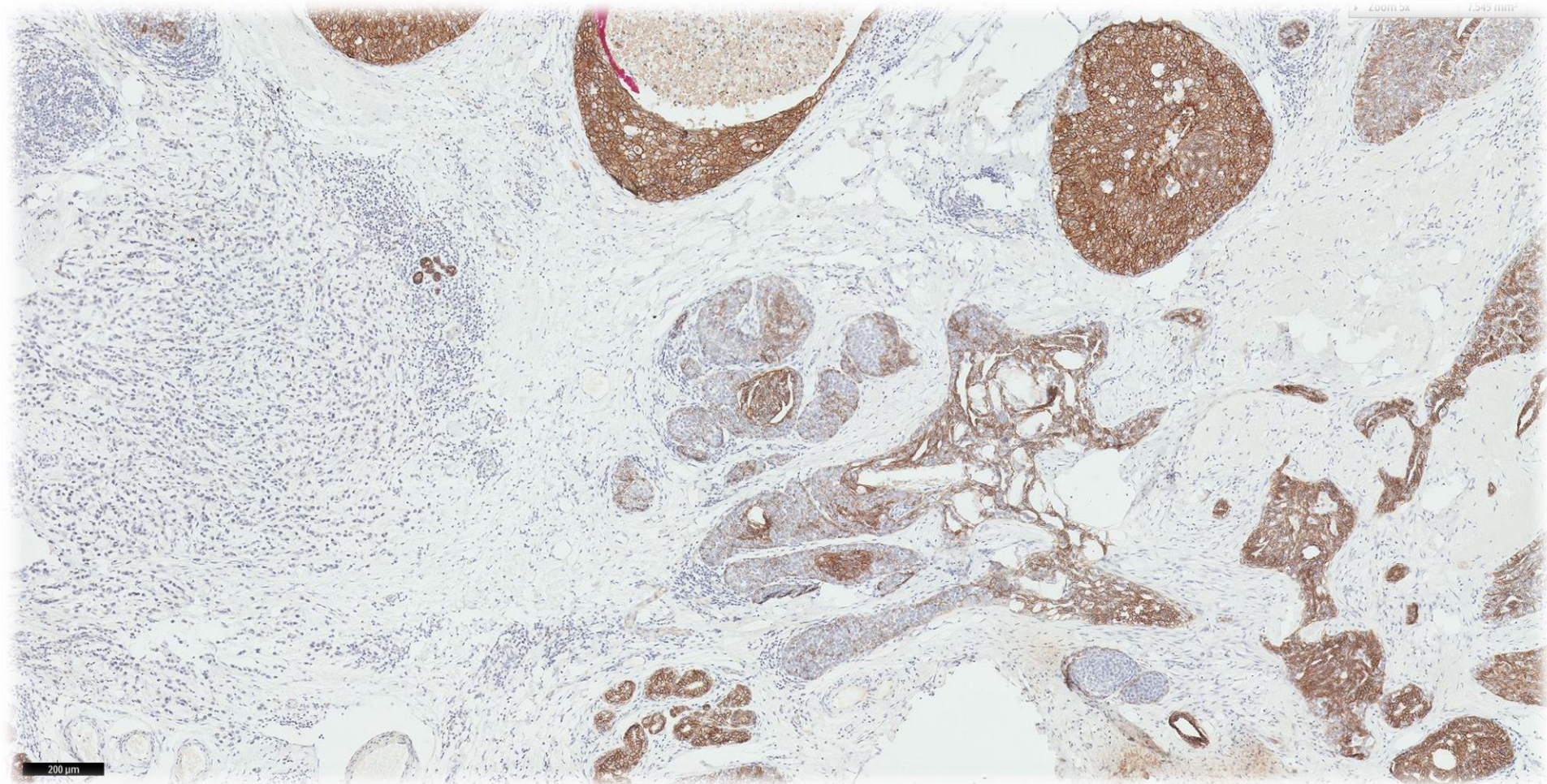




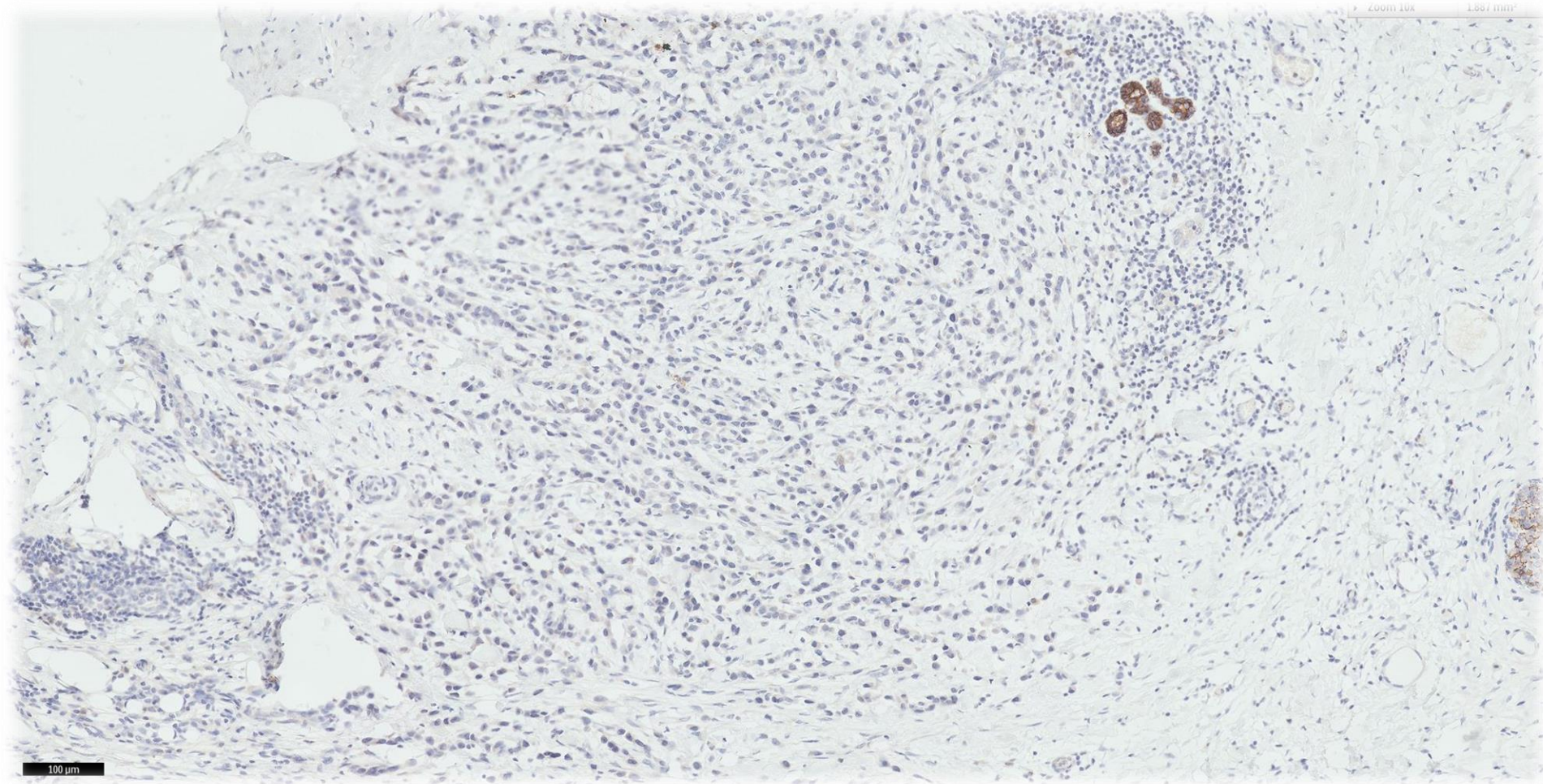
50 µm



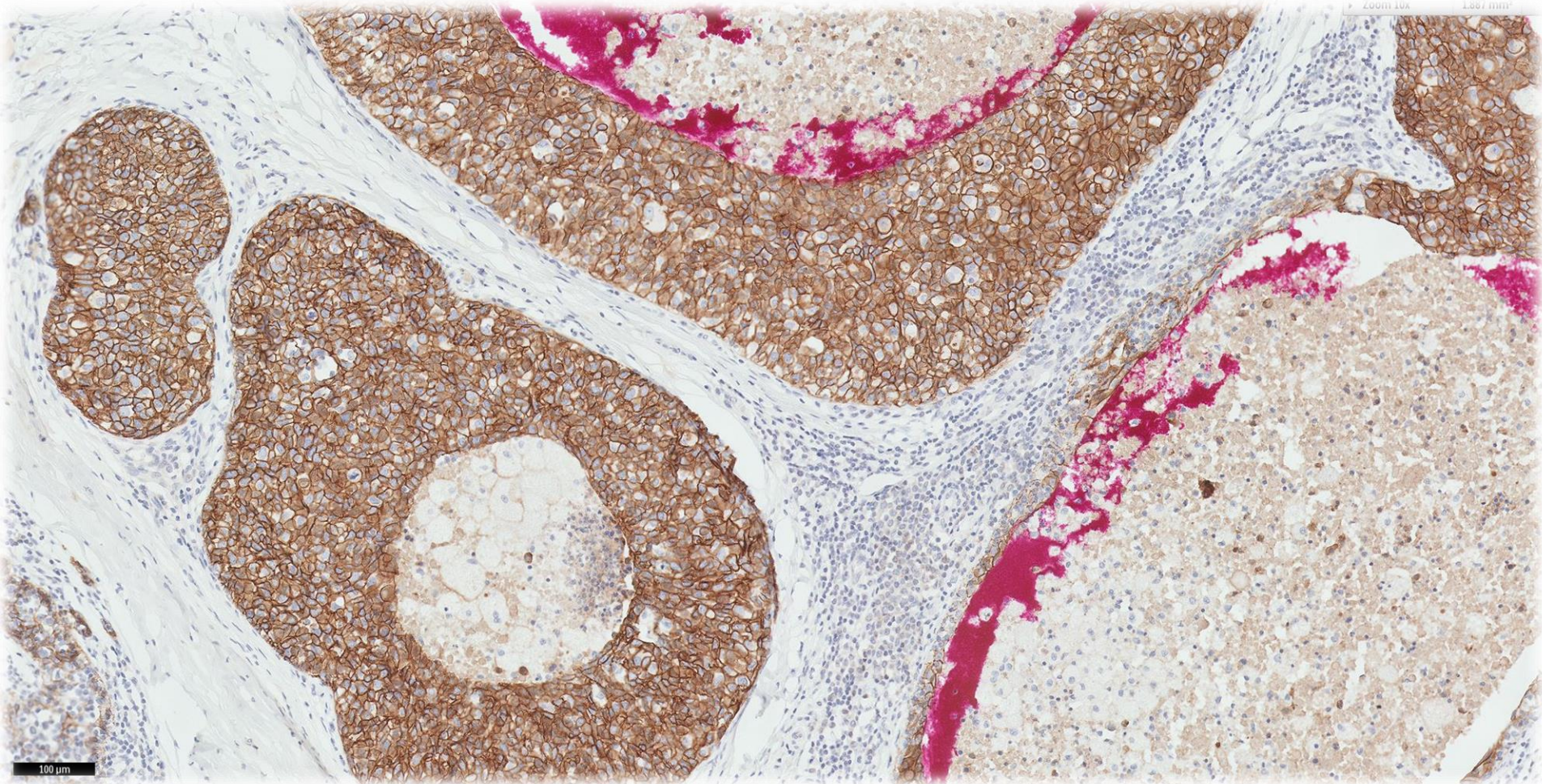
E-cadherin



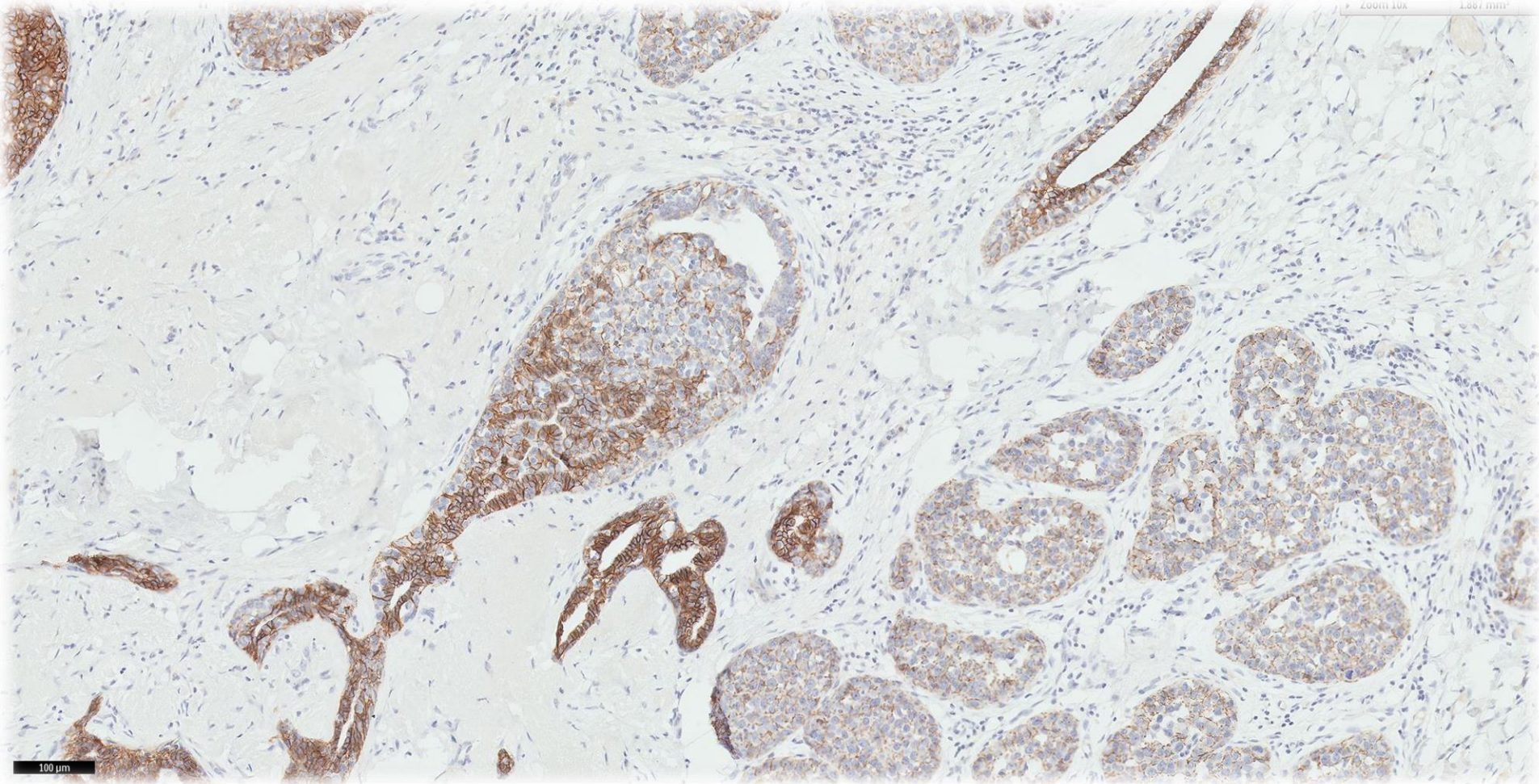
E-cadherin



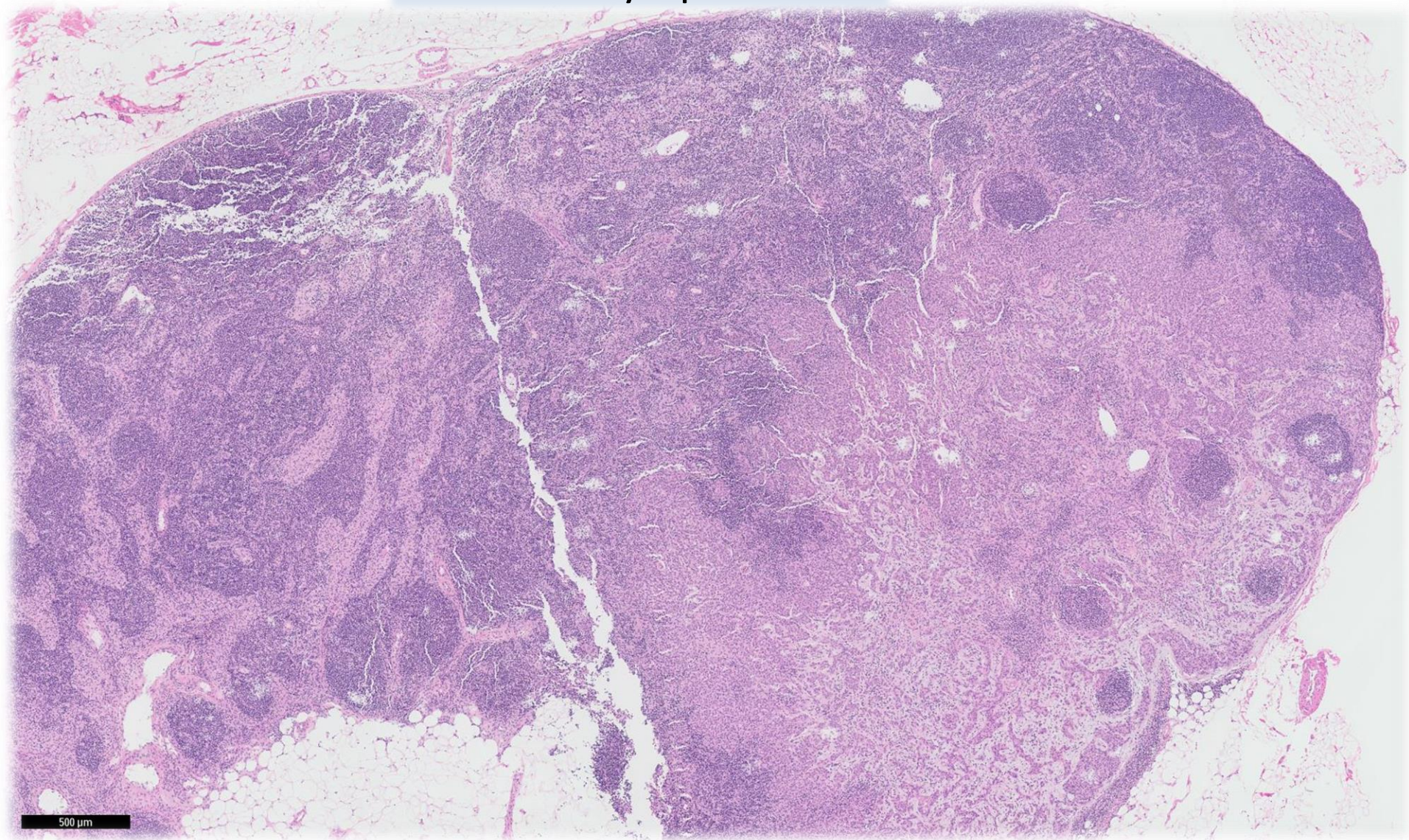
E-cadherin



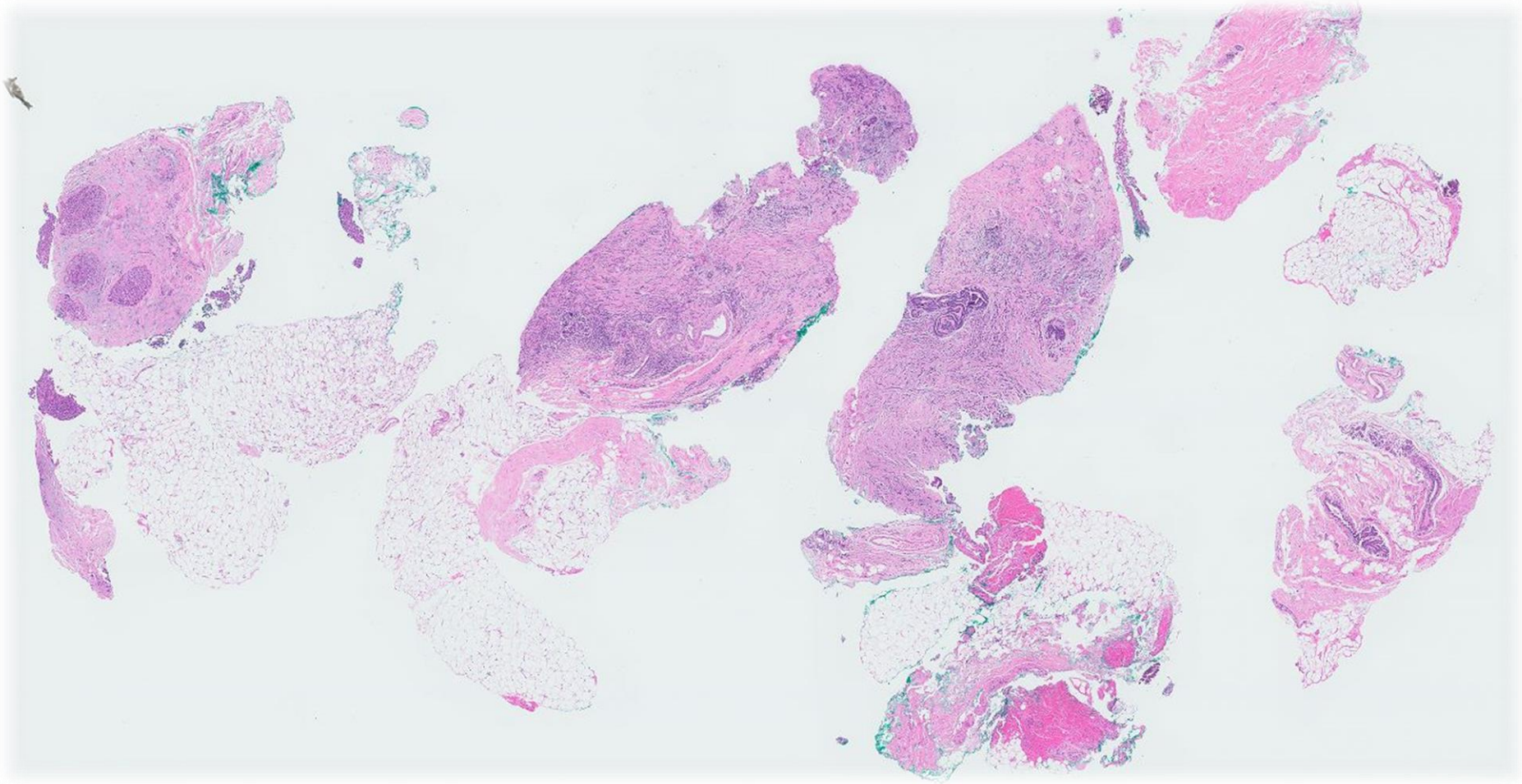
E-cadherin



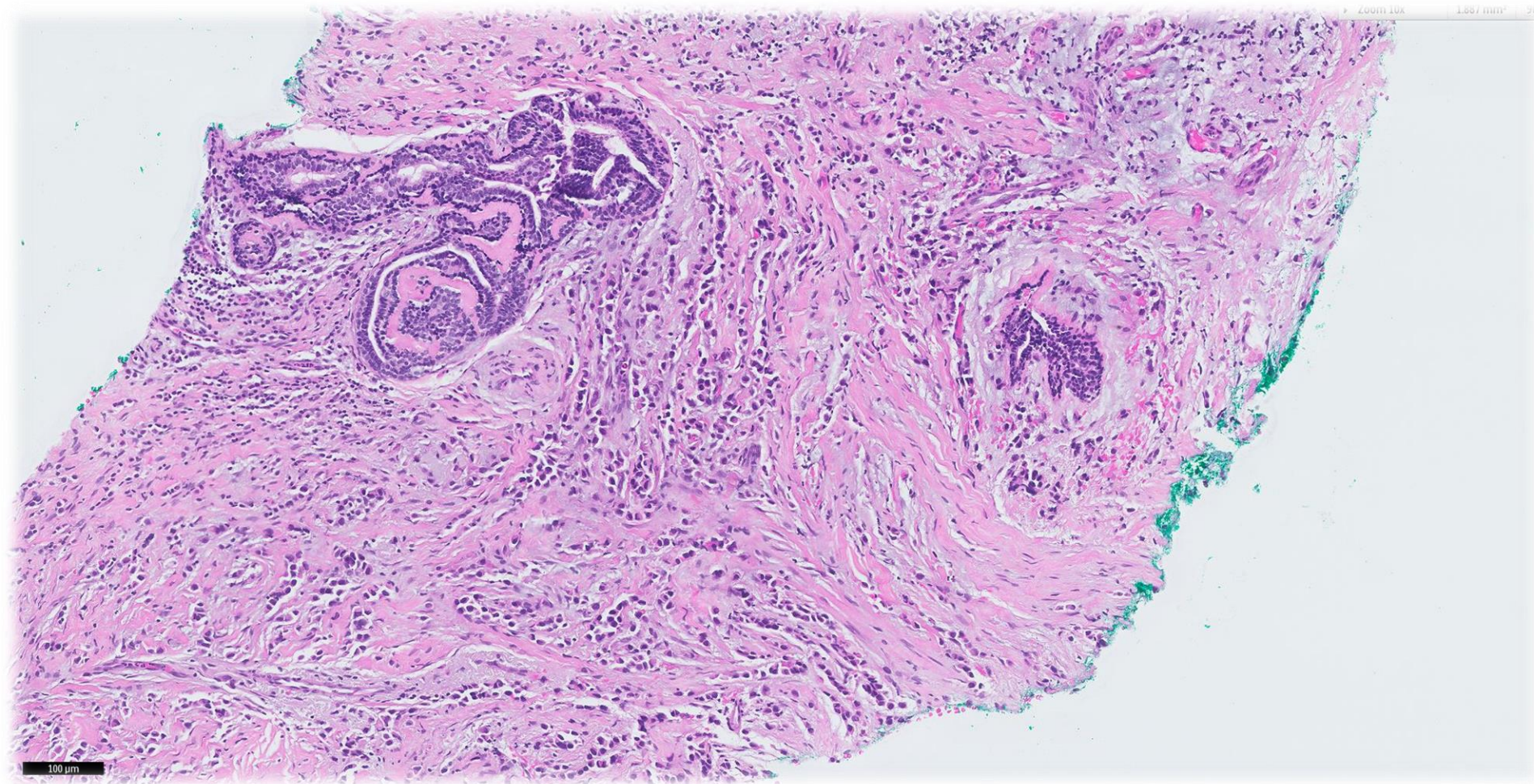
Sentinel lymph node



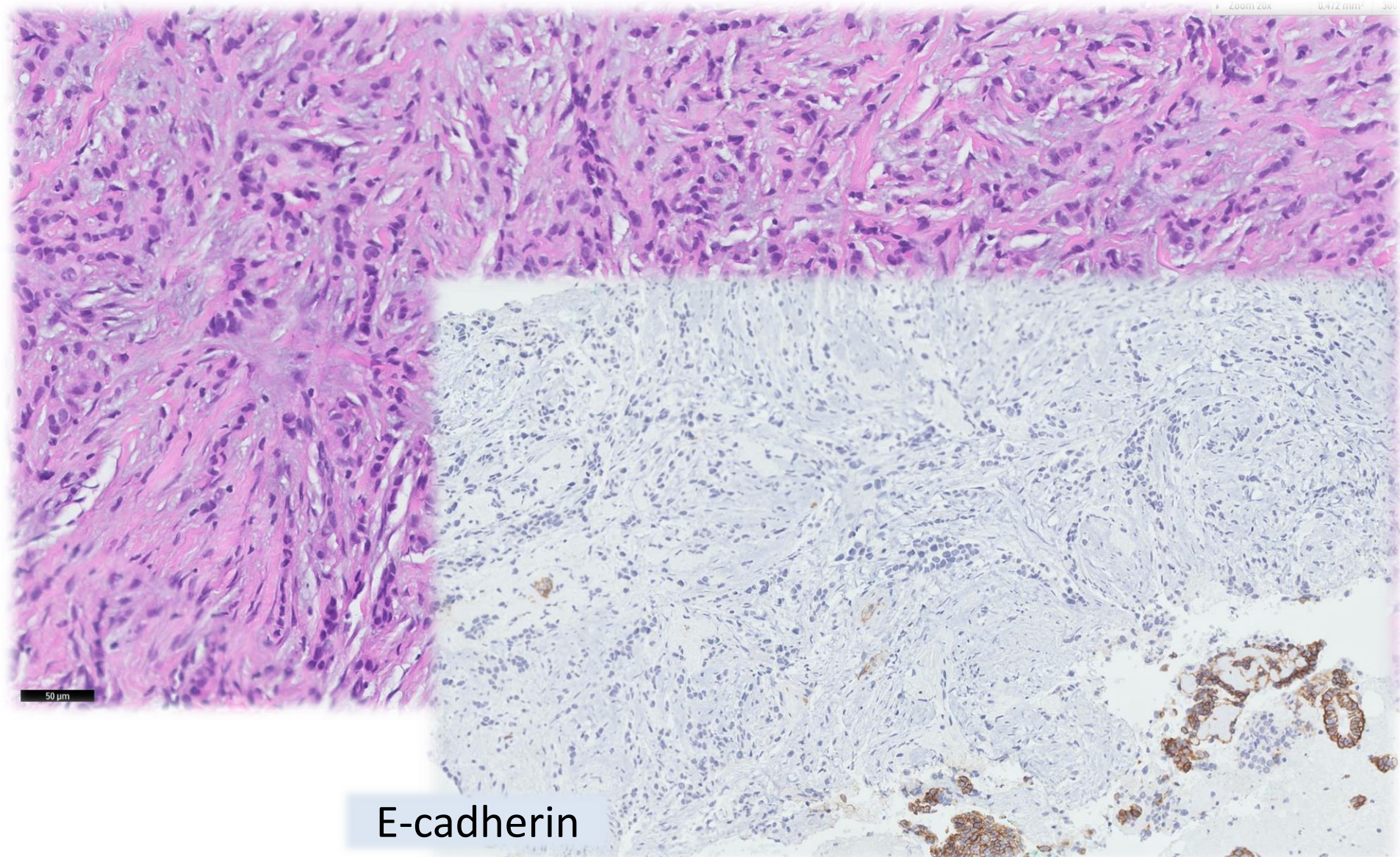
Prior core biopsy



Prior core biopsy

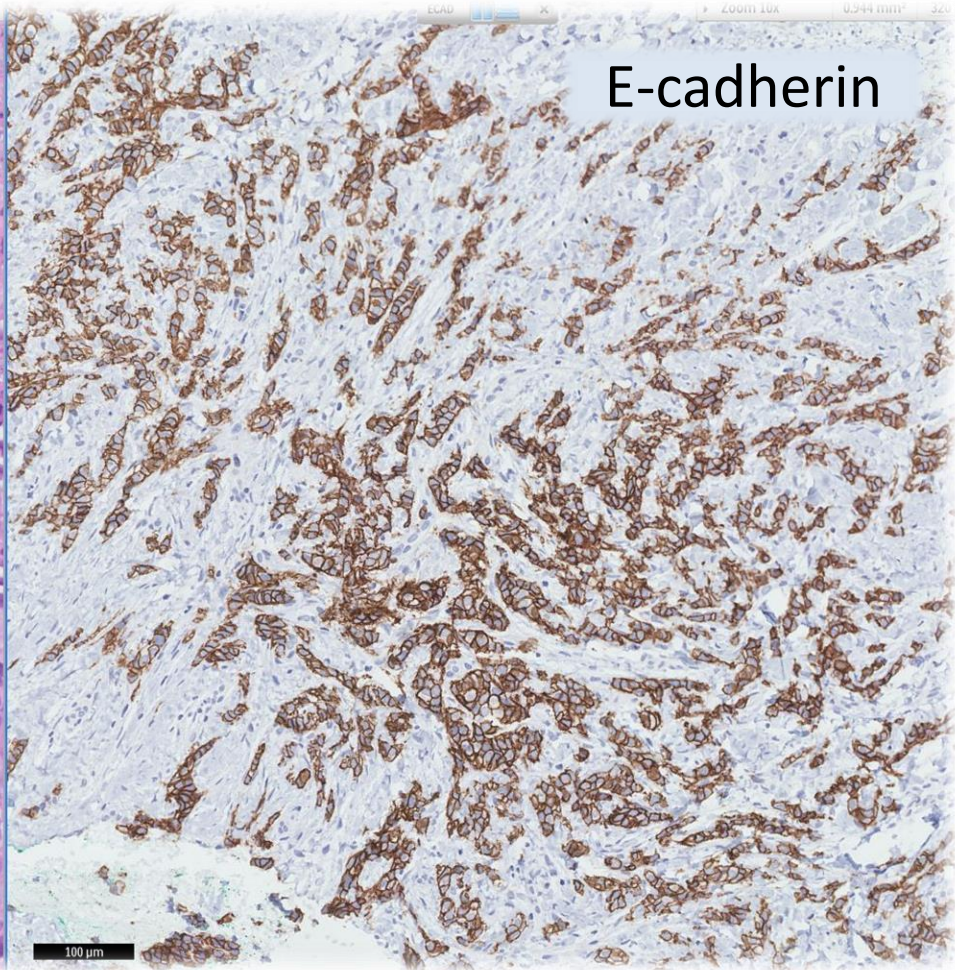
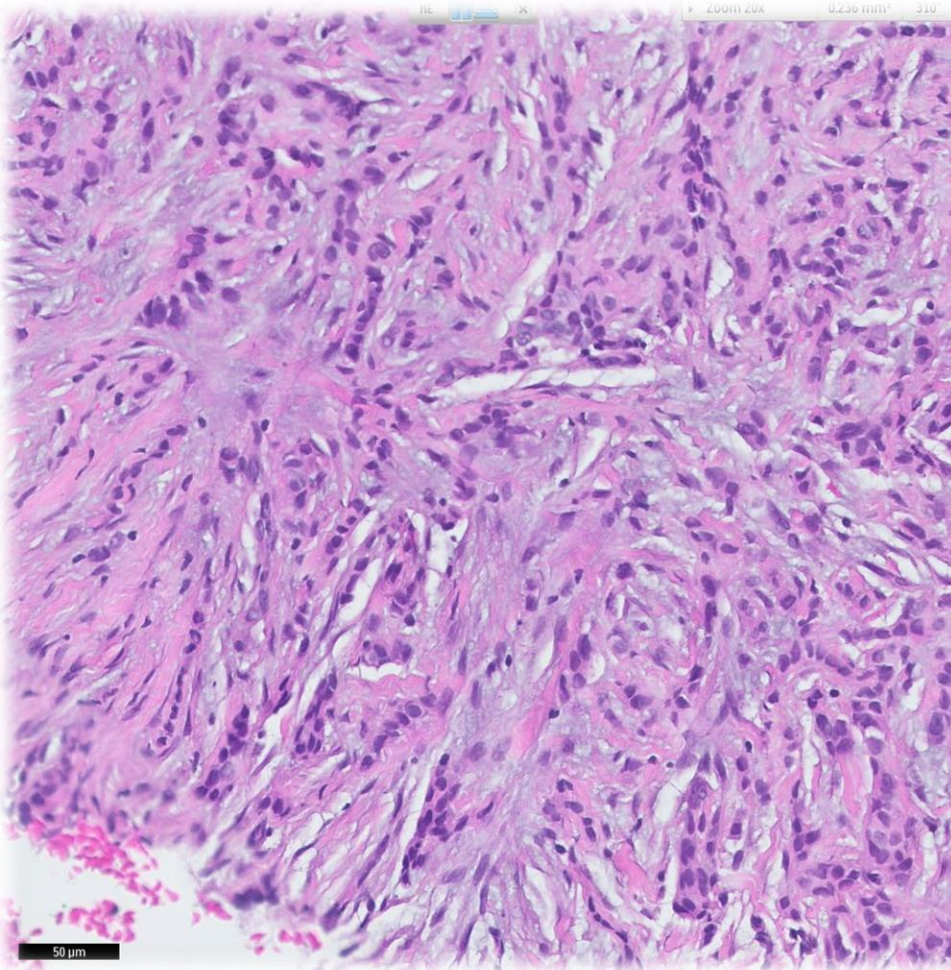


Prior core biopsy



E-cadherin

Prior core biopsy



Diagnosis

- Invasive carcinoma with mixed ductal and lobular features, grade 3, 14mm.
- Ductal carcinoma in situ, high nuclear grade, with necrosis and calcifications.
- Lobular carcinoma in situ.
- One positive sentinel lymph node.



