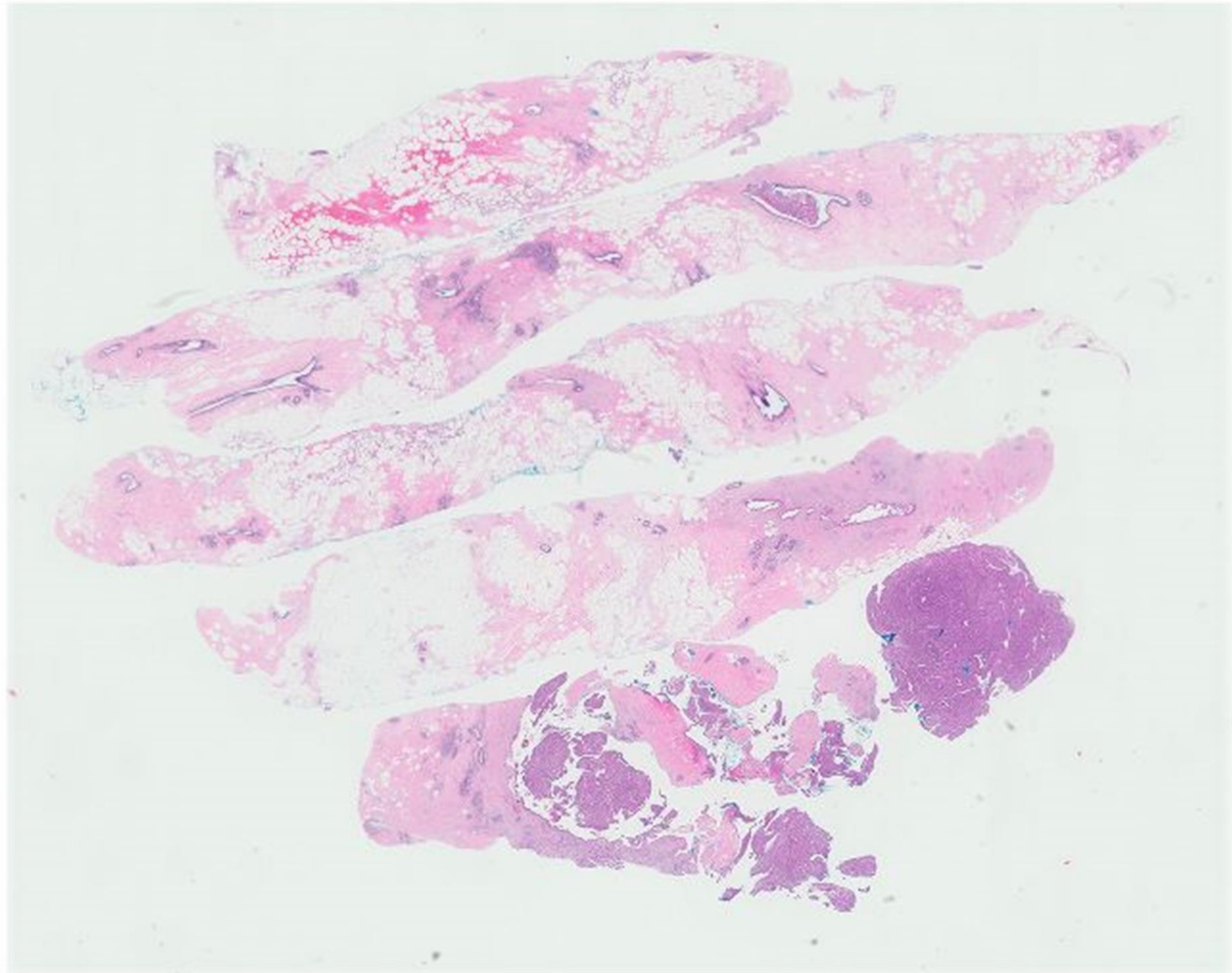


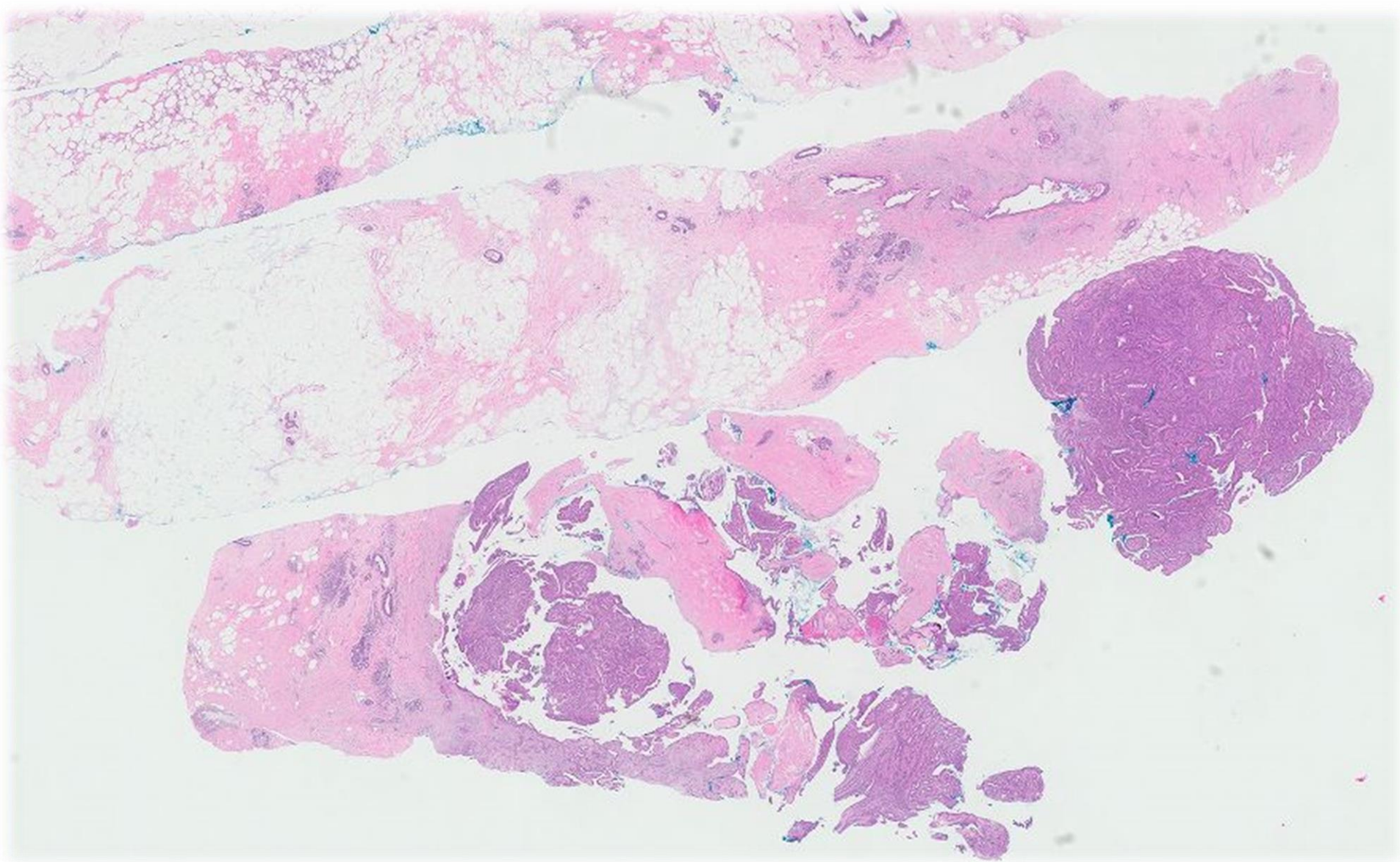
Case 14

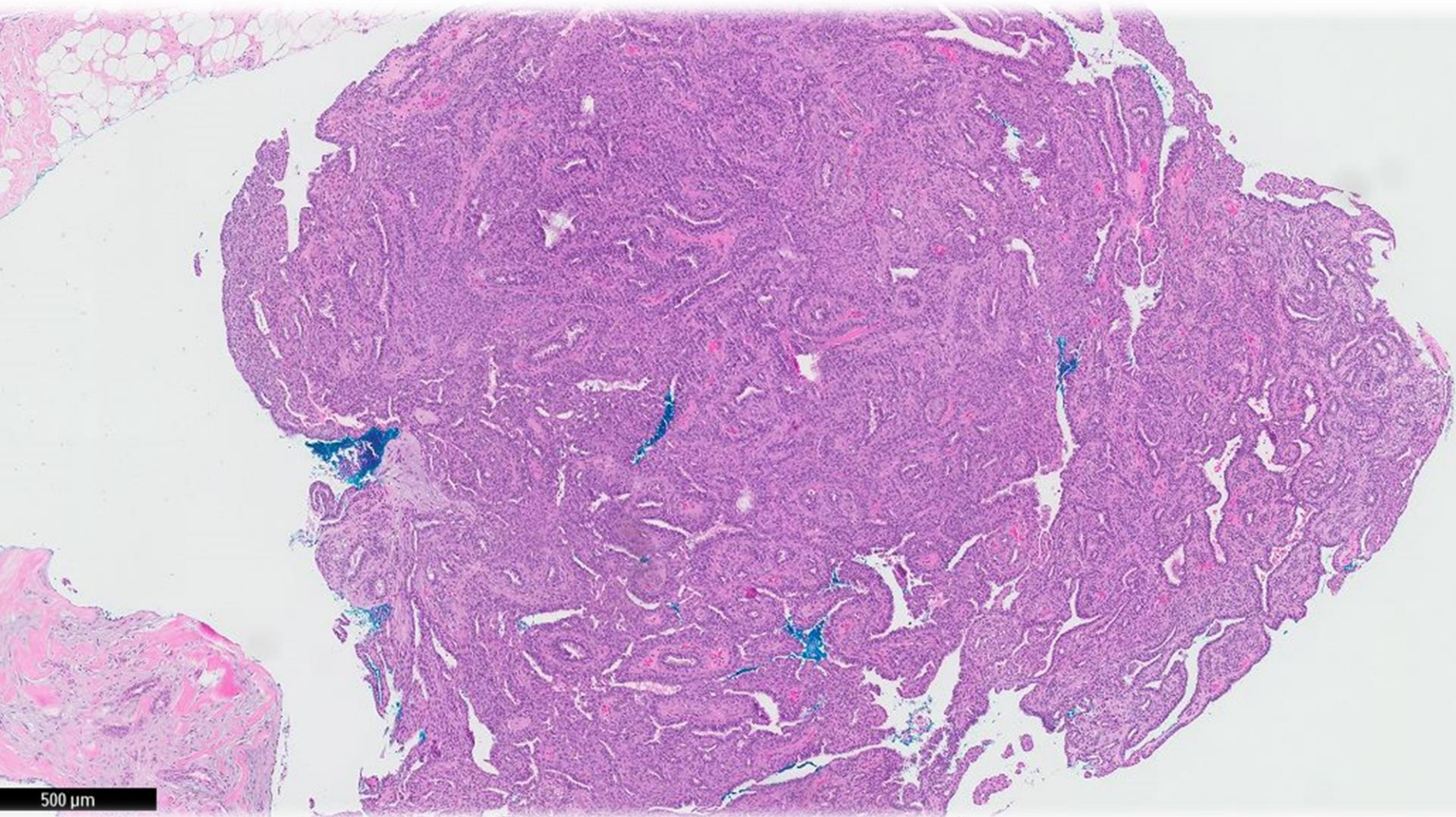
61 year old Chinese lady underwent an ultrasound guided trucut biopsy of a left breast 0800 nodule, which showed portions of an intraductal papillary lesion.

Mammotome excision performed.



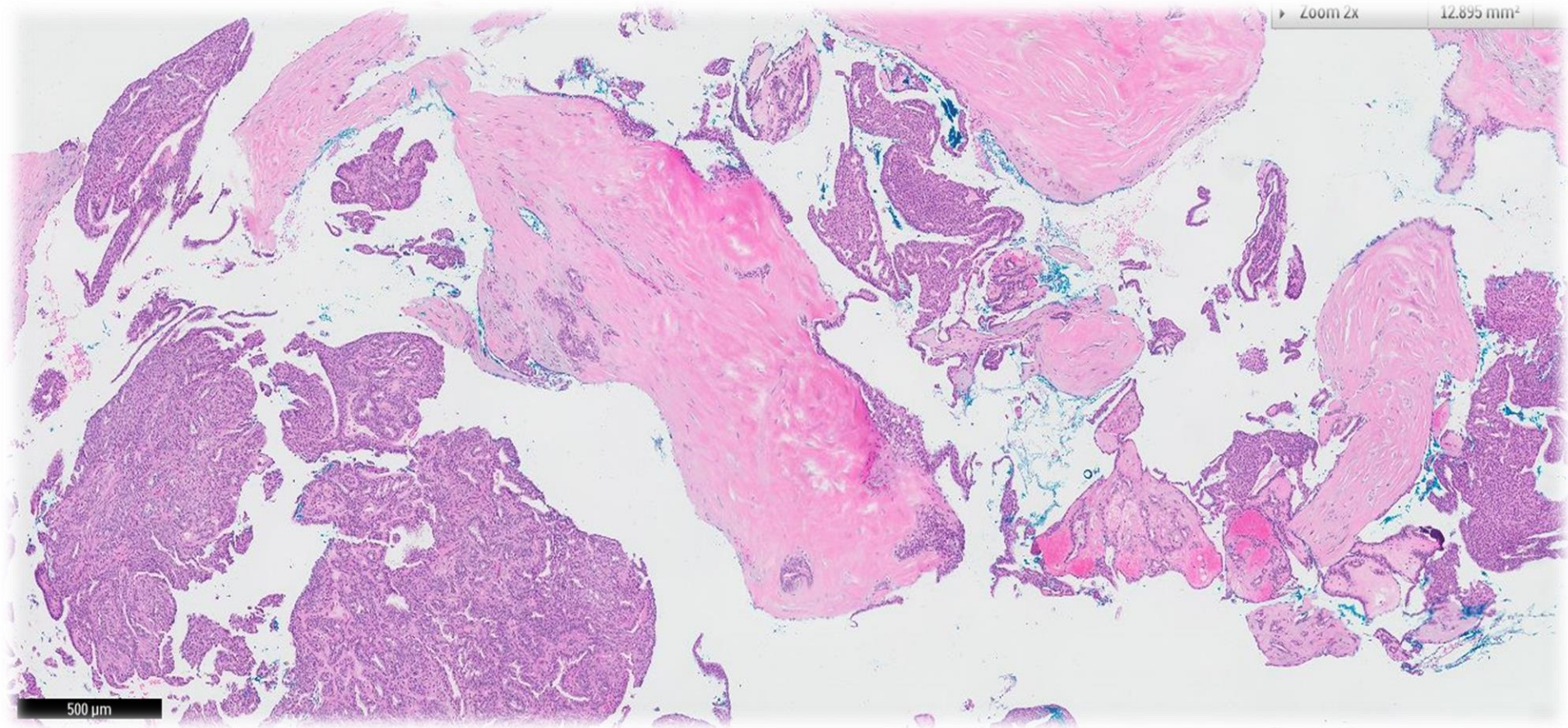






Zoom 2x

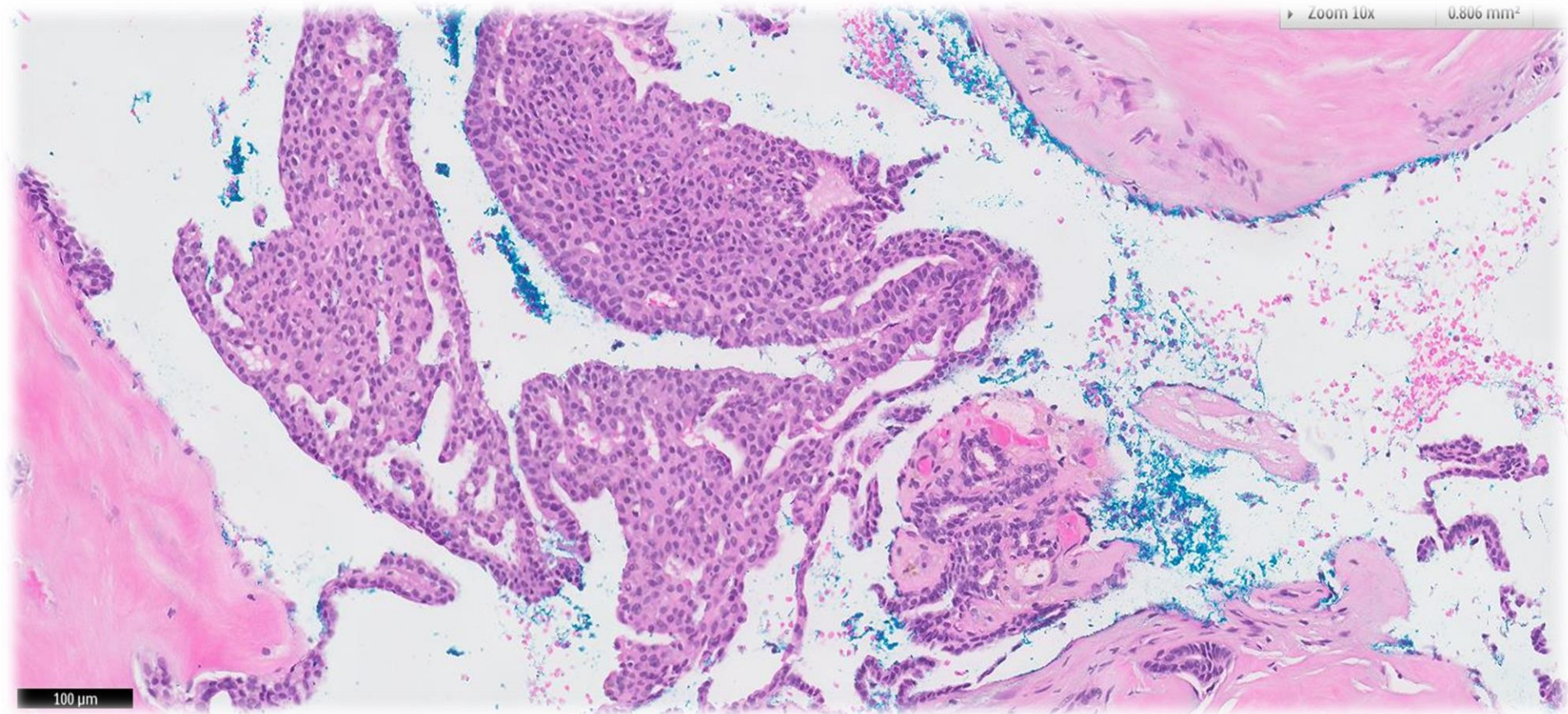
12.895 mm²



500 μm

► Zoom 10x

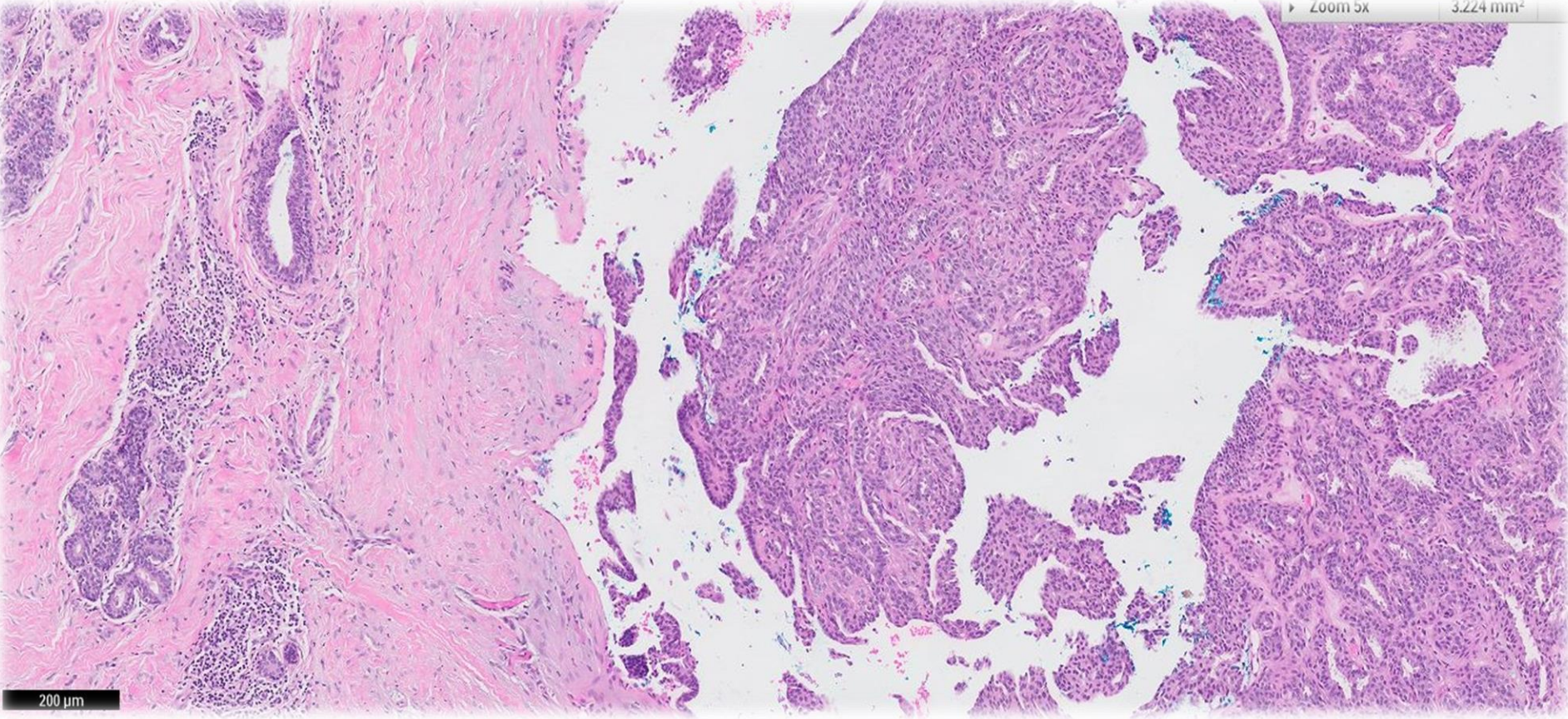
0.806 mm²



100 μm

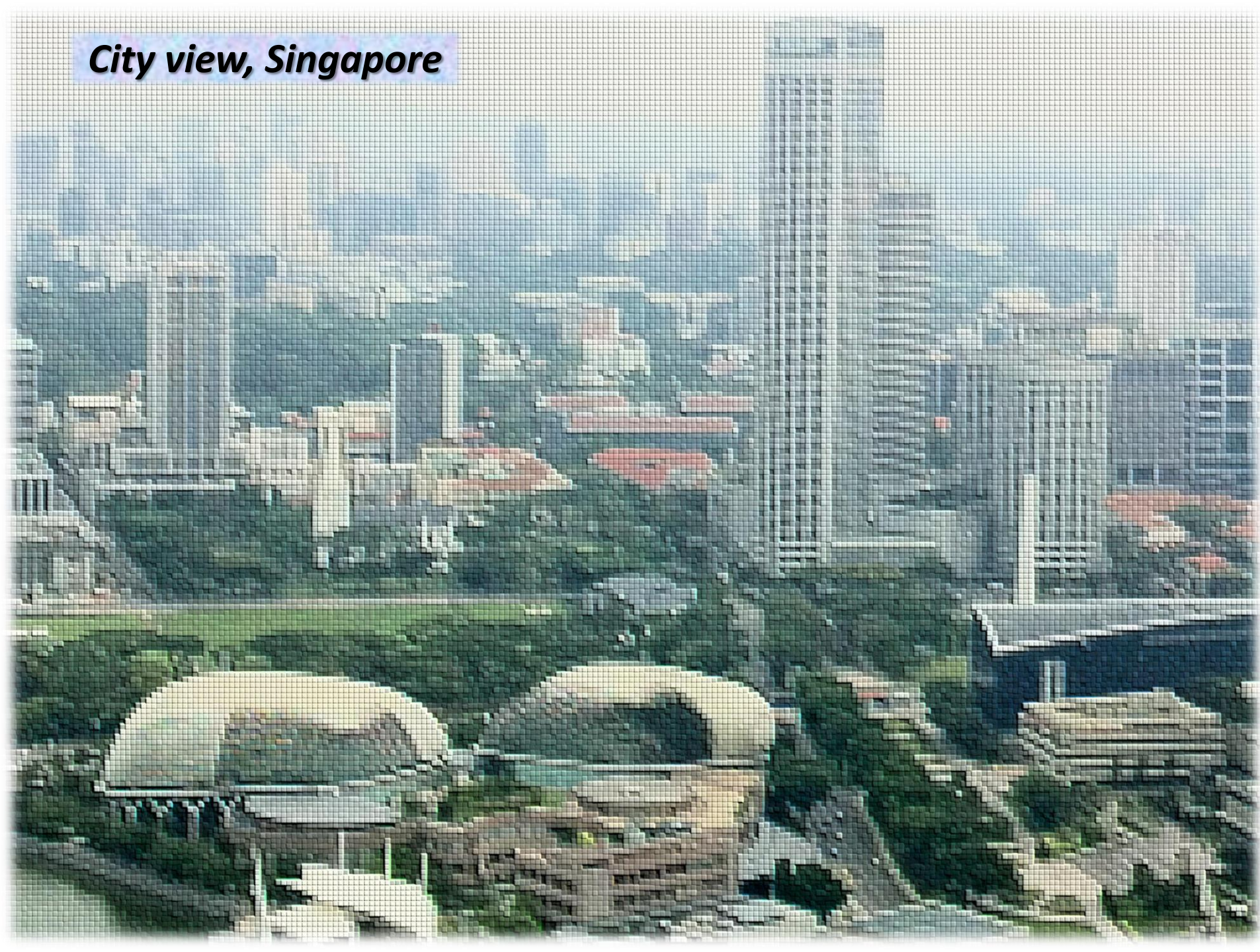
Zoom 5x

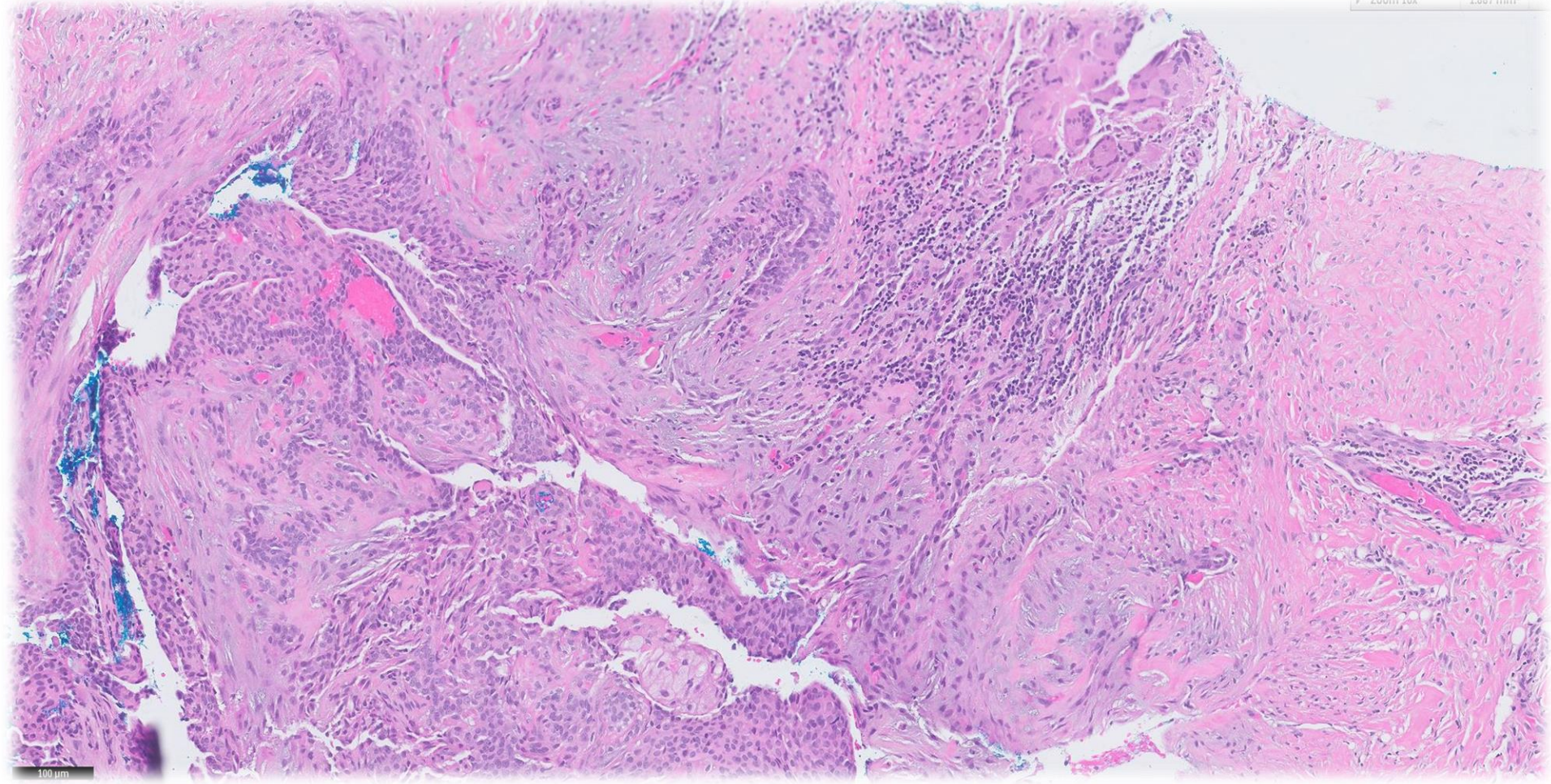
3.224 mm²



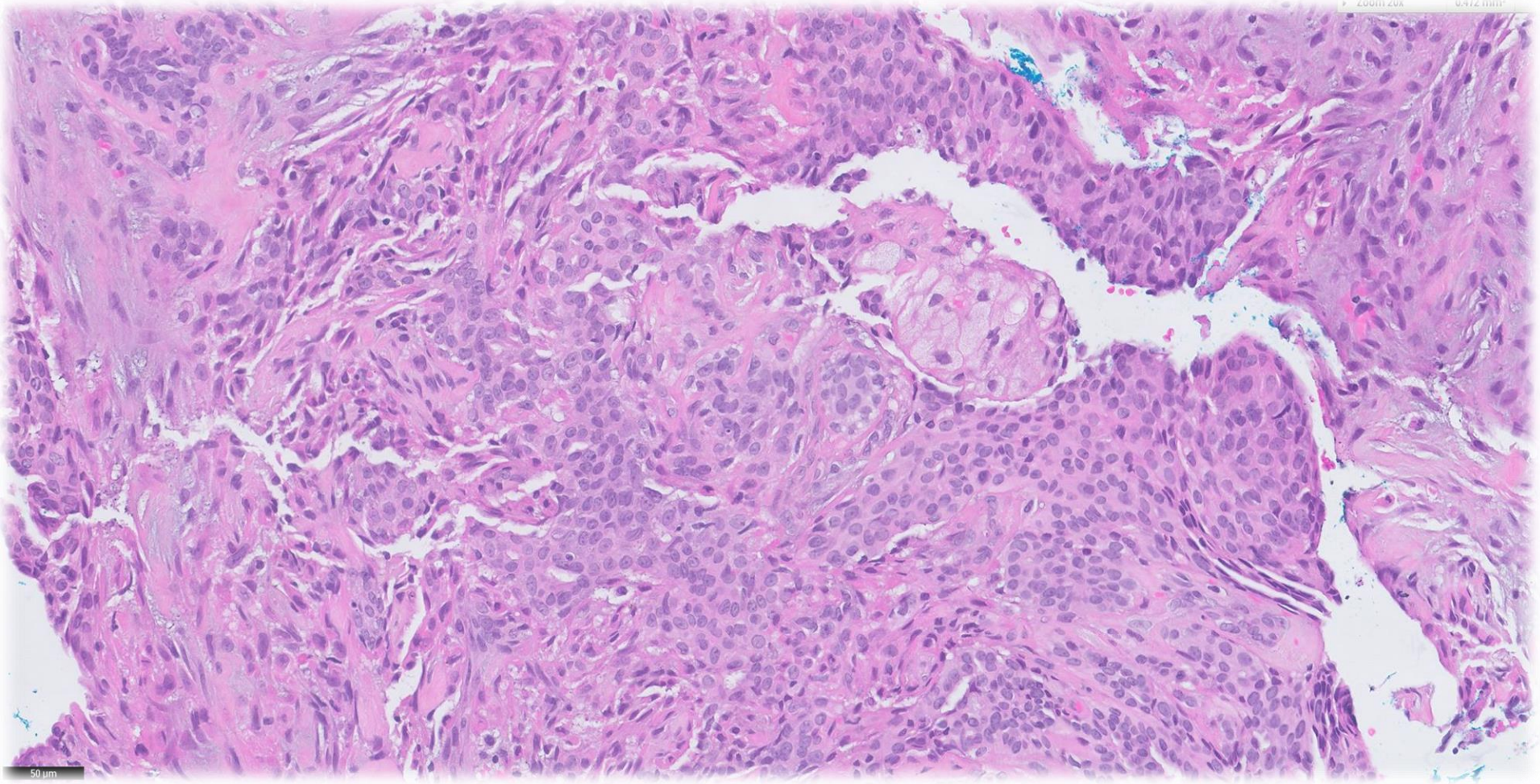
200 μm

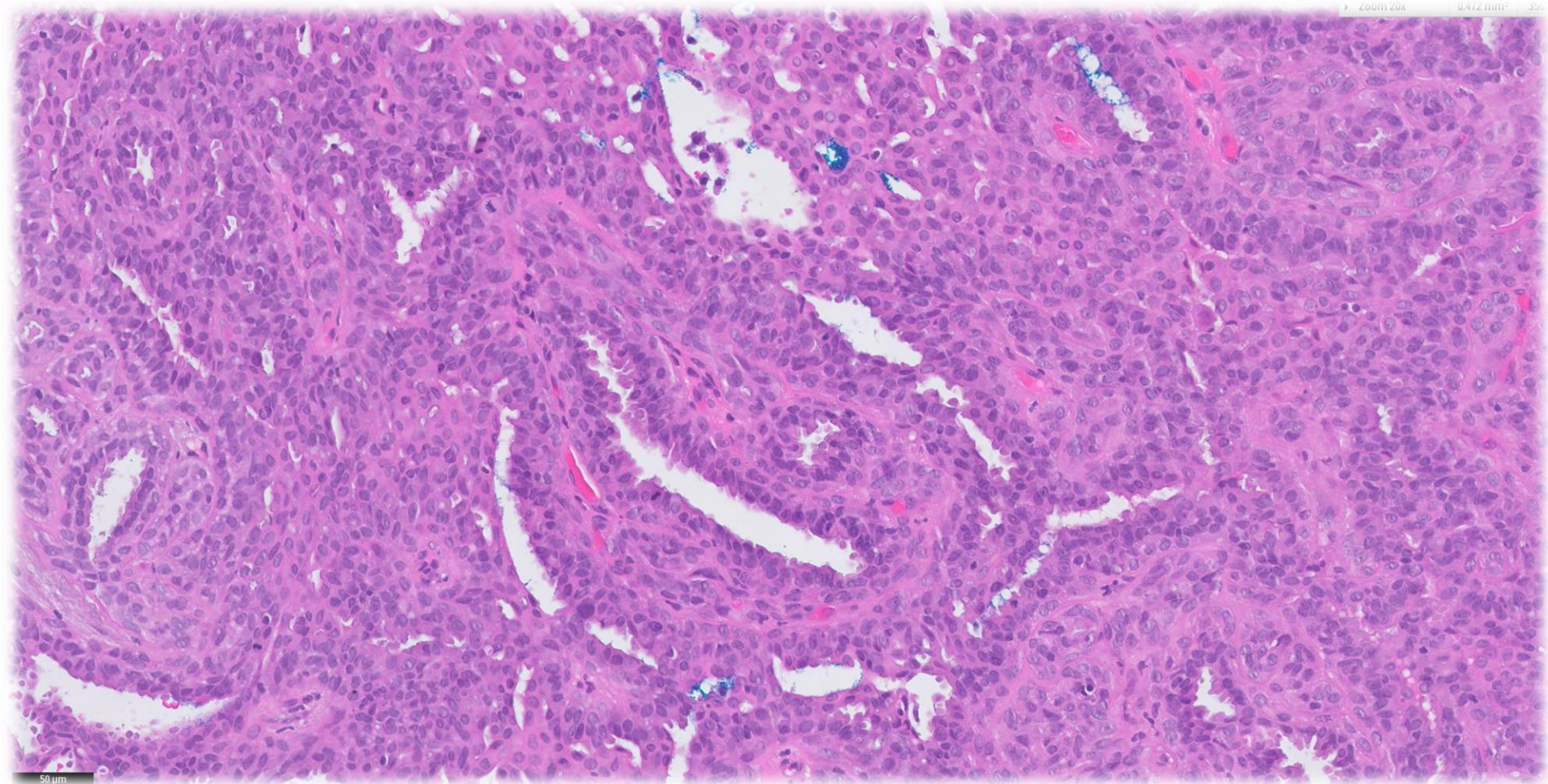
City view, Singapore

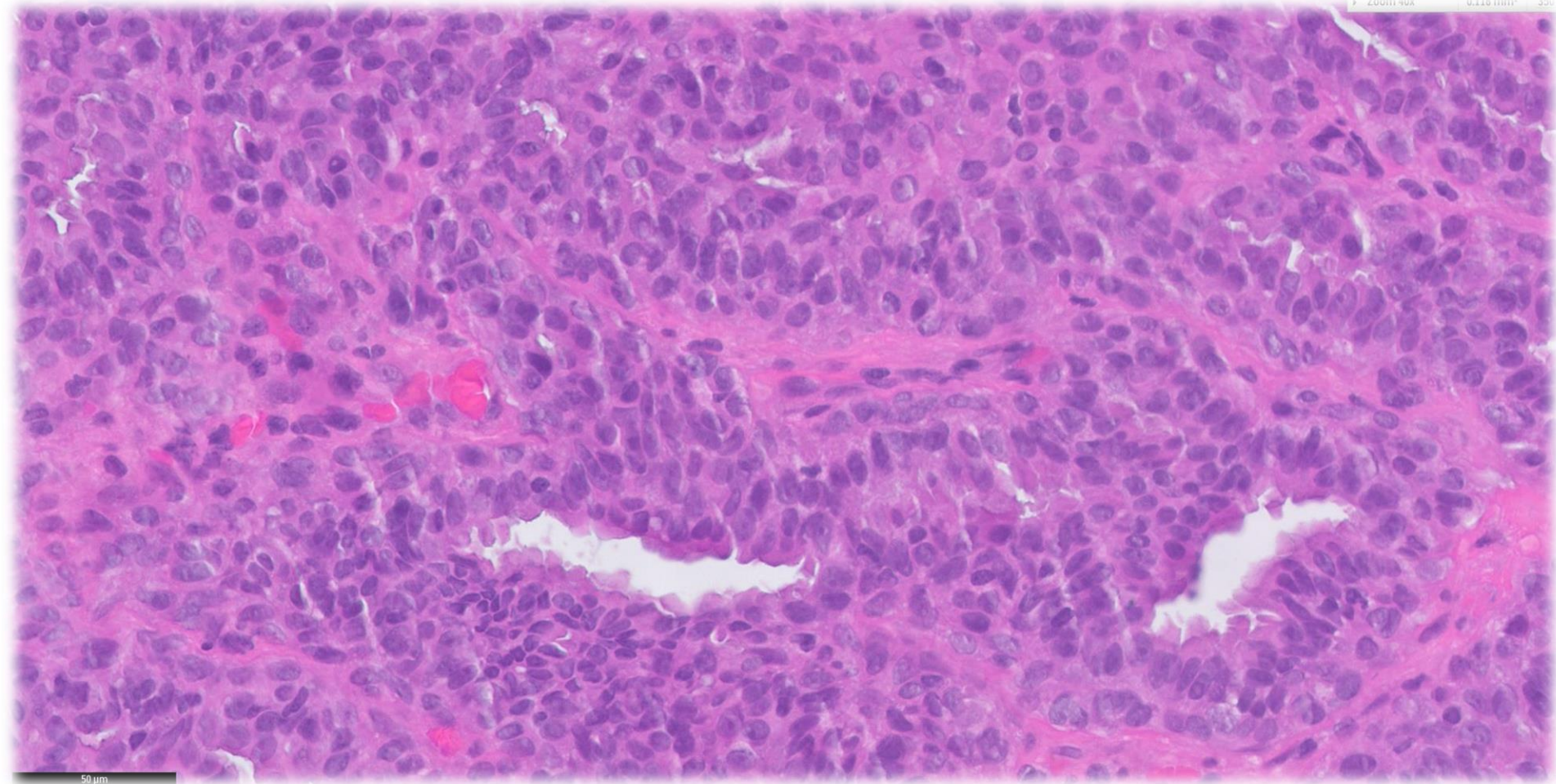


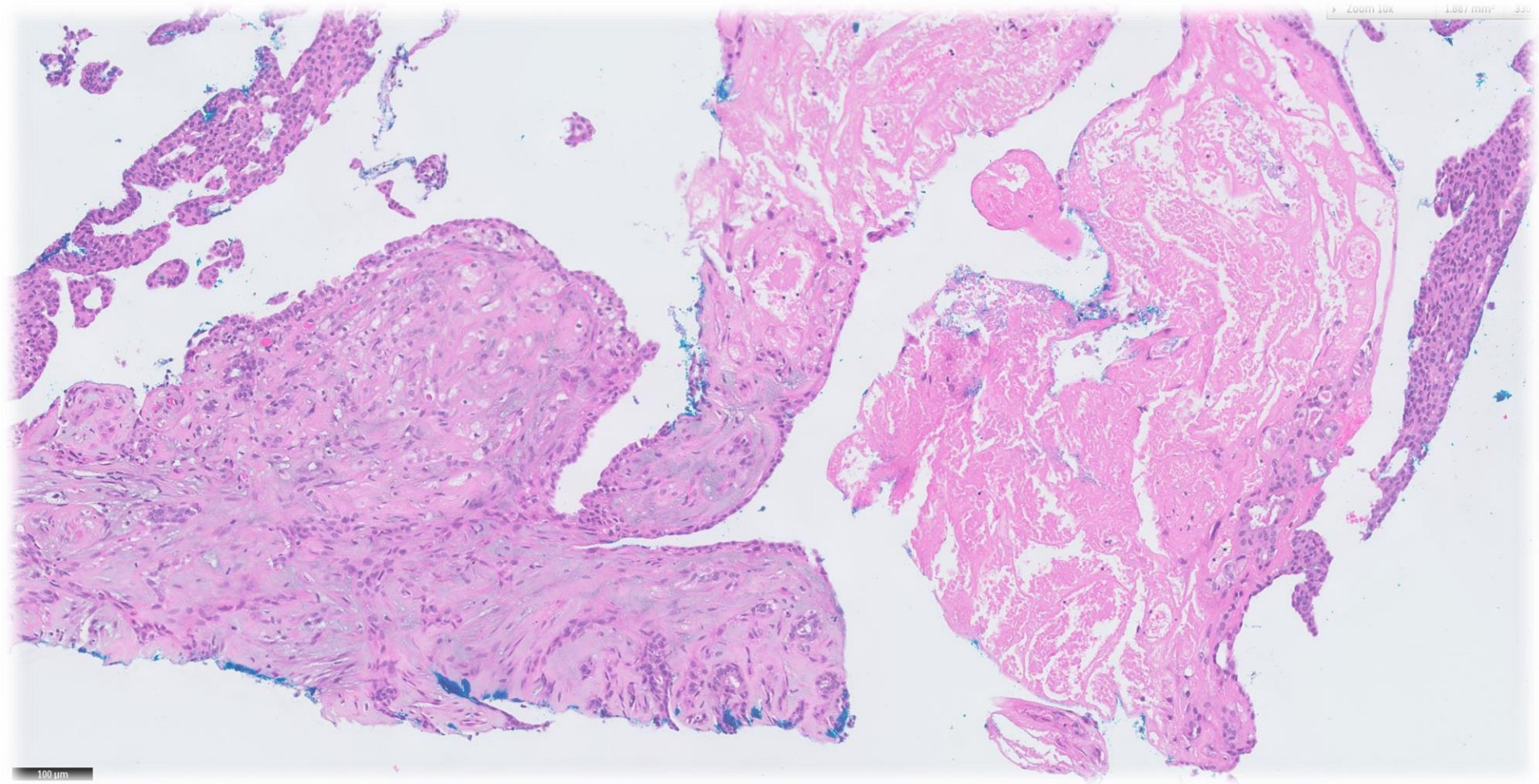


100 μm









Diagnosis

- Mammotome excision of left breast 0800 nodule:

Portions of an intraductal papilloma with moderate to florid usual ductal hyperplasia.
(focal infarction and foreign body giant cell reaction)



