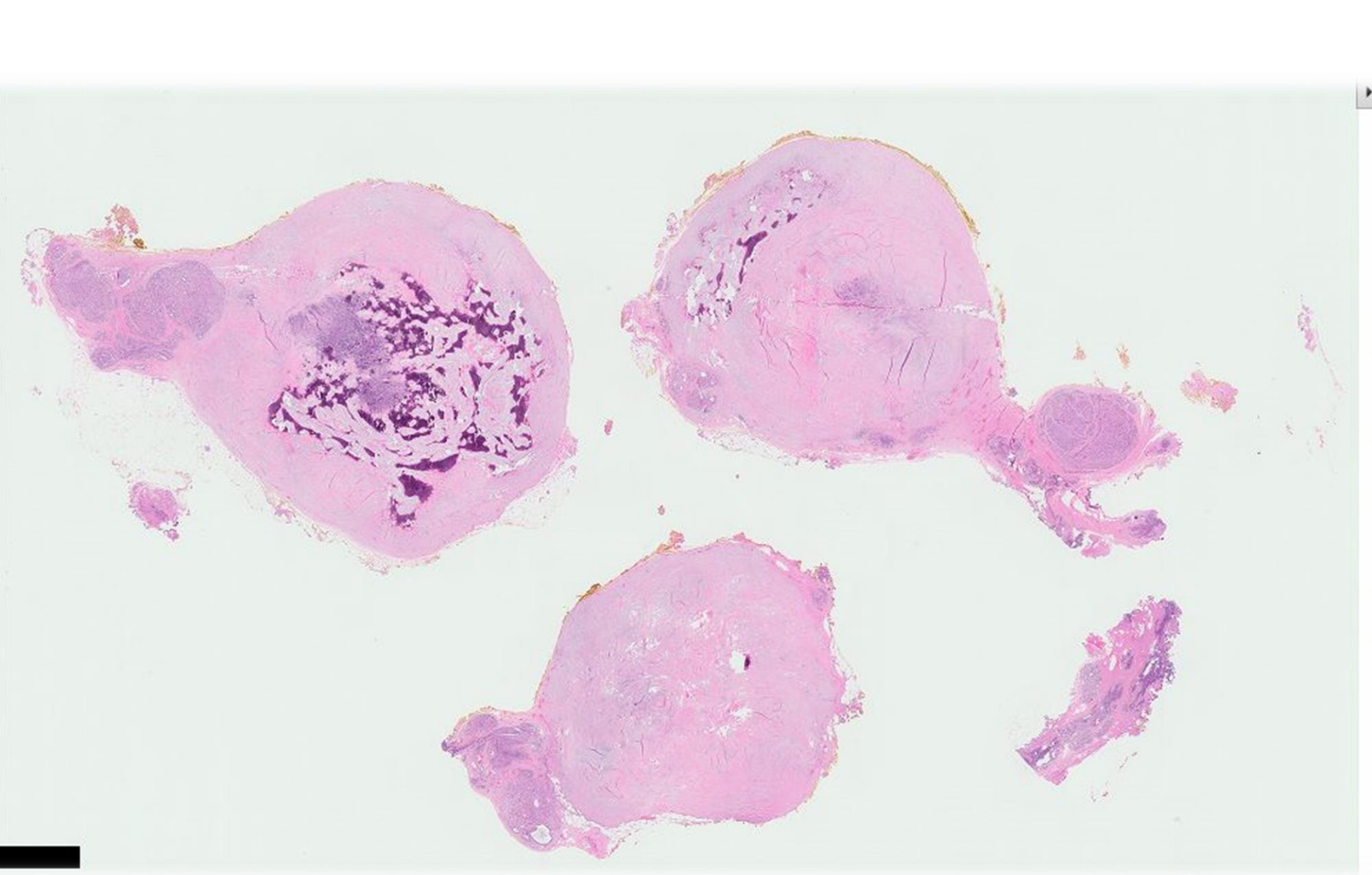


Case 13

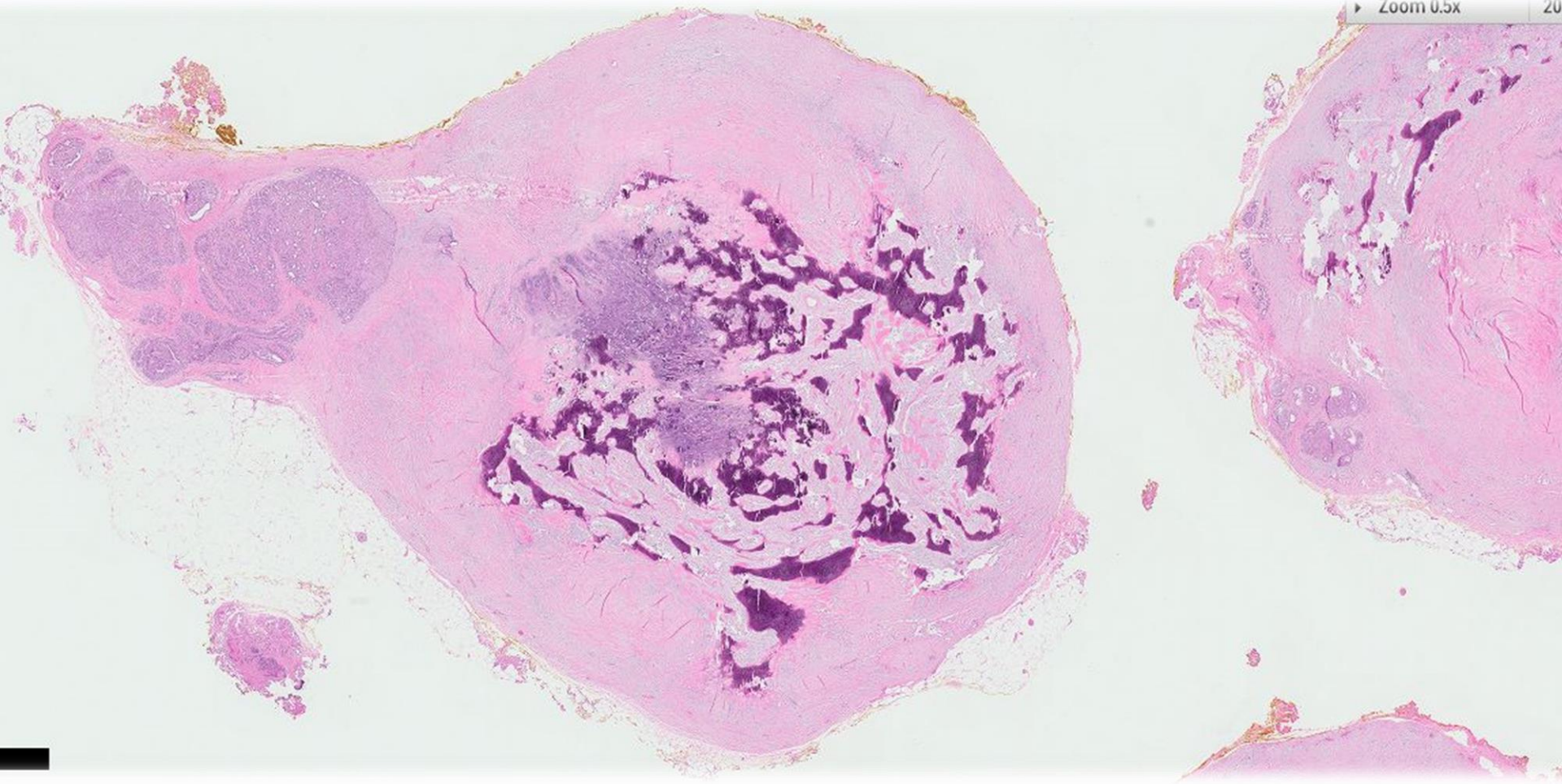
60 year old Malay lady underwent excision biopsy of a left breast lump.





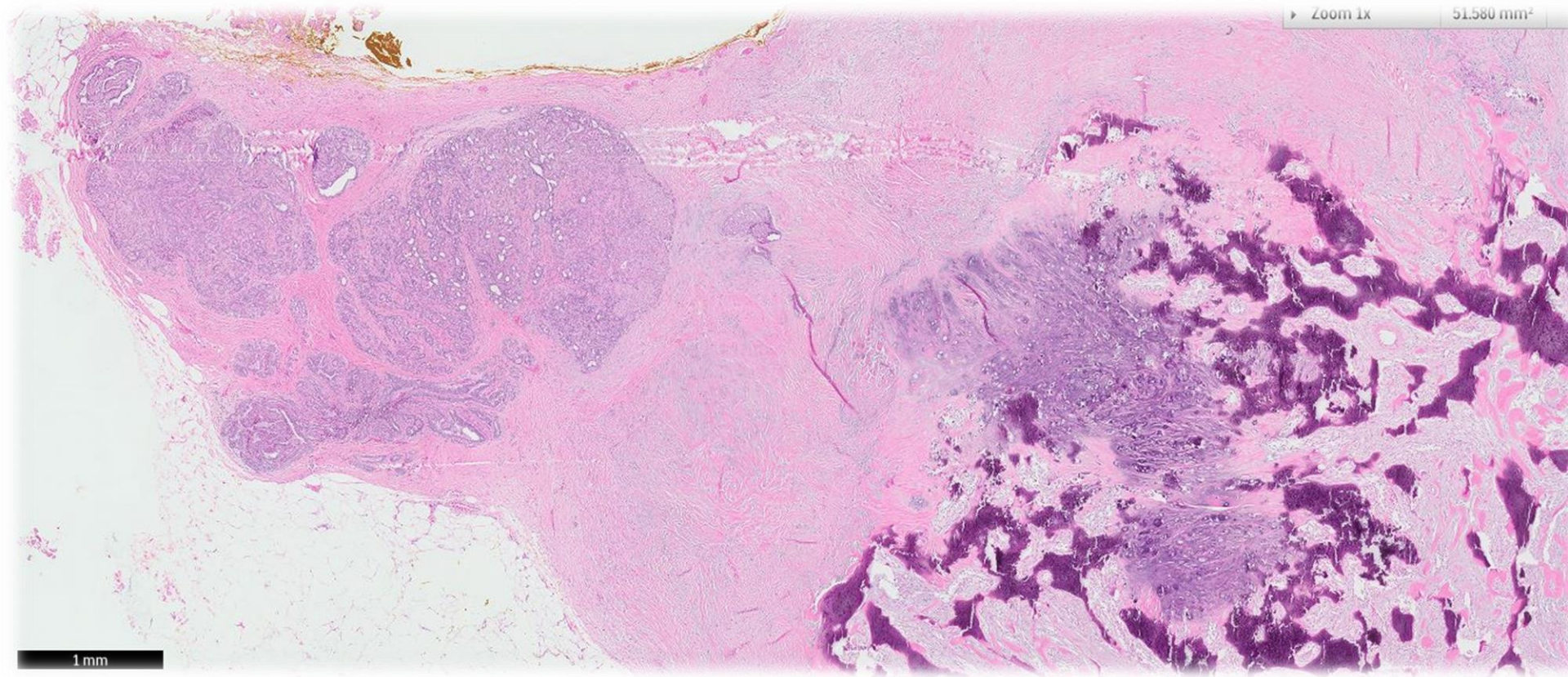
Zoom 0.5x

20



Zoom 1x

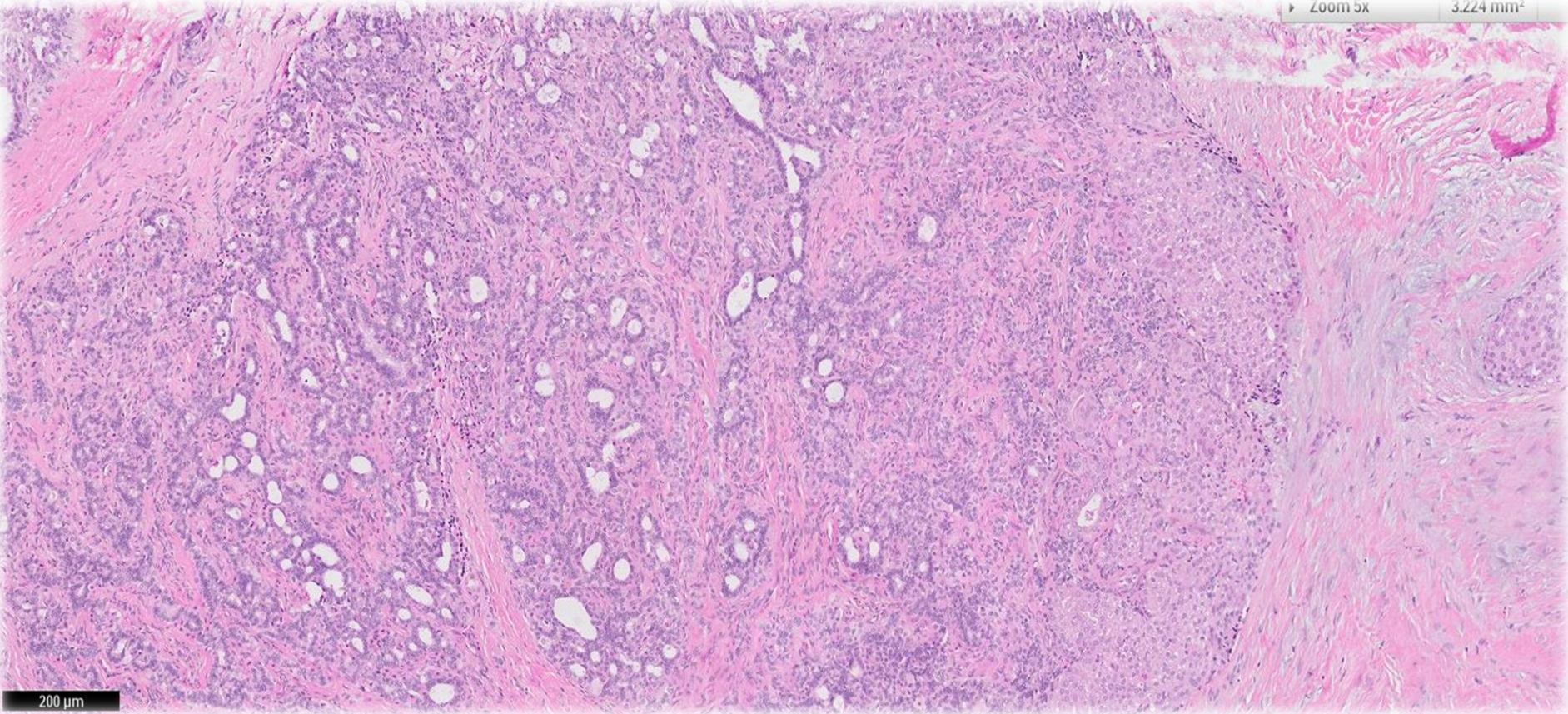
51.580 mm²



1 mm

▶ Zoom 5x

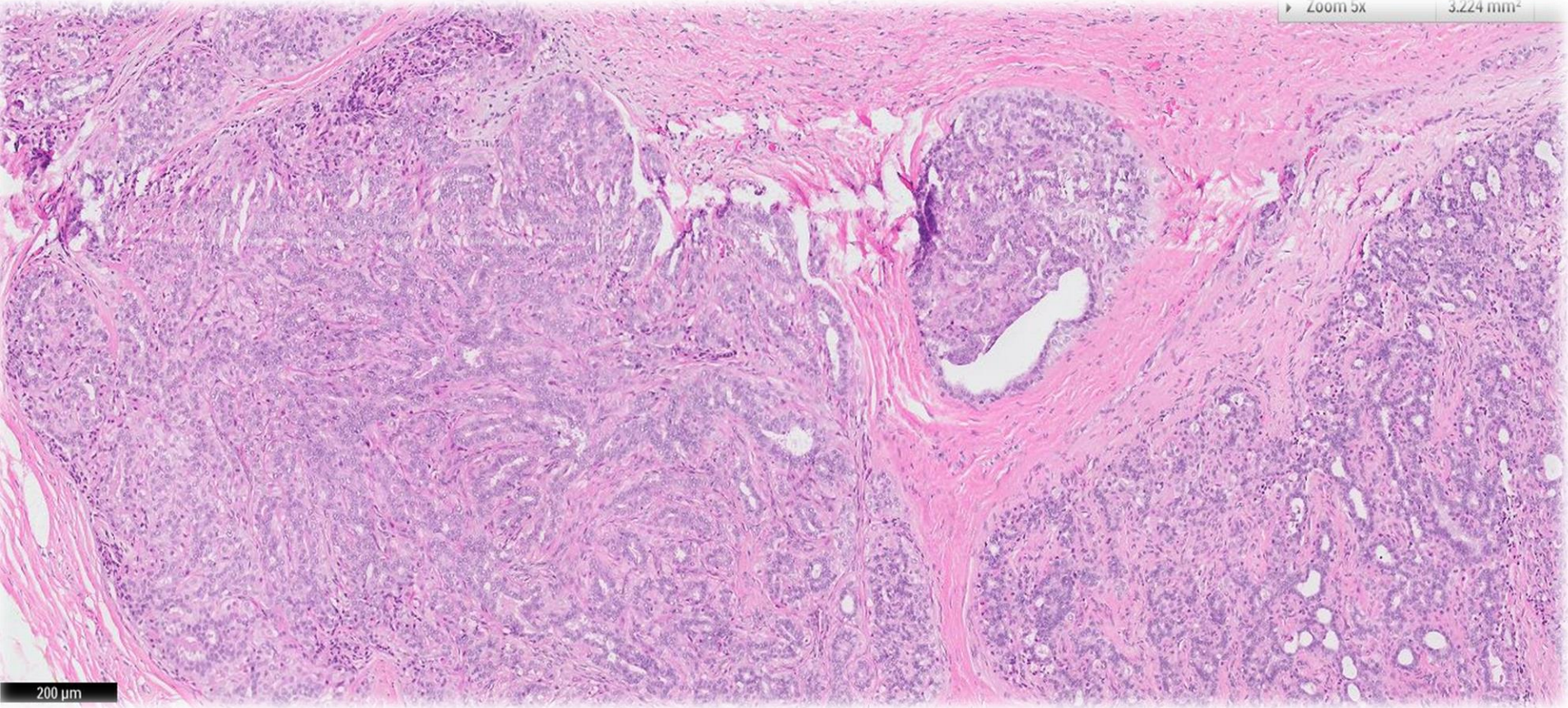
3.224 mm²



200 μm

Zoom 5x

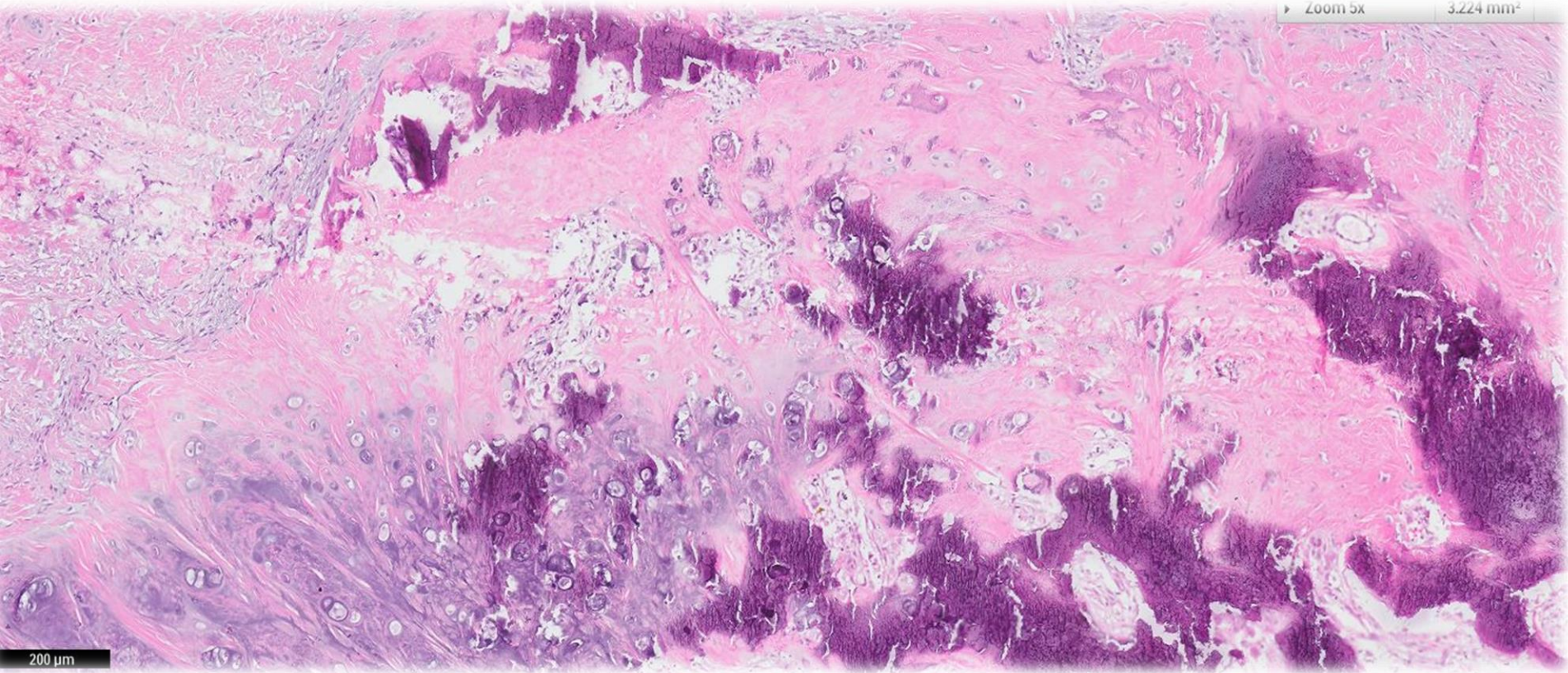
3.224 mm²



200 μm

Zoom 5x

3.224 mm²

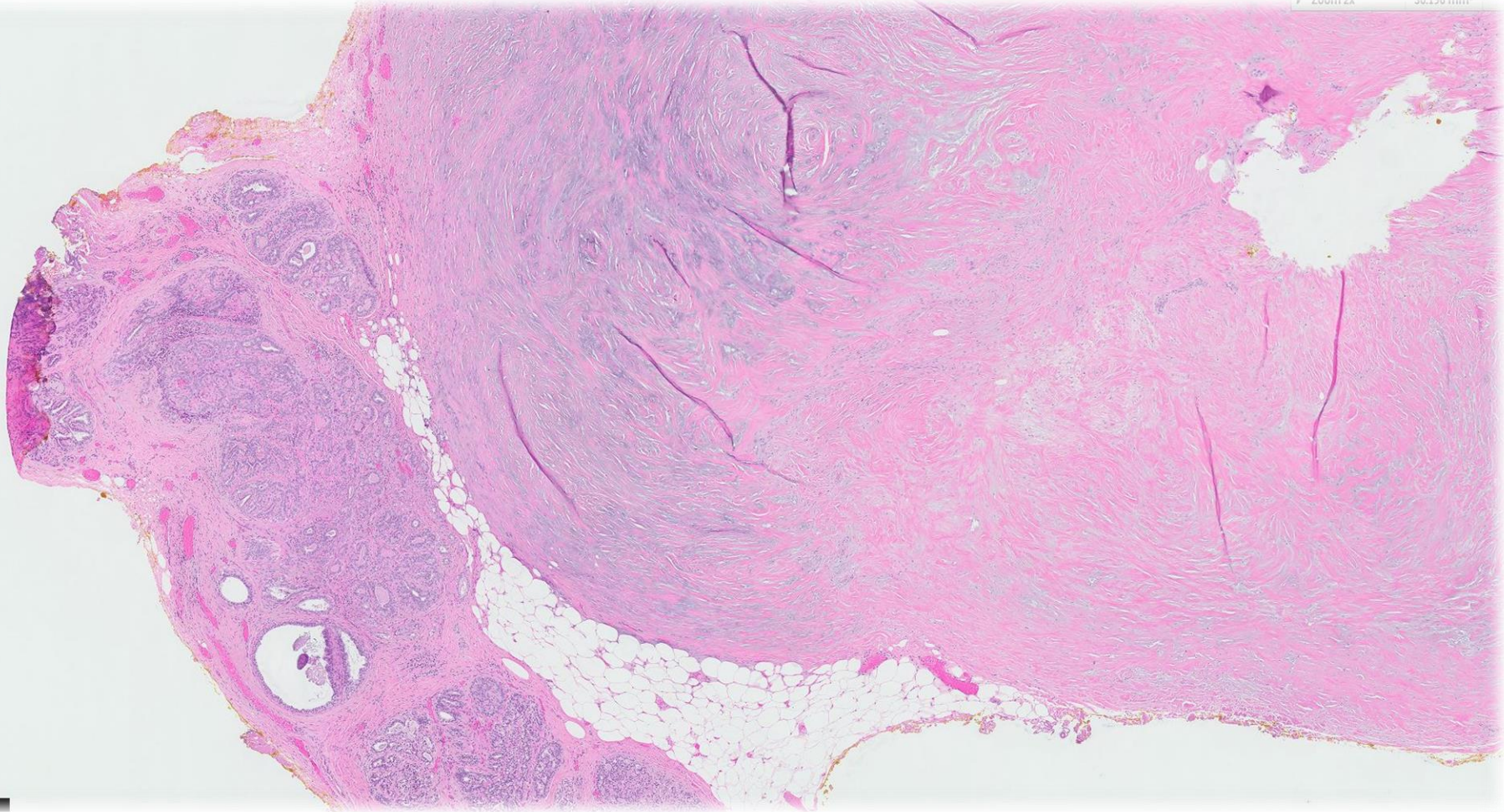


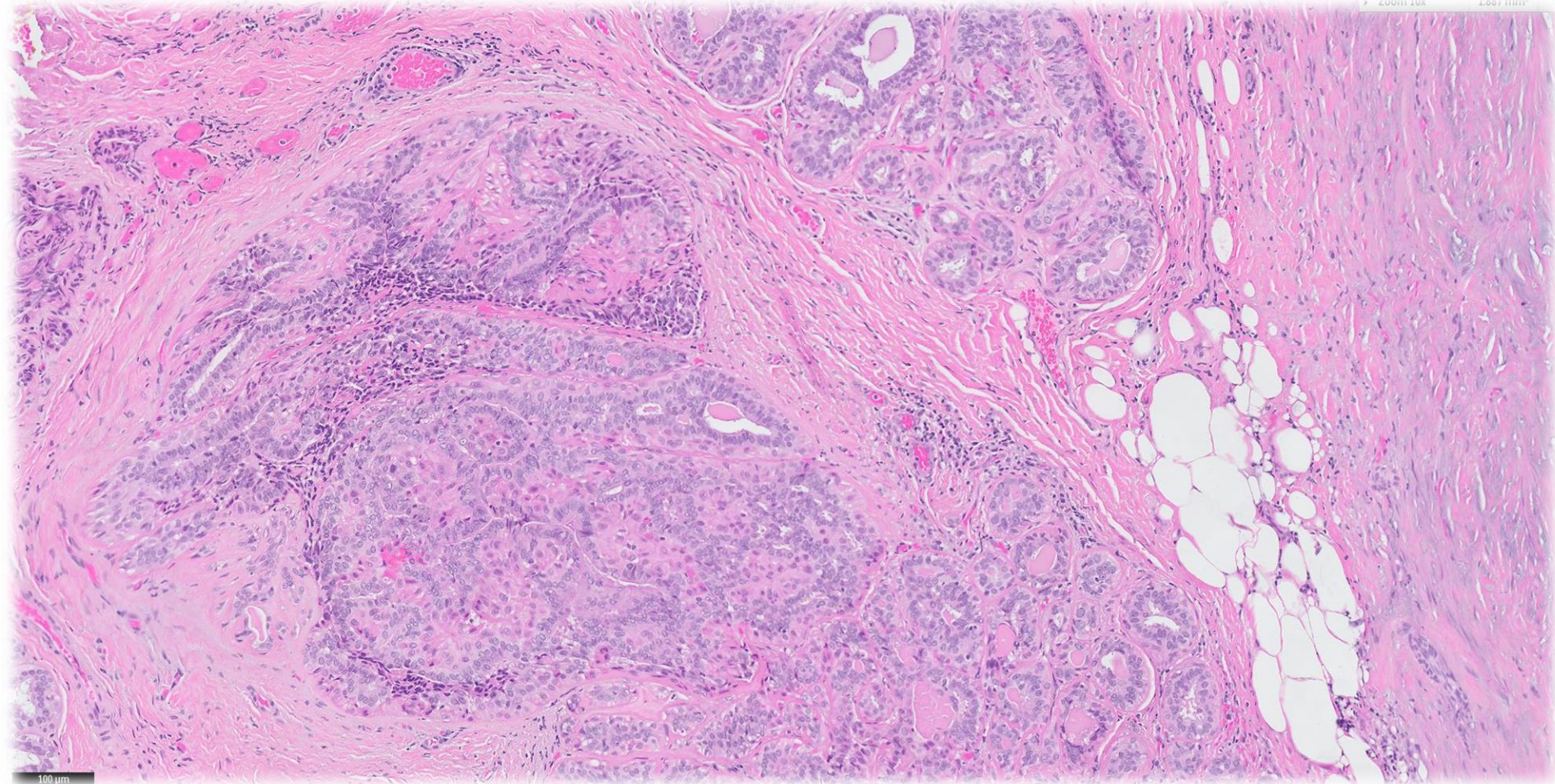
200 μ m

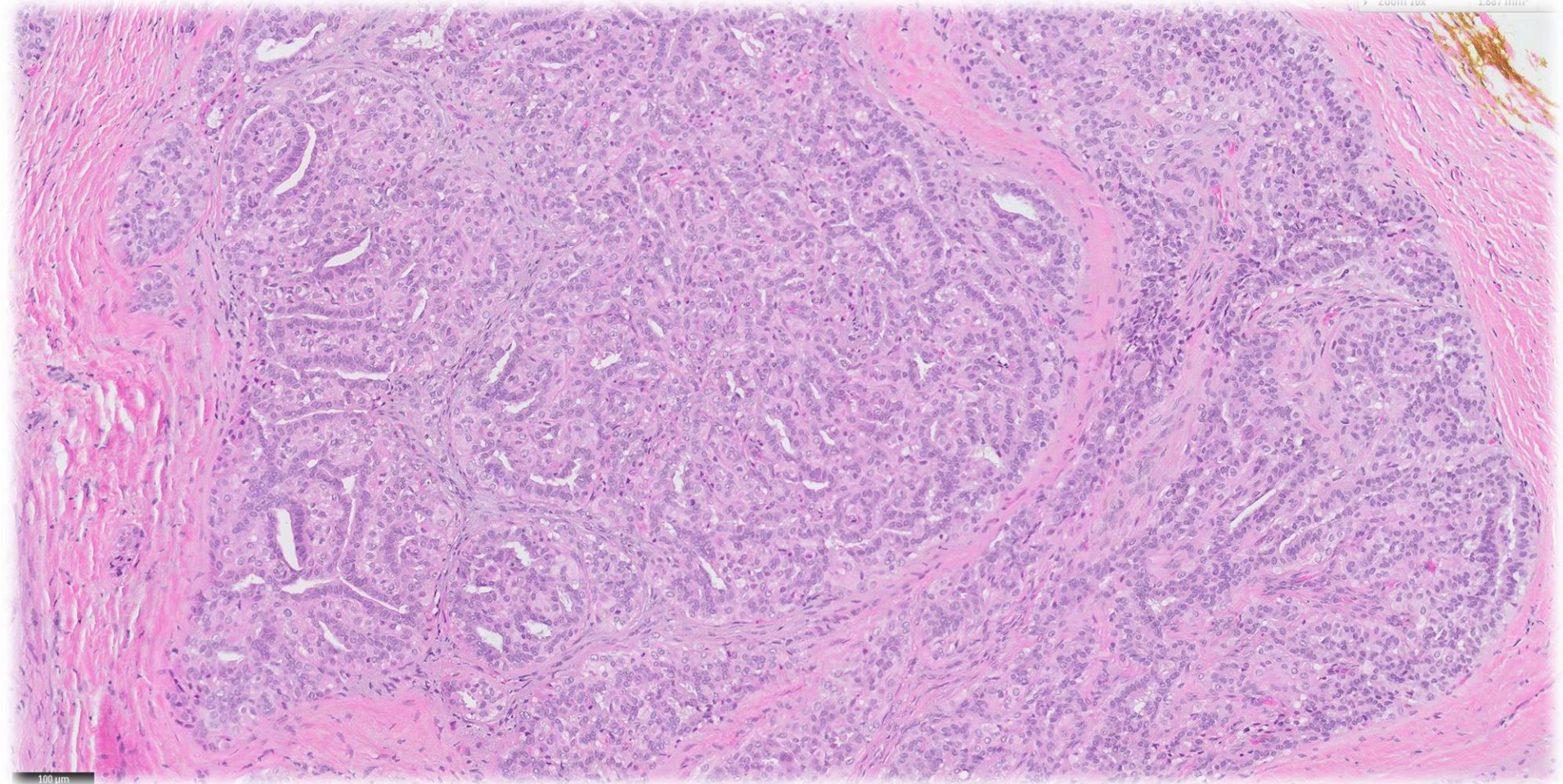
Marina Bay Sands & Esplanade

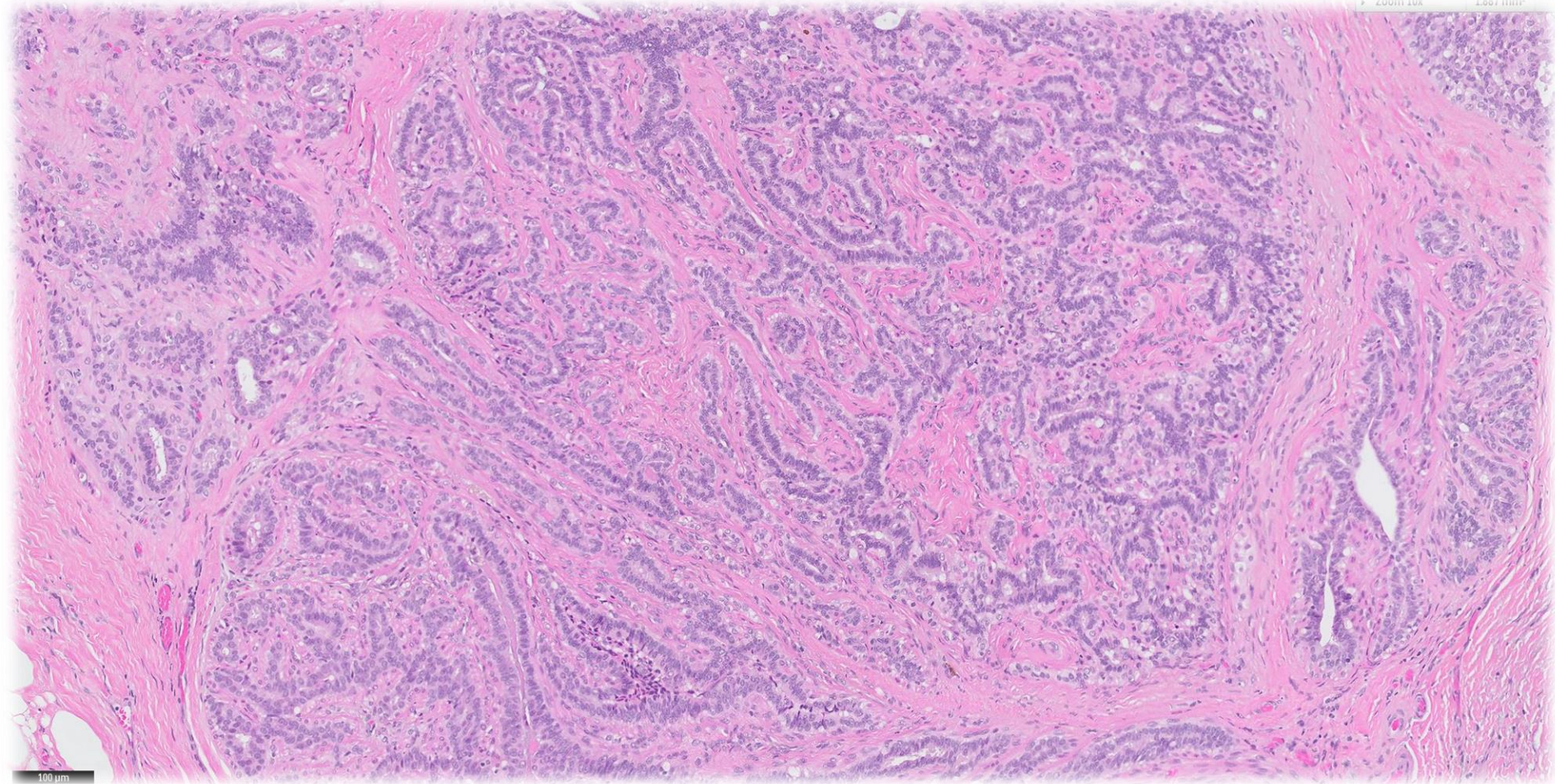




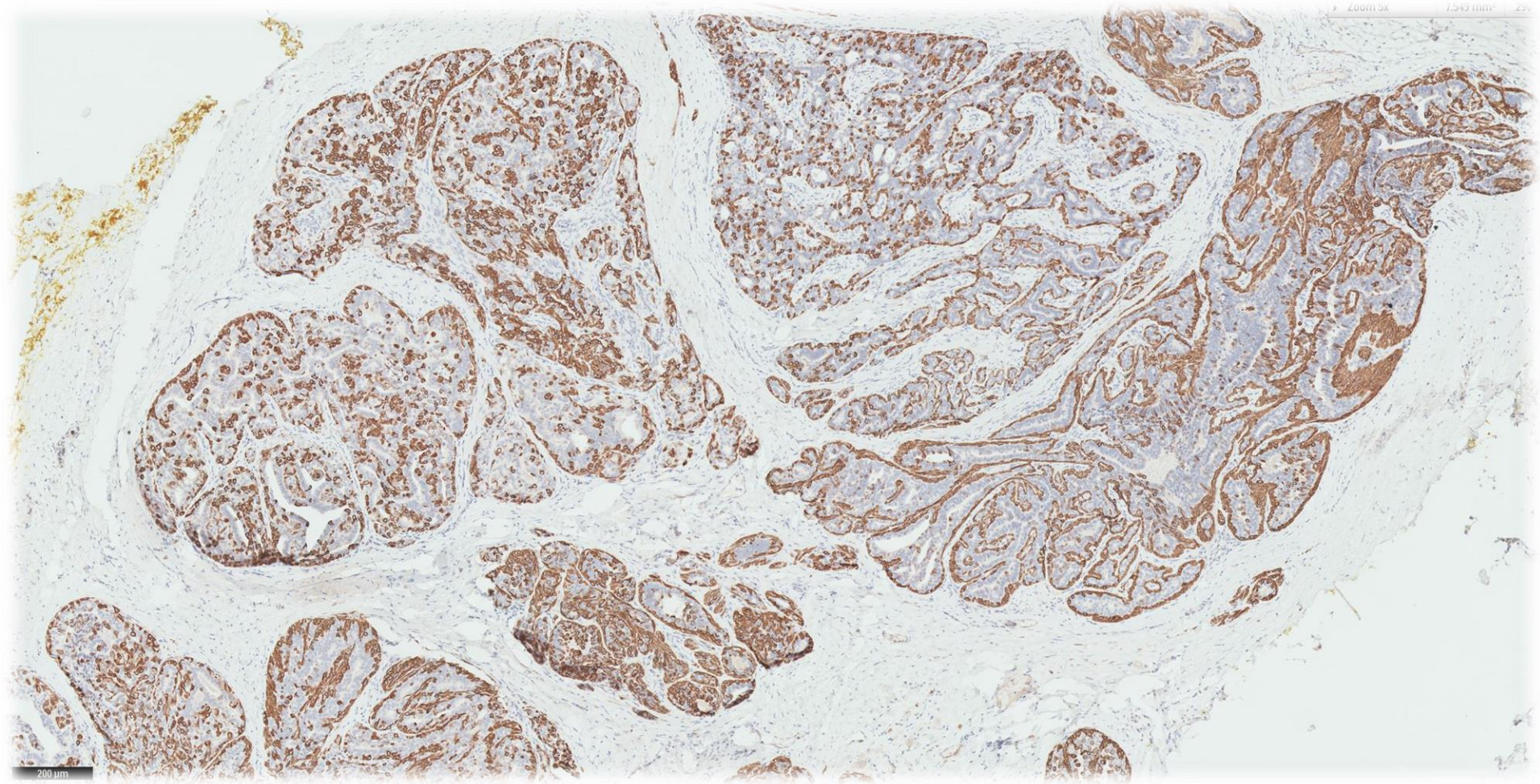






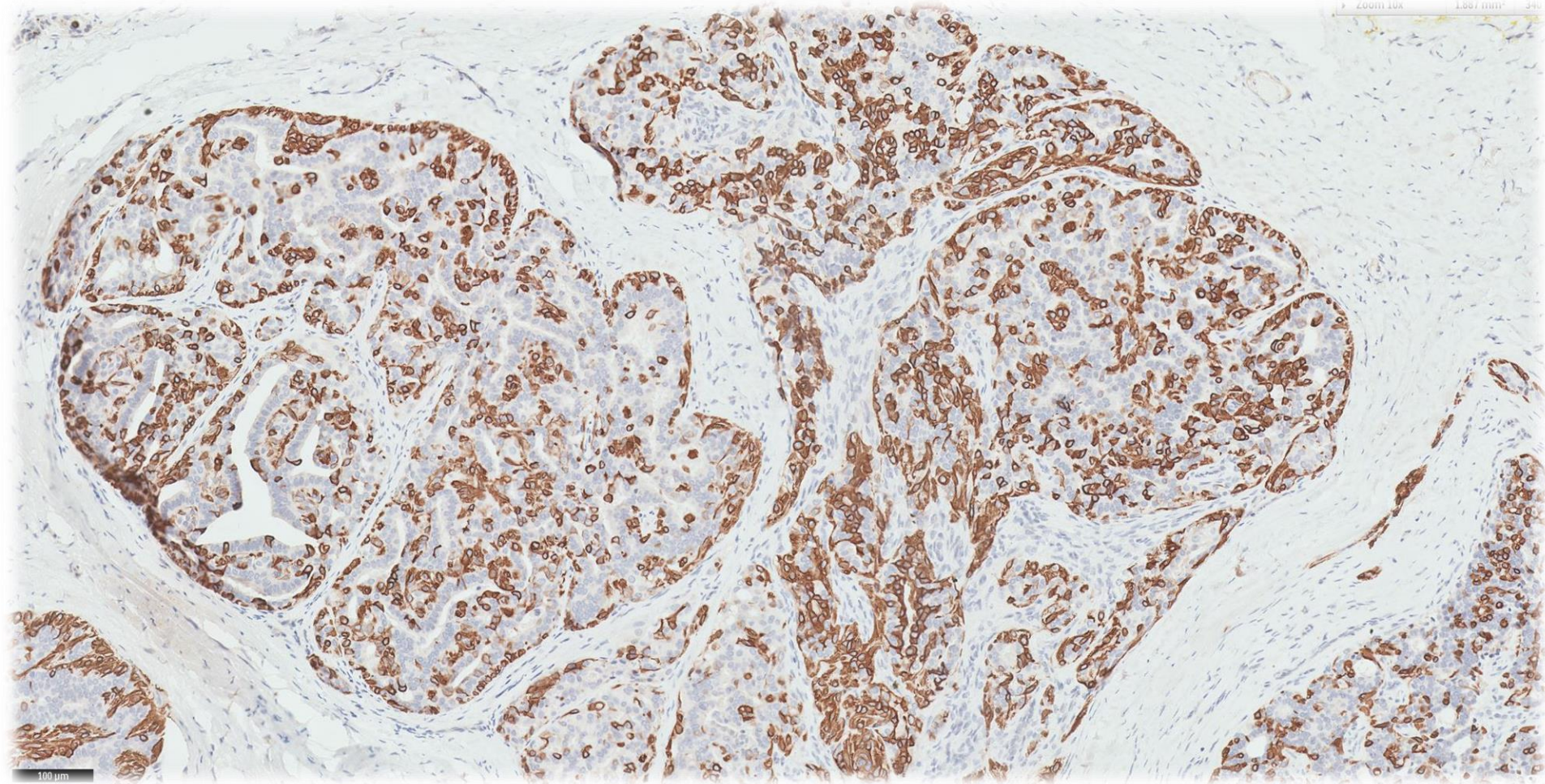


CK14



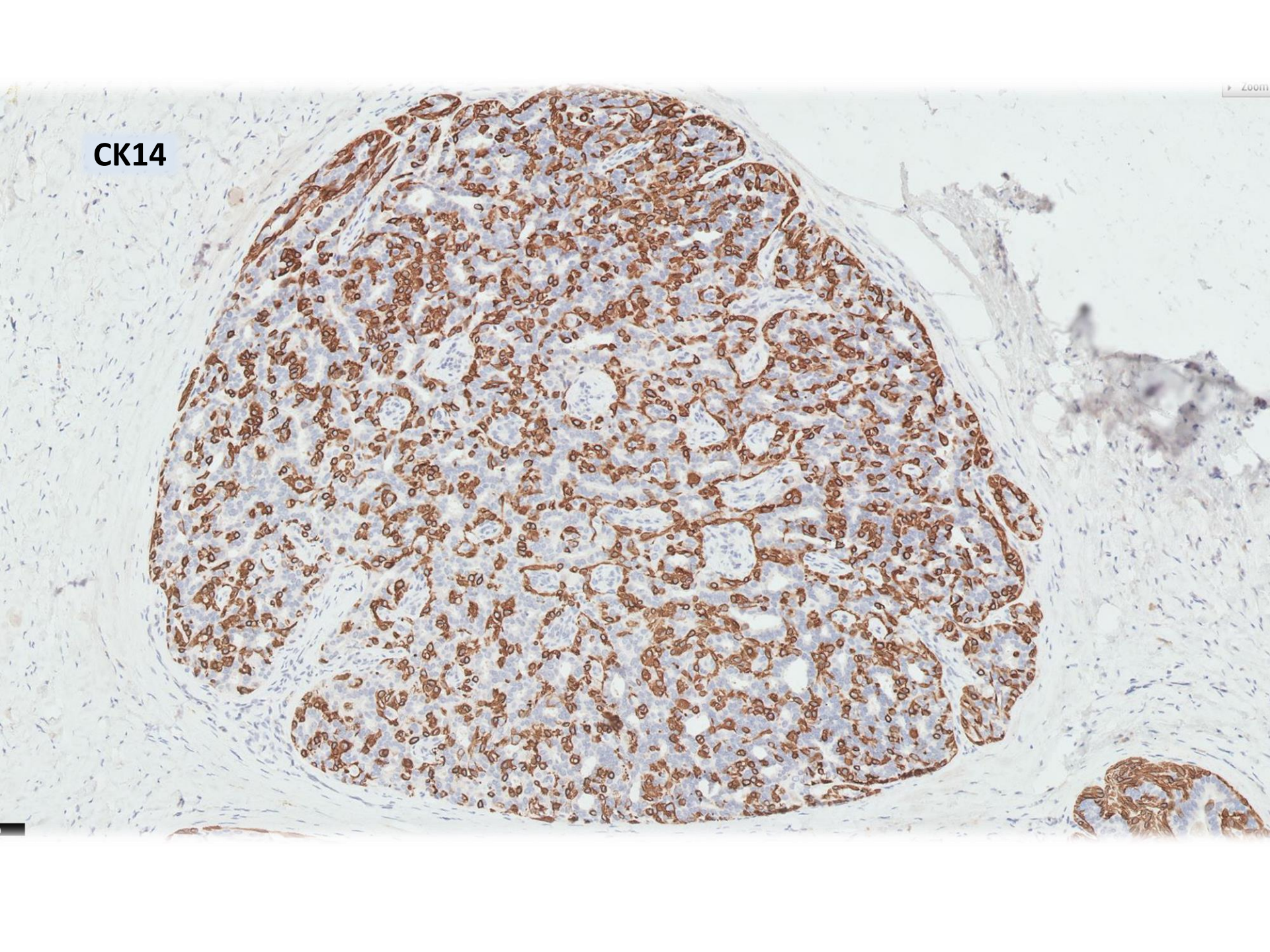
CK14

Zoom 10x 1.887 mm



100 μm

CK14



Diagnosis

- Extensively sclerosed intraductal papilloma with osteochondroid metaplasia and focal areas reminiscent of adenomyoepithelioma.



