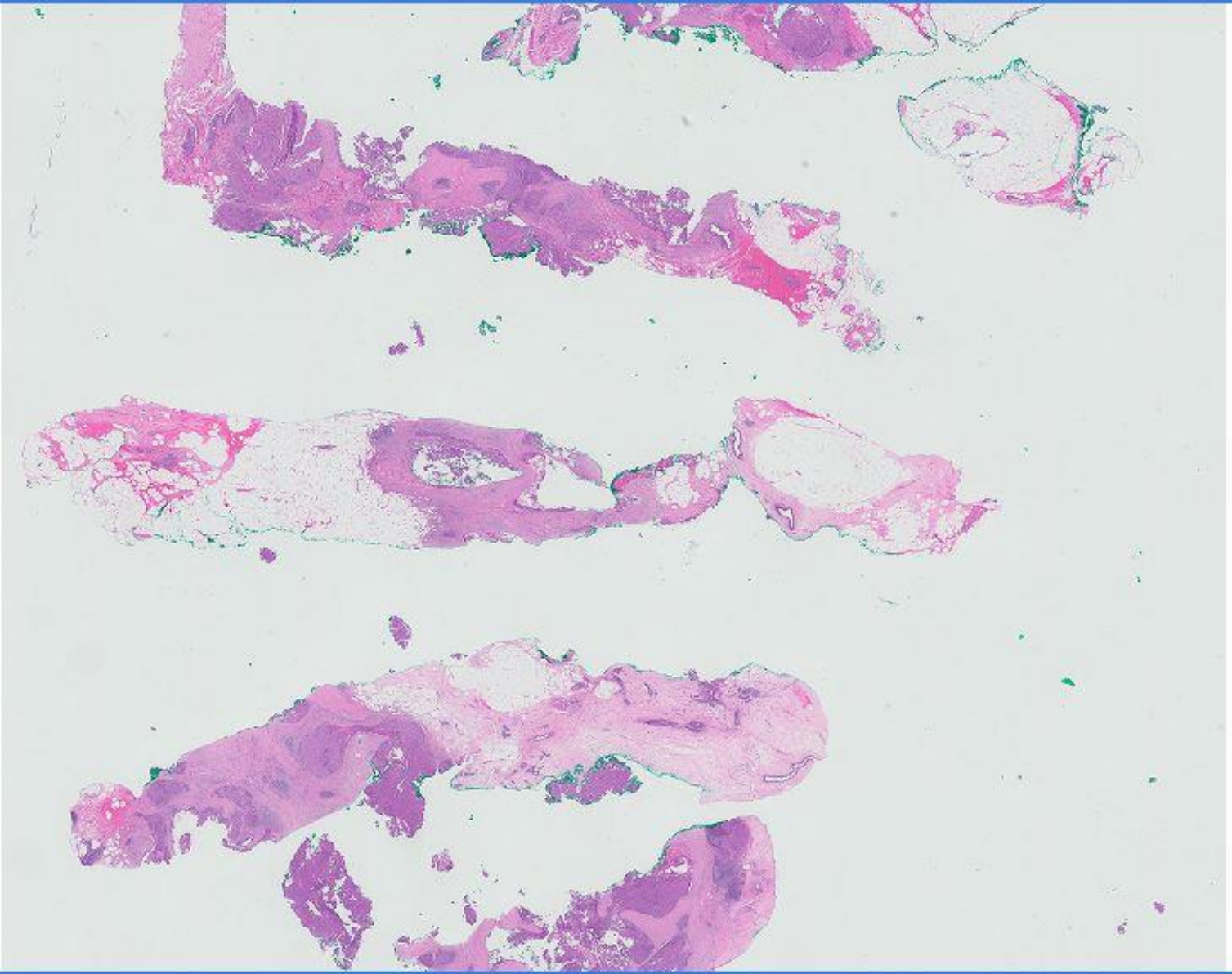


Case 47

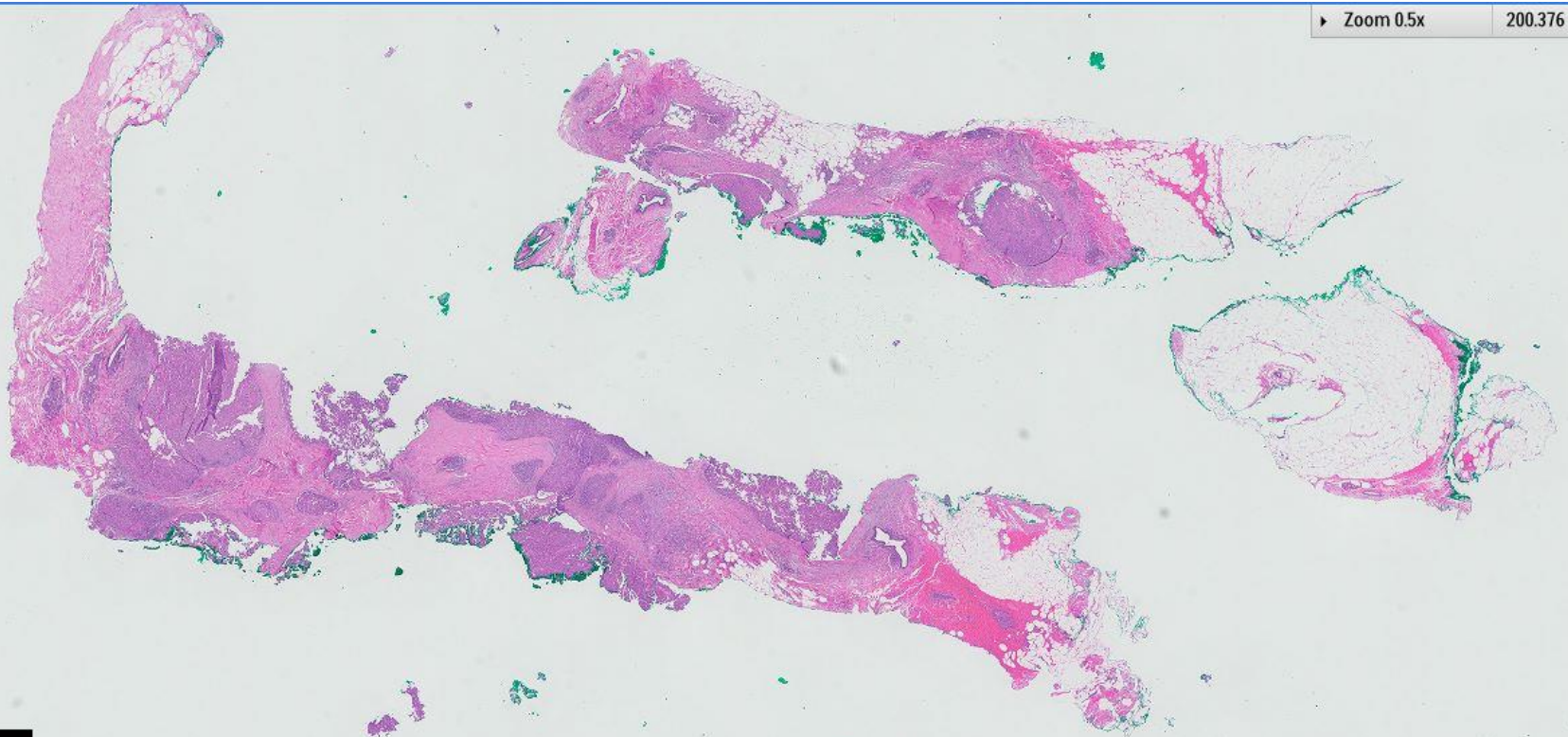
68 year old woman was discovered to have a right breast 0930 mass on mammographic screening.

An ultrasound guided vacuum assisted biopsy was performed.



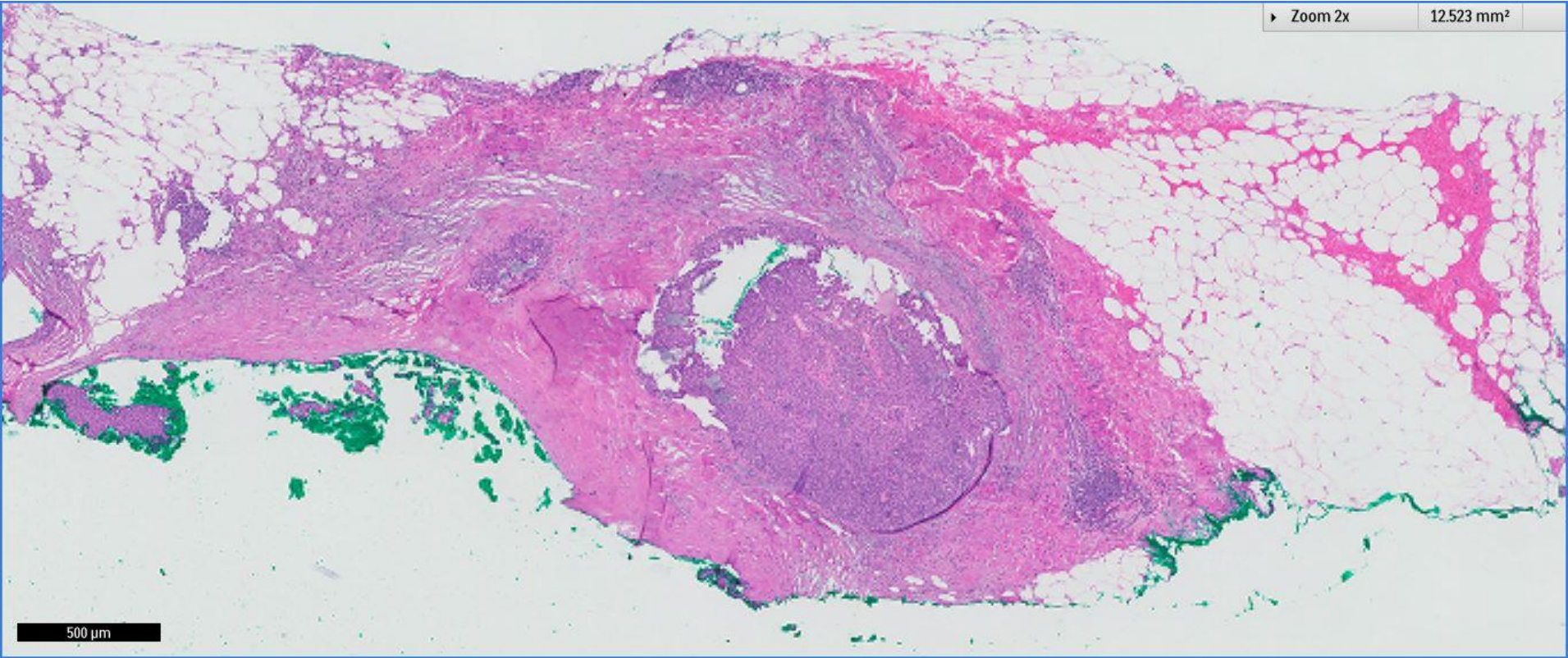


Zoom 0.5x 200.376 mm²



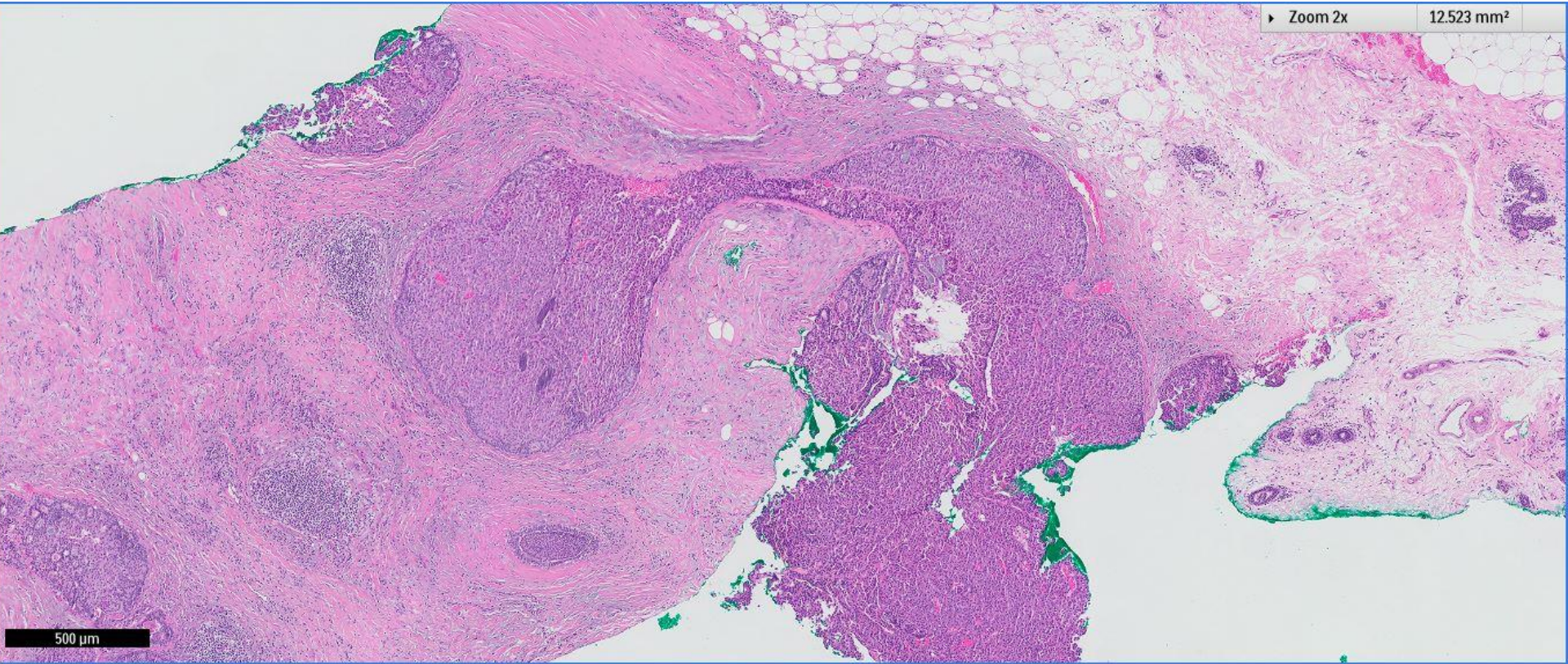
2 mm

► Zoom 2x 12.523 mm²



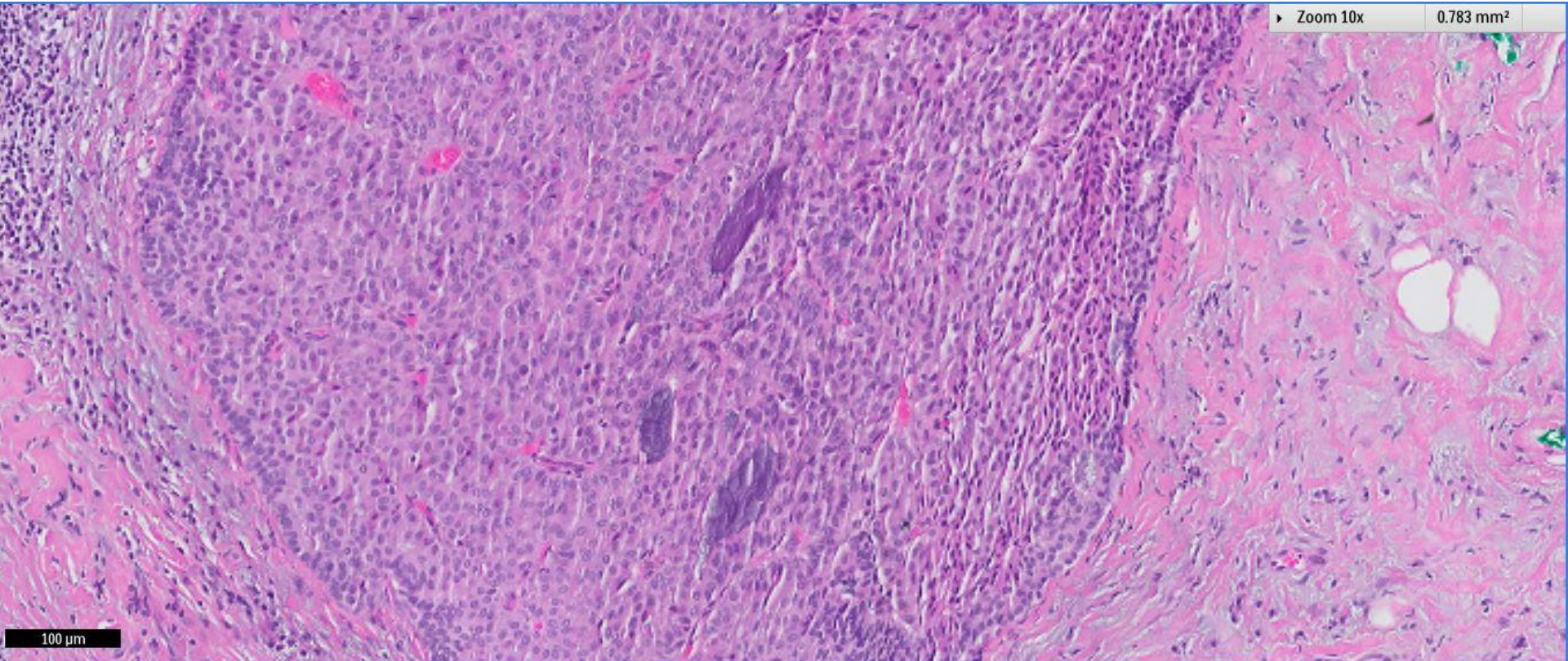
500 µm

Zoom 2x 12.523 mm²



500 μm

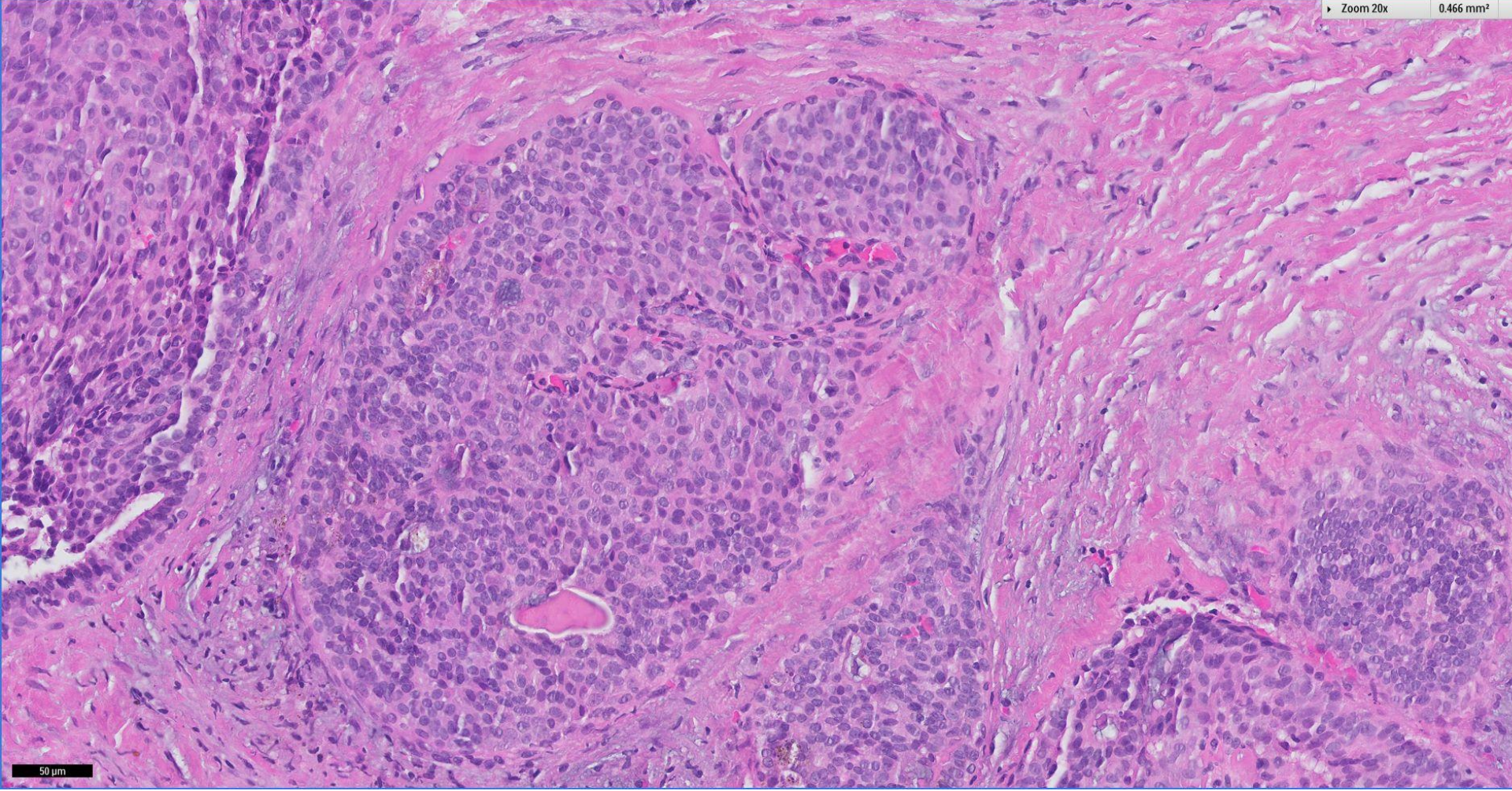
▶ Zoom 10x 0.783 mm²



100 μm



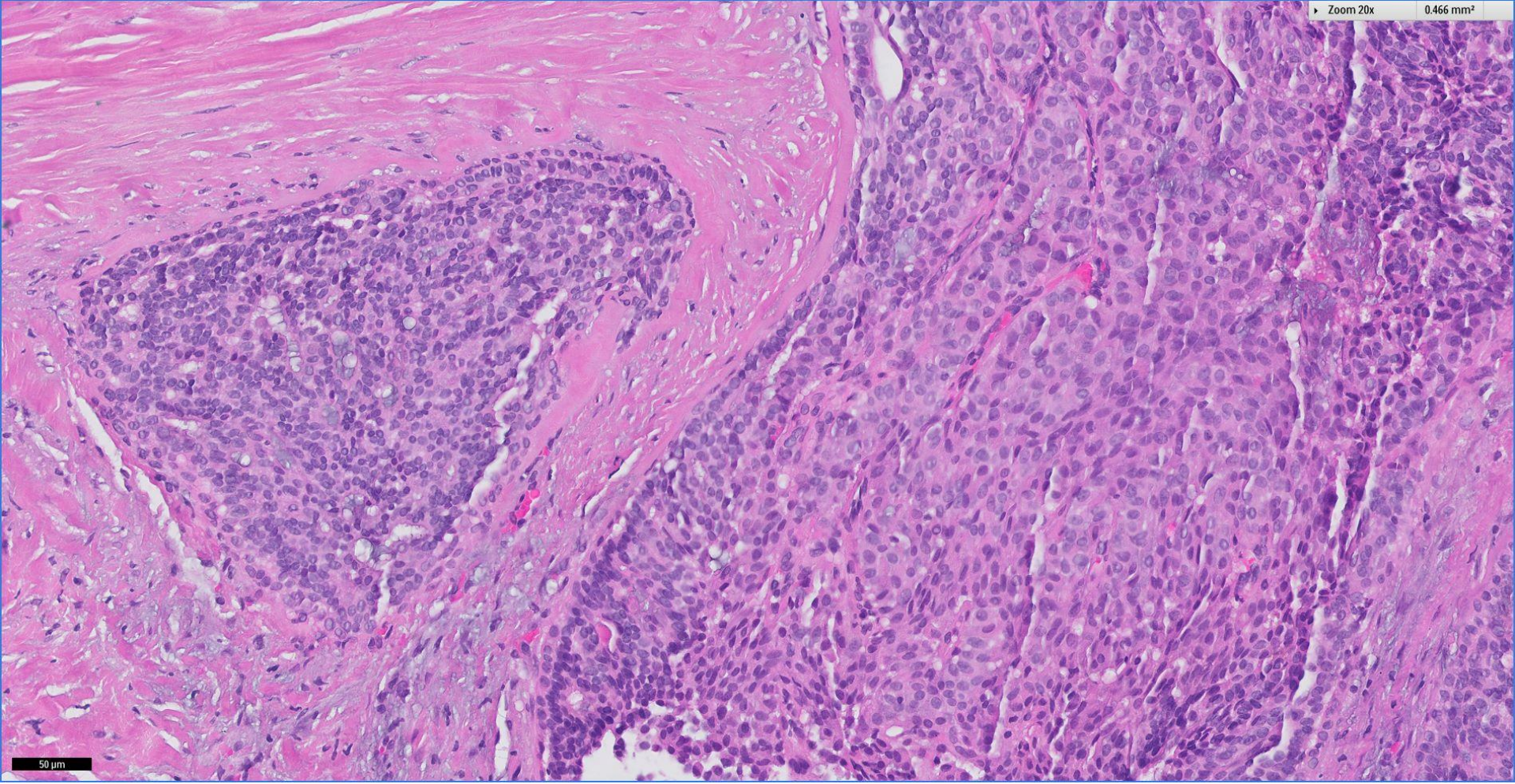
Zoom 20x 0.466 mm²



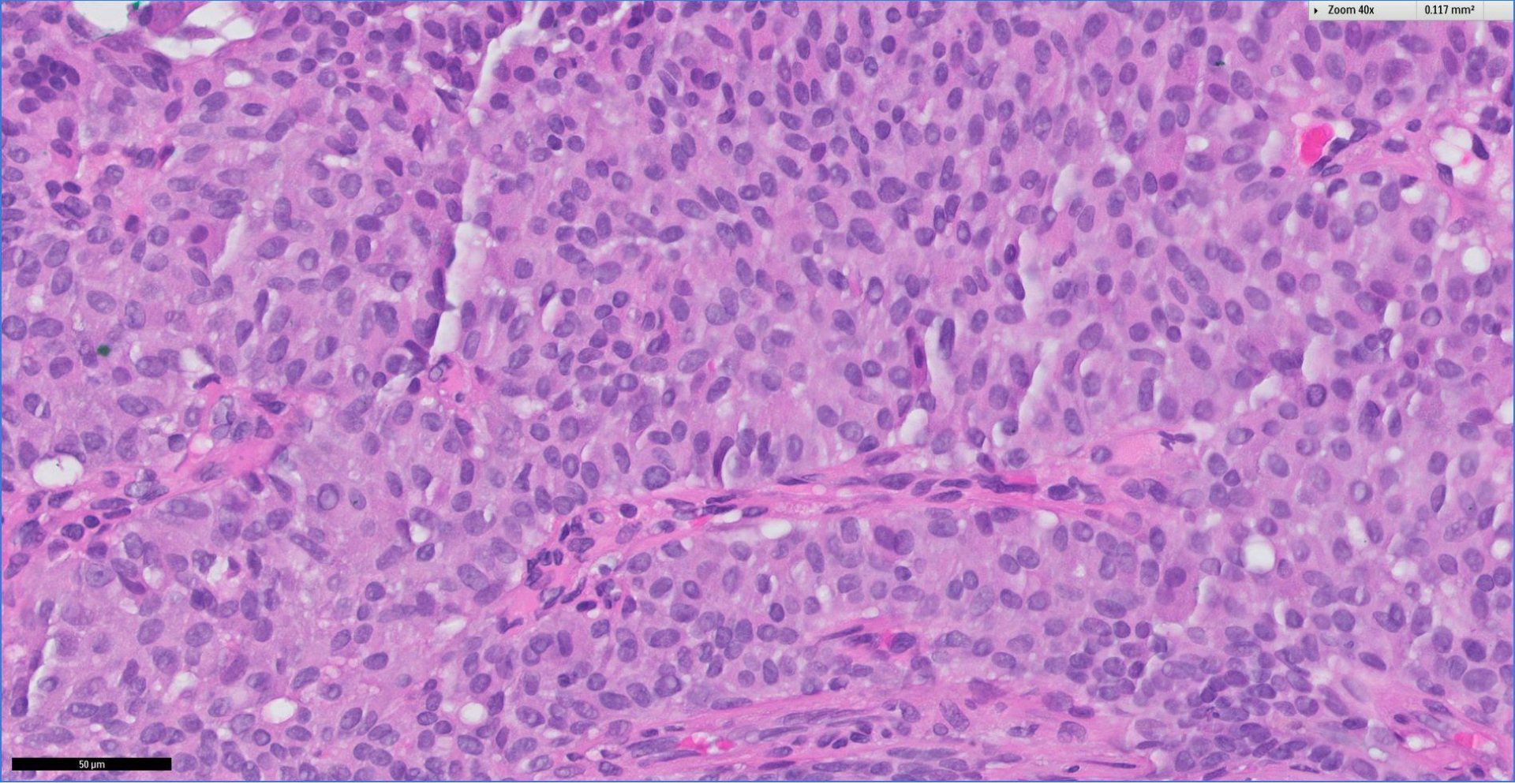
50 μm

Zoom 20x

0.466 mm²

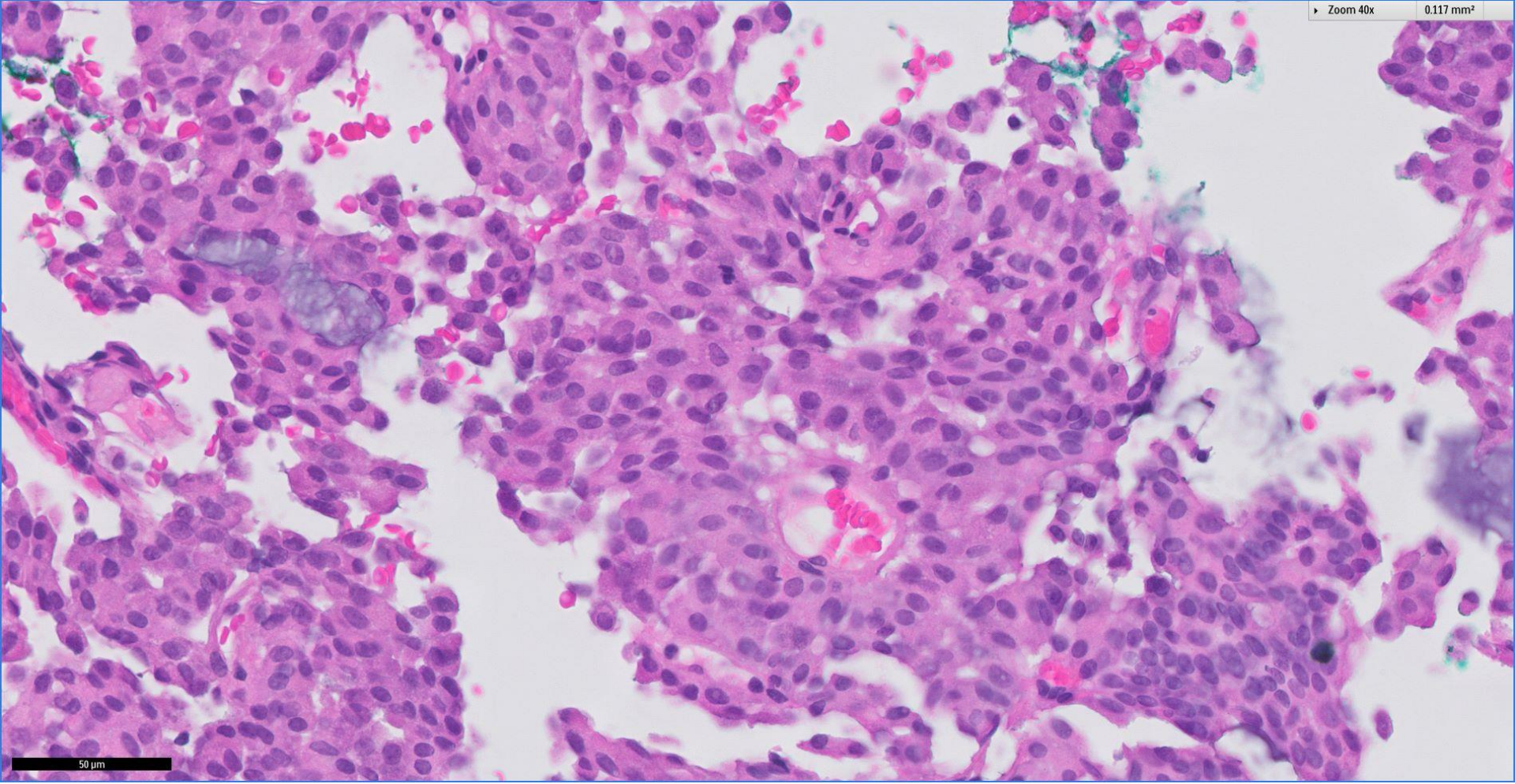


50 μm



Zoom 40x

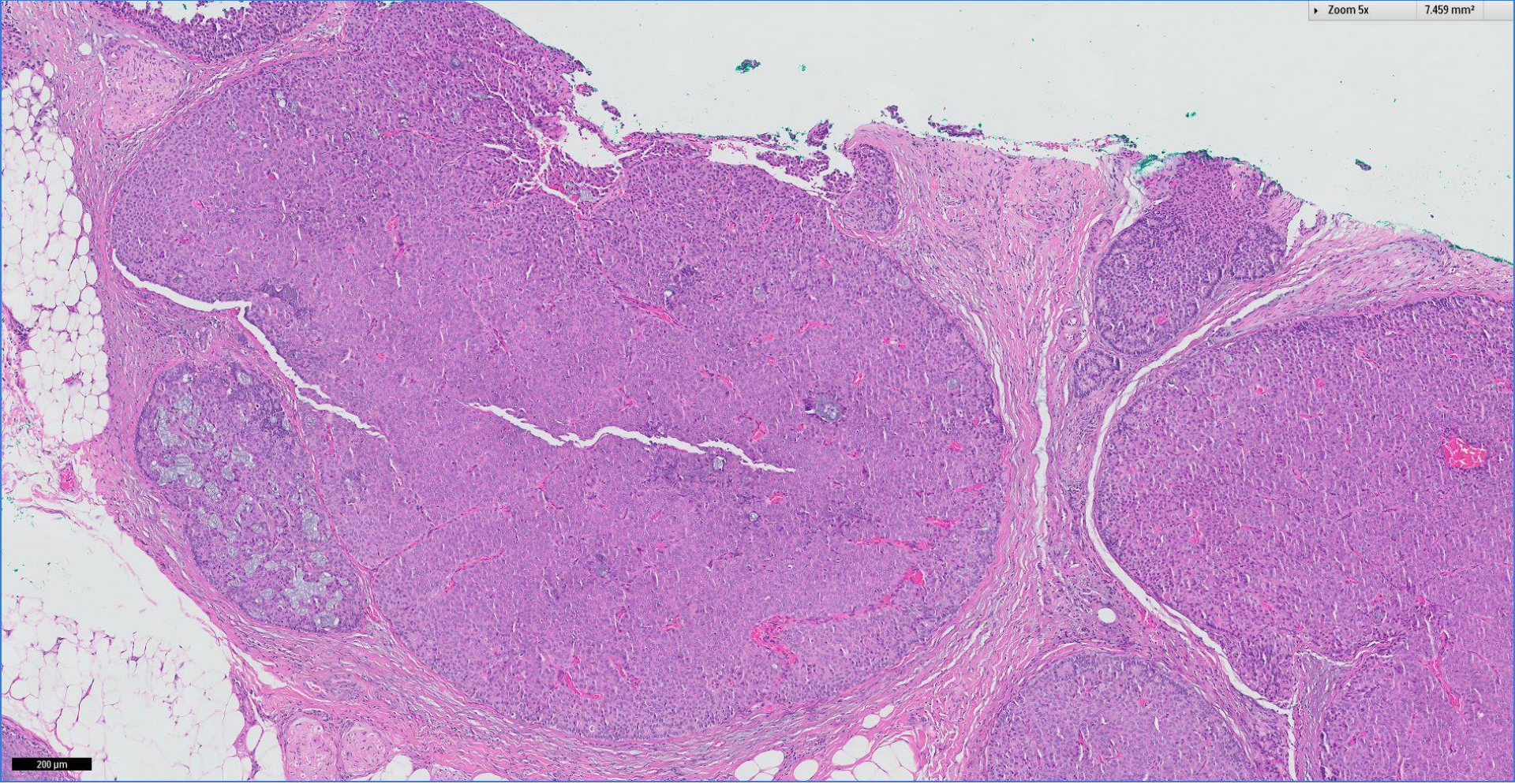
0.117 mm²



50 μm

Zoom 5x

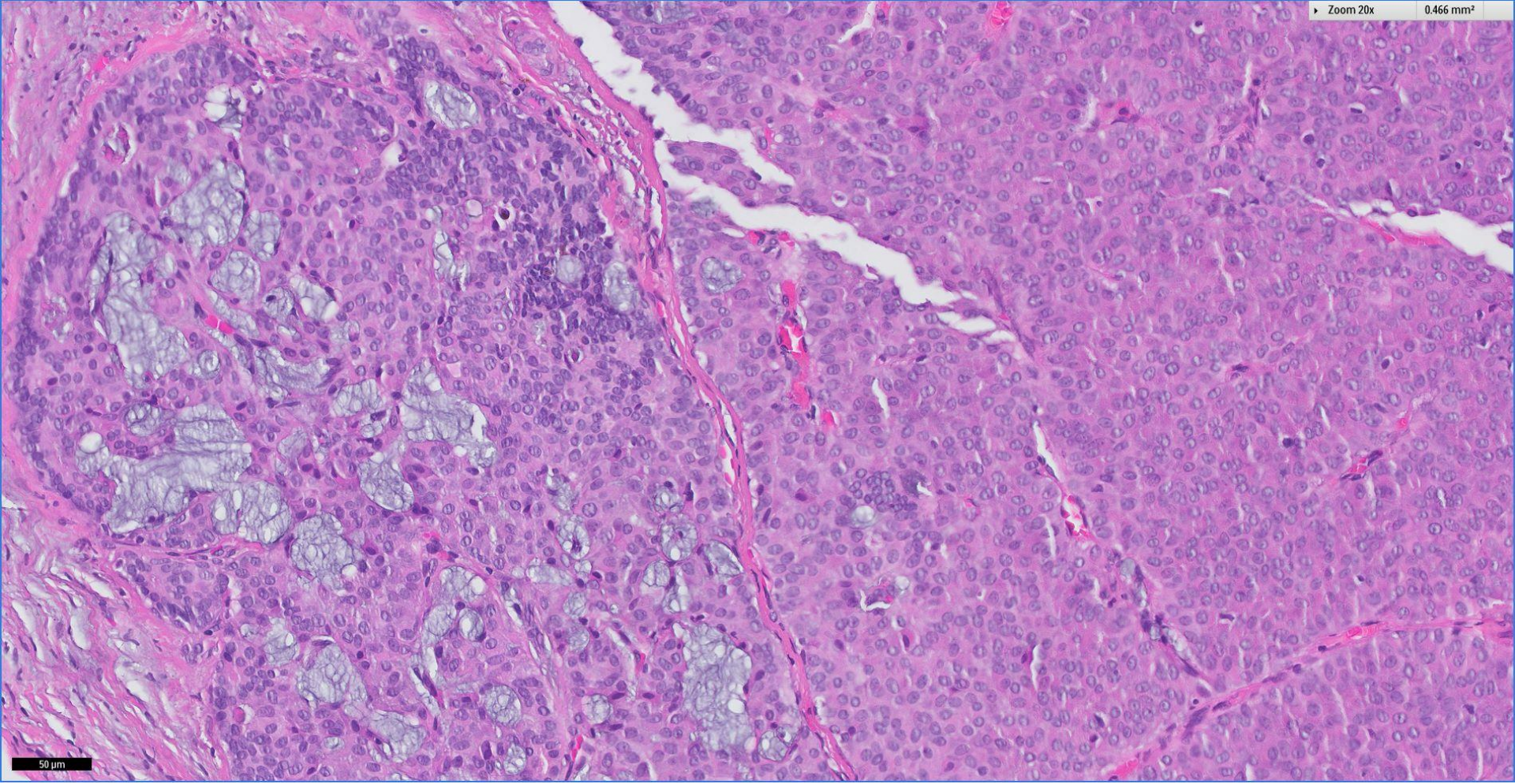
7.459 mm²



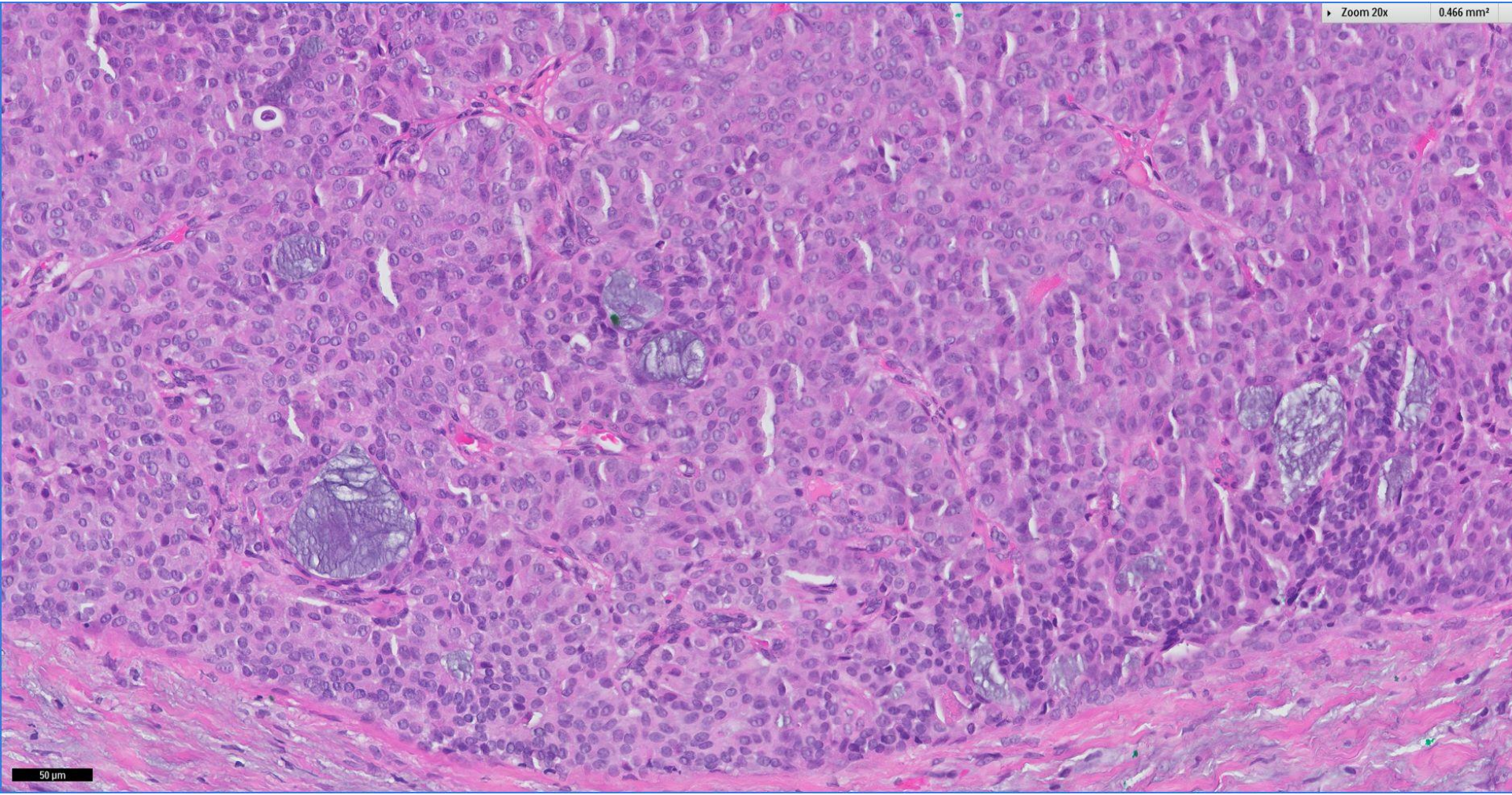
200 μm

Zoom 20x

0.466 mm²

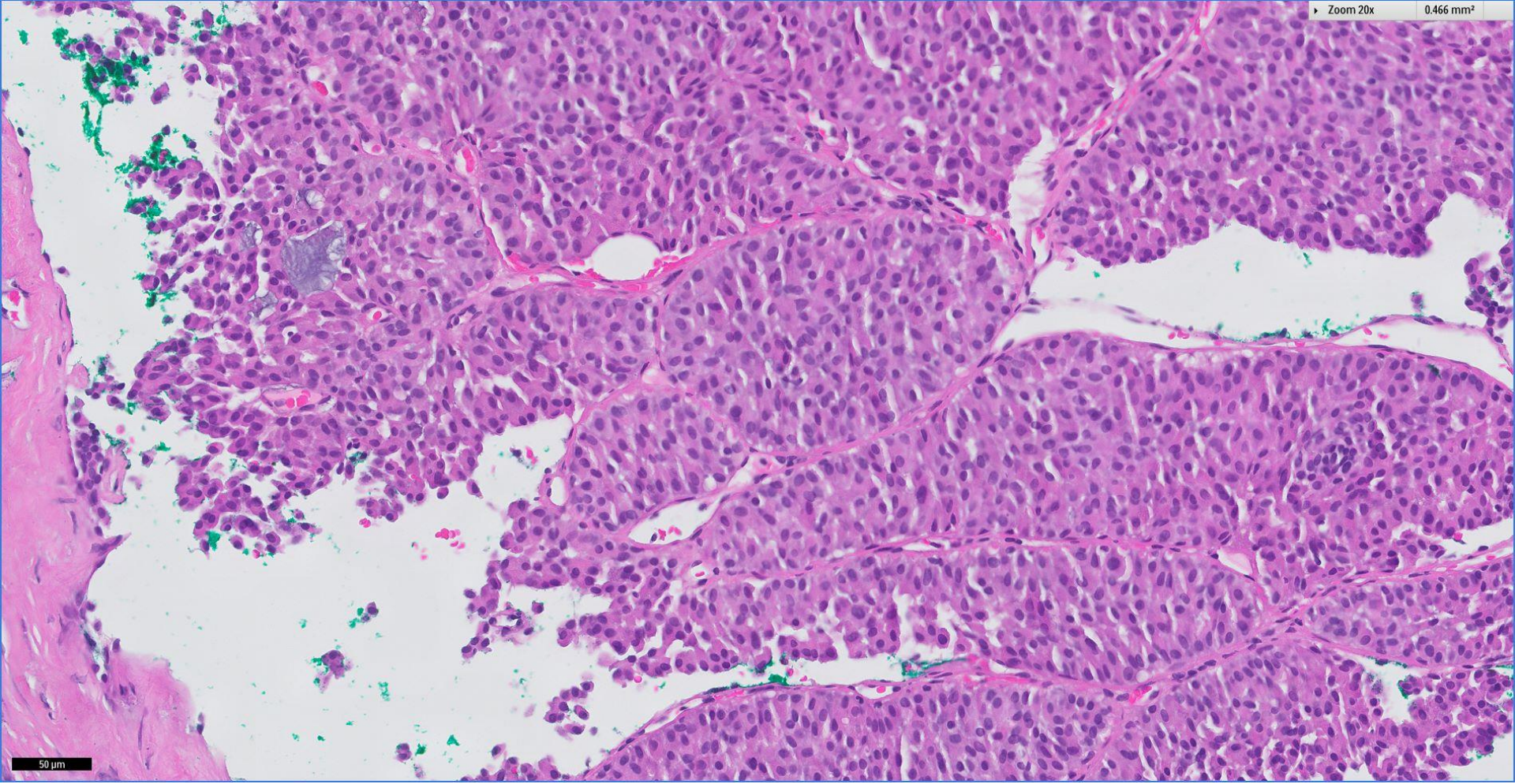


50 μm

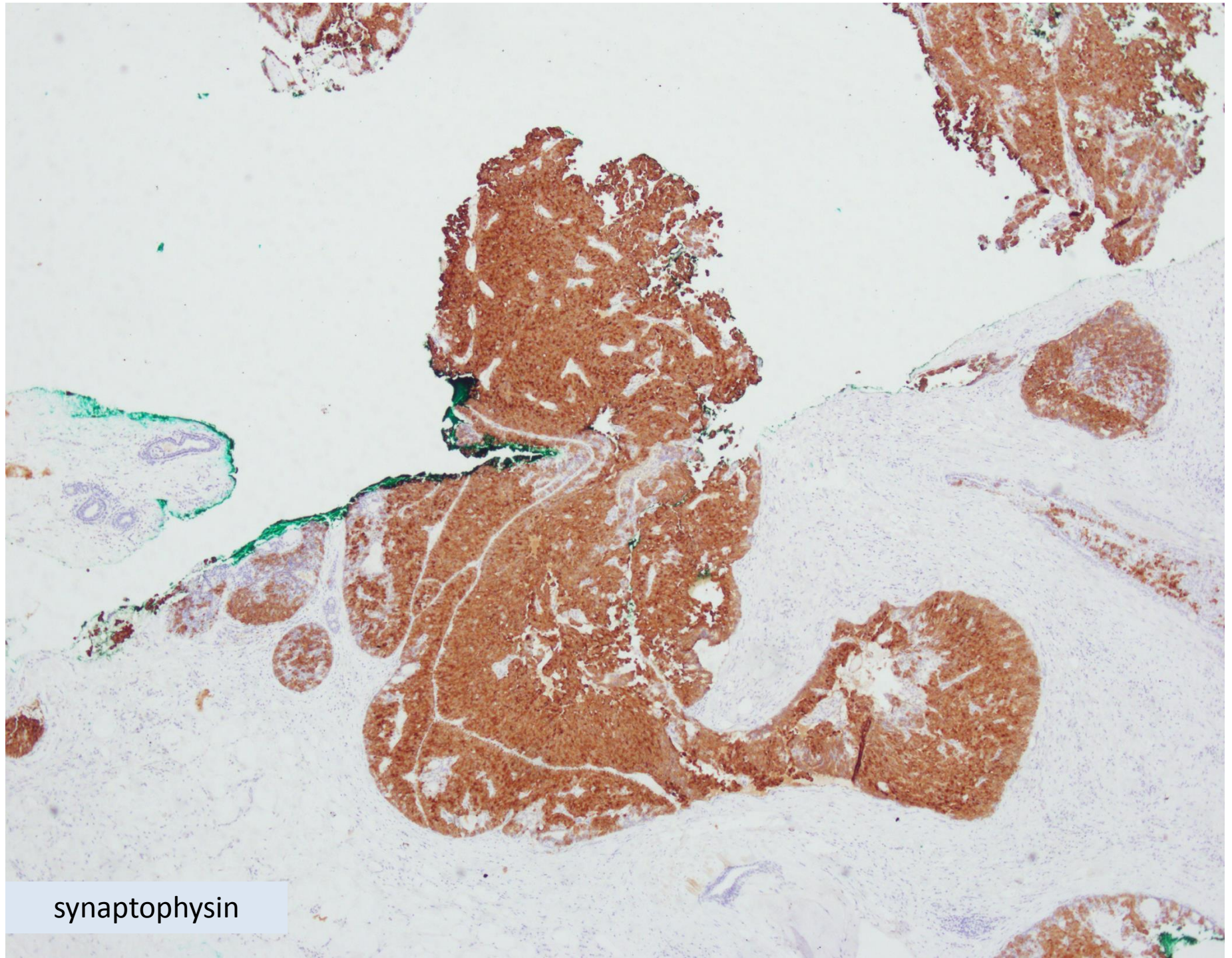


Zoom 20x

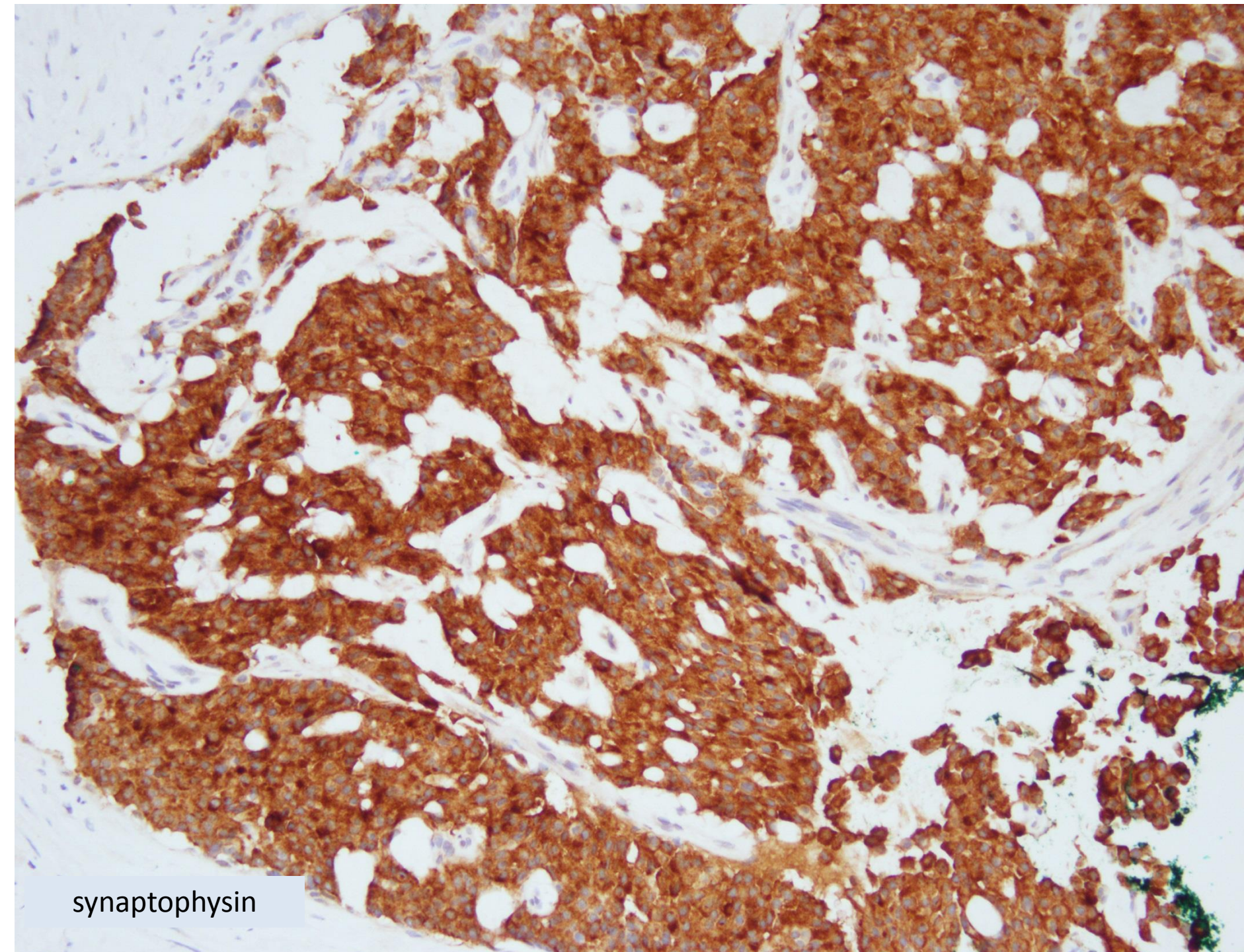
0.466 mm²



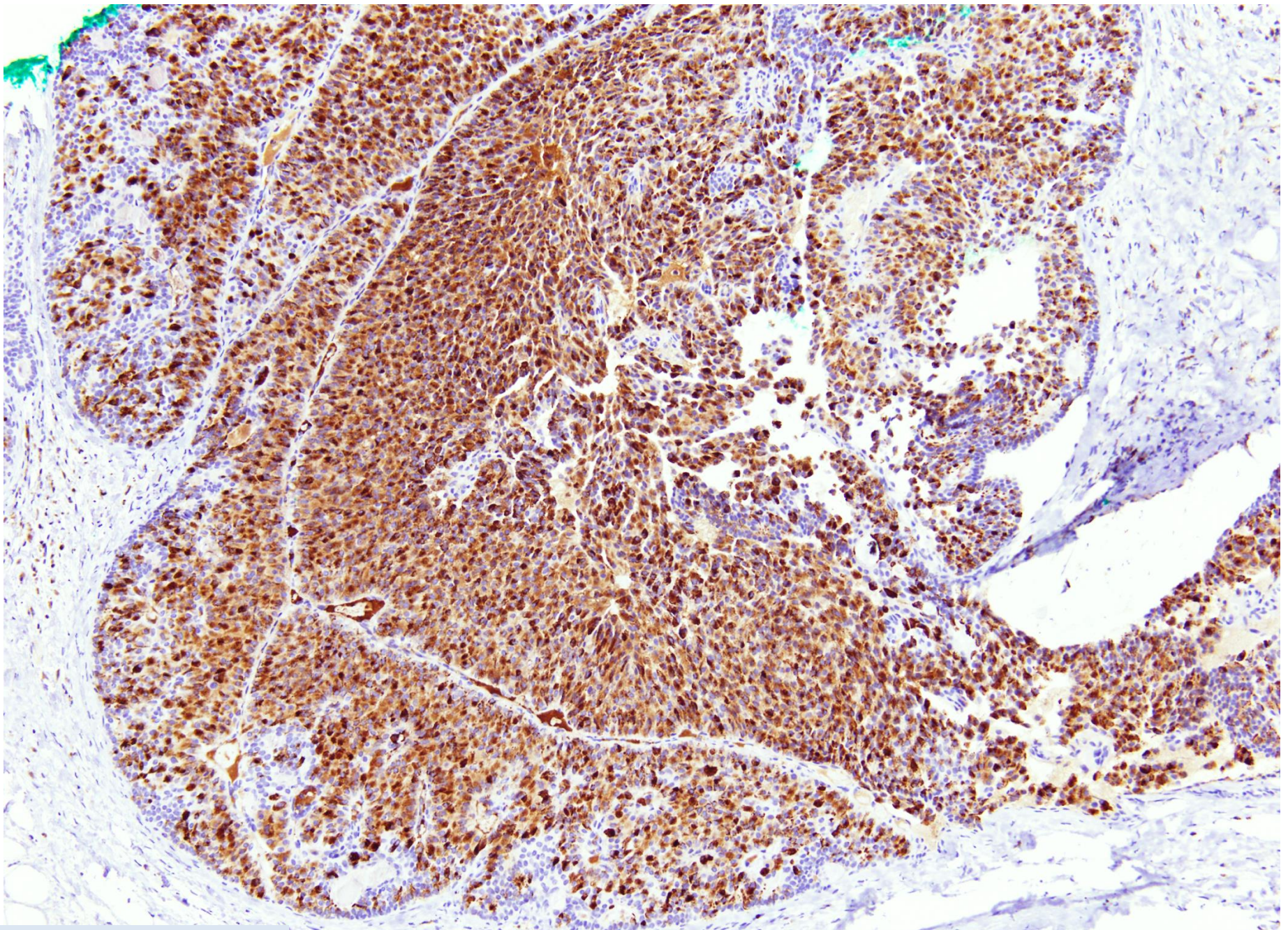
50 μm



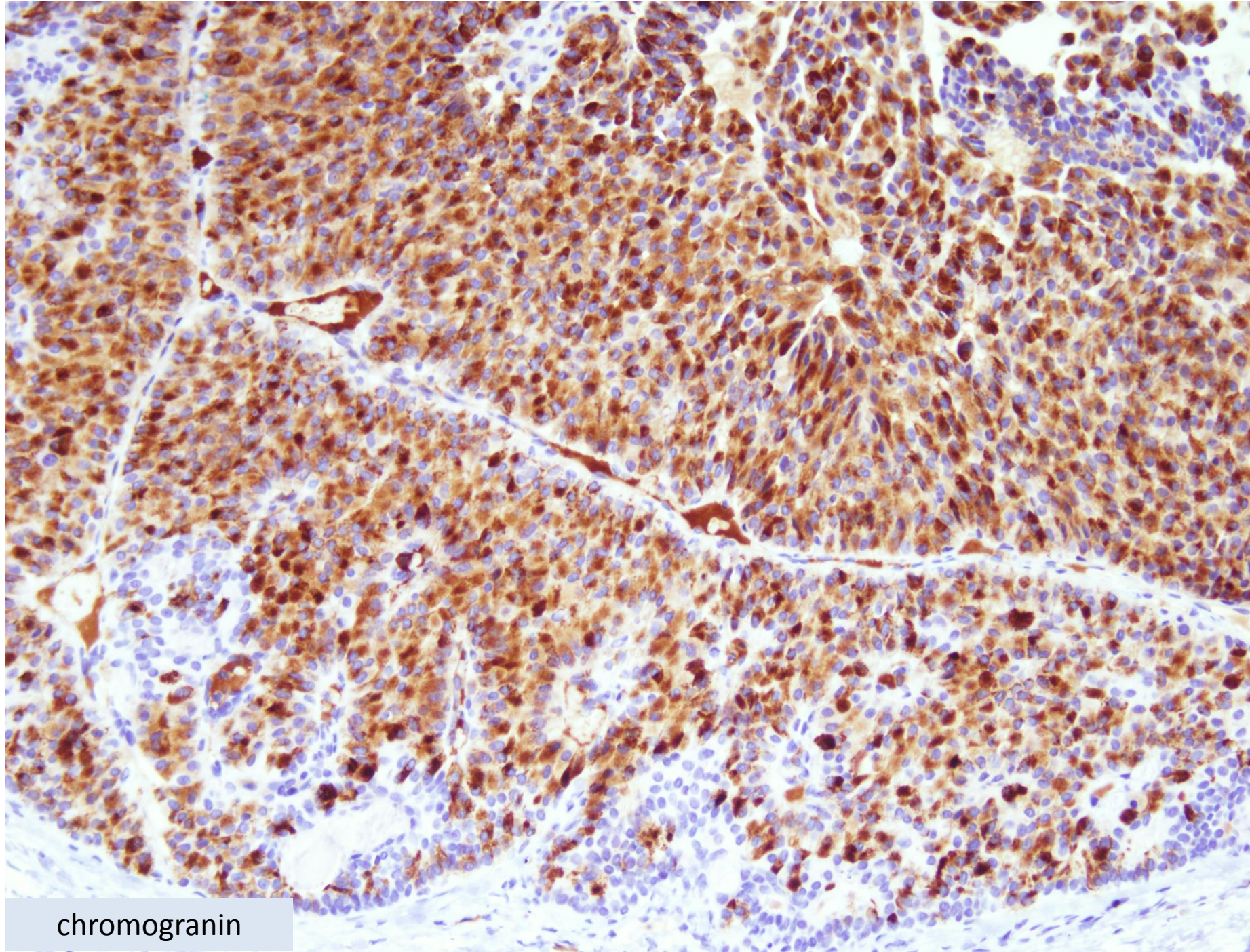
synaptophysin



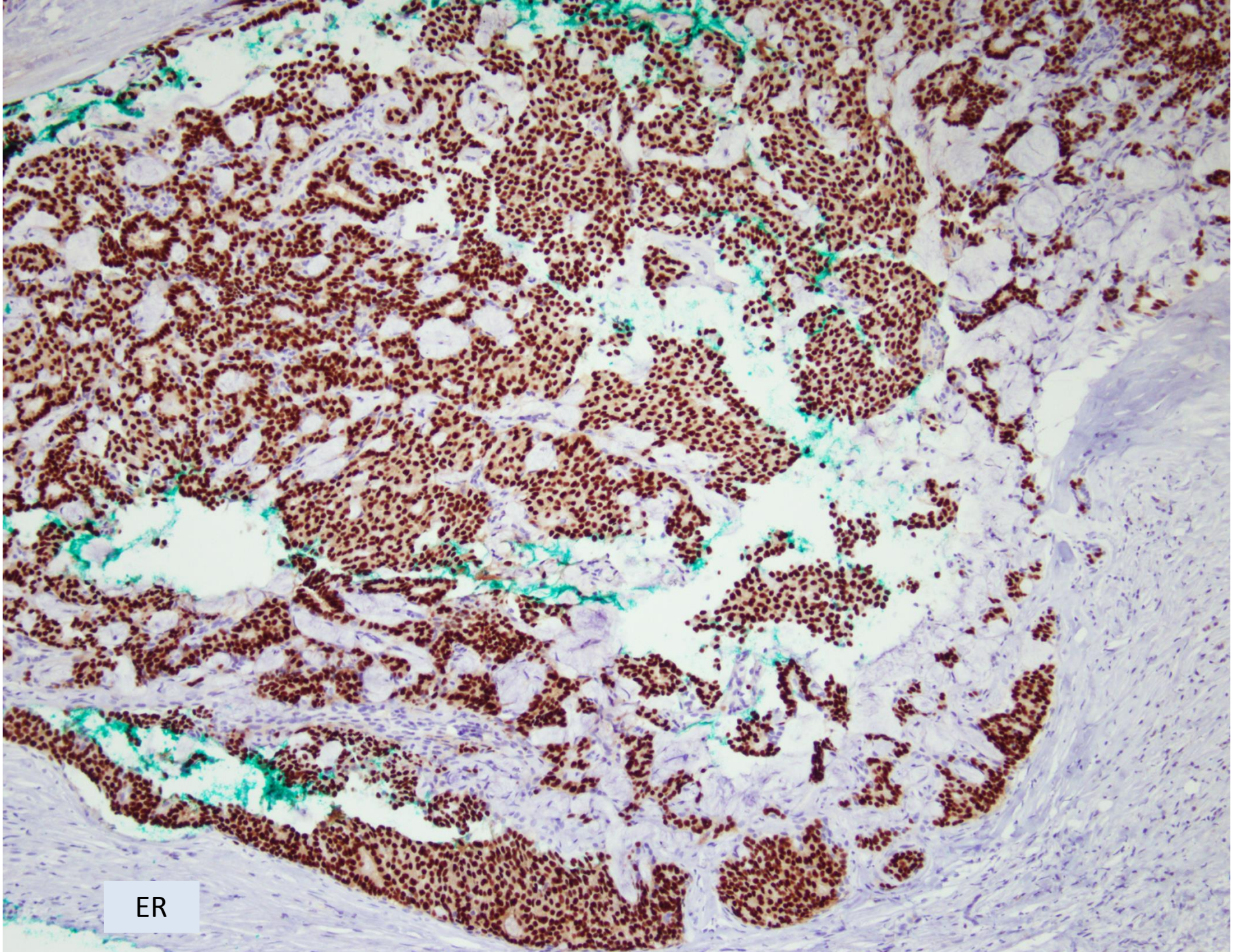
synaptophysin



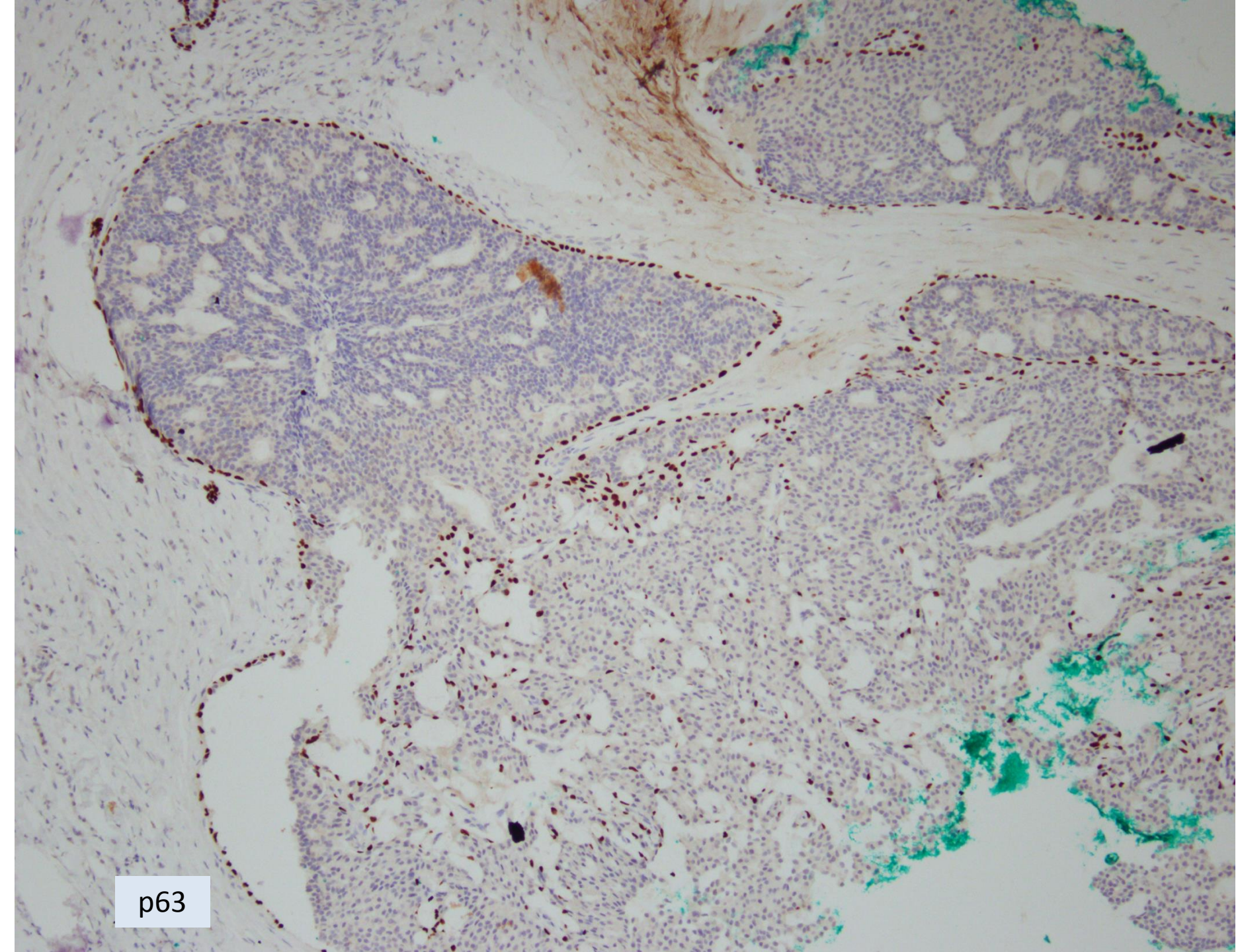
chromogranin



chromogranin



ER



p63



p63



p63

Ultrasound guided VAB, right breast 0930:

Ductal carcinoma in situ, solid-papillary and cribriform, low nuclear grade, without necrosis, with neuroendocrine differentiation



 Breast
Pathology
Course 2014

