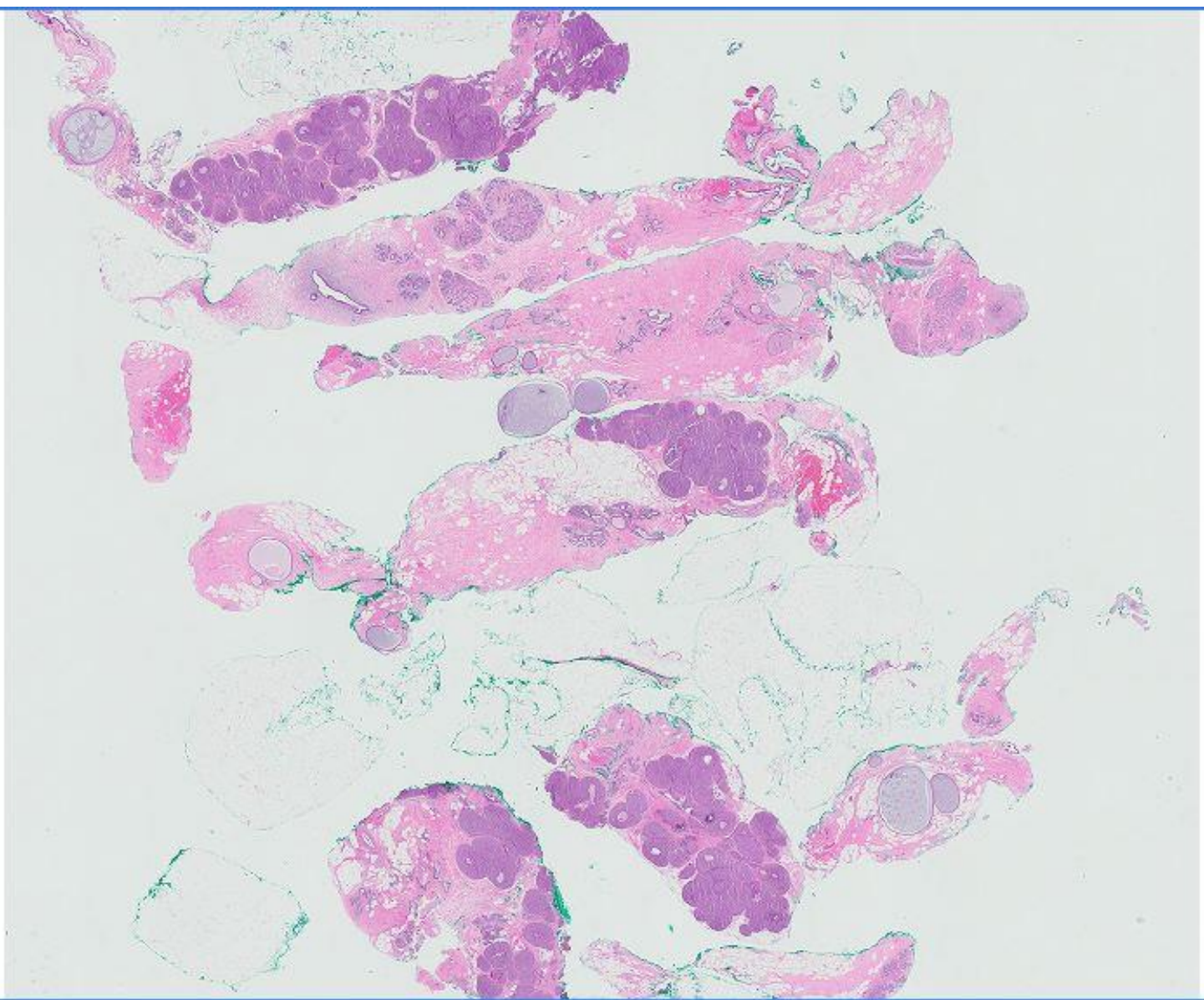


Case 46

45 year old woman participated in BreastScreen Singapore.

Stereotactic mammotome biopsies were performed for radiologically detected right breast calcifications.



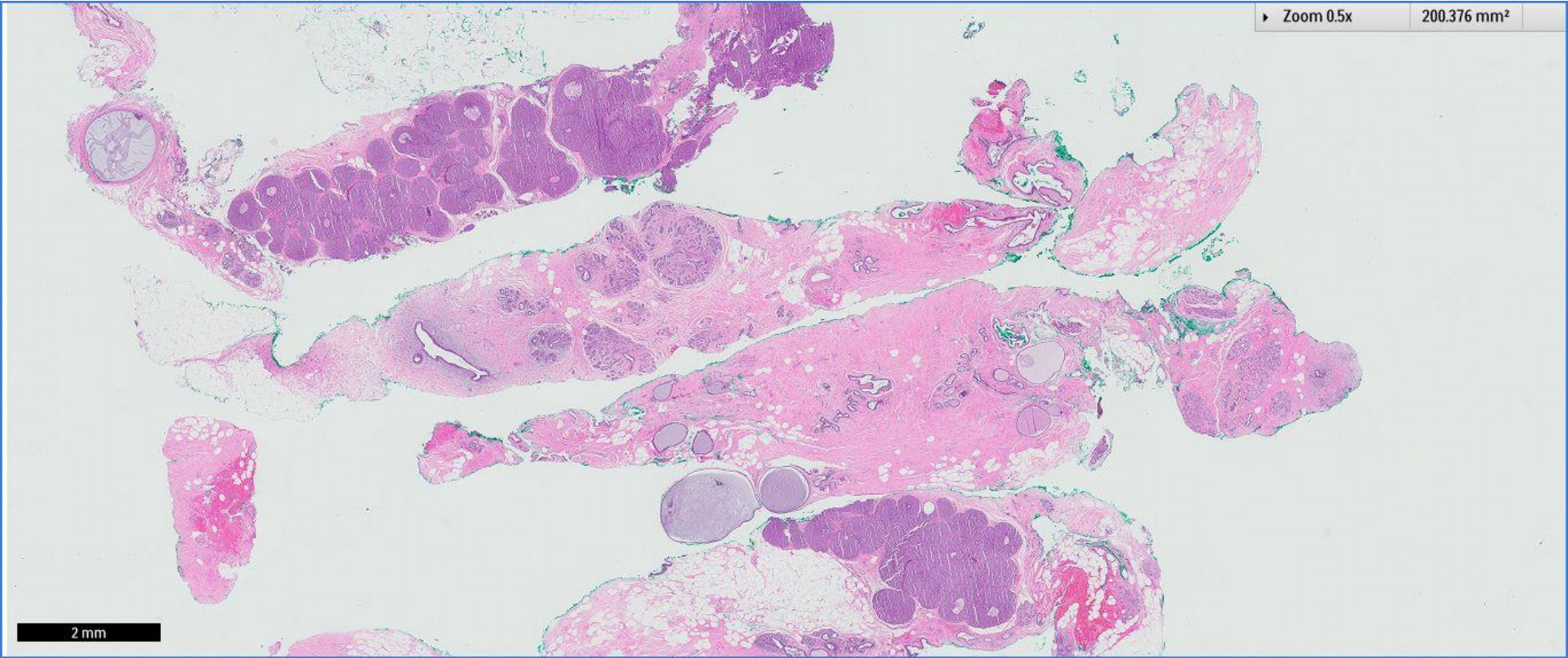


mm

▶ Zoom 0.5x

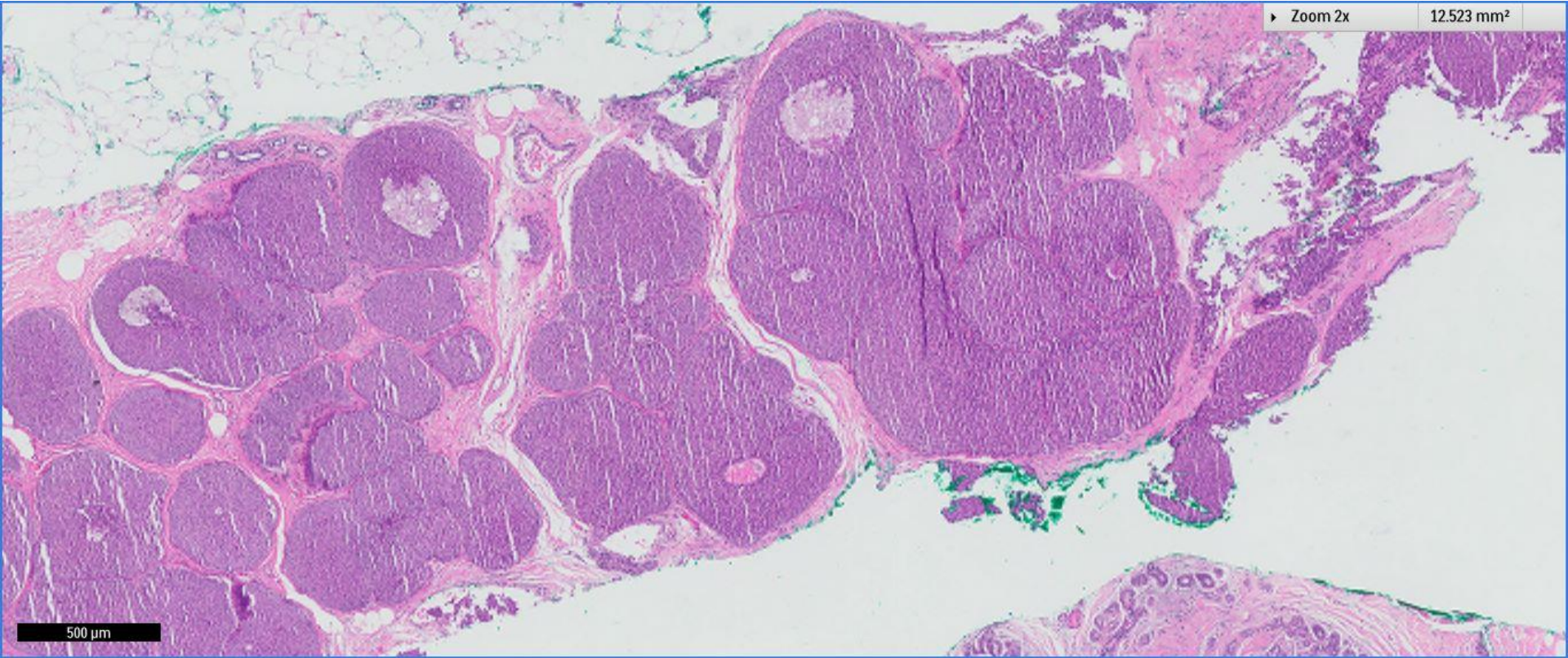
200.376 mm²

2 mm

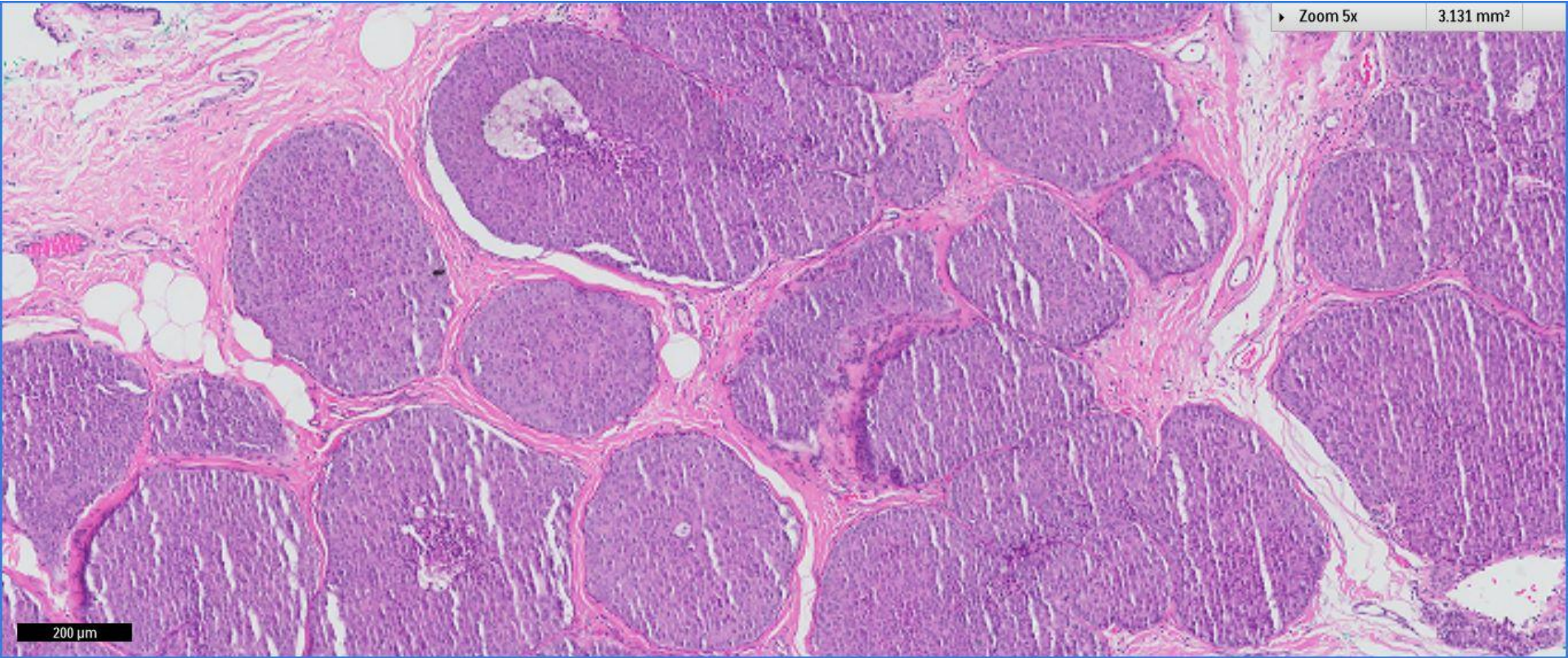


▶ Zoom 2x

12.523 mm²



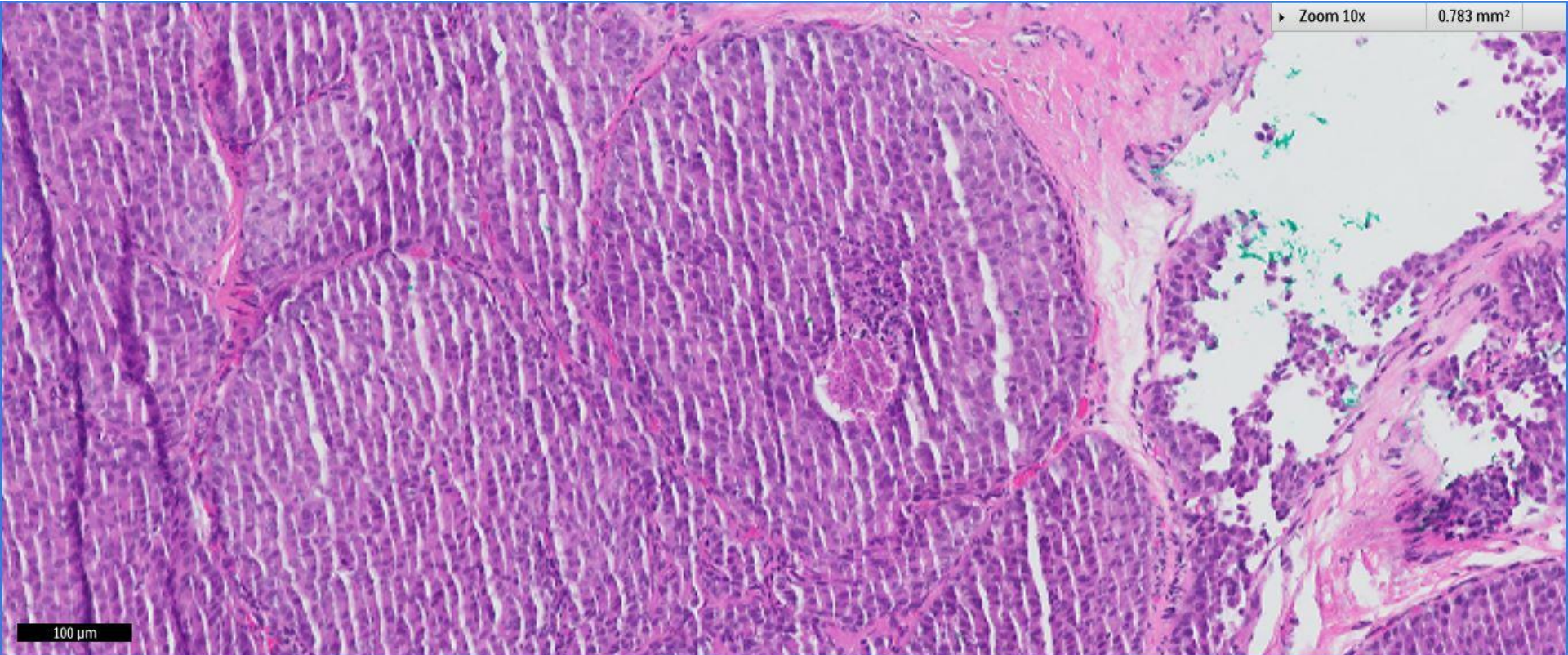
500 μm



Zoom 5x

3.131 mm²

200 μm



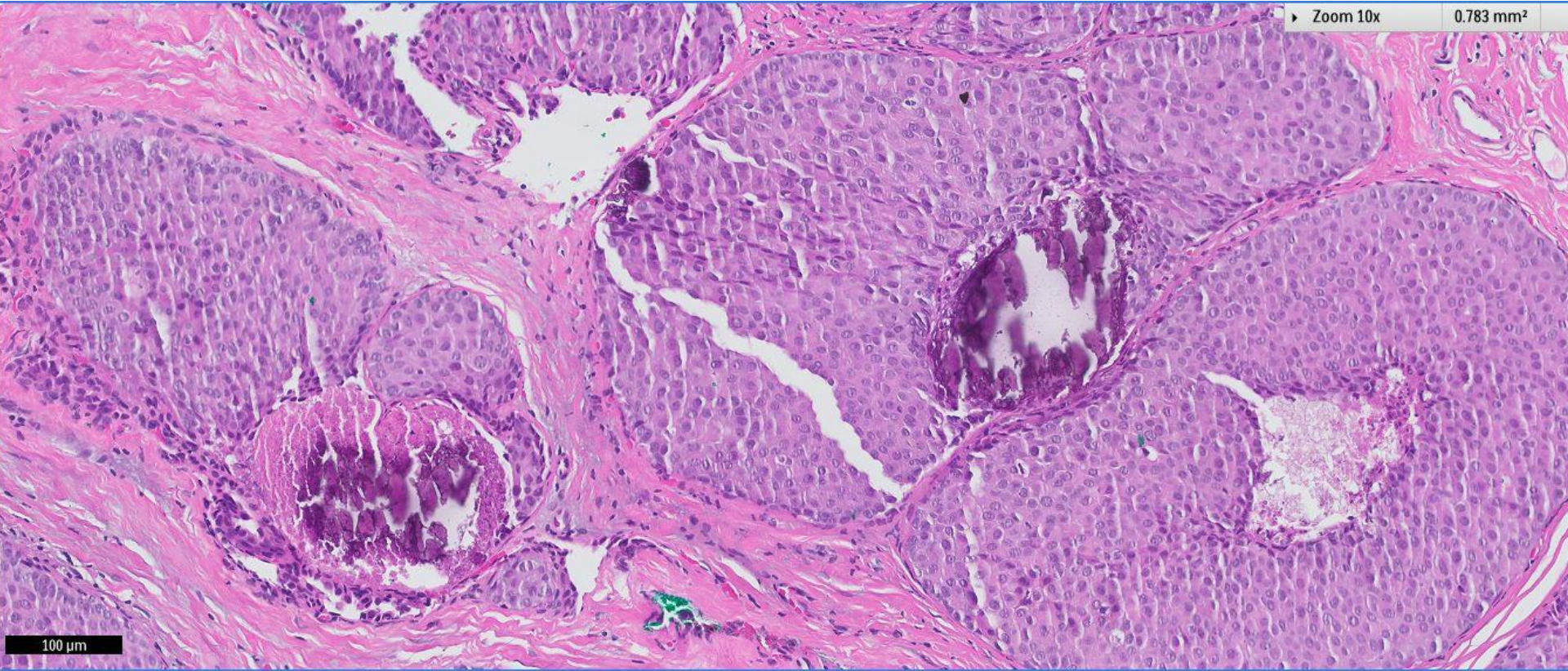
Zoom 10x

0.783 mm²

100 μm



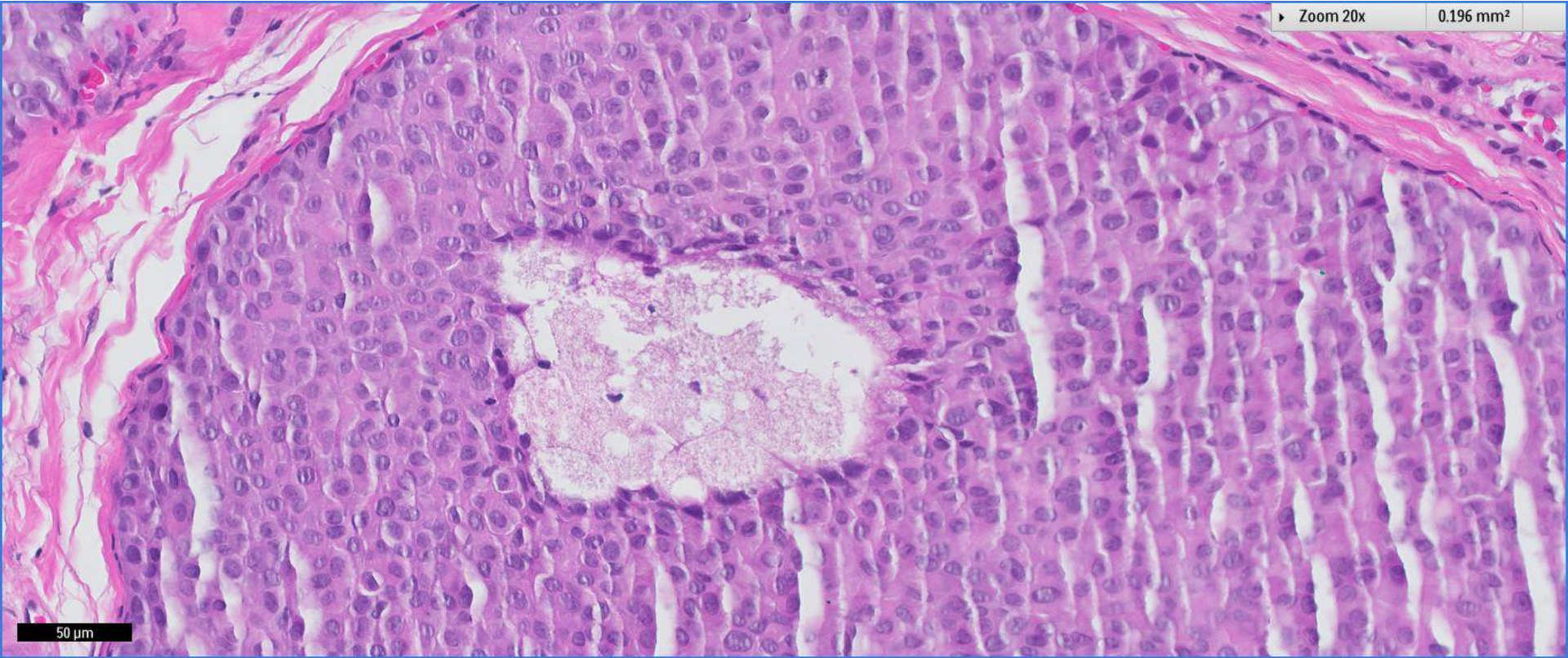
► Zoom 10x 0.783 mm²



100 μ m

▶ Zoom 20x

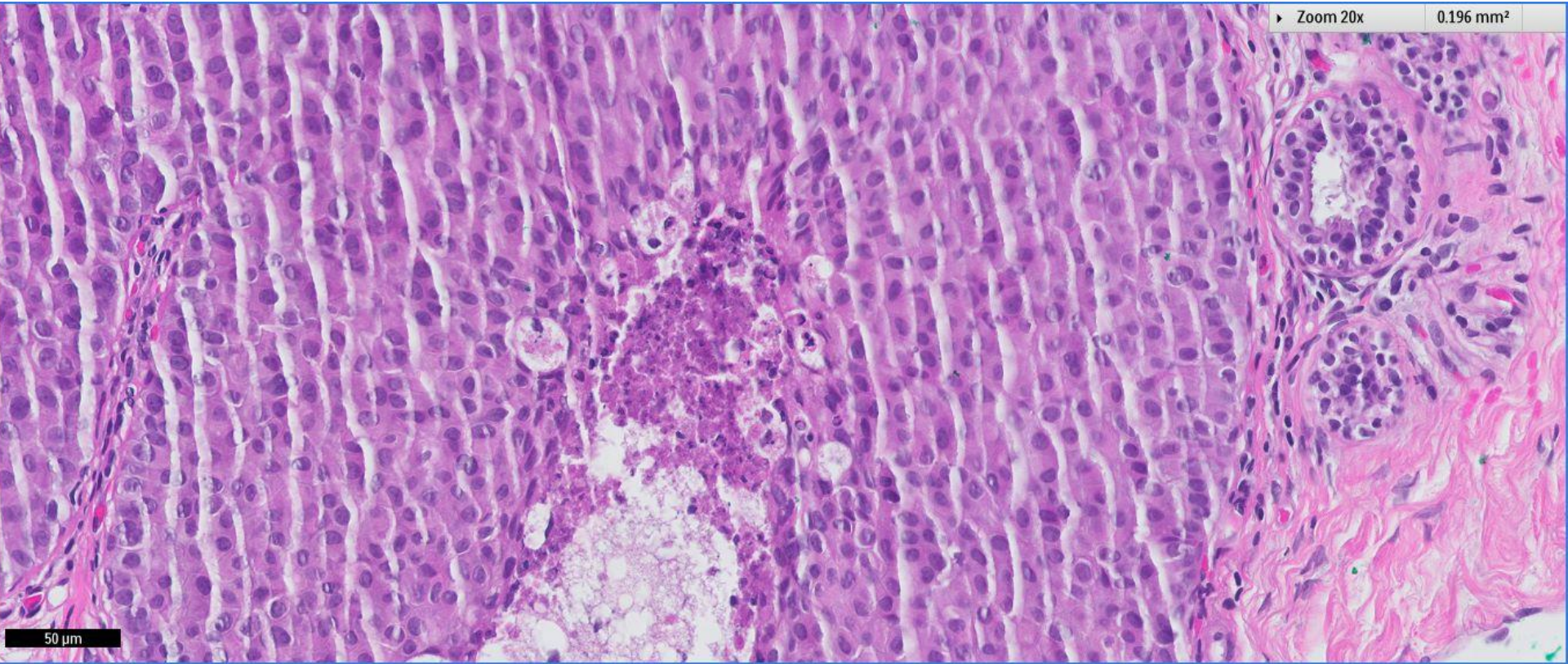
0.196 mm²



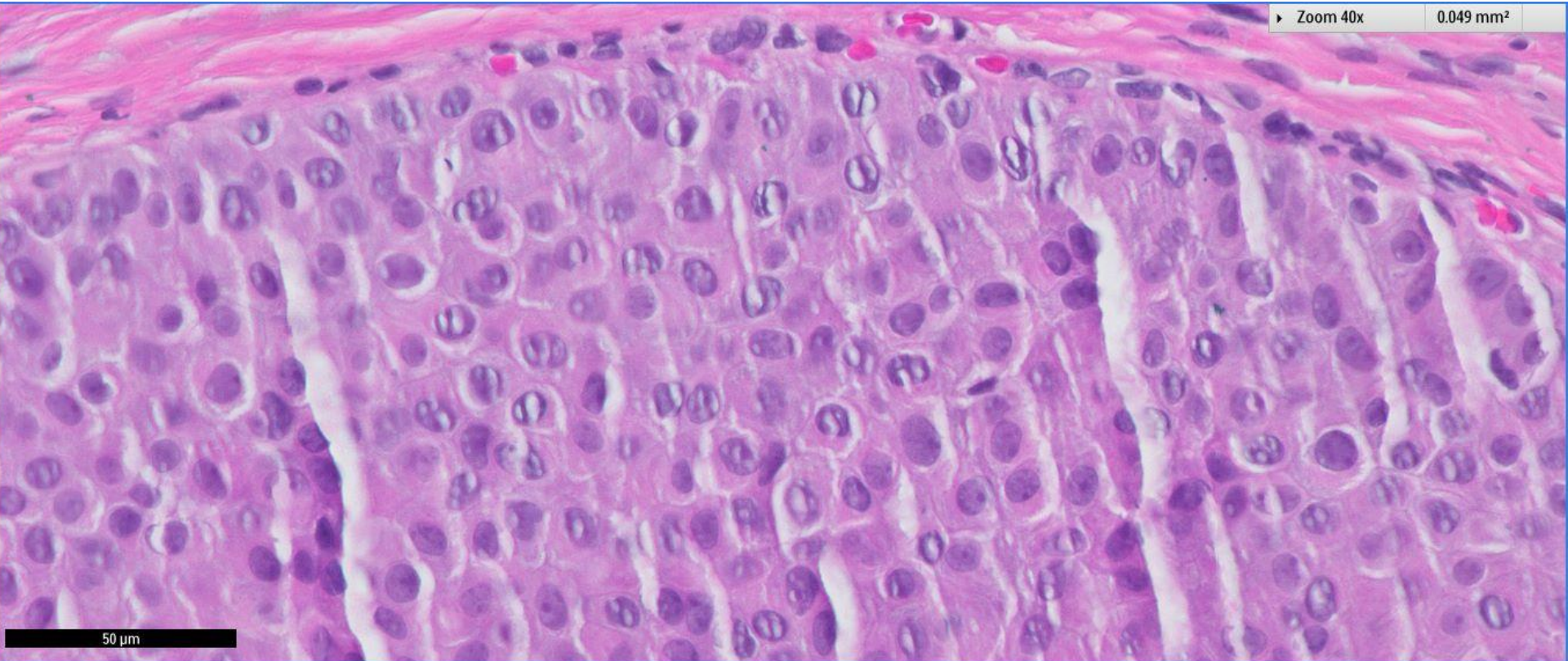
50 μm

Zoom 20x

0.196 mm²



50 μm



Zoom 40x

0.049 mm²

50 μm

Stereotactic mammotome biopsy, right breast calcifications:

Ductal carcinoma in situ, low to intermediate nuclear grade, with focal necrosis and calcifications, solid morphology



 Breast
Pathology
Course 2014

