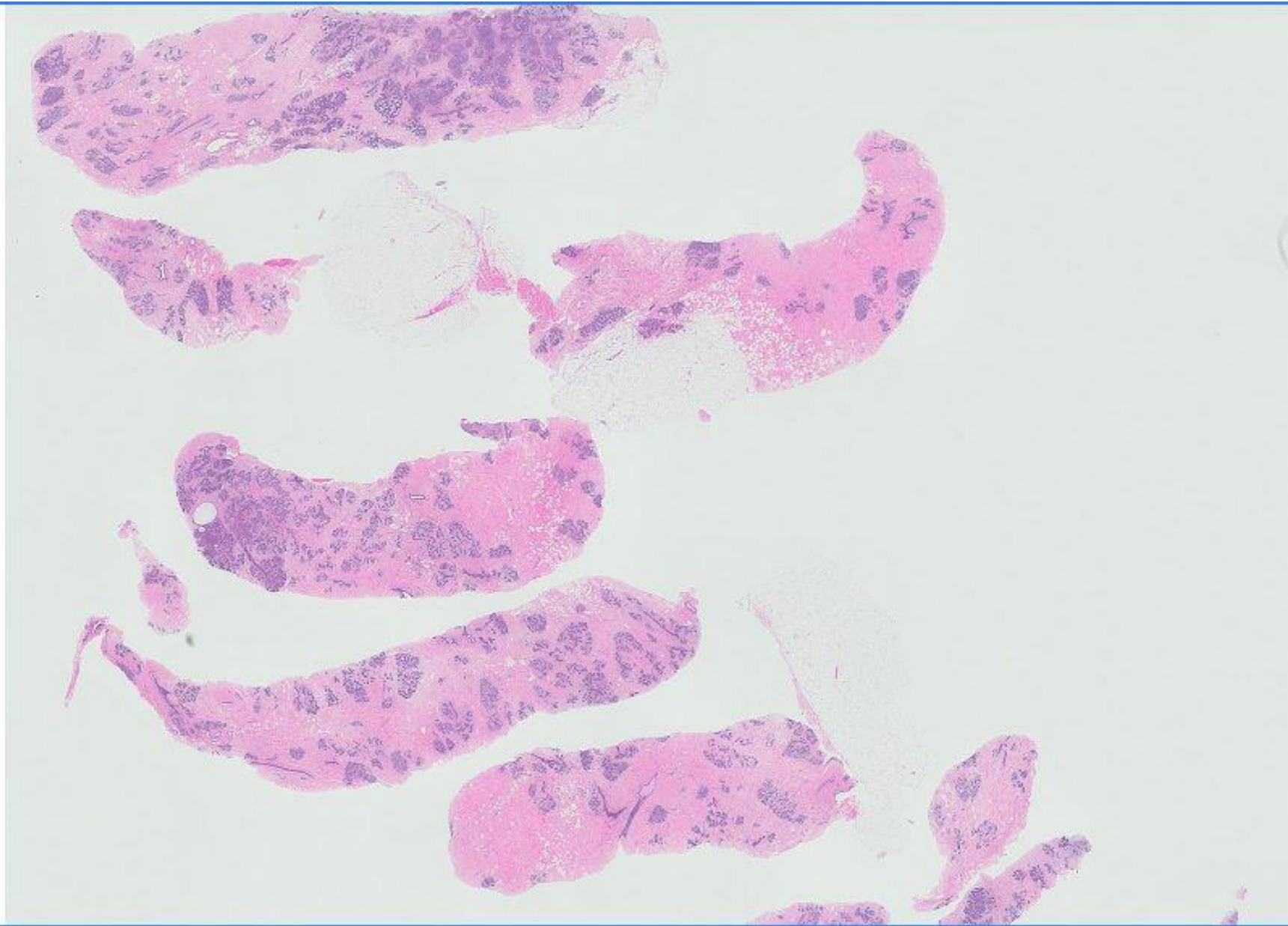


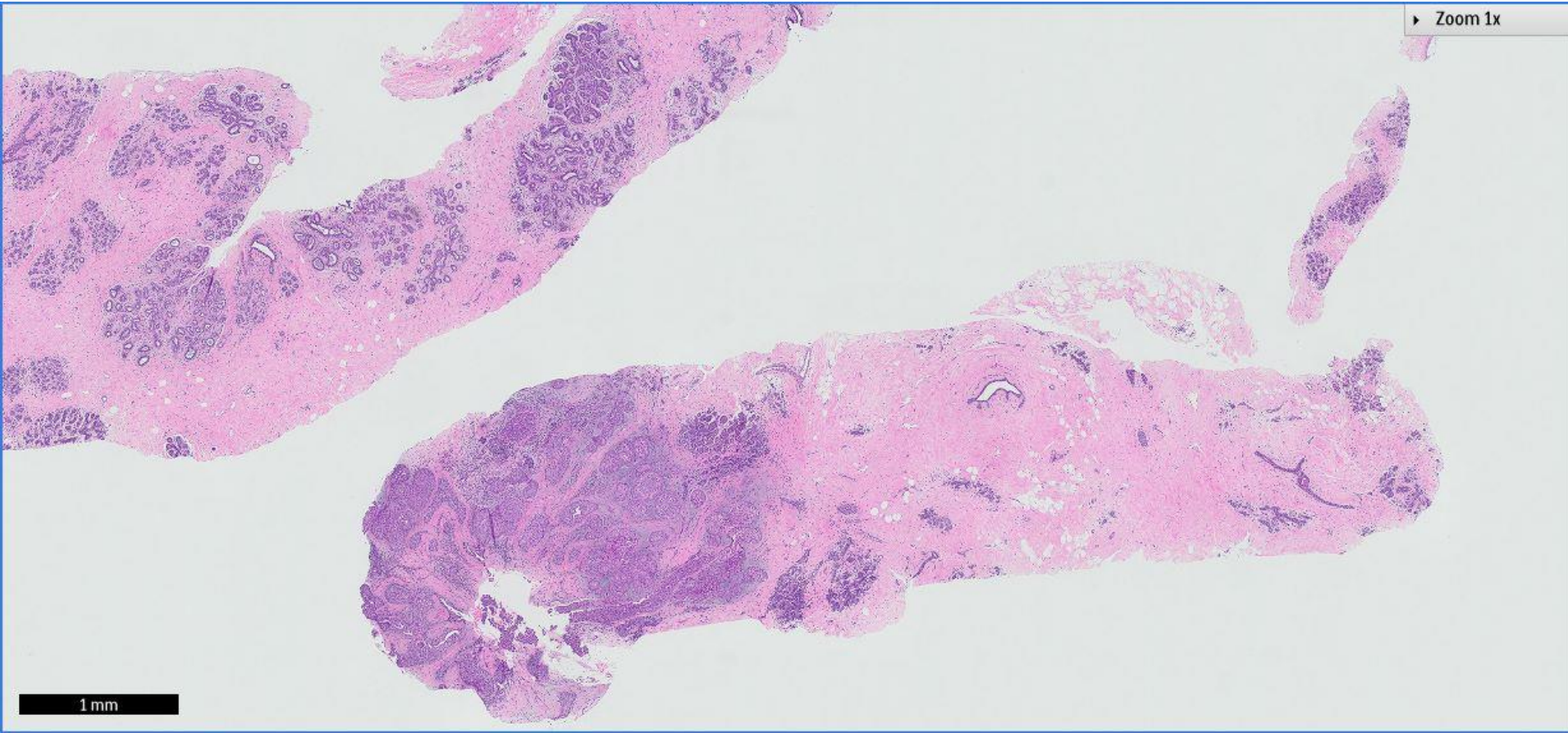
Case 45

40 year old woman with a right breast lesion underwent mammotome excision biopsy.



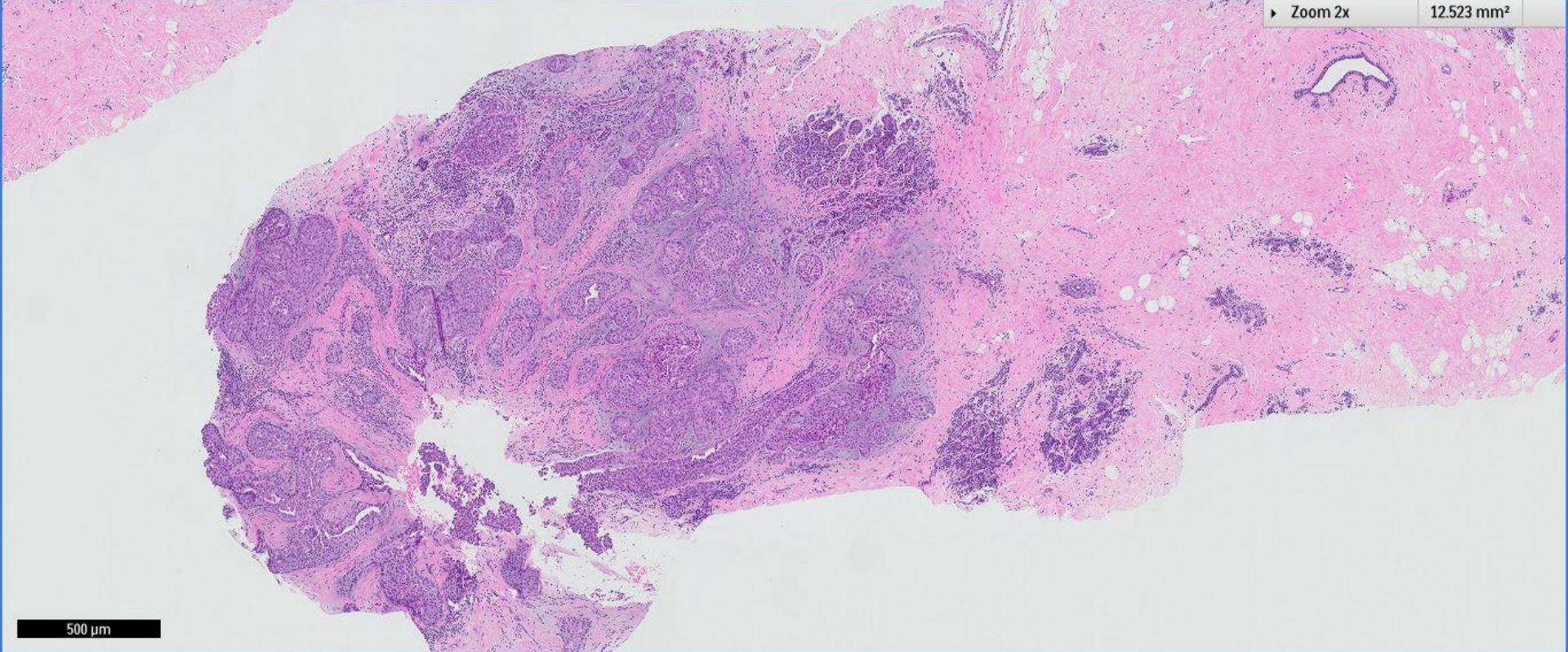


▶ Zoom 1x



1 mm

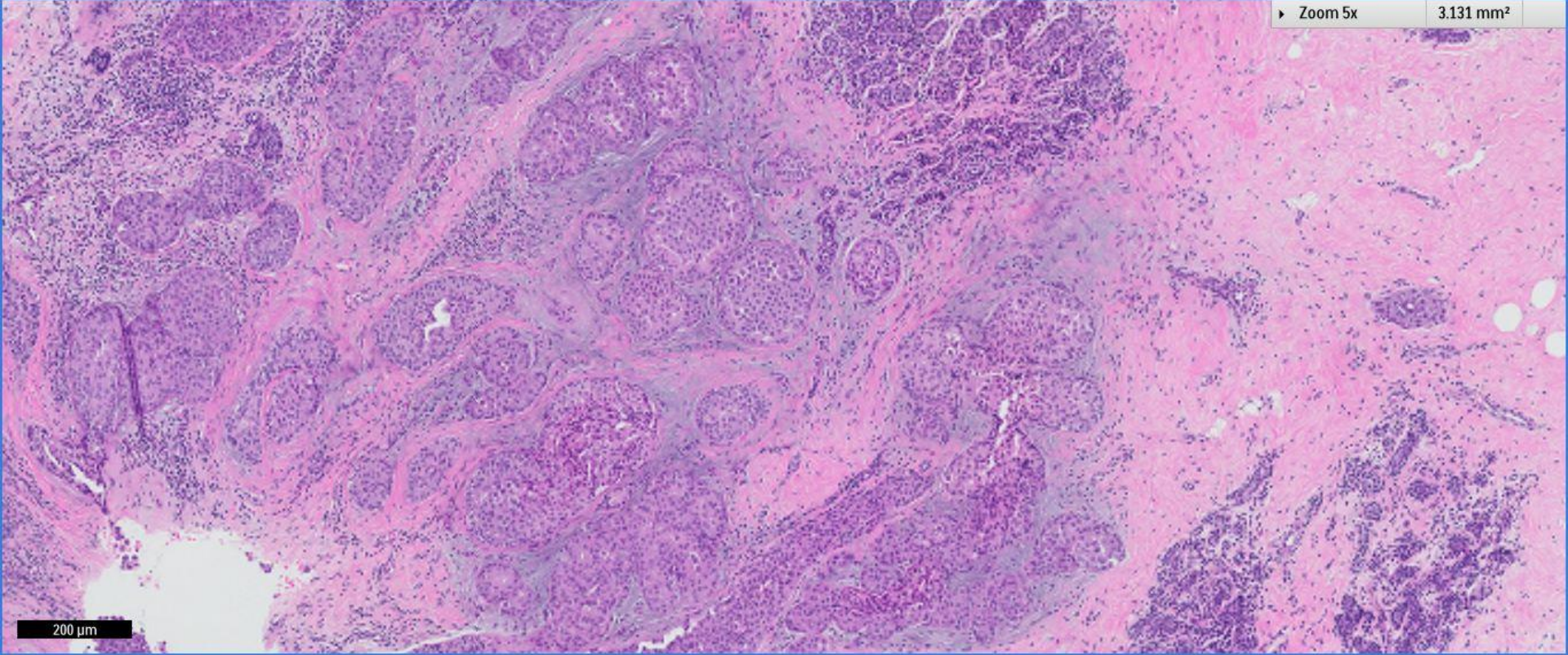
▶ Zoom 2x 12.523 mm²



500 μm

▶ Zoom 5x

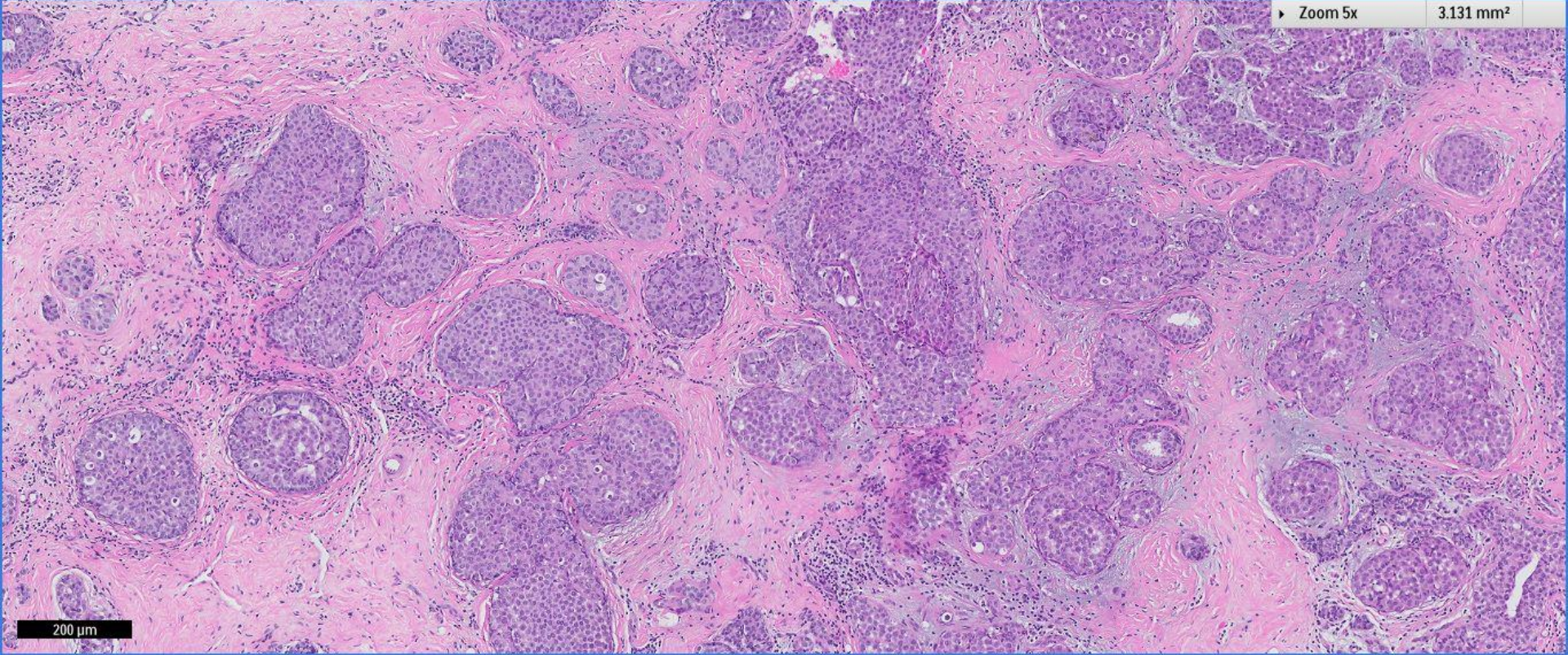
3.131 mm²



200 μm

▶ Zoom 5x

3.131 mm²

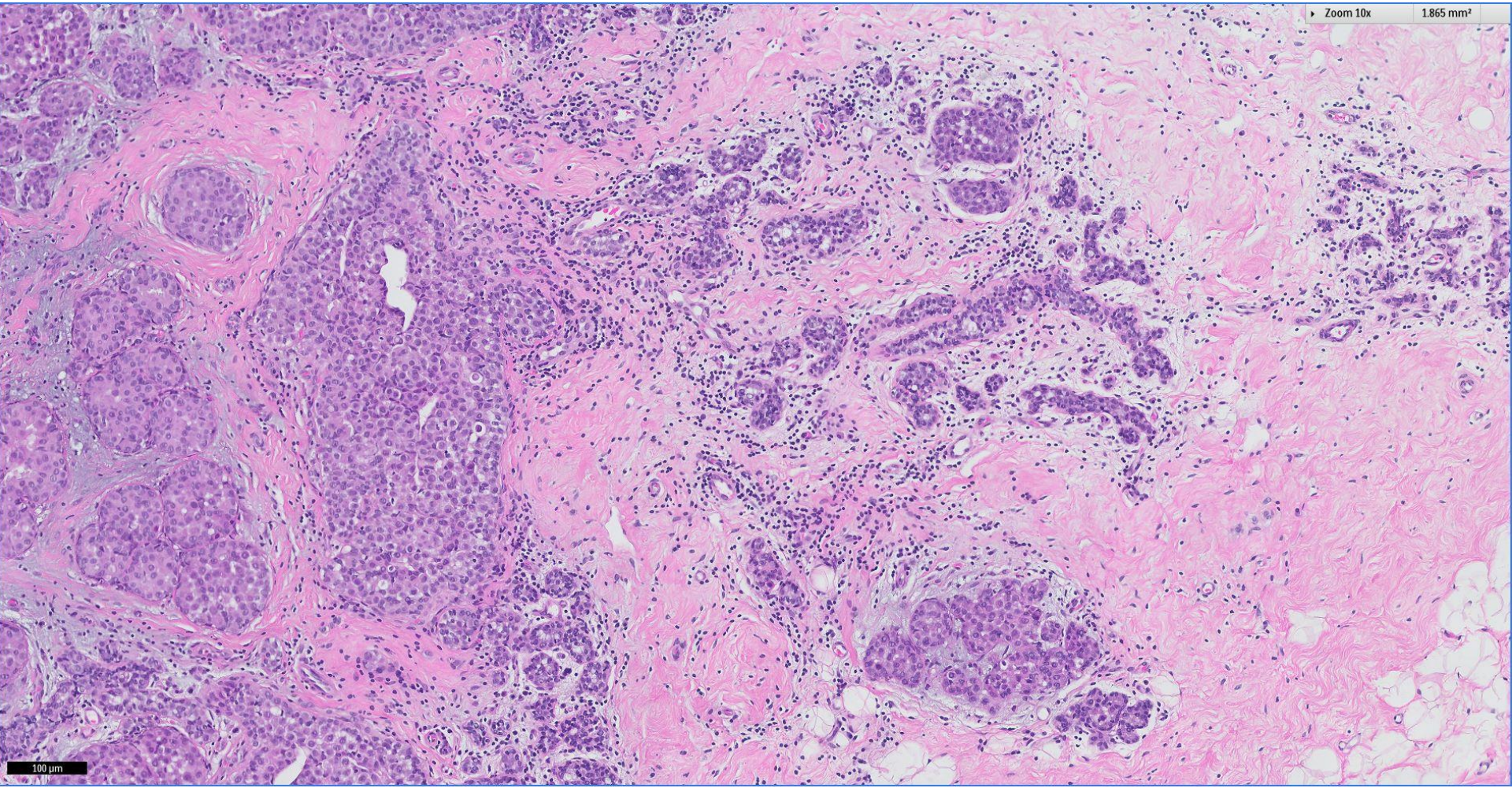


200 μm



Zoom 10x

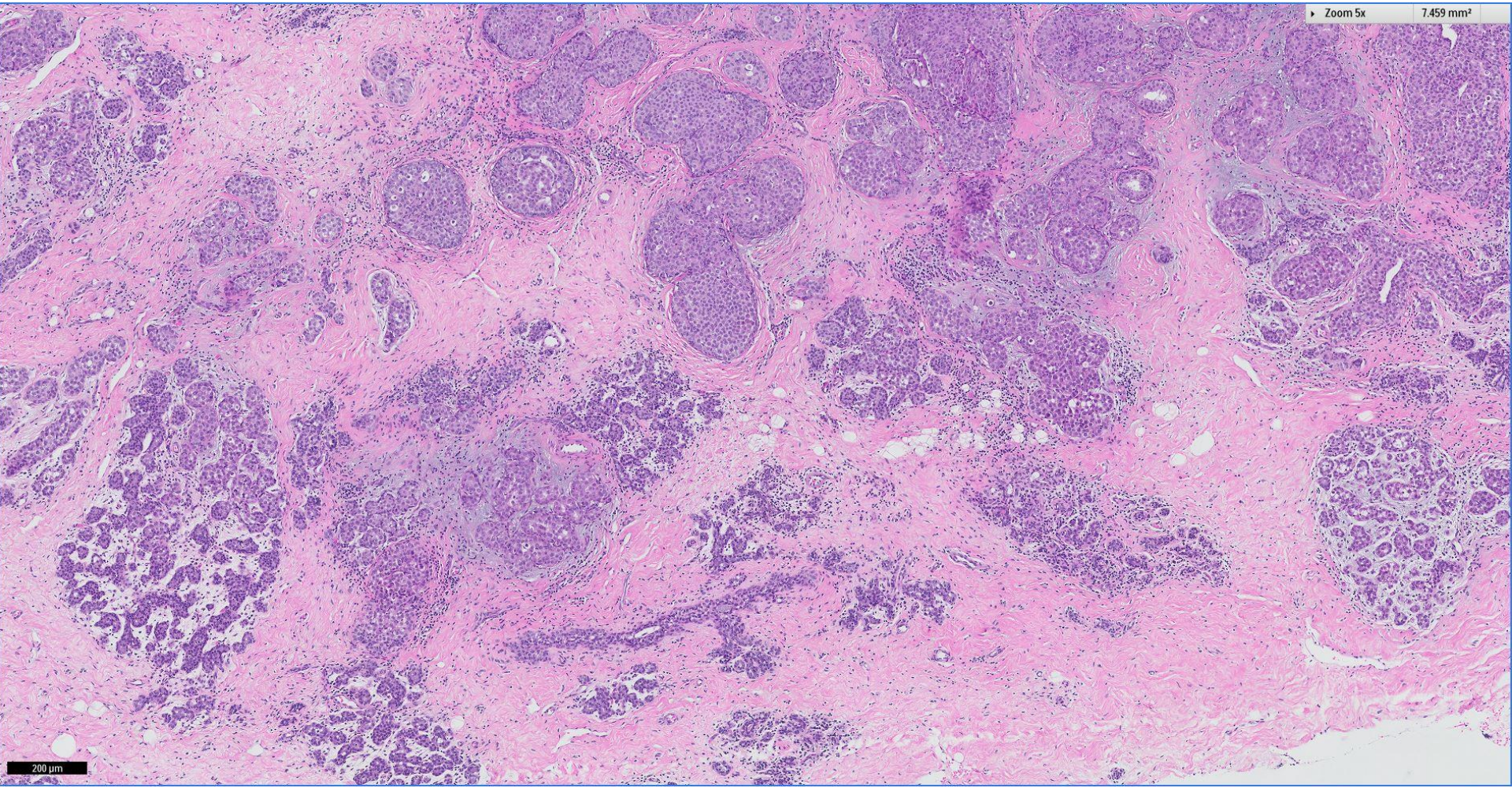
1.865 mm²



100 μ m

Zoom 5x

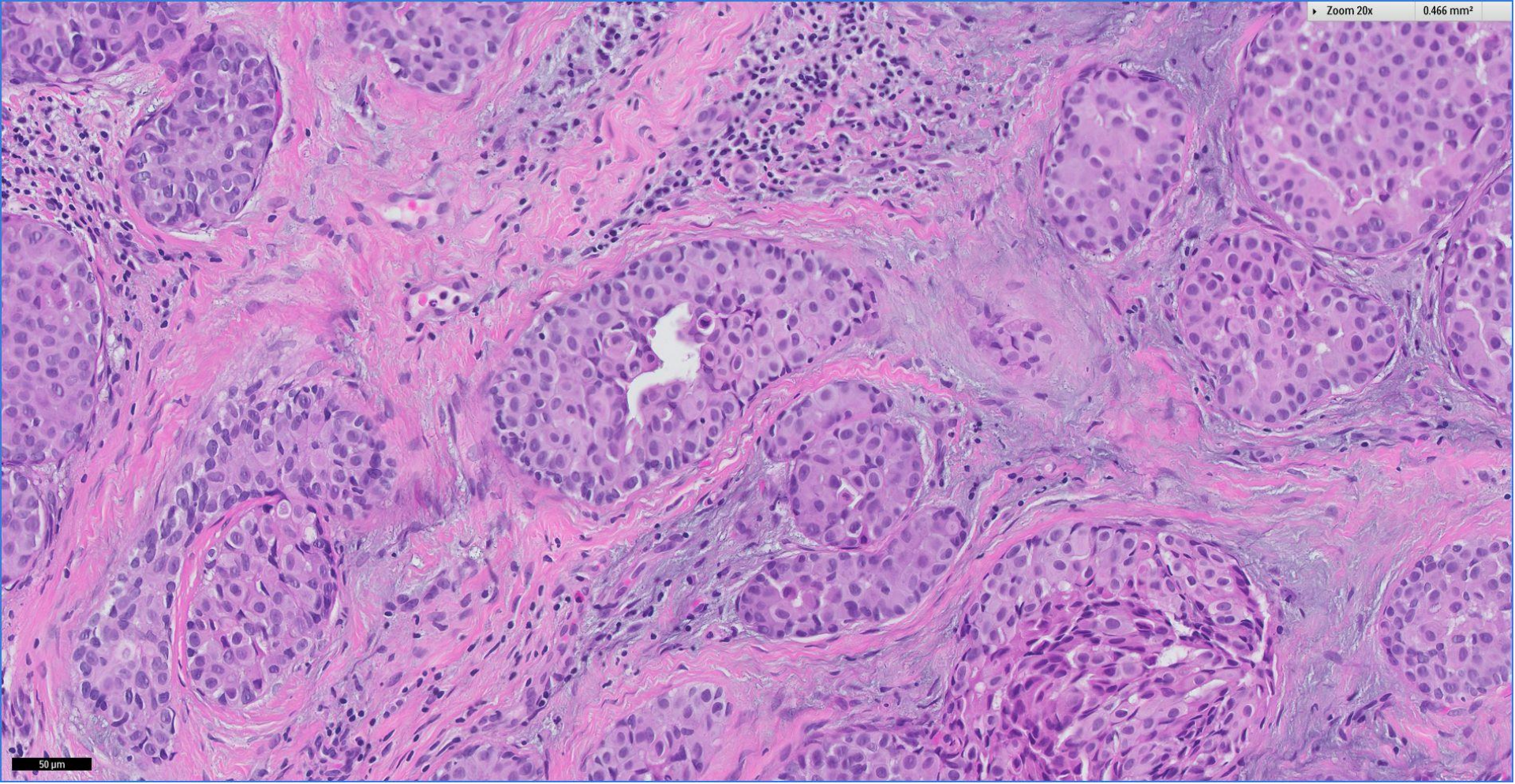
7.459 mm²



200 μ m

Zoom 20x

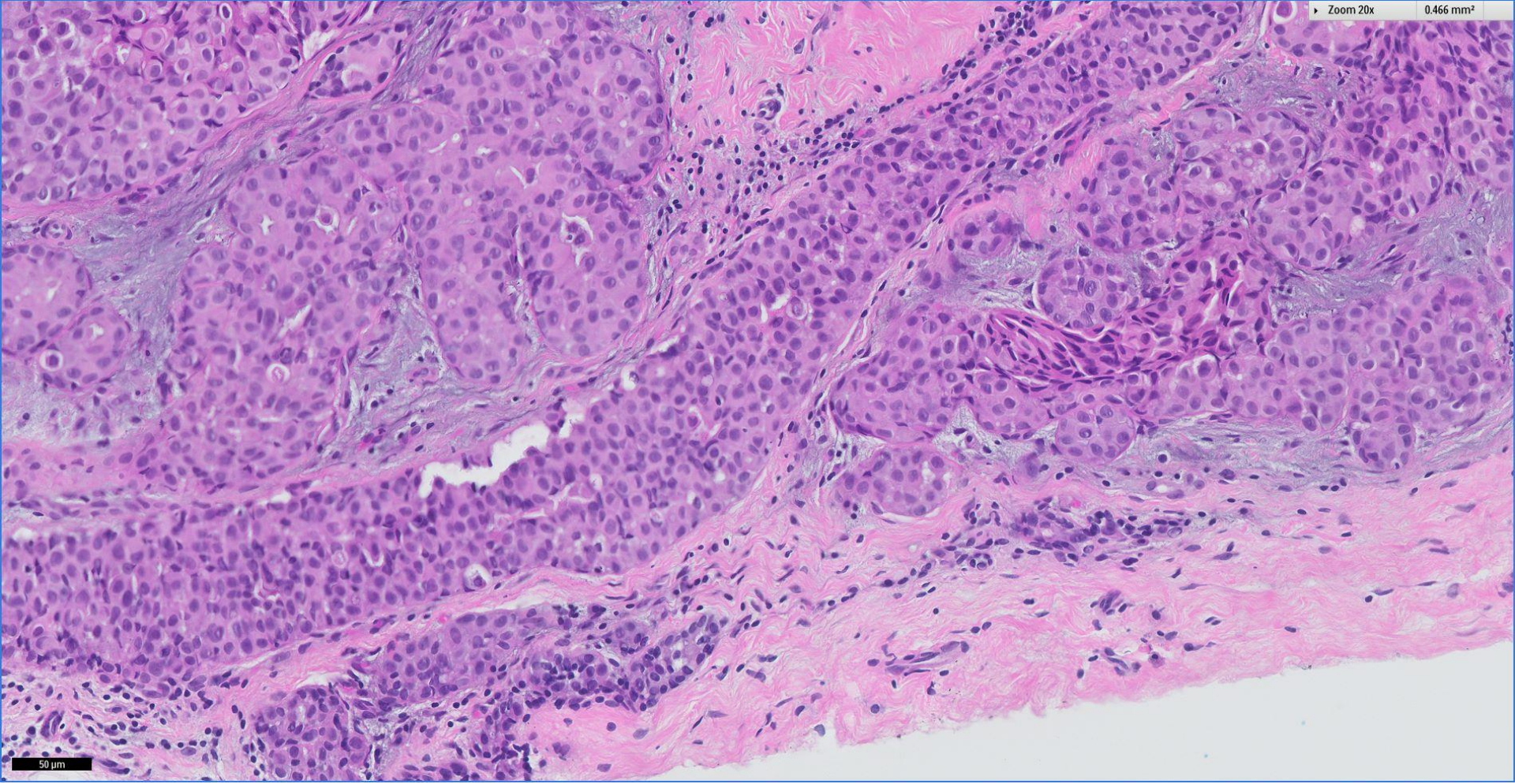
0.466 mm²



50 μ m

Zoom 20x

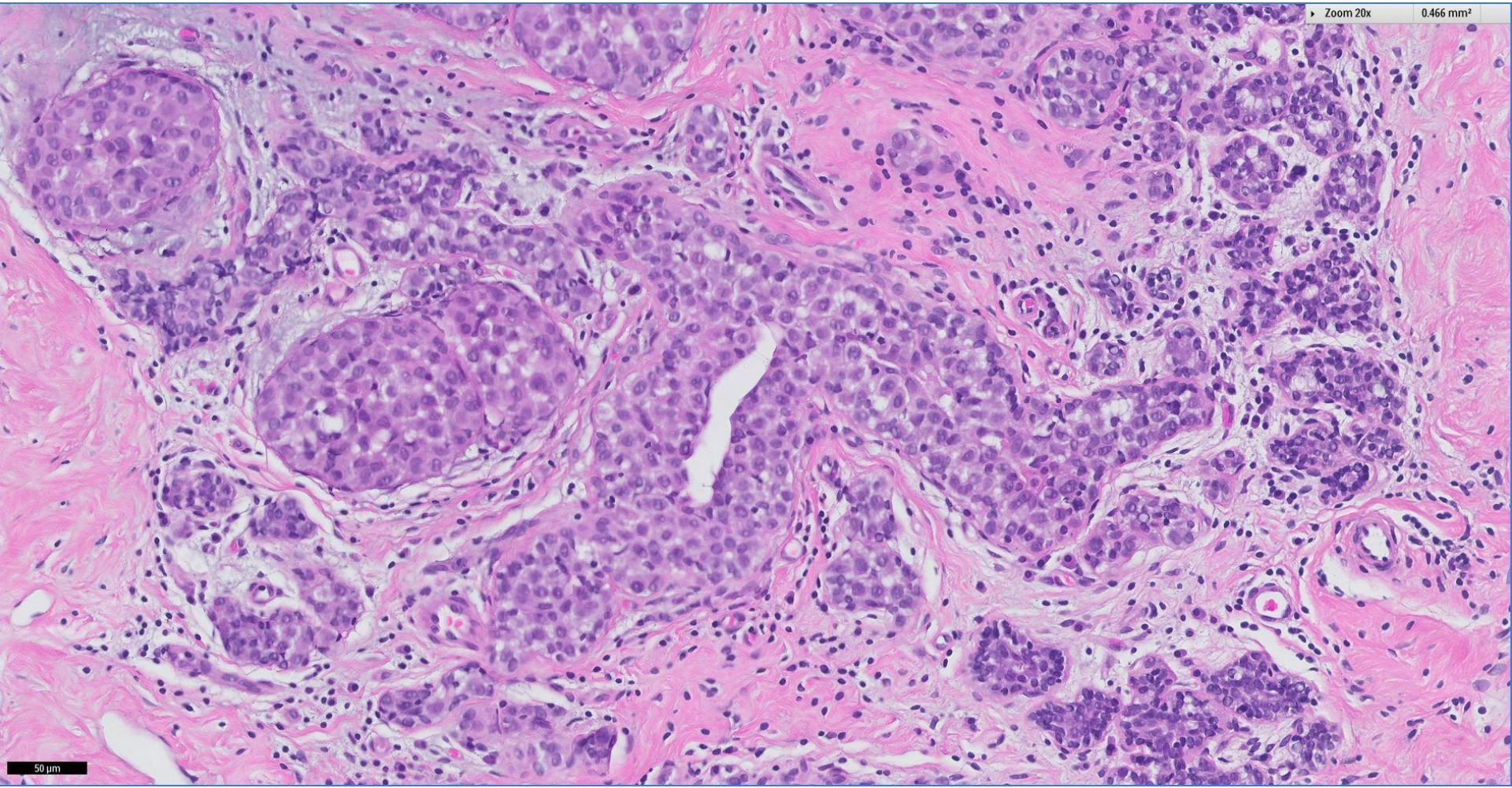
0.466 mm²



50 μm

Zoom 20x

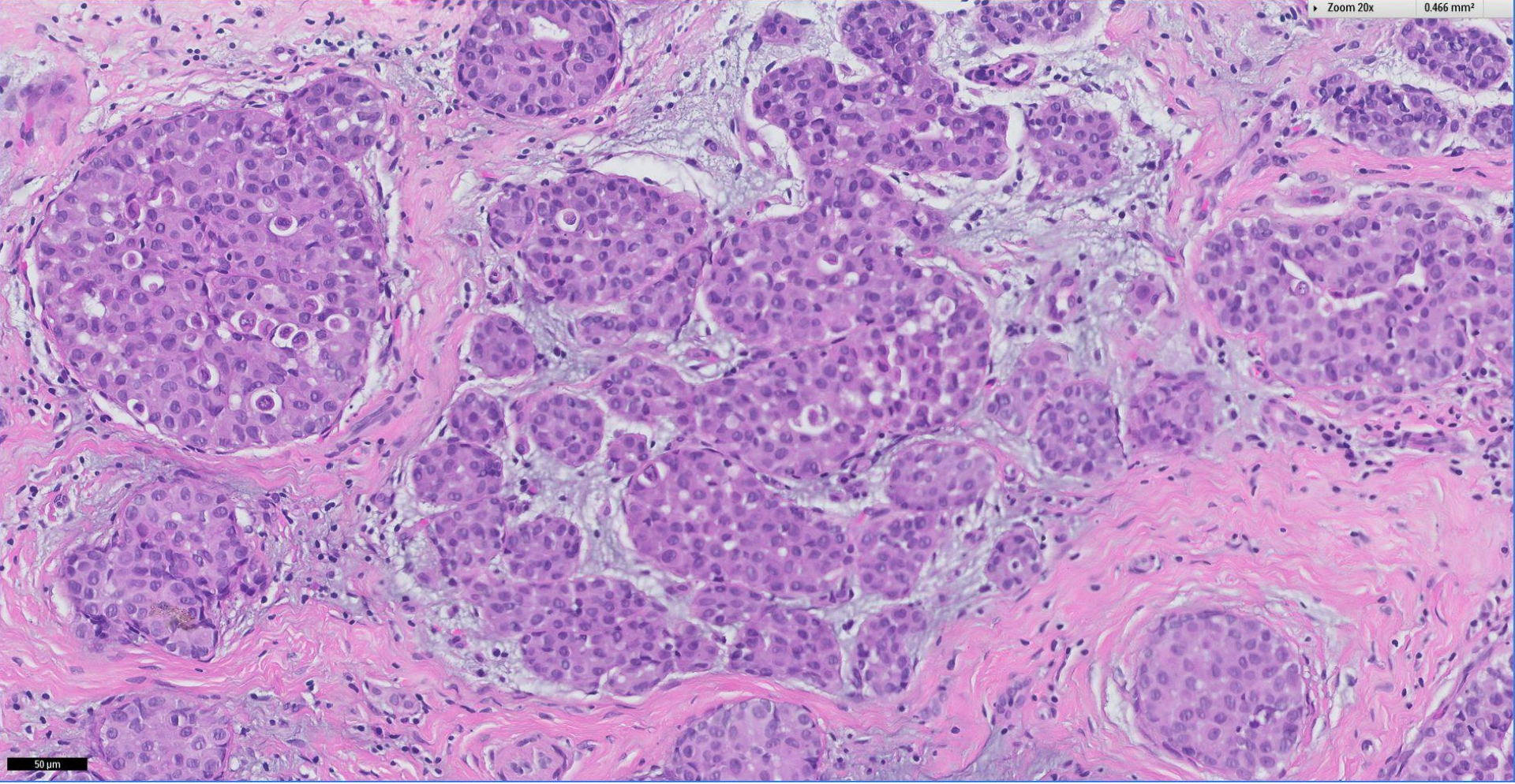
0.466 mm²



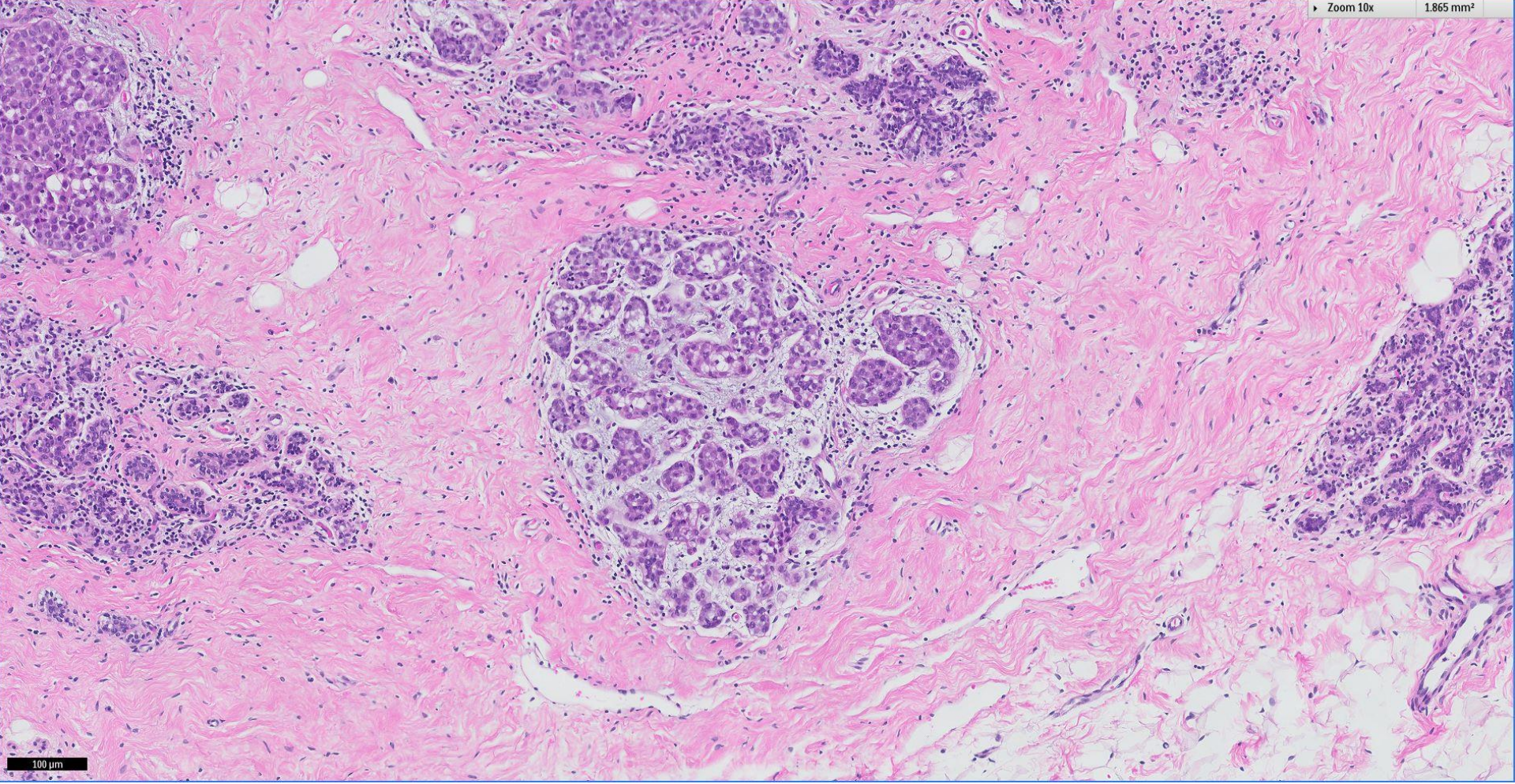
50 µm

Zoom 20x

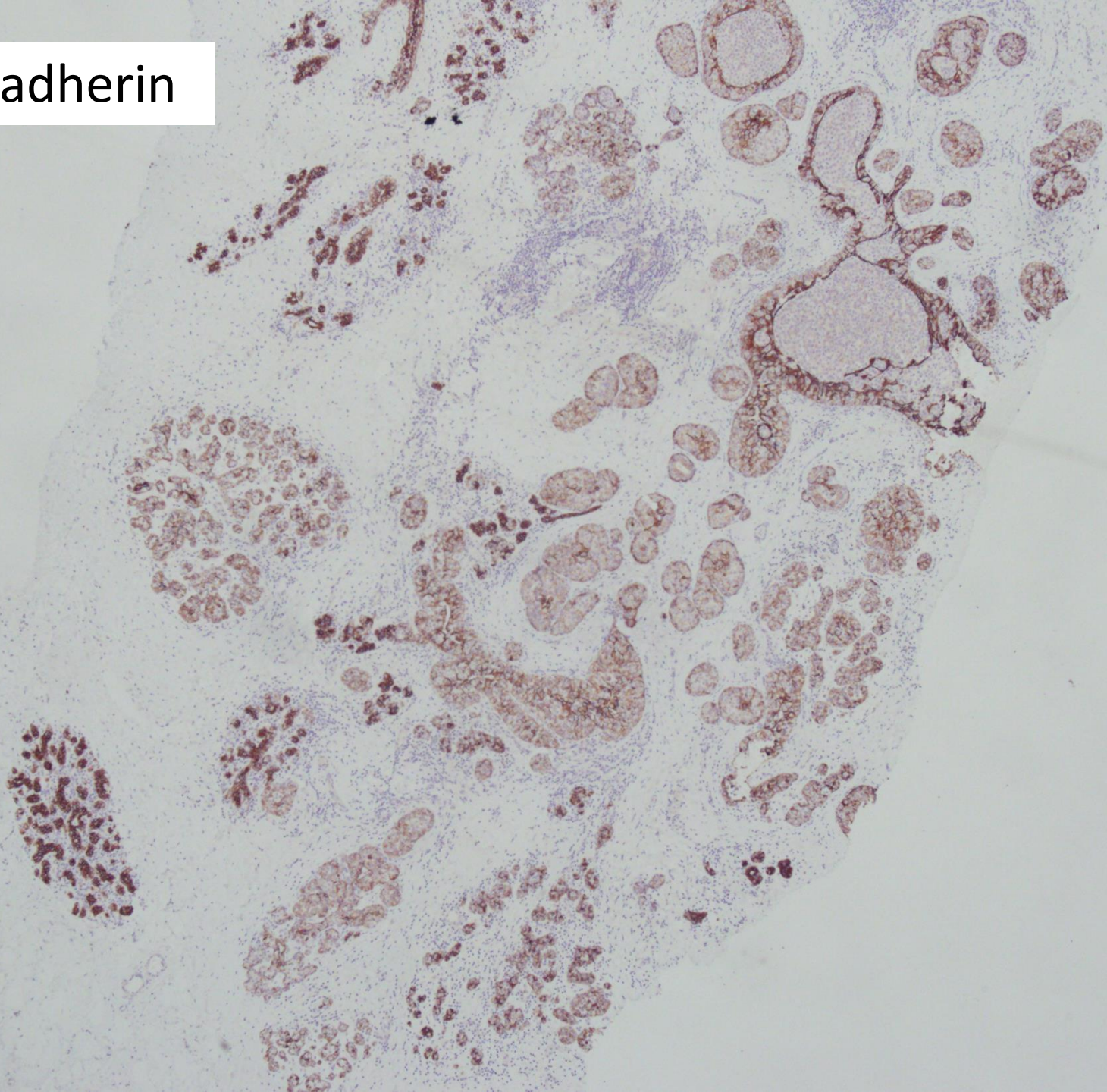
0.466 mm²



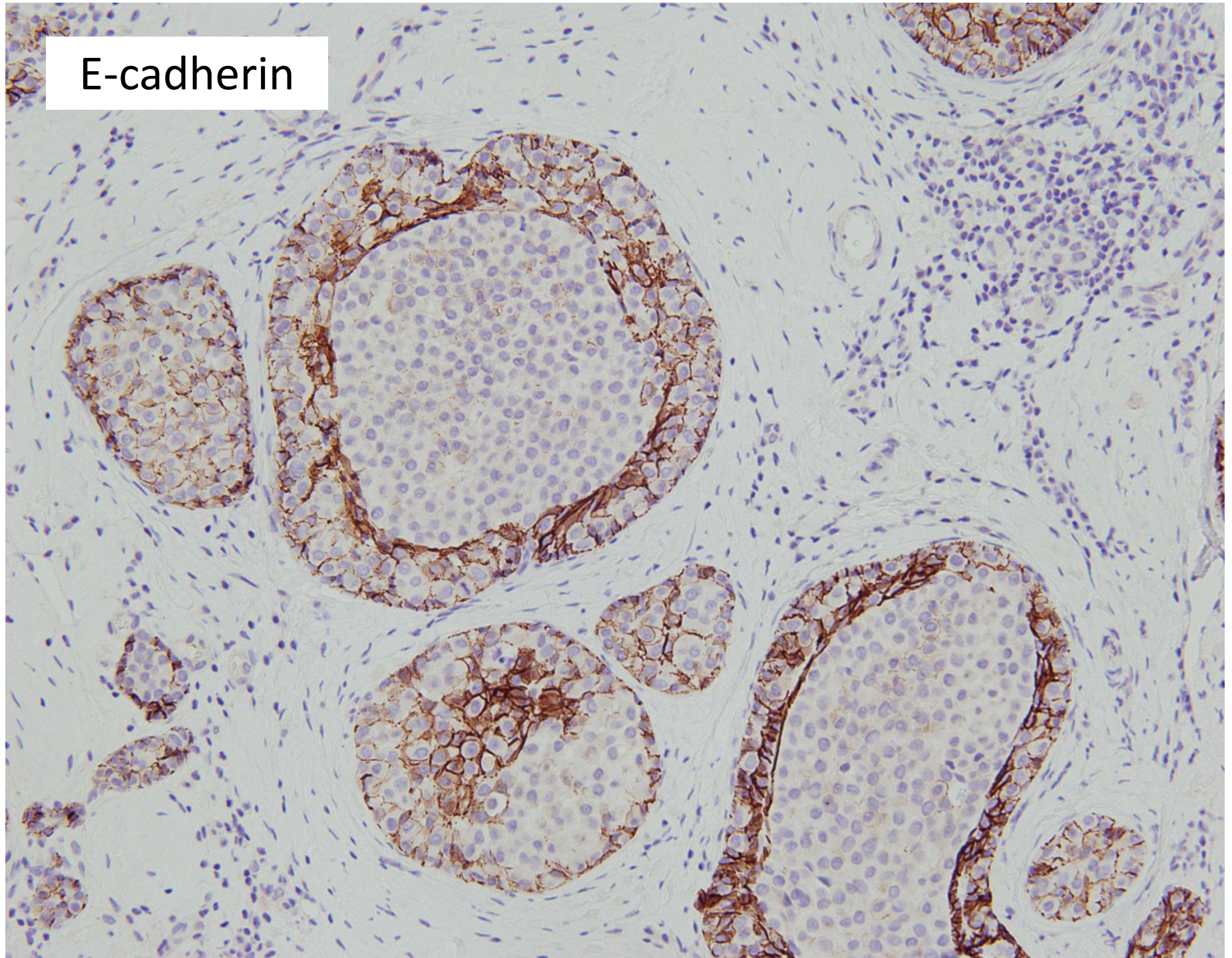
50 μm



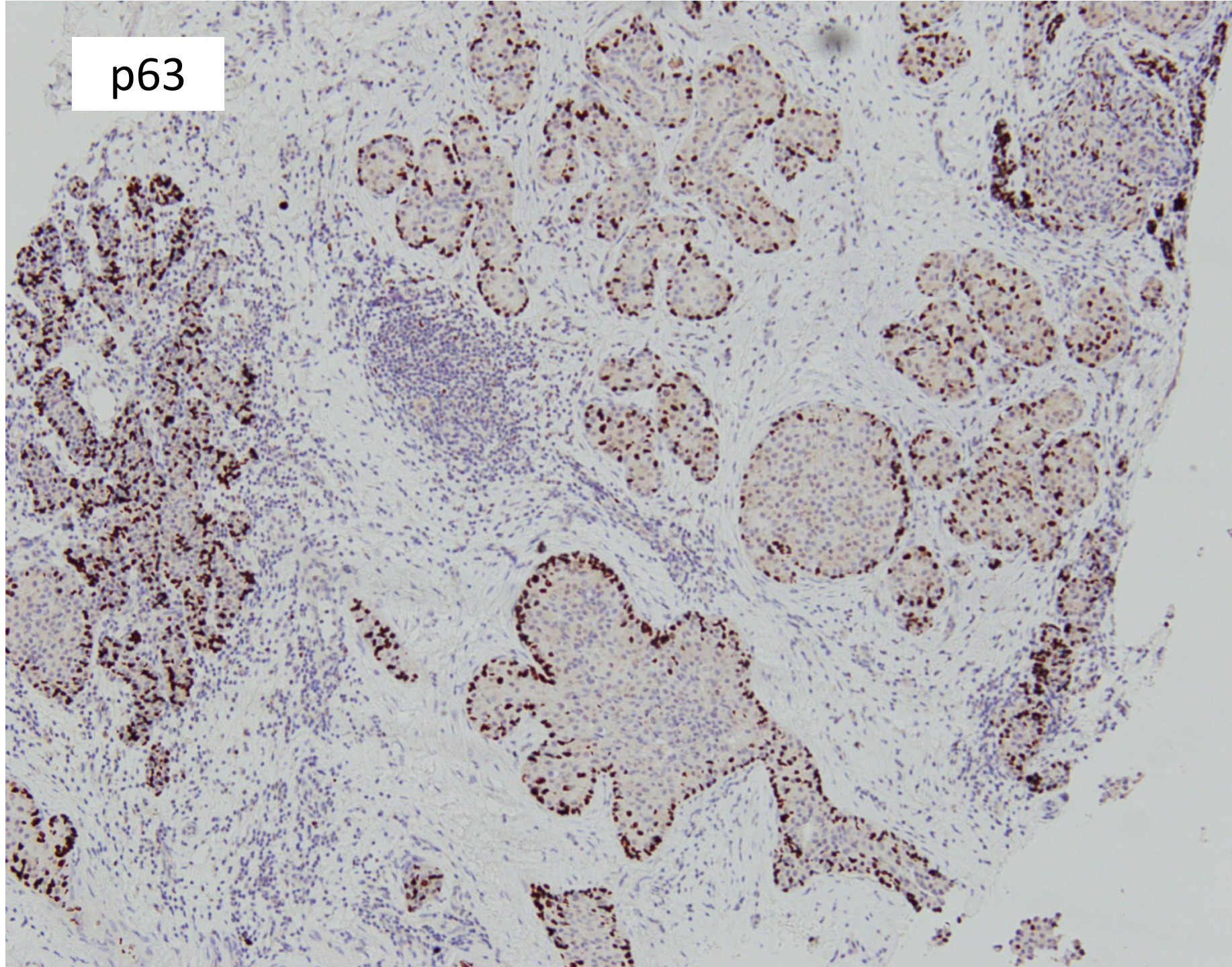
E-cadherin



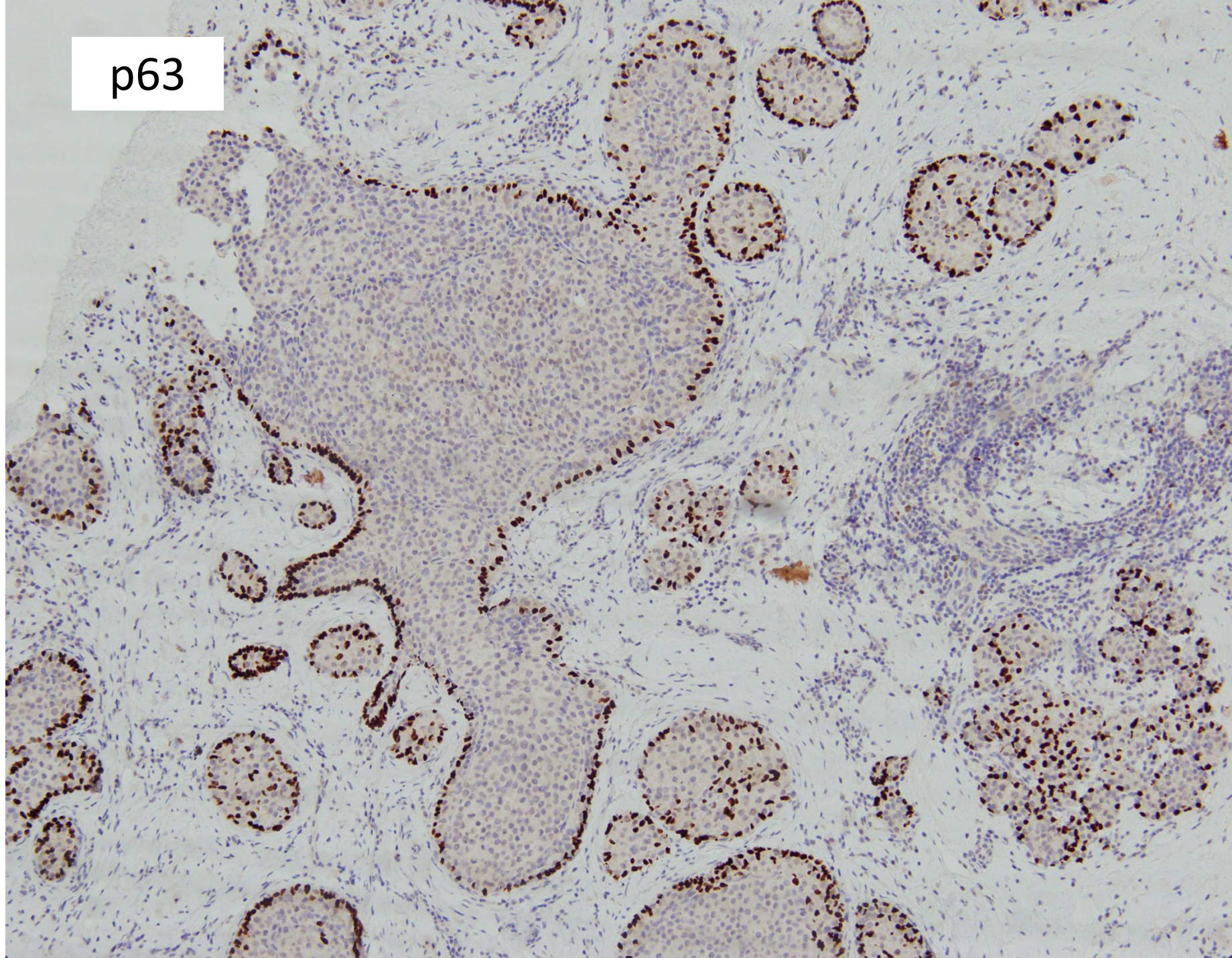
E-cadherin



p63



p63



Mammotome excision biopsy, right
breast lesion:

Extensive lobular carcinoma in situ



 Breast
Pathology
Course 2014

