

# Case 43

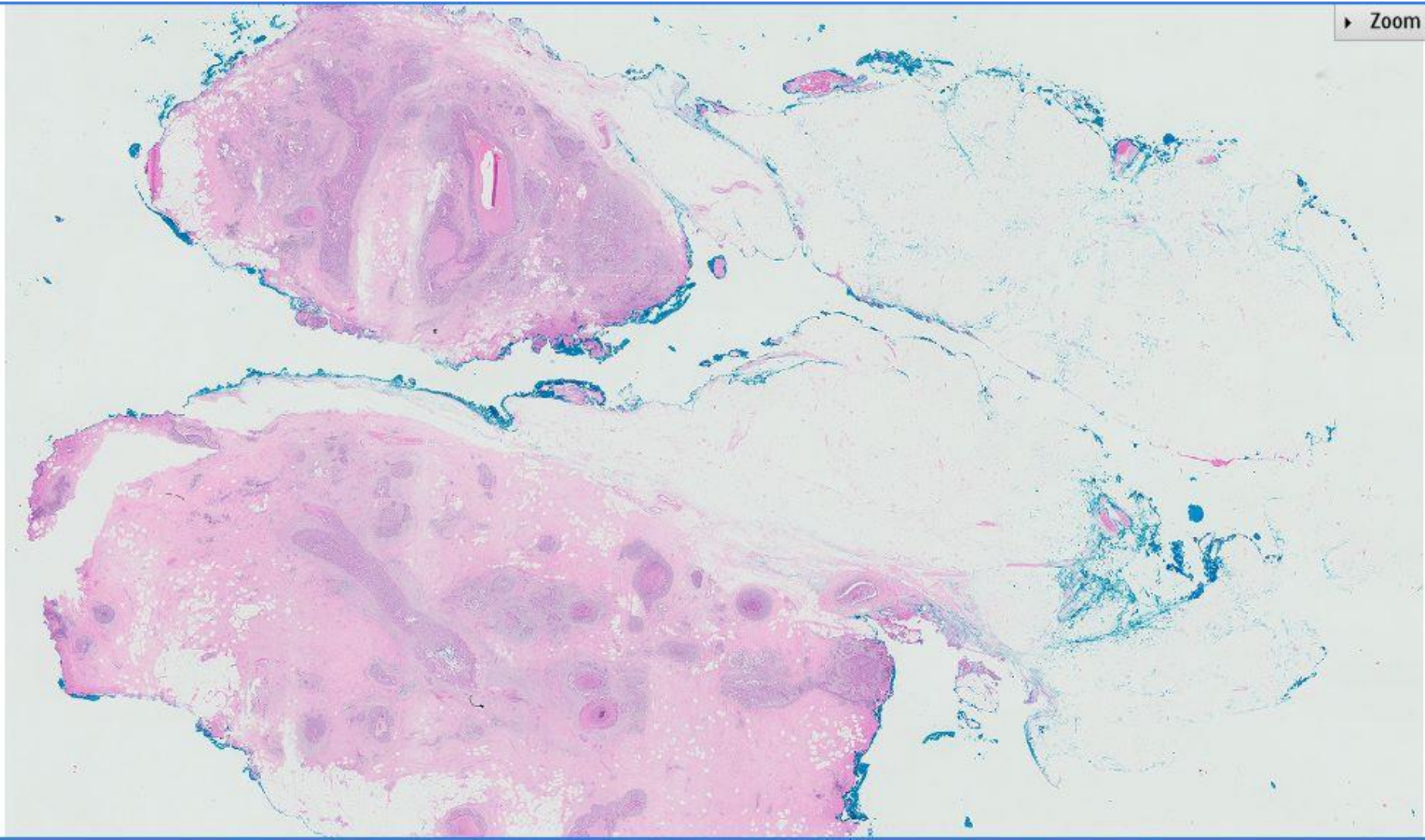
57 year old lady with a left breast lump.

Intraoperative frozen section was diagnosed as 'extensive ductal carcinoma in situ, invasion cannot be ruled out'.

Left mastectomy with sentinel lymph node biopsy was performed.

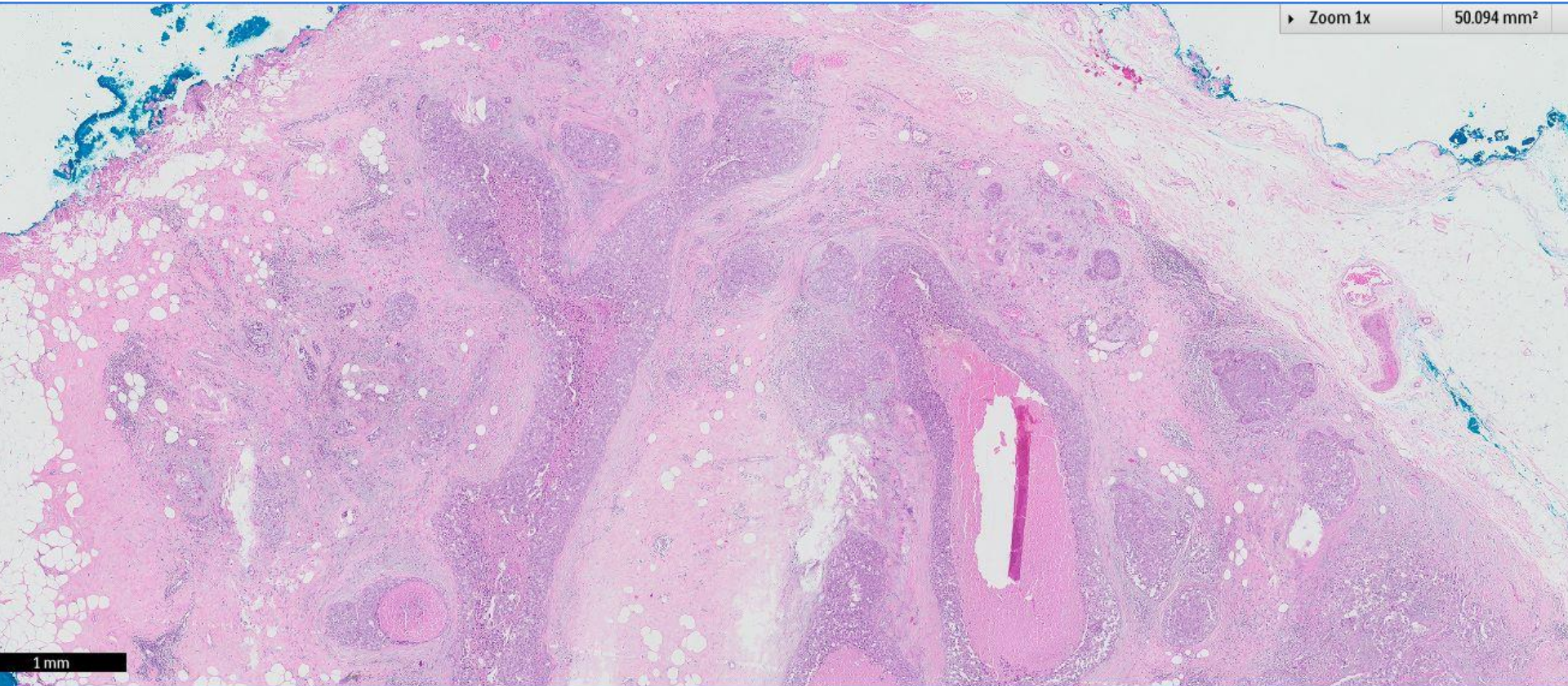
Sections are from the mastectomy.





▶ Zoom 1x

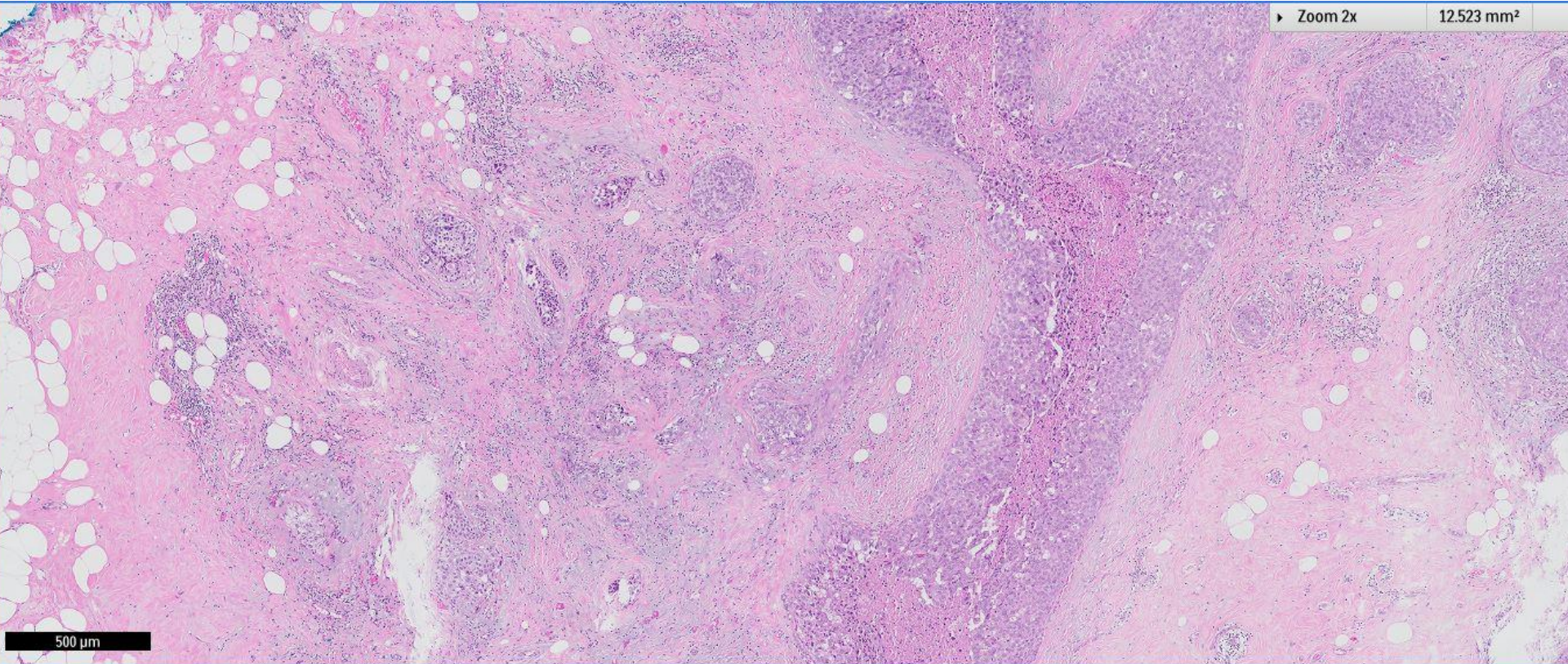
50.094 mm<sup>2</sup>



1 mm

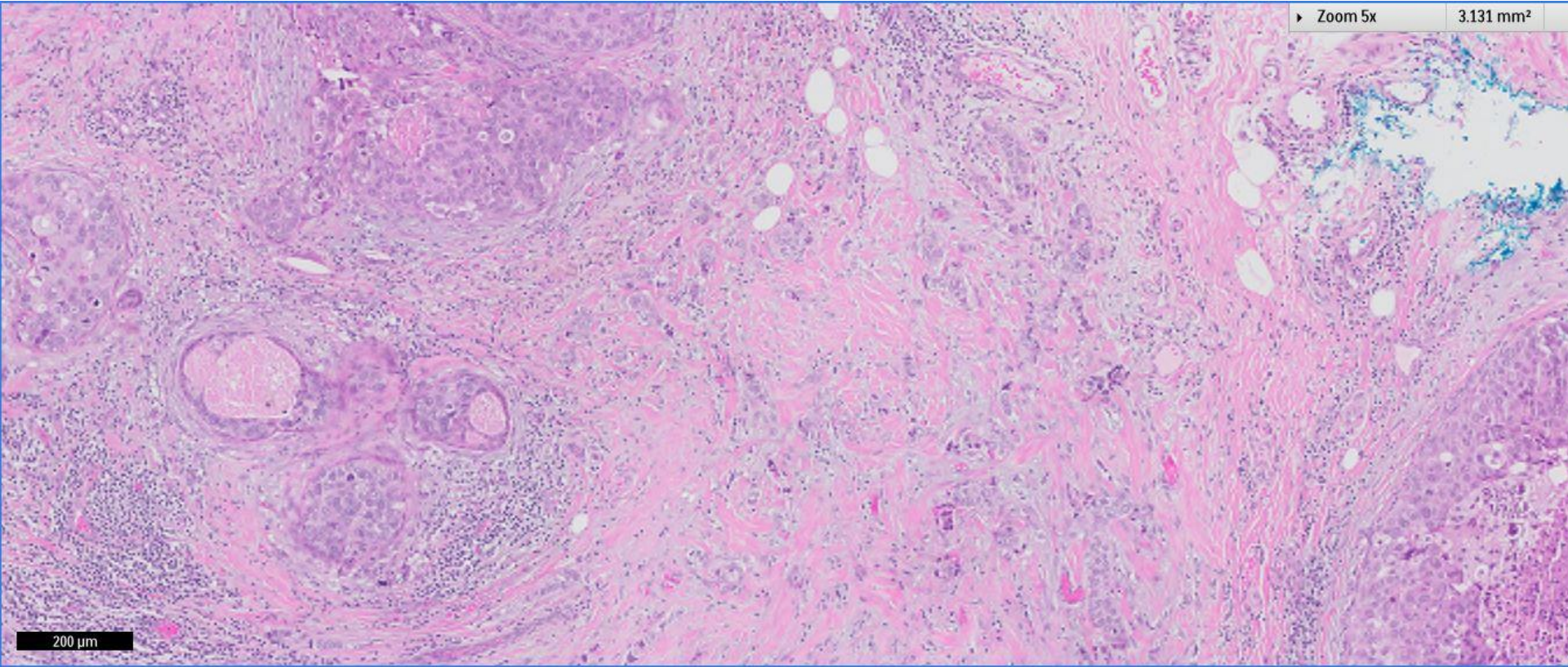
▶ Zoom 2x

12.523 mm<sup>2</sup>

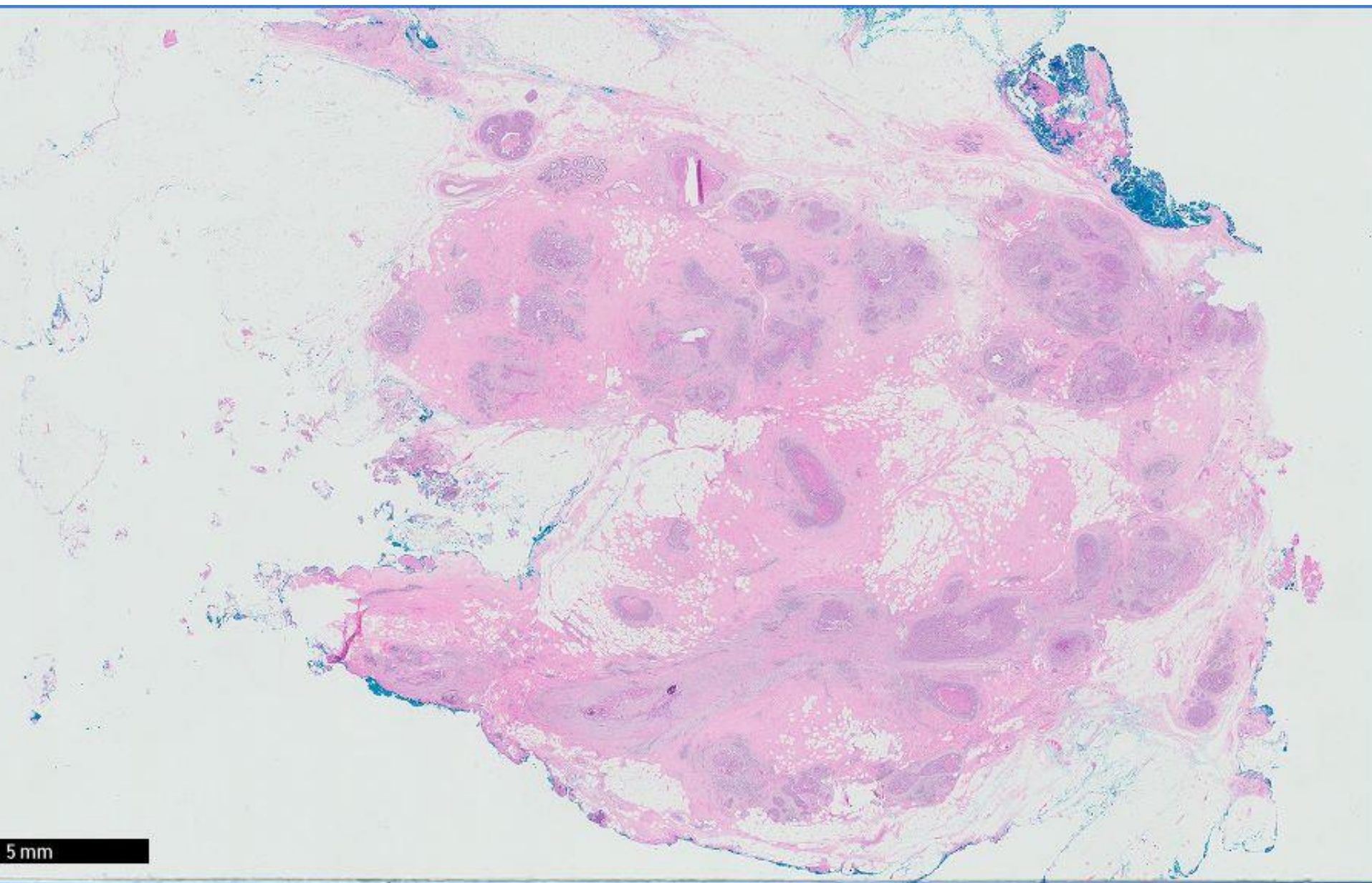


500  $\mu$ m

► Zoom 5x 3.131 mm²



200 µm

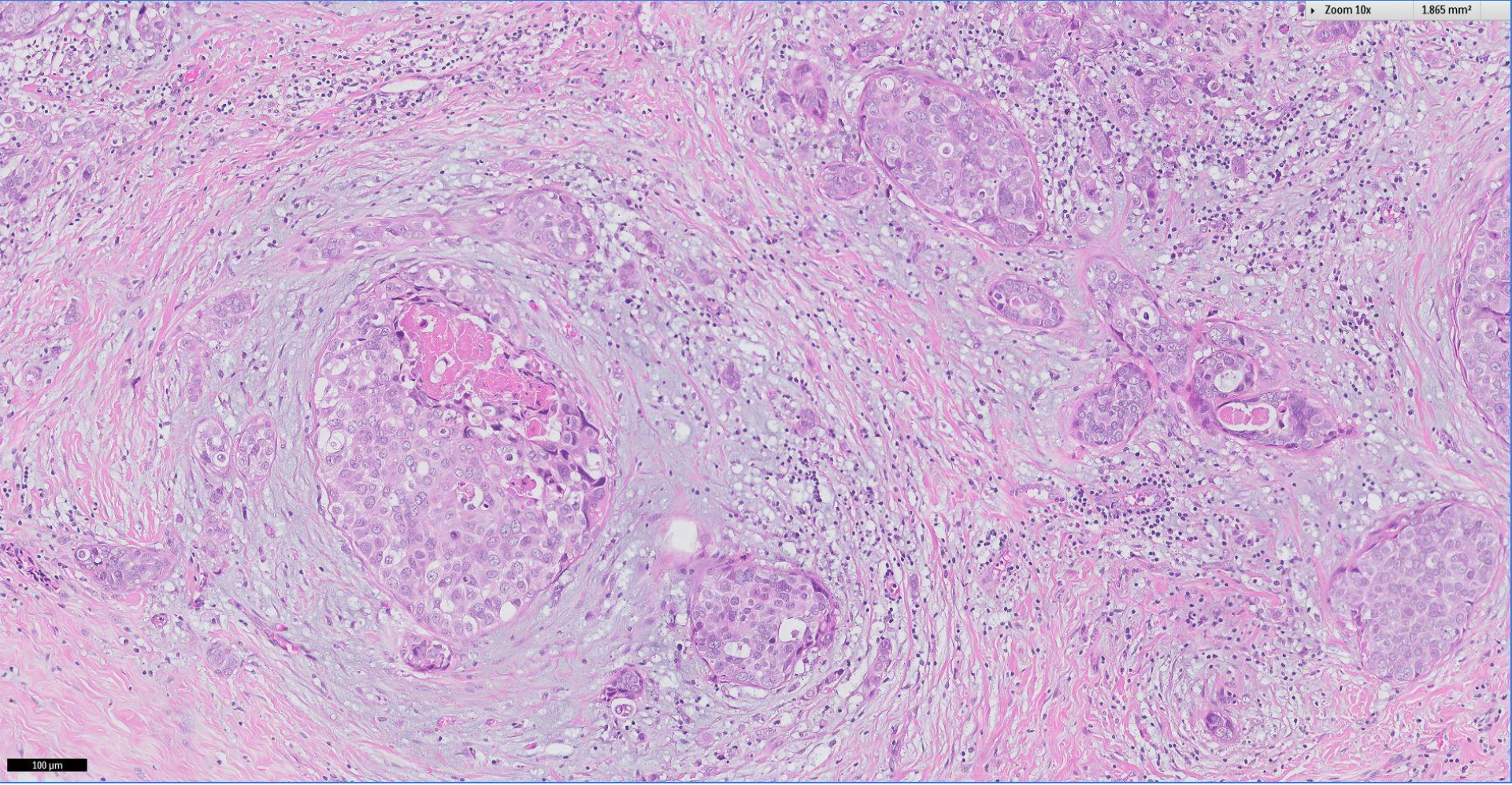


5 mm



Zoom 10x

1.865 mm<sup>2</sup>

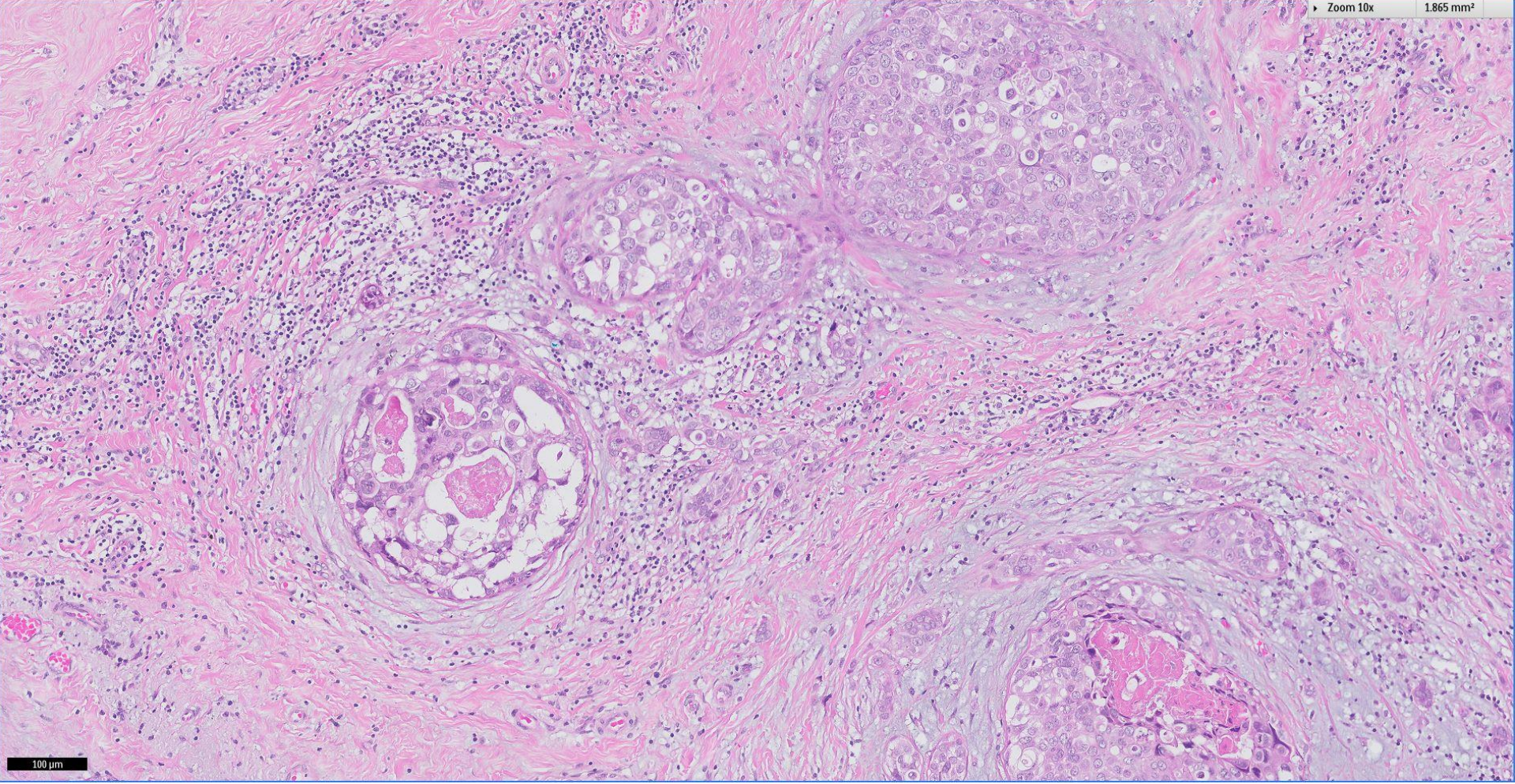


100  $\mu$ m



Zoom 10x

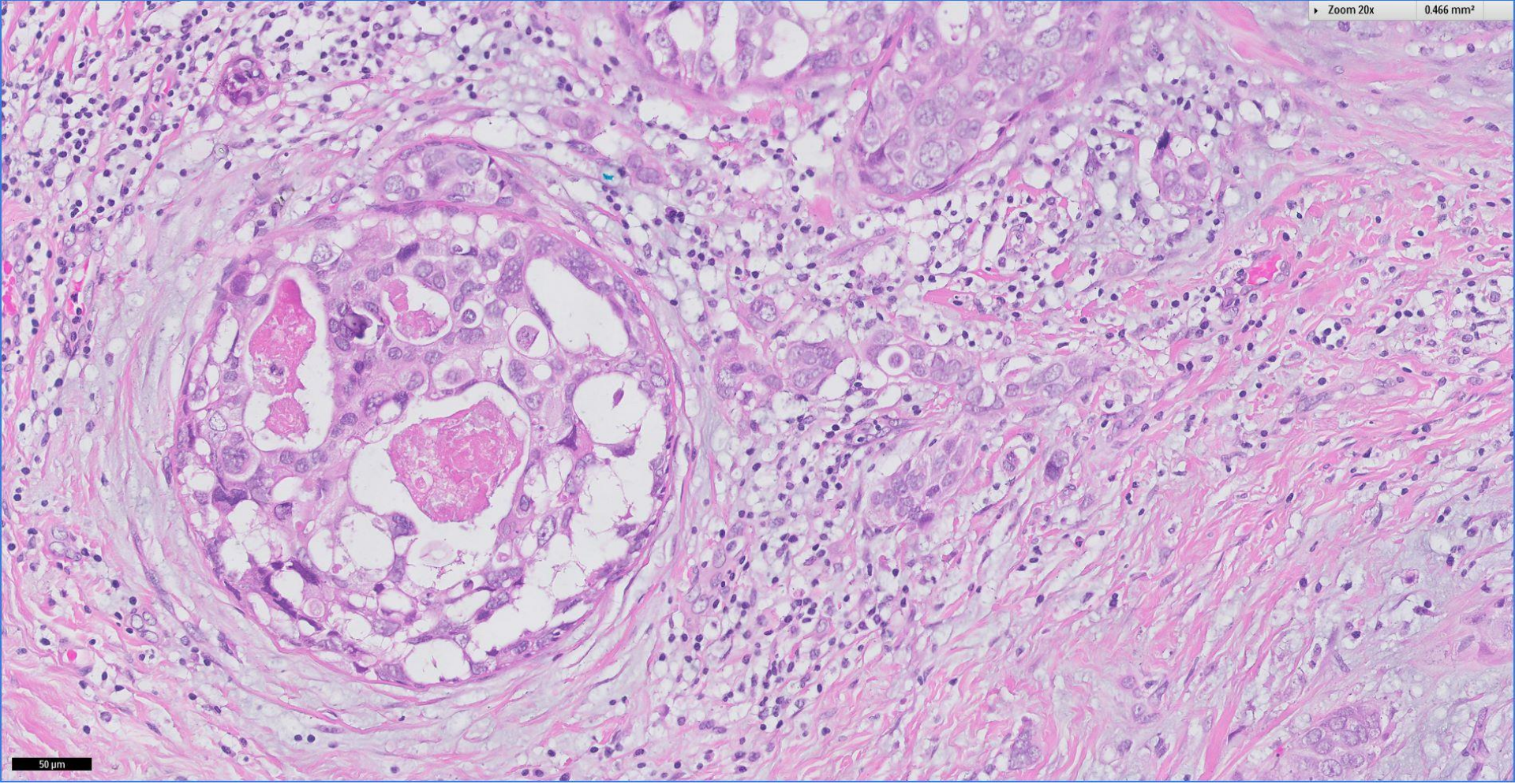
1.865 mm<sup>2</sup>



100  $\mu$ m

Zoom 20x

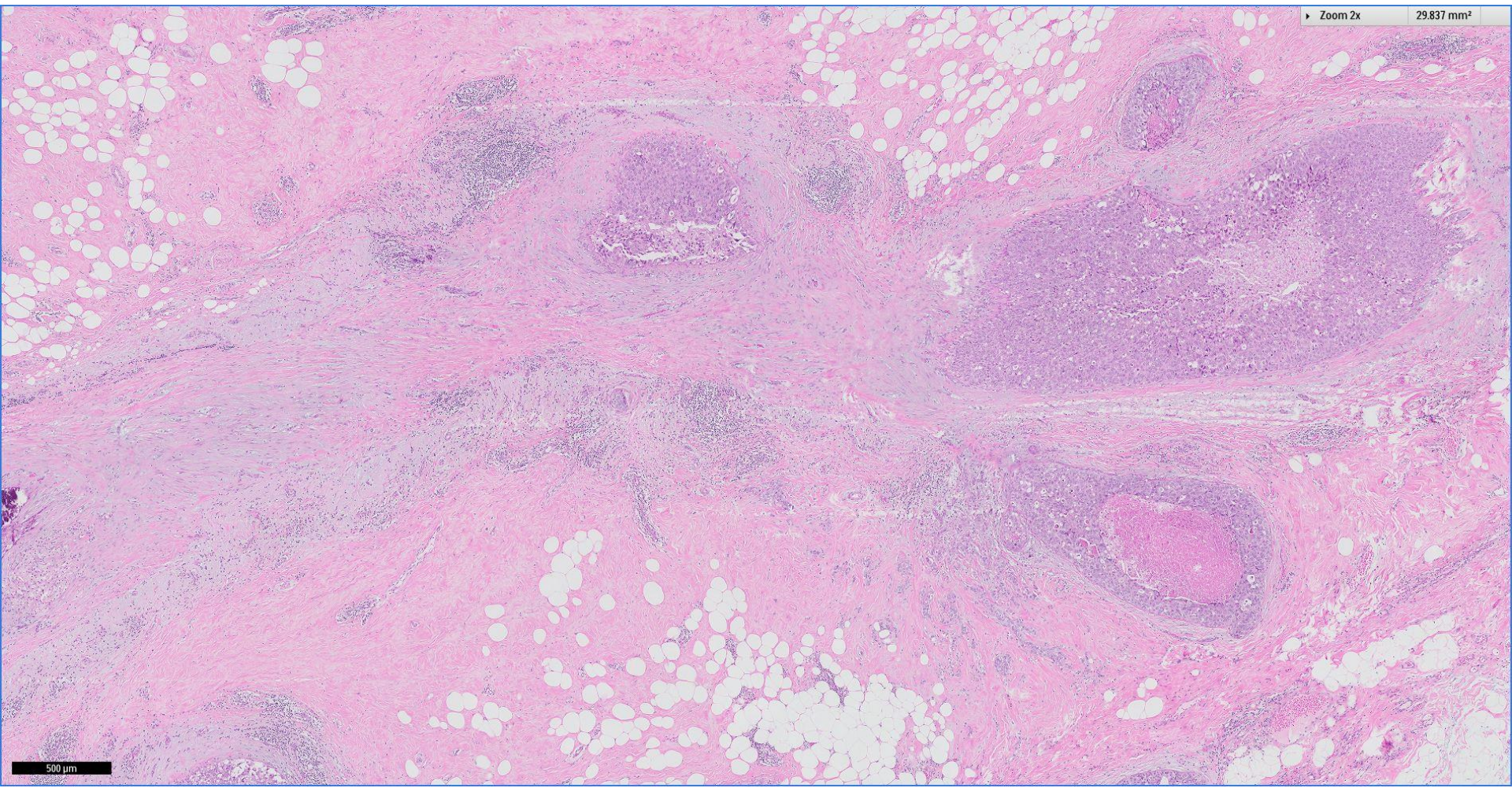
0.466 mm<sup>2</sup>



50 μm

Zoom 2x

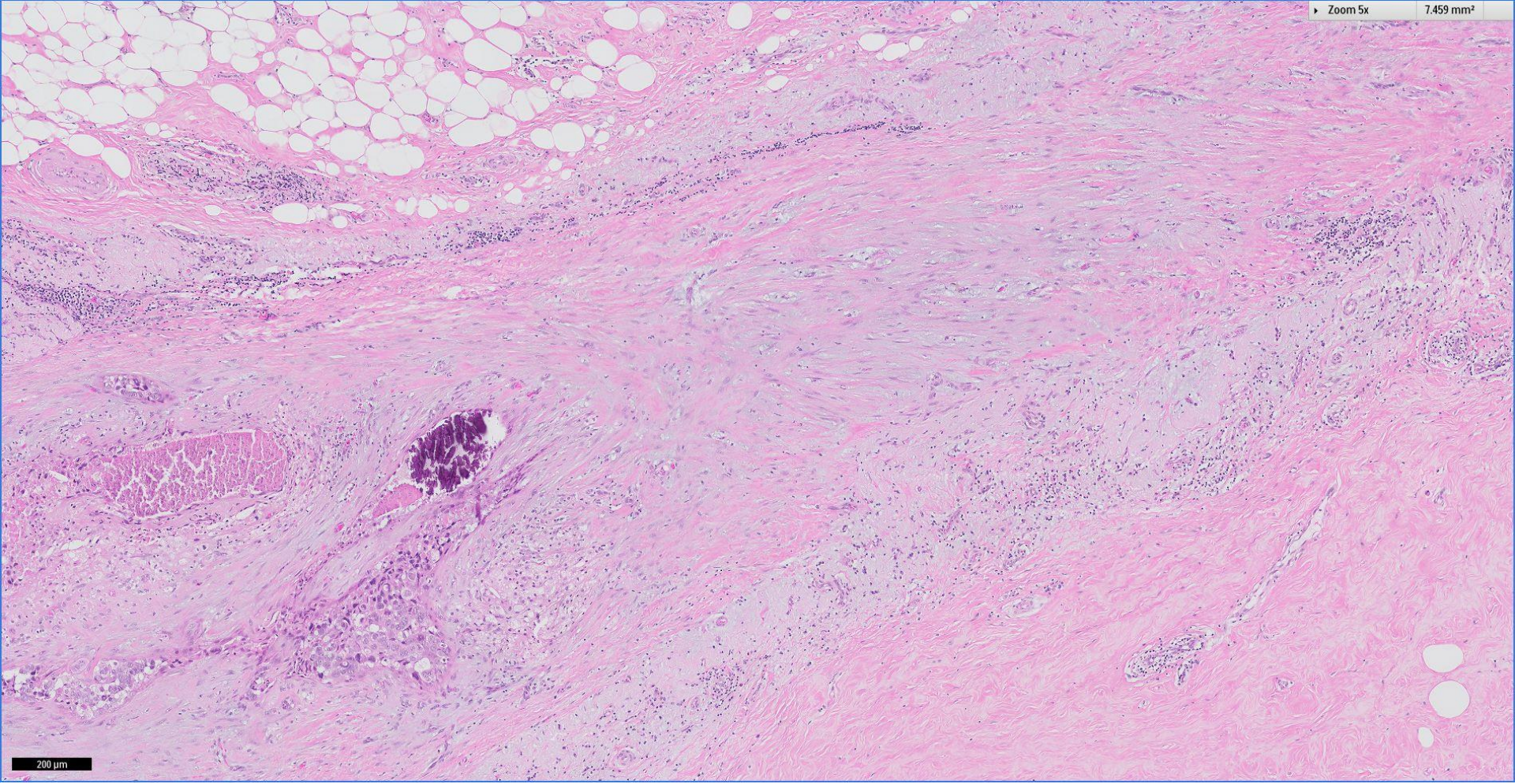
29.837 mm<sup>2</sup>



500 μm

Zoom 5x

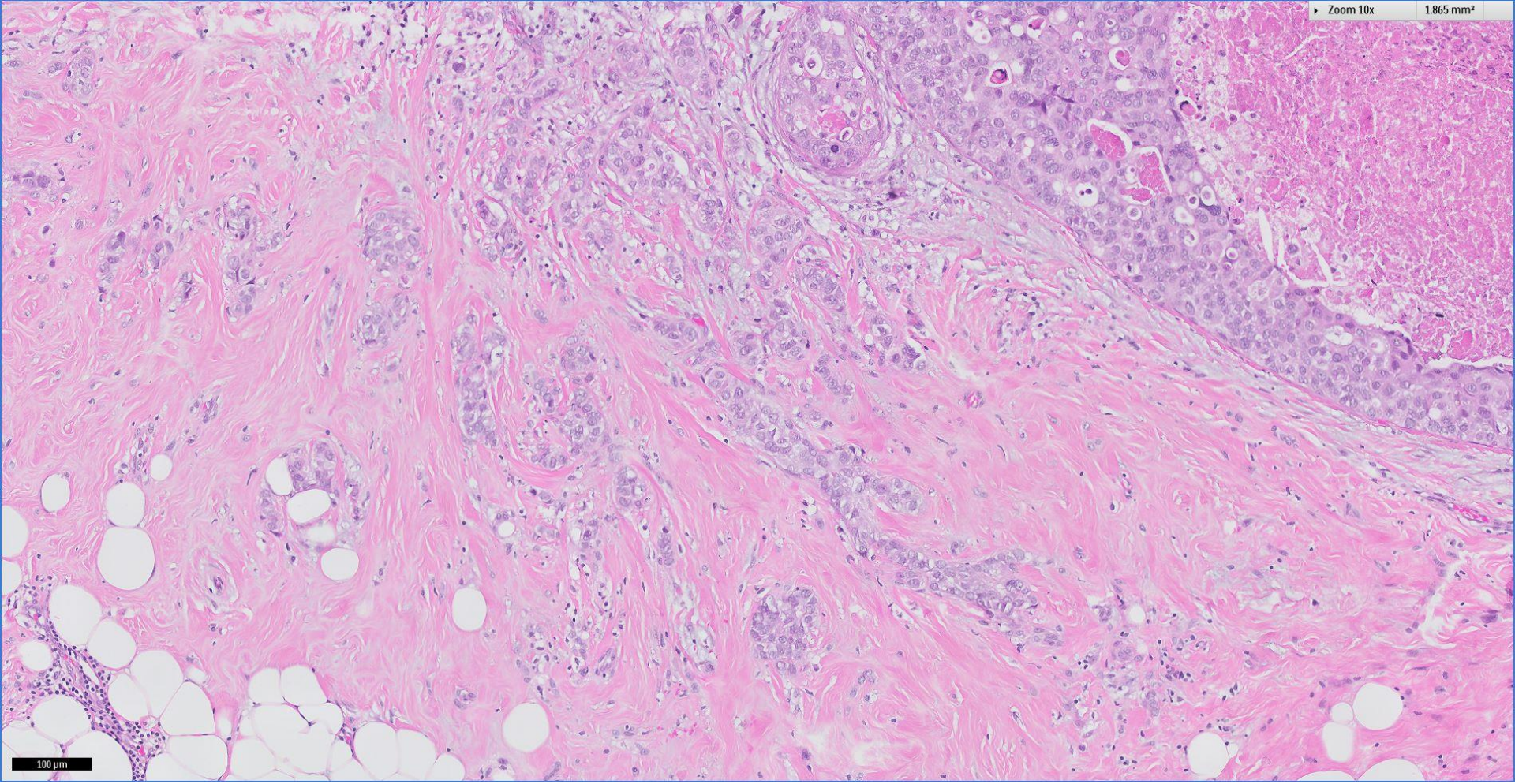
7.459 mm<sup>2</sup>



200  $\mu$ m

Zoom 10x

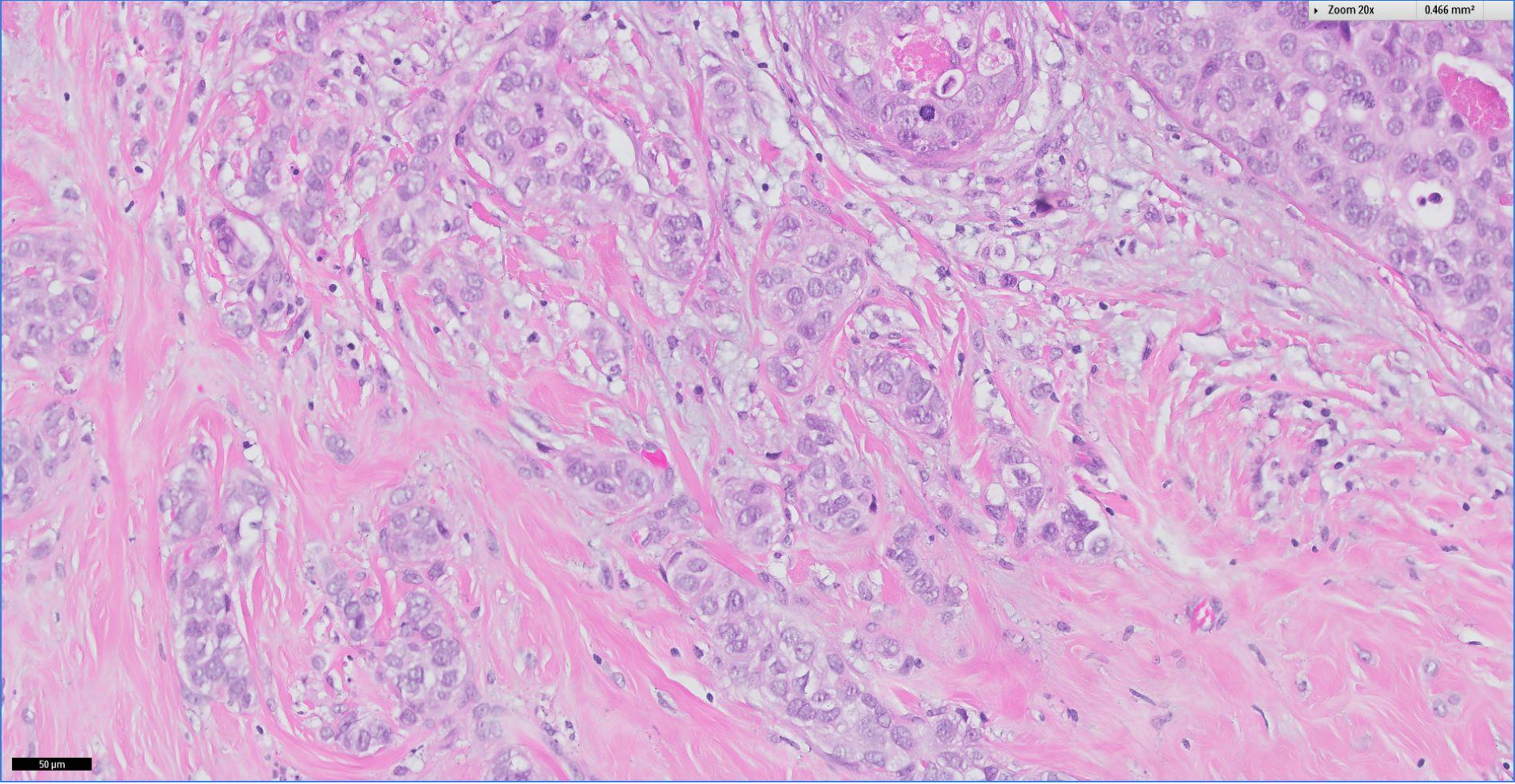
1.865 mm<sup>2</sup>



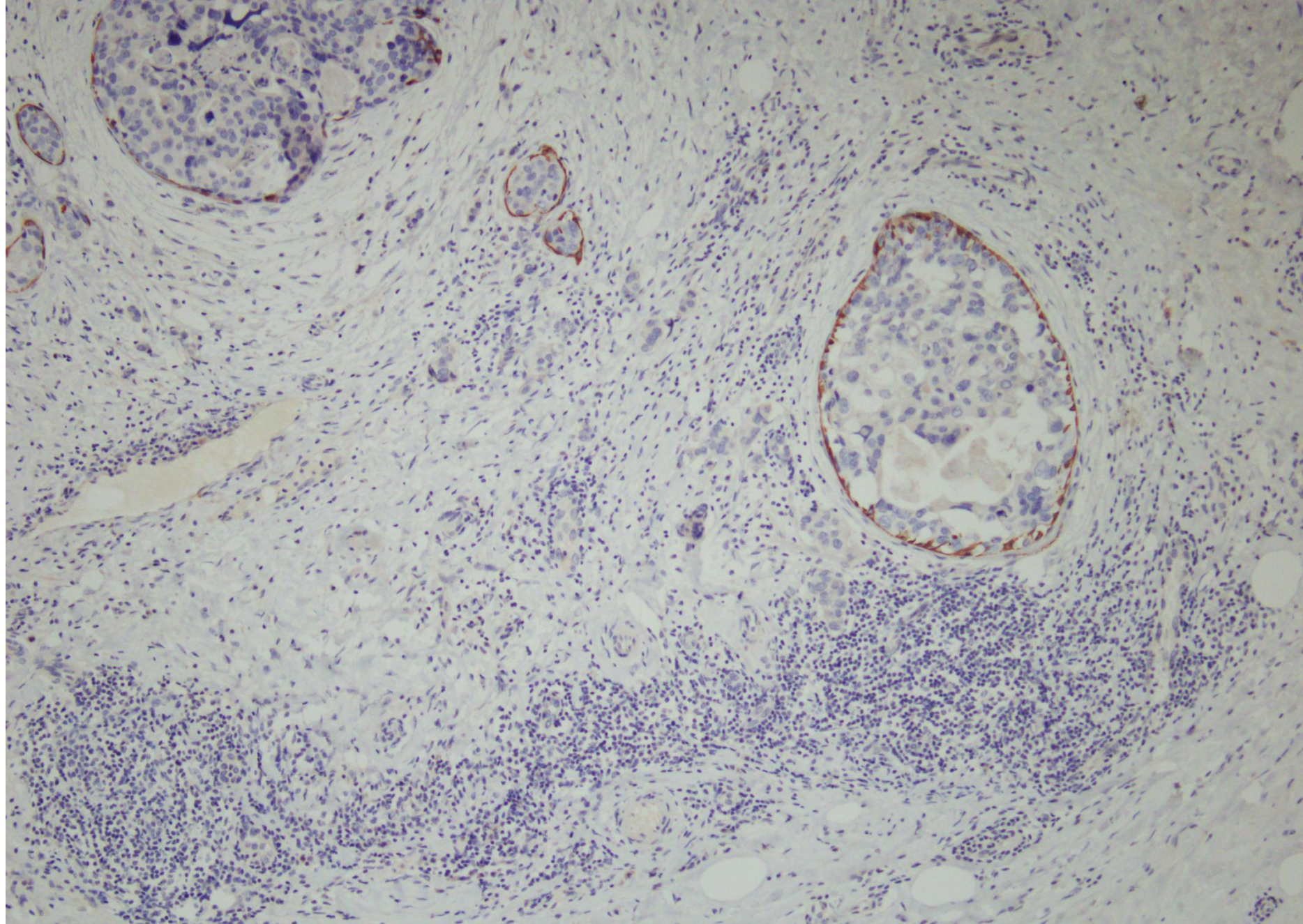
100  $\mu$ m

Zoom 20x

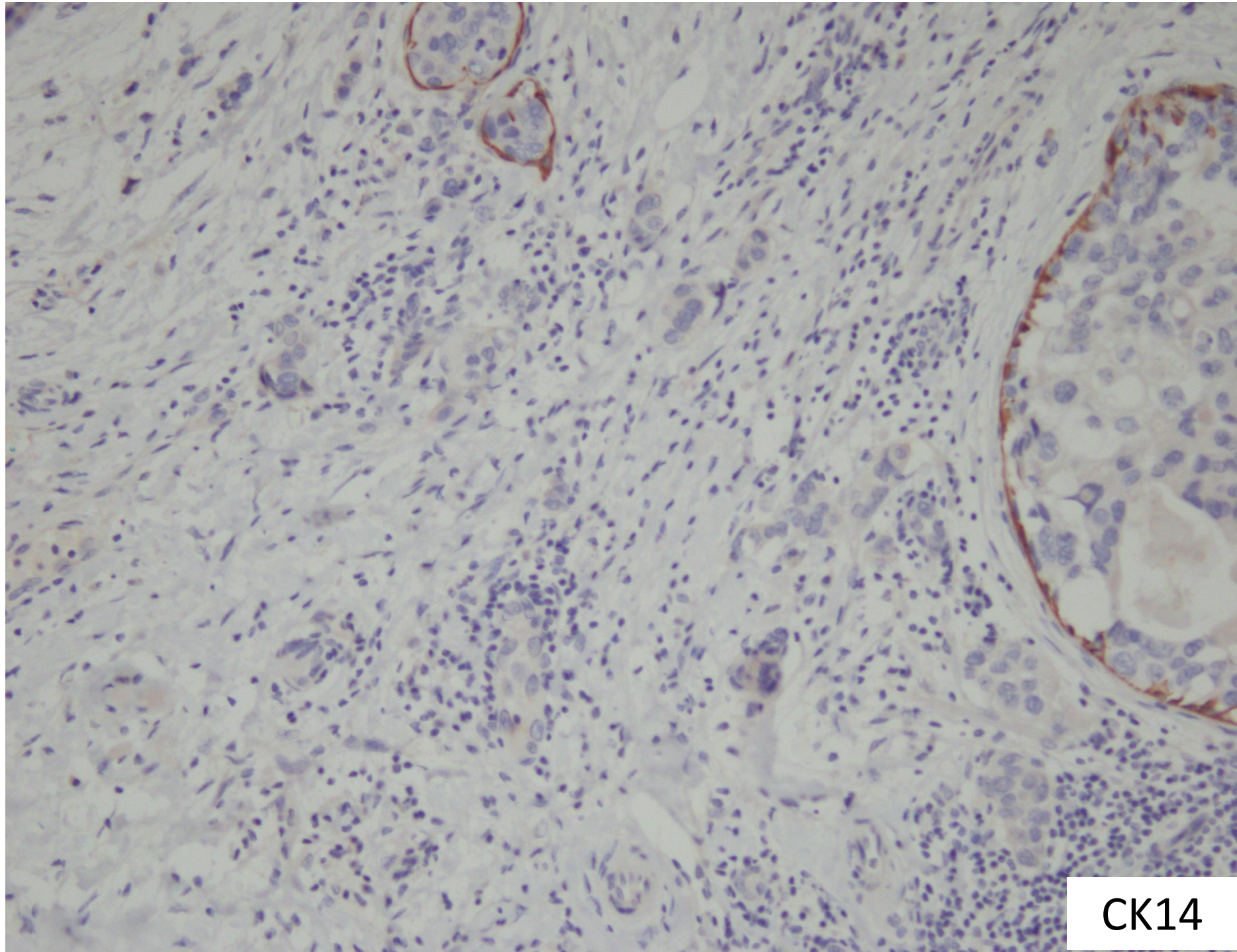
0.466 mm<sup>2</sup>



50 µm

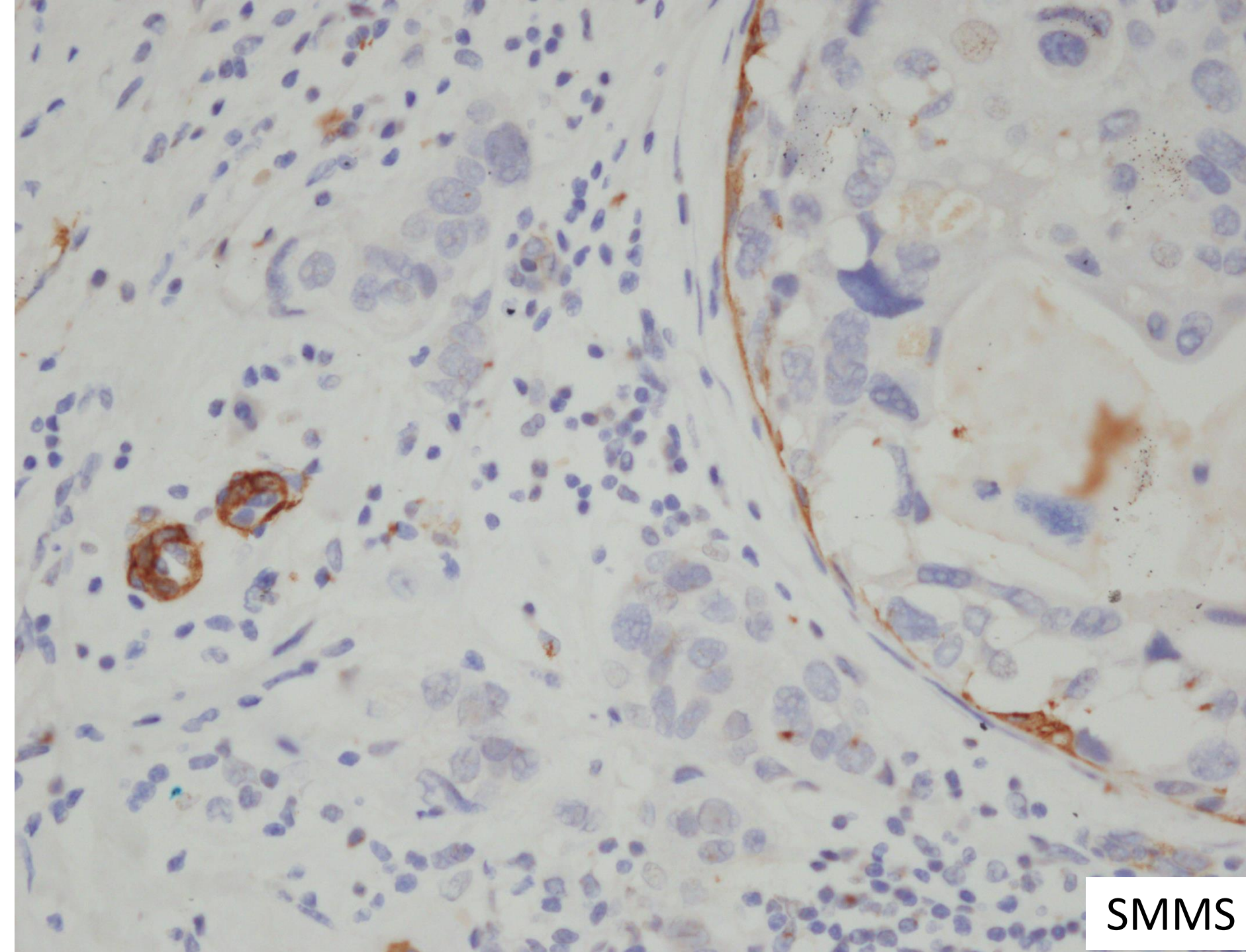


CK14

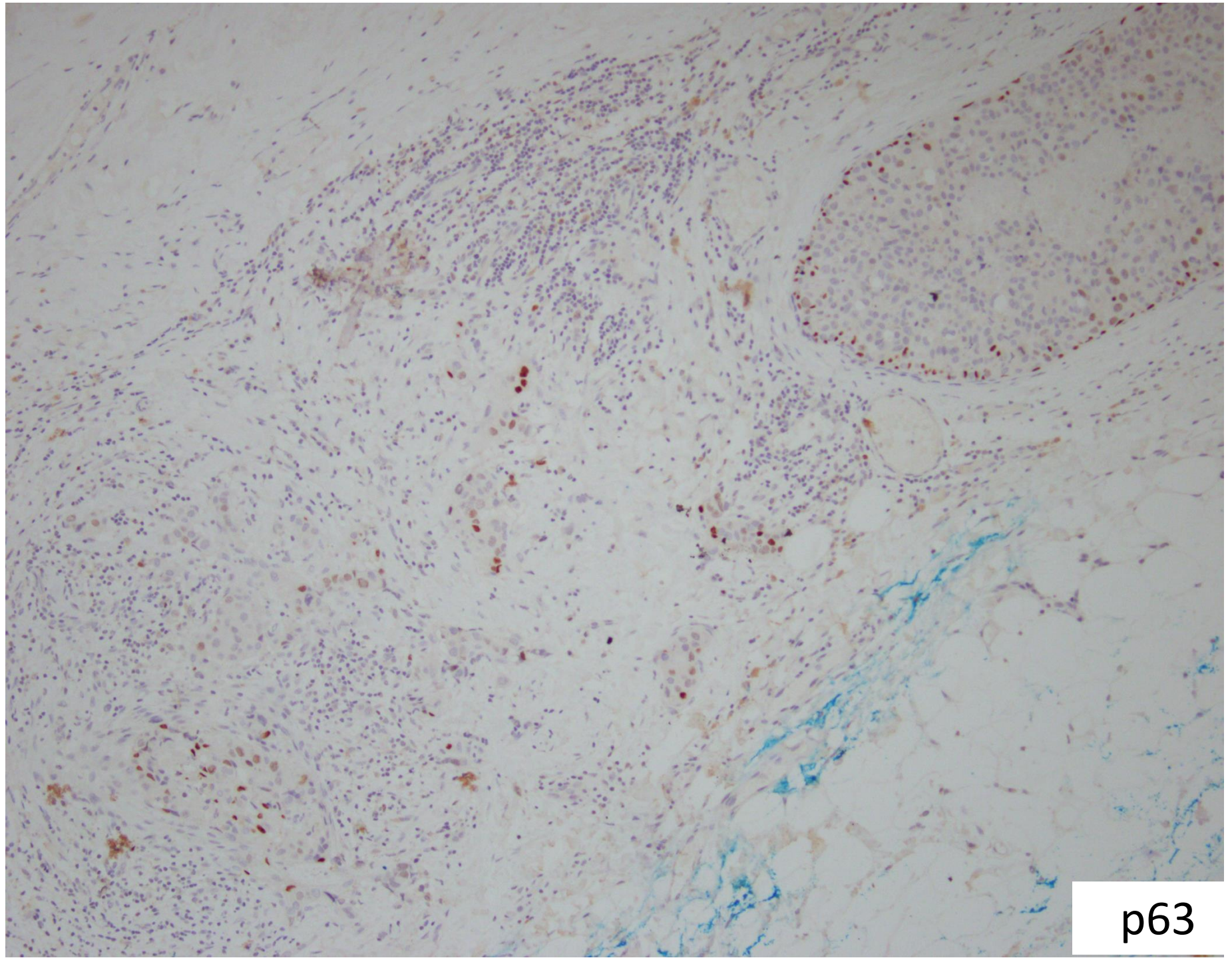


CK14

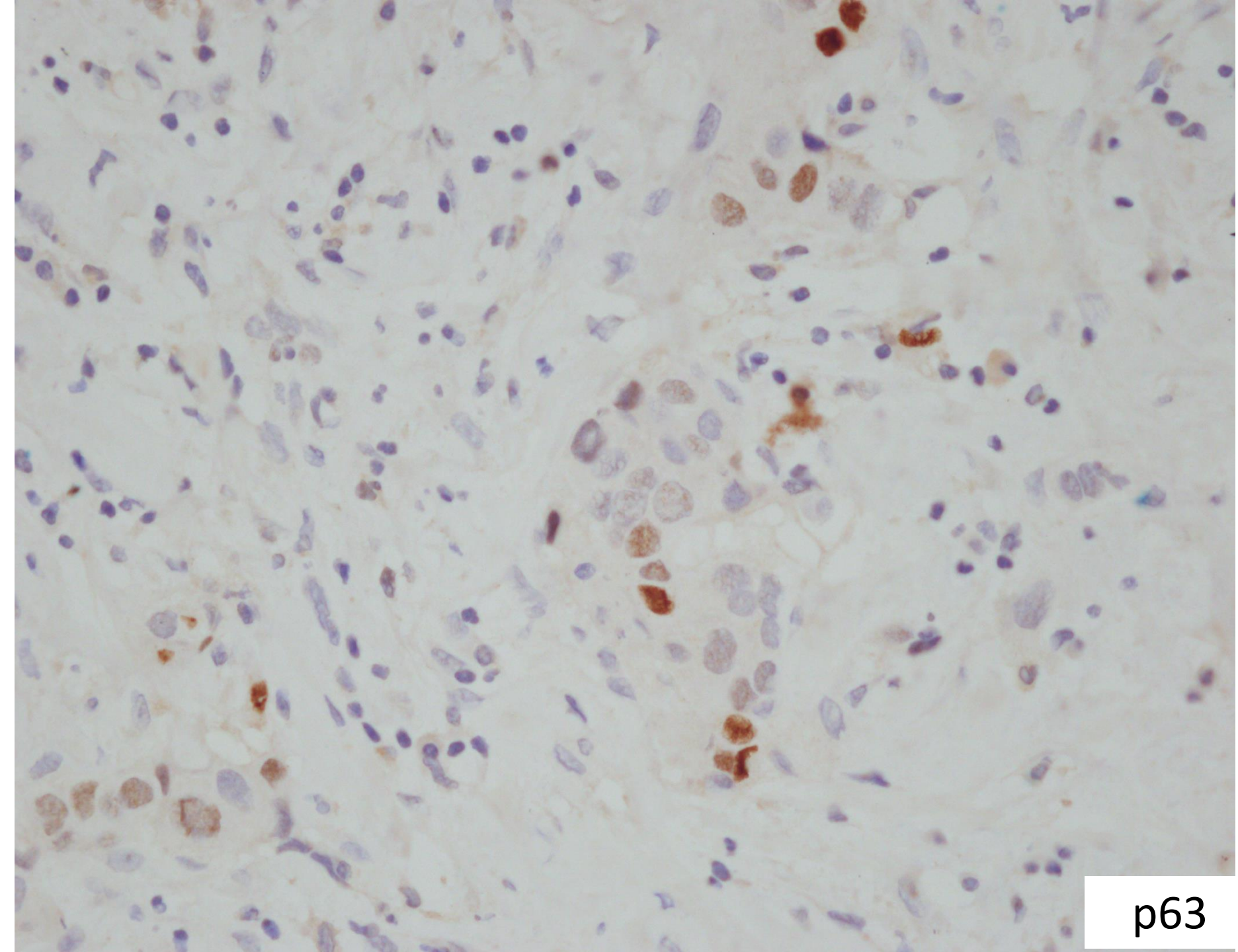




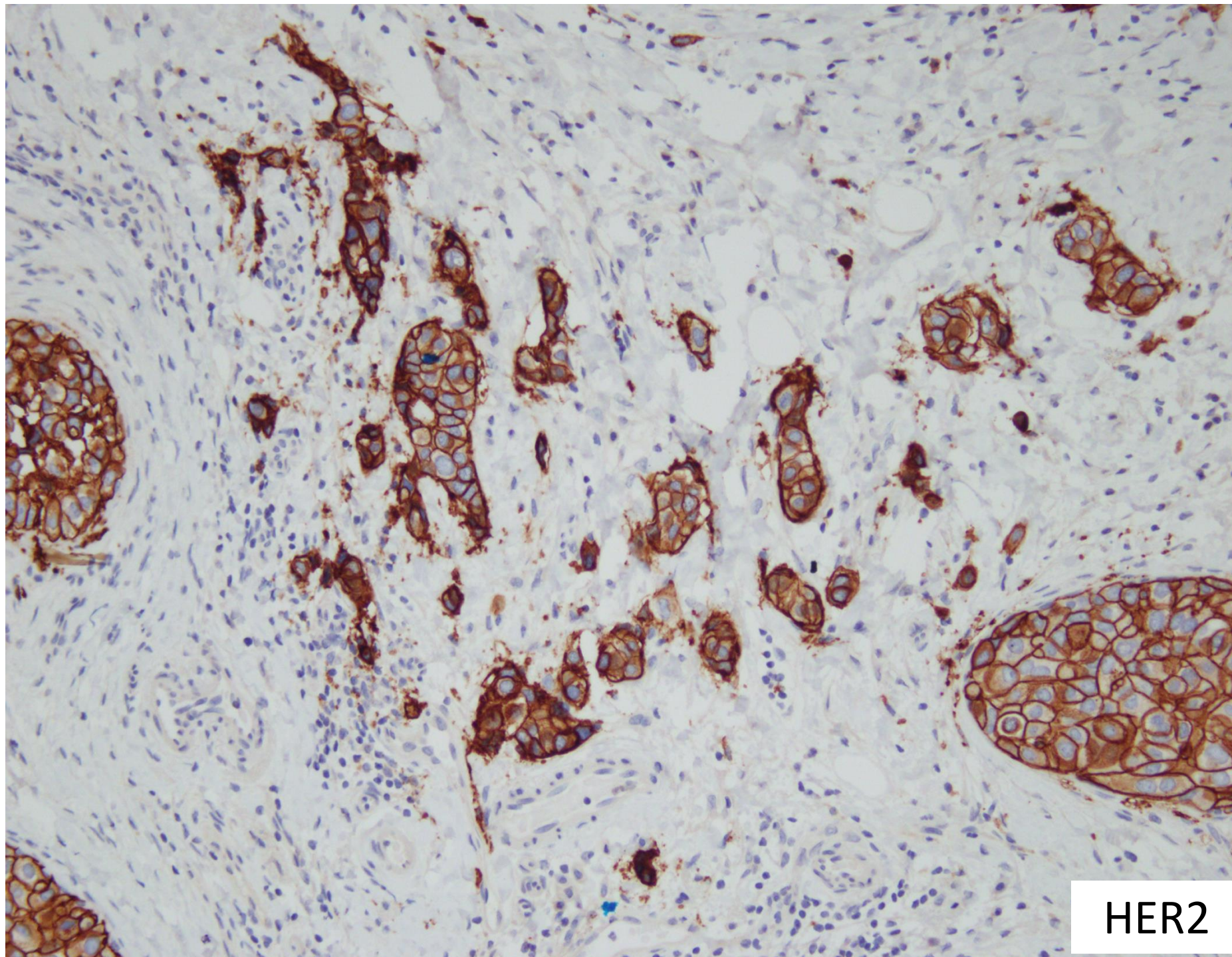
SMMS



p63



p63



HER2

Left breast, mastectomy:

*Multifocal invasive ductal carcinoma, grade 2.*

*Extensive ductal carcinoma in situ, high nuclear grade, with necrosis.*



 Breast  
Pathology  
Course 2014

