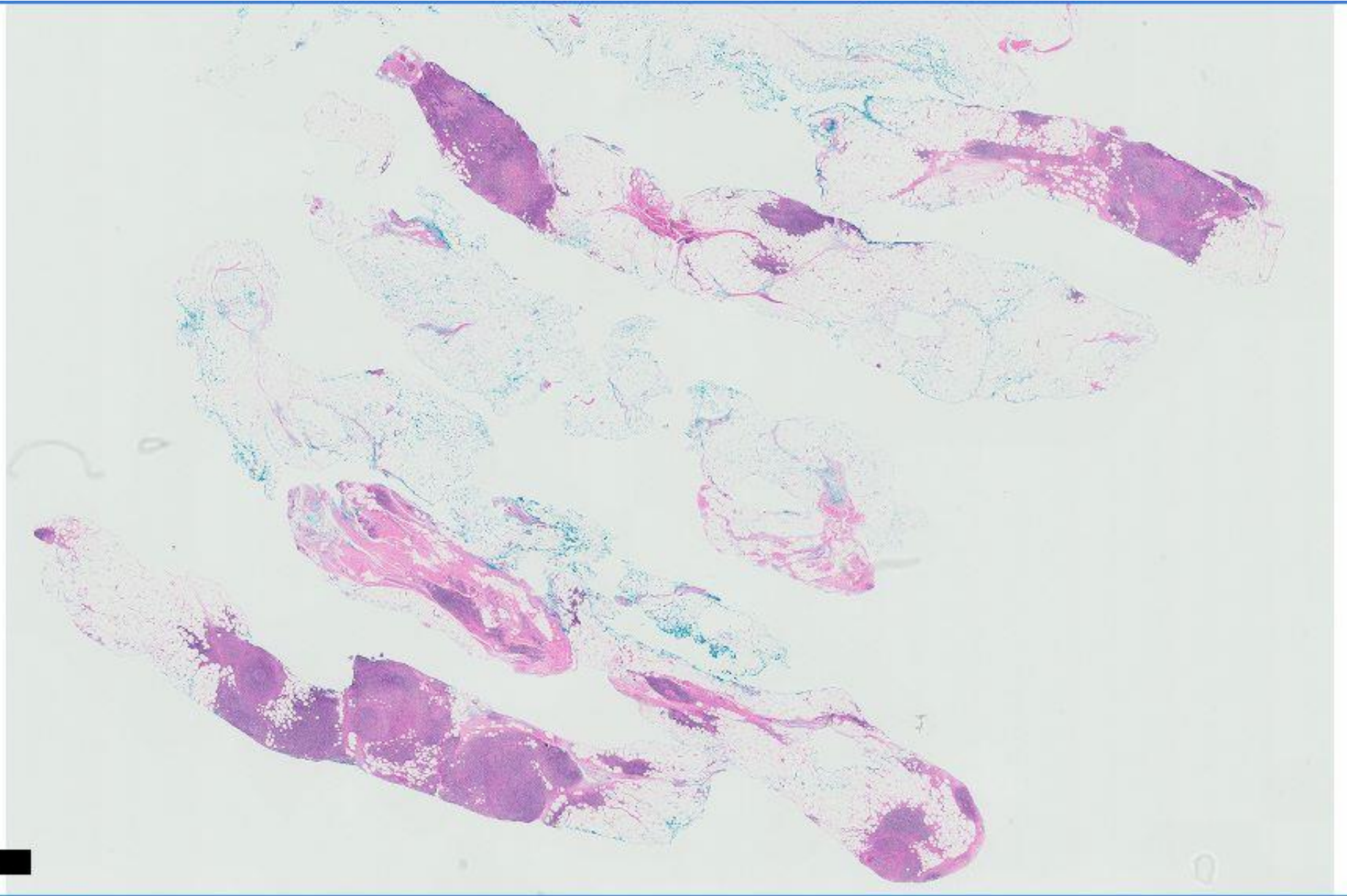


Case 42

62 year old lady, with past history of right breast lump excision 3 years ago which was reported as benign, developed a radiologically detected left breast nodule at the 10 o'clock position, associated with enlarged left axillary lymph nodes.

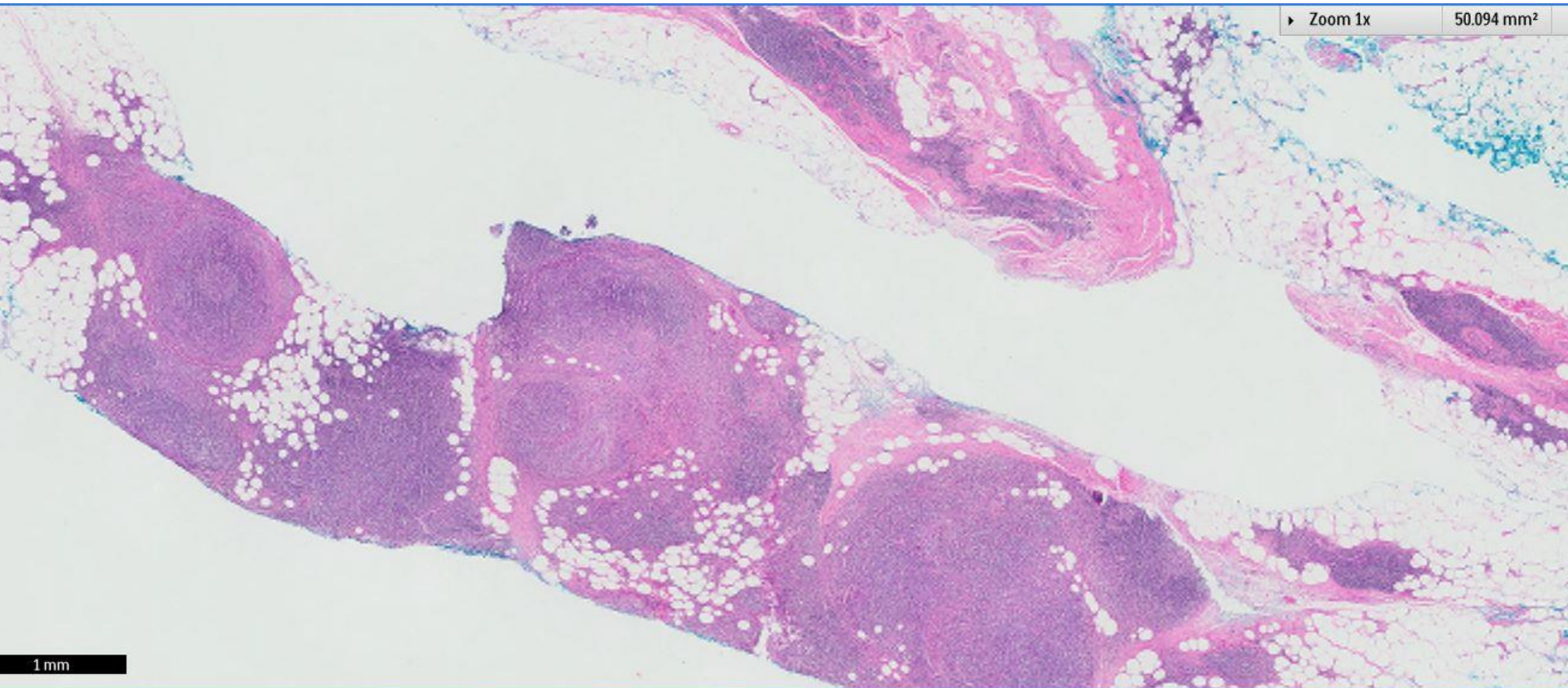
Ultrasound guided core biopsies were performed for both the left breast nodule and the left axillary lymph nodes. Section is from the core biopsy of the left breast nodule.





▶ Zoom 1x

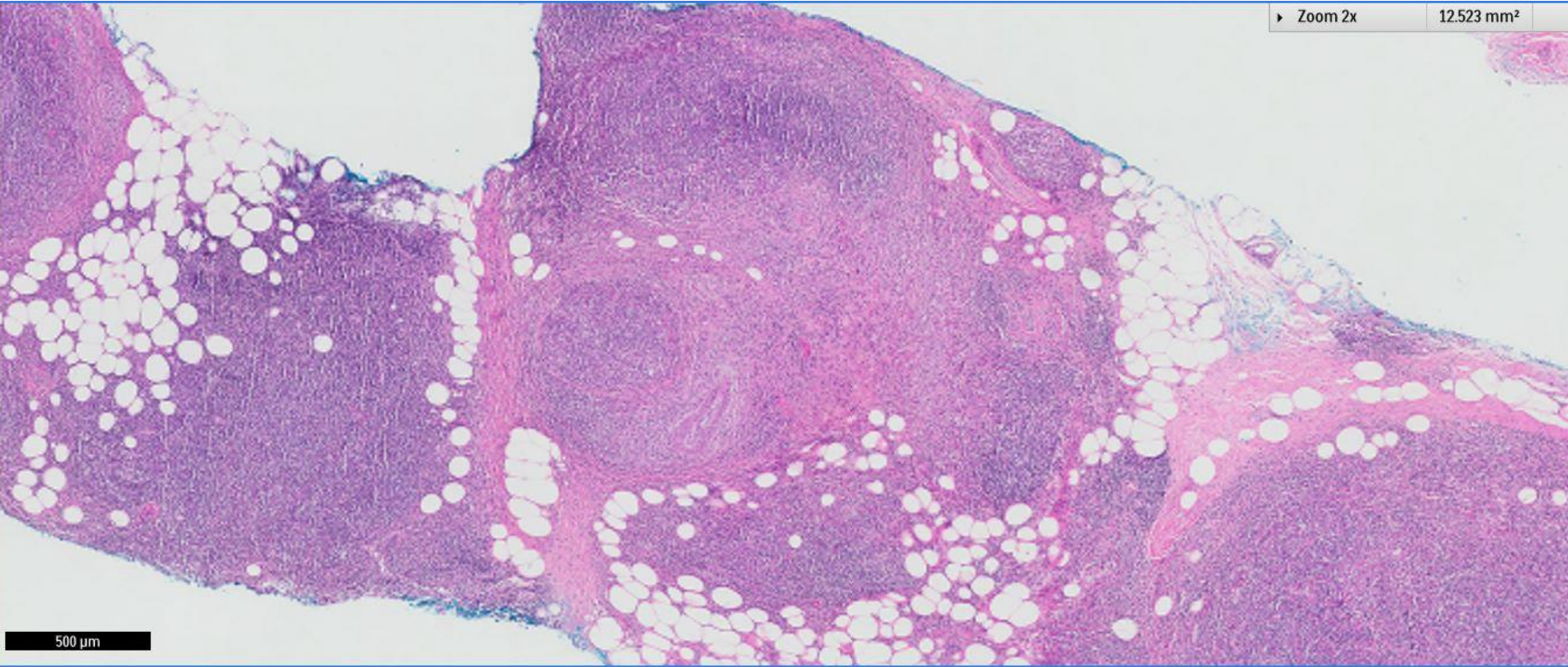
50.094 mm²



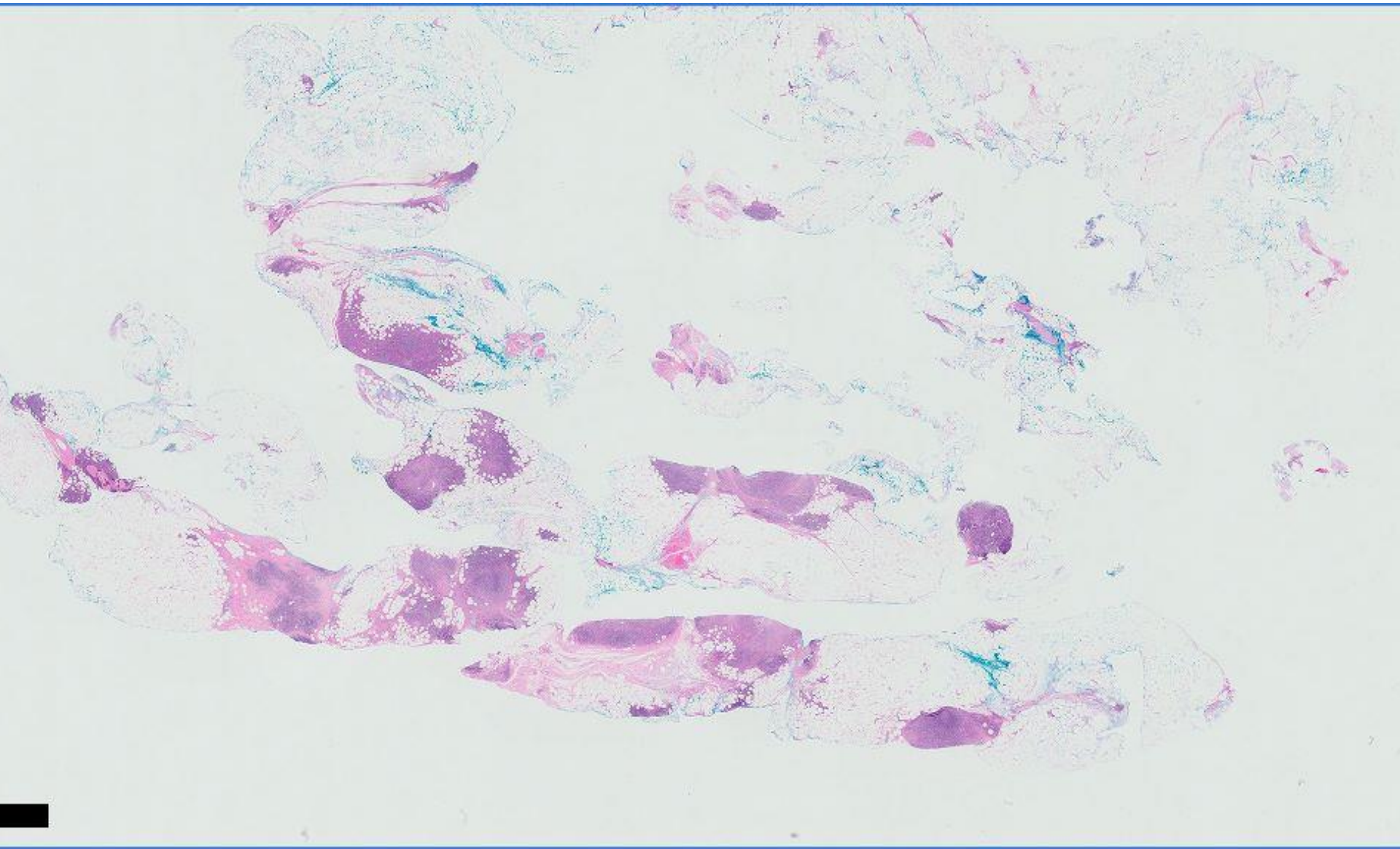
1 mm

▶ Zoom 2x

12.523 mm²

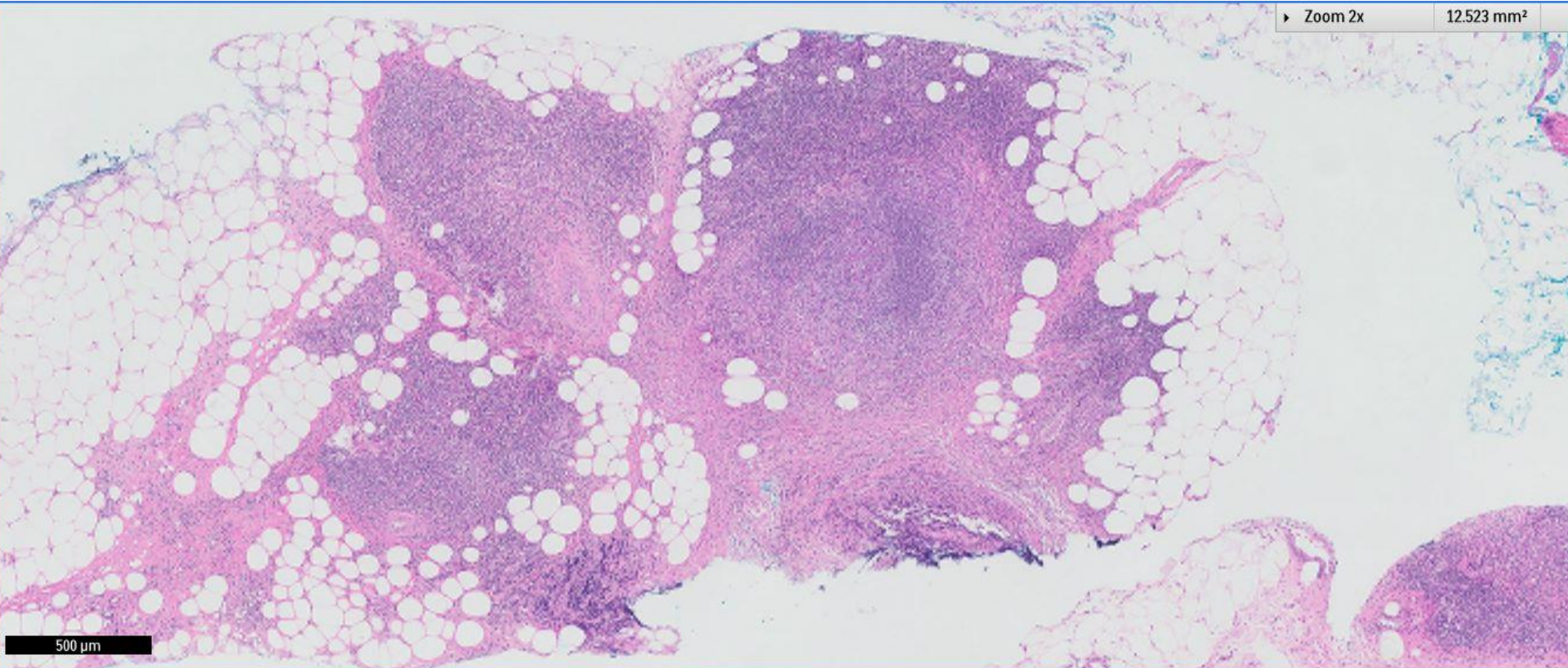


500 μ m

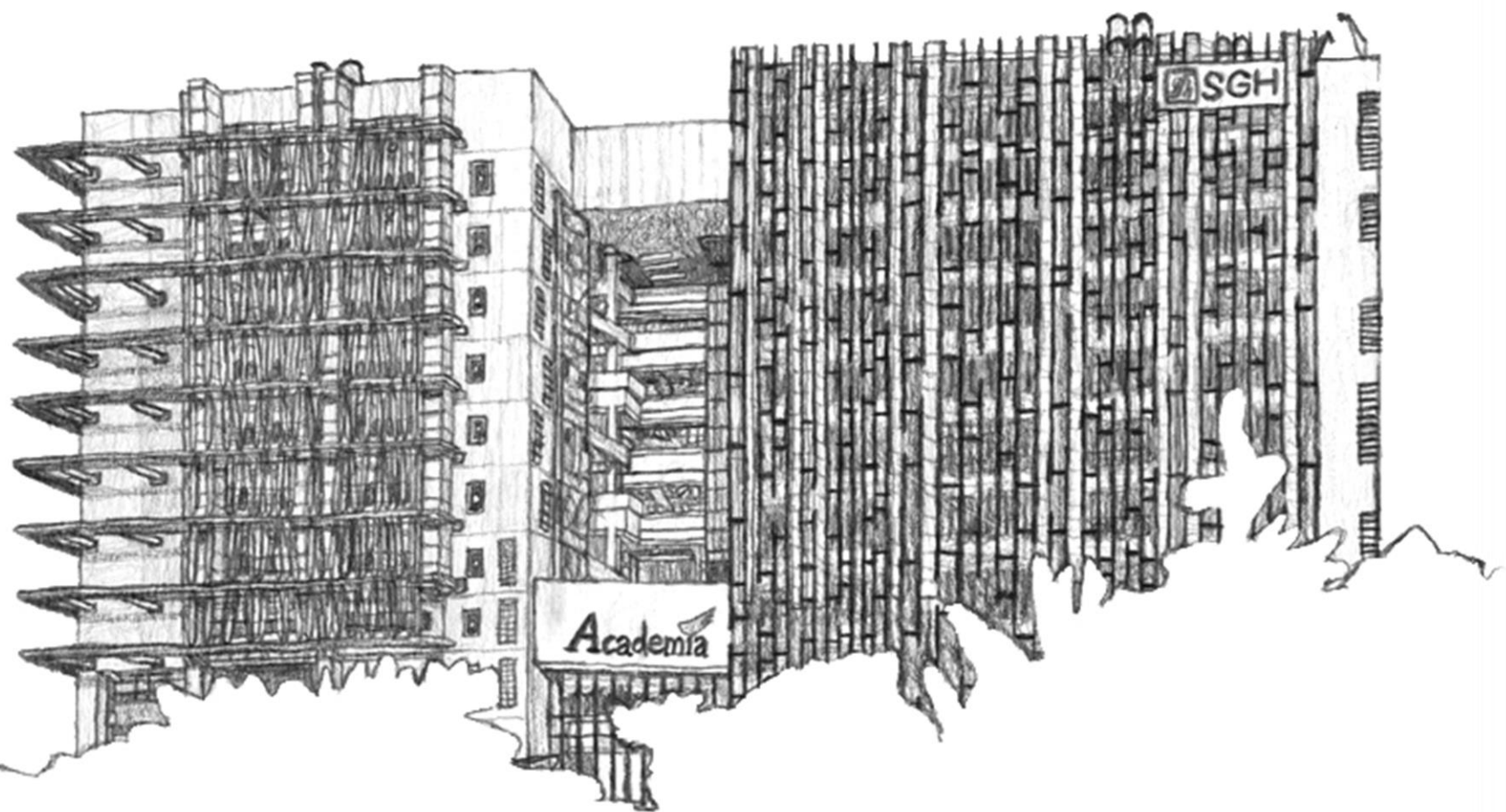


▶ Zoom 2x

12.523 mm²



500 μm



THE ACADEMIA,
SINGAPORE GENERAL HOSPITAL

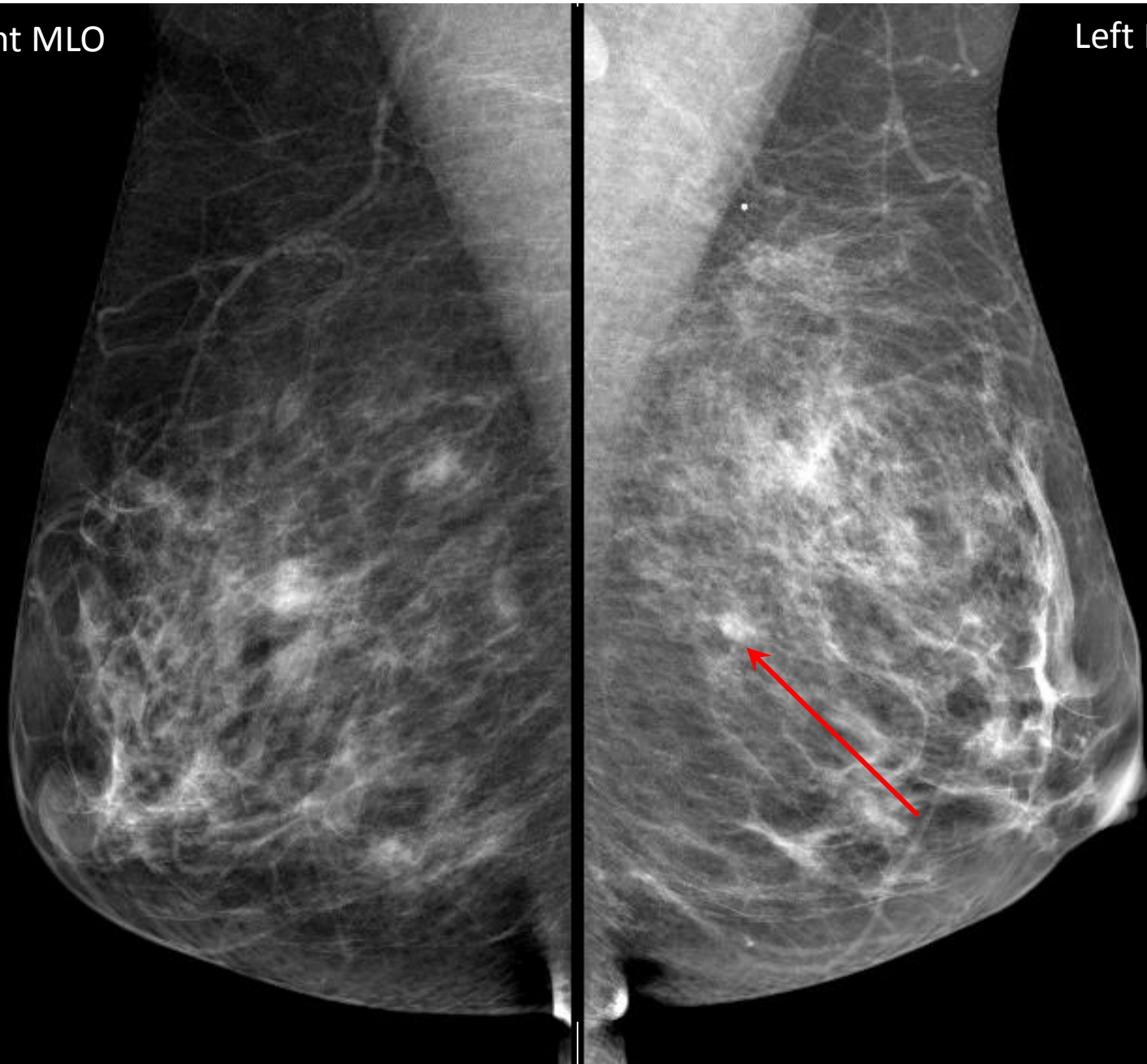
09.05.2014

Handwritten signature

July 2013

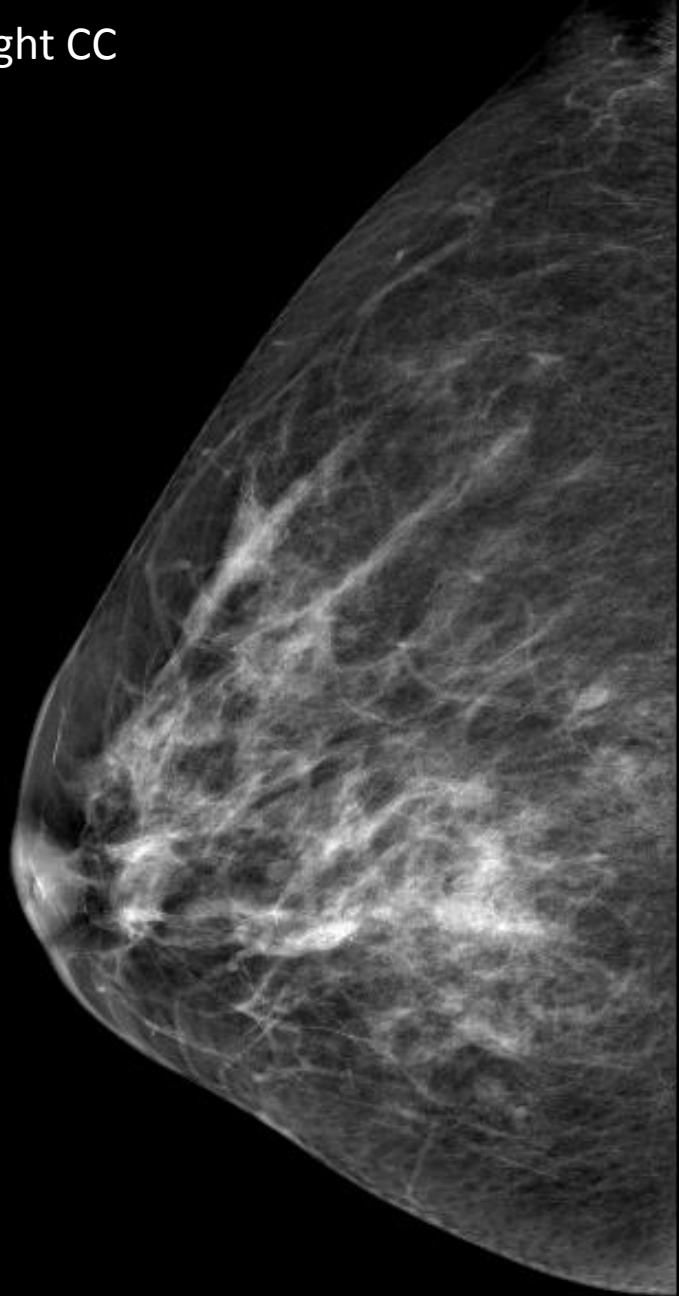
Right MLO

Left MLO

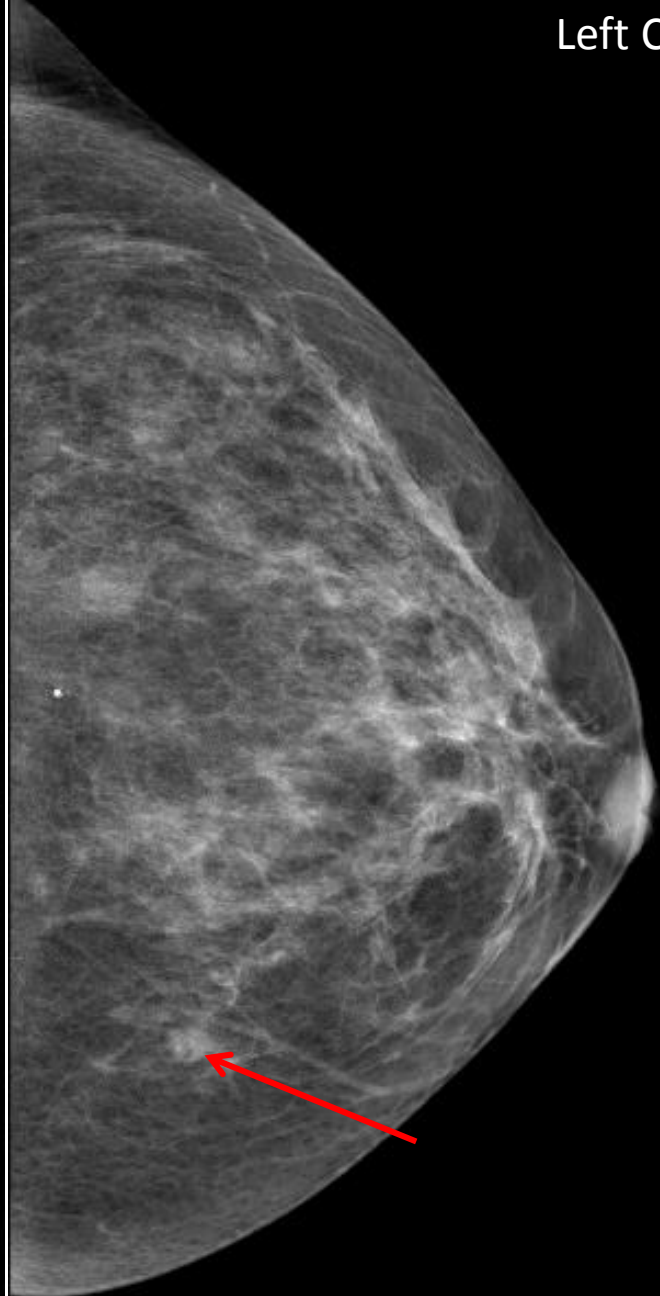


July 2013

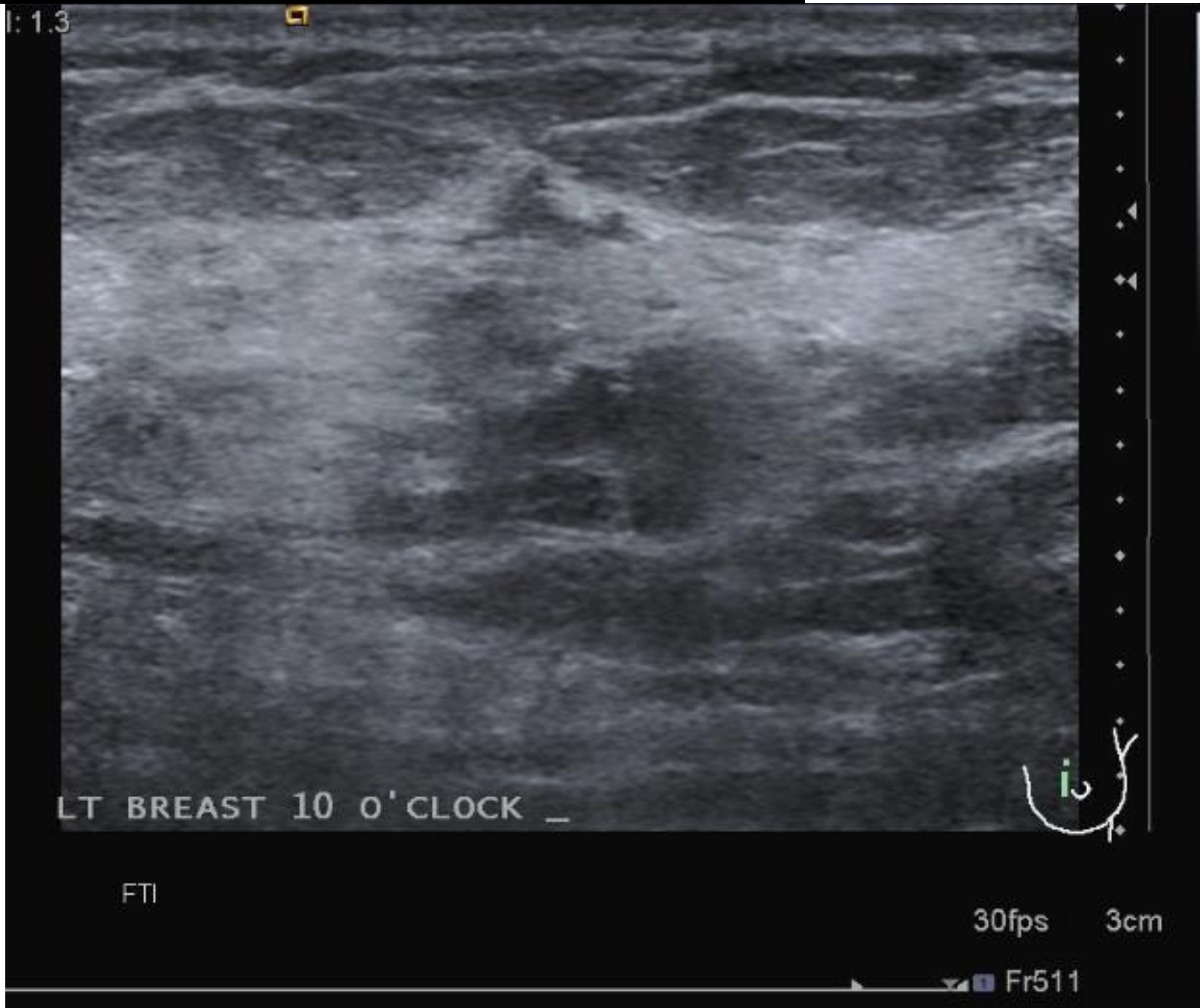
Right CC



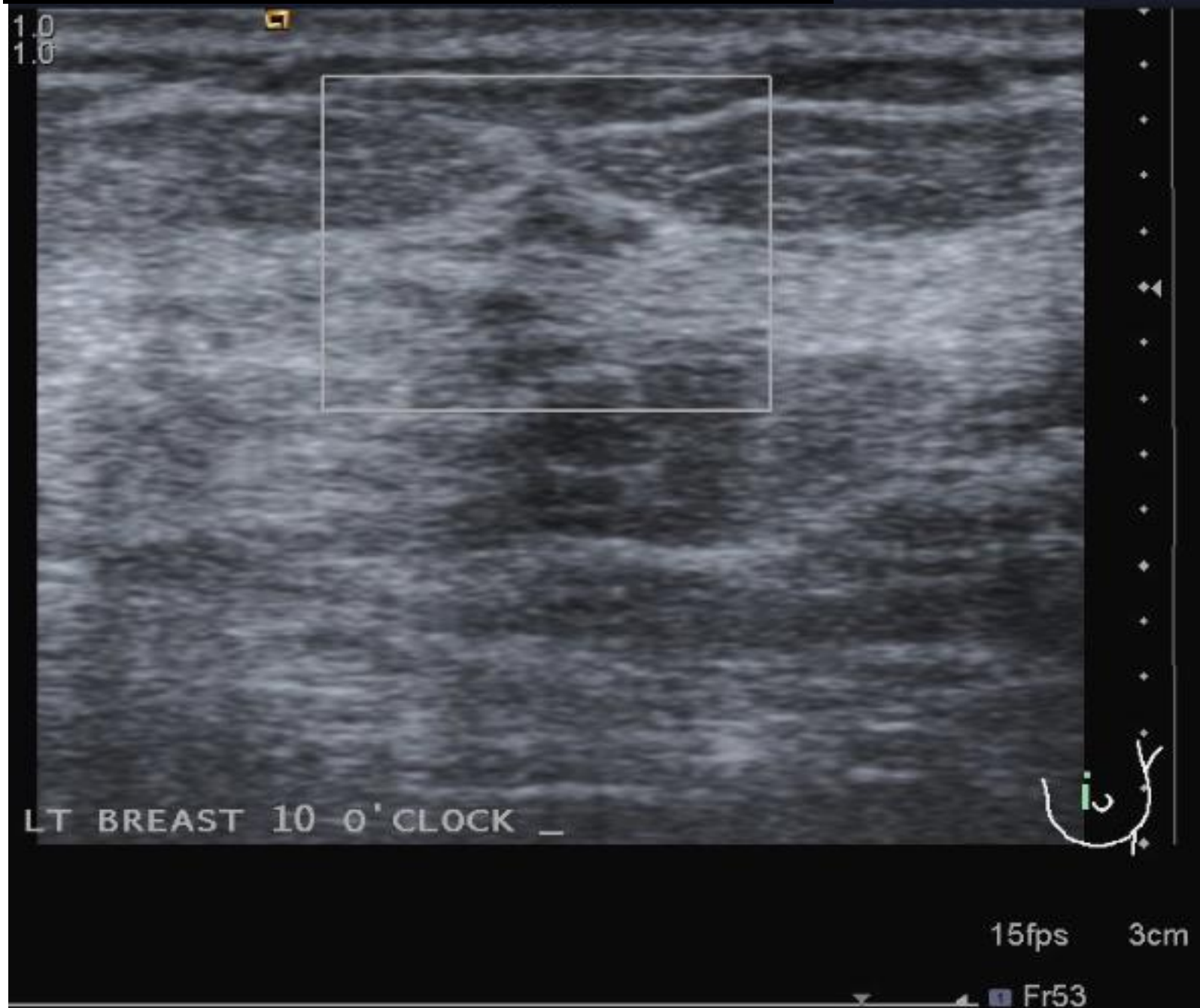
Left CC



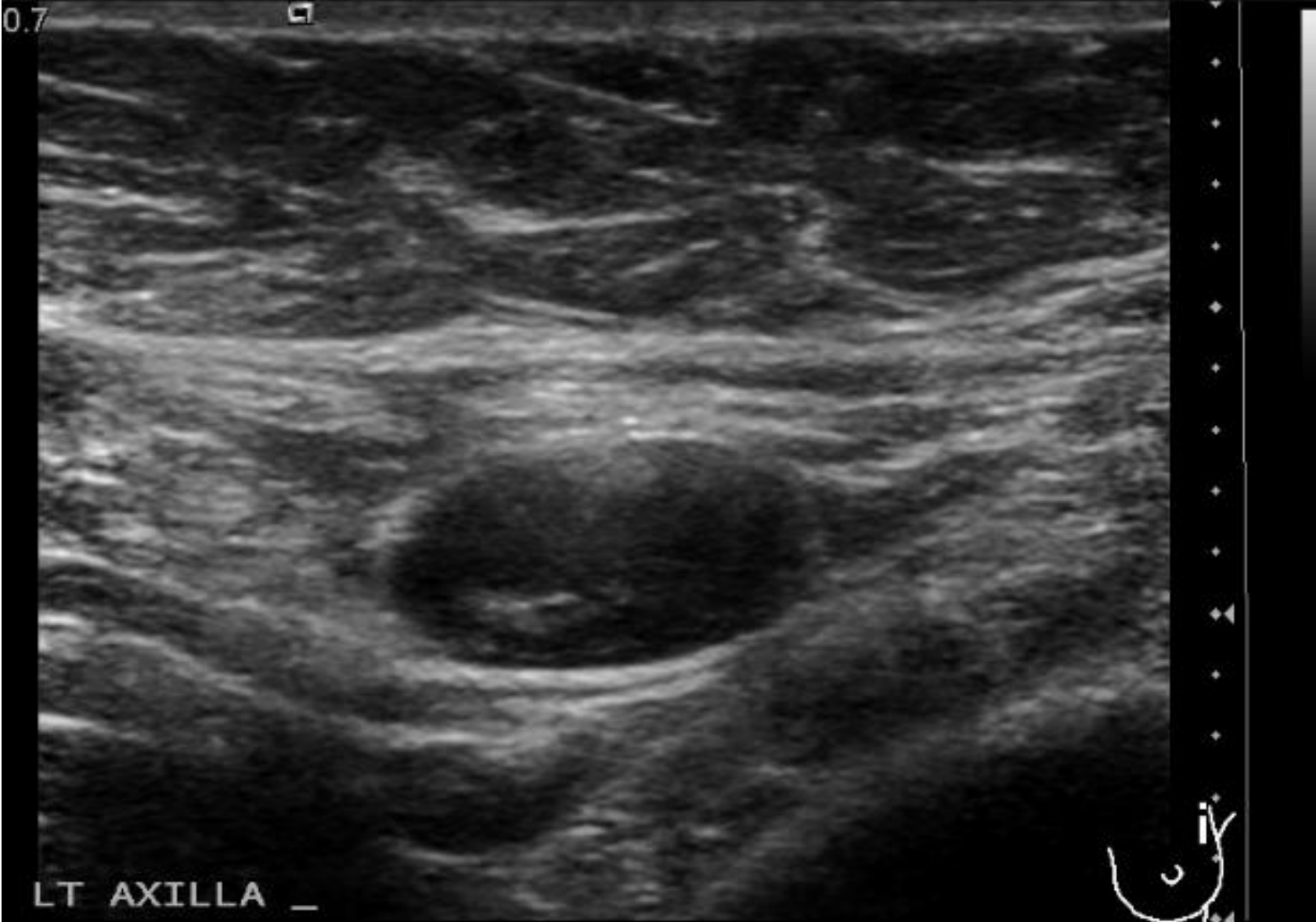
July 2013, left breast ultrasound



July 2013, left breast ultrasound



July 2013, left axillary ultrasound



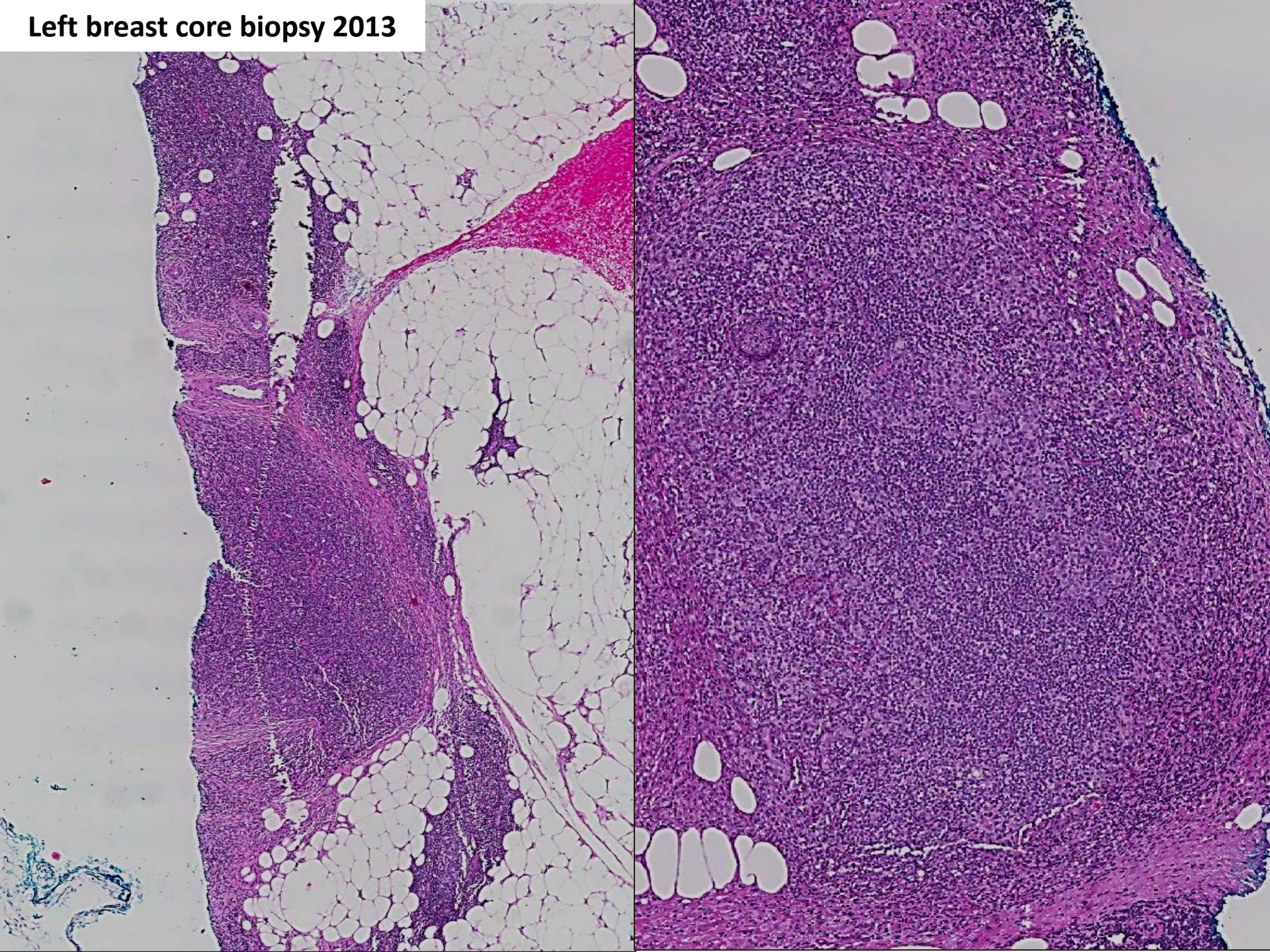
LT AXILLA _

FTI

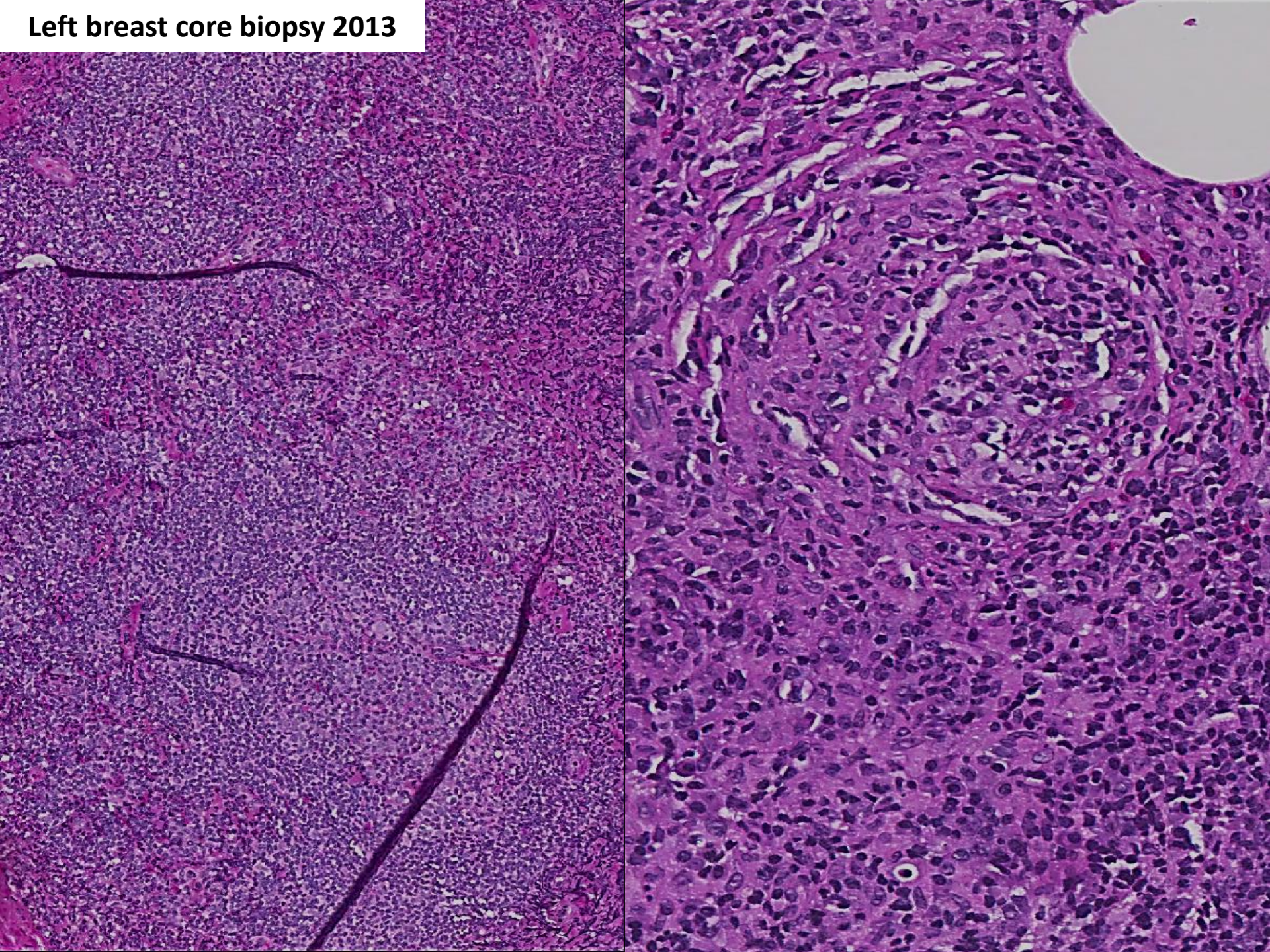
22fps

3cm

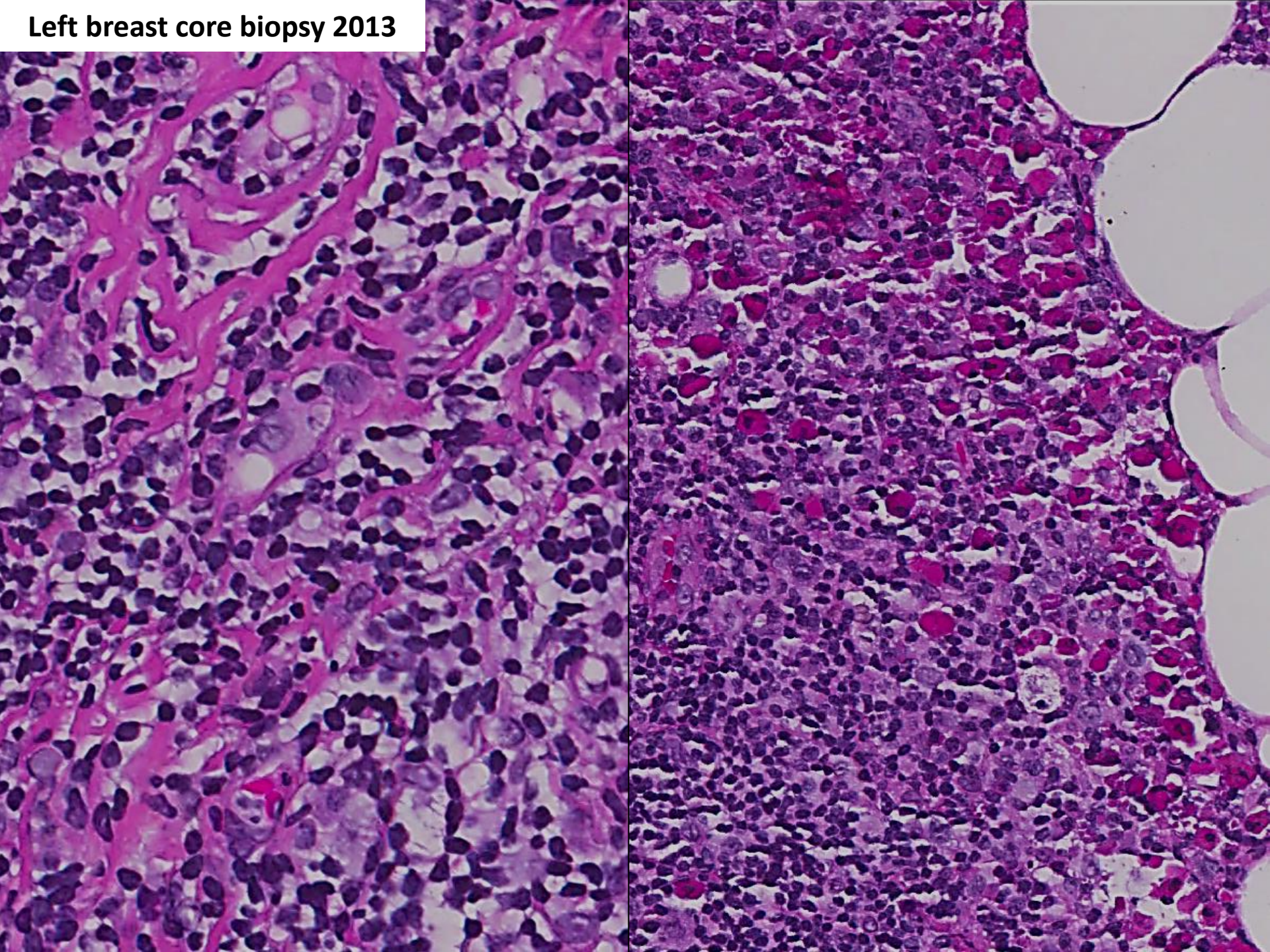
Left breast core biopsy 2013



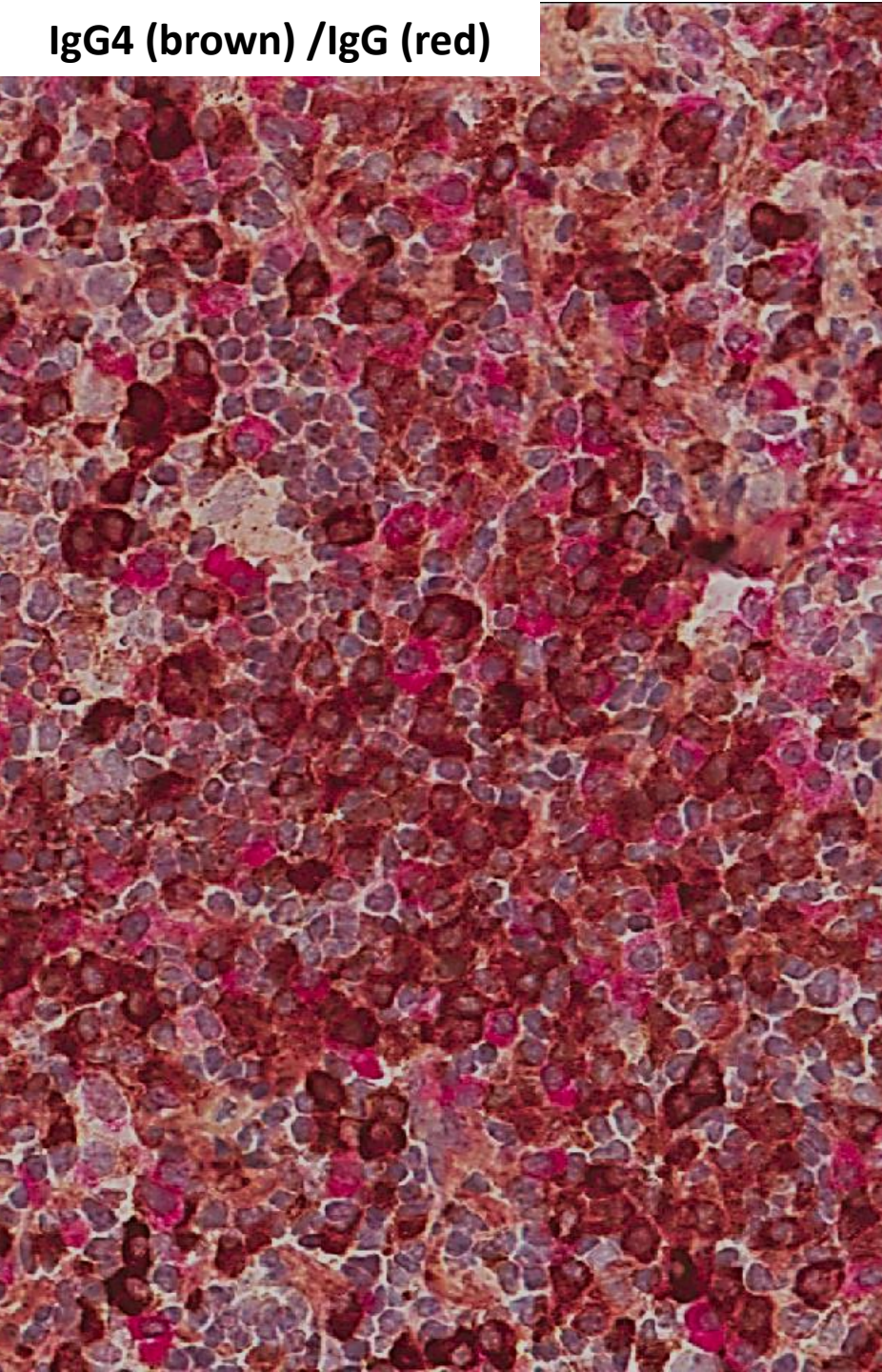
Left breast core biopsy 2013



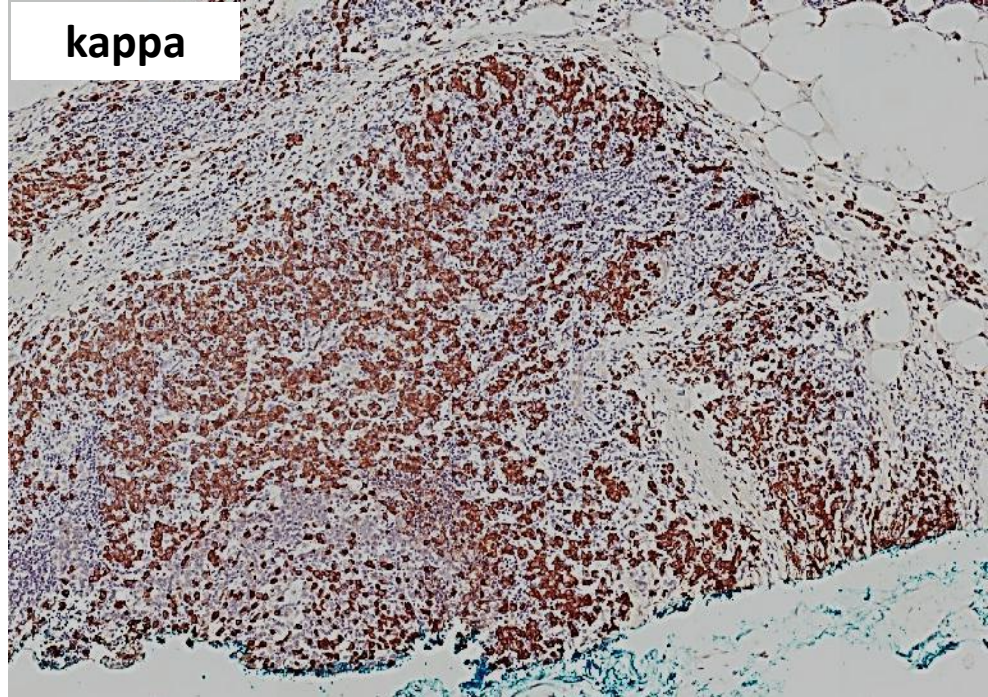
Left breast core biopsy 2013



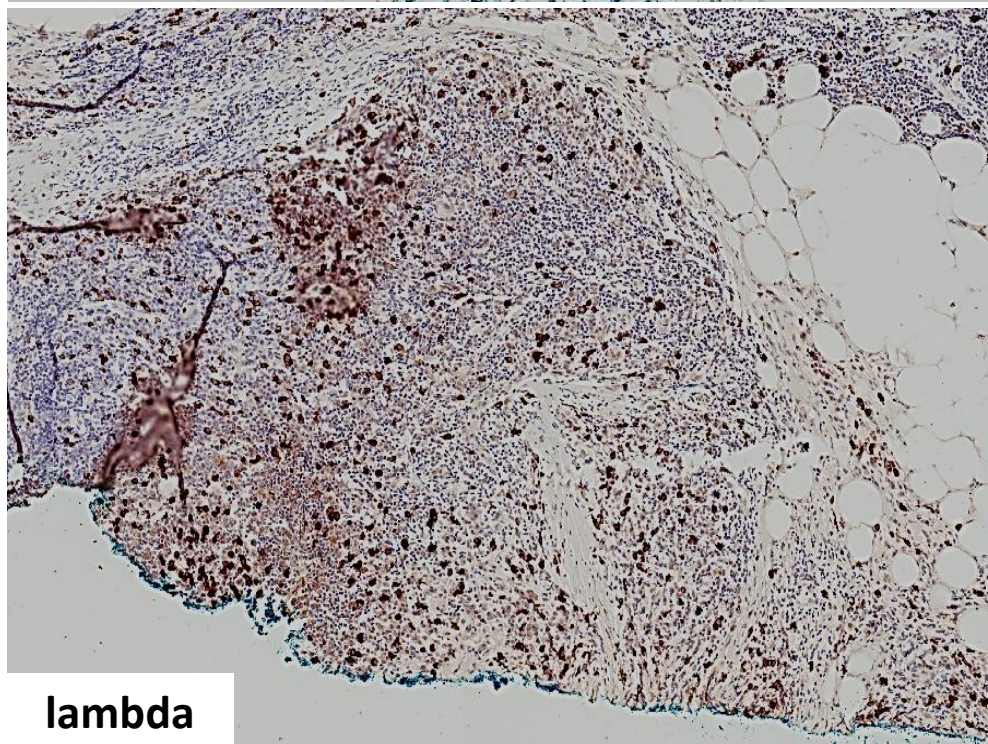
IgG4 (brown) / IgG (red)



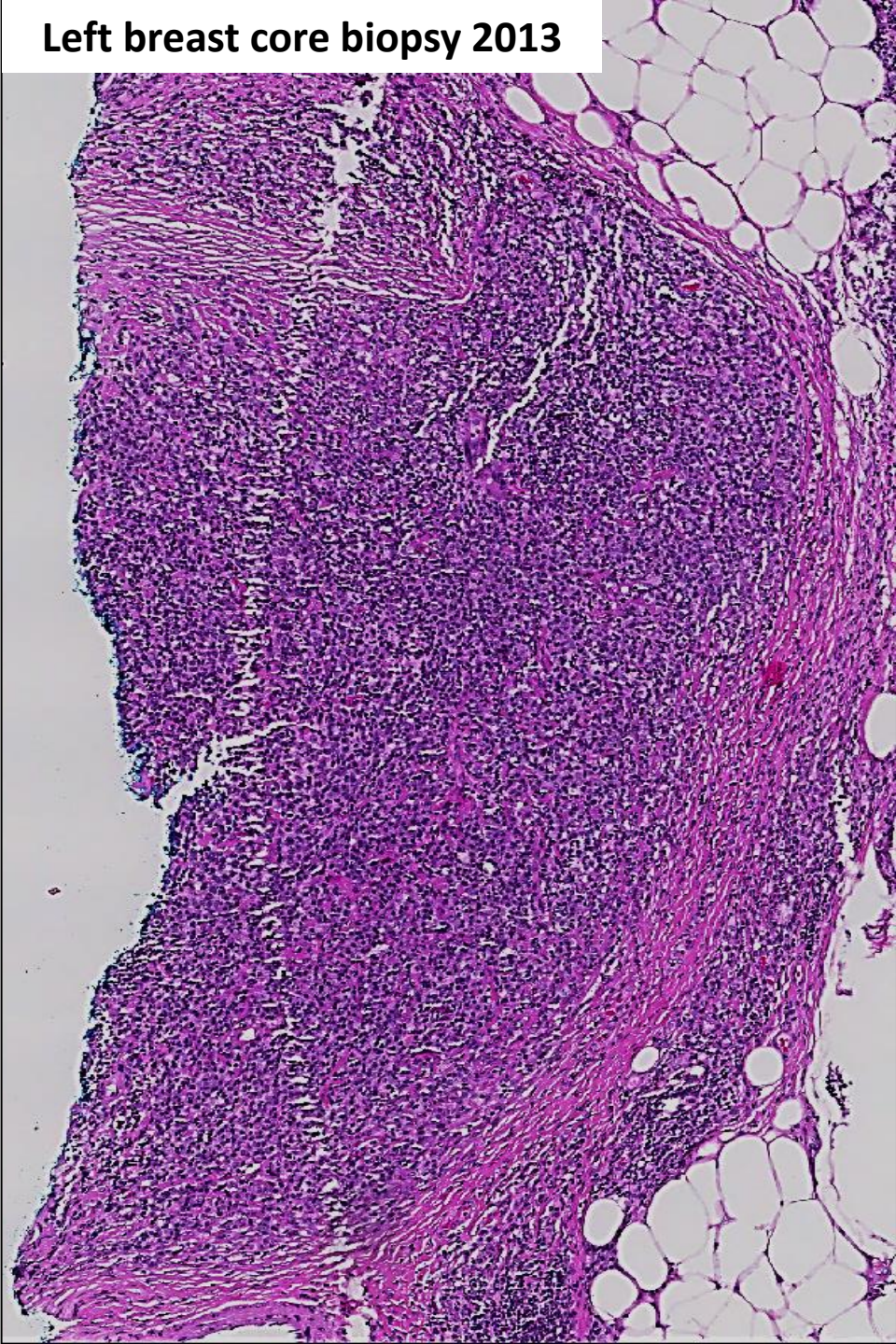
kappa



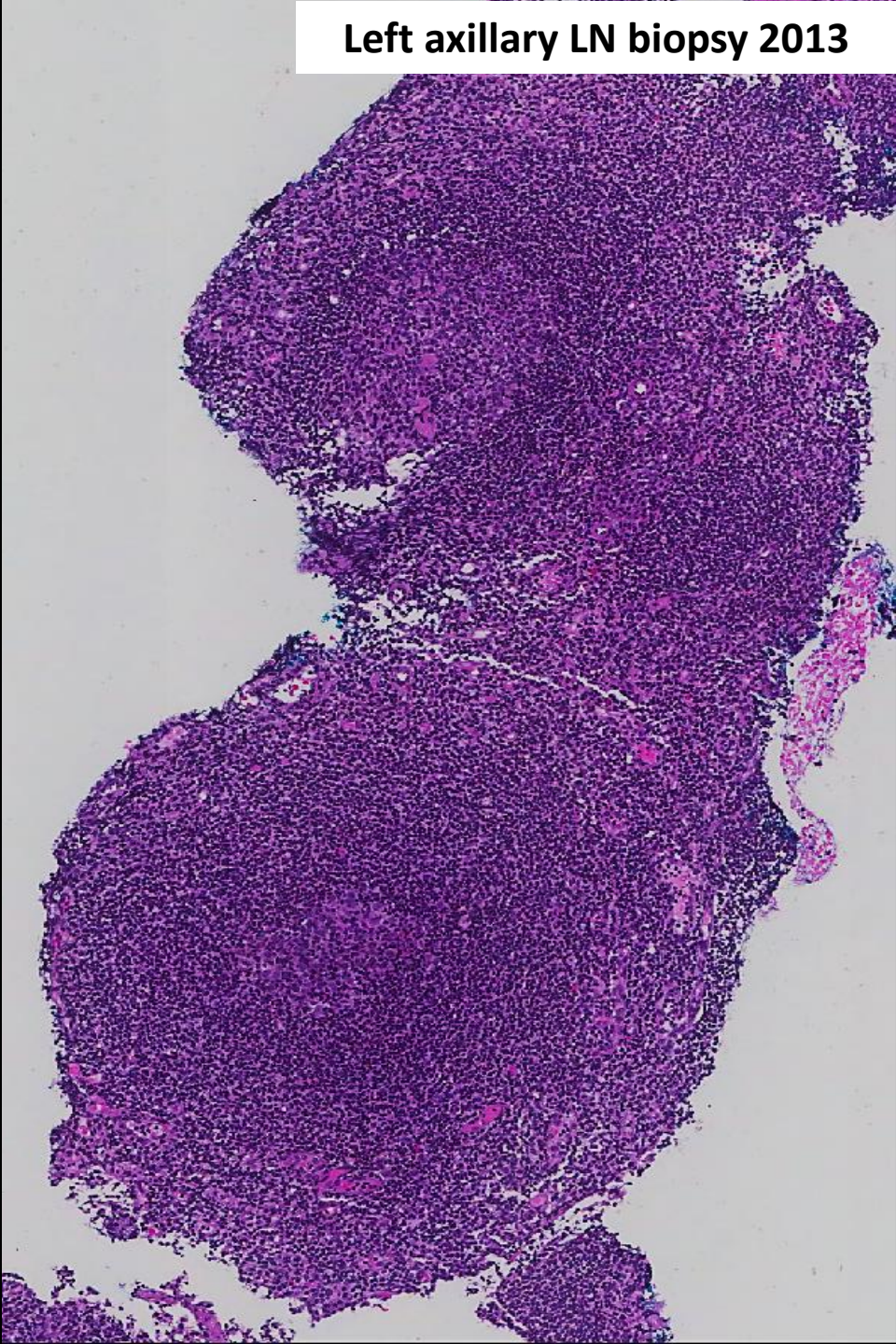
lambda



Left breast core biopsy 2013



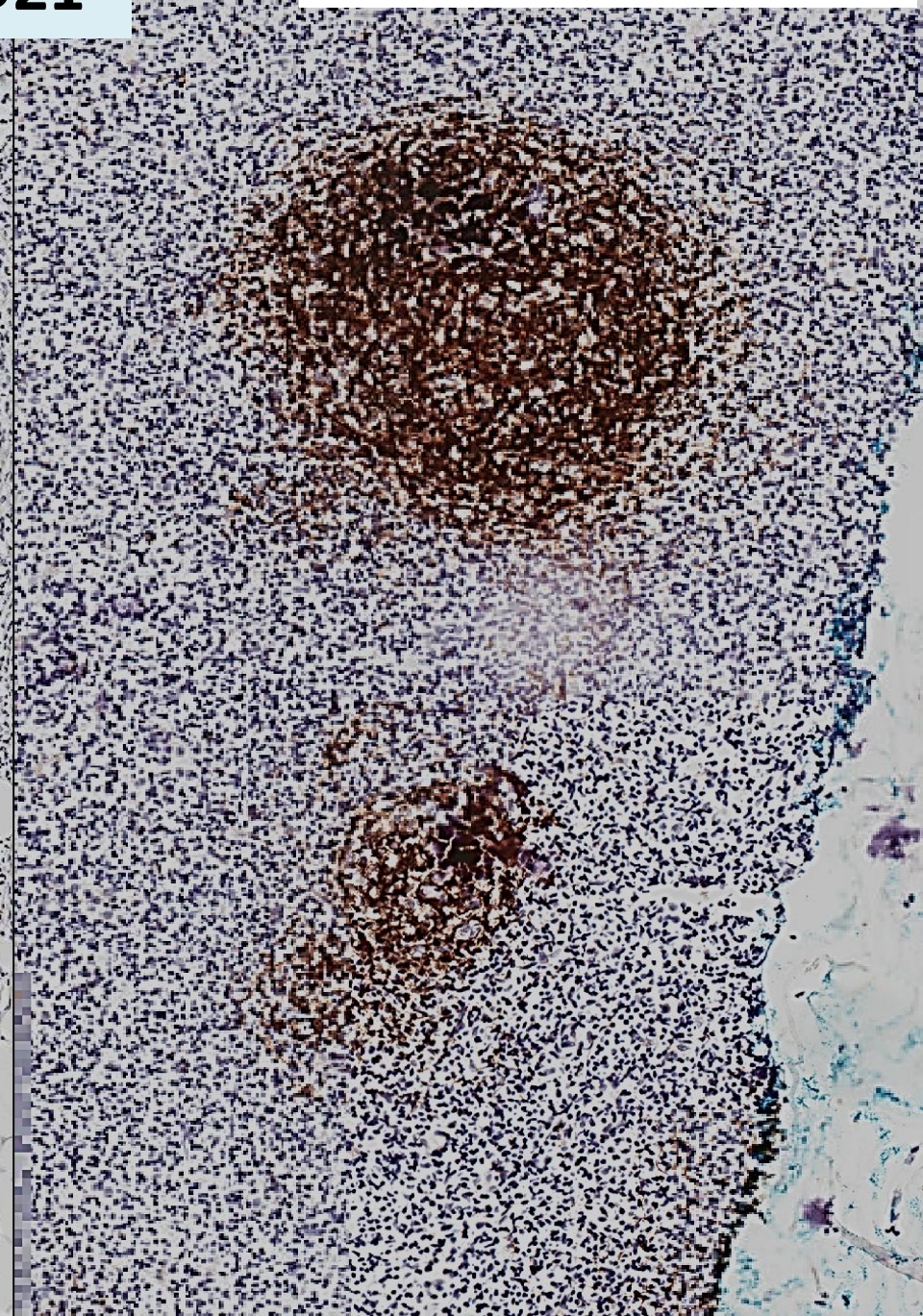
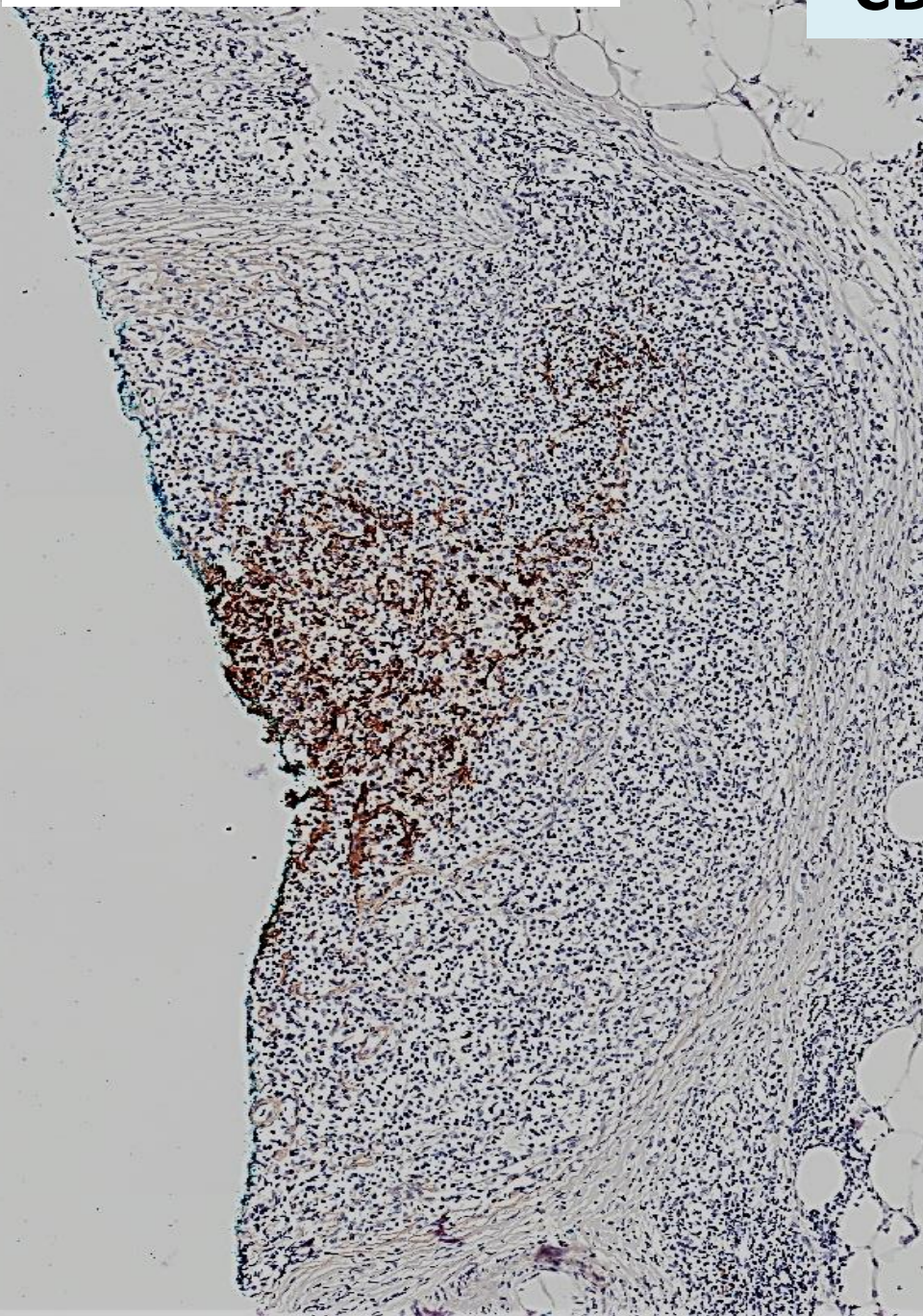
Left axillary LN biopsy 2013



Left breast core biopsy 2013

CD21

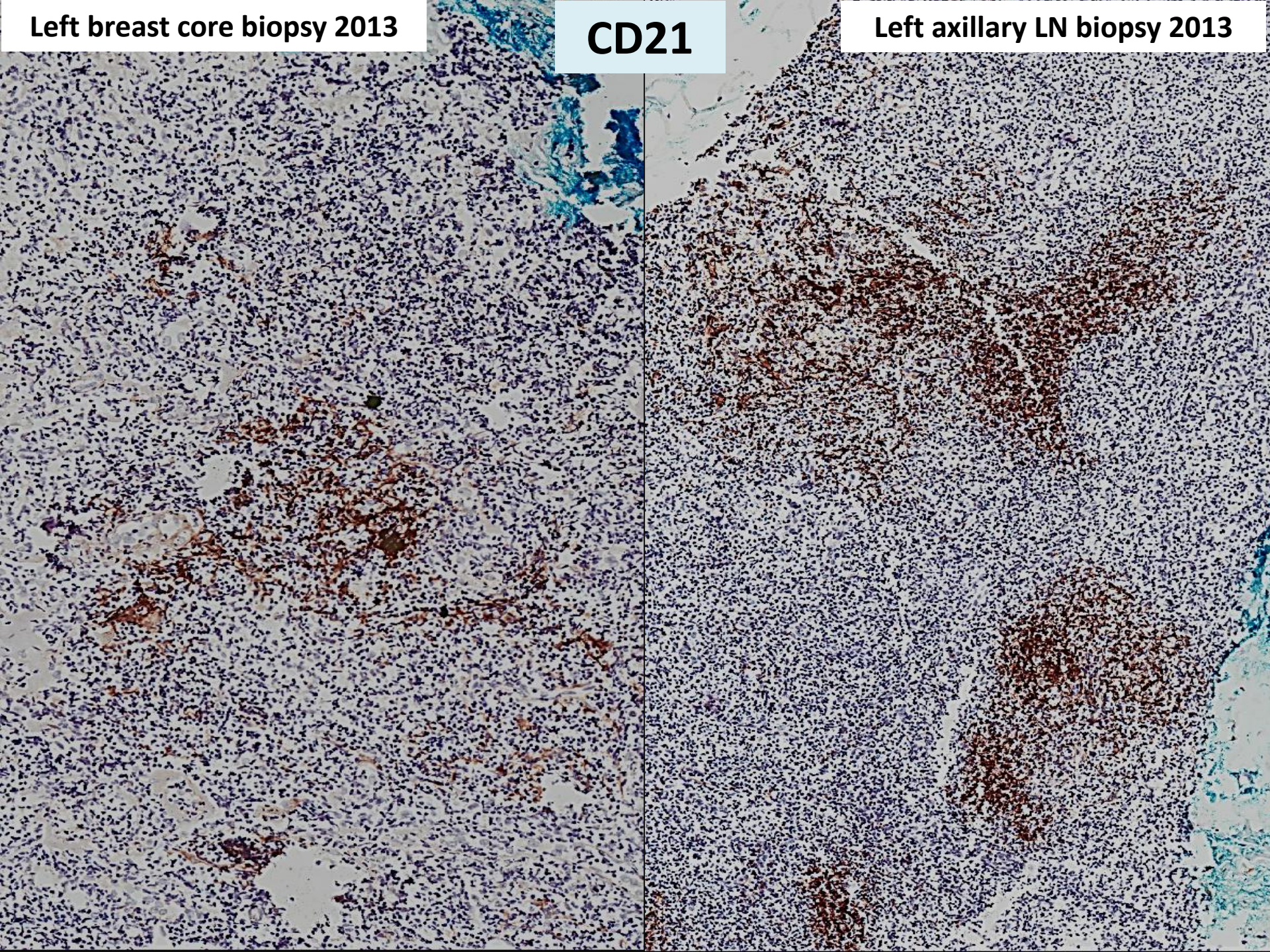
Left axillary LN biopsy 2013



Left breast core biopsy 2013

CD21

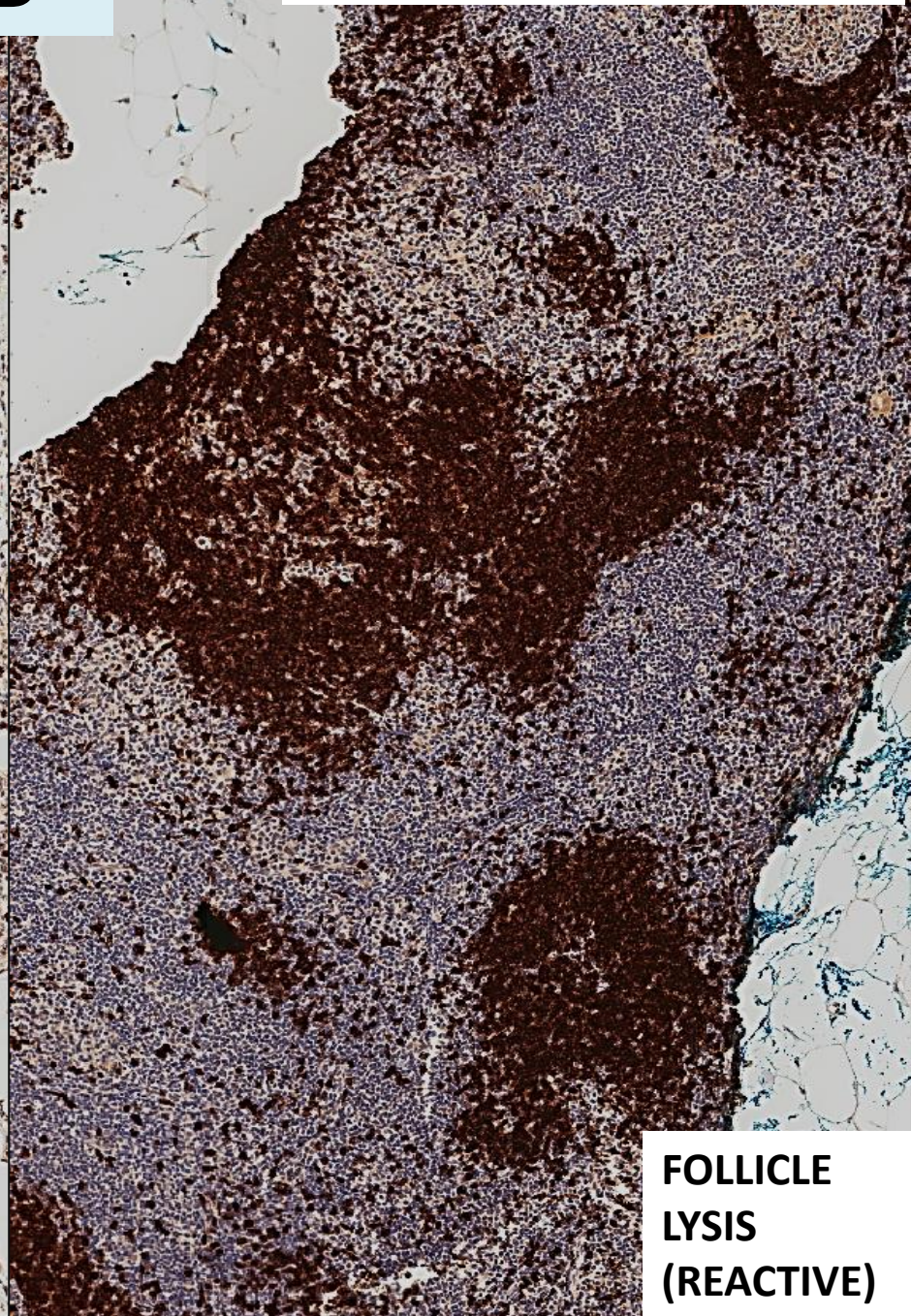
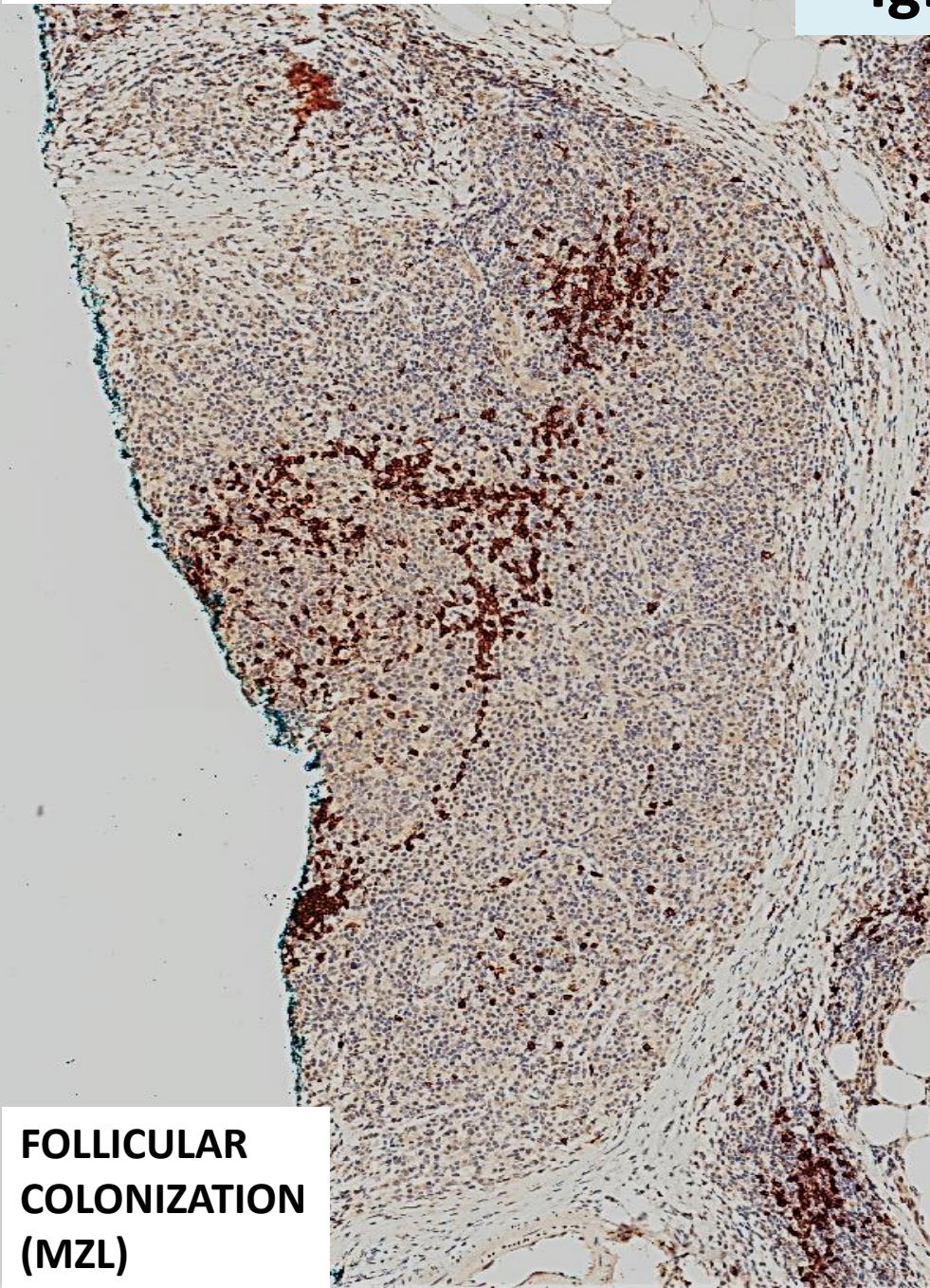
Left axillary LN biopsy 2013



Left breast core biopsy 2013

IgD

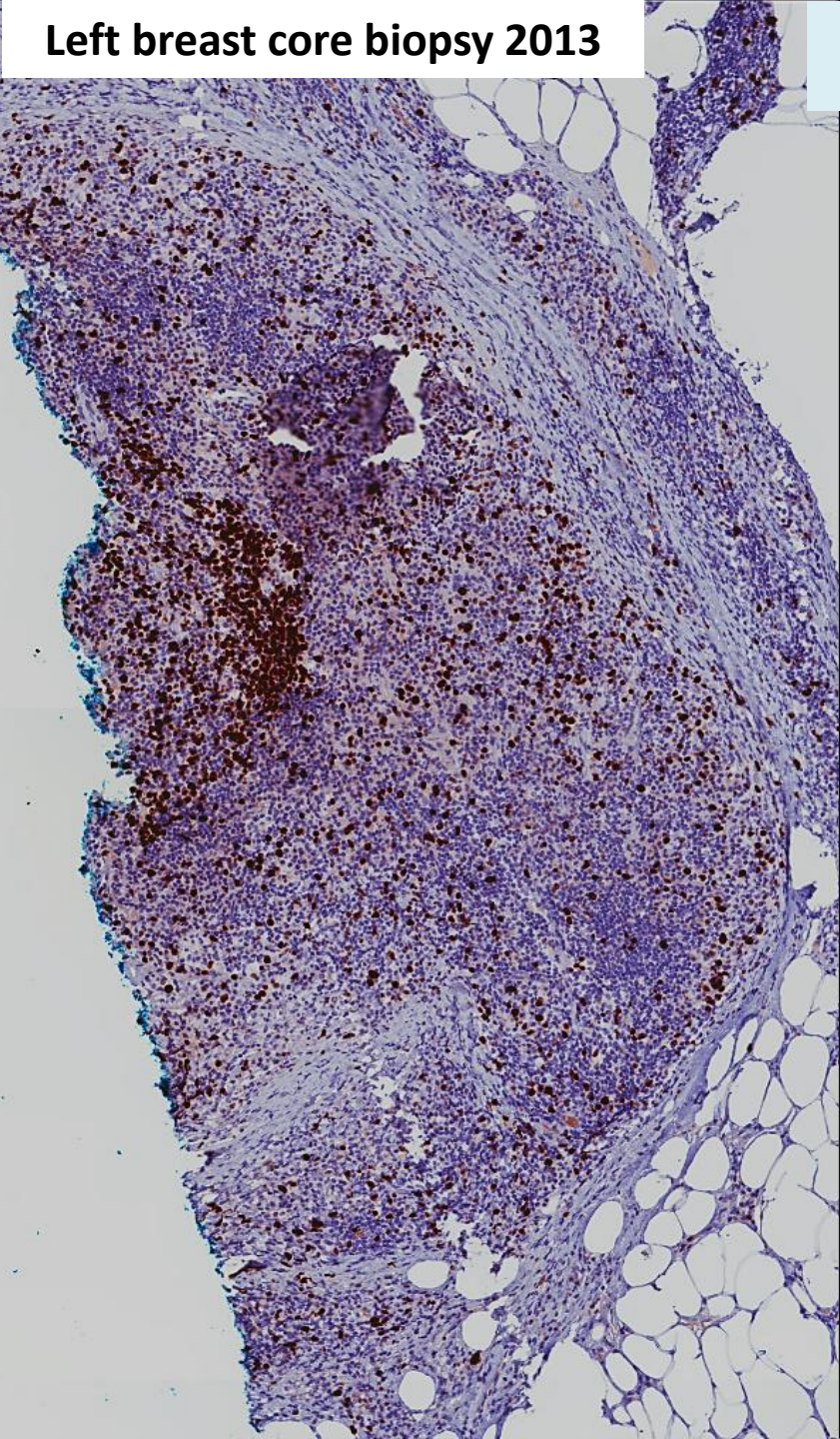
Left axillary LN biopsy 2013



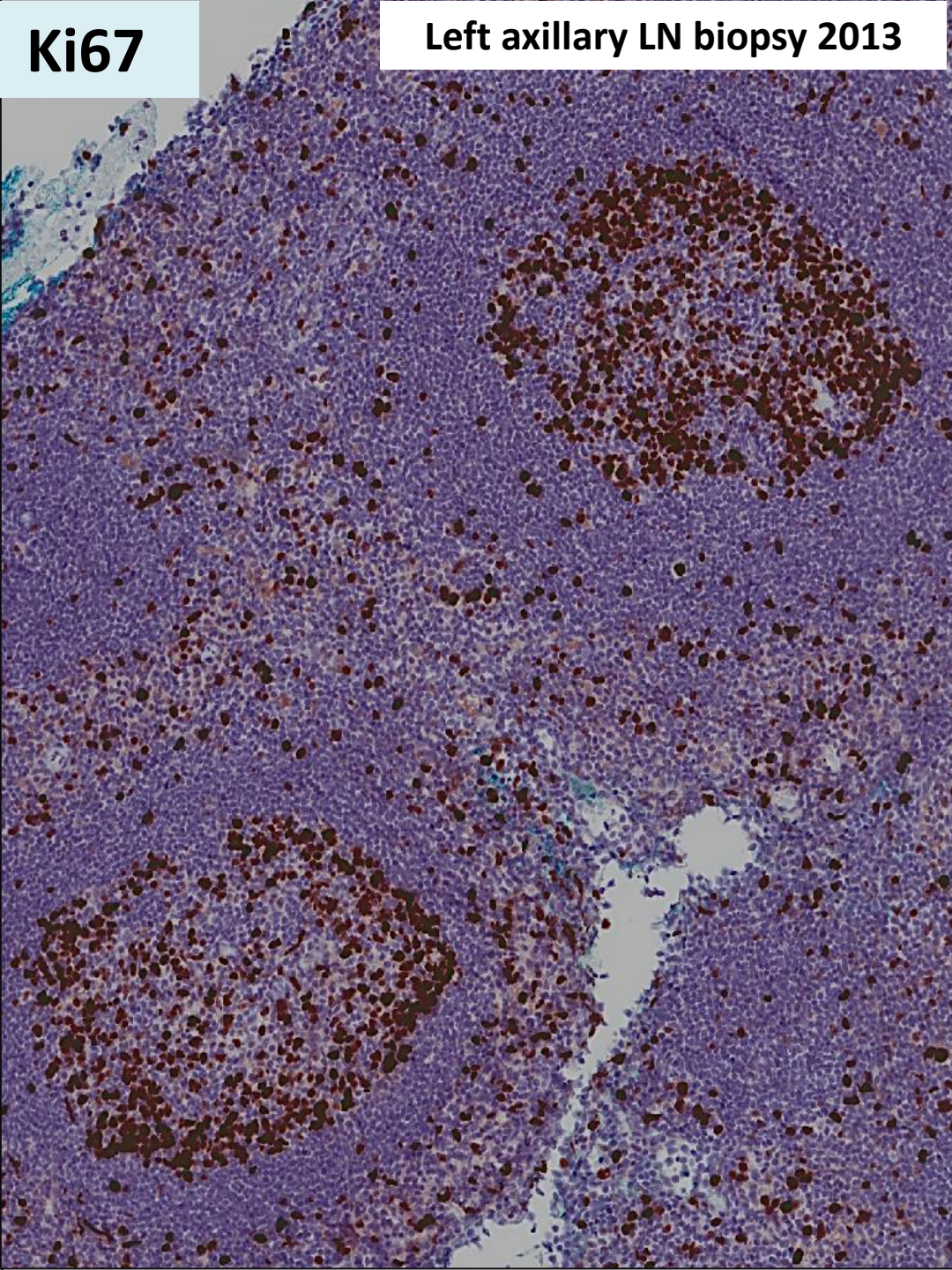
**FOLLICULAR
COLONIZATION
(MZL)**

**FOLLICLE
LYSIS
(REACTIVE)**

Left breast core biopsy 2013



Ki67



Left axillary LN biopsy 2013

- Left axillary lymph node:
 - ~ ***Lymphoid hyperplasia***
- Left breast lesion:
 - ~ ***Marginal zone B-cell lymphoma of mucosa-associated lymphoid tissue (MALT) with extreme plasmacytic differentiation***



IgG4 disease and MALT lymphoma

- Close pathogenetic relationship:
 - Close pathogenetic relationship between ocular immunoglobulin G4-related disease (IgG4-RD) and ocular adnexal mucosa-associated lymphoid tissue (MALT) lymphoma. *Leuk Lymphoma*. 2013 Aug 13.
 - Primary cutaneous marginal zone lymphomas with plasmacytic differentiation show frequent IgG4 expression. *Mod Pathol*. 2013 Jun 14.
 - Local recurrence as immunoglobulin G4 (IgG4)-related disease 10 years after radiotherapy to ocular adnexal extranodal marginal zone B-cell lymphoma of mucosa-associated lymphoid tissue. *J Clin Exp Hematop*. 2011;51(2):125-33.



IgG4 disease and MALT lymphoma

- Close pathogenetic relationship:
 - Marginal zone lymphomas involving meningeal dura: possible link to IgG4-related diseases. *Mod Pathol.* 2011 Mar;24(3):355-66.
 - IgG4-producing marginal zone B-cell lymphoma. *Int J Hematol.* 2008 Nov;88(4):428-33.
 - Ocular adnexal lymphoma associated with IgG4+ chronic sclerosing dacryoadenitis: a previously undescribed complication of IgG4-related sclerosing disease. *Am J Surg Pathol.* 2008 Aug;32(8):1159-67.



 Breast
Pathology
Course 2014

