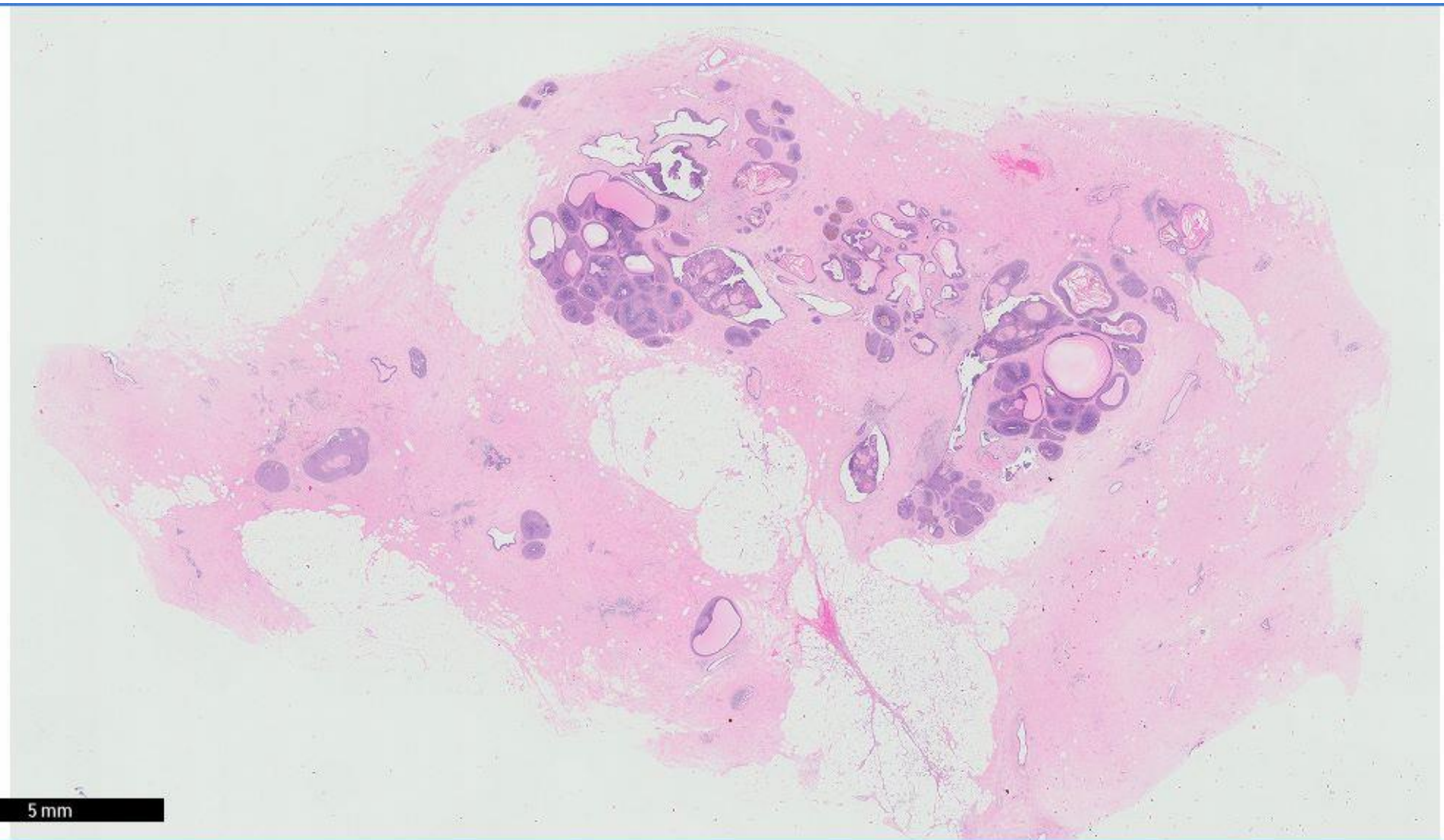


# Case 41

52 year old woman underwent a left simple mastectomy with sentinel lymph node biopsy after core biopsies of nodules at 0230 and 0200 of the left breast disclosed malignancy.

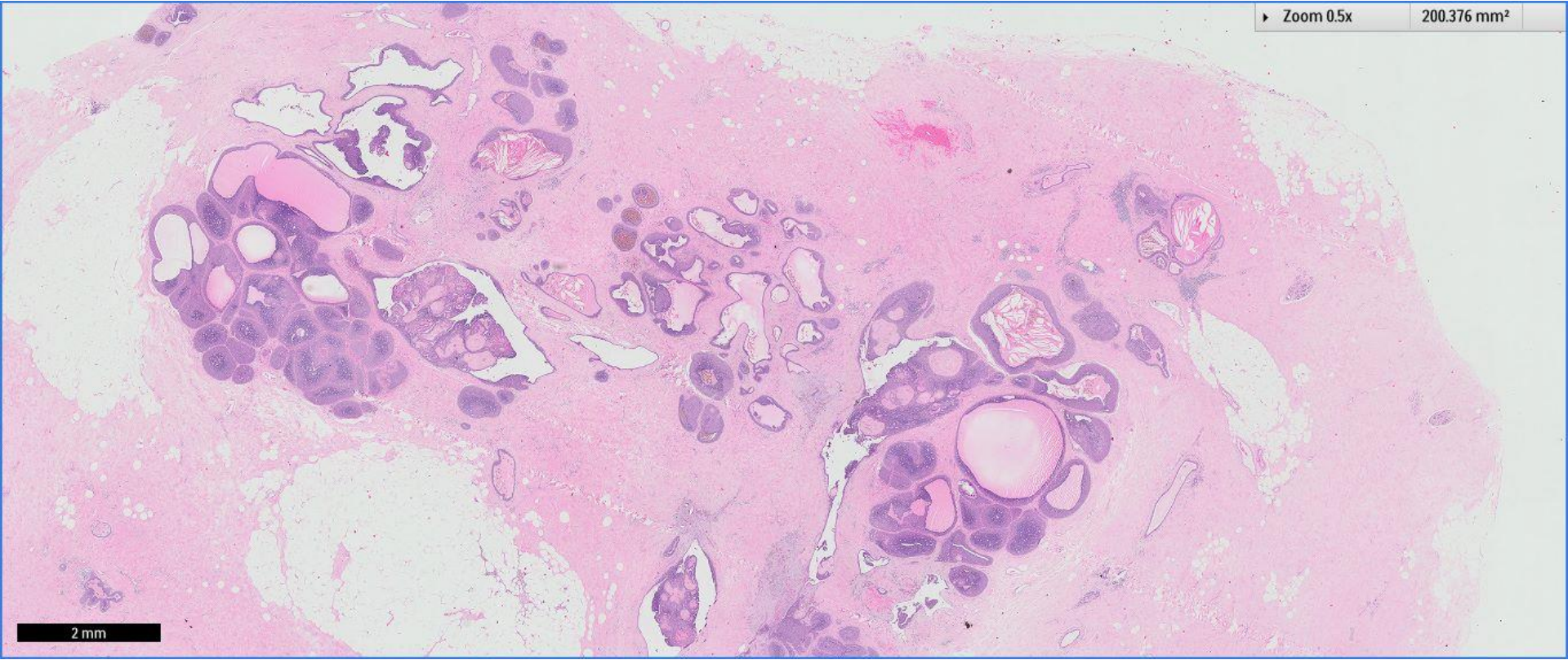




5 mm

▶ Zoom 0.5x

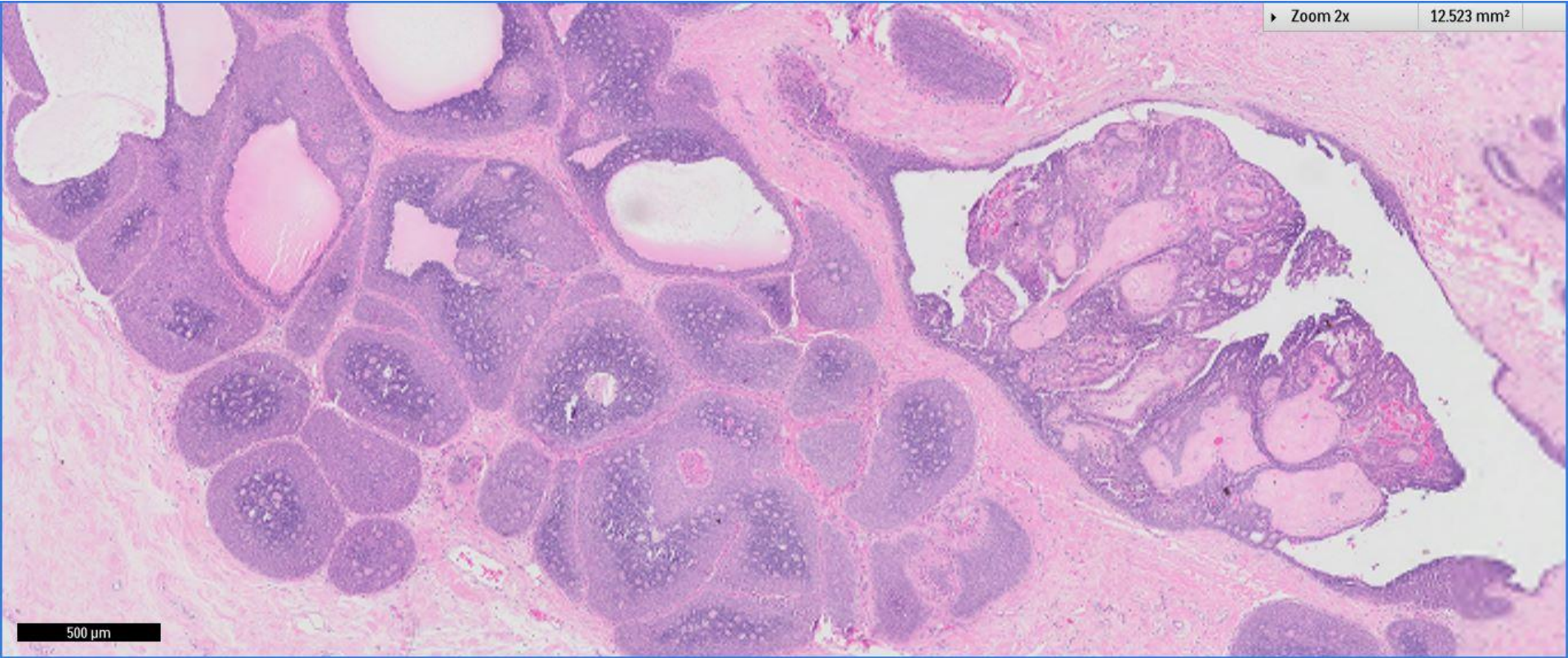
200.376 mm<sup>2</sup>



2 mm

▶ Zoom 2x

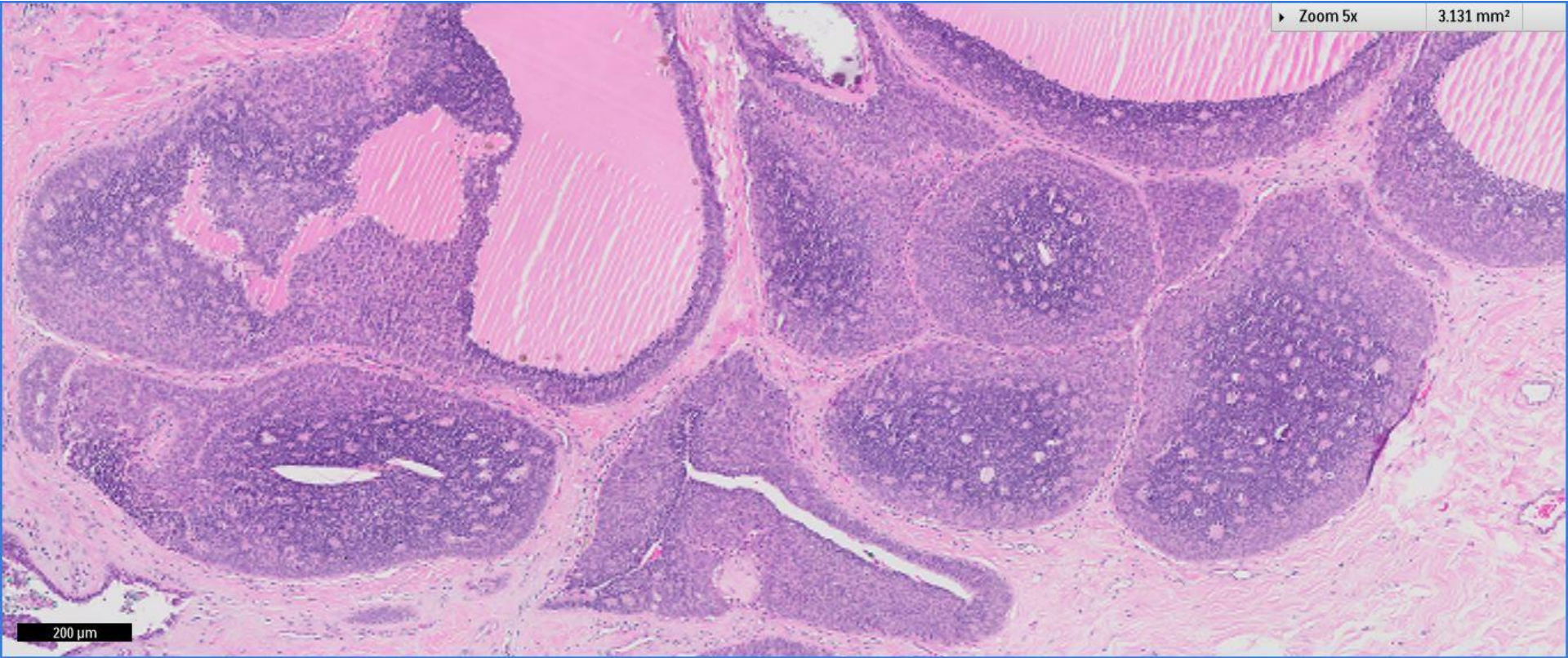
12.523 mm<sup>2</sup>



500  $\mu$ m

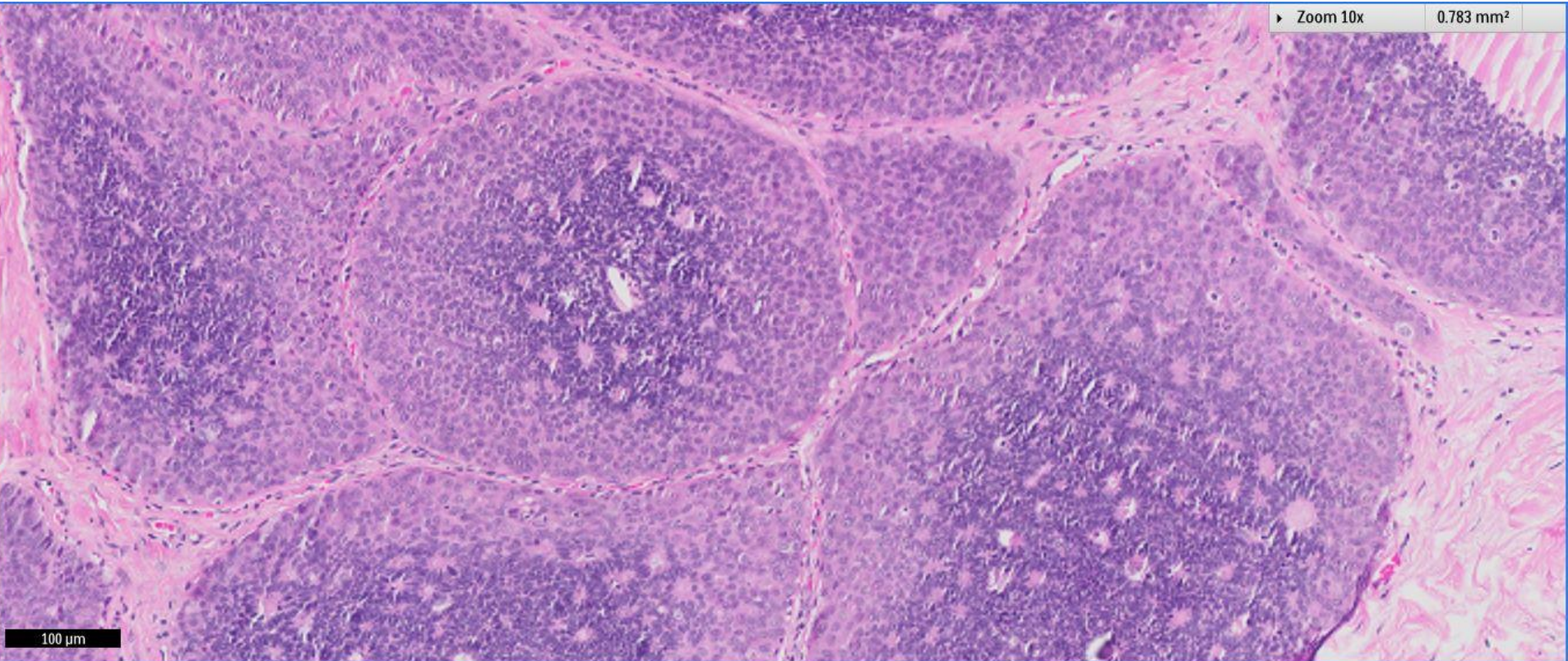
▶ Zoom 5x

3.131 mm<sup>2</sup>



200 μm

Zoom 10x 0.783 mm<sup>2</sup>

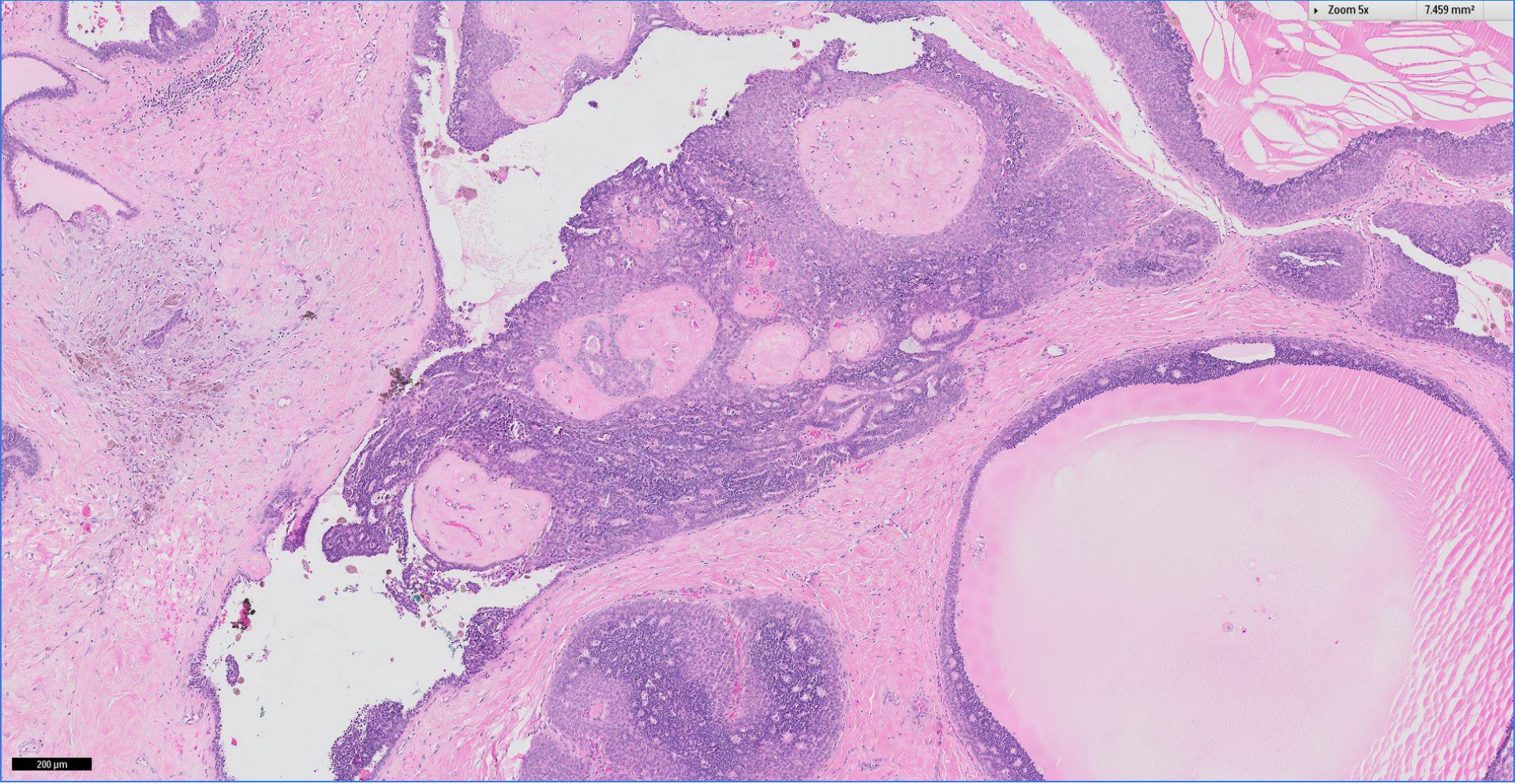


100  $\mu$ m



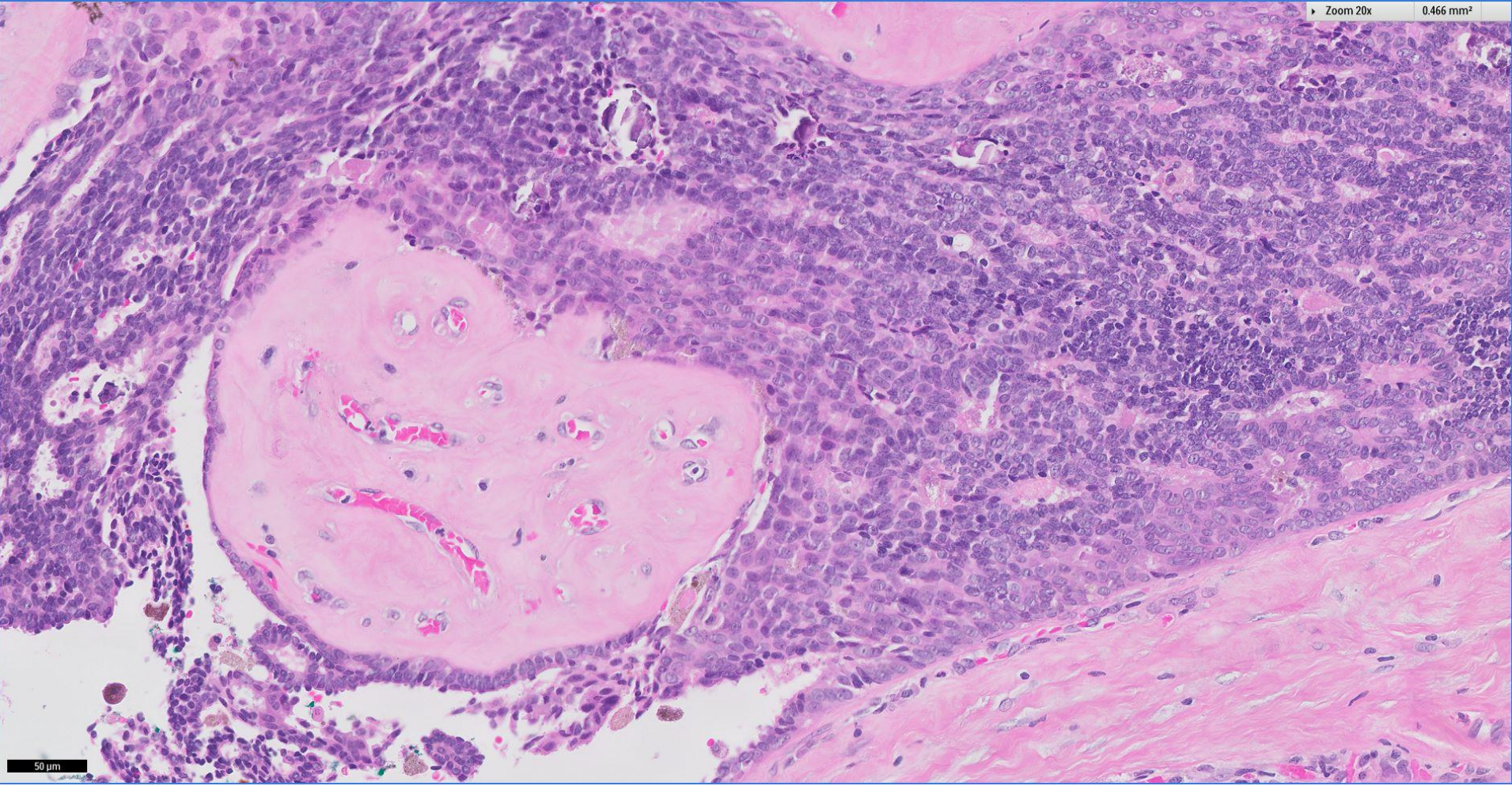
Zoom 5x

7.459 mm<sup>2</sup>



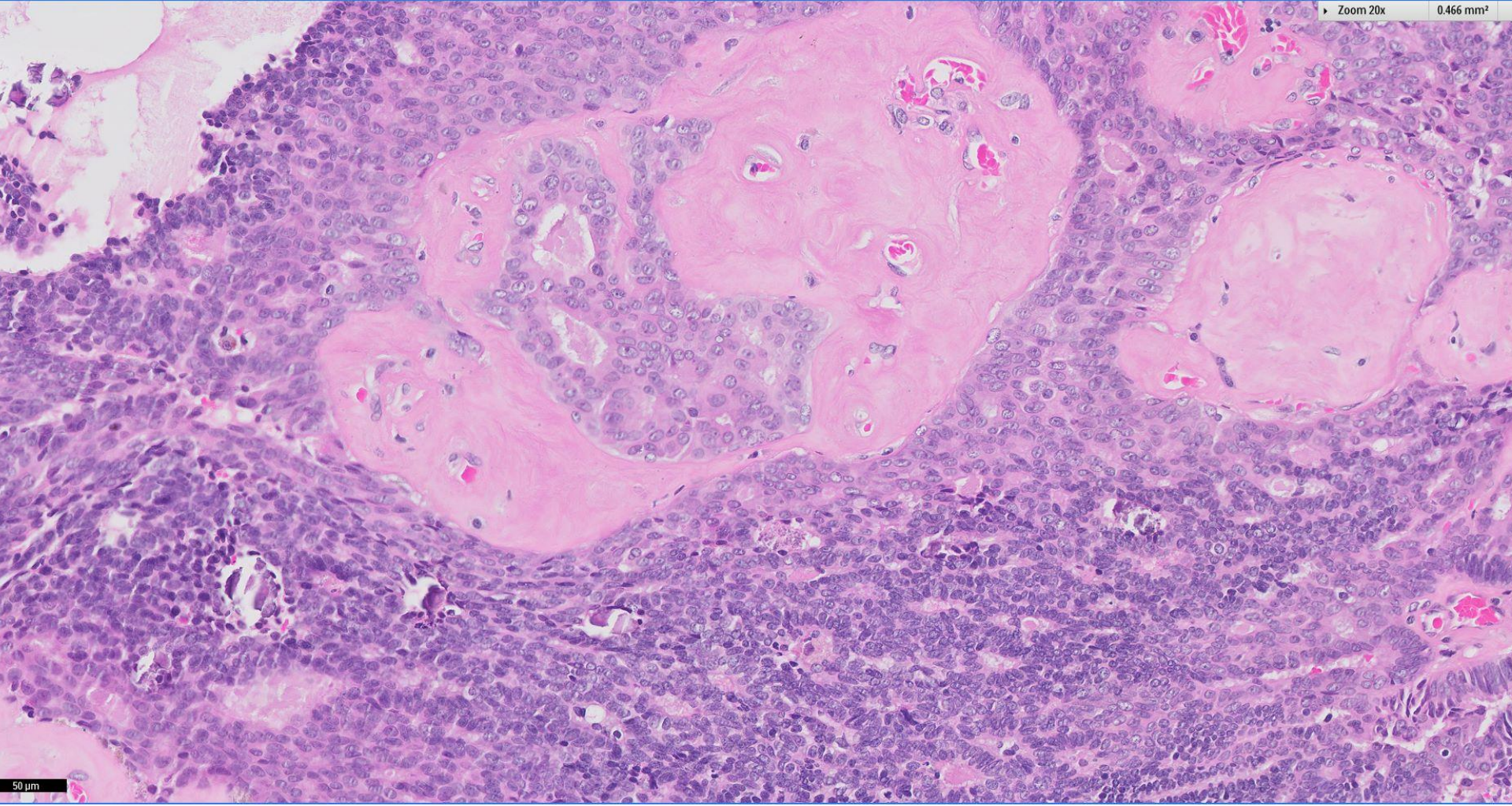
200 μm



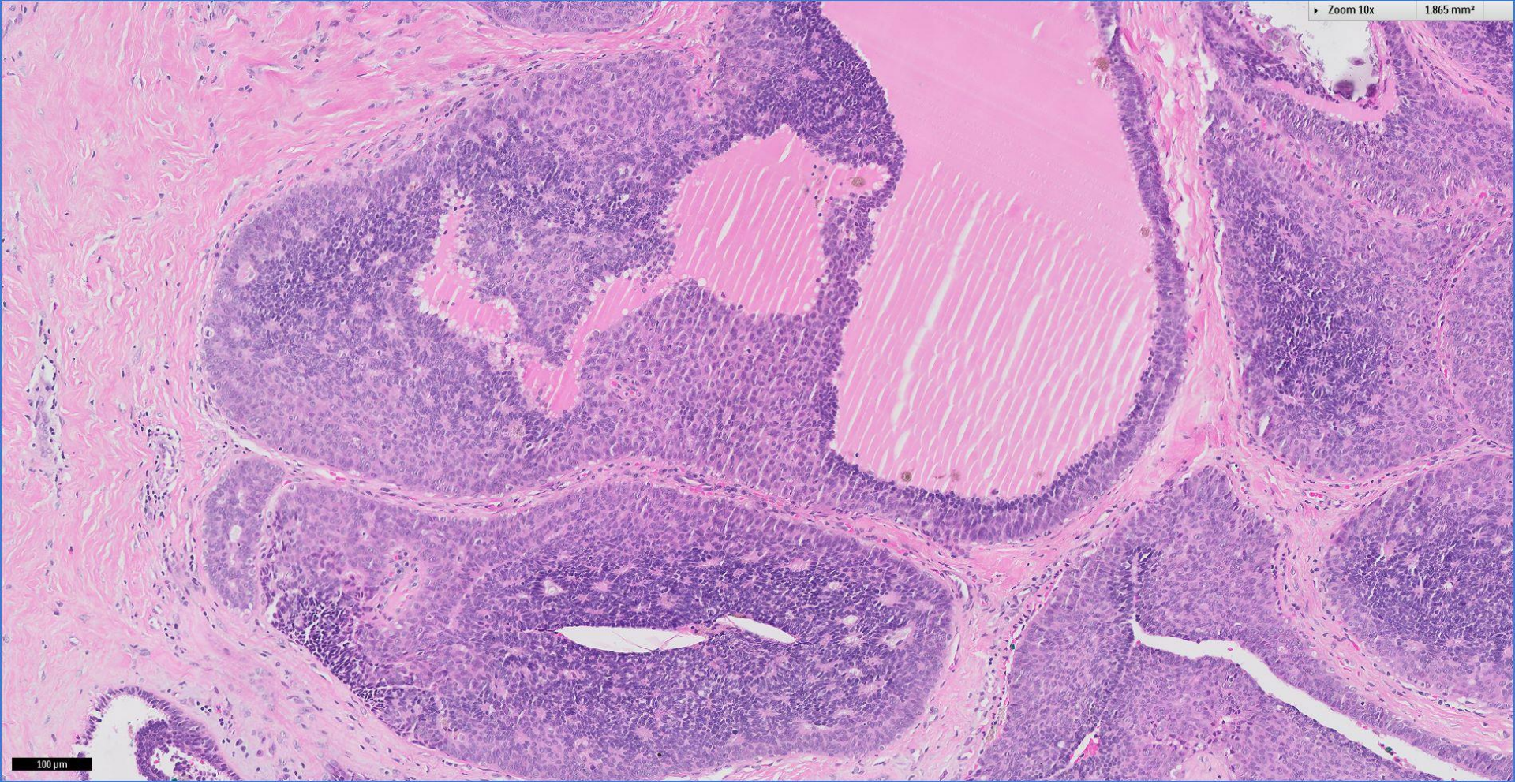


Zoom 20x

0.466 mm<sup>2</sup>

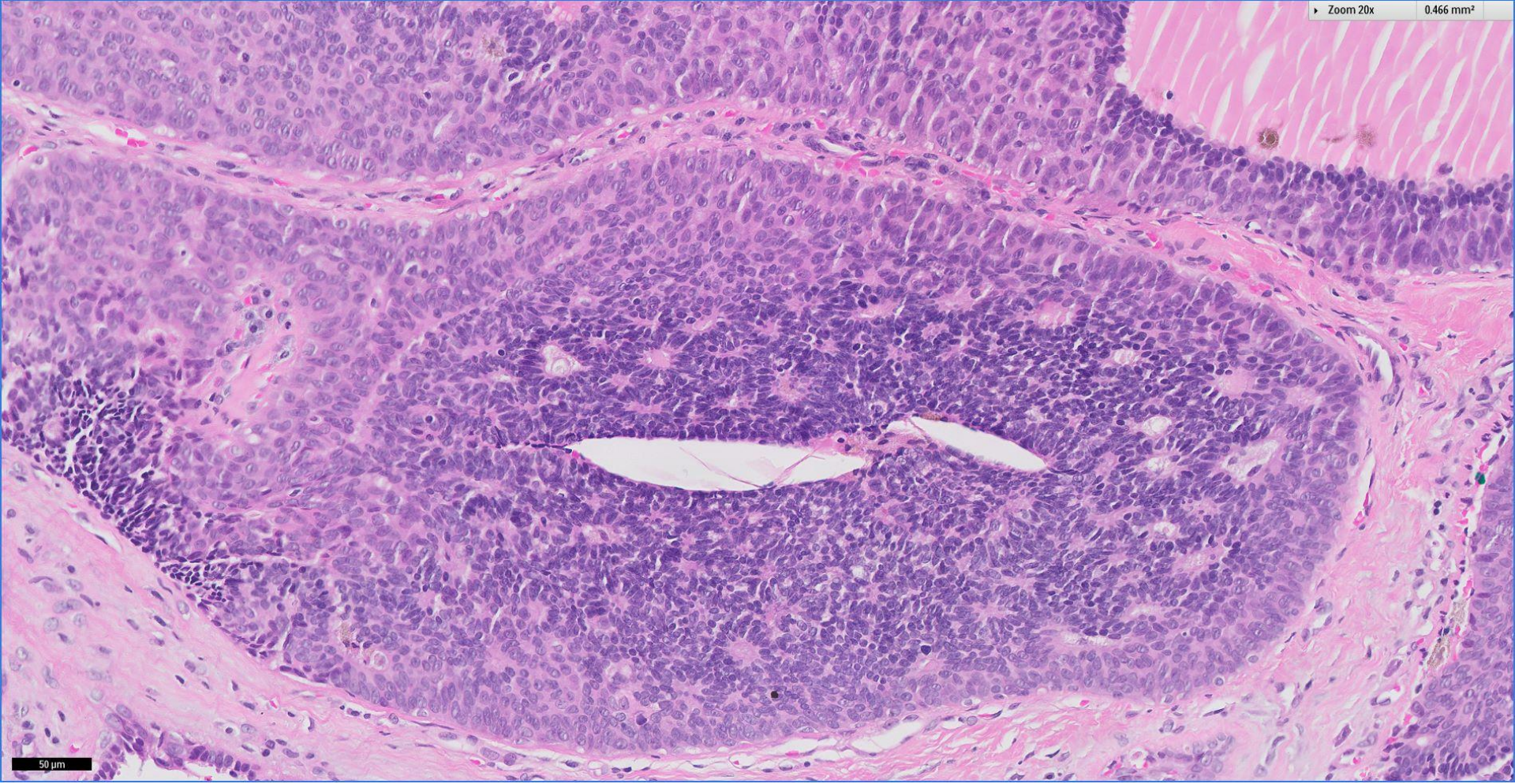


50 μm



Zoom 20x

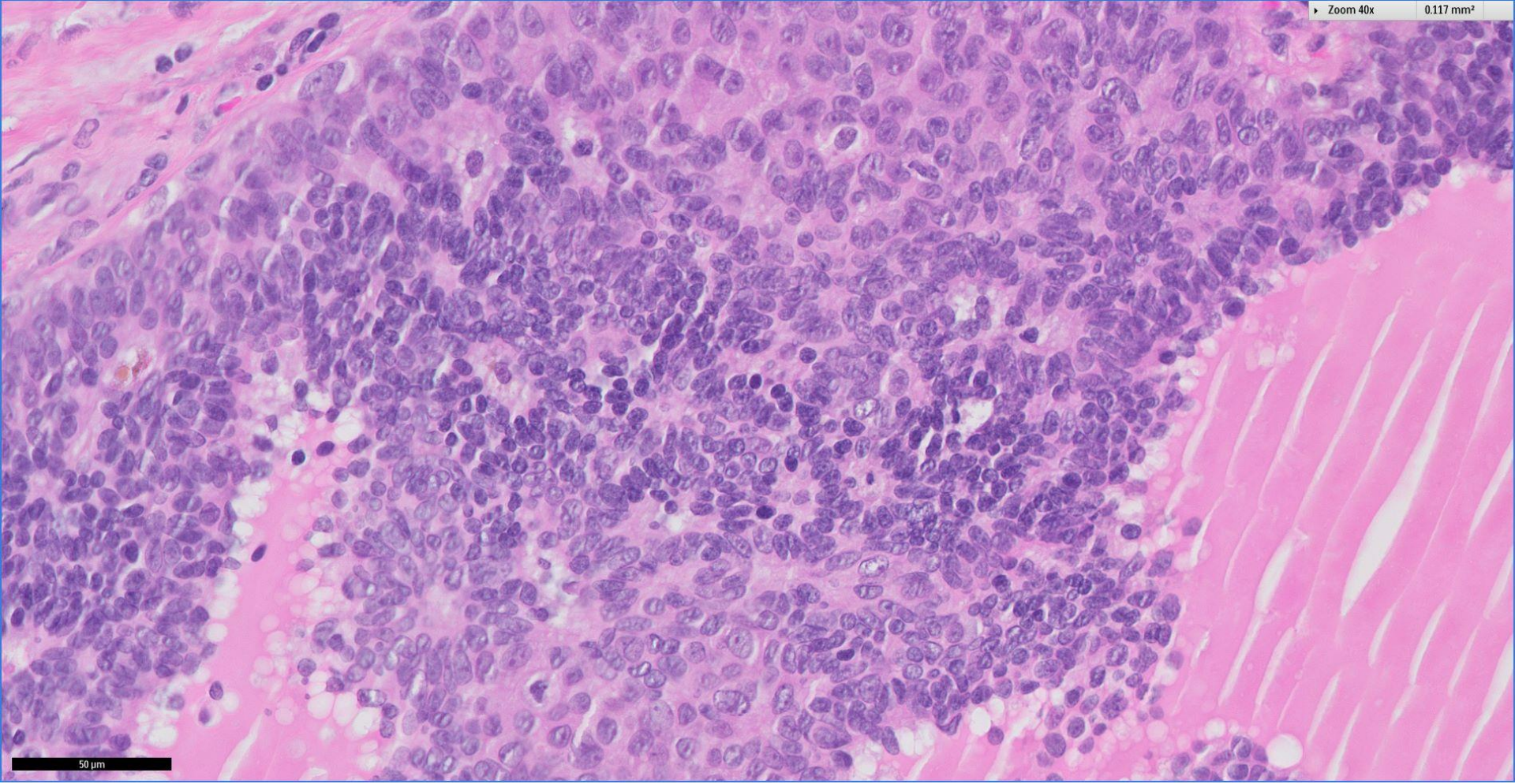
0.466 mm<sup>2</sup>



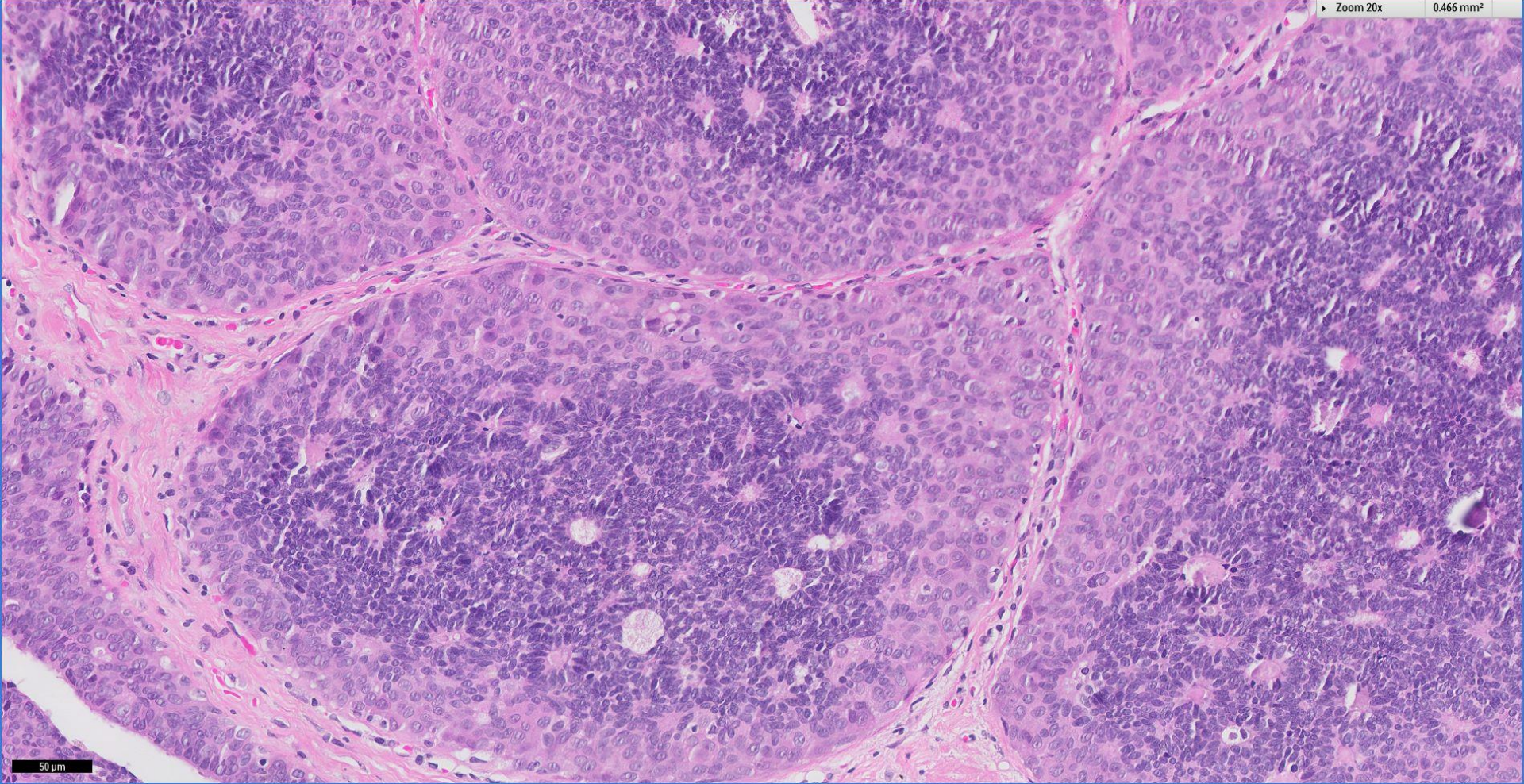
50 μm

Zoom 40x

0.117 mm<sup>2</sup>

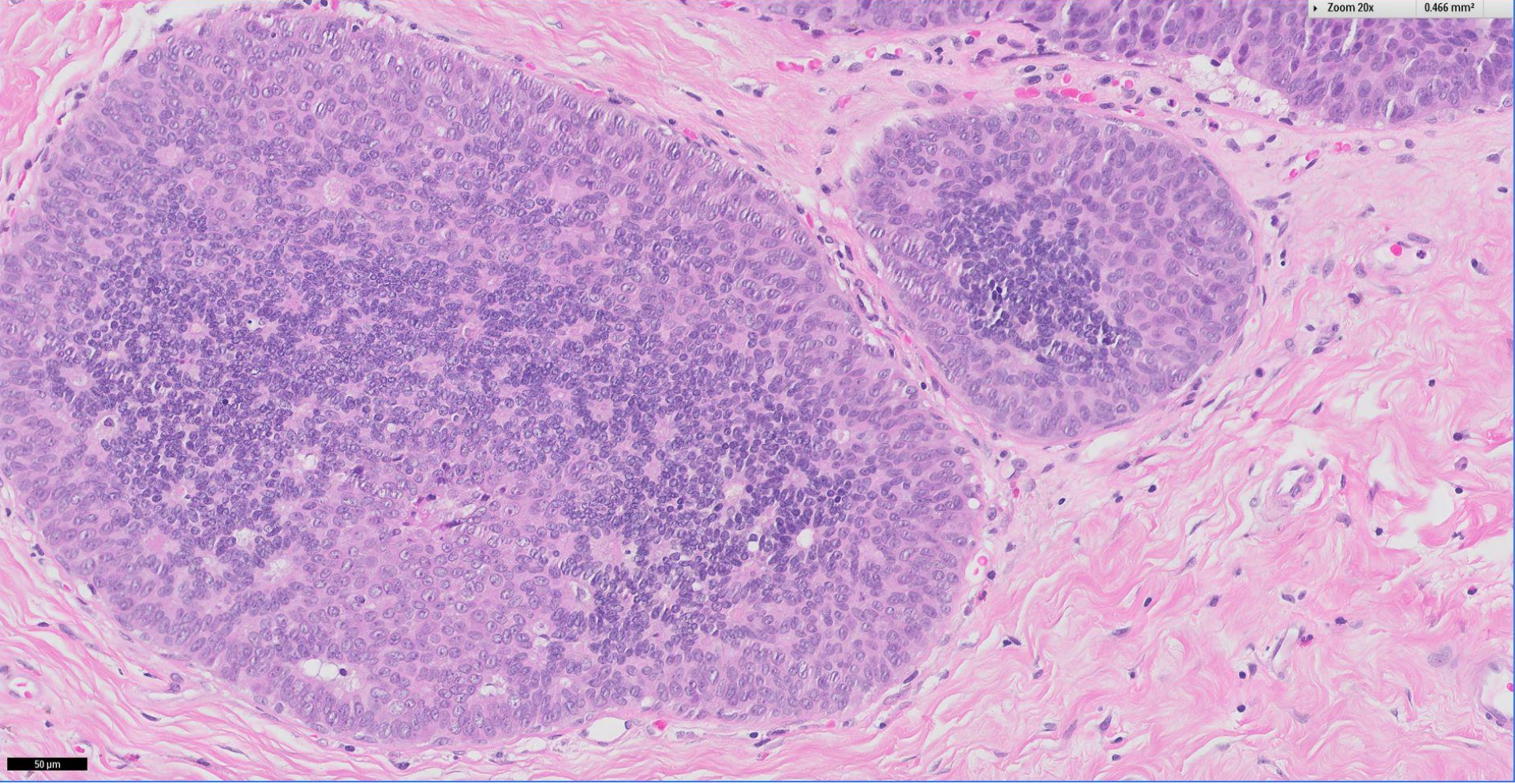


50 μm



Zoom 20x

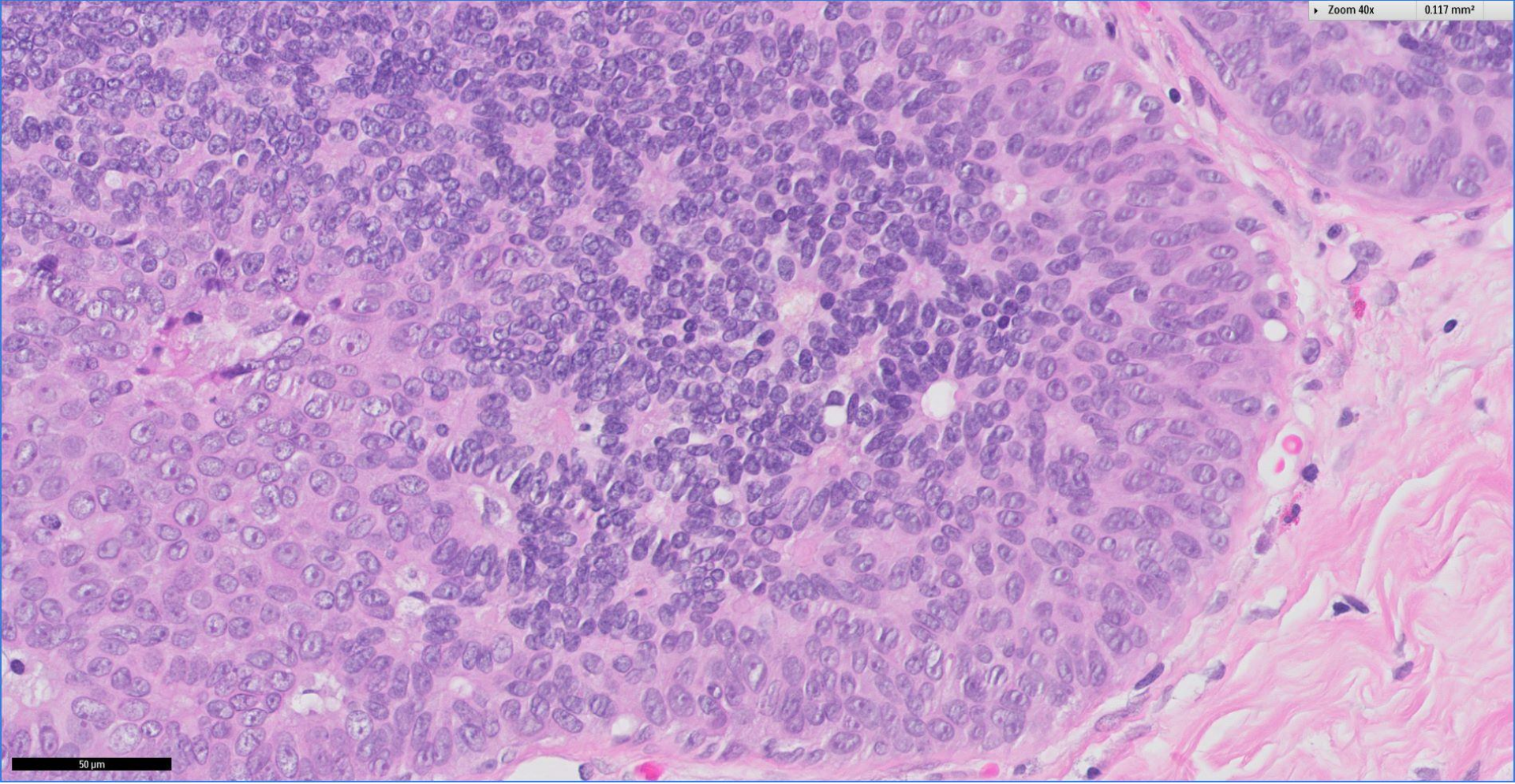
0.466 mm<sup>2</sup>



50 μm

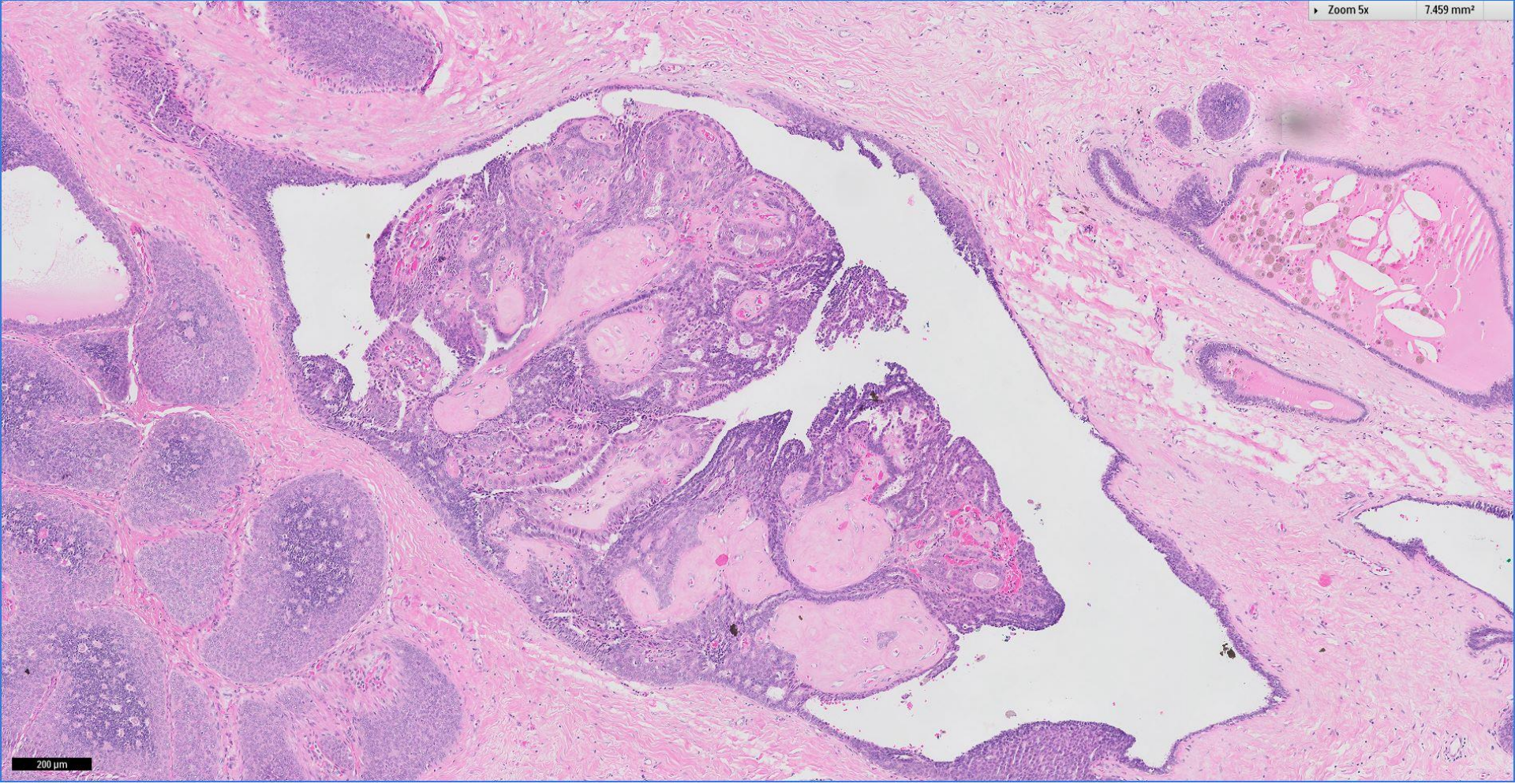
Zoom 40x

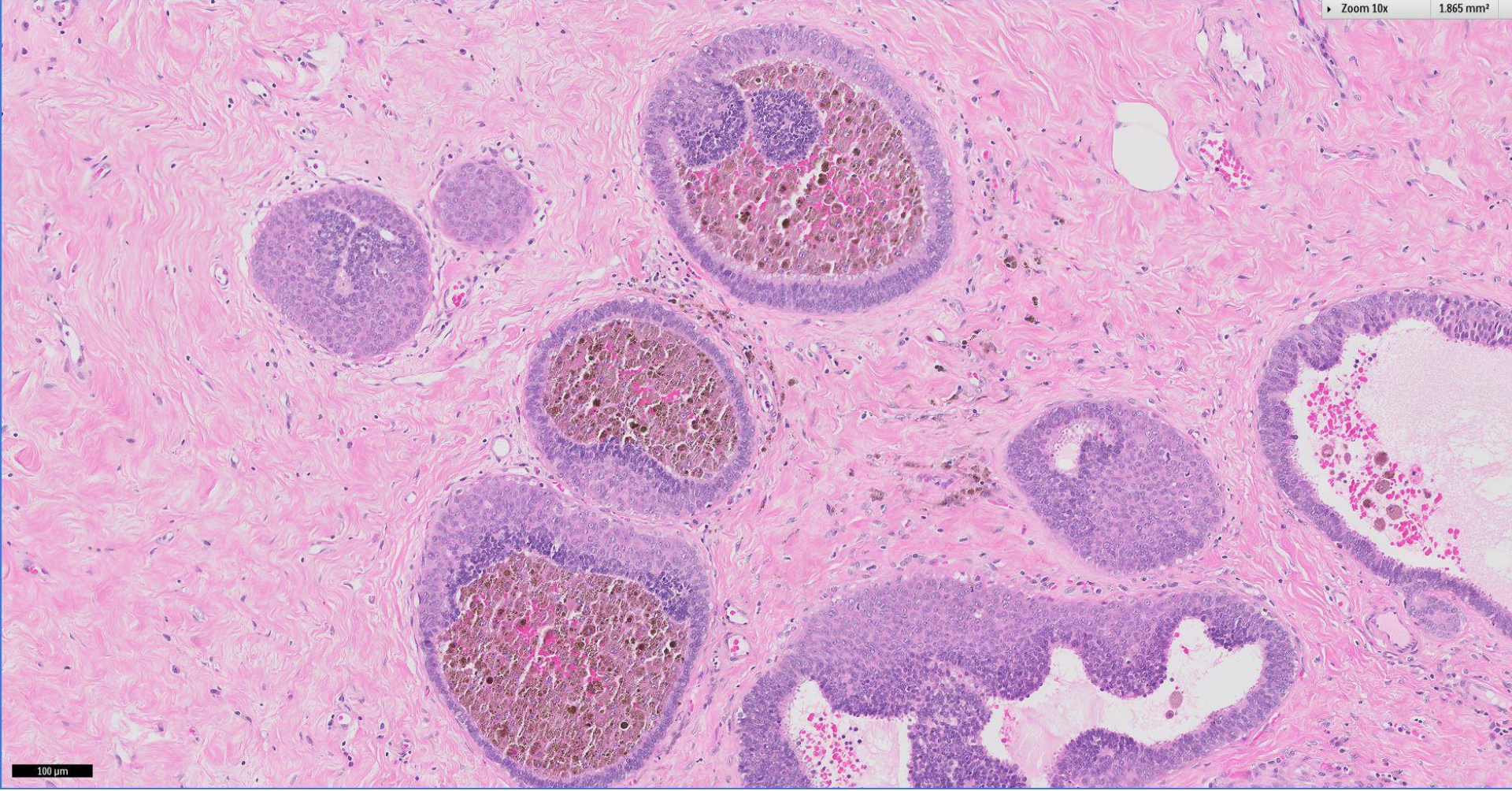
0.117 mm<sup>2</sup>

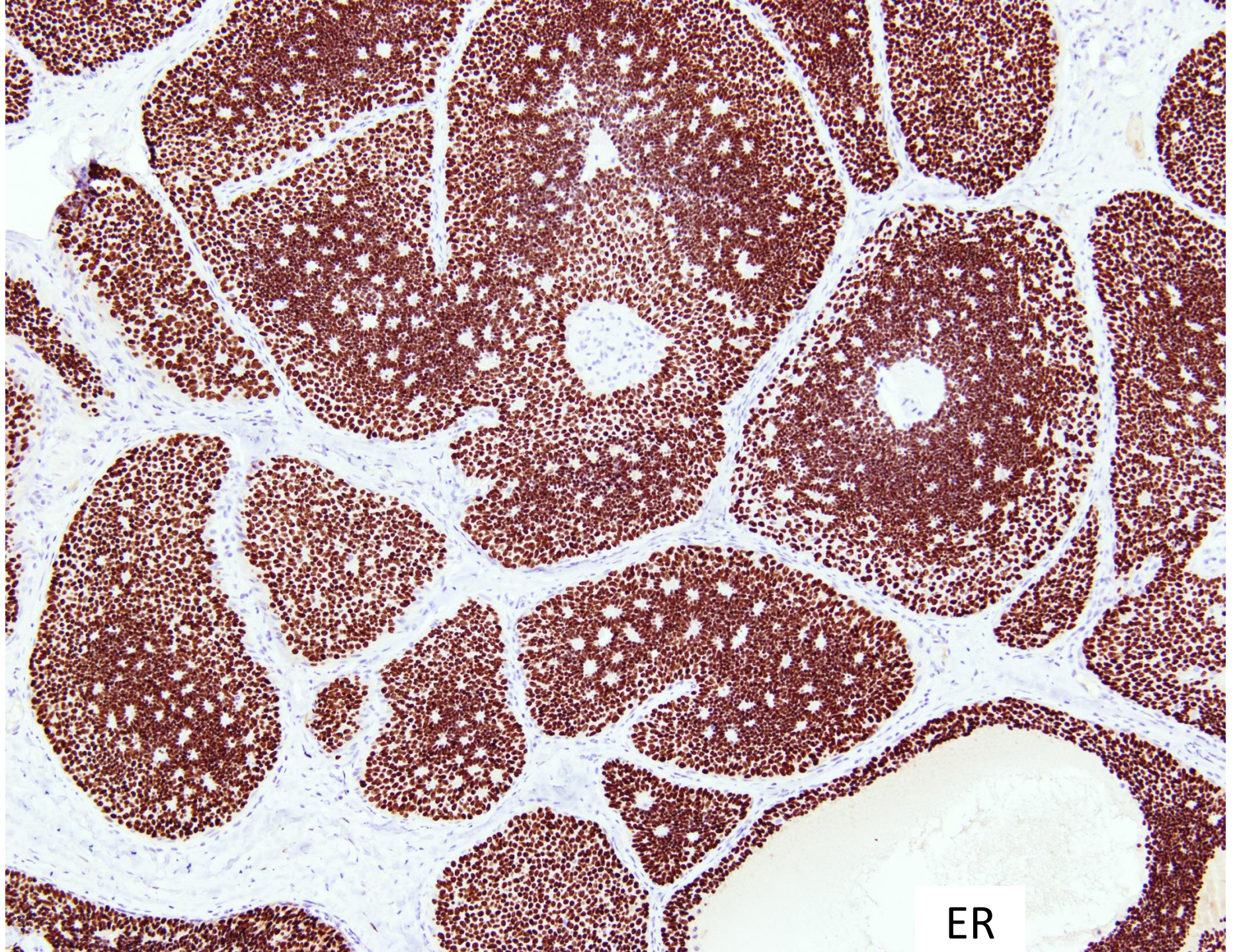


50 μm

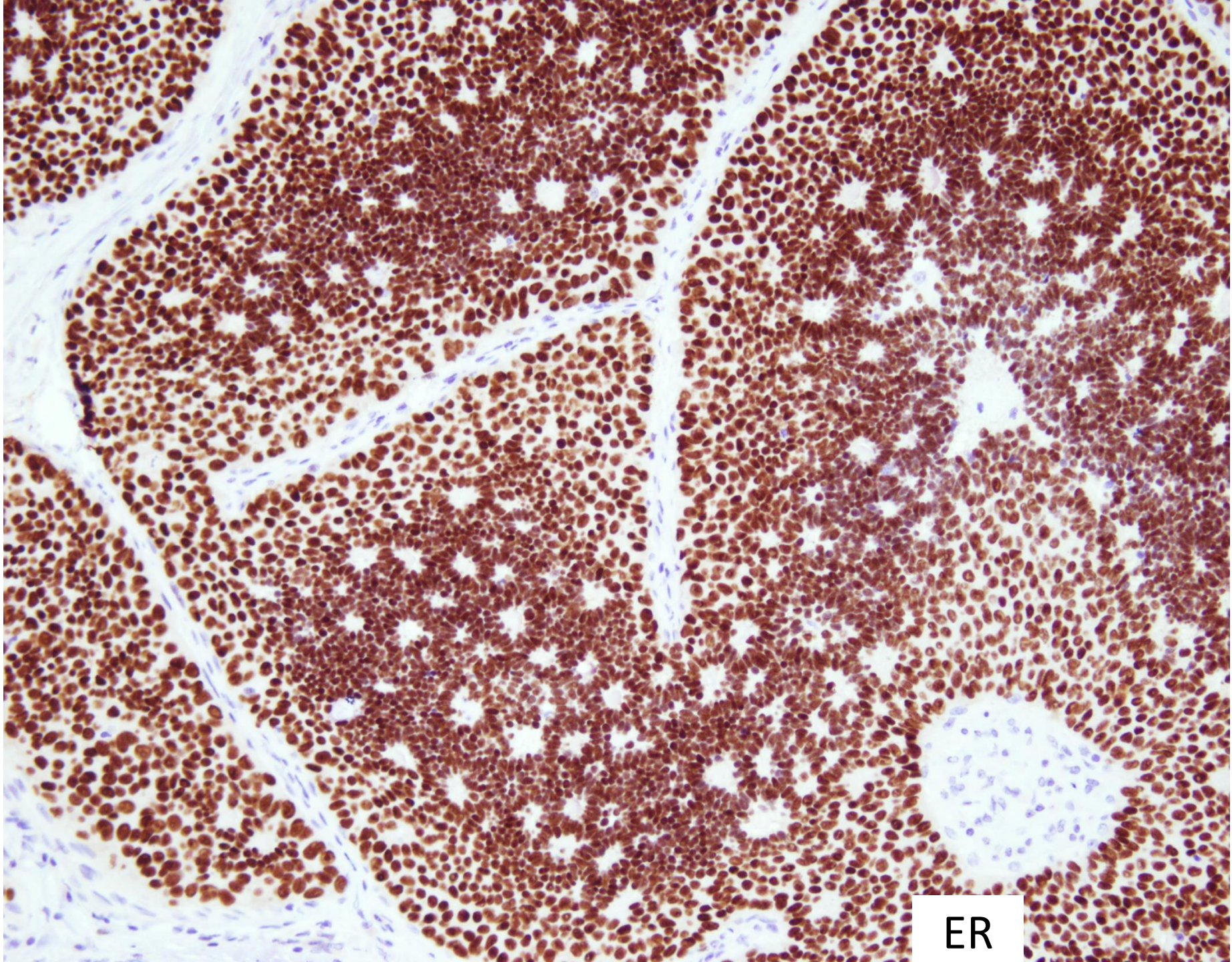




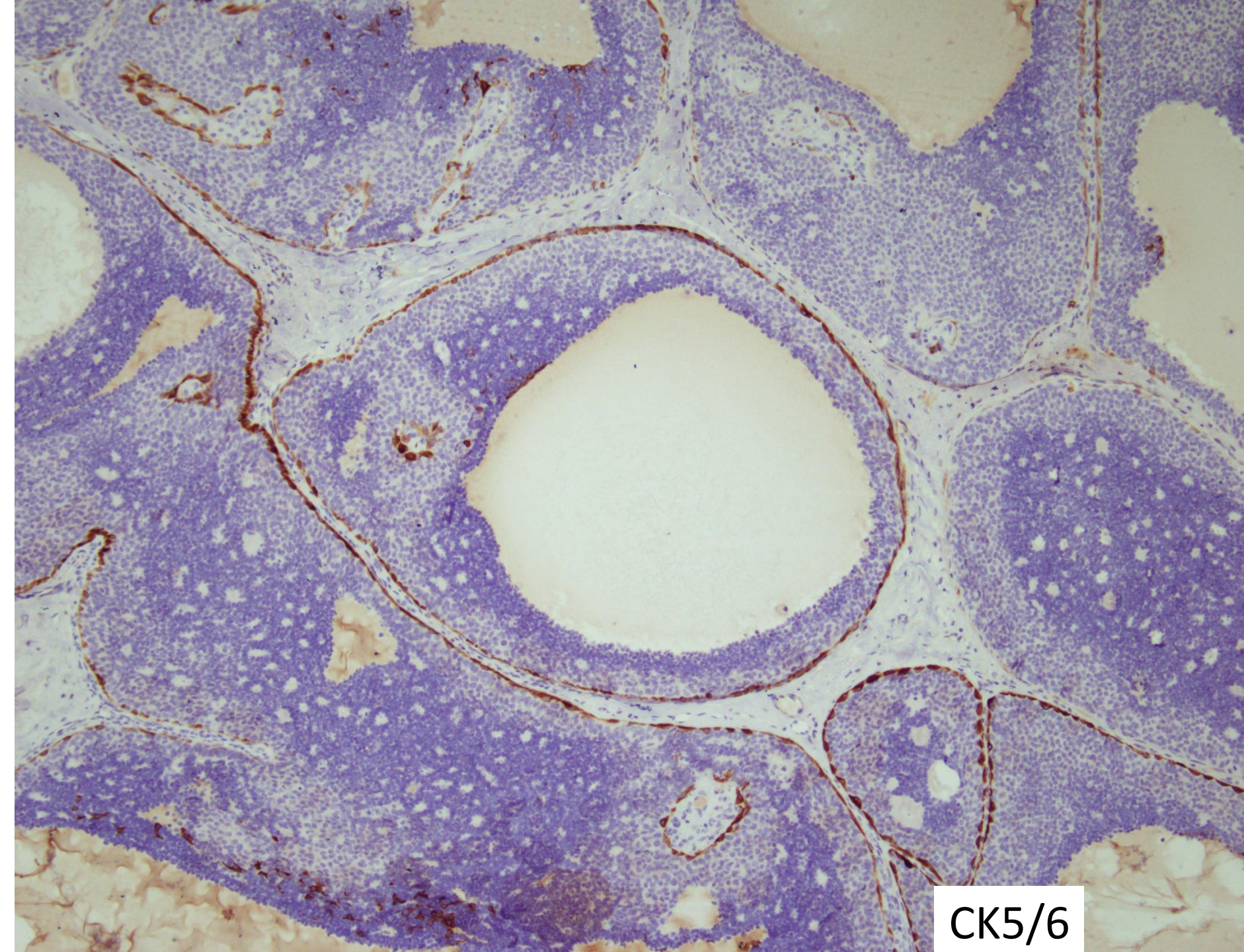




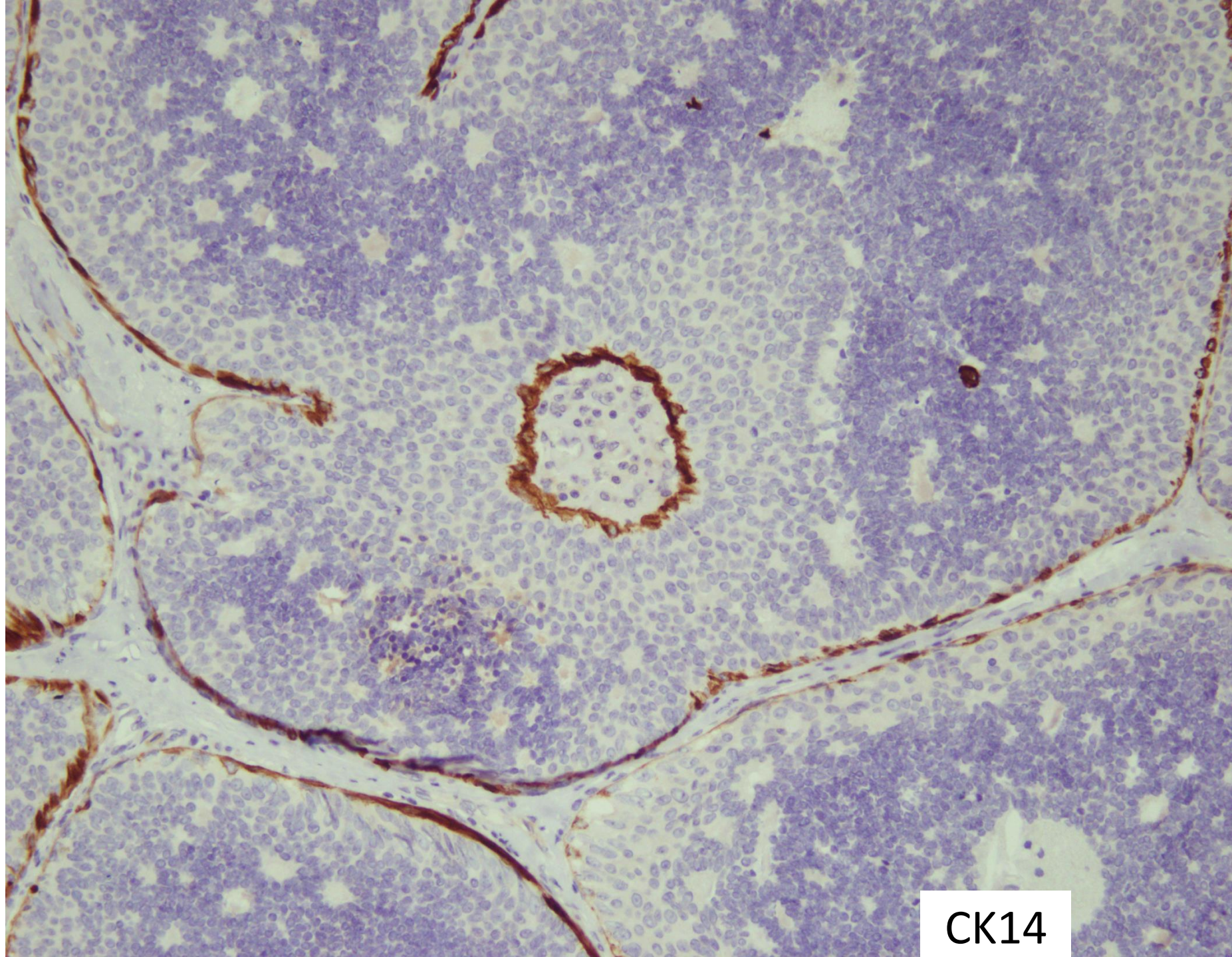
ER



ER



CK5/6



CK14

Left breast, mastectomy:

*Ductal carcinoma in situ, low to intermediate nuclear grade, without necrosis, cribriform pattern*



 Breast  
Pathology  
Course 2014

