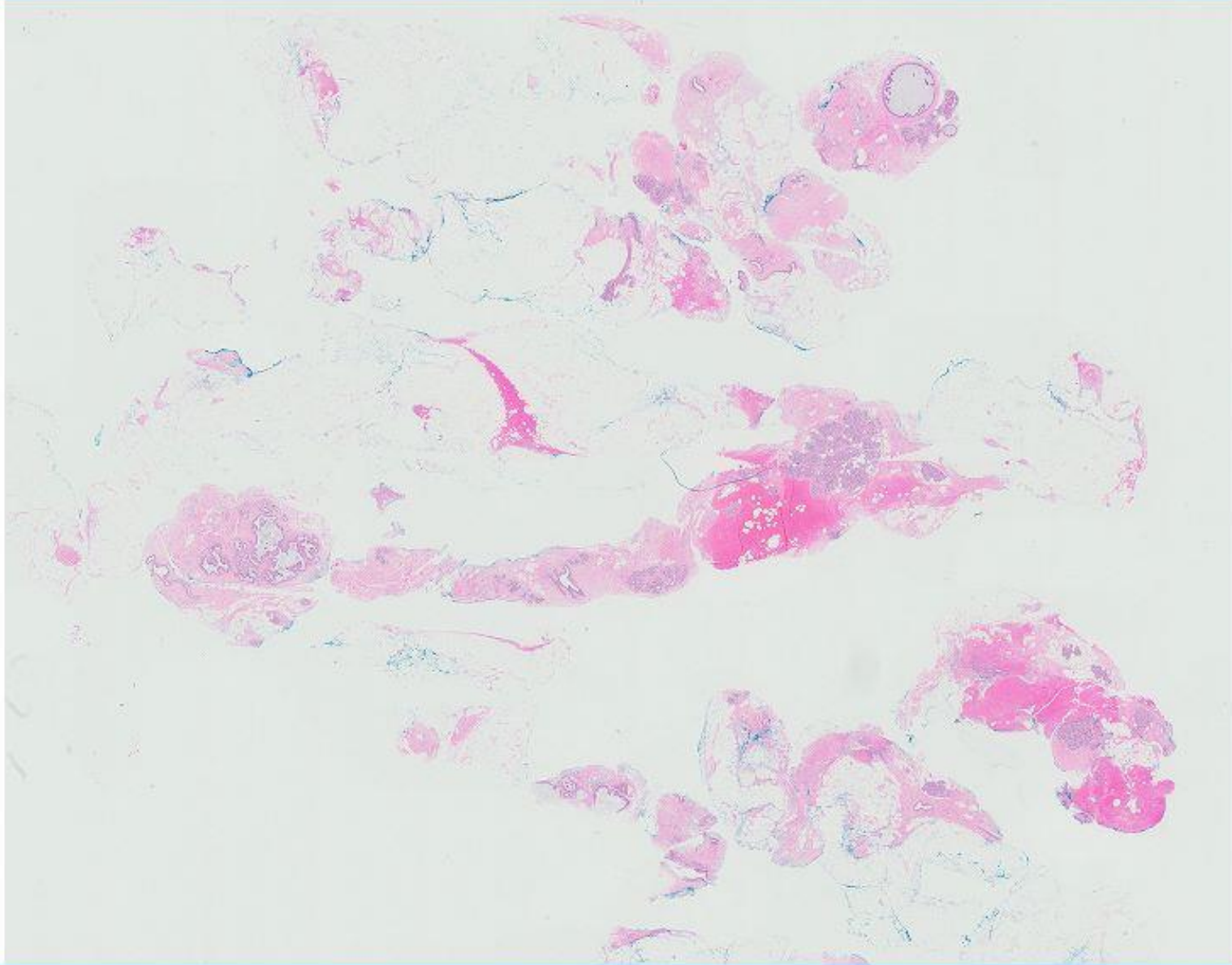


# *Case 40*

50 year old woman was found to have right breast (deep central) indeterminate calcifications on screening mammography.

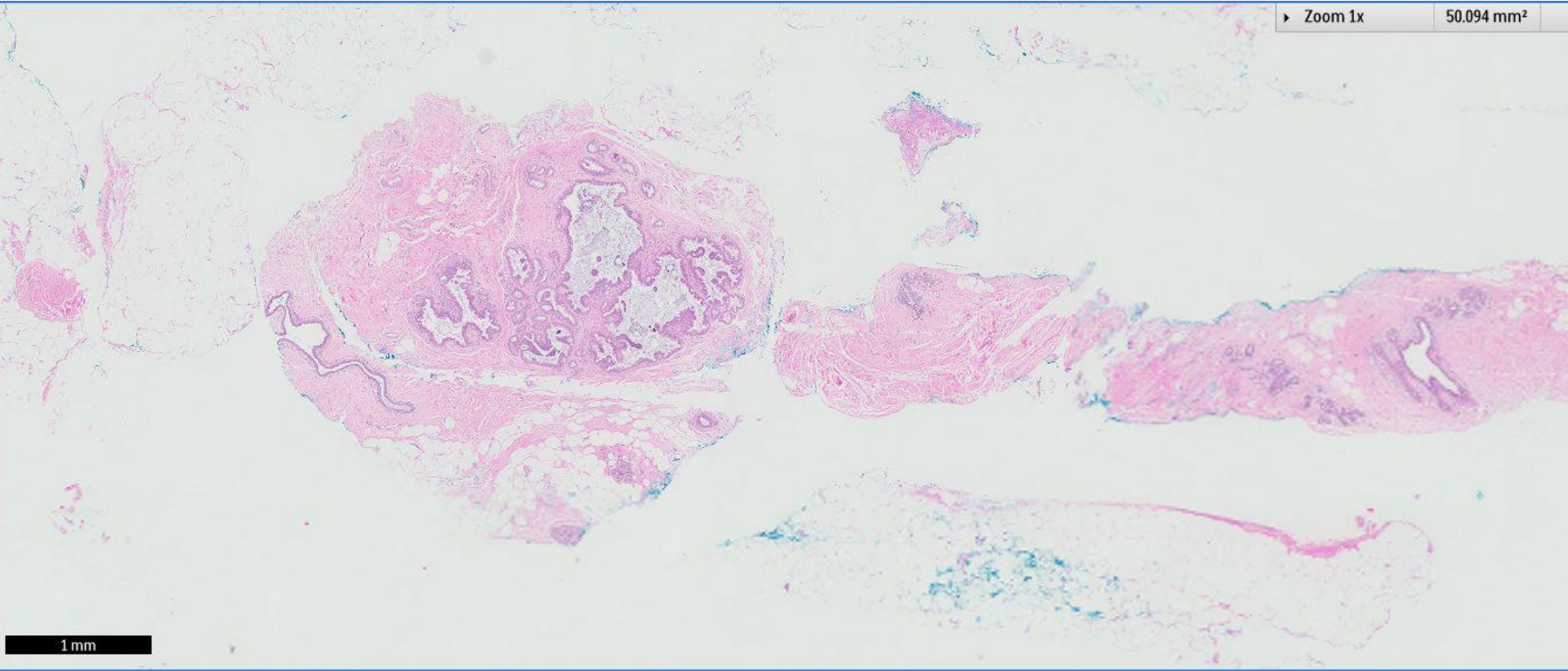
Stereotactic mammotome biopsy was performed.





► Zoom 1x

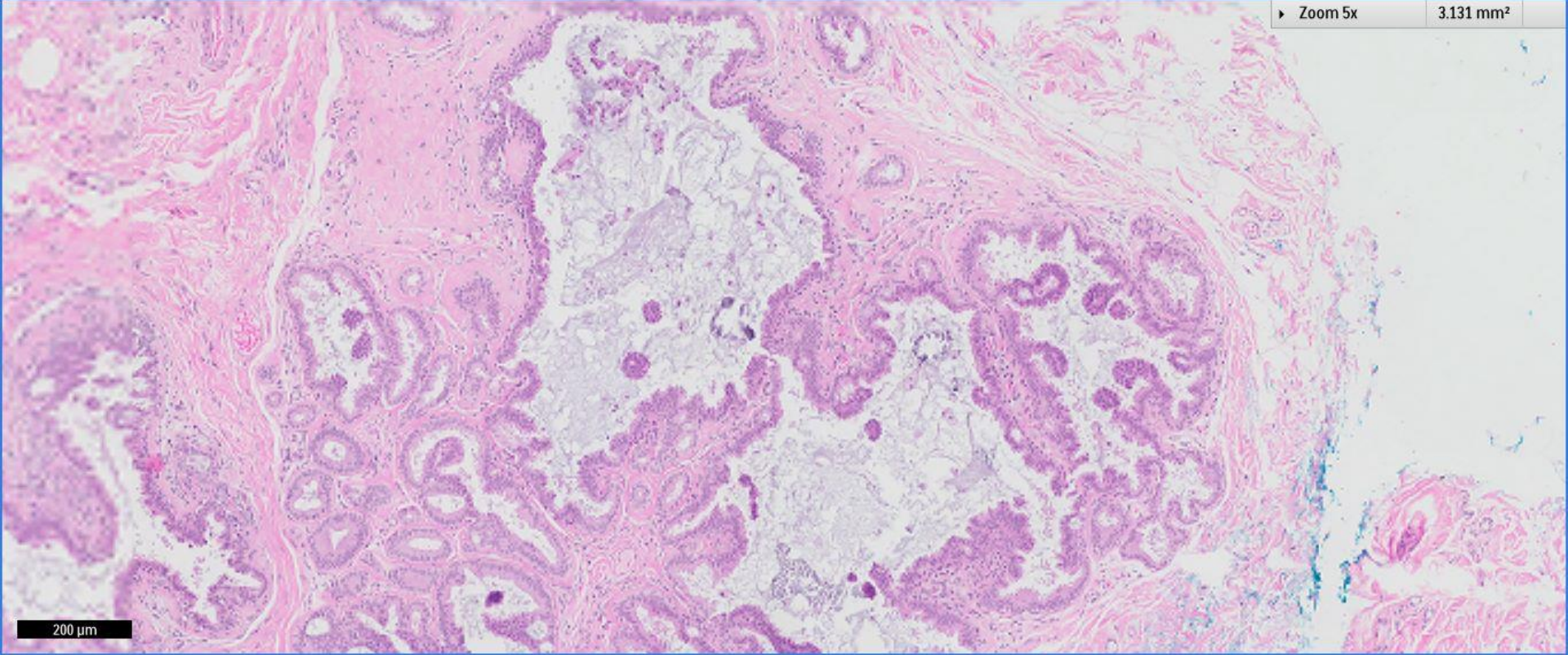
50.094 mm<sup>2</sup>



1 mm

▶ Zoom 5x

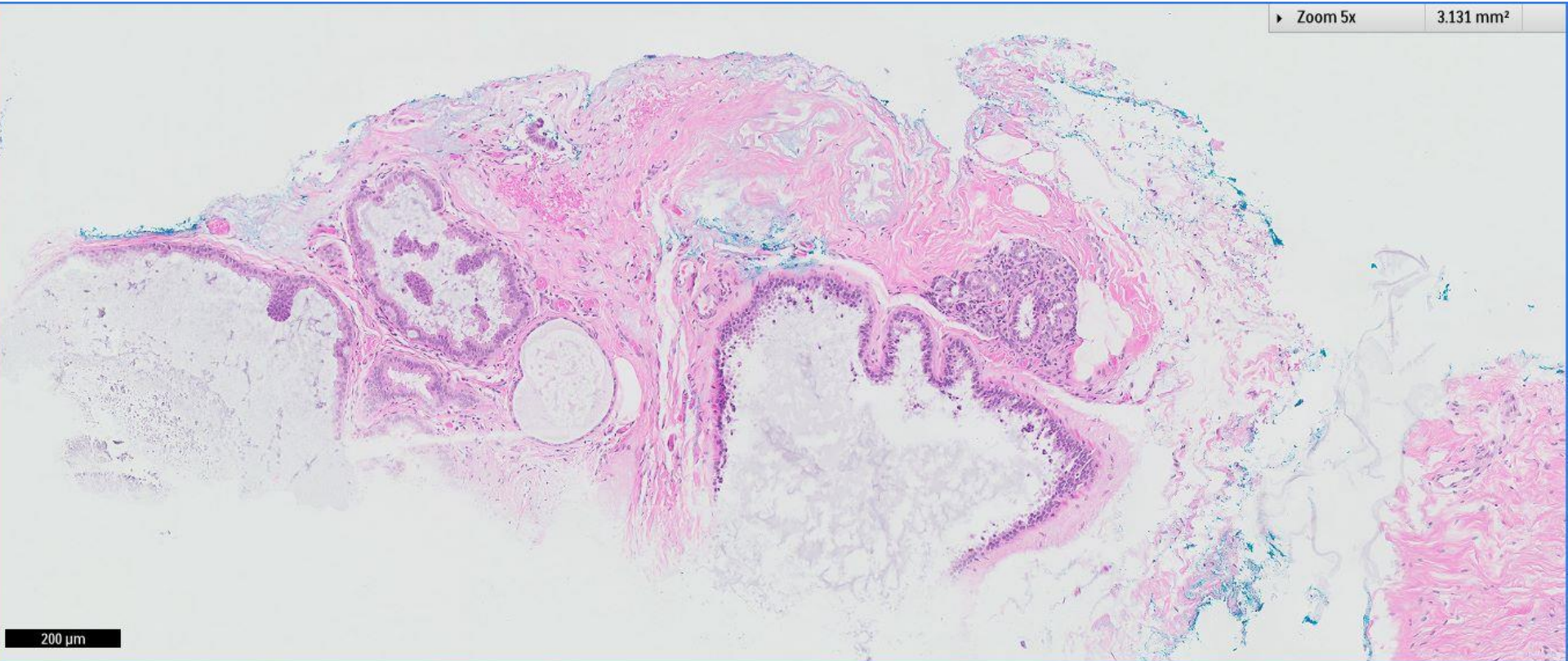
3.131 mm<sup>2</sup>



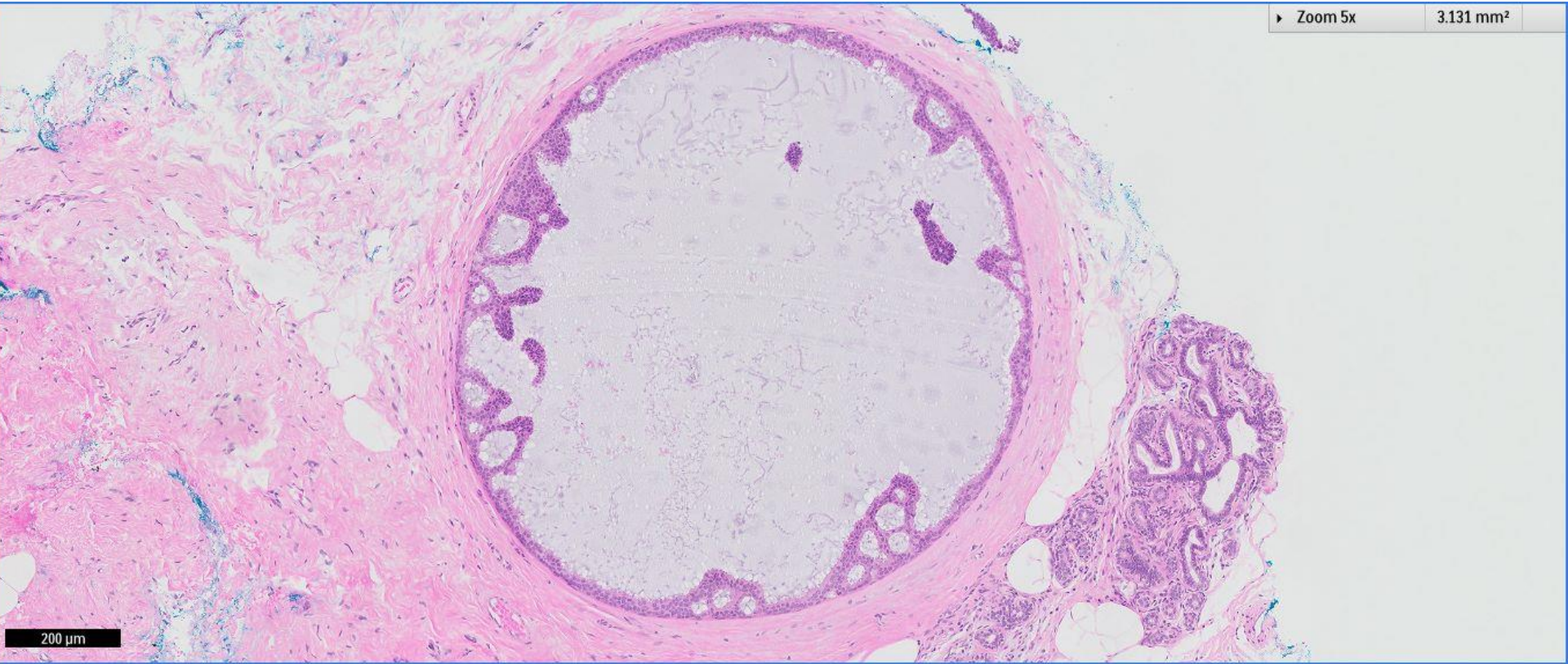
200 μm

► Zoom 5x

3.131 mm<sup>2</sup>



200  $\mu$ m



► Zoom 5x 3.131 mm<sup>2</sup>

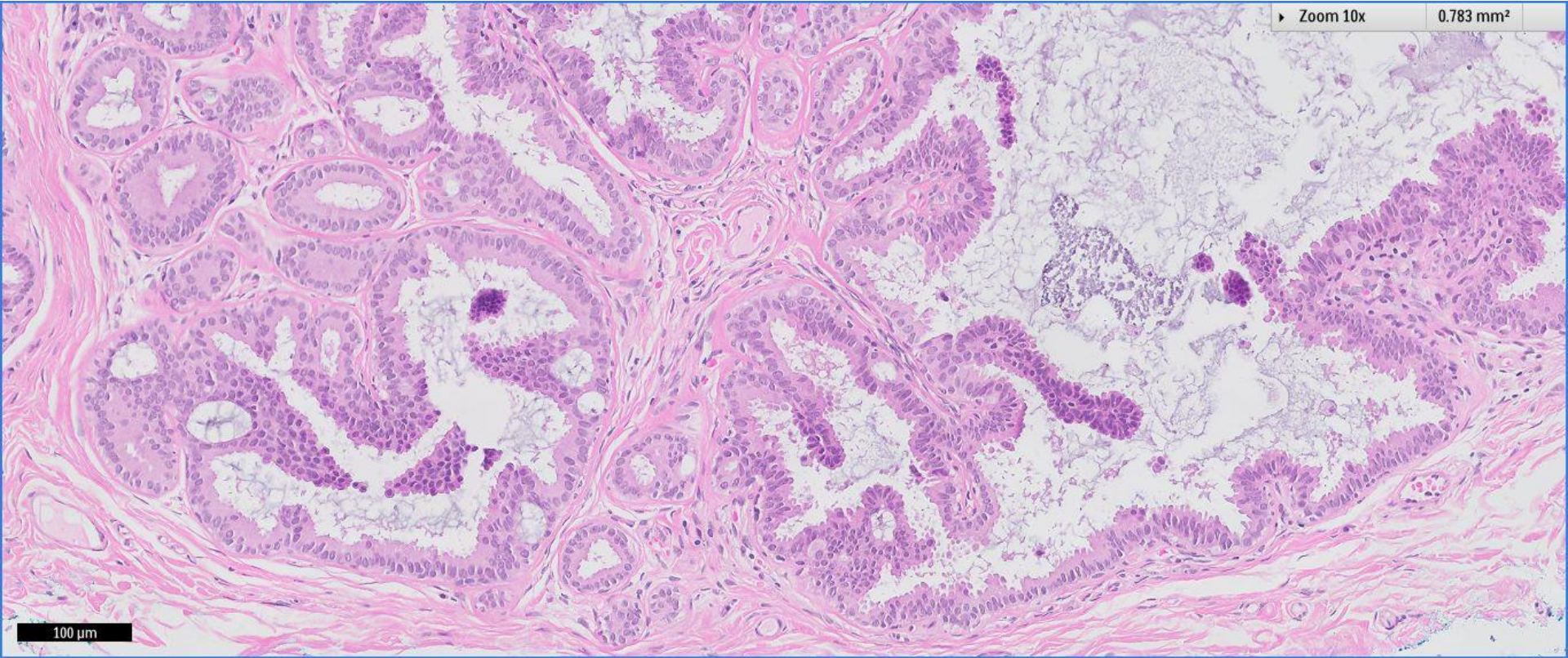
200 μm



04 06 2008

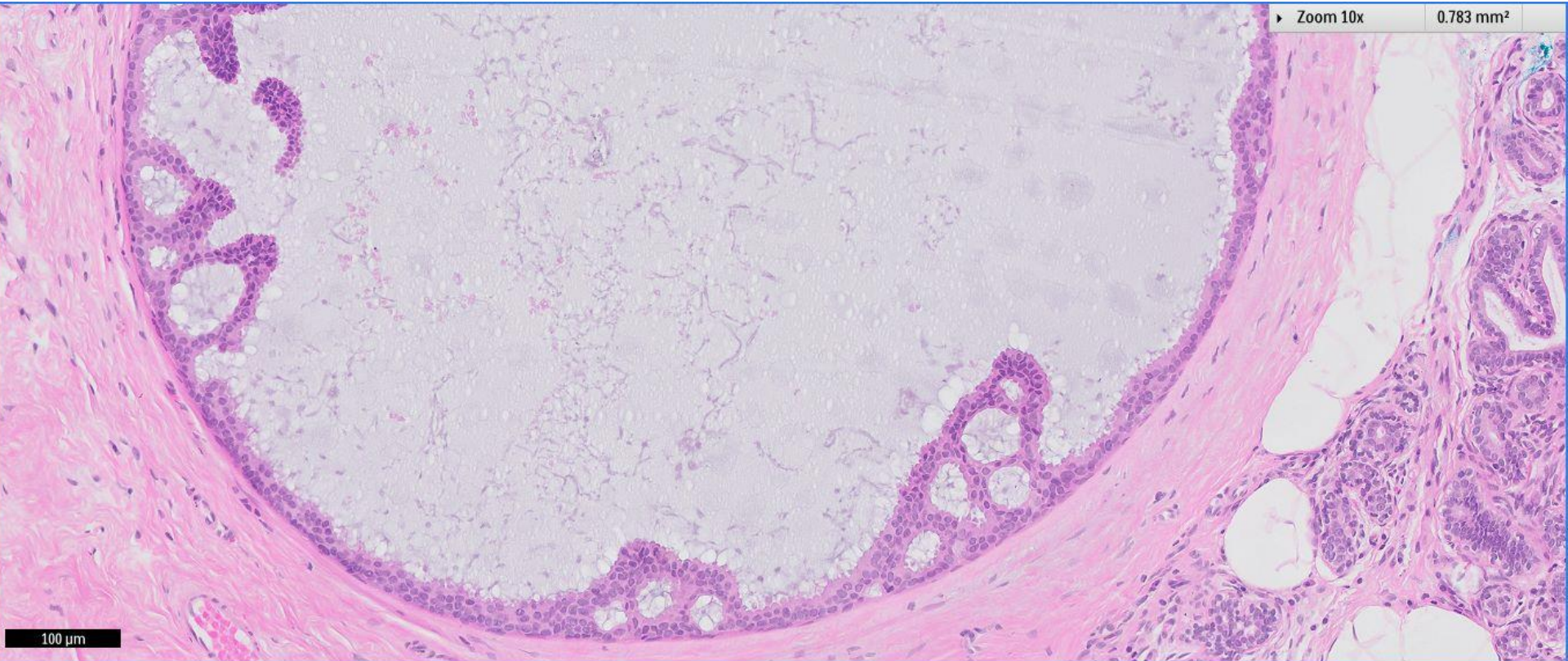
► Zoom 10x

0.783 mm<sup>2</sup>



100 μm

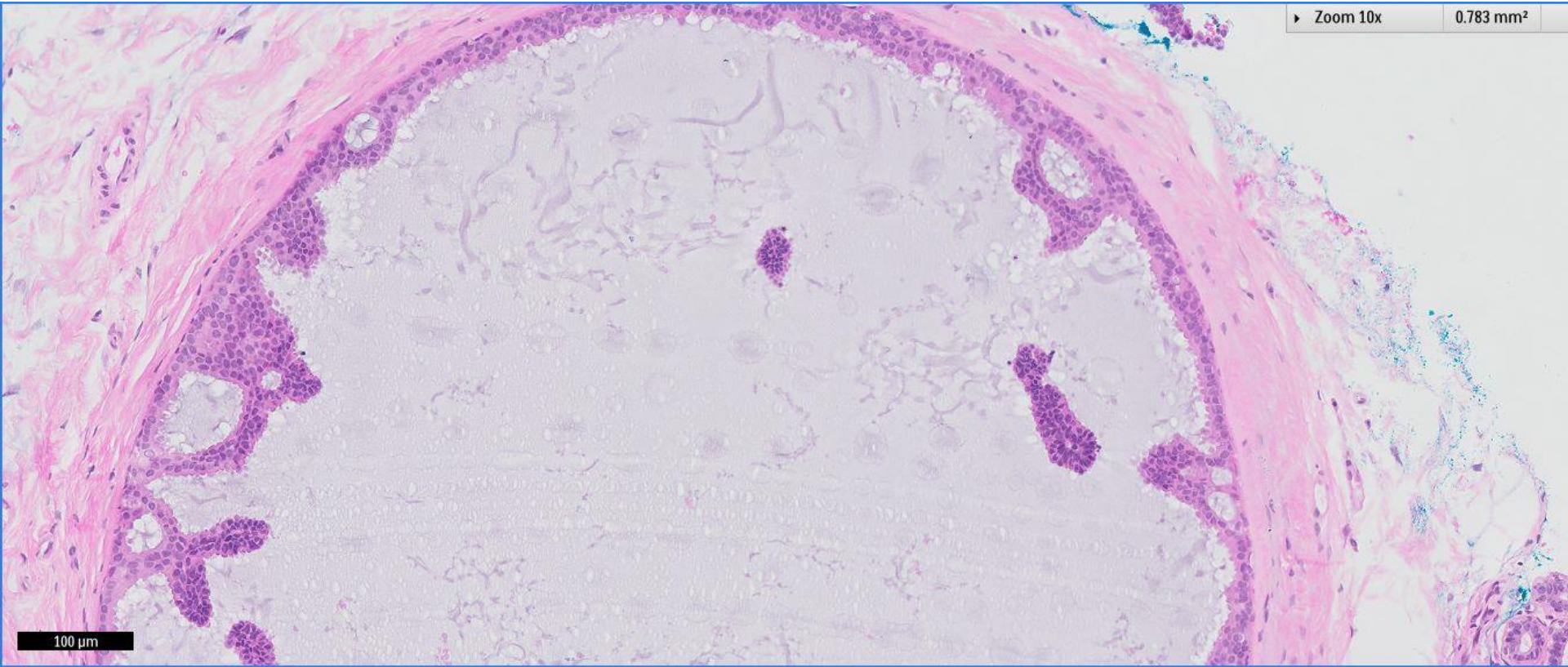




Zoom 10x

0.783 mm<sup>2</sup>

100 μm



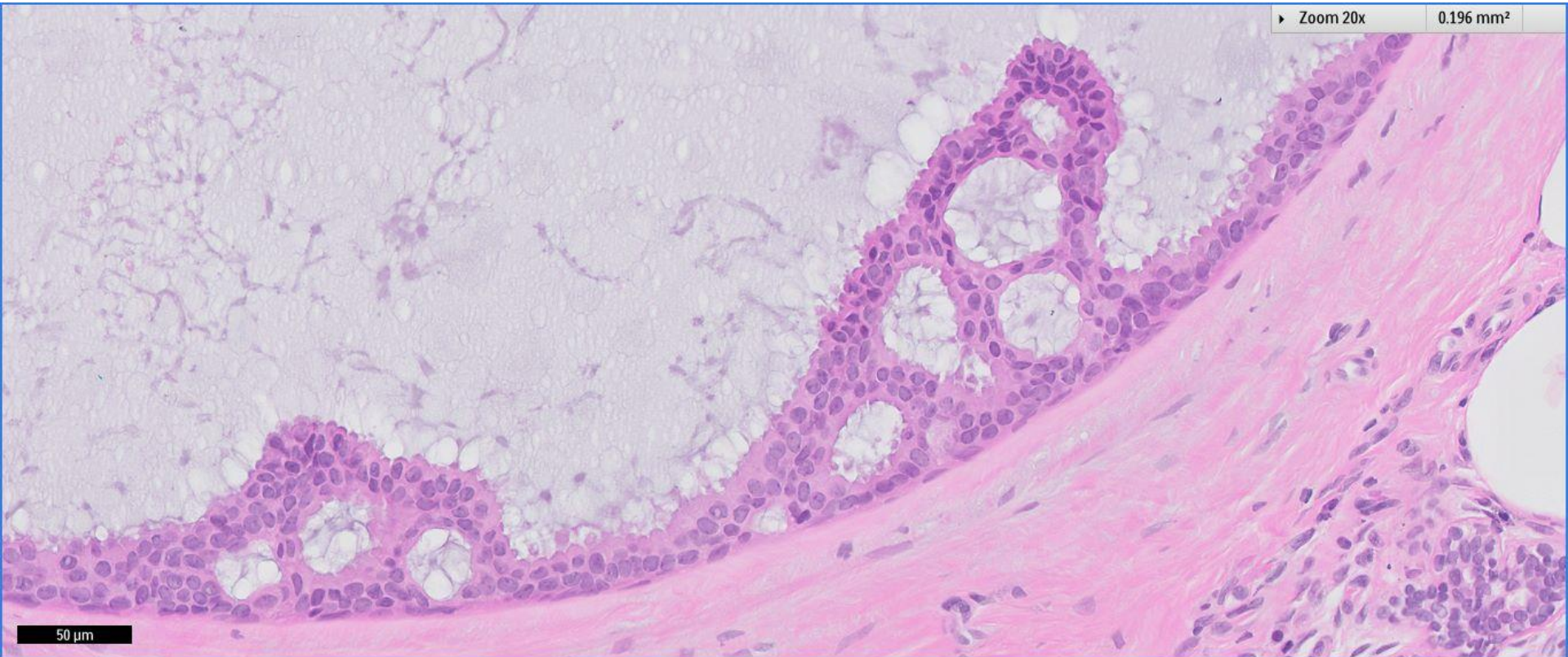
► Zoom 10x

0.783 mm<sup>2</sup>

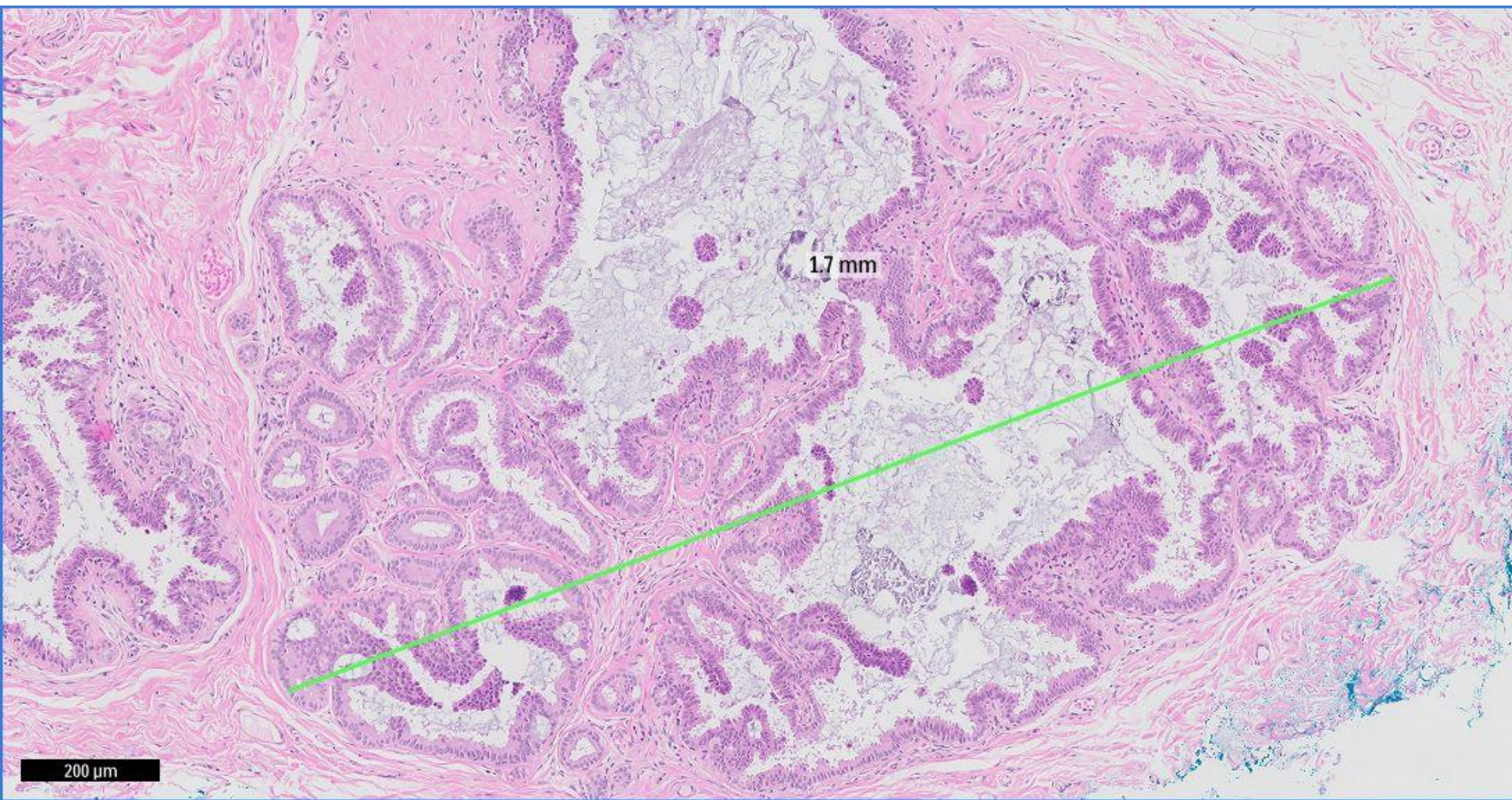
100 μm

► Zoom 20x

0.196 mm<sup>2</sup>

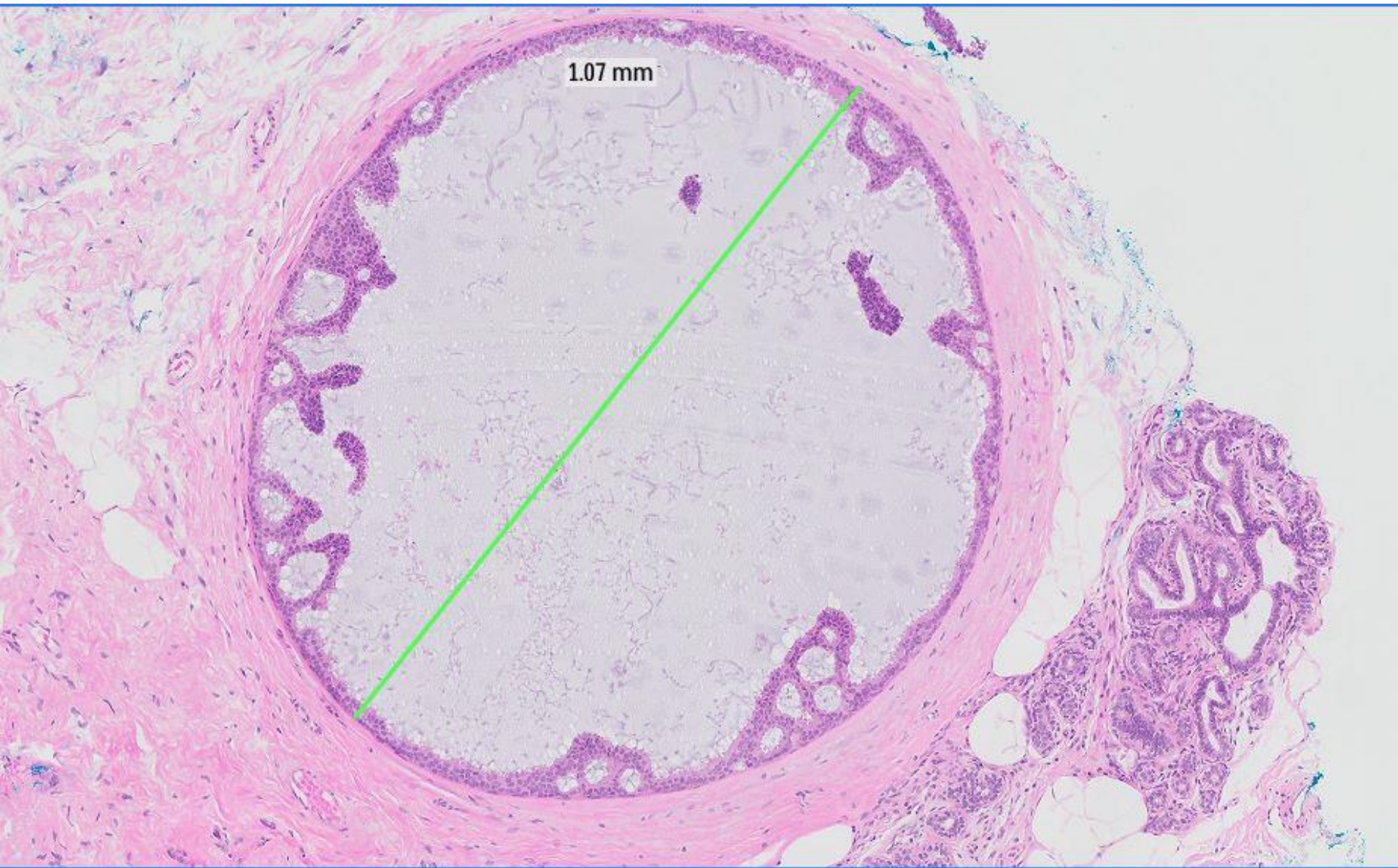


50  $\mu$ m



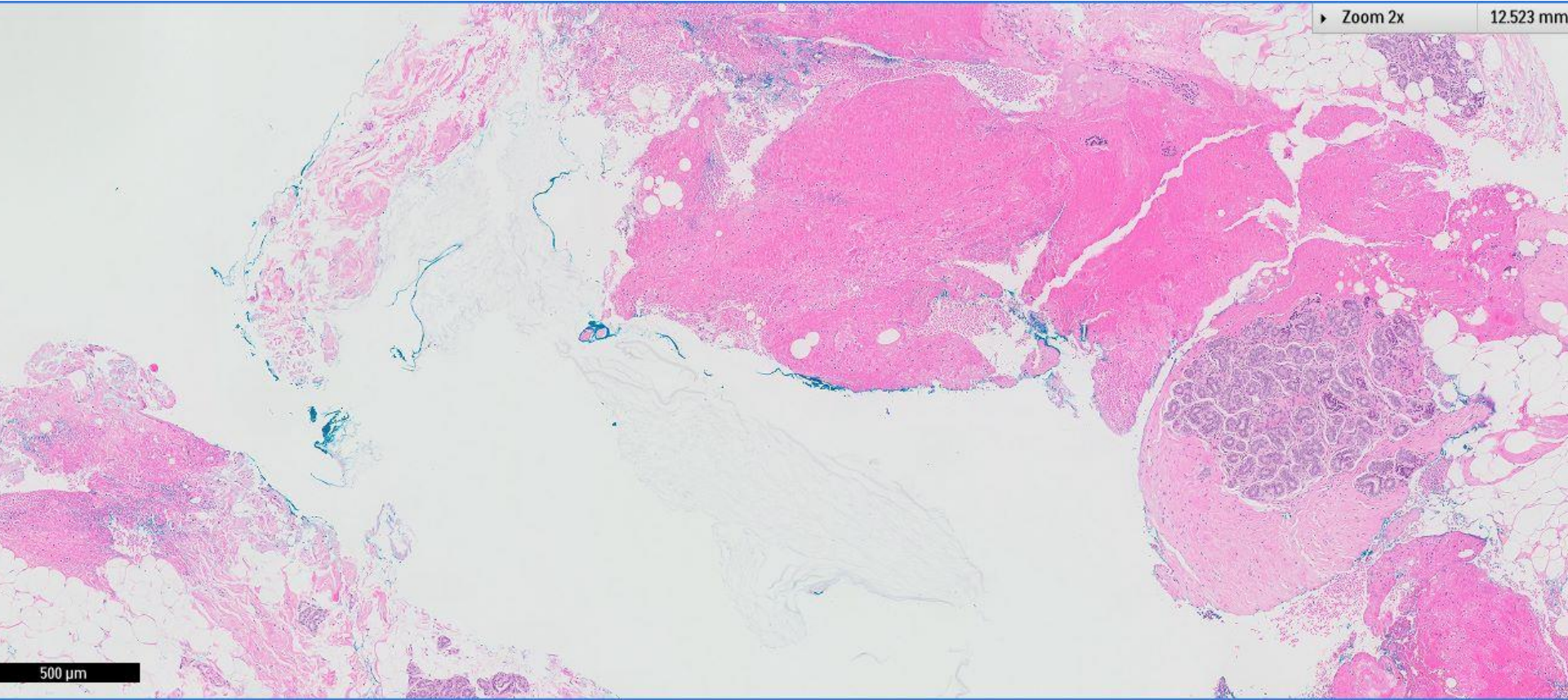
1.7 mm

200 μm



▶ Zoom 2x

12.523 mm



500 μm

Stereotactic mammotome biopsy, right  
breast calcifications:

*Mucocele-like lesion with atypical  
ductal hyperplasia*



# Subsequent excision

- Right breast, hookwire localisation excision:  
*Fibrocystic changes; no malignancy or residual atypical hyperplasia*





# Mucocele-like lesion

- Descriptive term without biological implications.
- Biology dictated by the nature of epithelium lining the cyst walls.



**TABLE 18.1 Findings at Surgical Excision of Lesions with Radiology-Pathology Concordance Yielding Mucin with or without Epithelial Atypia in a Needle Core Biopsy**

Study	Total CBX with EXC	CBX without Atypia			CBX with Atypia			Total Patients with Carcinoma or ADH
		Cases	ADH at EXC/Cases [%]	Carcinoma at EXC/Cases [%]	Cases	Carcinoma at EXC/Cases [%]	Carcinoma at EXC/Total CBX	
Renshaw <sup>104</sup>	8	3	1/3 [33%]	0/3	5	0/5	0/8	6/8 [75%]
Wang <sup>105</sup>	11	7	0/7	0/7	4	0/4	0/11	4/11 [36%]
Begum <sup>106</sup>	23	10	0/10	1 <sup>a</sup> /10 [ <sup>a</sup> 10%]	13	1/13 [7.6%]	2/23 [8.6%]	2 <sup>a</sup> /23 [8.6%]
Sutton <sup>108</sup>	38	22	Not specified	0/22	16	5/16 [31%]	5/38 [13%]	5/38 [13%]
Edelweiss <sup>107</sup>	28	10	4/10 [40%]	0/10	18	4/18 [22%]	4/28 [14%]	8/28 [28%]
<i>Total</i>	108	52	5/30 [16.6%]	1 <sup>a</sup> /52 [1.9%]	56	10/56 [17.3%]	11/100 [11%]	25/108 [23%]

<sup>a</sup>One case with discordant radiologic-pathologic findings.

CBX, core biopsy; EXC, surgical excision.

*Rosen's Breast Pathology 2014*



 Breast  
Pathology  
Course 2014

