

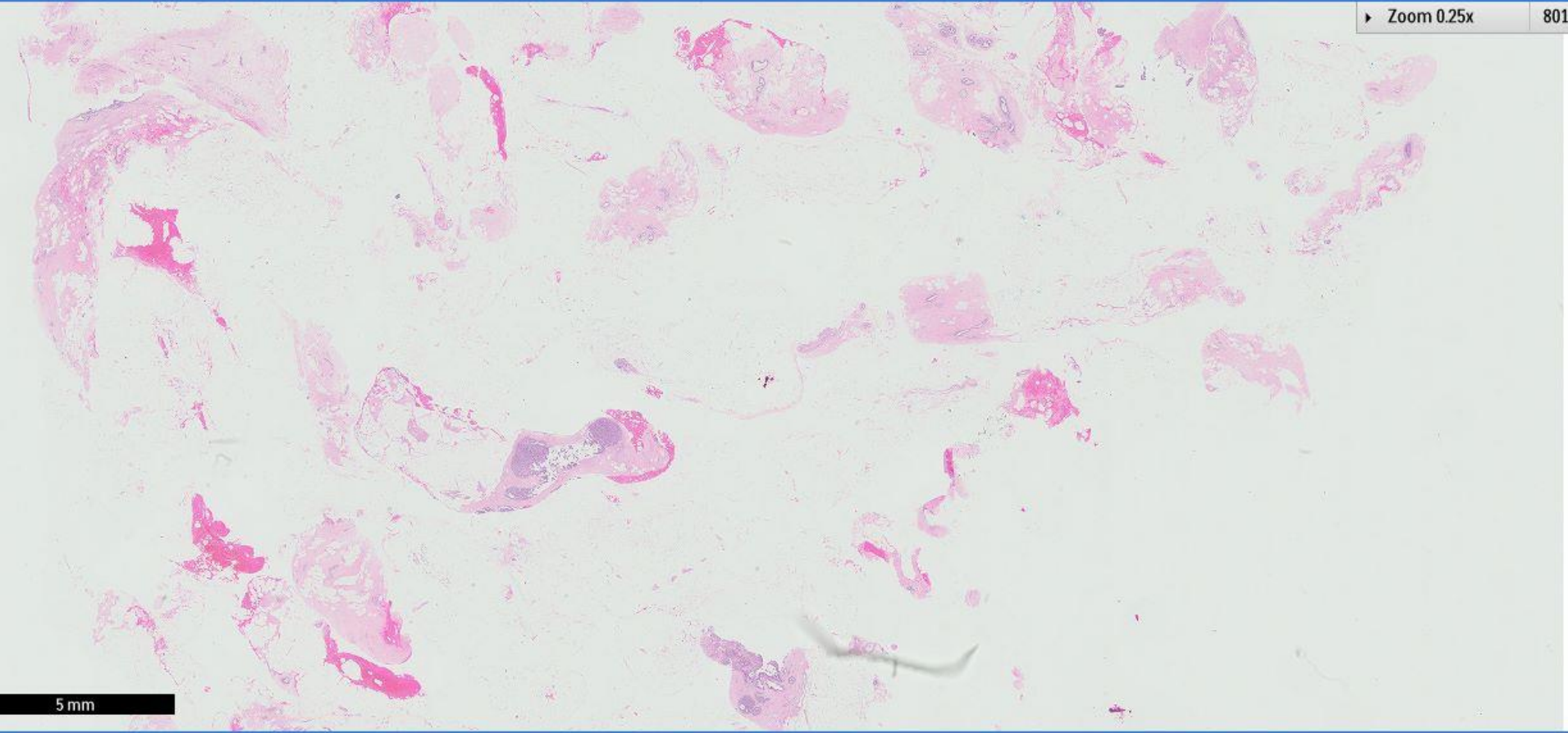
Case 39

72 year old woman underwent
mammotome biopsy of a left breast
lump.



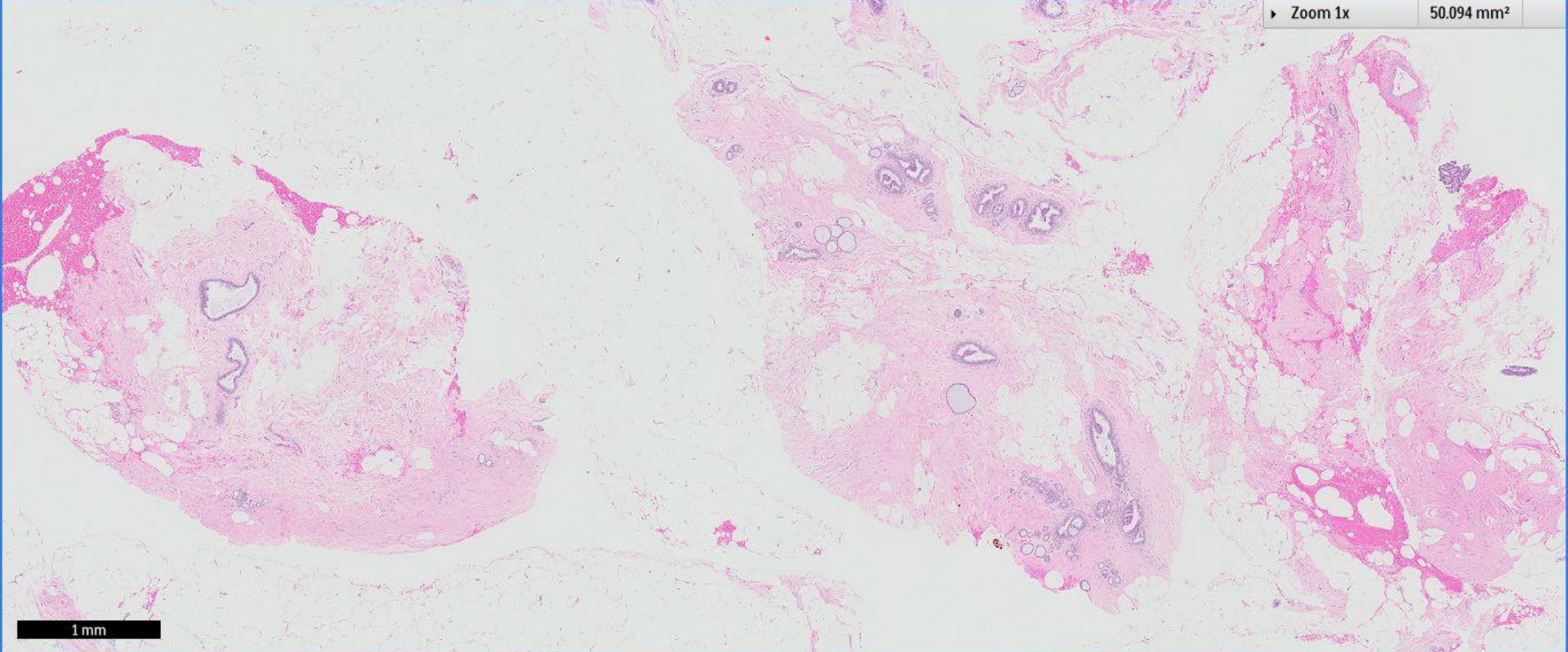
▶ Zoom 0.25x

801.5

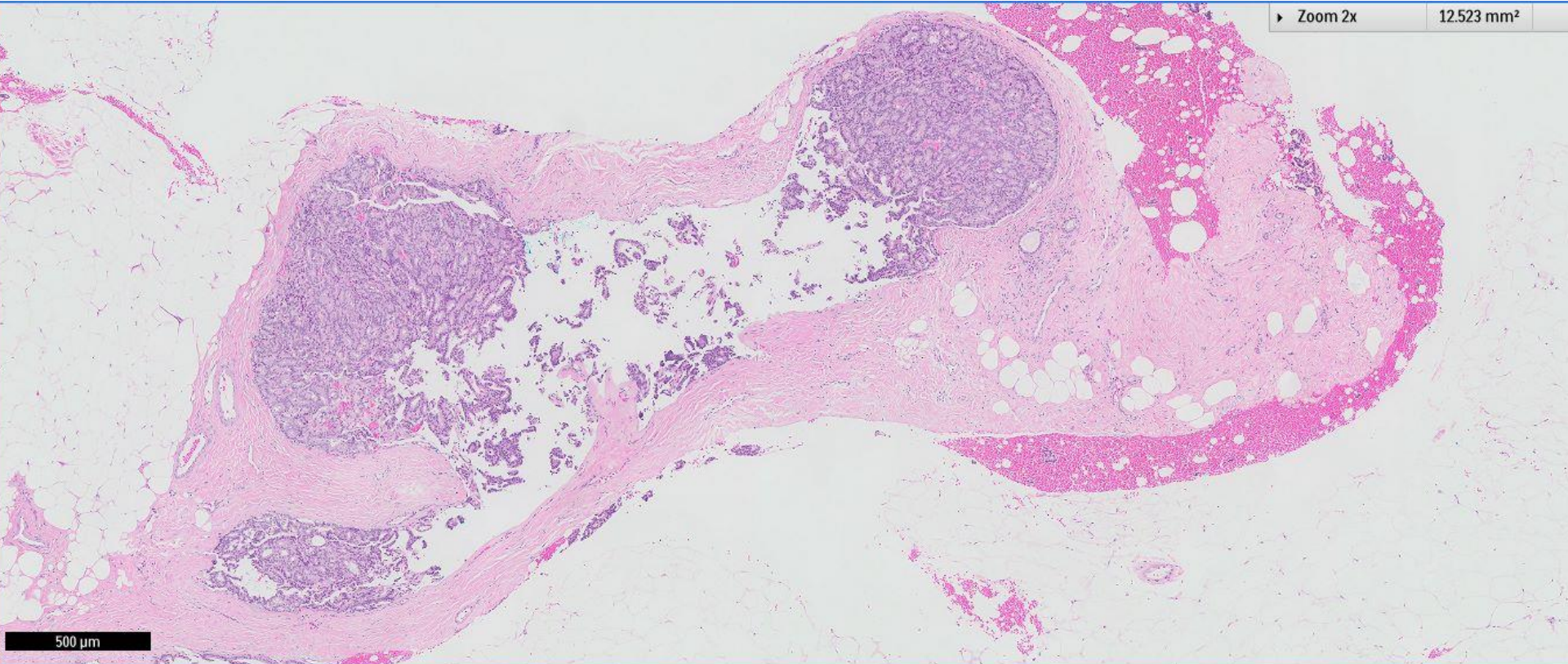


5 mm

▶ Zoom 1x 50.094 mm²



1 mm



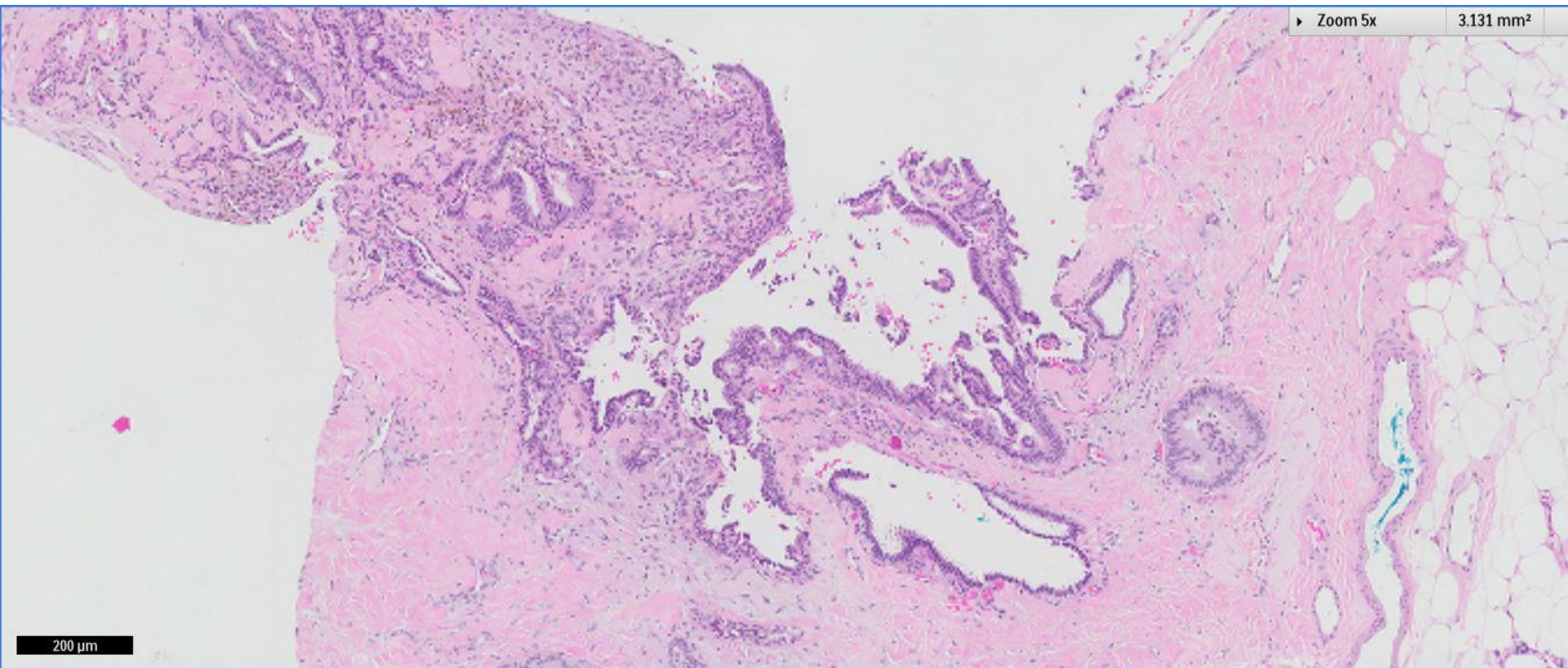
Zoom 2x

12.523 mm²

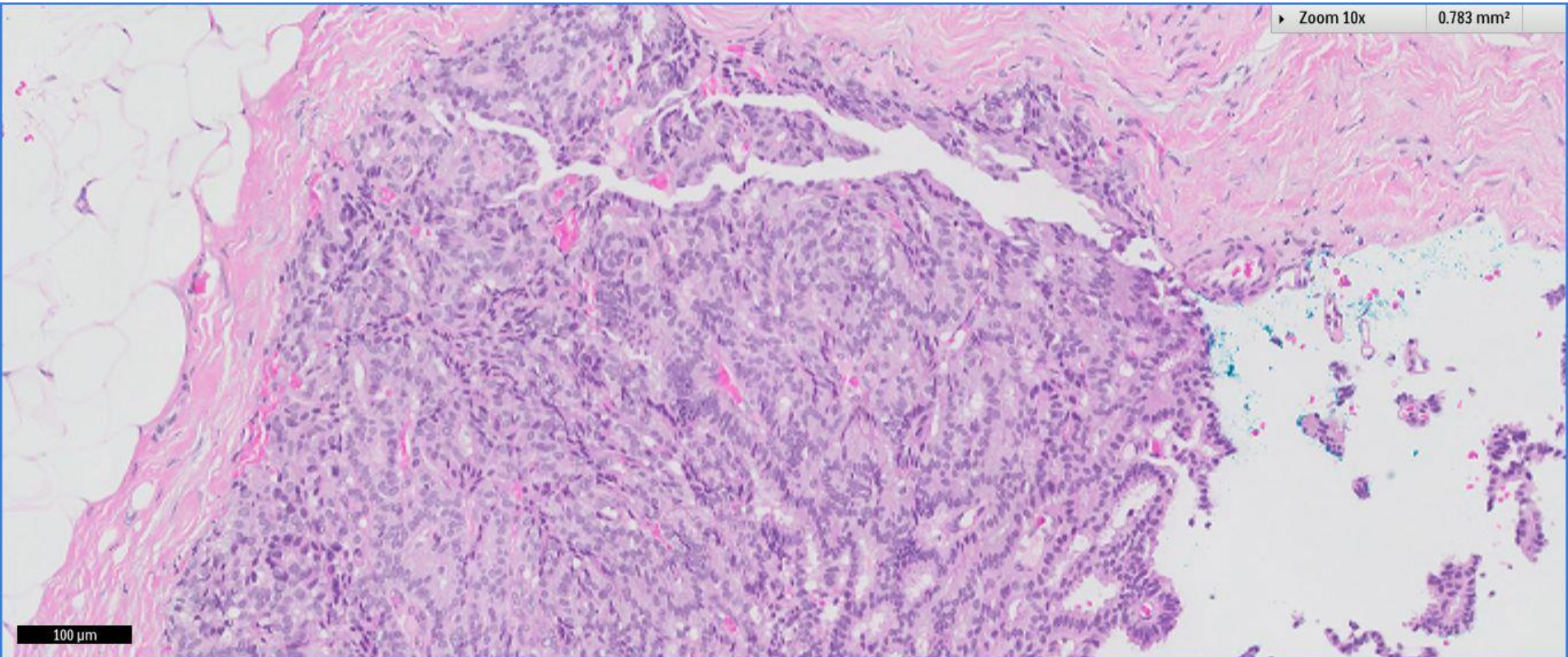
500 μm

Zoom 5x

3.131 mm²



200 μ m



► Zoom 10x

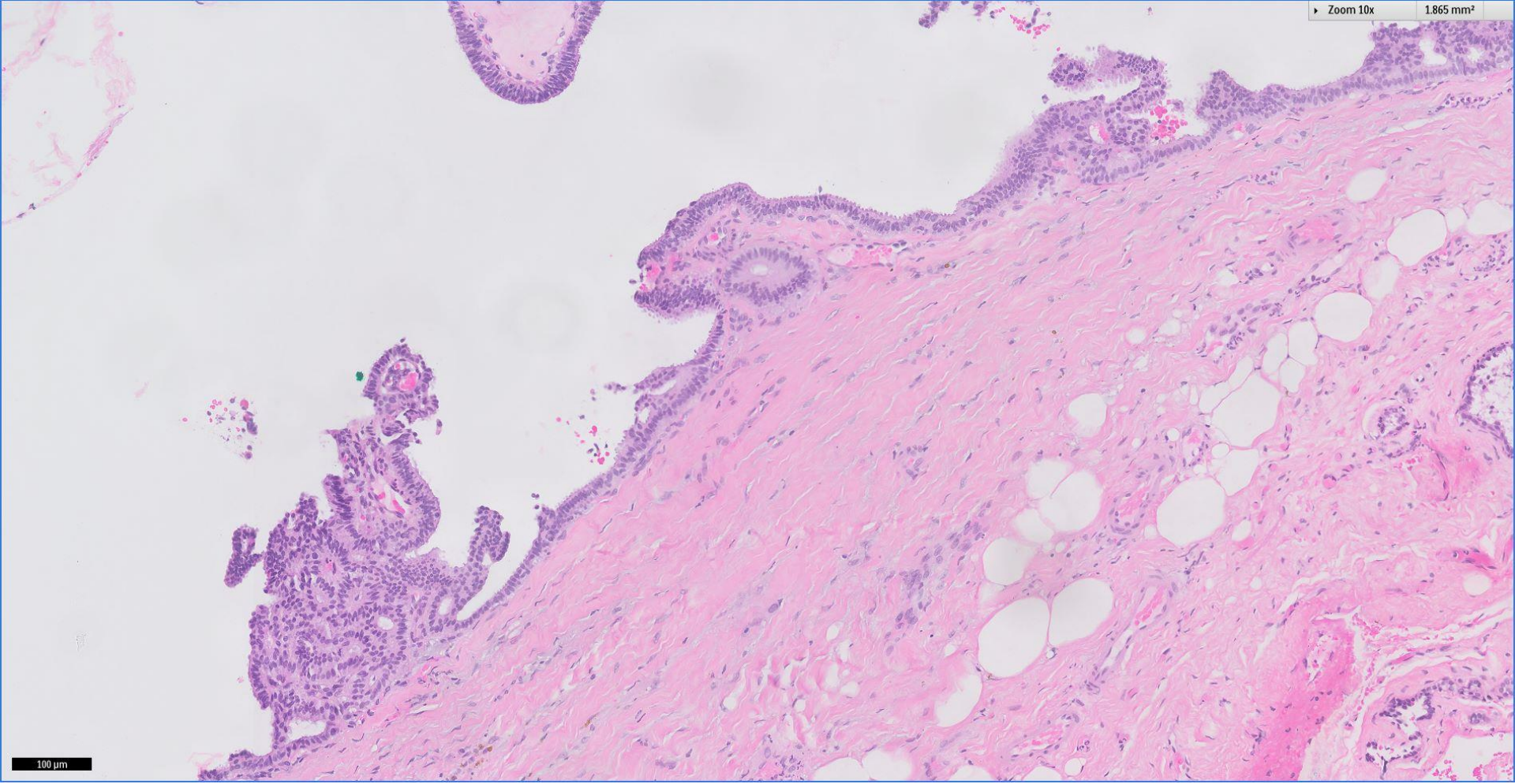
0.783 mm²

100 μm



Zoom 10x

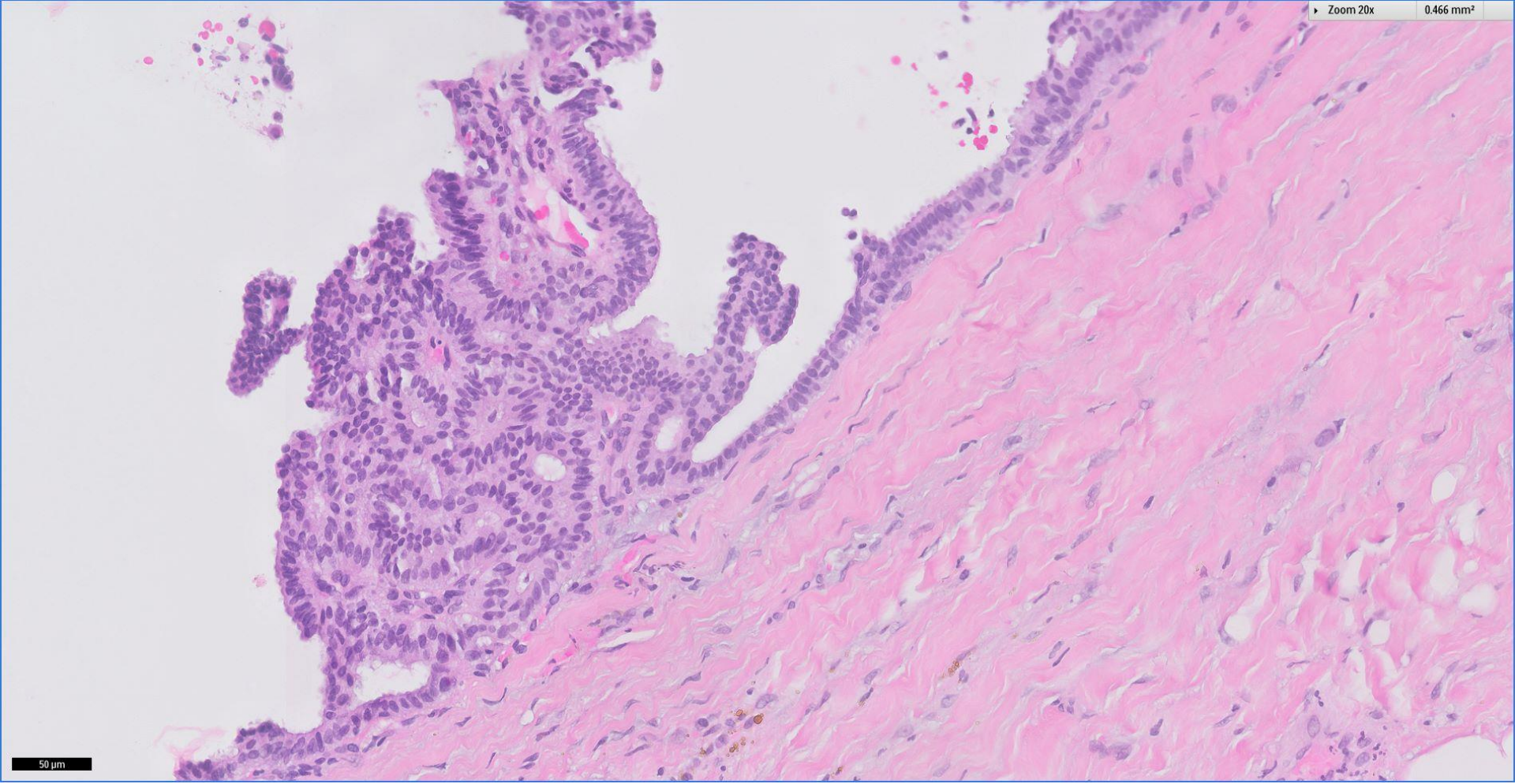
1.865 mm²



100 μm

Zoom 20x

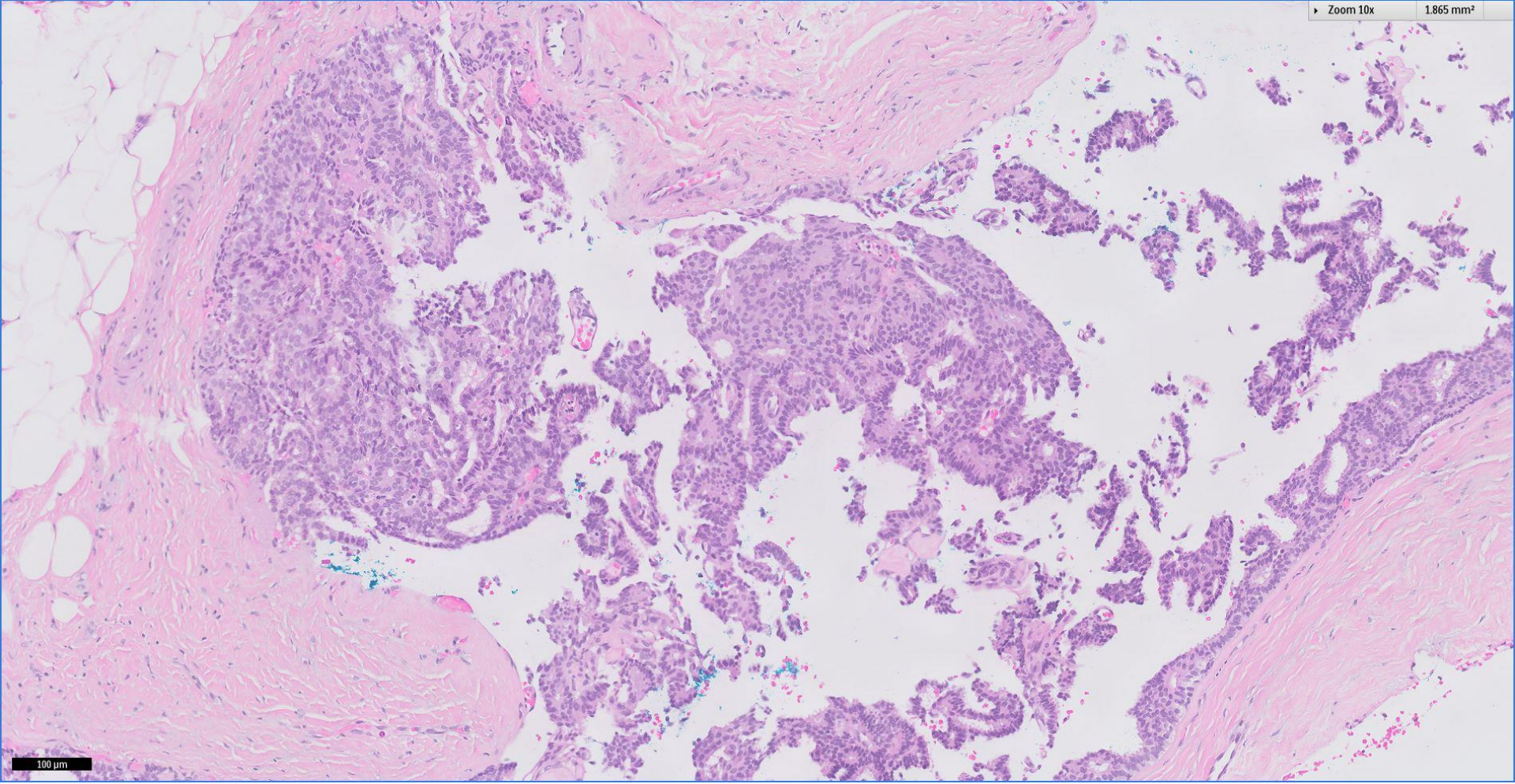
0.466 mm²



50 μm

Zoom 10x

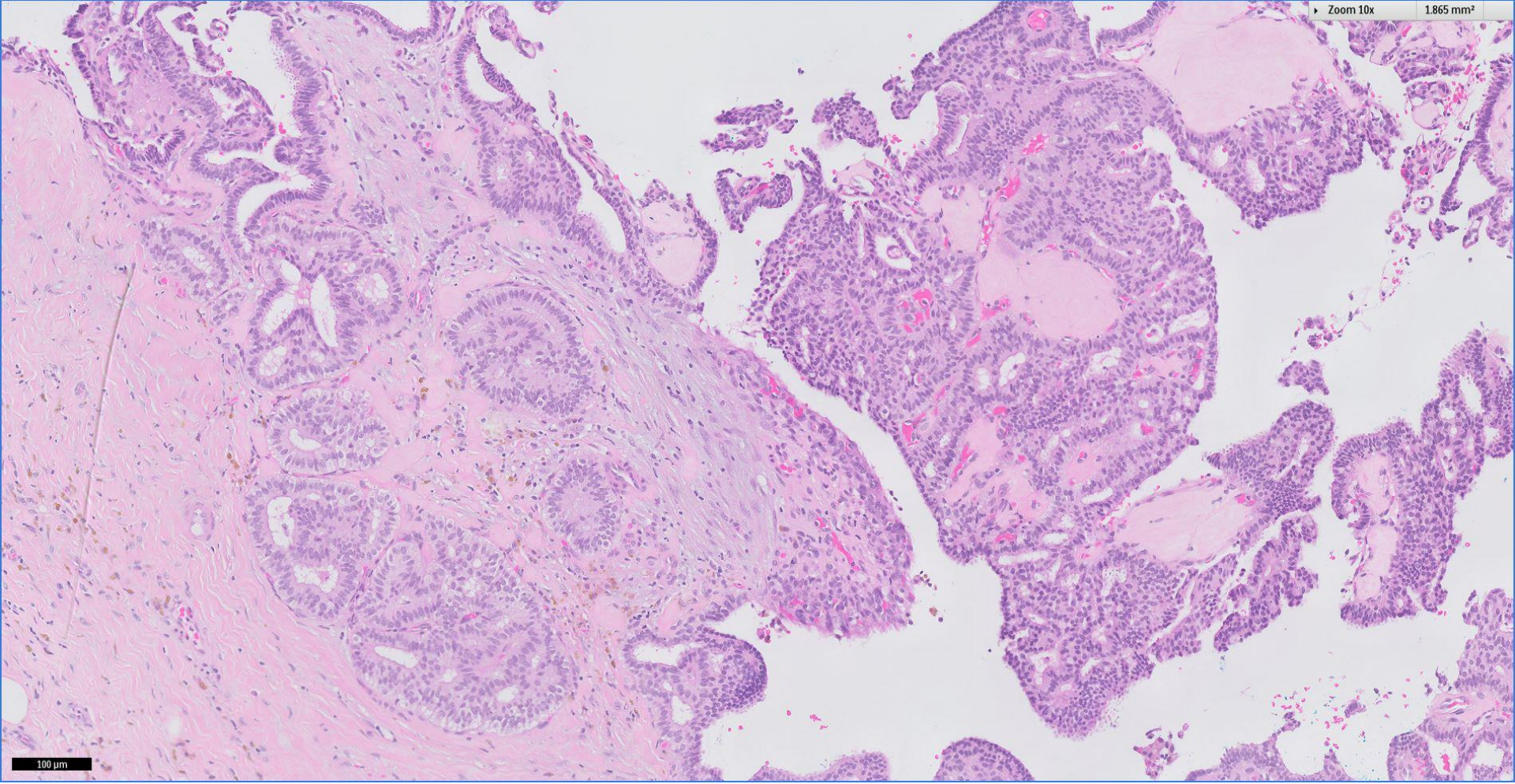
1.865 mm²



100 μm

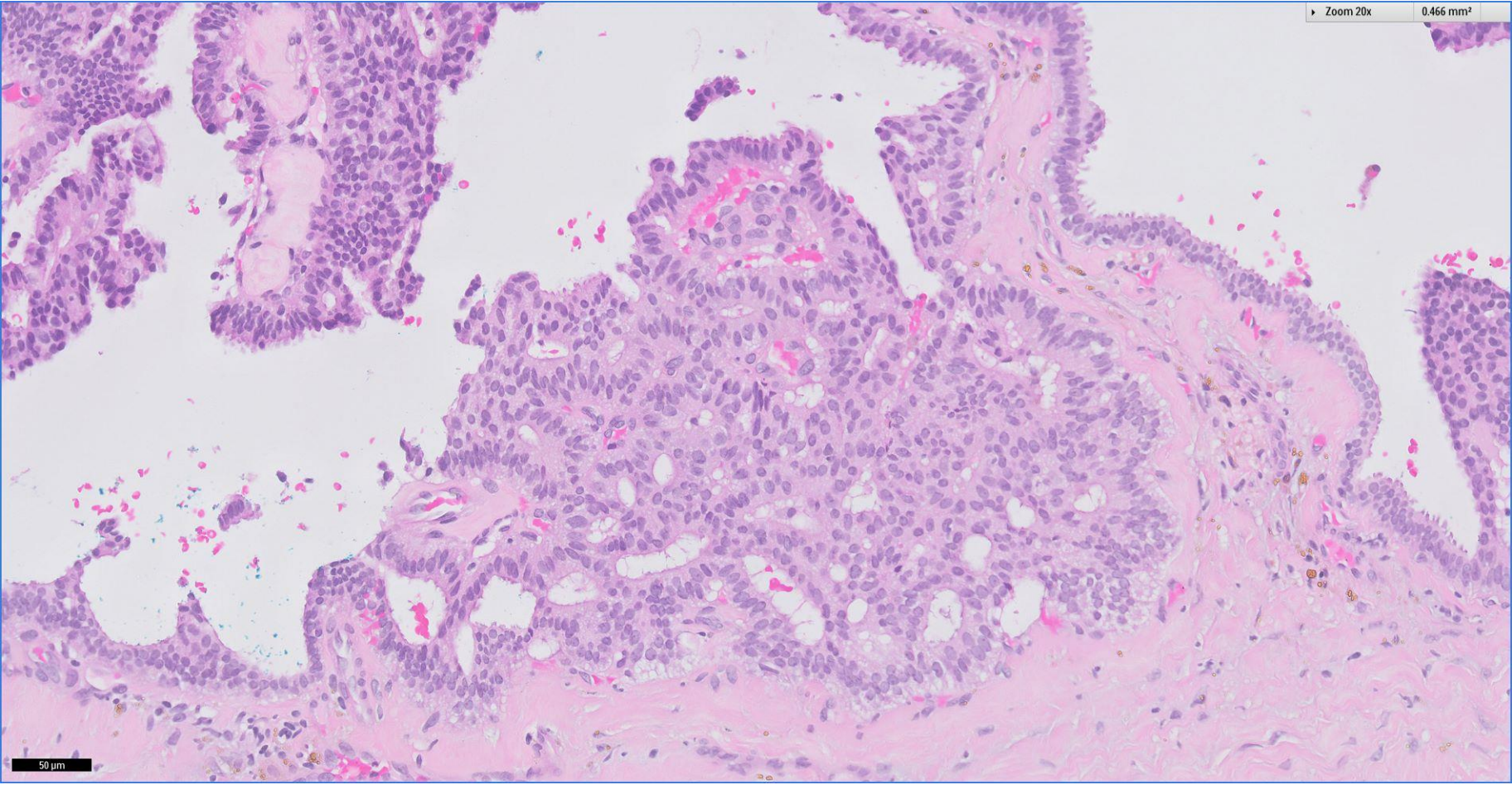
Zoom 10x

1.865 mm²

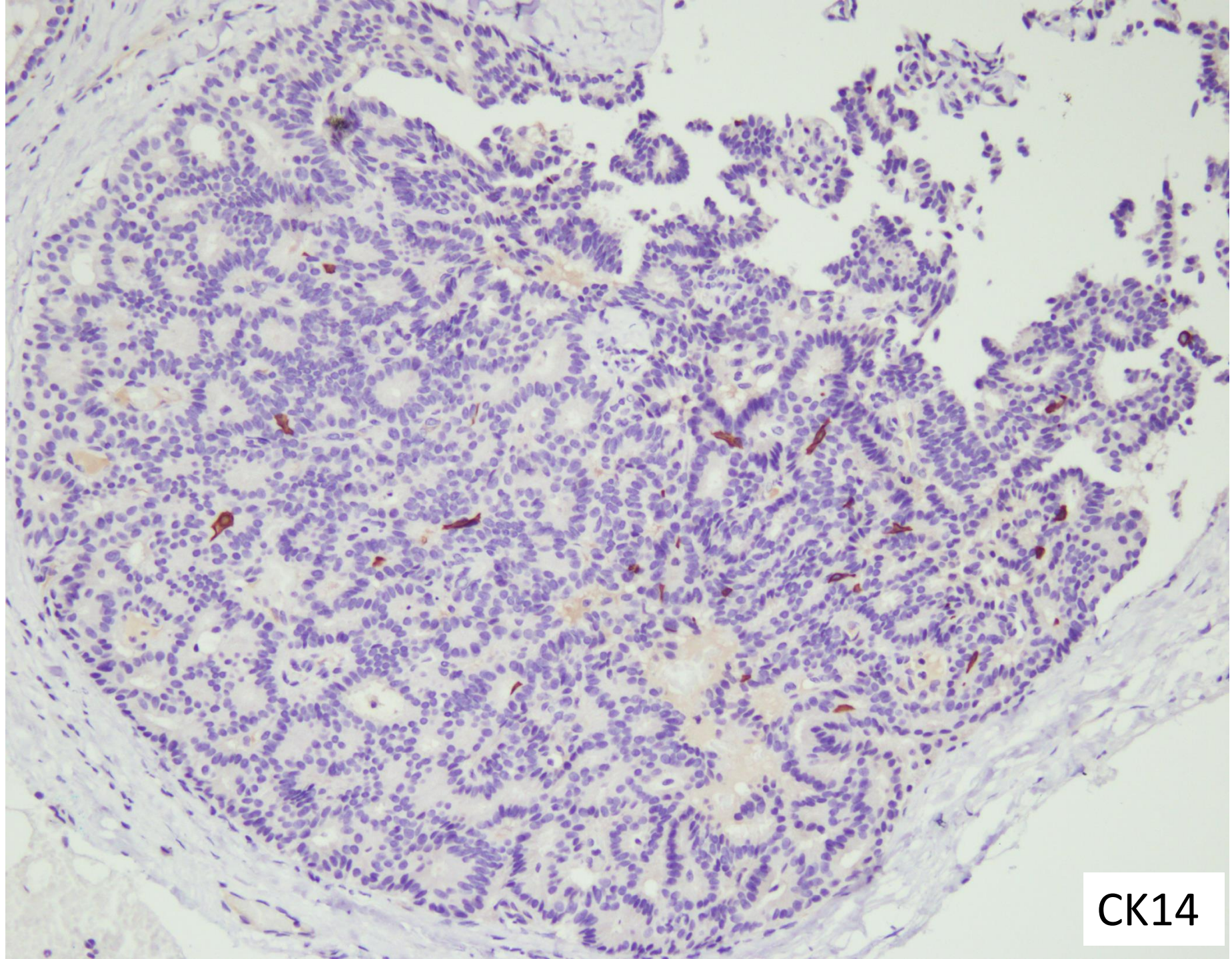


100 µm

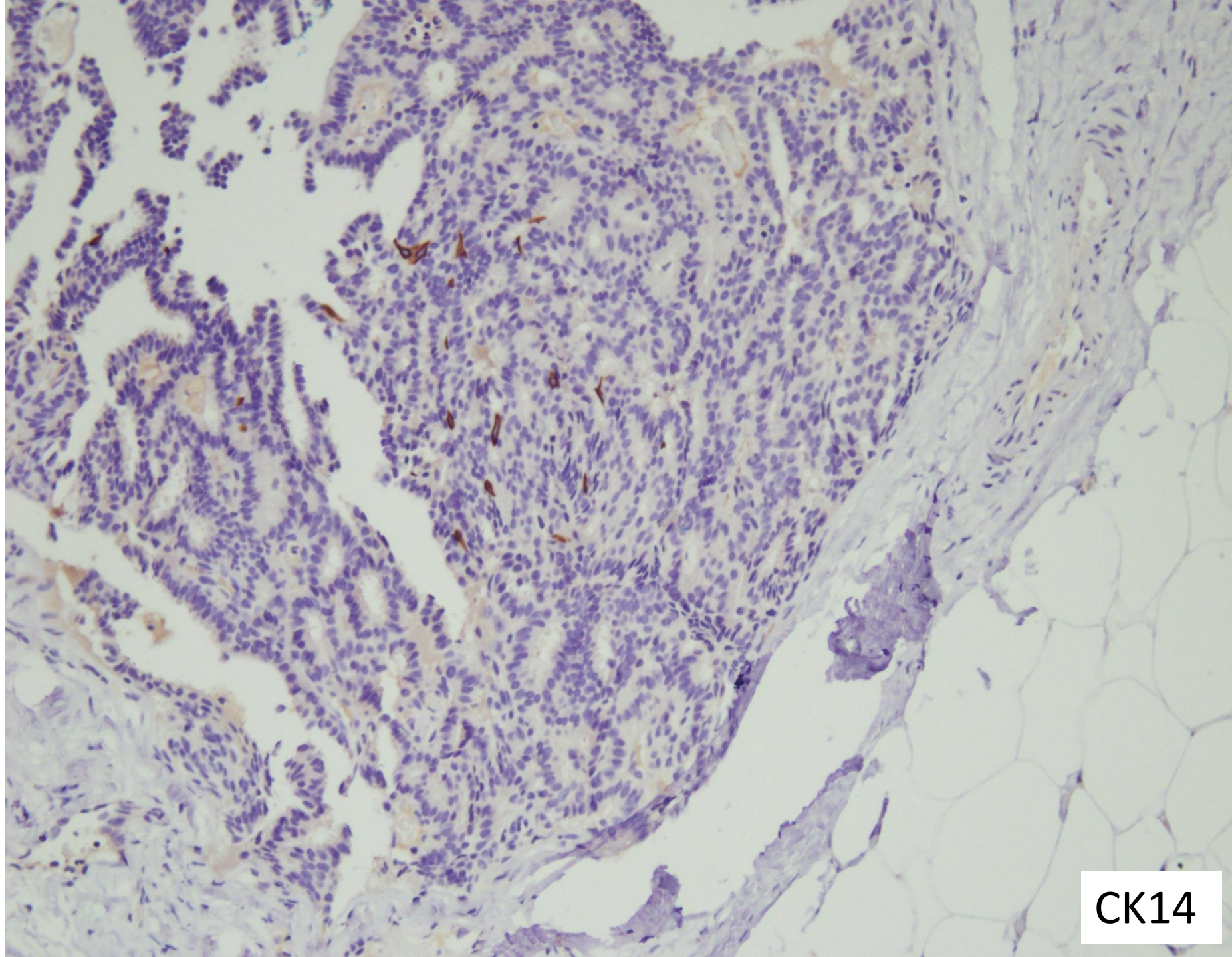
Zoom 20x 0.466 mm²



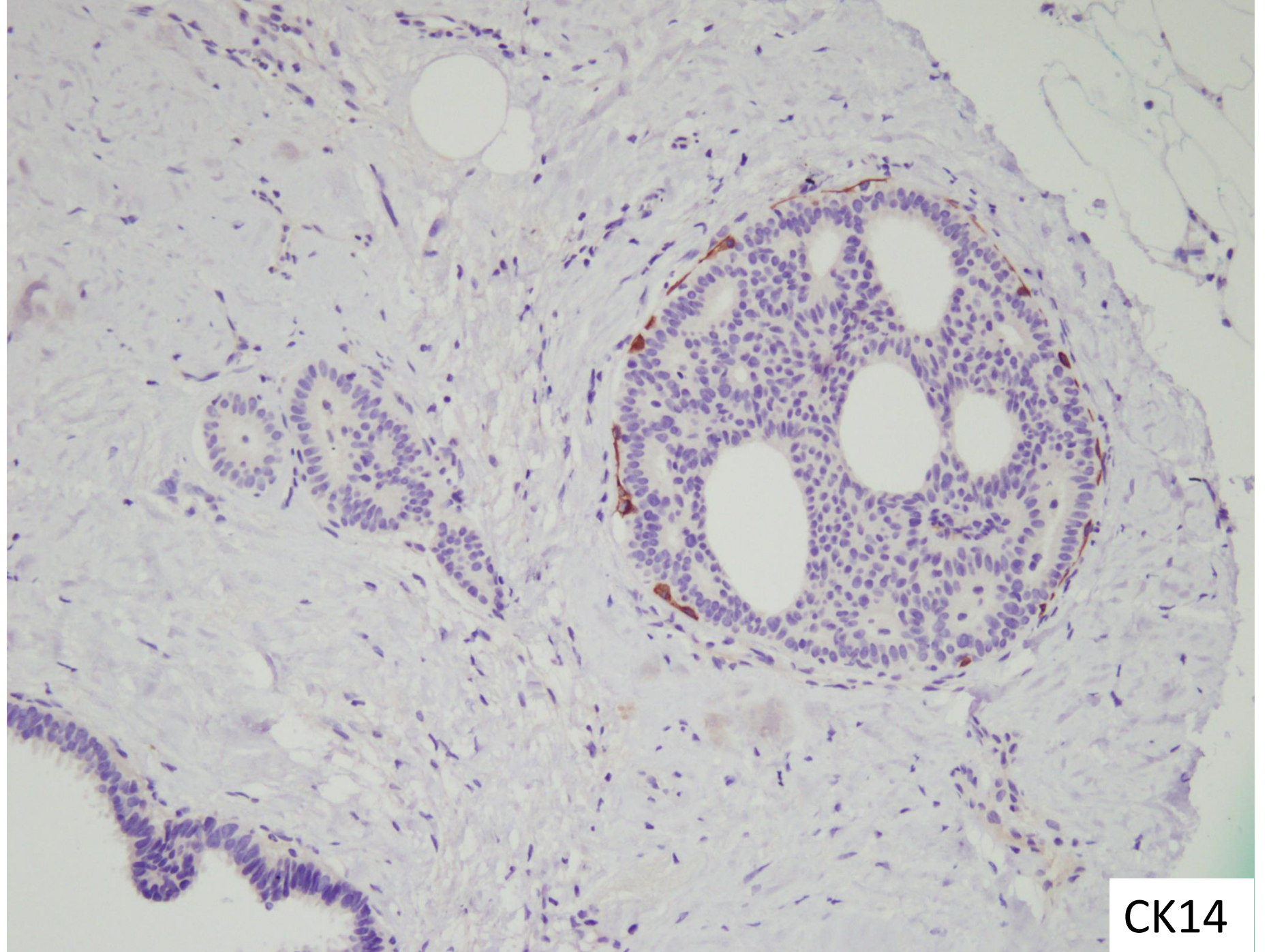
50 µm



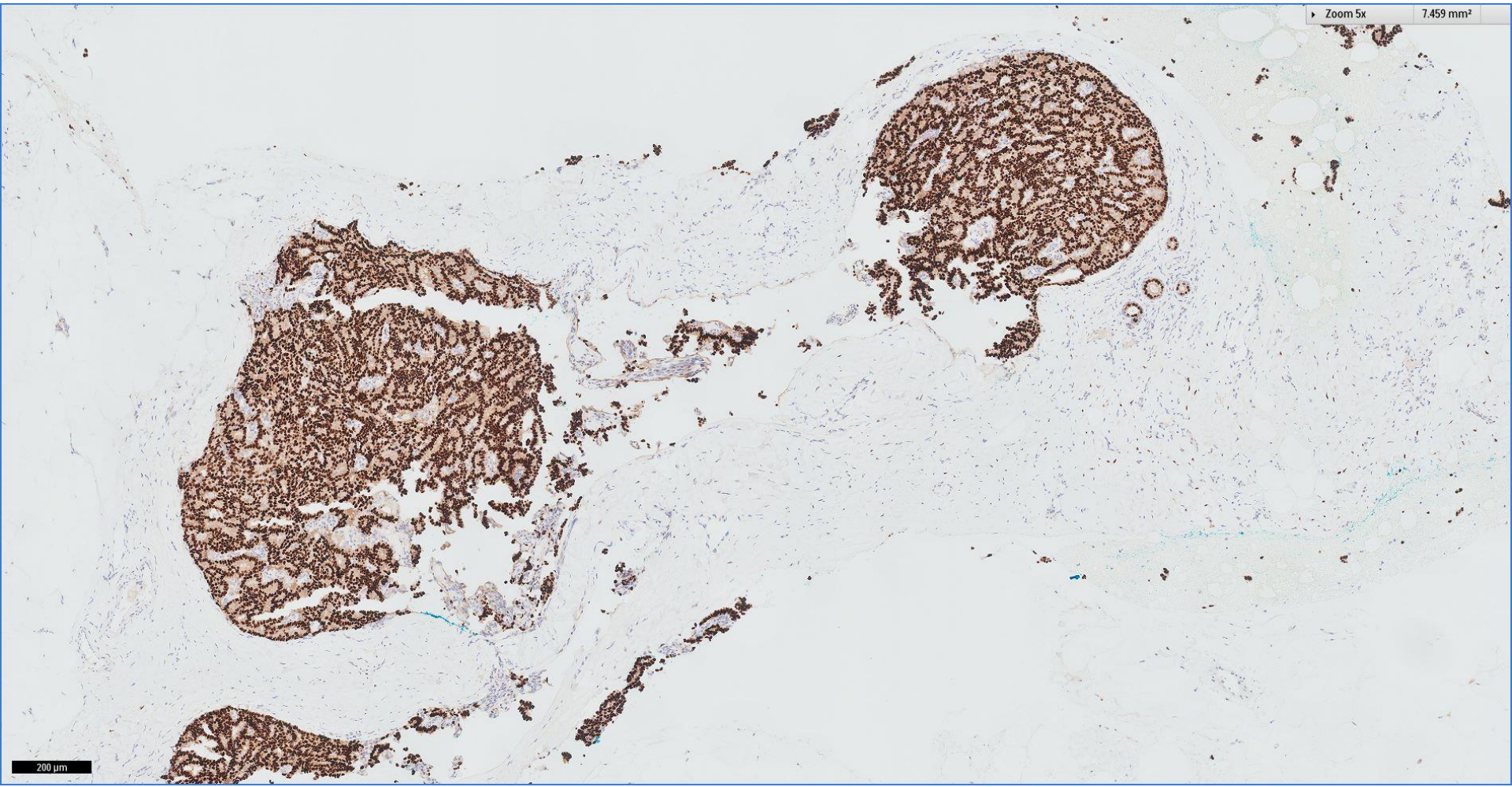
CK14



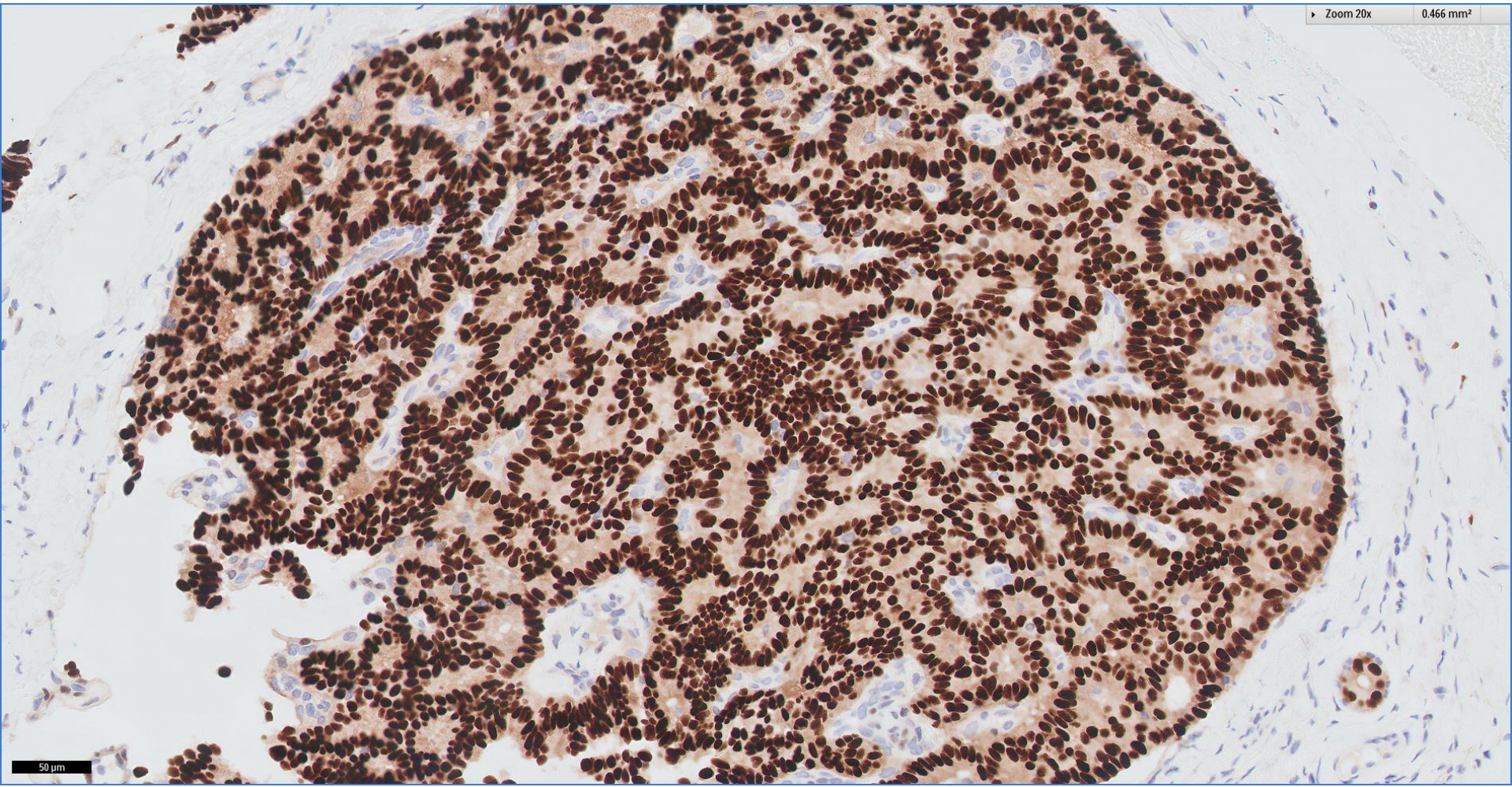
CK14



CK14



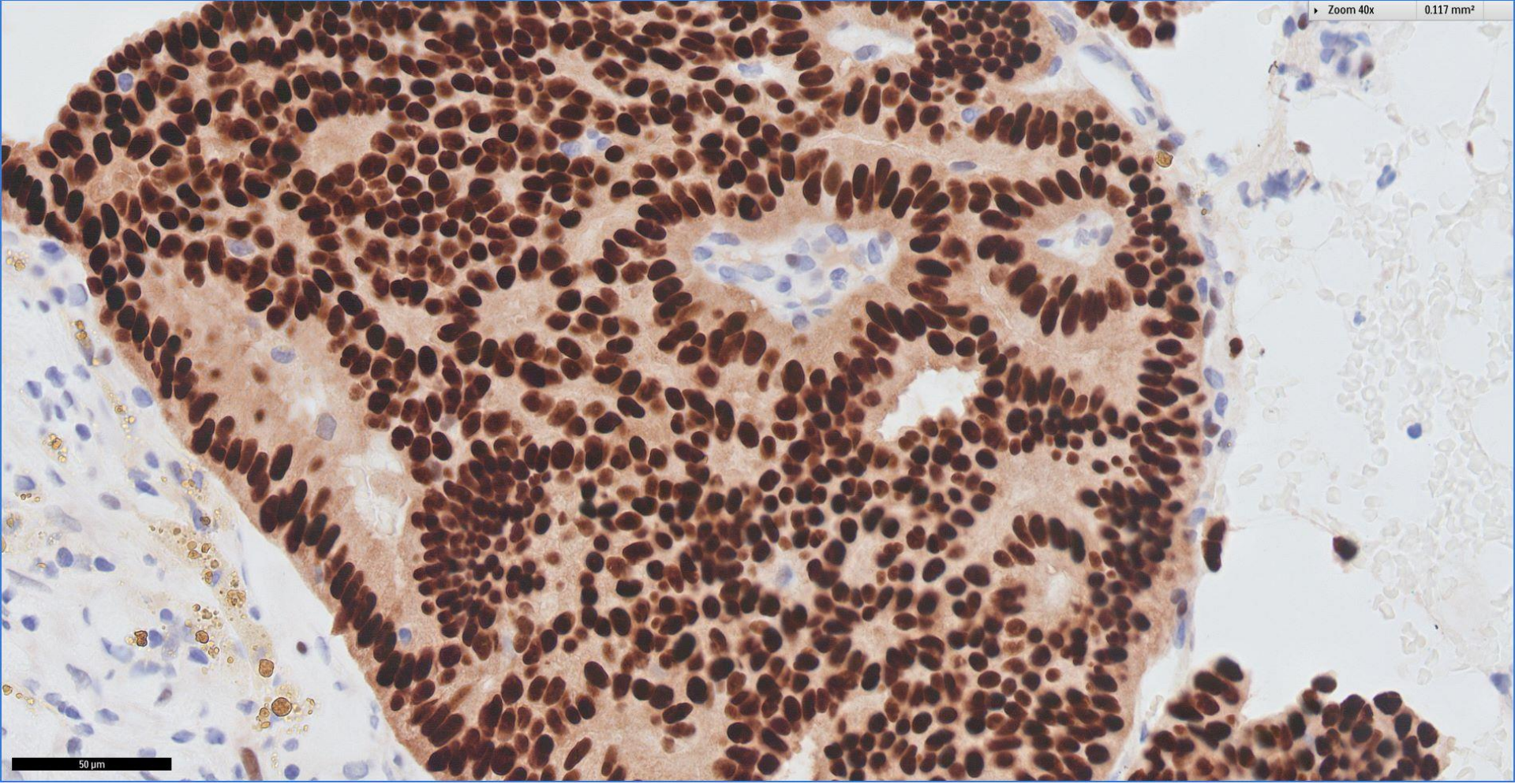
ER



ER

Zoom 40x

0.117 mm²



50 μm

Left breast lump, mammotome biopsy:

Papillary ductal carcinoma in situ



 Breast
Pathology
Course 2014

