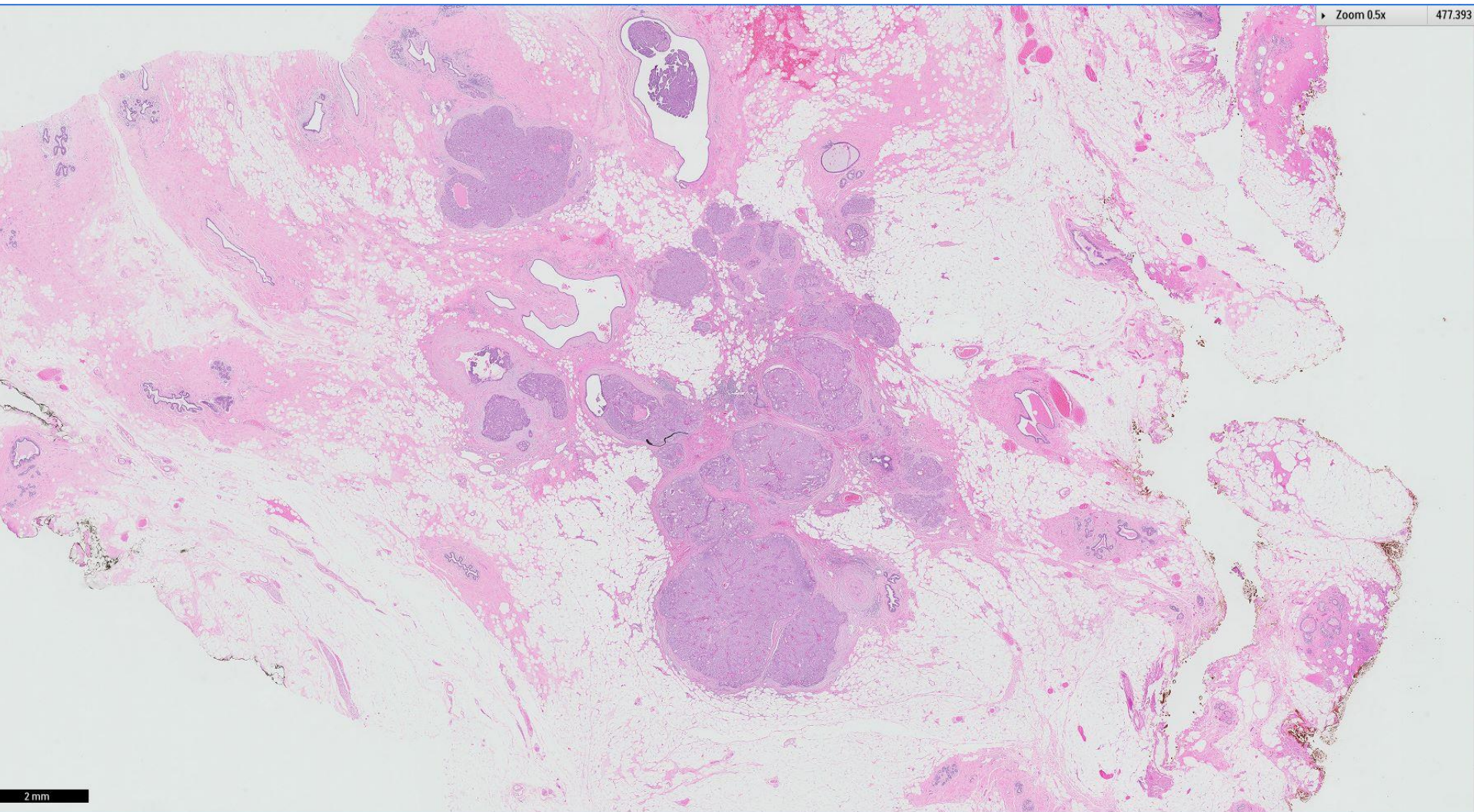


# *Case 37*

46 year old woman with a right  
breast lump.

Wide excision was carried out.

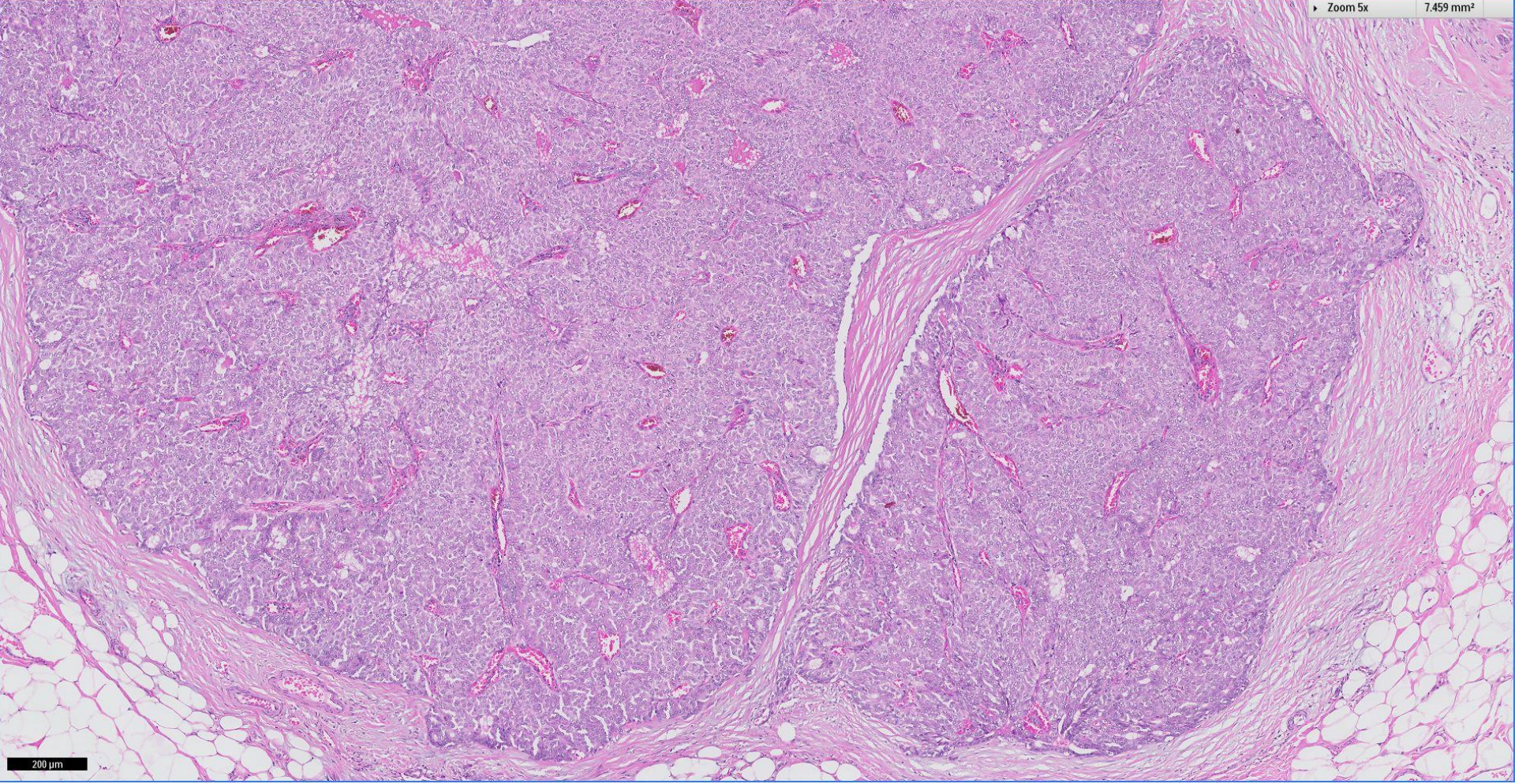






Zoom 5x

7.459 mm<sup>2</sup>

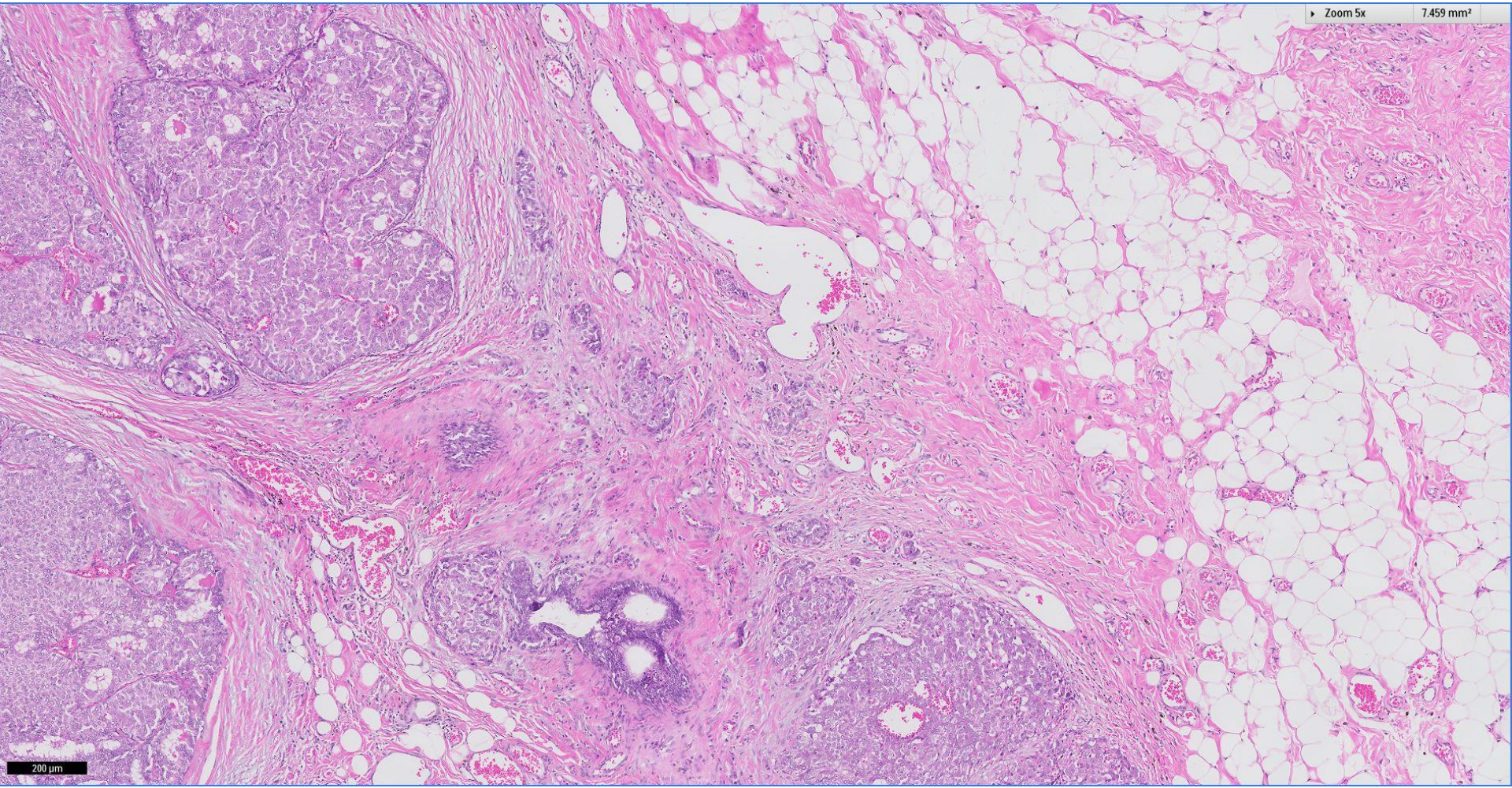


200  $\mu$ m



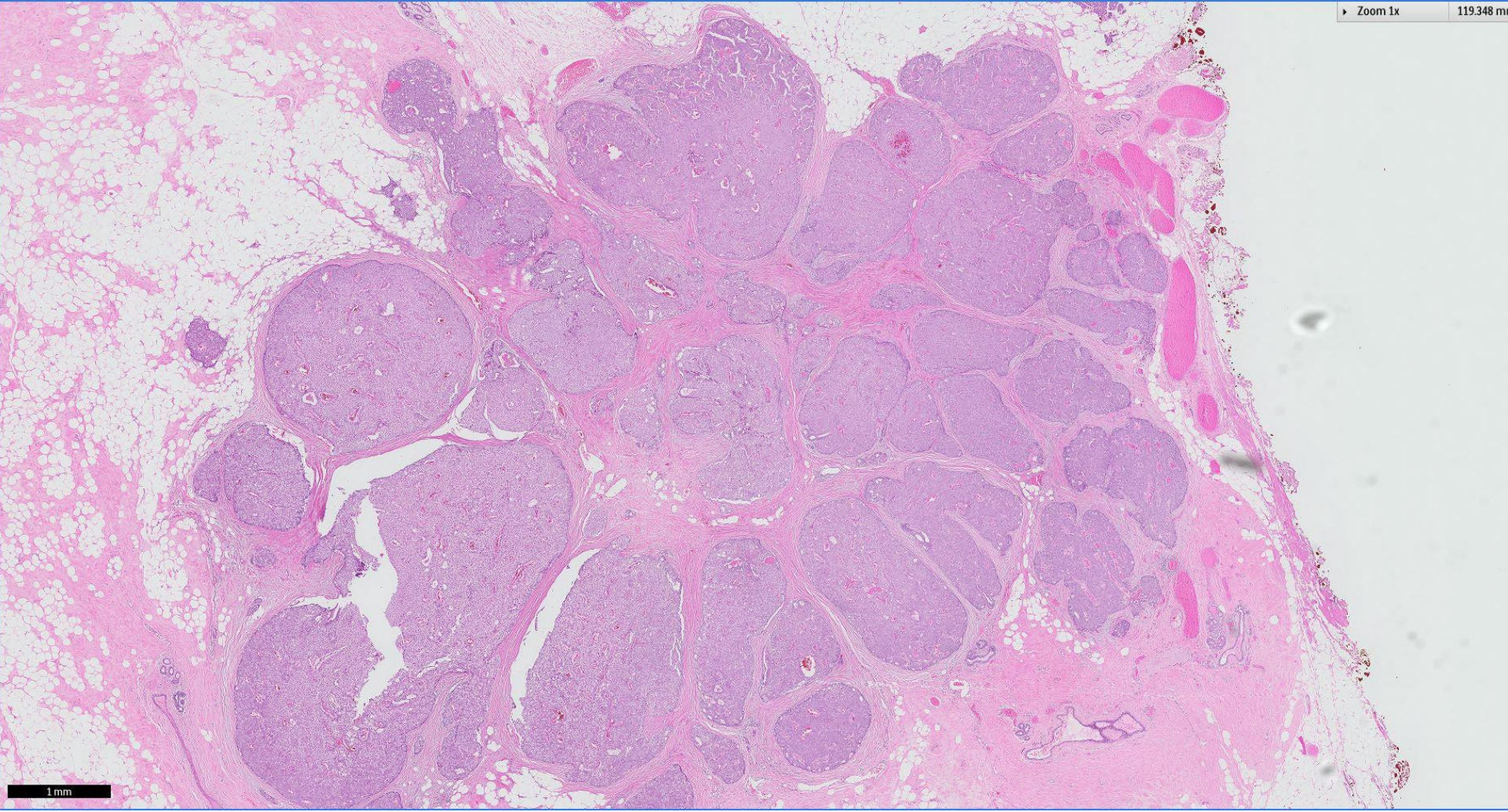
Zoom 5x

7.459 mm<sup>2</sup>



200  $\mu$ m



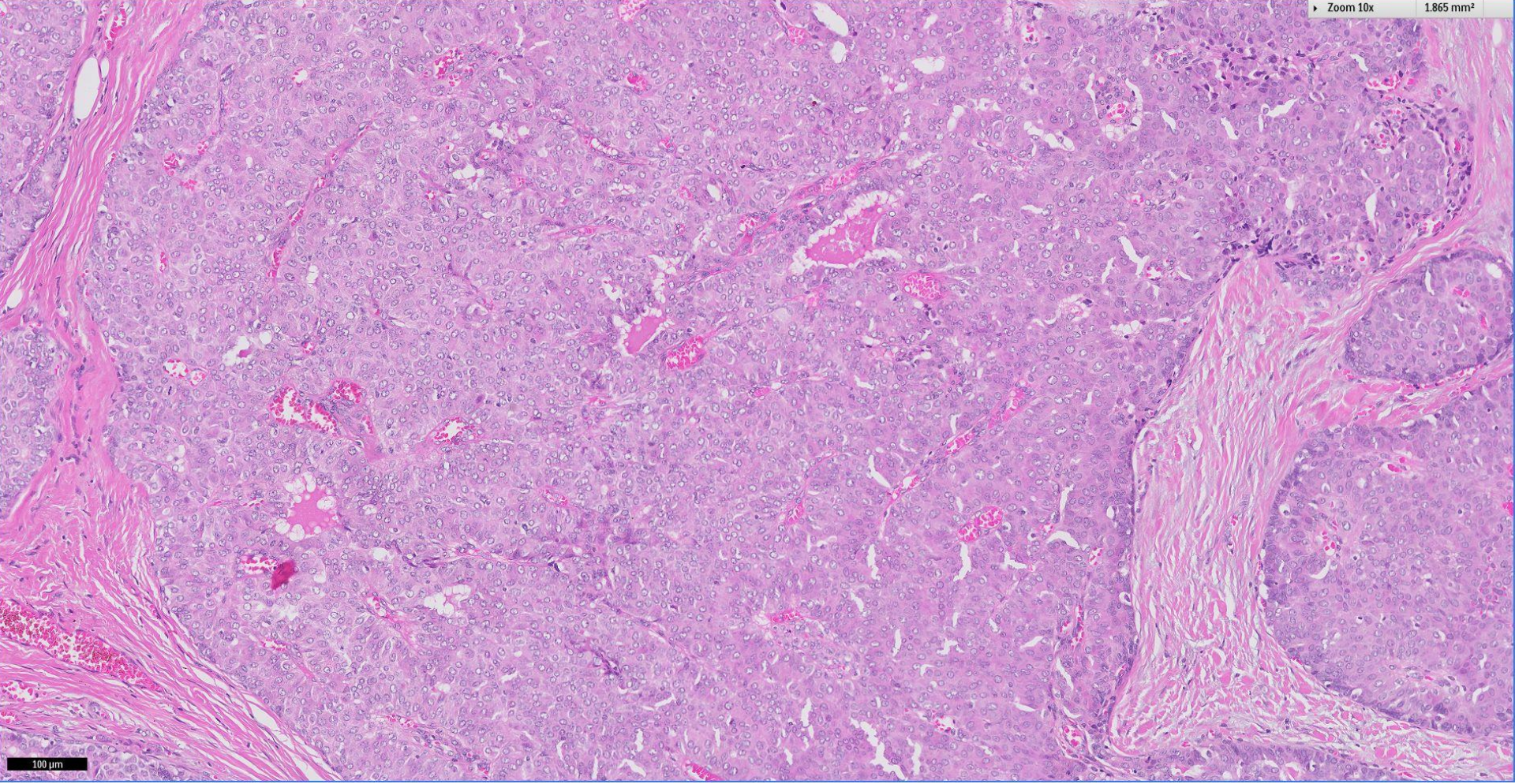


1 mm



Zoom 10x

1.865 mm<sup>2</sup>

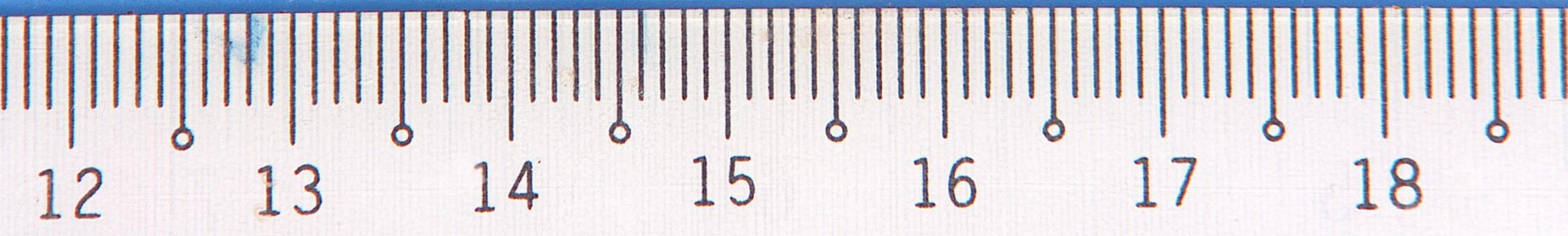
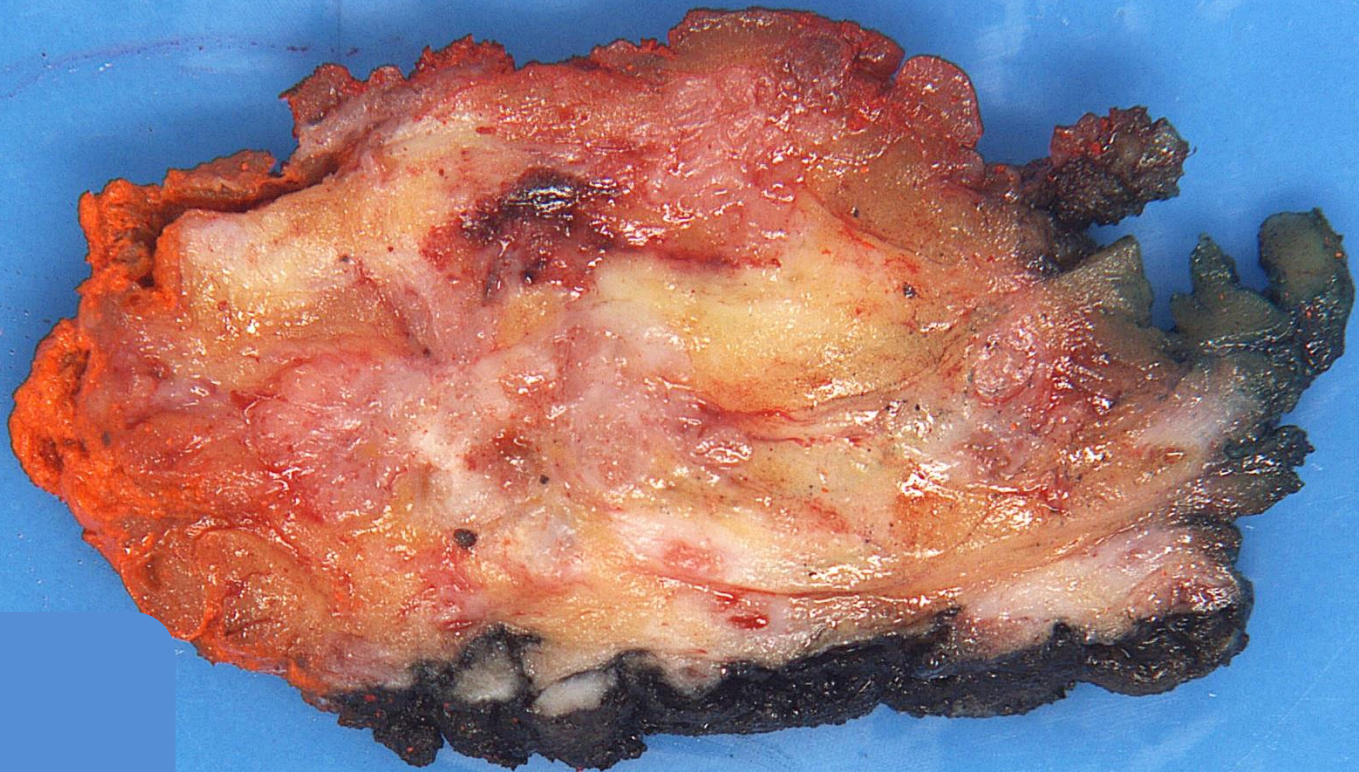


100  $\mu$ m





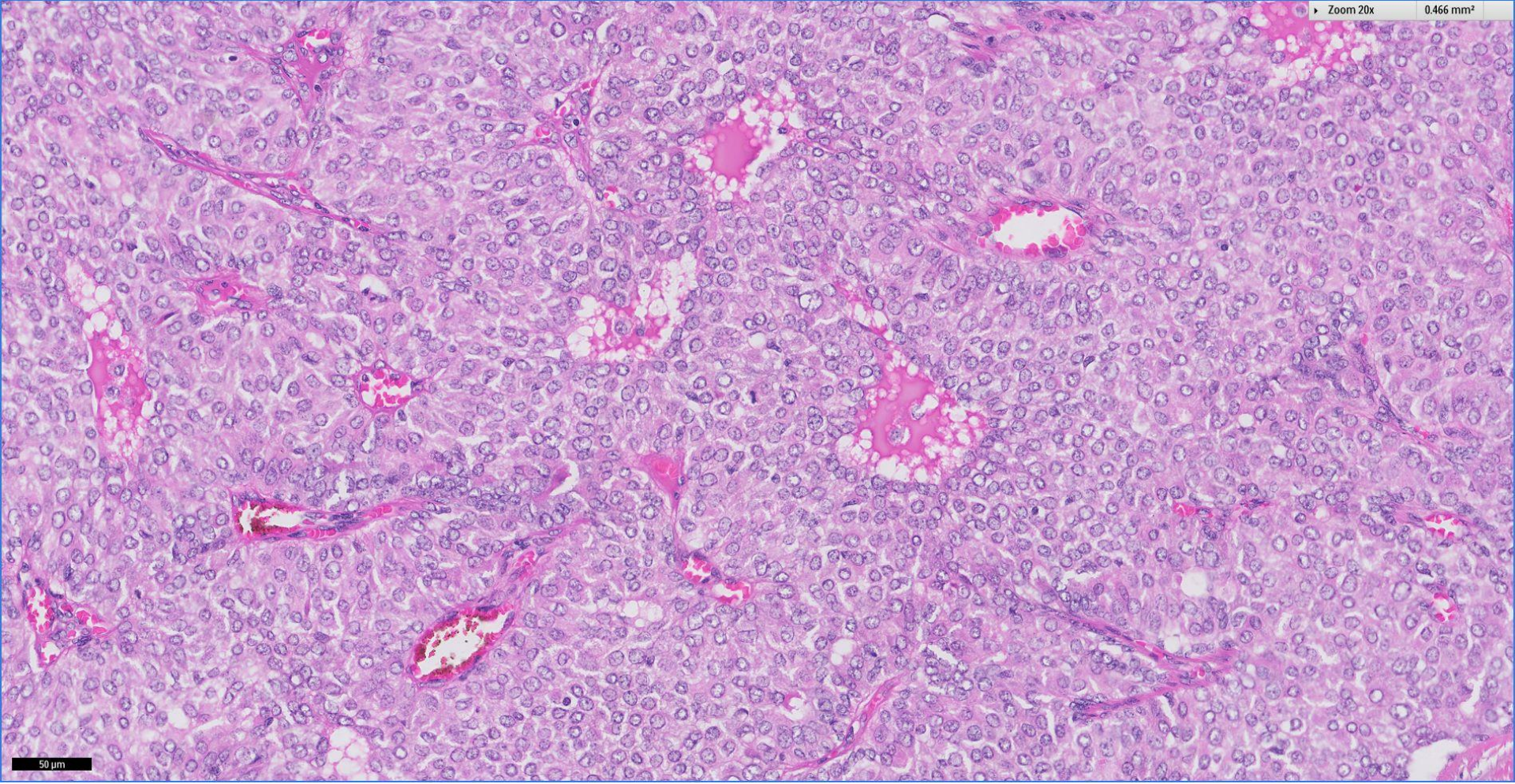






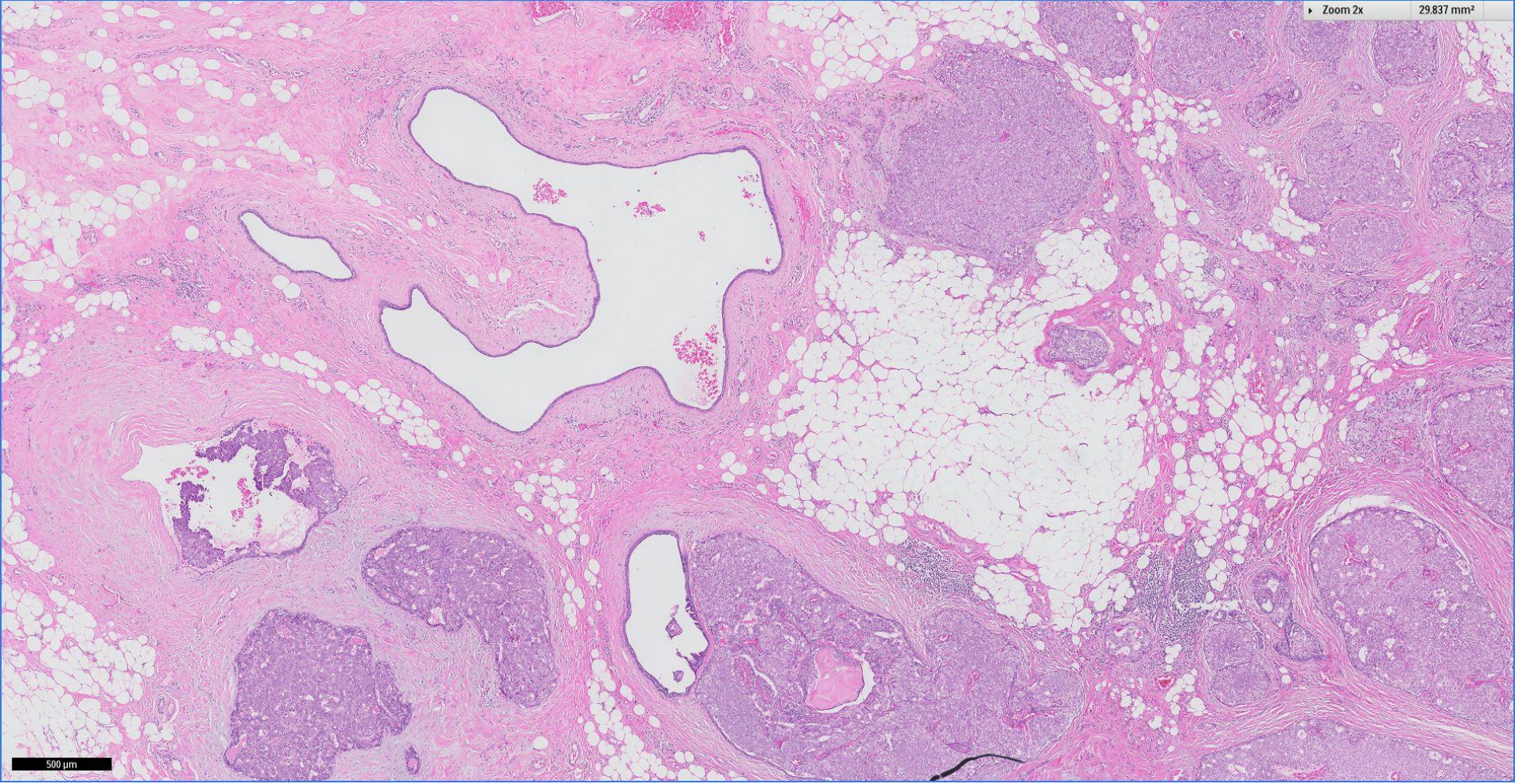
Zoom 20x

0.466 mm<sup>2</sup>

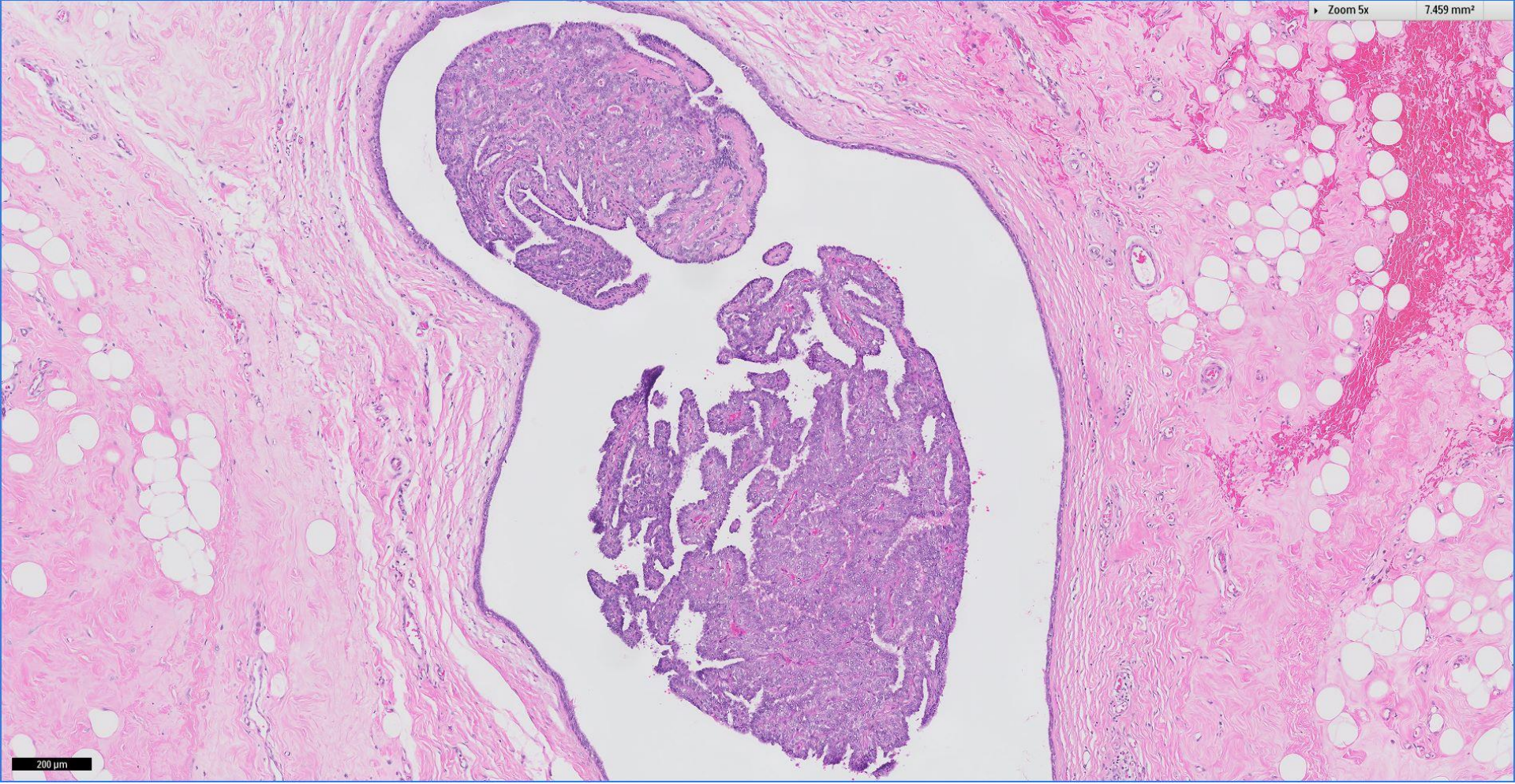


50 μm





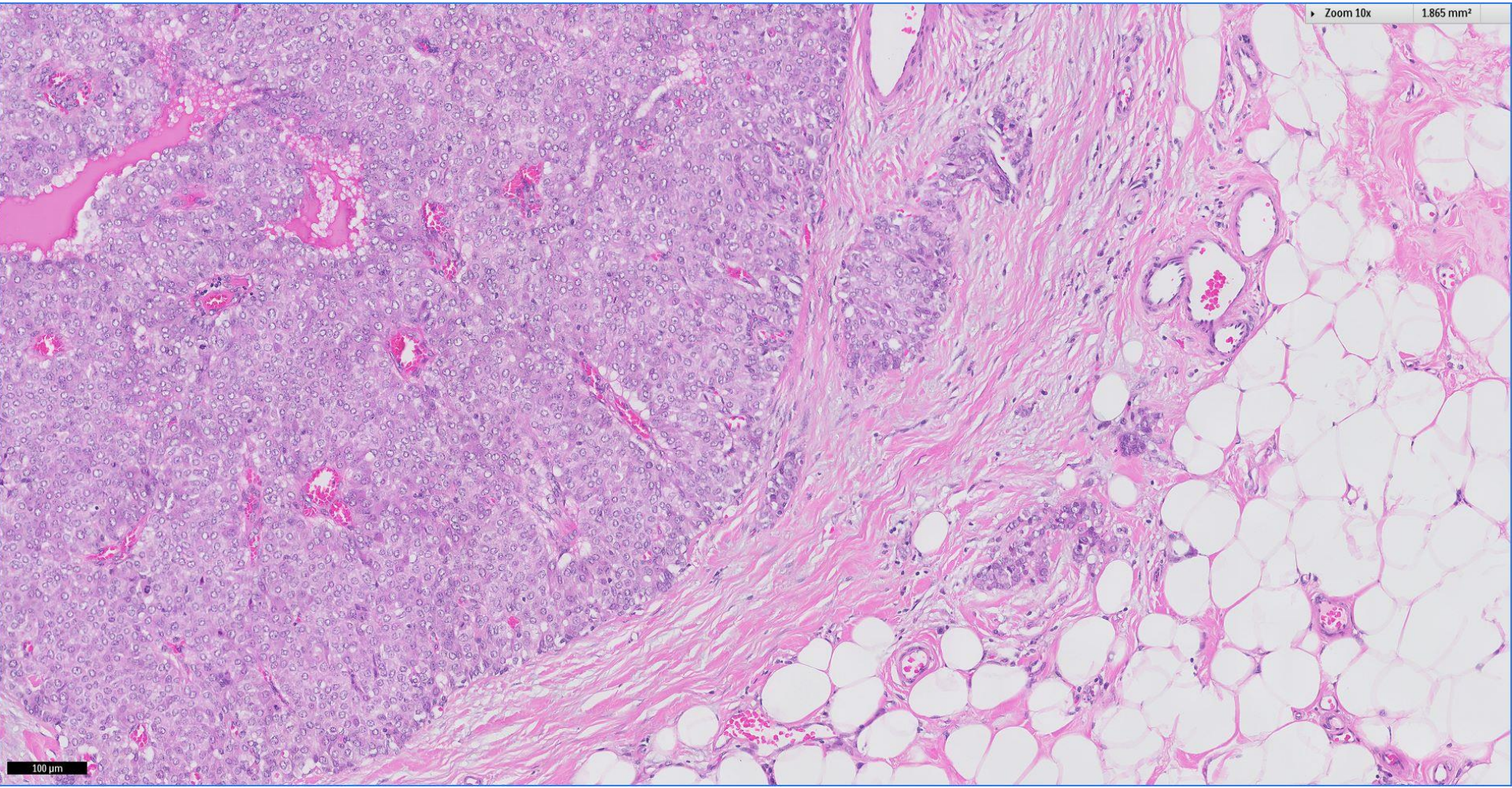






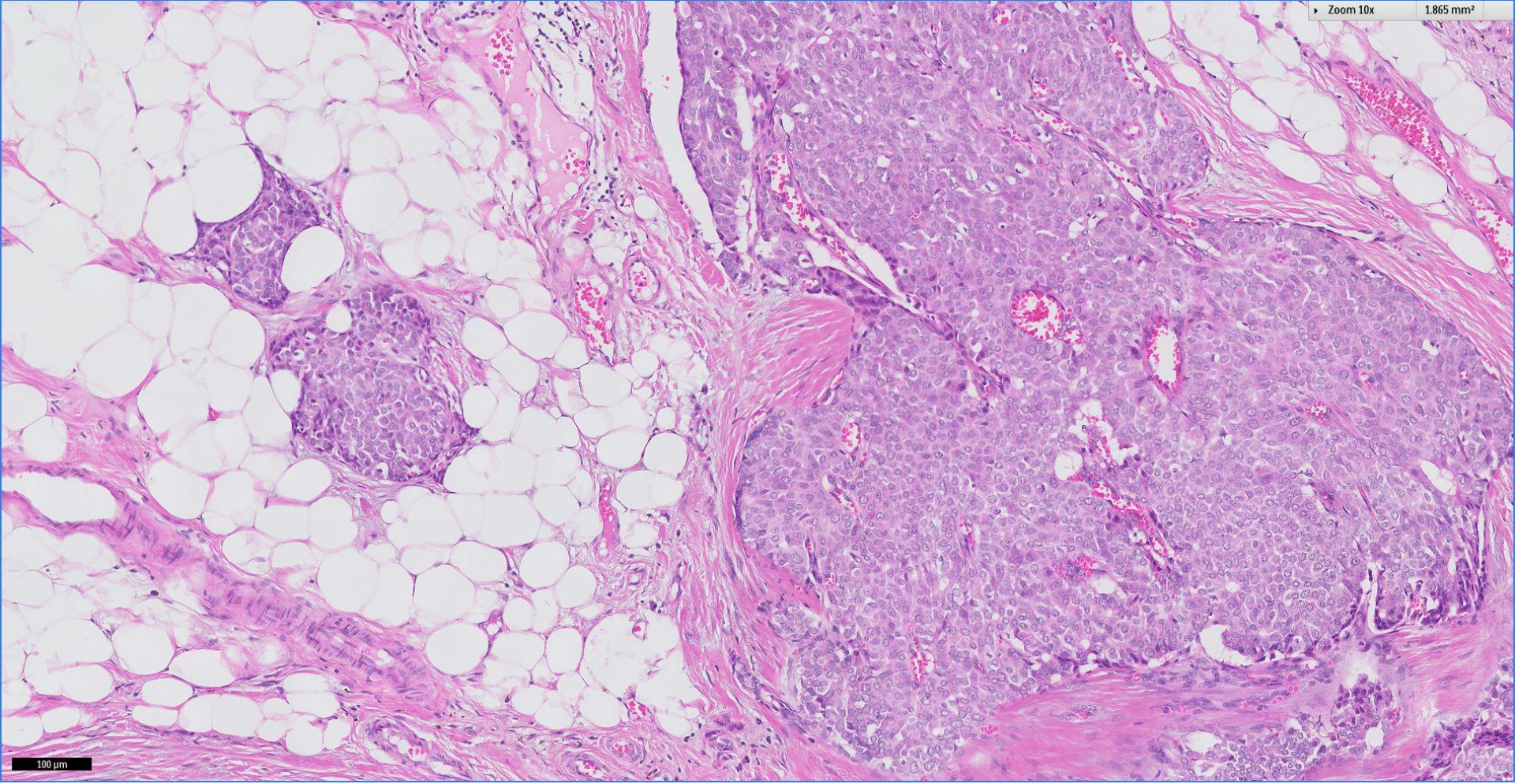
Zoom 10x

1.865 mm<sup>2</sup>



100  $\mu$ m

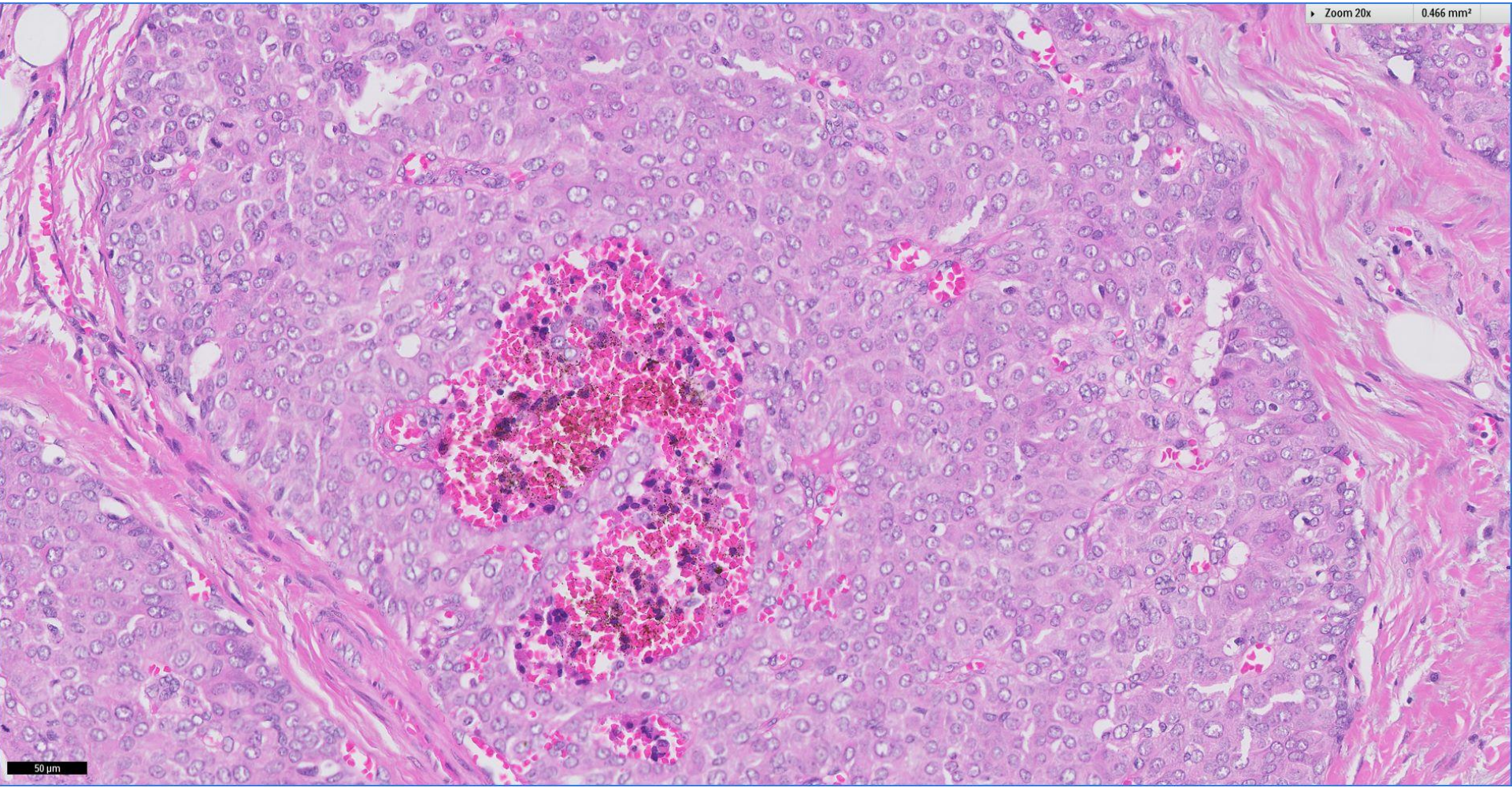






Zoom 20x

0.466 mm<sup>2</sup>

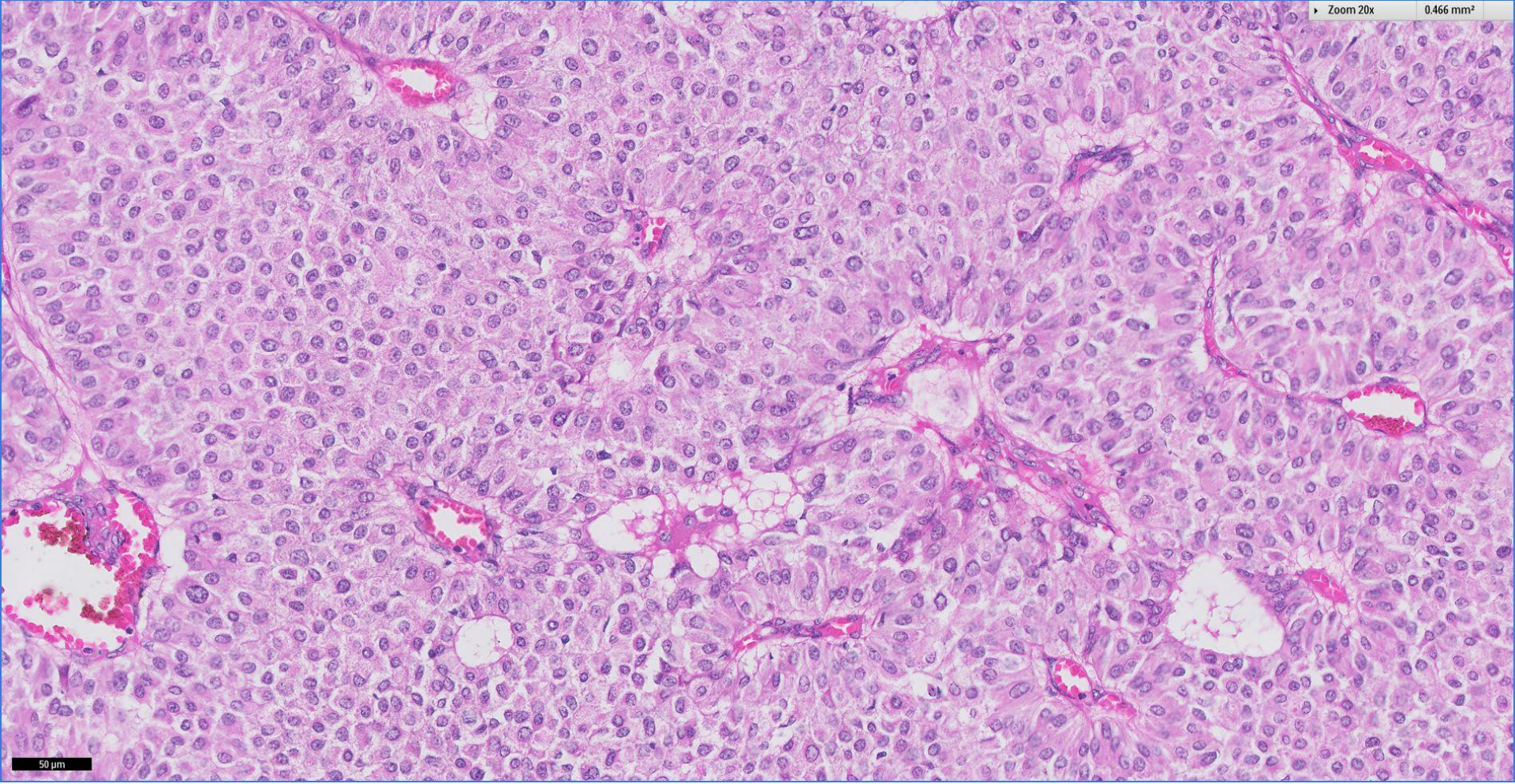


50 μm



Zoom 20x

0.466 mm<sup>2</sup>

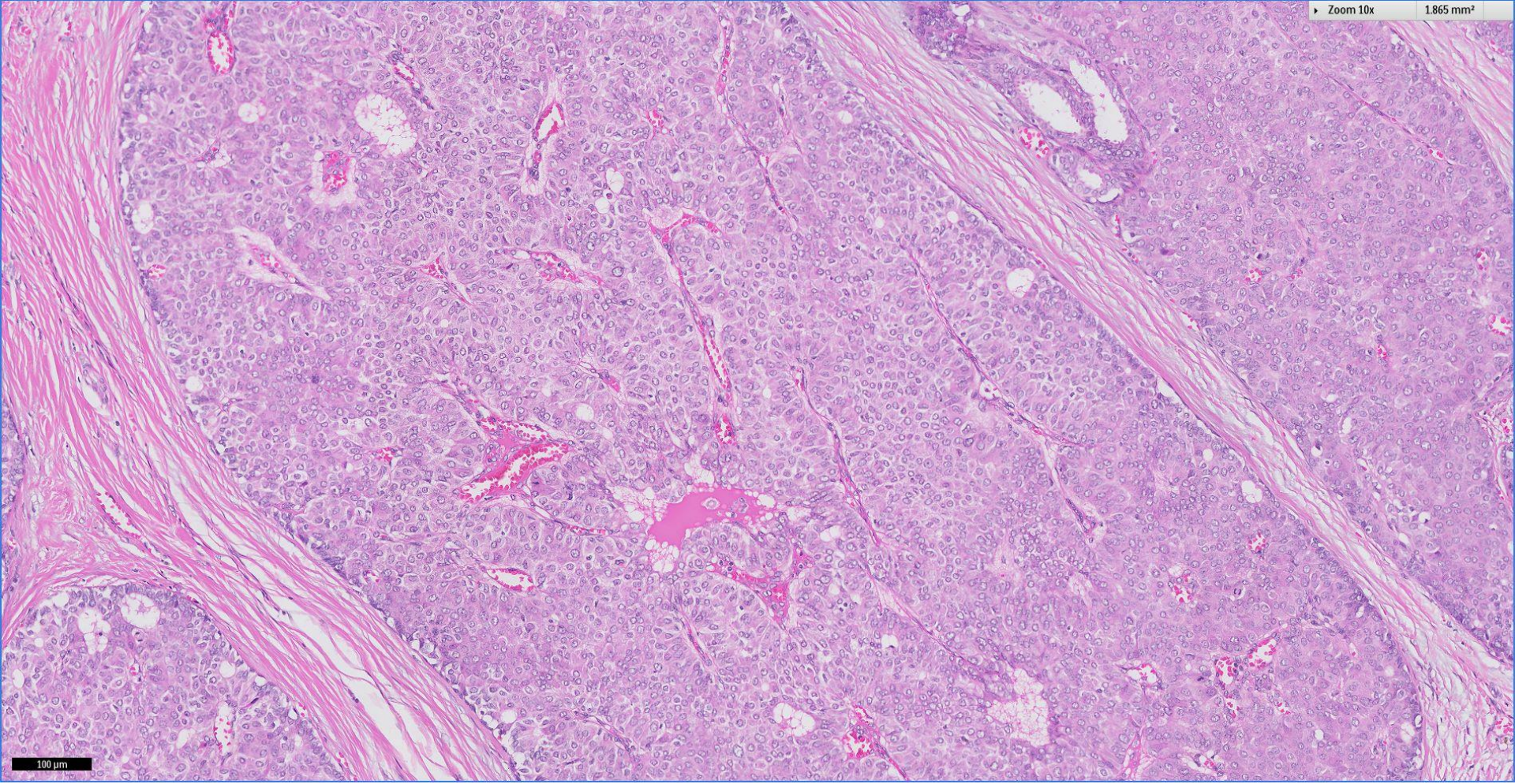


50 μm



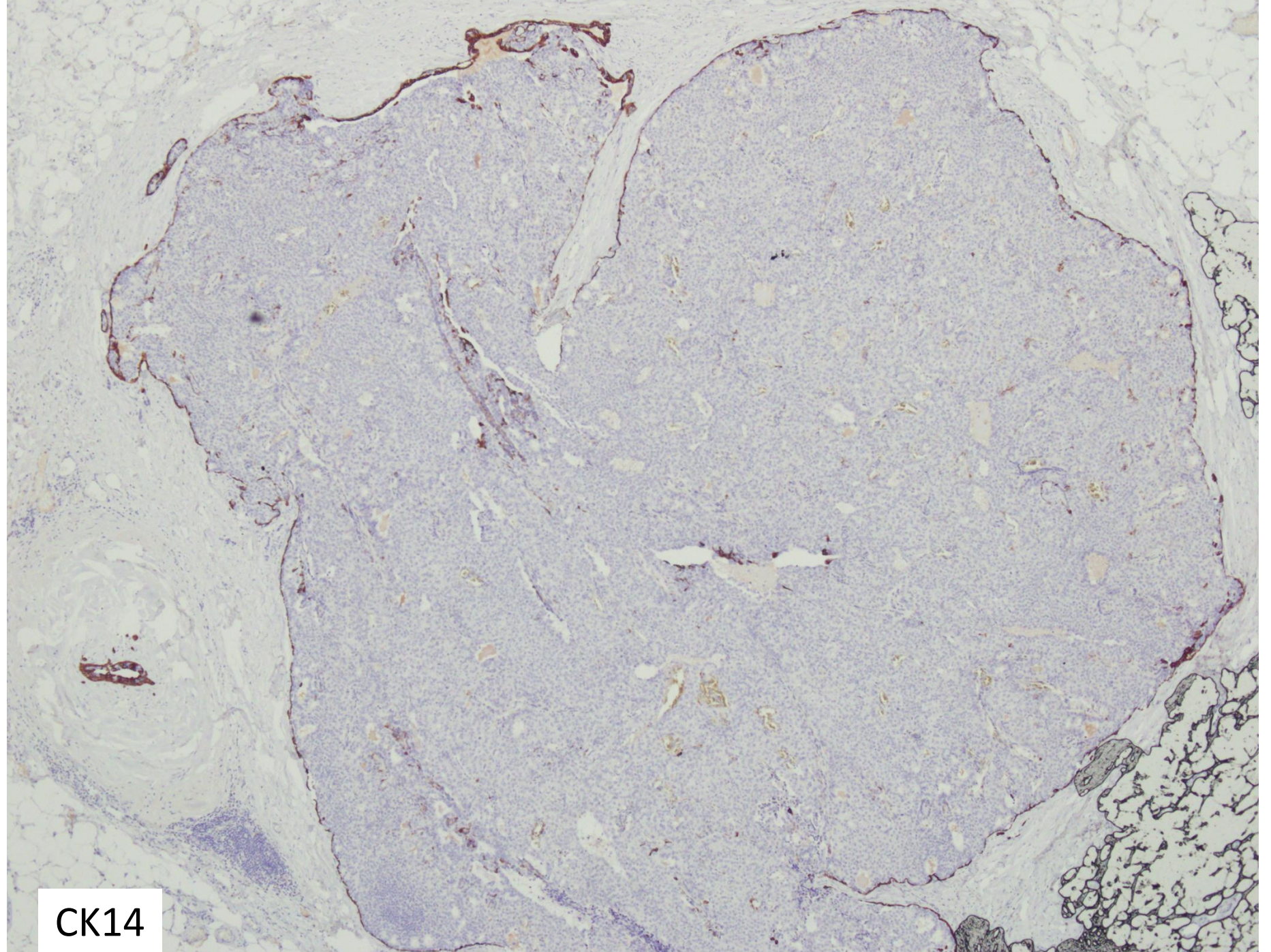
Zoom 10x

1.865 mm<sup>2</sup>



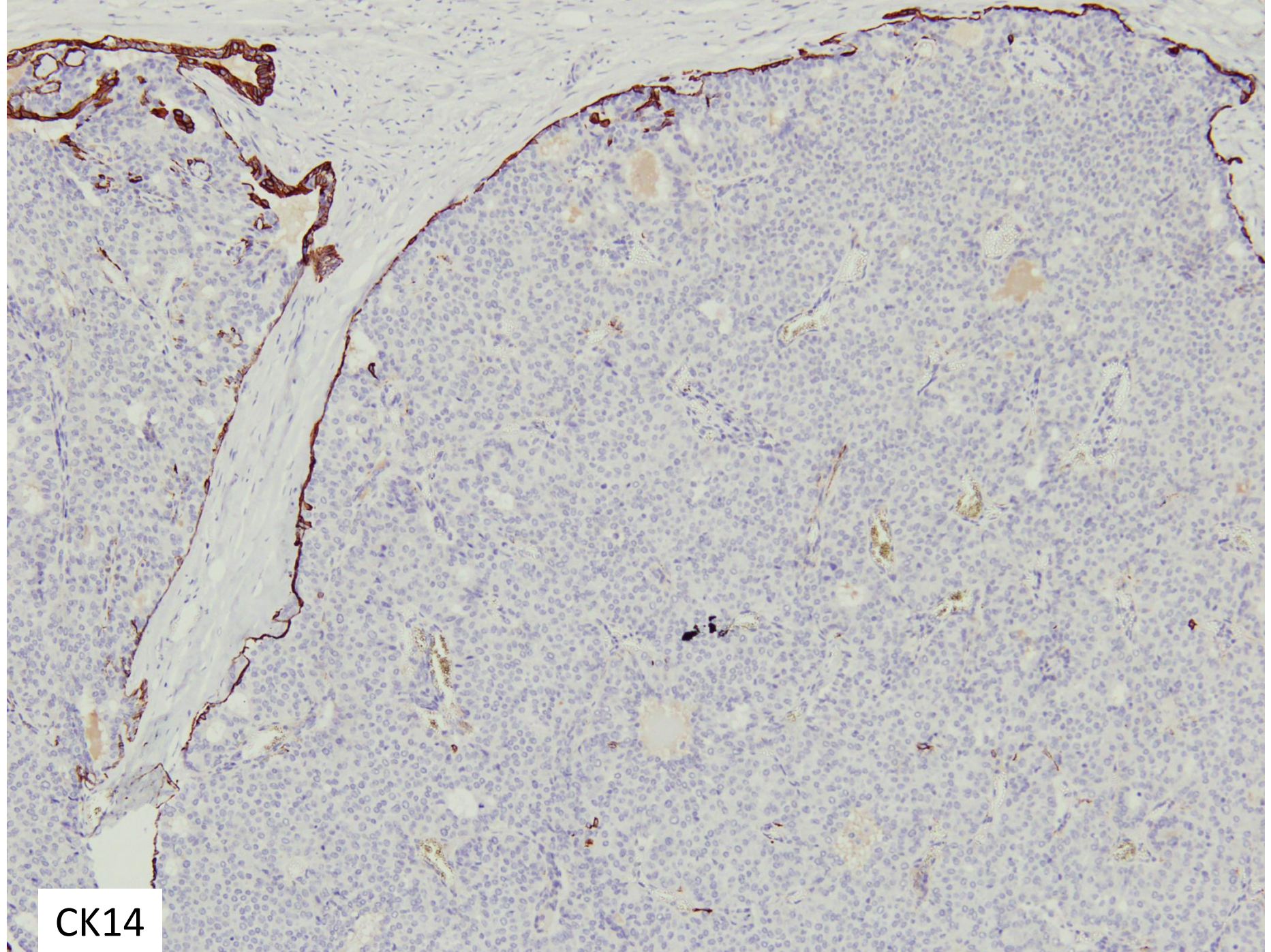
100  $\mu$ m





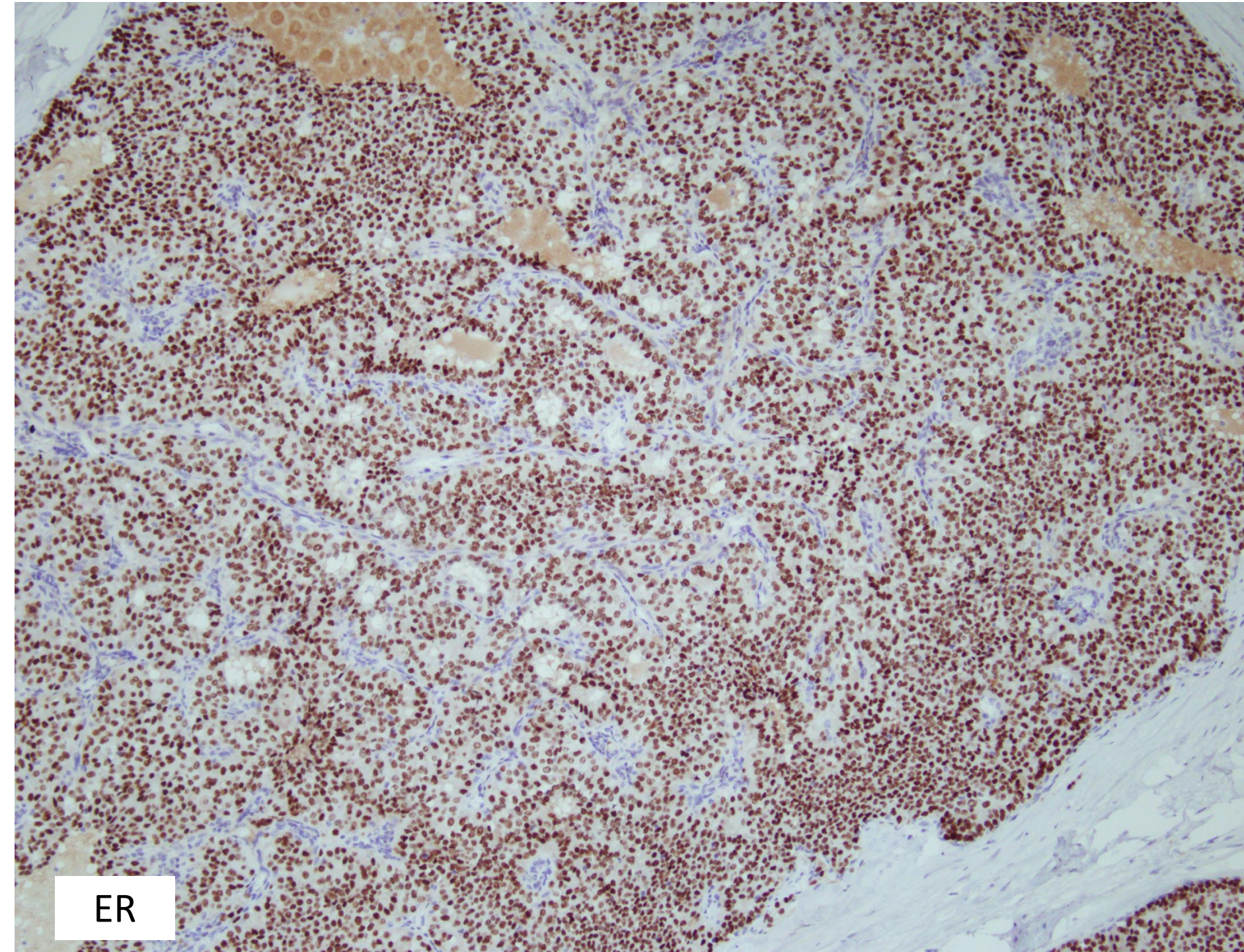
CK14





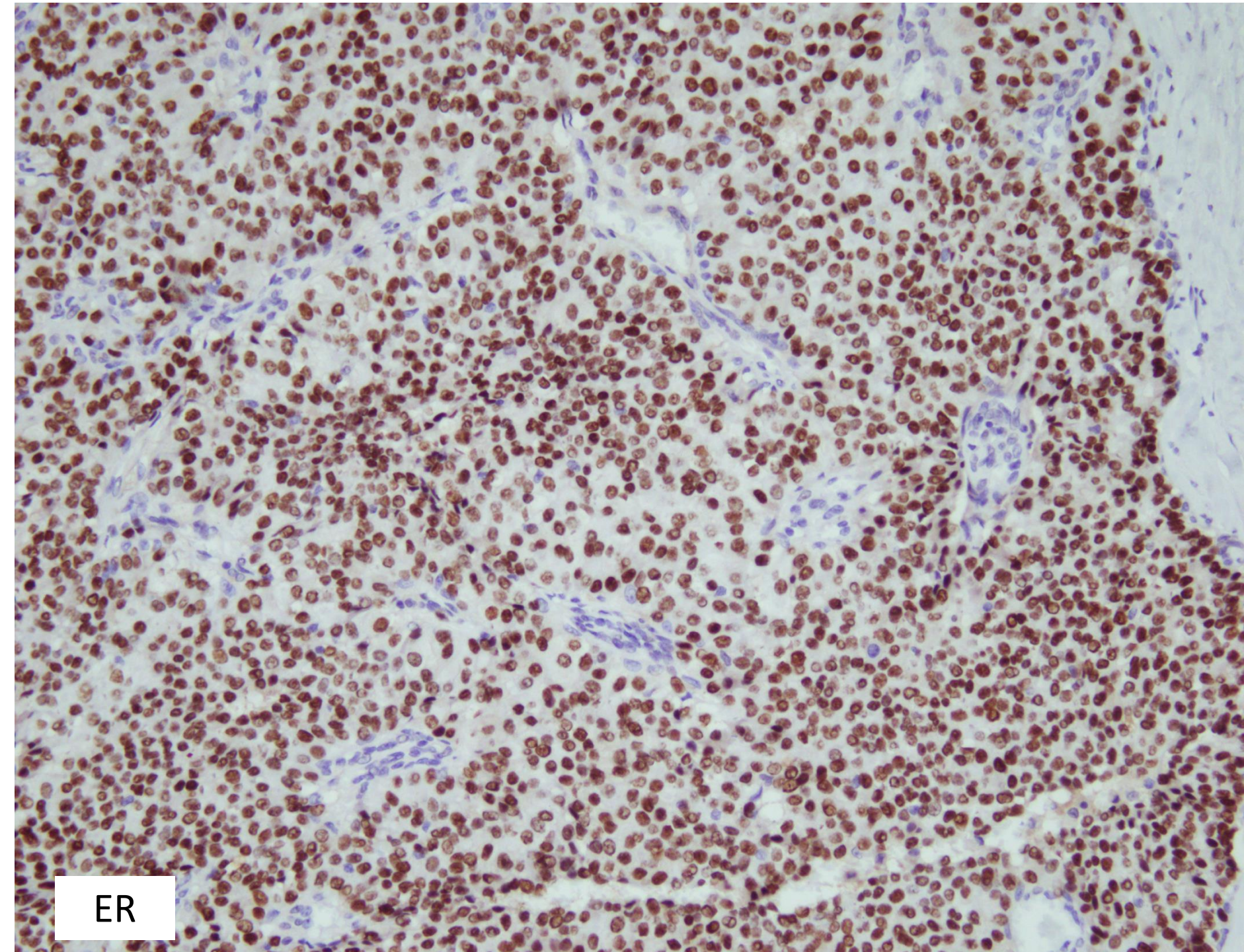
CK14





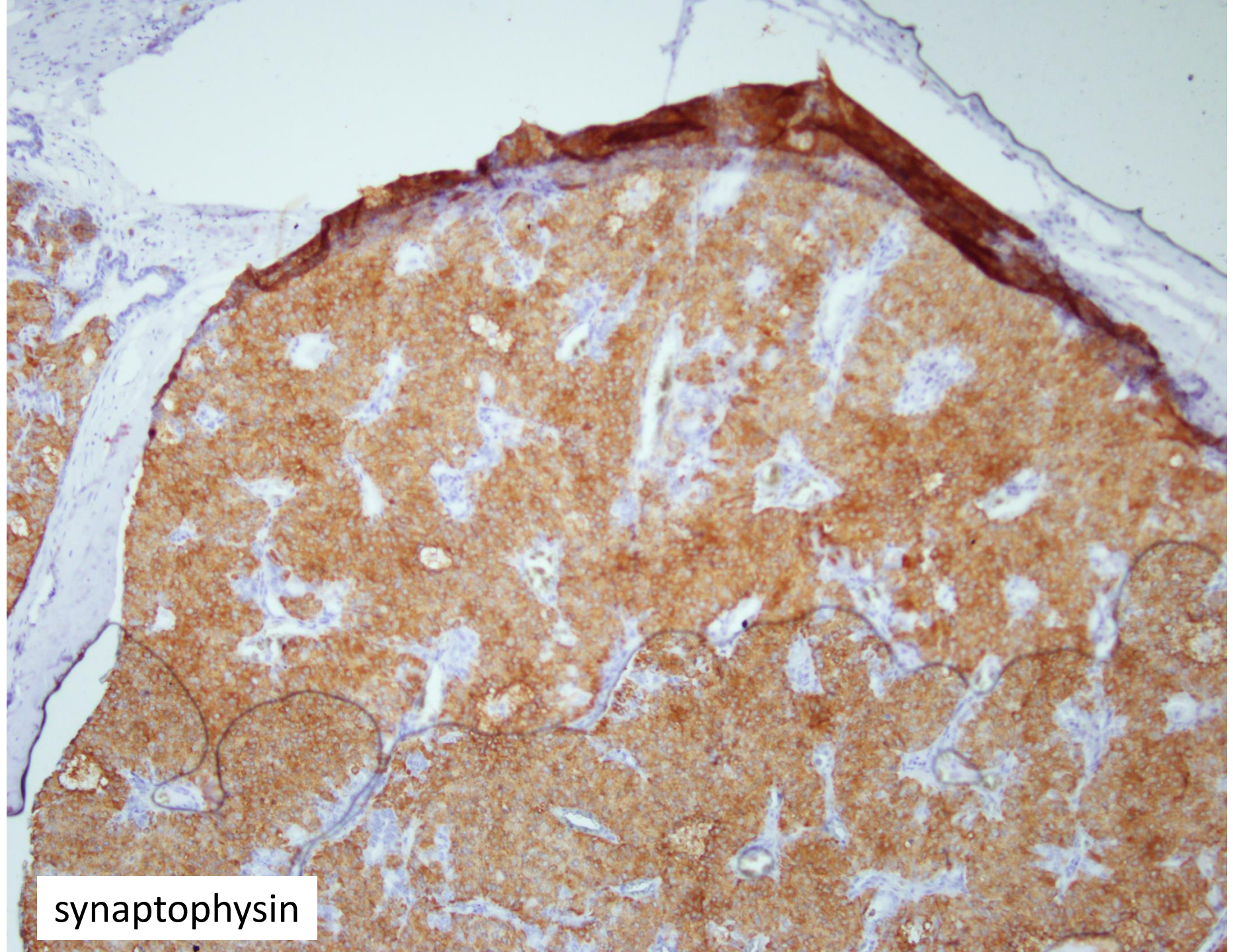
ER





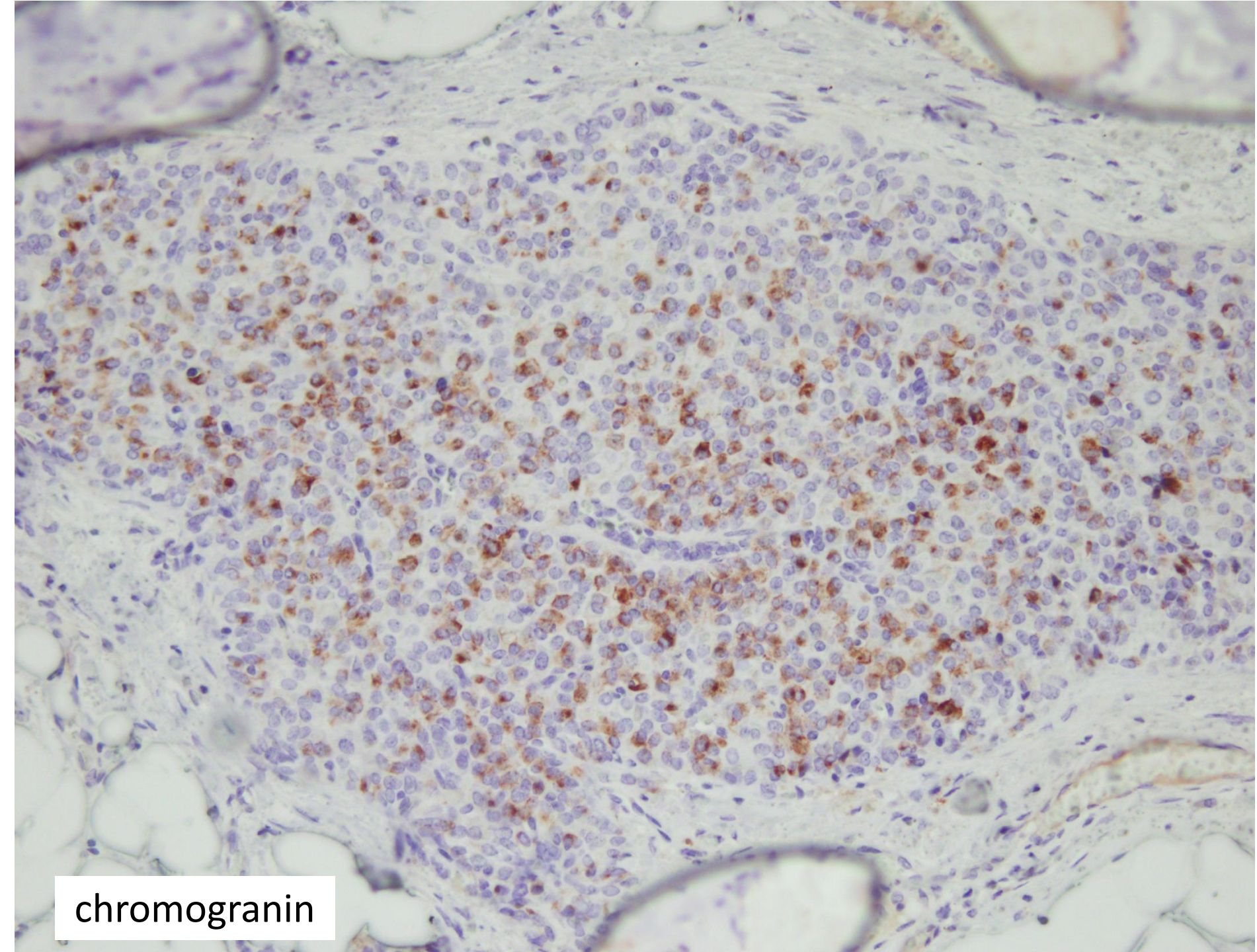
ER





synaptophysin





chromogranin



Right breast, wide excision:

*Solid papillary carcinoma (in situ)  
with focal microinvasion*





 Breast  
Pathology  
Course 2014

