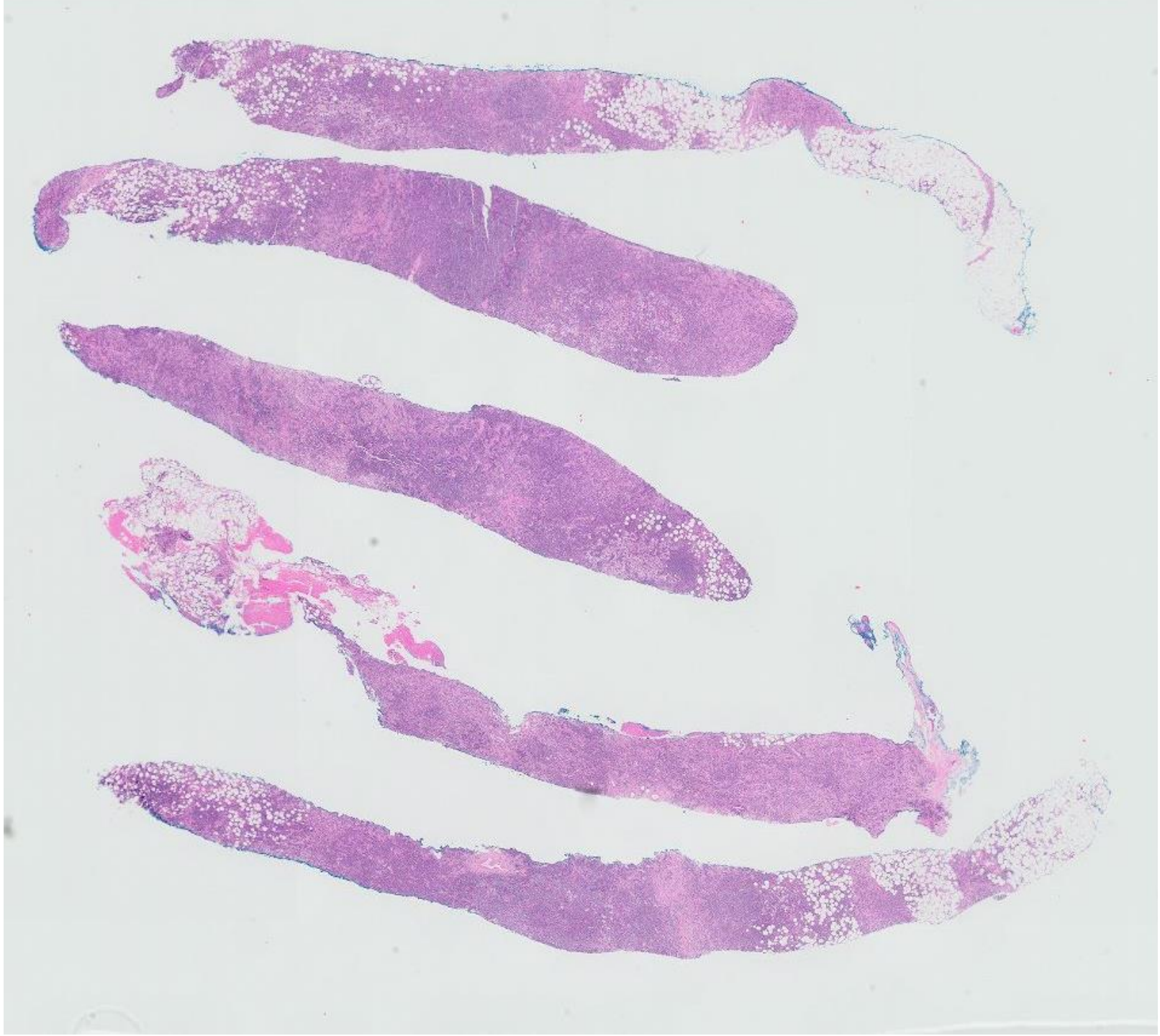
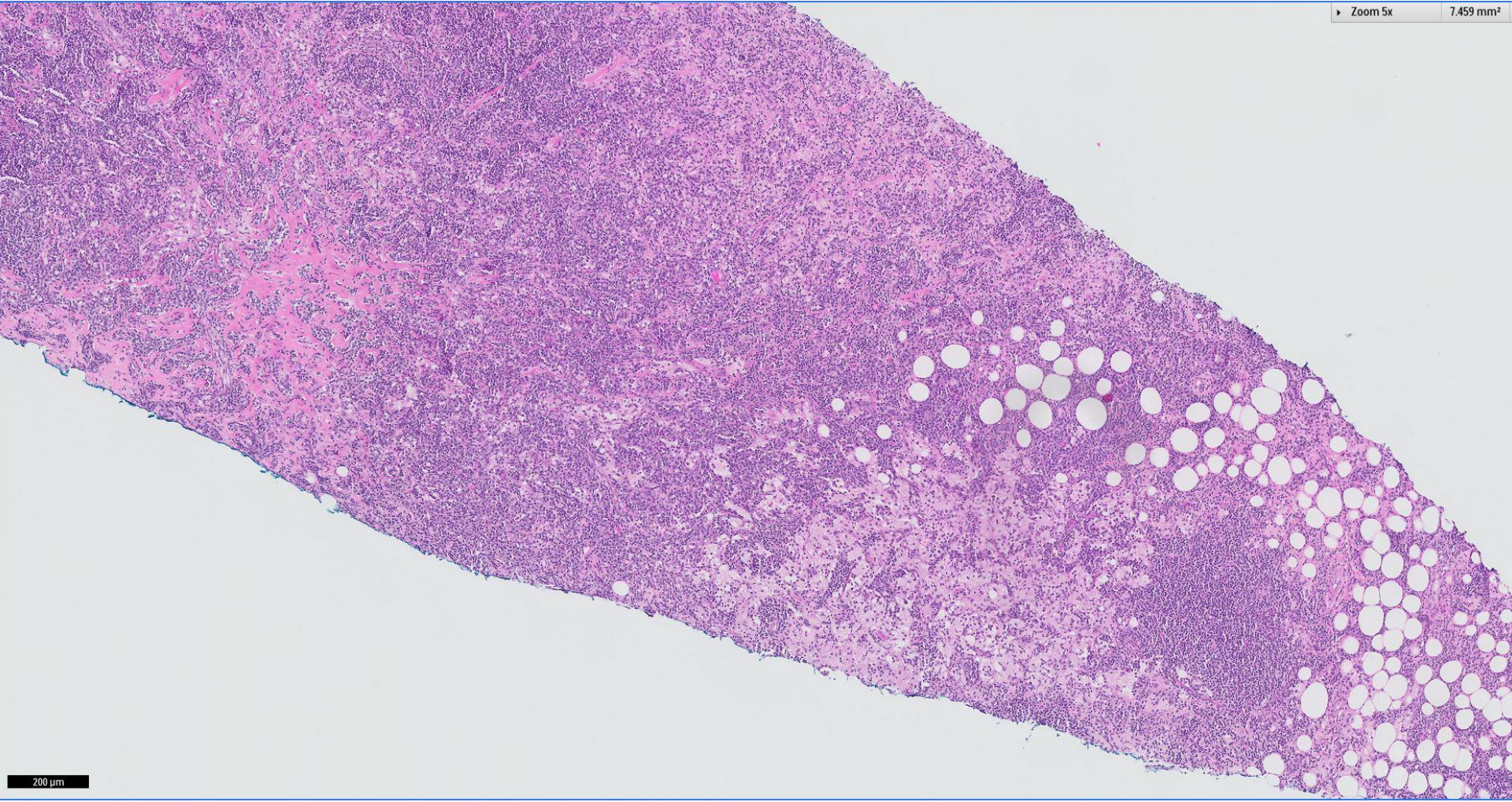


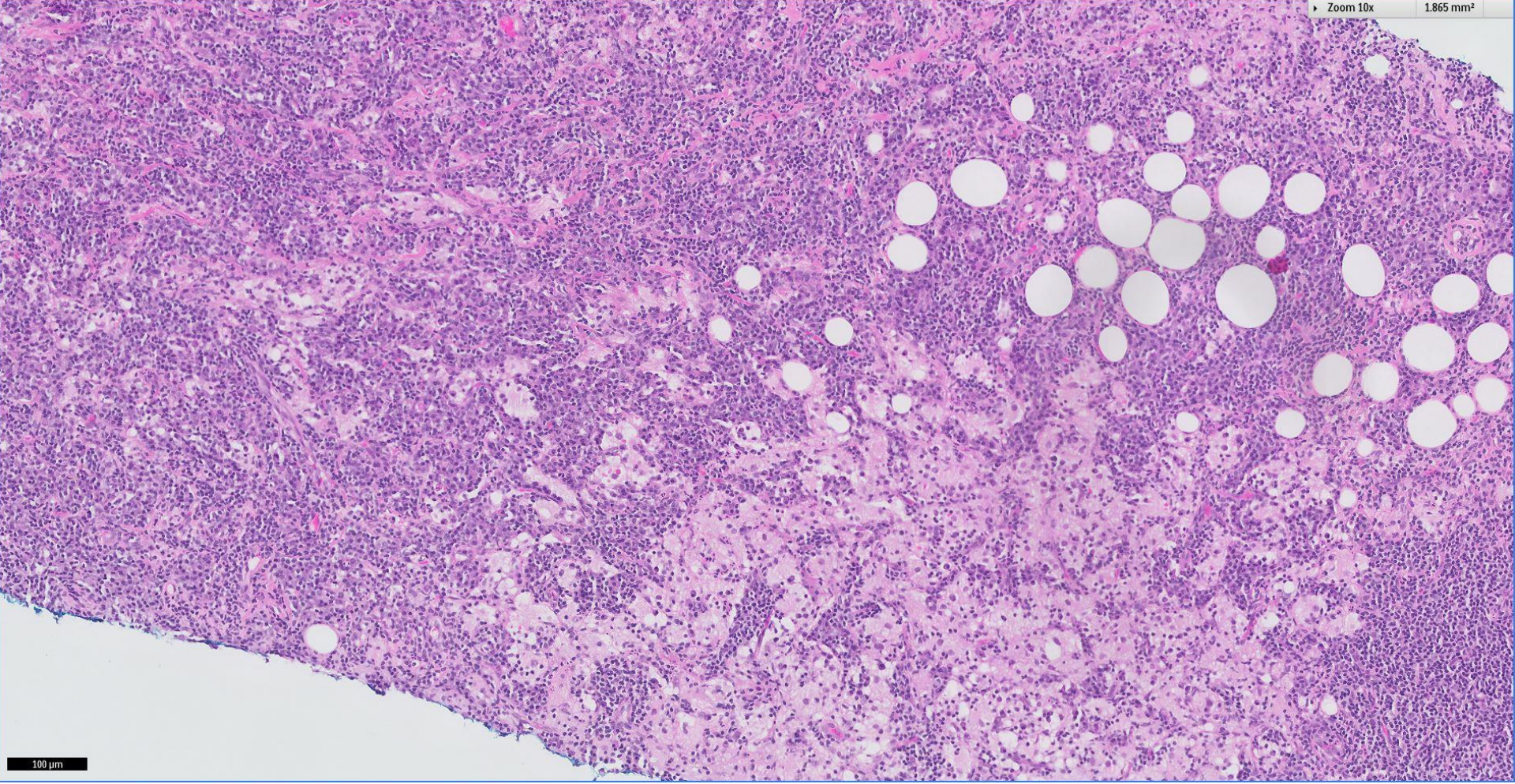
# *Case 30*

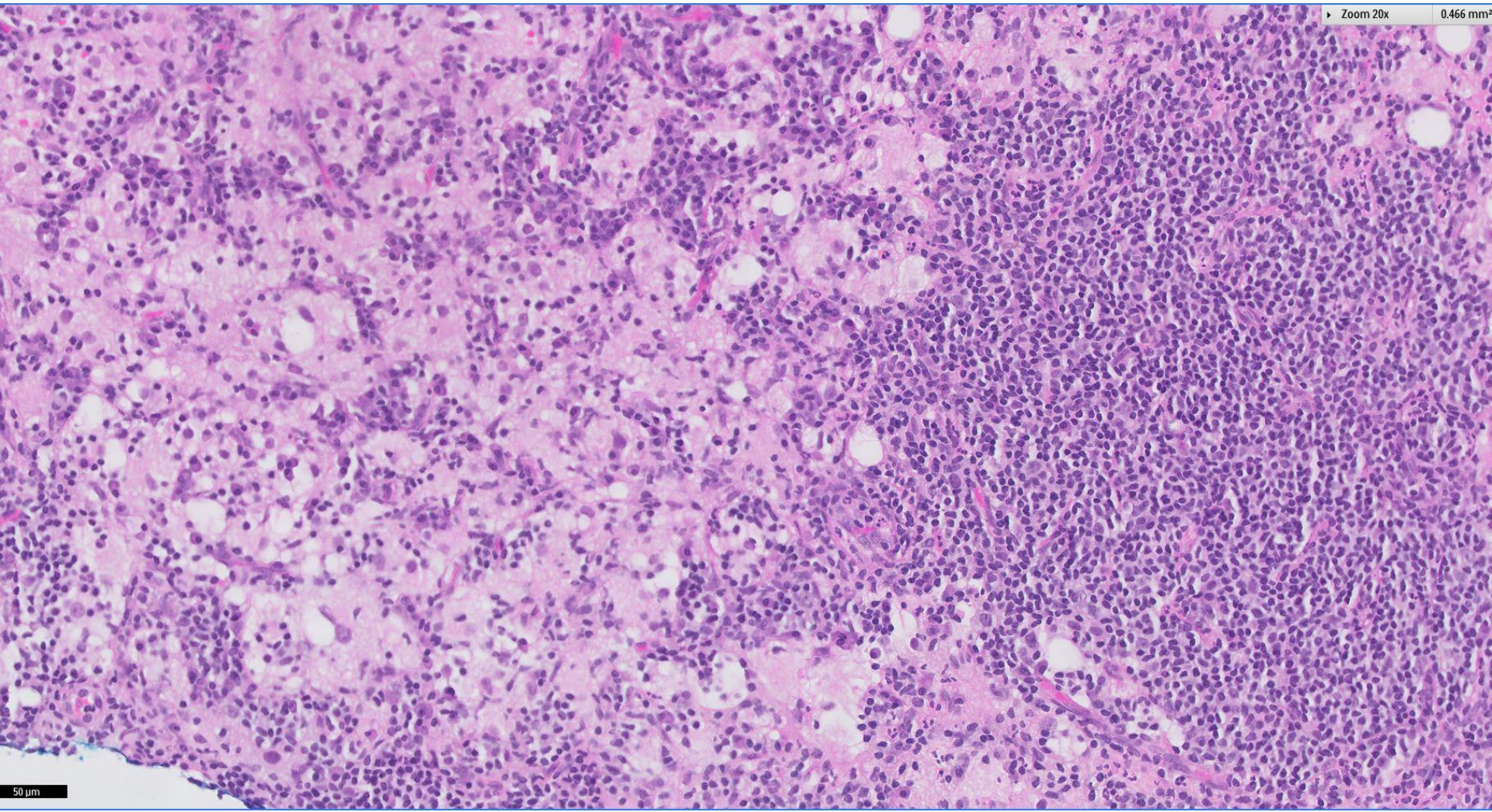
37 year old woman with history of diabetes mellitus, underwent core biopsy of a left breast nodule.





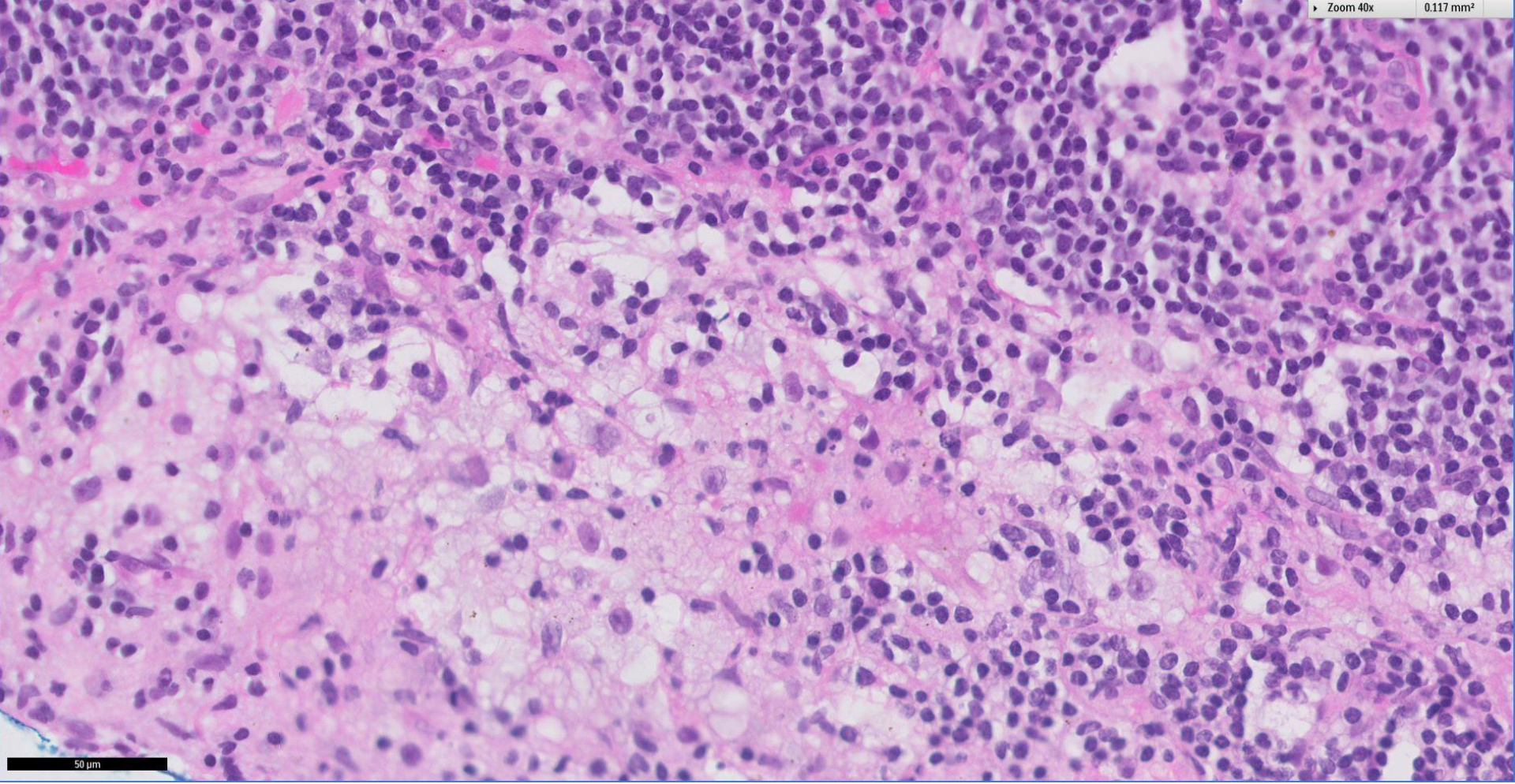






Zoom 40x

0.117 mm<sup>2</sup>

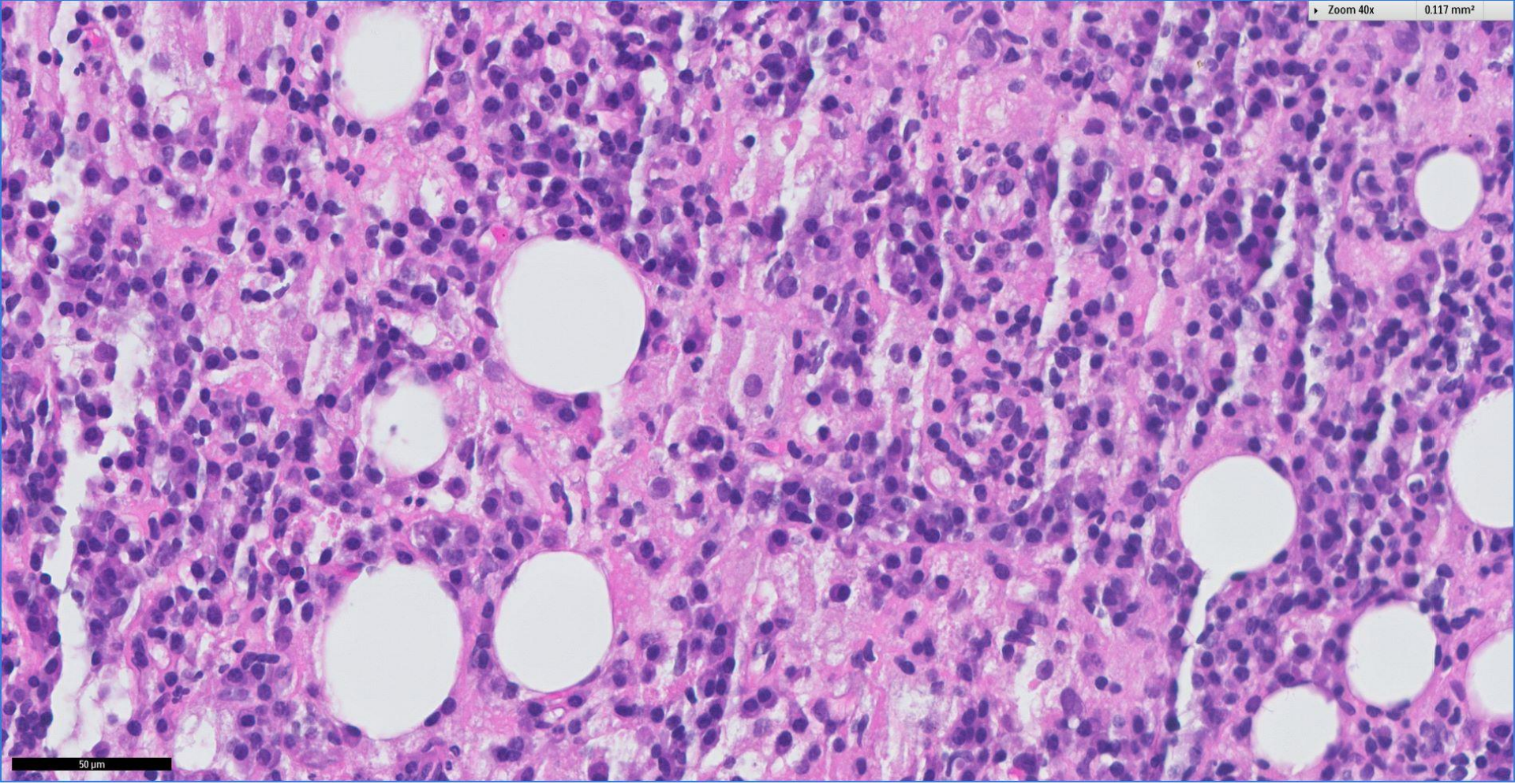


50  $\mu$ m



Zoom 40x

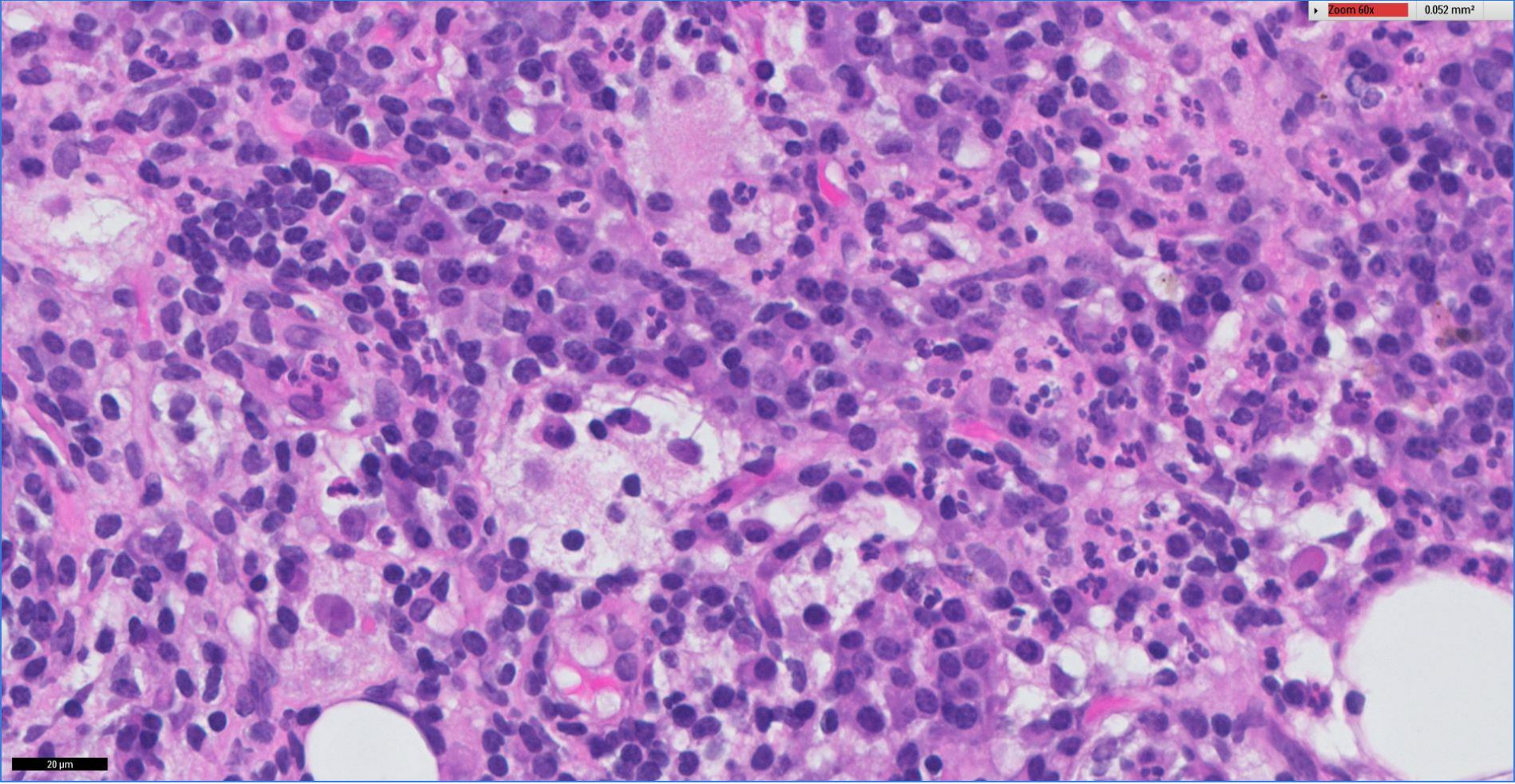
0.117 mm<sup>2</sup>



50 μm



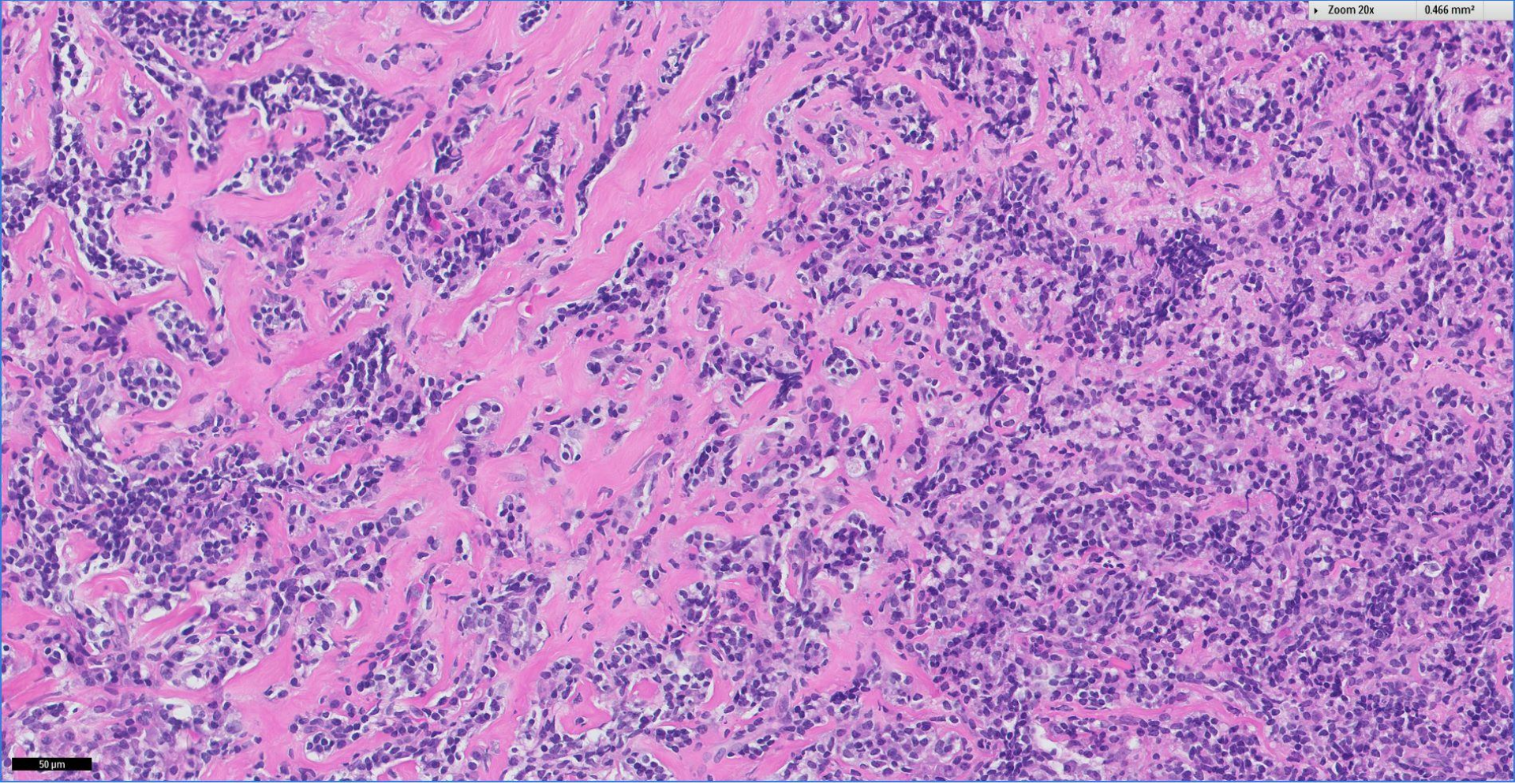
Zoom 60x 0.052 mm<sup>2</sup>



20 μm

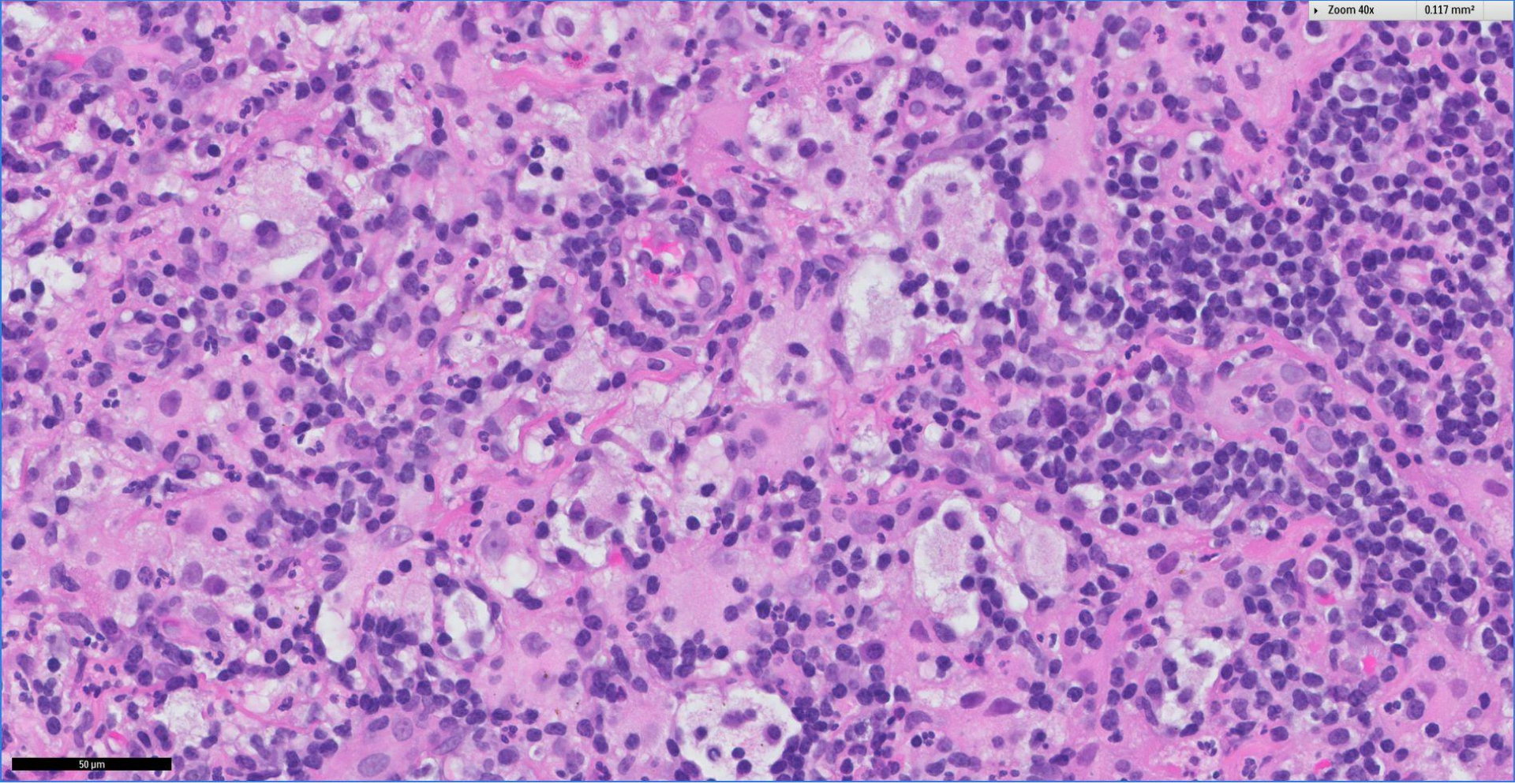
Zoom 20x

0.466 mm<sup>2</sup>

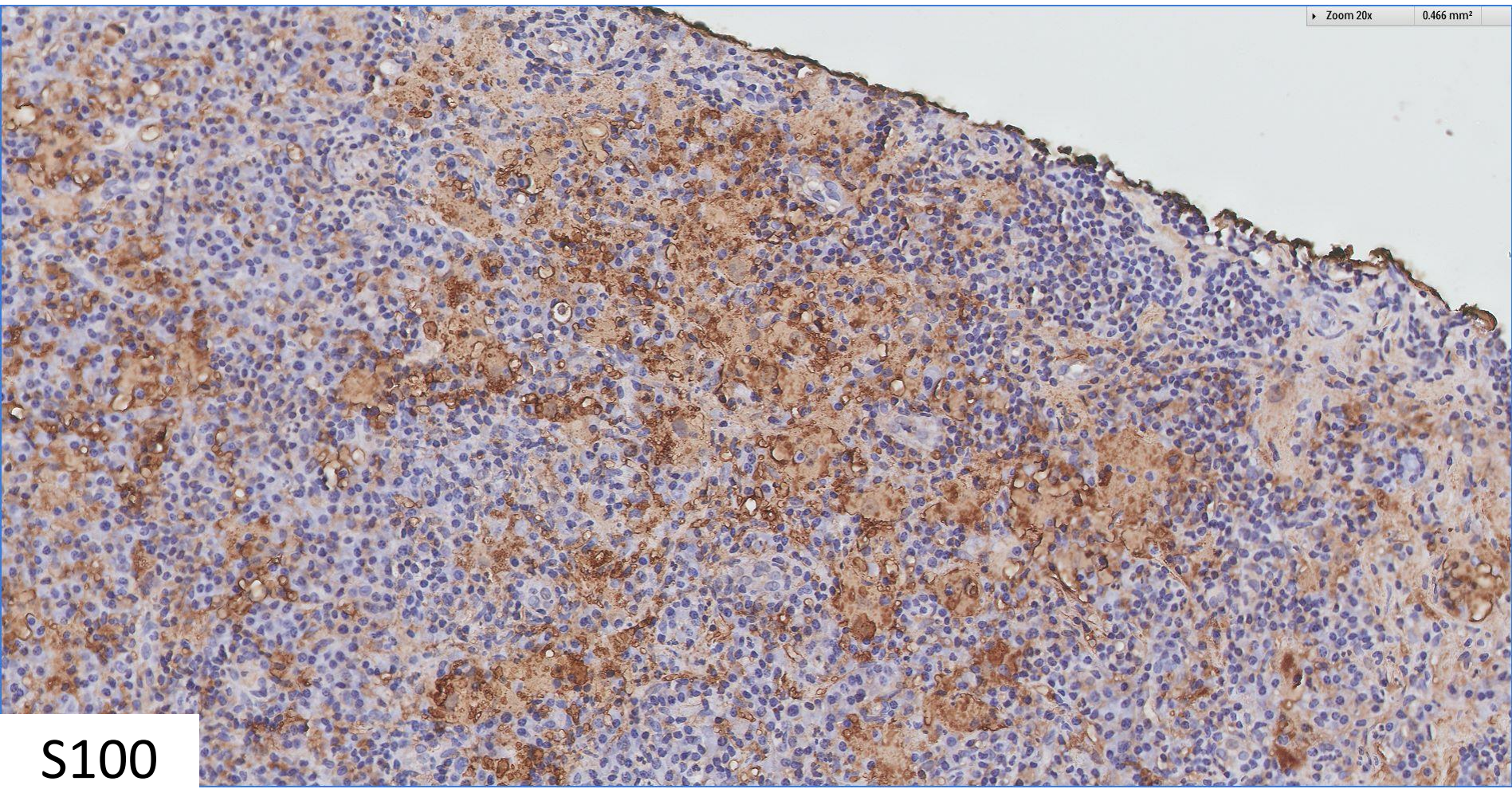


50 μm

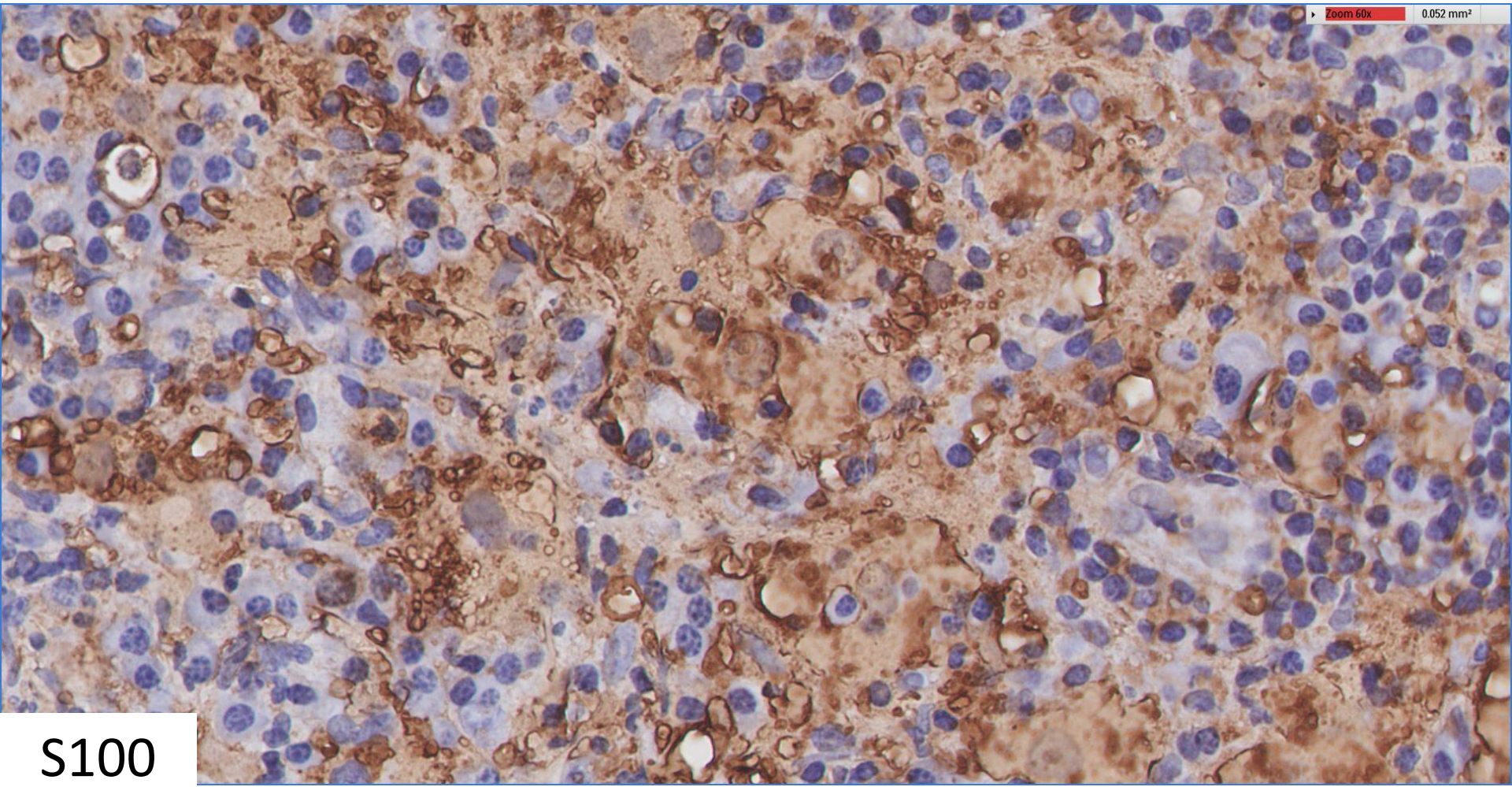
Zoom 40x 0.117 mm<sup>2</sup>



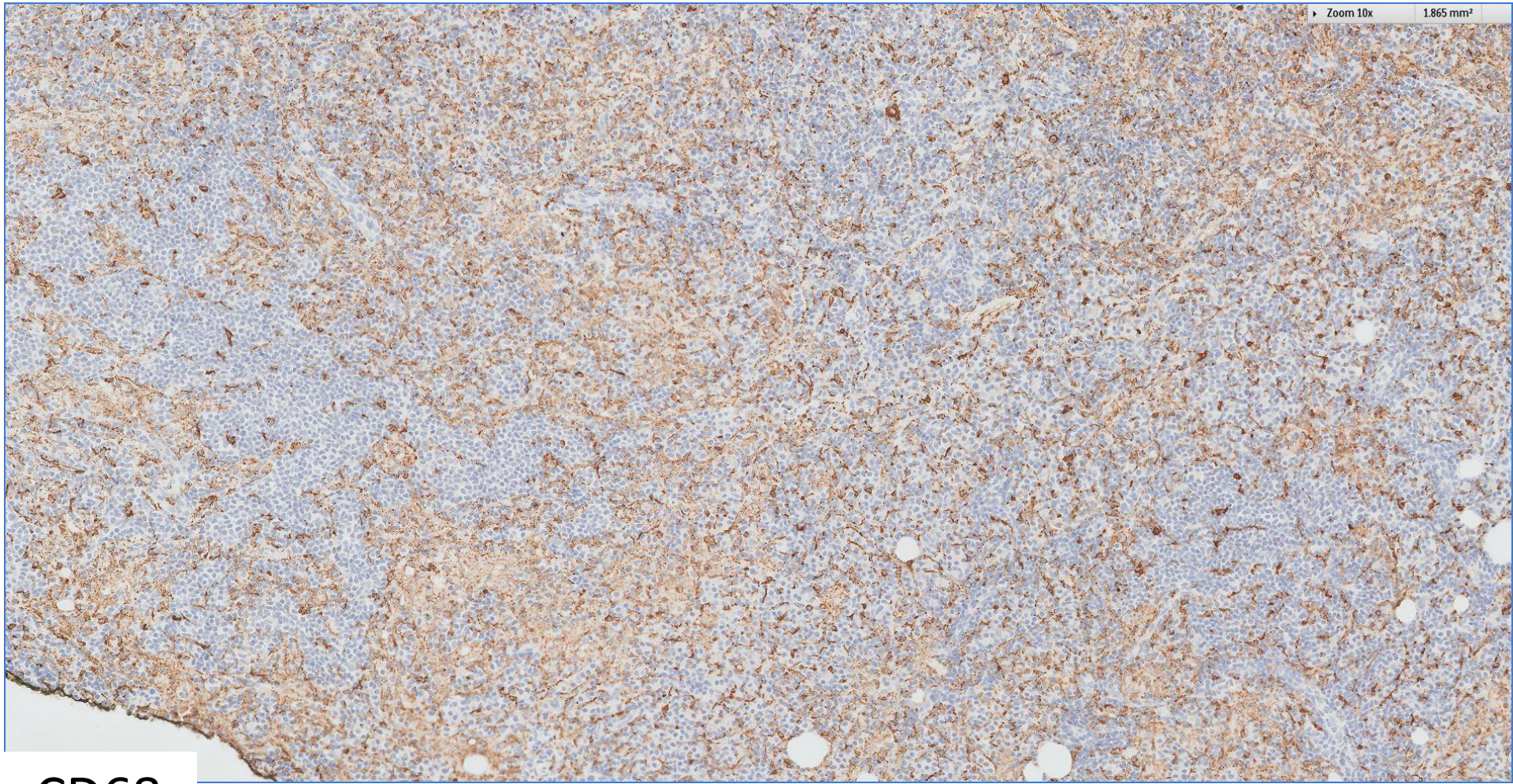
50 μm



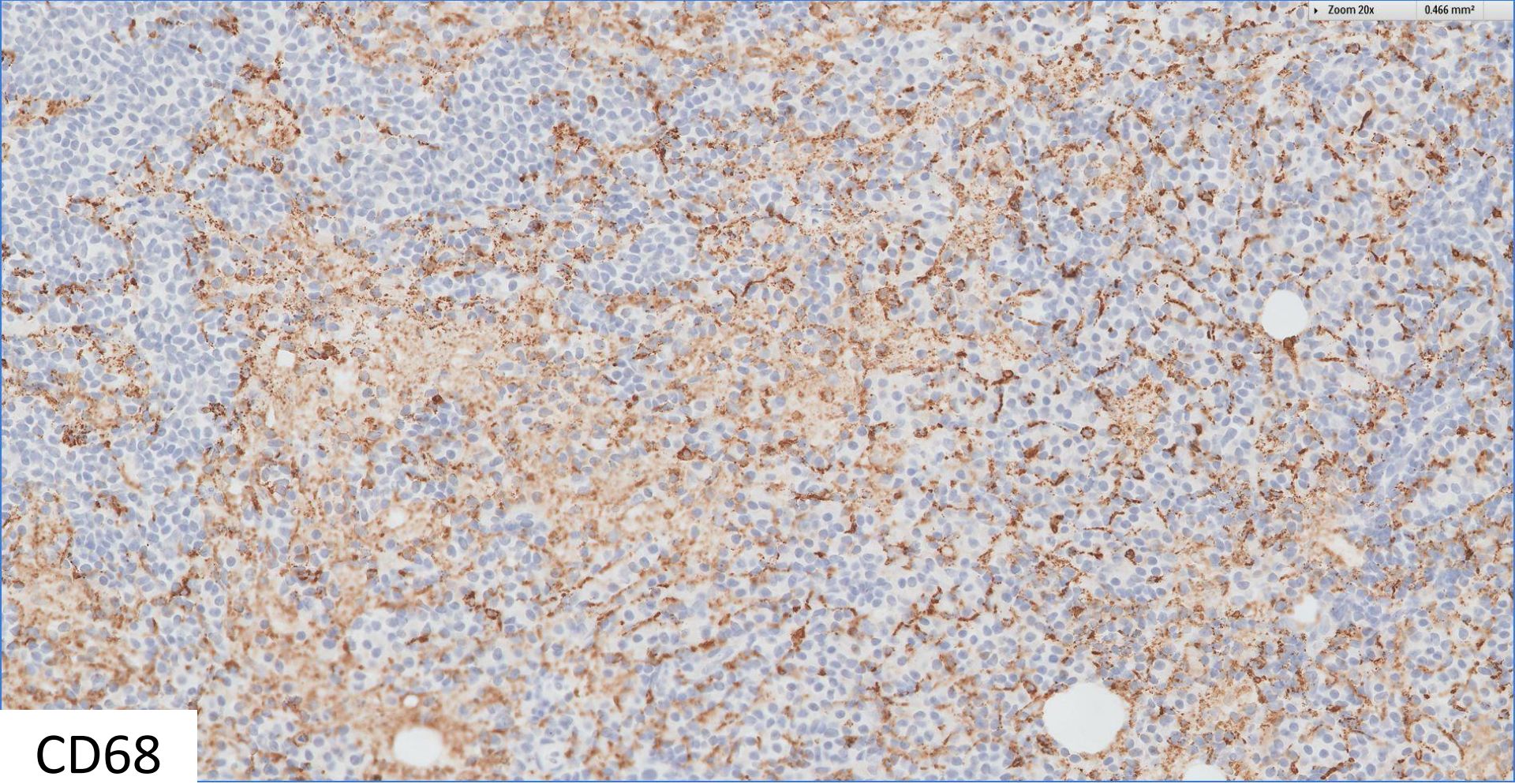
S100



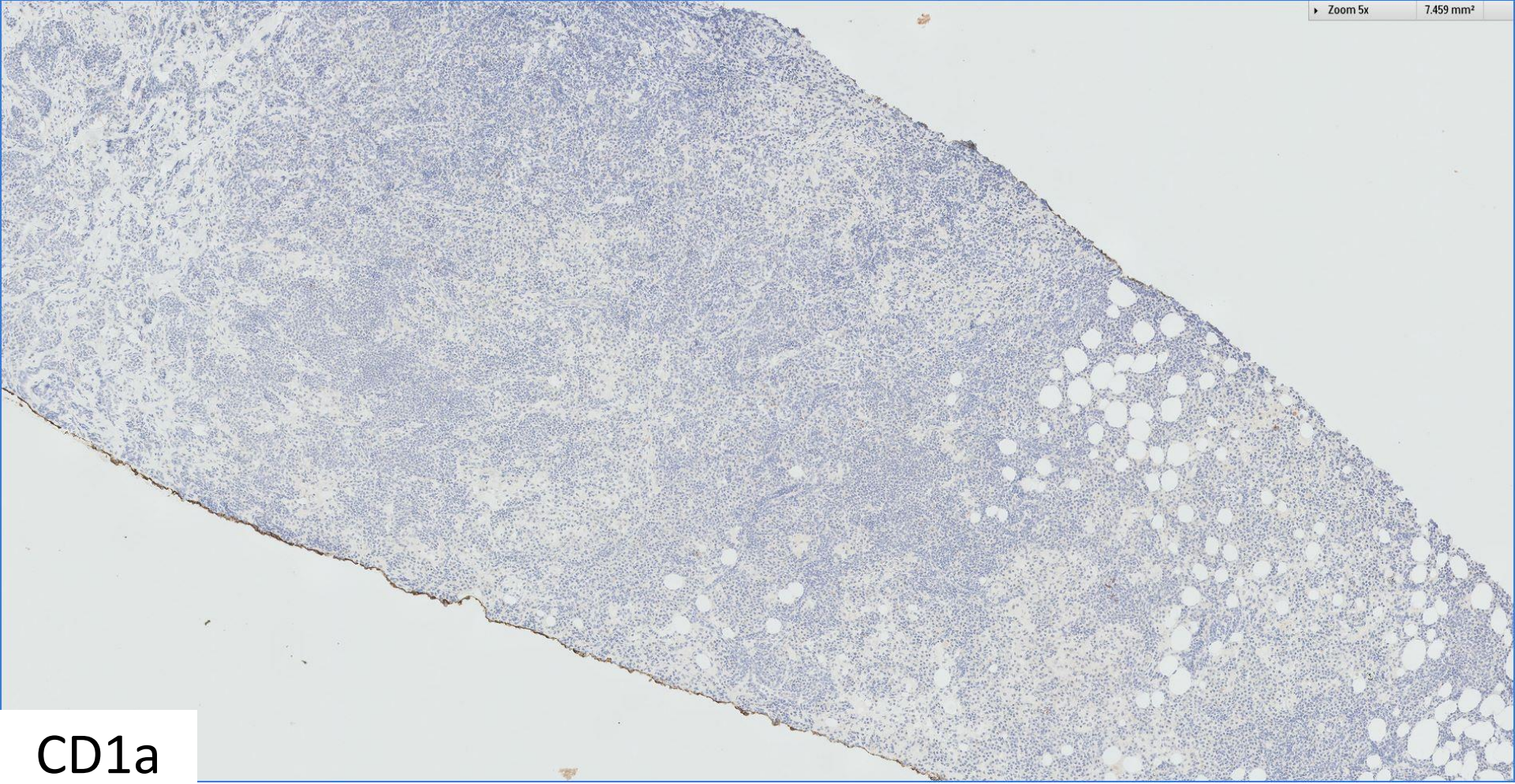
S100



CD68

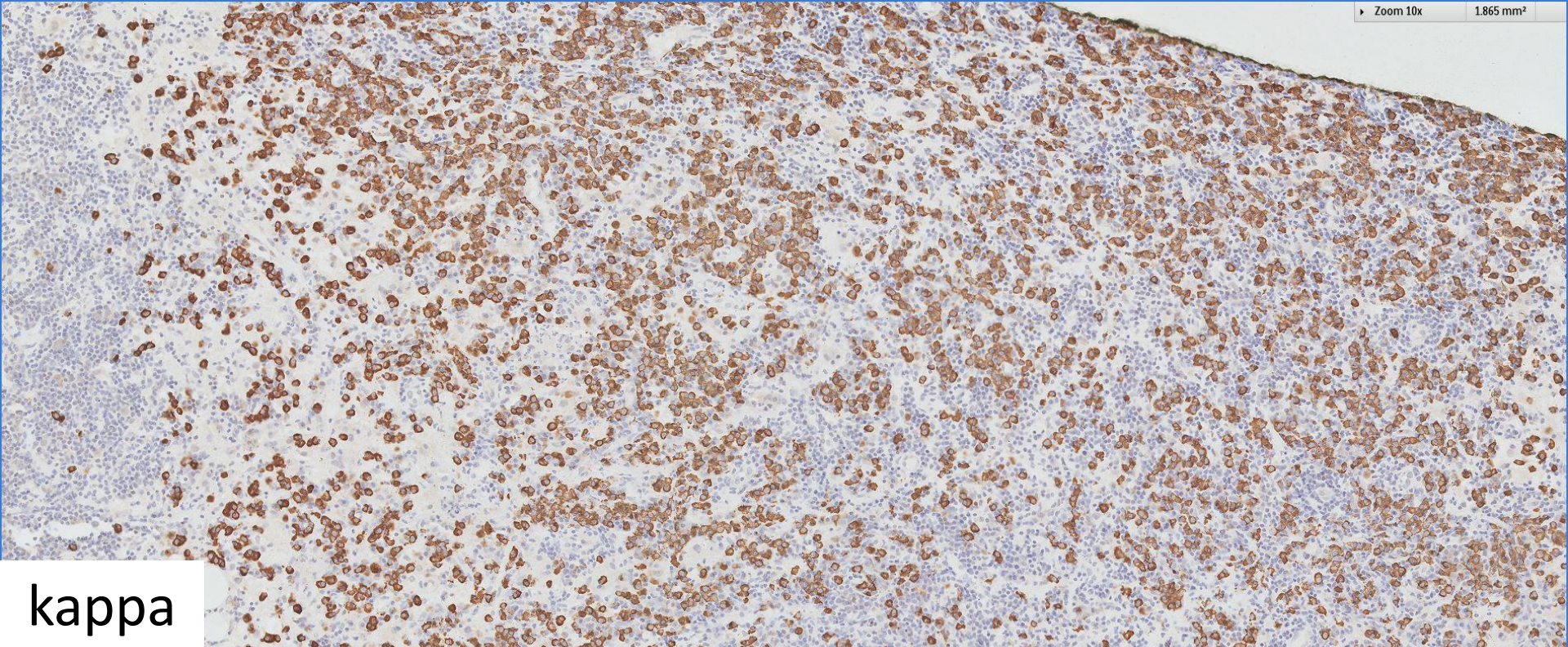


CD68

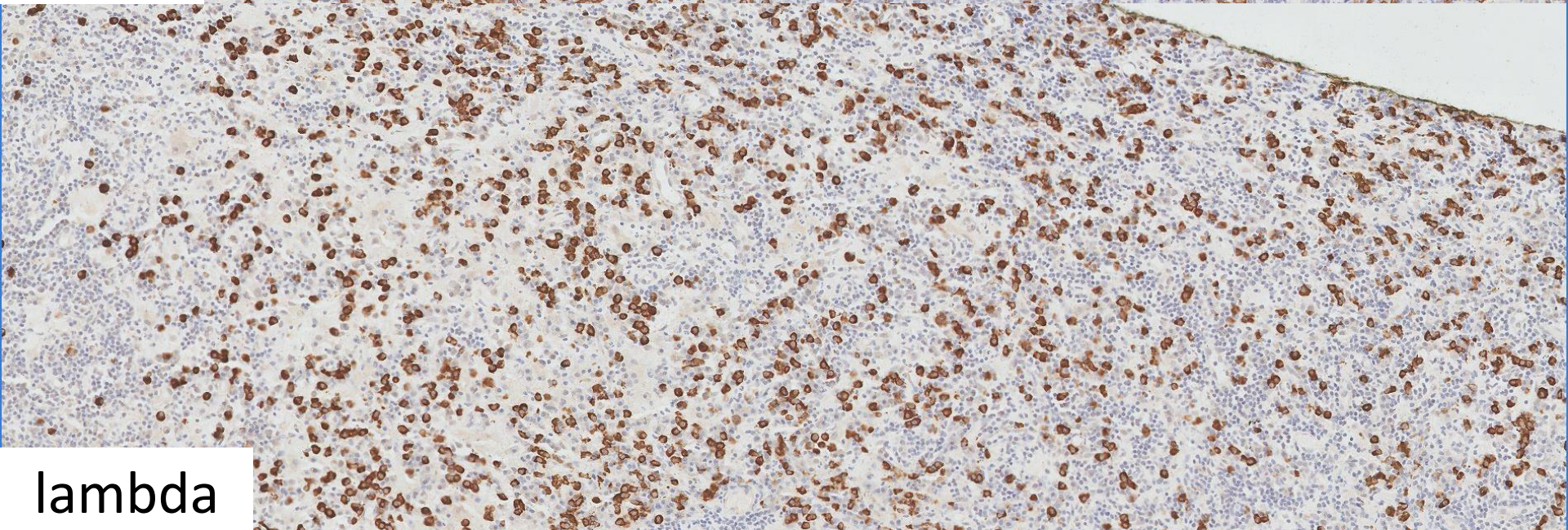


CD1a





kappa



lambda

Left breast nodule, core biopsy:

*Consistent with Rosai-Dorfman  
disease*



# Rosai-Dorfman disease of the breast

- Rosai-Dorfman disease ~ Sinus histiocytosis with massive lymphadenopathy.
- Unusual occurrence in the breast.
- Mimics cancer clinicoradiologically.
- Usually affects adults with median age in 6<sup>th</sup> decade.
- Marked female preponderance.
- Clinical presentation with a firm painless, ill-defined irregular mass.
- Usually single and unilateral; bilateral and multifocal disease may be associated with more widespread extramammary lesions.



# Rosai-Dorfman disease of the breast

- Microscopic hallmark of RDD is emperipolesis.
- Emperipolesis: Greek origin
  - ‘*em*’ is inside, ‘*peri*’ is around, ‘*polemai*’ is wander about.
  - Engulfment of intact lymphocytes, plasma cells, red blood cells, neutrophils.
  - Contrasts with phagocytosis in which ingested cells are digested.
- Histiocytes are positive for S100, CD68, and negative for CD1a.
- Generally indolent biological behaviour.
- Recurrence after excision has been reported.
- Rare instances of persistent and progressive disease.



 Breast  
Pathology  
Course 2014

