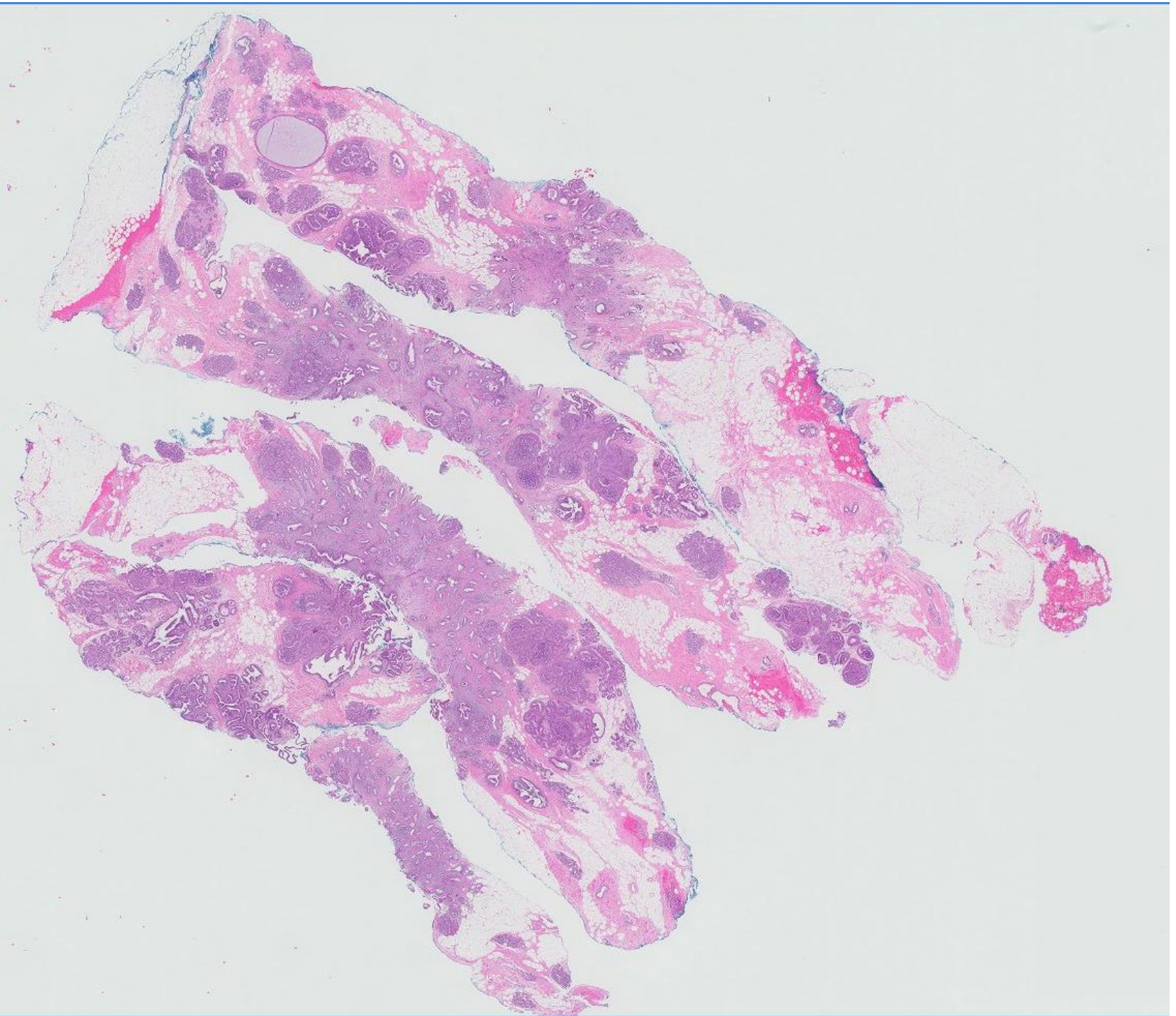


Case 26

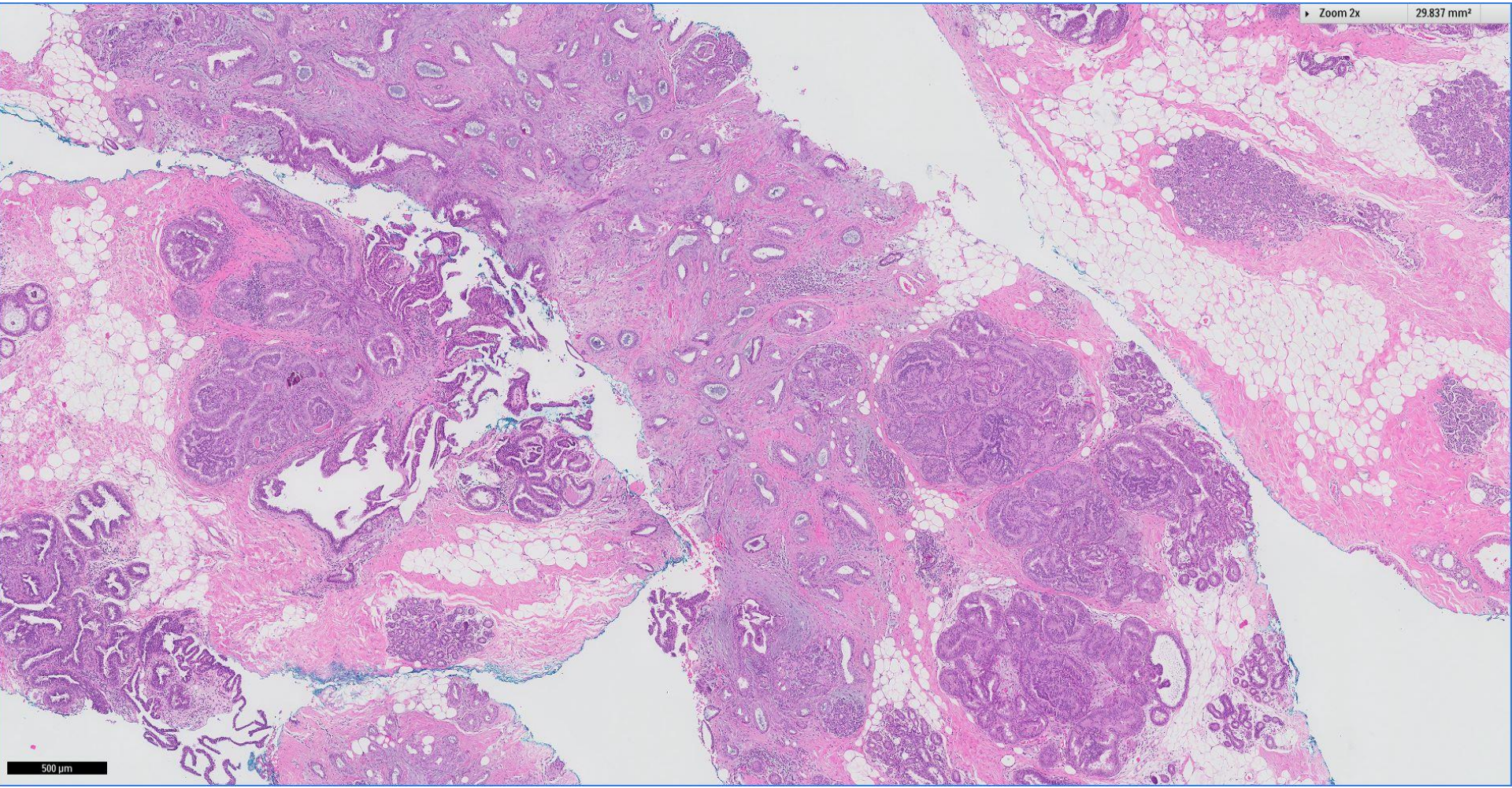
42 year old woman underwent
mammotome biopsy of a right breast
lump.





Zoom 2x

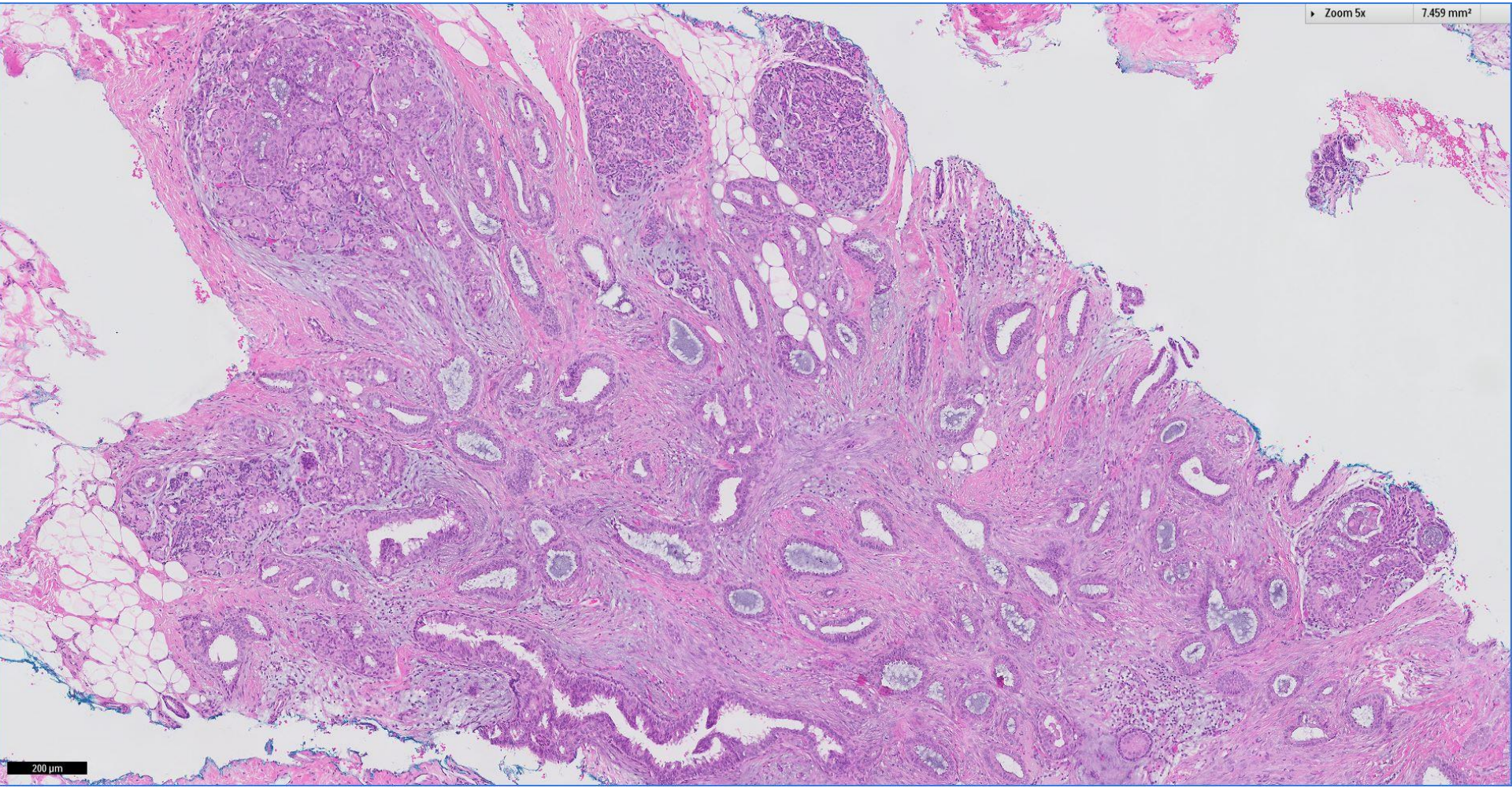
29.837 mm²



500 μ m

Zoom 5x

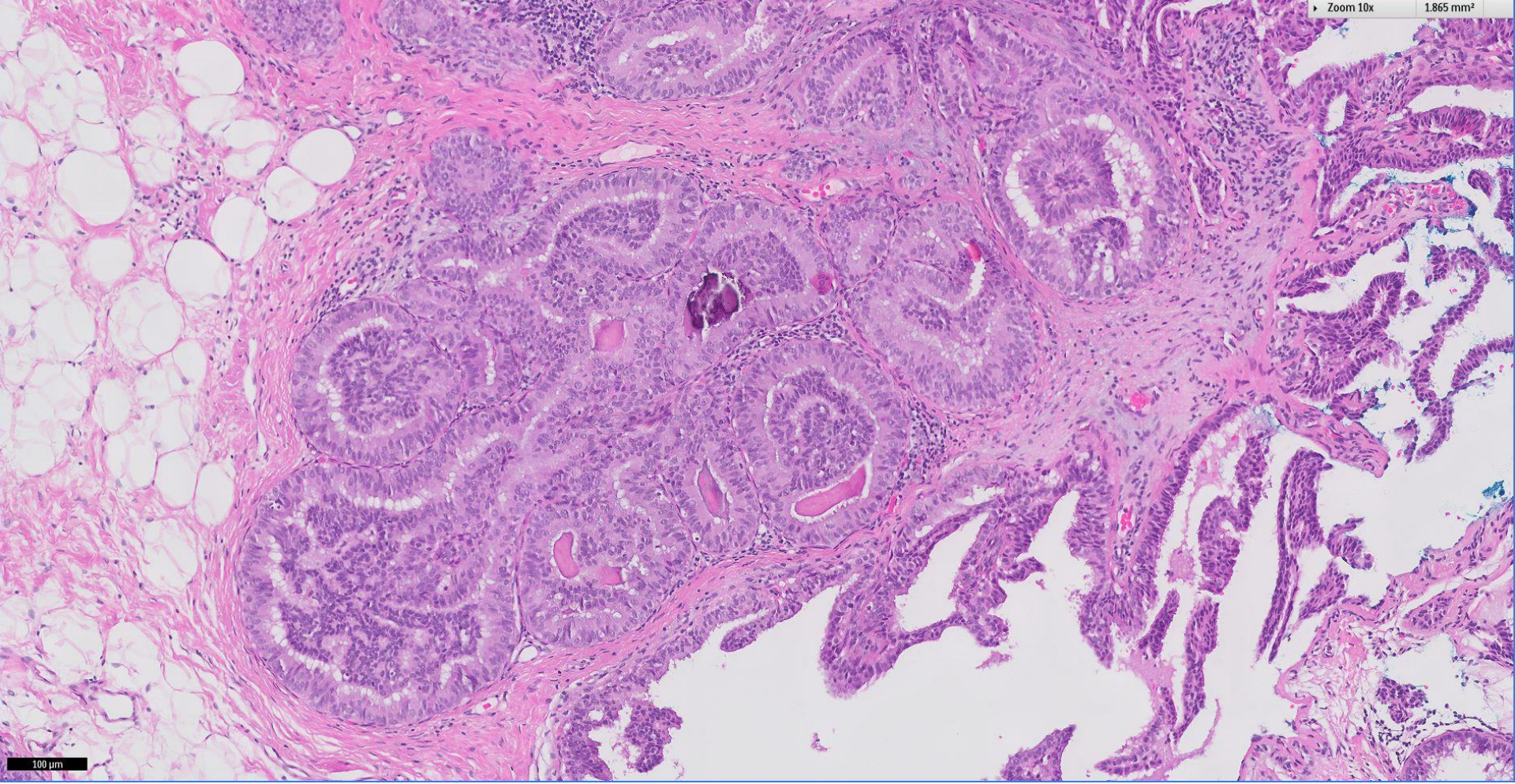
7.459 mm²



200 μ m

Zoom 10x

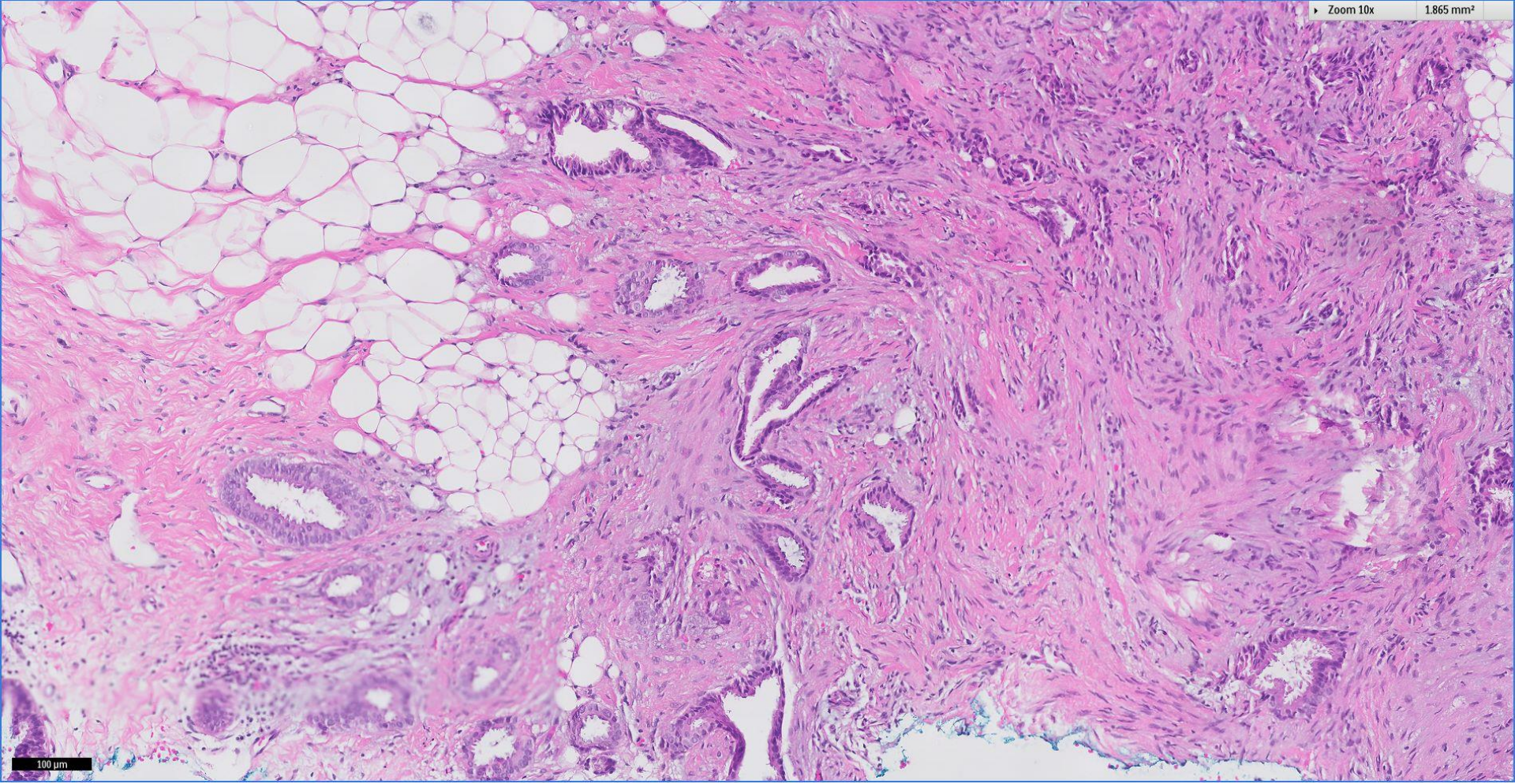
1.865 mm²



100 μ m

Zoom 10x

1.865 mm²

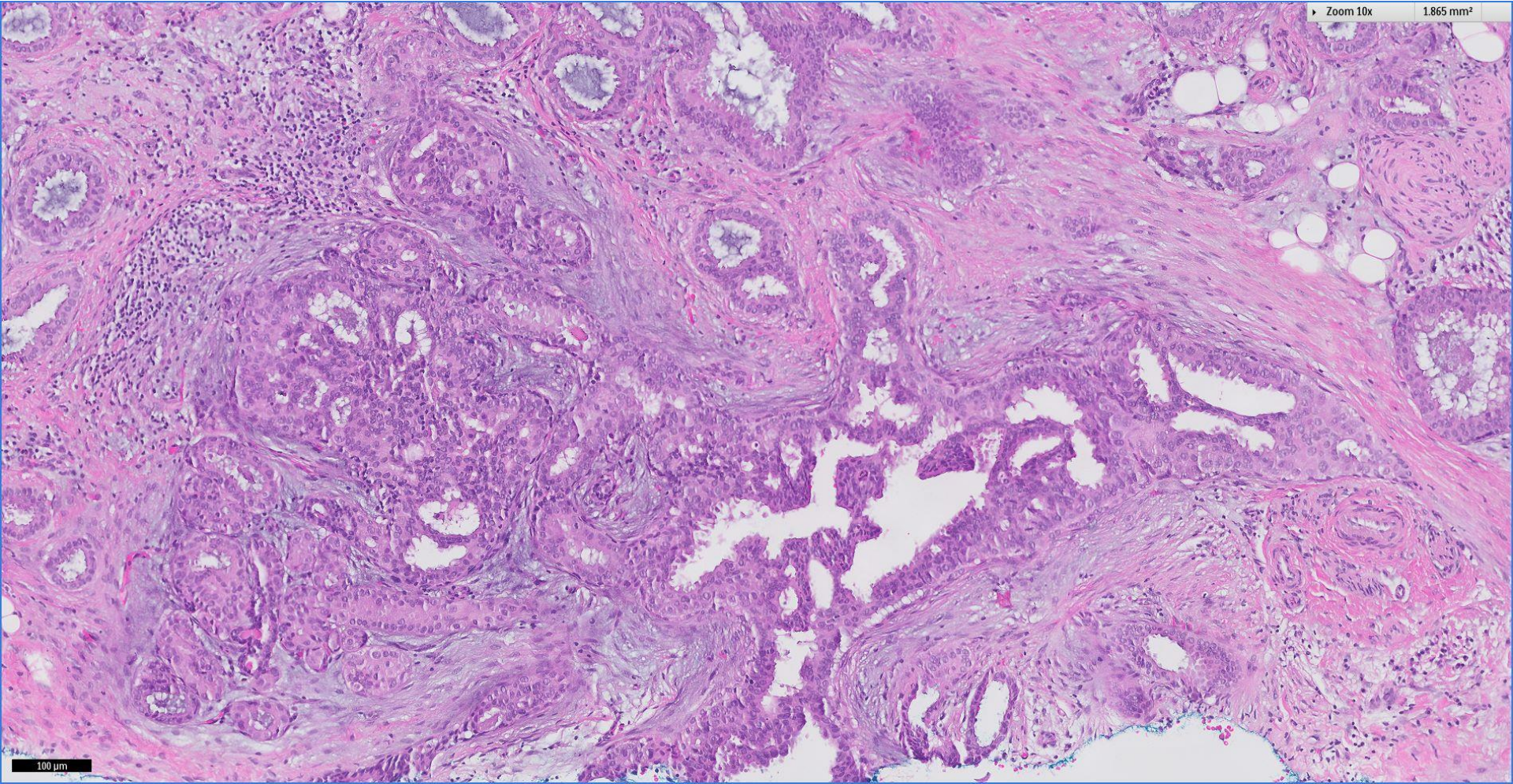


100 μ m



Zoom 10x

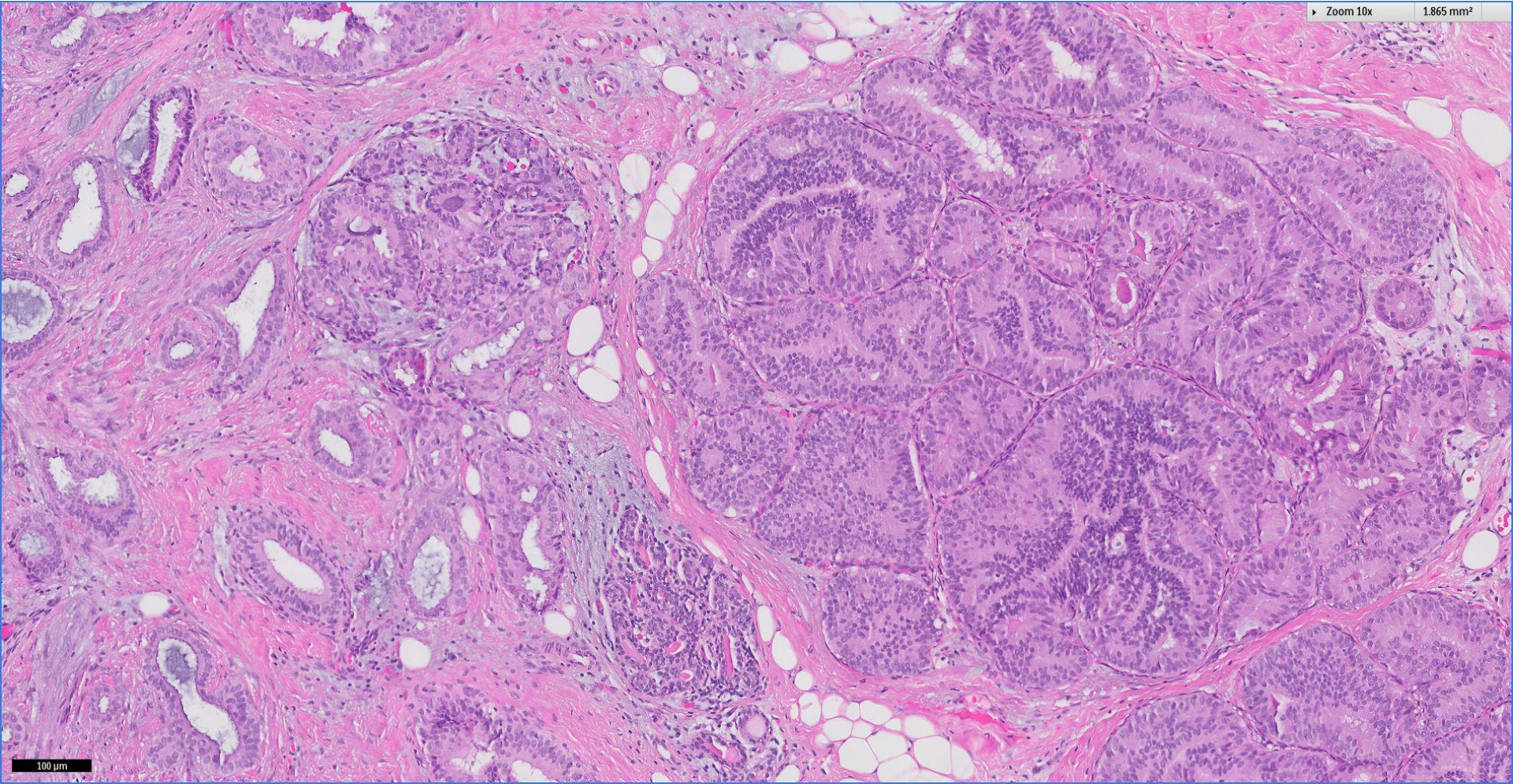
1.865 mm²



100 μm

Zoom 10x

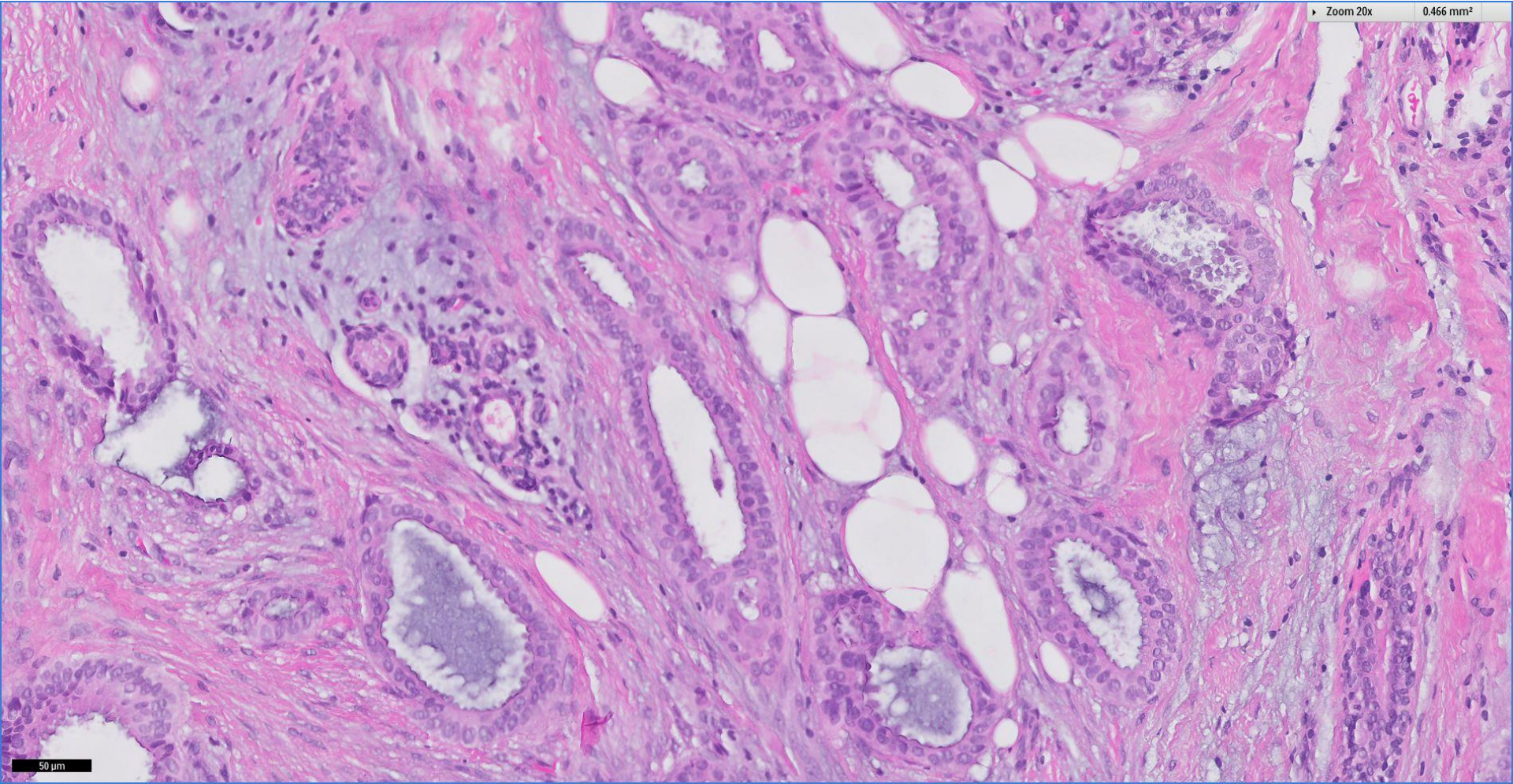
1.865 mm²



100 µm

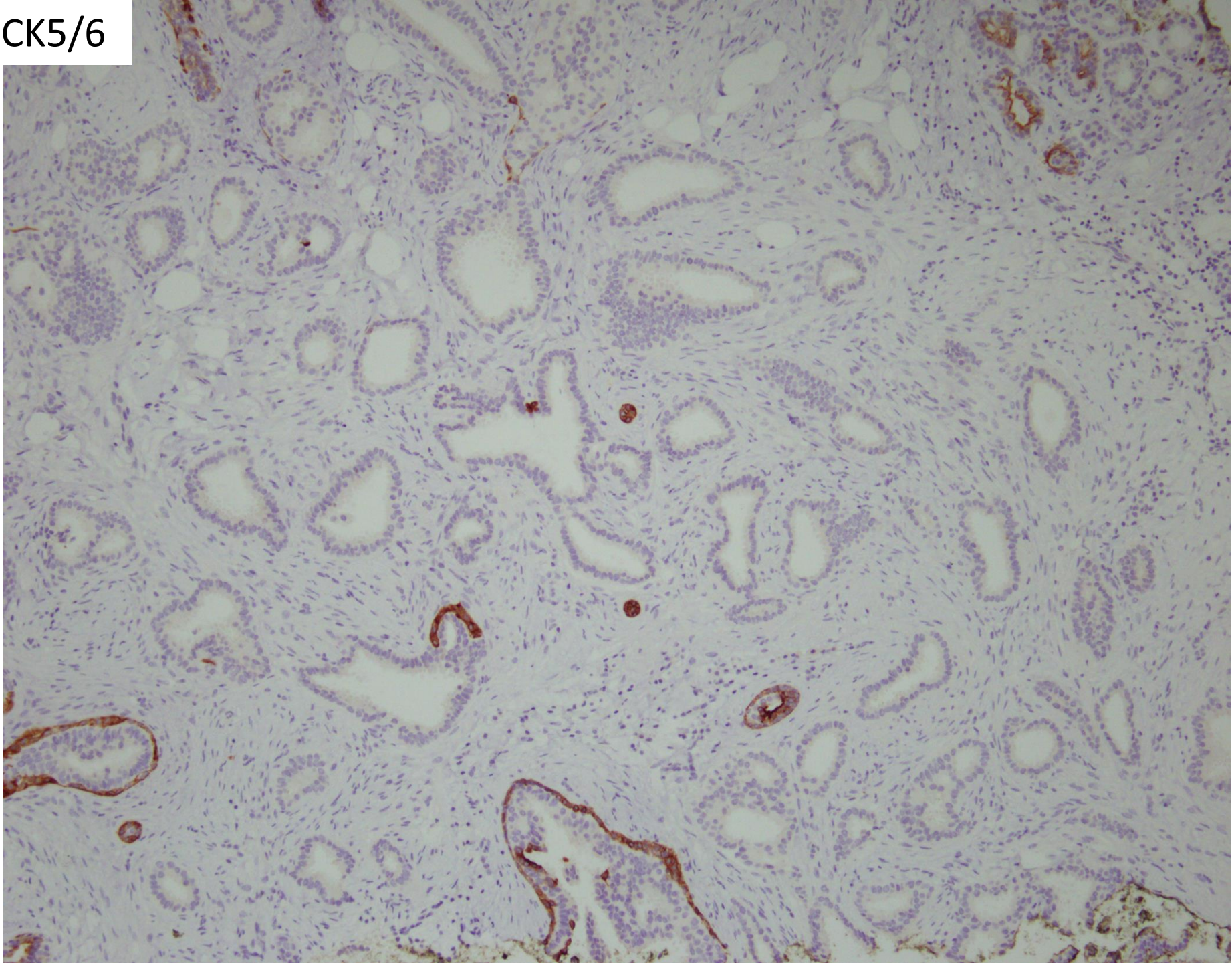
Zoom 20x

0.466 mm²

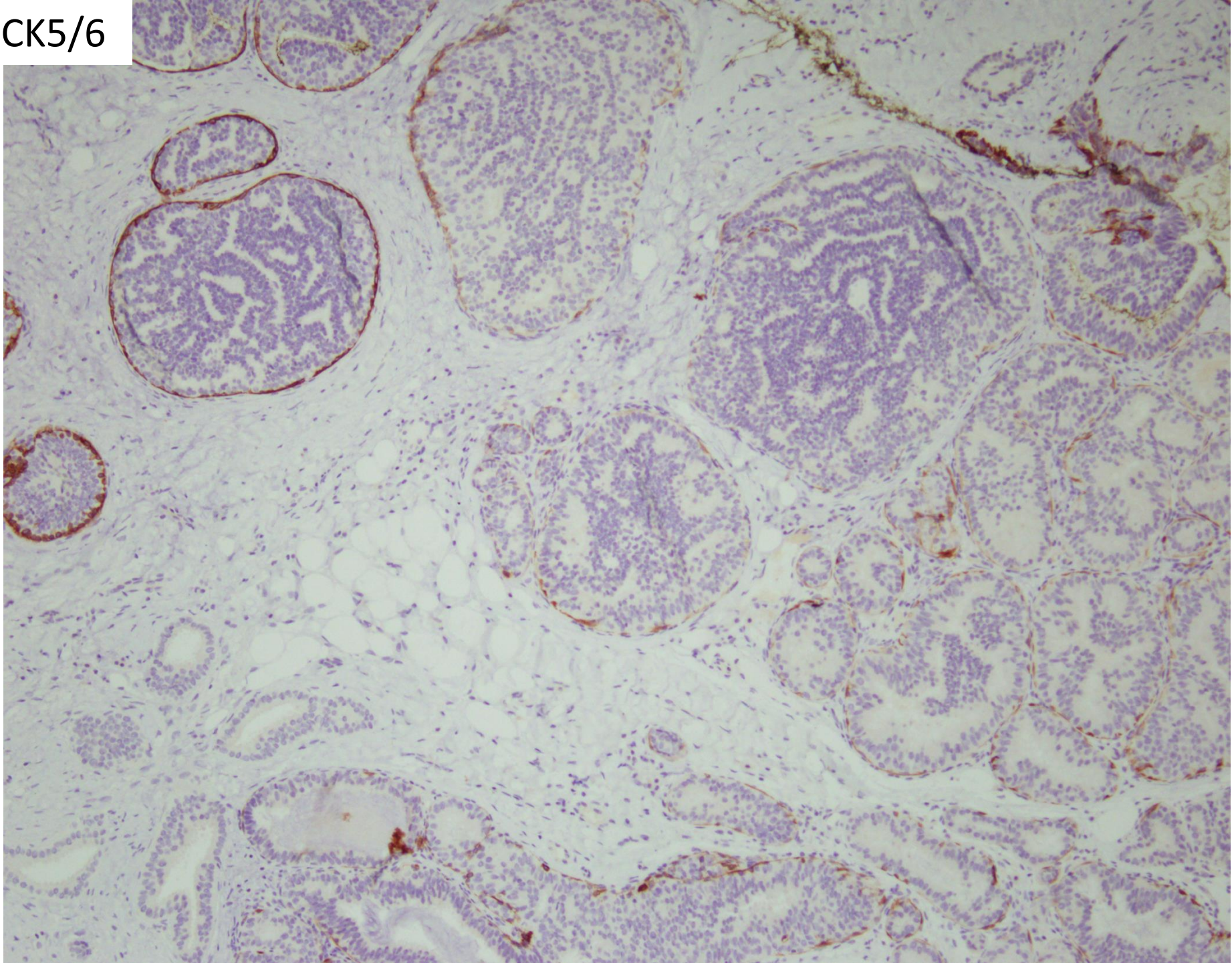


50 μm

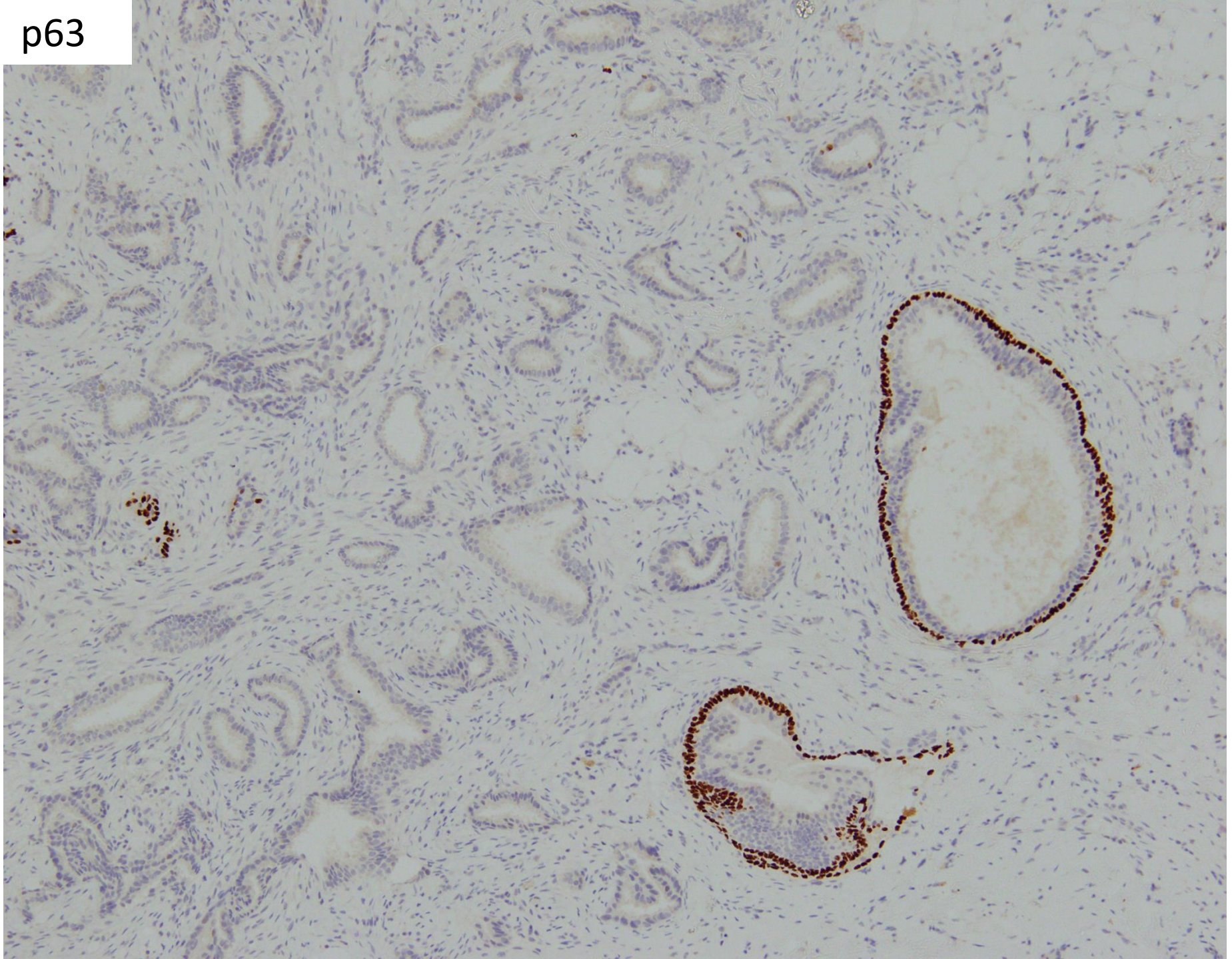
CK5/6



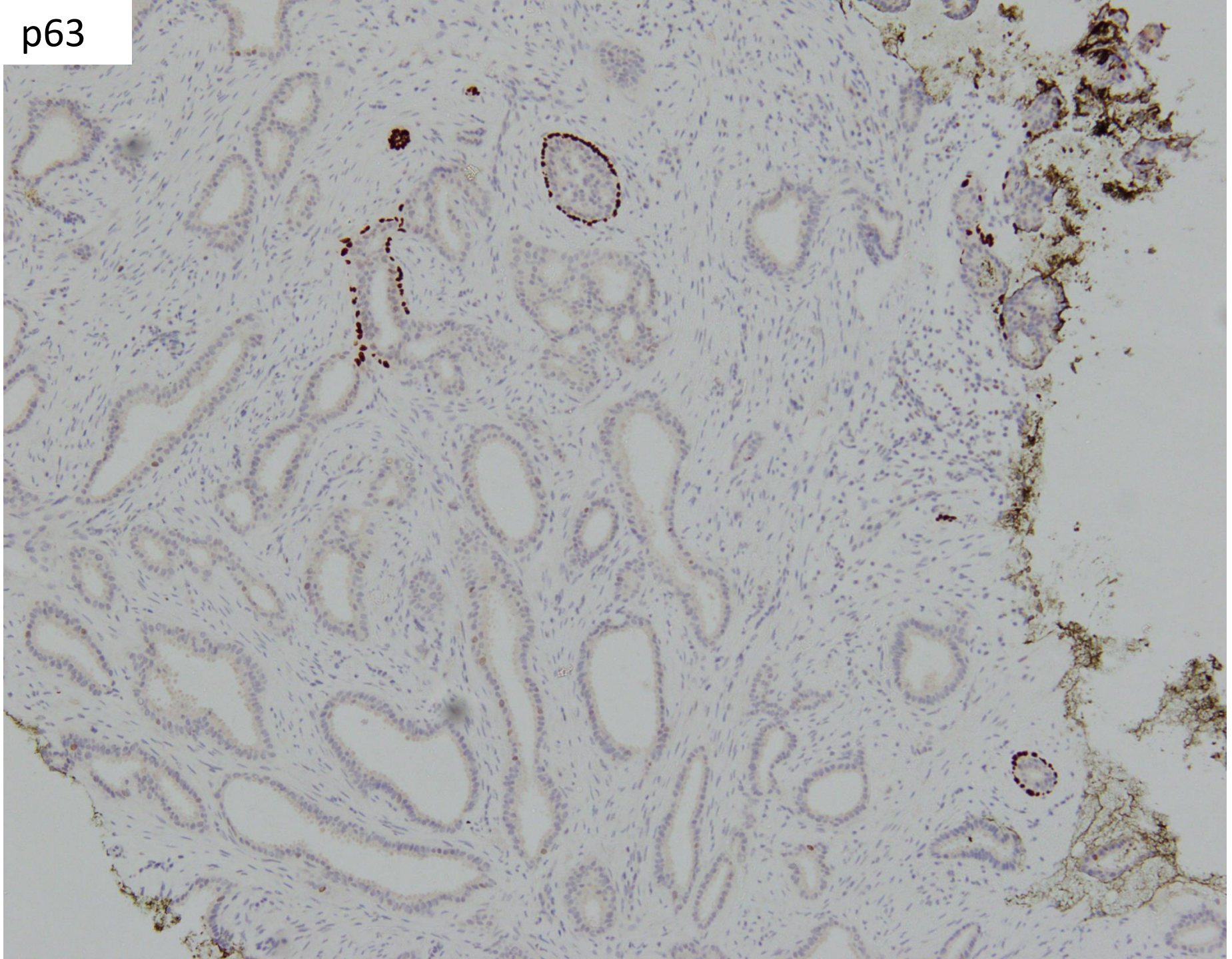
CK5/6



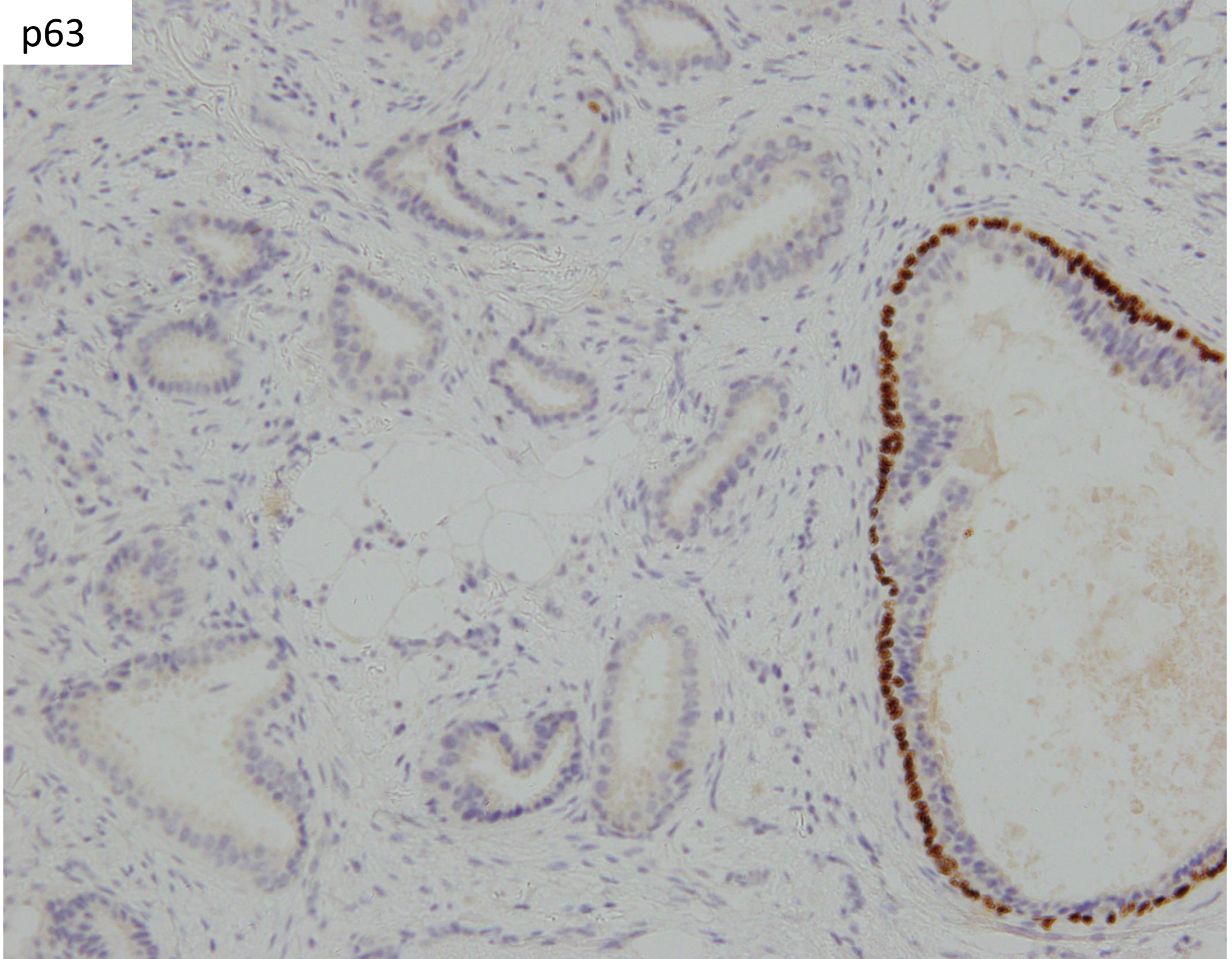
p63



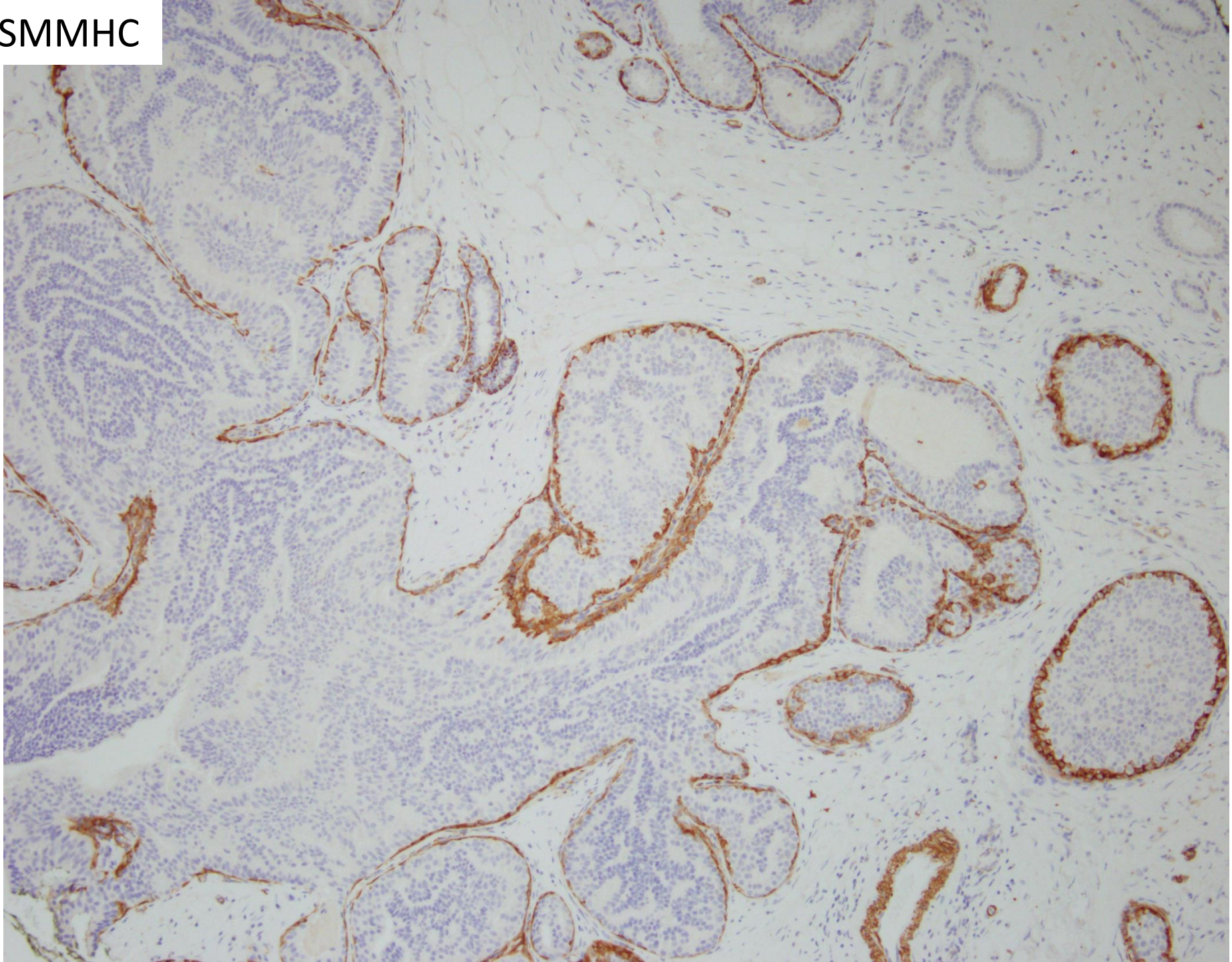
p63



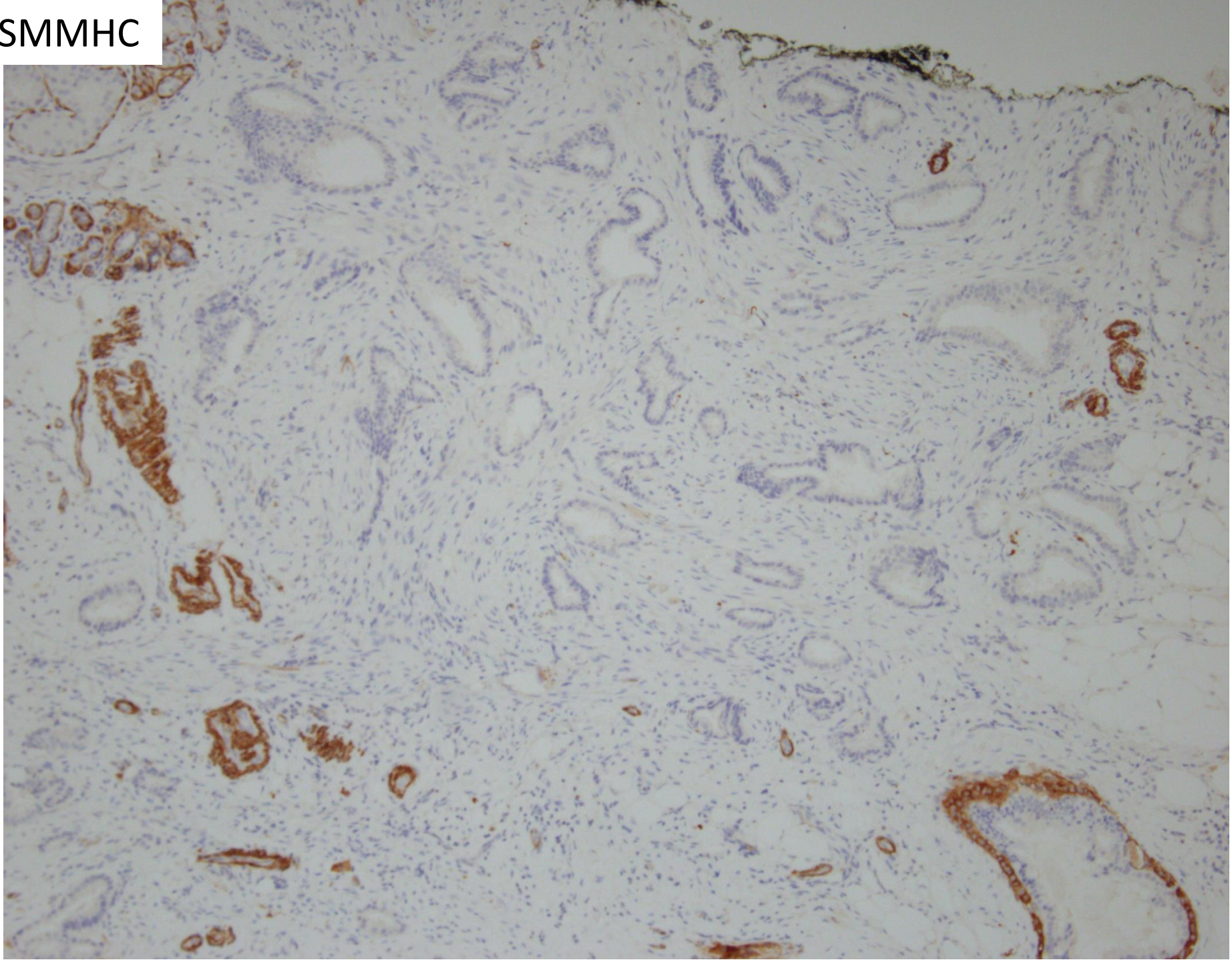
p63



SMMHC



SMMHC





ER

This histological image shows a section of endometrial tissue. The glands are stained brown, indicating the presence of estrogen receptors (ER). The glands are arranged in a somewhat regular pattern, with some showing a more complex, branched structure. The surrounding stroma is stained light blue, representing the nuclei of the cells. The overall appearance is that of a well-organized endometrial tissue with significant ER expression in the glandular epithelium.



ER

This histological image shows a section of endometrial tissue. The glands are stained brown, indicating the presence of estrogen receptors (ER). The surrounding stroma is stained blue, representing the nuclei of the cells. The glands are arranged in a somewhat irregular pattern, typical of the endometrium.

Mammotome biopsy, right breast lump:

*Invasive carcinoma with tubular features
ER positive, PR positive, cerbB2 negative*



 Breast
Pathology
Course 2014

