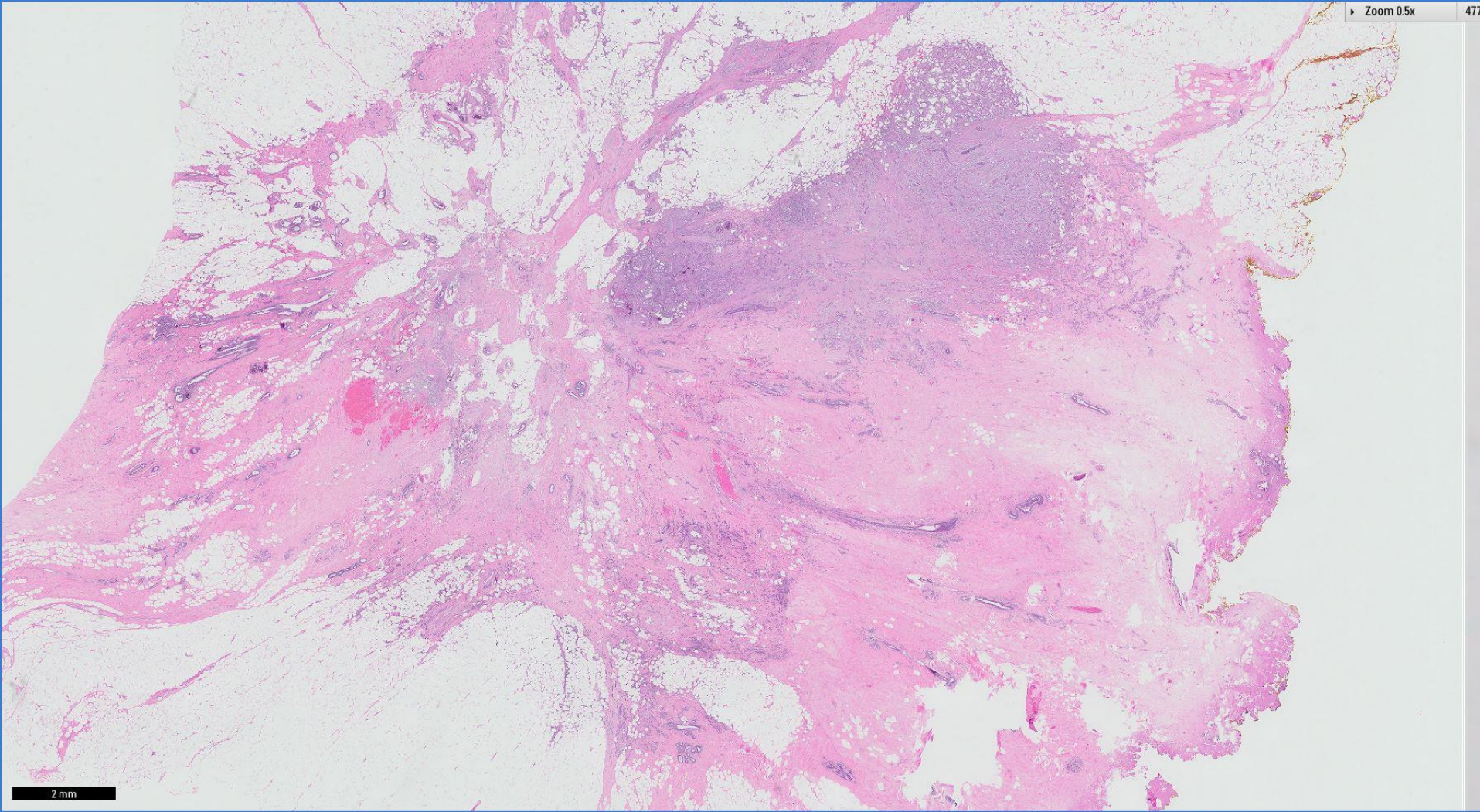


Case 25

52 year old woman with a right breast lump.

Wide excision performed.

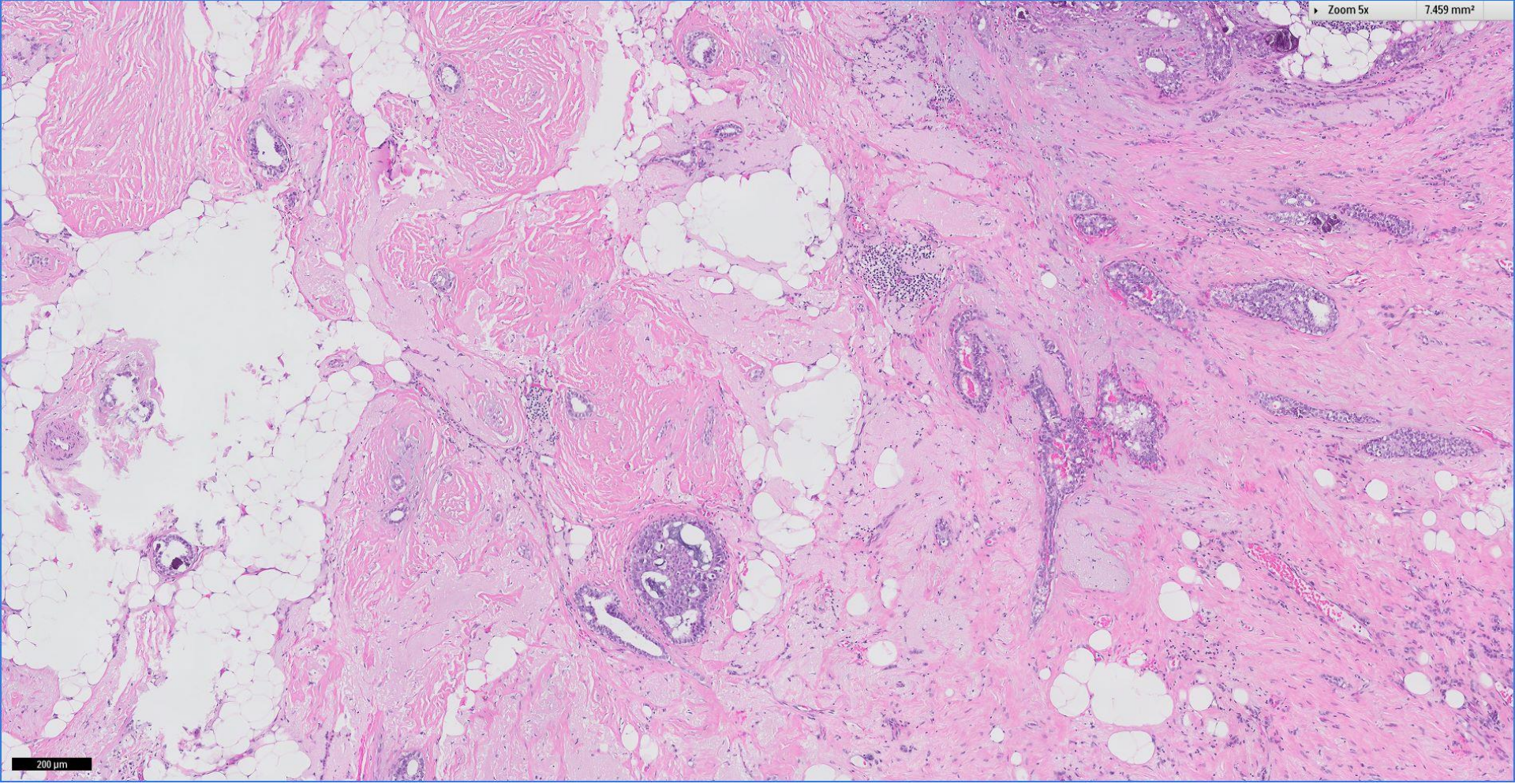




2 mm

Zoom 5x

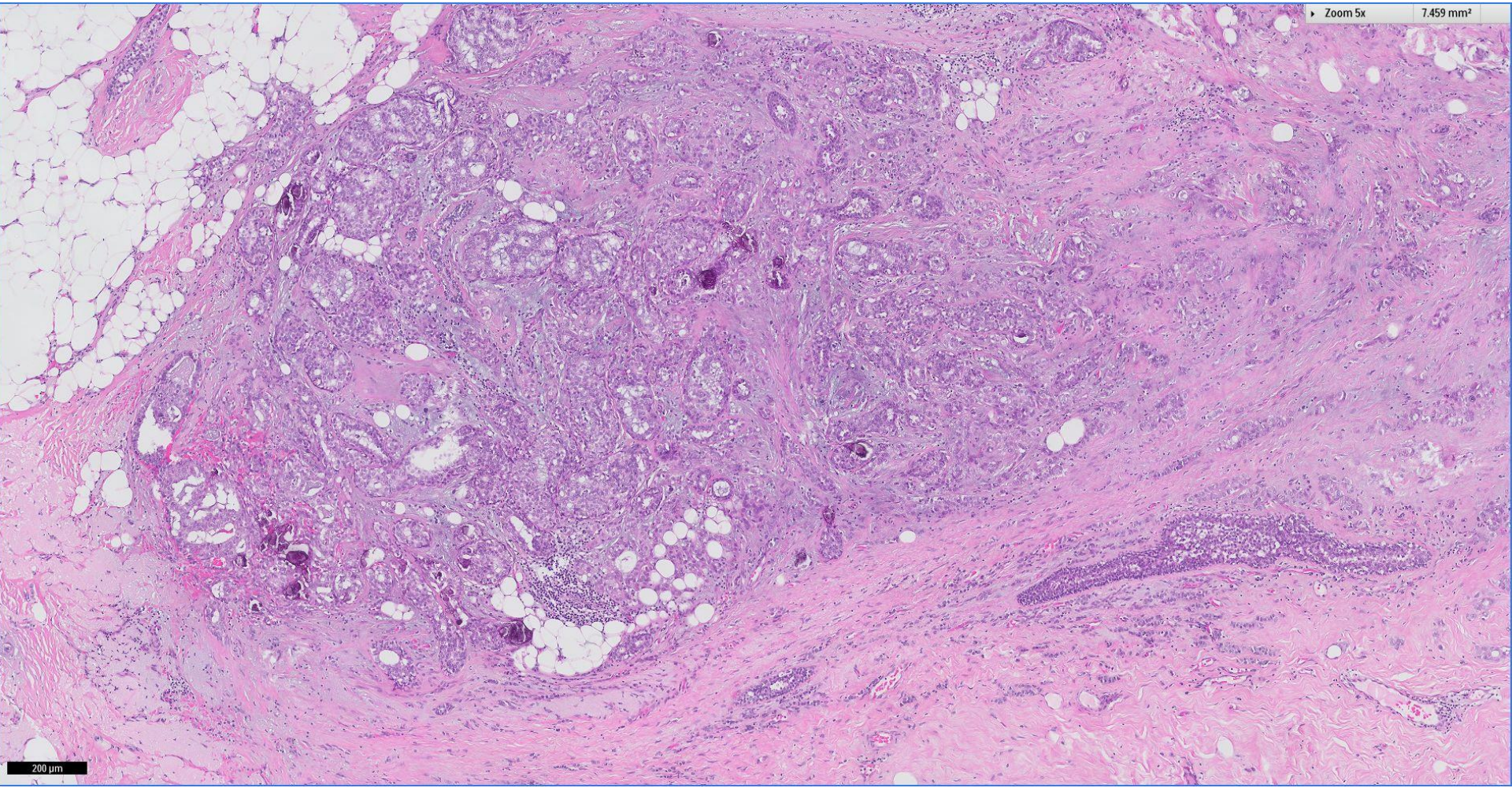
7.459 mm²



200 μ m

Zoom 5x

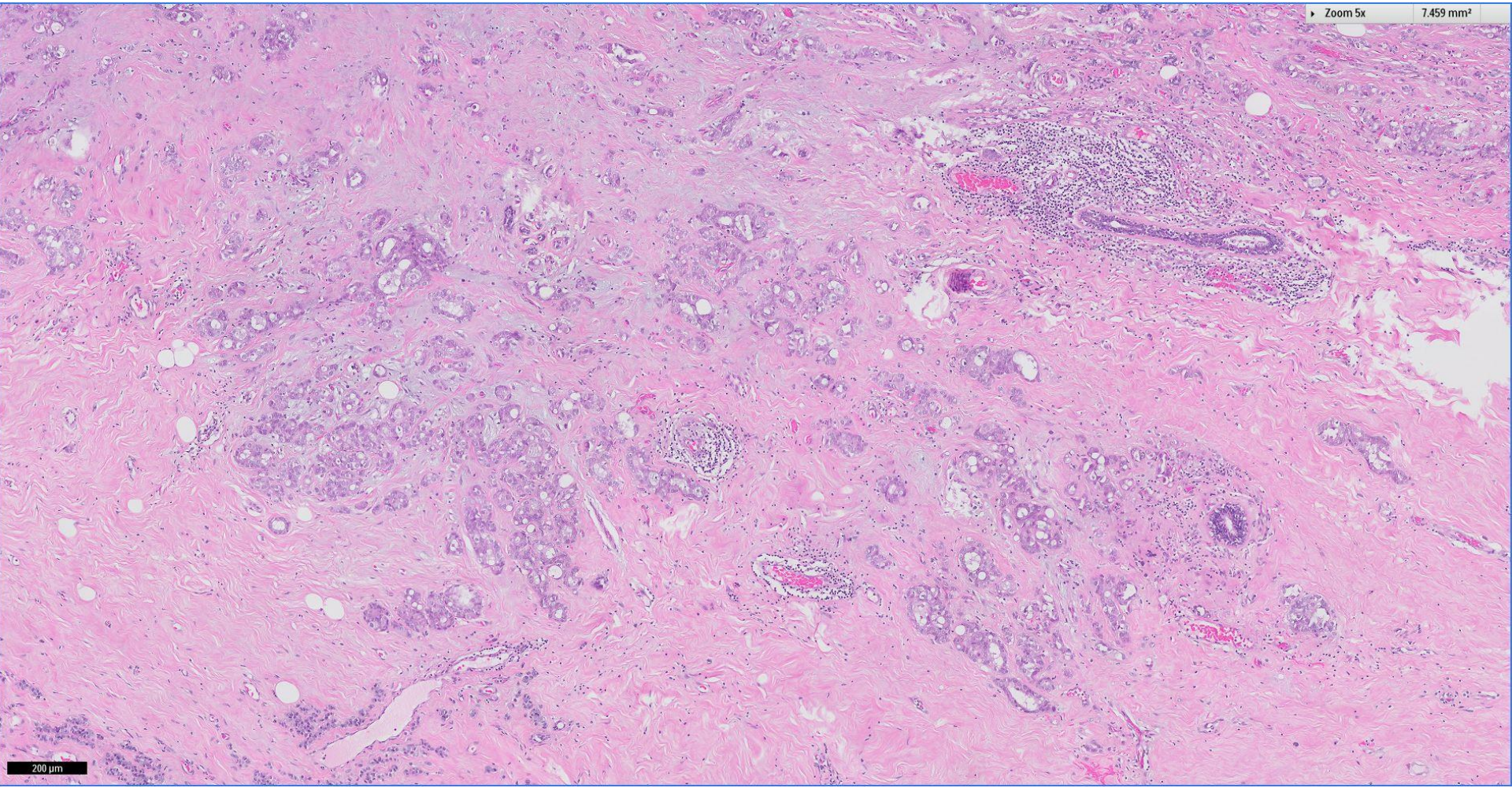
7.459 mm²



200 μ m

Zoom 5x

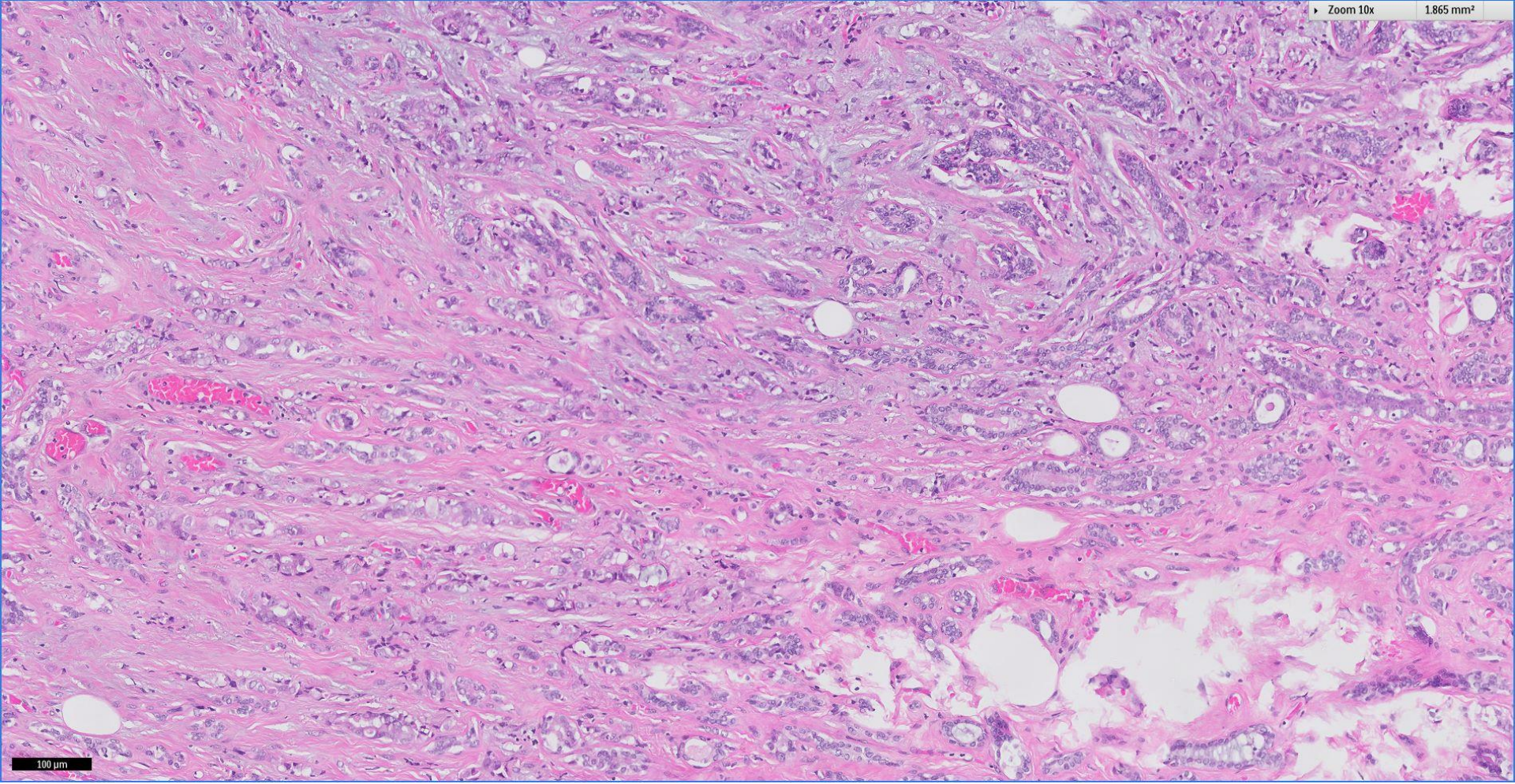
7.459 mm²



200 μ m

Zoom 10x

1.865 mm²

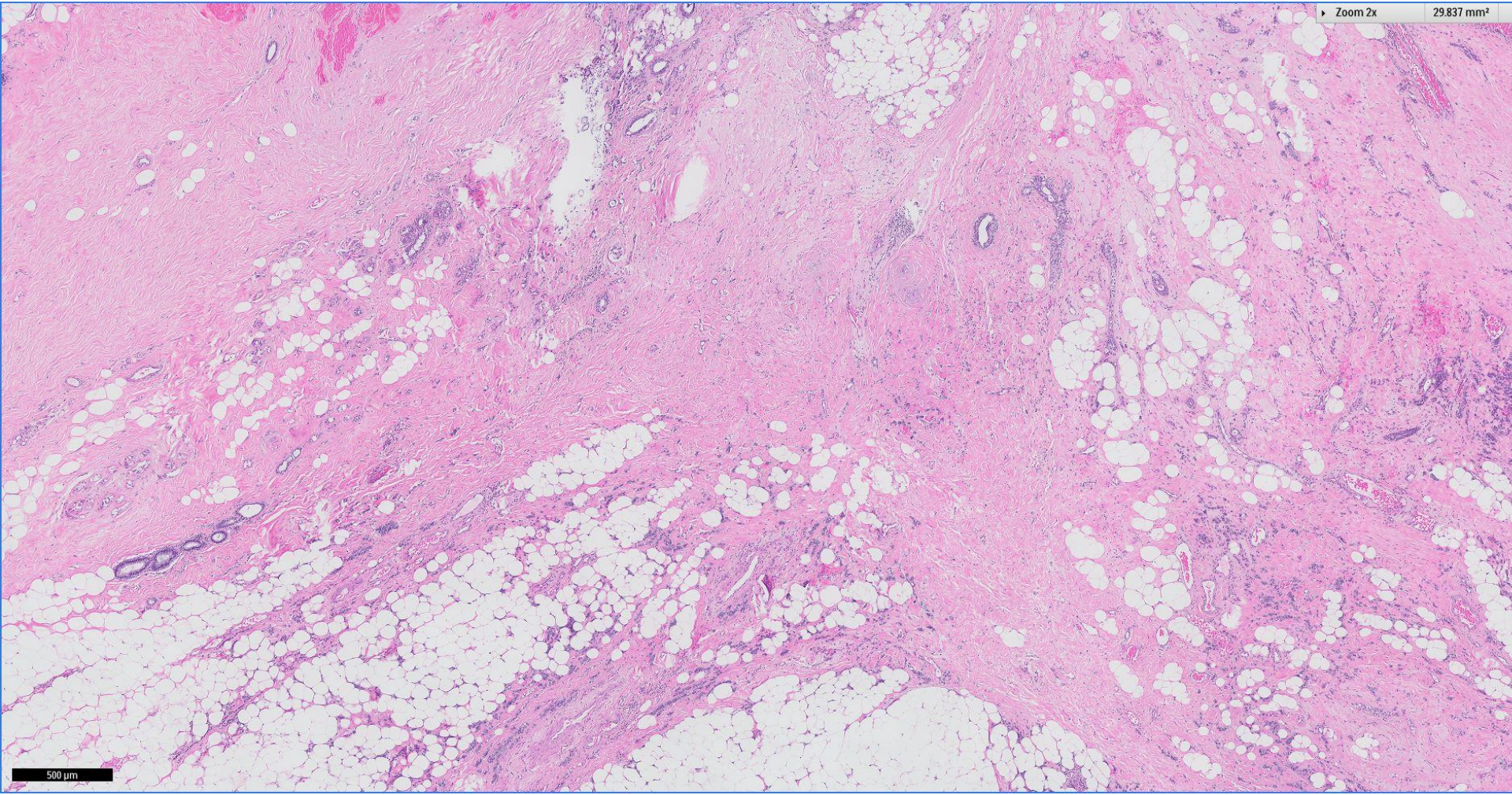


100 μm

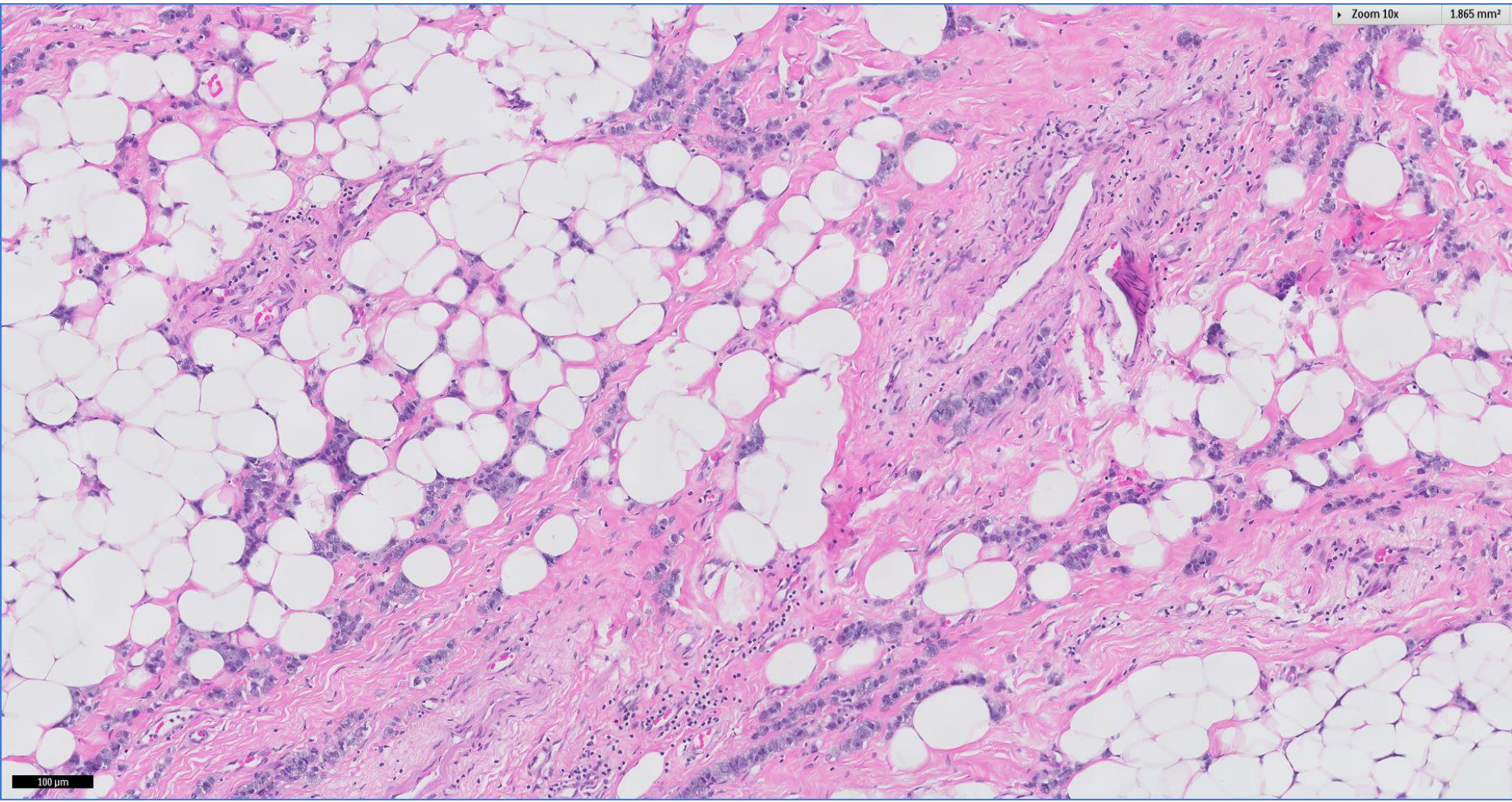


Zoom 2x

29.837 mm²

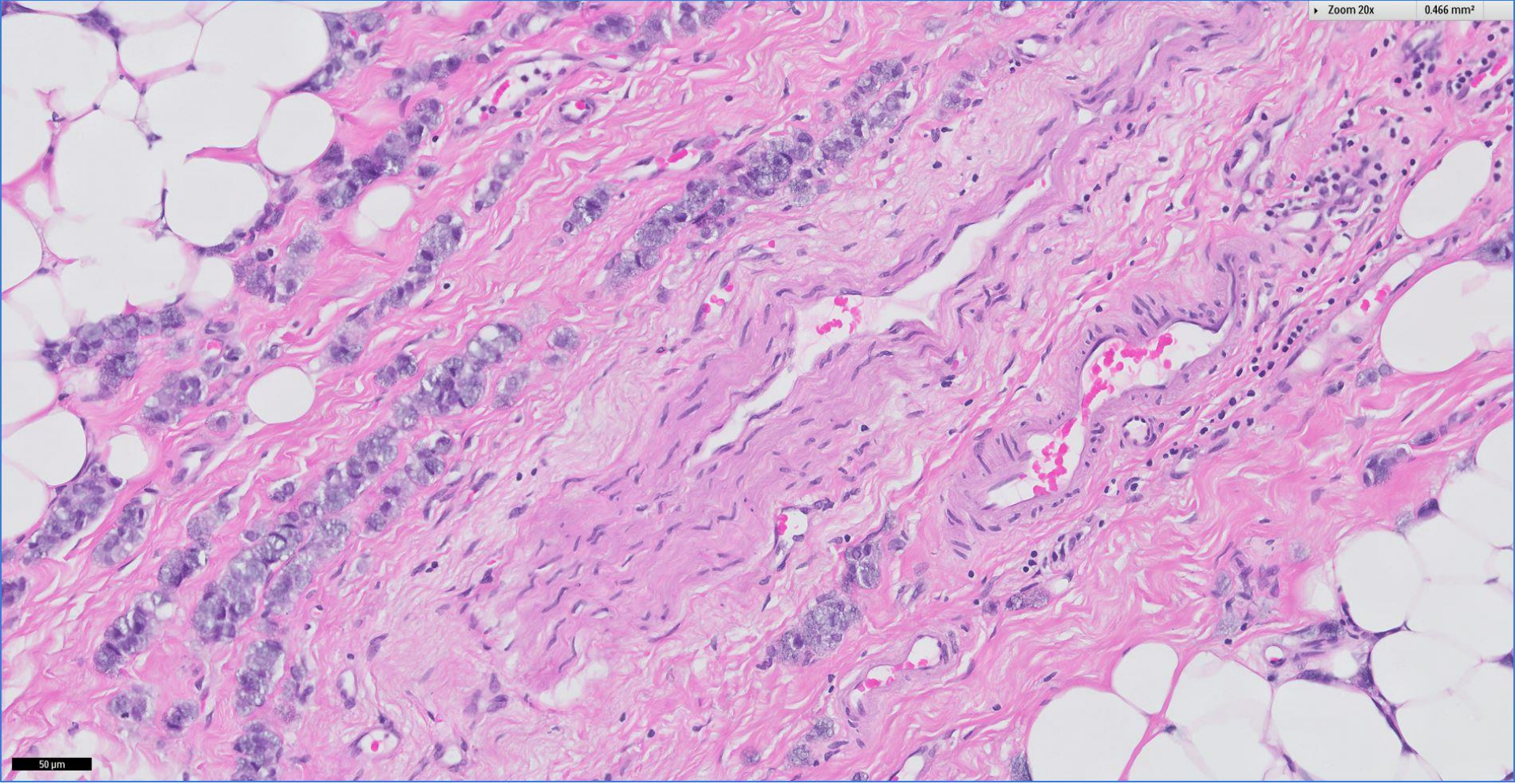


500 μm



Zoom 20x

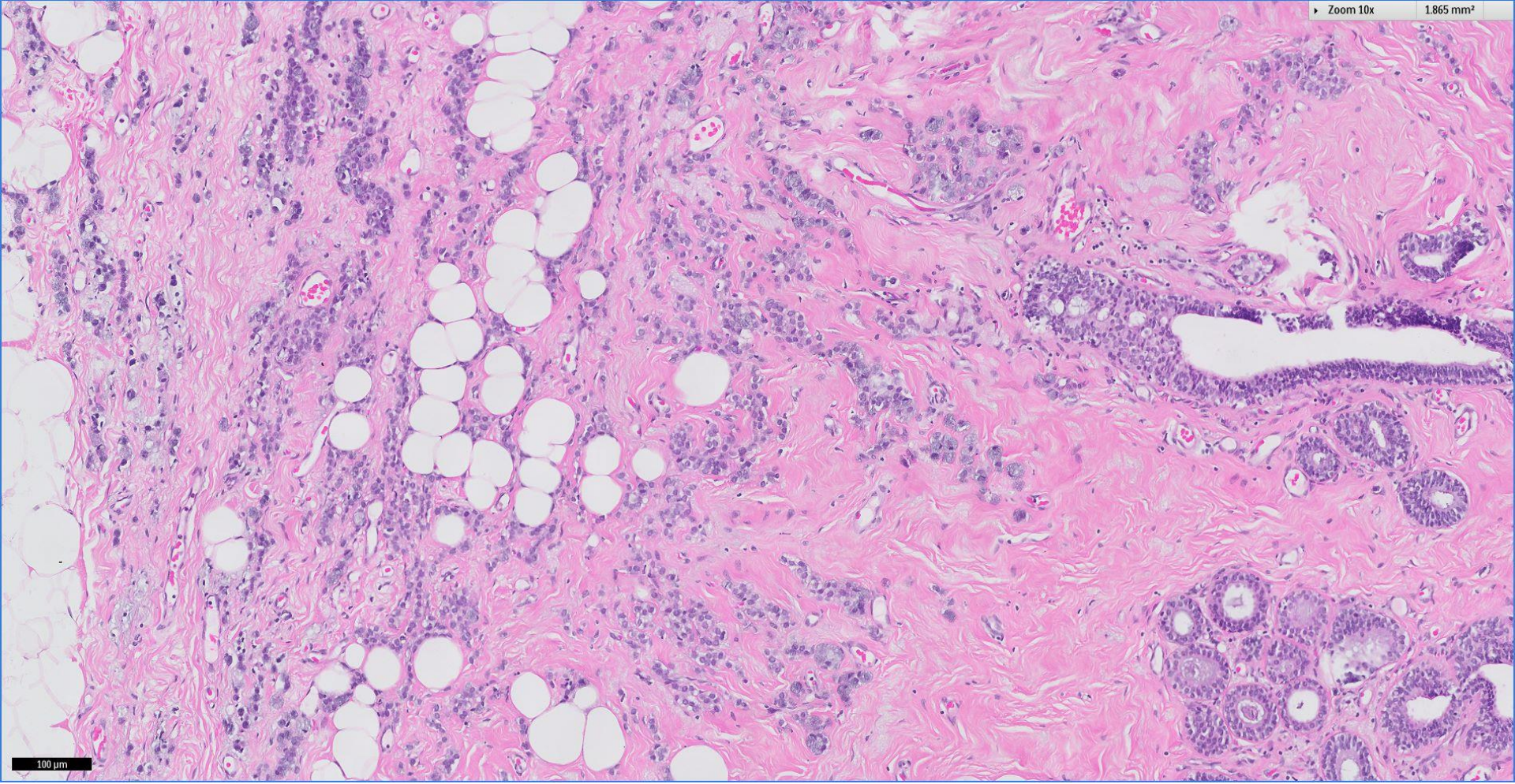
0.466 mm²



50 μm

Zoom 10x

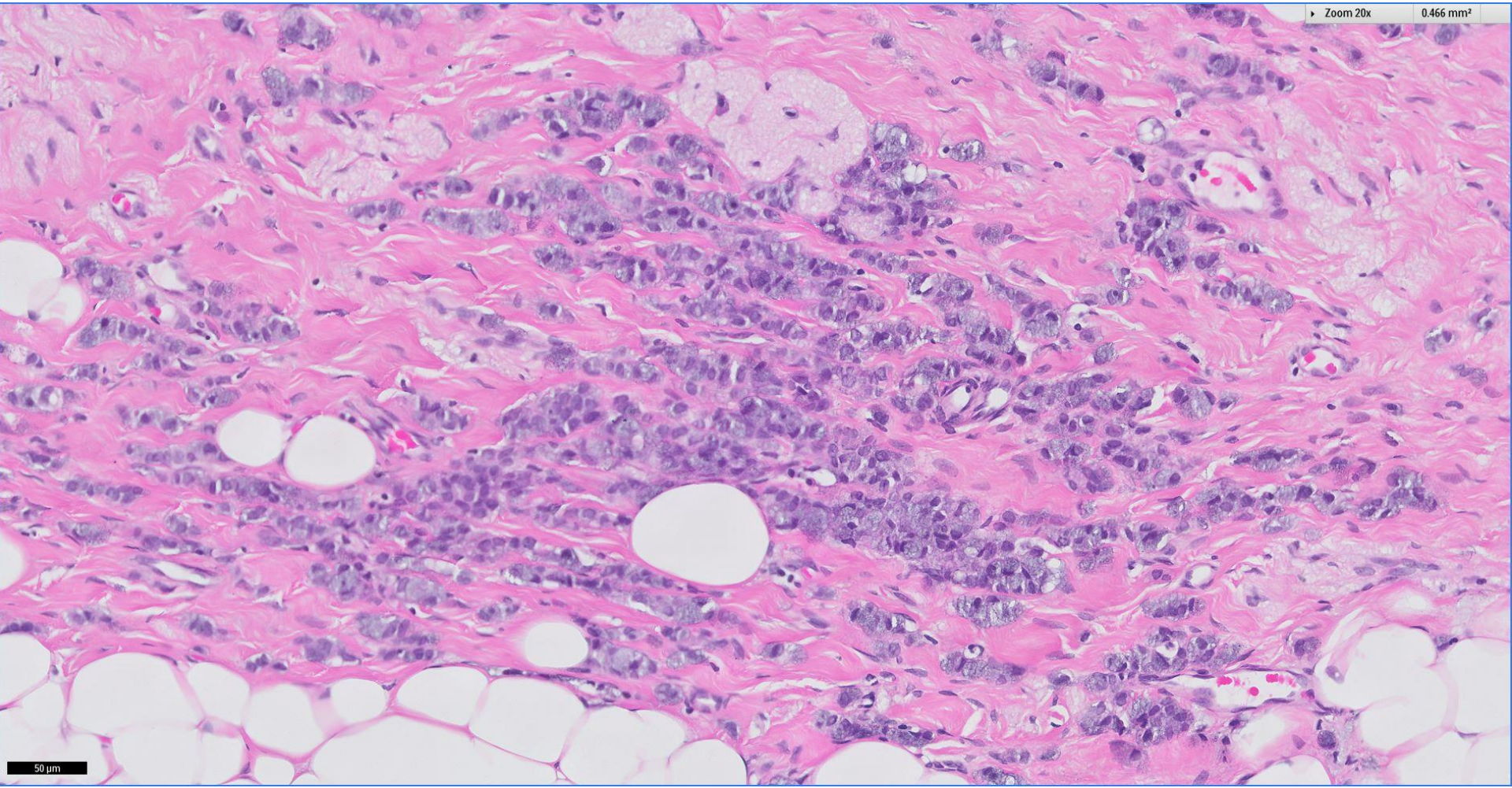
1.865 mm²



100 μ m

Zoom 20x

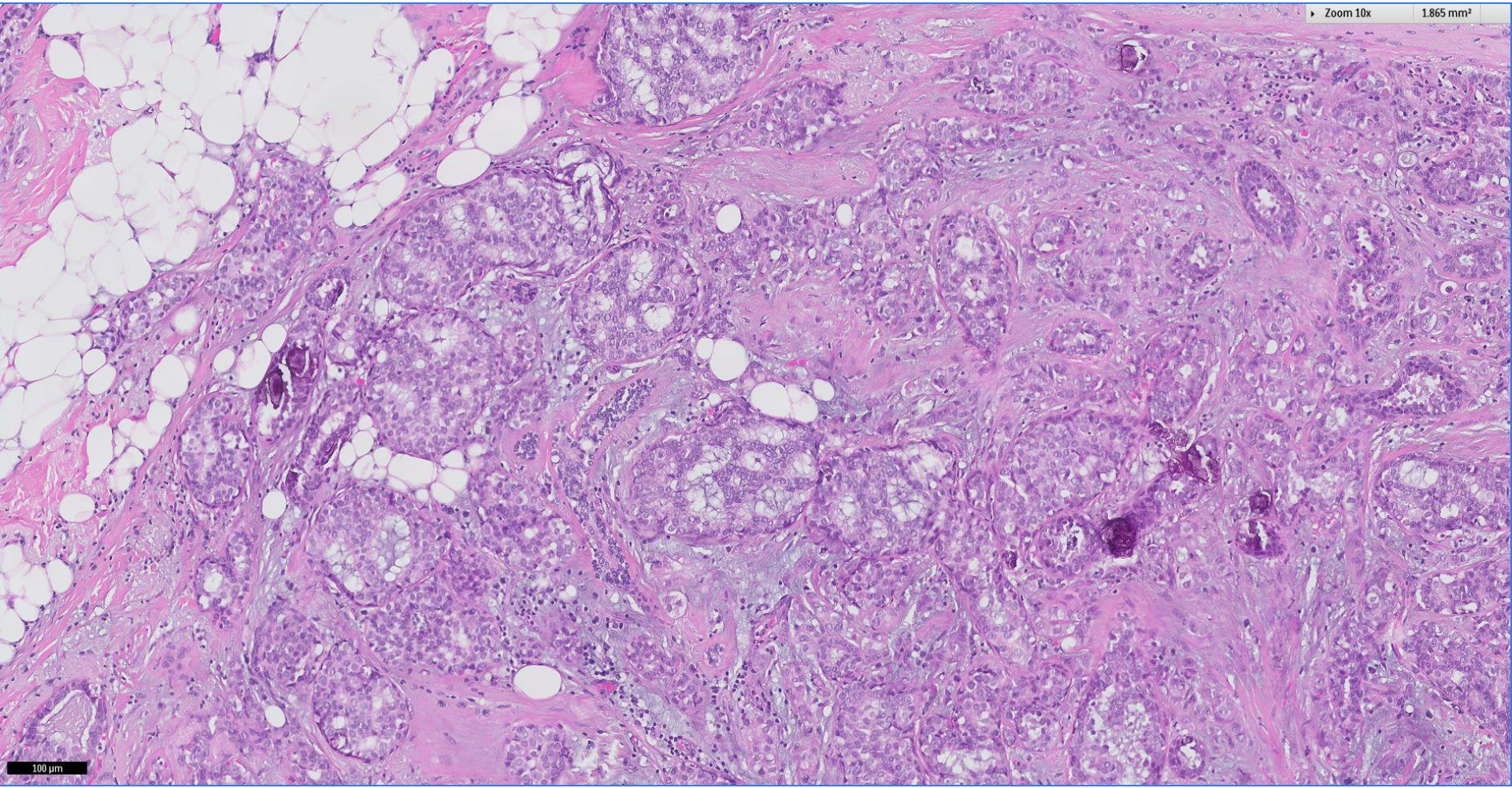
0.466 mm²



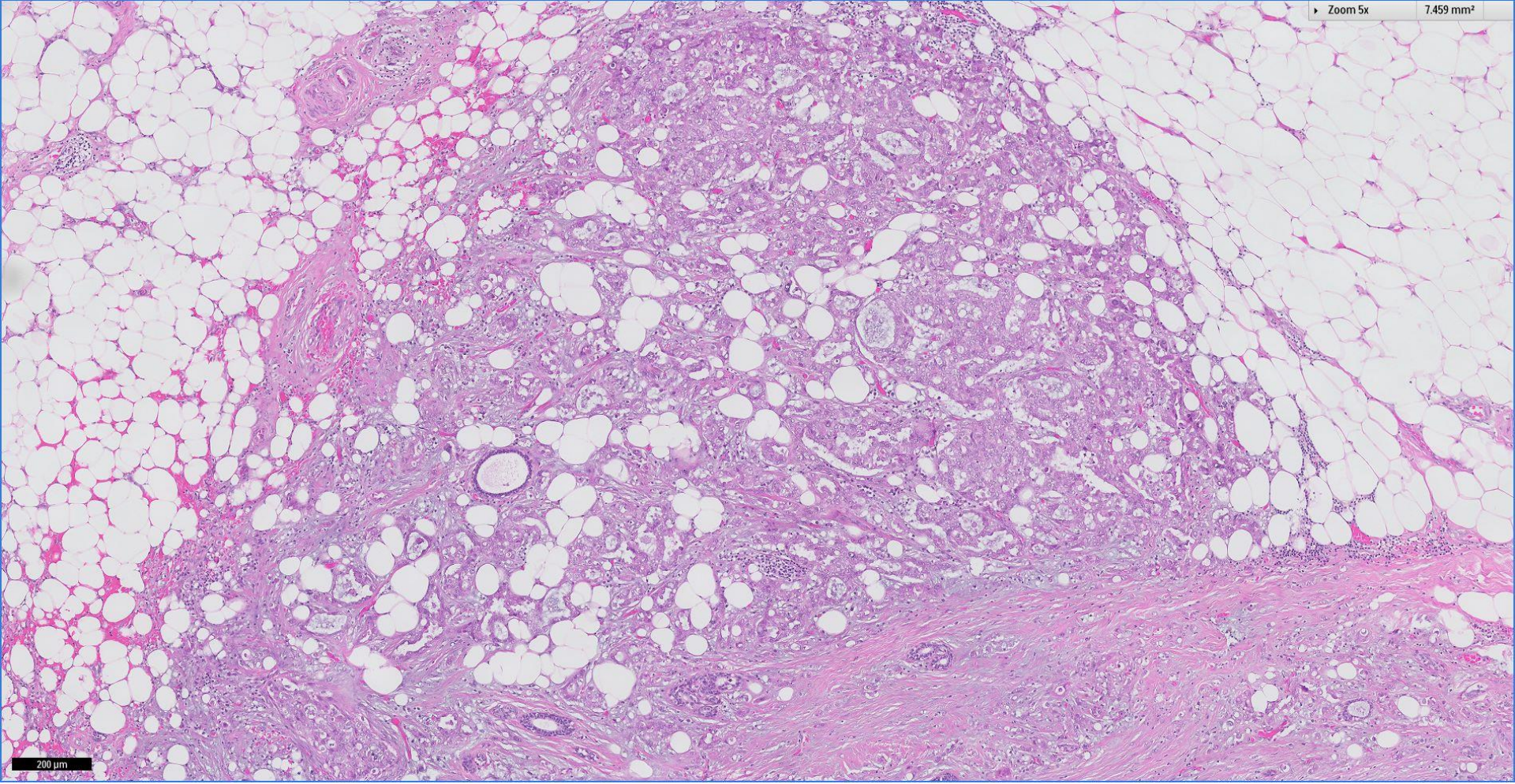
50 μ m

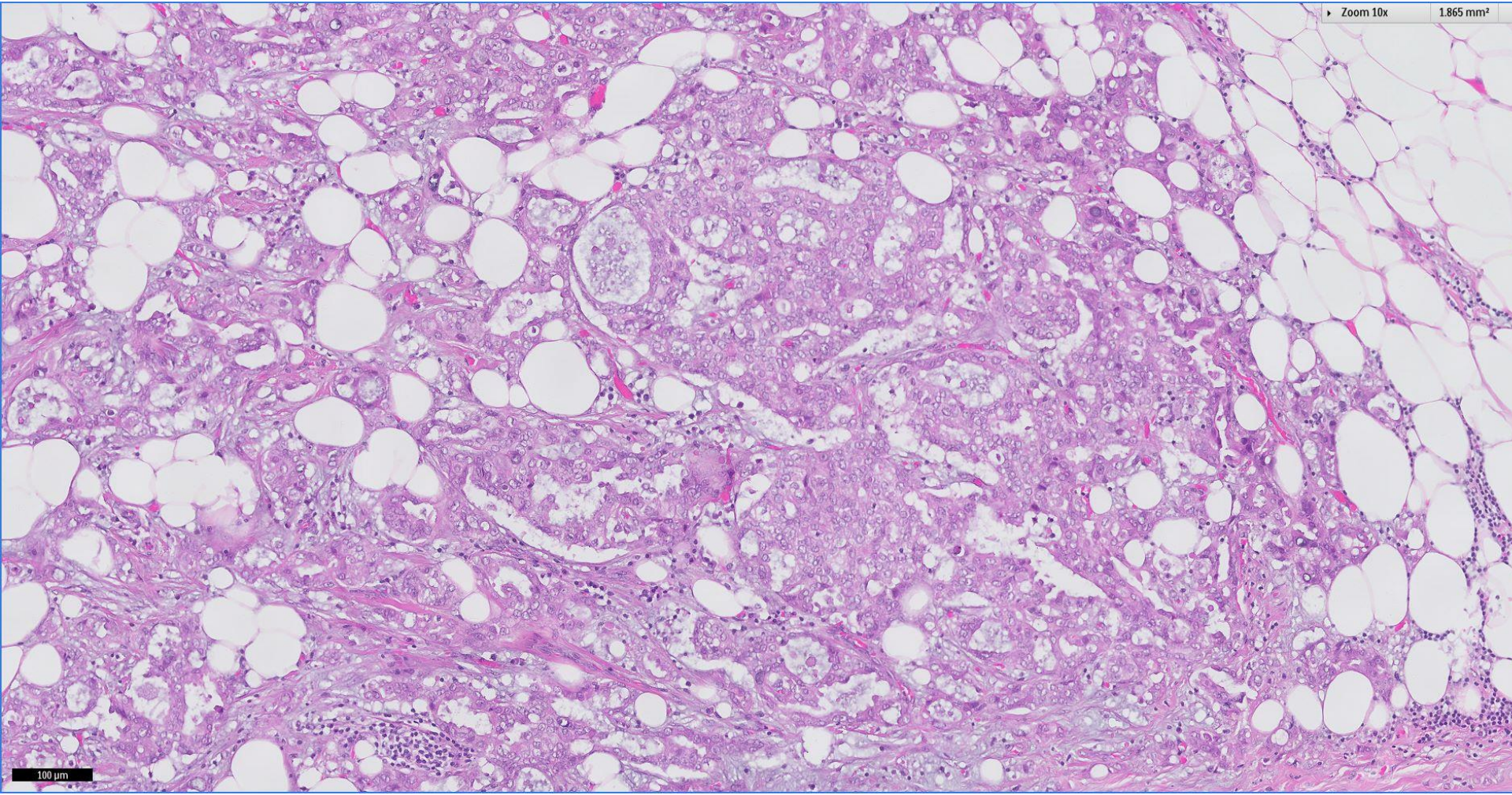
Zoom 10x

1.865 mm²



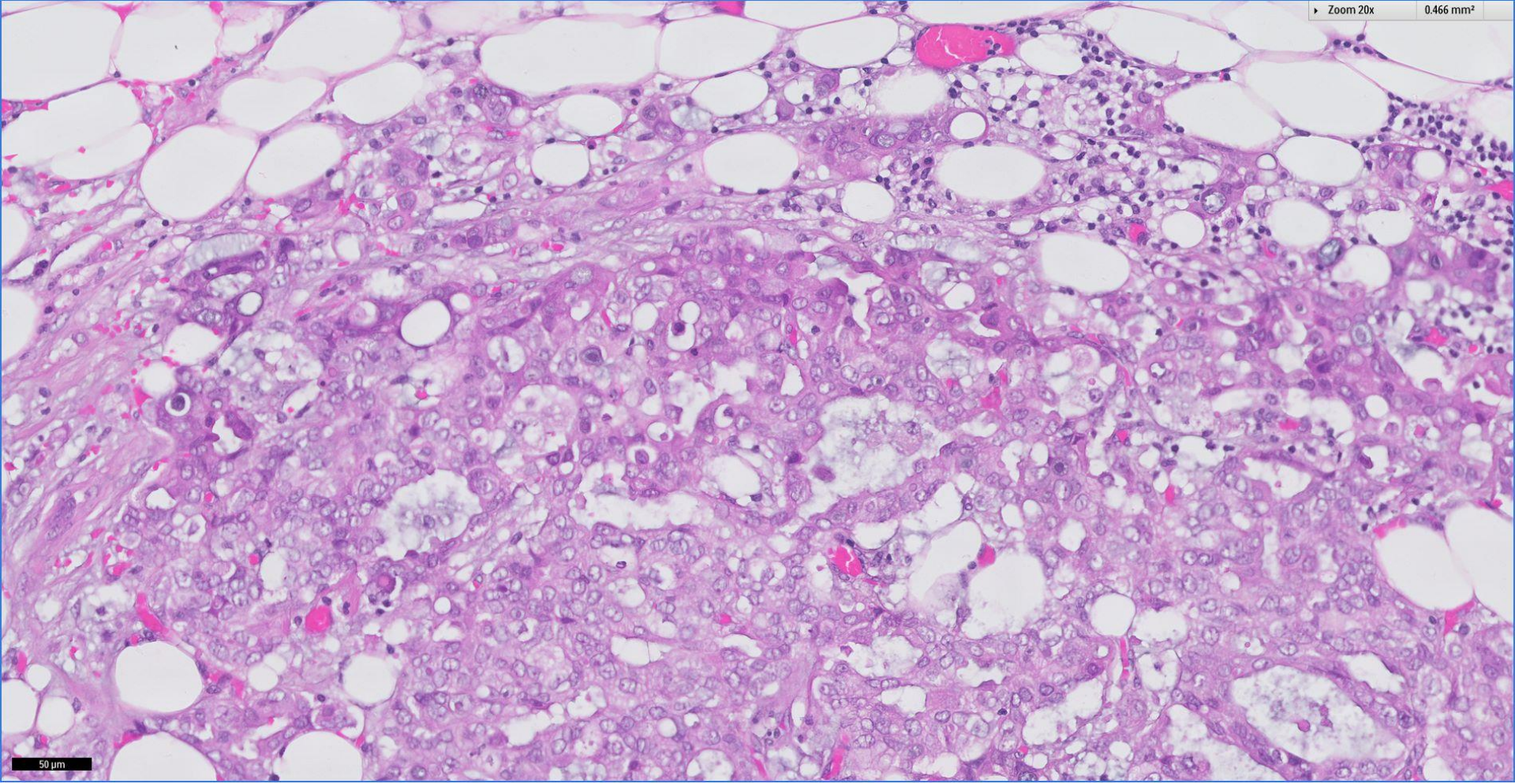
100 μ m





Zoom 20x

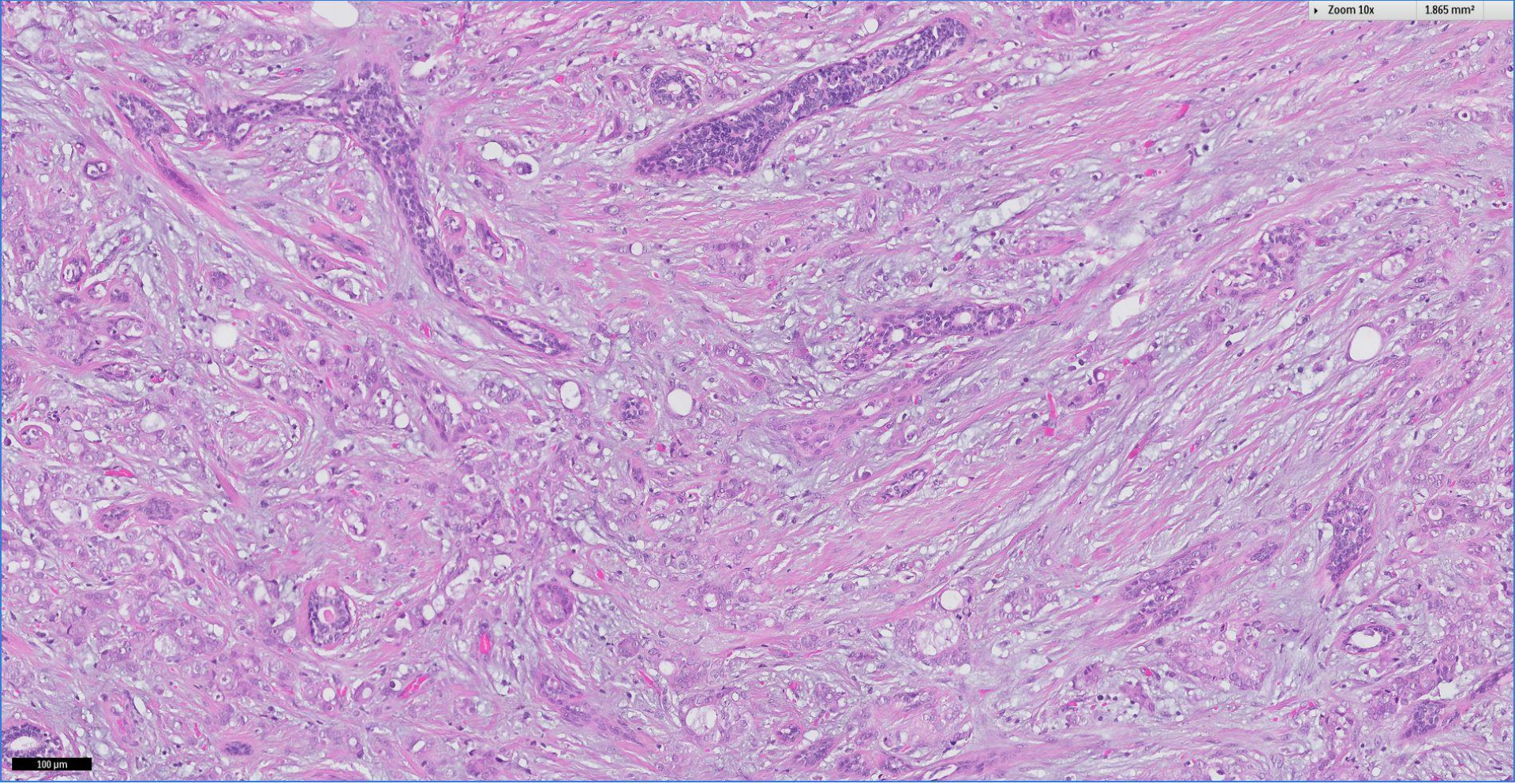
0.466 mm²



50 μ m

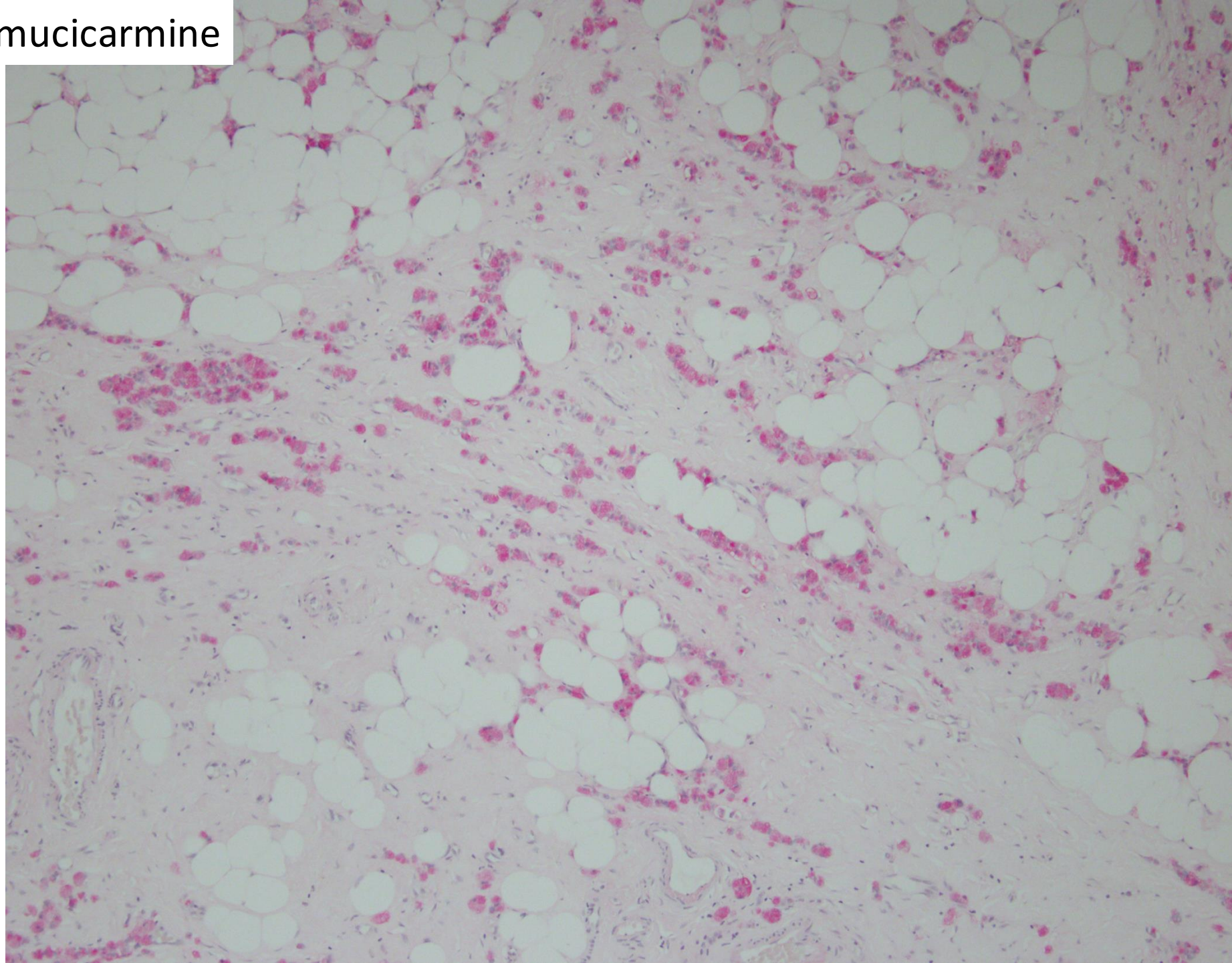
Zoom 10x

1.865 mm²

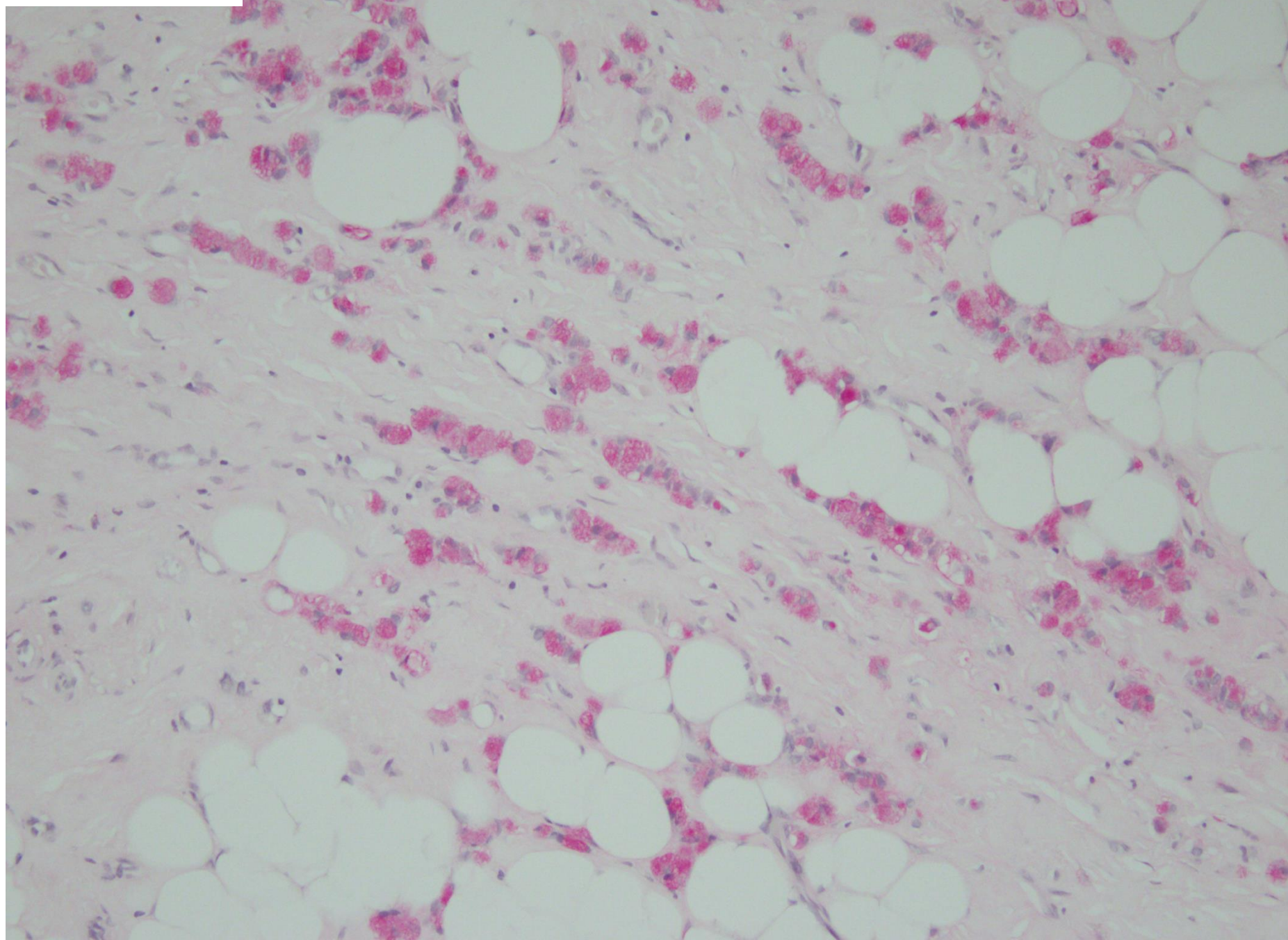


100 μm

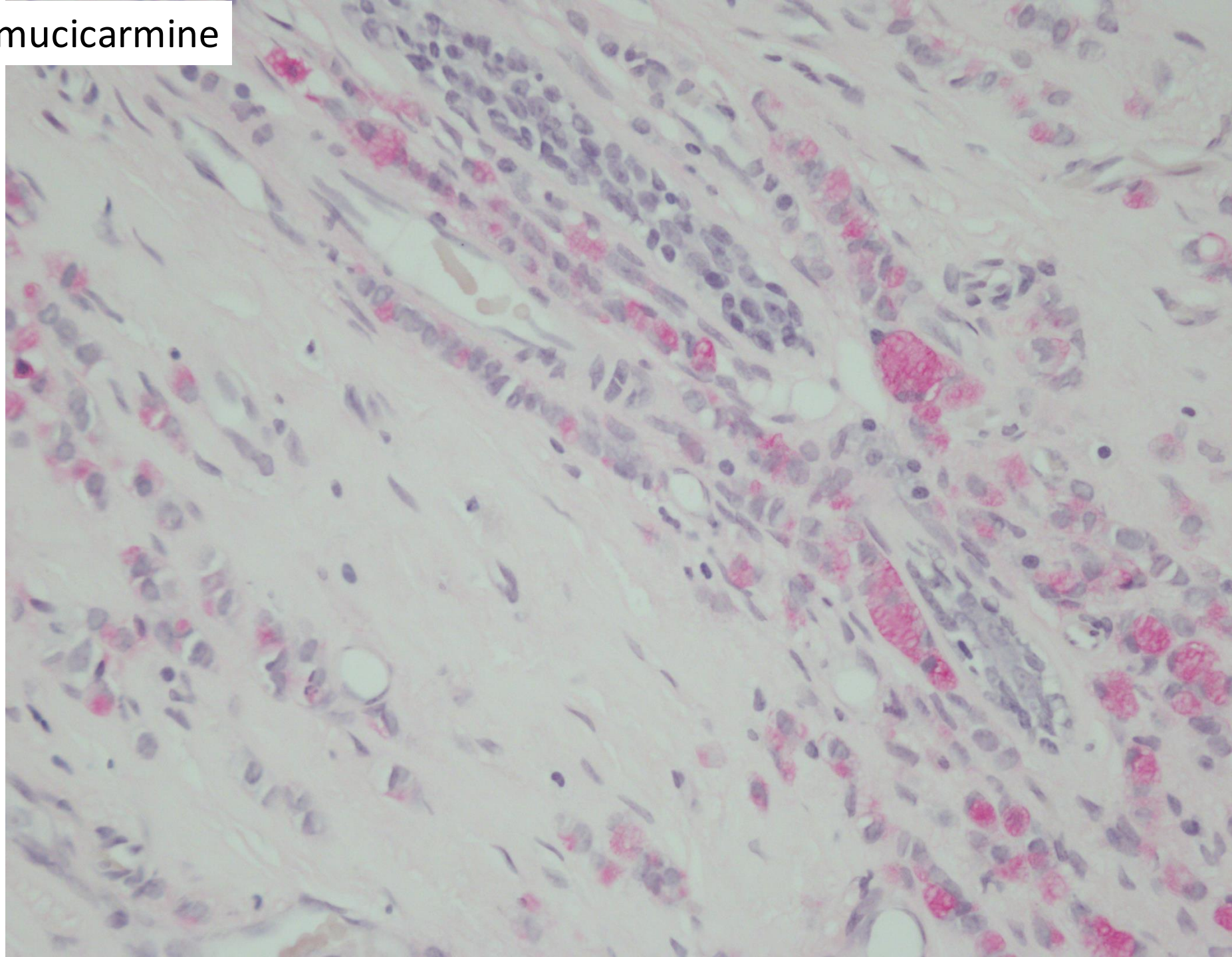
mucicarmine



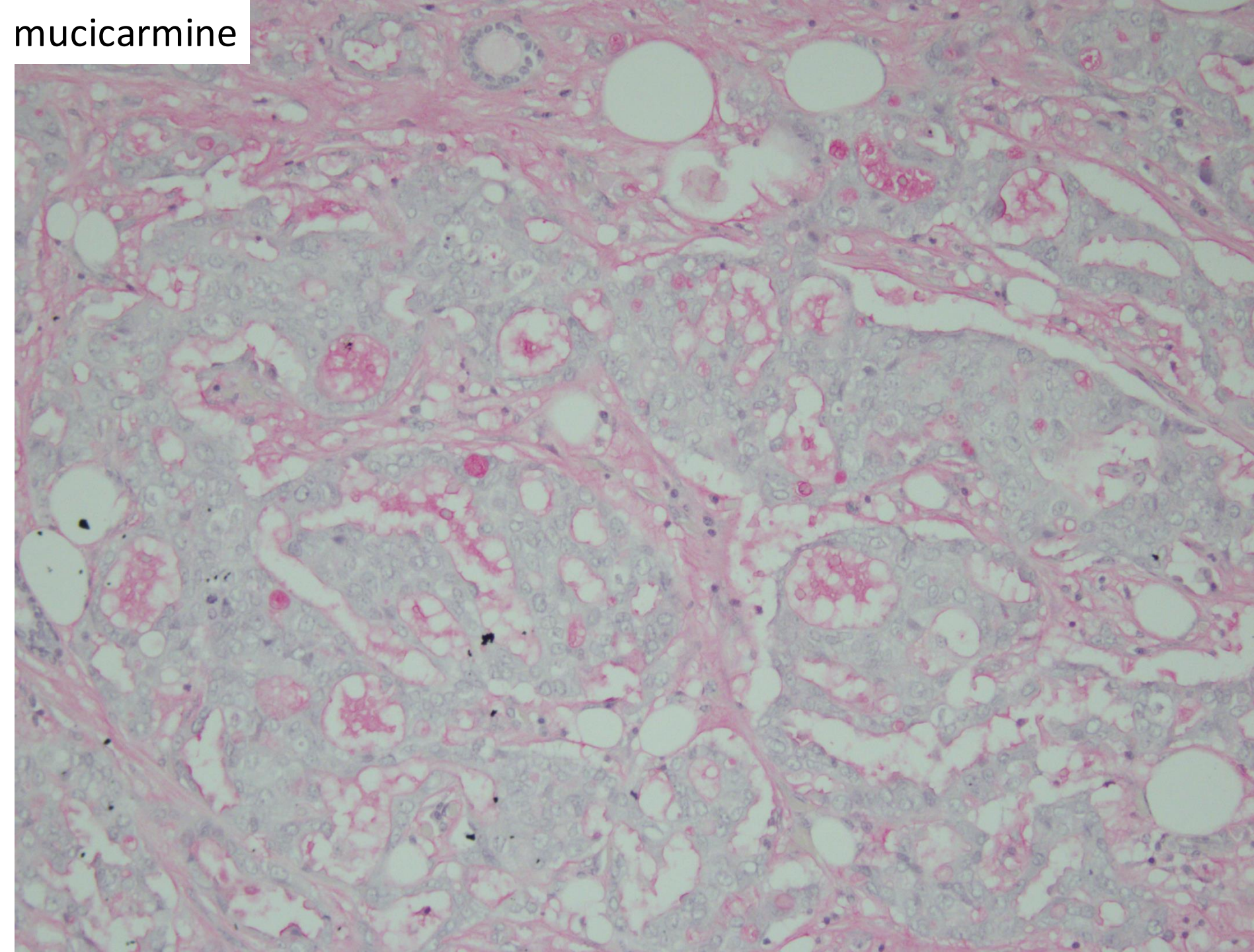
mucicarmine

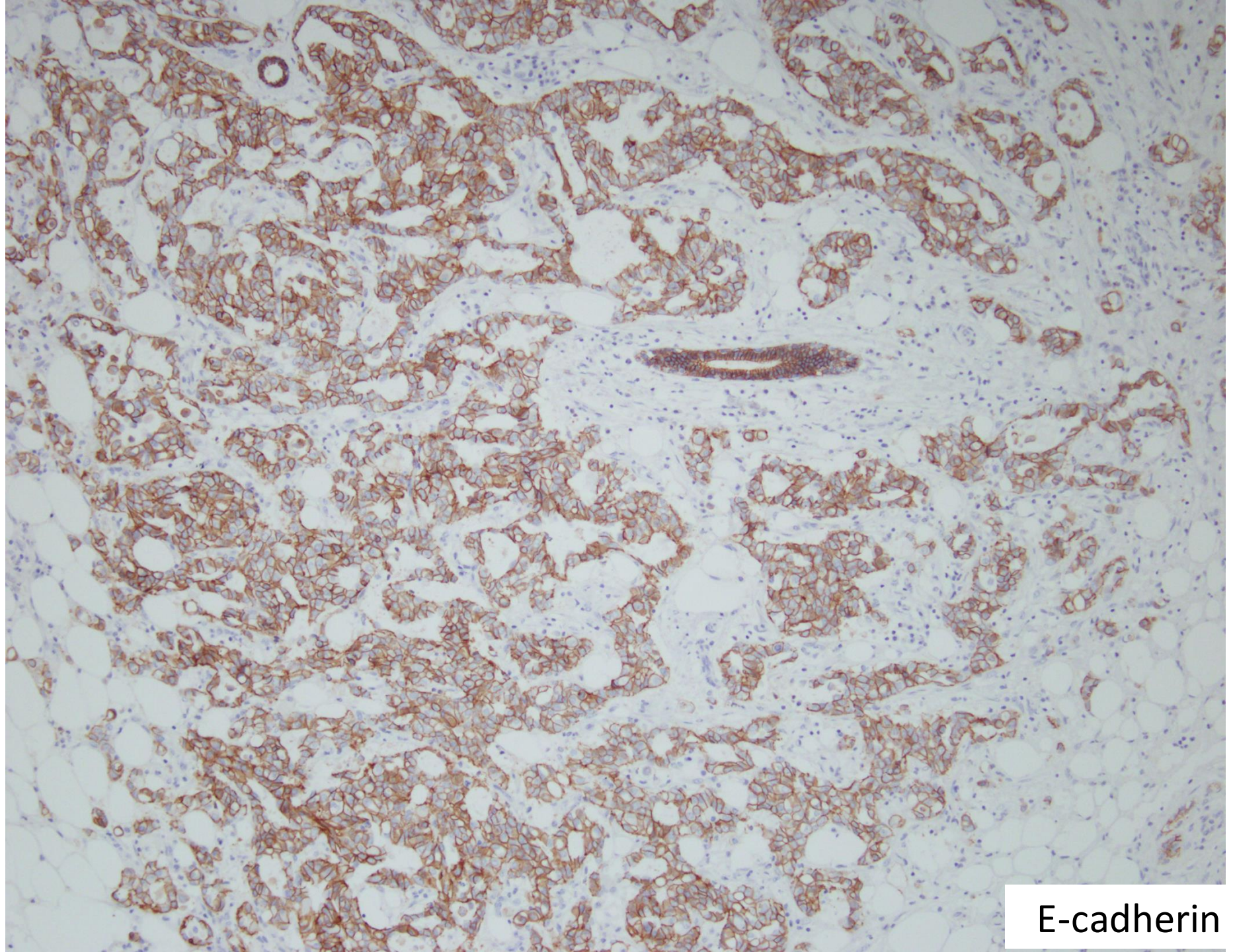


mucicarmine

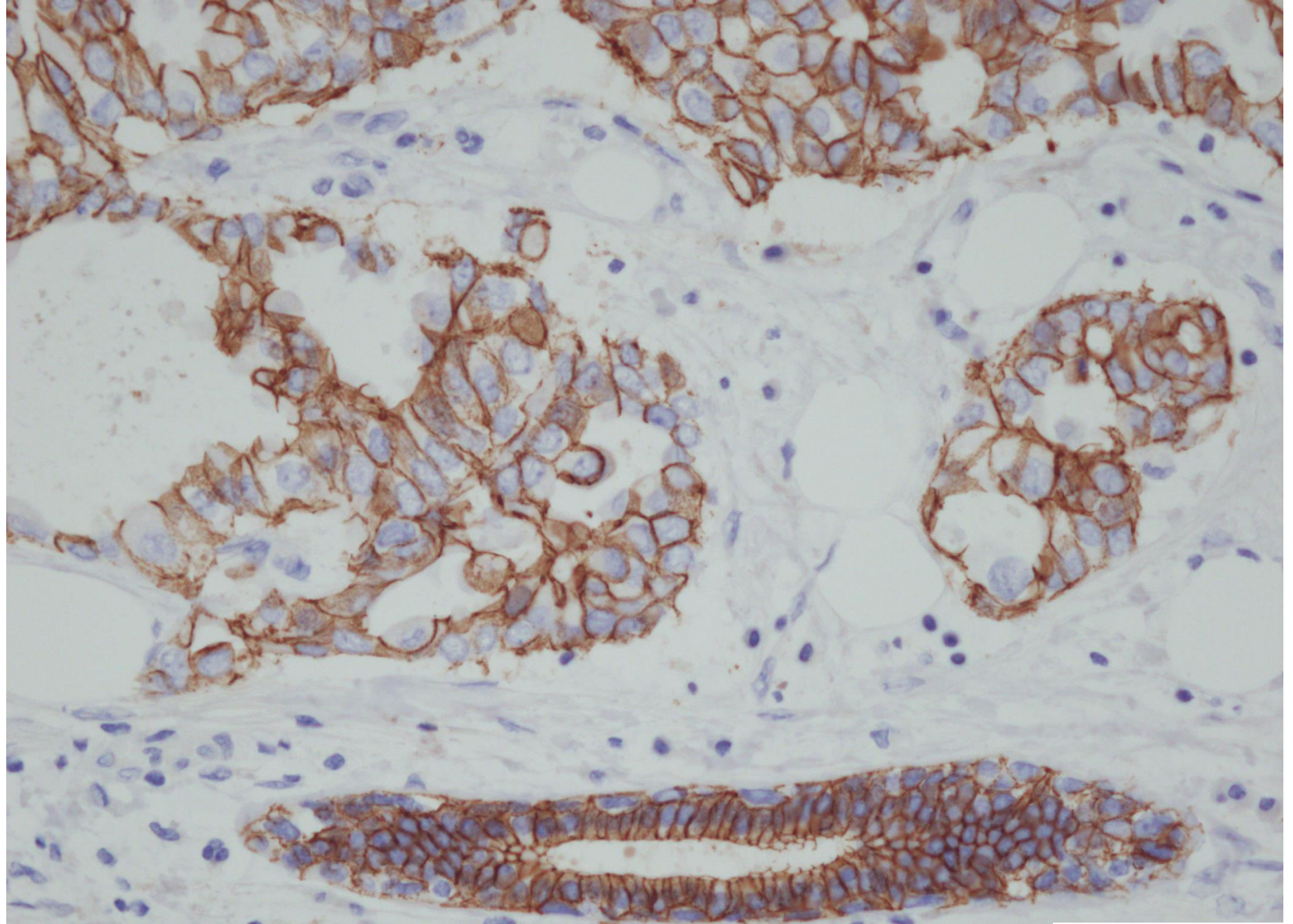


mucicarmine

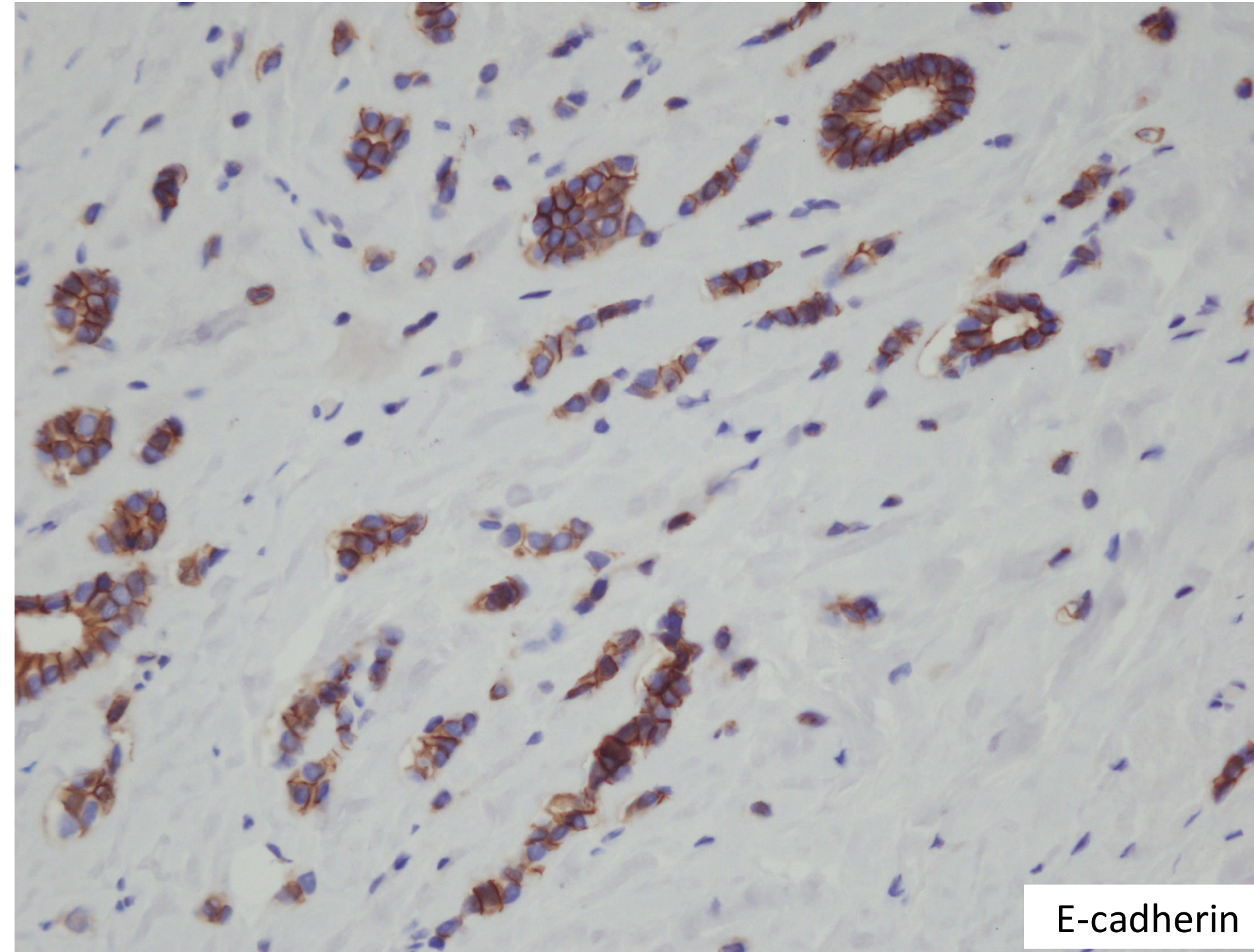




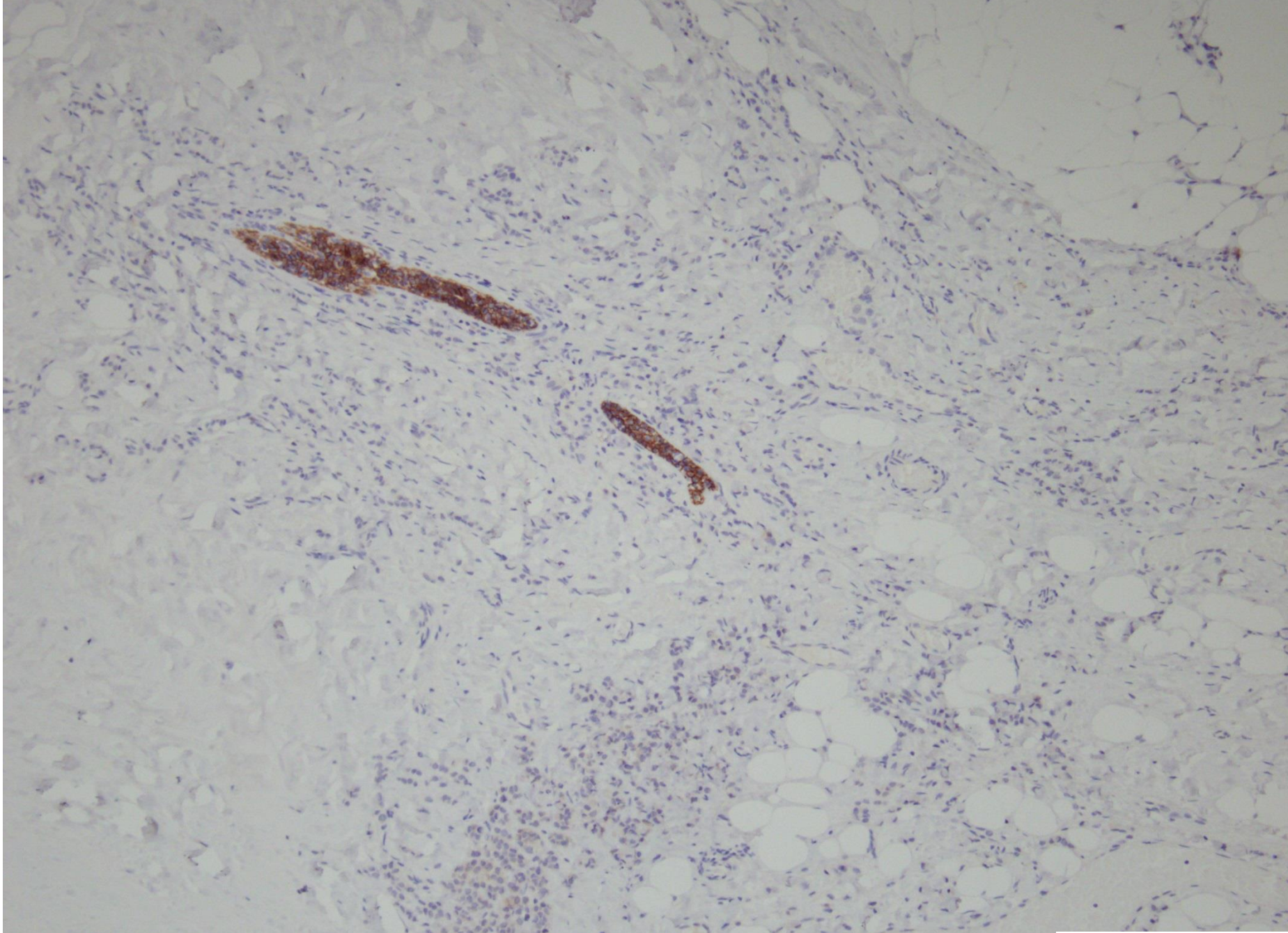
E-cadherin



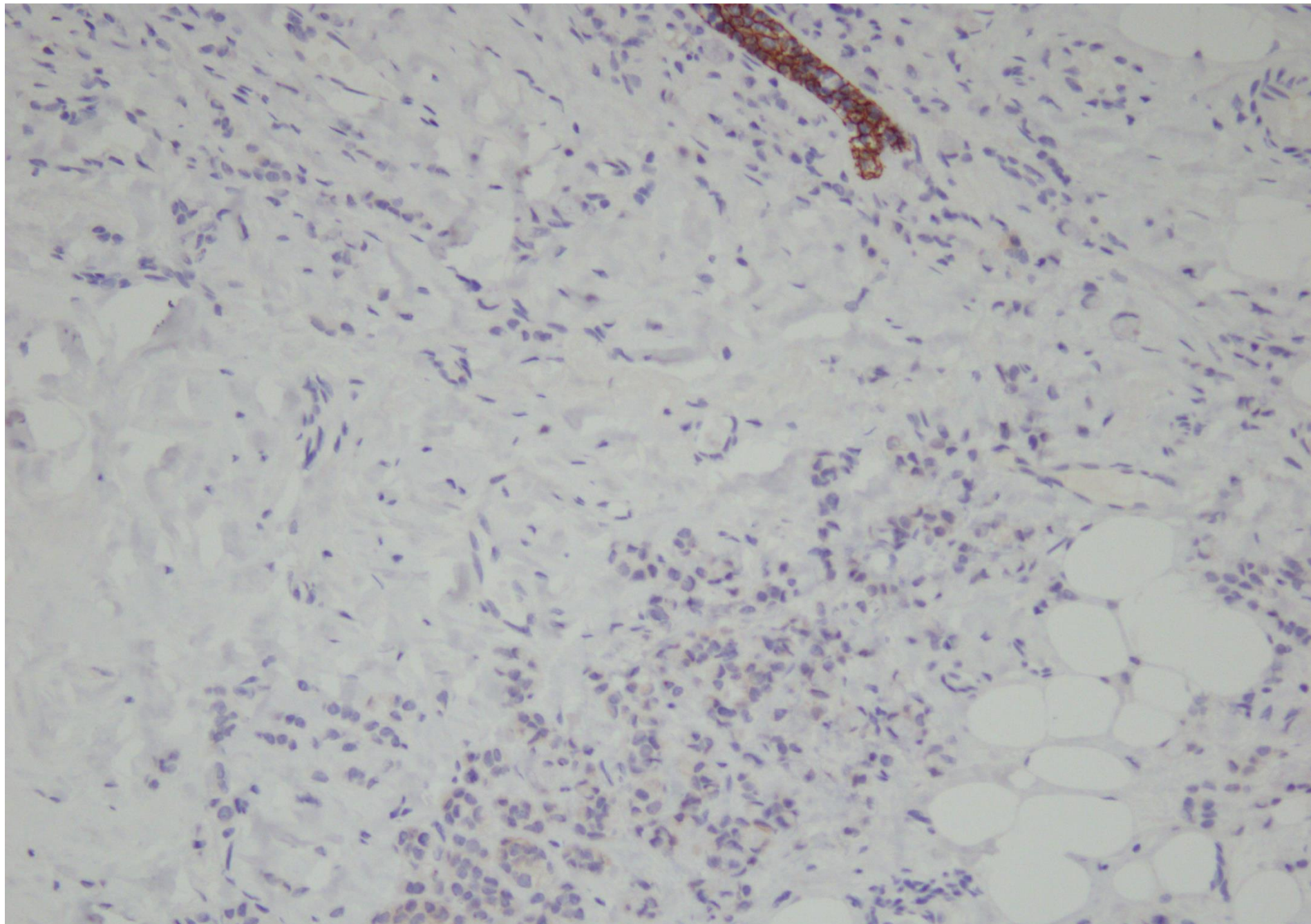
E-cadherin



E-cadherin



E-cadherin



E-cadherin

Right breast wide excision:

*Invasive carcinoma with mixed
ductal-lobular features*



Invasive carcinoma with mixed ductal-lobular features

- Accounts for about 5% to 10% of all invasive breast cancers.



 Breast
Pathology
Course 2014

