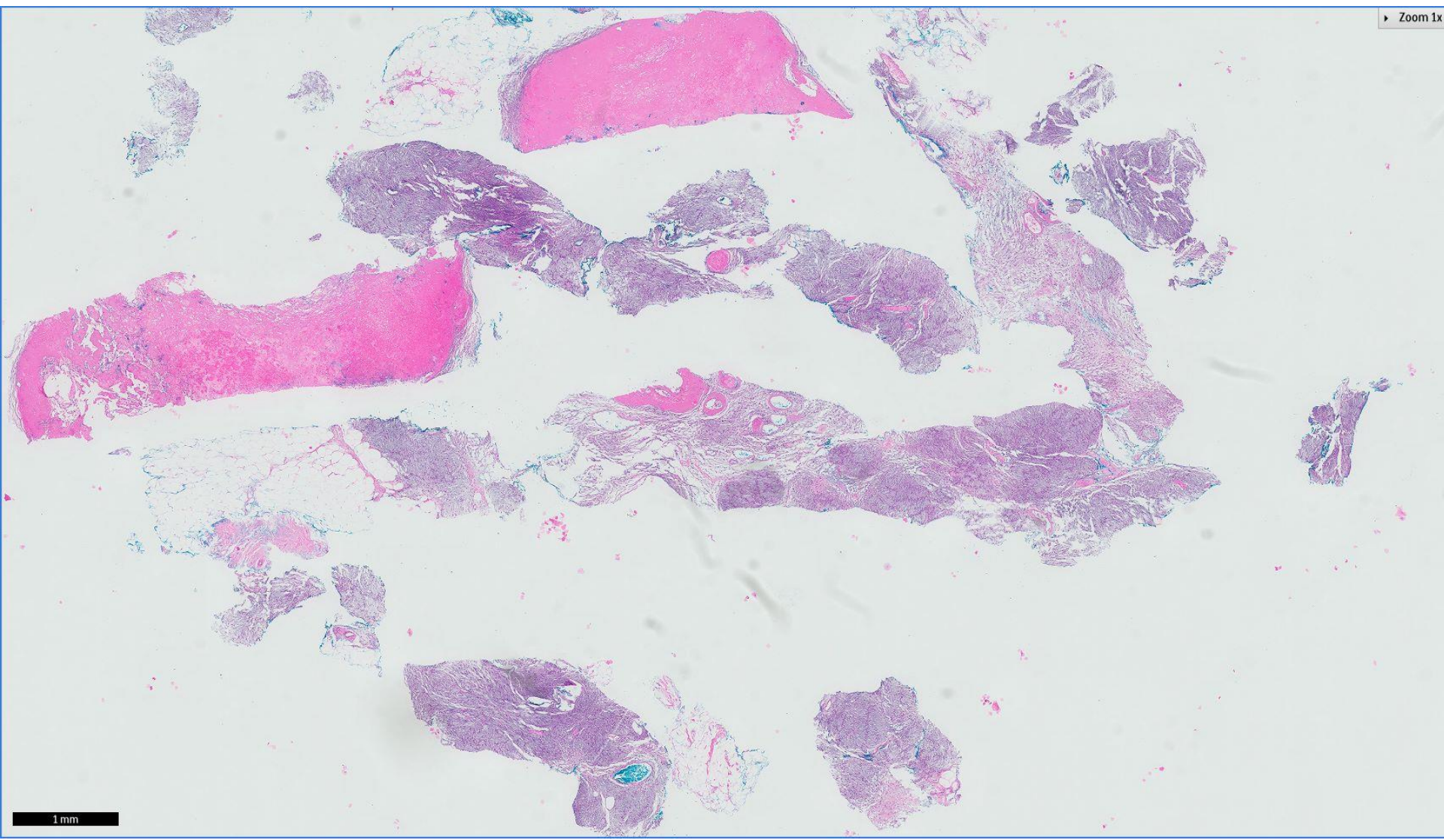


Case 22

71 year old man with a right breast lump.
Core biopsies performed.

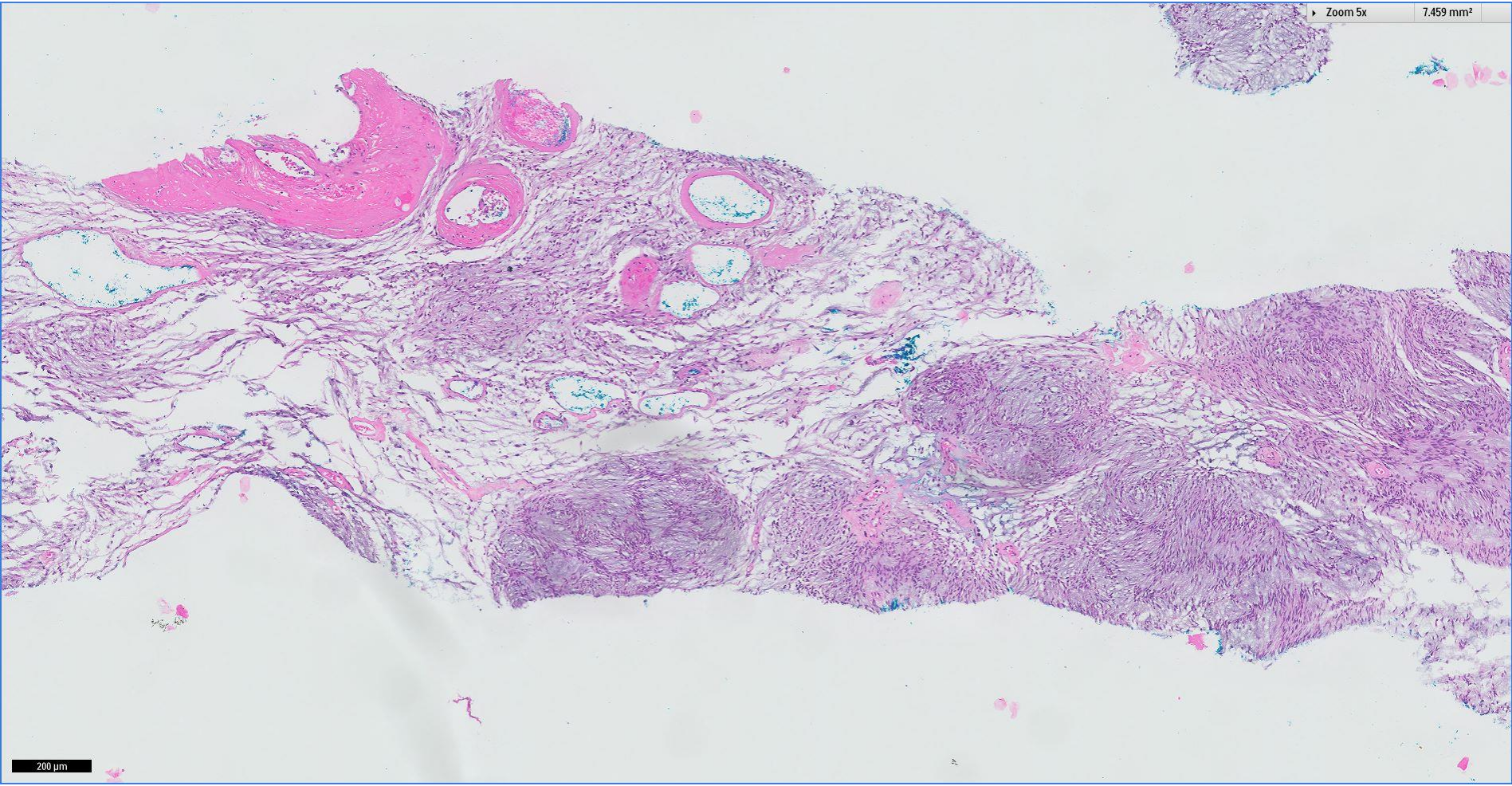




1 mm

Zoom 5x

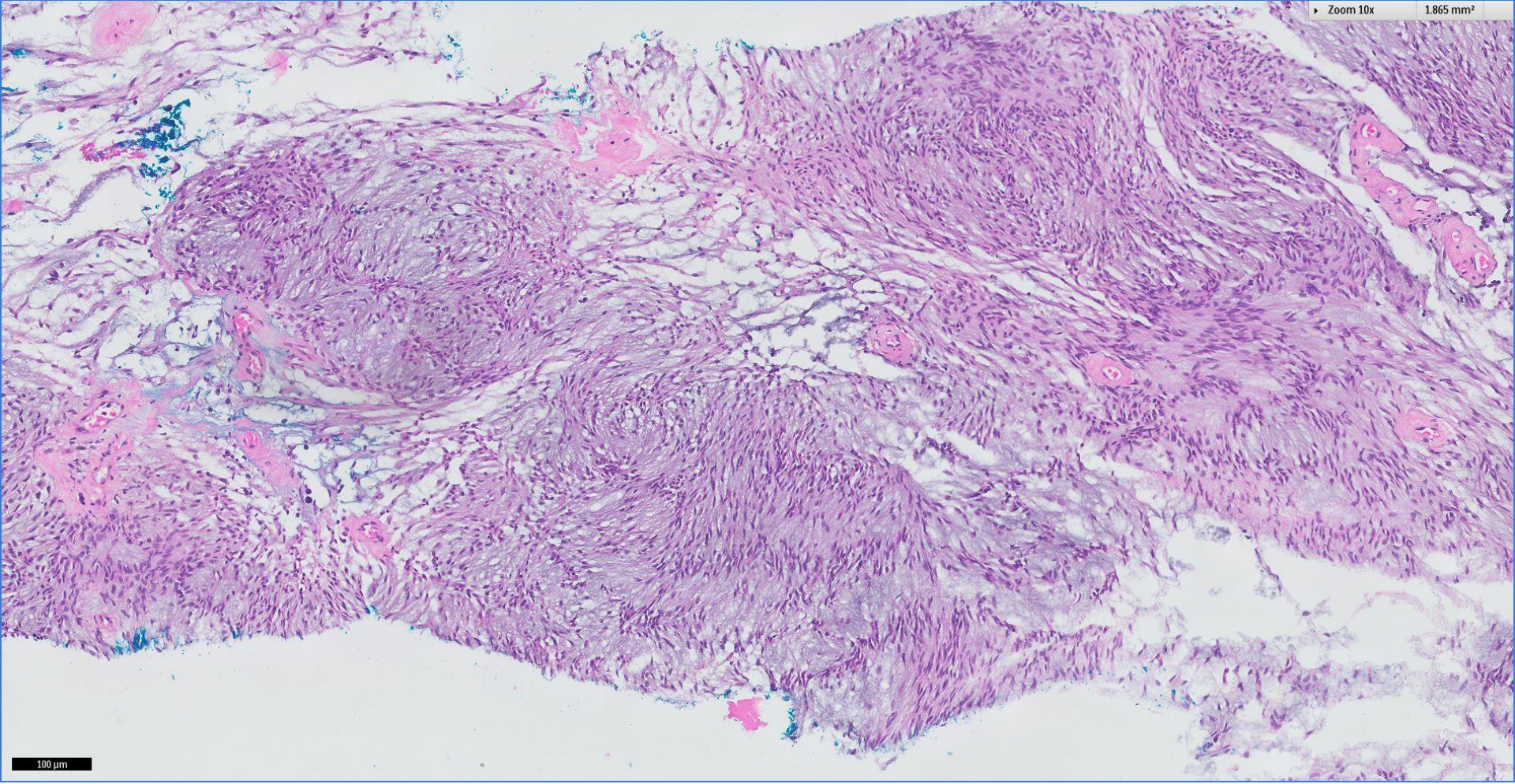
7.459 mm²



200 μm

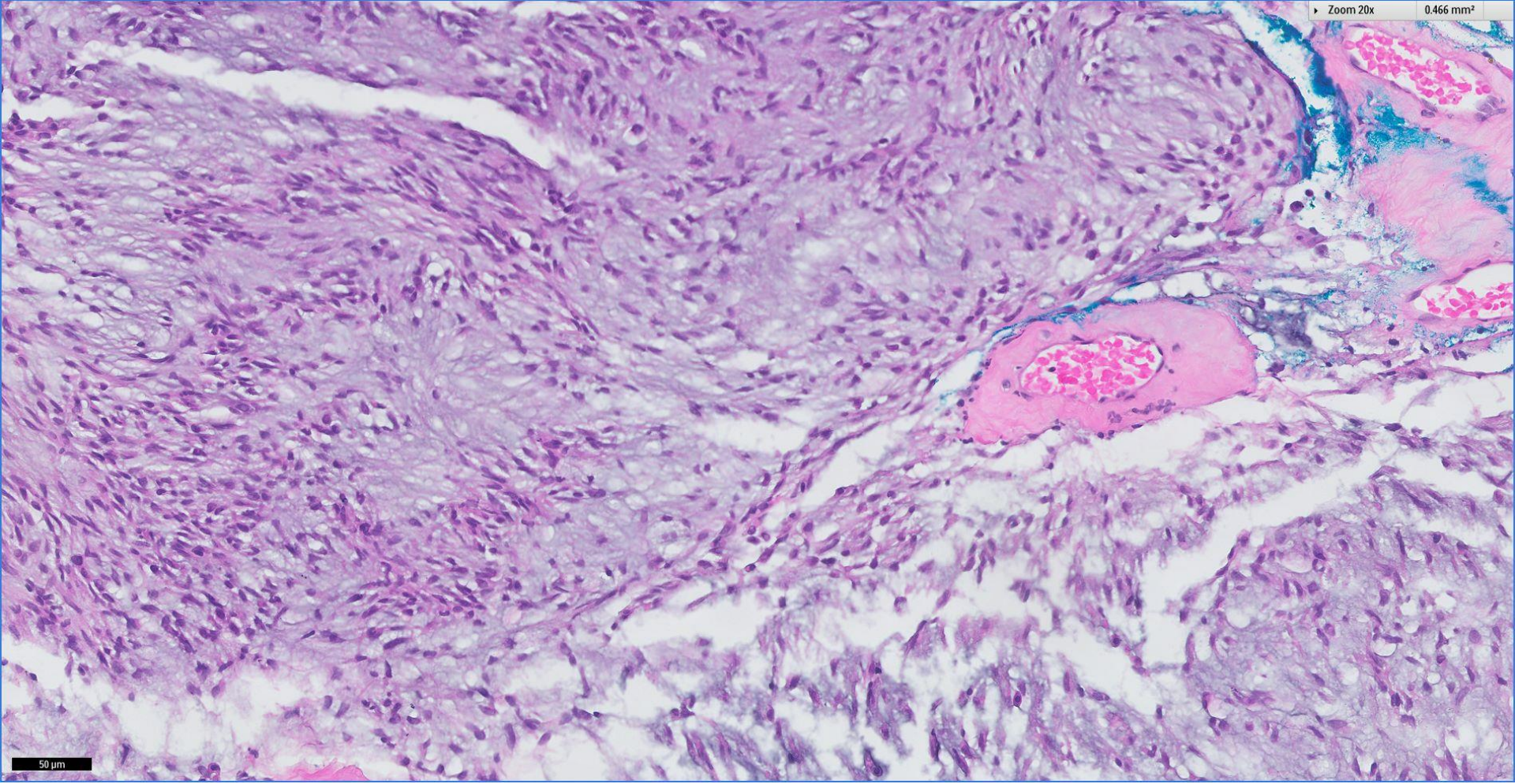
Zoom 10x

1.865 mm²



100 μm

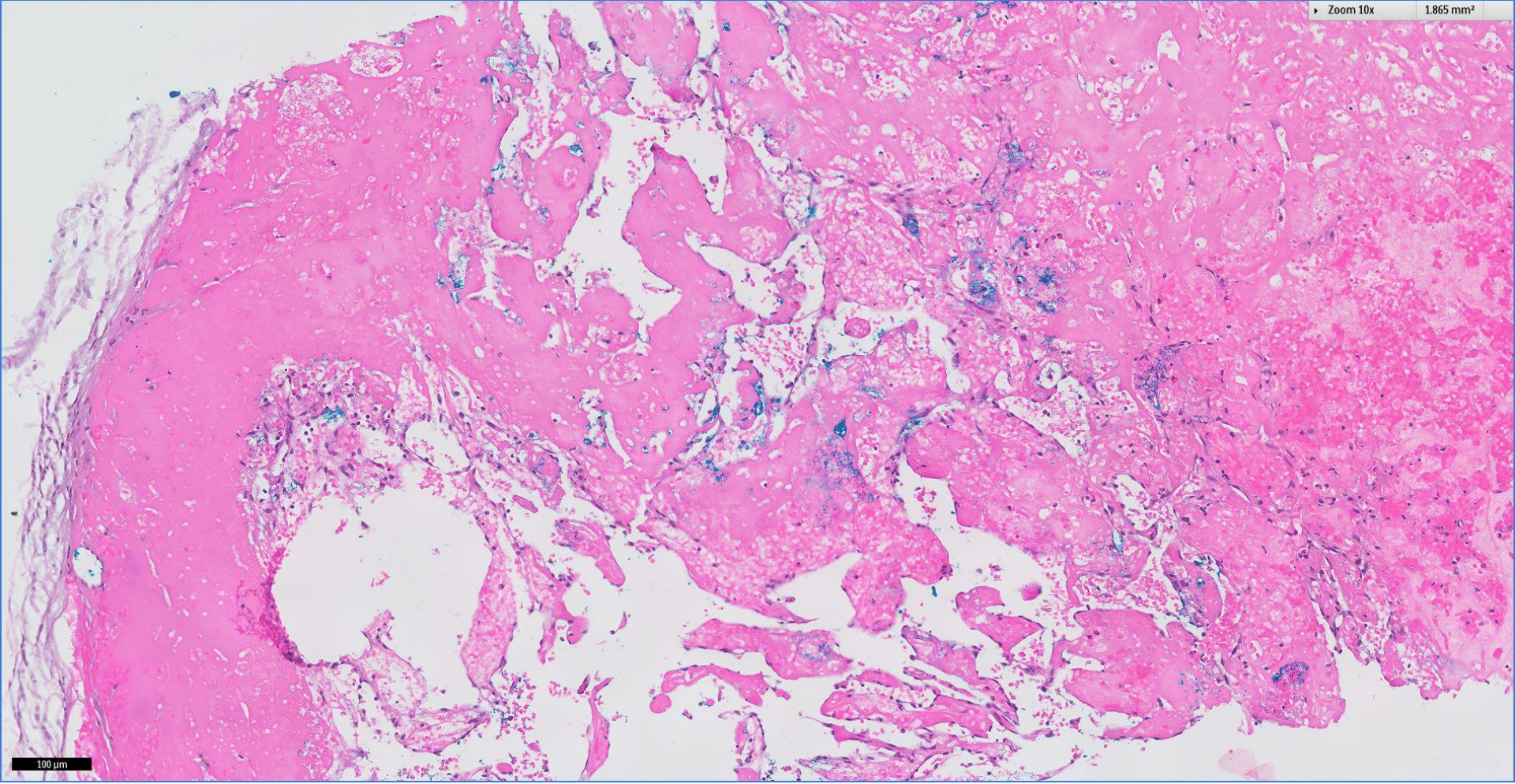
Zoom 20x 0.466 mm²



50 μm

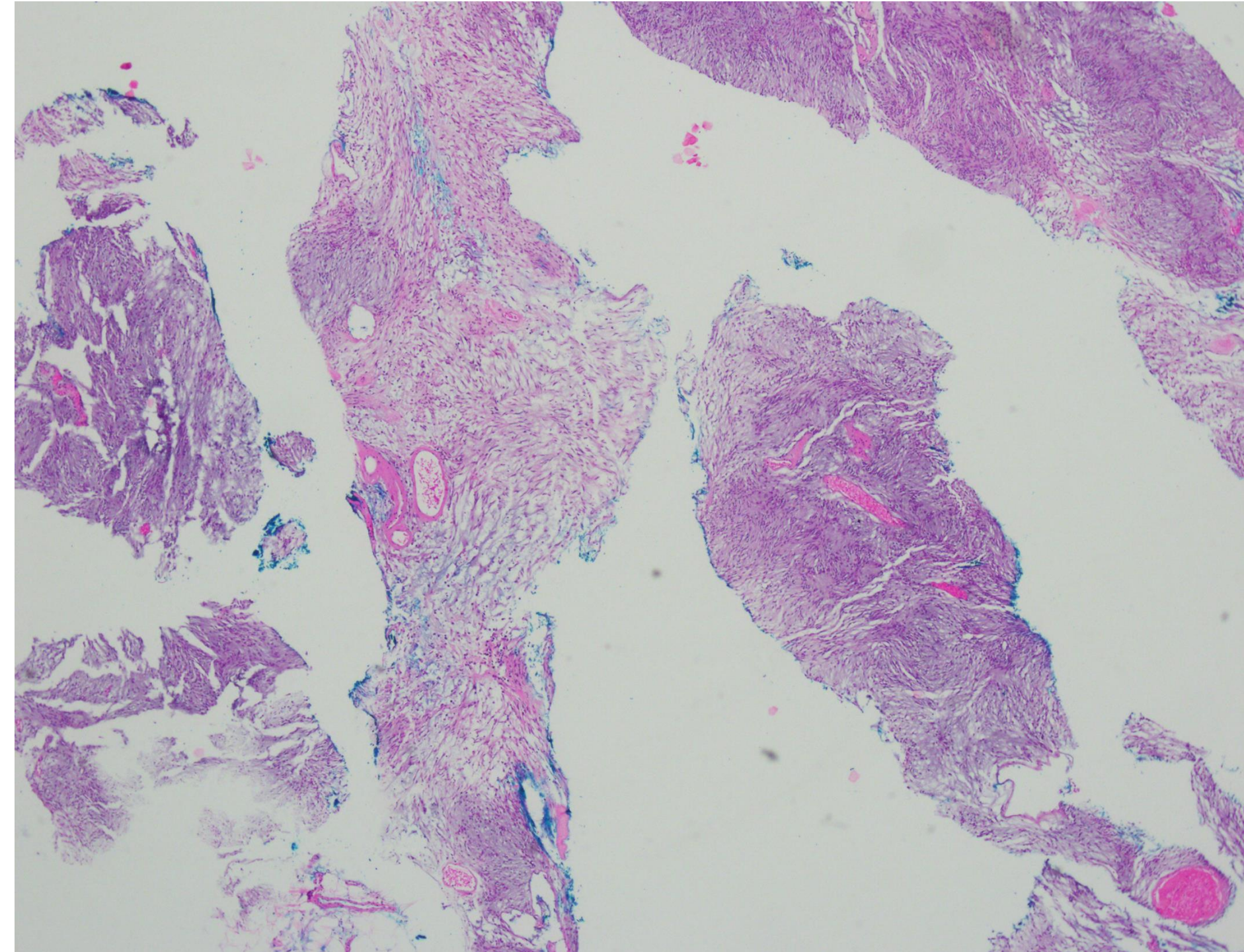
Zoom 10x

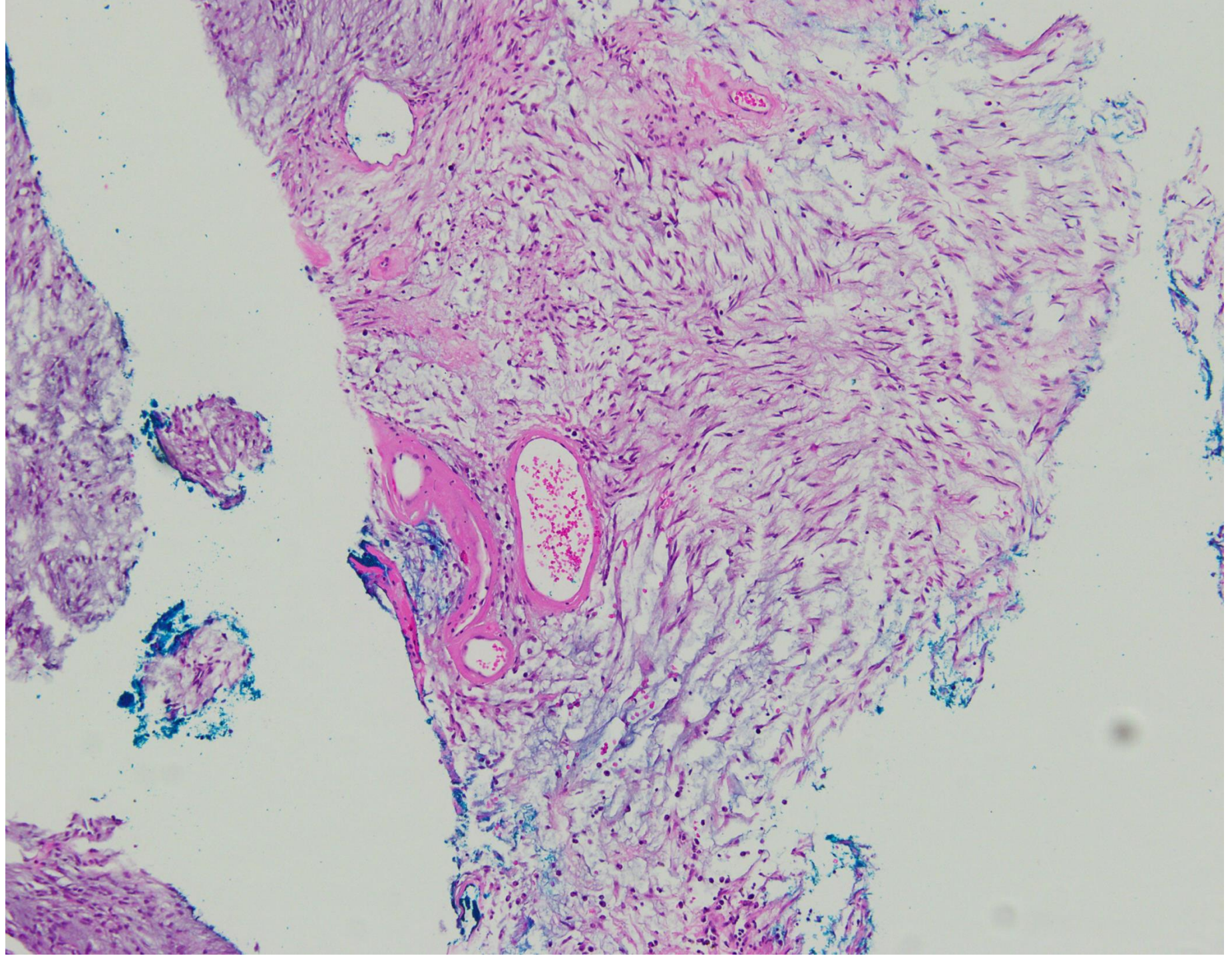
1.865 mm²

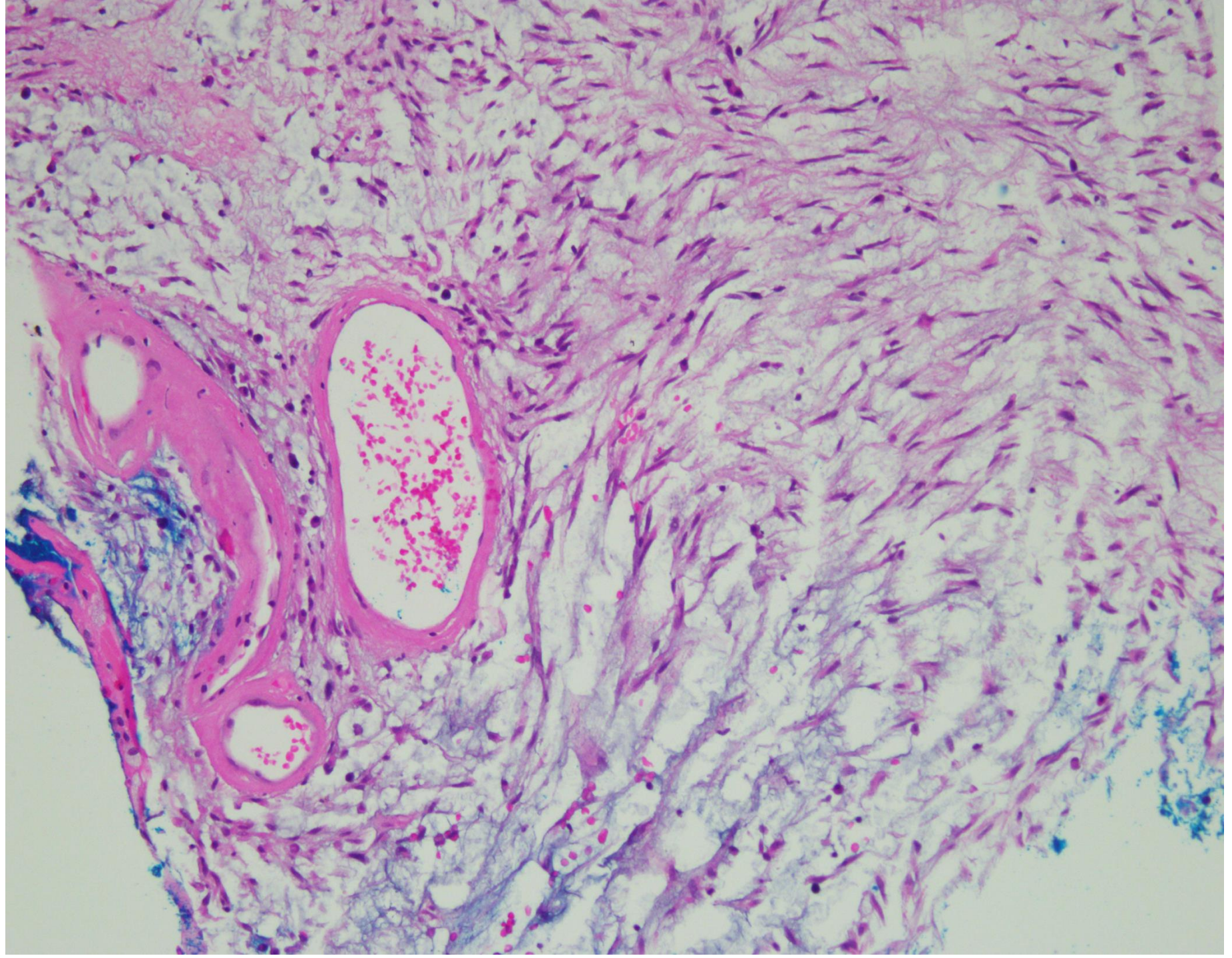


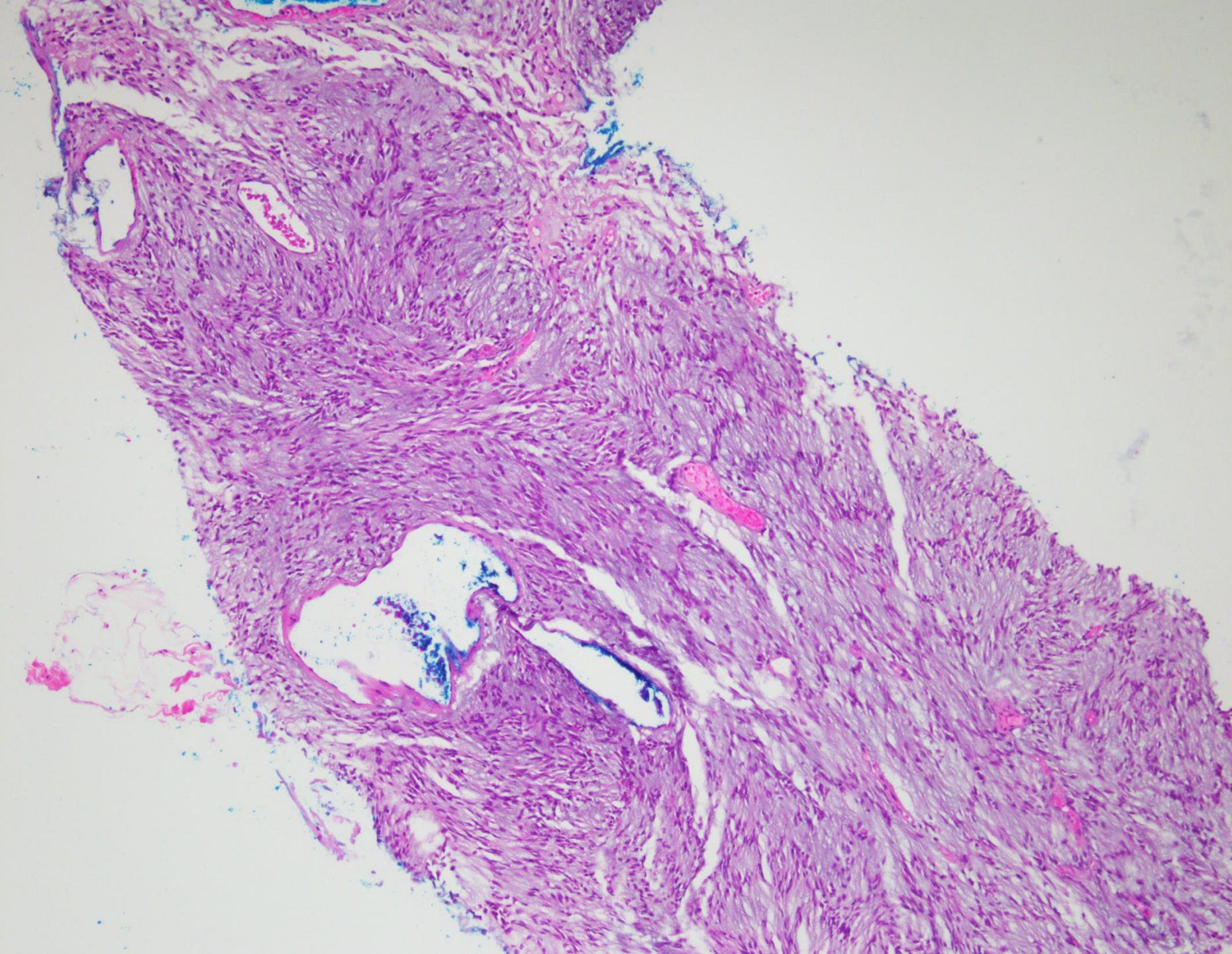
100 μm

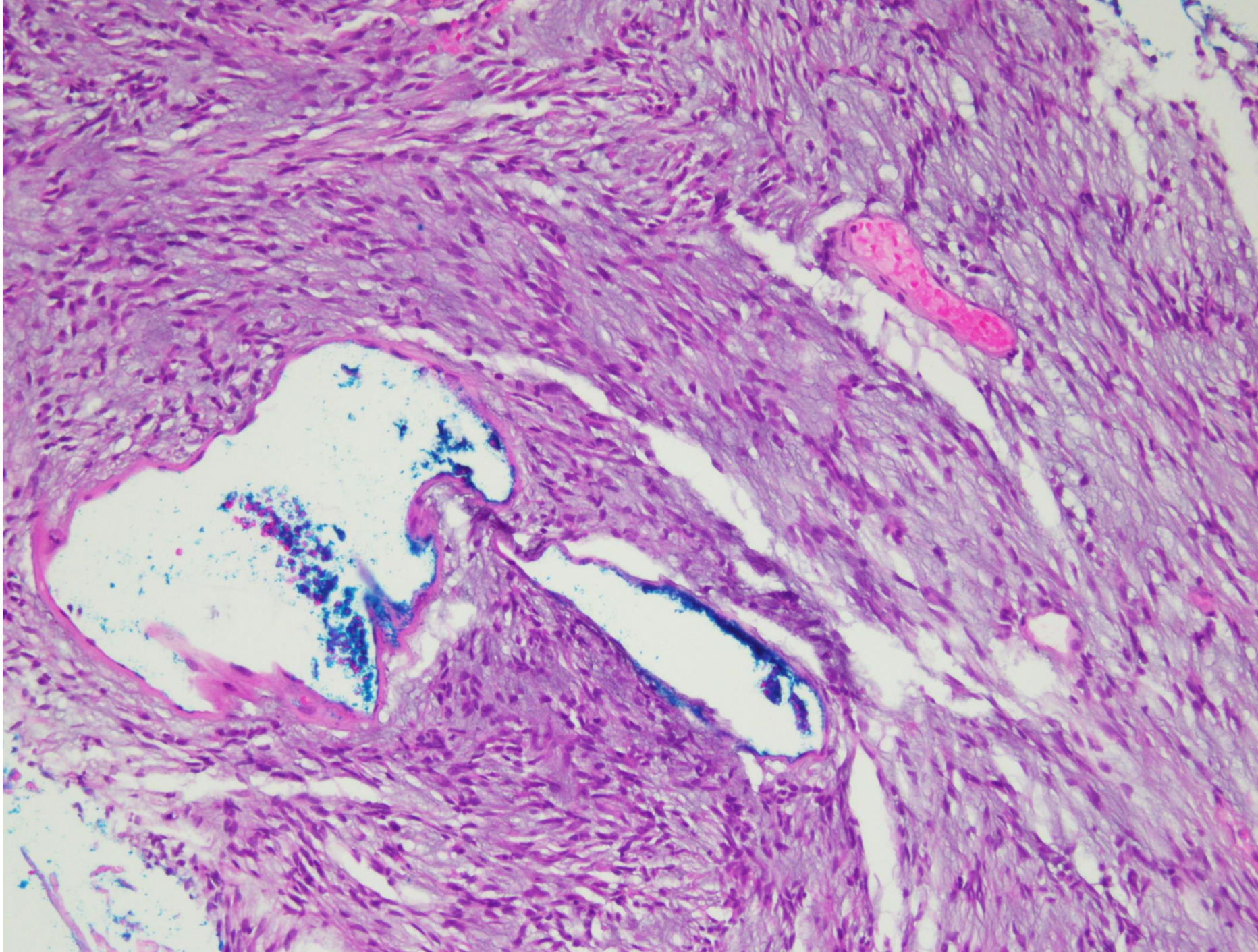




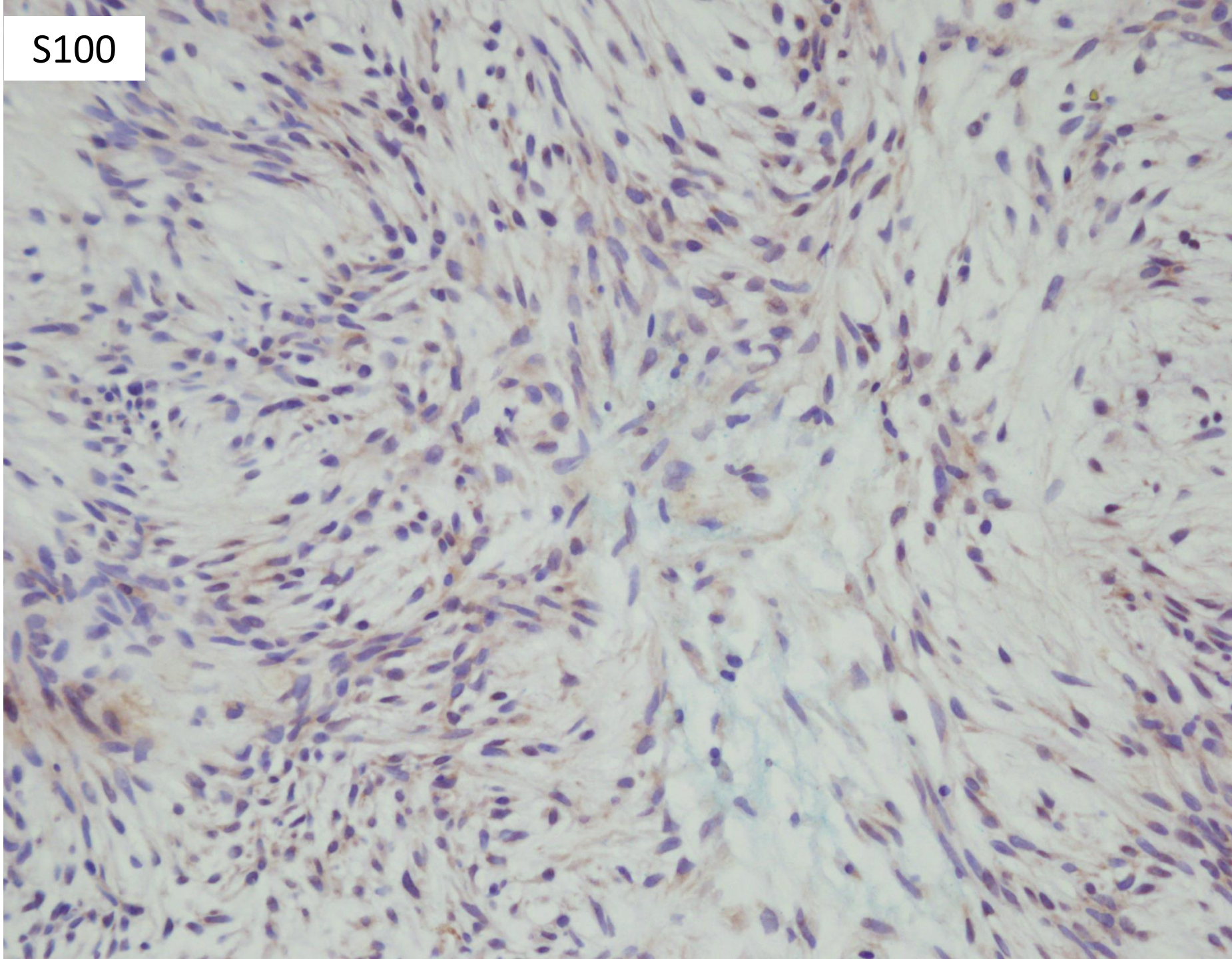








S100



Core biopsy, right breast lump:

Schwannoma



Schwannoma

- Benign peripheral nerve sheath tumour.
- More often occurs in the skin over the breast than in breast parenchyma.
- More commonly affects women than men.
- Clinically presents as a painless lump that can resemble a fibroadenoma.
- Multiple lesions are associated with NF1, in which malignant change can occur.



 Breast
Pathology
Course 2014

