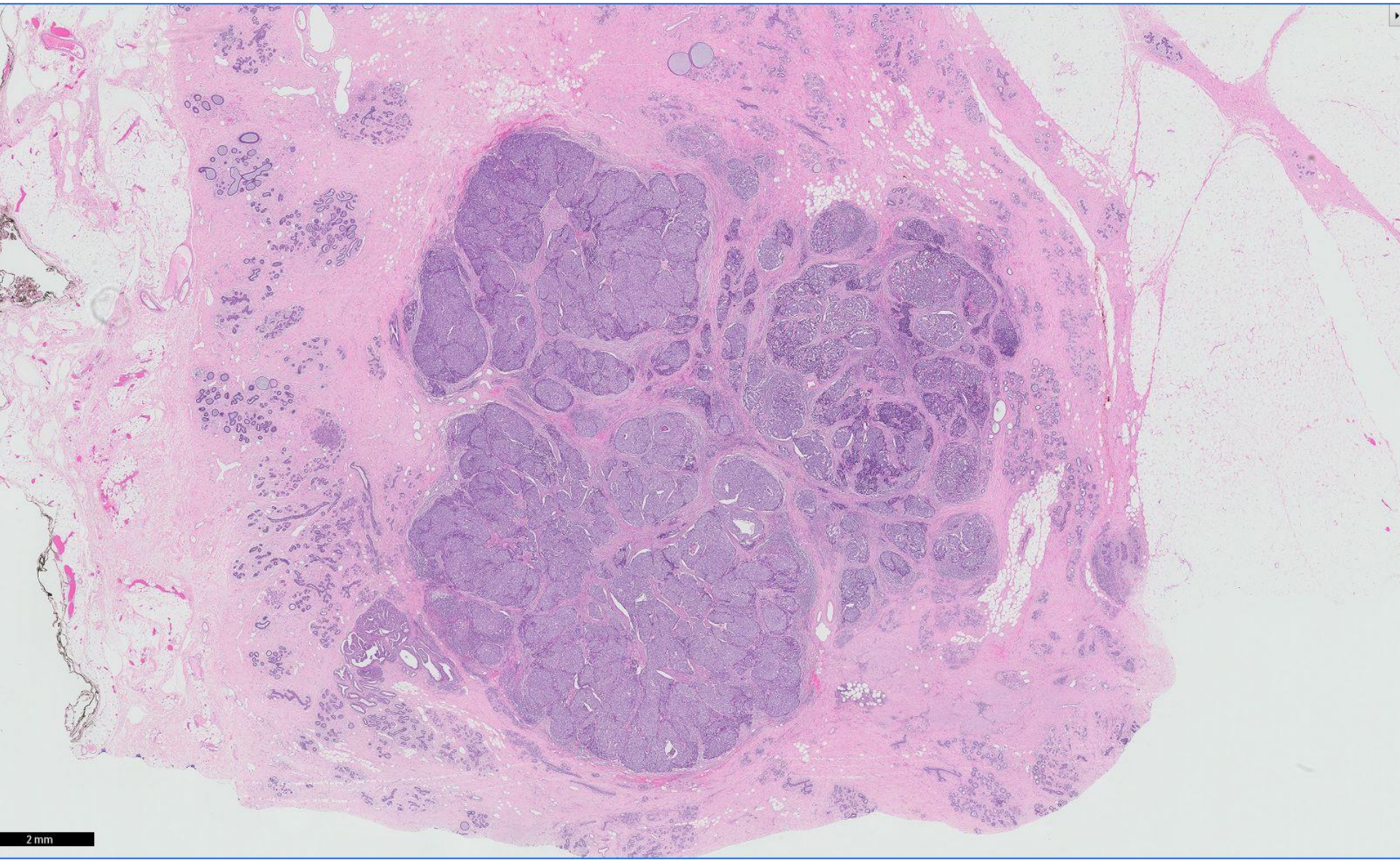


# *Case 19*

38 year old woman with a right breast lump.

Right simple mastectomy with sentinel node biopsy performed after a core biopsy disclosed invasive carcinoma.

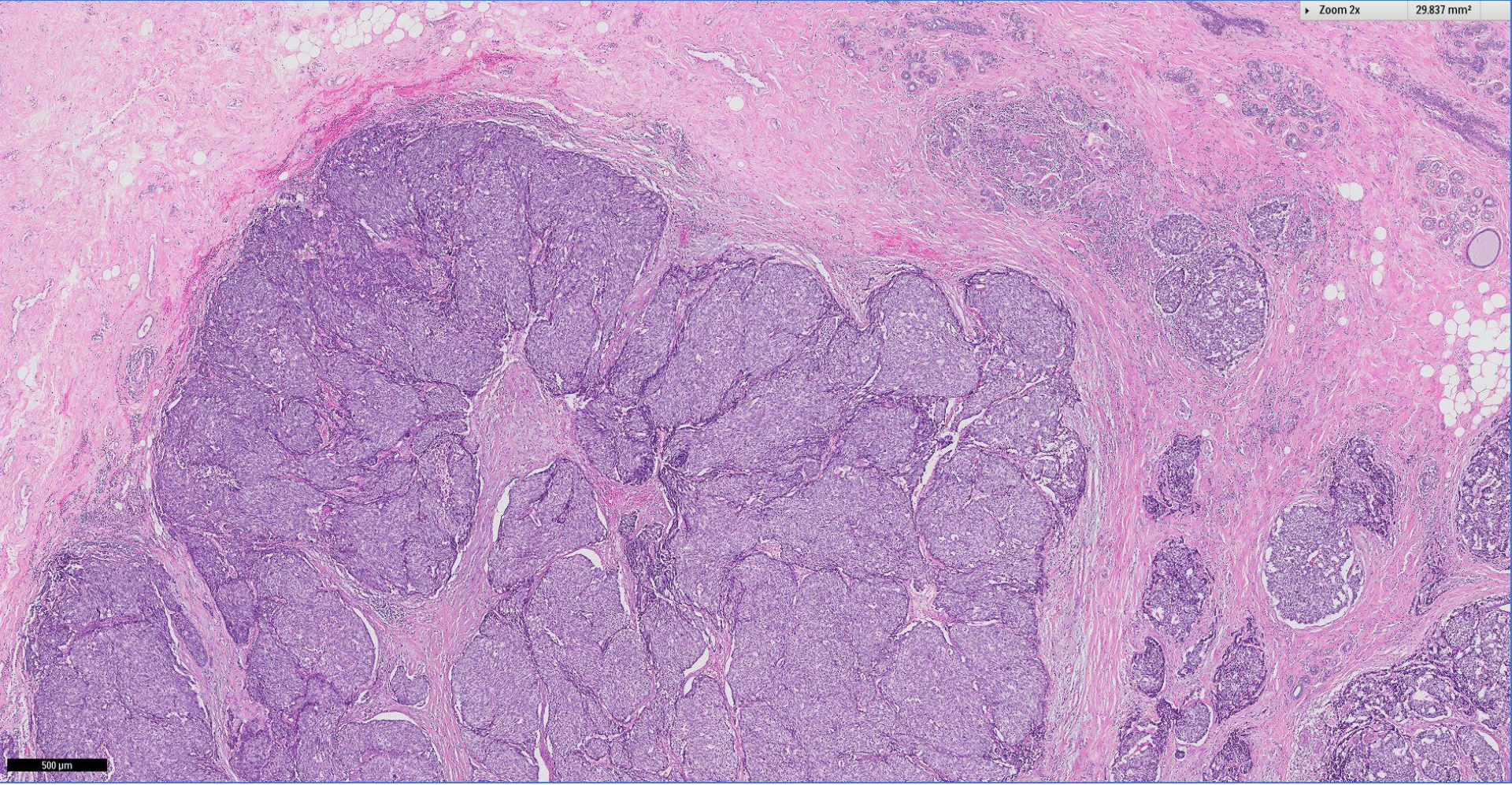




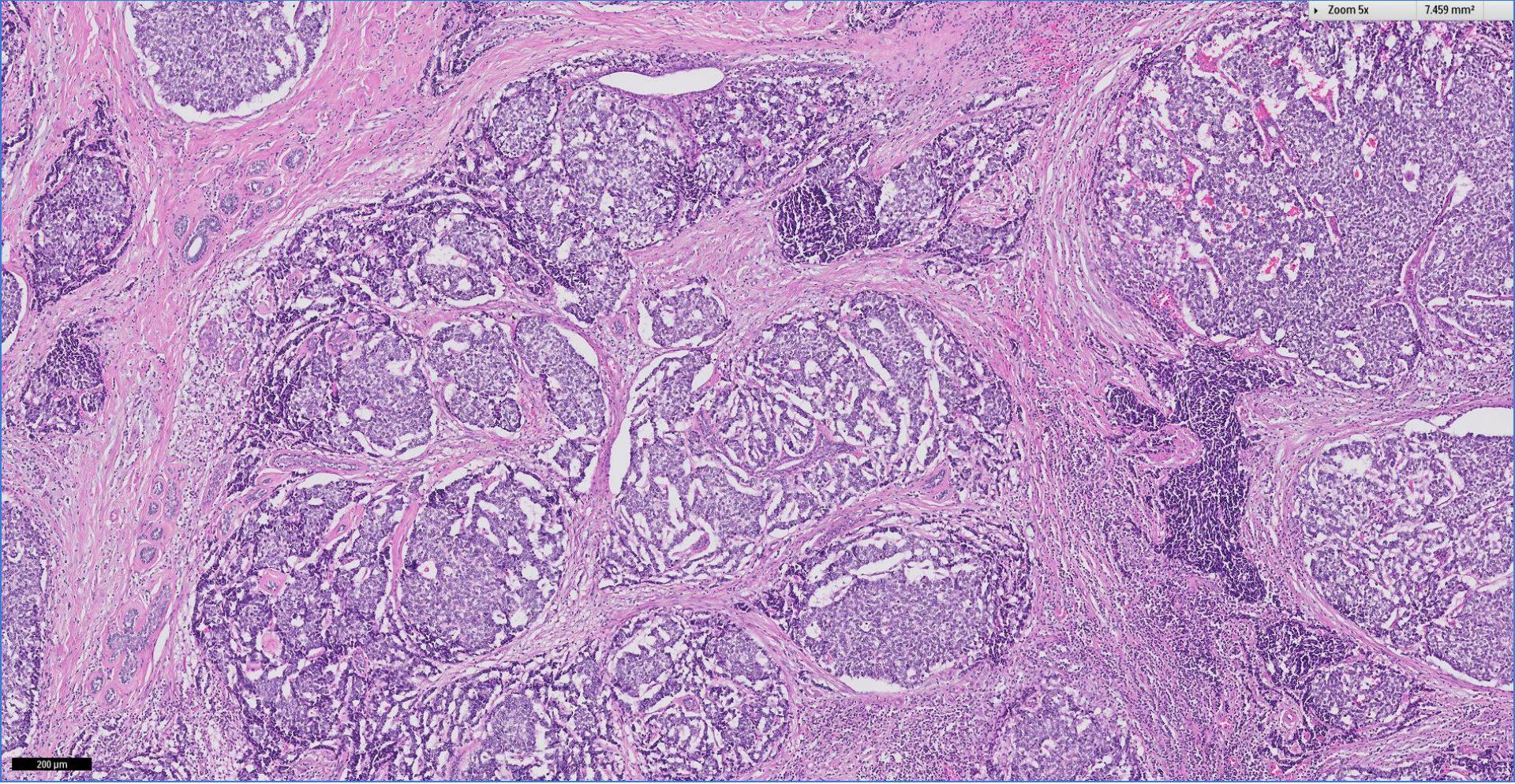
2 mm

Zoom 2x

29.837 mm<sup>2</sup>

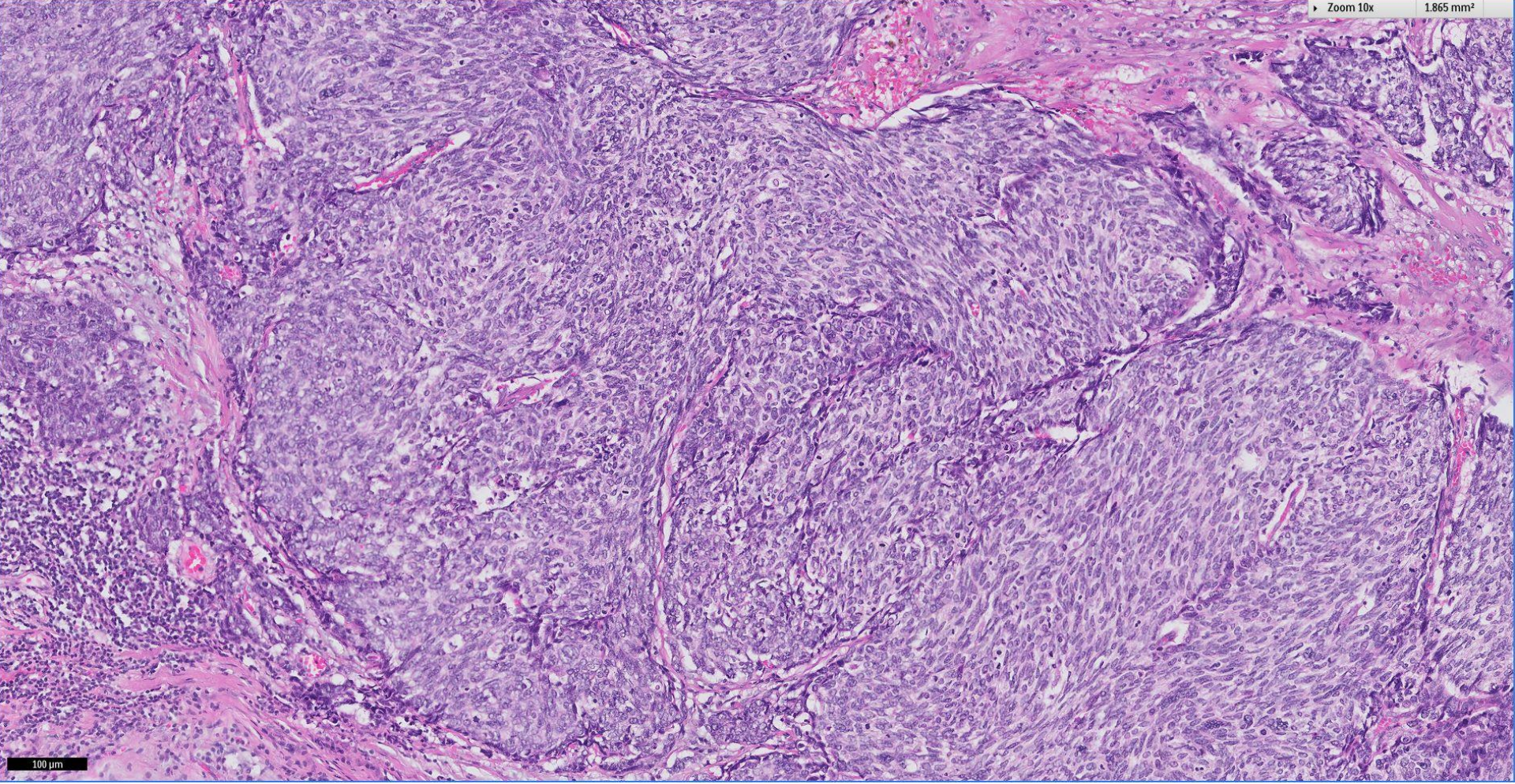


500 μm



Zoom 10x

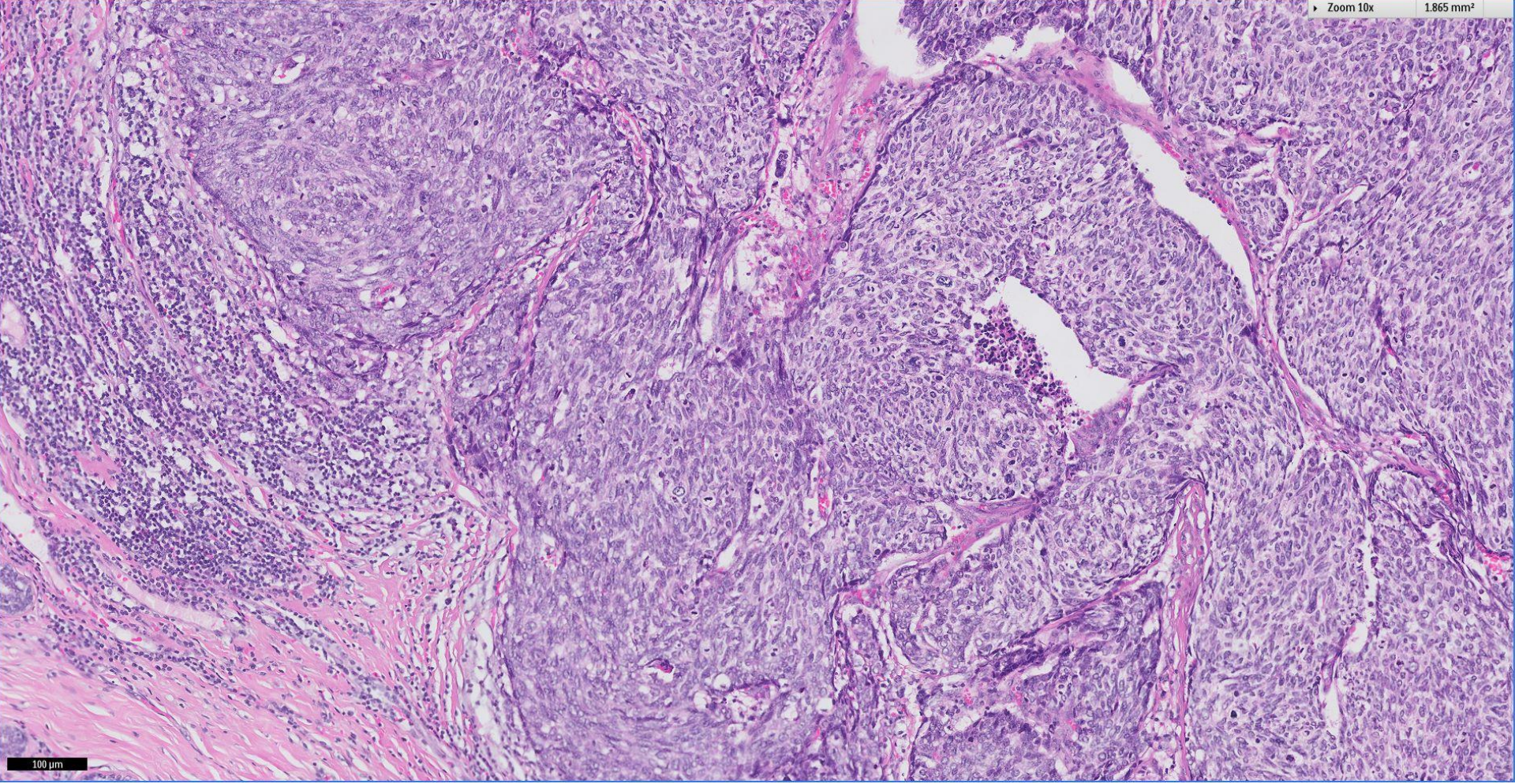
1.865 mm<sup>2</sup>



100  $\mu$ m

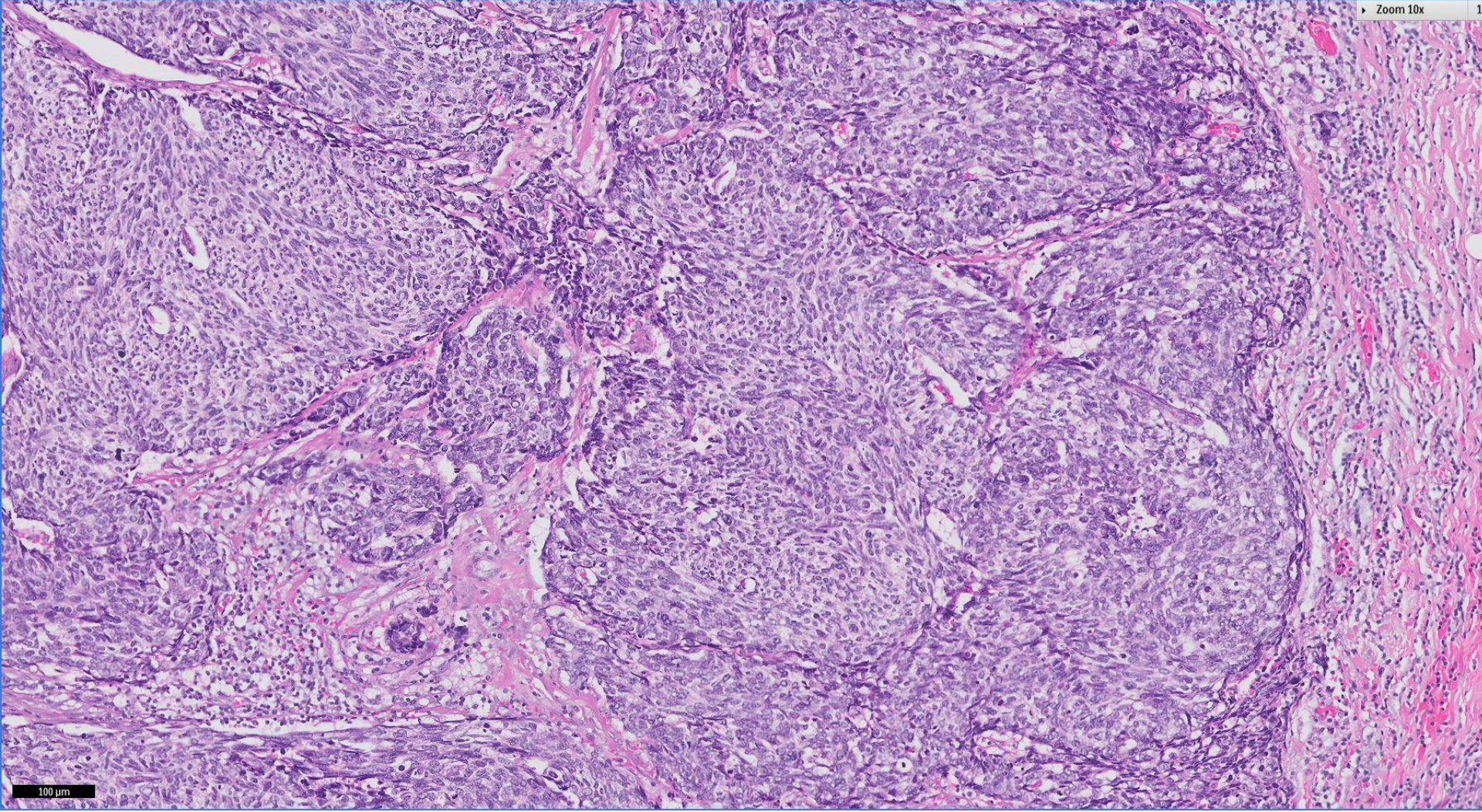
Zoom 10x

1.865 mm<sup>2</sup>



100 μm



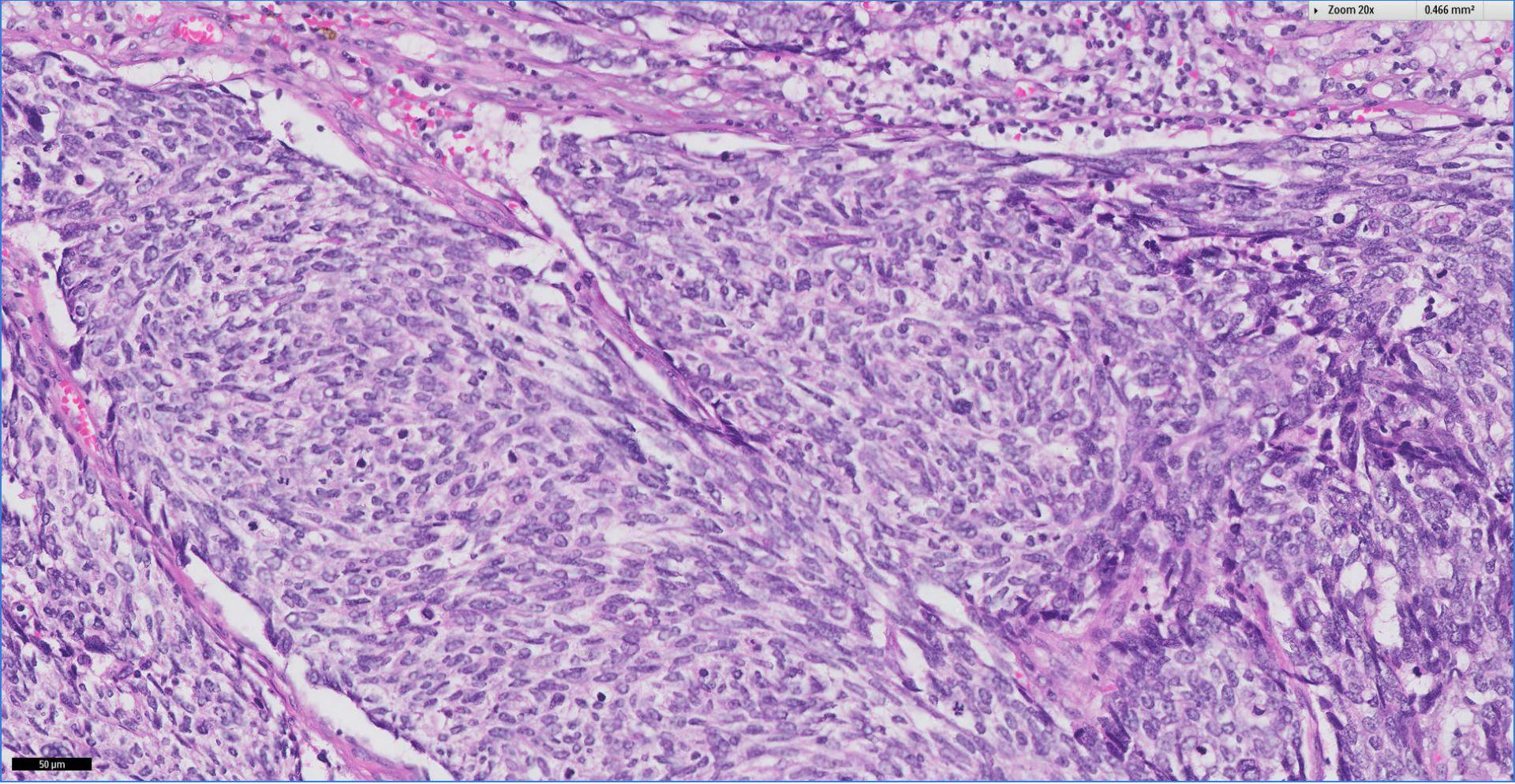


100  $\mu$ m

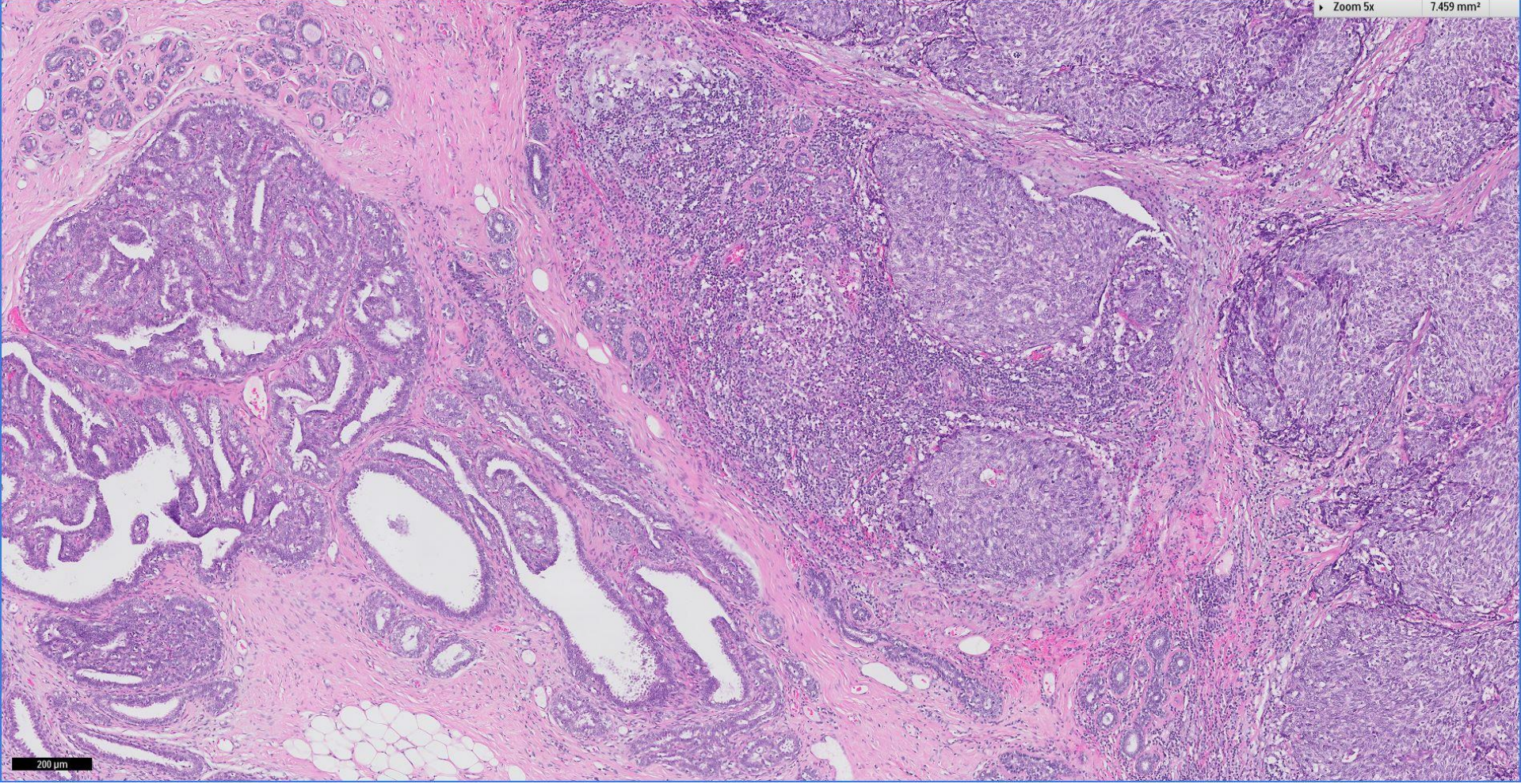


Zoom 20x

0.466 mm<sup>2</sup>

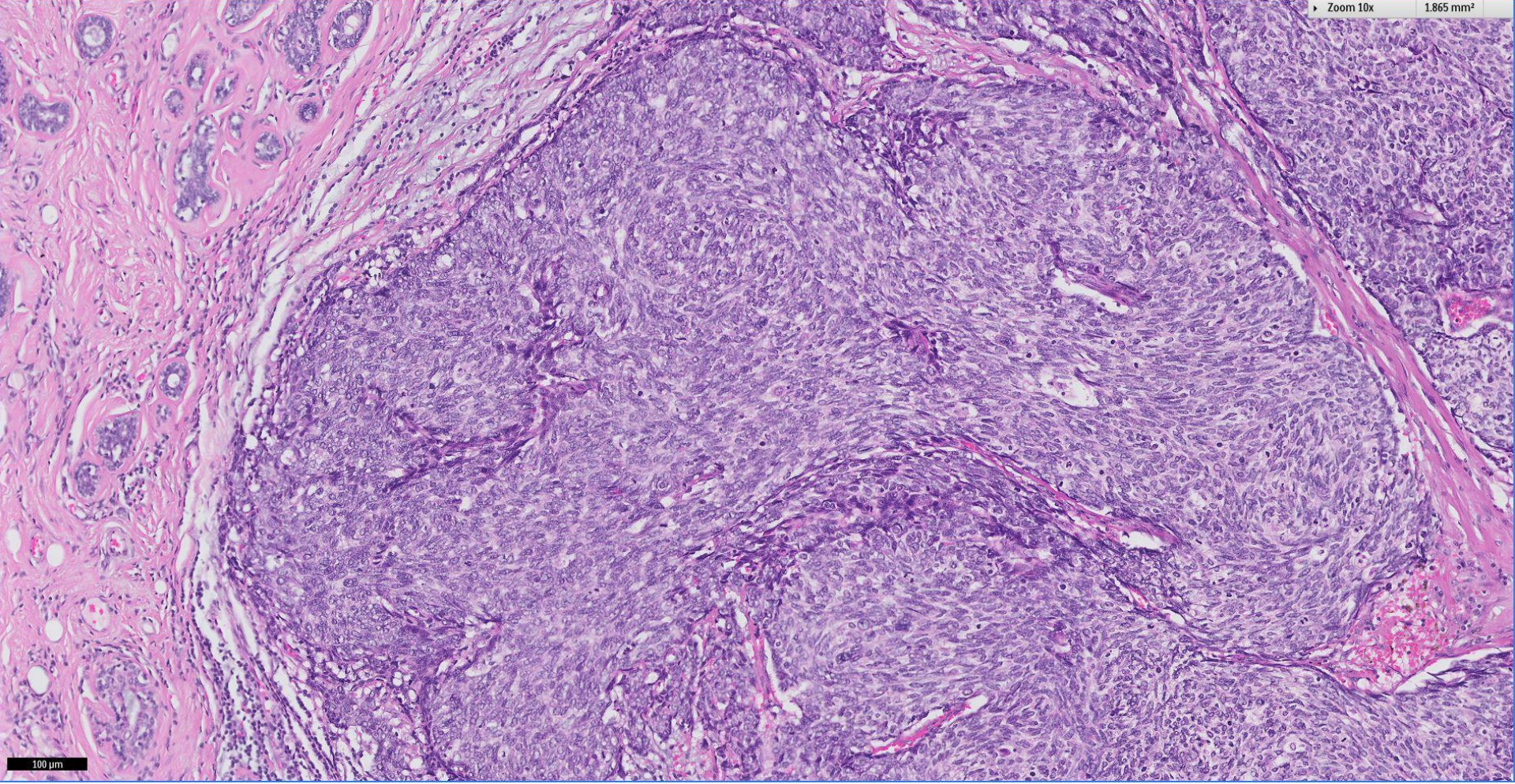


50 μm

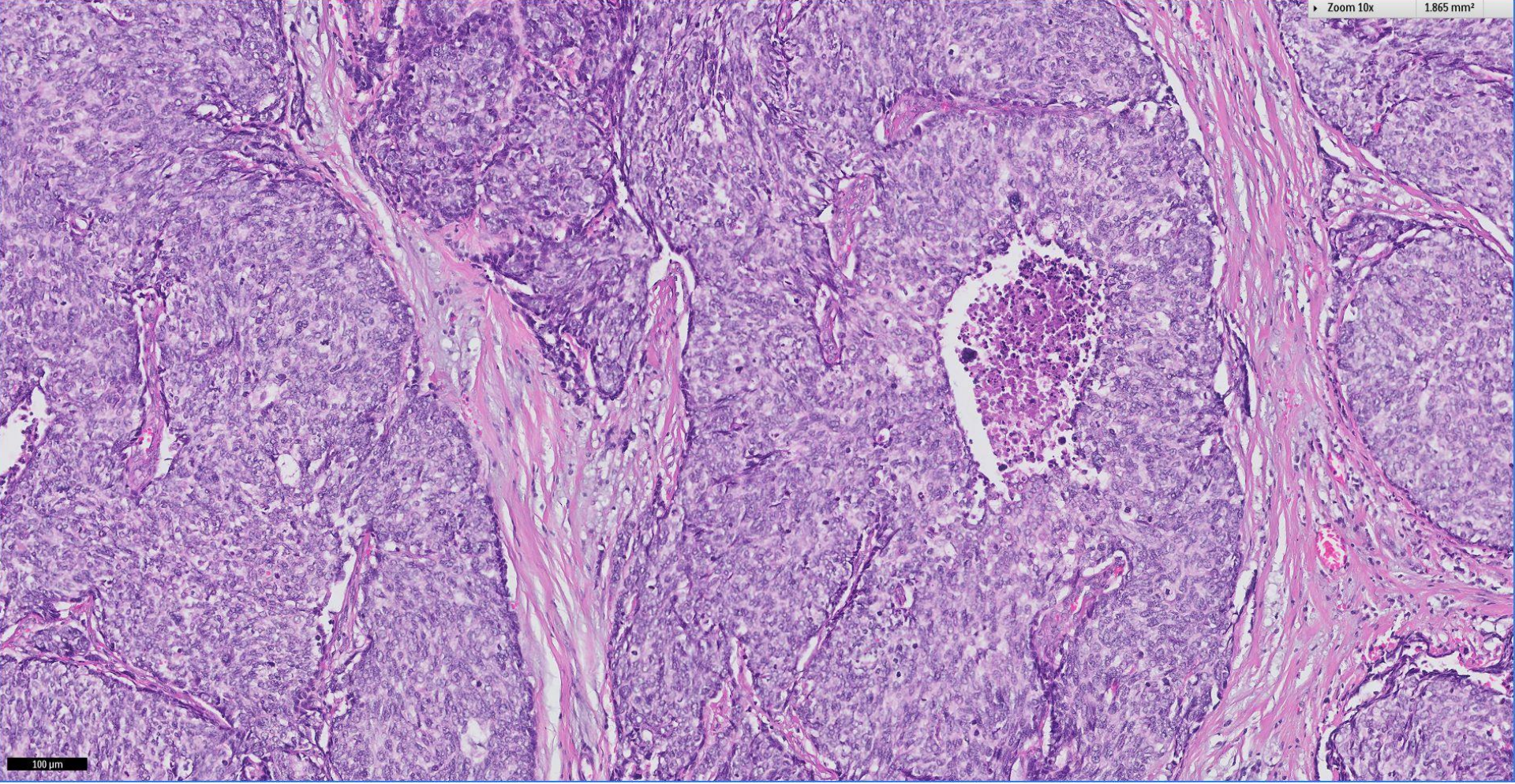


Zoom 10x

1.865 mm<sup>2</sup>

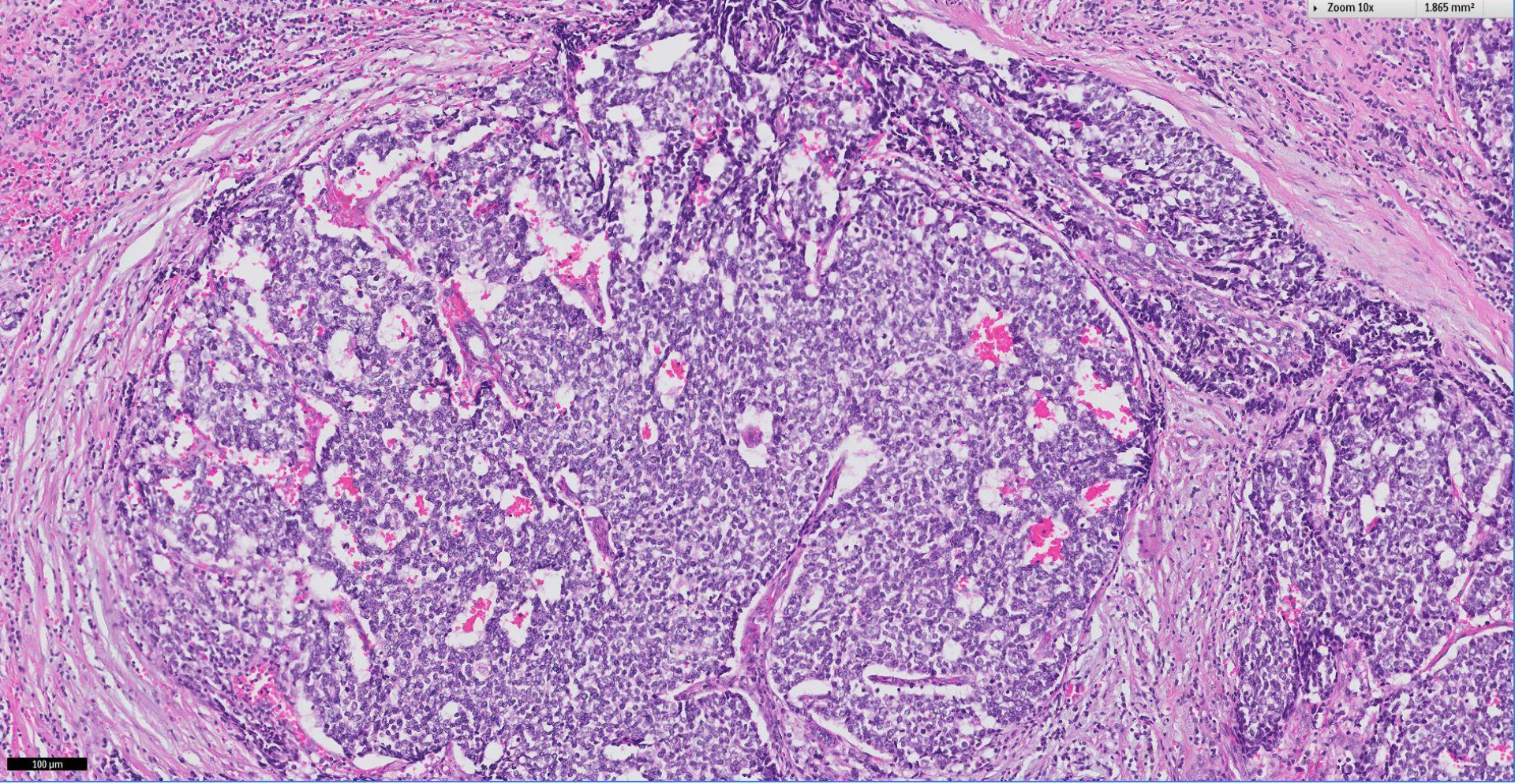


100  $\mu$ m



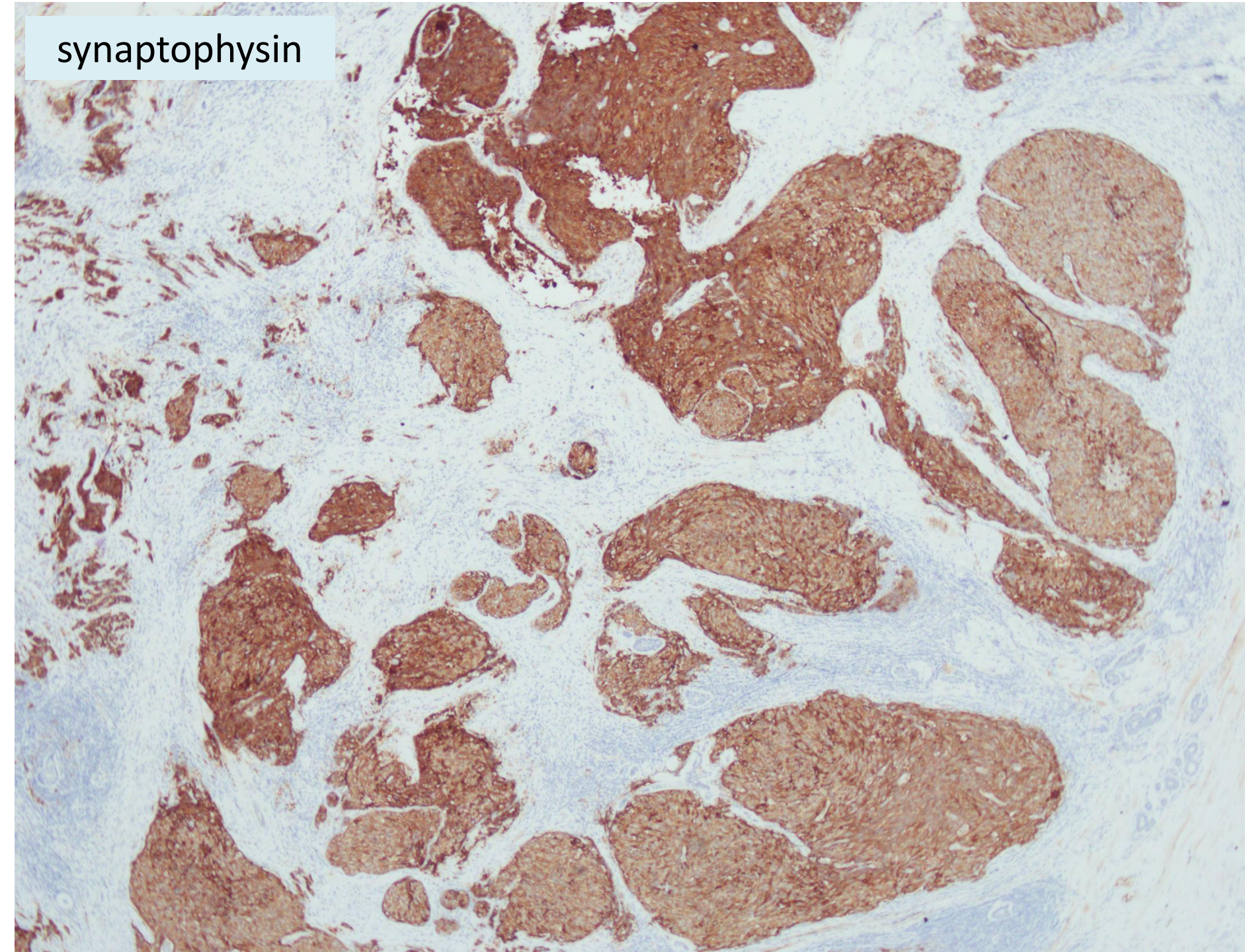
Zoom 10x

1.865 mm<sup>2</sup>

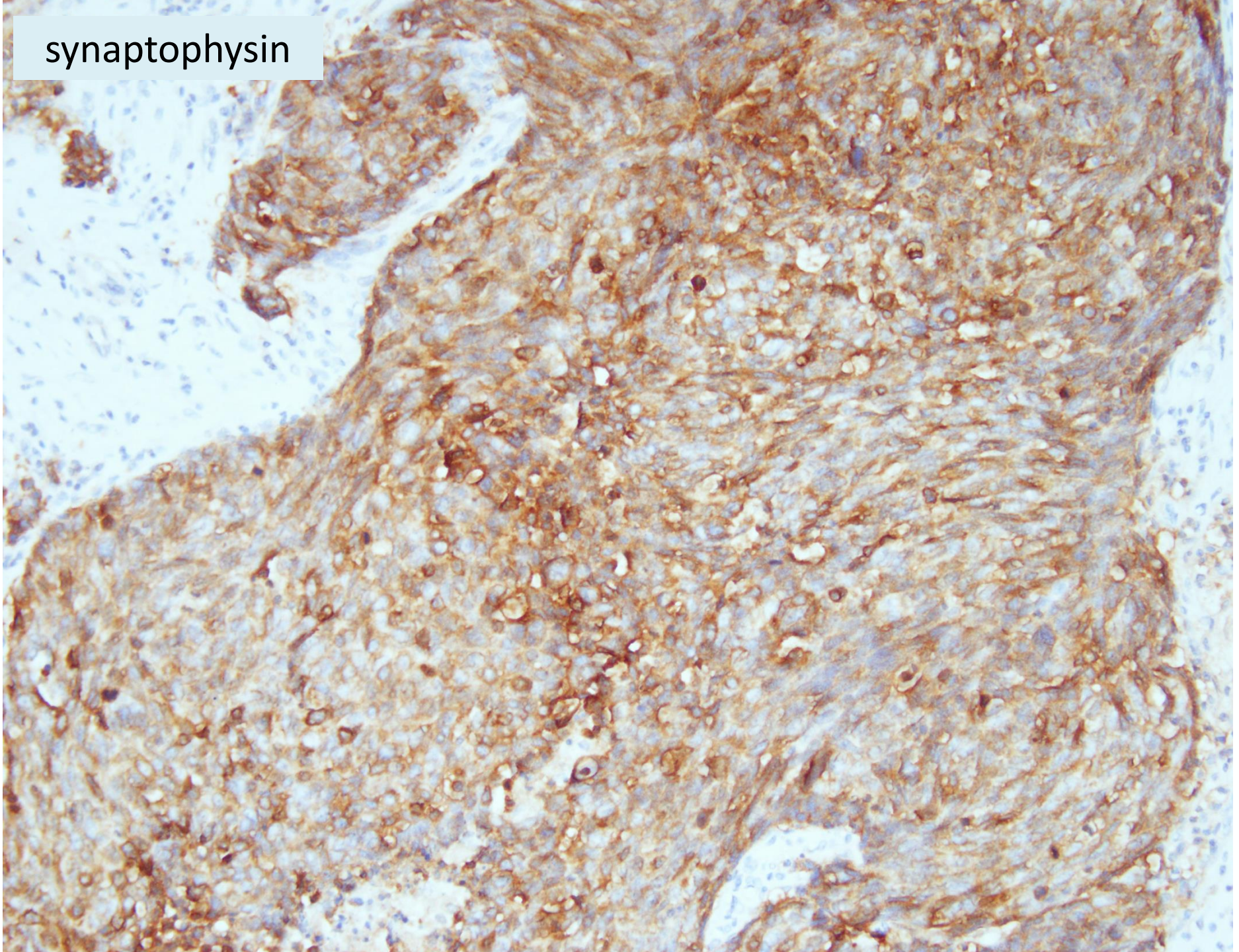


100  $\mu$ m

synaptophysin



synaptophysin



Right simple mastectomy:

*Invasive ductal carcinoma with  
neuroendocrine features, grade 3*





Carcinoma with neuroendocrine features	
Neuroendocrine tumour, well-differentiated	8246/3
Neuroendocrine carcinoma, poorly differentiated (small cell carcinoma)	8041/3
Carcinoma with neuroendocrine differentiation	8574/3

*WHO 2012*



 Breast  
Pathology  
Course 2014

