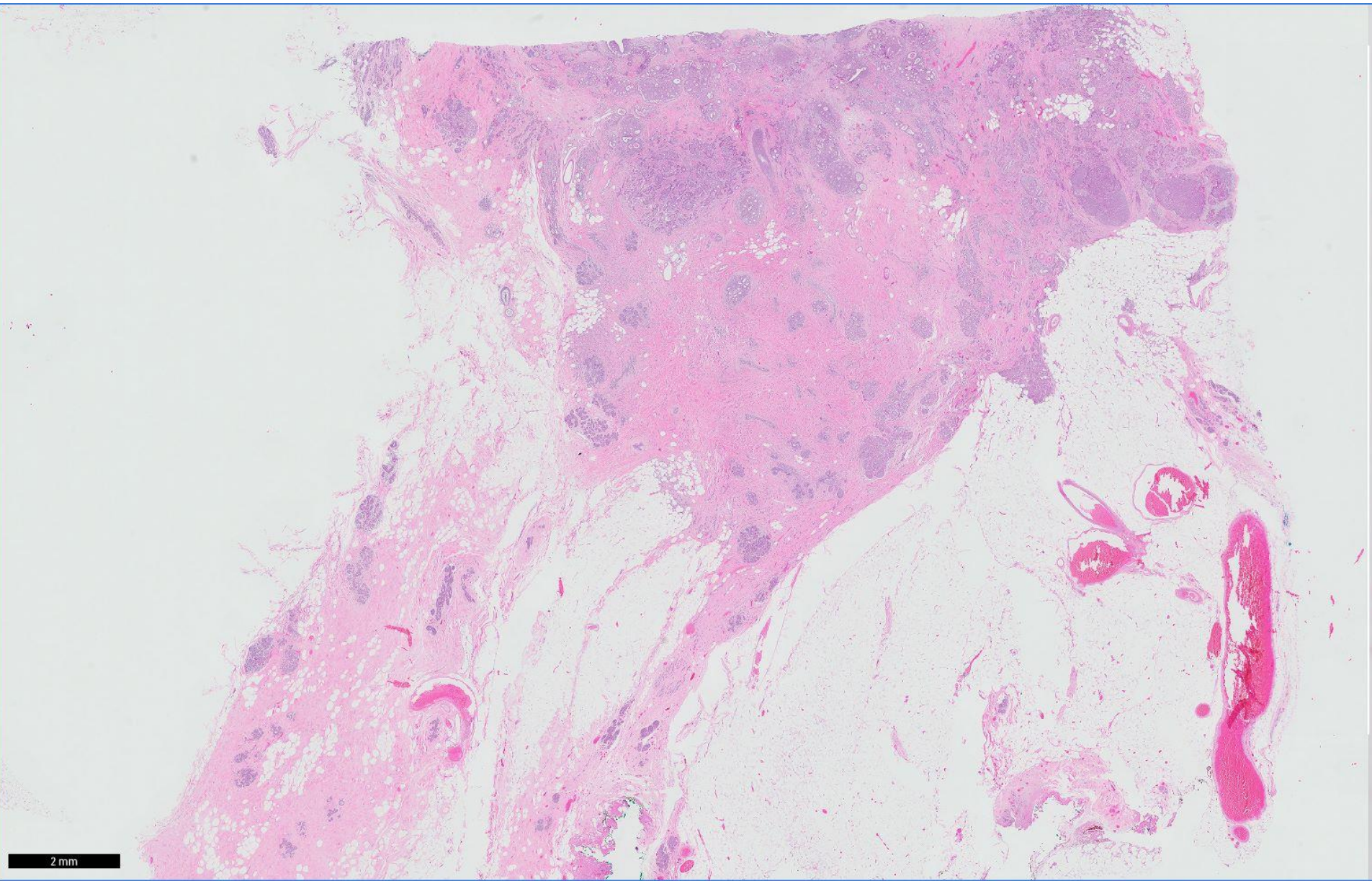


## *Case 12*

47 year old woman with a 3 cm breast lesion was subjected to a wide excision.

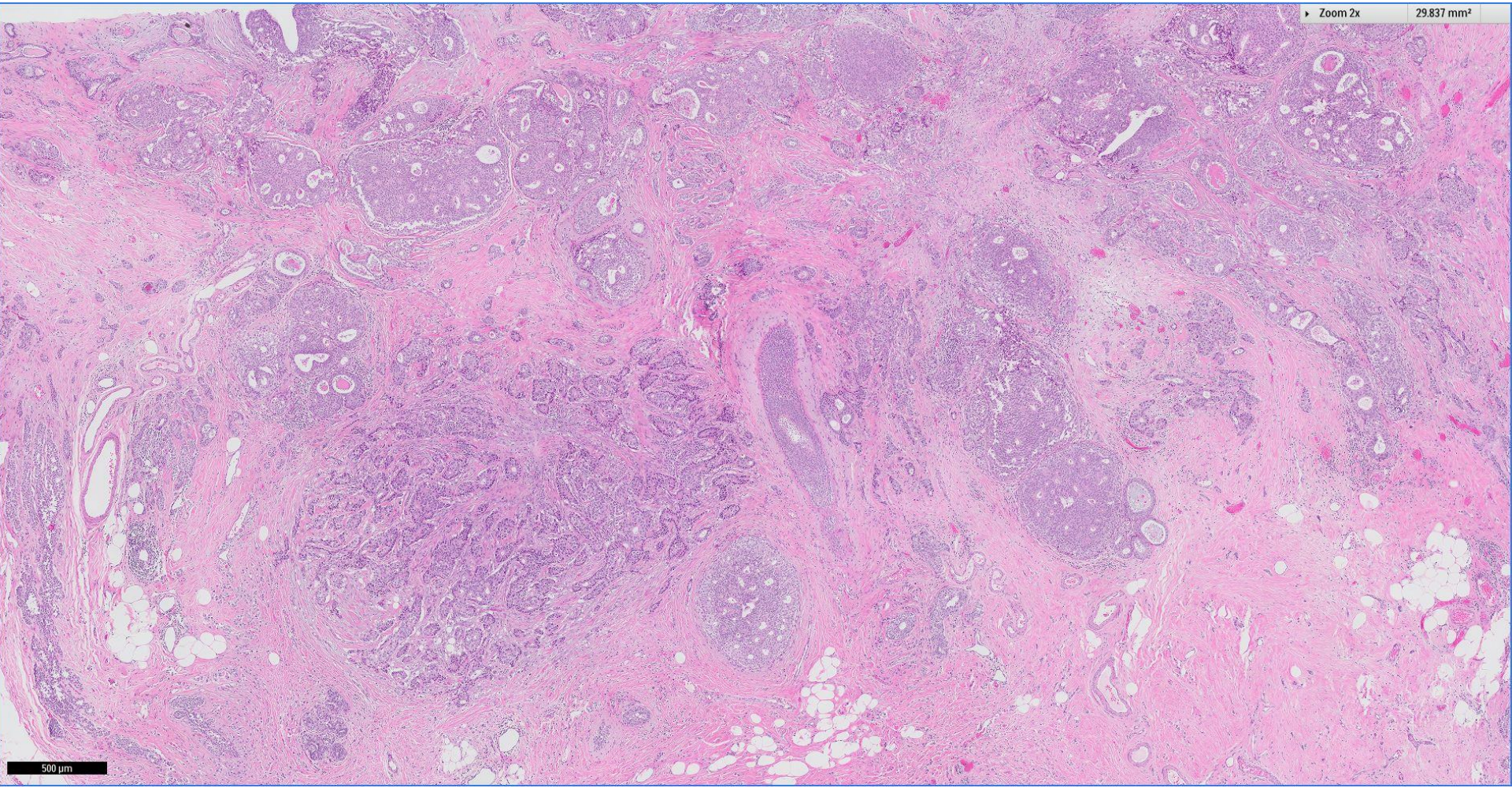




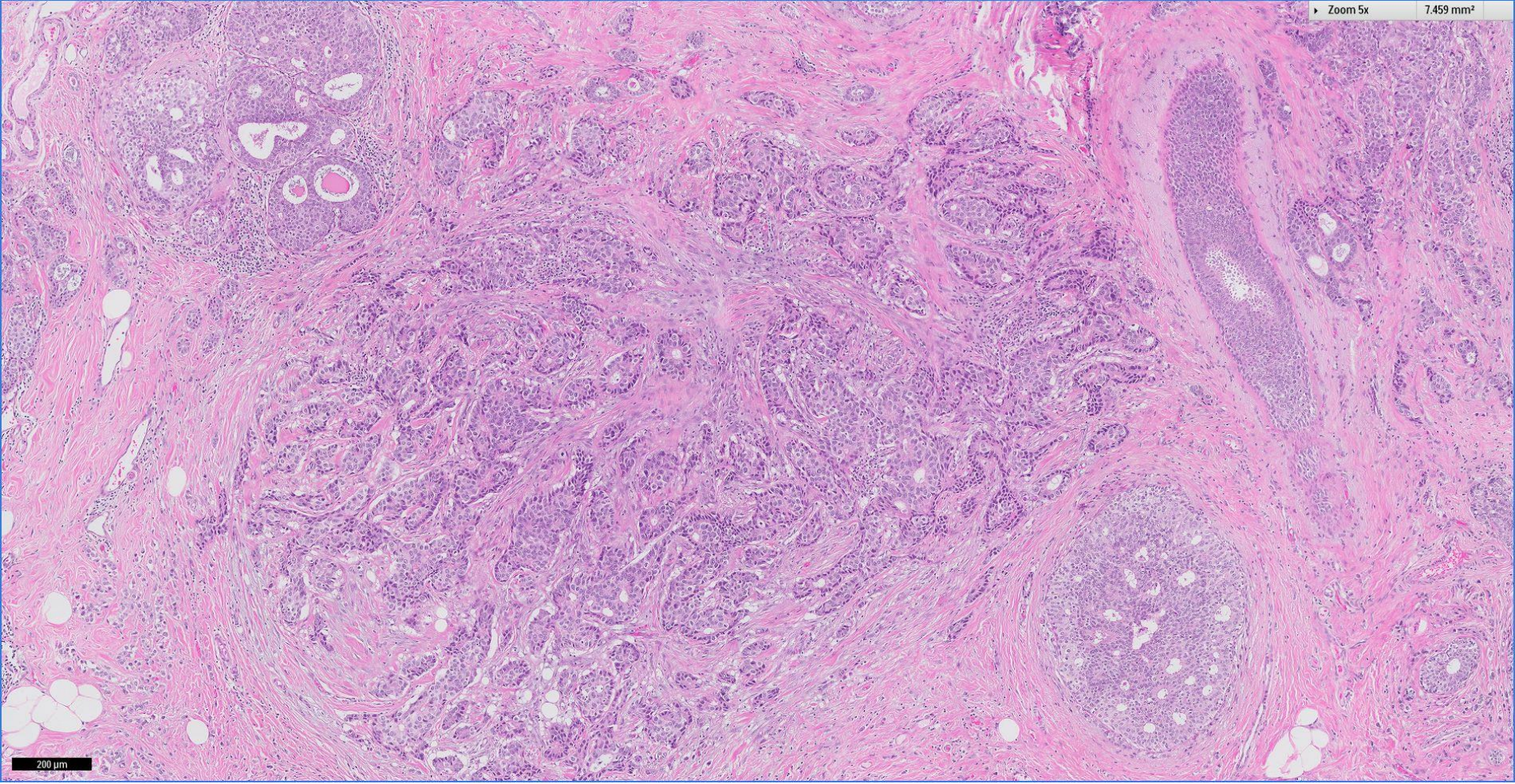
2 mm

Zoom 2x

29.837 mm<sup>2</sup>



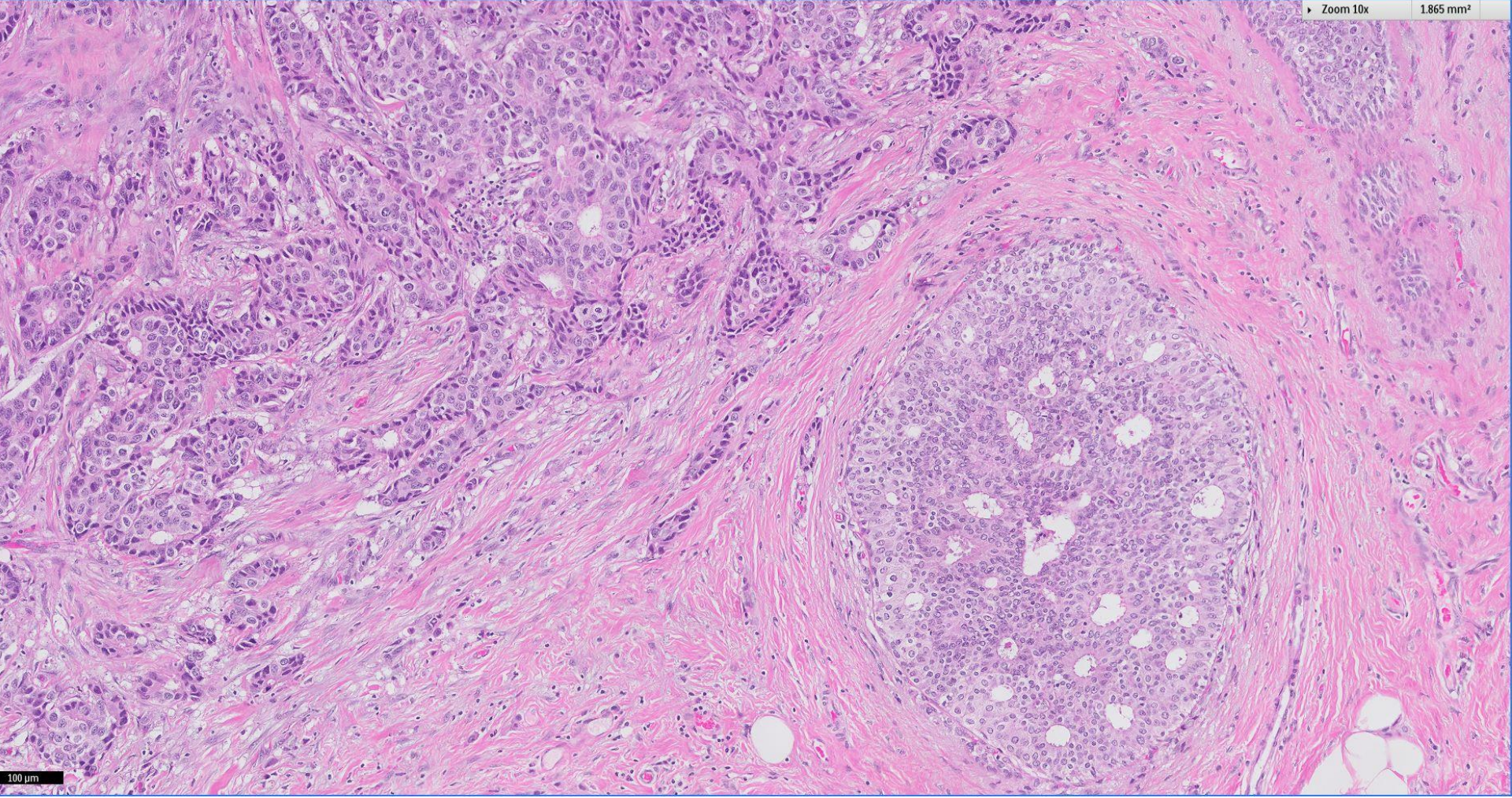
500  $\mu$ m



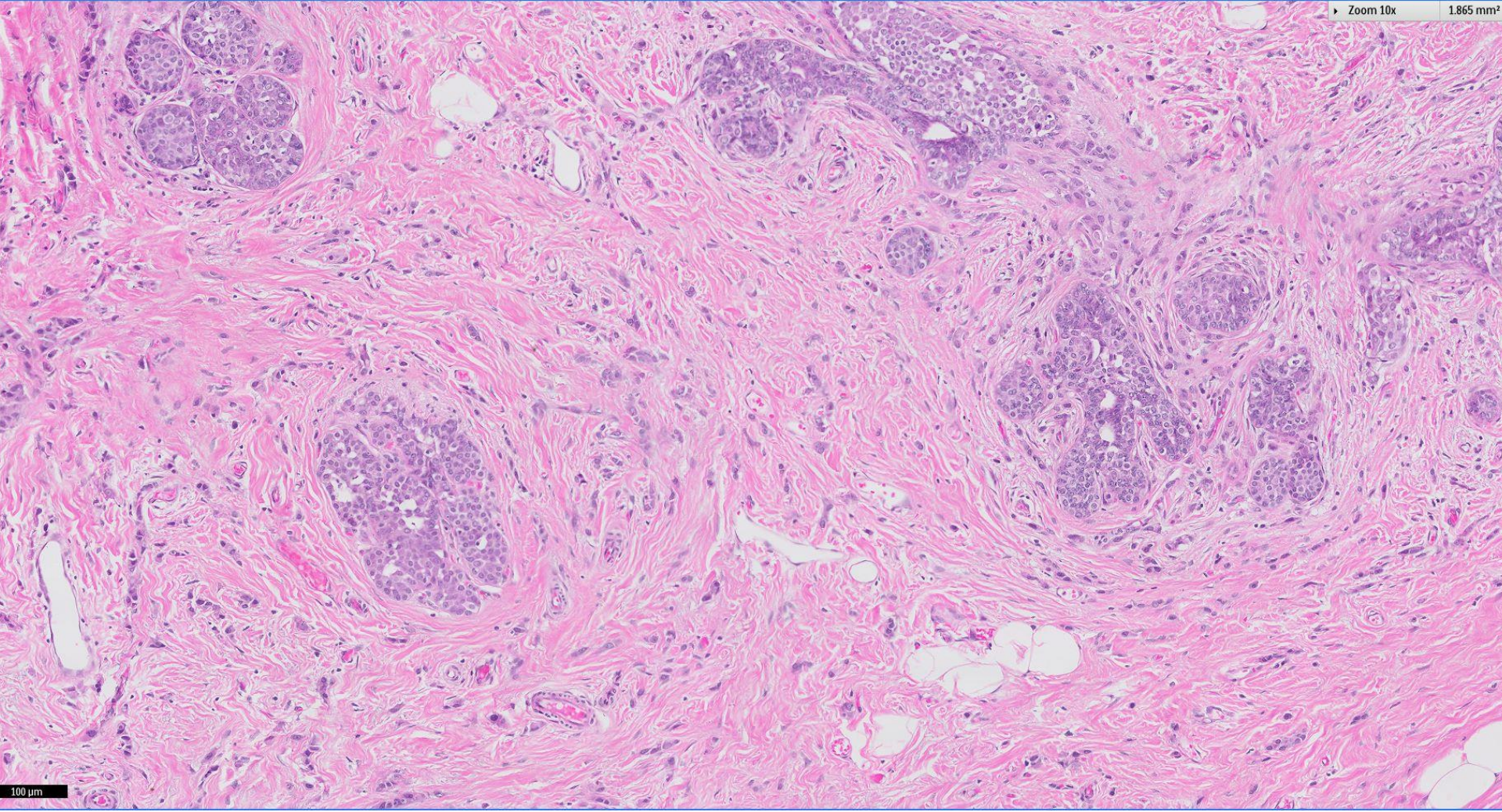
200 μm

Zoom 10x

1.865 mm<sup>2</sup>



100  $\mu$ m



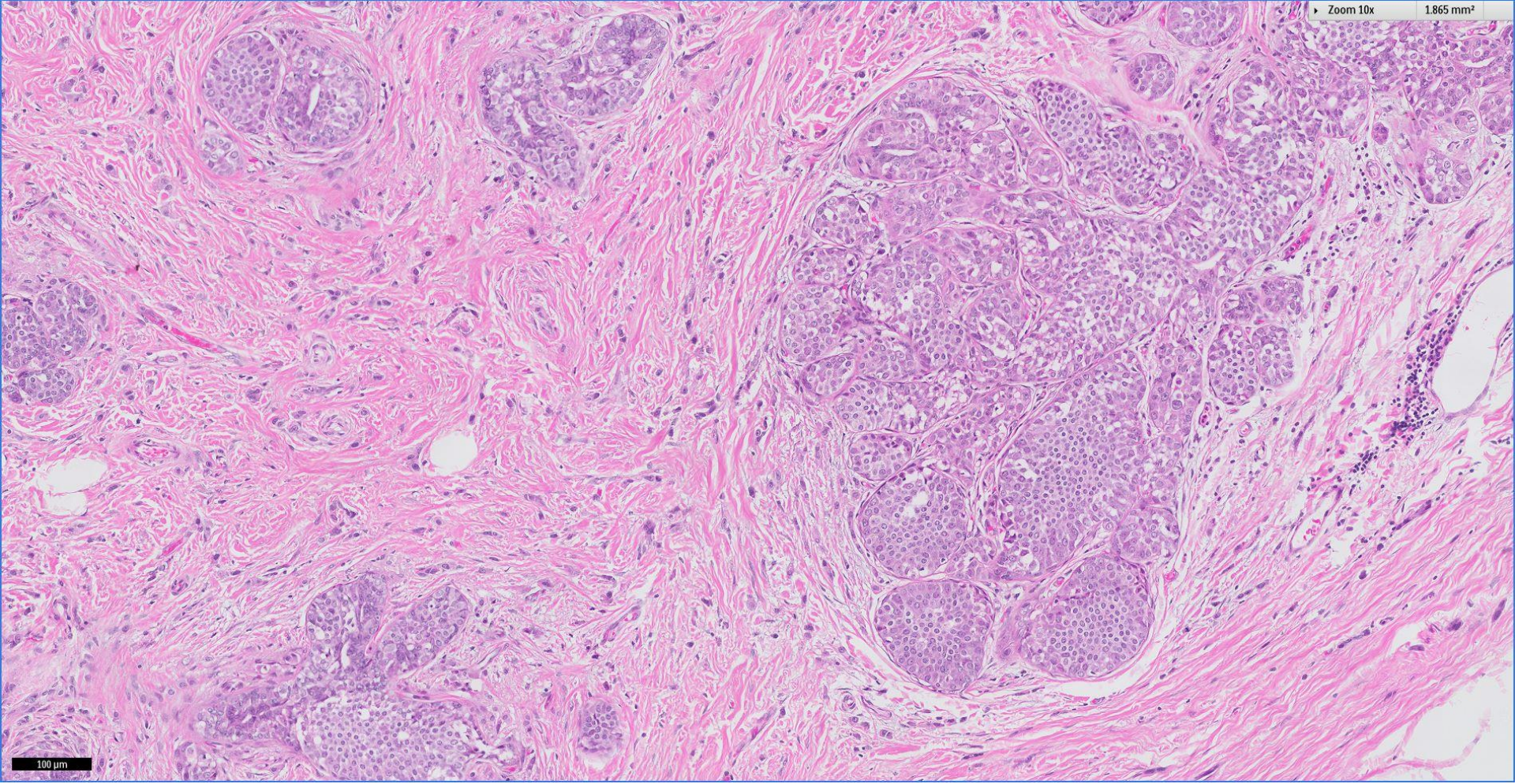


Academia

SGH

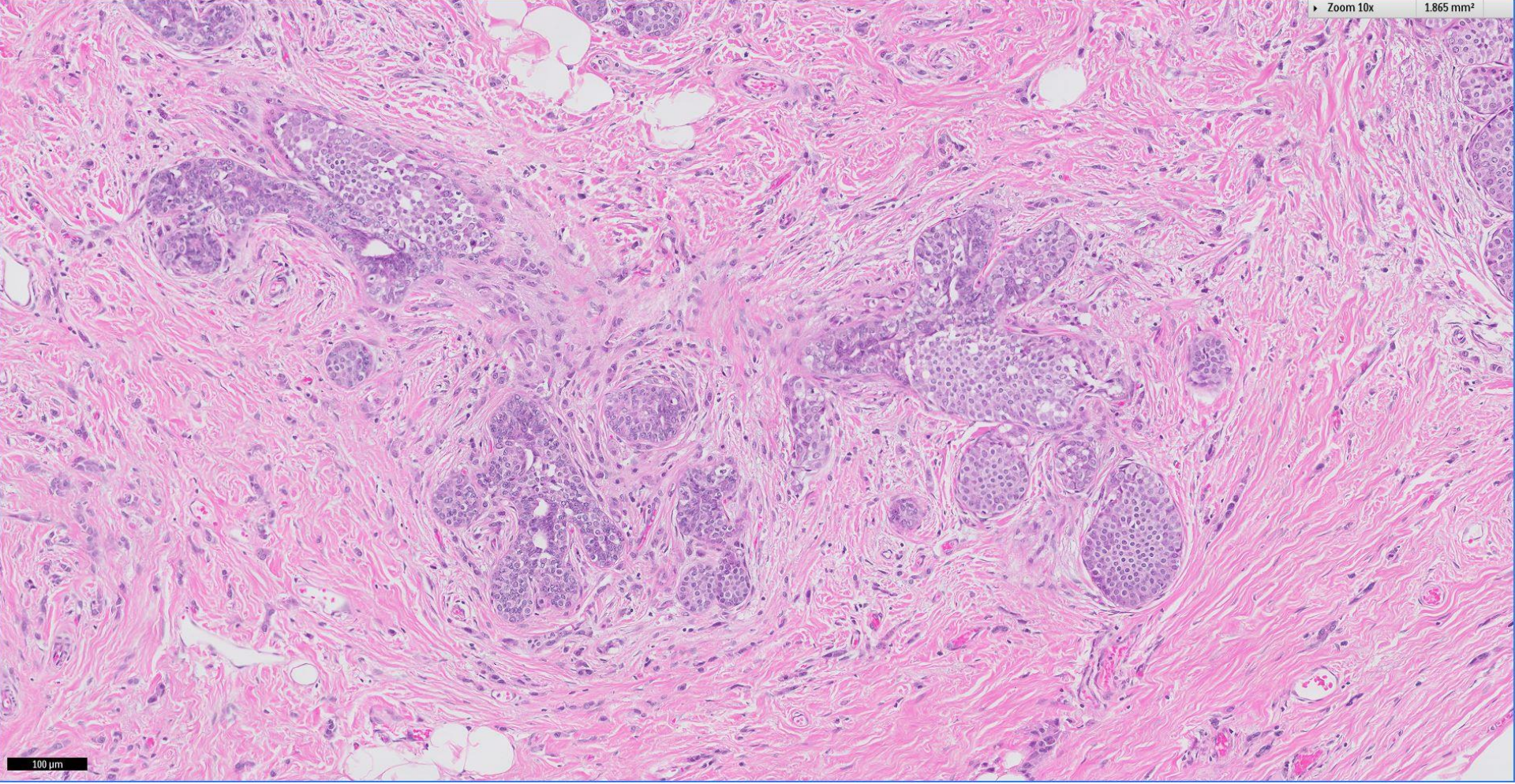
Zoom 10x

1.865 mm<sup>2</sup>



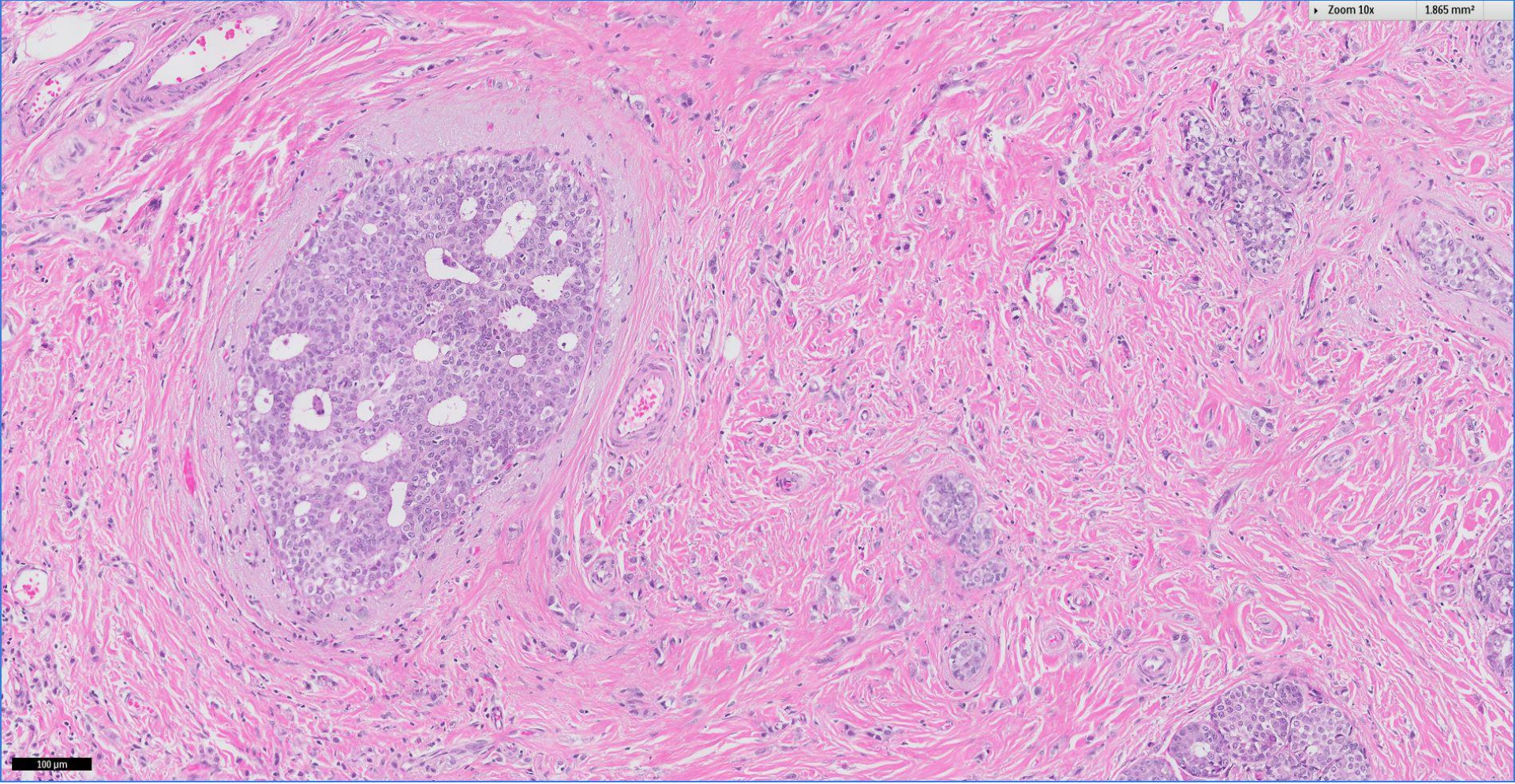
100 μm





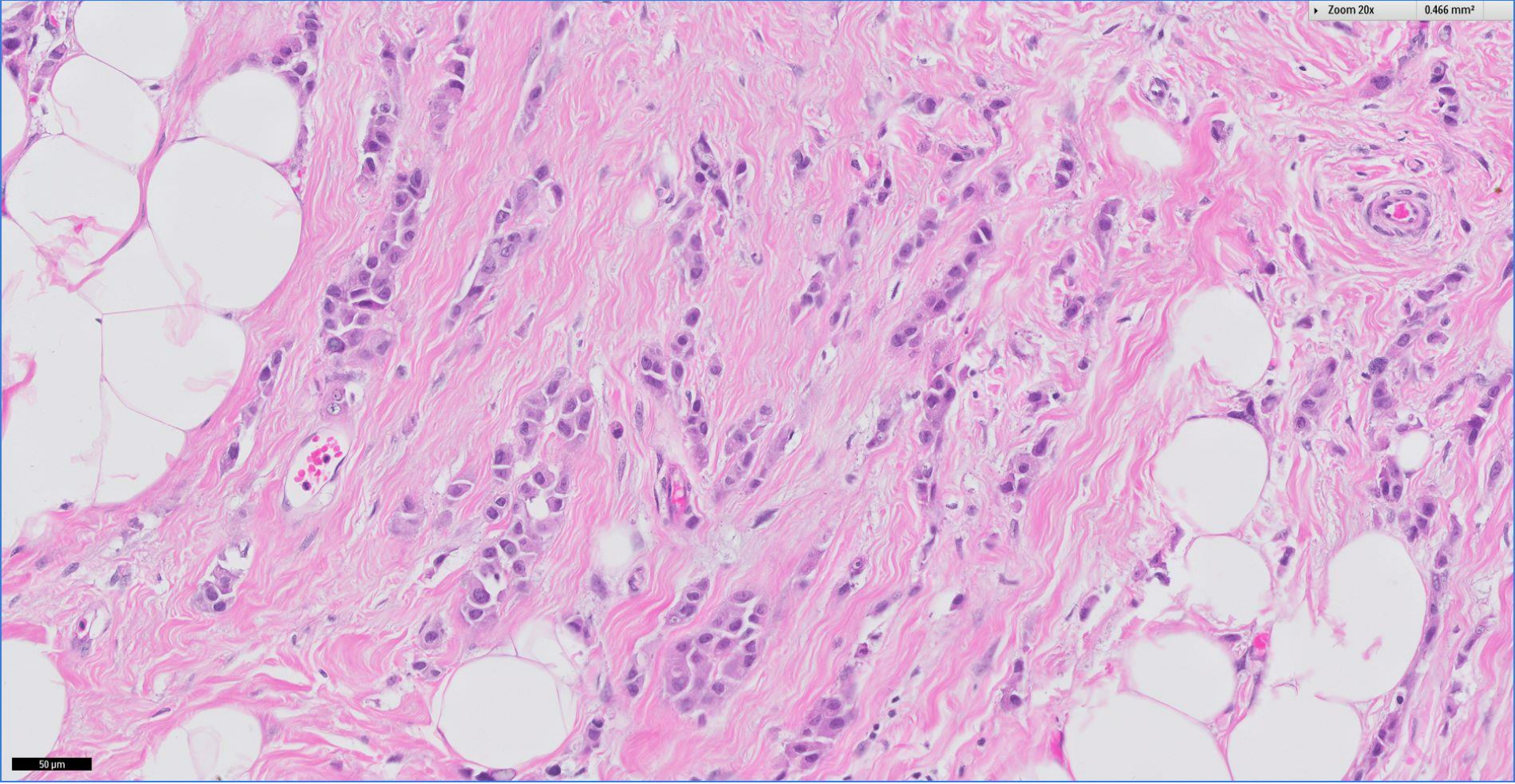
Zoom 10x

1.865 mm<sup>2</sup>



100 μm

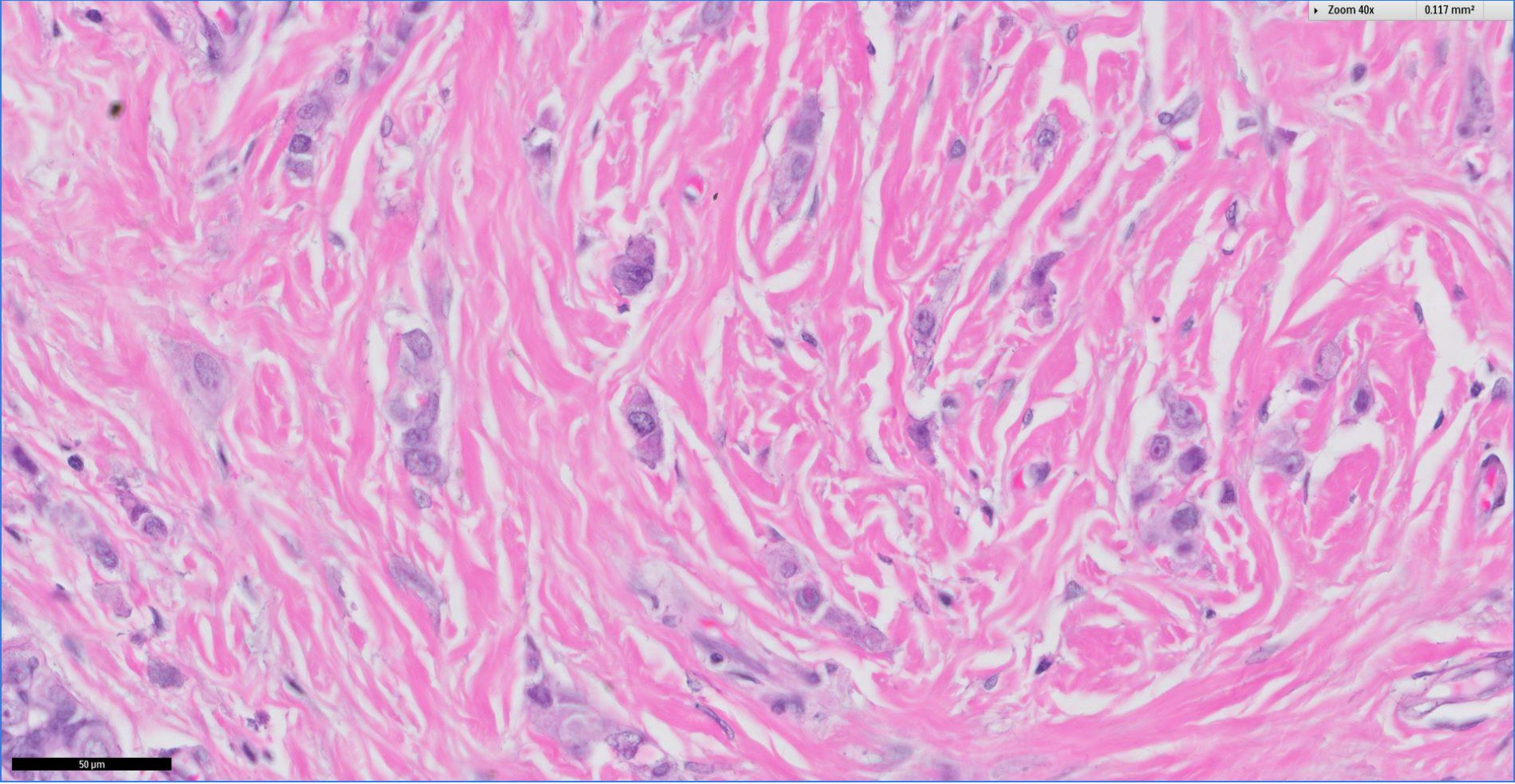
Zoom 20x 0.466 mm<sup>2</sup>



50  $\mu$ m

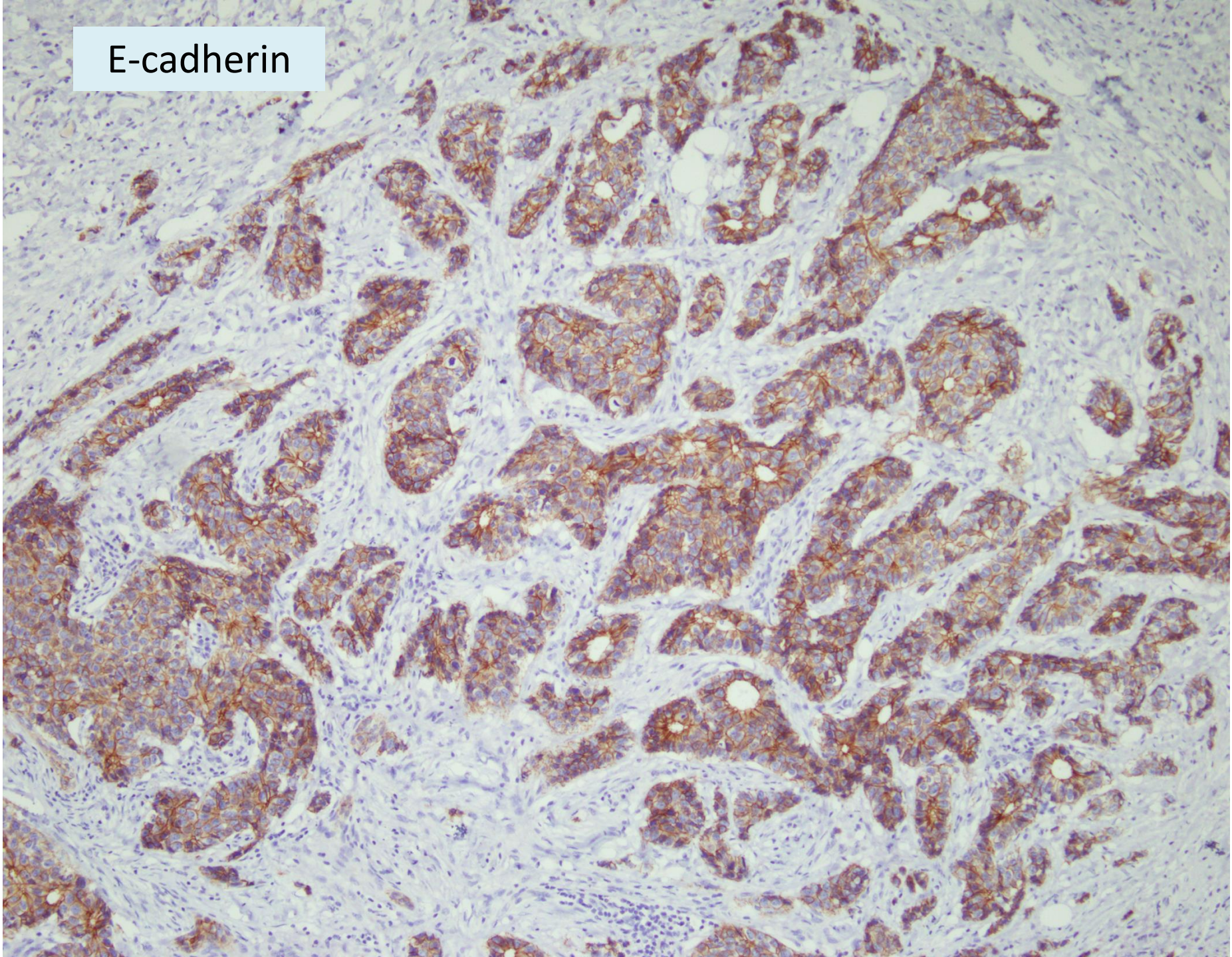
Zoom 40x

0.117 mm<sup>2</sup>

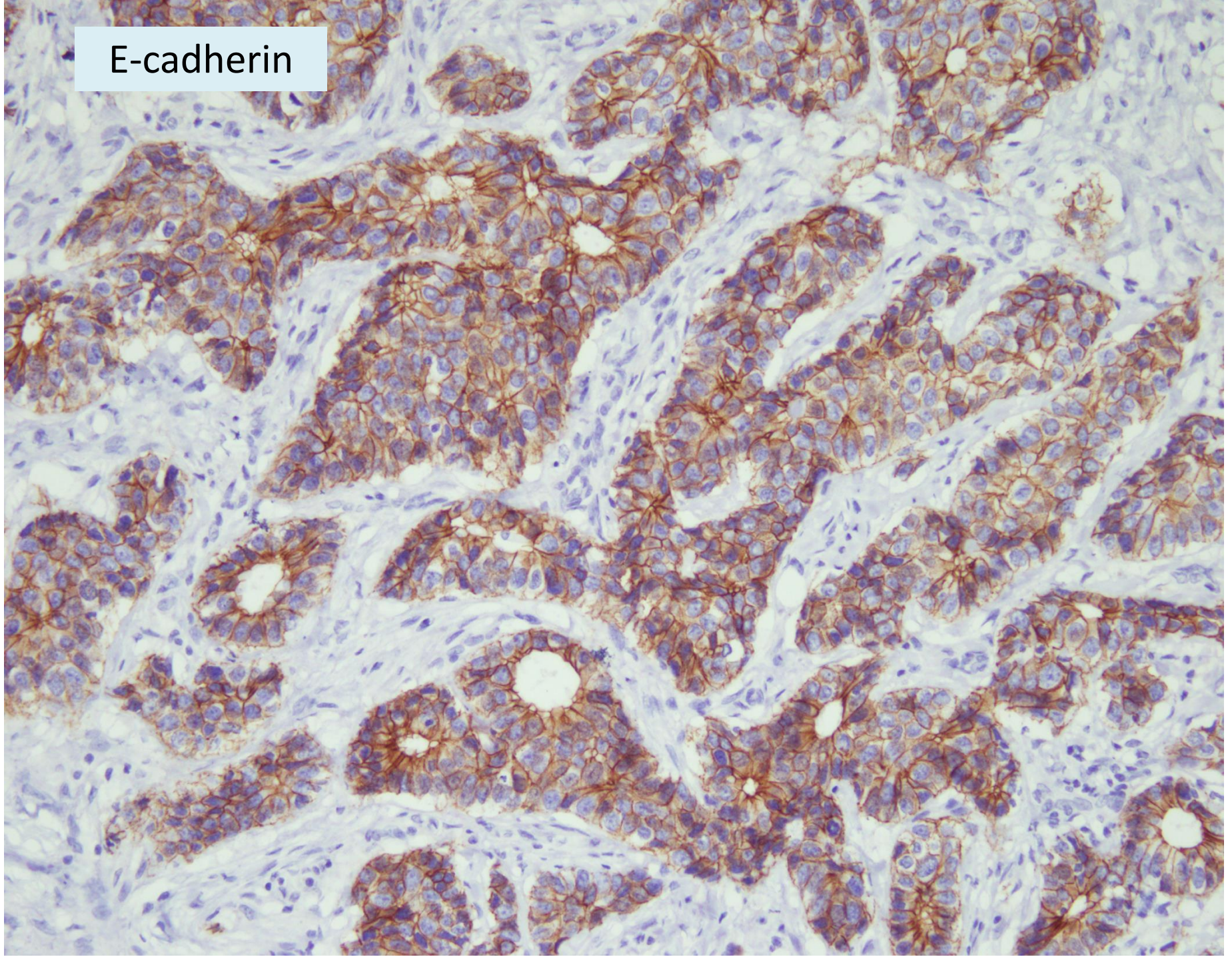


50 μm

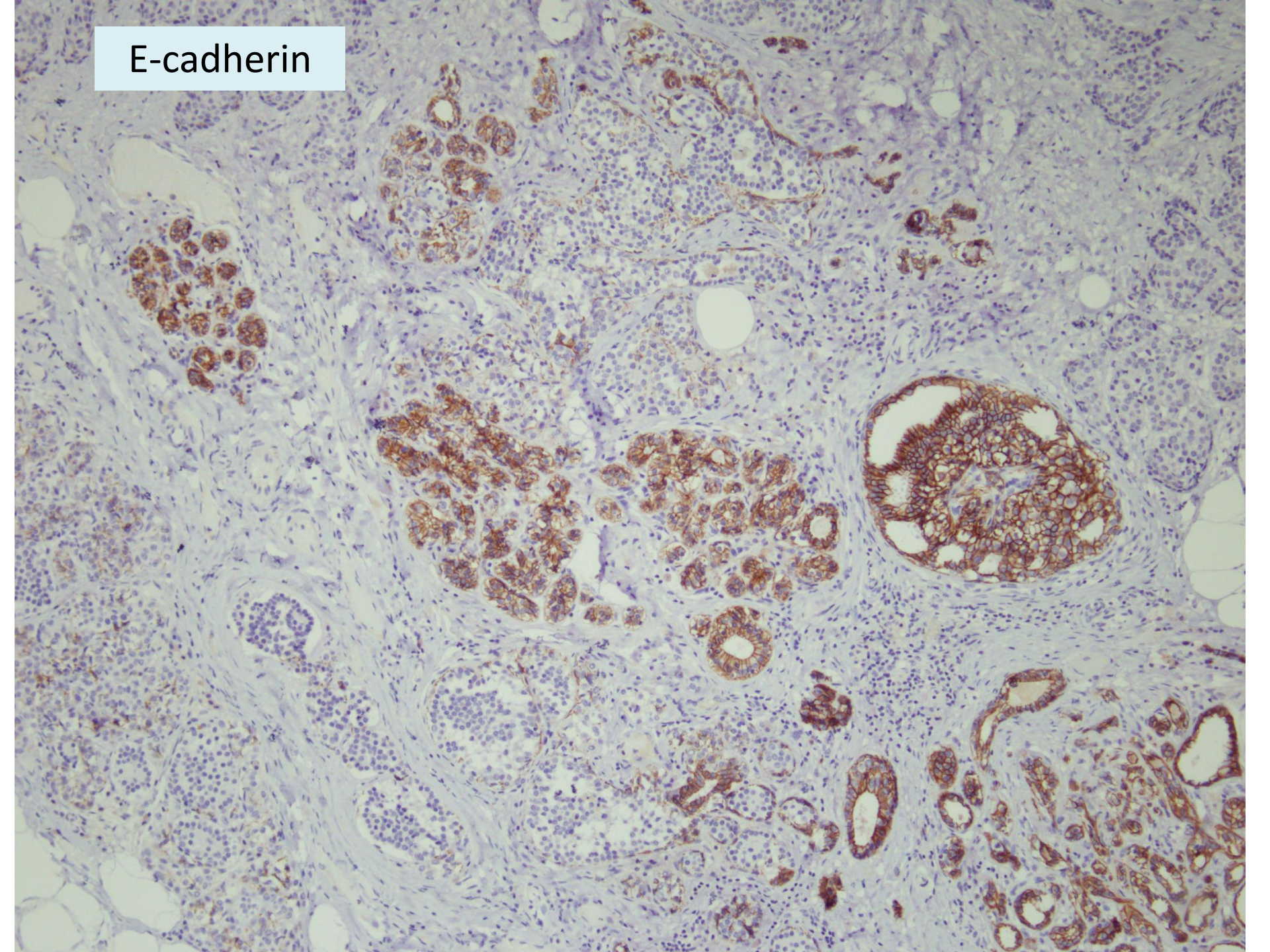
E-cadherin



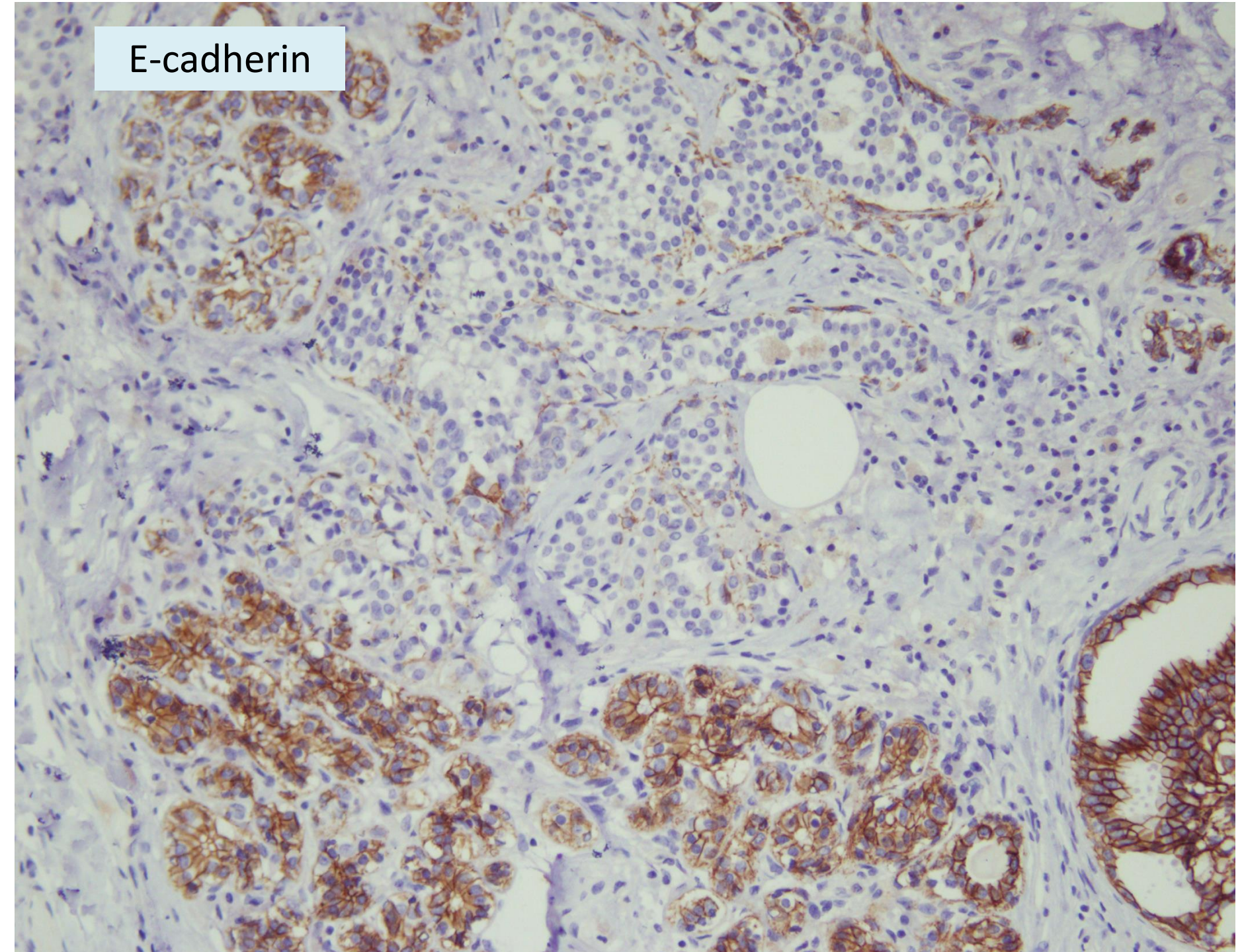
E-cadherin



E-cadherin

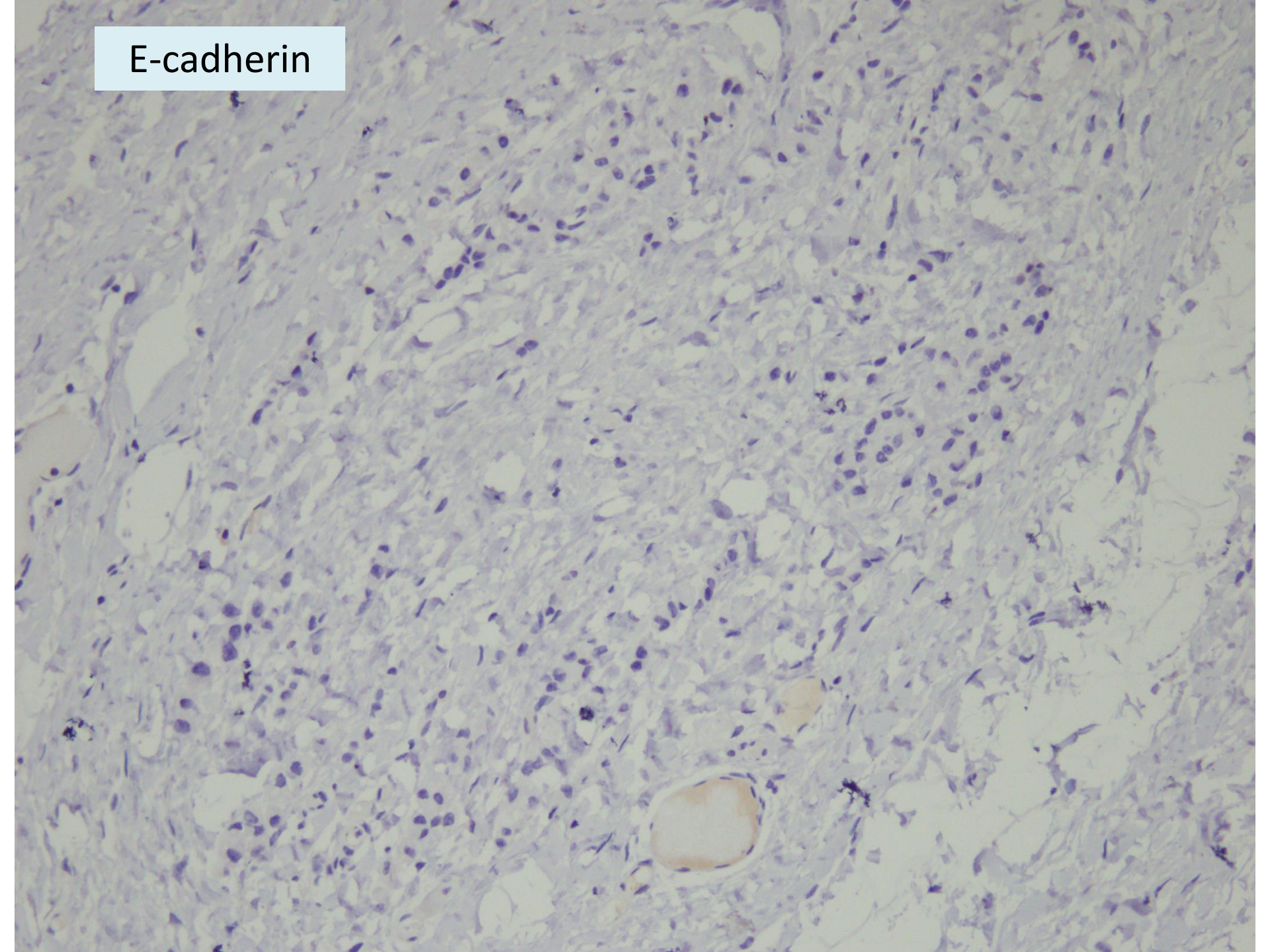


E-cadherin





E-cadherin



Right breast, wide excision:

*Mixed invasive ductal and lobular (pleomorphic) carcinoma, grade 2*



 Breast  
Pathology  
Course 2014

