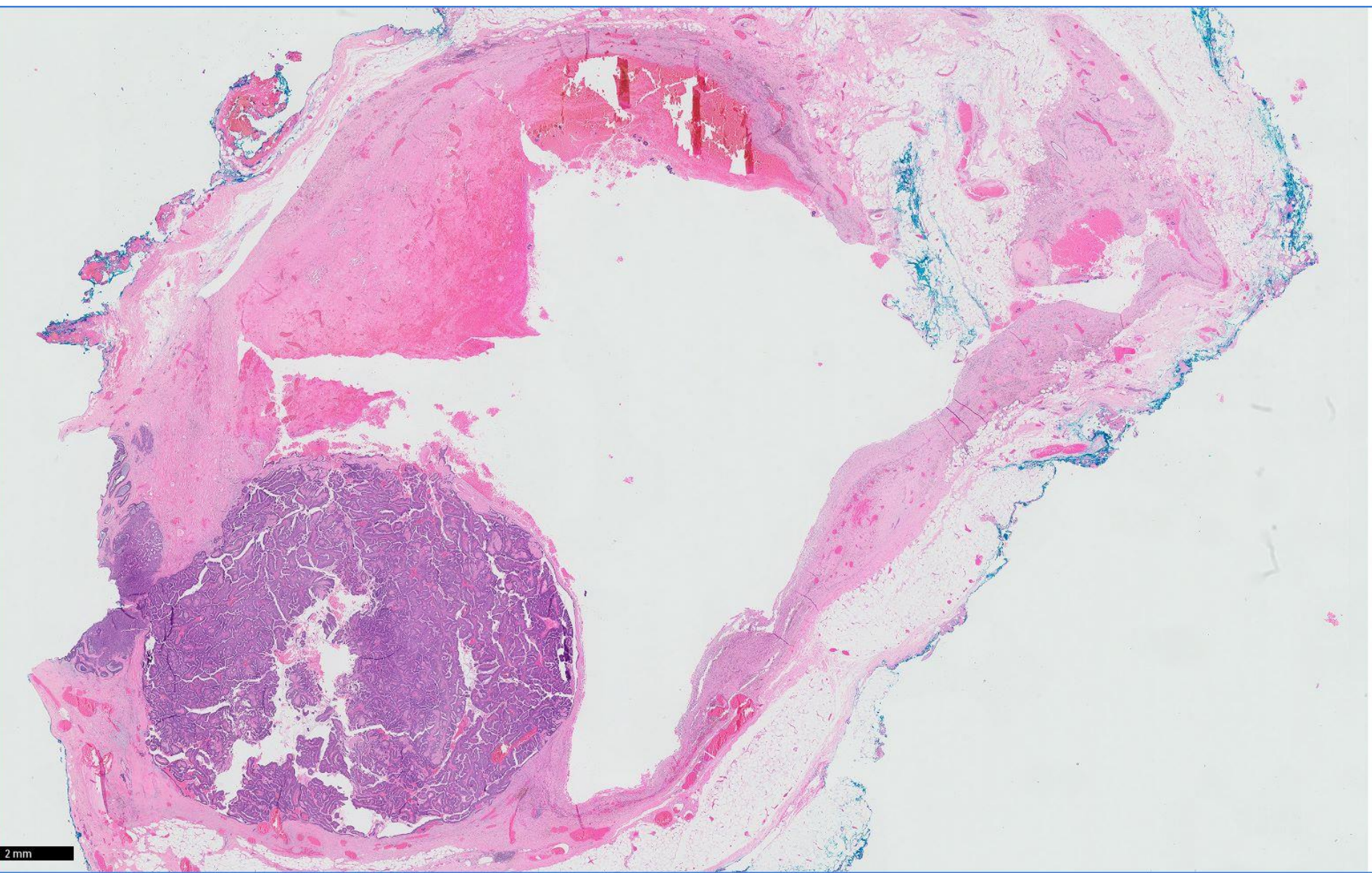


# *Case 9*

82 year old woman with a left breast lump.  
Excision biopsy.

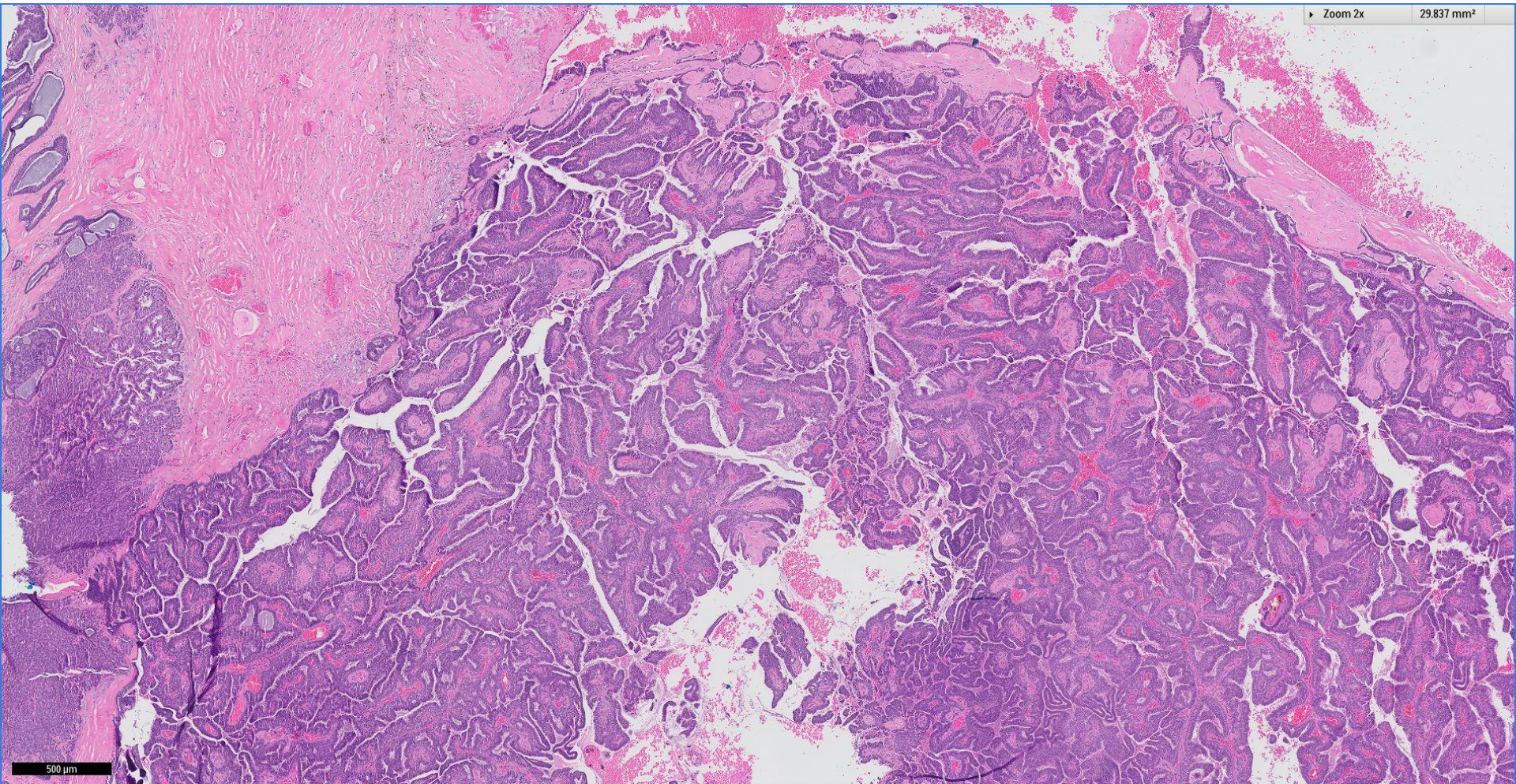




2 mm

Zoom 2x

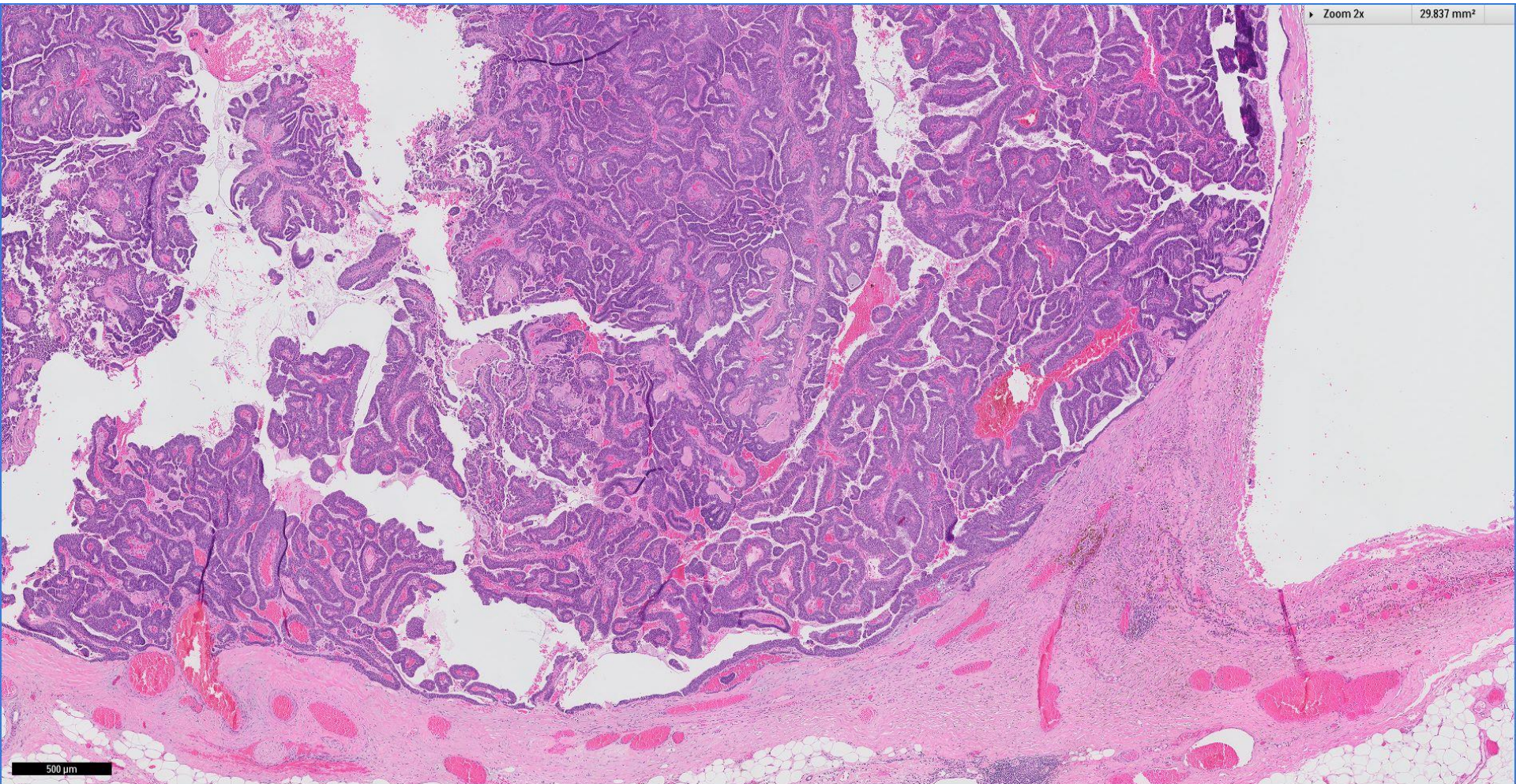
29.837 mm<sup>2</sup>



500 μm

Zoom 2x

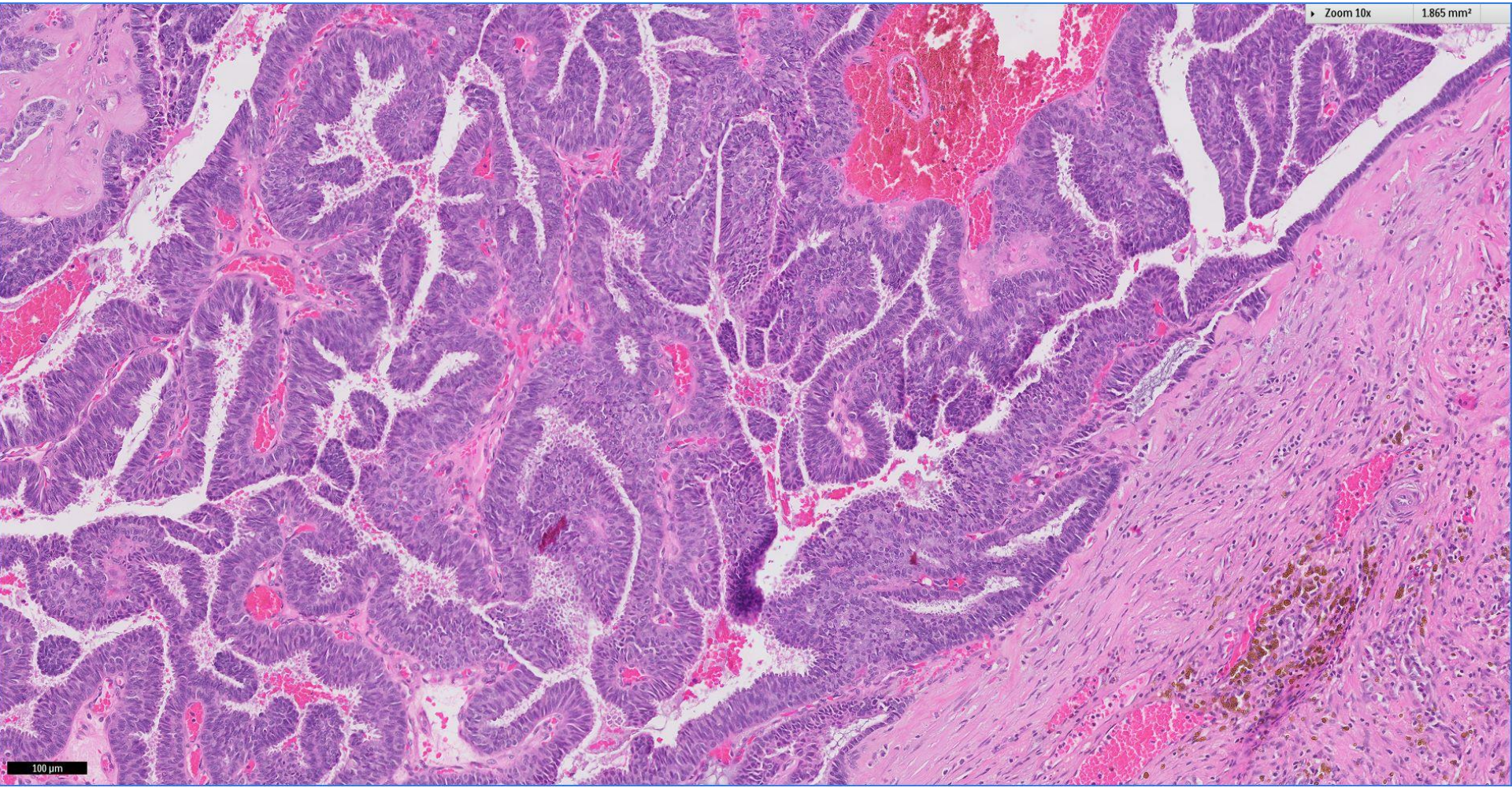
29.837 mm<sup>2</sup>



500  $\mu$ m

Zoom 10x

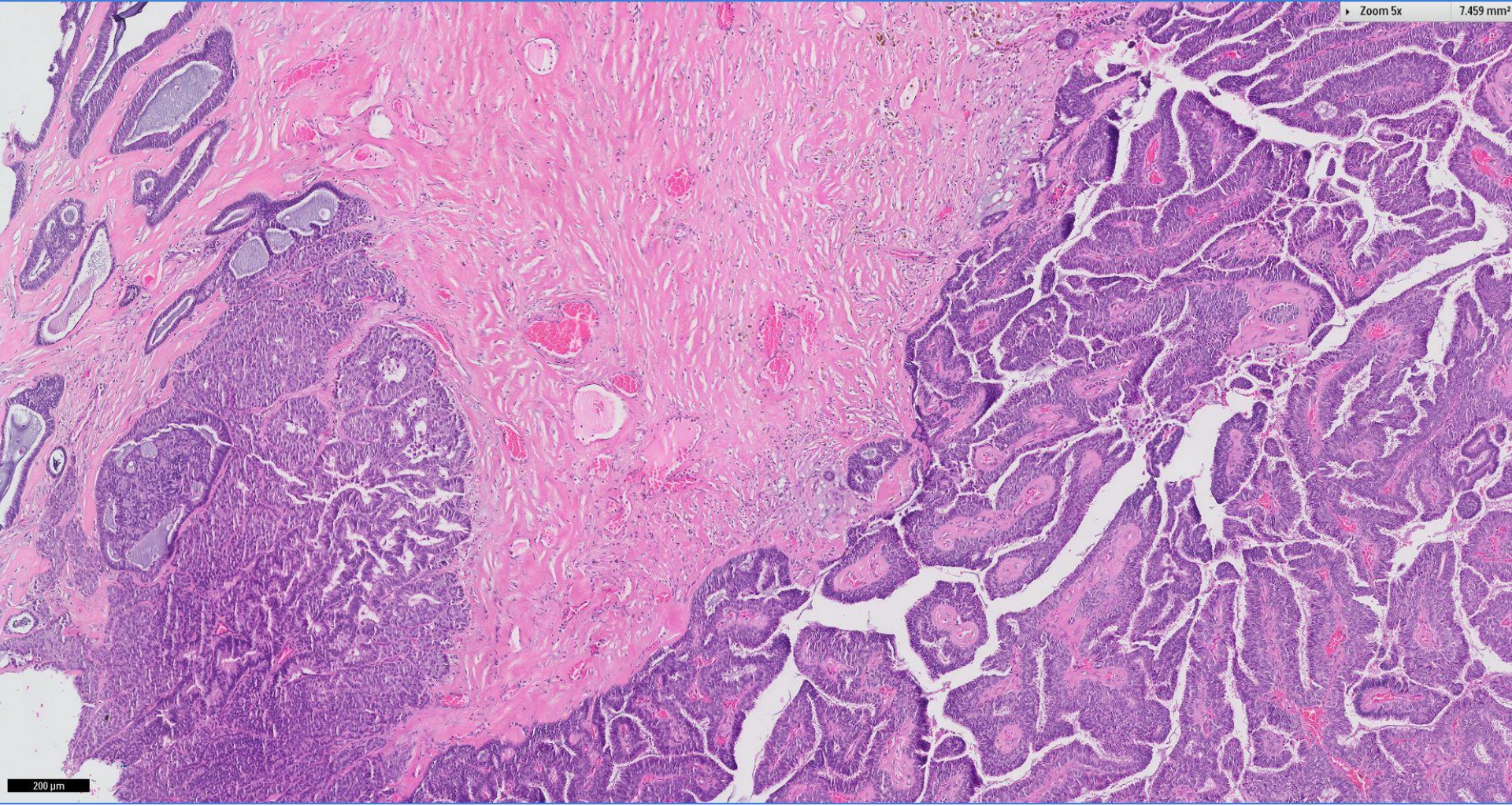
1.865 mm<sup>2</sup>



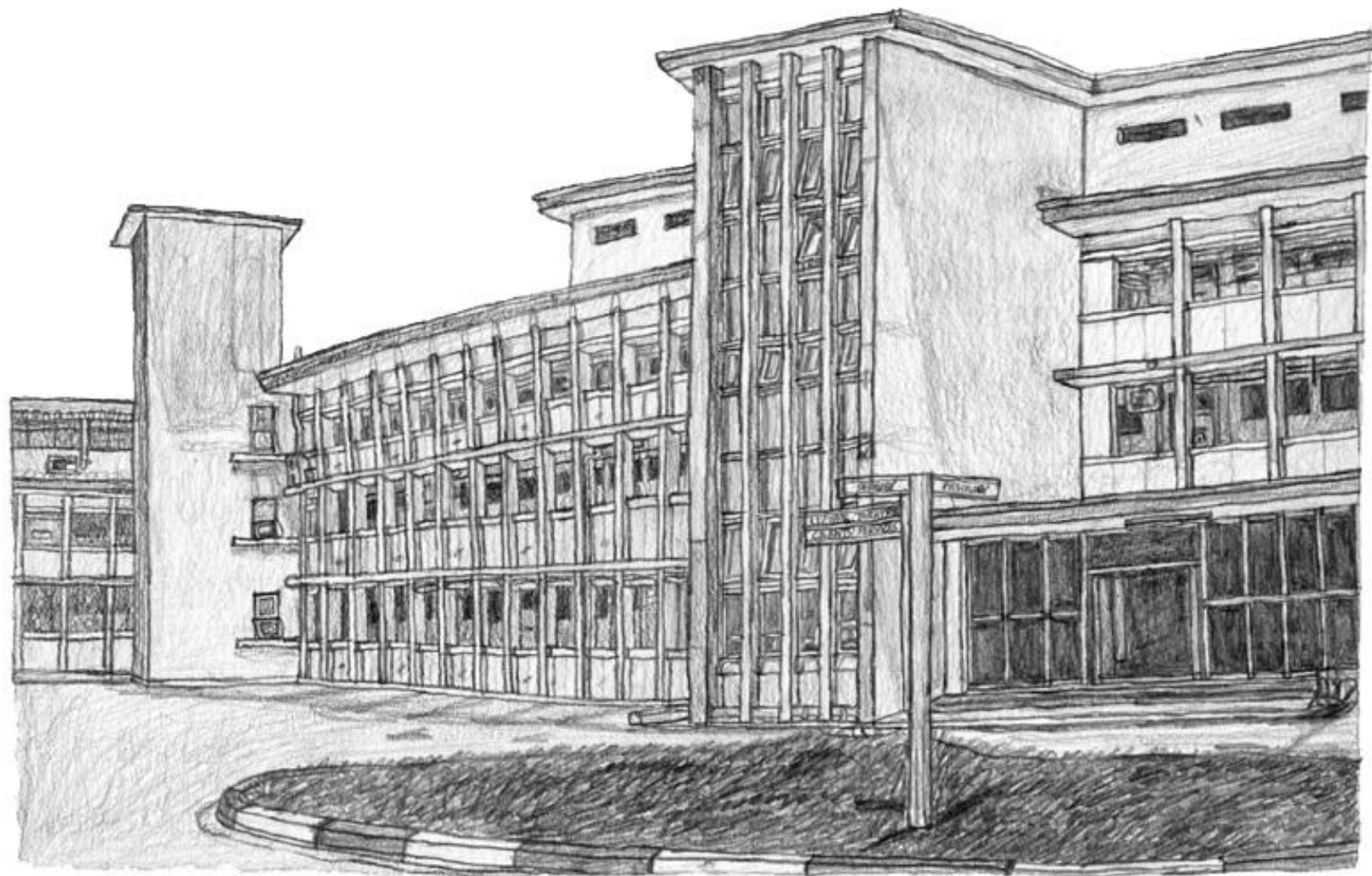
100  $\mu$ m

Zoom 5x

7.459 mm<sup>2</sup>



200  $\mu$ m



"DEPARTMENT OF PATHOLOGY  
SINGAPORE GENERAL HOSPITAL"

27.04.2014

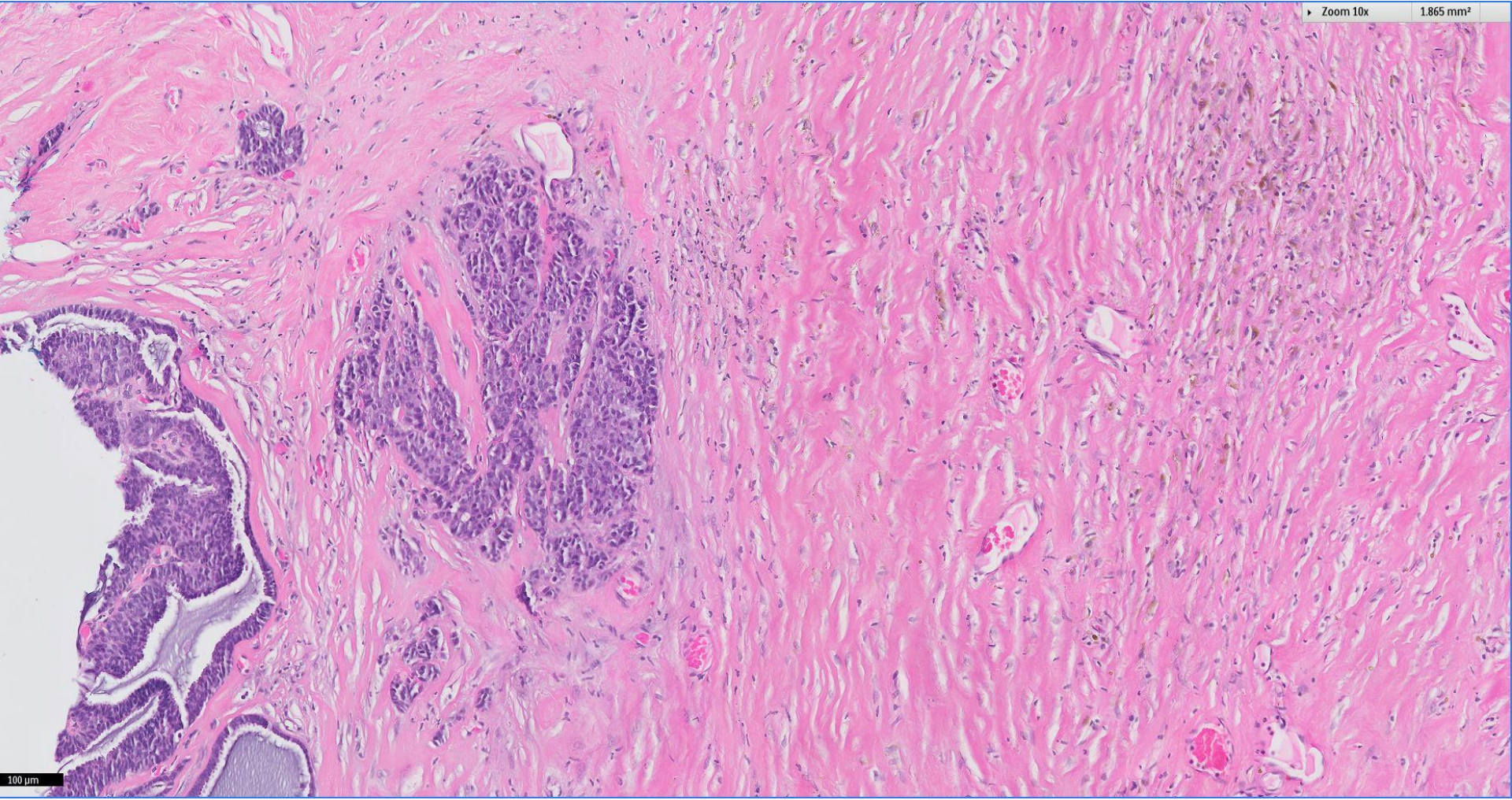
He





Zoom 10x

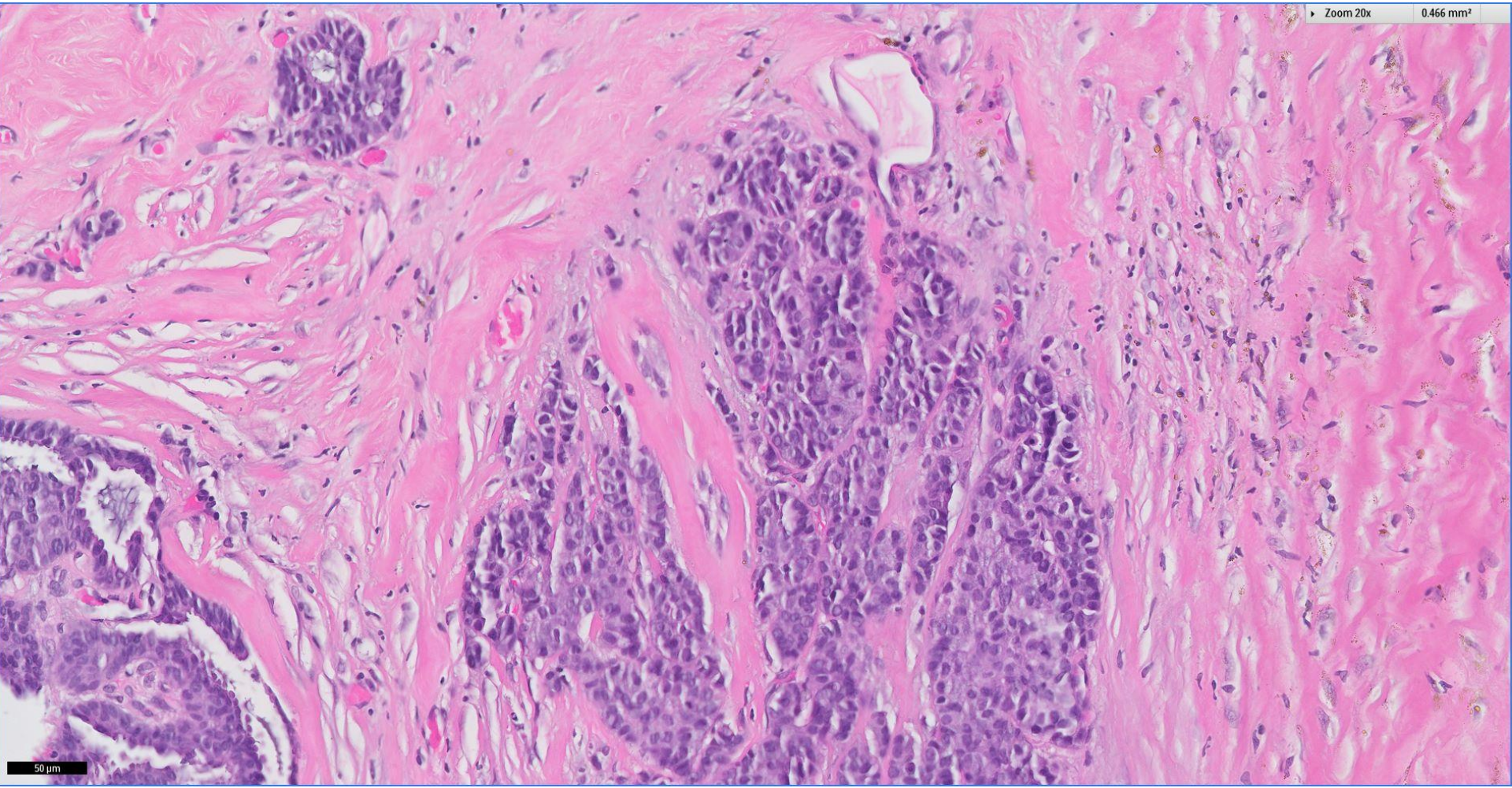
1.865 mm<sup>2</sup>



100  $\mu$ m

Zoom 20x

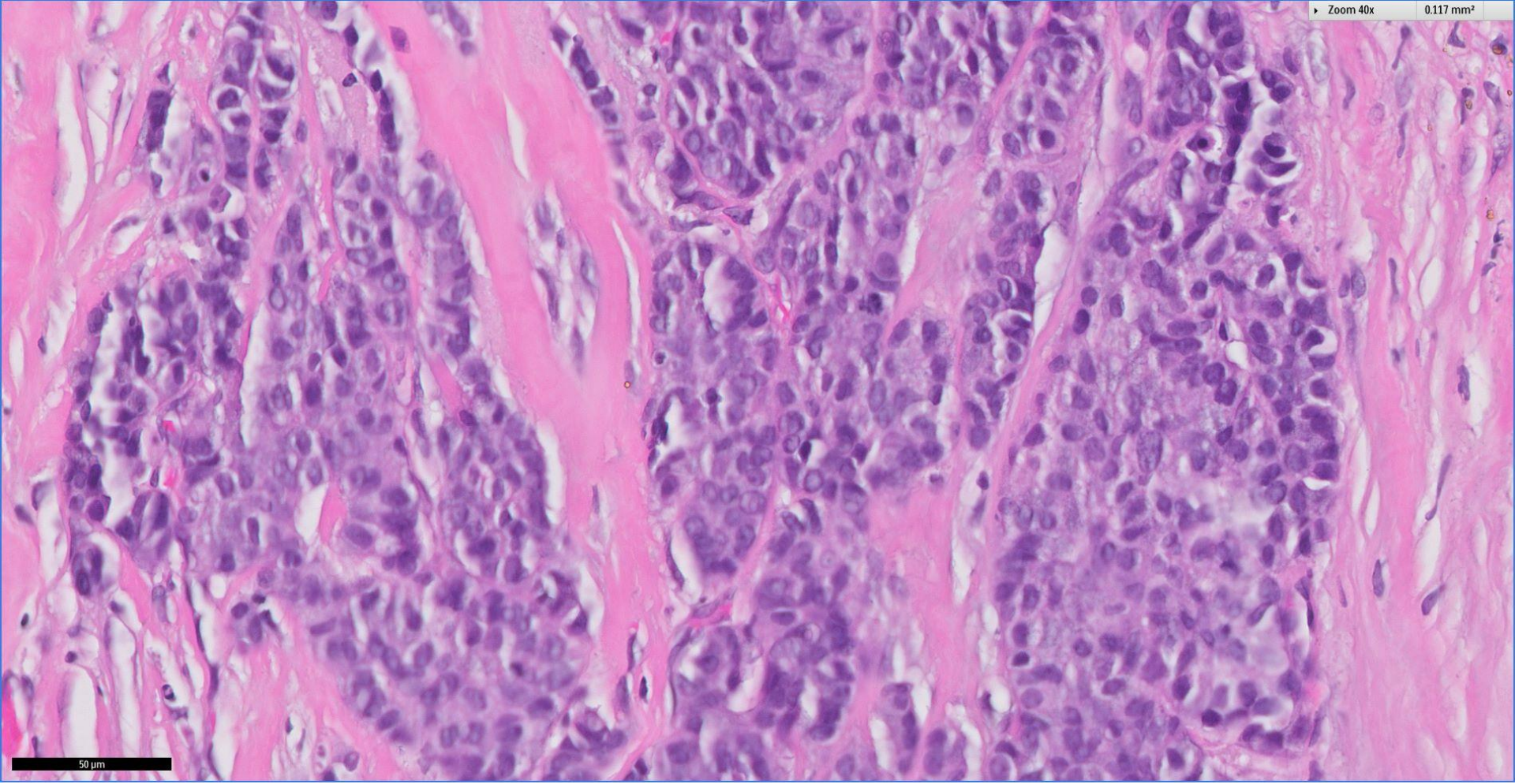
0.466 mm<sup>2</sup>



50 μm

Zoom 40x

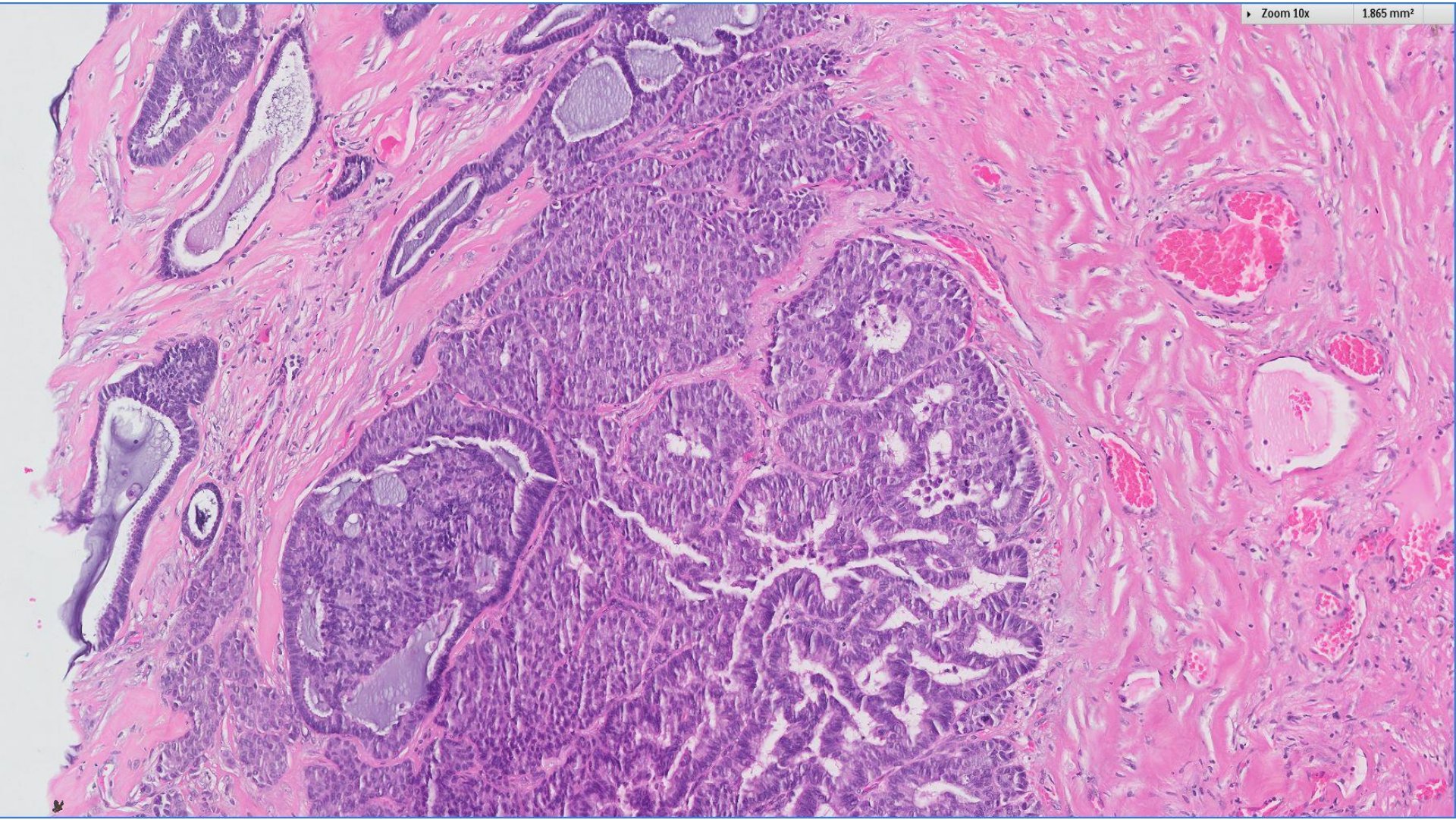
0.117 mm<sup>2</sup>



50 μm

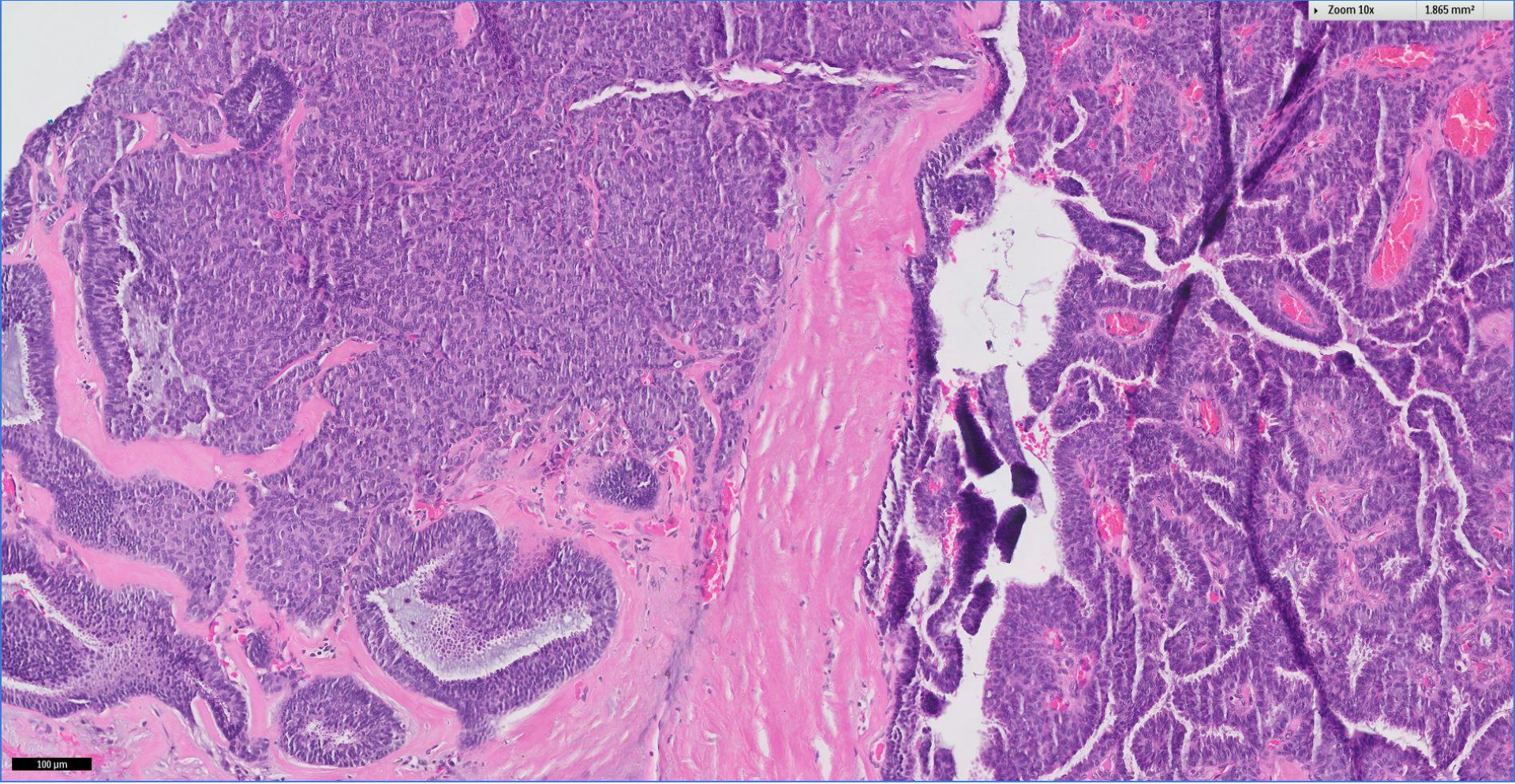
Zoom 10x

1.865 mm<sup>2</sup>



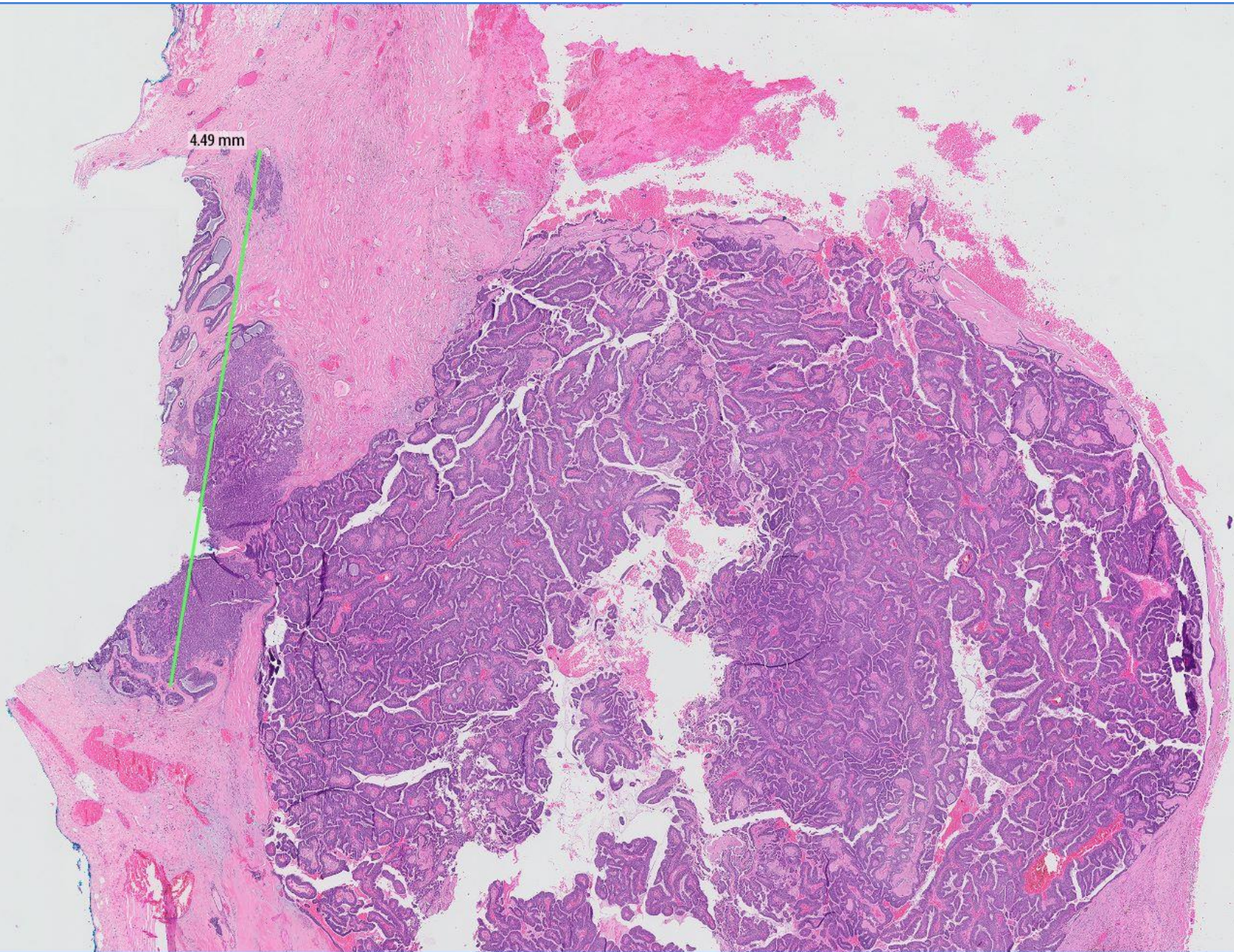
Zoom 10x

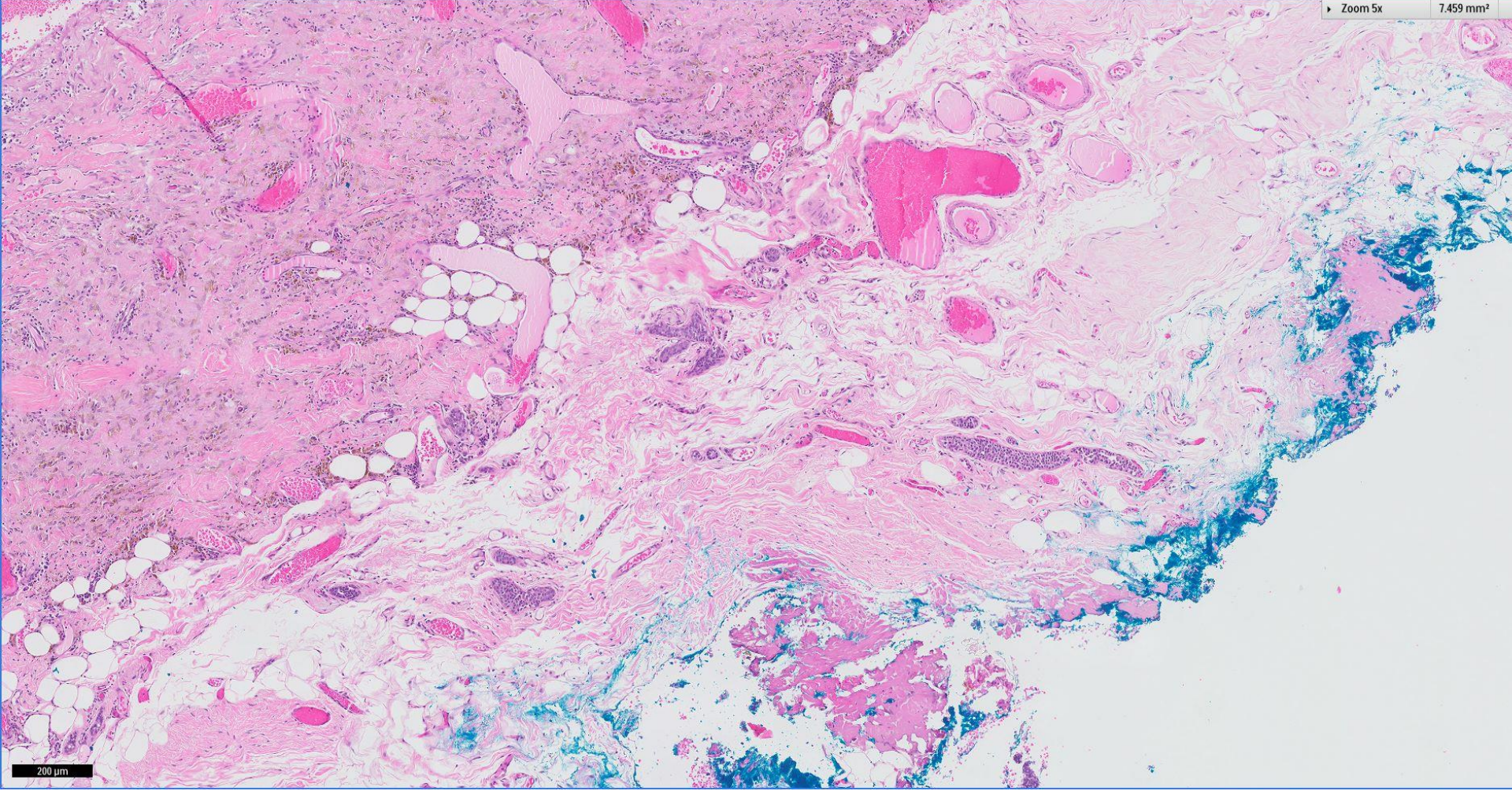
1.865 mm<sup>2</sup>

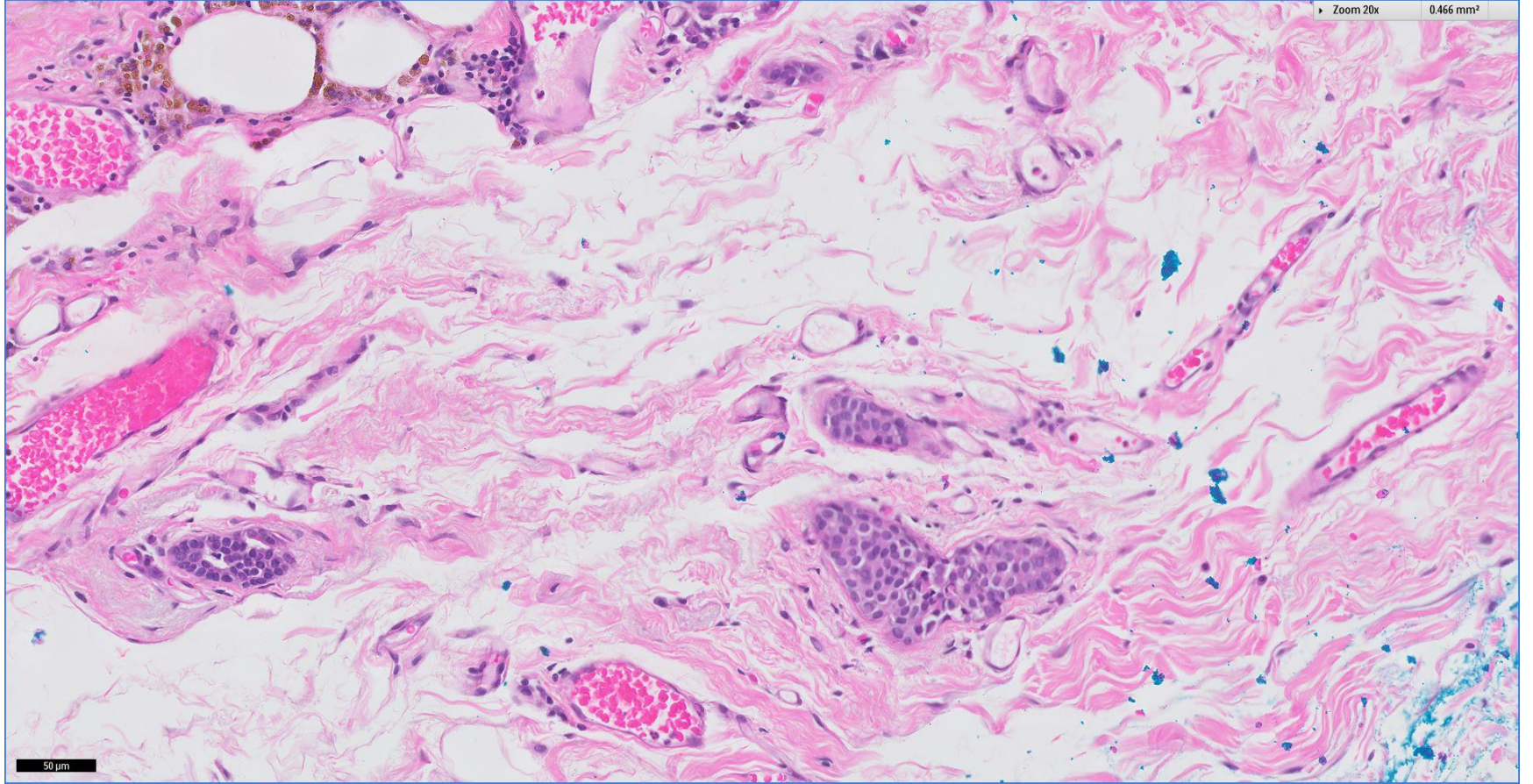


100 μm

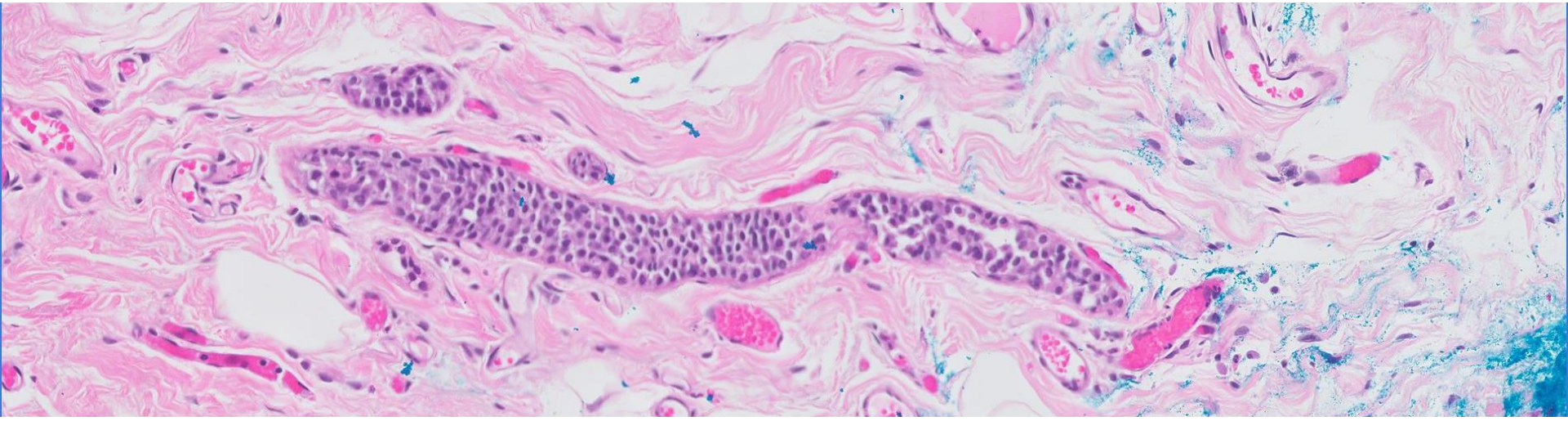
4.49 mm





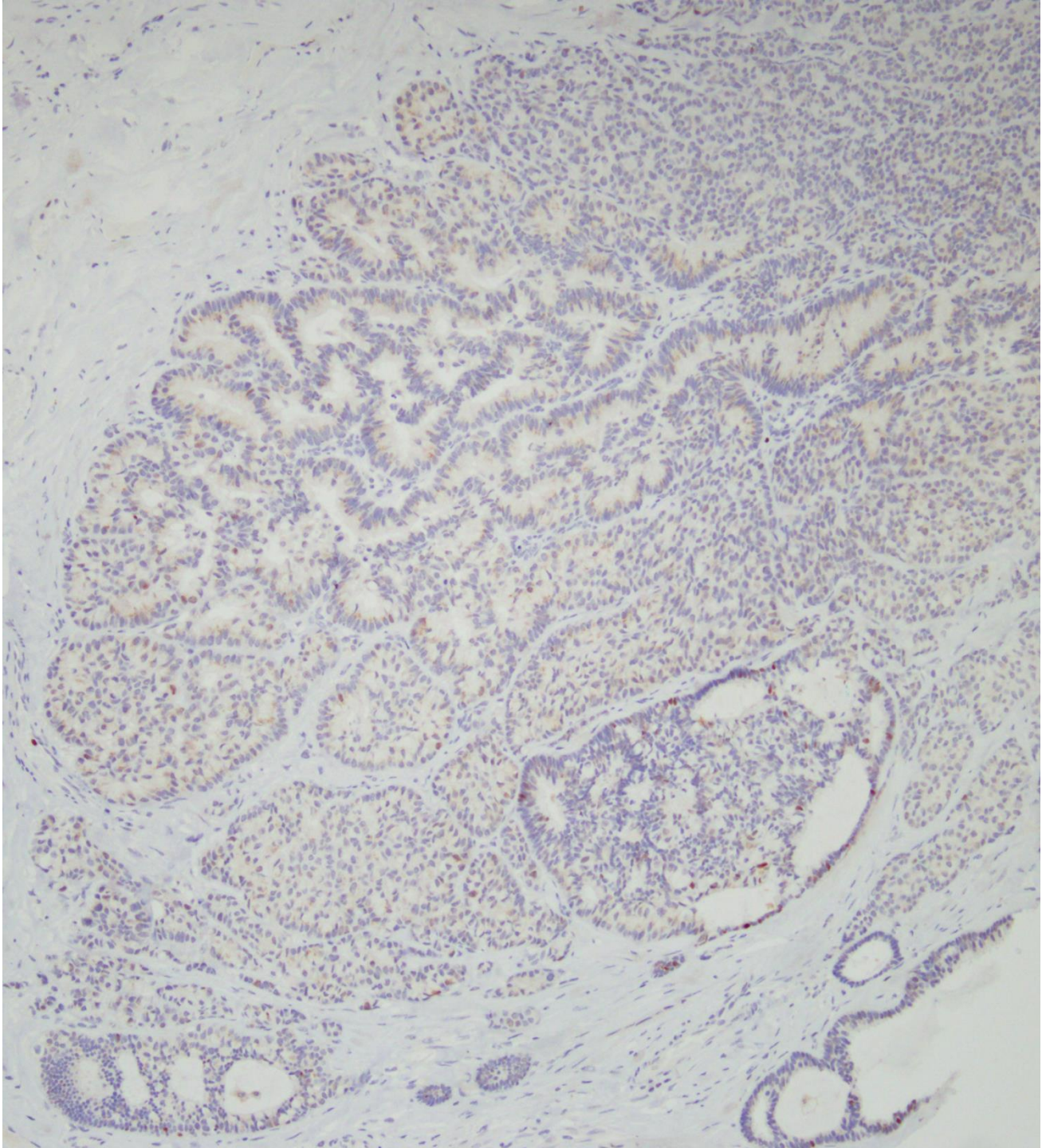


50 µm

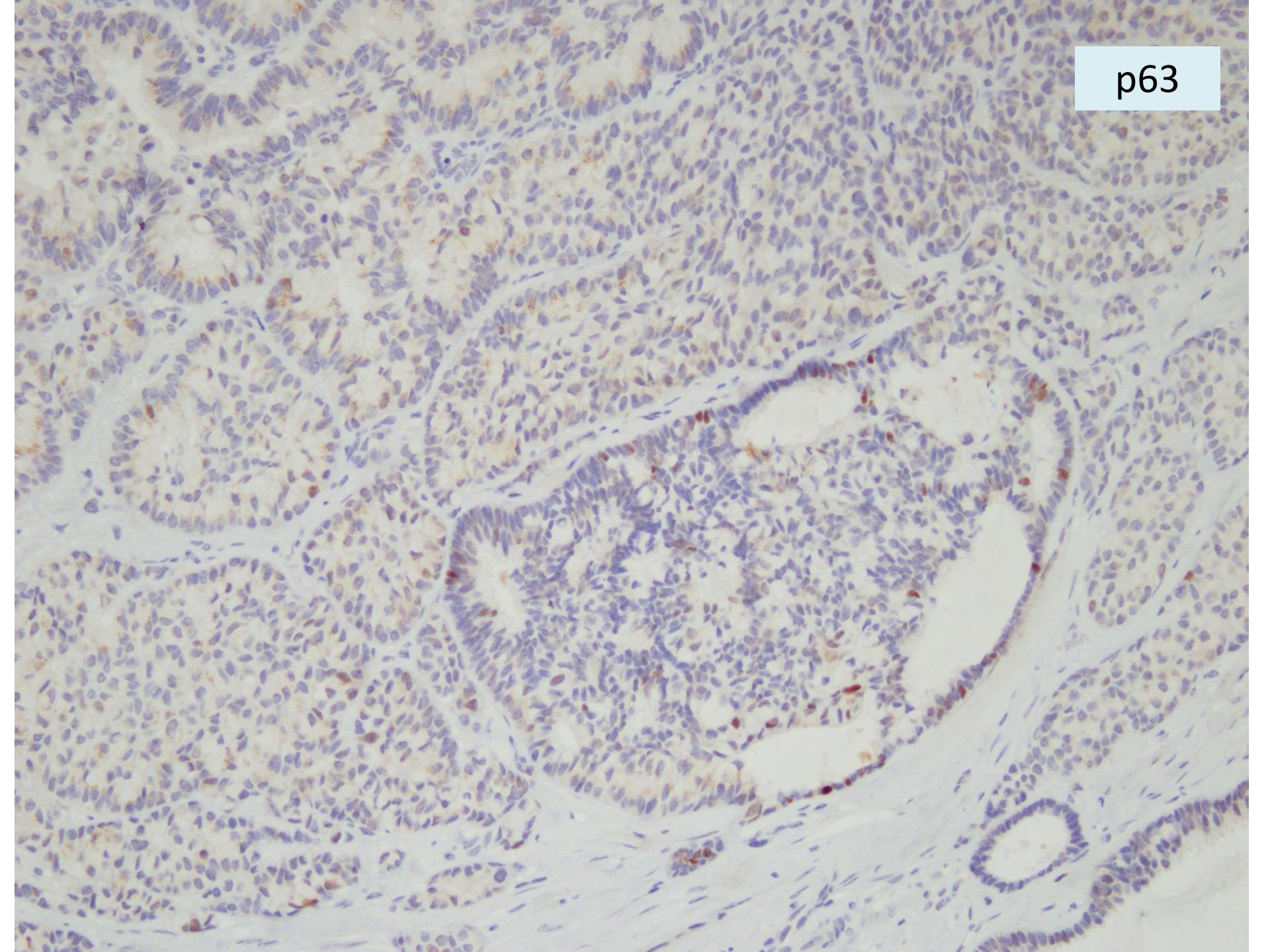




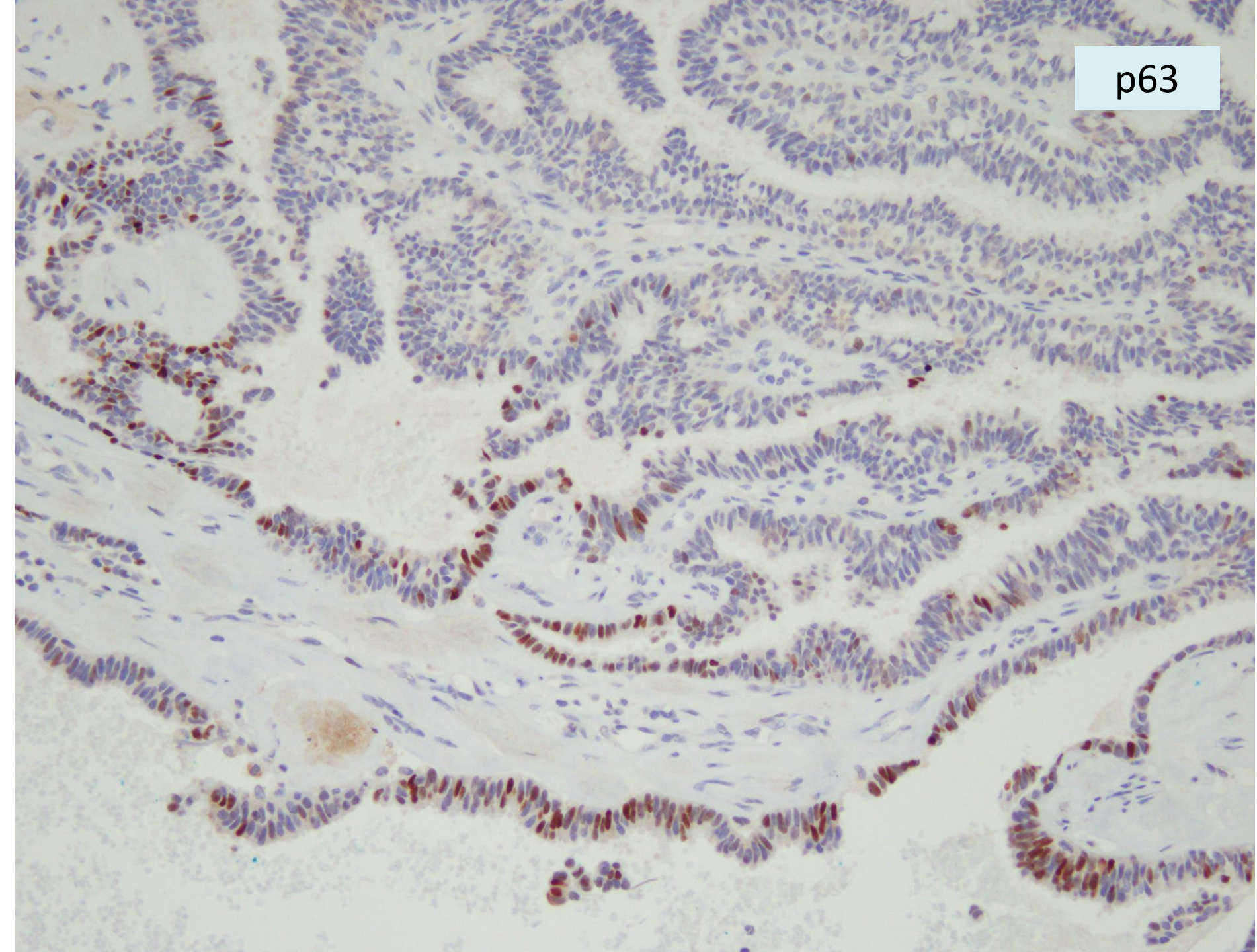
p63



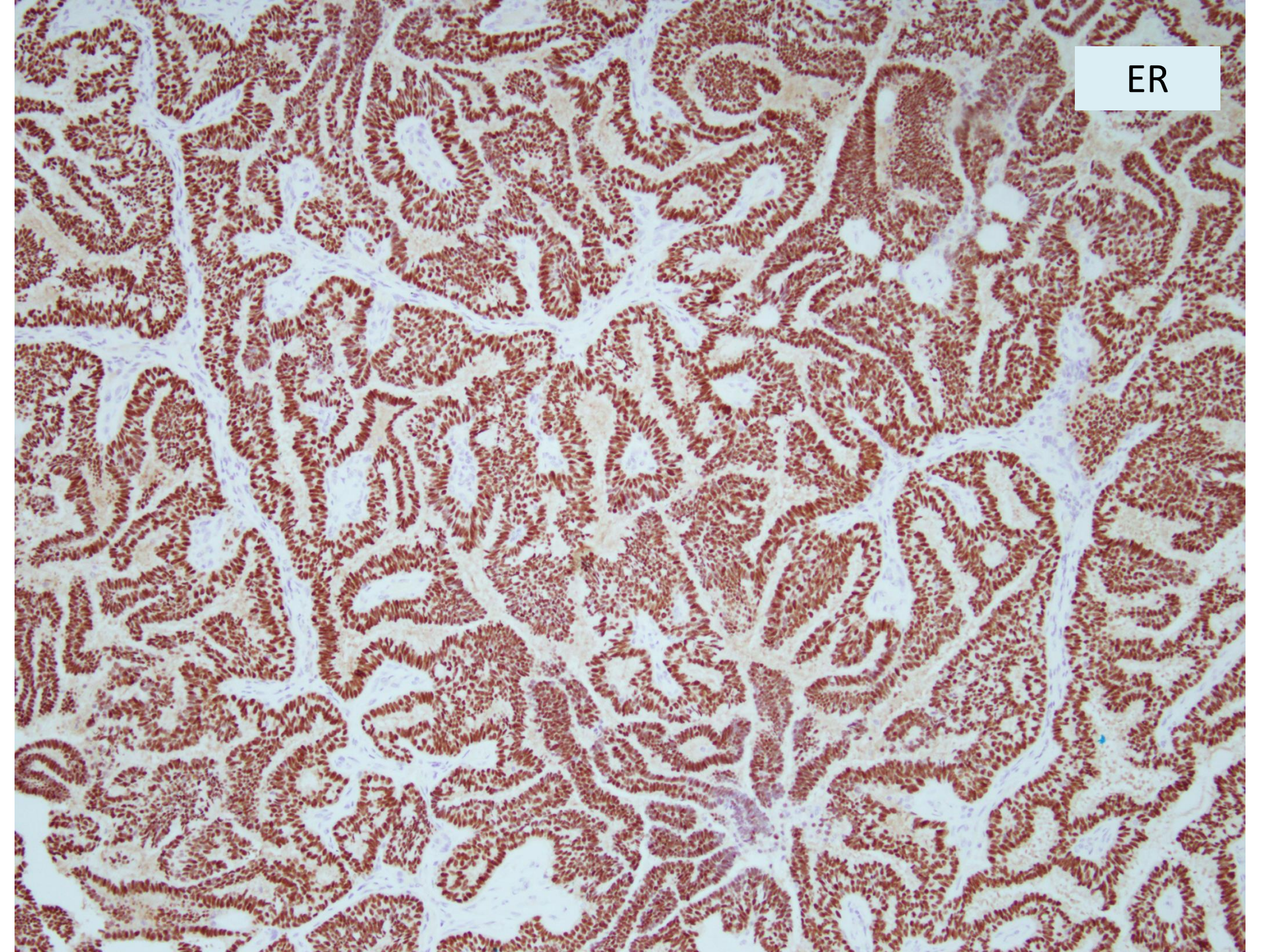
p63



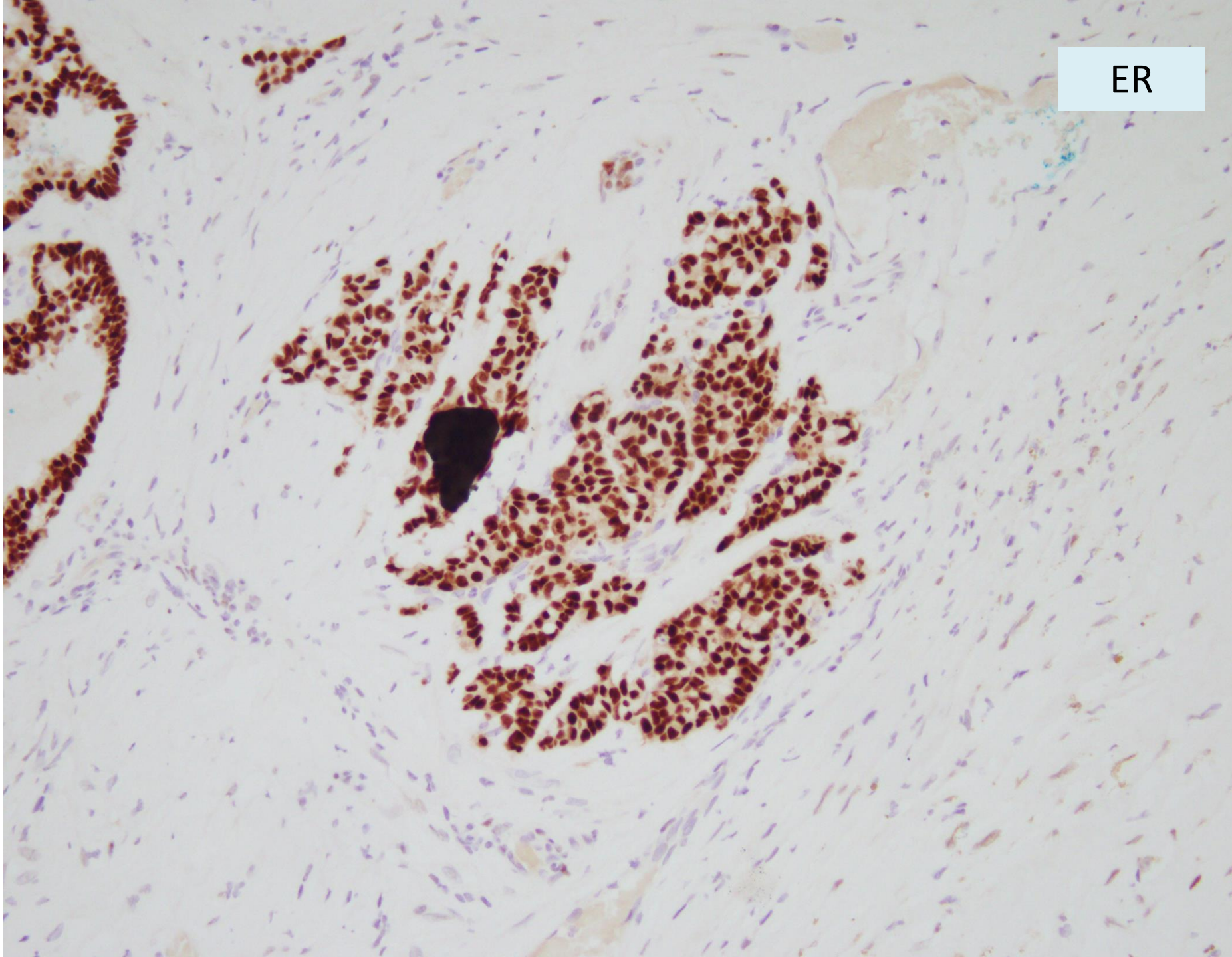
p63



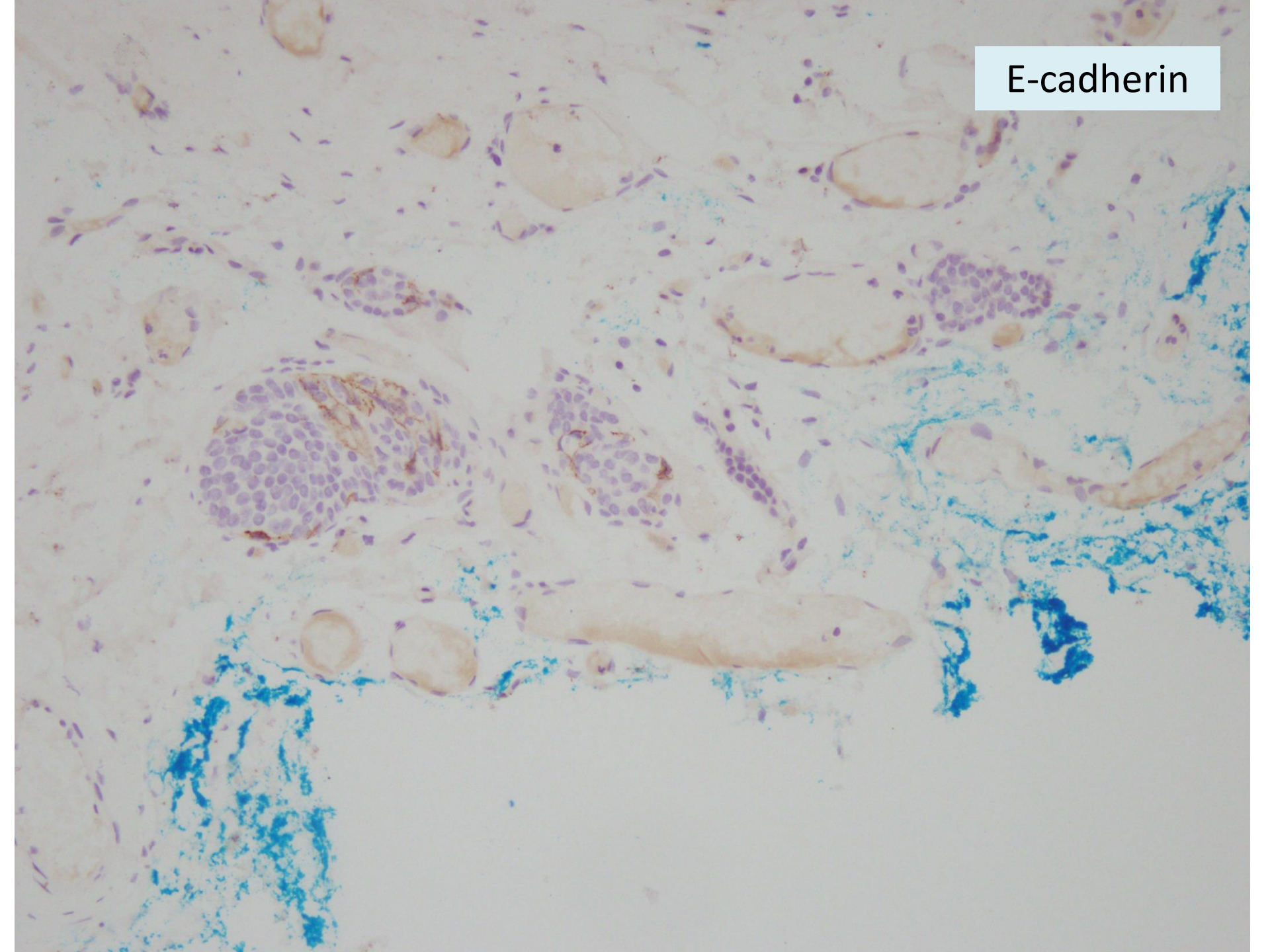
ER



ER



E-cadherin



Left breast lump, excision biopsy:

*Invasive ductal carcinoma, grade 1, 4.5mm*

*ER positive, PR positive*

*Encapsulated papillary carcinoma*

*Focal atypical lobular hyperplasia*



 Breast  
Pathology  
Course 2014

