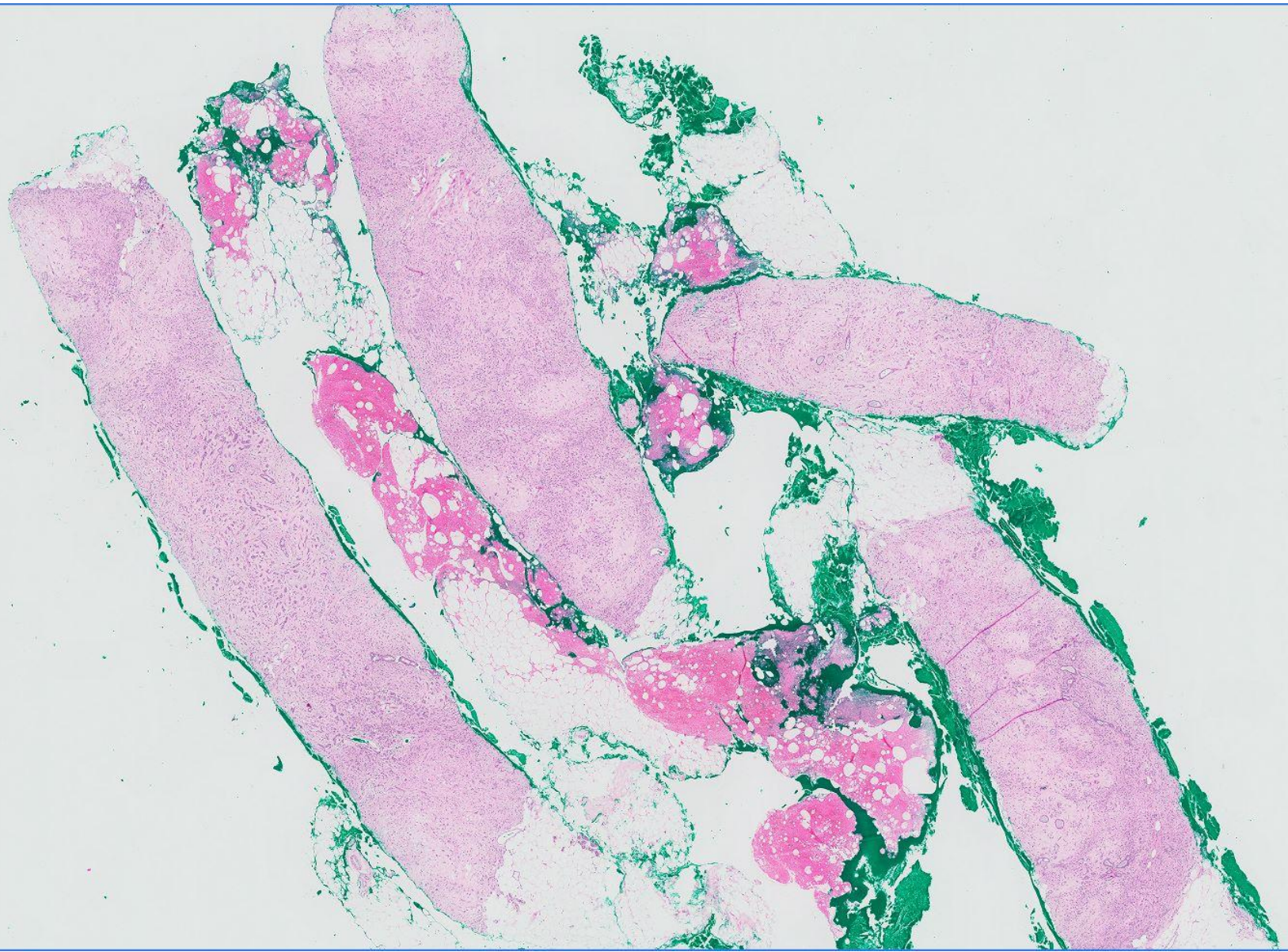


Case 4

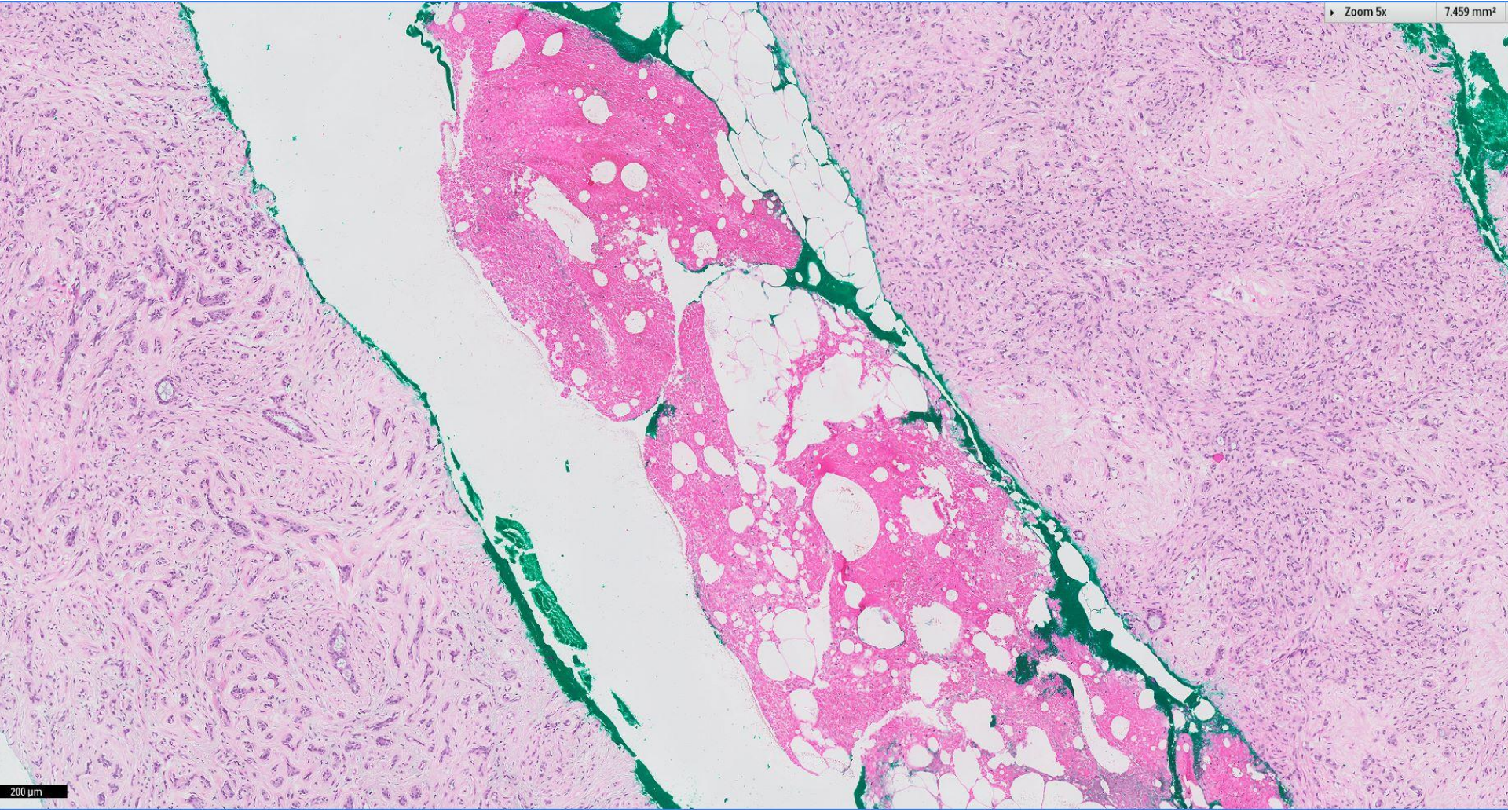
51 year old woman underwent mammographic screening that discovered a right breast 0900 nodule, for which stereotactic trucut biopsy was performed.





Zoom 5x

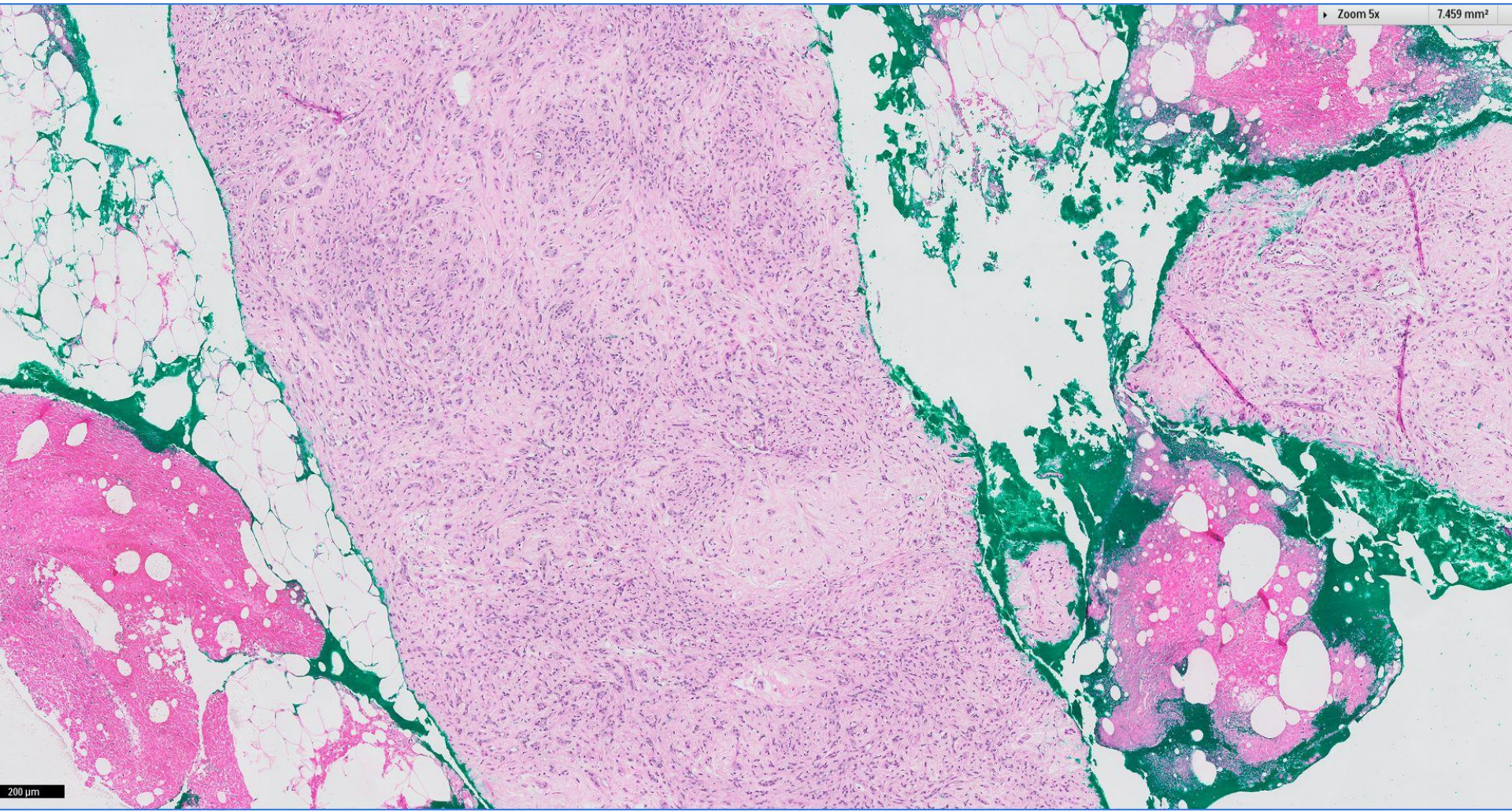
7.459 mm²



200 μm

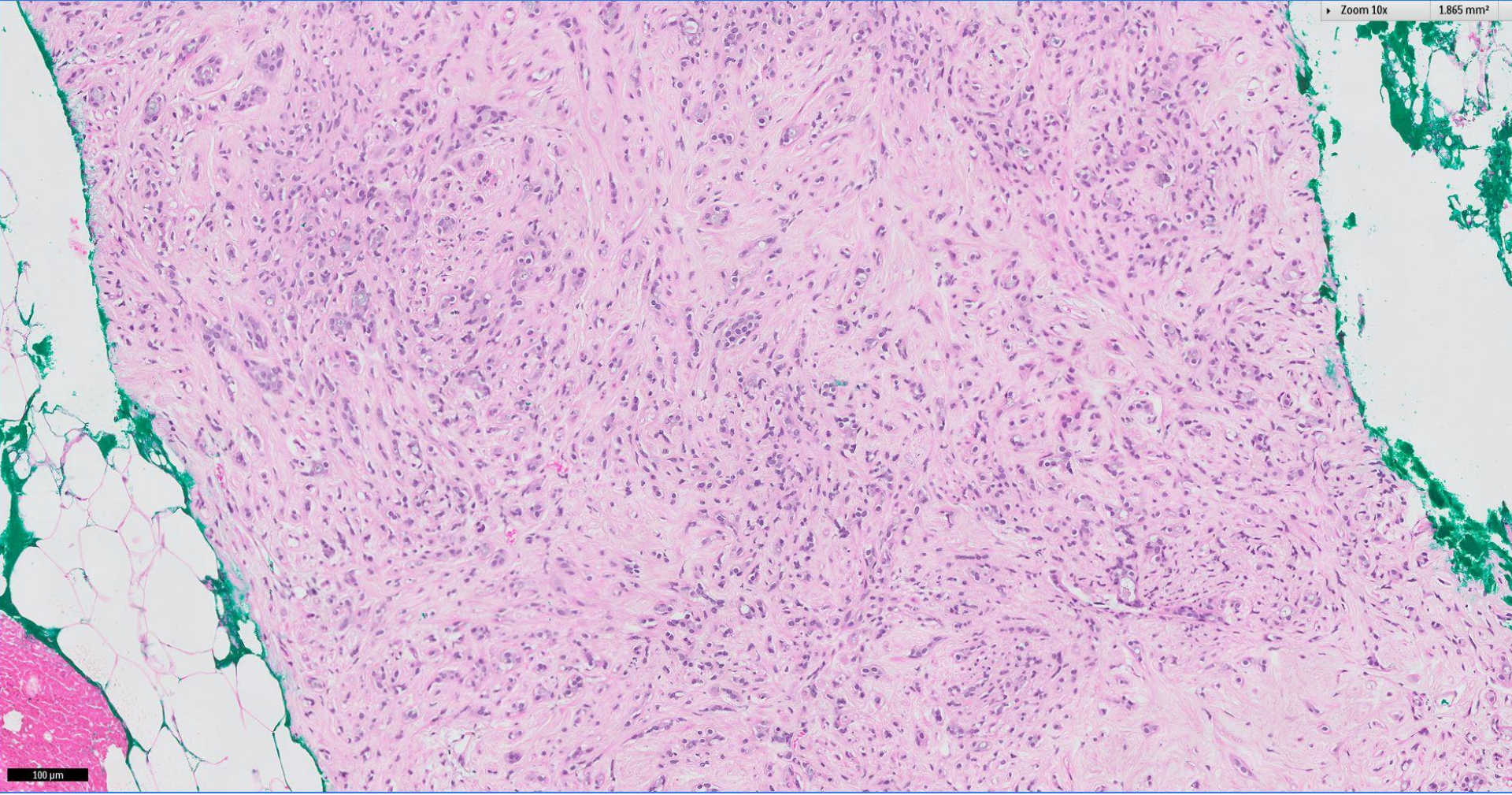
Zoom 5x

7.459 mm²



200 μm

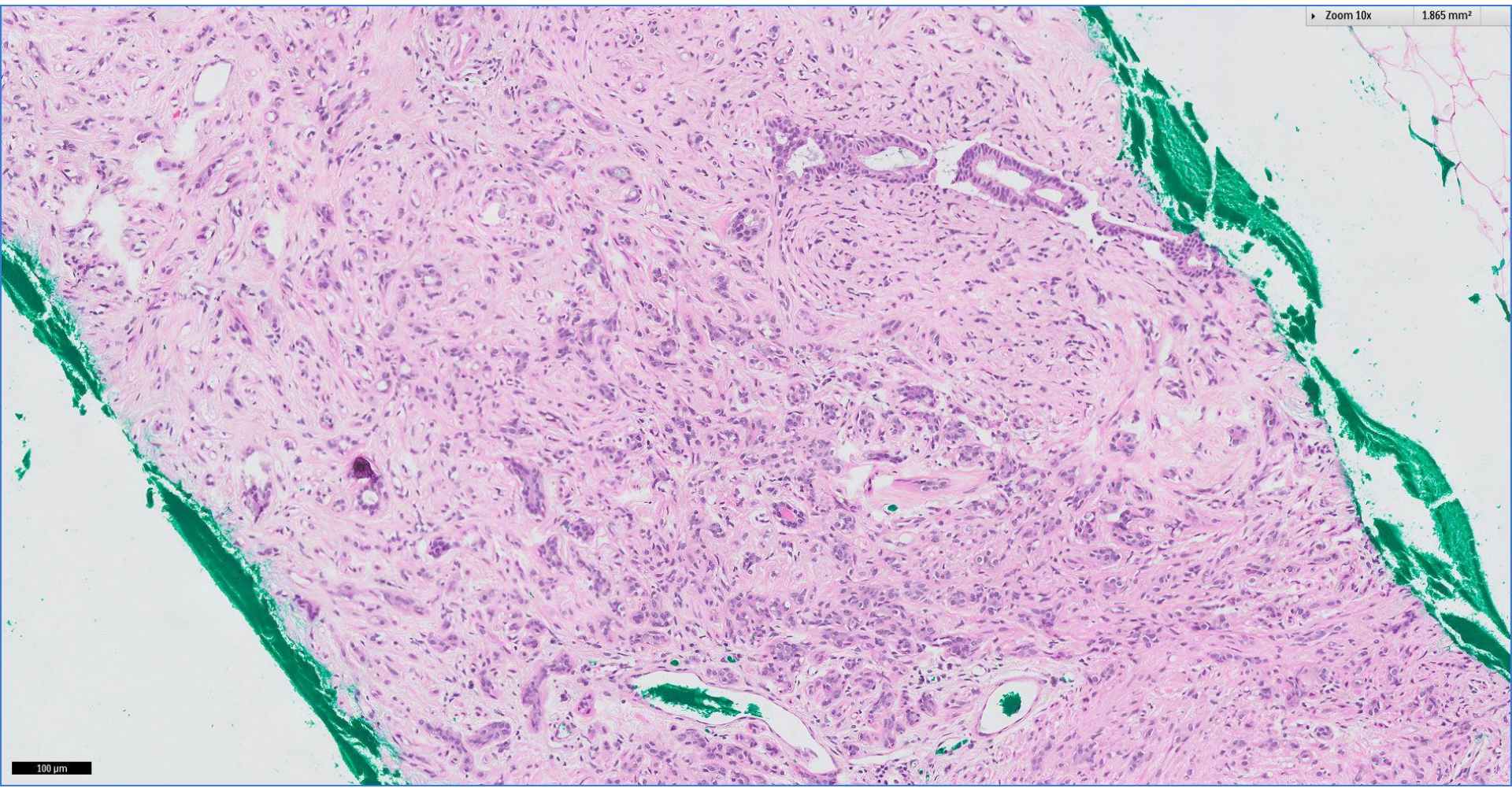
Zoom 10x 1.865 mm²



100 μm

Zoom 10x

1.865 mm²



100 μm



Offering comprehensive laboratory services

SGH CLINICAL LABORATORIES

Provide a wide range of laboratory services and capabilities to our range of clients

- Hematology
- Microbiology
- Immunology
- Molecular Biology
- Pathology
- Specialized Testing
- Reference Services
- Research & Development
- Quality Assurance
- Clinical Research
- Diagnostic Services
- Laboratory Information Systems
- Accredited Services

Specialty Services

- Hematology
- Microbiology
- Immunology
- Molecular Biology
- Pathology
- Specialized Testing
- Reference Services
- Research & Development
- Quality Assurance
- Clinical Research
- Diagnostic Services
- Laboratory Information Systems
- Accredited Services

Waging war on deadly enemies

SGH CLINICAL LABORATORIES

Investigating disease, identifying germs that cause illness and determining how to best care for patients

Over 1000 tests, 24/7/365. Our services are available to our patients and staff. We are committed to providing the best care possible for our patients and staff.

How to fight deadly enemies

- Hematology
- Microbiology
- Immunology
- Molecular Biology
- Pathology
- Specialized Testing
- Reference Services
- Research & Development
- Quality Assurance
- Clinical Research
- Diagnostic Services
- Laboratory Information Systems
- Accredited Services

Growing strength in numbers

SGH CLINICAL LABORATORIES

State-of-the-art facilities
Timely and cost-effective services

- 1200 specimens processed per day
- 1200 specimens processed per day
- 1200 specimens processed per day
- 1200 specimens processed per day

Close collaborative team

- Over 100 staff working together
- 1200 specimens processed per day
- 1200 specimens processed per day
- 1200 specimens processed per day

Evolving medical diagnostics, 110 years on

SGH CLINICAL LABORATORIES

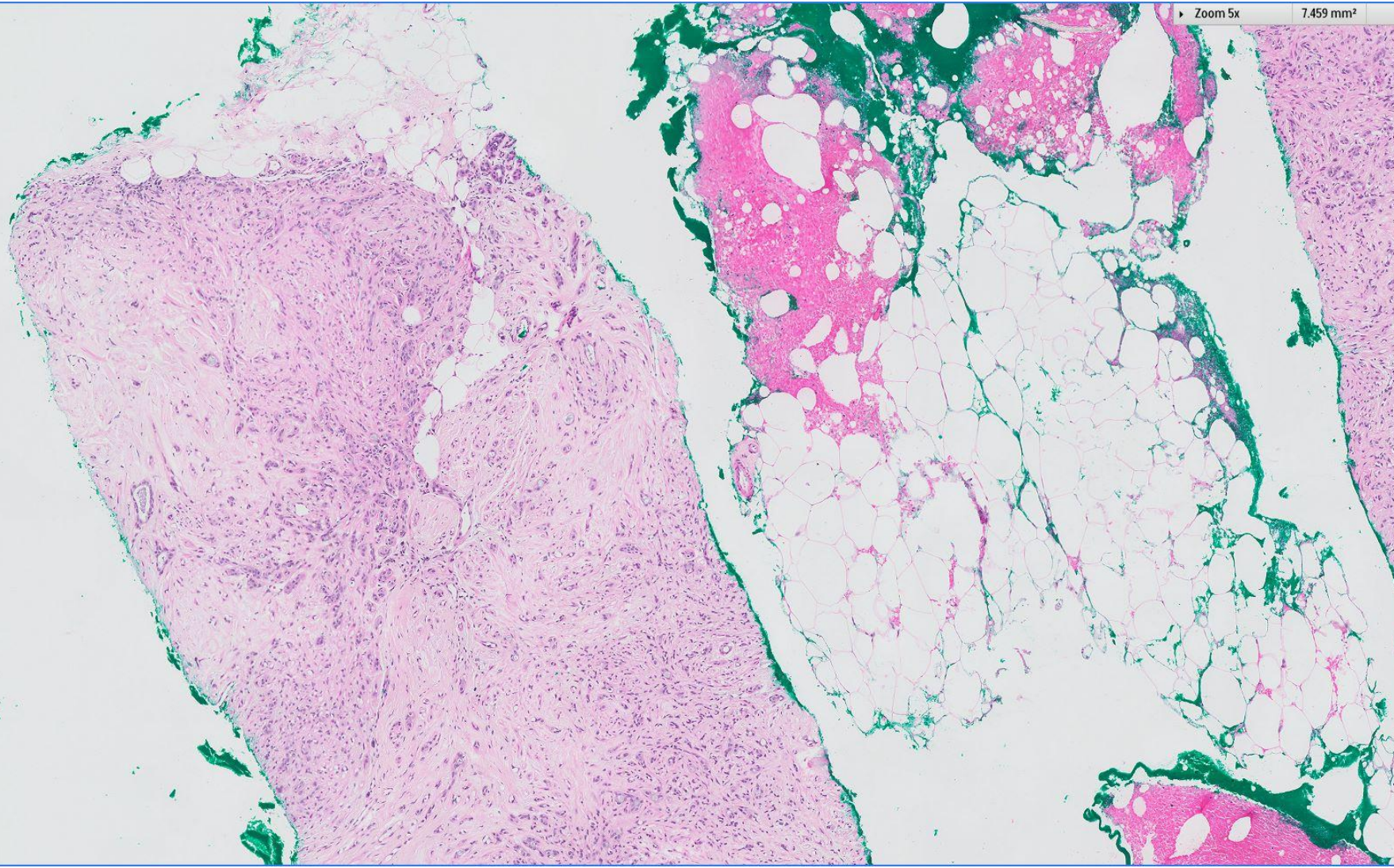
Over 110 years of medical diagnostics, we have evolved our services to meet the needs of our patients and staff. We are committed to providing the best care possible for our patients and staff.

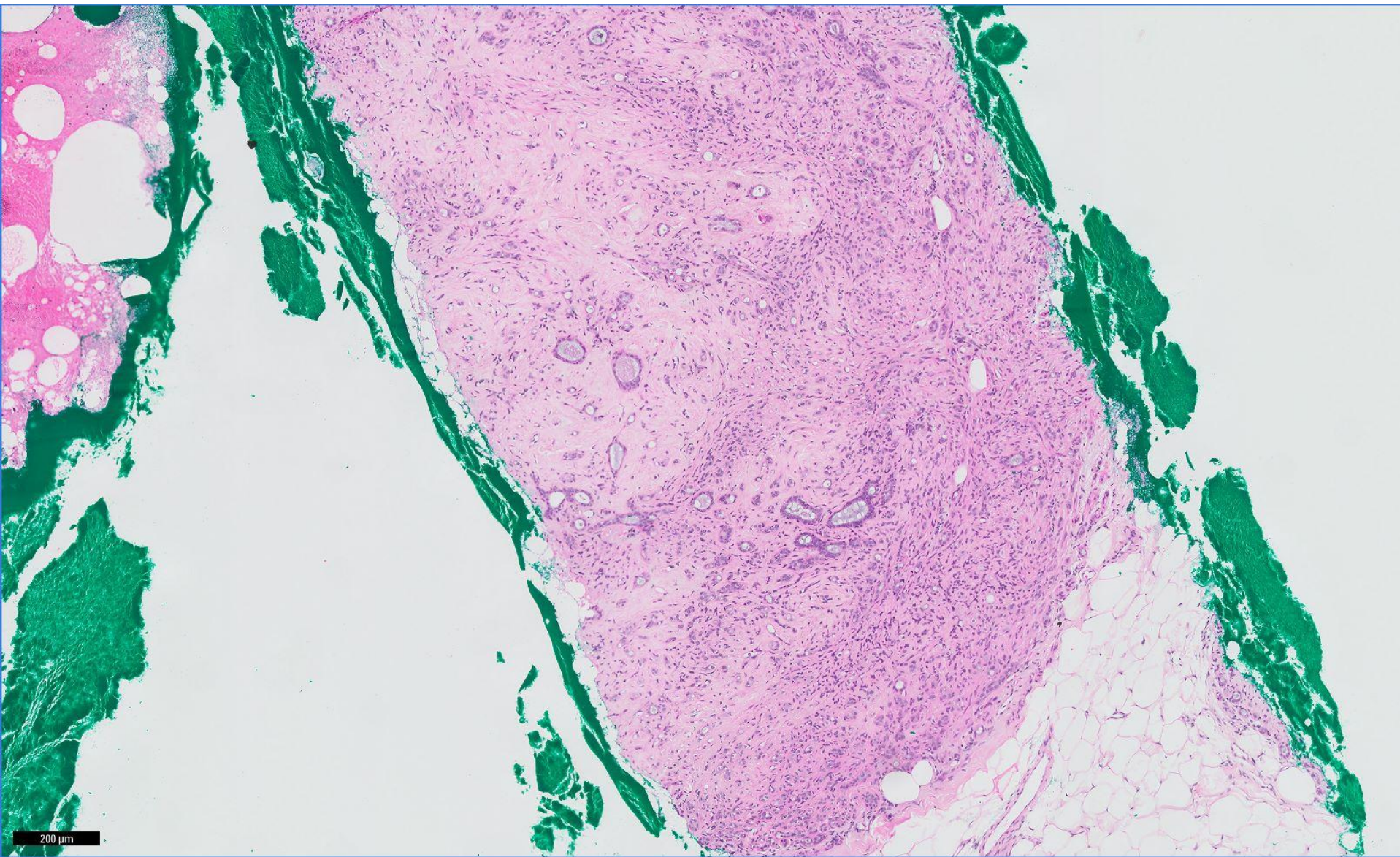
How to fight deadly enemies

- Hematology
- Microbiology
- Immunology
- Molecular Biology
- Pathology
- Specialized Testing
- Reference Services
- Research & Development
- Quality Assurance
- Clinical Research
- Diagnostic Services
- Laboratory Information Systems
- Accredited Services

Zoom 5x

7.459 mm²

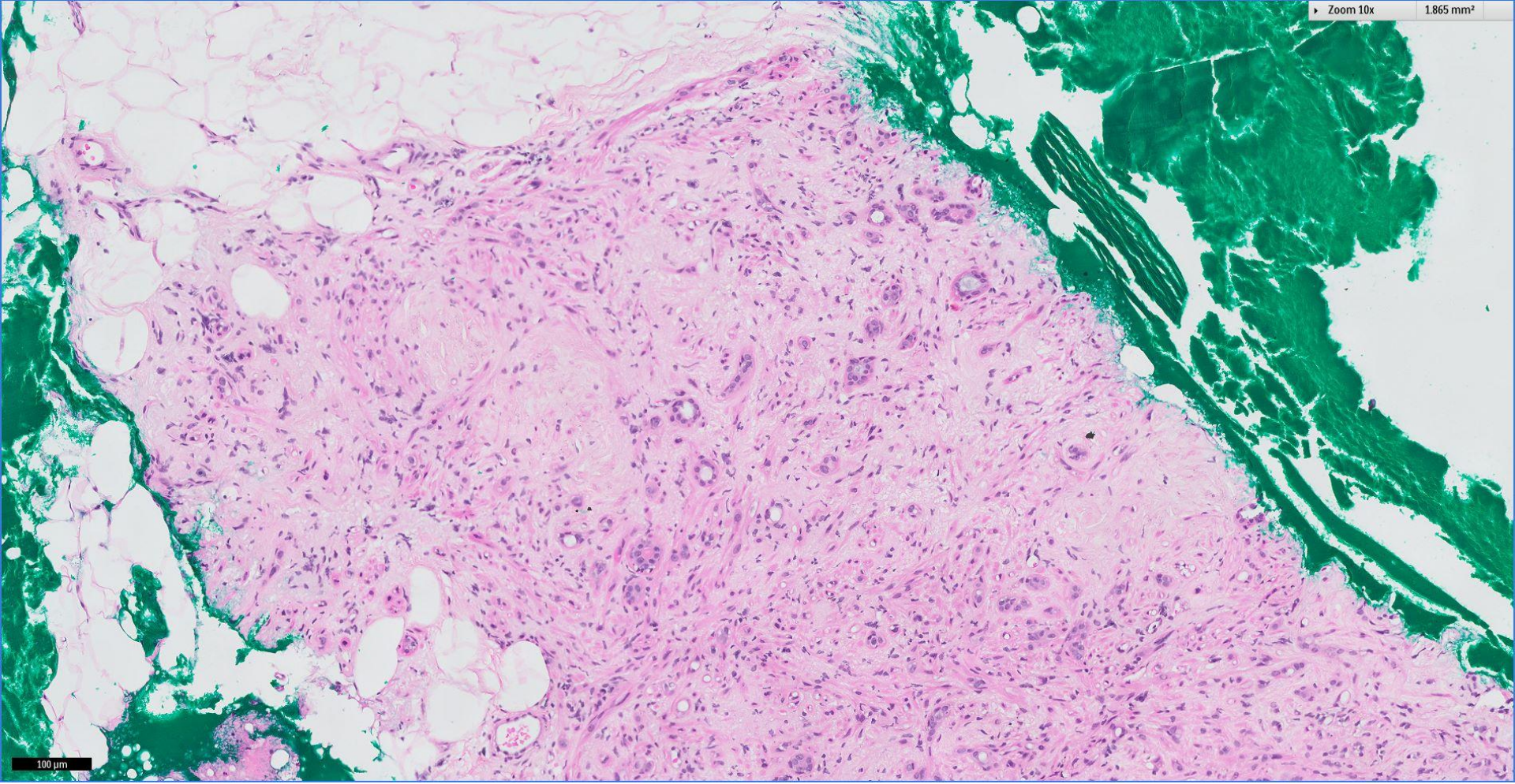




200 μ m

Zoom 10x

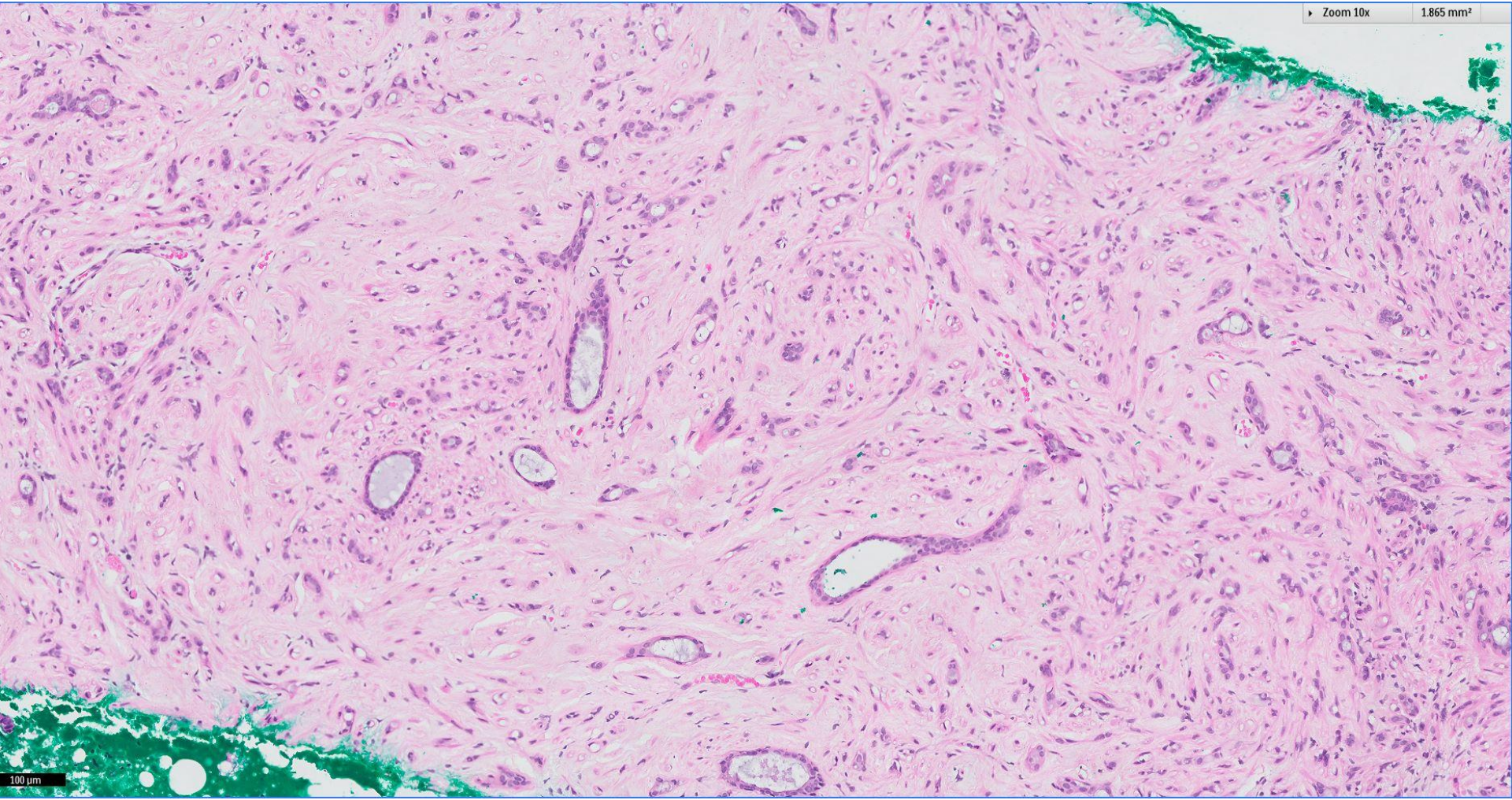
1.865 mm²



100 μm

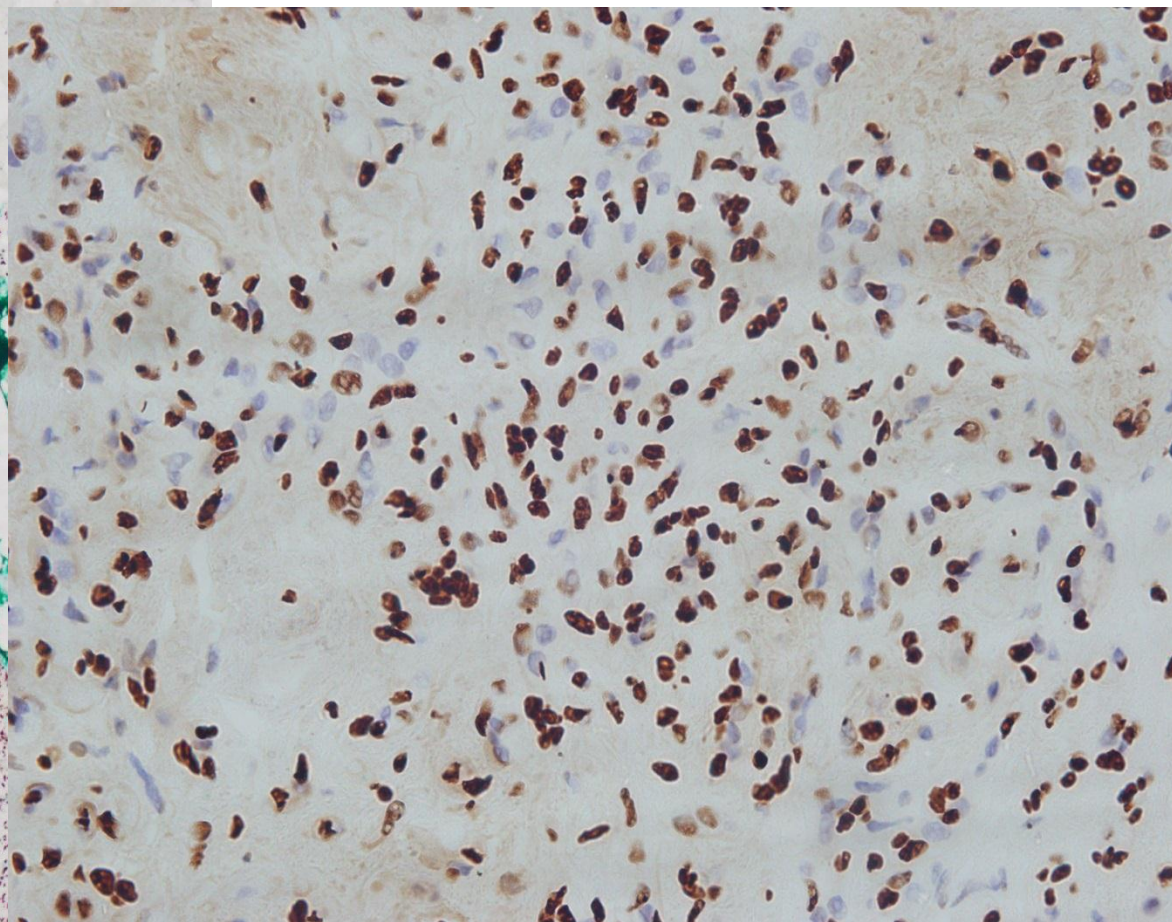
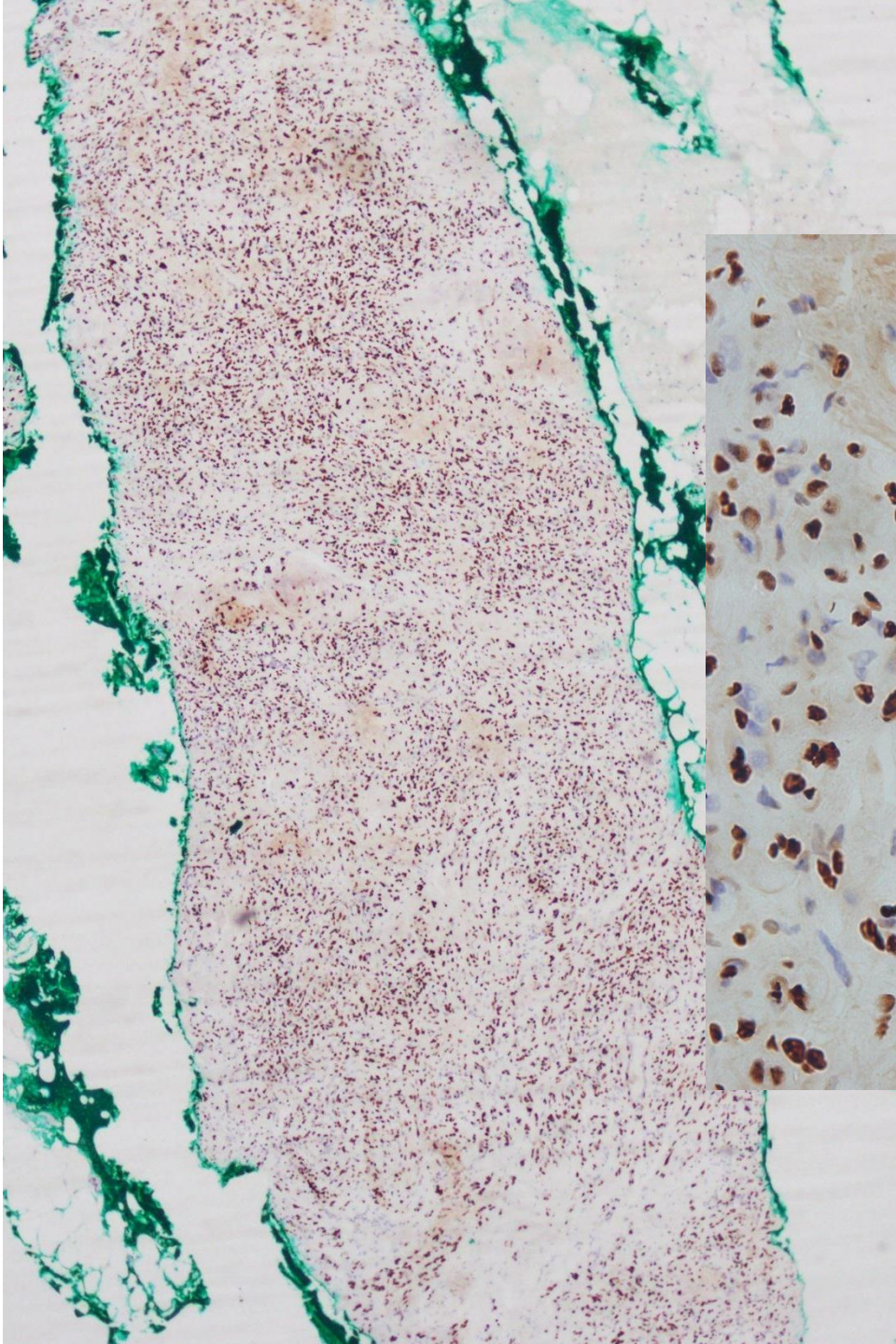
Zoom 10x

1.865 mm²

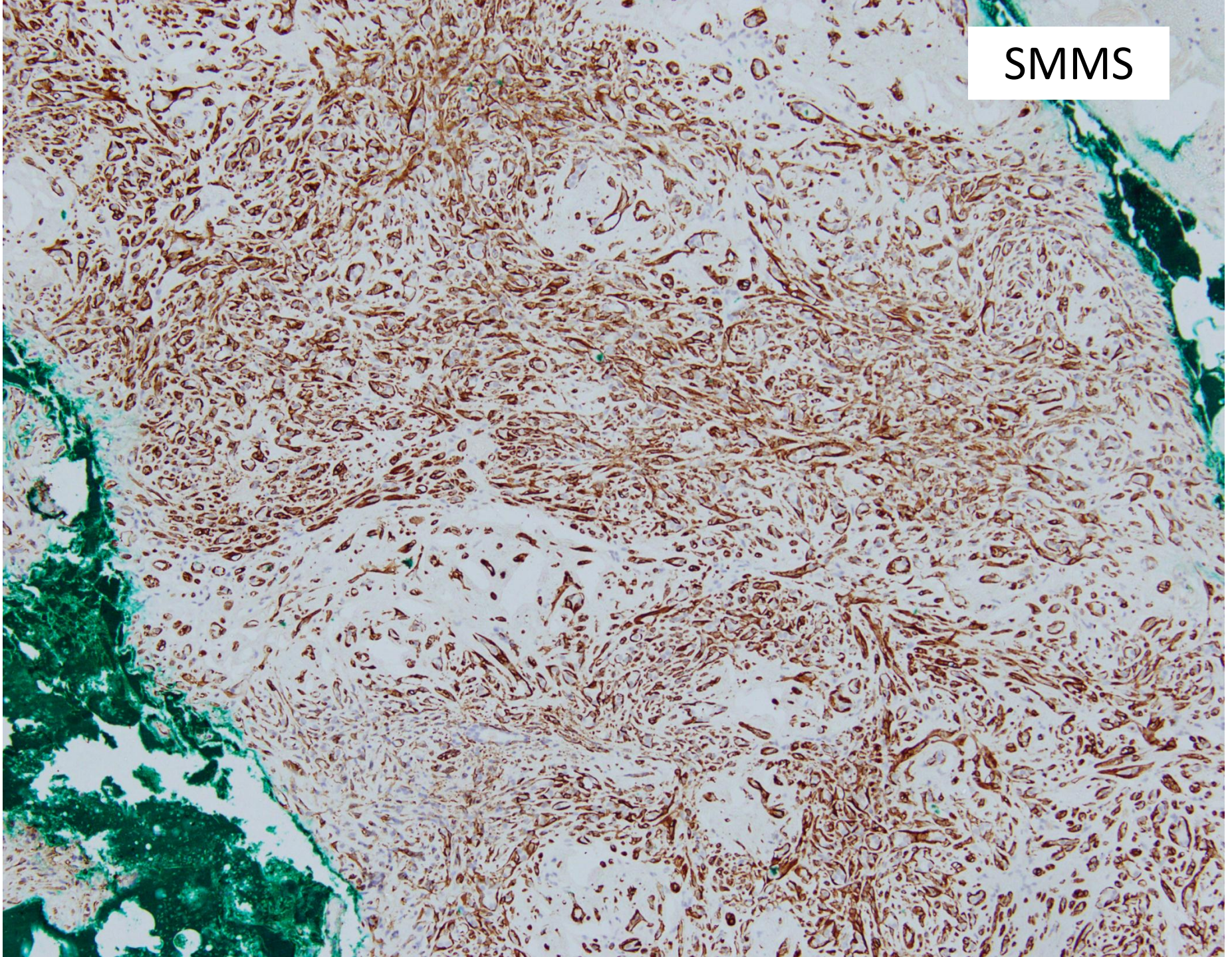


100 µm

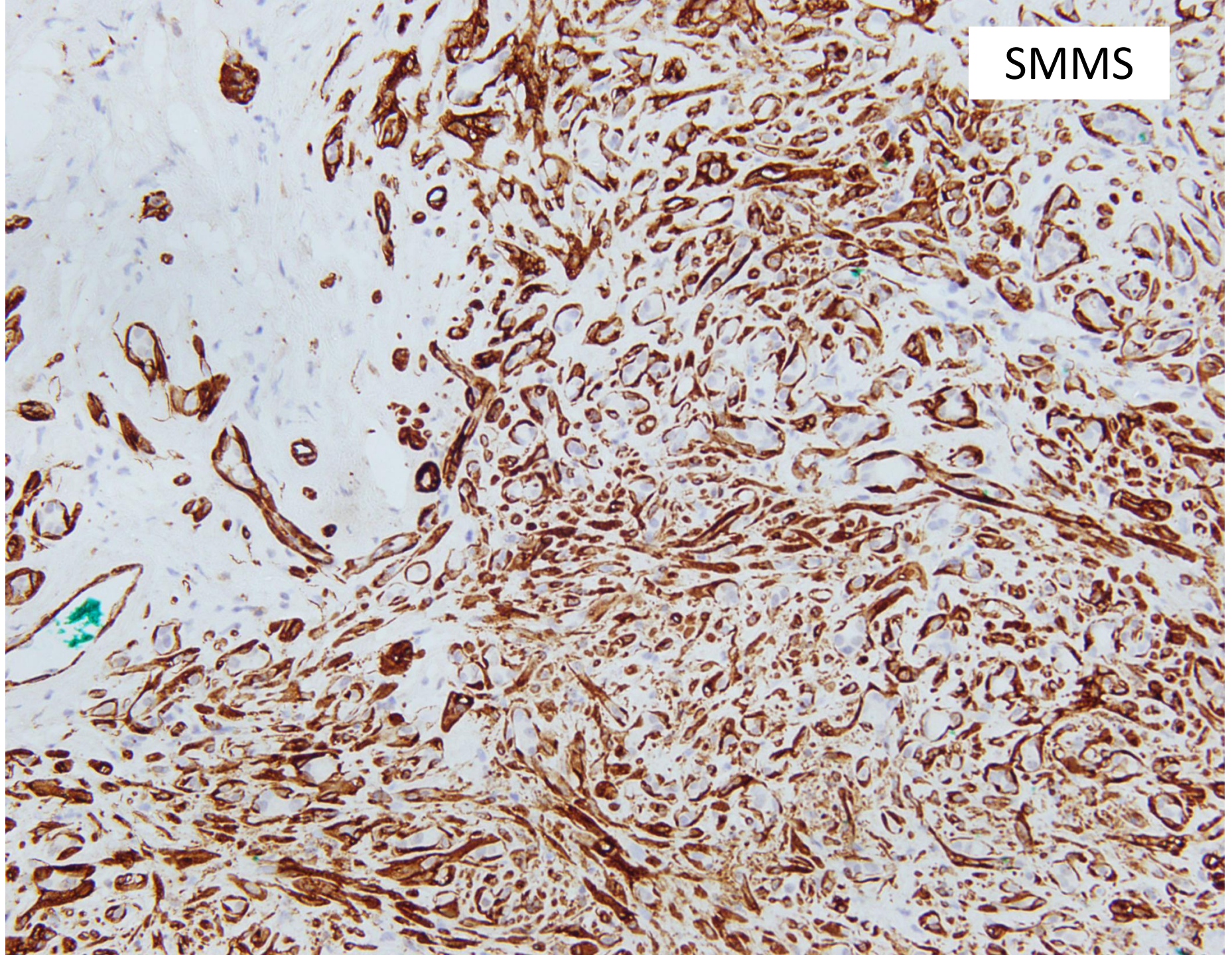
p63



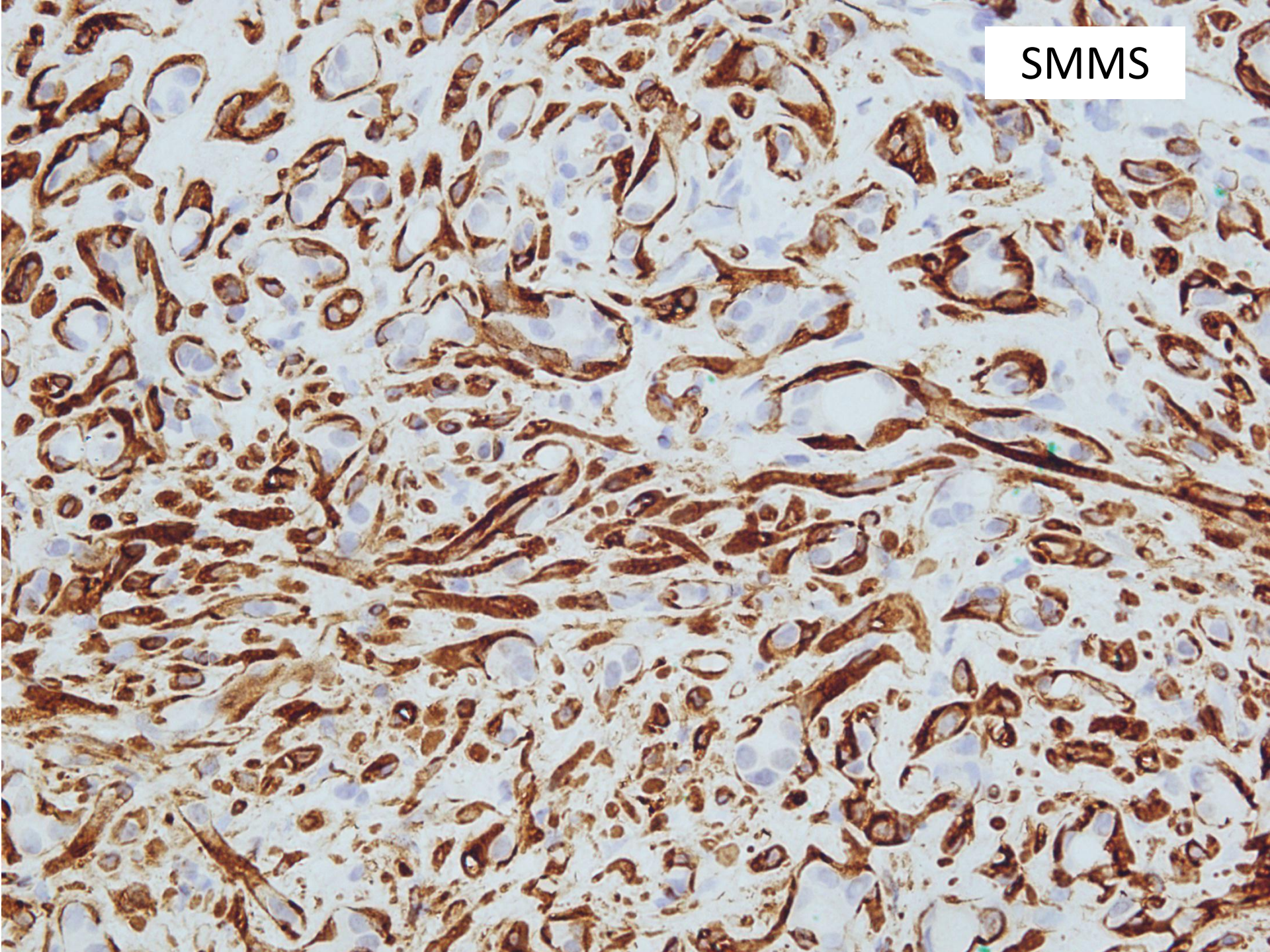
SMMS



SMMS



SMMS



Stereotactic trucut biopsy, right breast
0900 nodule:

*Parts of a fibroadenoma with
sclerosing adenosis*



Sclectrosing adenosis

- Lobulocentric lesion characterised by enlargement of the terminal duct-lobular unit, with proliferation and elongation of ductules.
- Lobulocentricity is best appreciated at low magnification.
- Proliferating ductules are distorted and compressed by fibrosis, resulting in irregular clusters and strands of epithelial nests within fibrous stroma.
- Myoepithelial cells may become spindled, clear or hyperplastic.



Sclerosing adenosis

- Mimics an invasive process, especially tubular carcinoma.
- Diagnostic clues:
 - Retention of lobularity.
 - Rounded nodular circumscribed periphery of the lesion.
 - Bilayered appearance of proliferating ductules with preserved myoepithelial cells.
 - Intact basement membrane sheath.
- Use of immunohistochemistry for myoepithelial markers.



Sclectrosing adenosis with marked ductular attenuation

- May resemble invasive lobular carcinoma.
- Nodular lobulocentric appearance at low magnification is key to diagnosis.
- Cells in sclerosing adenosis are spindled (myoepithelial cells) as compared to invasive lobular carcinoma cells which are round to ovoid.
- Invasive lobular carcinoma:
 - Infiltrating pattern without lobulocentricity.
 - Multiple microscopic invasive foci.
 - Permeation of invasive elements into surrounding tissue and in between intact lobules.



Take home messages

- Marked sclerosing adenosis can occur in a fibroadenoma, & may mimic an invasive process on cursory review.
- Lobulocentricity can be difficult to appreciate when sclerosing adenosis supervenes in a fibroadenoma.
- Look for:
 - Rounded edges of the fibroadenoma and its interphase with surrounding tissue.
 - Presence of intact myoepithelial cells.
- Immunohistochemistry if needed.



 Breast
Pathology
Course 2014

