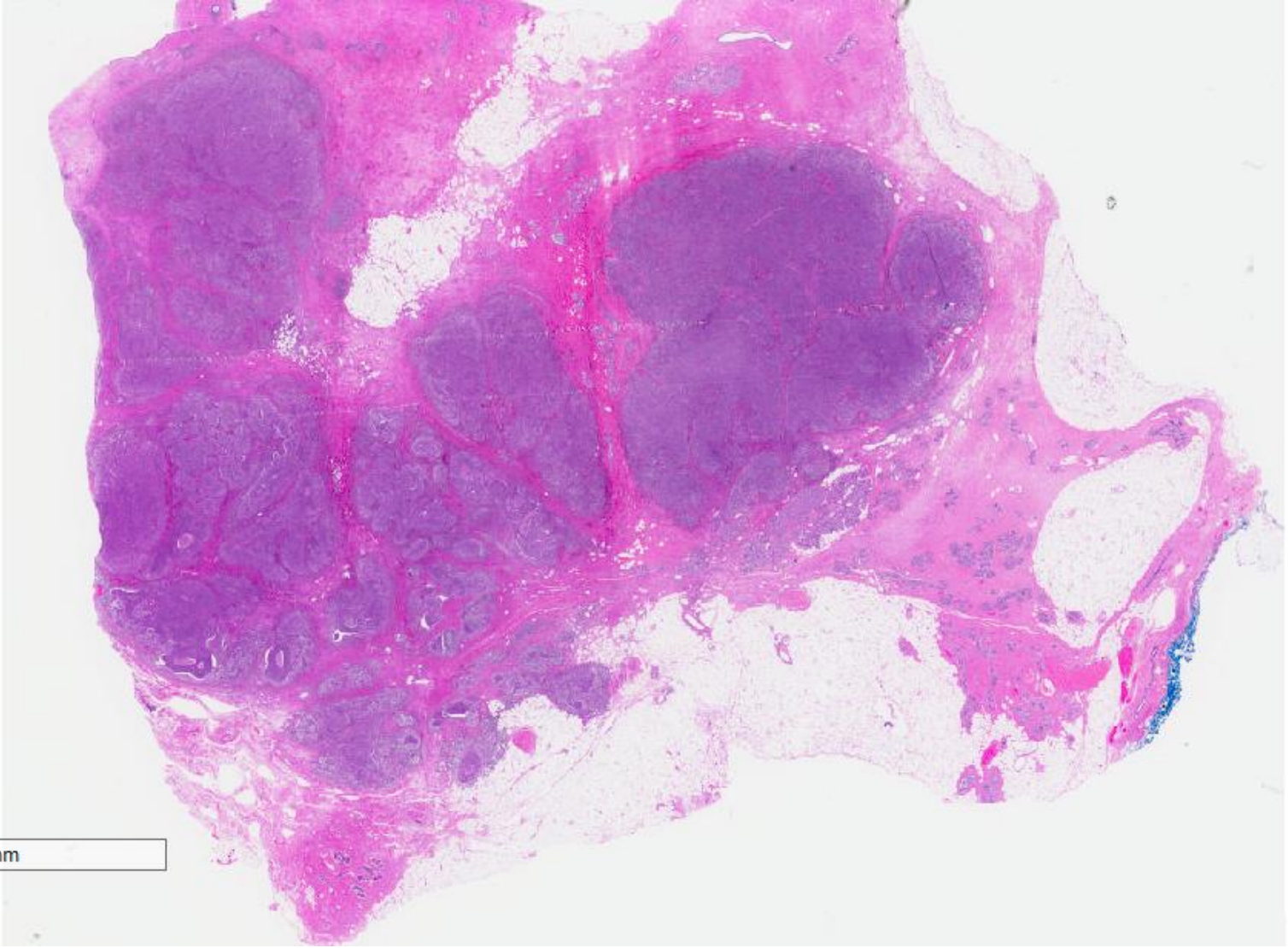


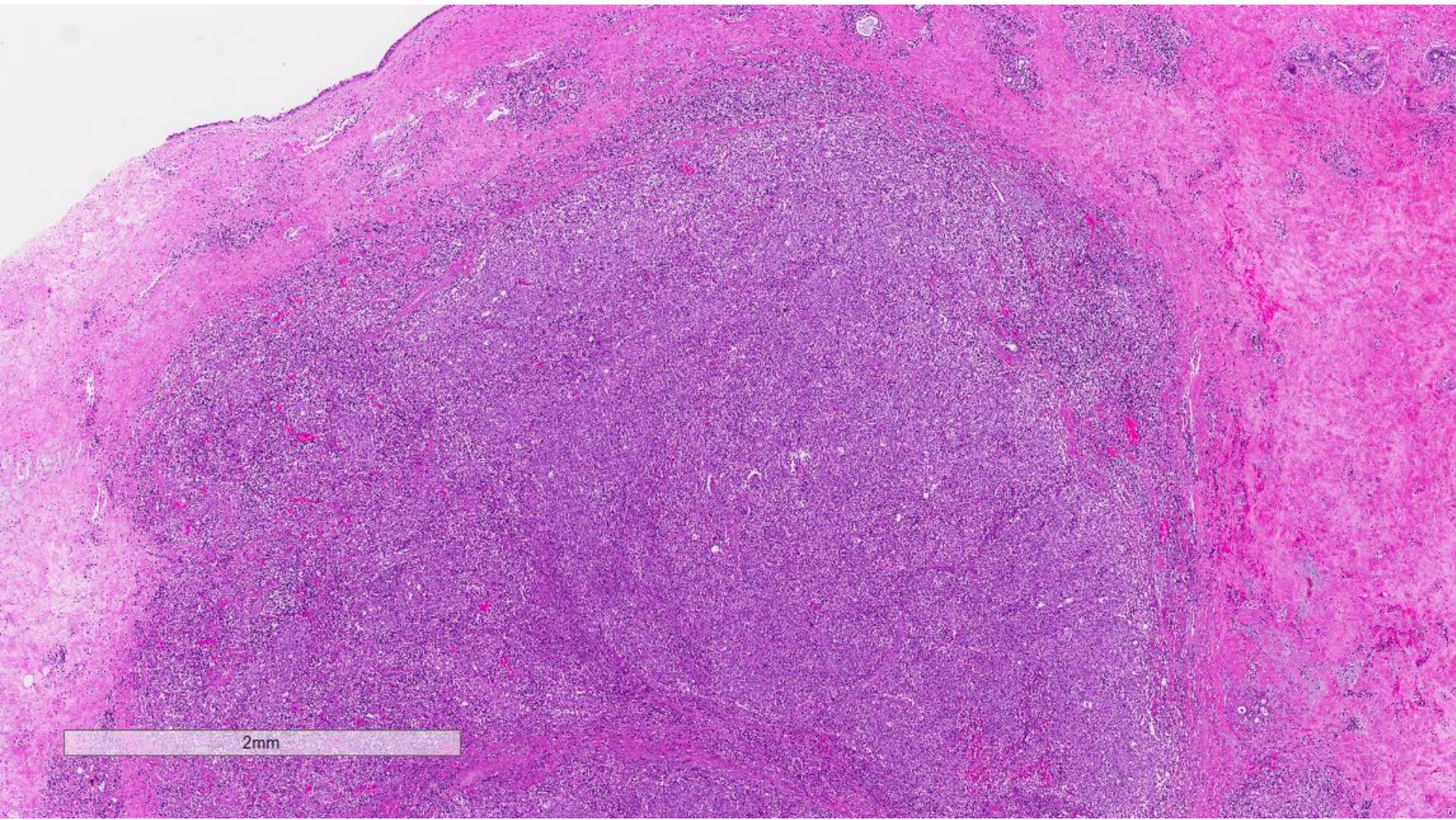
Case 47

50 year old lady presented with a left breast mass.

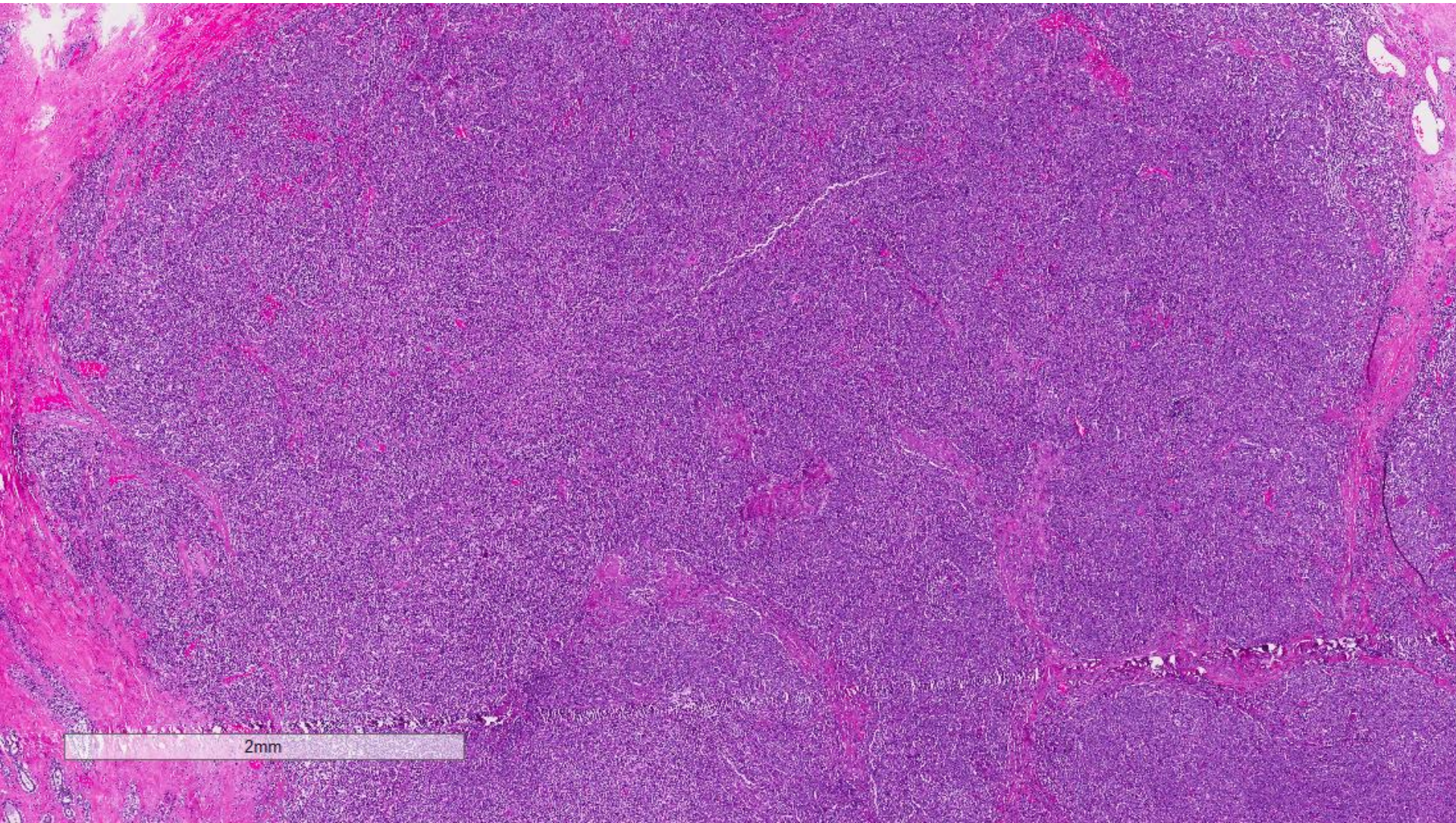
Wide excision was performed.

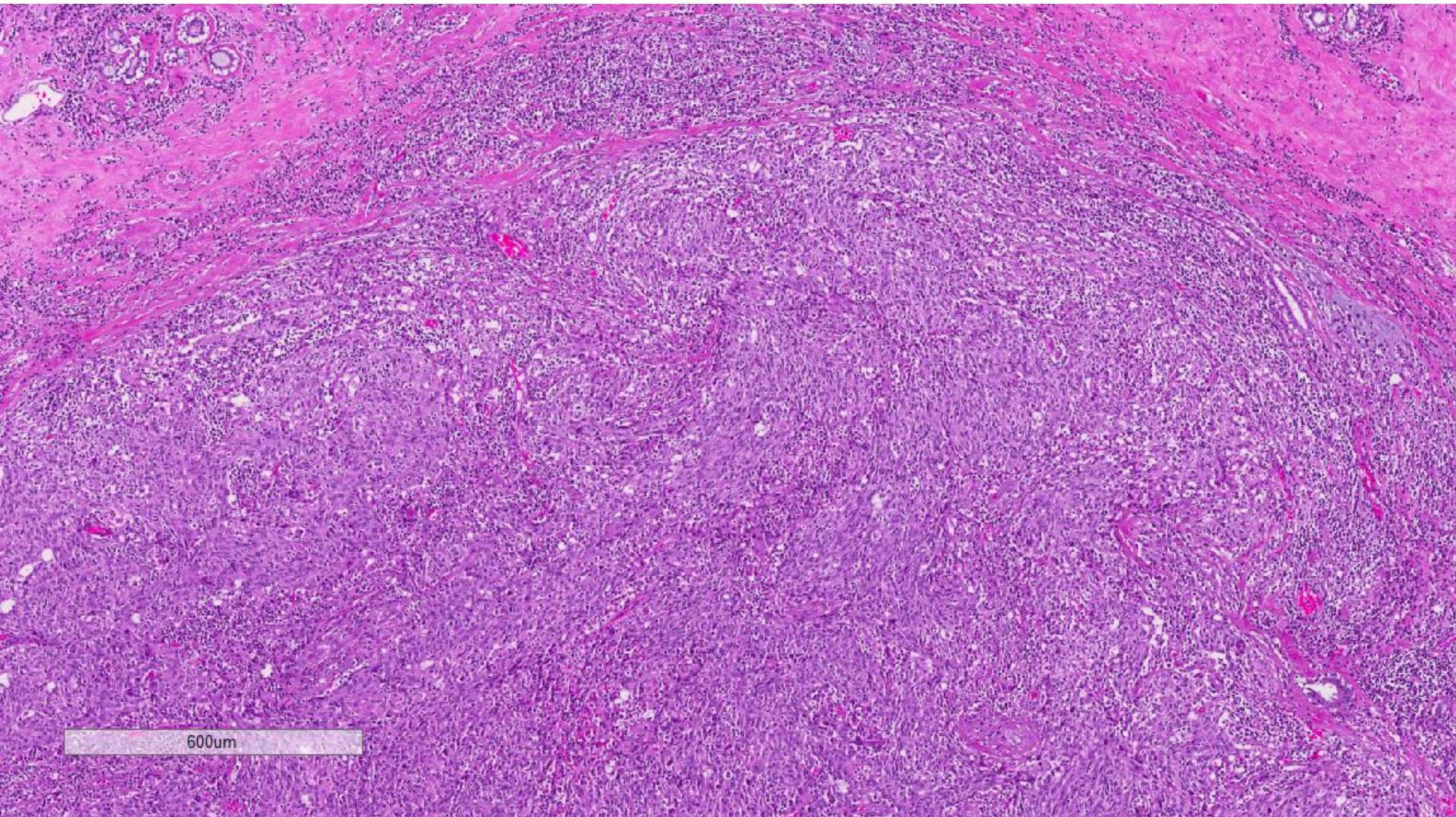


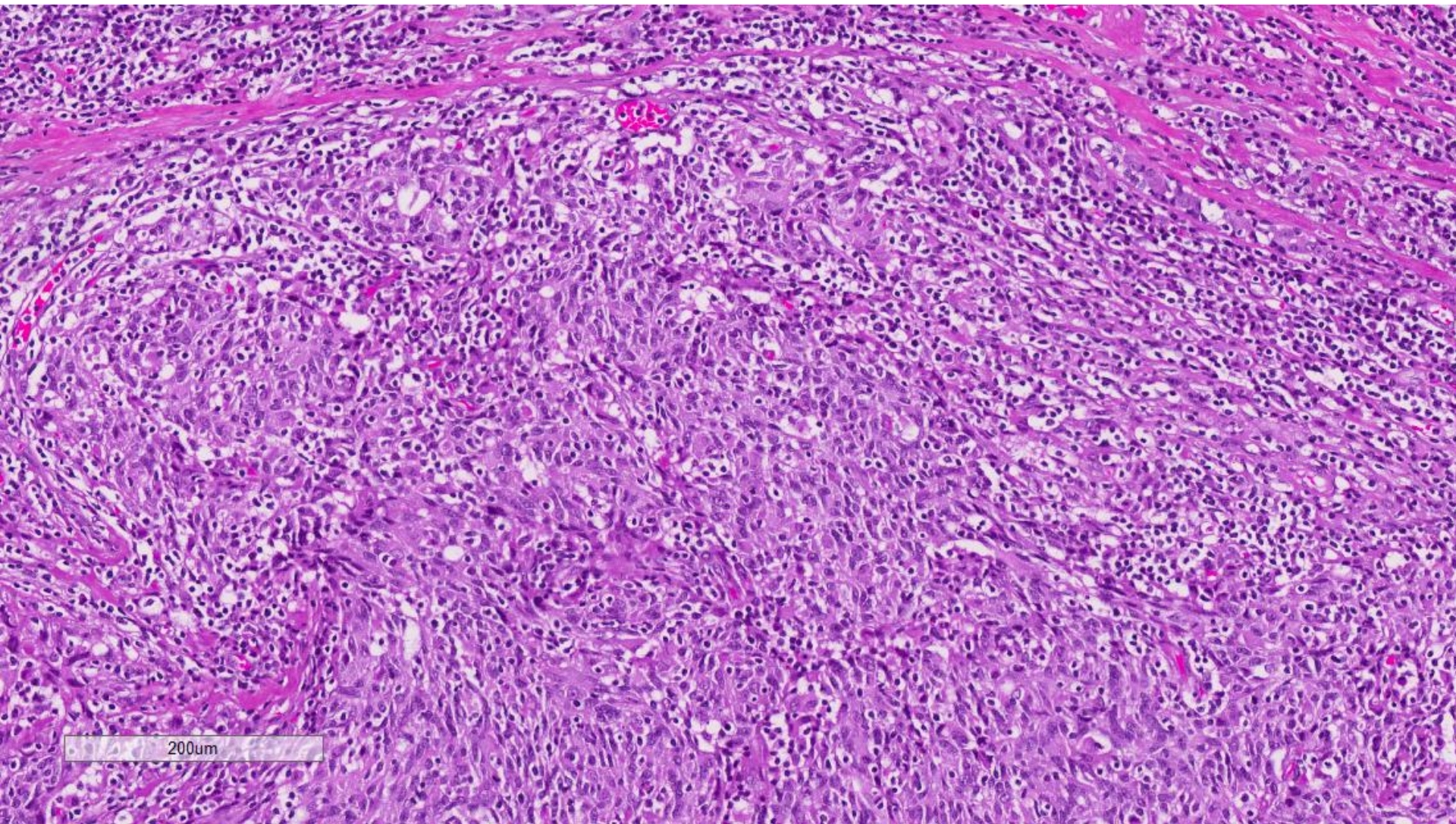
8mm



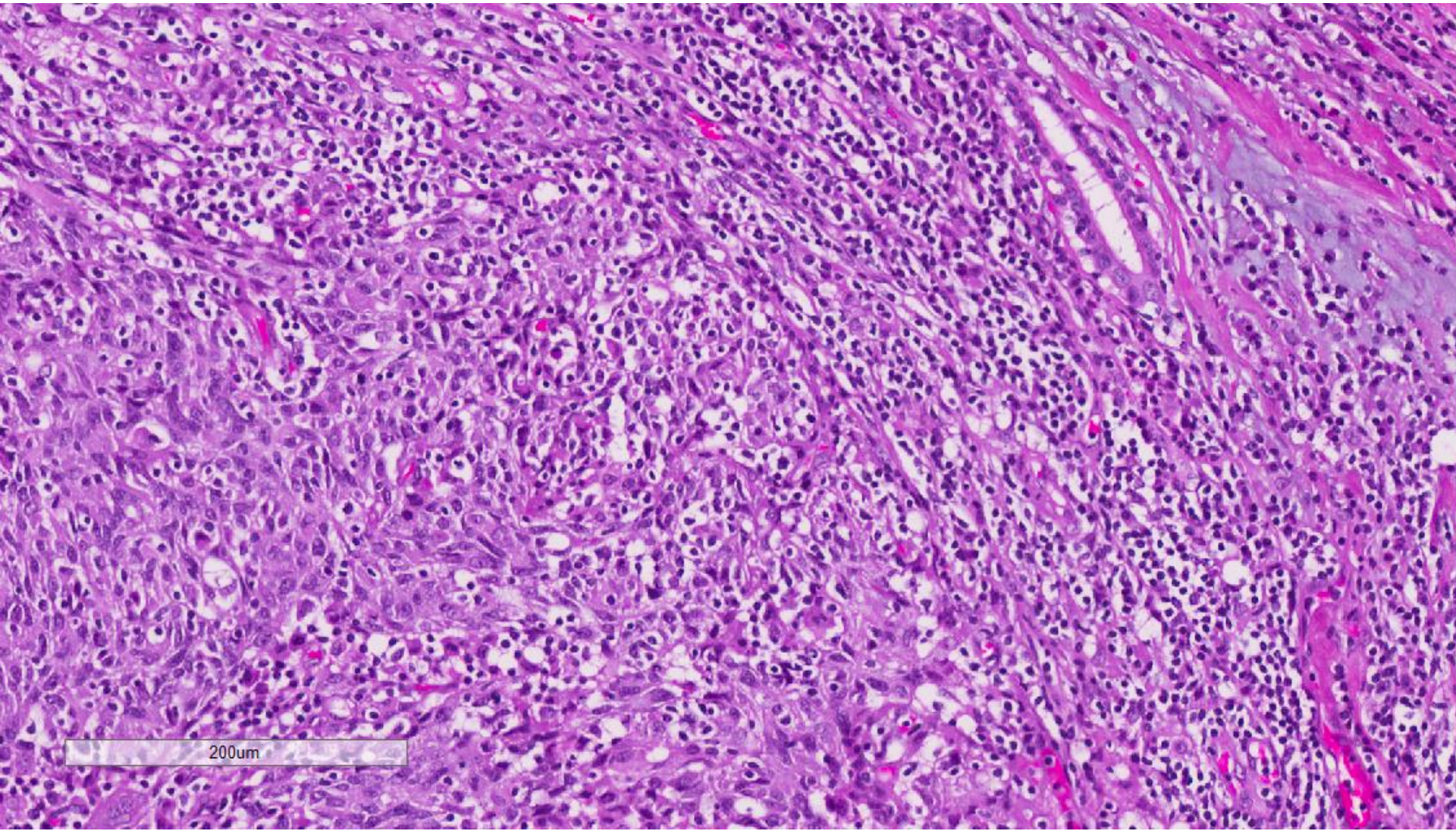
2mm

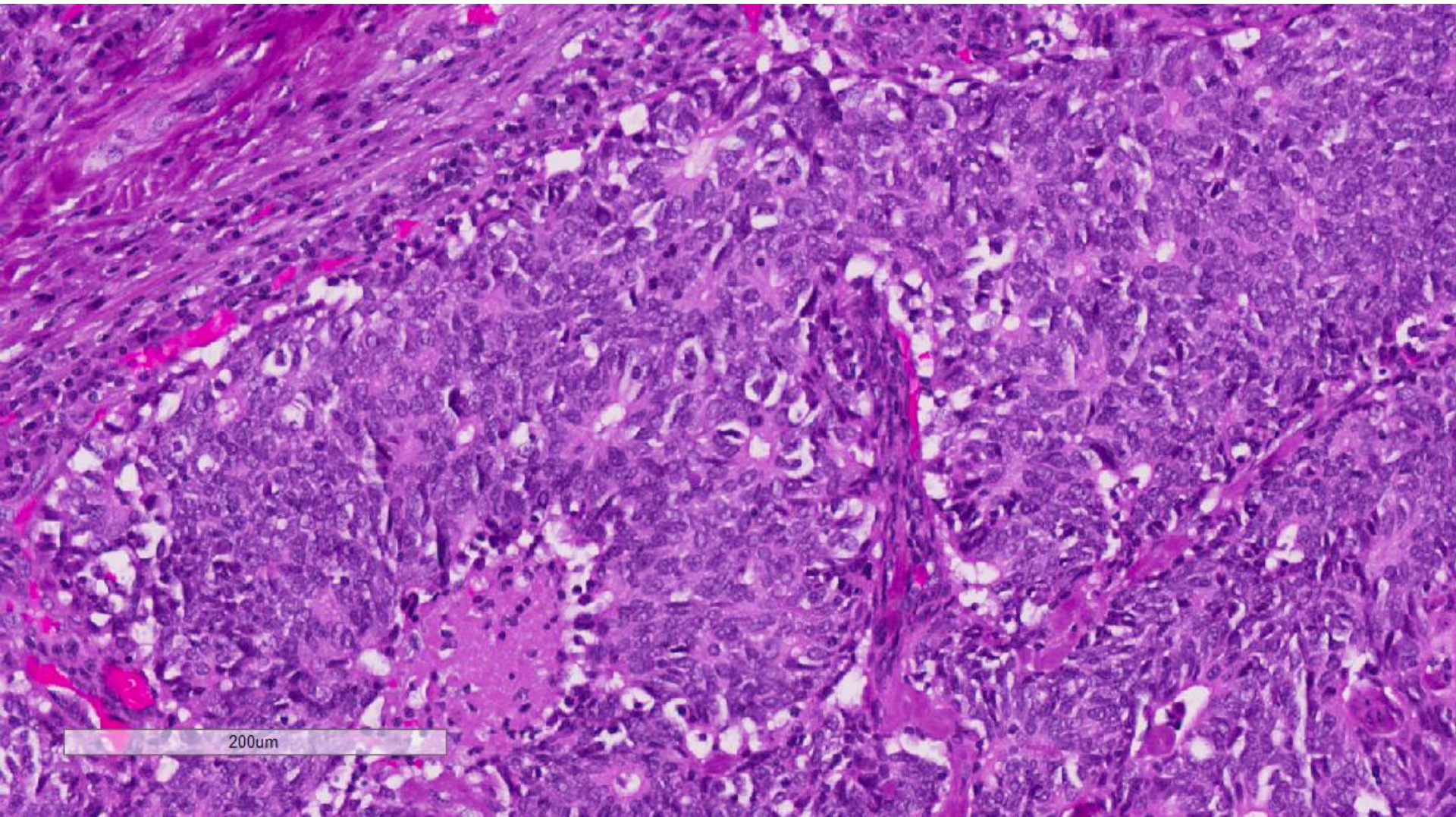






200µm





200um

Immunohistochemistry

ER negative, PR negative, cerbB2 negative.

Invasive ductal carcinoma grade 3, 55 mm

- Lymphoepithelial-like features.
- EBER in situ hybridisation negative.
- Basal markers CK5/6, CK14 and 34 β E12 positive.