

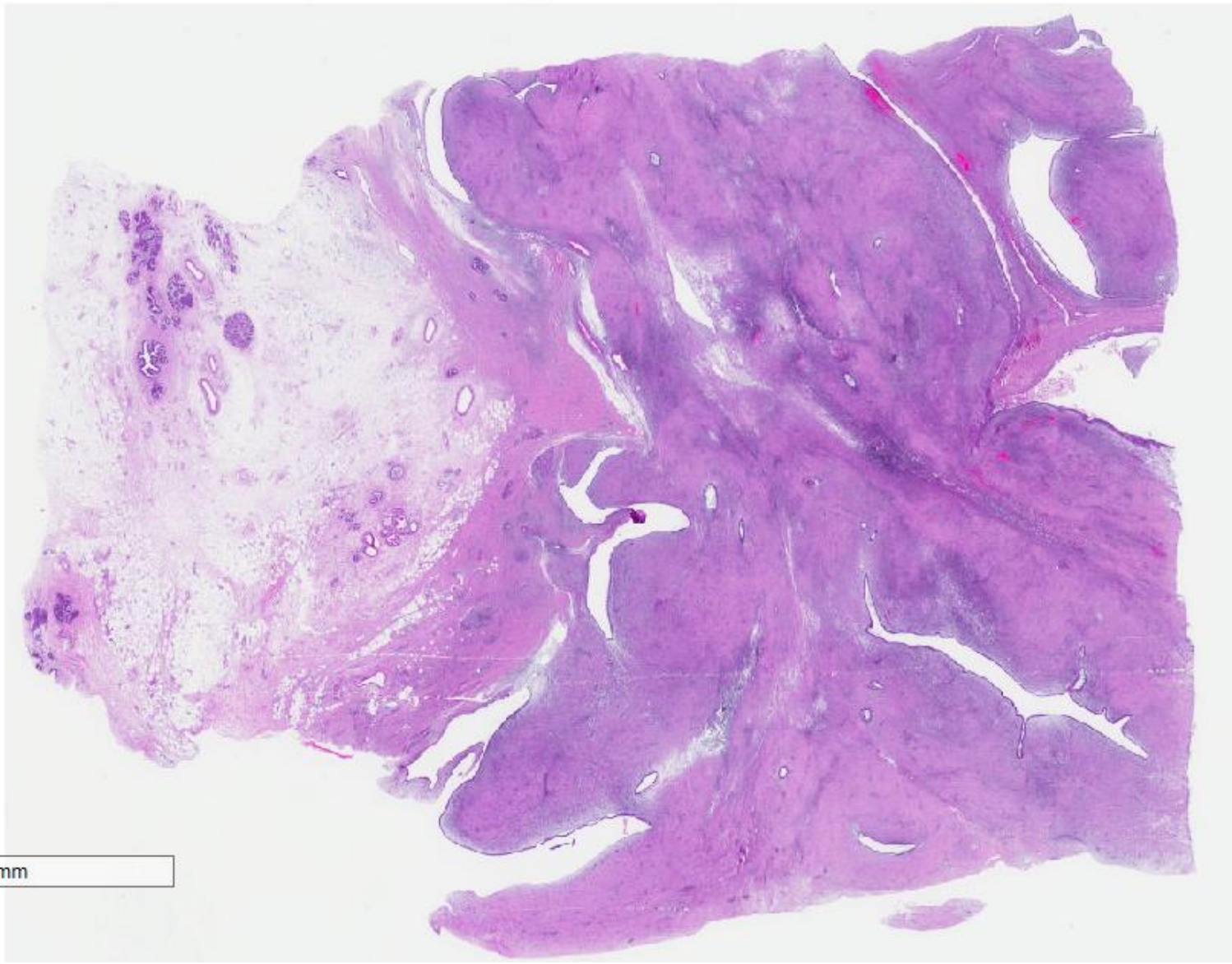
Case 45

54 year old lady underwent right mastectomy for a 20cm mass.

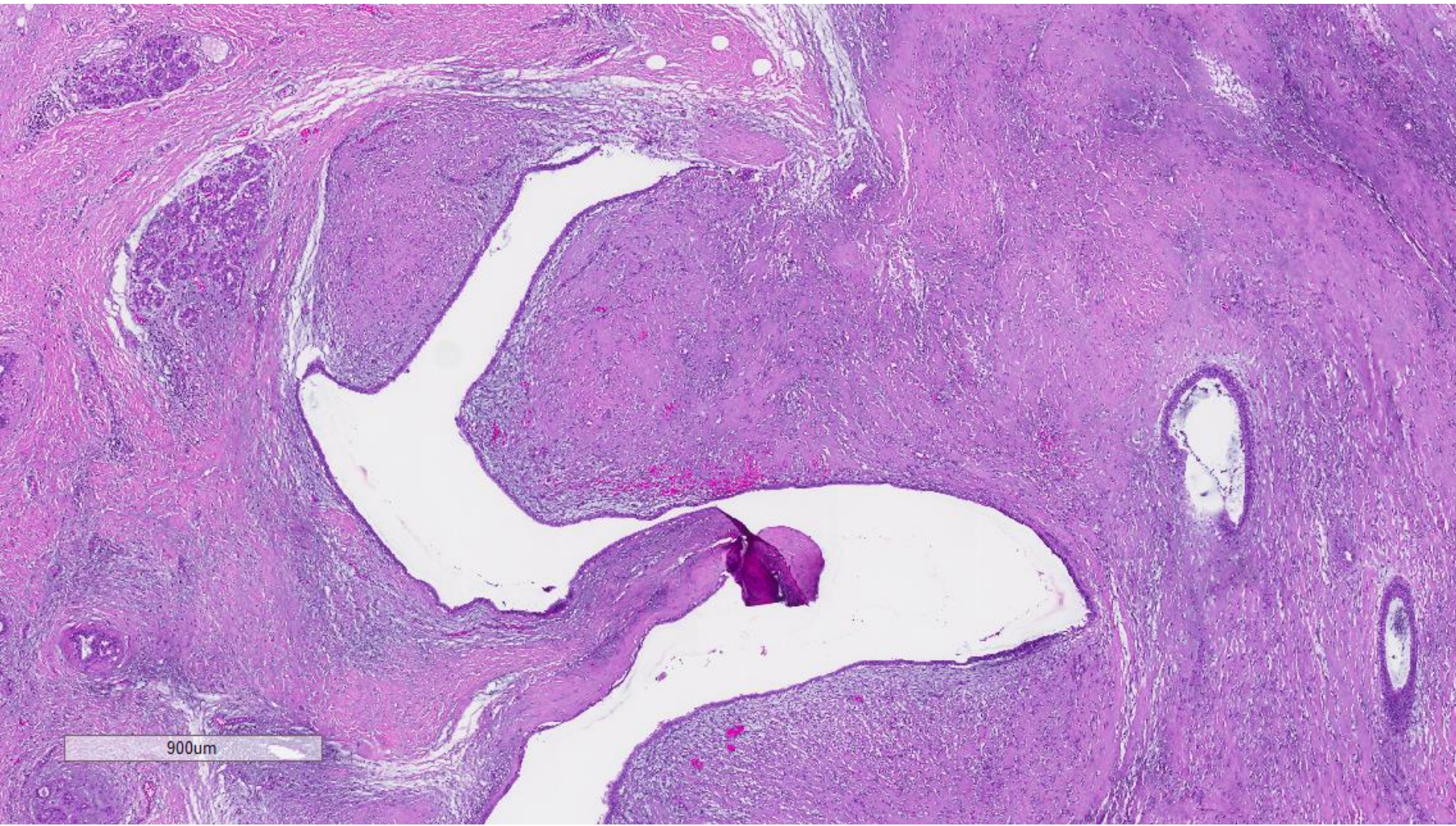




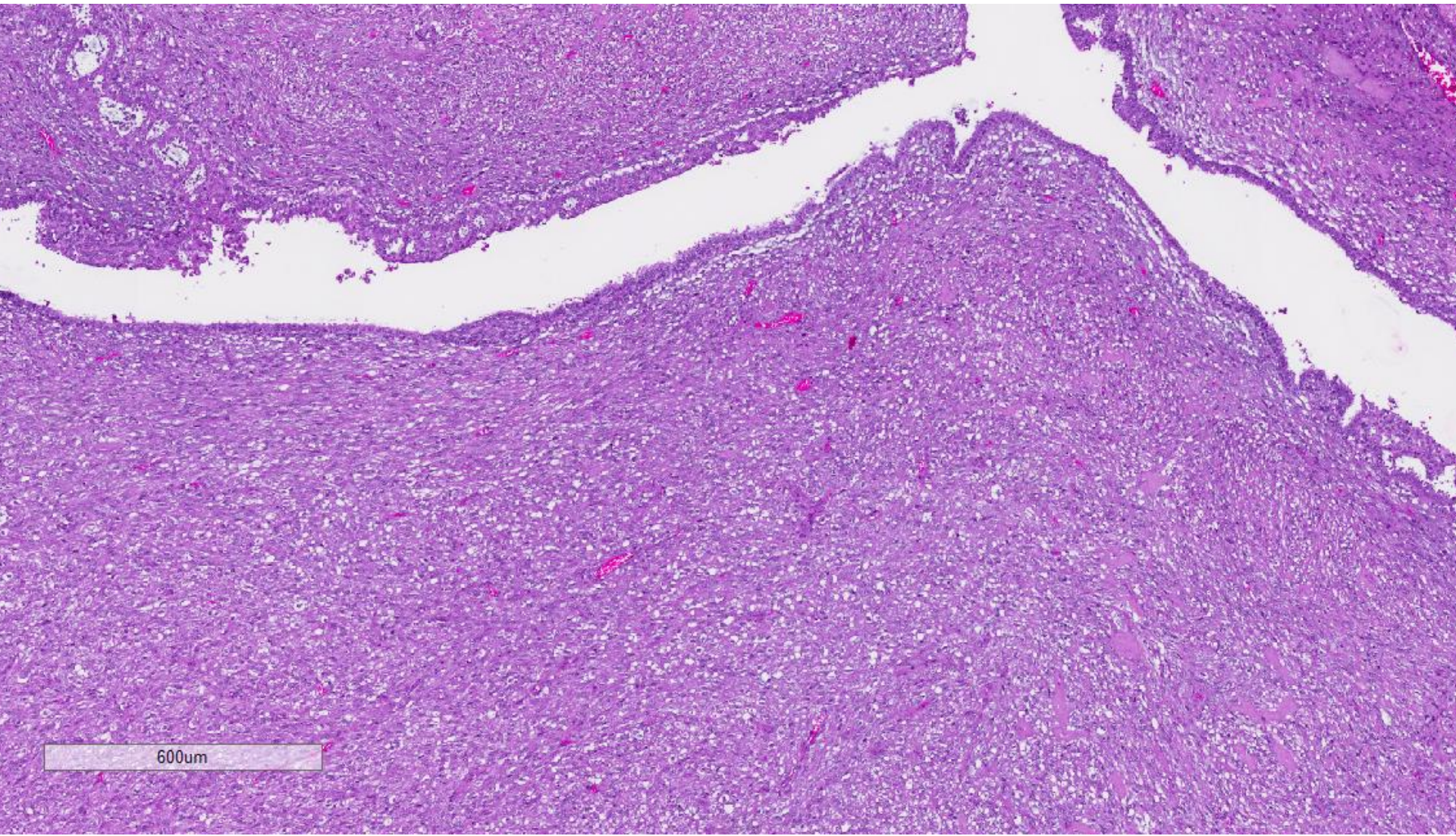




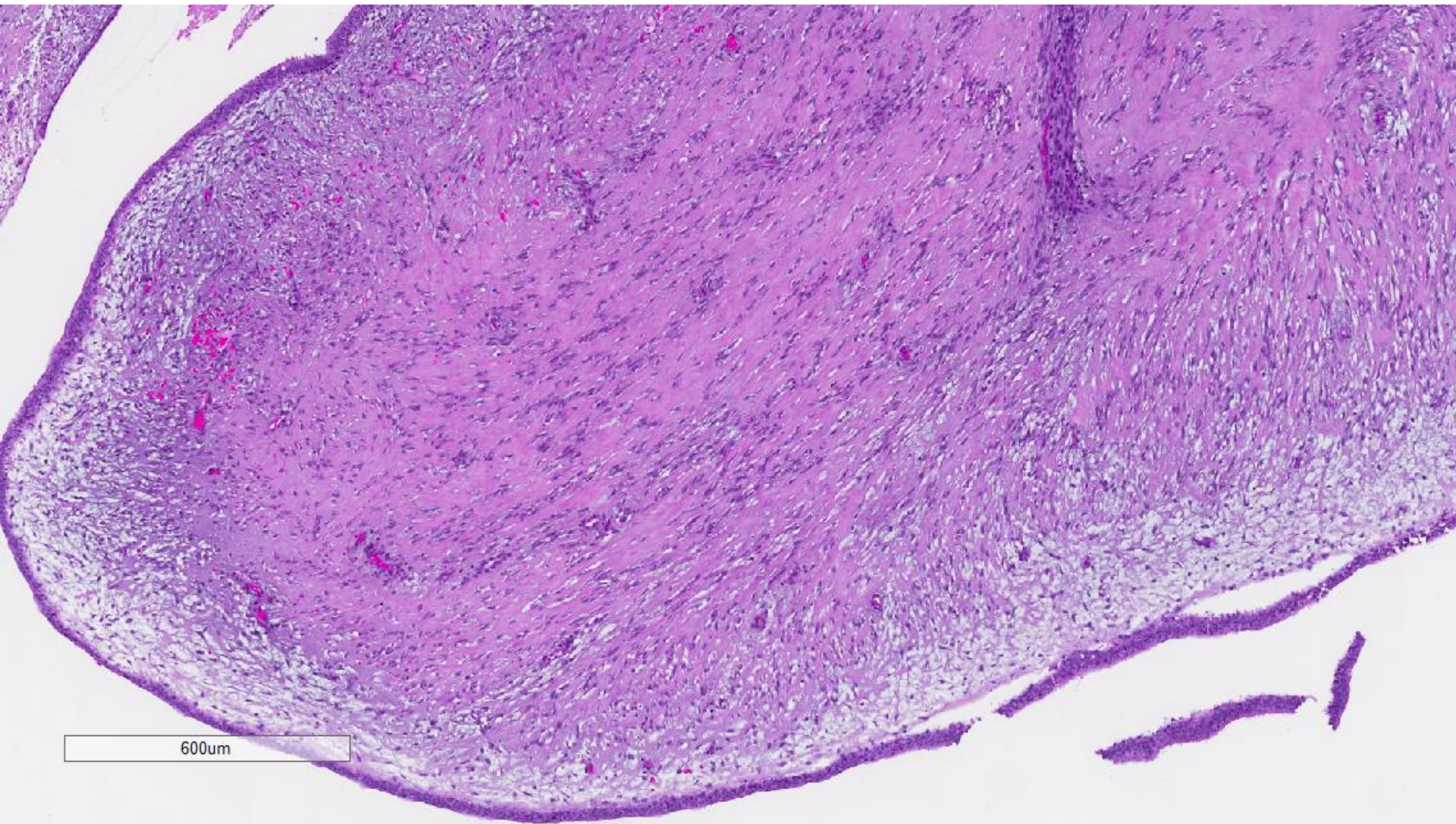
7mm



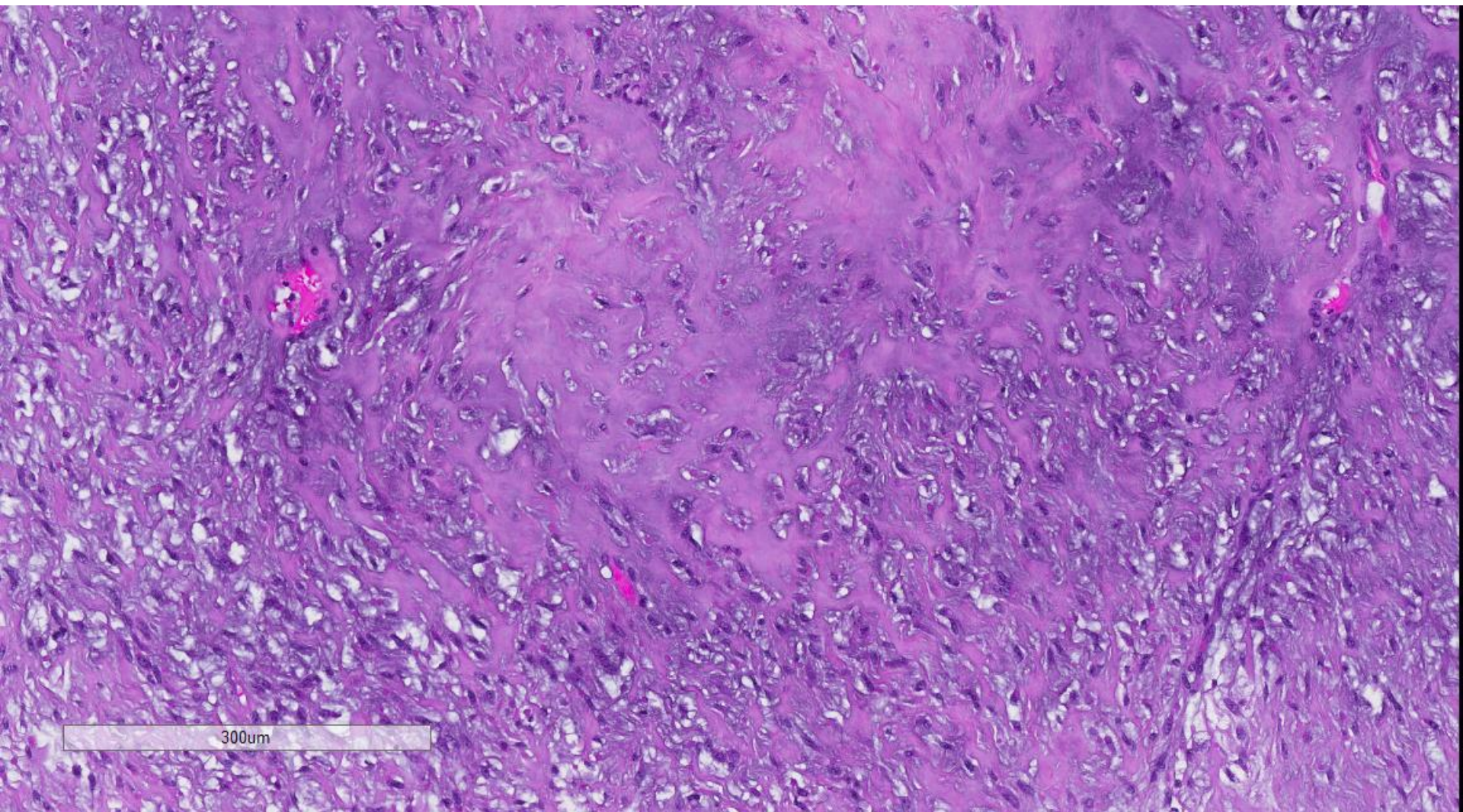
900um

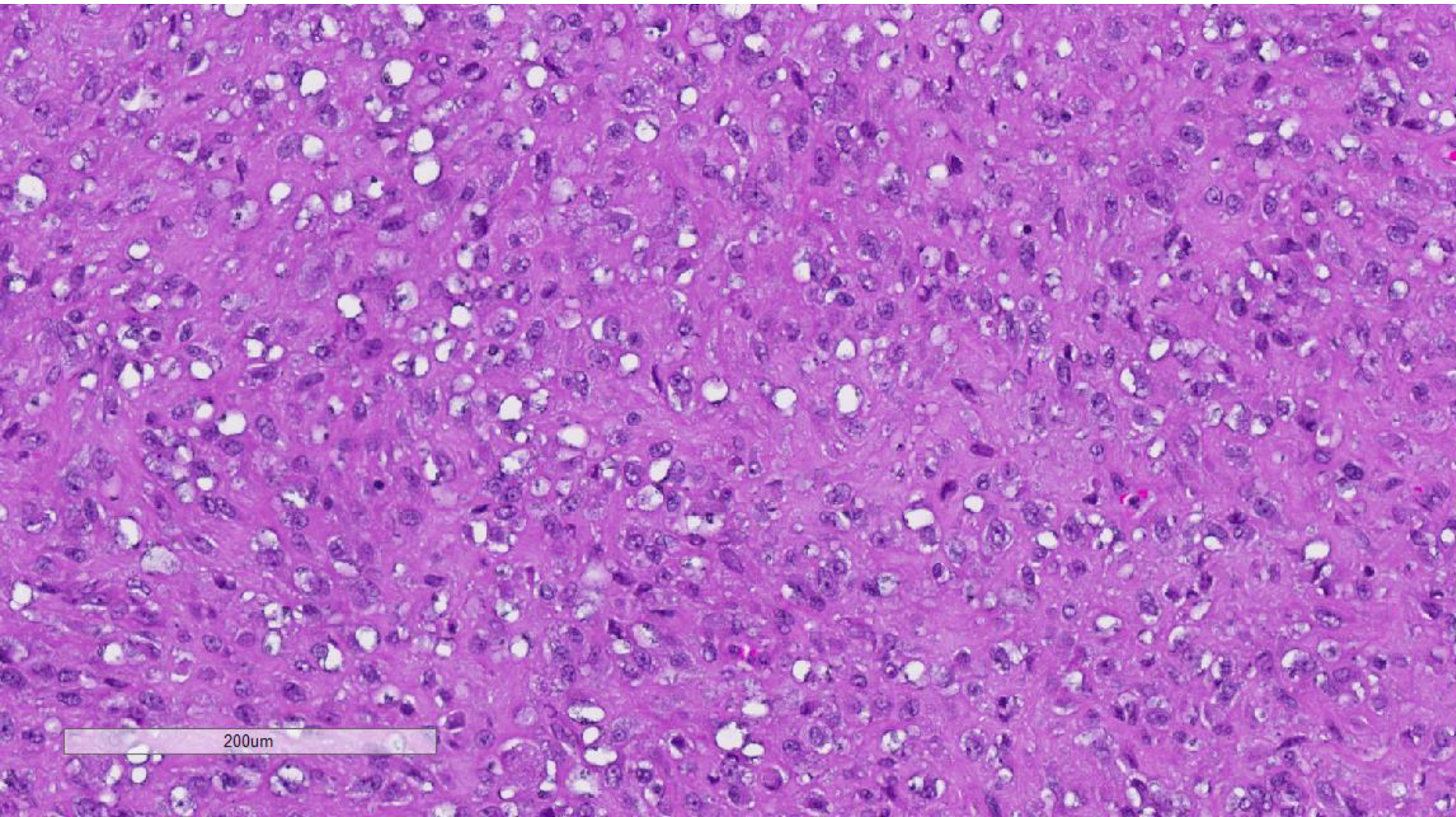


600um

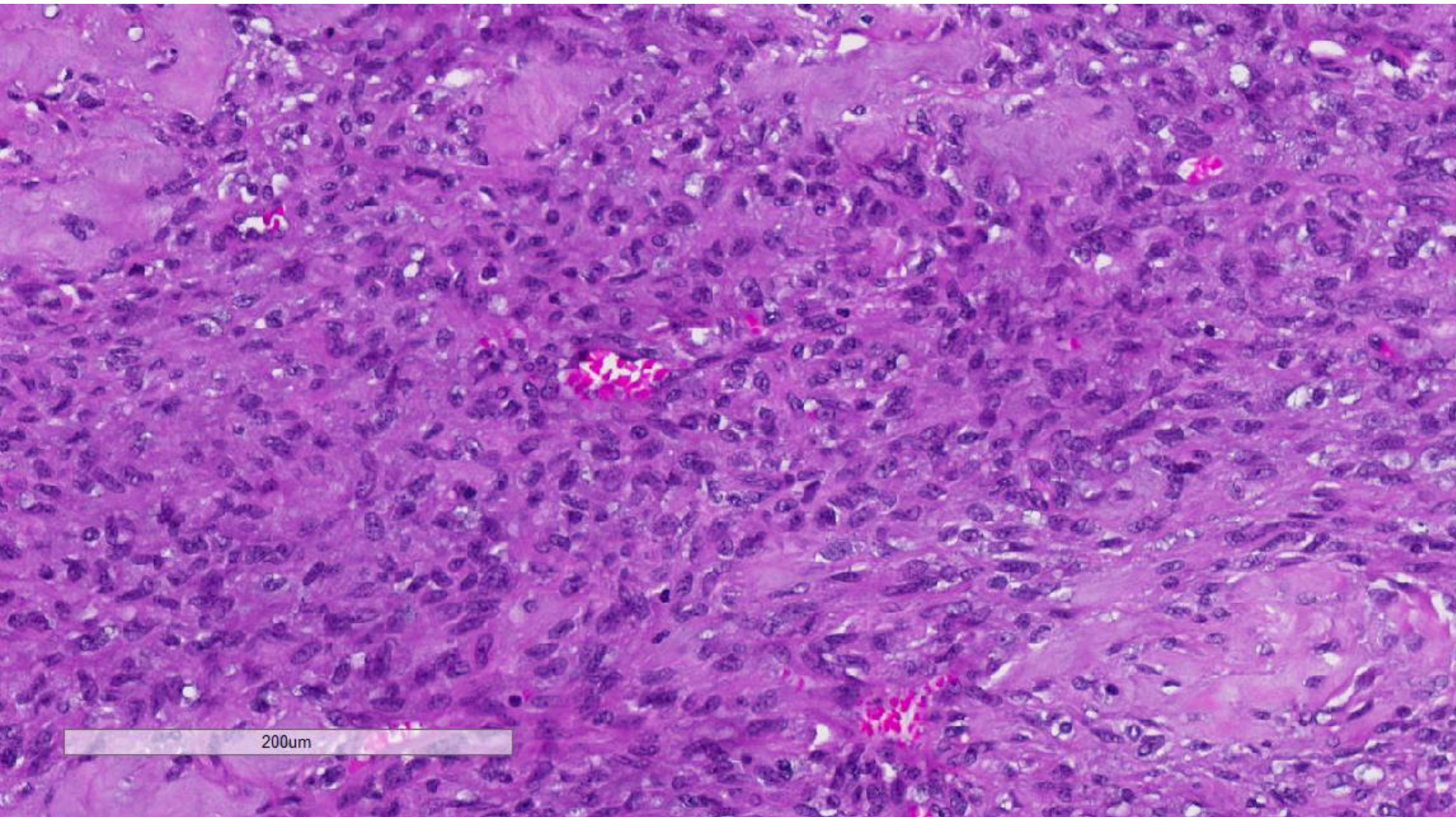


600um

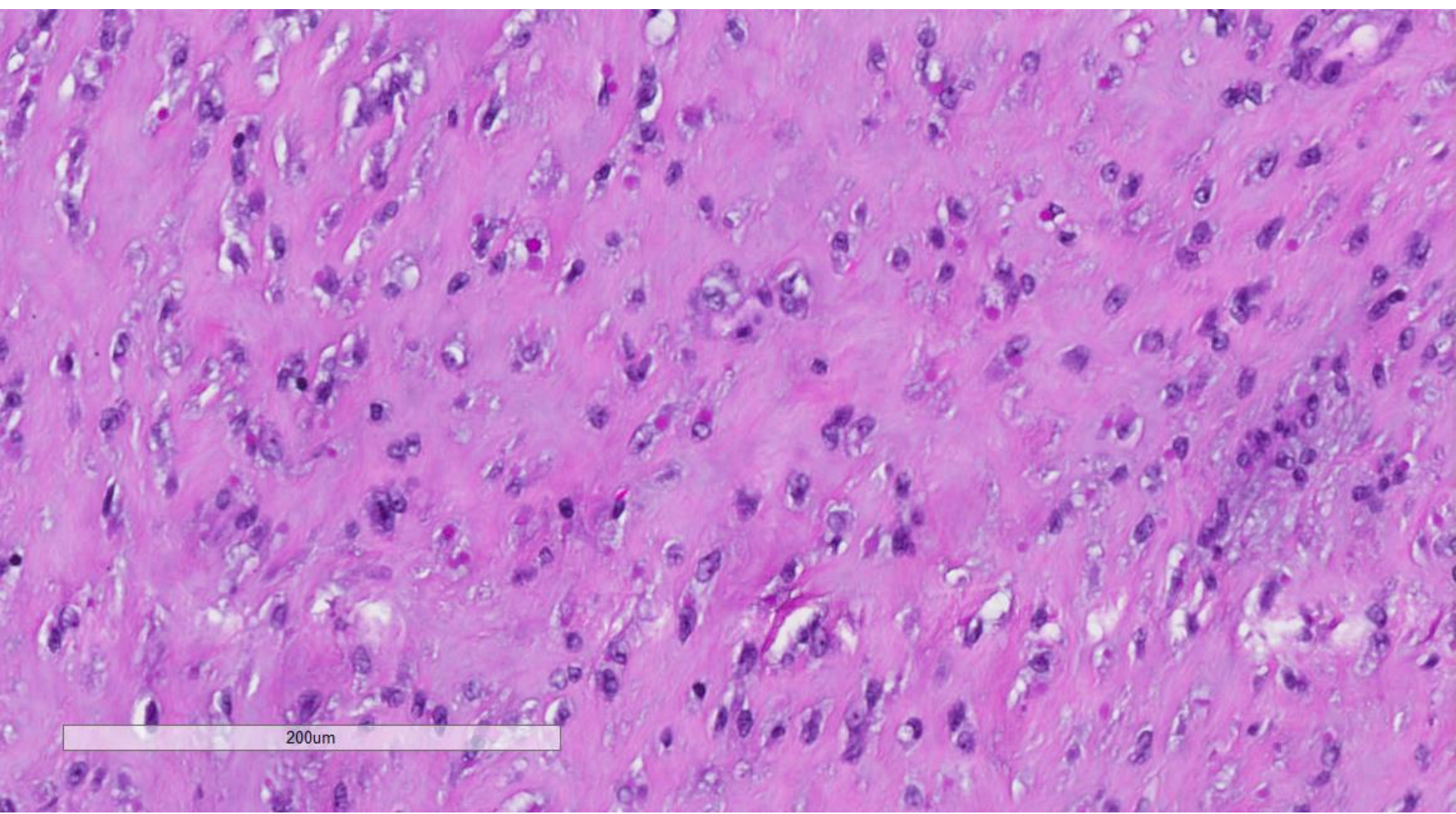




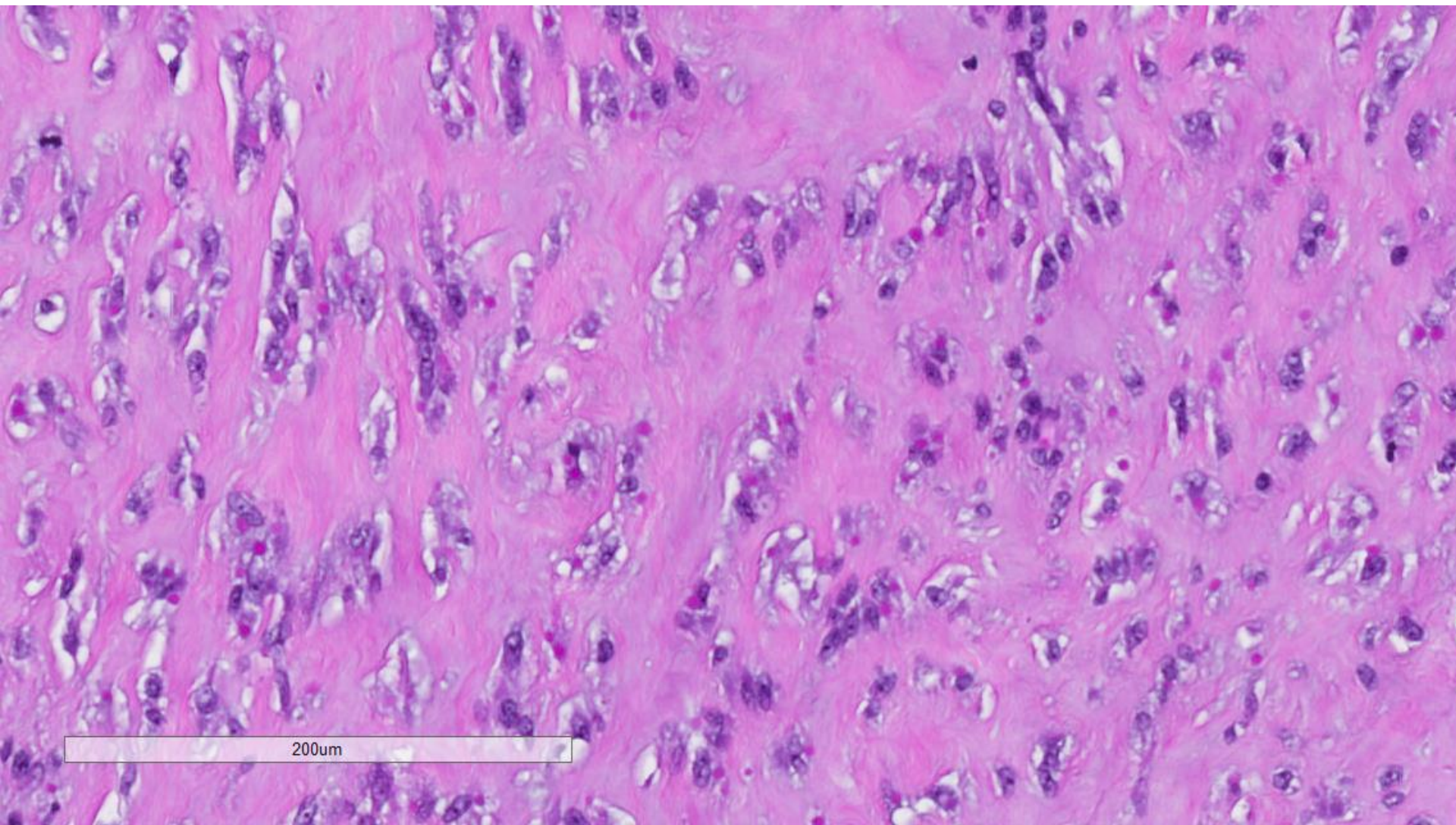
200um



200um



200um



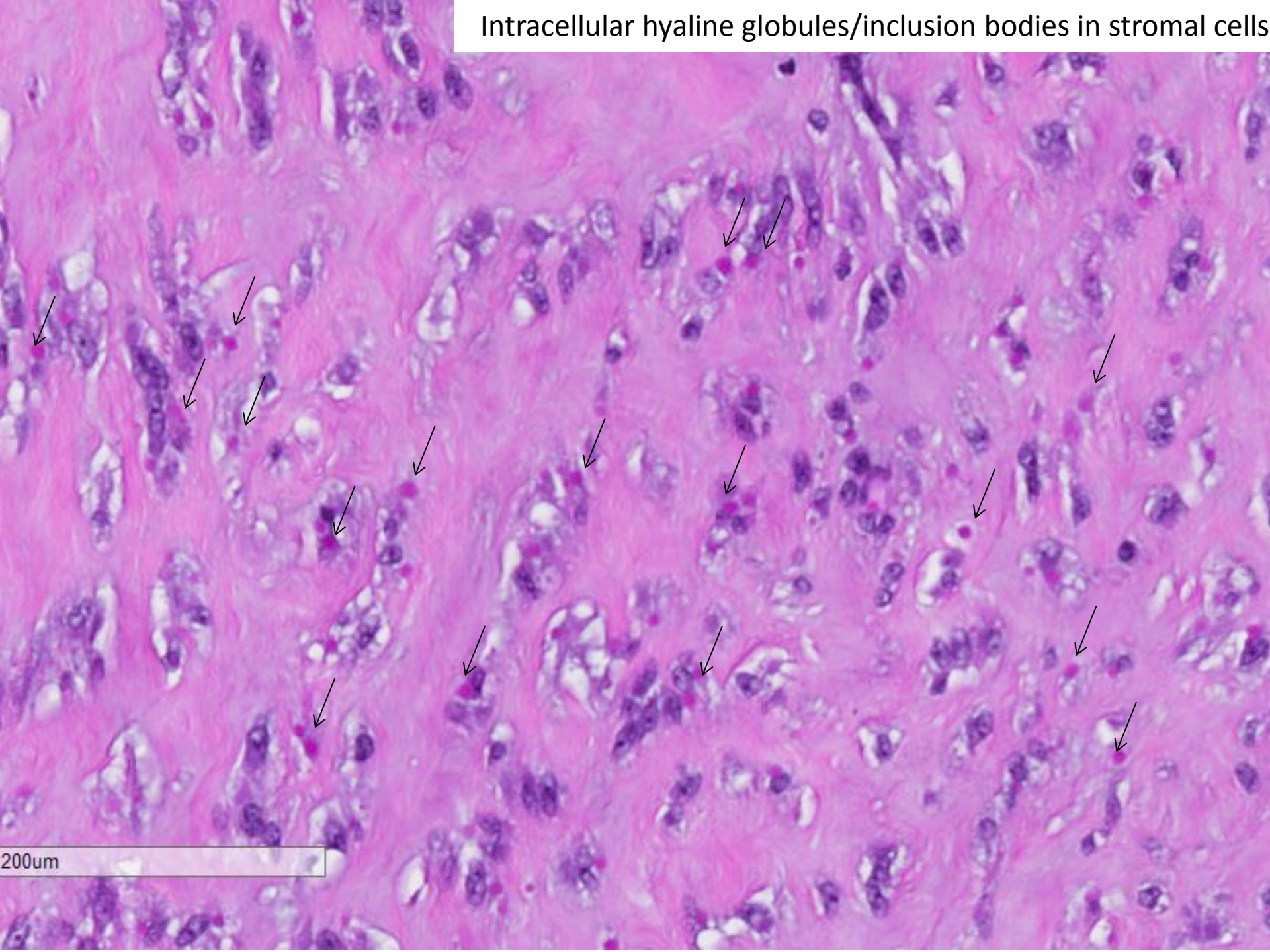
200um

Histological features

- Mild to moderate stromal atypia.
- Mild stromal hypercellularity.
- Focally permeative tumour borders.
- Mitoses generally few, but with one area demonstrating up to 12 mitoses per 10 high power fields.
- One area of stromal overgrowth.

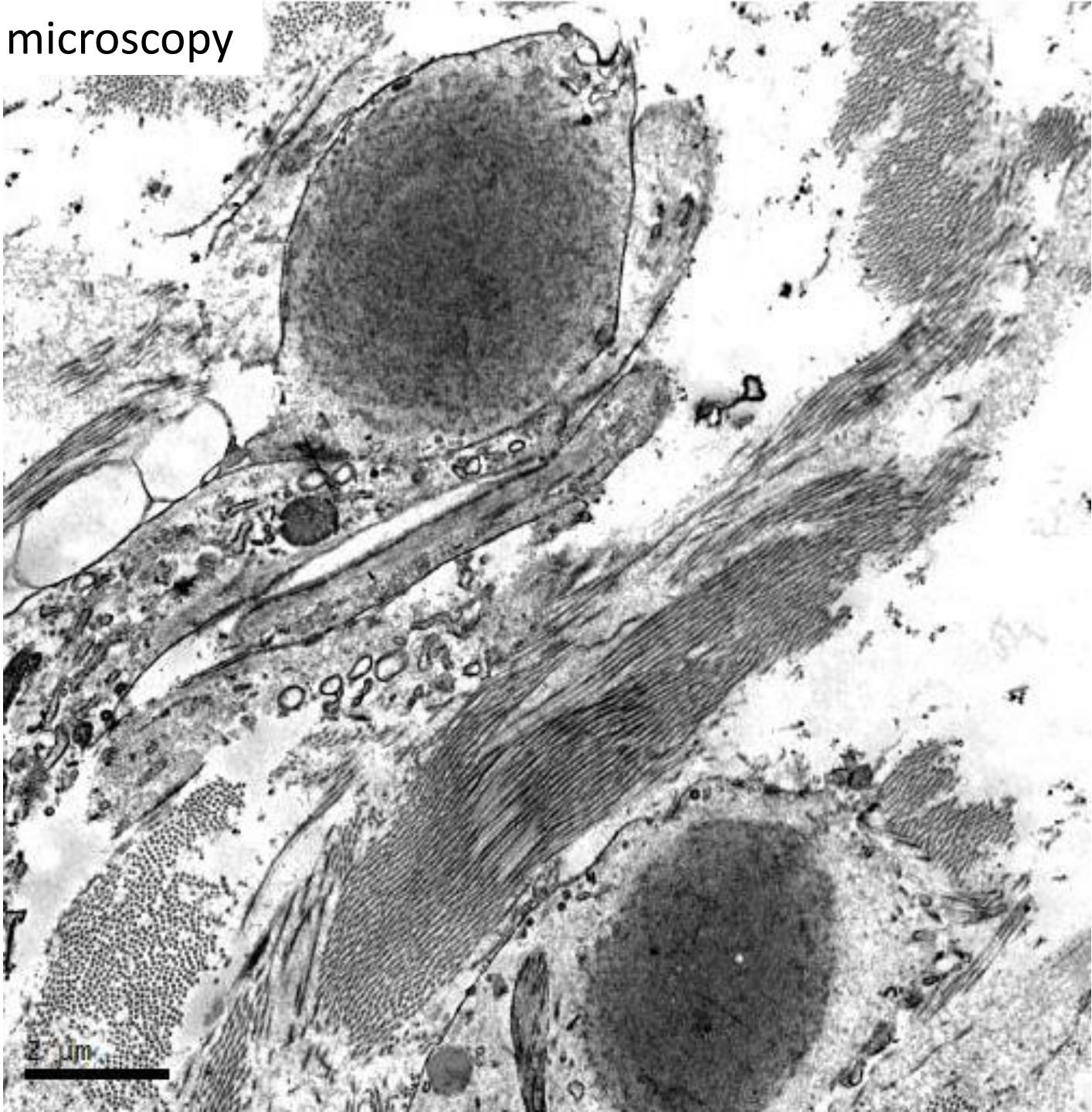
Borderline phyllodes tumour

Intracellular hyaline globules/inclusion bodies in stromal cells

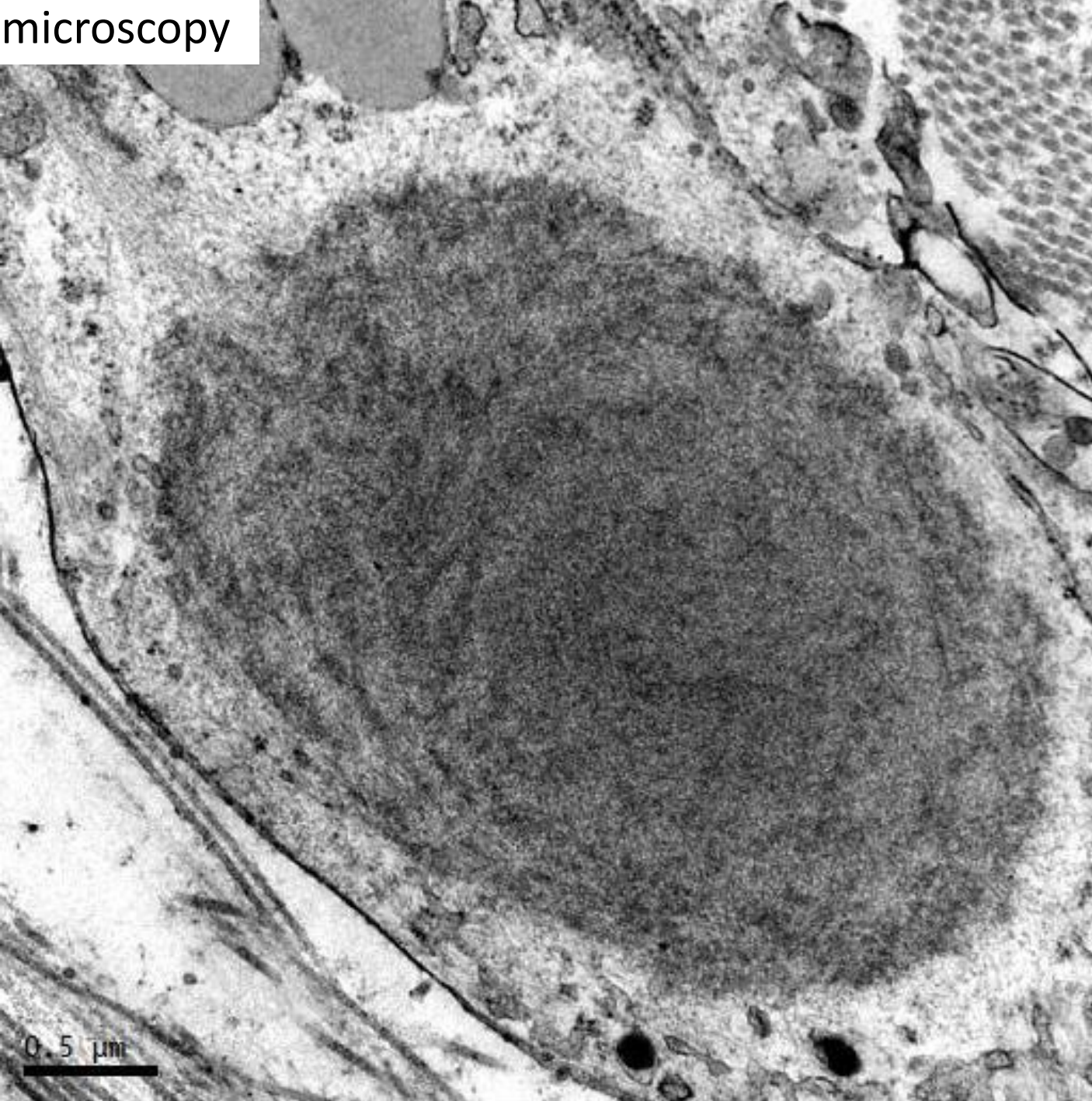


200um

Electron microscopy



Electron microscopy



Intracellular hyaline globules/inclusion bodies in stromal cells of phyllodes tumour

- Inclusion bodies resemble those described in infantile digital fibromatosis.
- Similar inclusion bodies have been rarely described in breast phyllodes tumours:
 - *Hiraoka N et al. Am J Surg Pathol. 1994 May;18(5):506-11.*
 - *Dey D et al. Breast J. 2008 Mar-Apr;14(2):198-9.*
- Ultrastructurally represent modified intracellular or aggregated intermediate (actin) filaments.