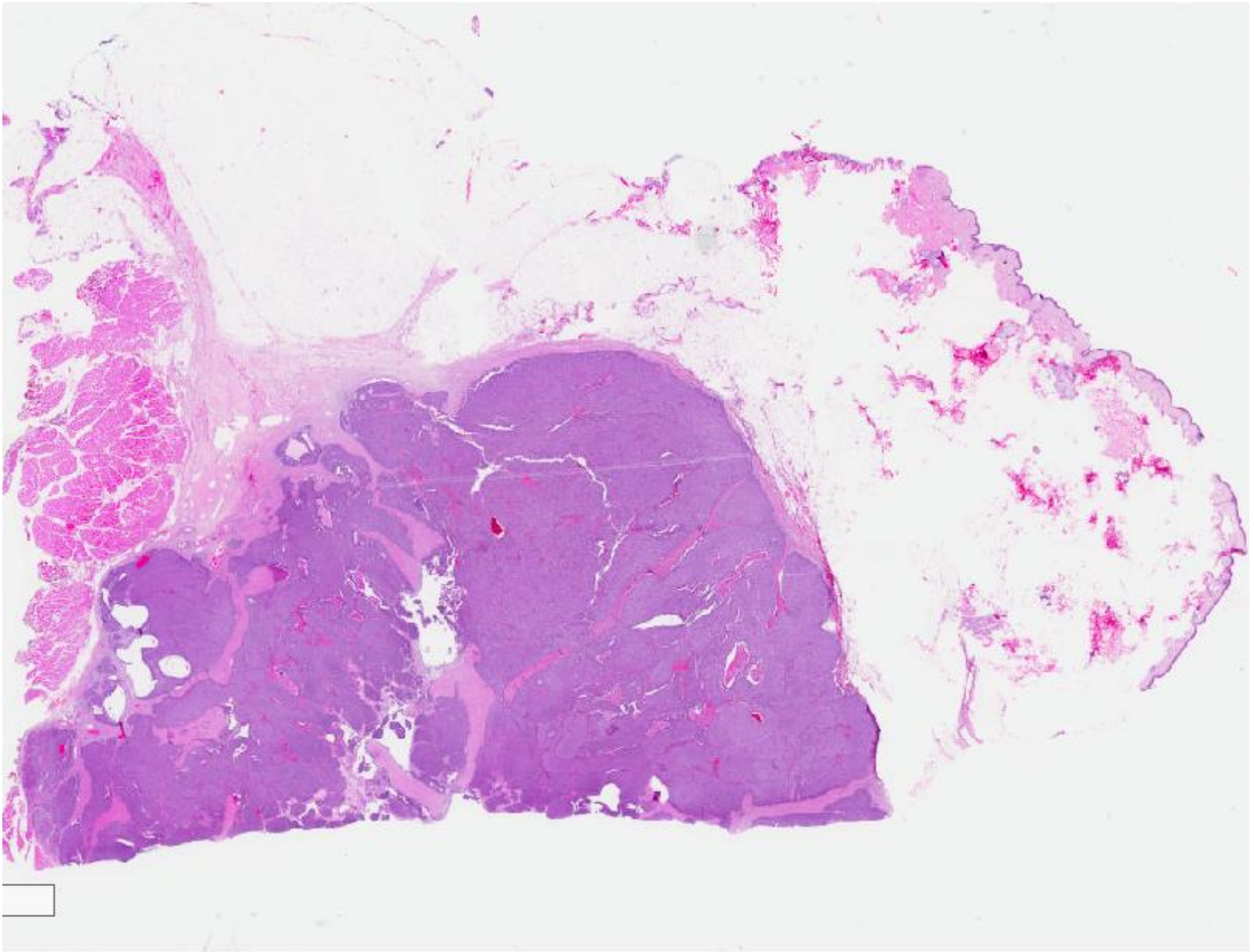
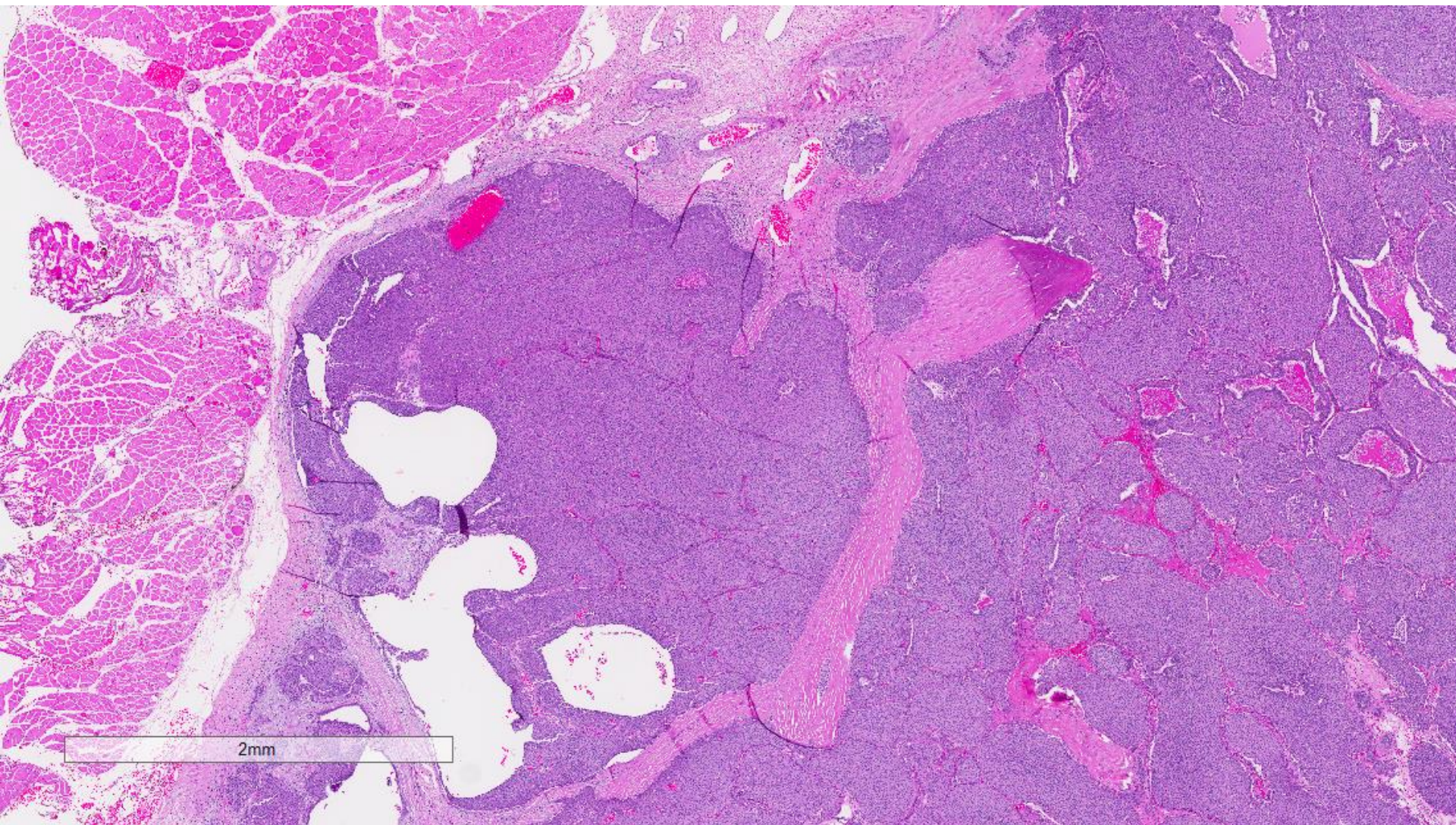


Case 44

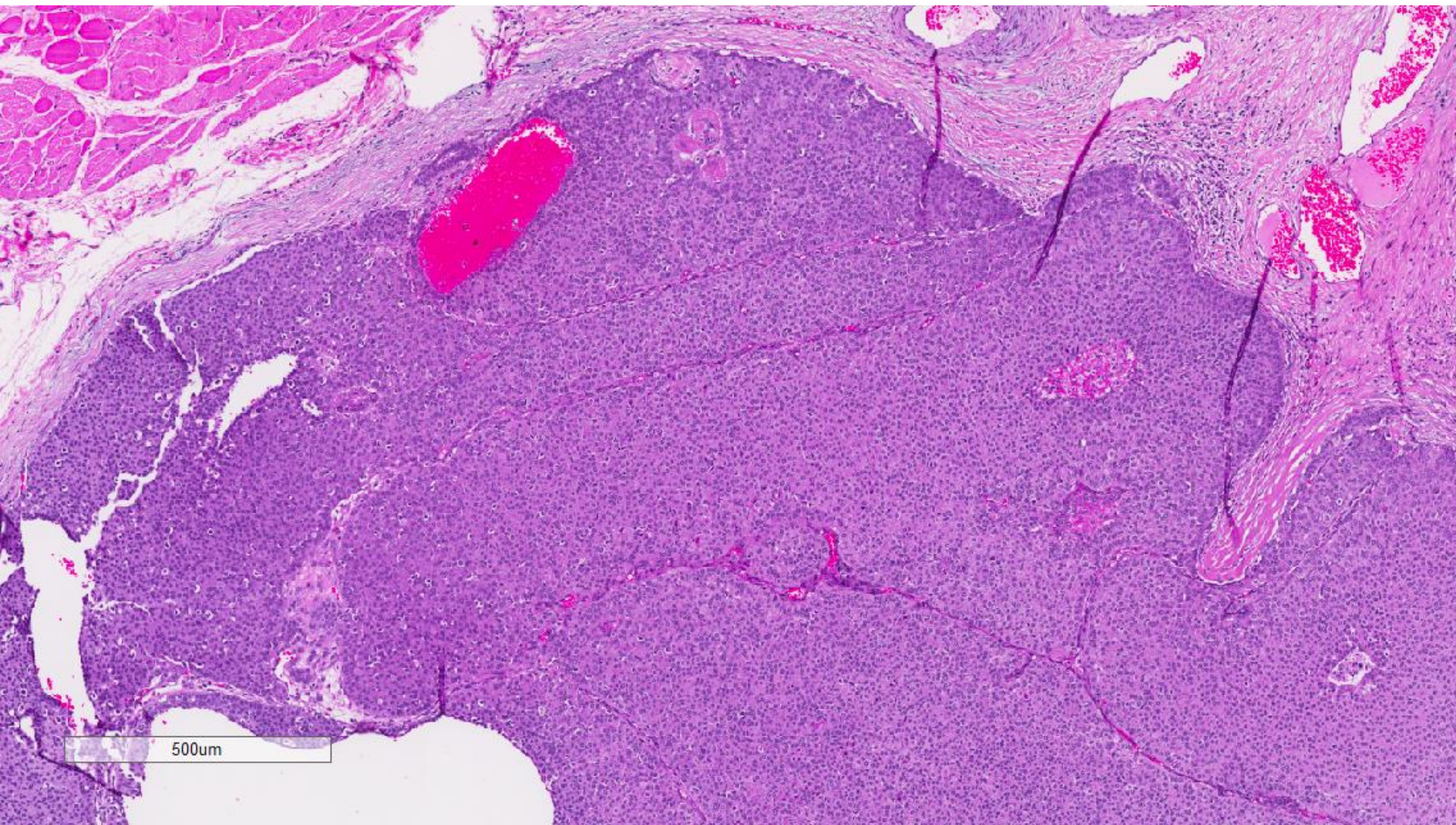
68 year old lady with past history of left mastectomy for ductal carcinoma in situ, presented with a recurrent mass over the left chest wall.

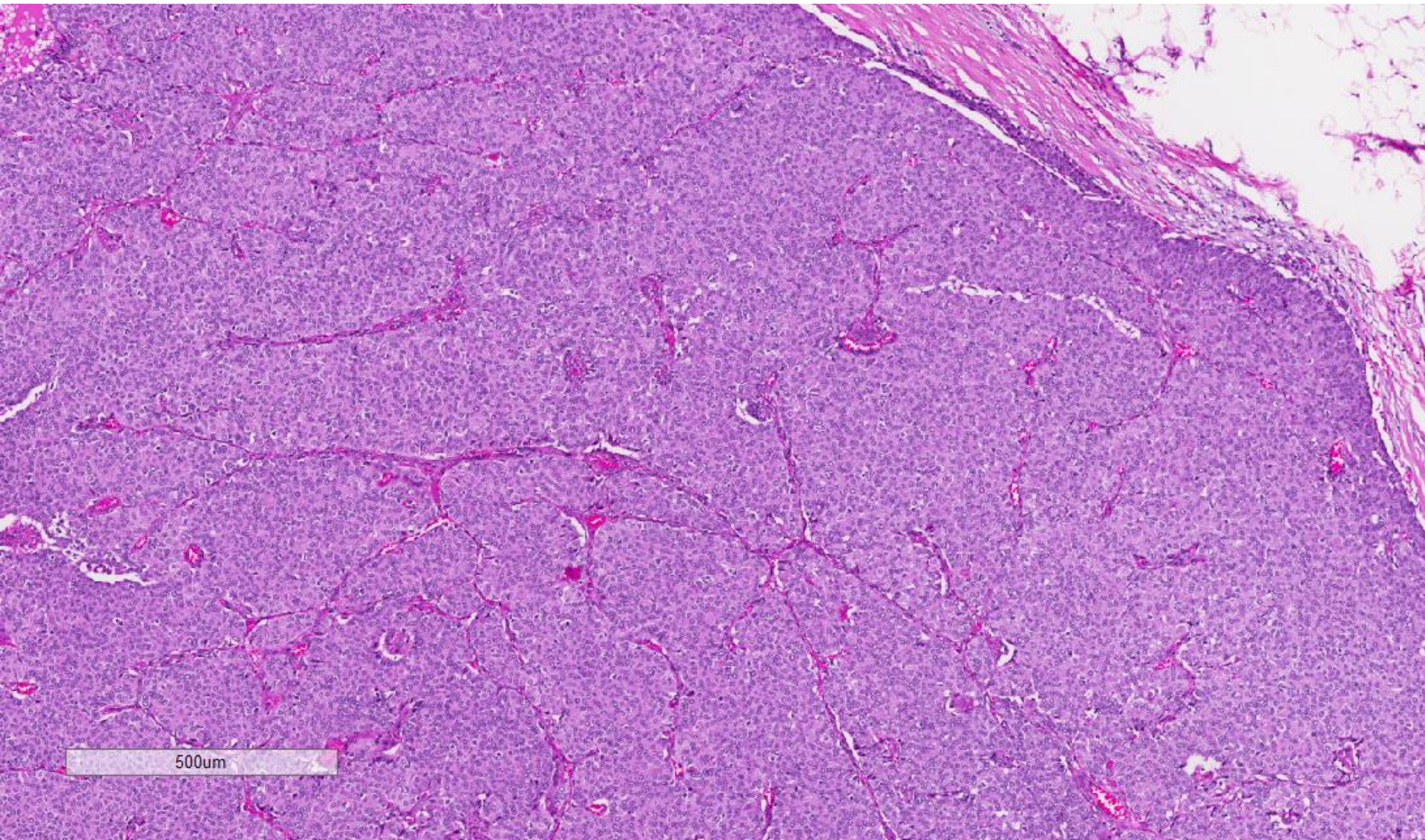
A wide excision was performed.



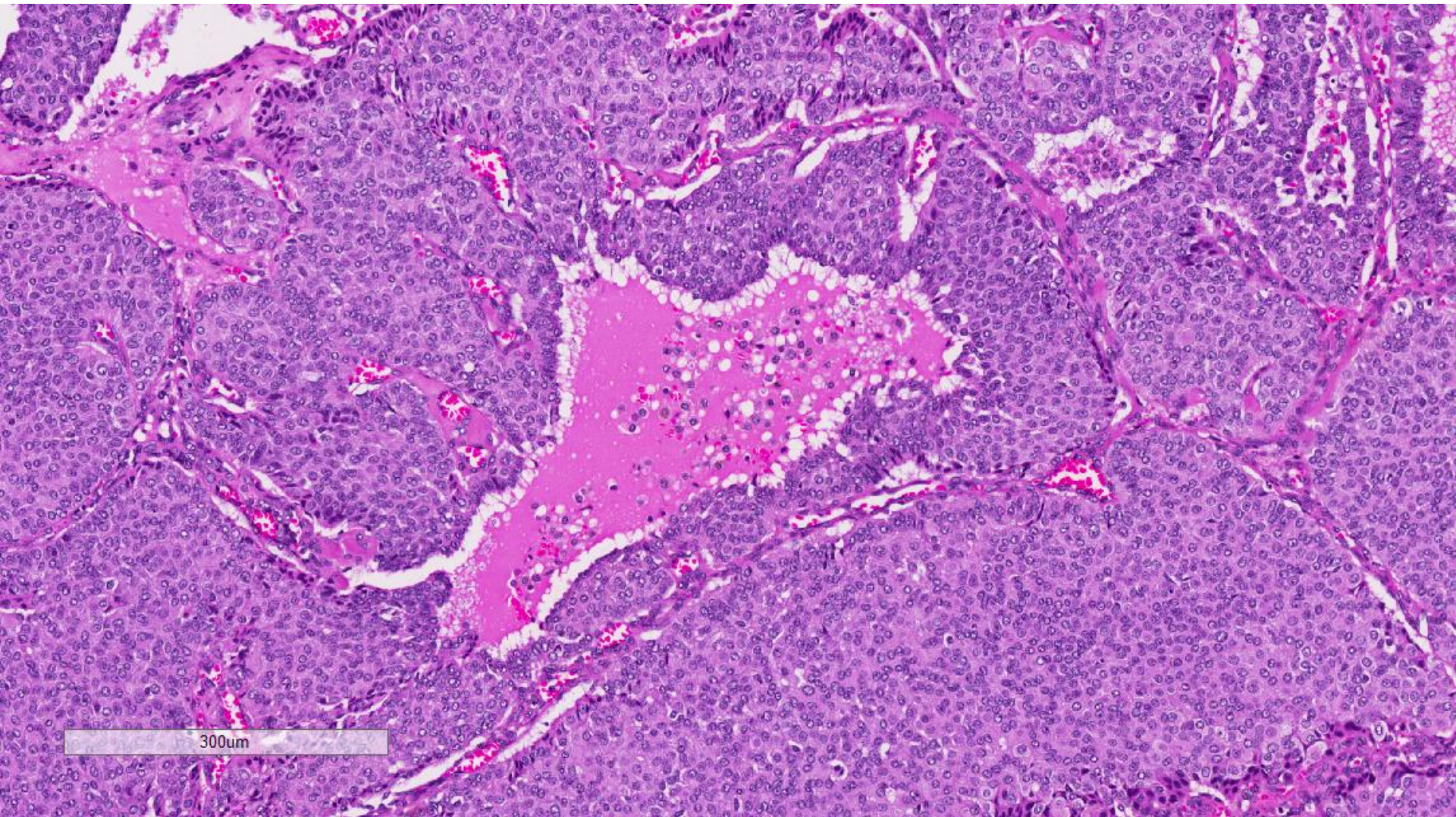


2mm

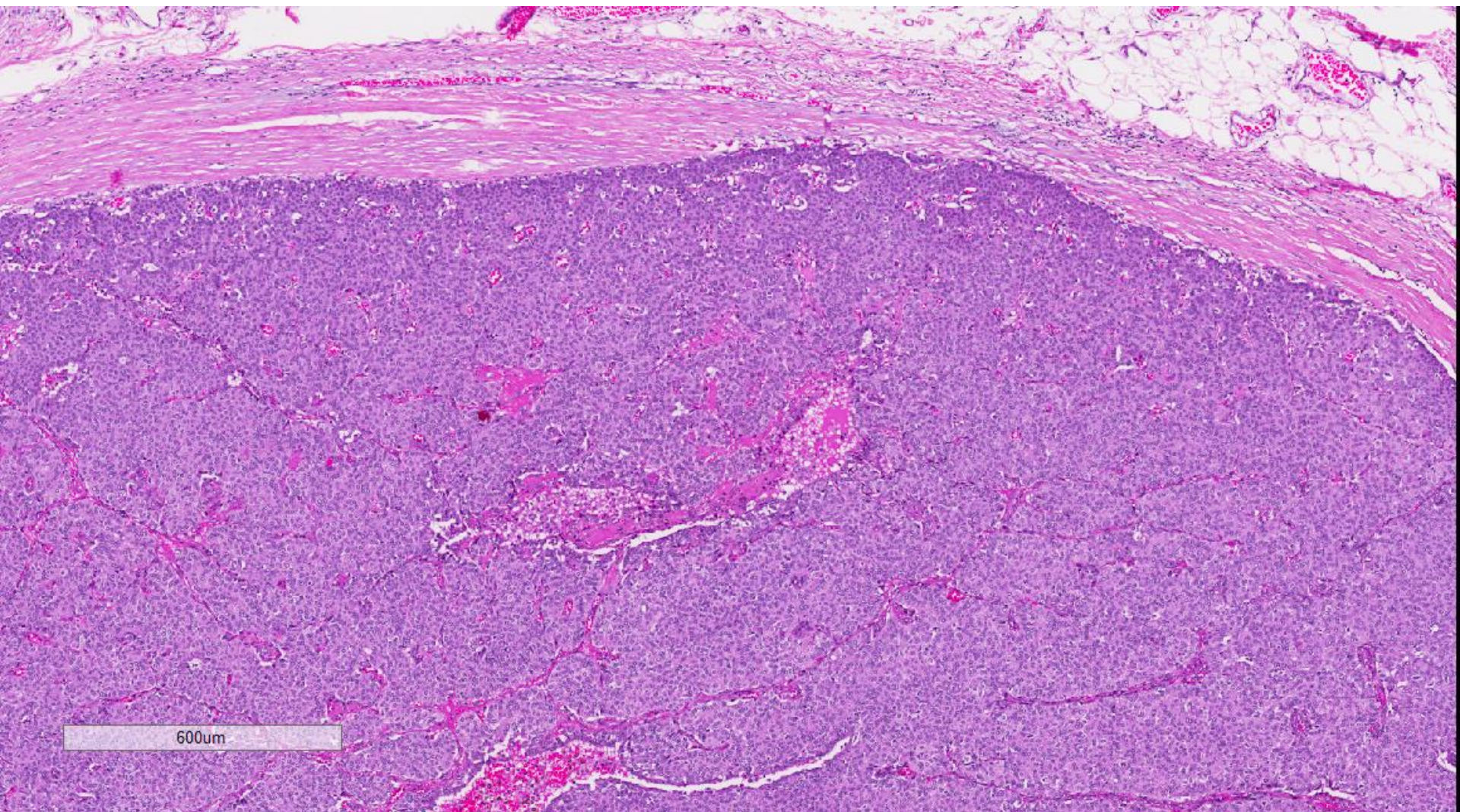


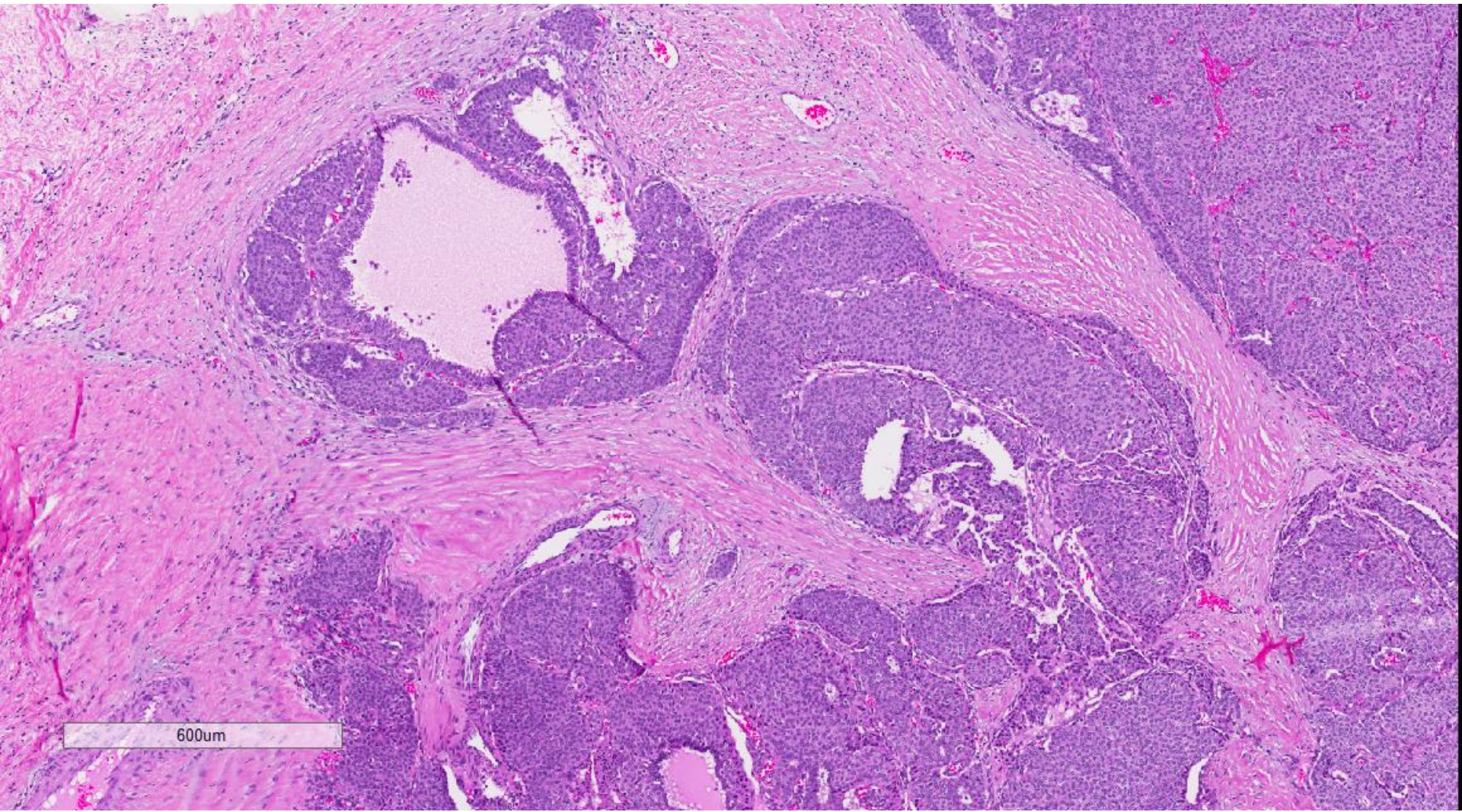


500um

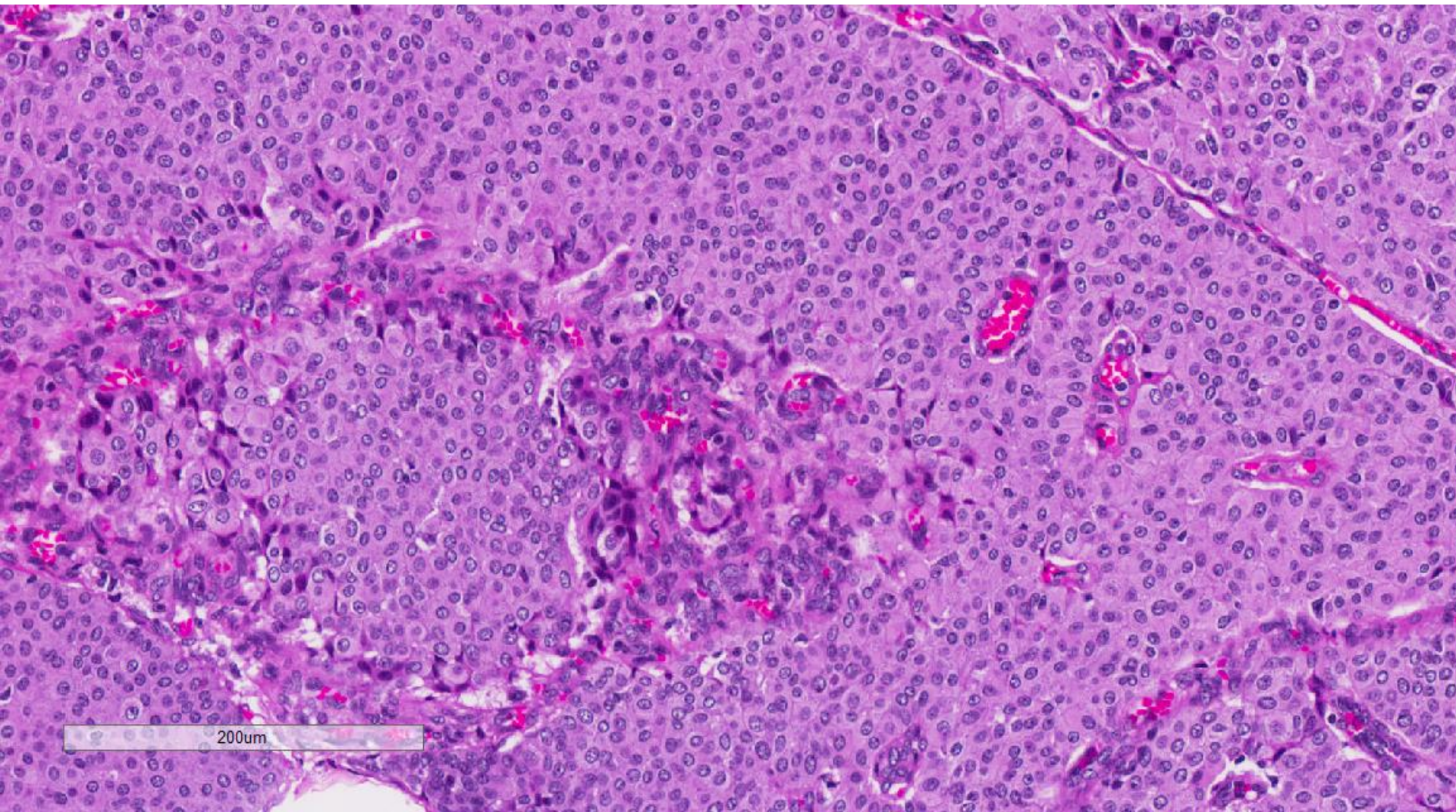


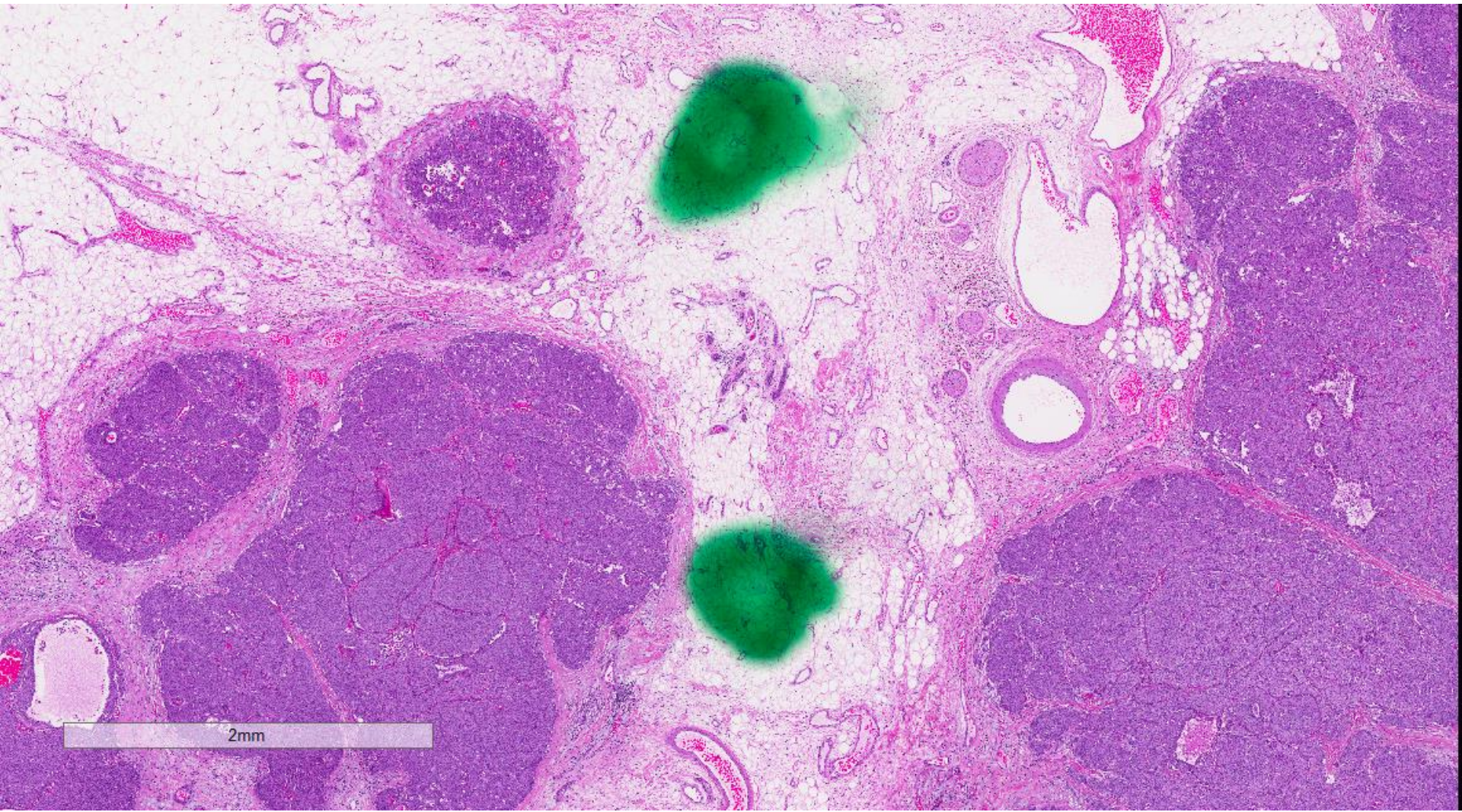
300µm

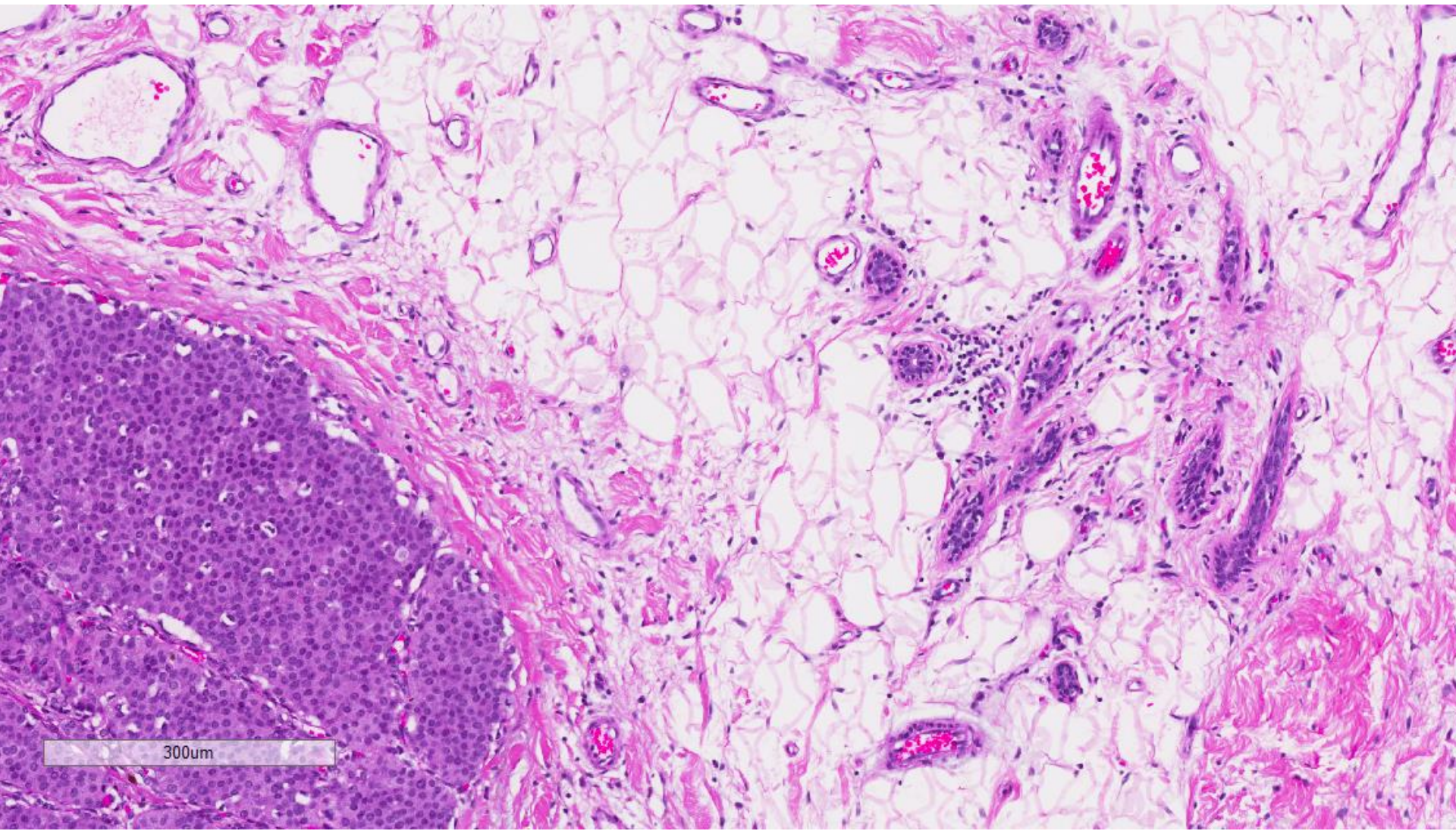




600um

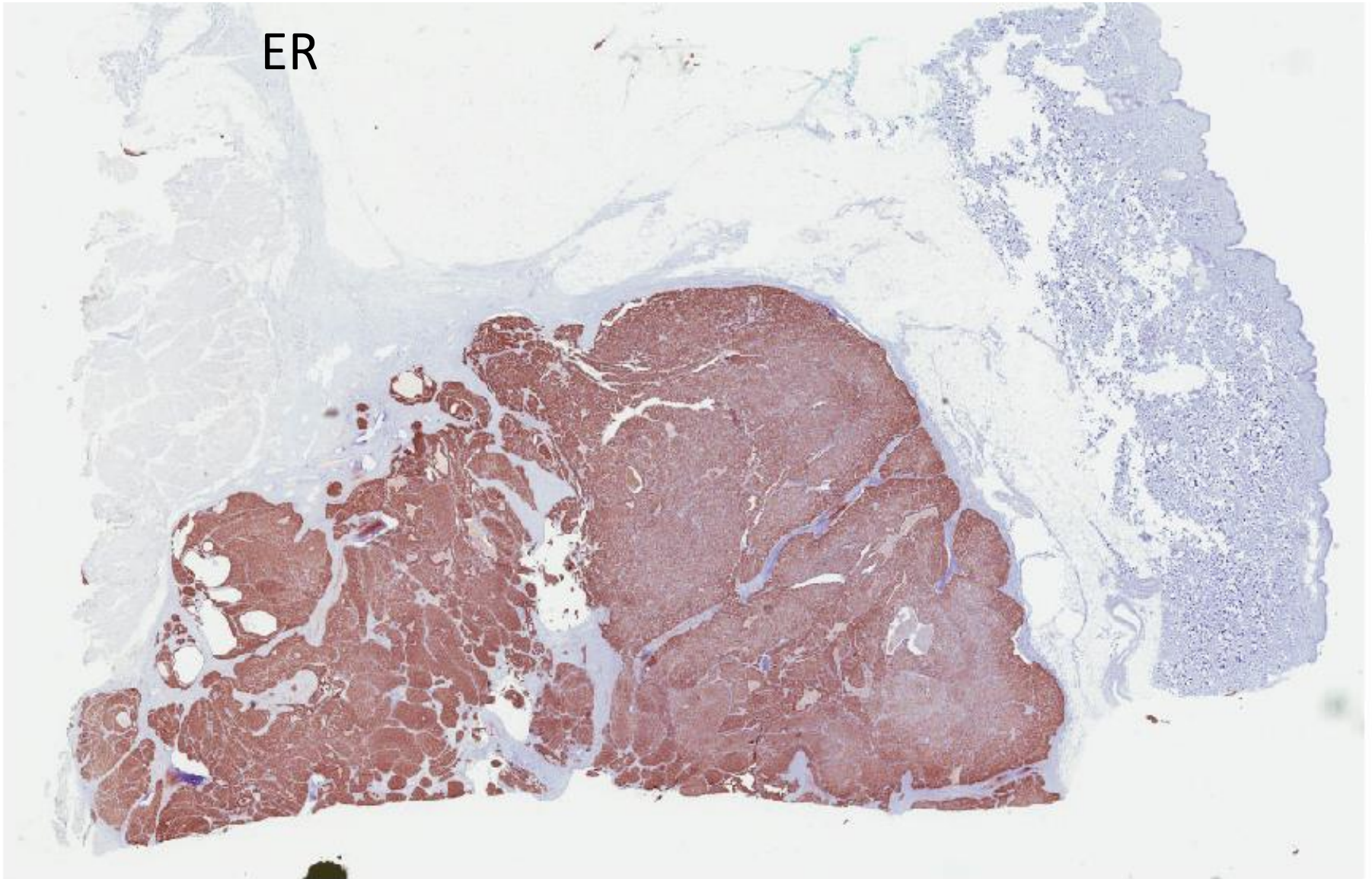






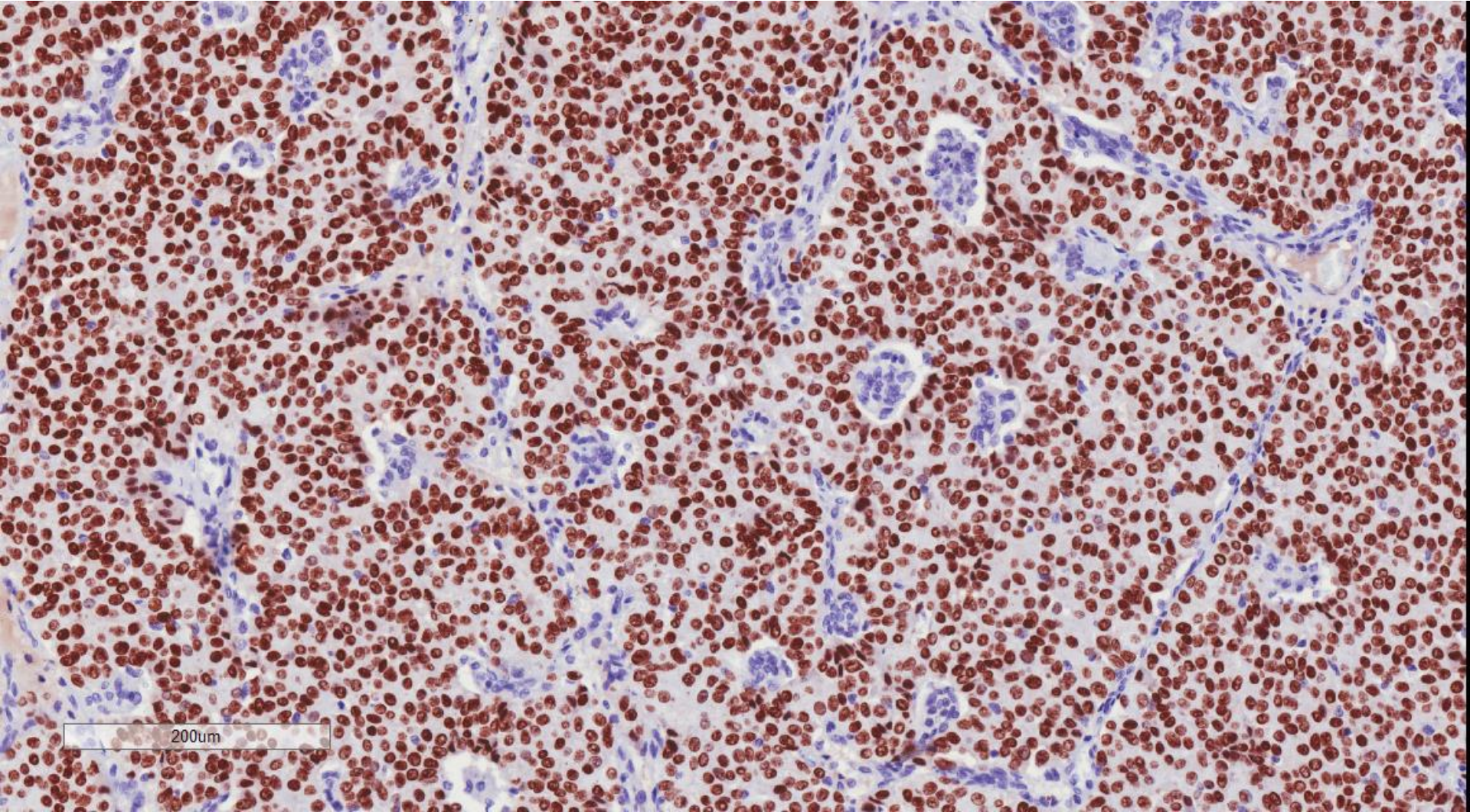
300um

ER

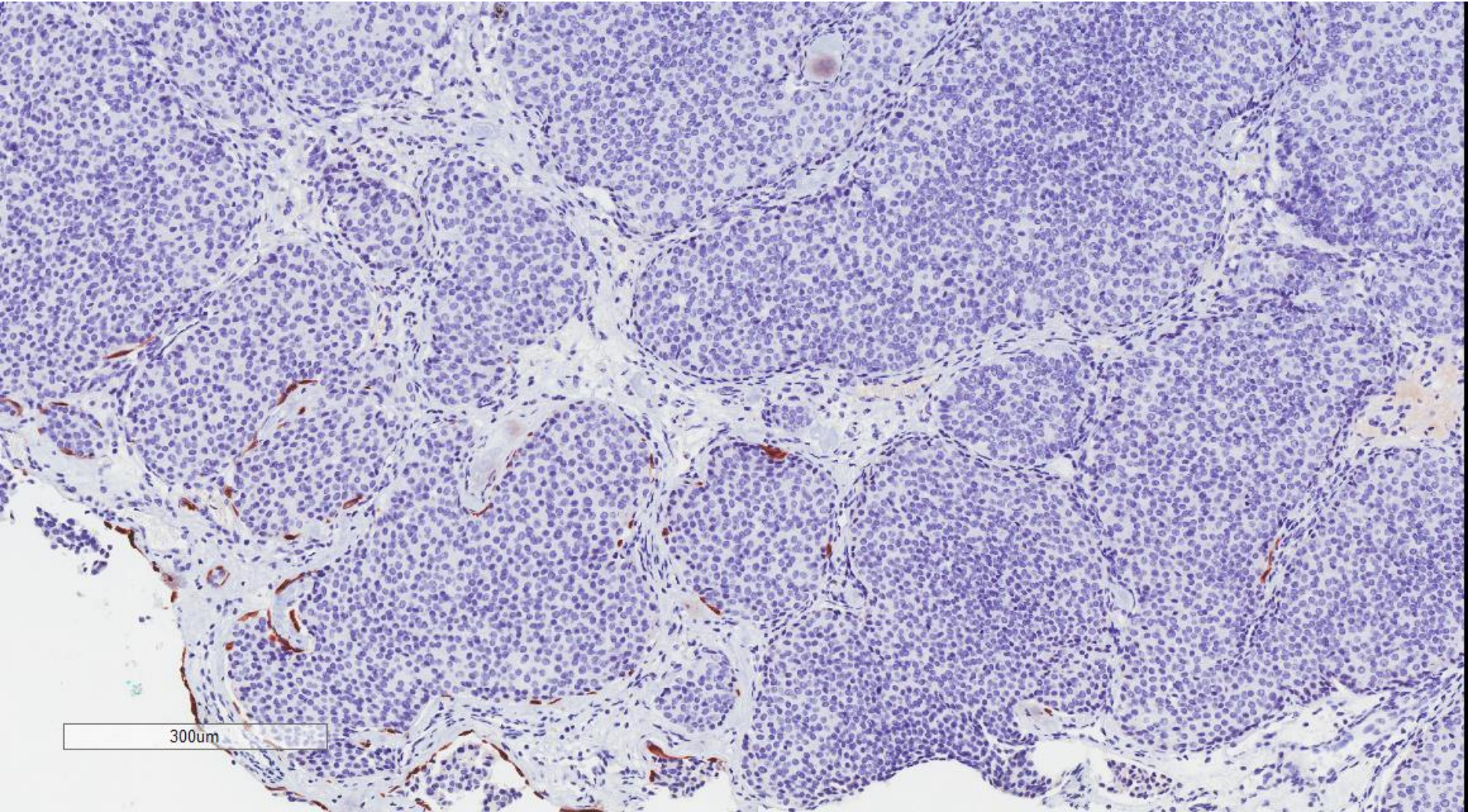


7mm

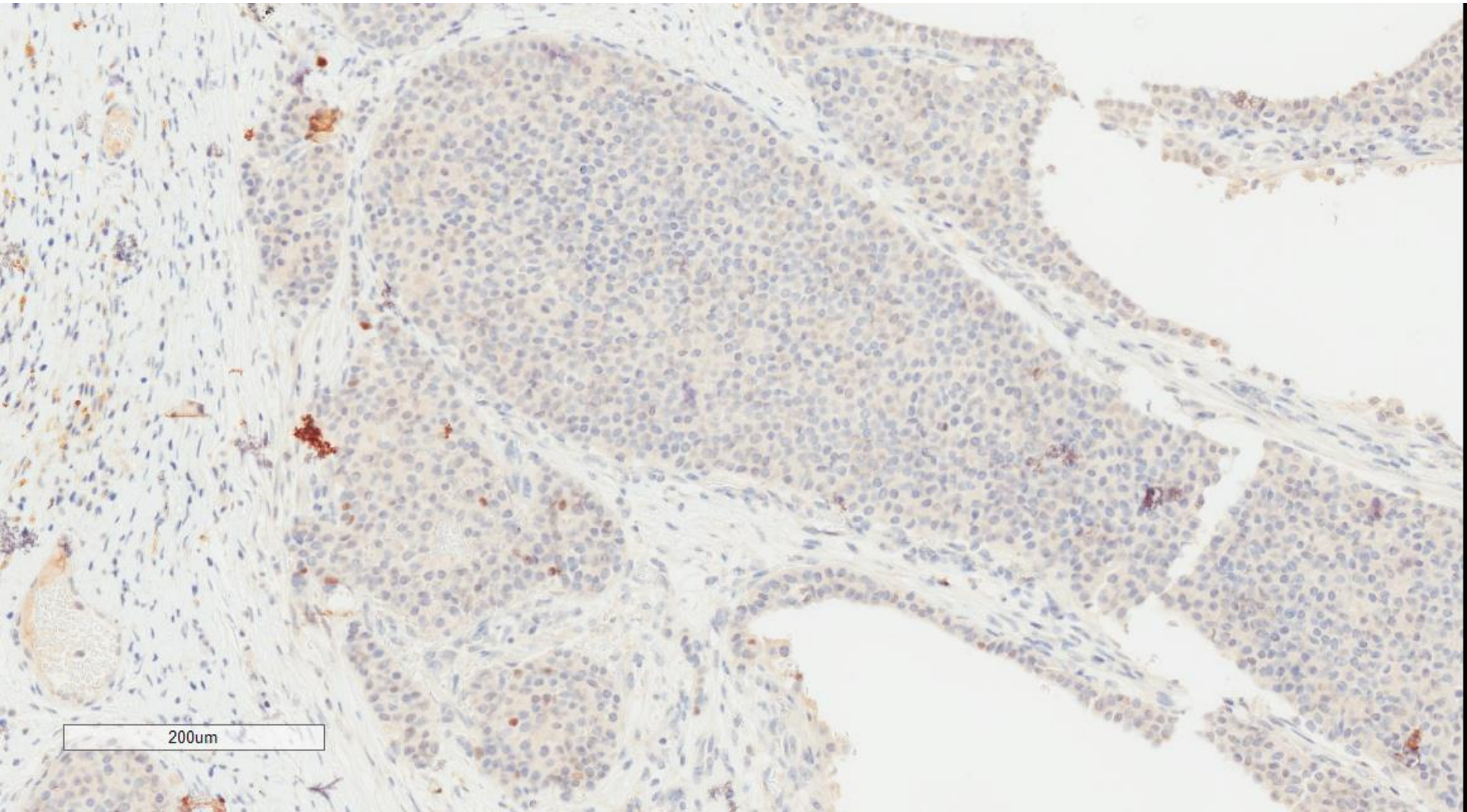
ER



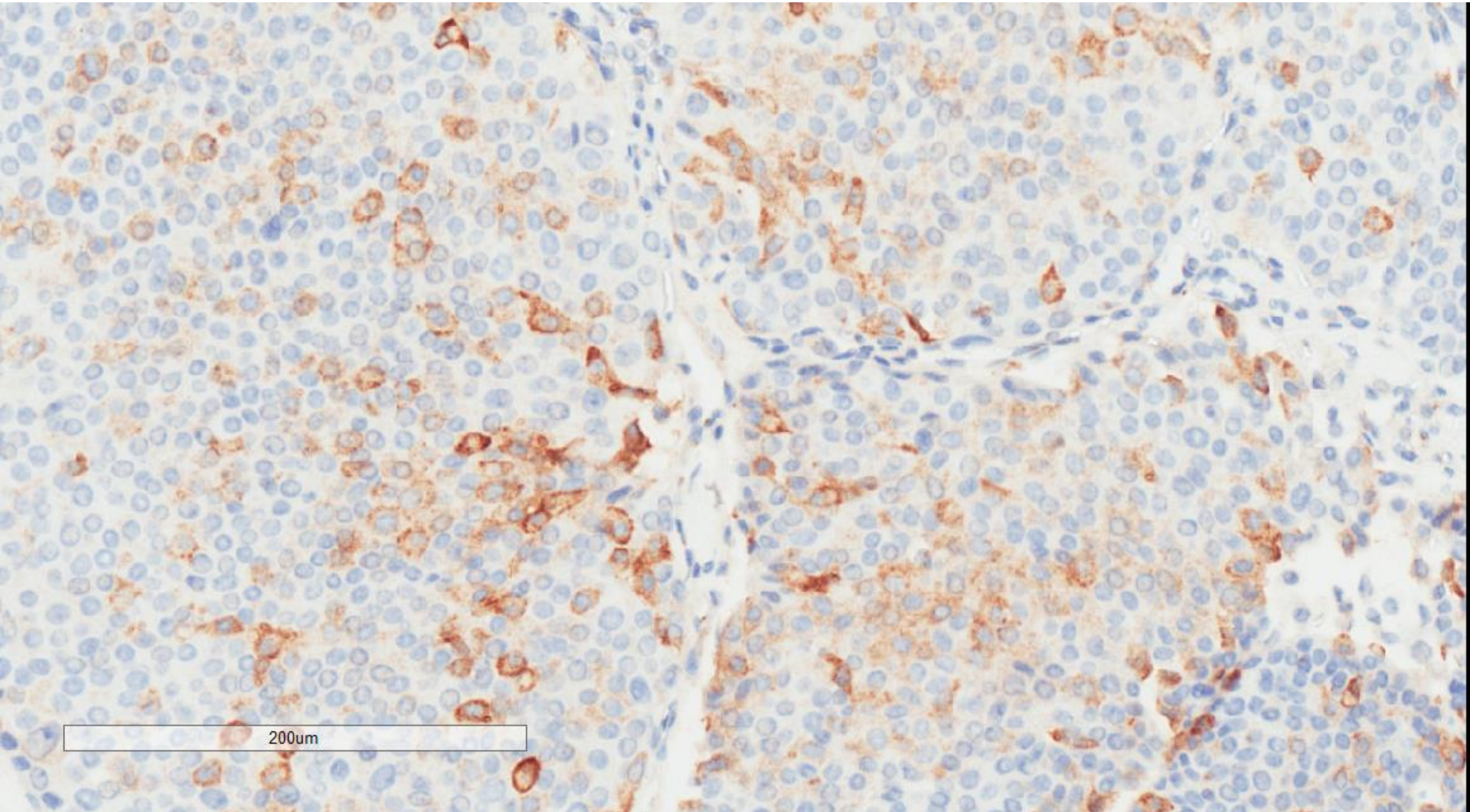
CK5/6



p63



synaptophysin



Invasive solid-papillary carcinoma with
neuroendocrine differentiation, grade 2,
60 mm

ER positive, PR positive, cerbB2 negative