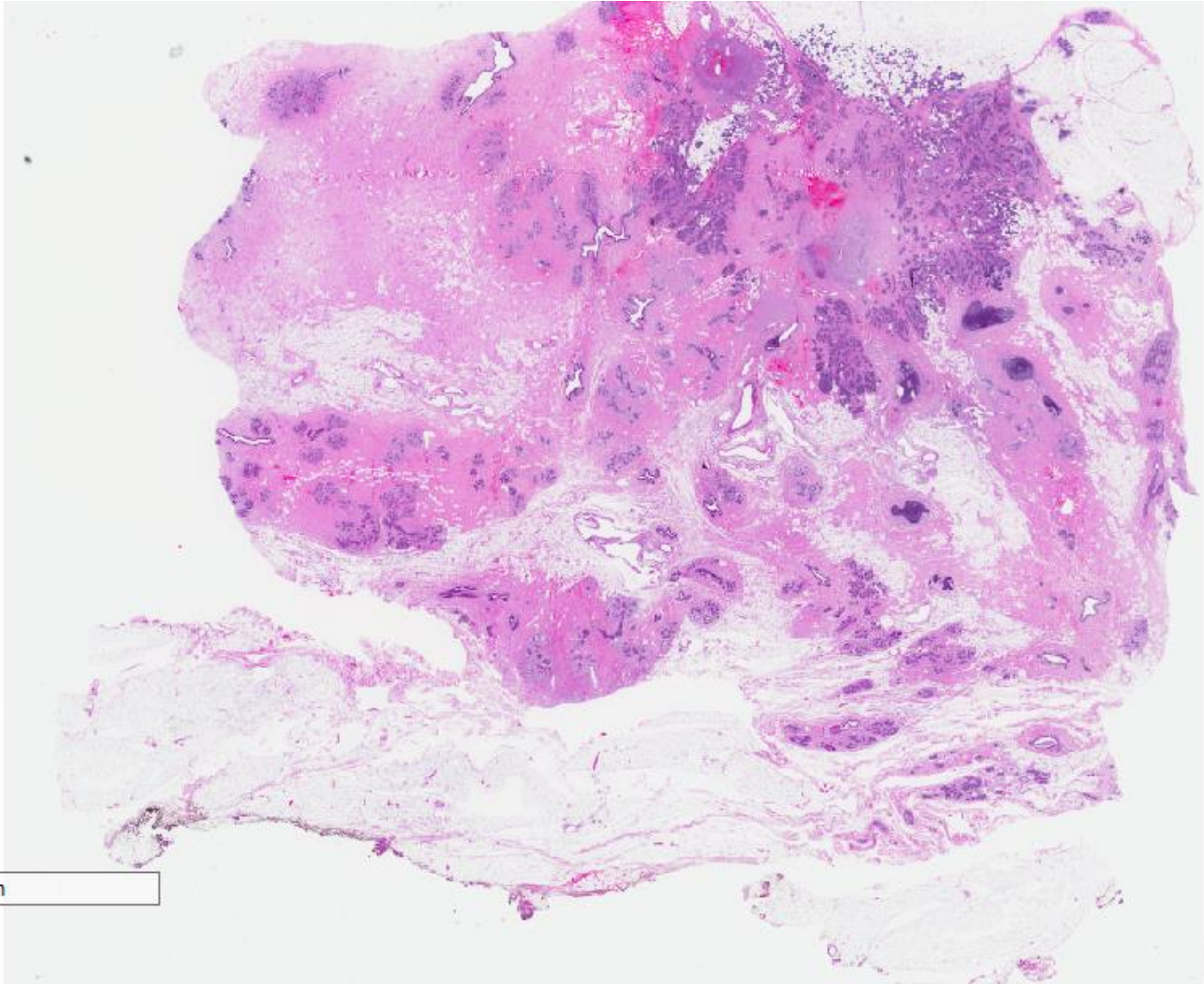


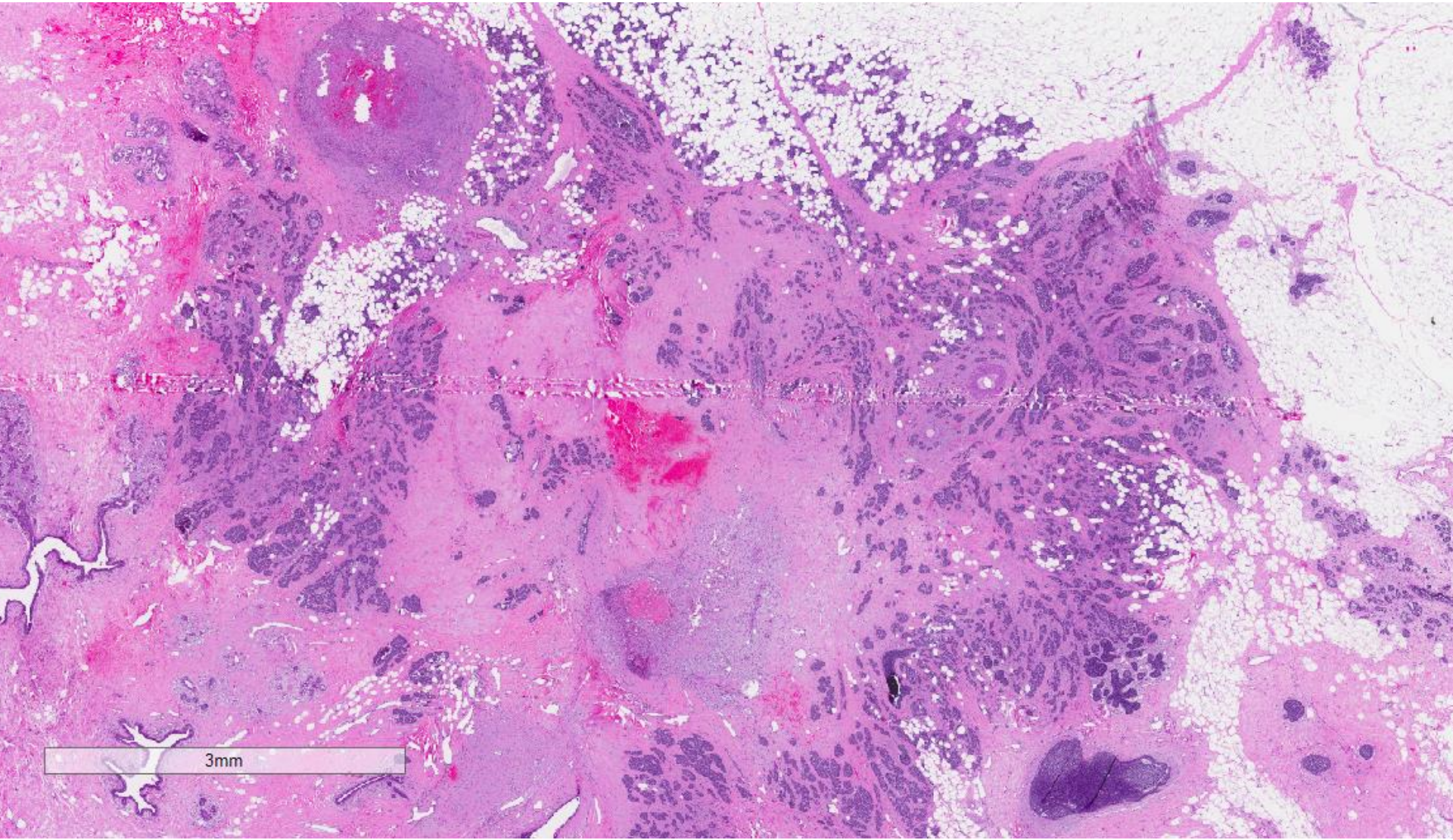
## Case 41

51 year old lady underwent mastectomy  
for a right breast mass.

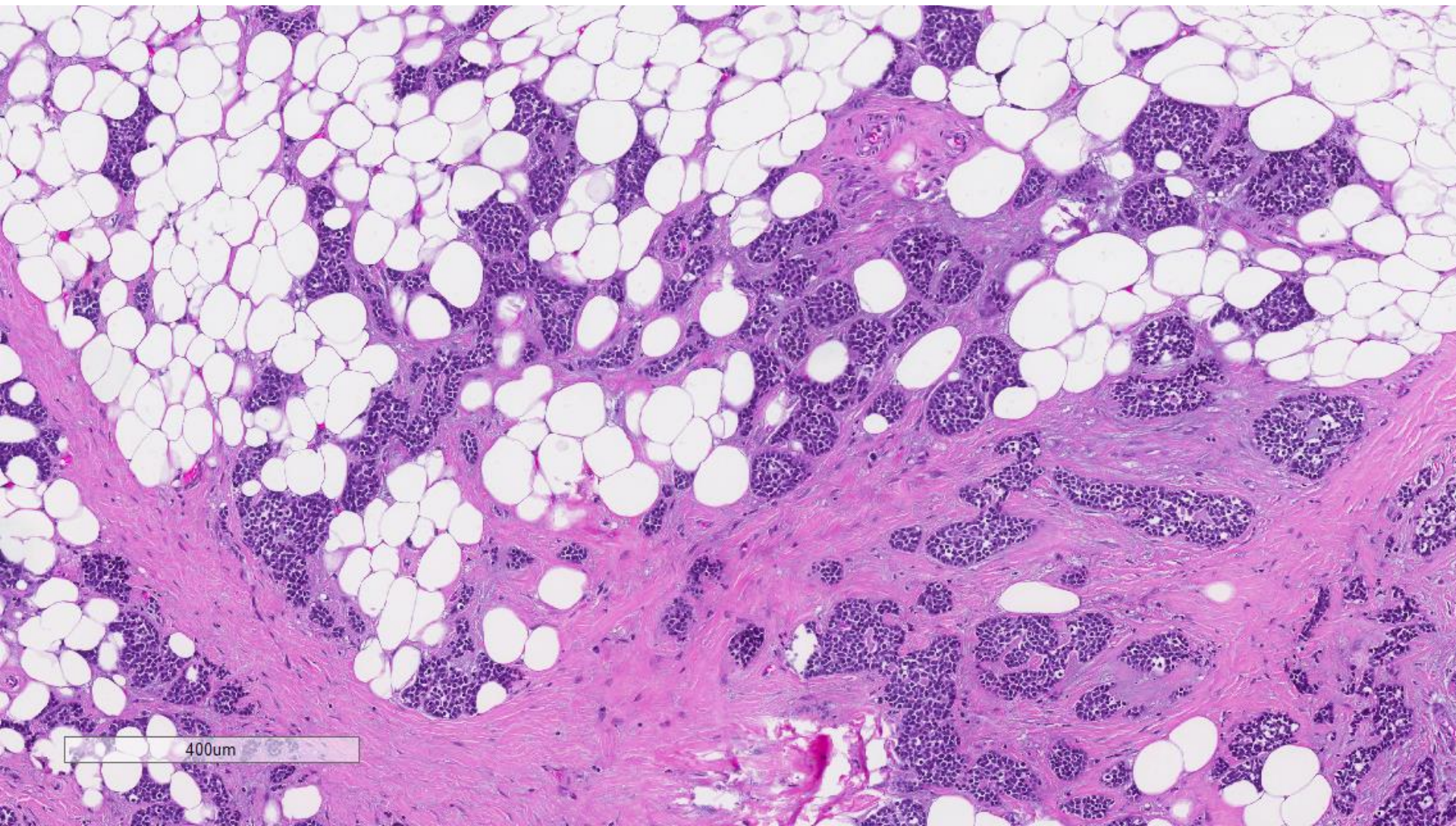


8mm



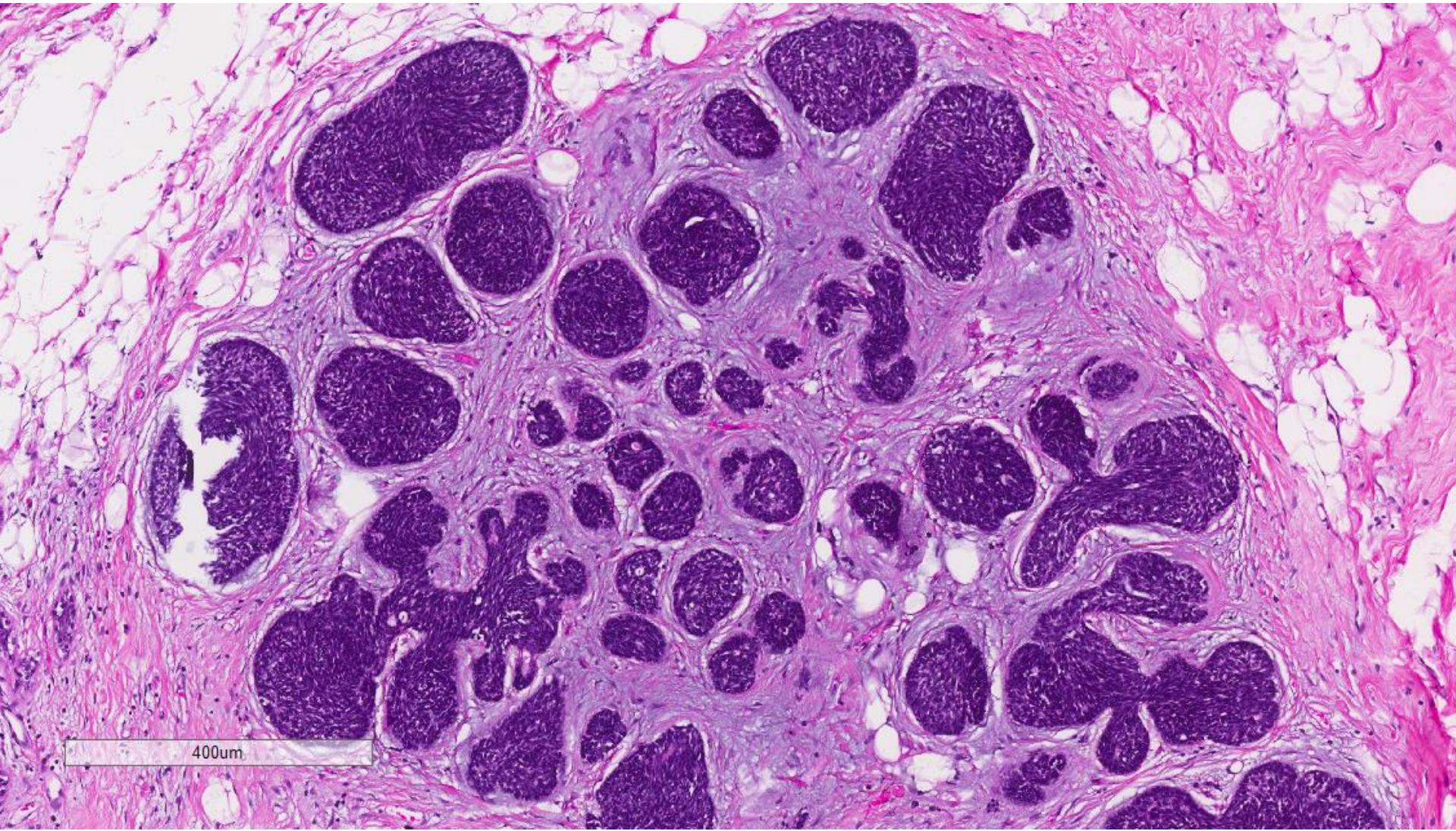






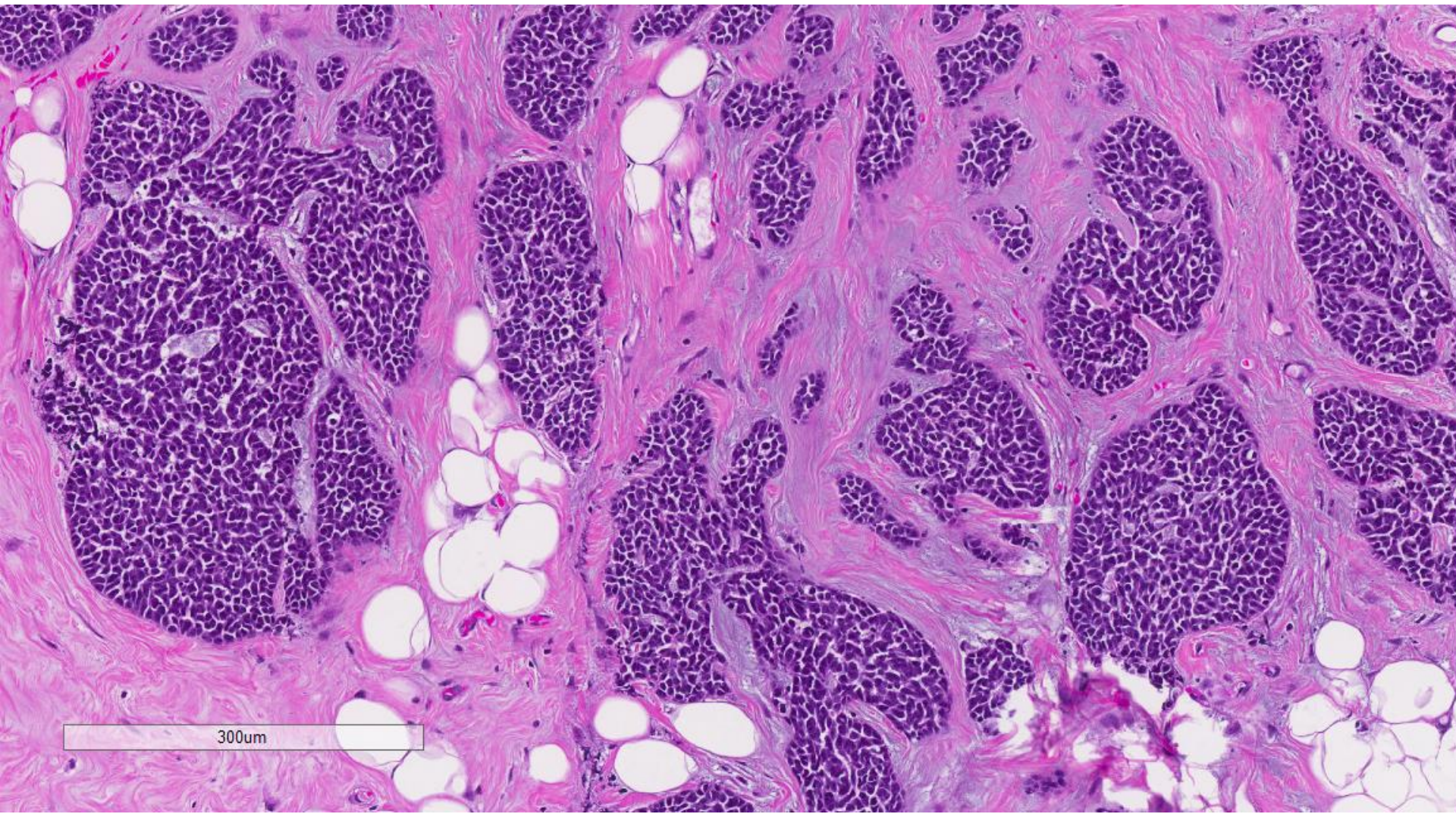
400um





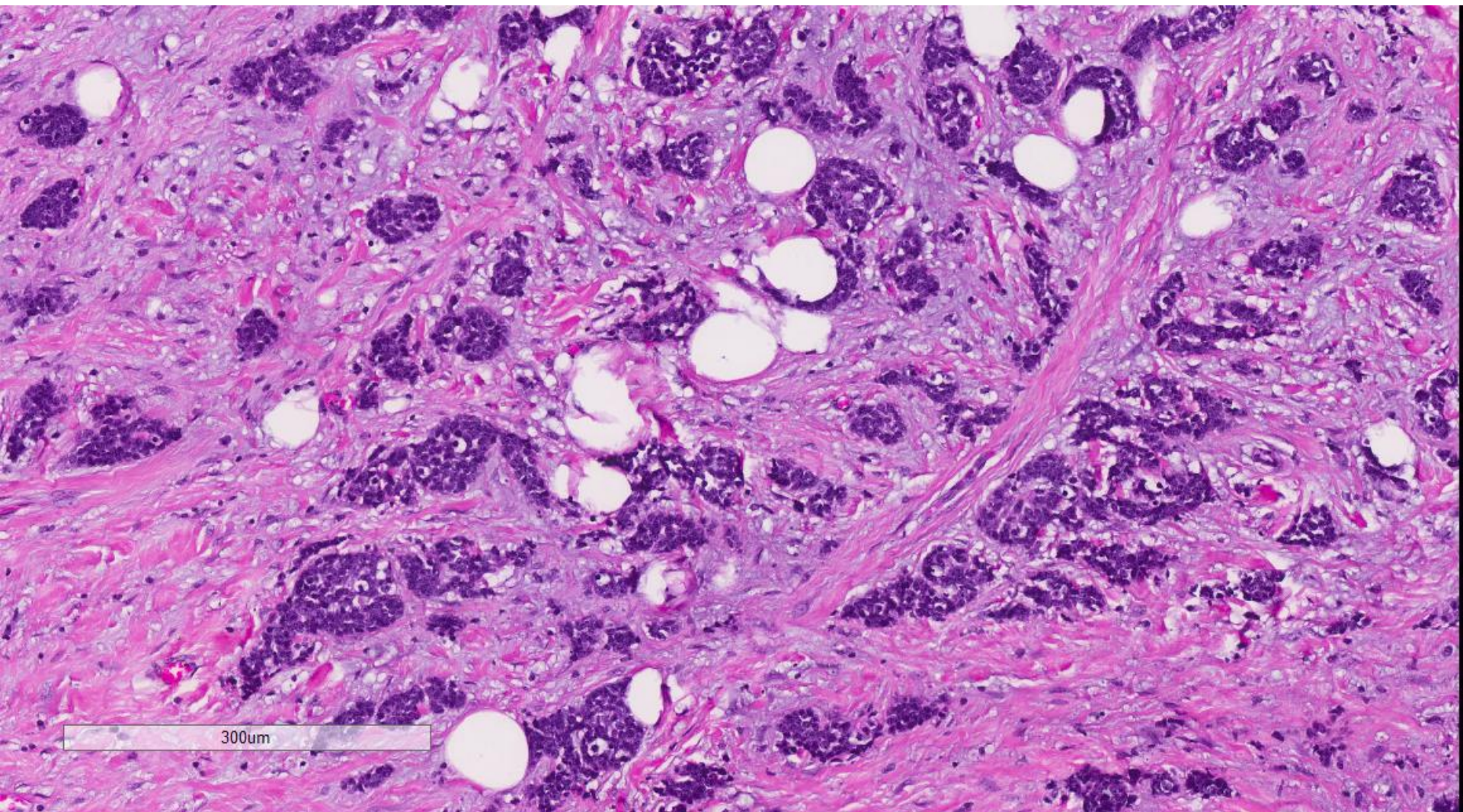
400um



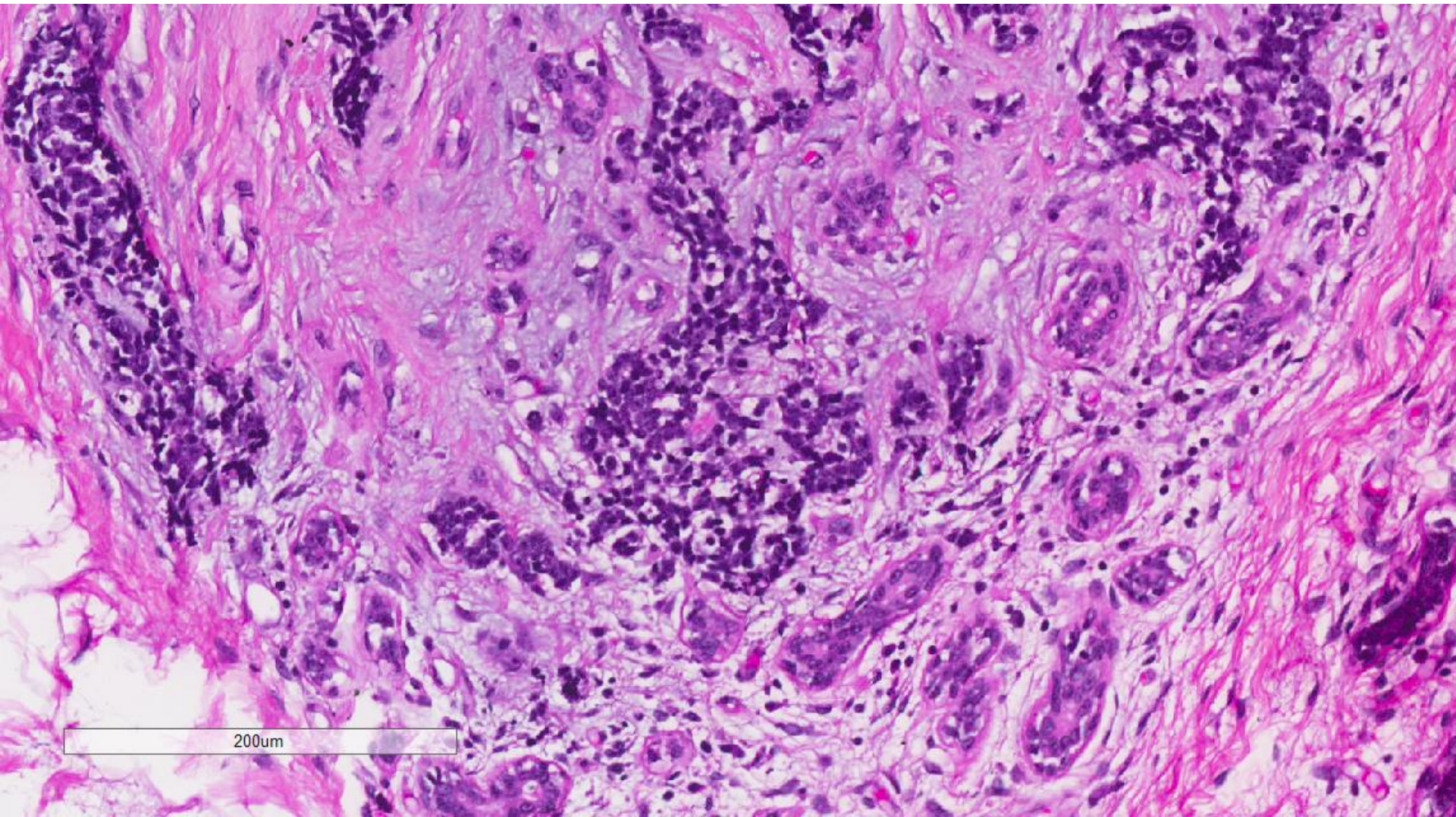


300um

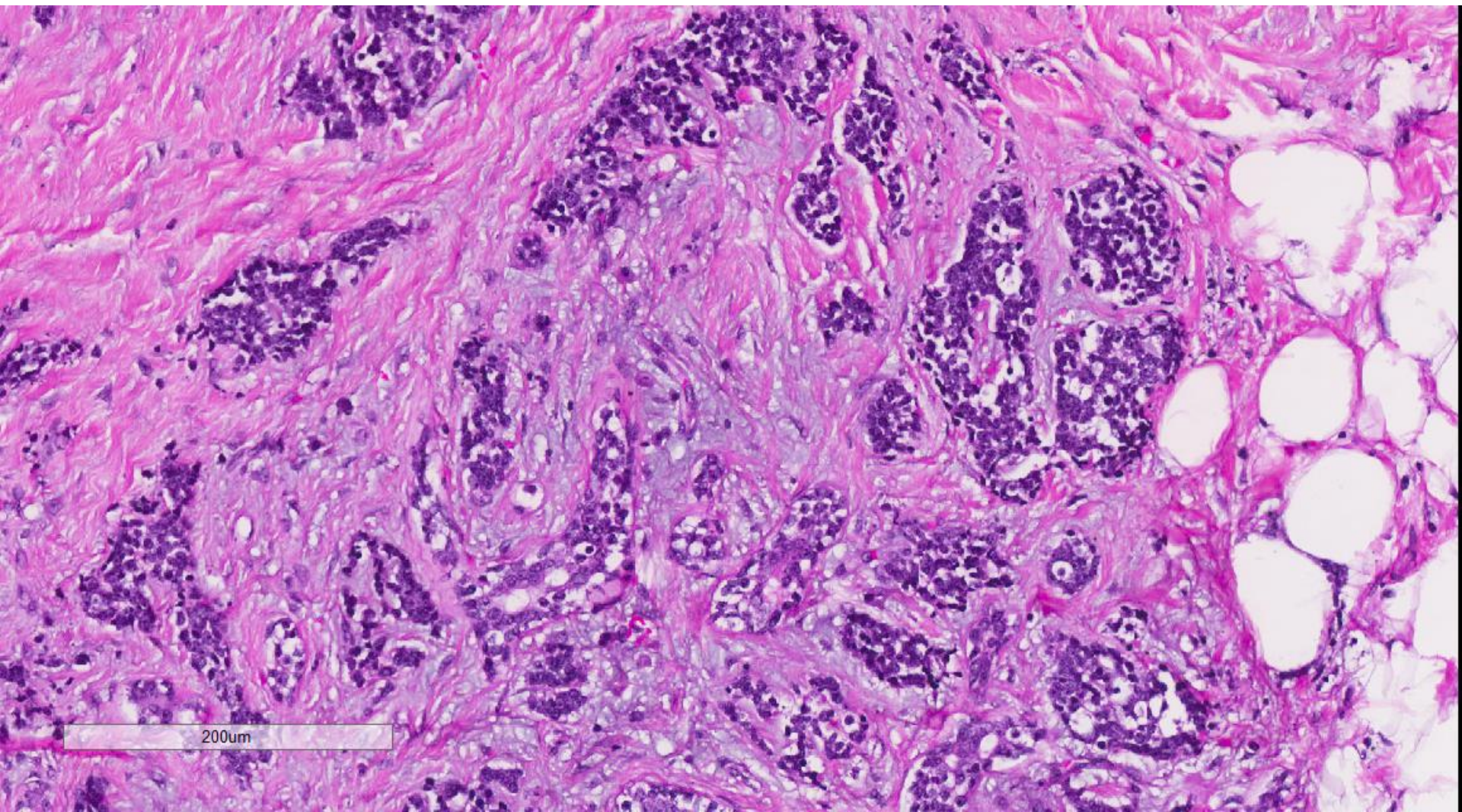






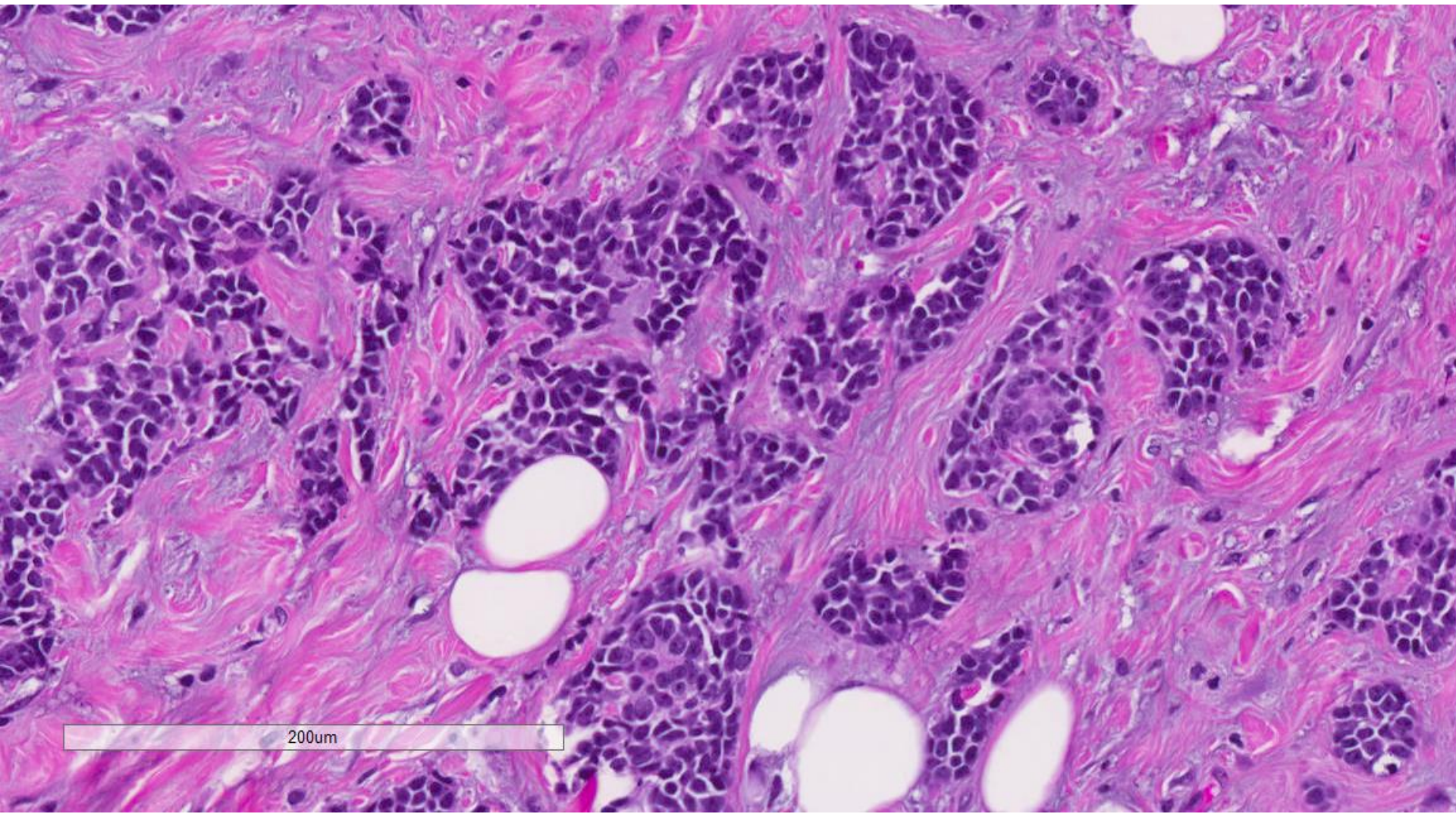






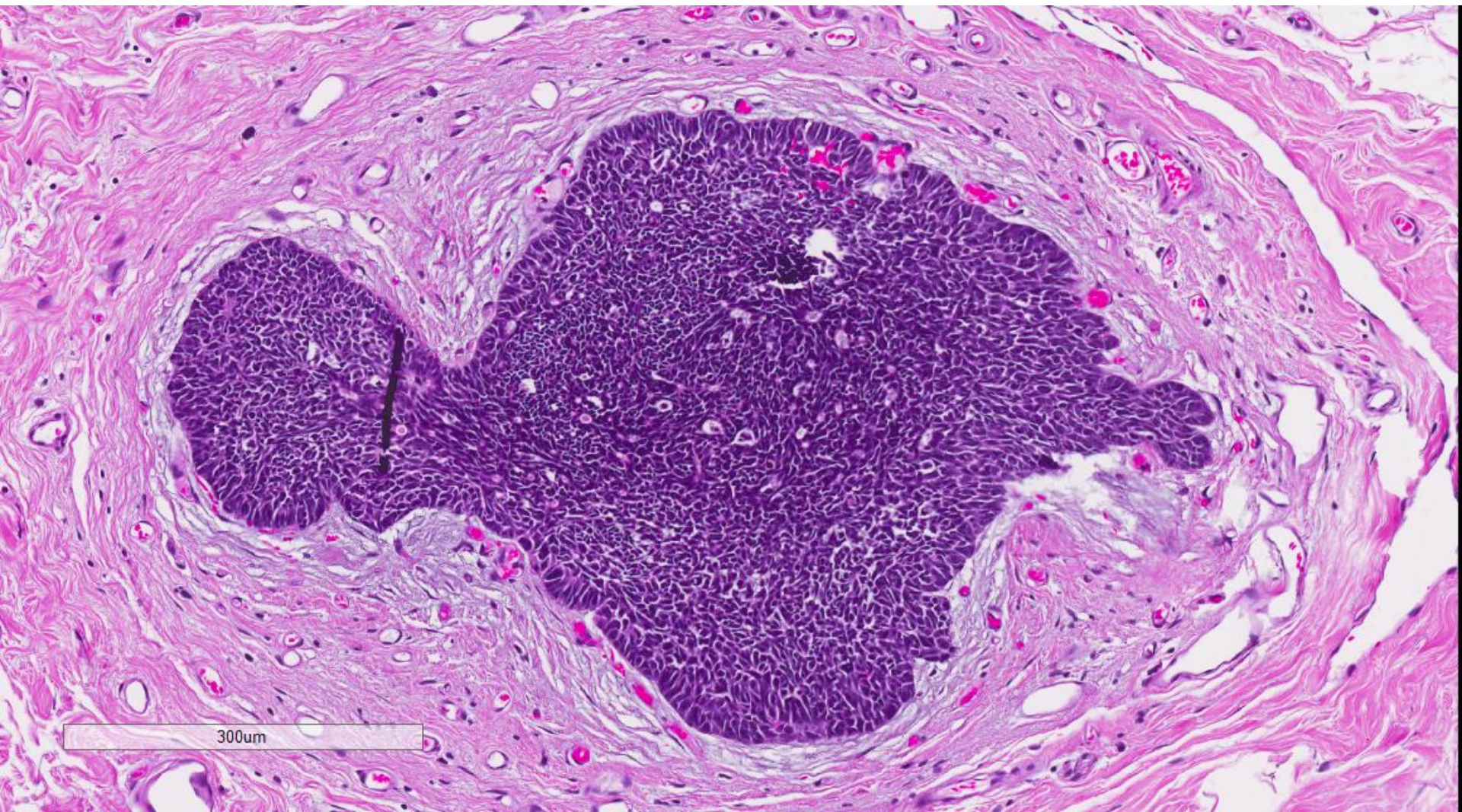
200um





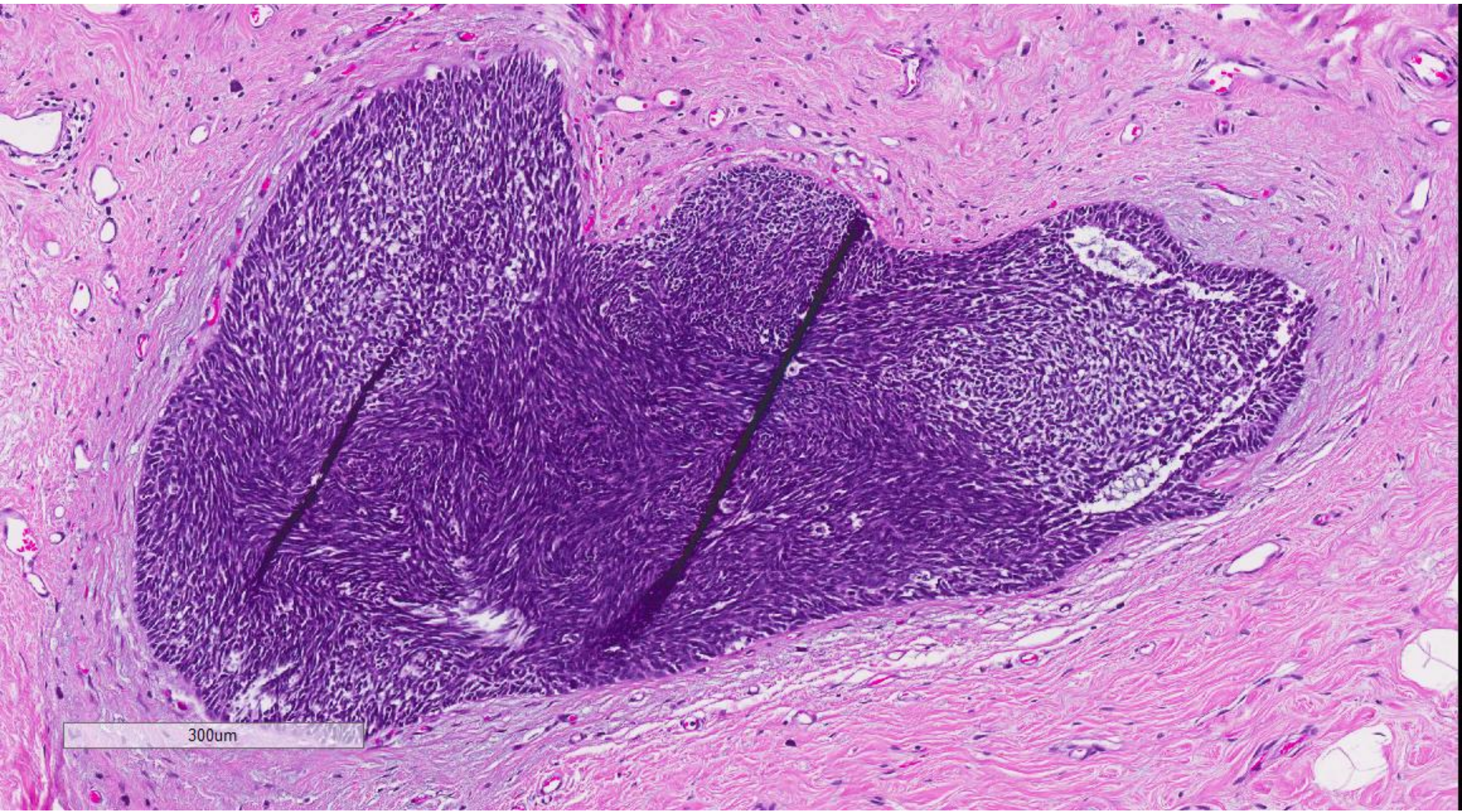
200um





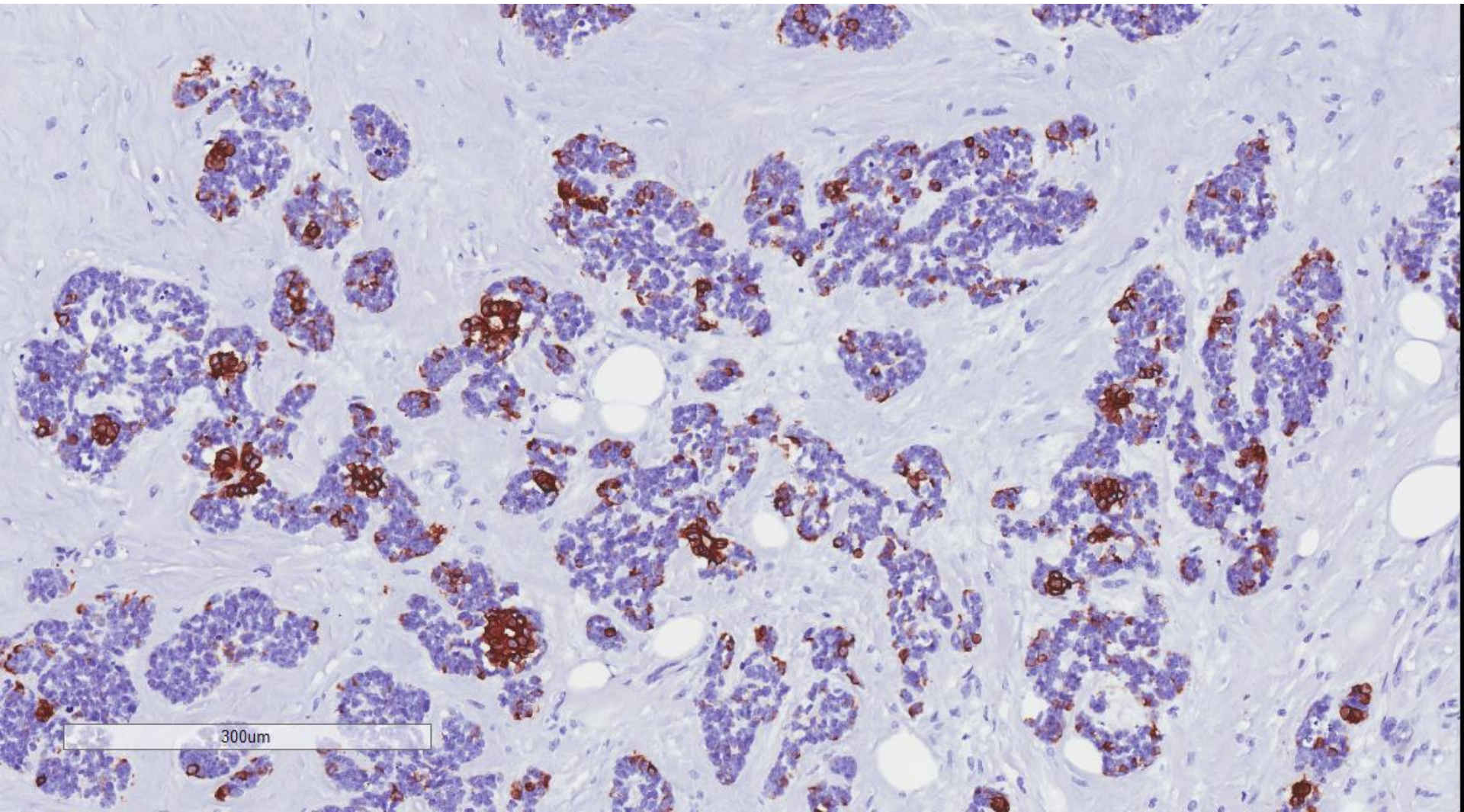
300um





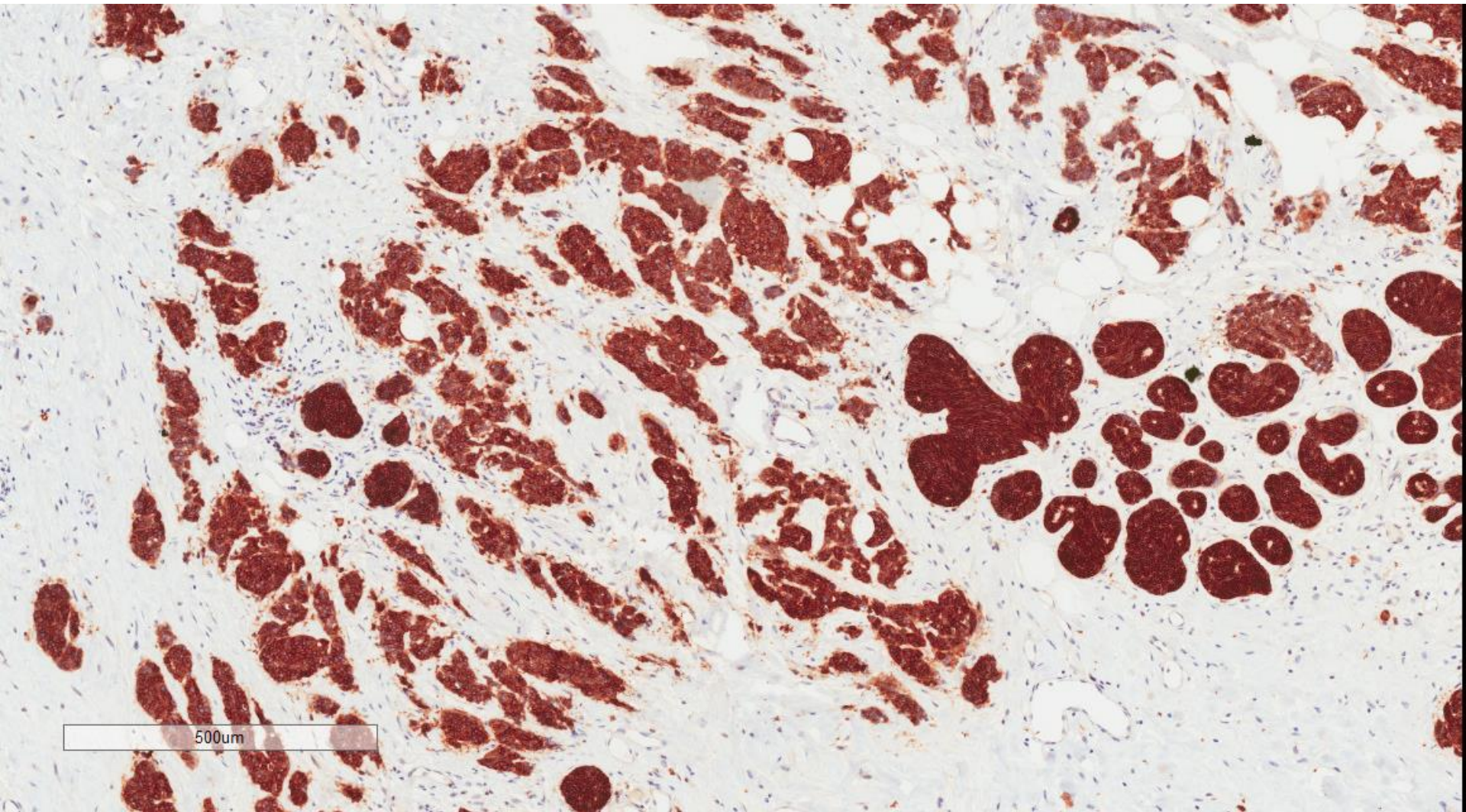


AE1/3



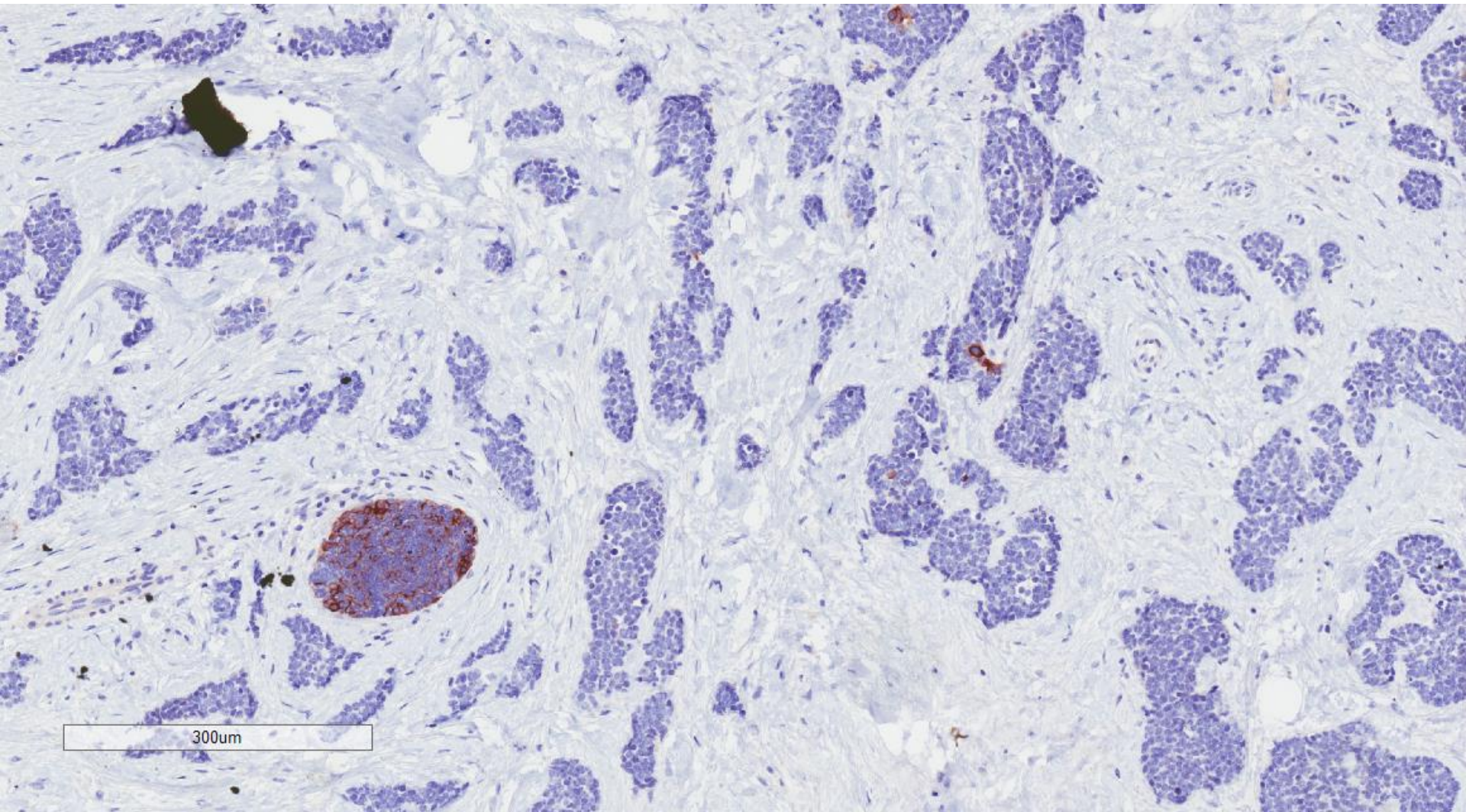


CD117



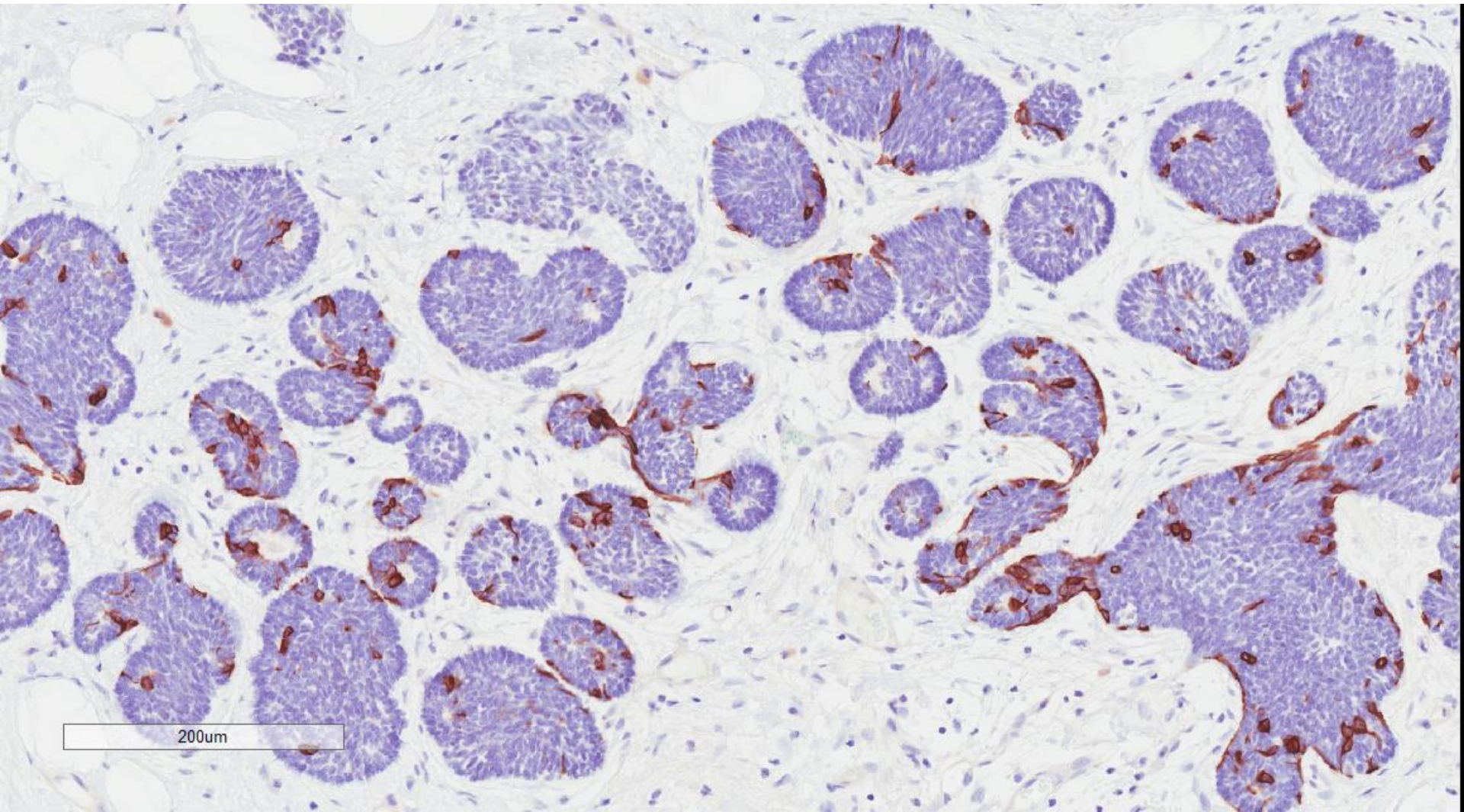


CK5/6



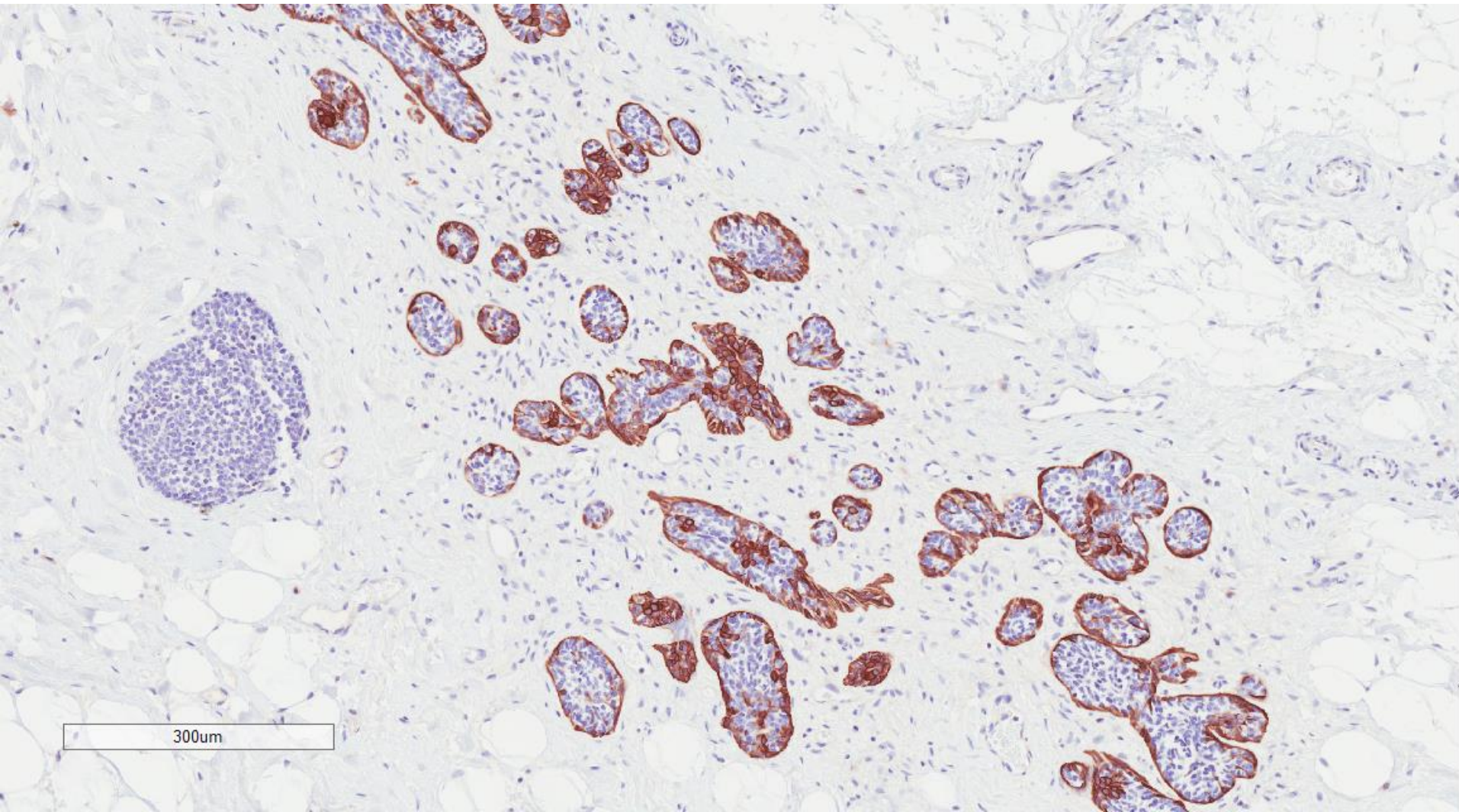


CK14



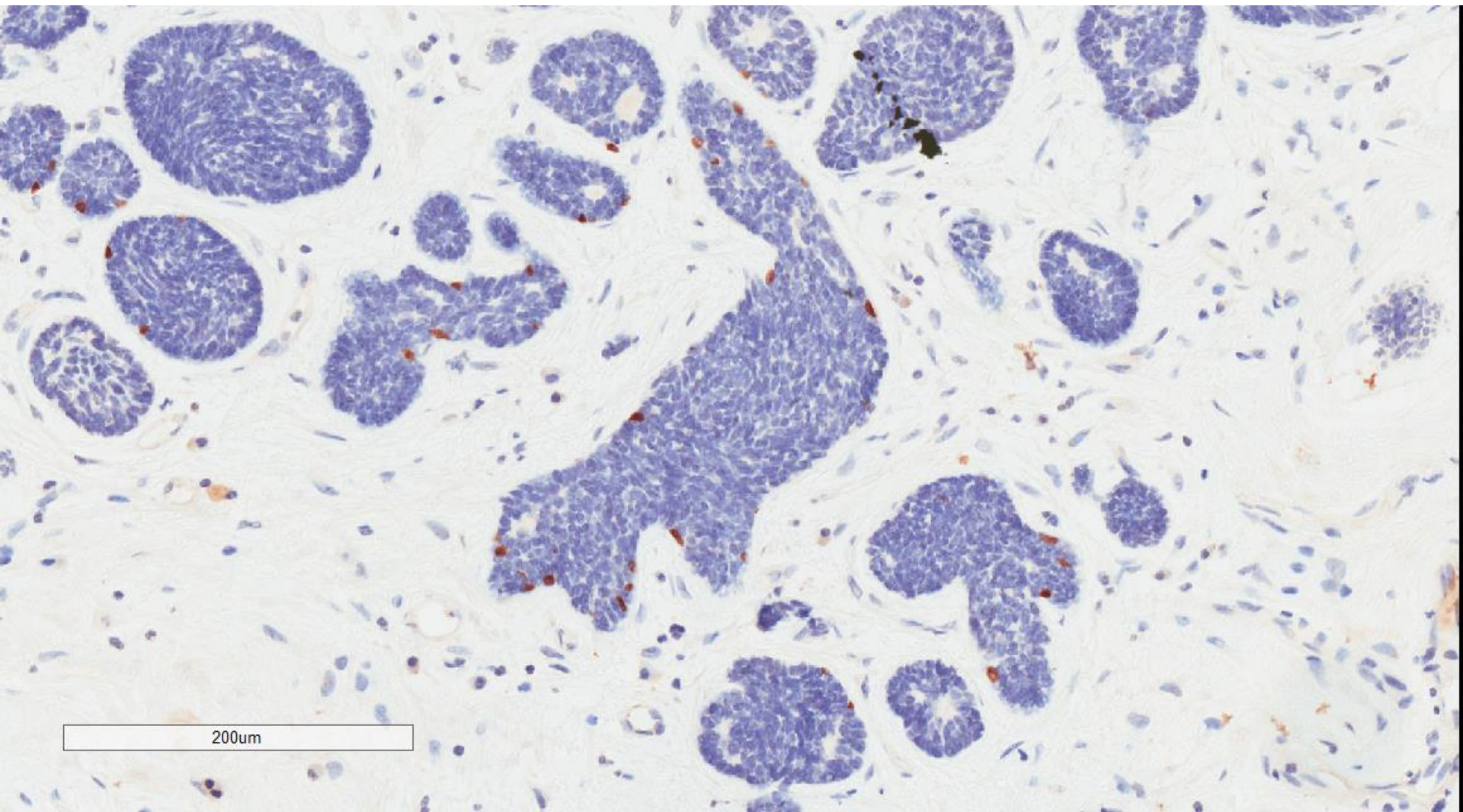


# CK14



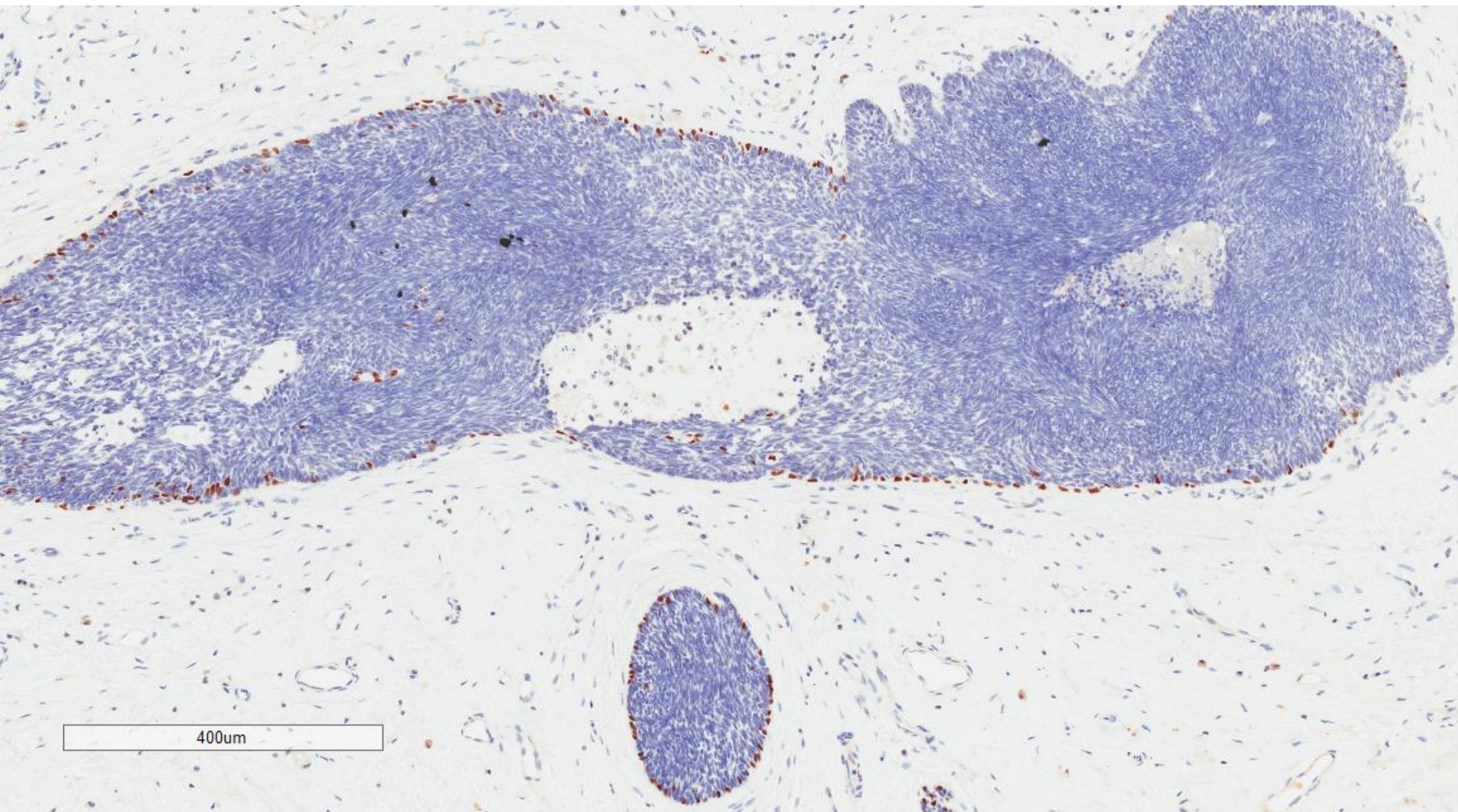


p63



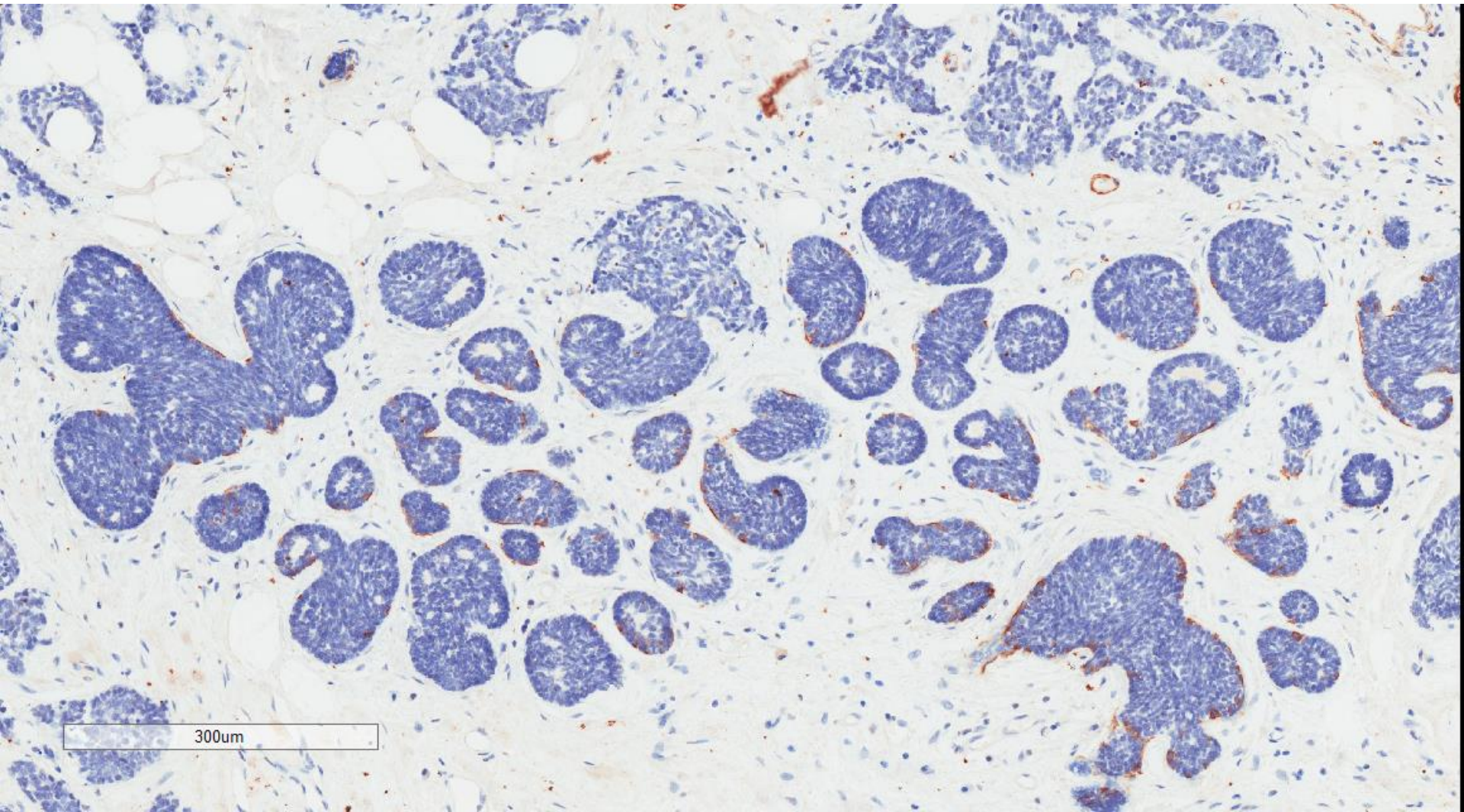


p63





# SMMHC





ER negative, PR negative, cerbB2 negative



Invasive carcinoma with basaloid  
appearances;  
solid variant adenoid cystic  
carcinoma with basaloid features  
favoured