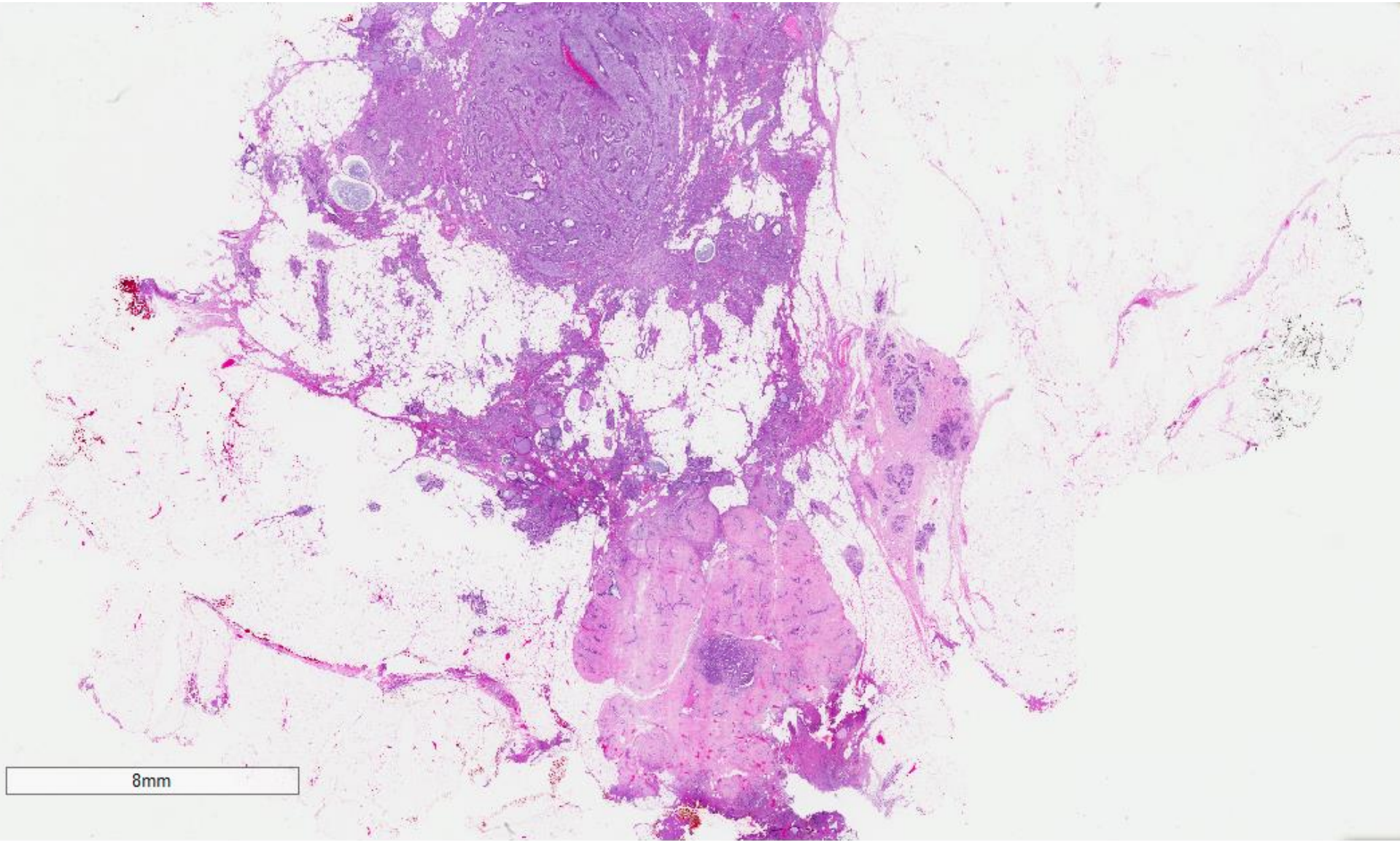
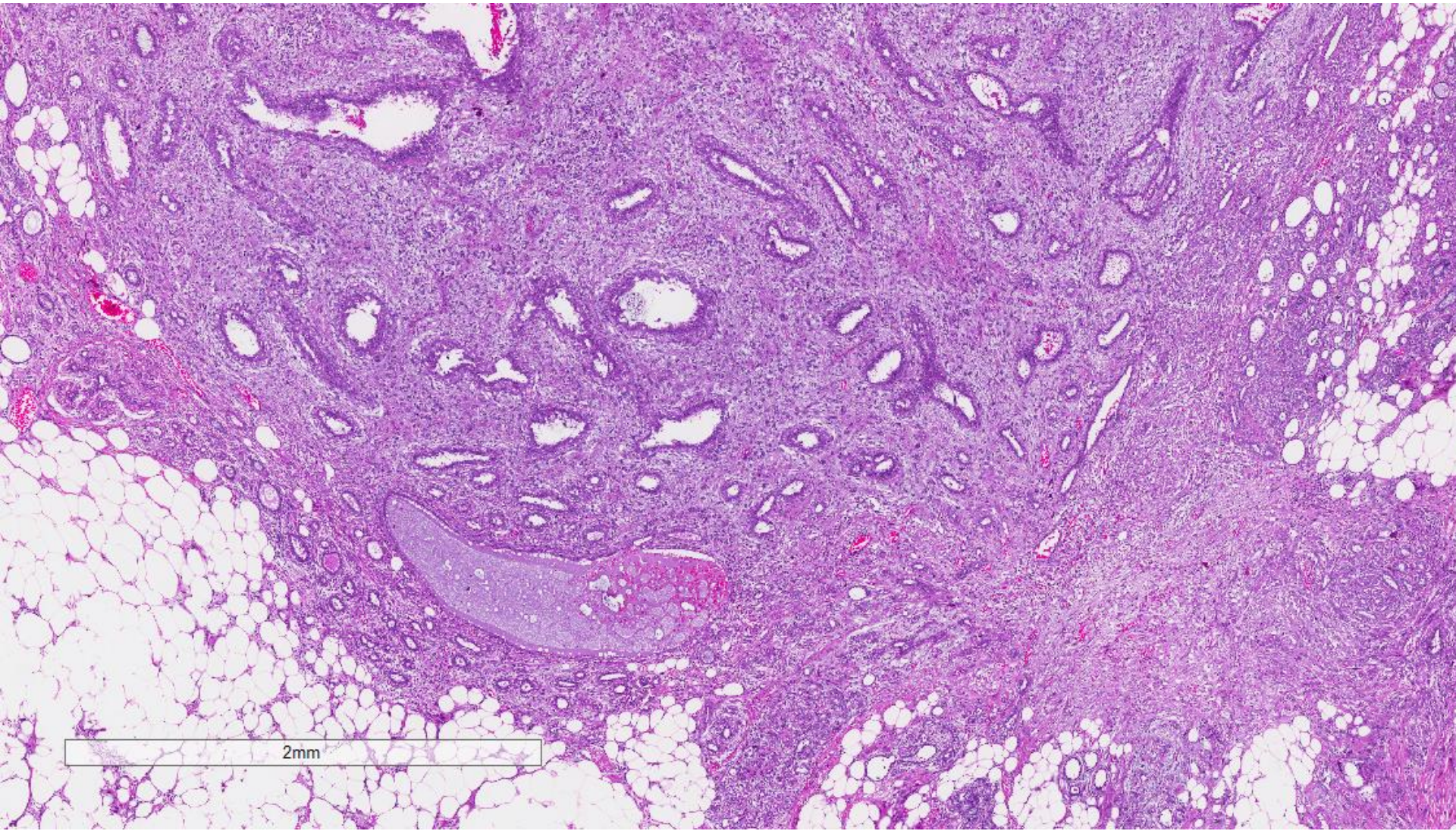


Case 37

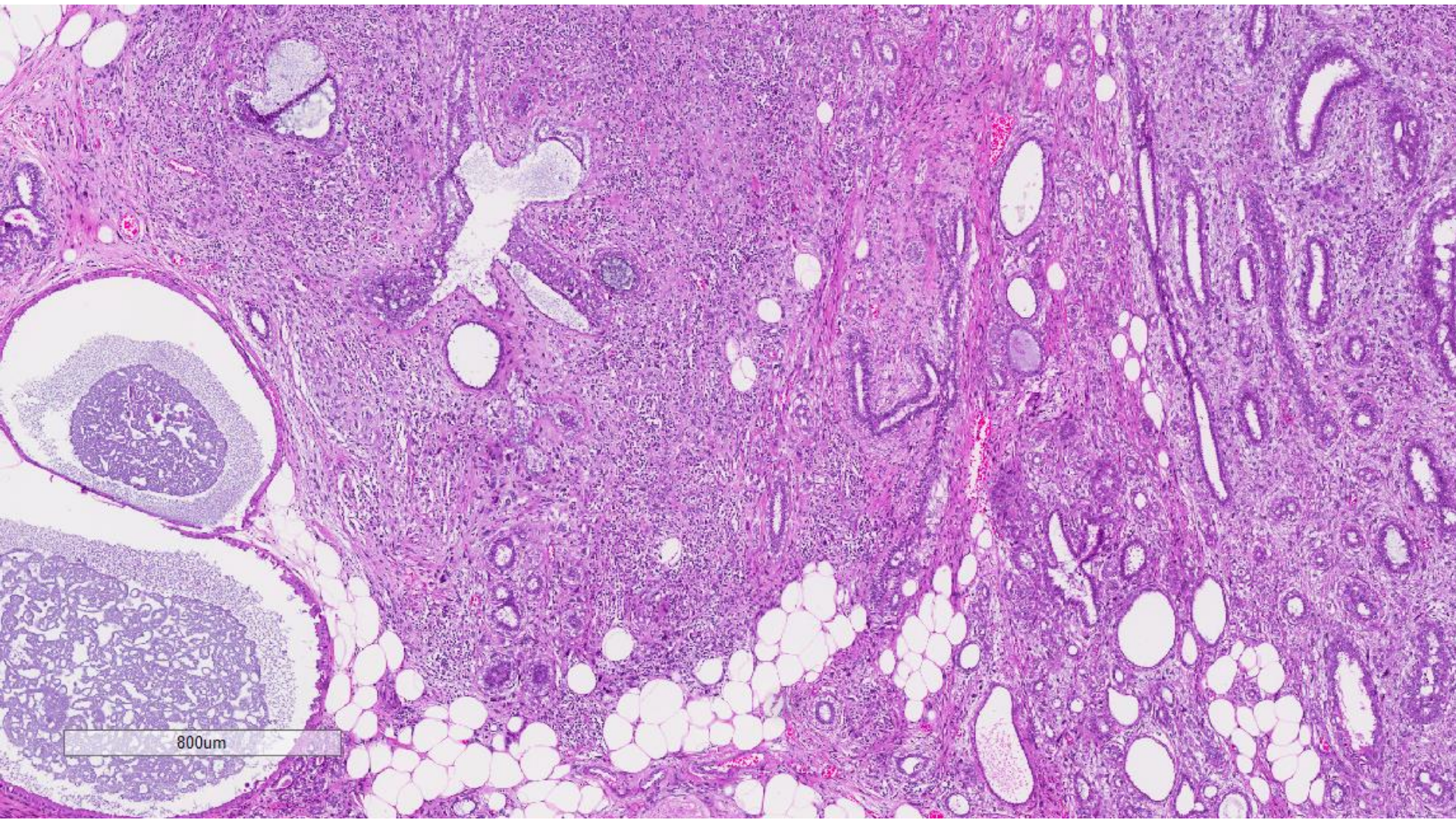
38 year old lady underwent wide excision of a left breast mass.

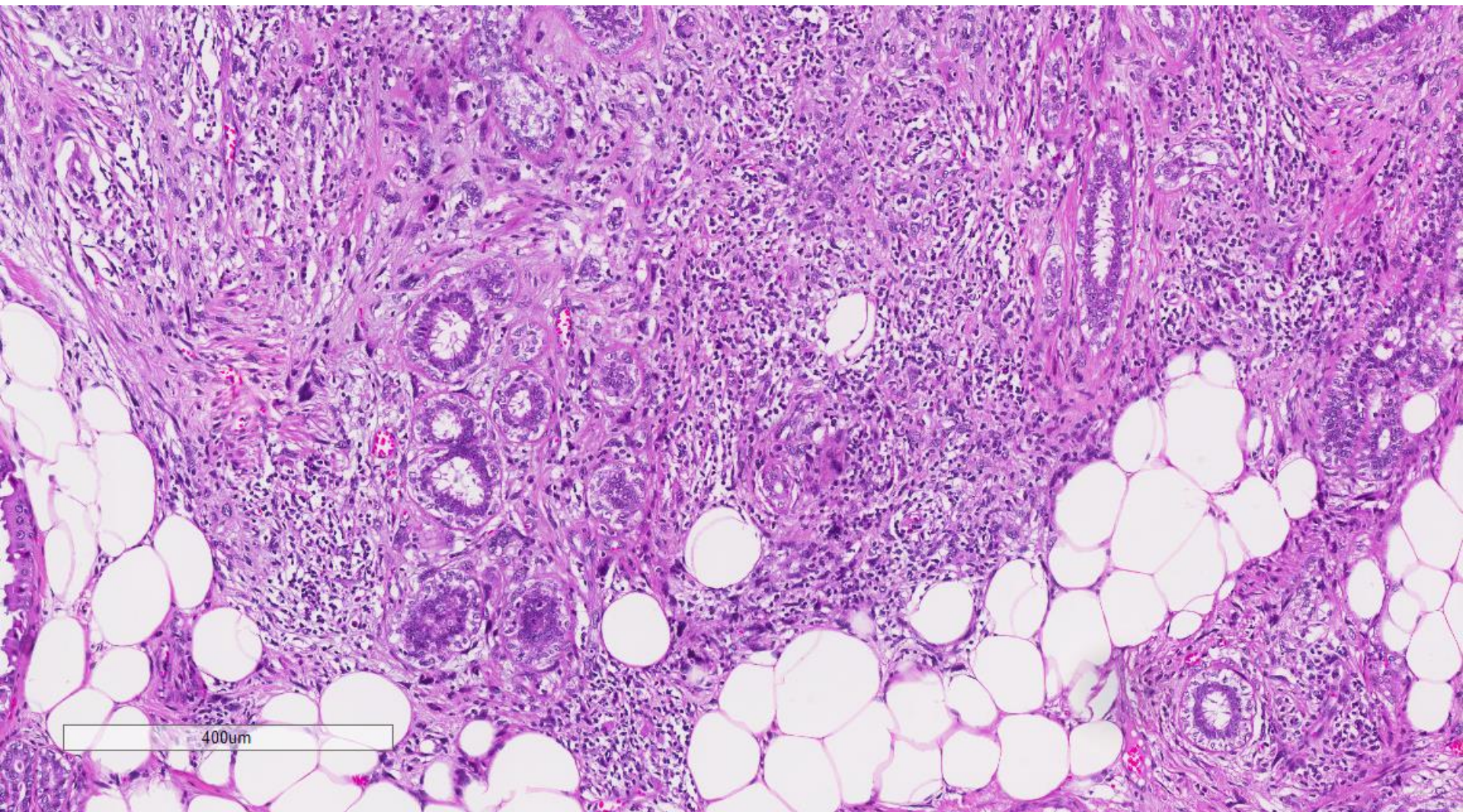


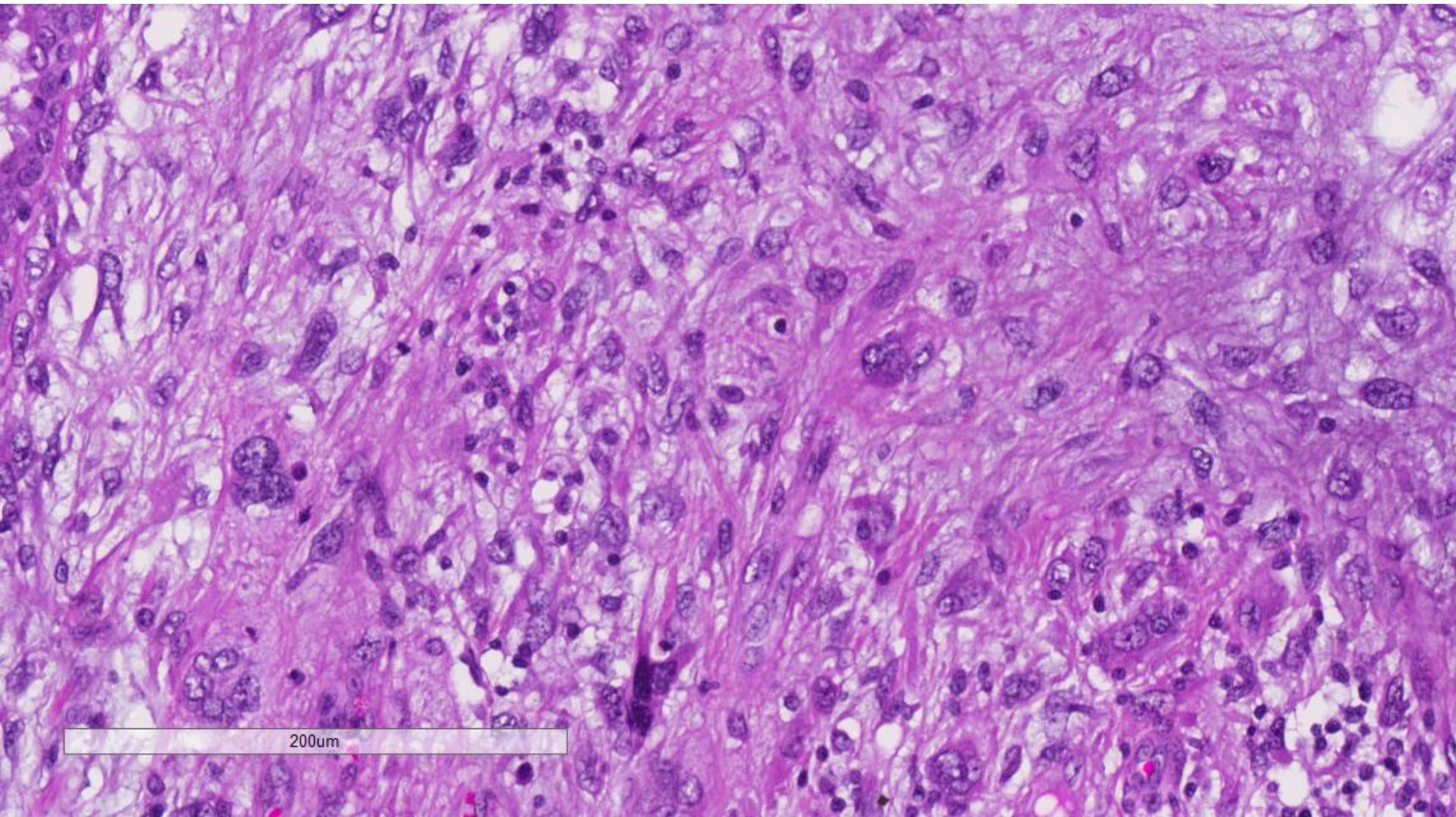
8mm



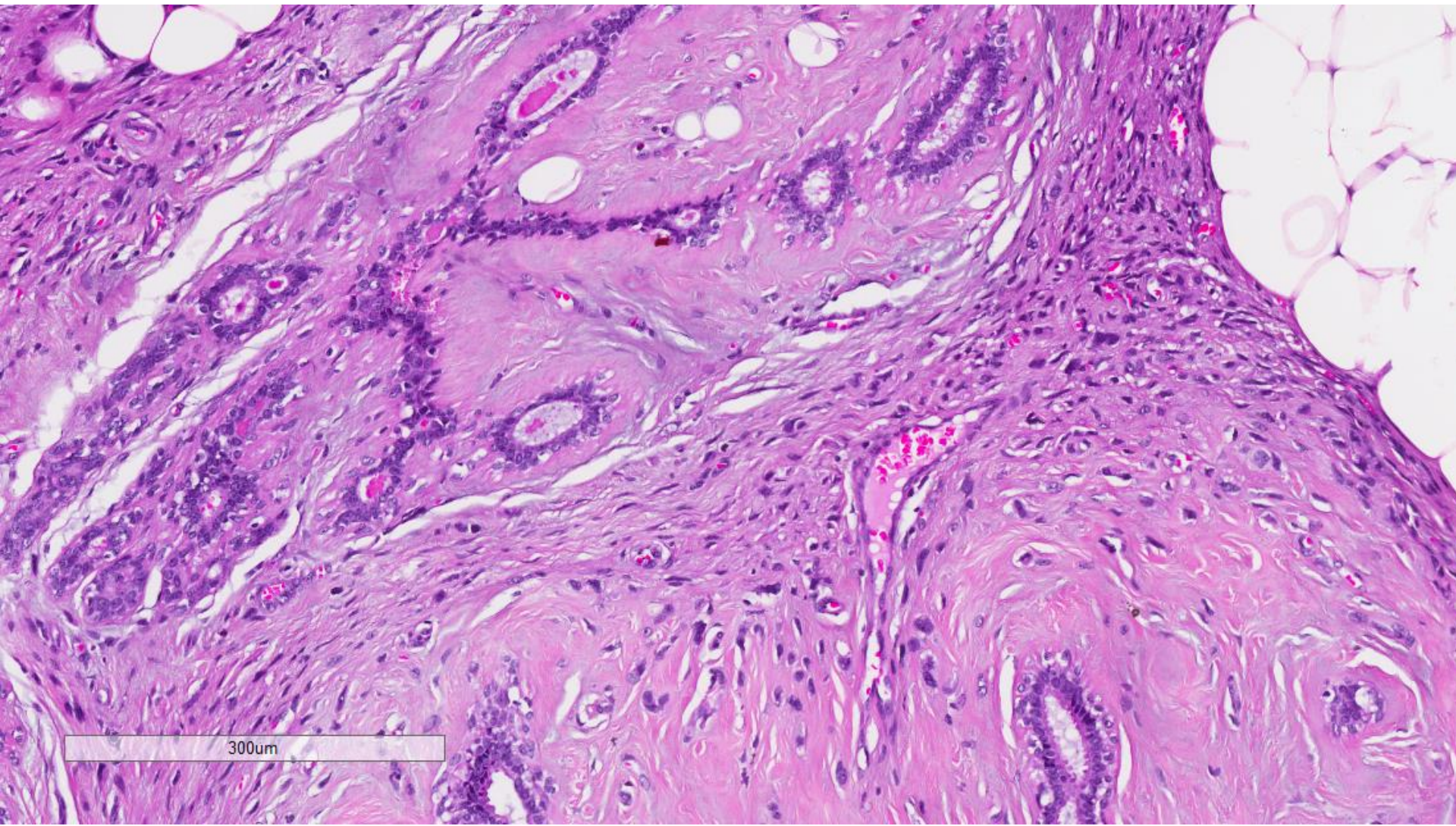
2mm



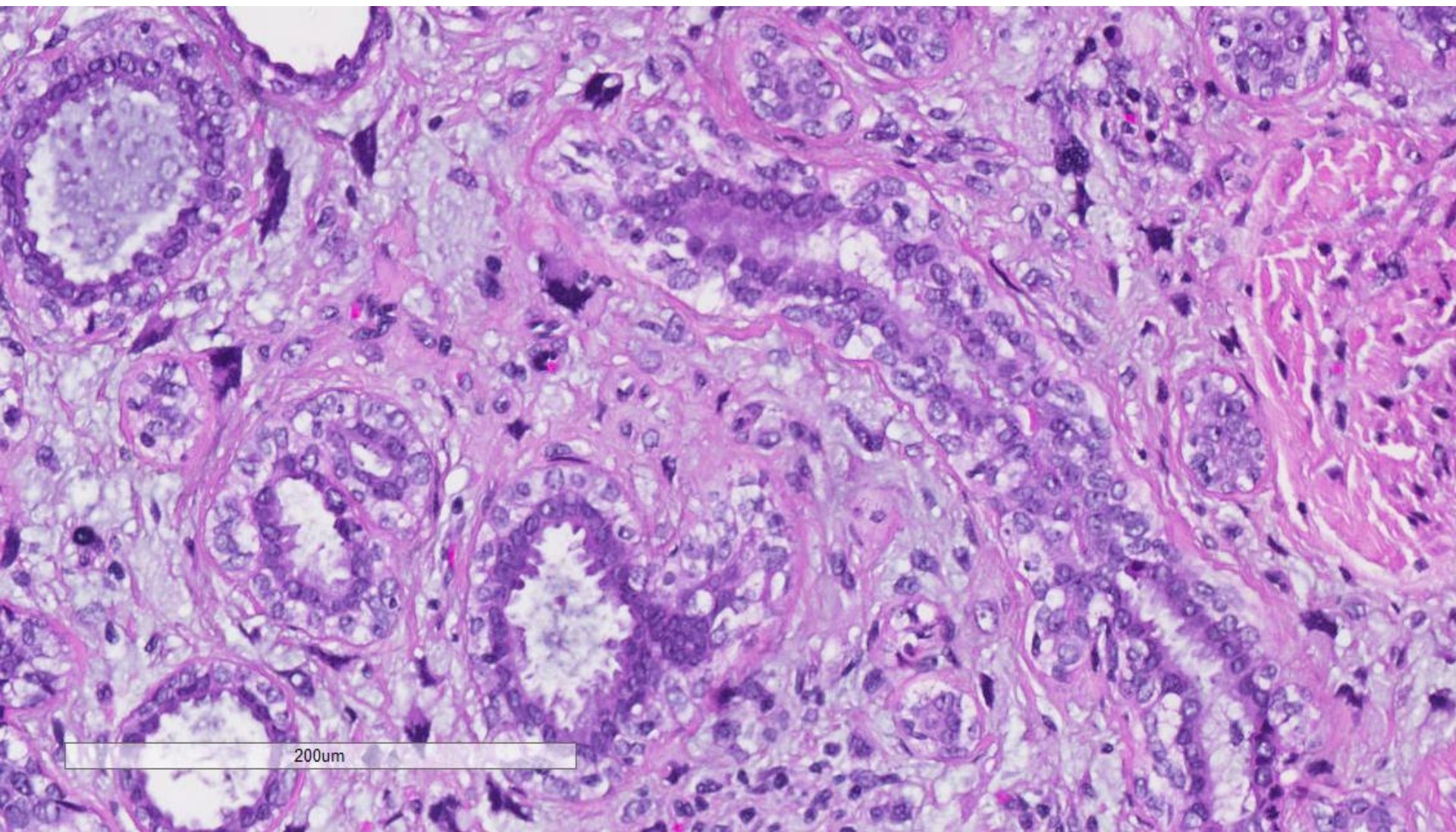


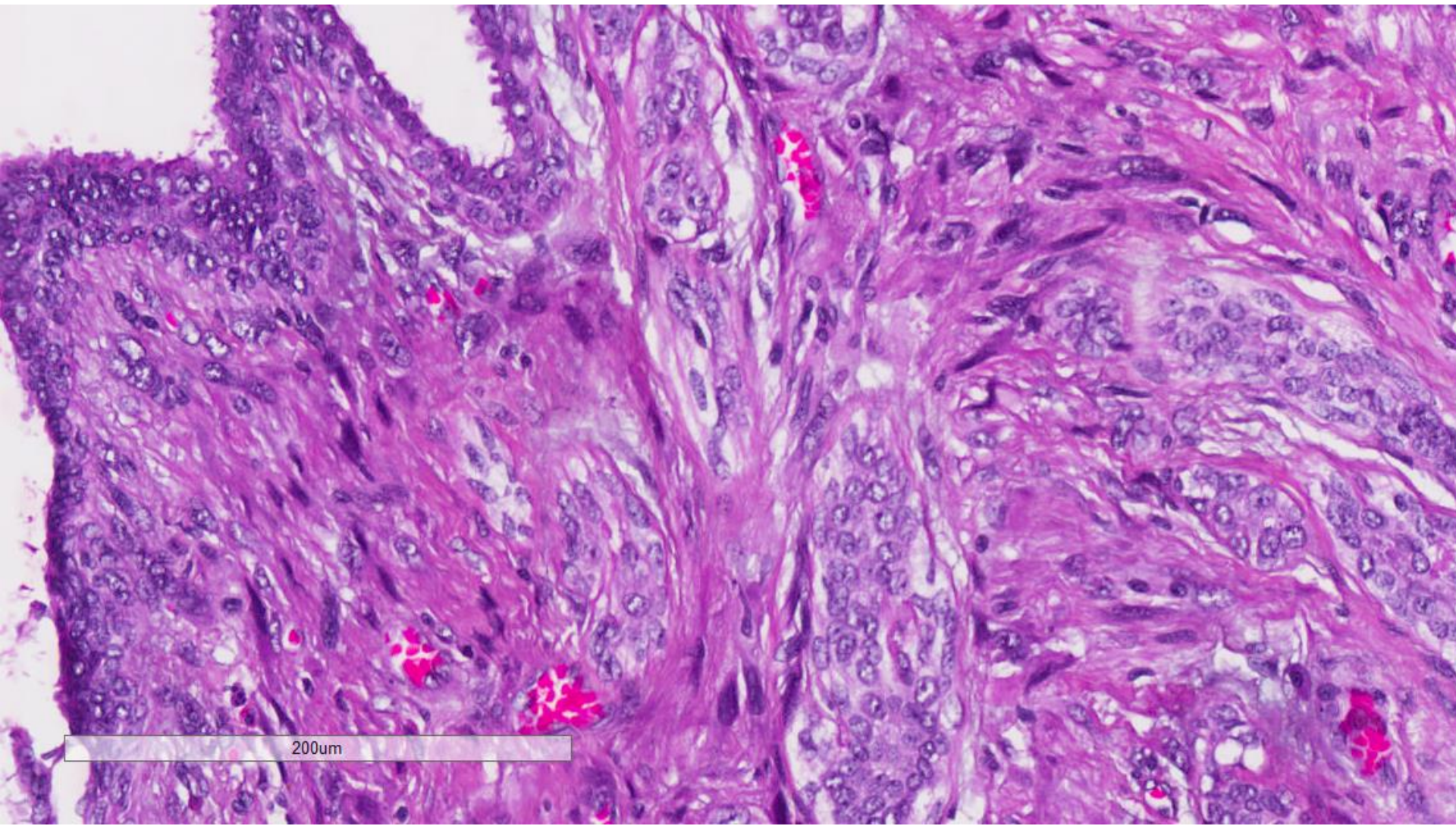


200um

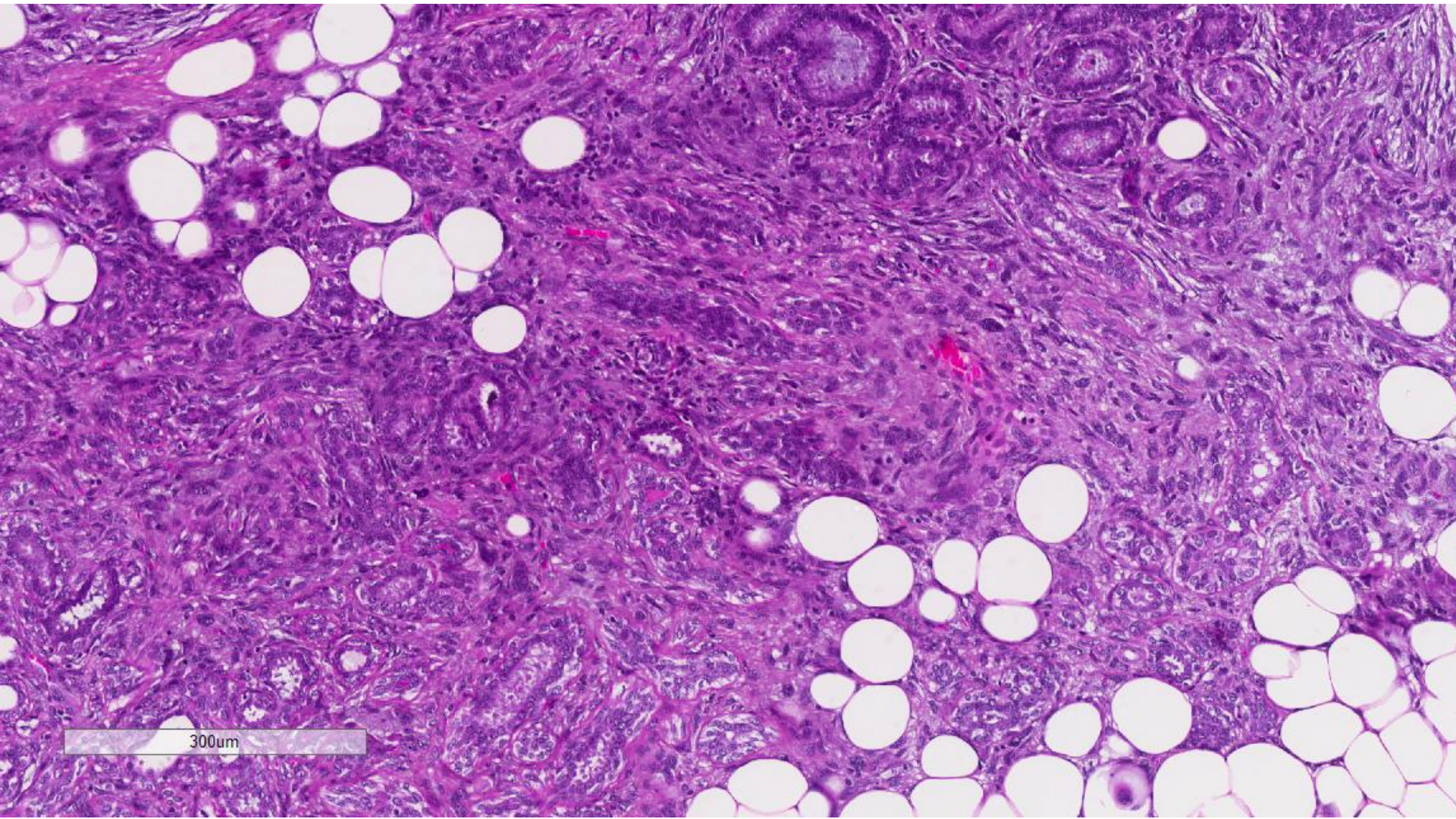


300um





200µm



300um

Immunohistochemistry

- Abnormal spindle cells were negative for keratins, including high molecular weight keratins.
- p63 negative.

Malignant spindle cell tumour, favouring periductal stromal sarcoma/malignant phyllodes tumour

Periductal stromal tumour

- Also referred to as periductal stromal “sarcoma” (although the neutral term “tumour” is preferred).
- Entity that histologically overlaps with phyllodes tumour, the main difference being the absence of leaf-like processes.
- Non-circumscribed, consisting of a spindle-cell proliferation localized around open tubules.
- Progression to classic phyllodes tumour has been documented, suggesting that it may be part of the same spectrum of disease.