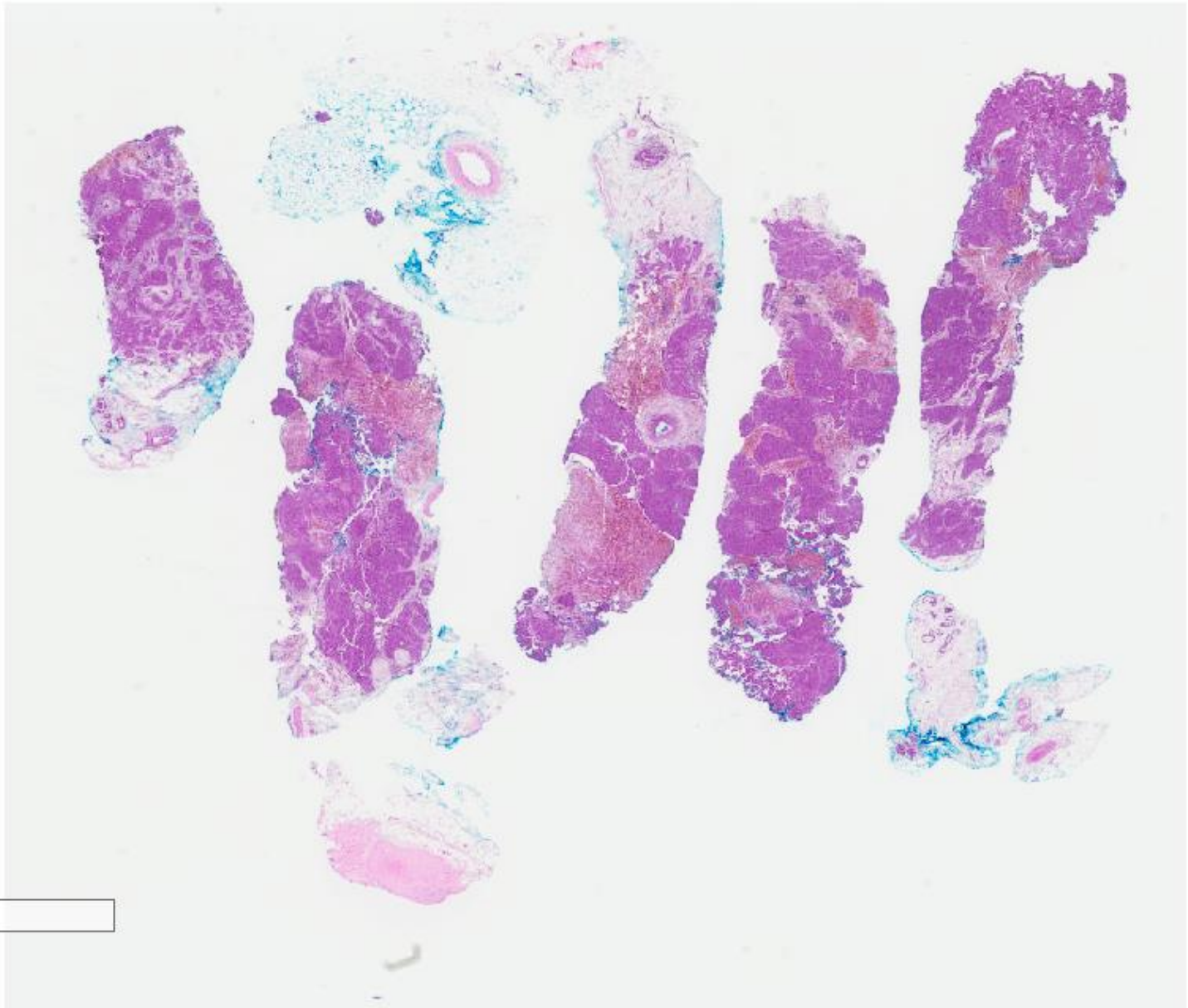
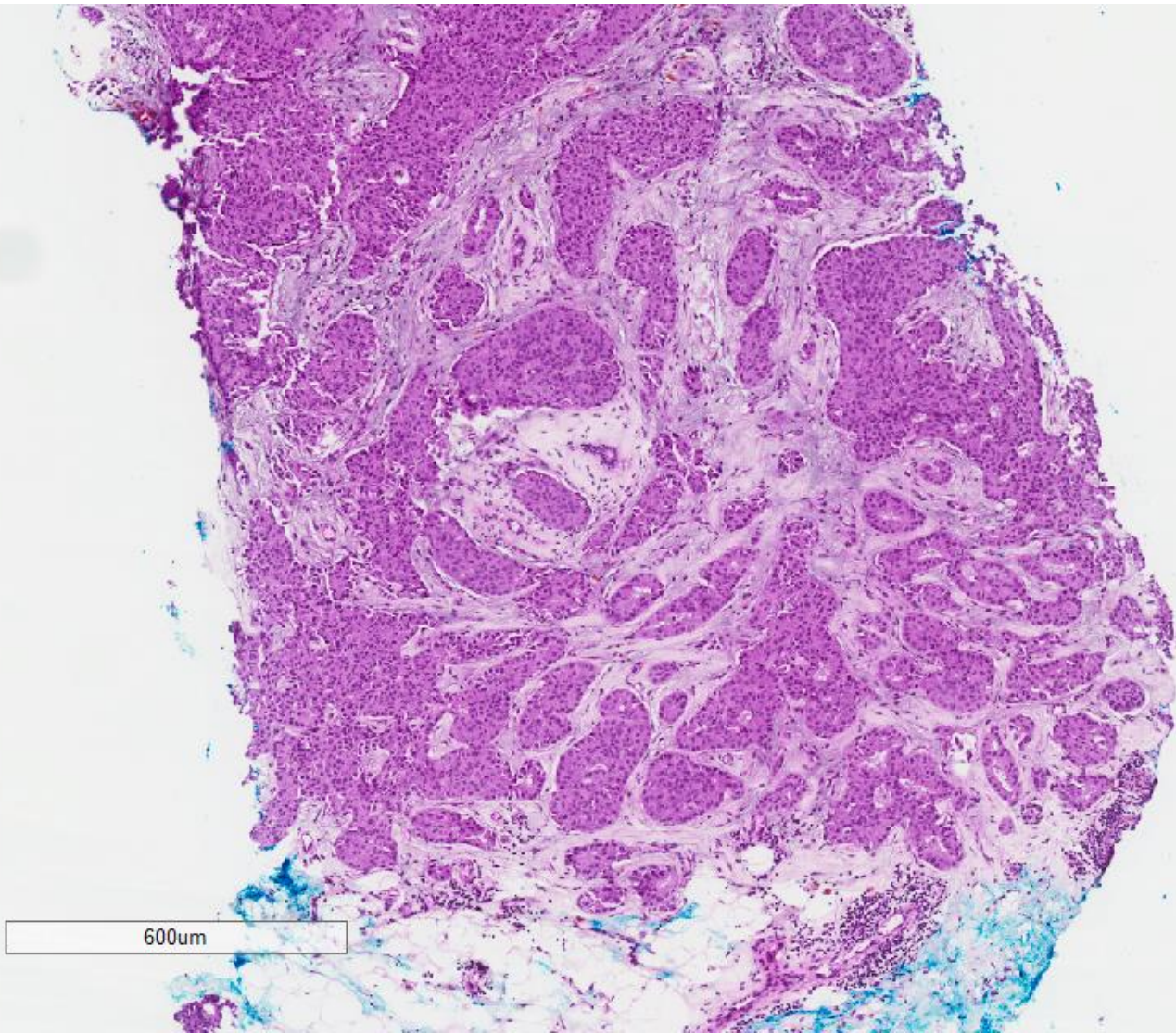


Case 36

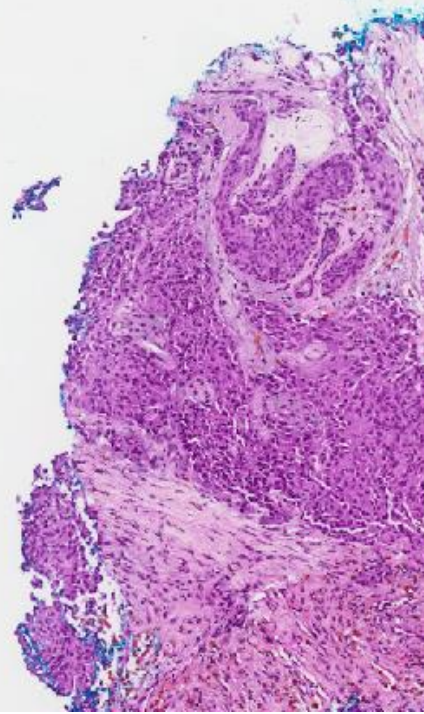
38 year old lady underwent core biopsy
of a right breast lesion.

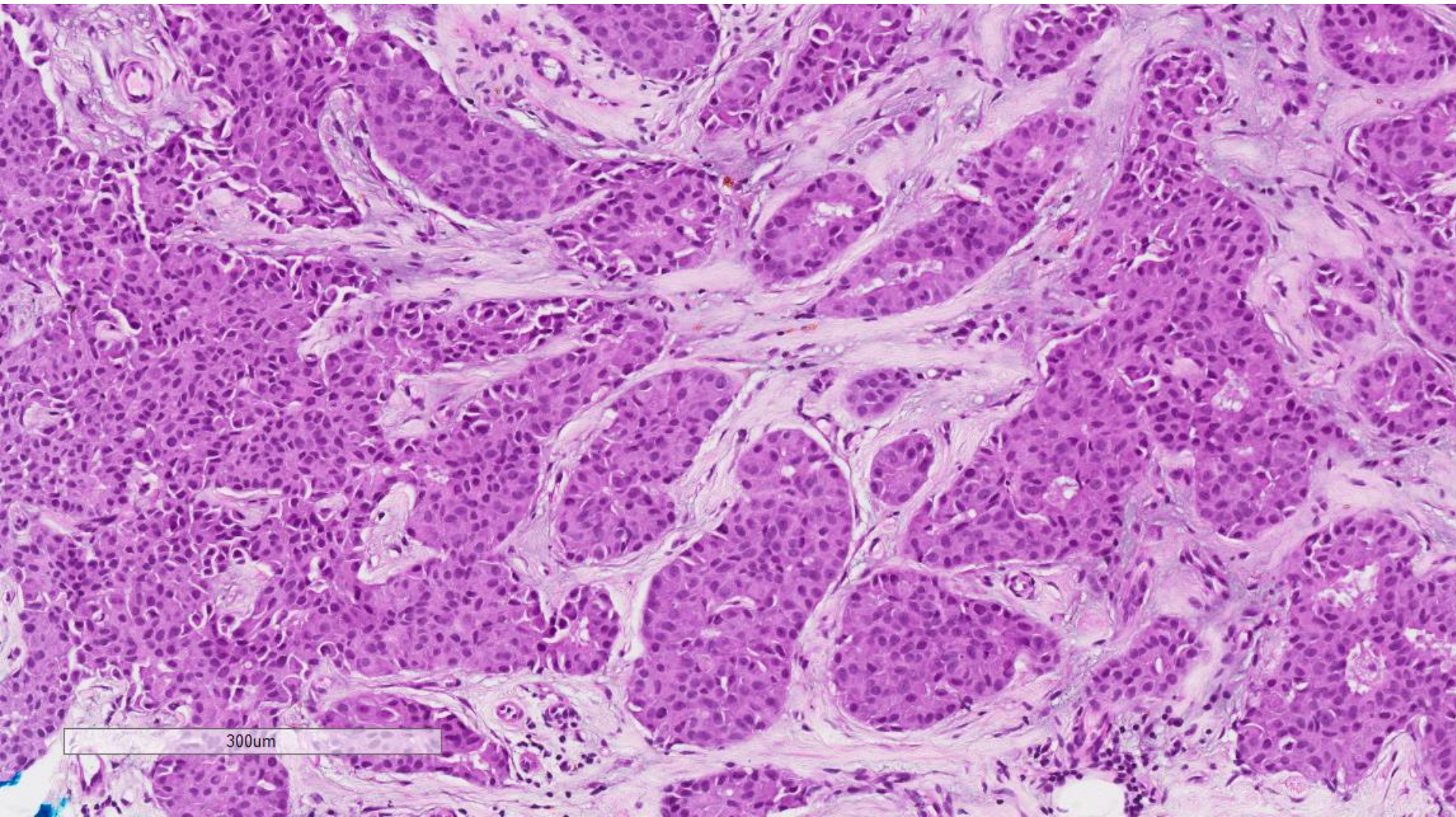


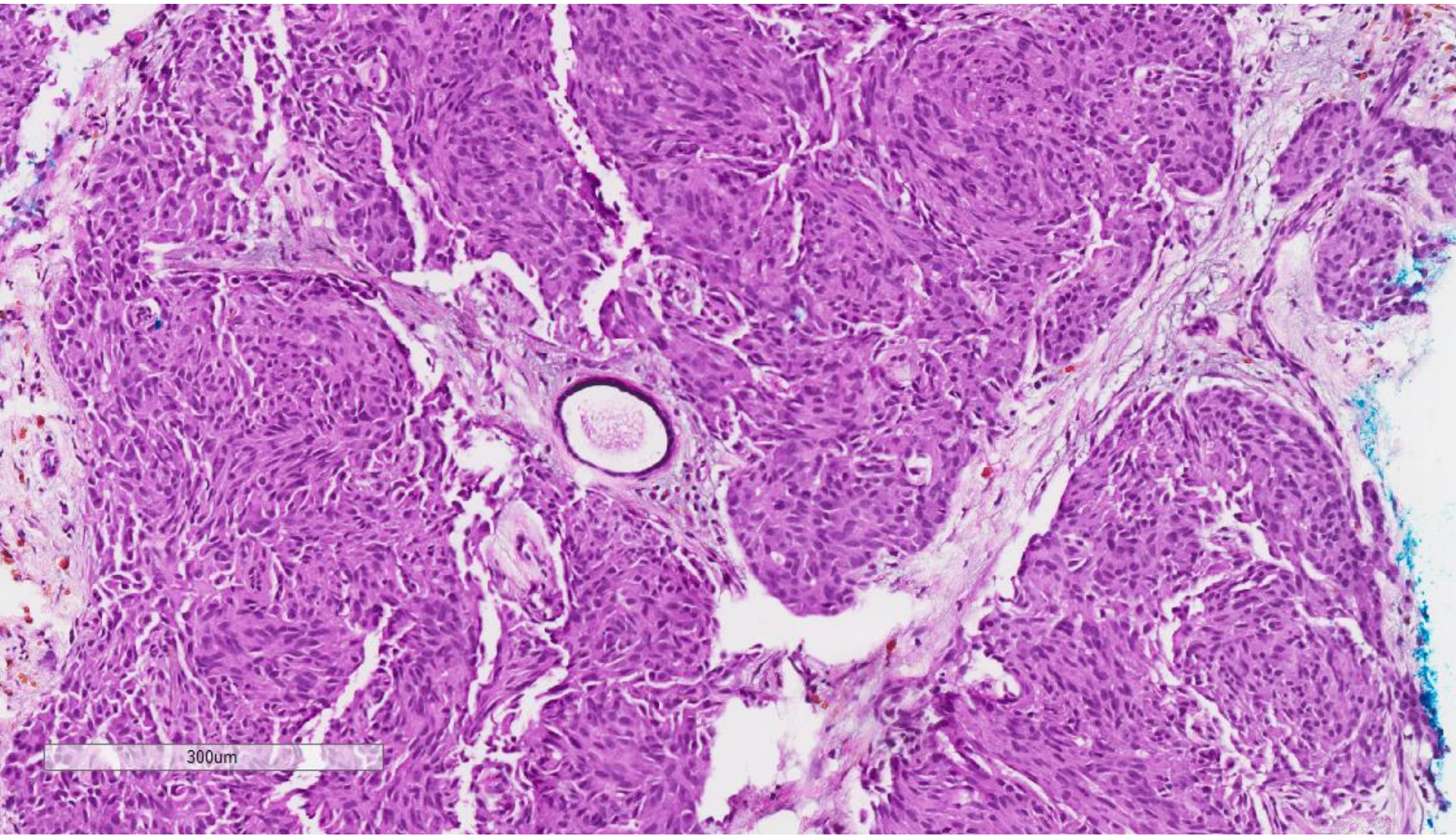
4mm



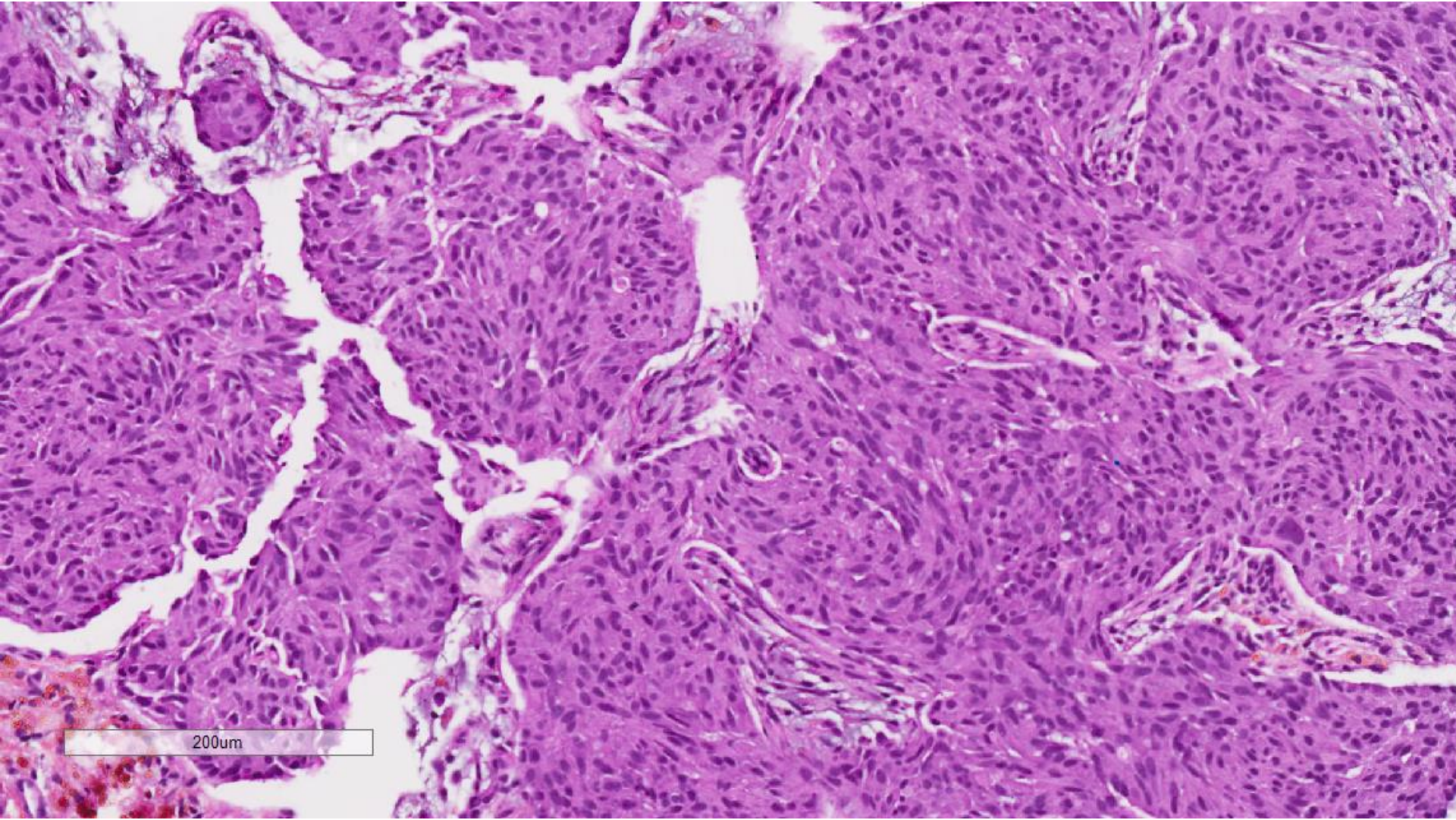
600um



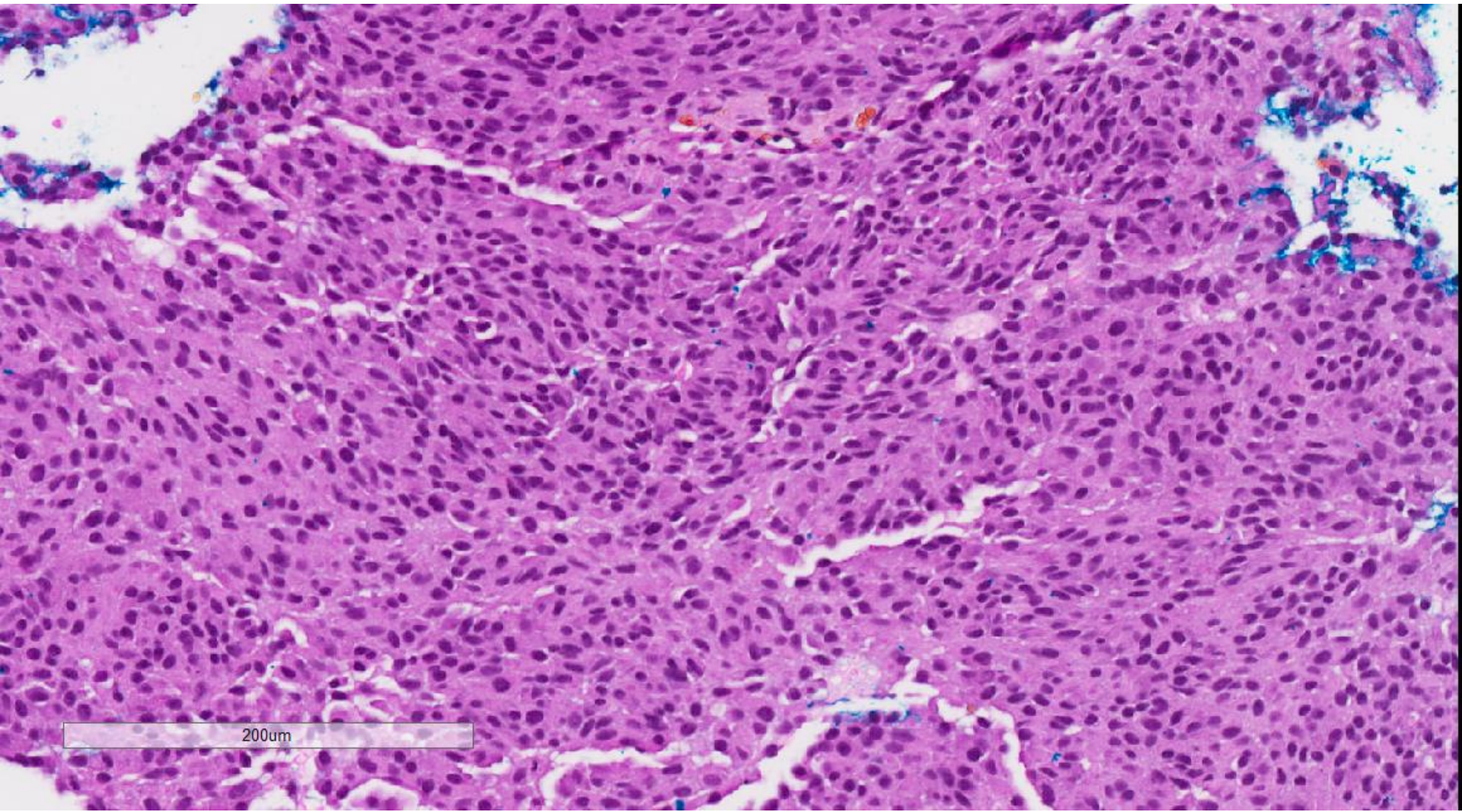




300um



200um

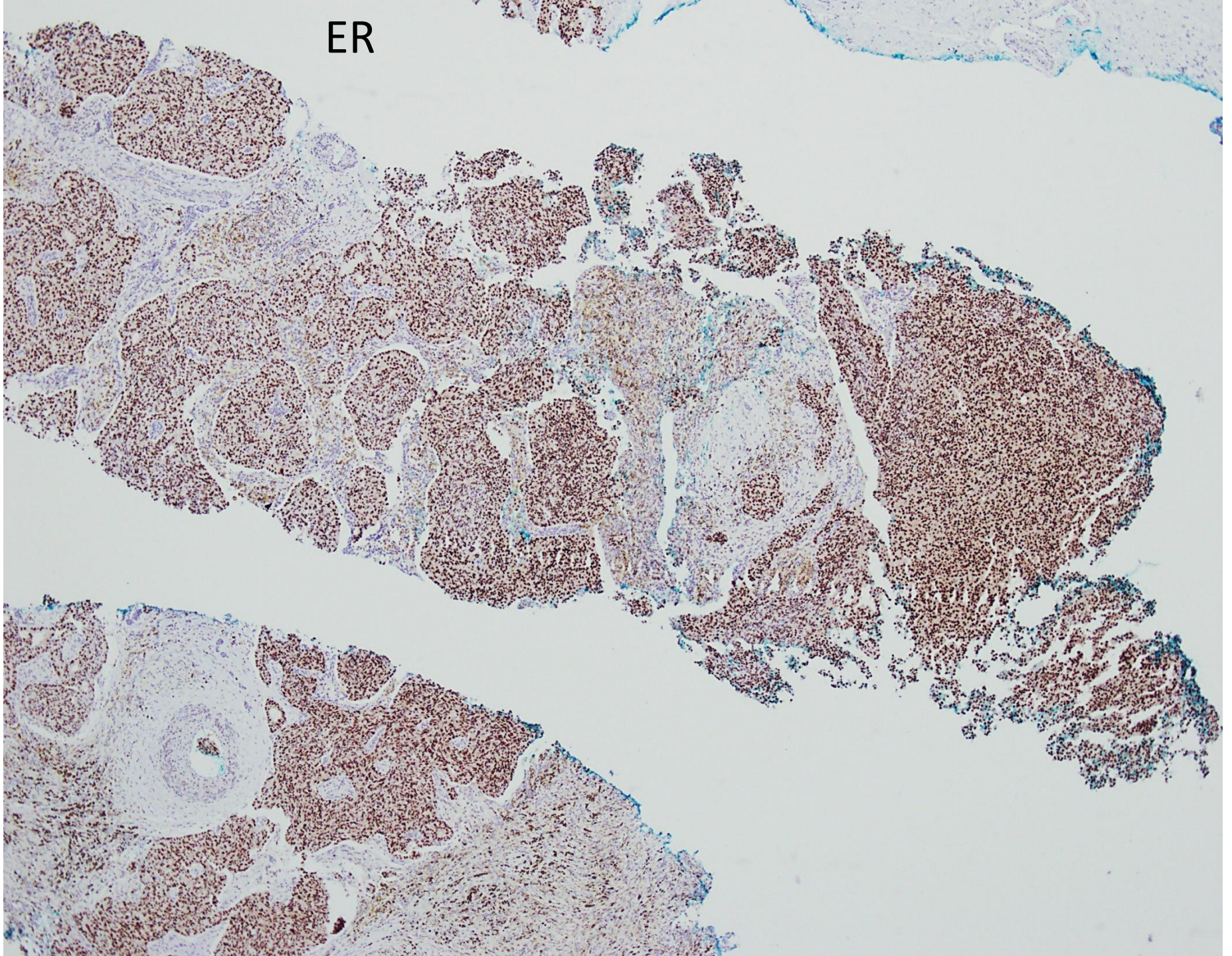


200um

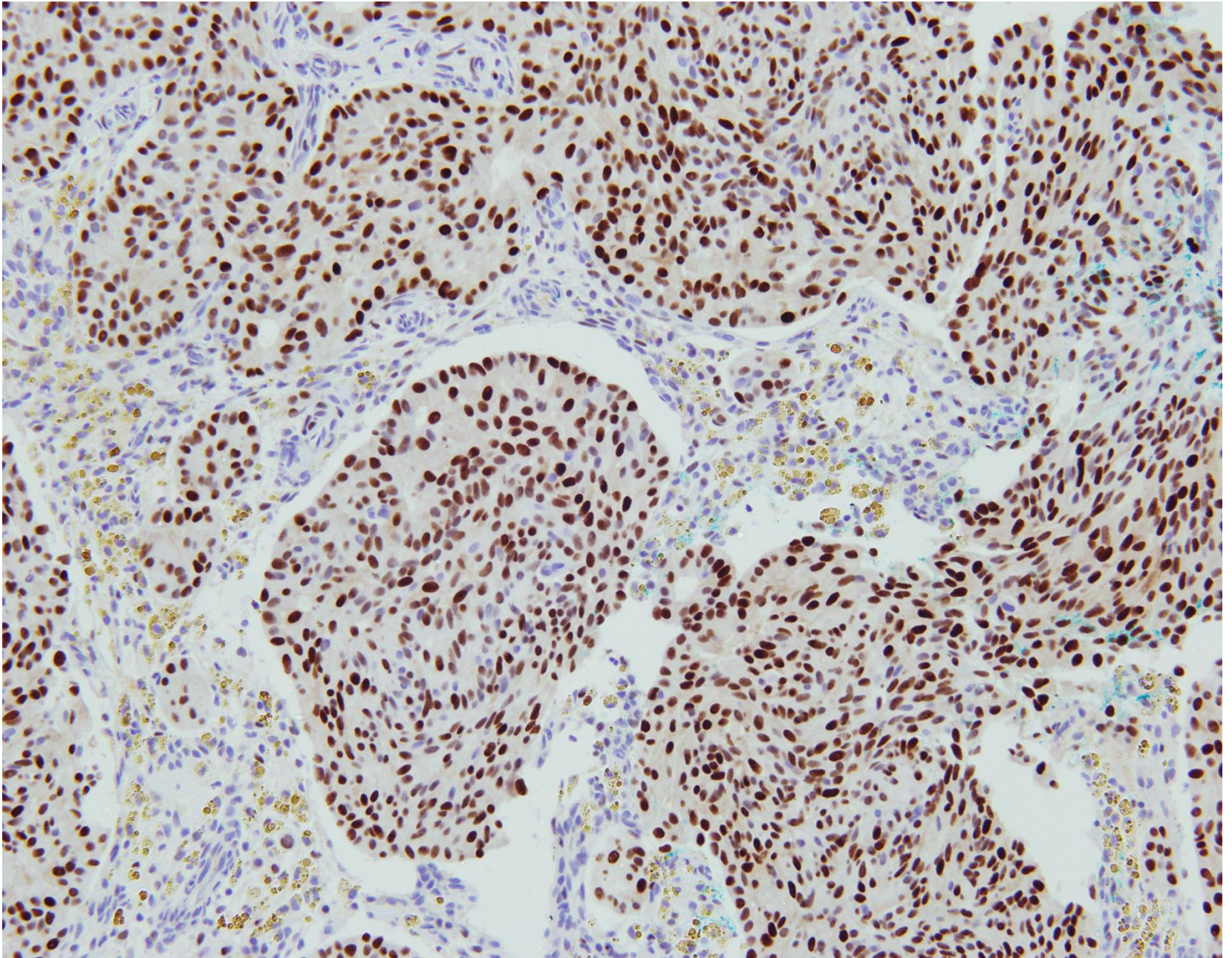
Immunohistochemistry

- Synaptophysin is diffusely expressed.
- ER positive, PR positive, cerbB2 negative.

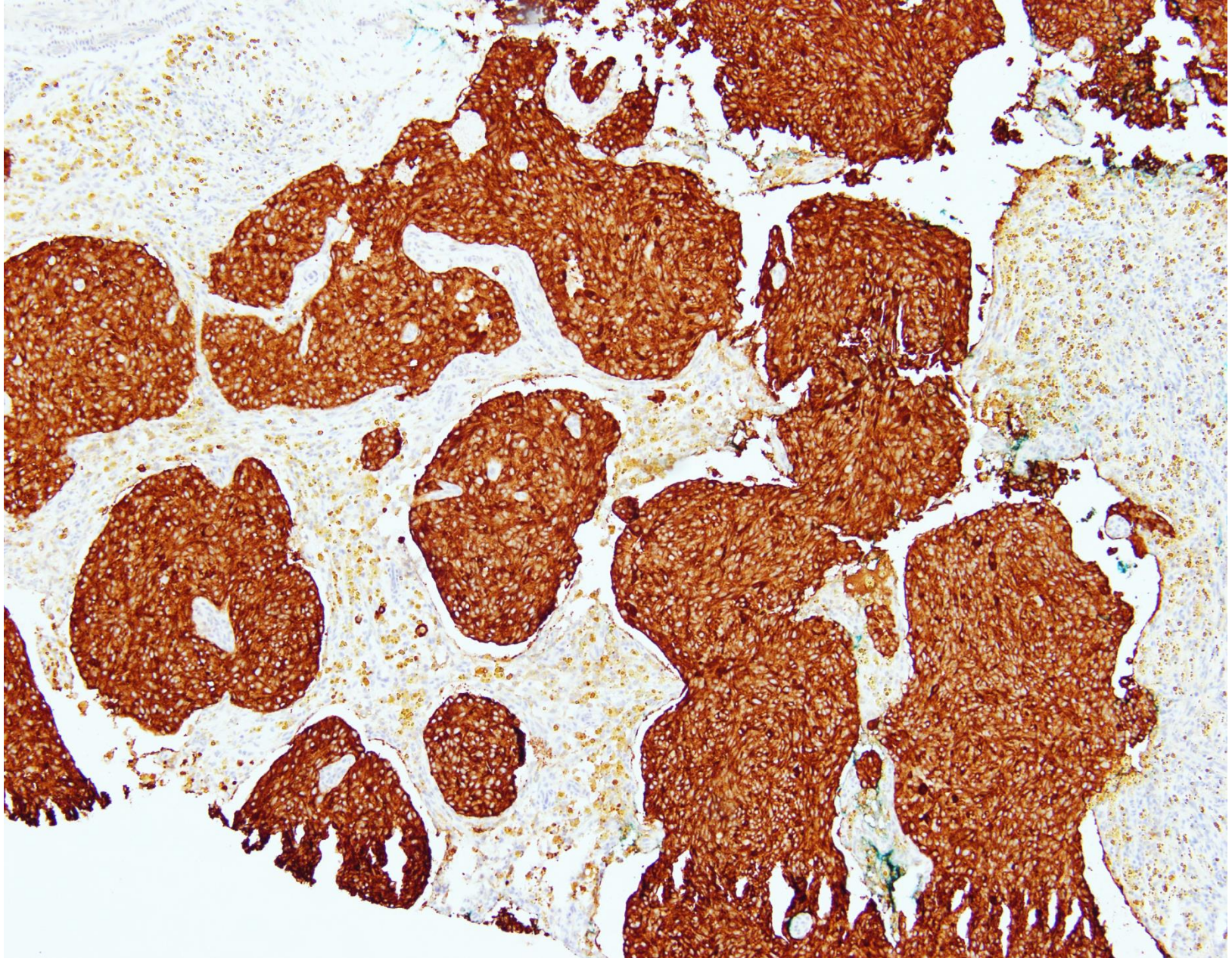
ER



ER



synaptophysin



Core biopsy, left breast tumour:
Invasive carcinoma with ductal features,
spindle and neuroendocrine differentiation