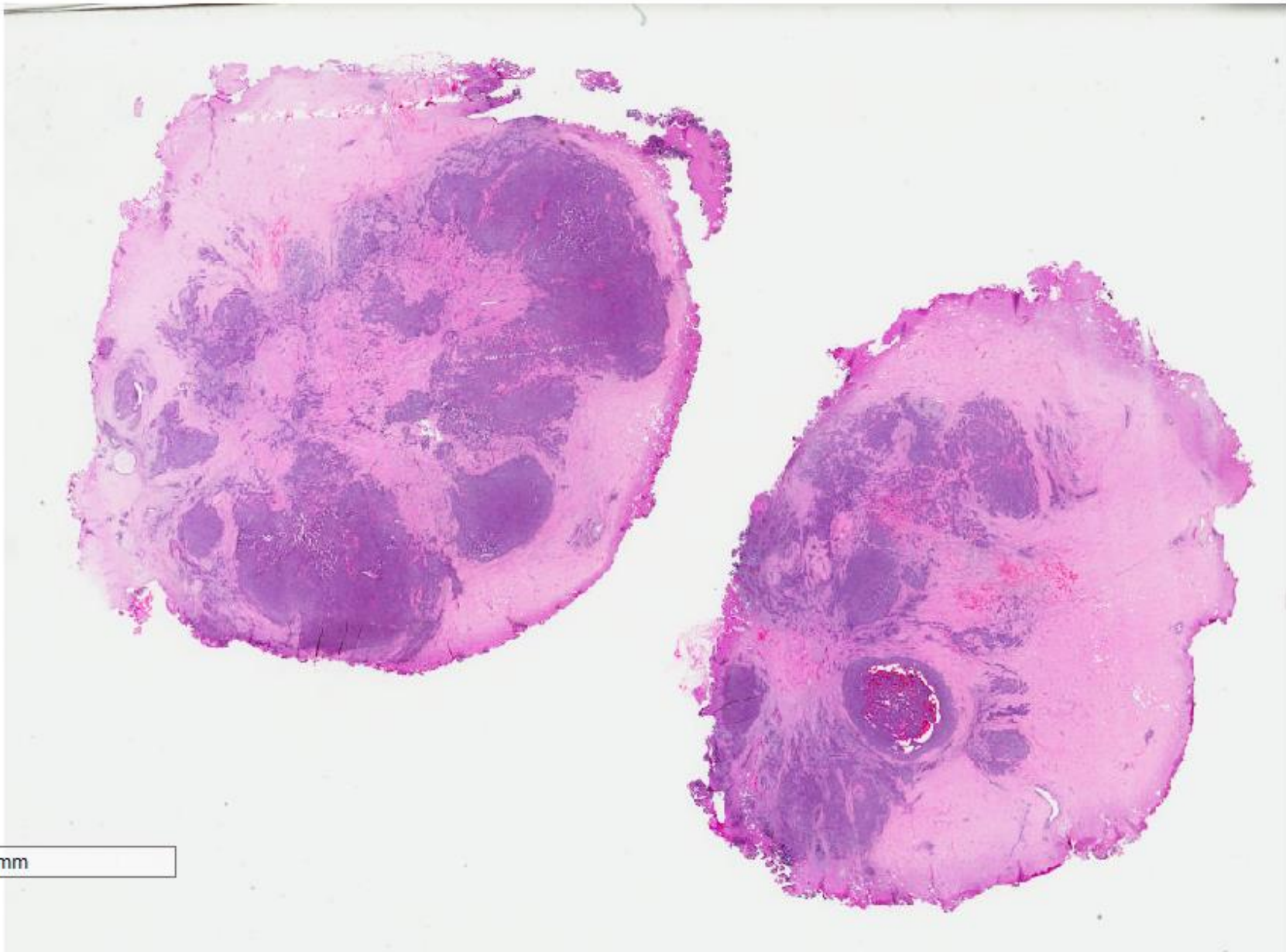
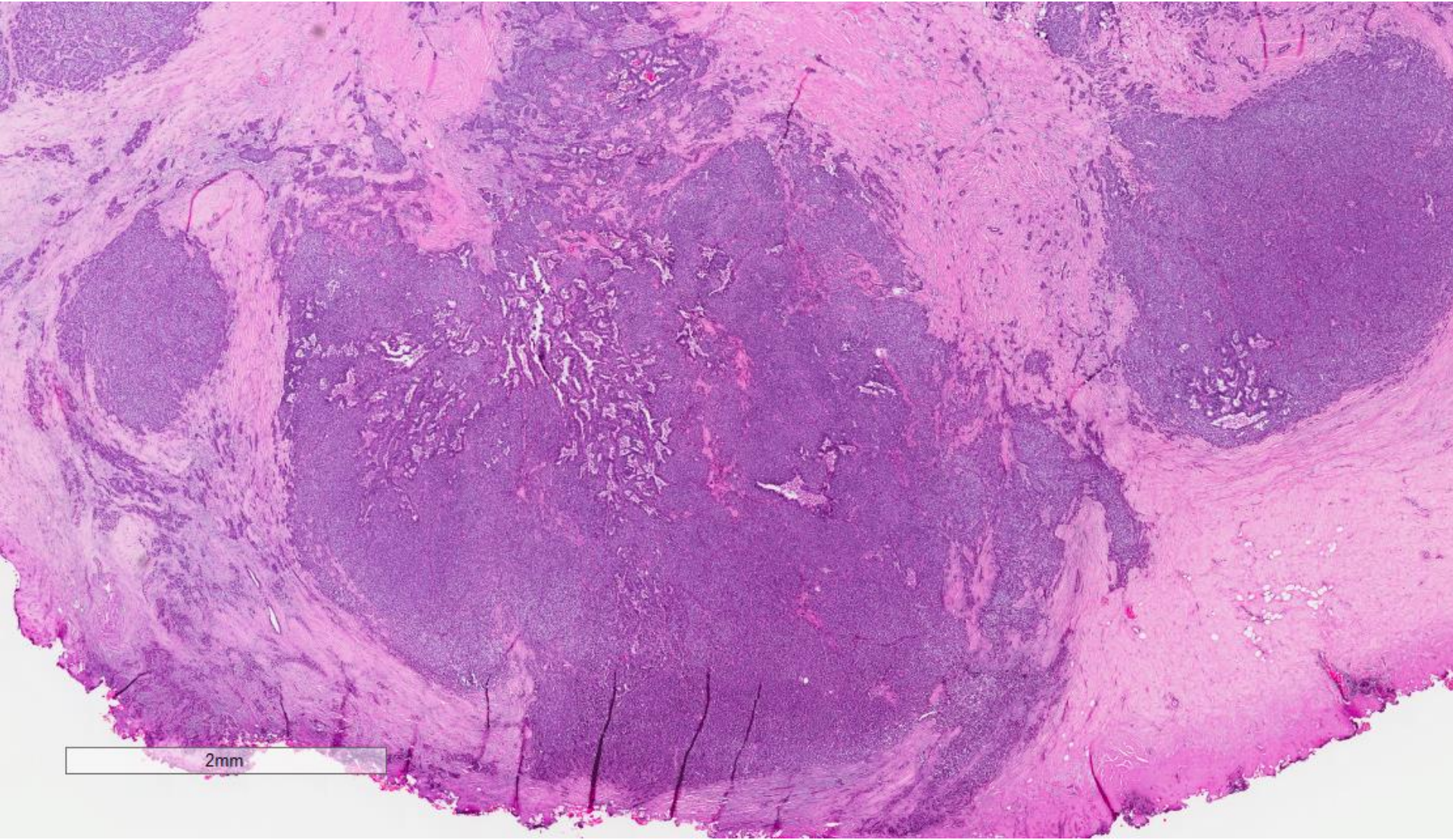


Case 34

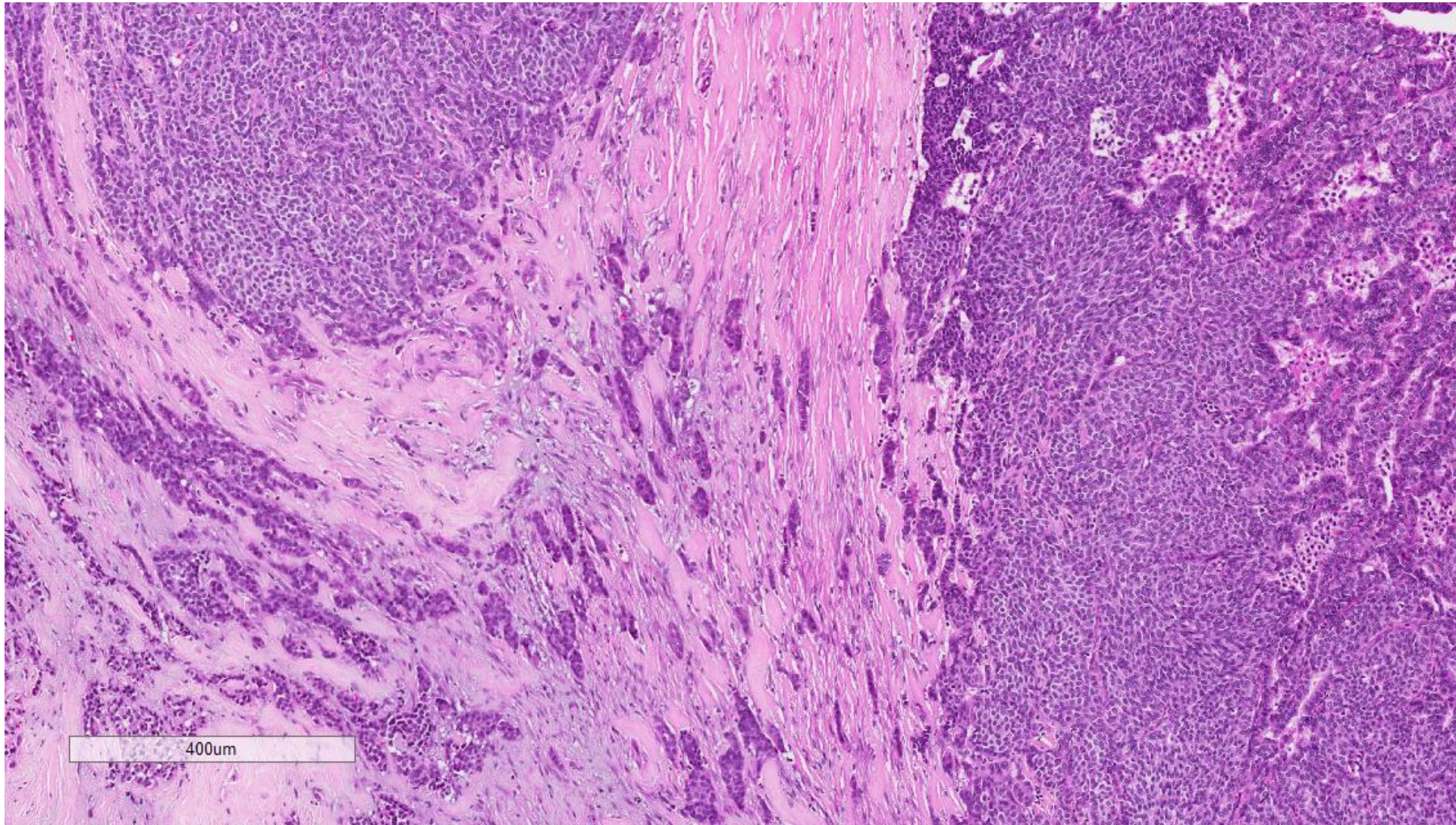
53 year old lady underwent an excision of a left breast lesion.



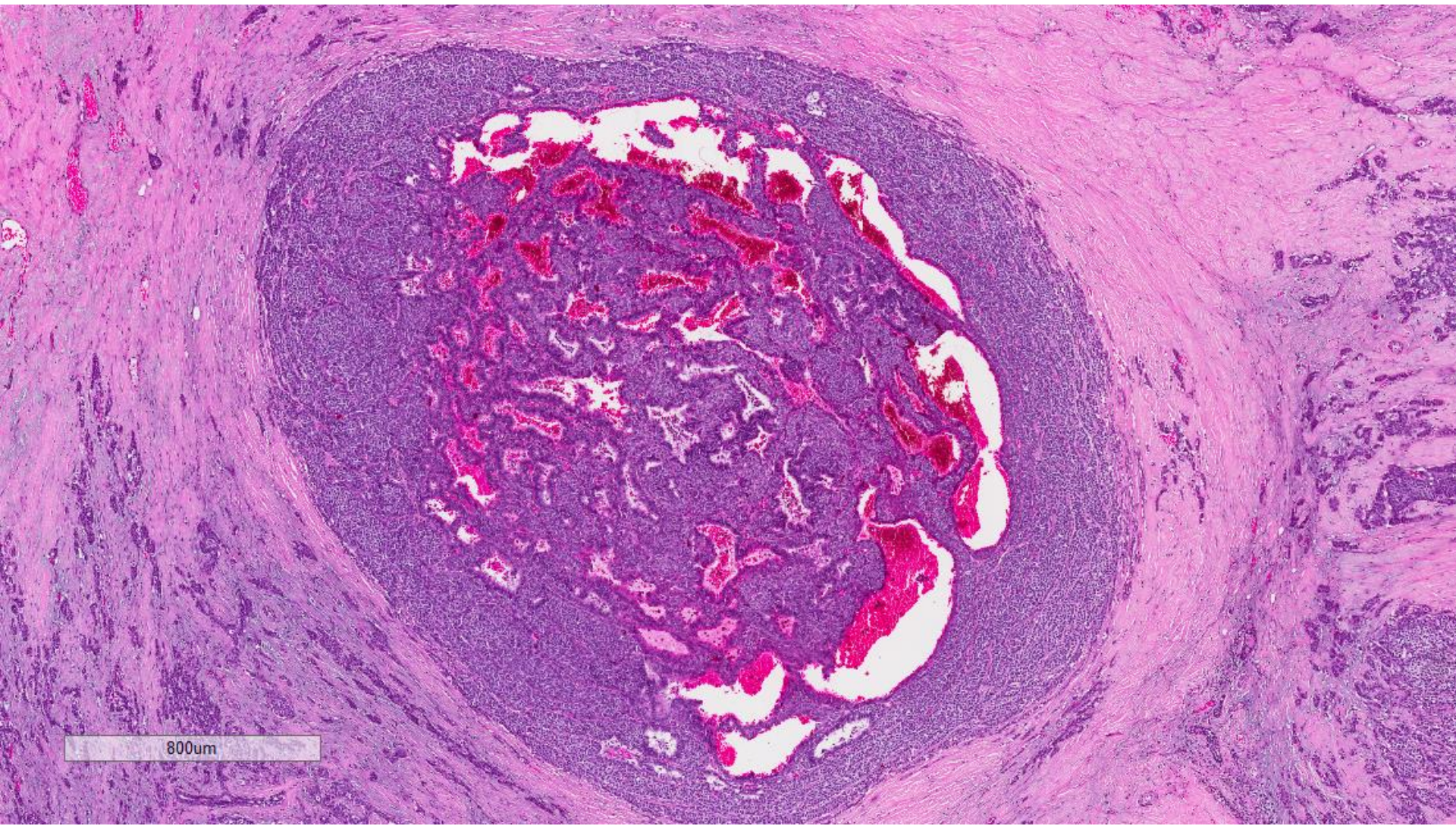
8mm



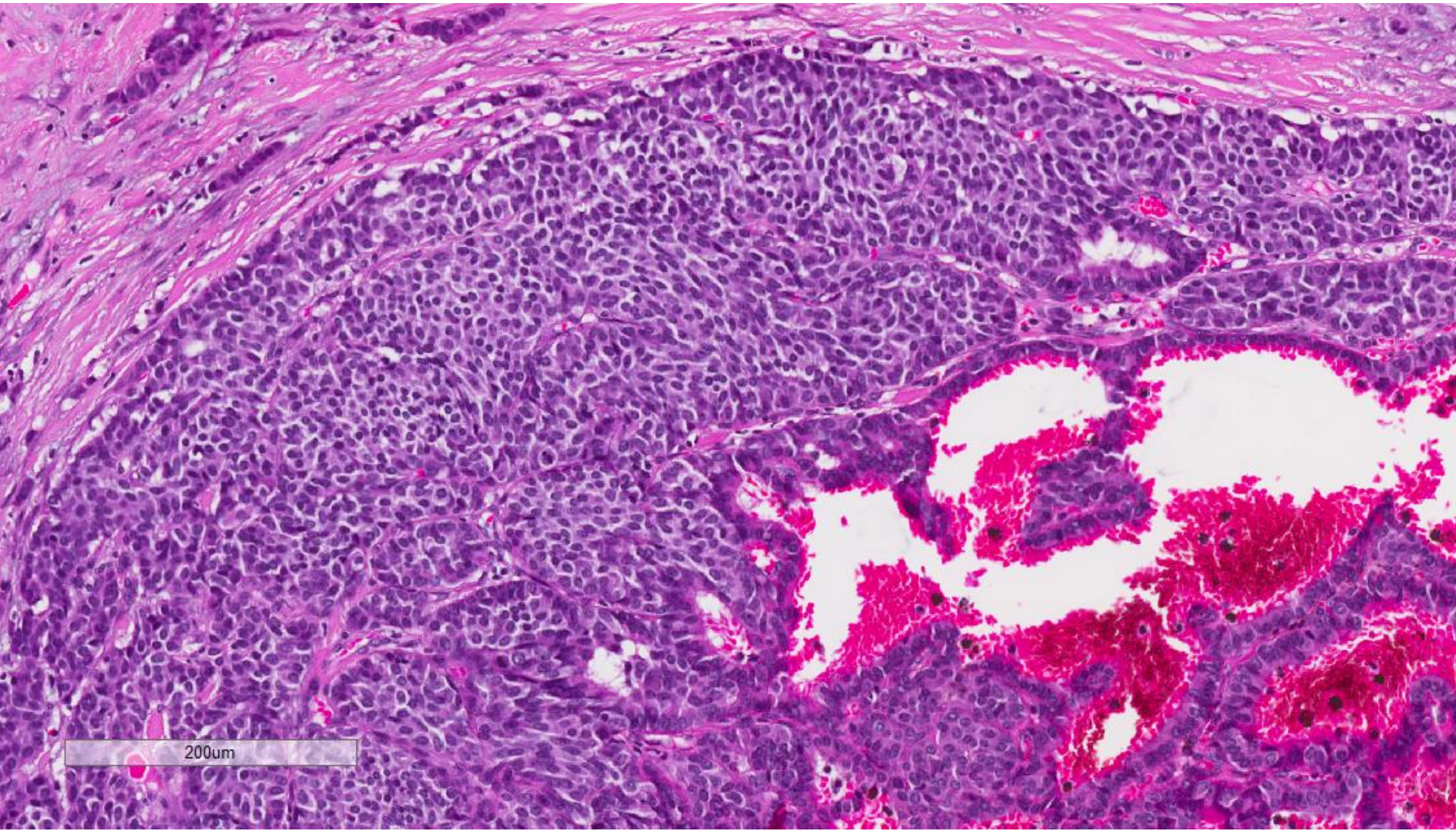
2mm



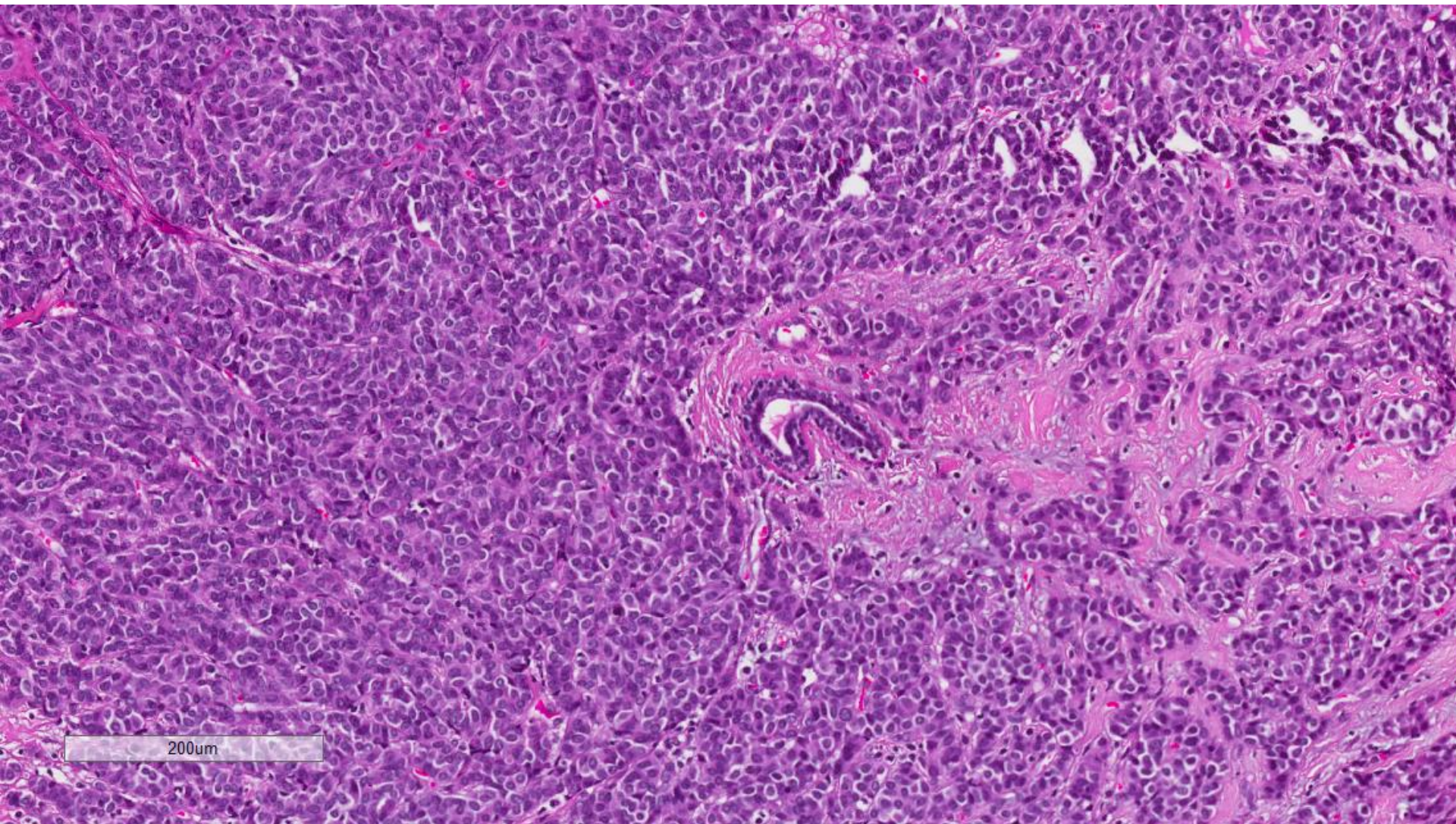
400um



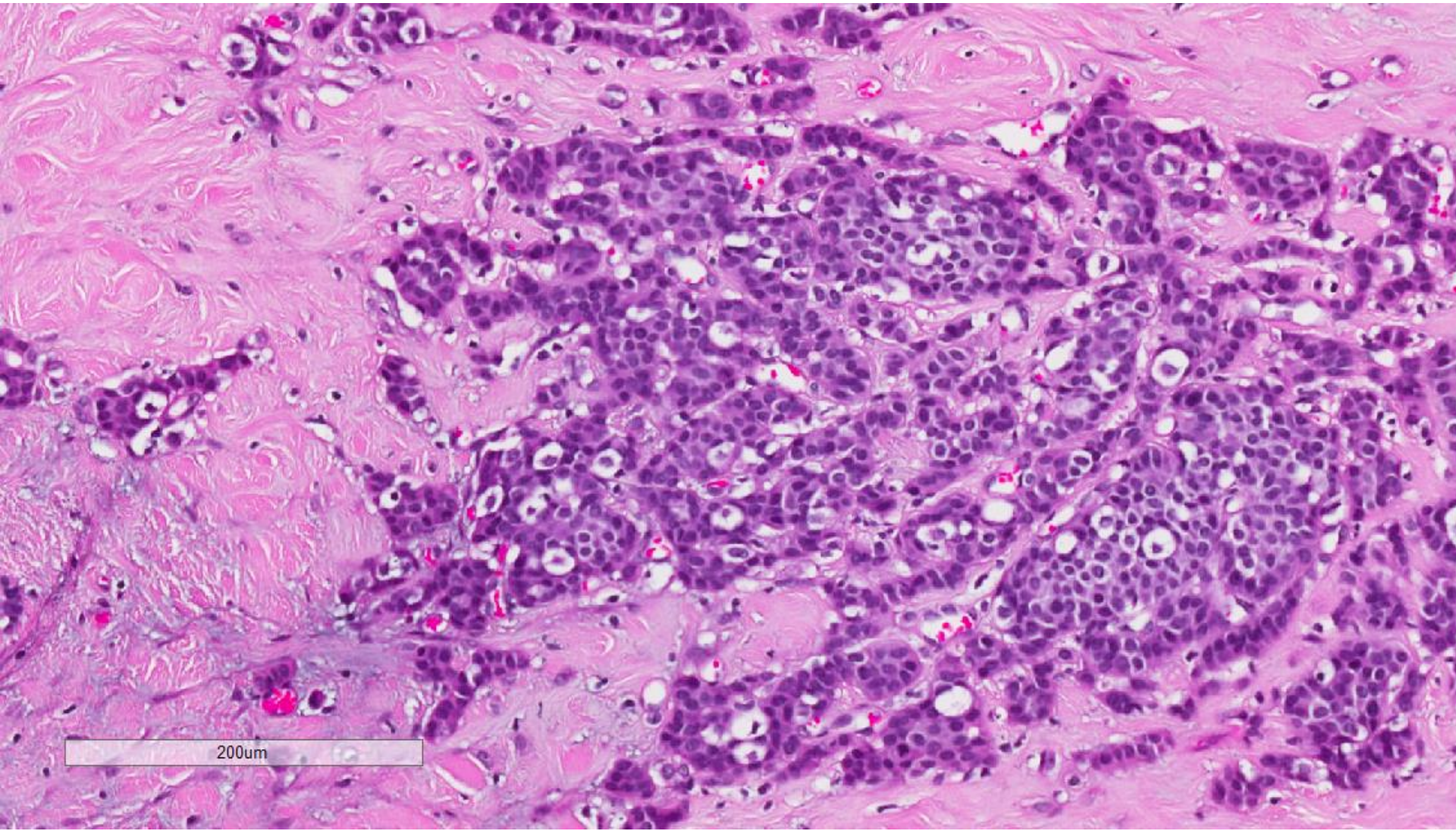
800um



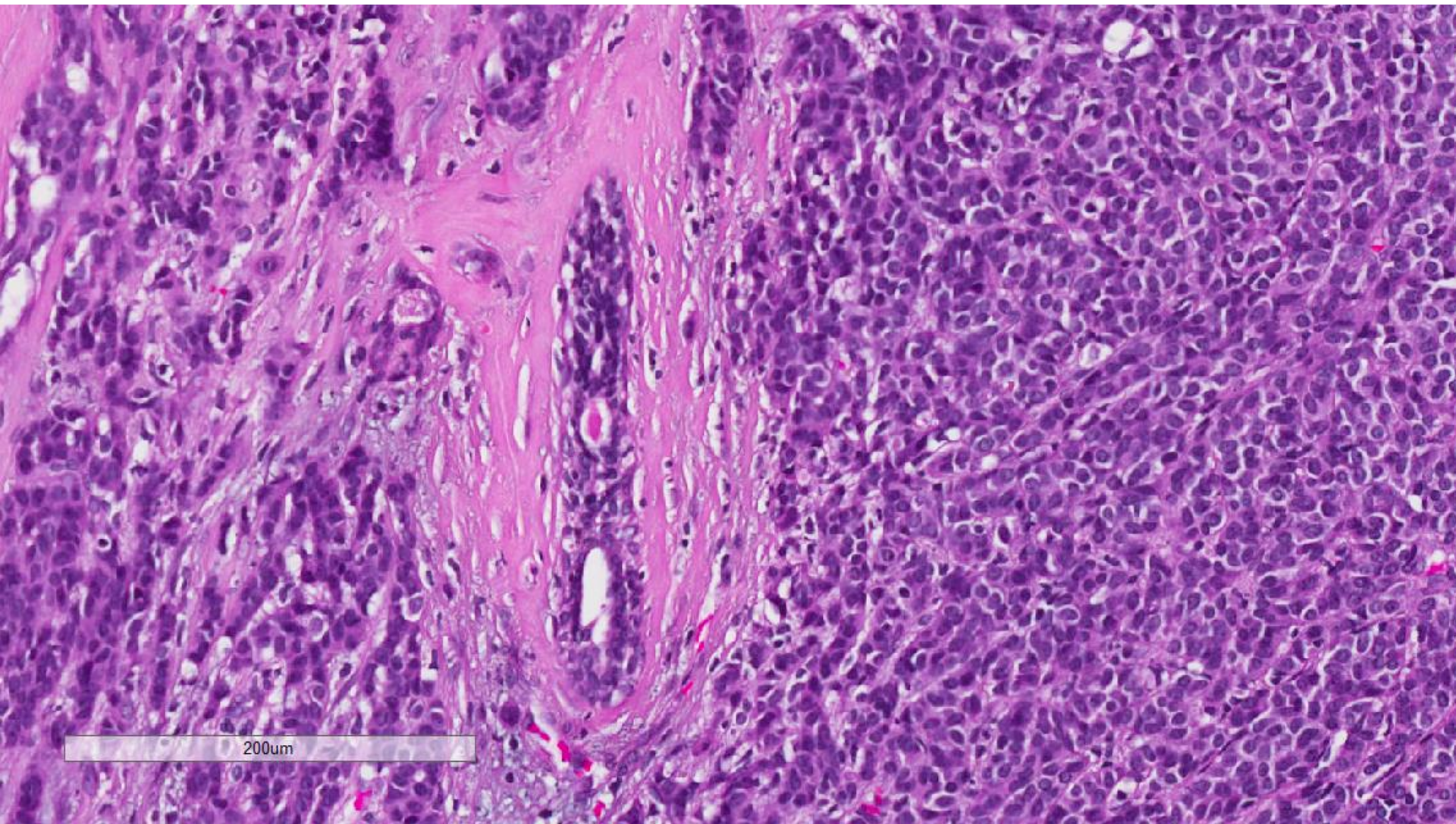
200um

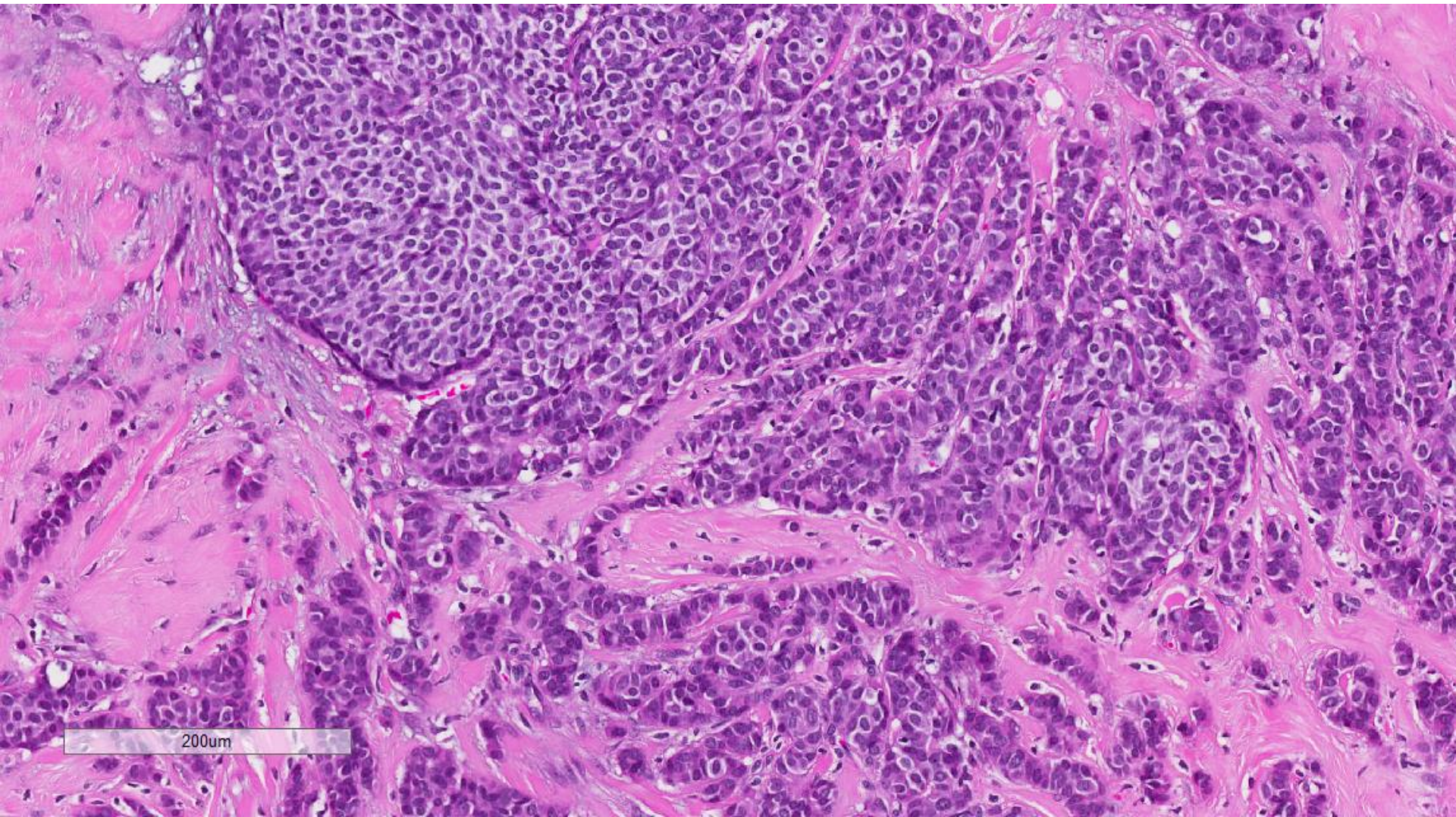


200µm



200um





Immunohistochemistry

- Synaptophysin diffusely positive.
- ER positive, PR positive, cerbB2 negative.

Invasive neuroendocrine carcinoma, well differentiated, 1.5 cm