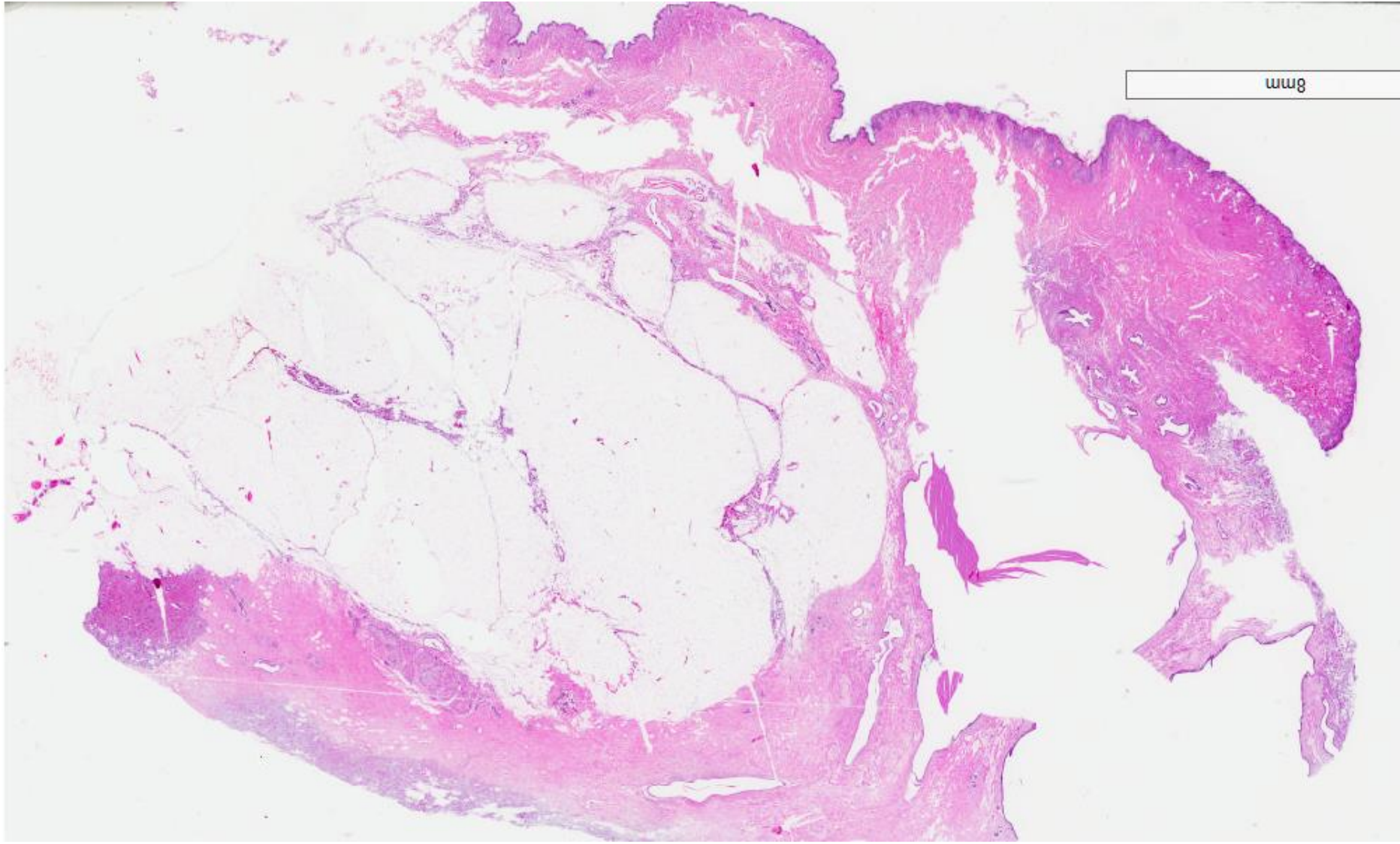


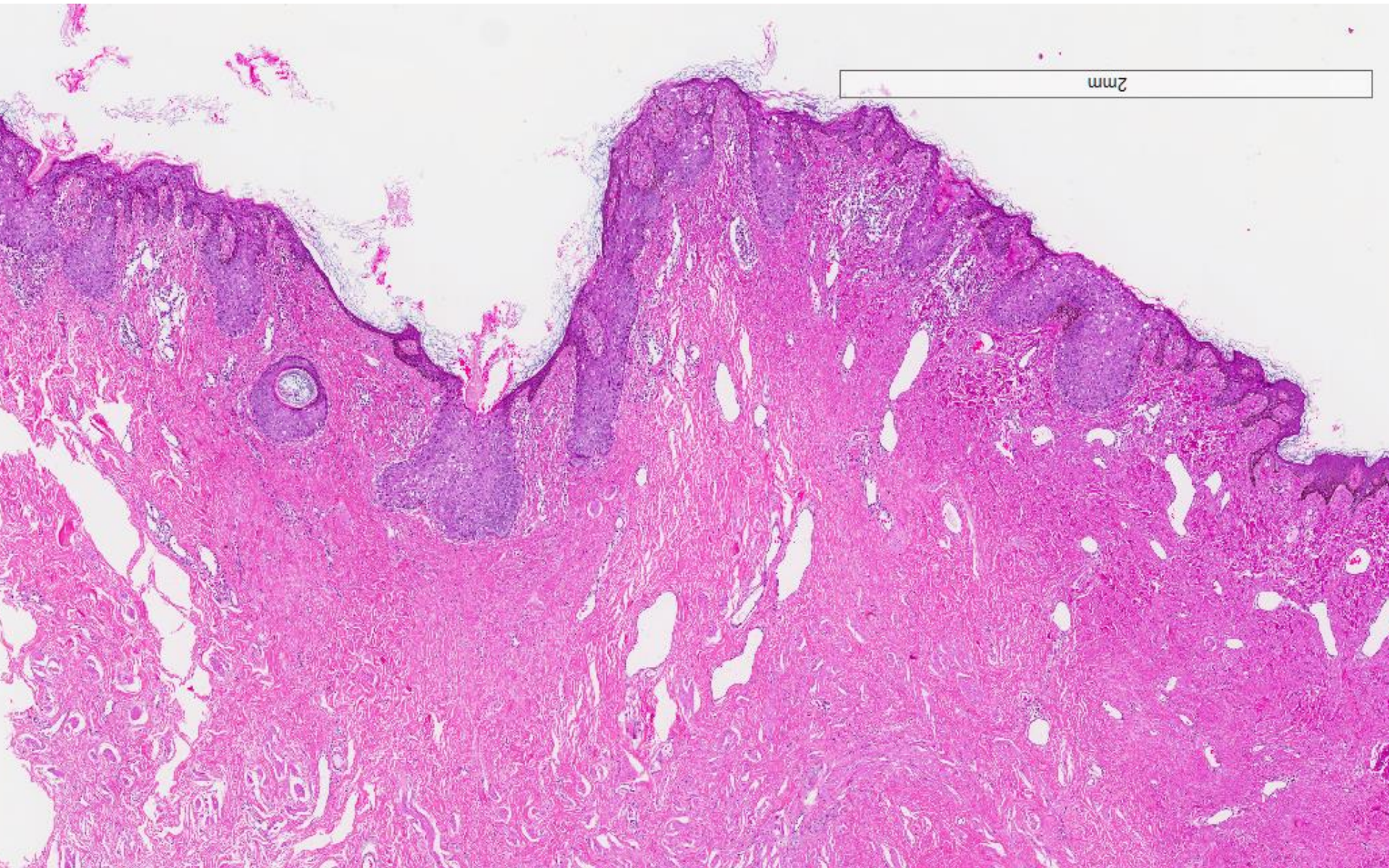
## Case 32

67 year old lady presented with a left nipple lesion.

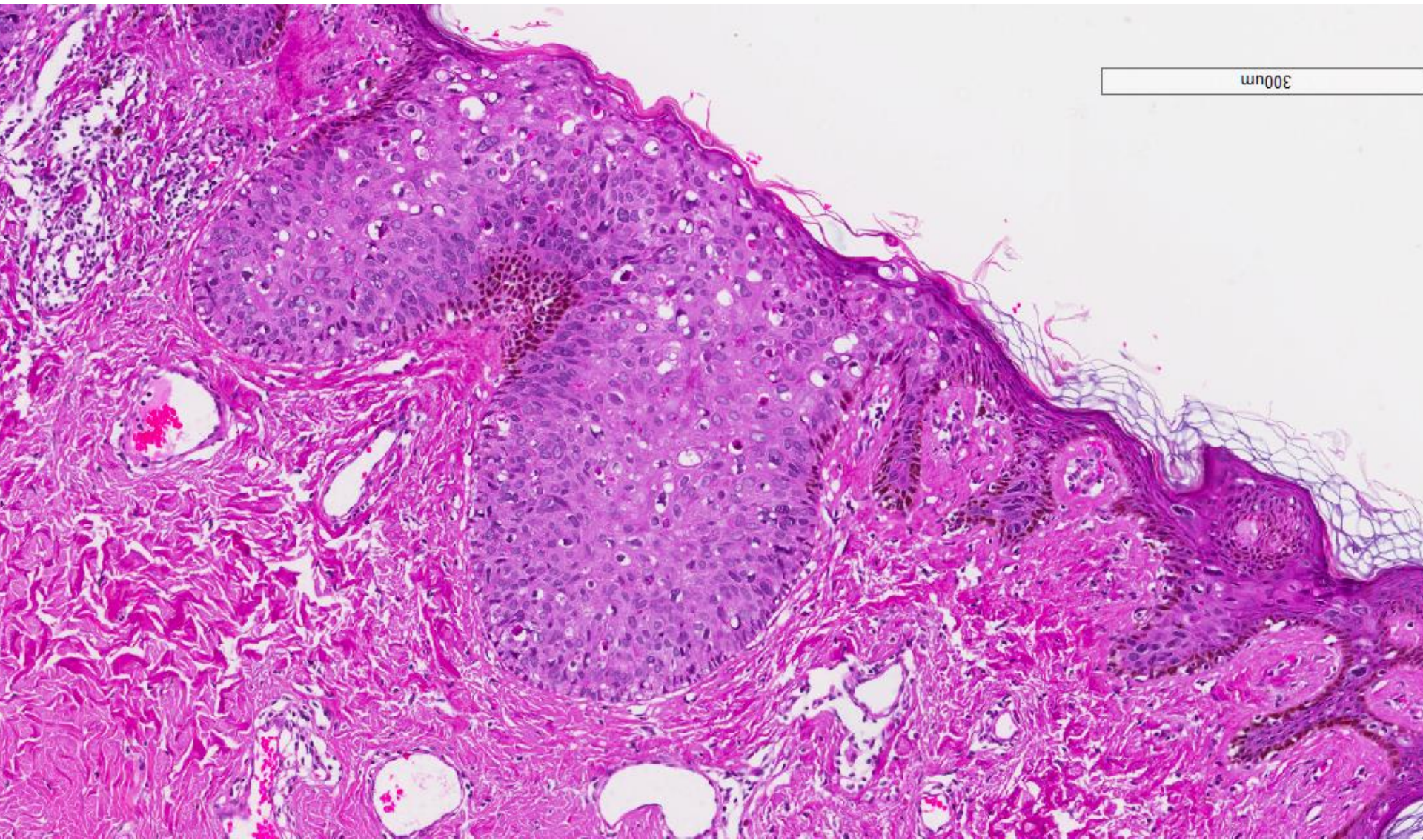
An incisional biopsy was performed, followed by a wide excision.

8mm

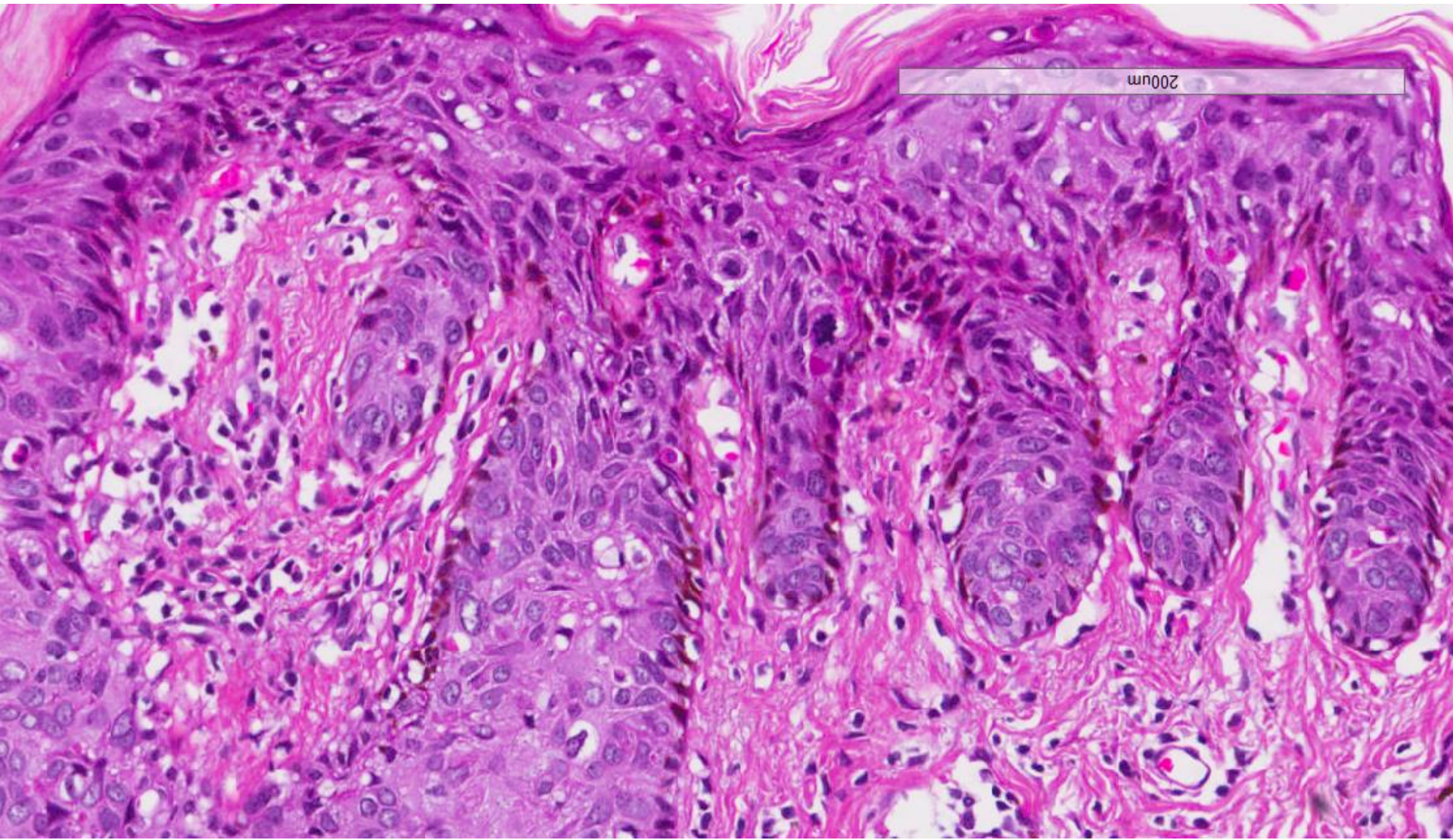




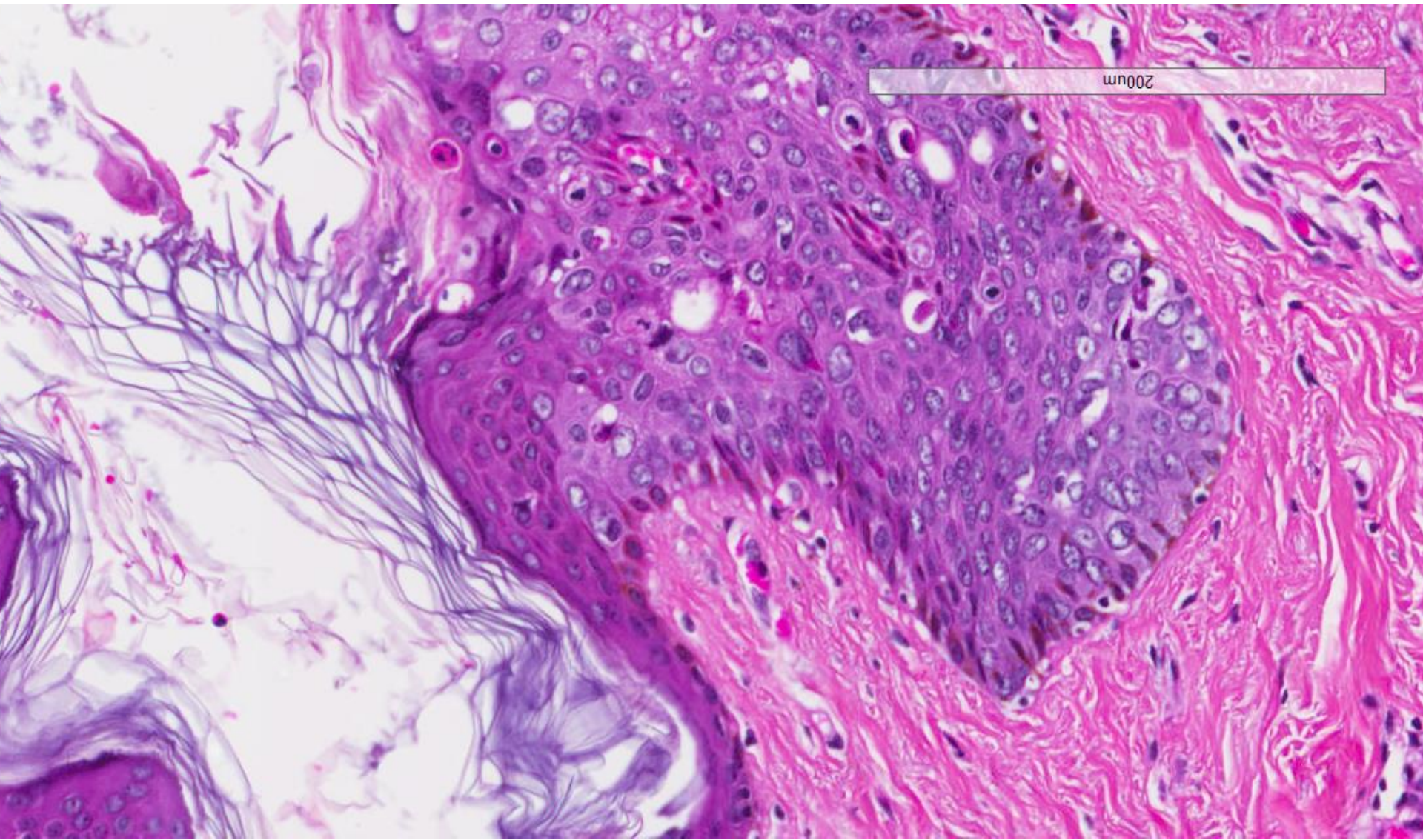
2mm



300µm

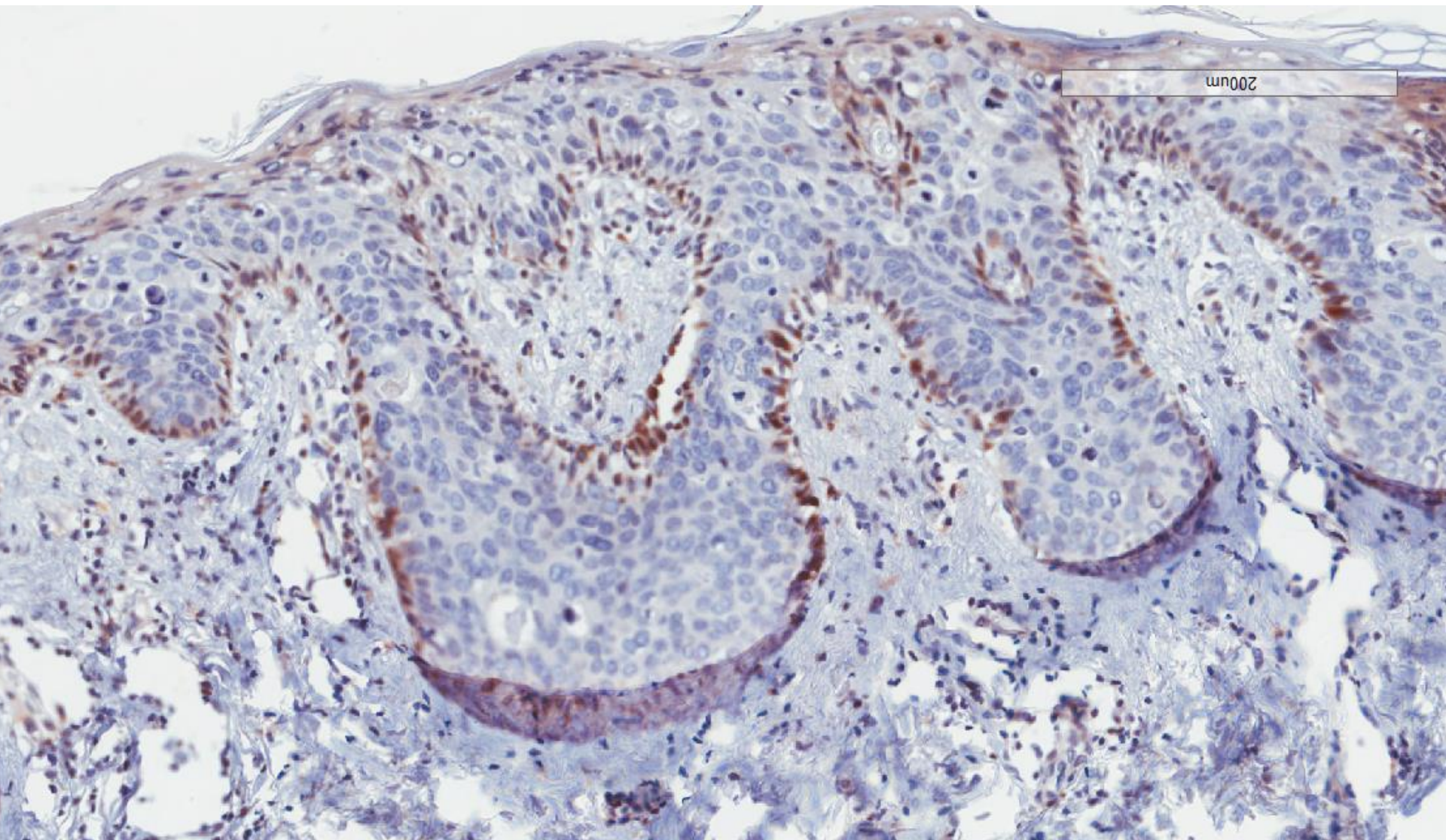


200um

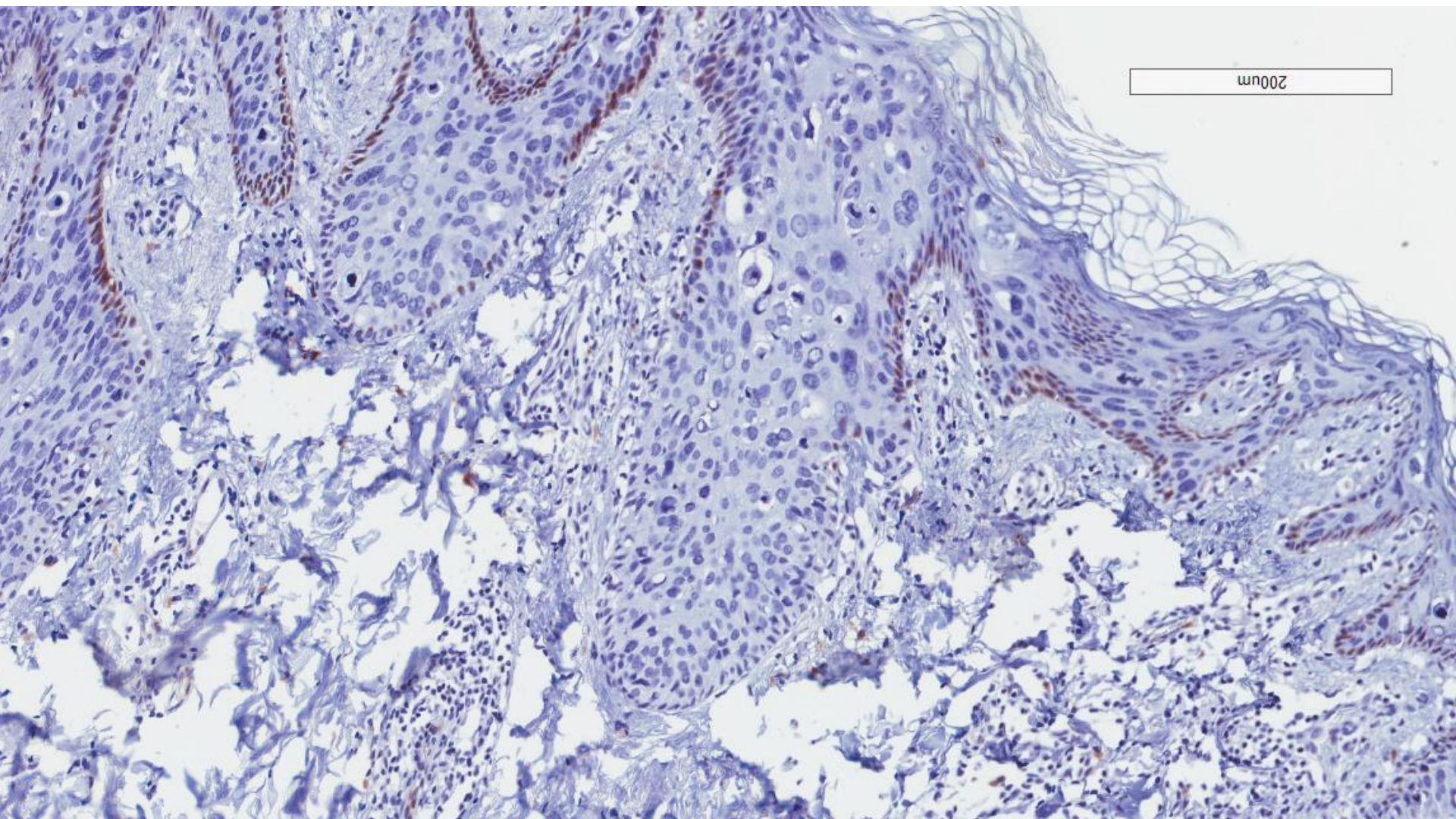


200µm

cerbB2

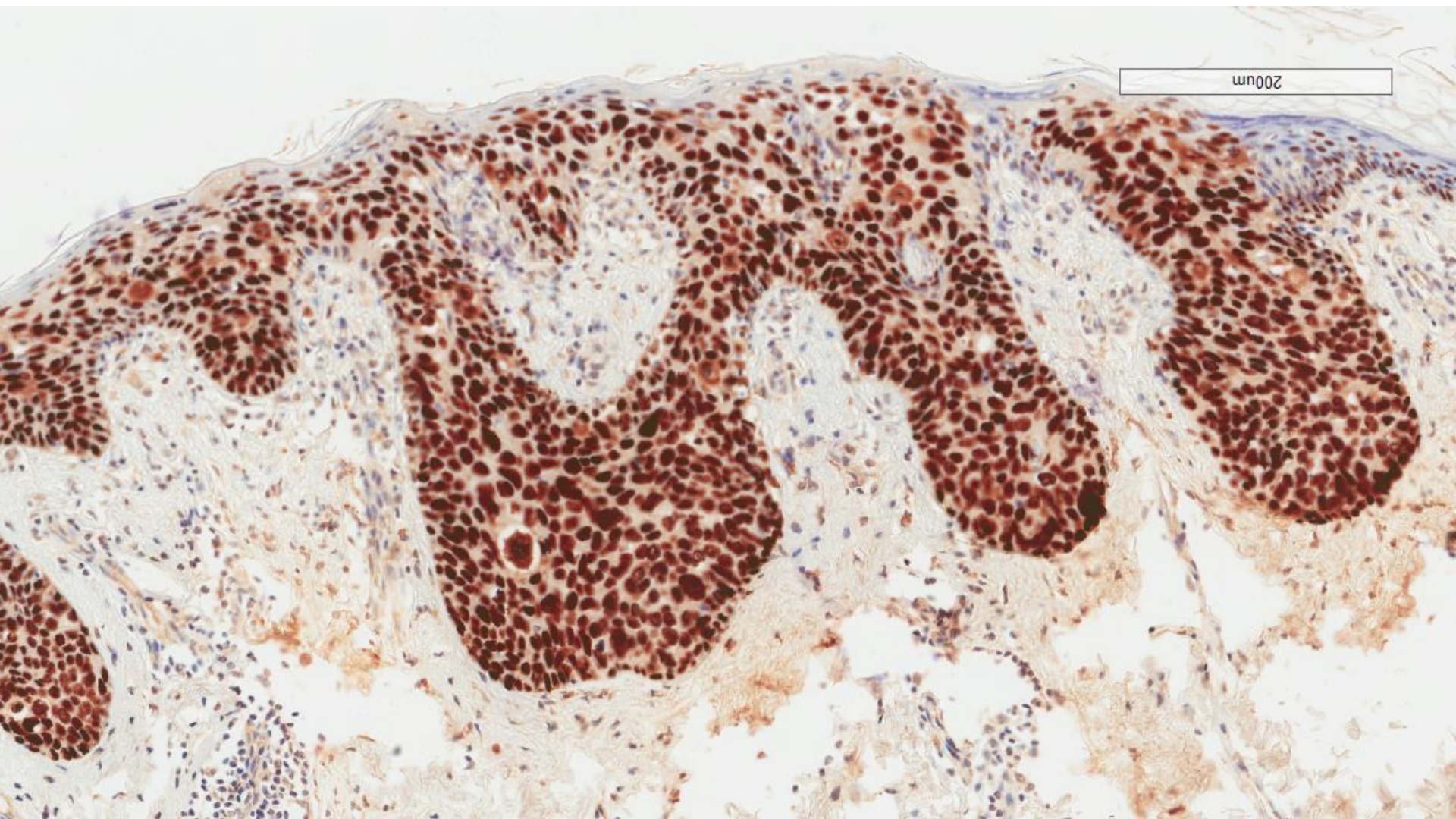


CK7

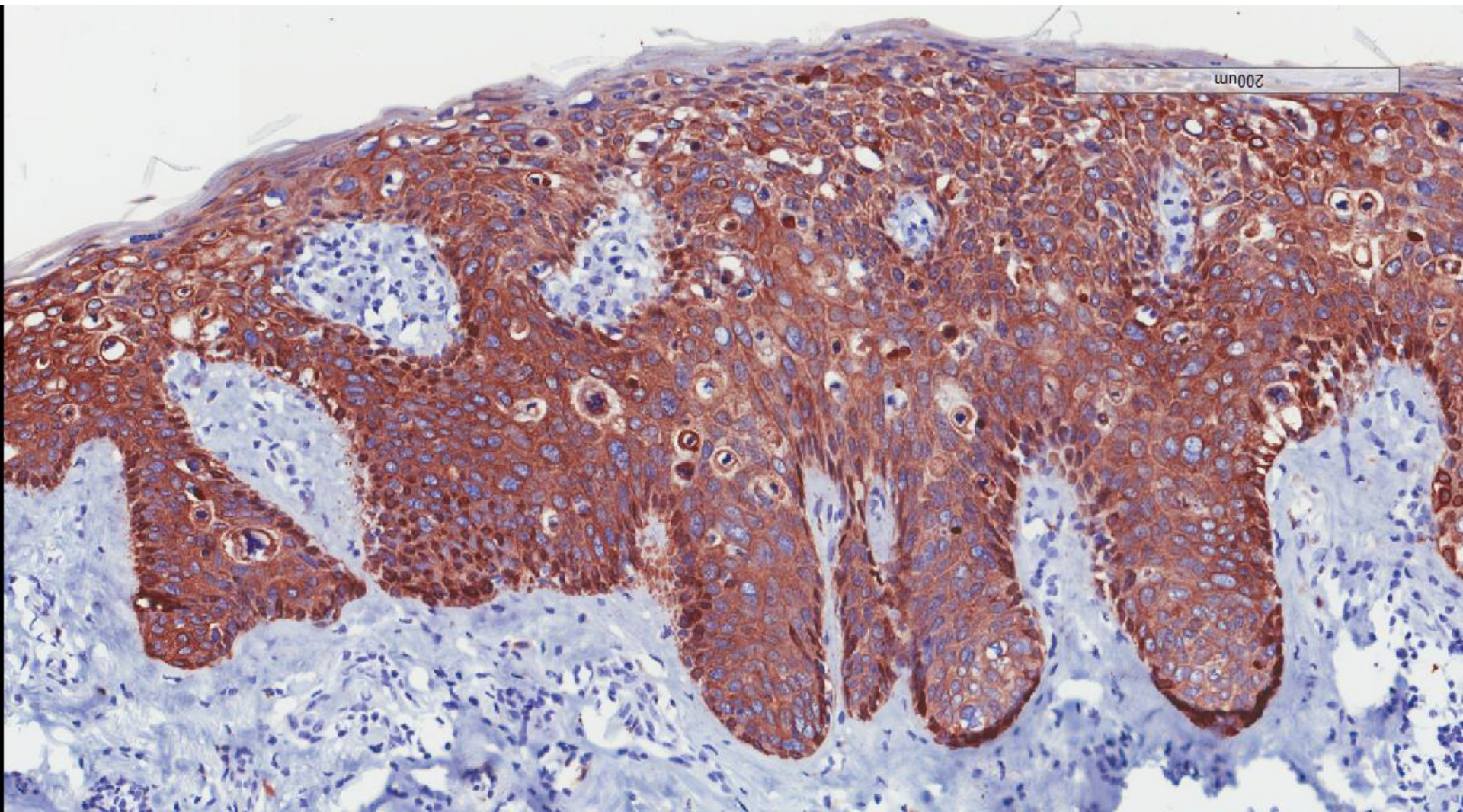




p63



34BE12



# Squamous carcinoma in situ (Bowen's disease) of the nipple

# Bowen's disease of the nipple

- Mimic of Paget disease.
- Paget disease is positive for CK7, while Bowen's disease and malignant melanoma are negative.
- Malignant melanoma is positive for S100 protein, which is negative in Paget disease and Bowen disease.
- Paget cells have to be distinguished from Toker cells, and from breast carcinoma invading the skin and nipple.