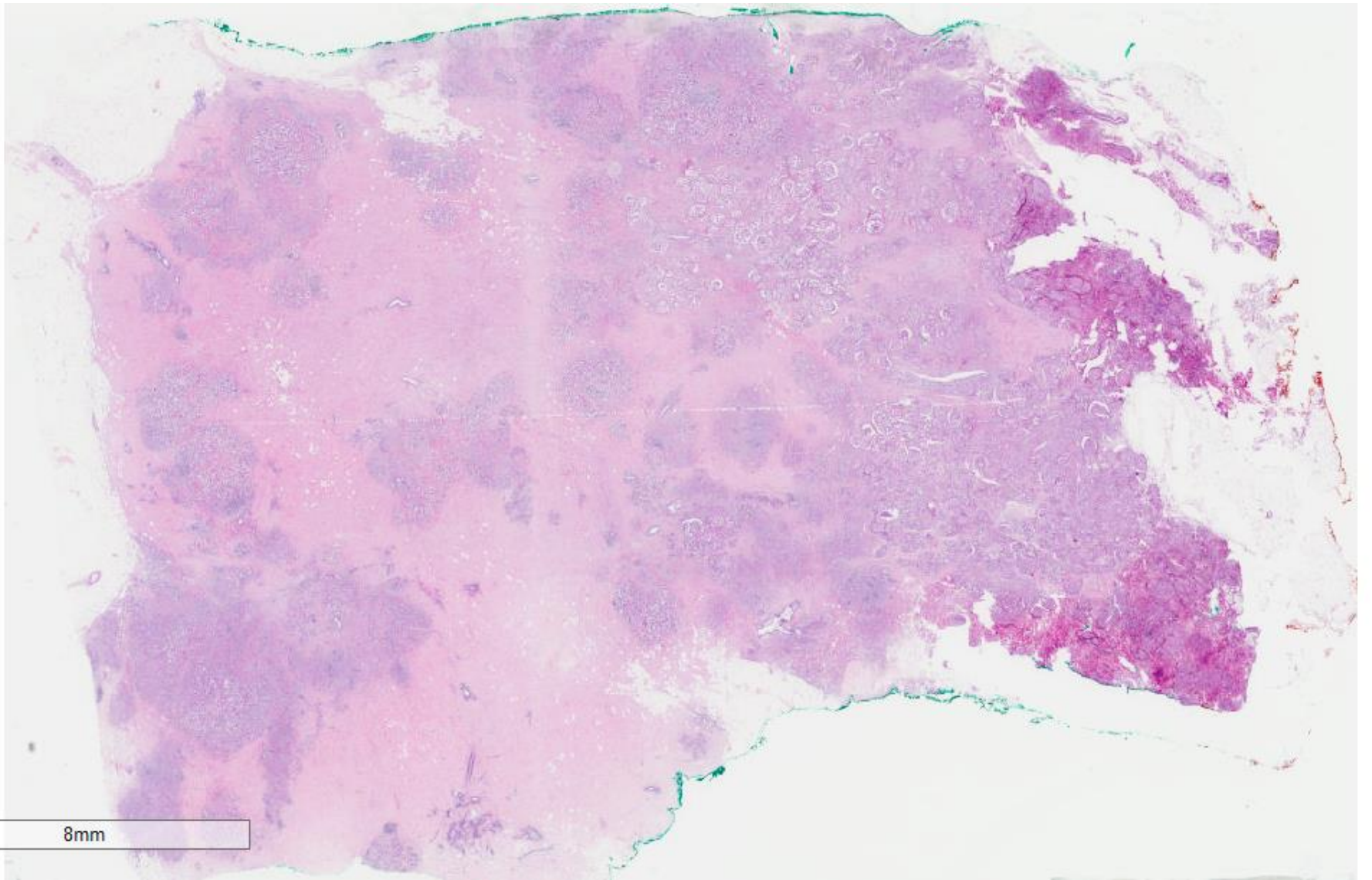


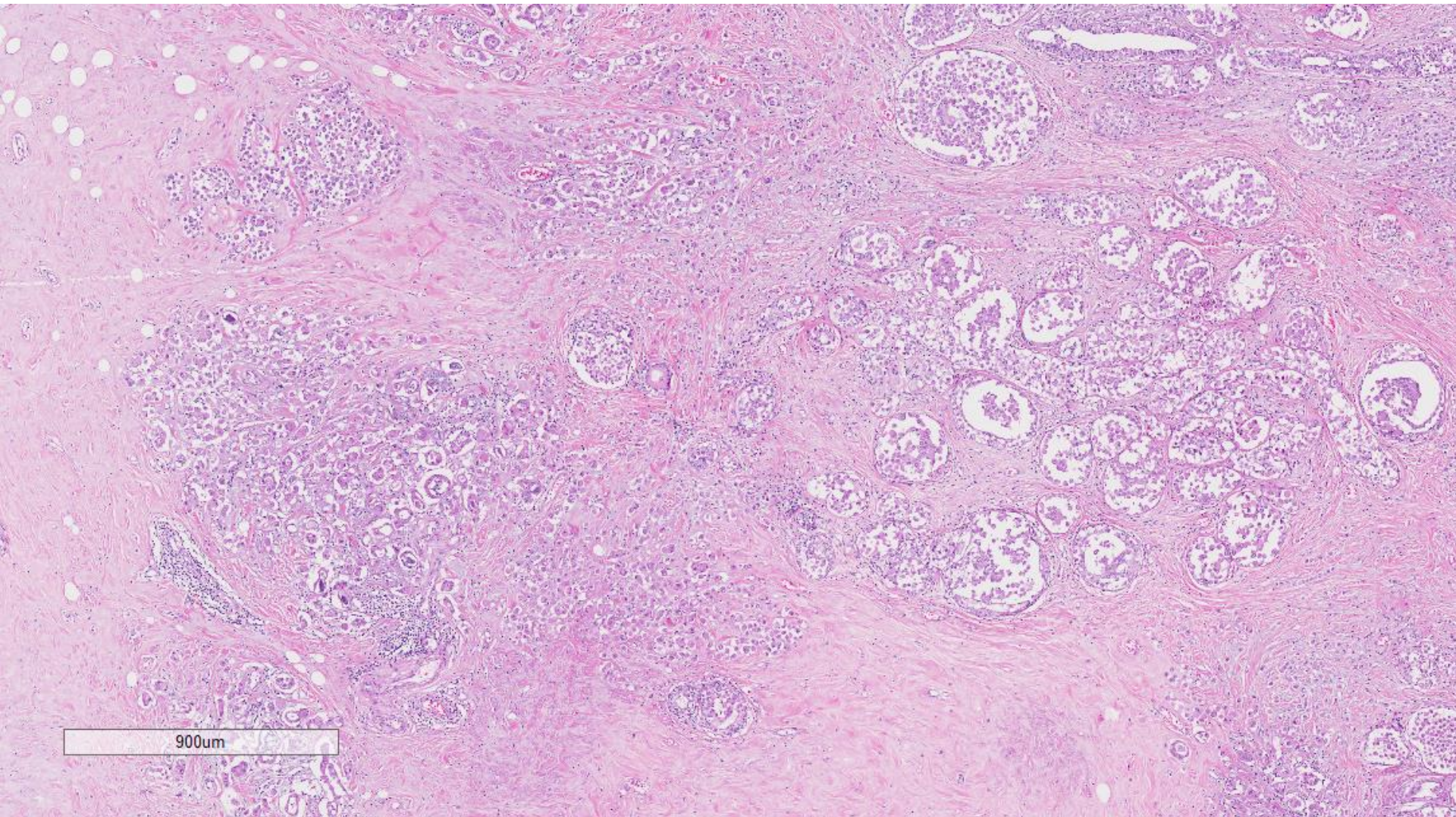
Case 31

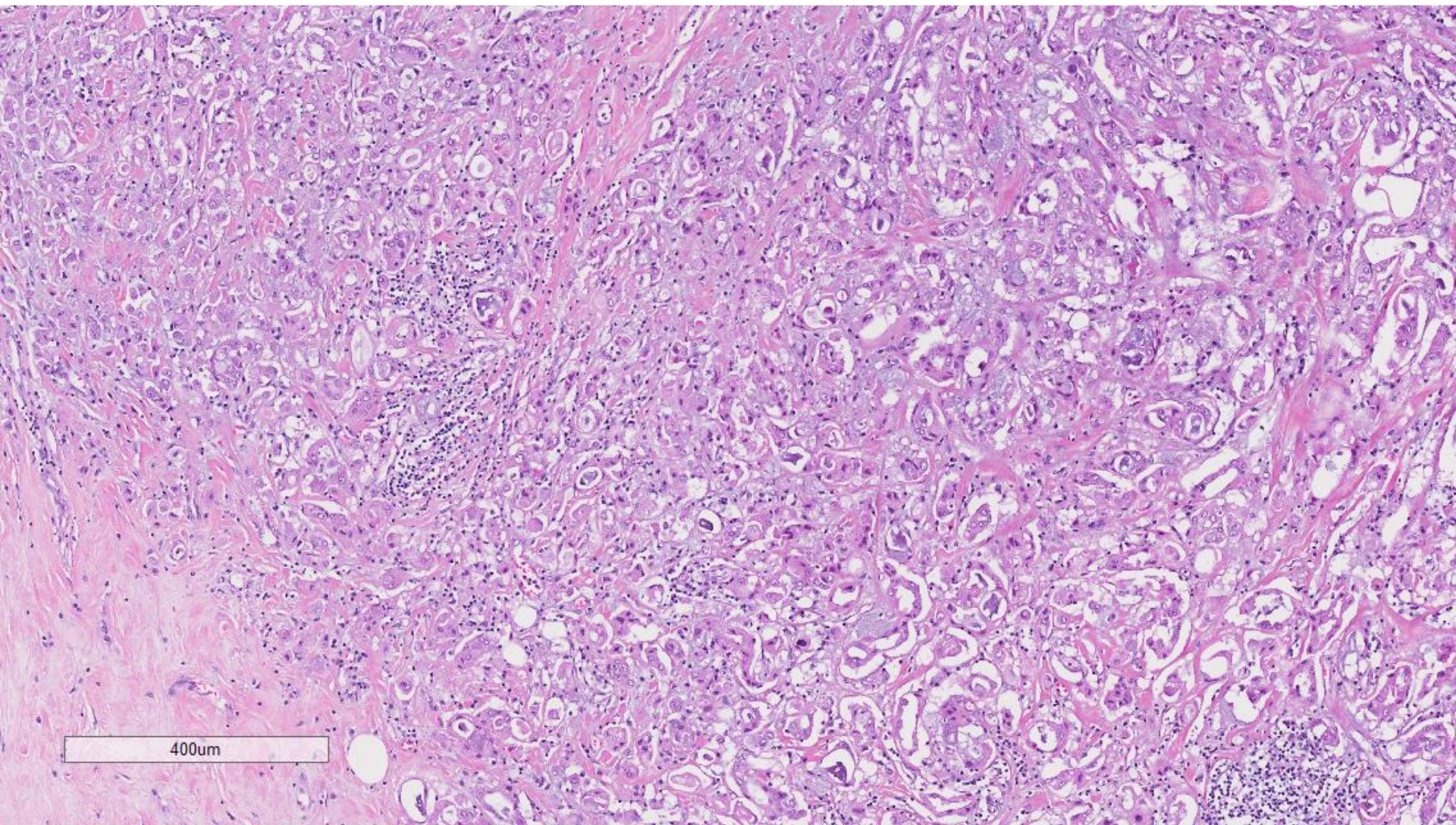
71 year old lady presented with a right breast mass.

Mastectomy and axillary nodal dissection were performed.

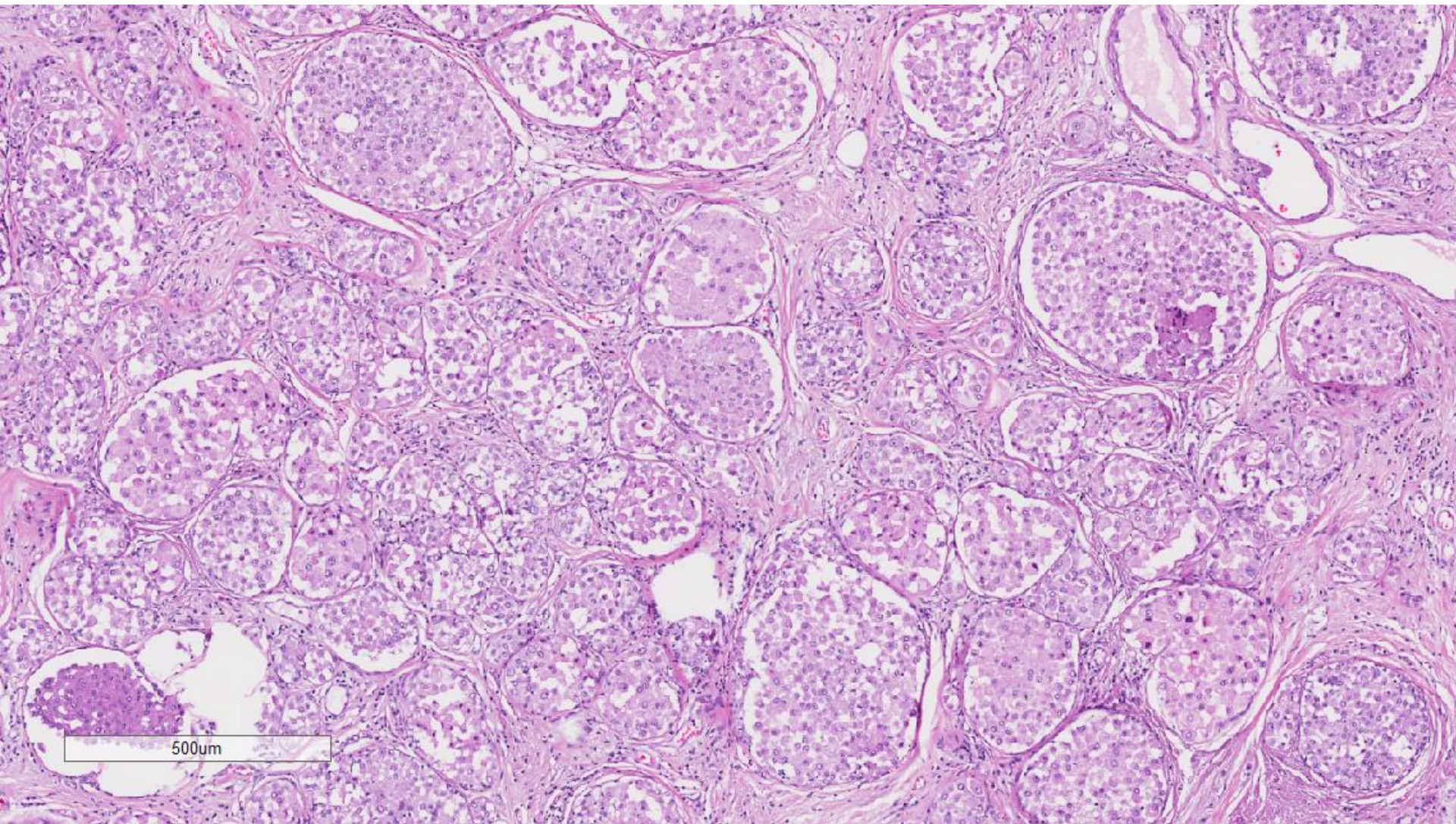


8mm

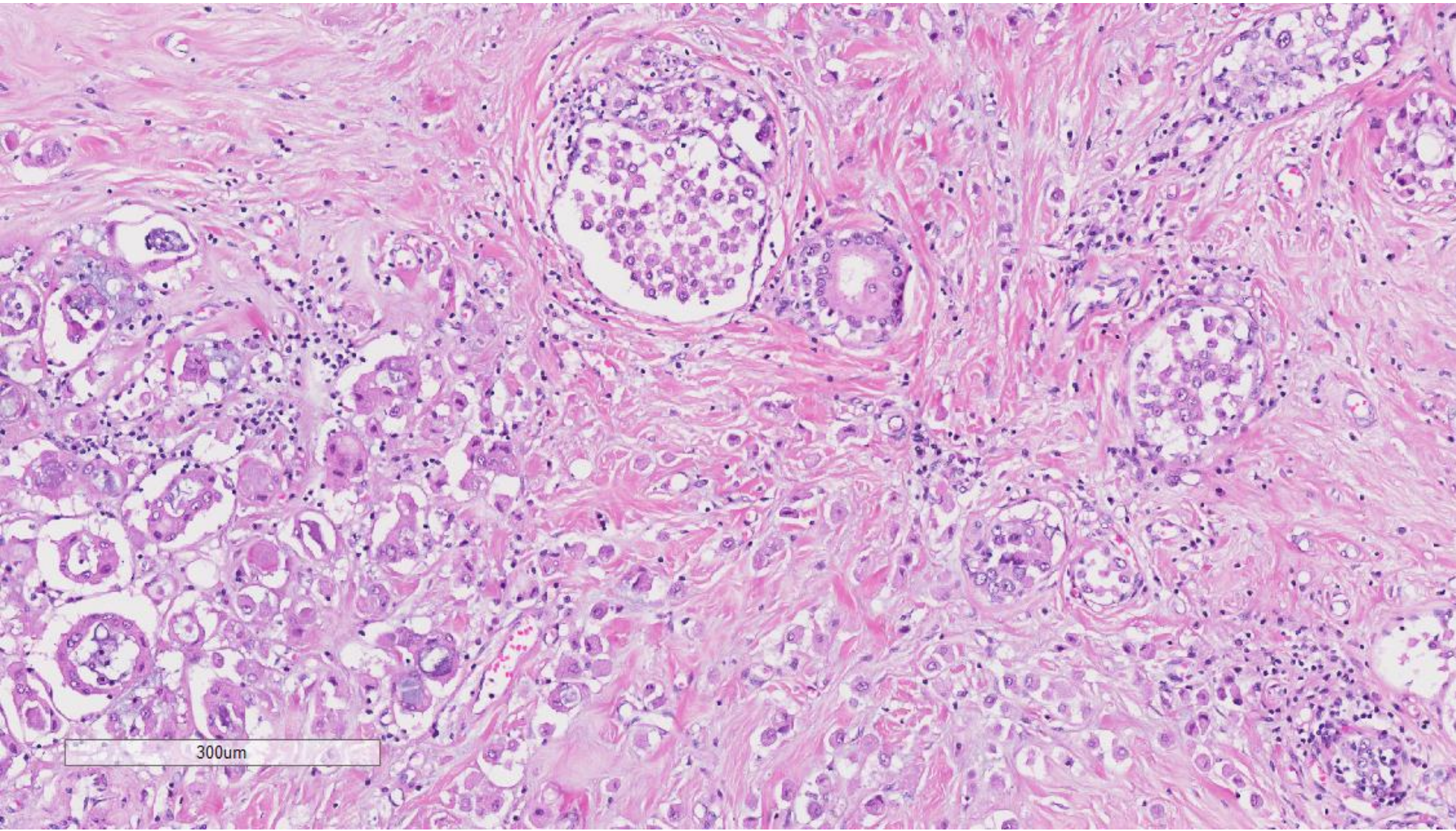


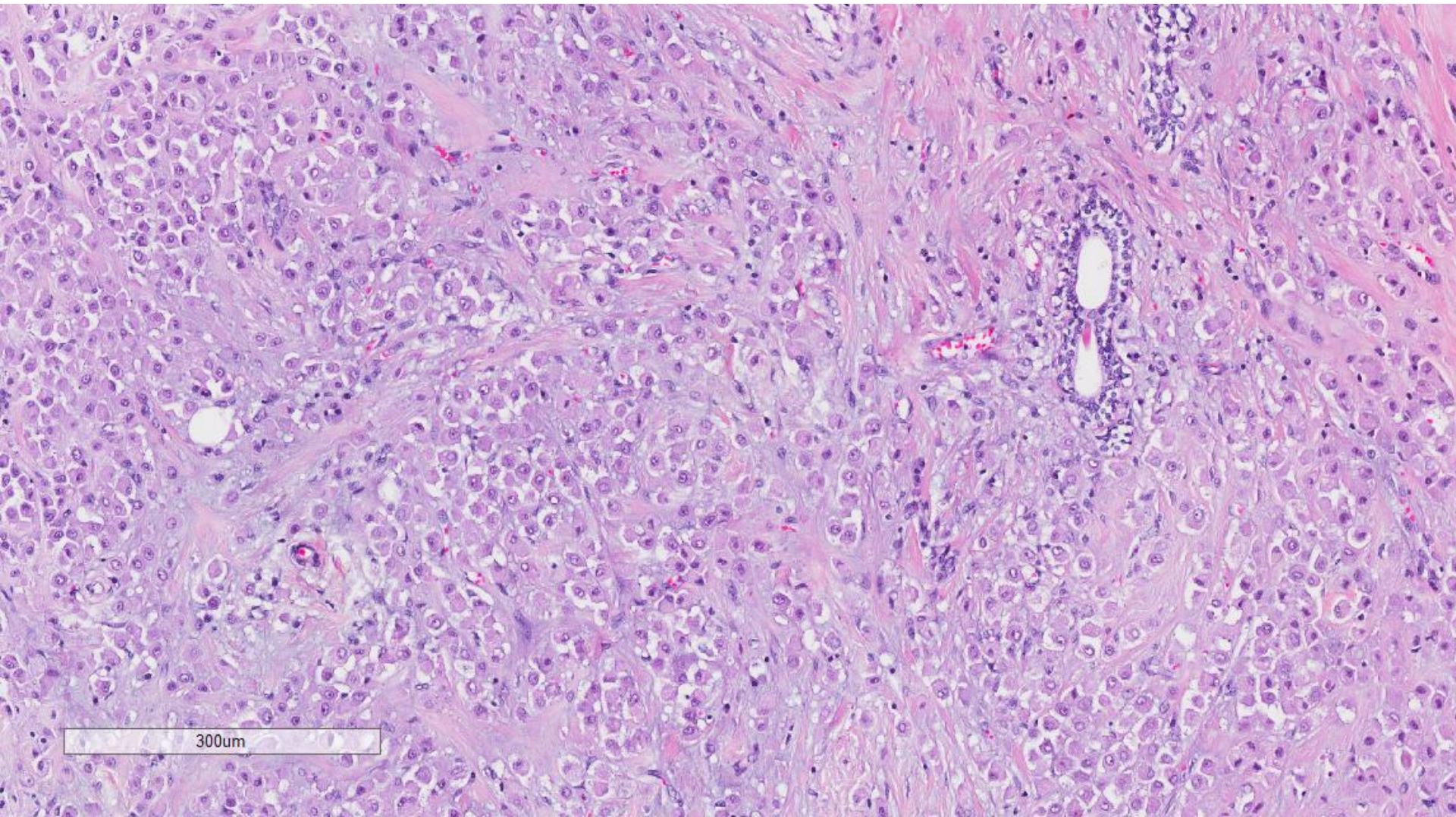


400um

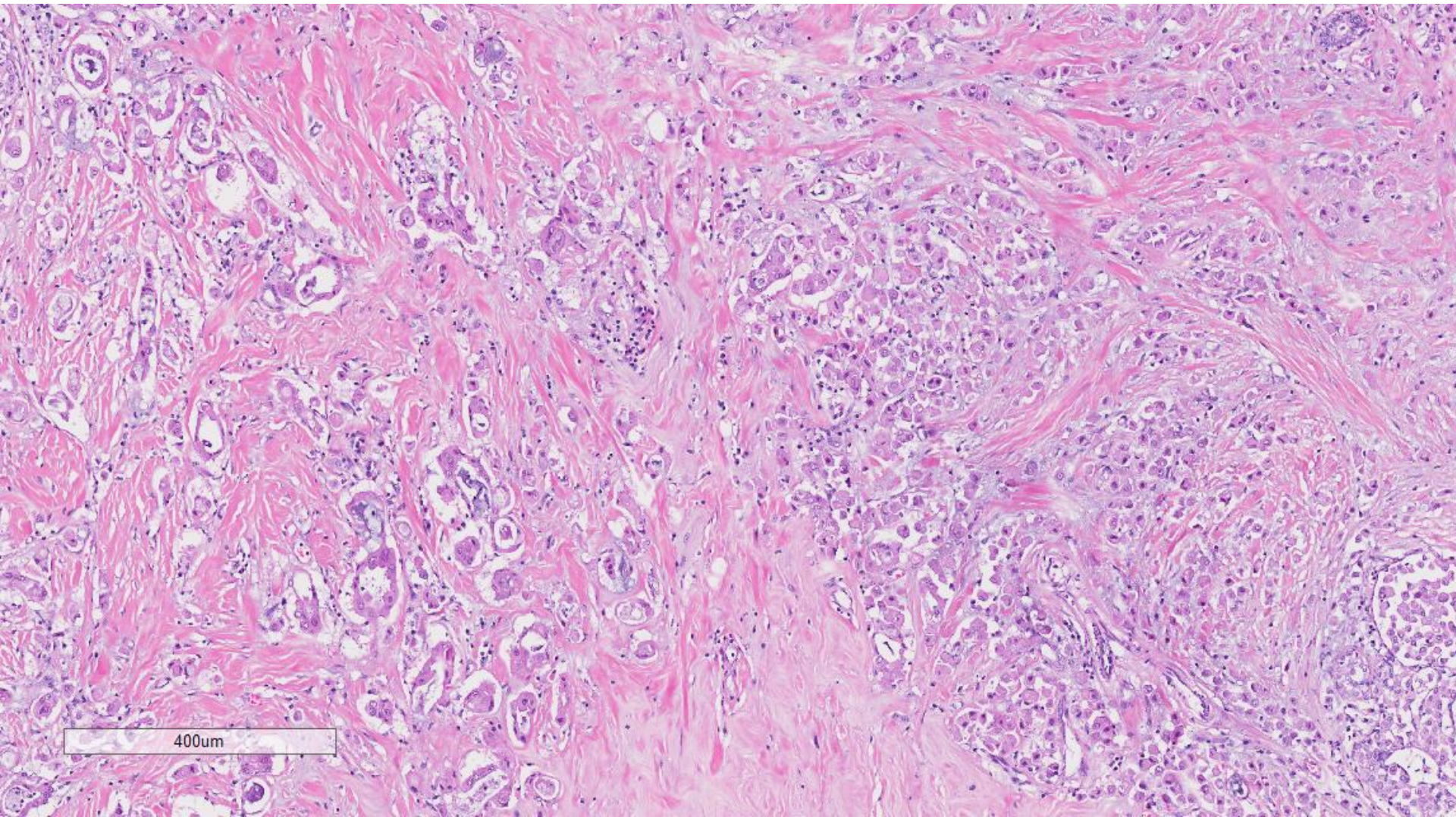


500µm

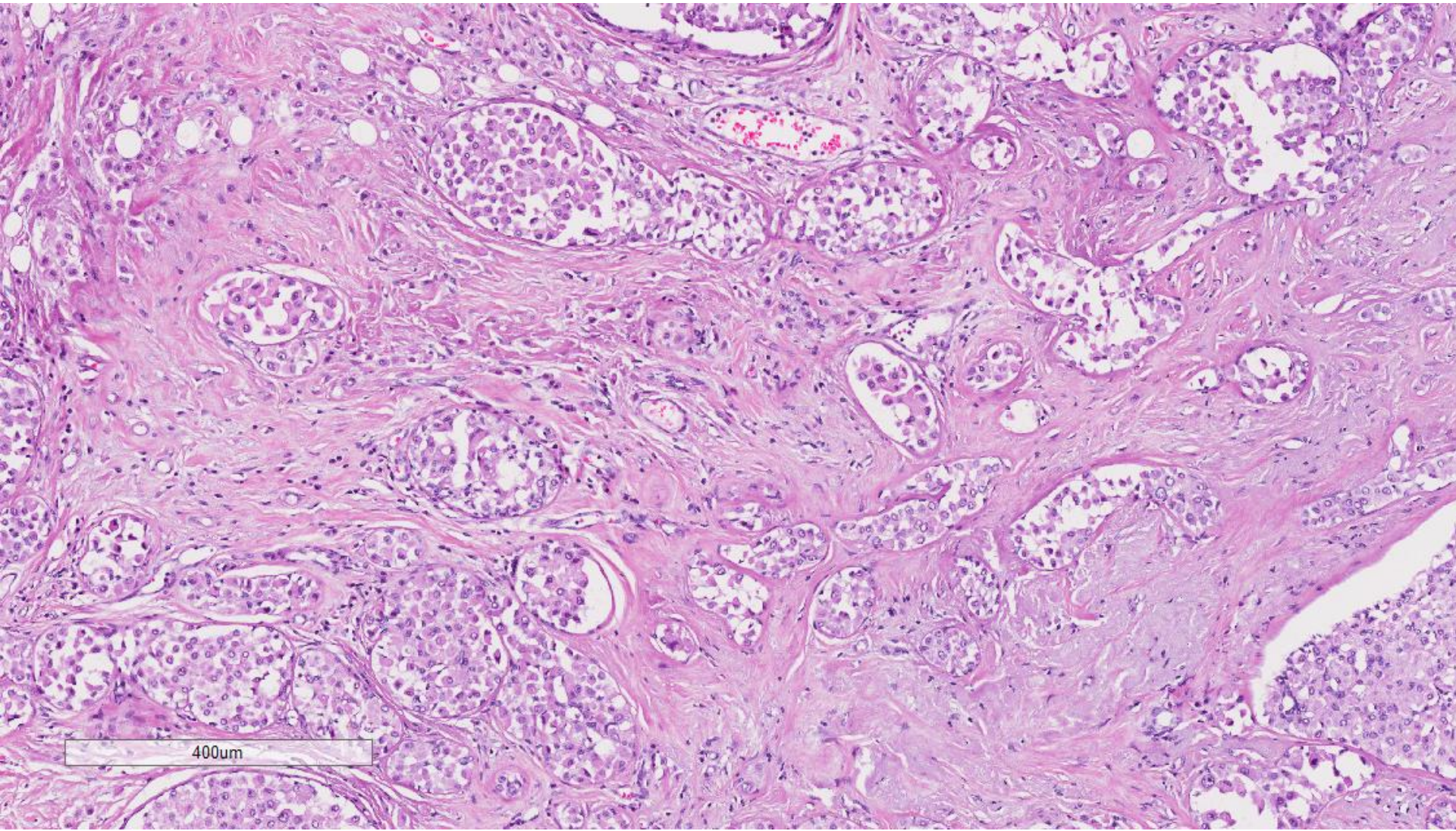




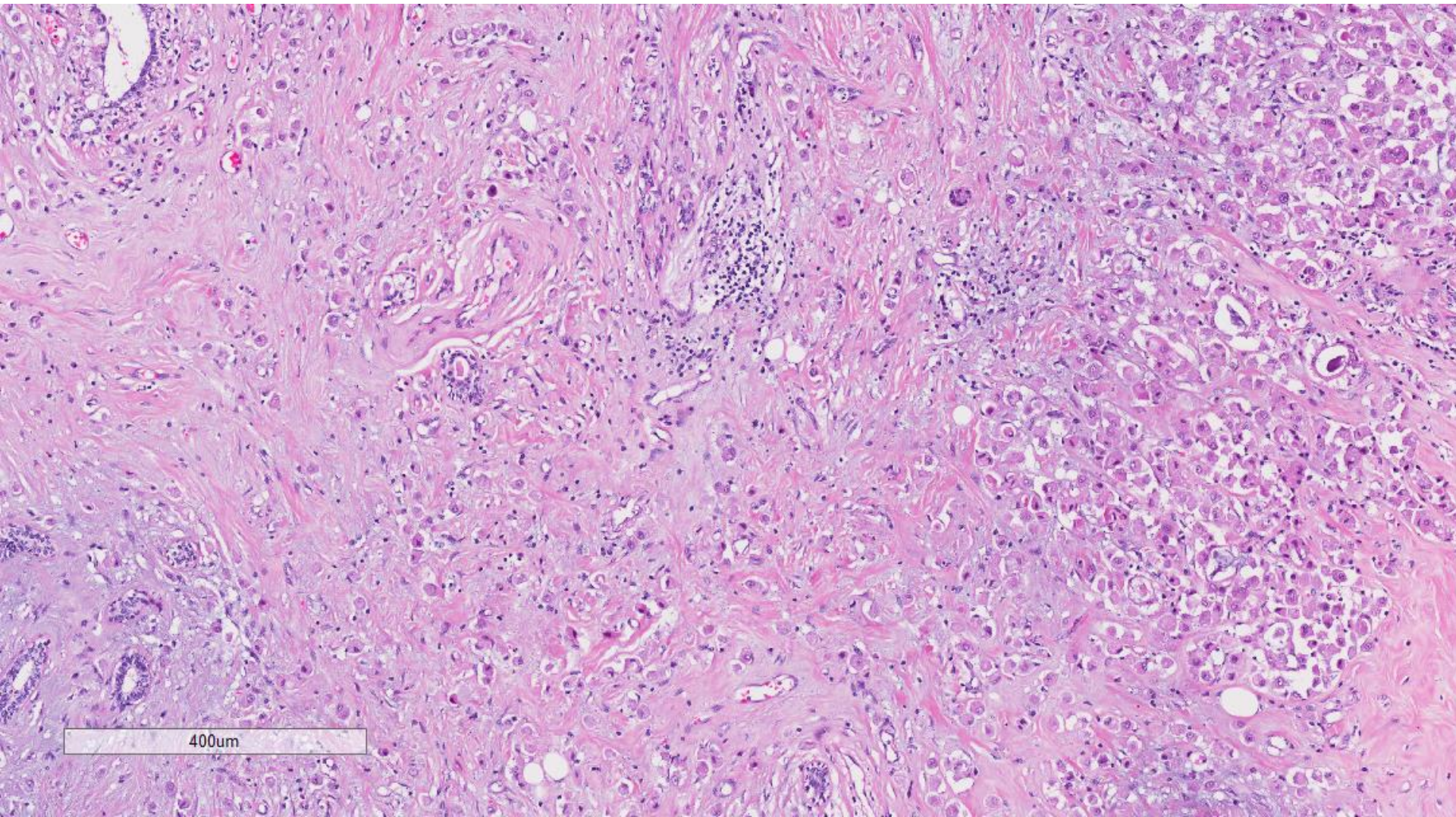
300um



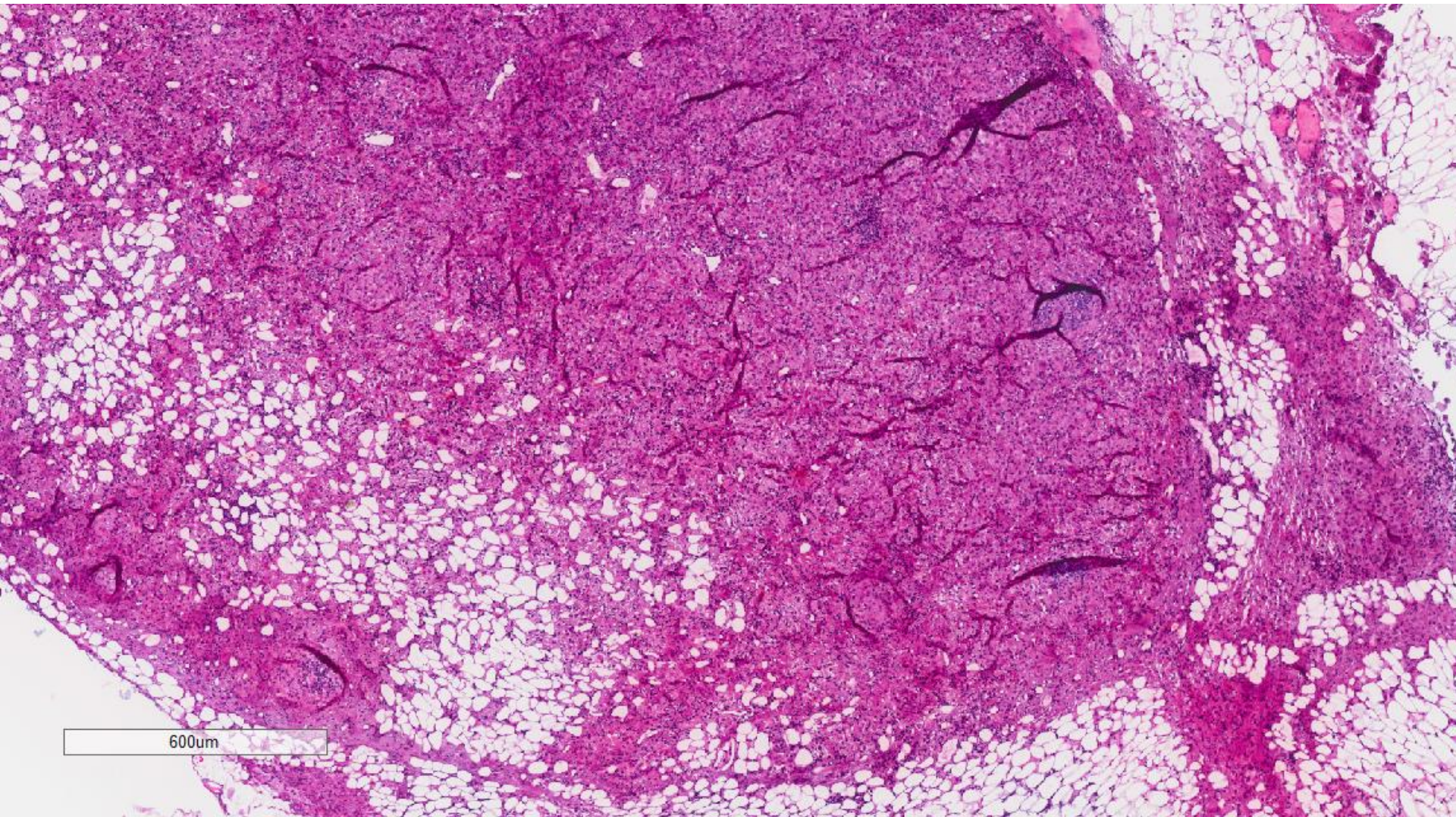
400um



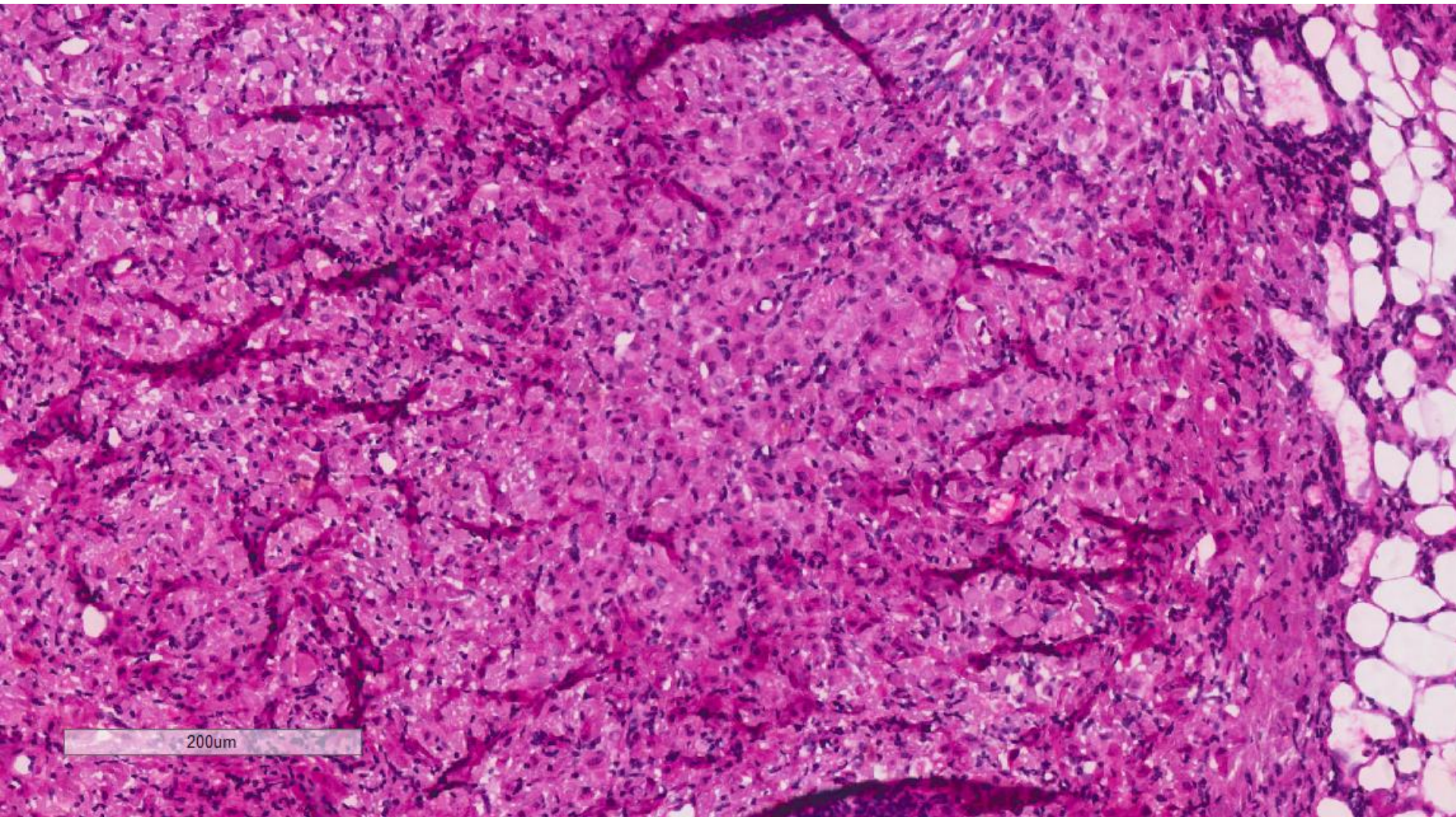
400um



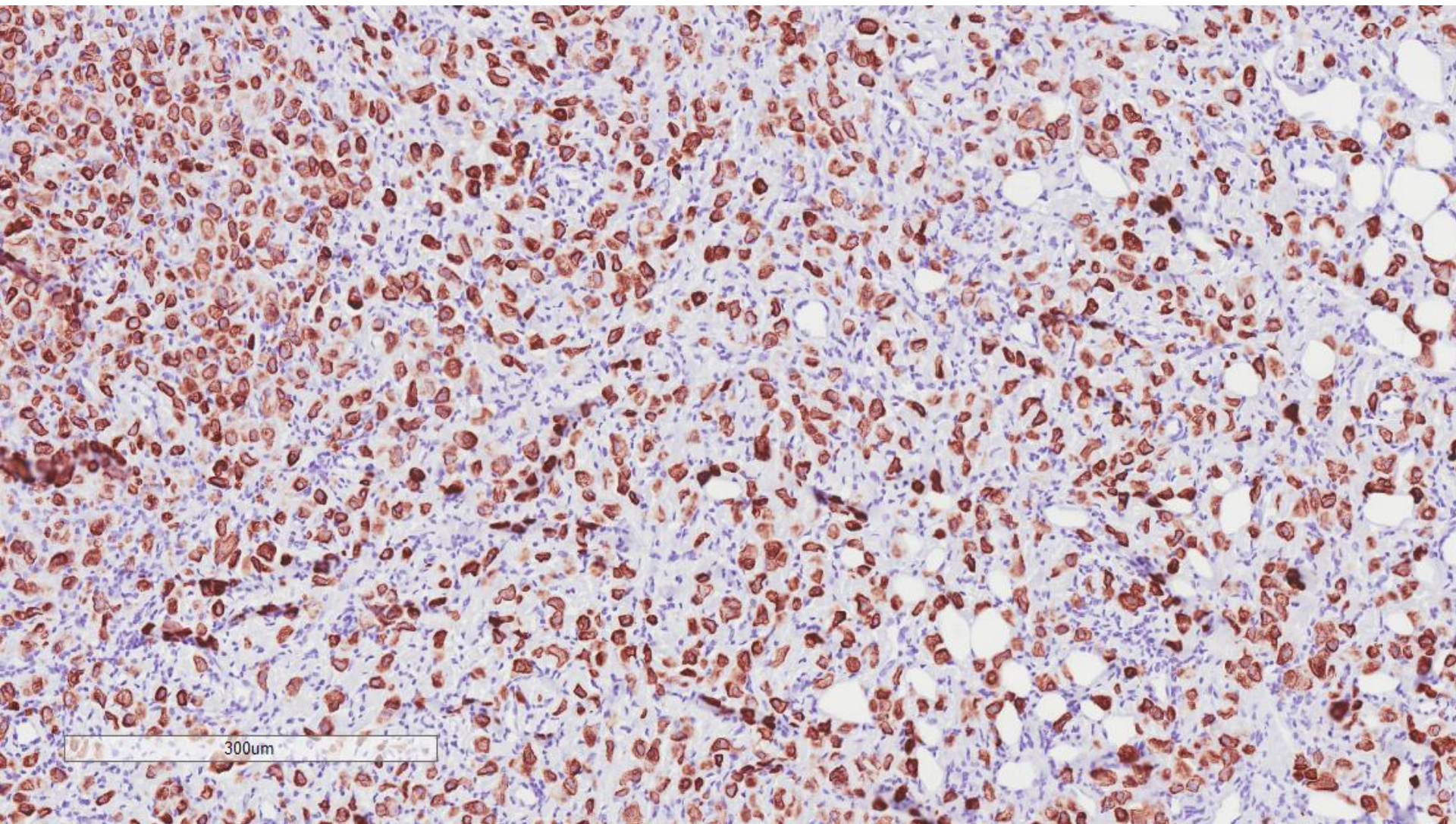
Axillary lymph node



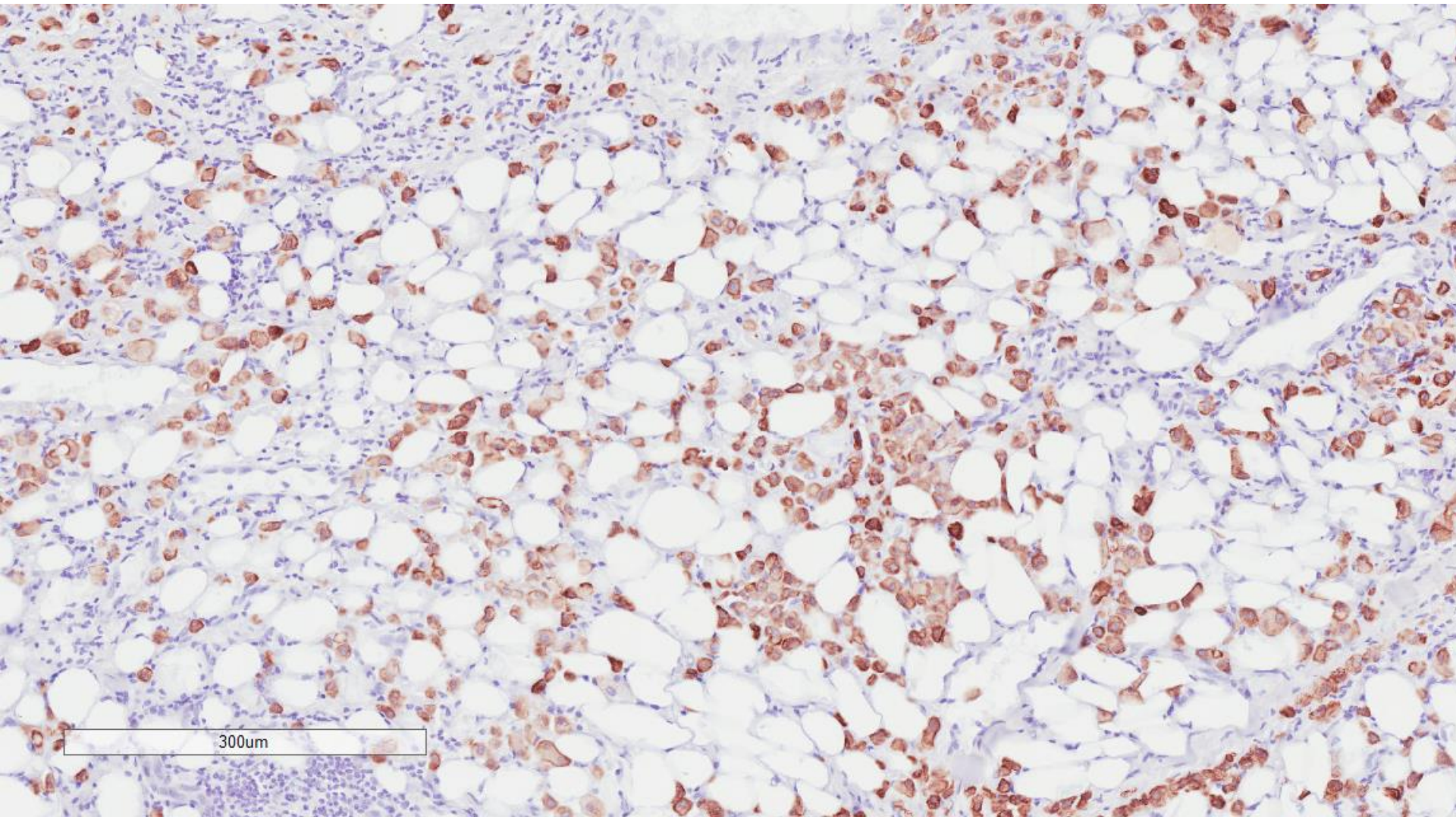
Axillary lymph node



Axillary lymph node: MNF116



Axillary lymph node: MNF116



Other immunohistochemical stains

- E-cadherin showed diminished staining in the lobular in situ and invasive components.
- E-cadherin showed positive membrane staining in the ductal (apocrine) in situ and invasive components.

Invasive mixed ductal and lobular carcinoma with apocrine features, ER negative, PR negative, cerbB2 borderline (FISH not amplified); metastases to axillary lymph nodes