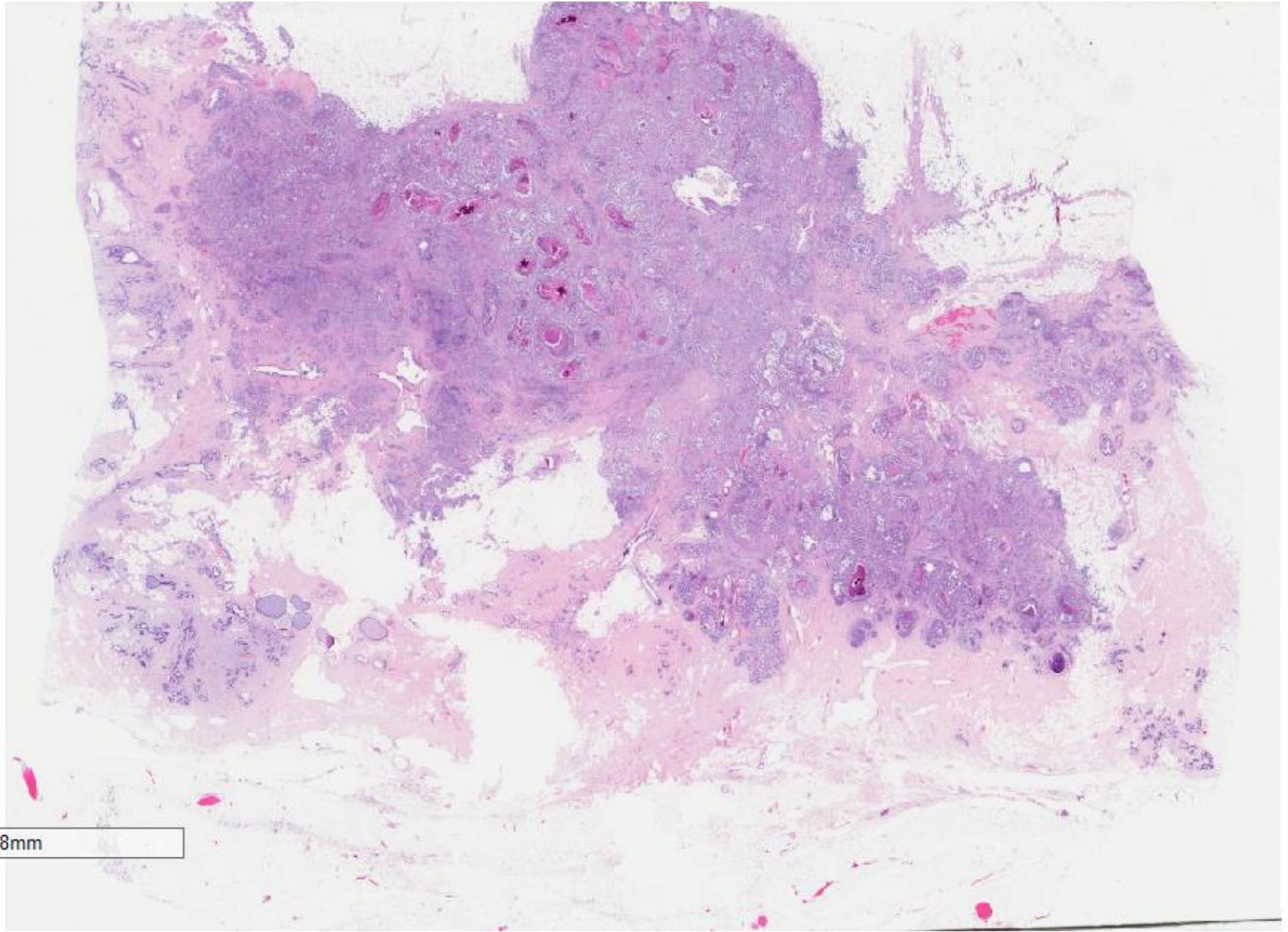
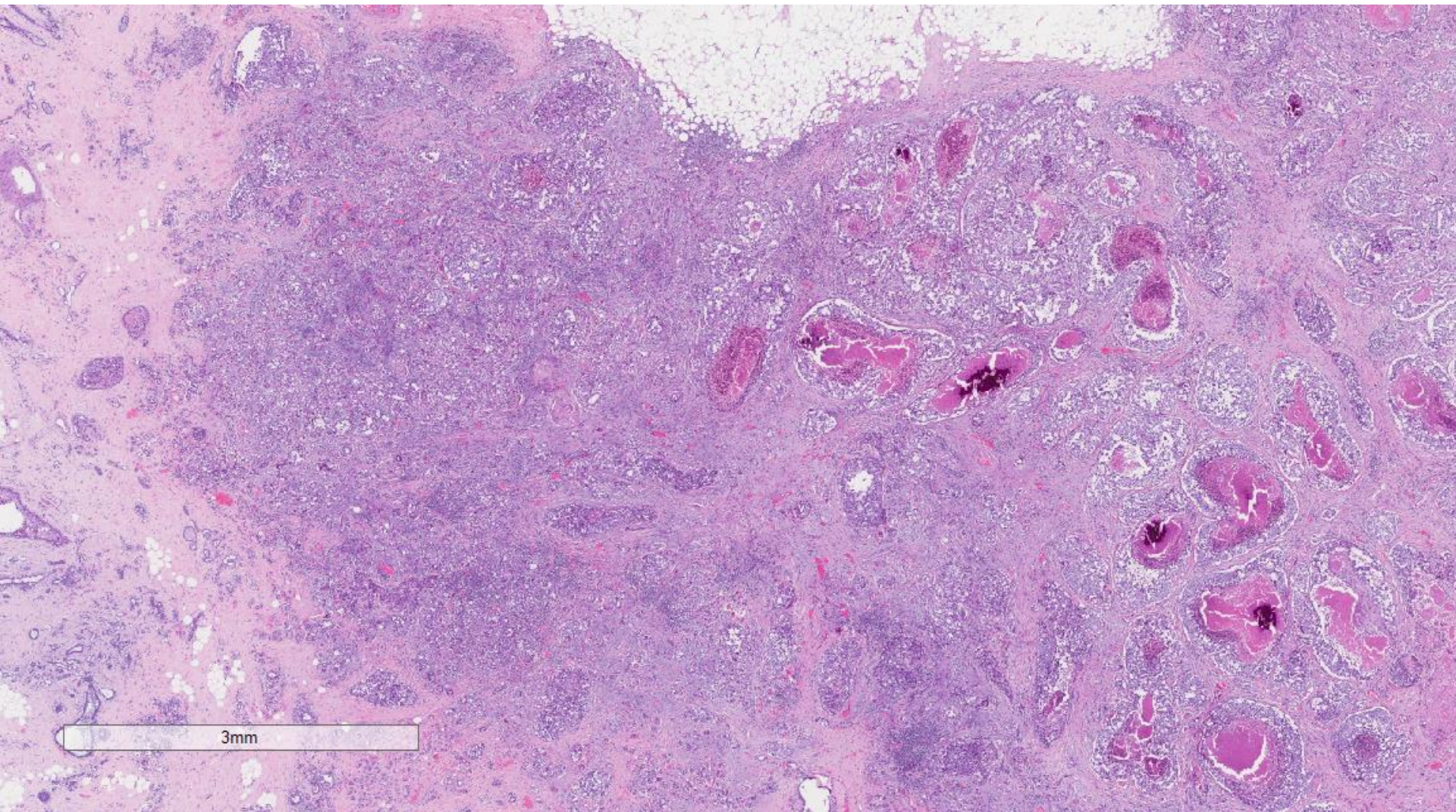


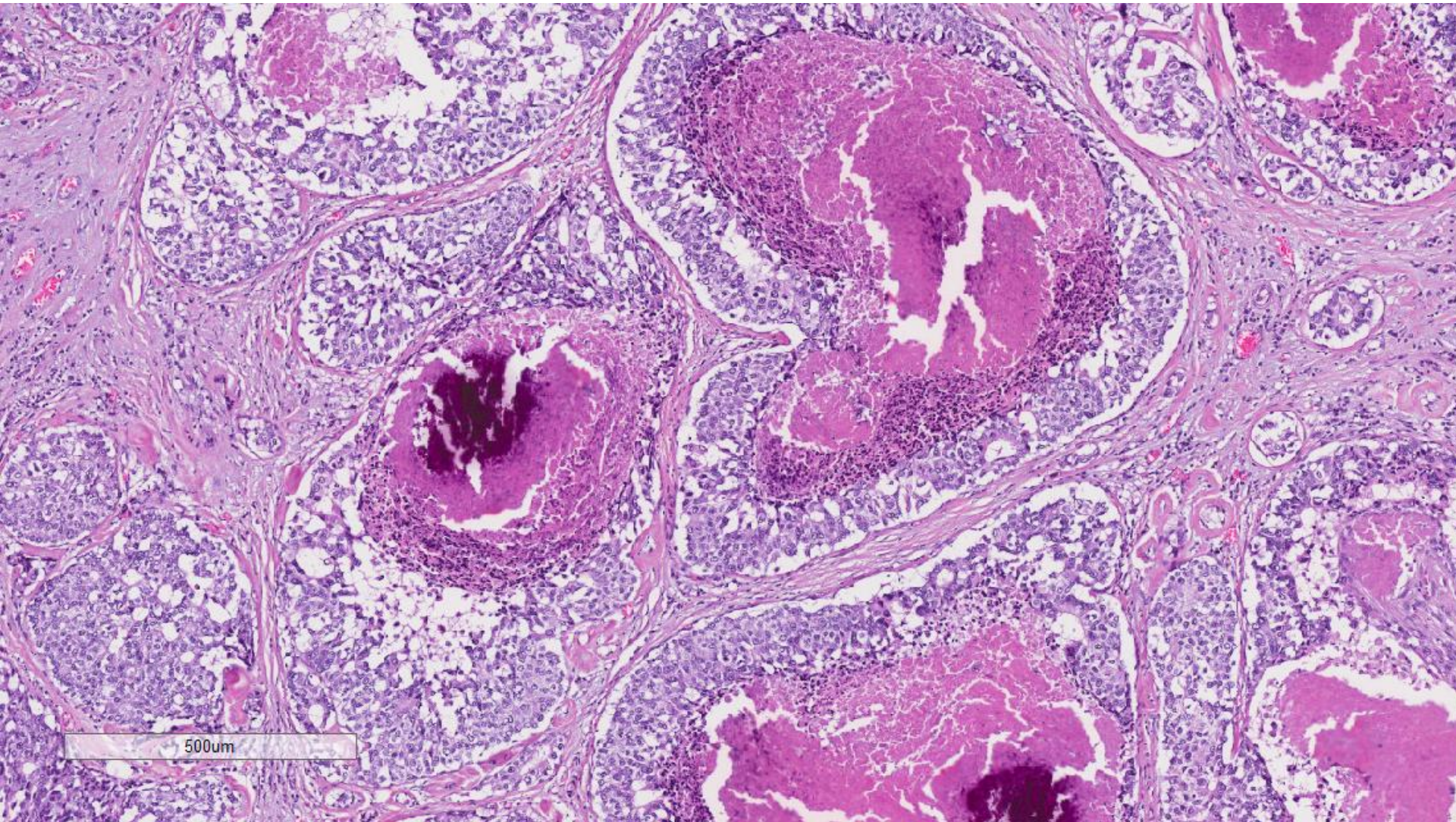
Case 29

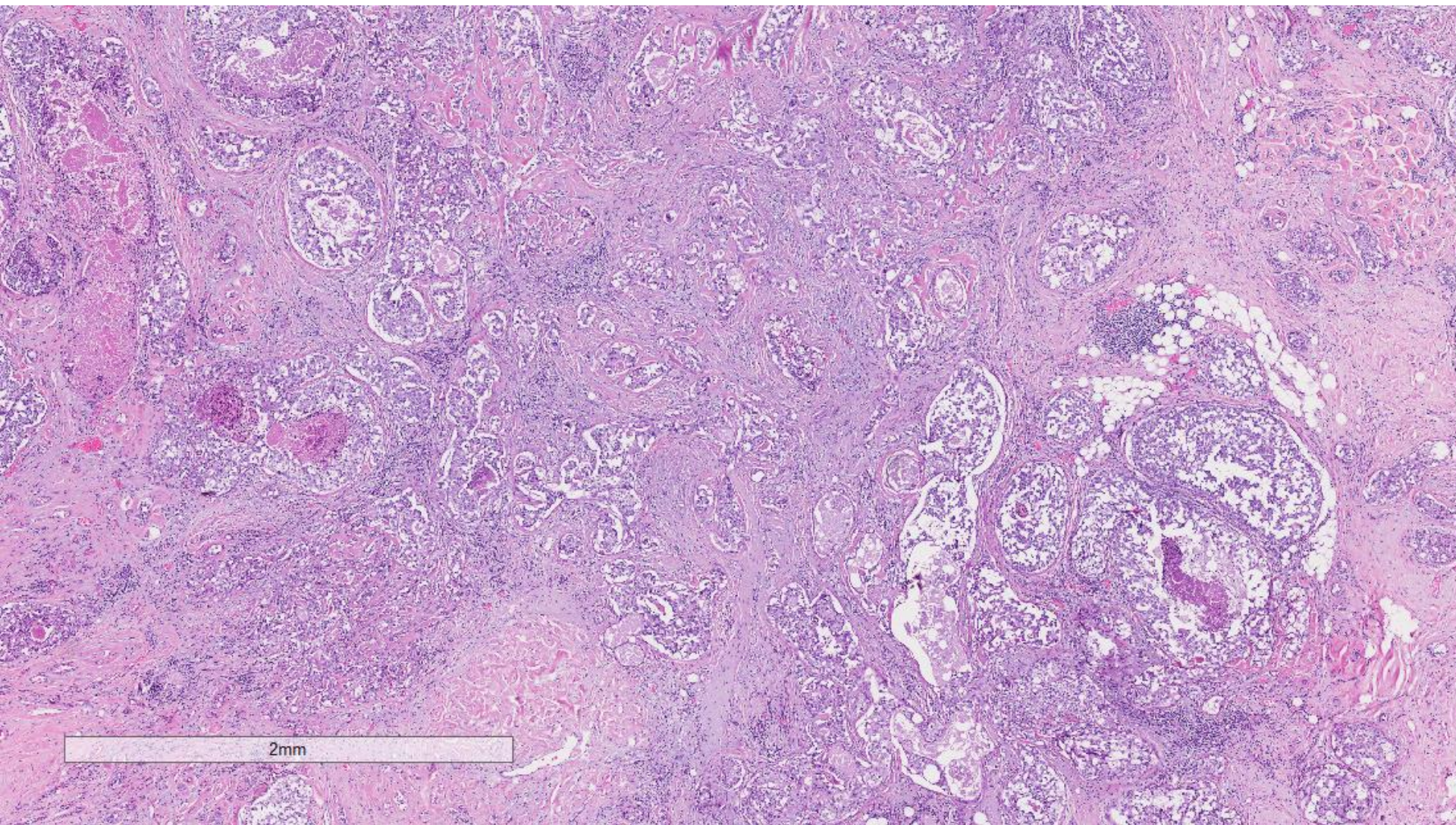
50 year old lady underwent resection of
a right breast mass.

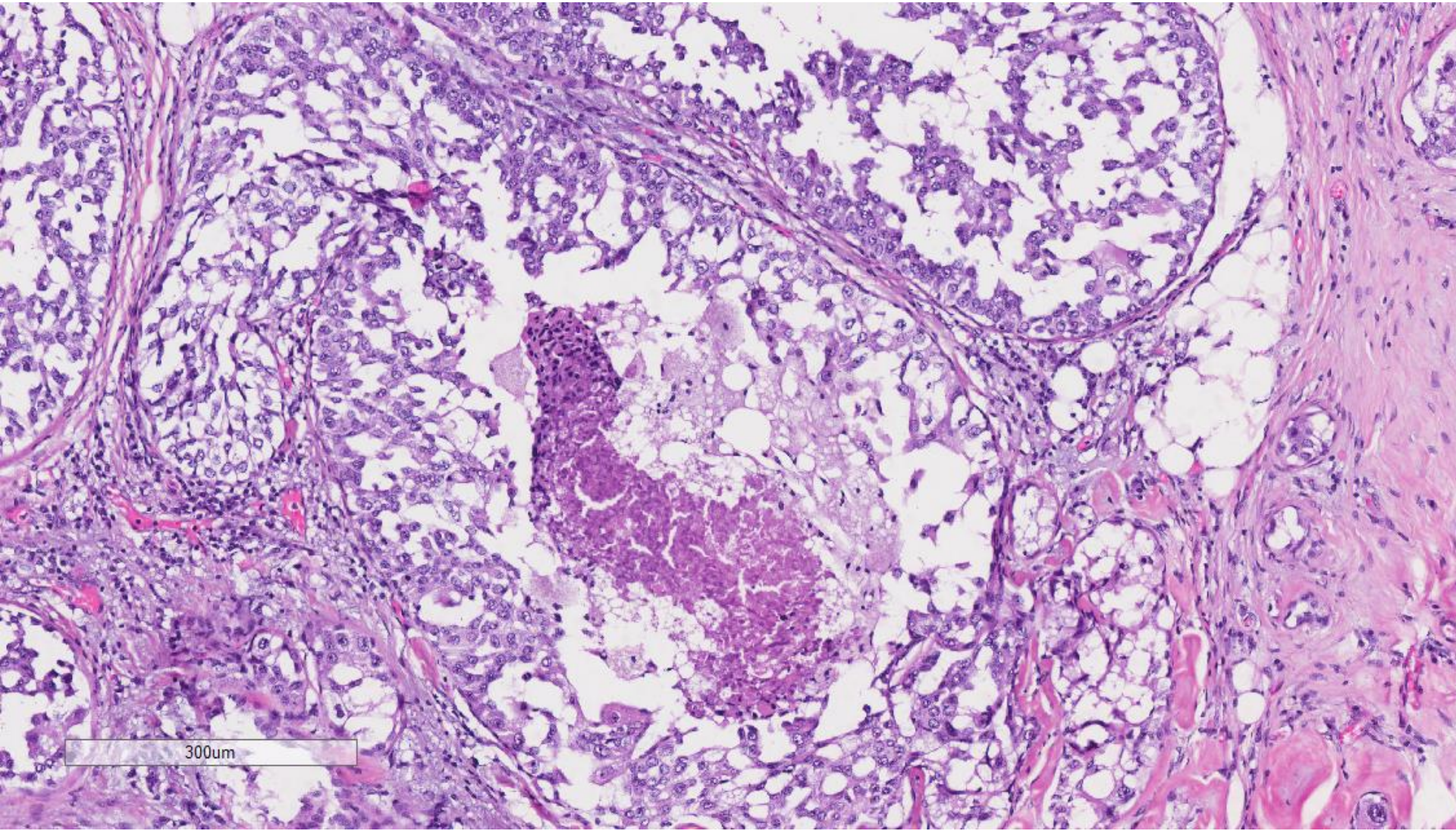


8mm

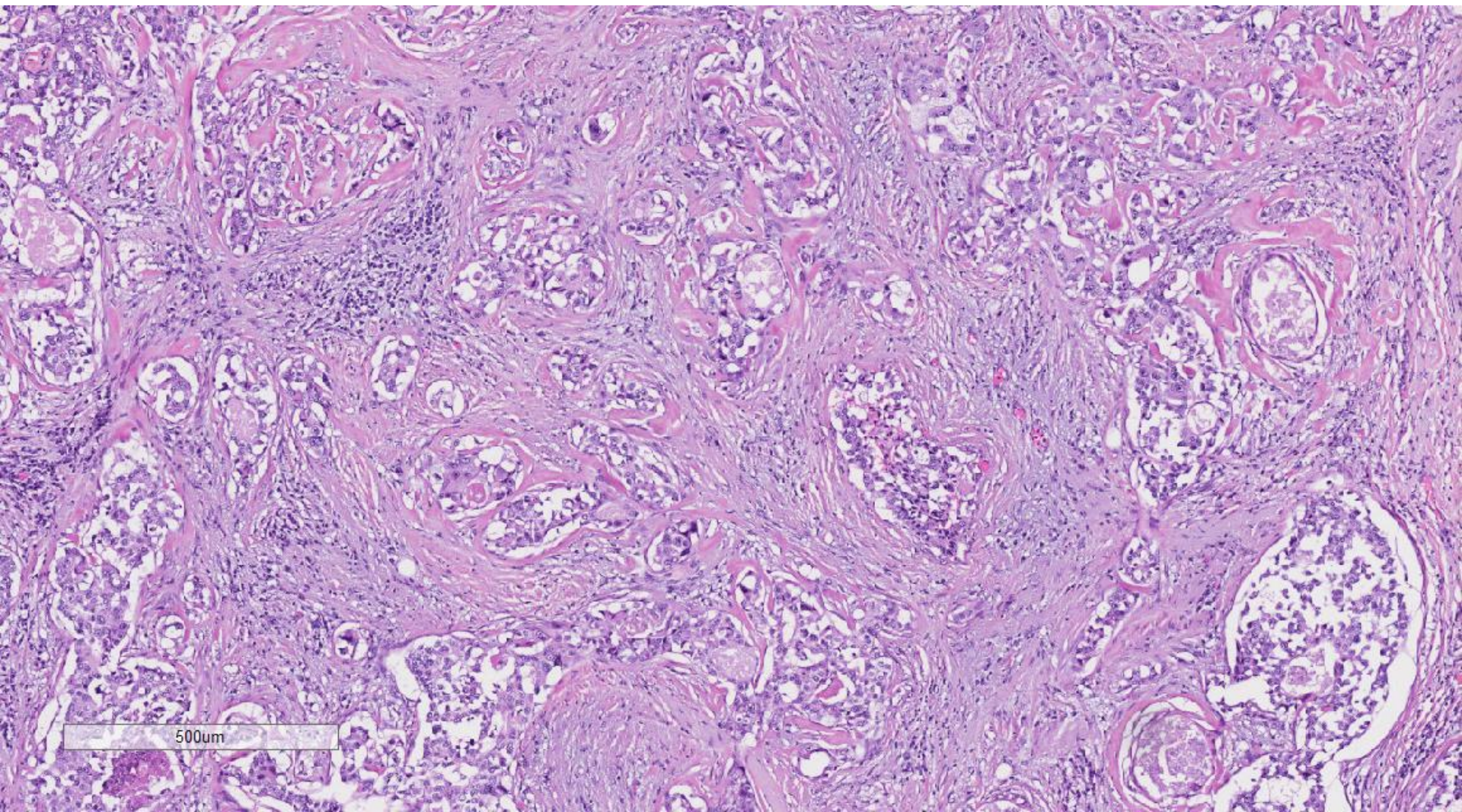


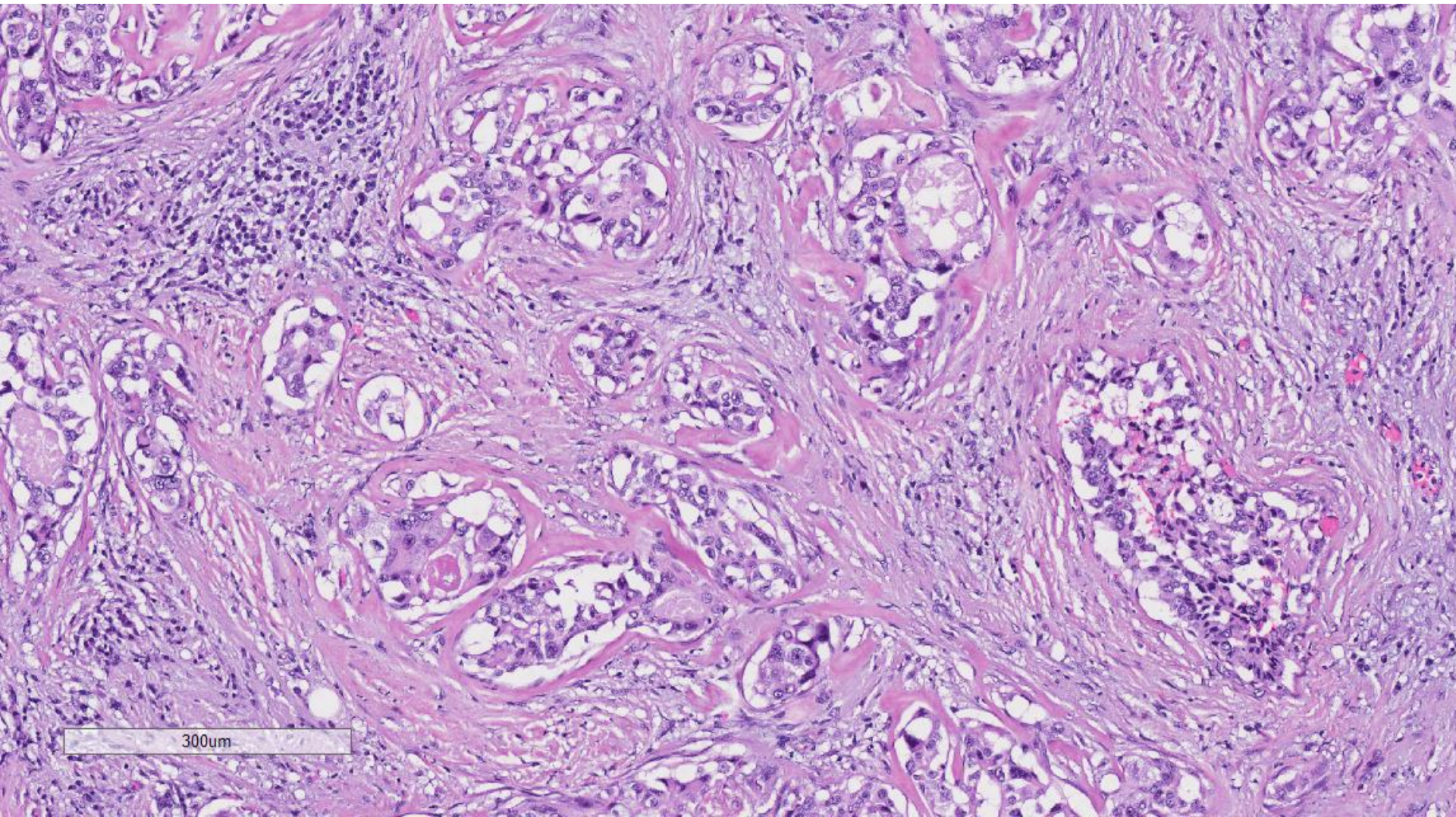


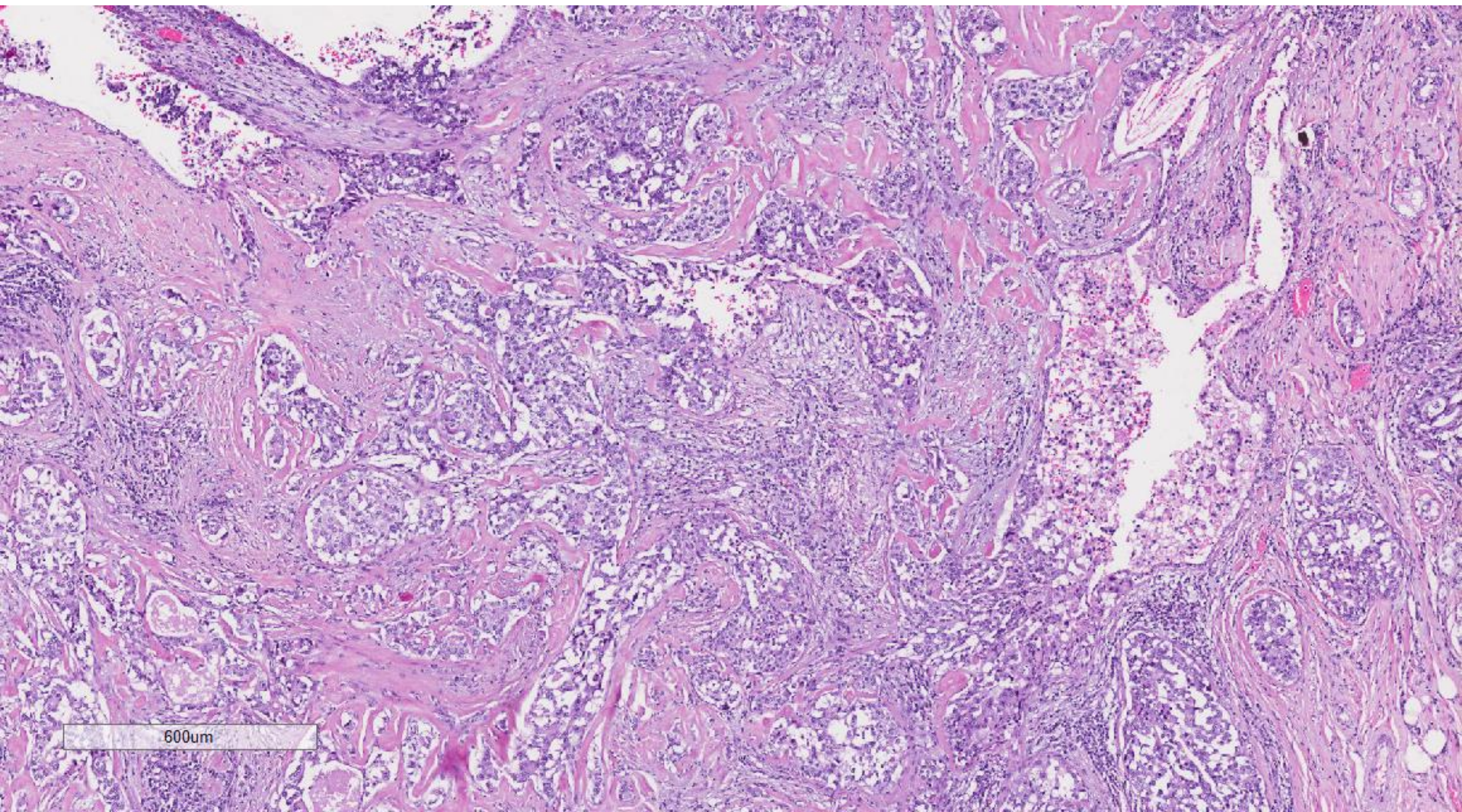




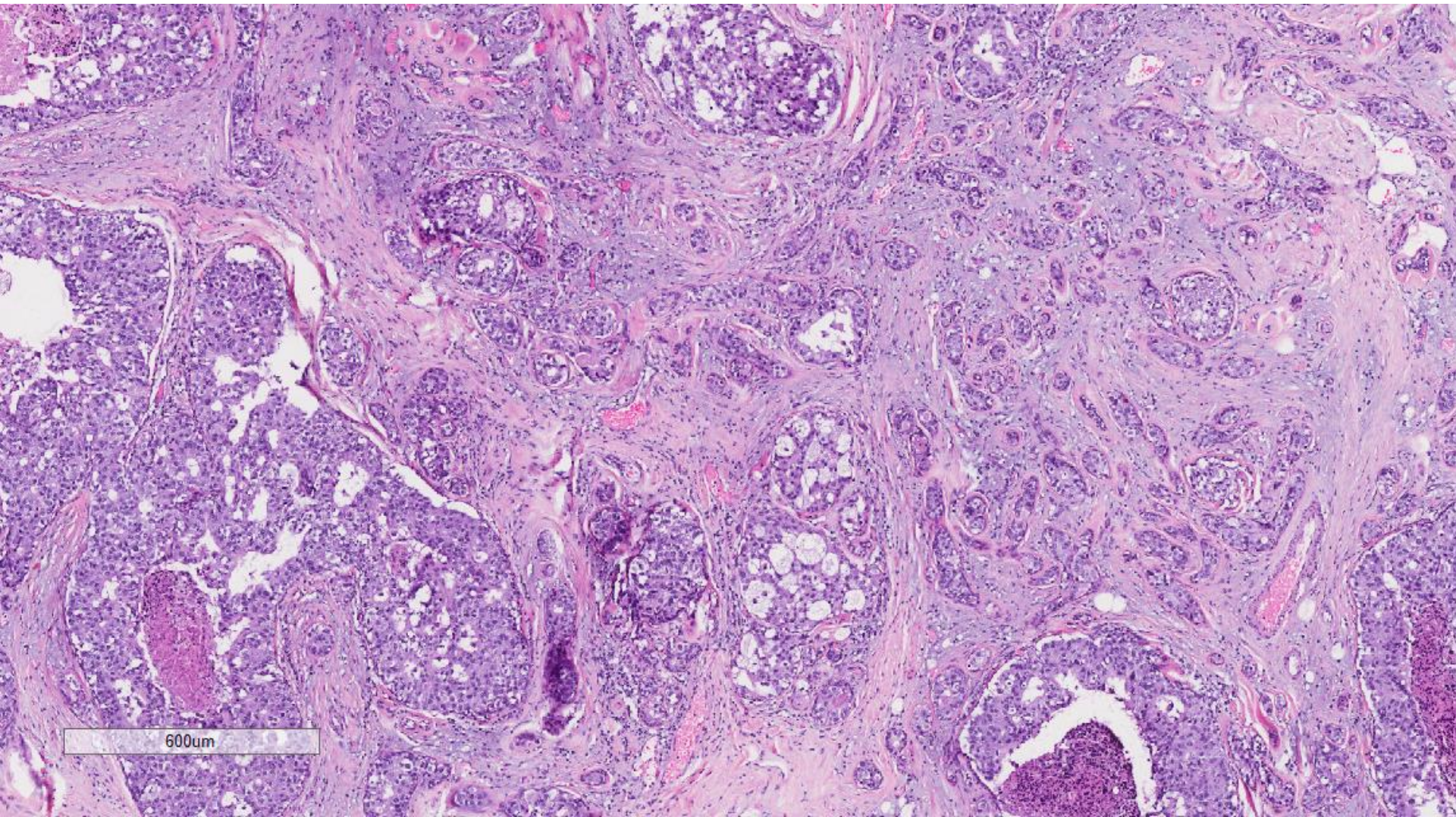
300um



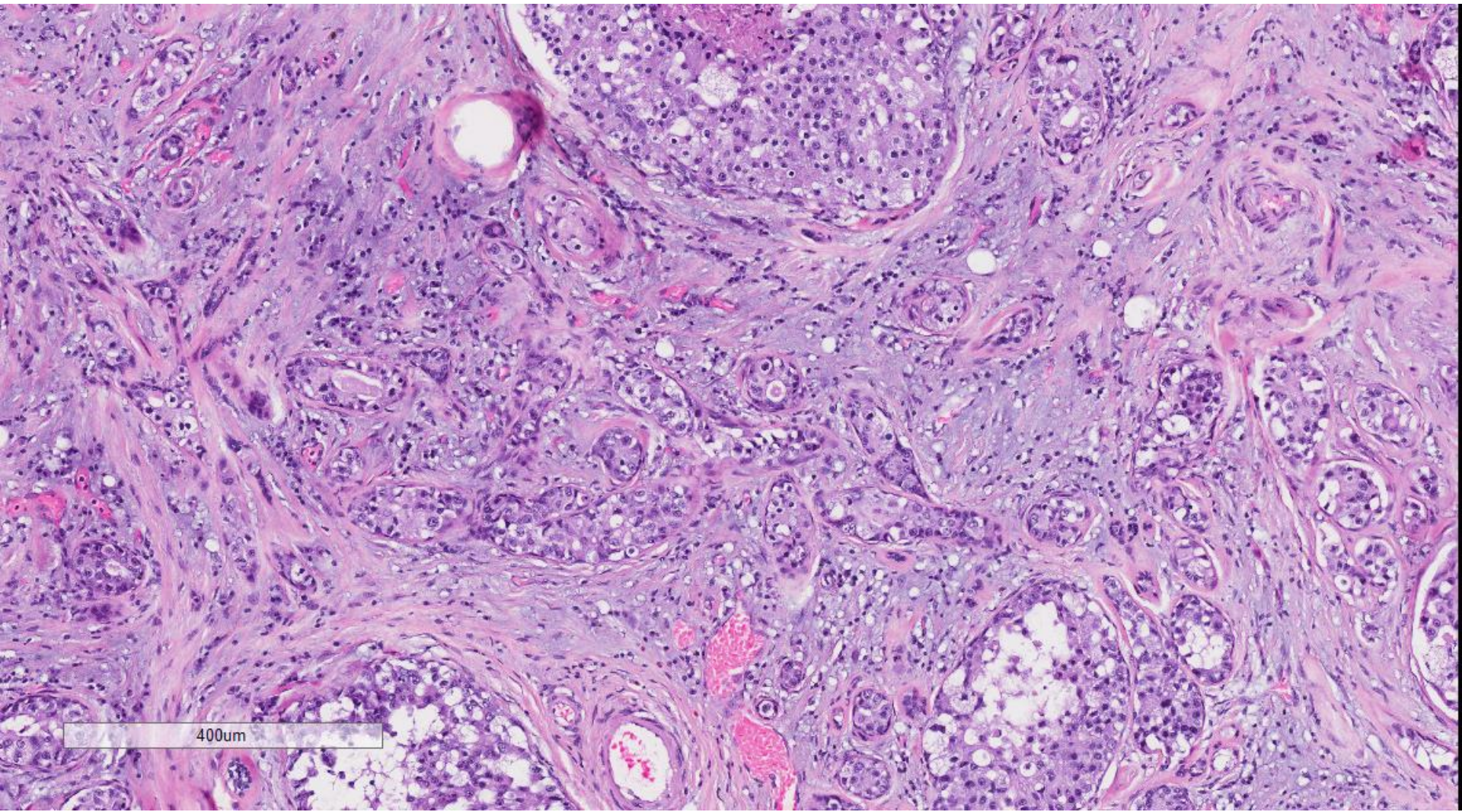


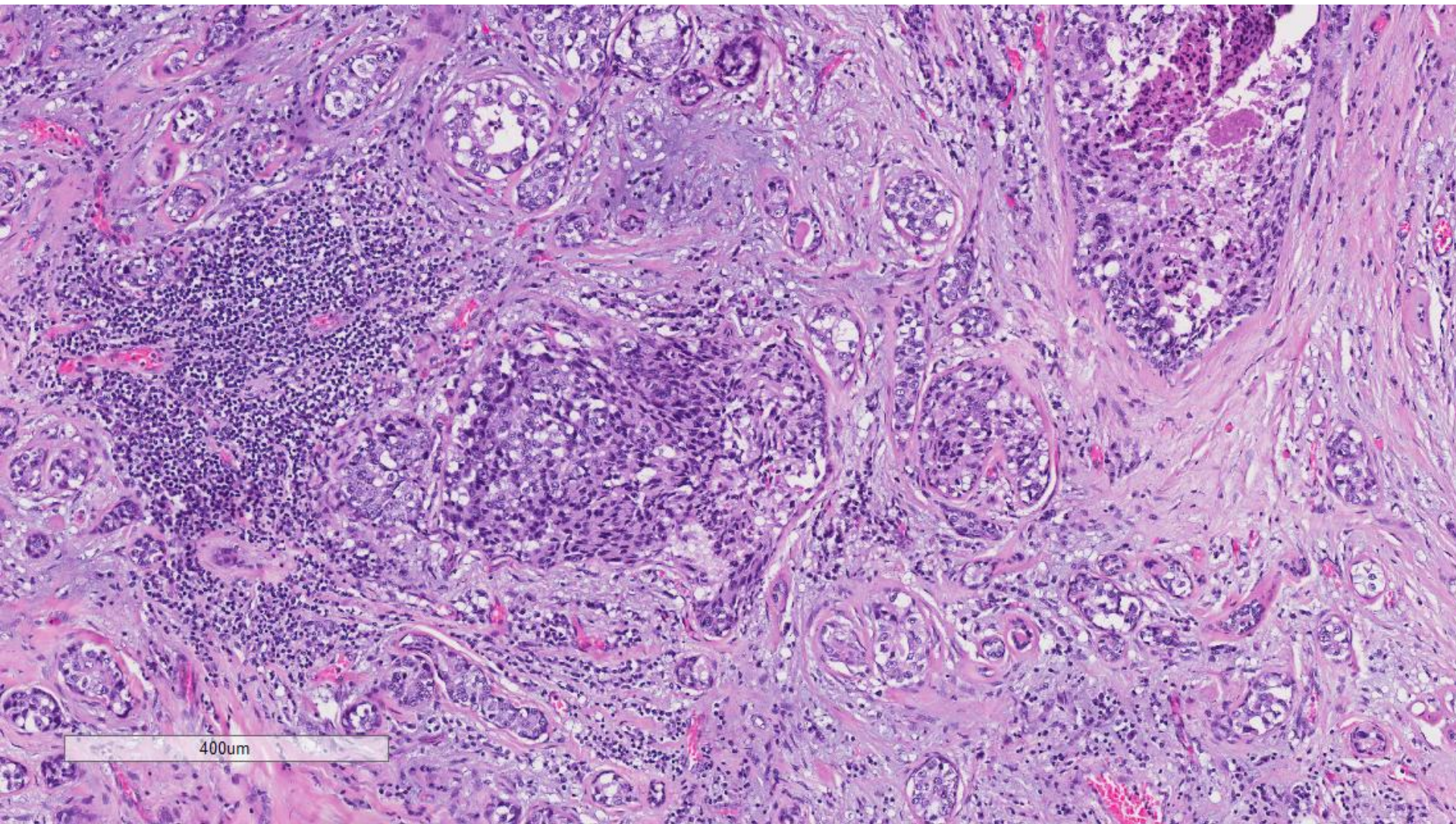


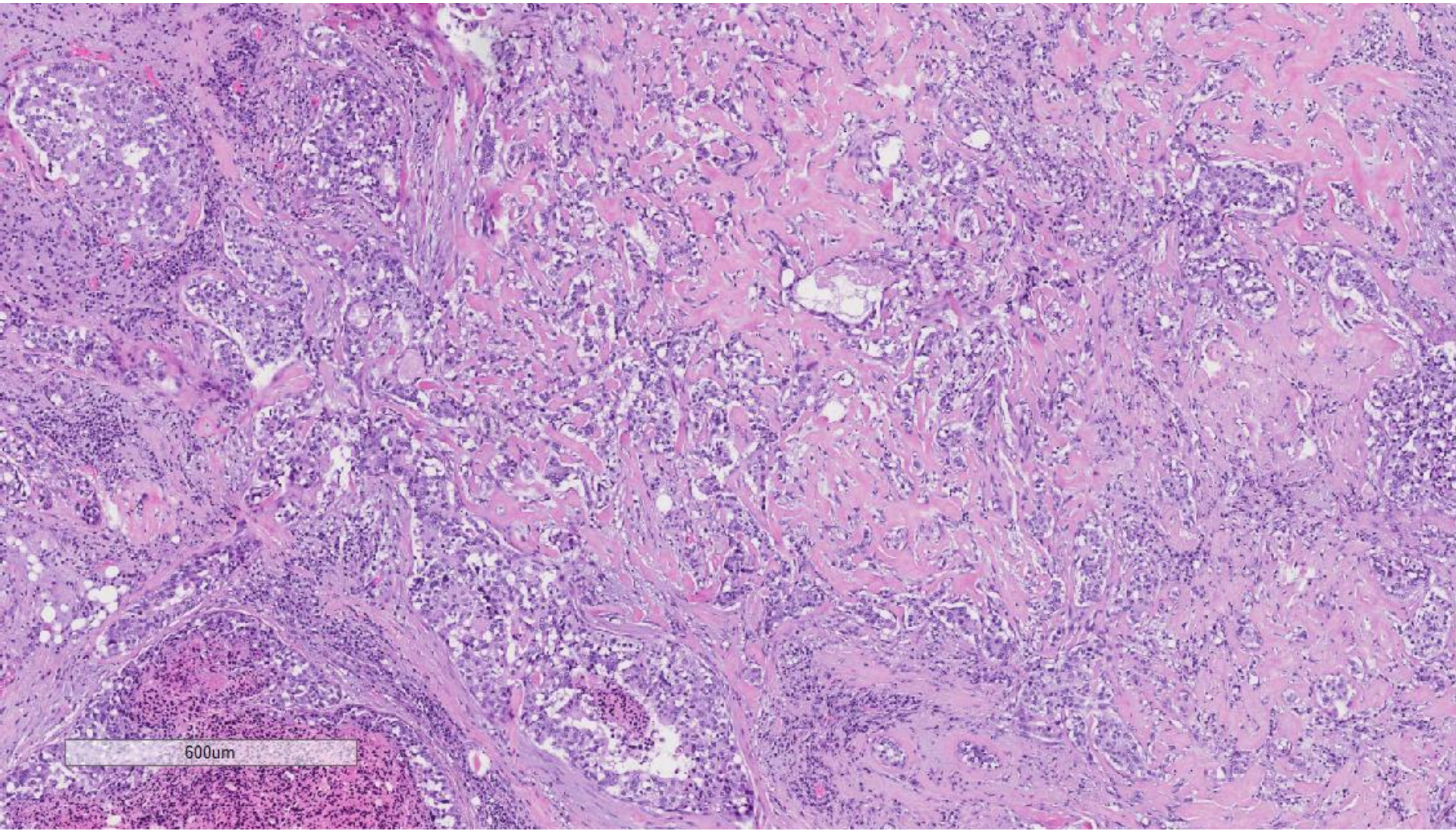
600um



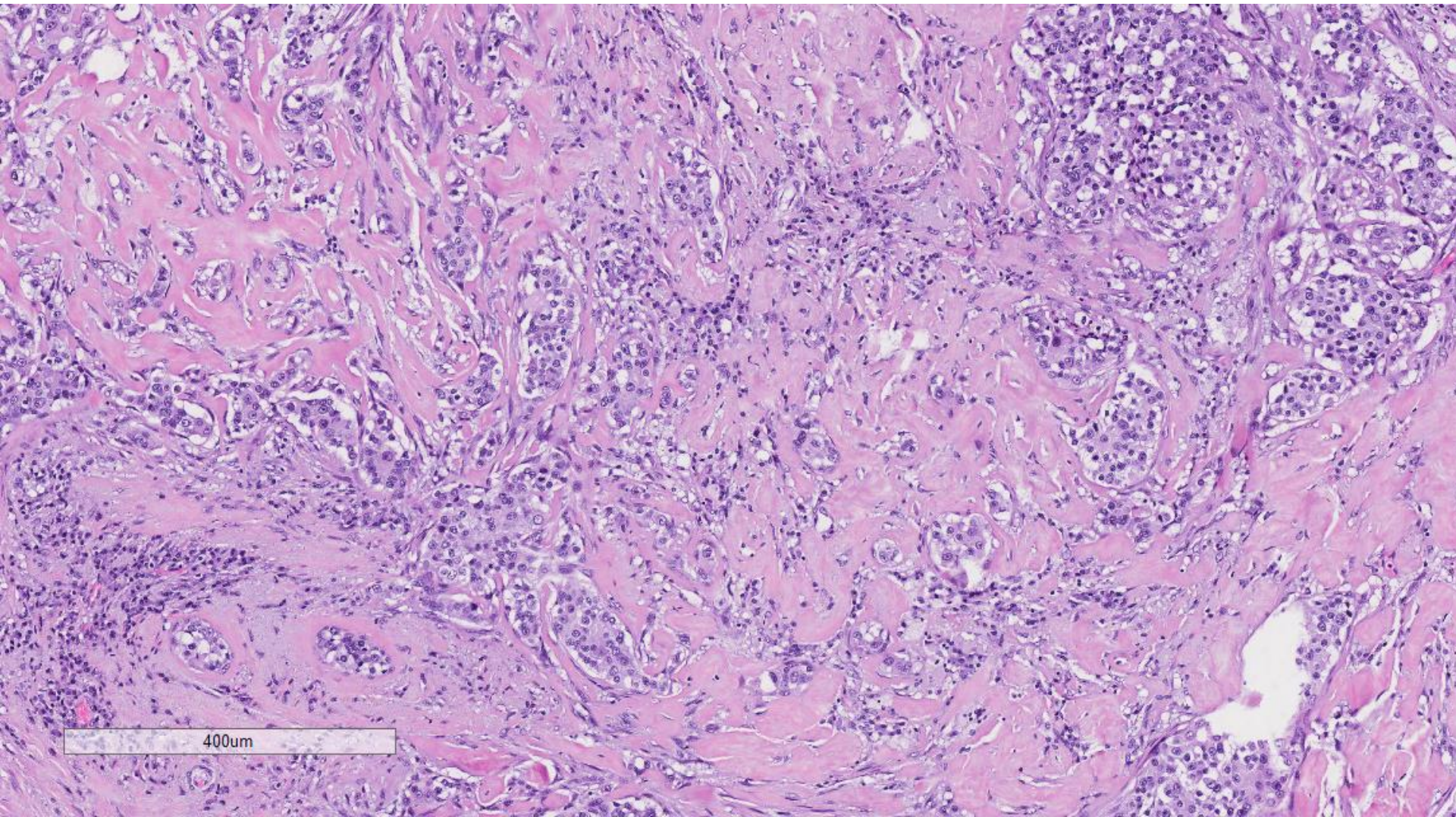
600um



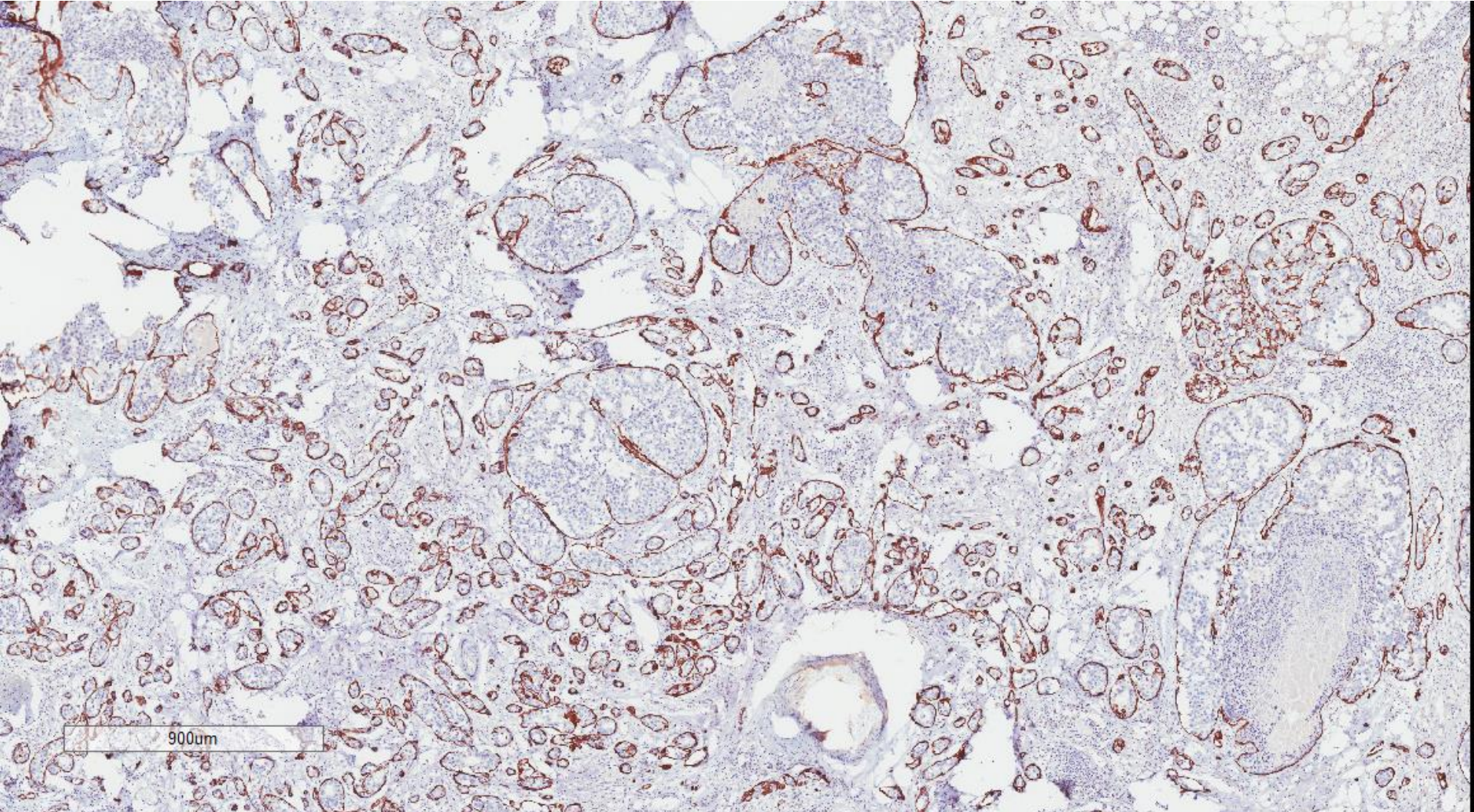




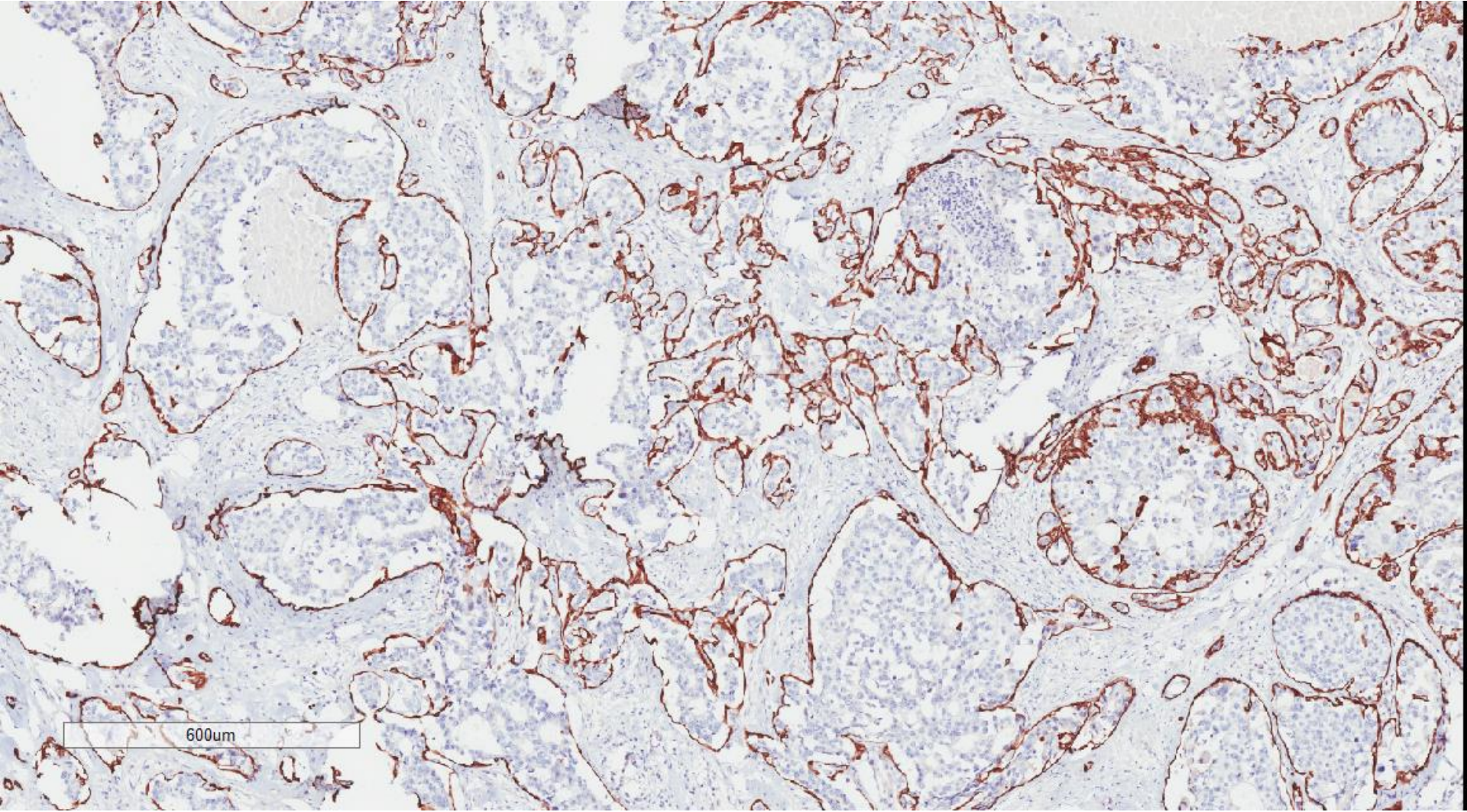
600µm



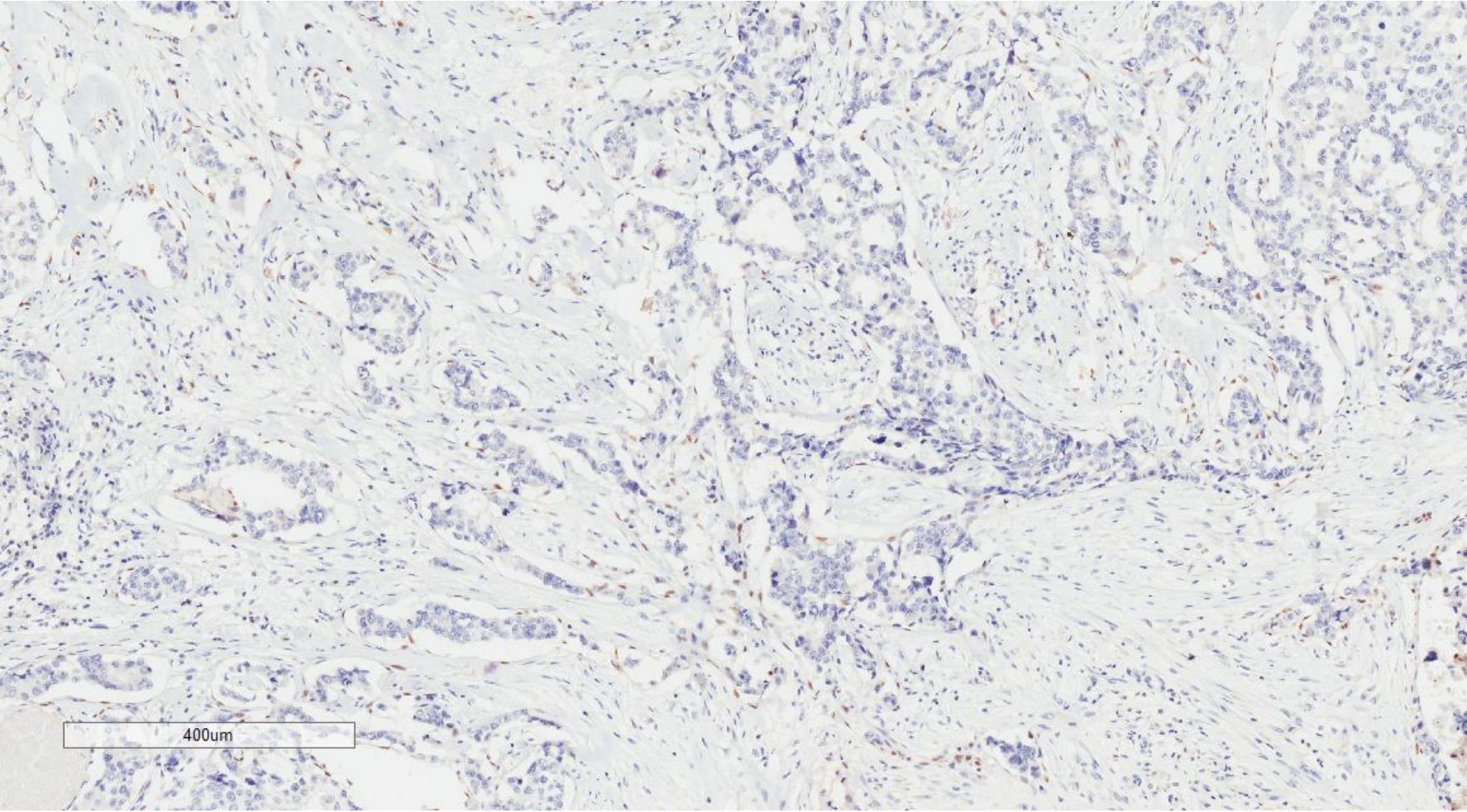
CK14



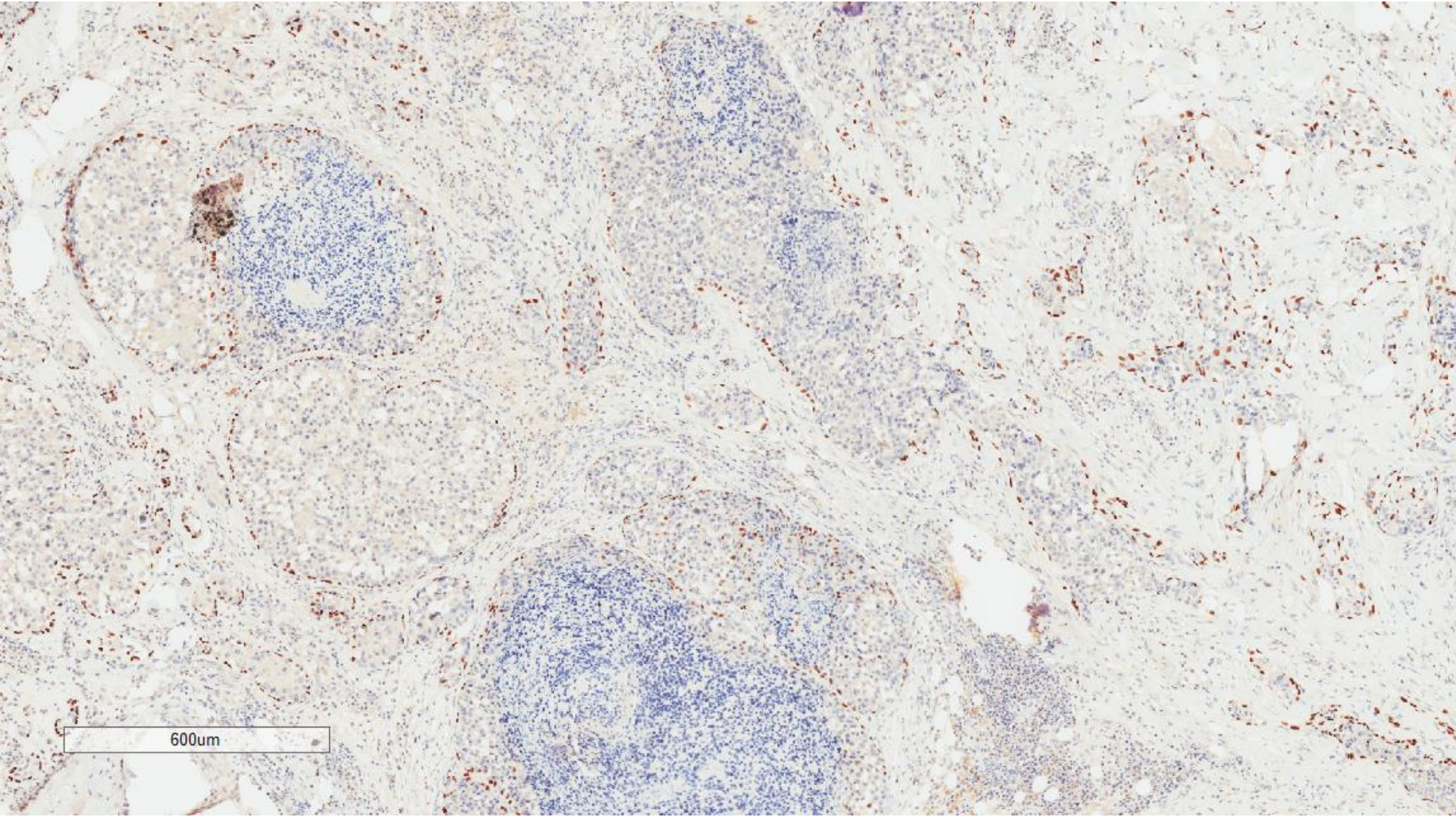
CK14



p63



p63



Right breast, simple mastectomy:

Extensive ductal carcinoma in situ, high nuclear grade with necrosis and calcifications;
Small focus of invasive ductal carcinoma (not shown)