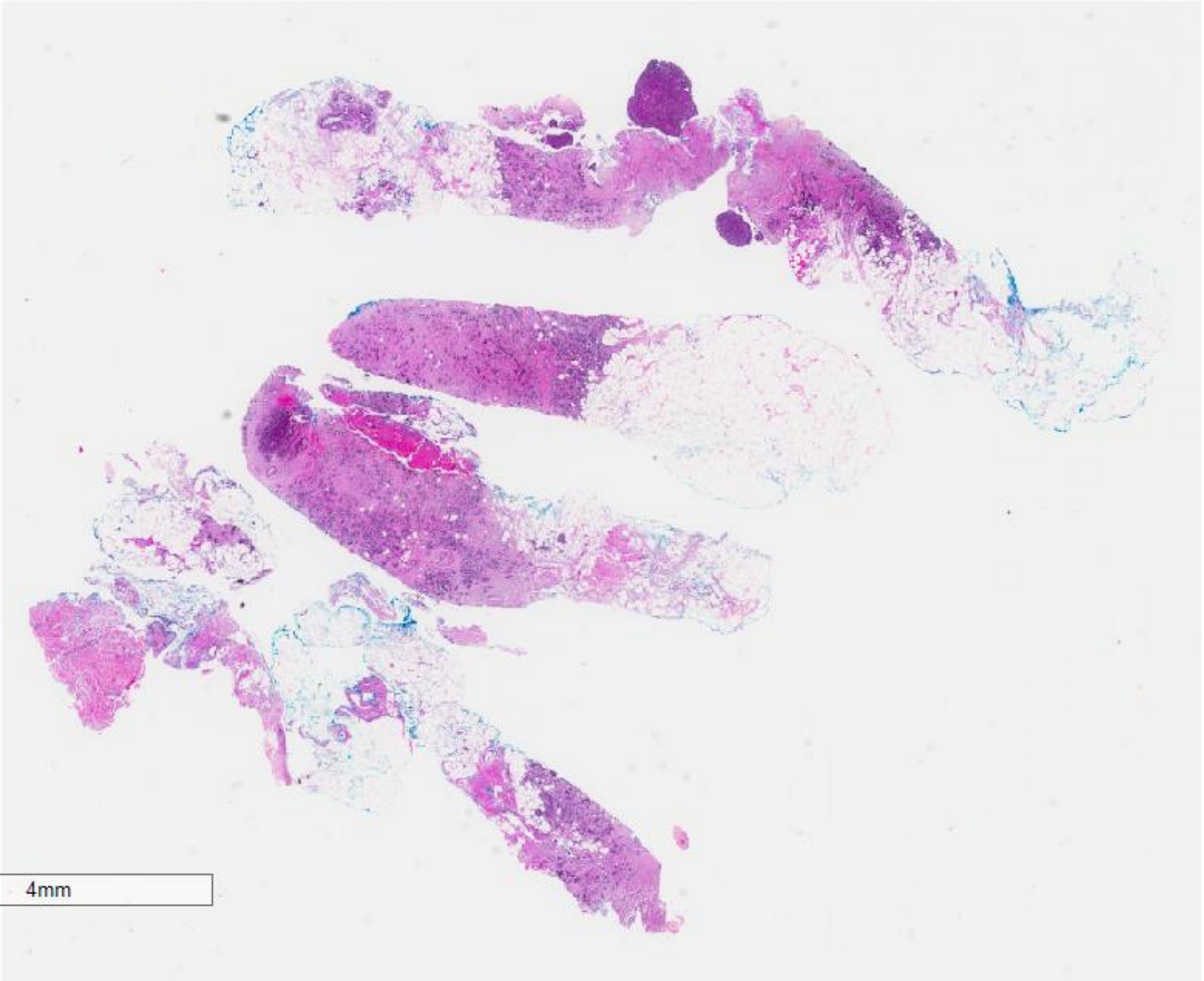


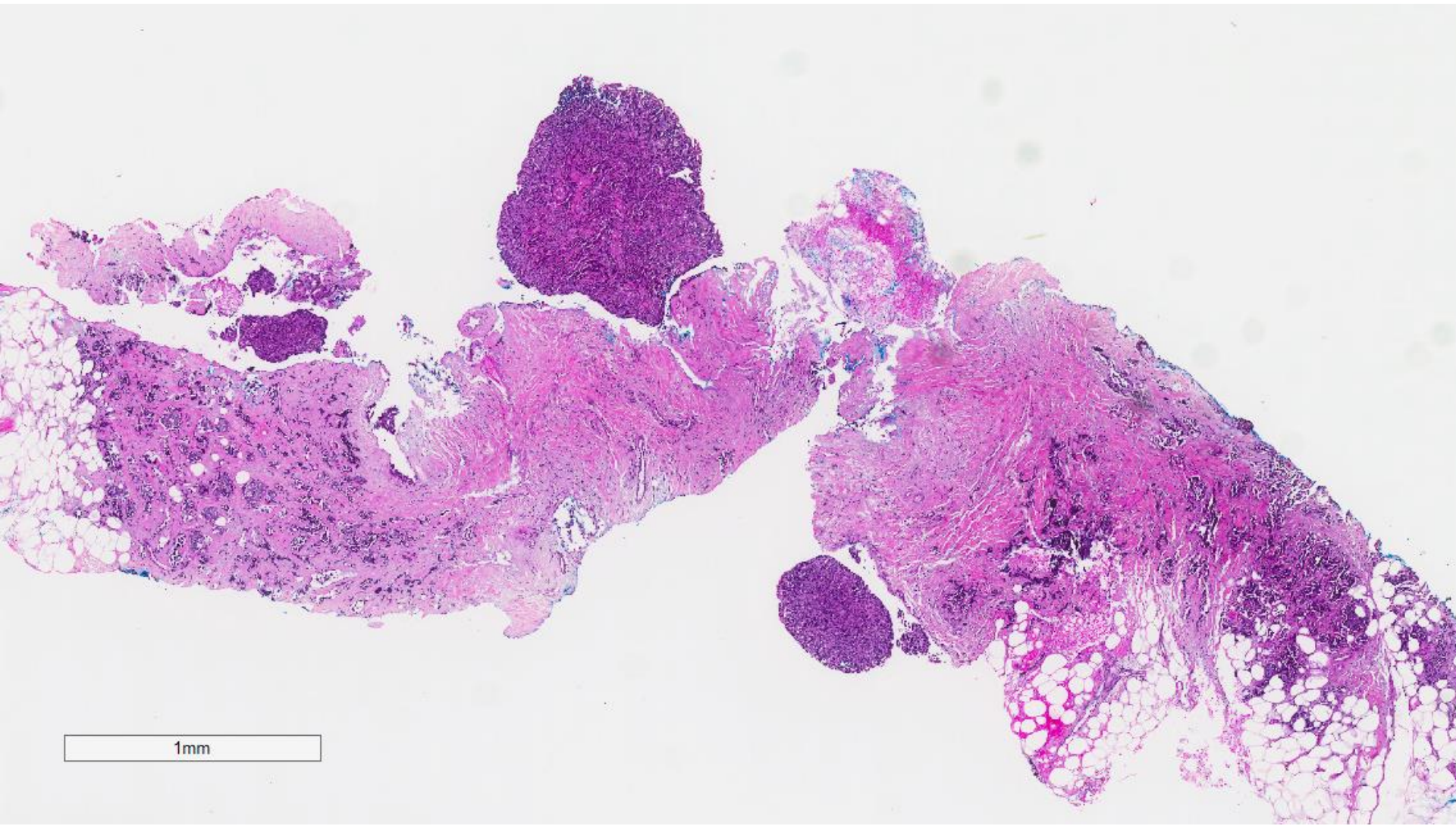
Case 20

61 year old lady presented with a right breast mass.

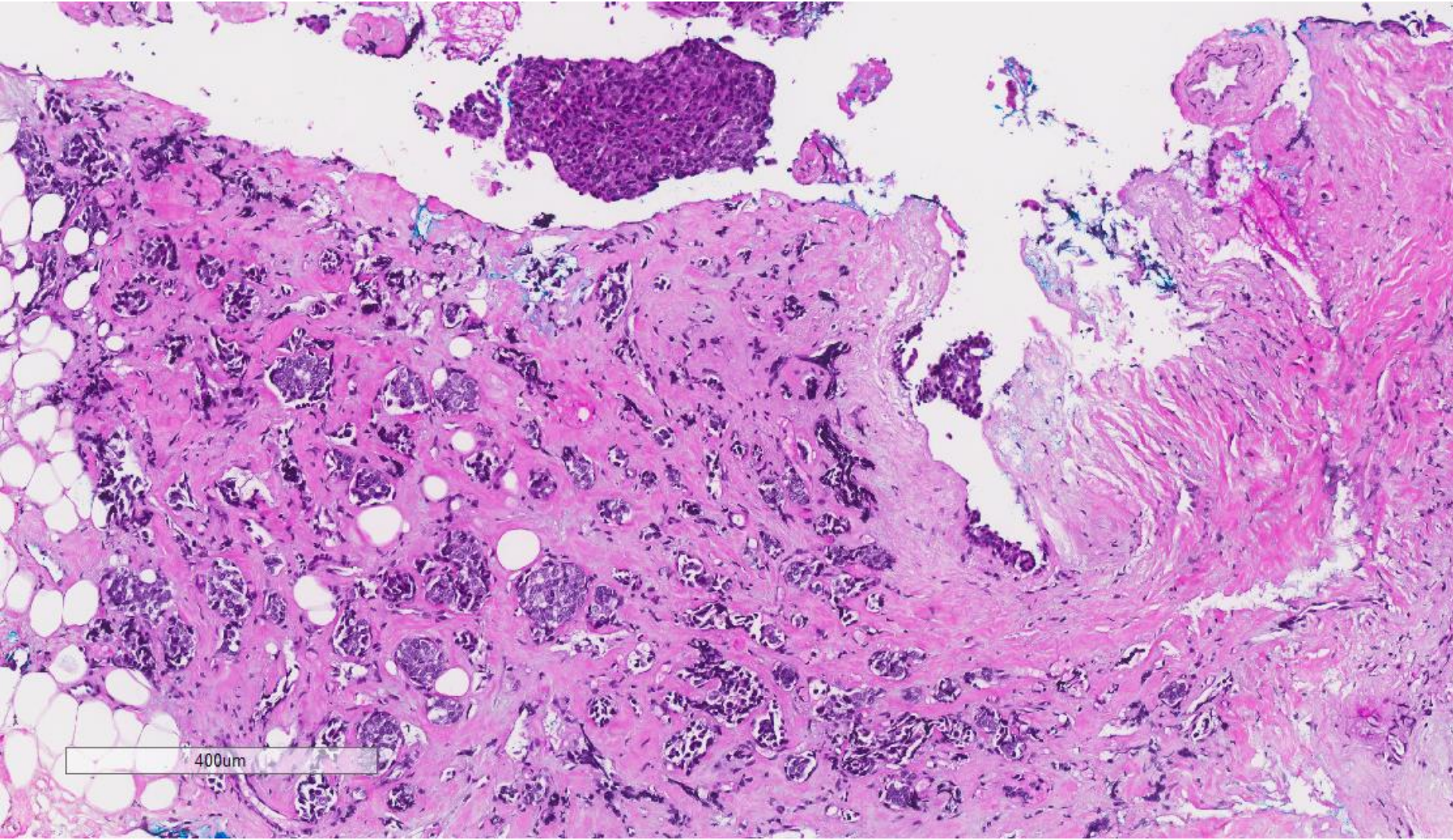
An ultrasound guided trucut biopsy was performed.



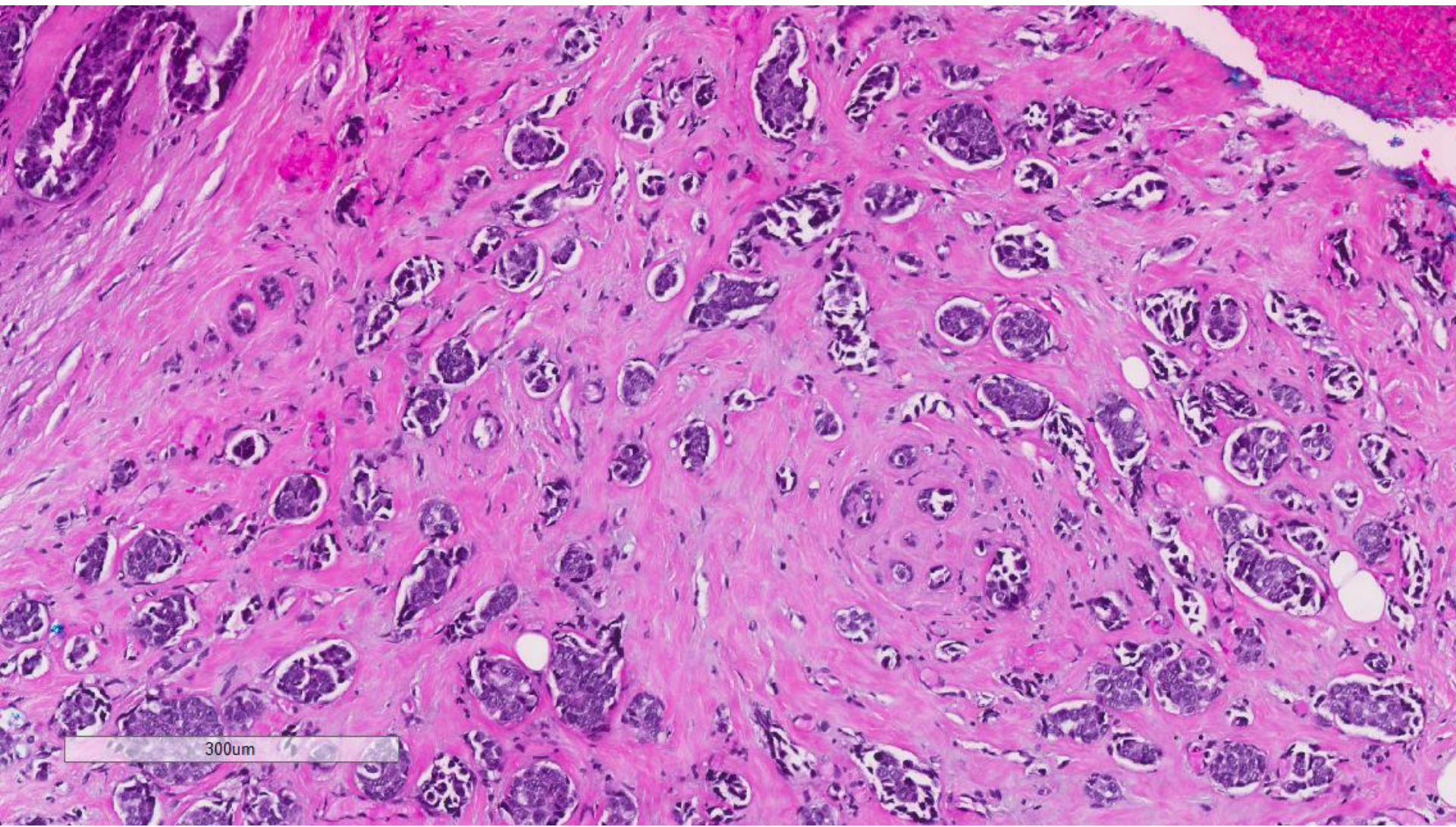
4mm

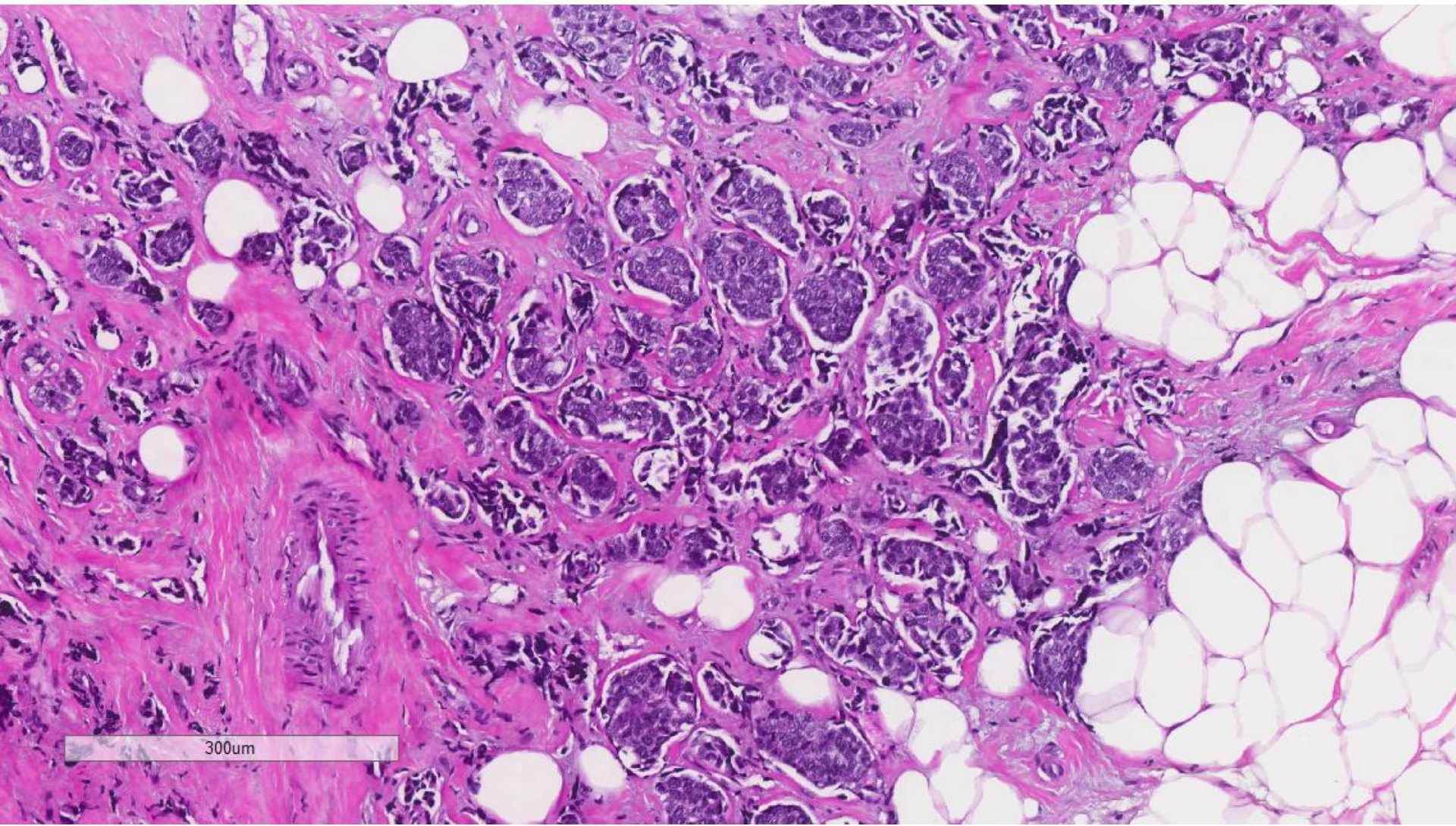


1mm

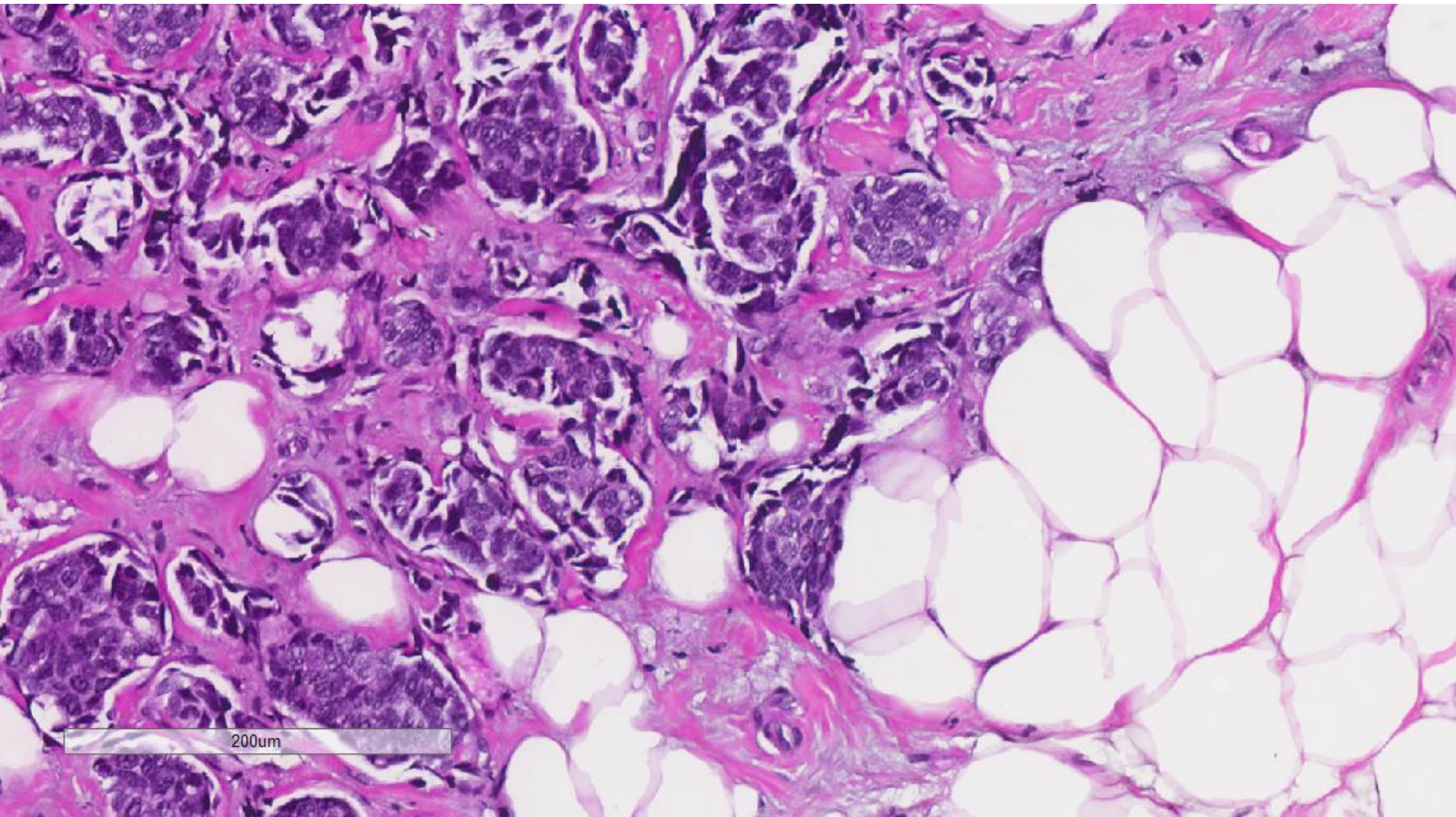


400um



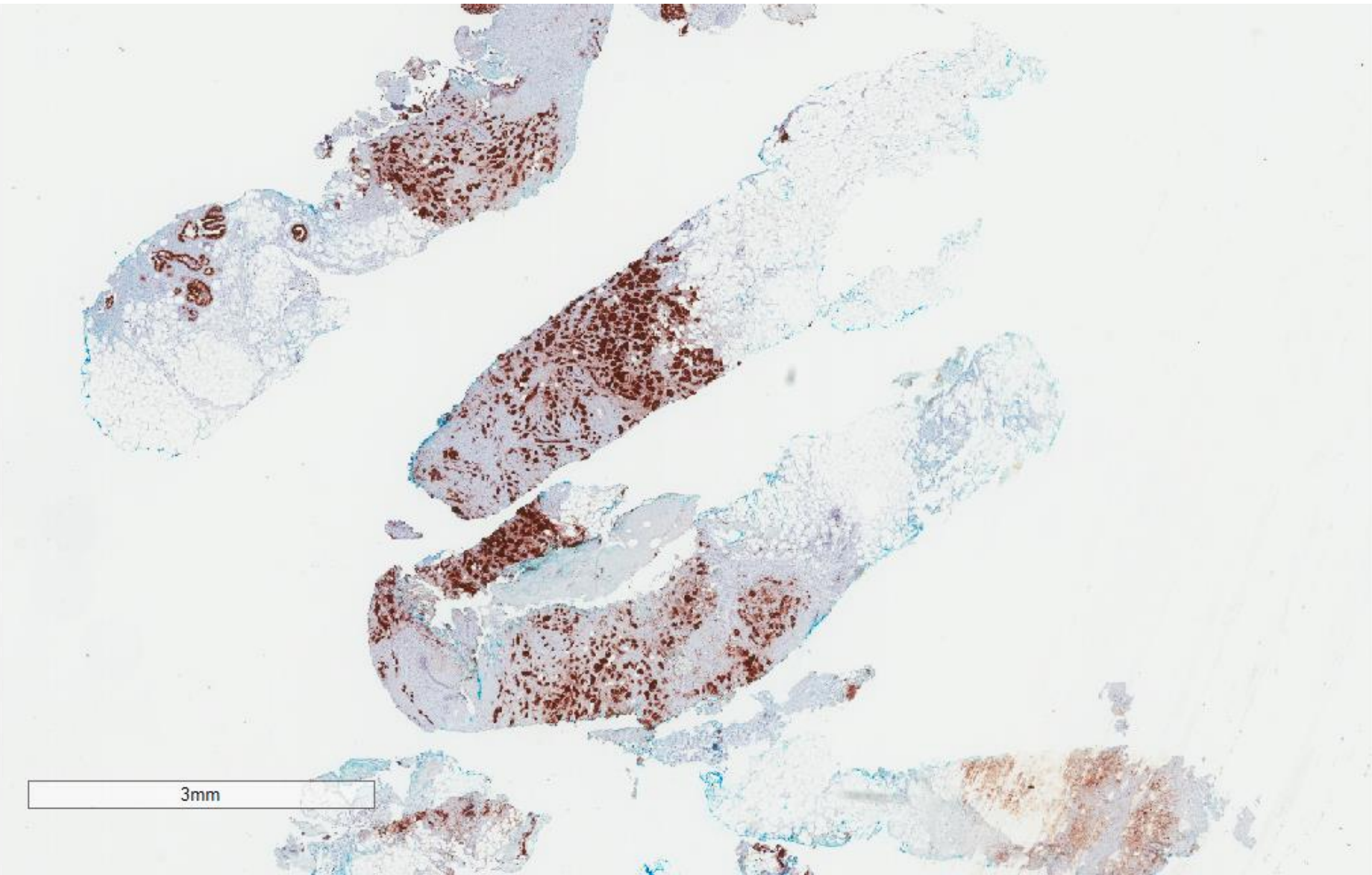


300um

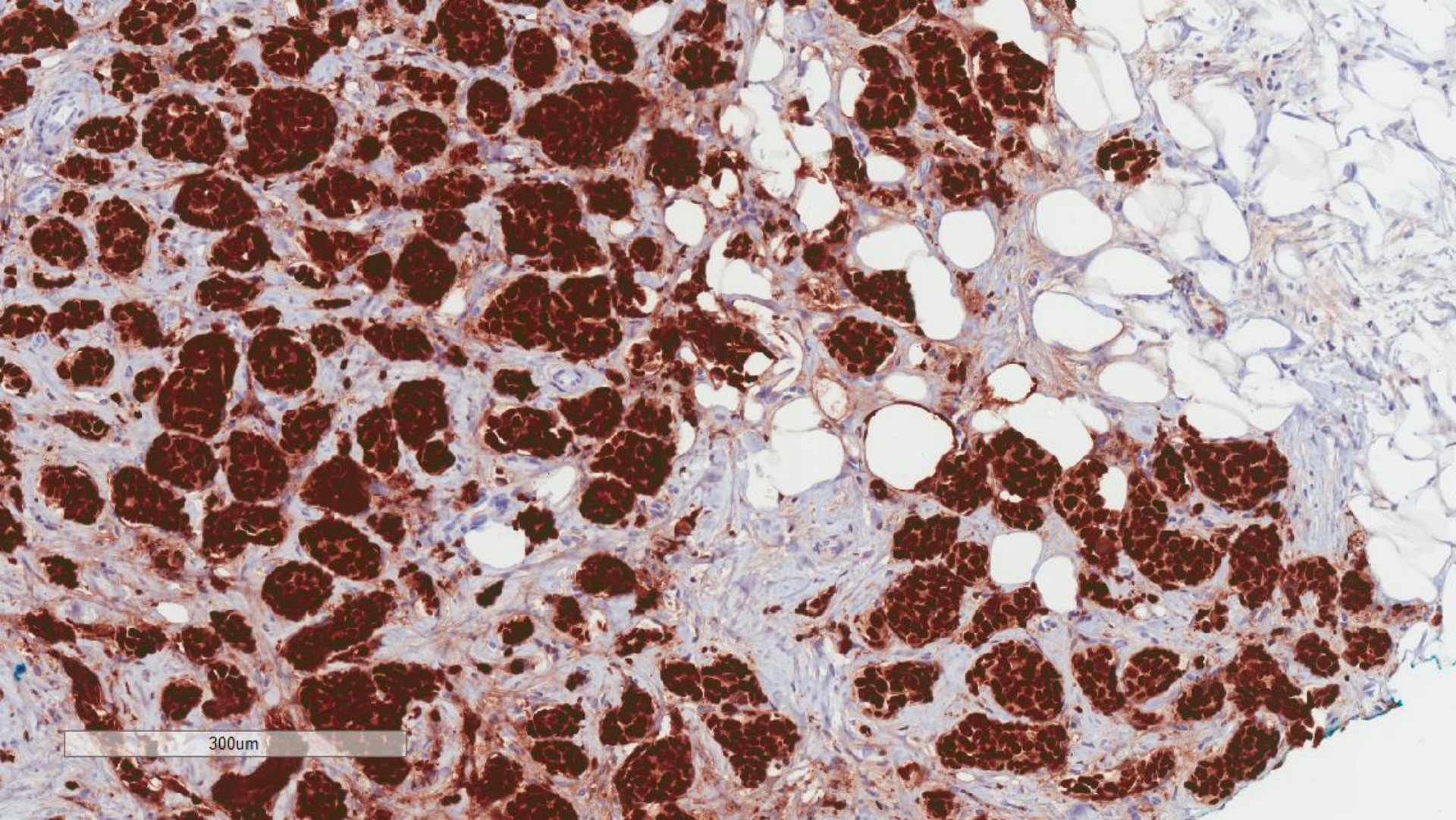


200um

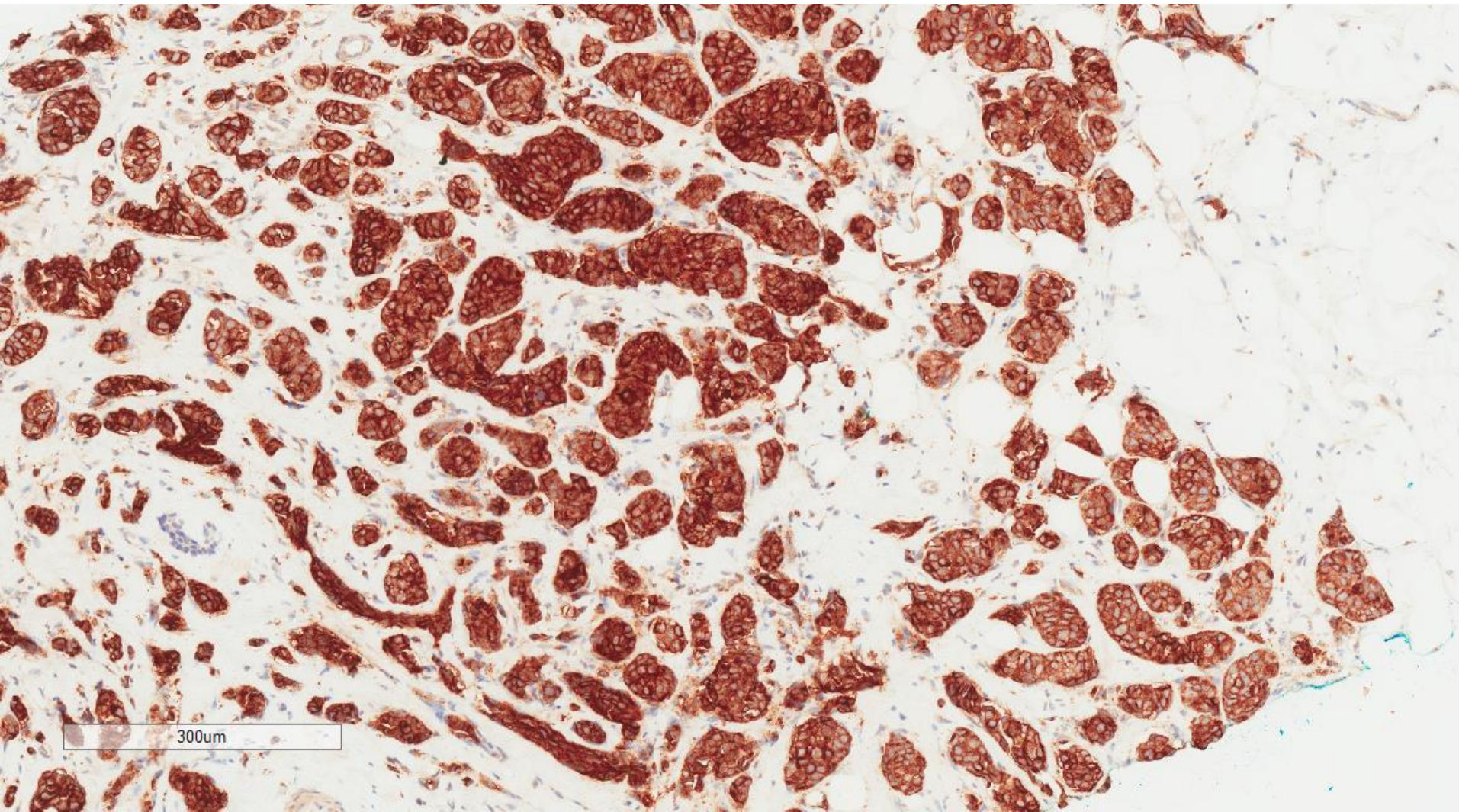
ER



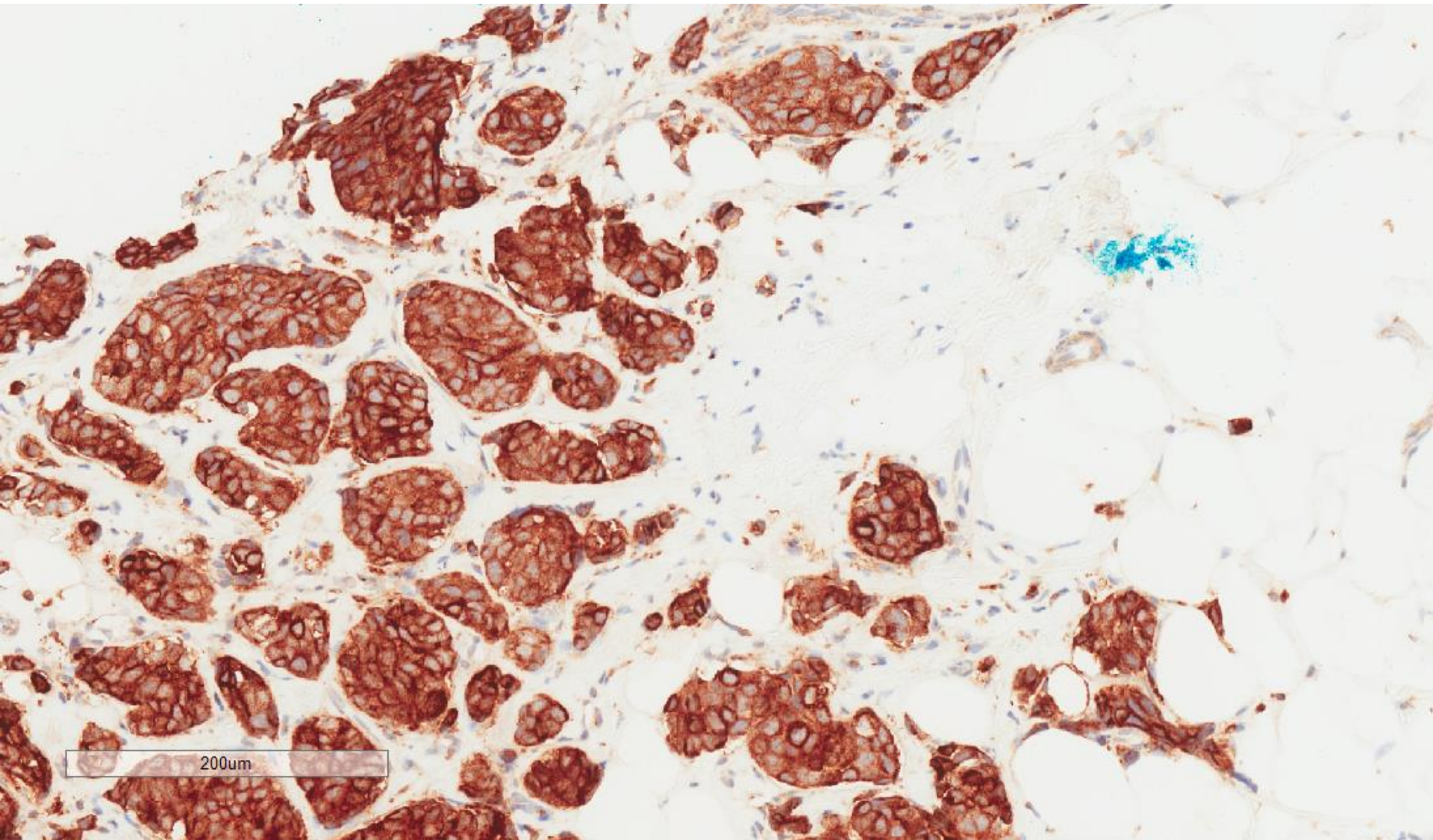
ER



synaptophysin



synaptophysin



Ultrasound guided trucut biopsy, right breast:
Invasive carcinoma with ductal features and
neuroendocrine differentiation
ER positive, PR negative, cerbB2 negative