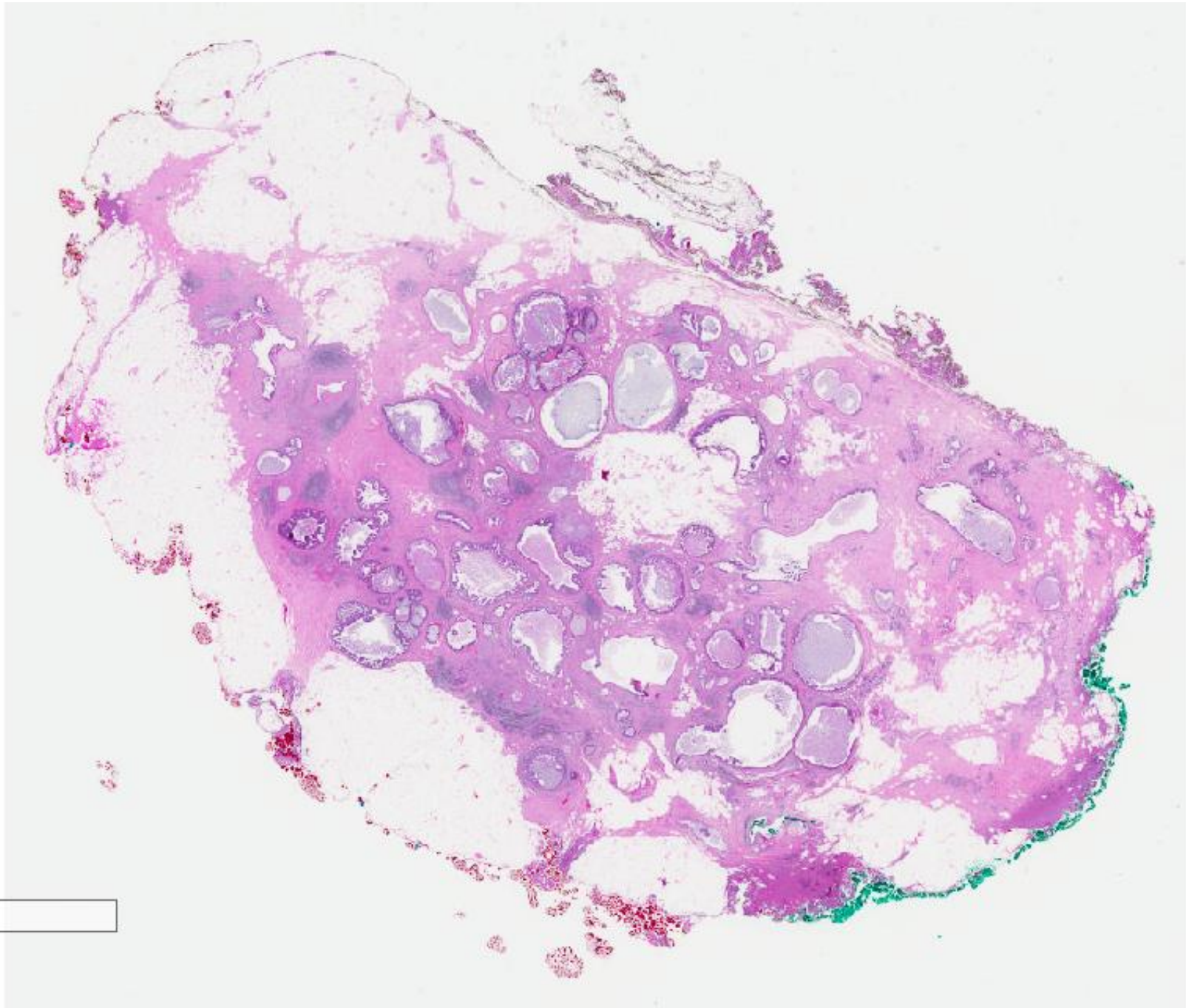
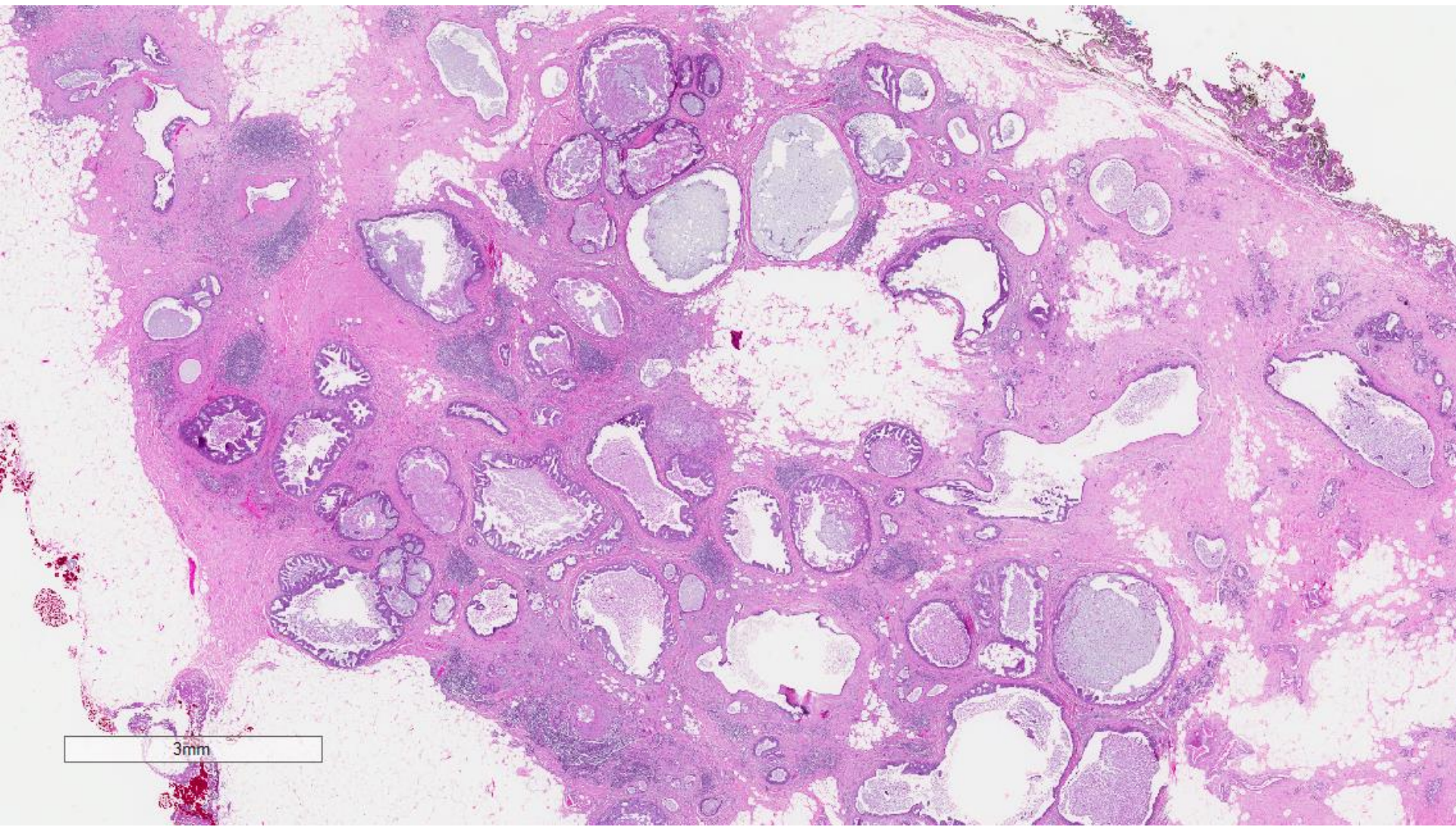


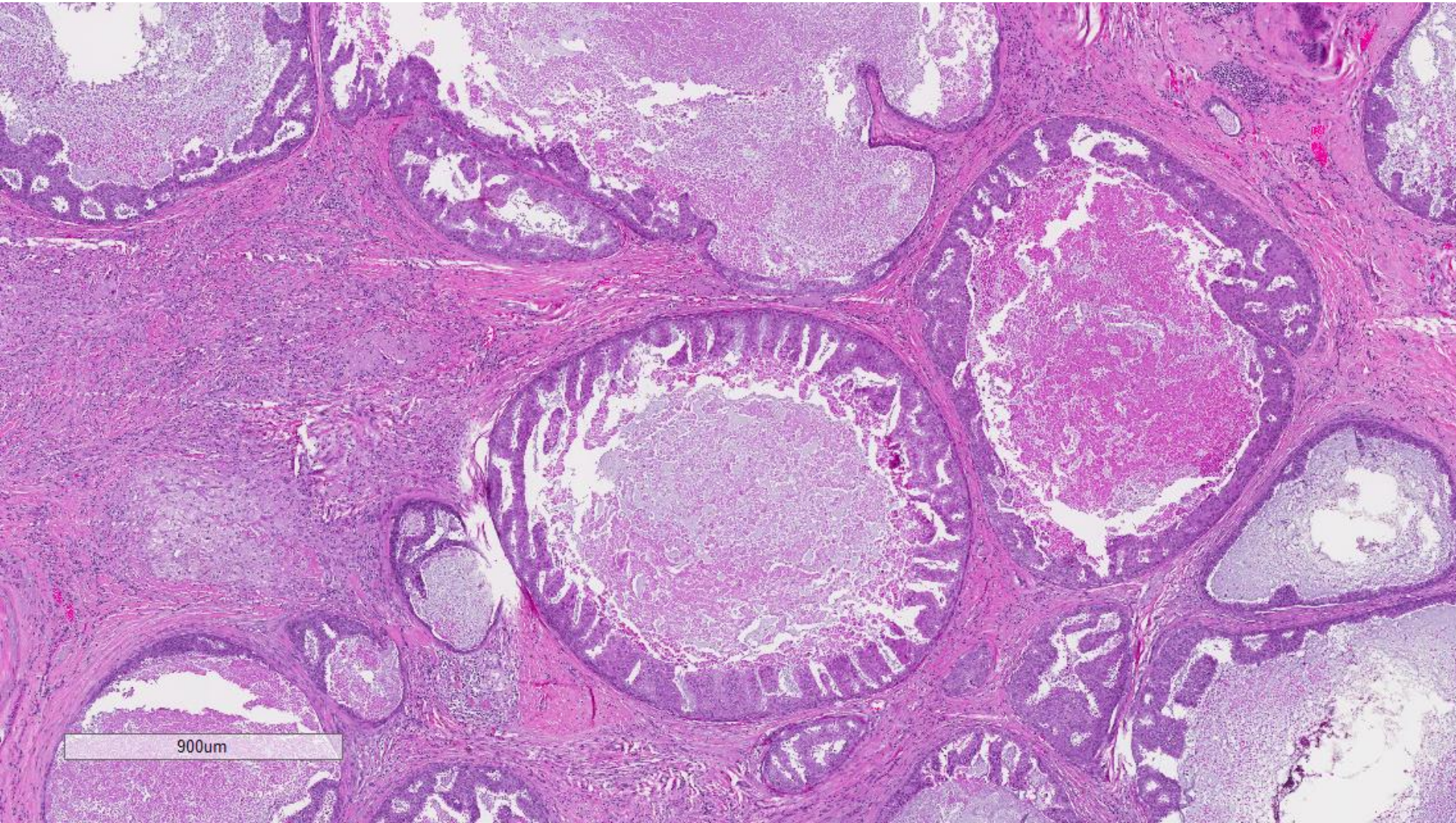
Case 17

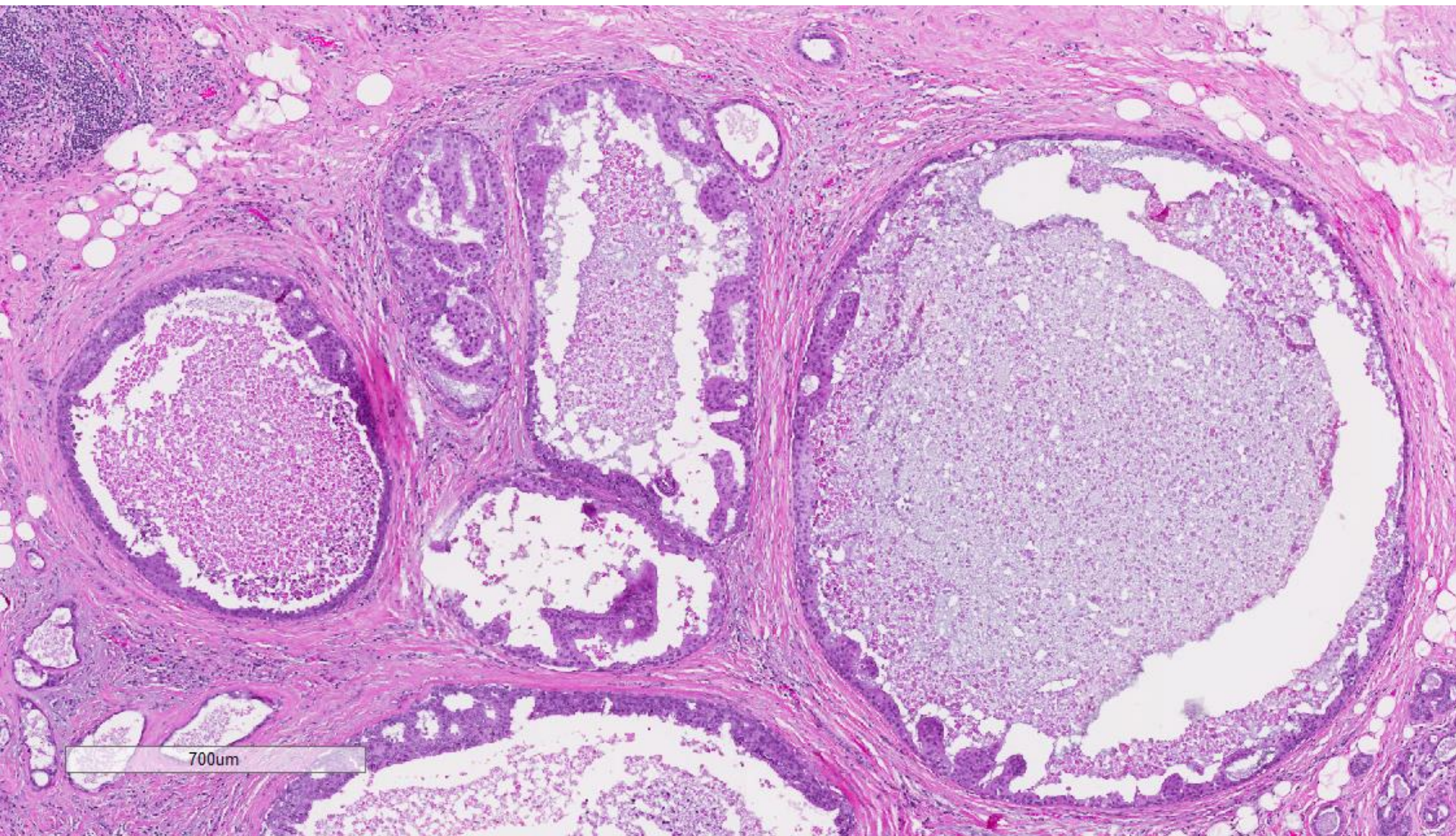
58 year old lady underwent excision of a left breast mass.

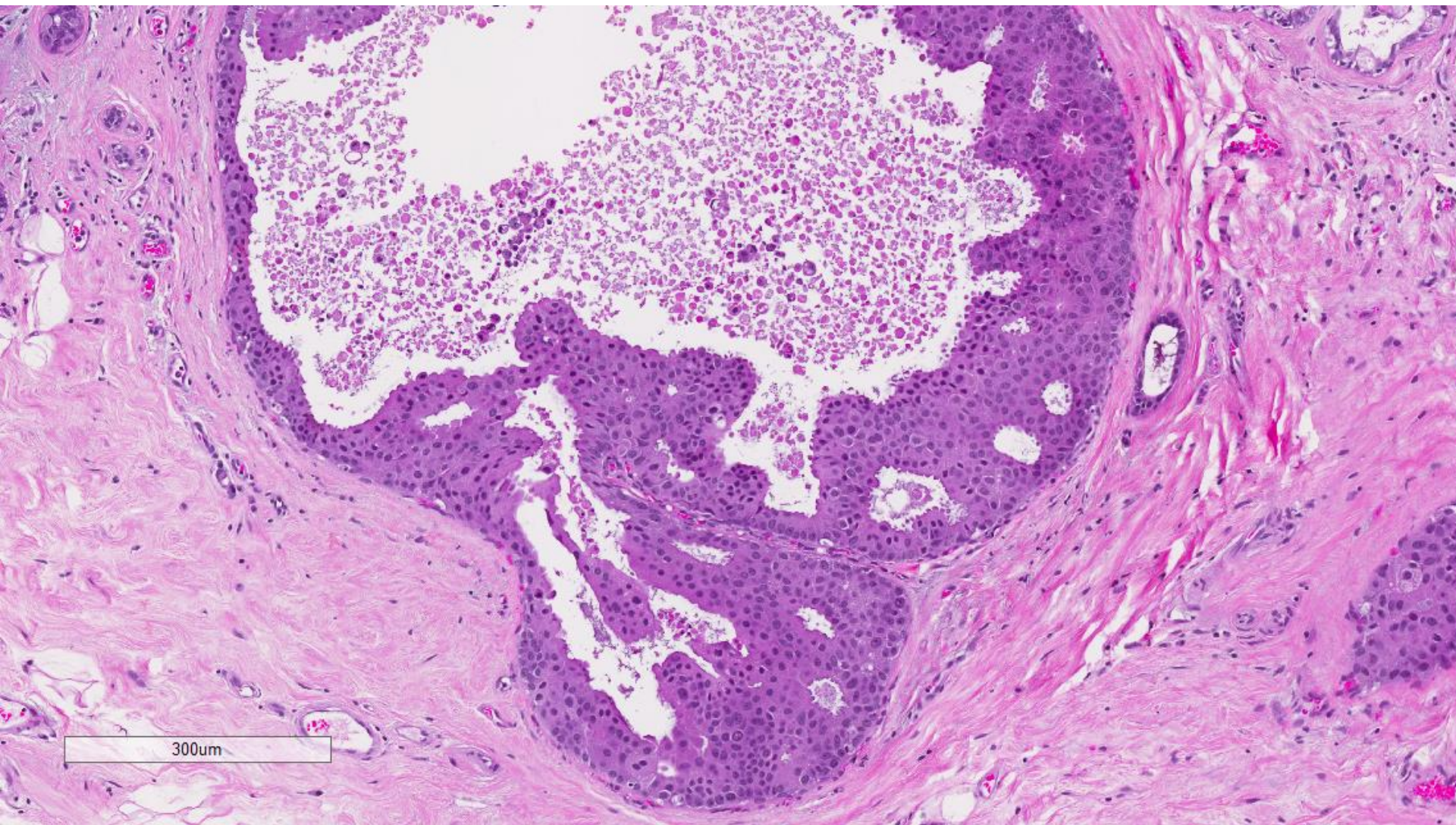


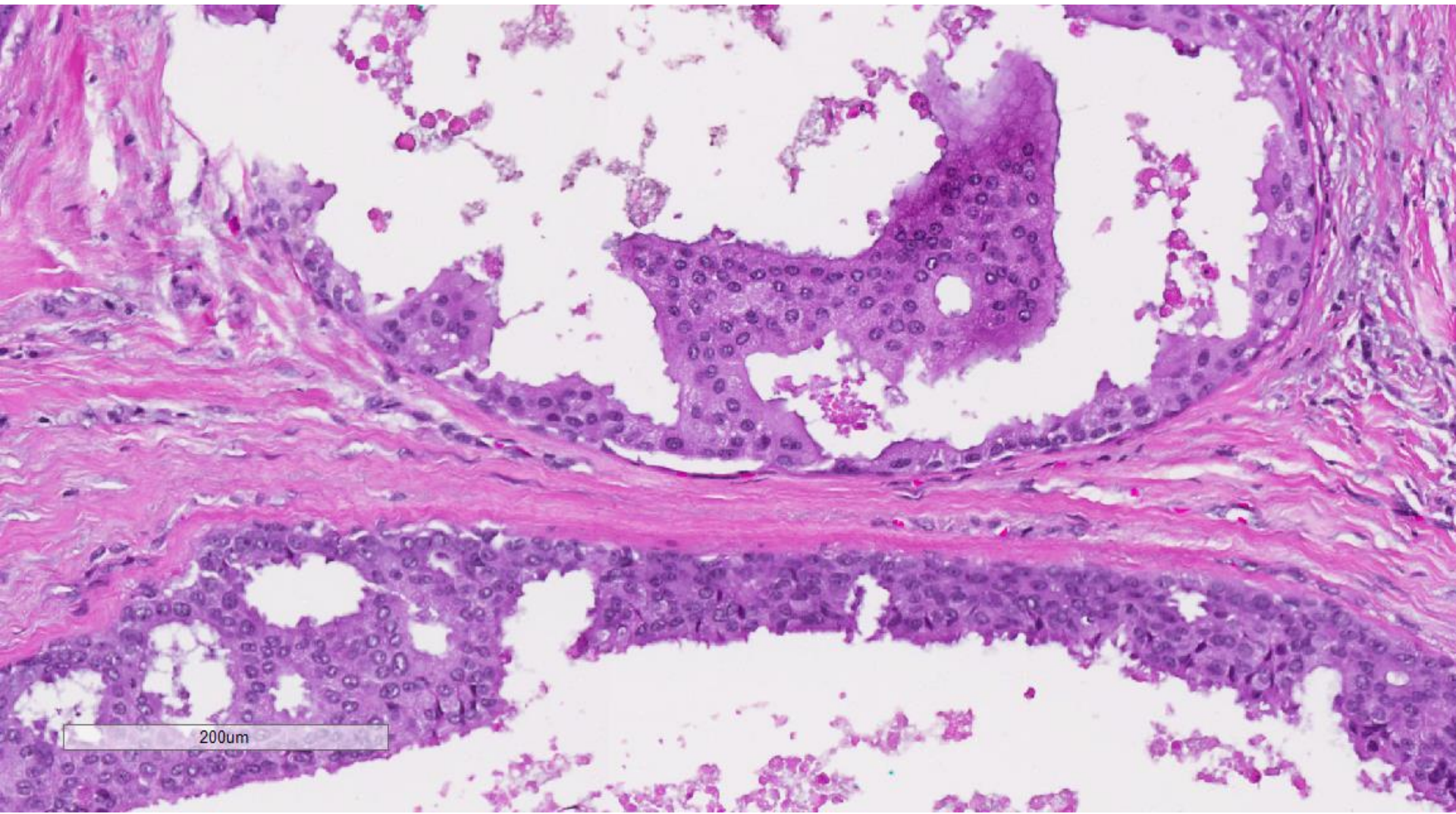
7mm



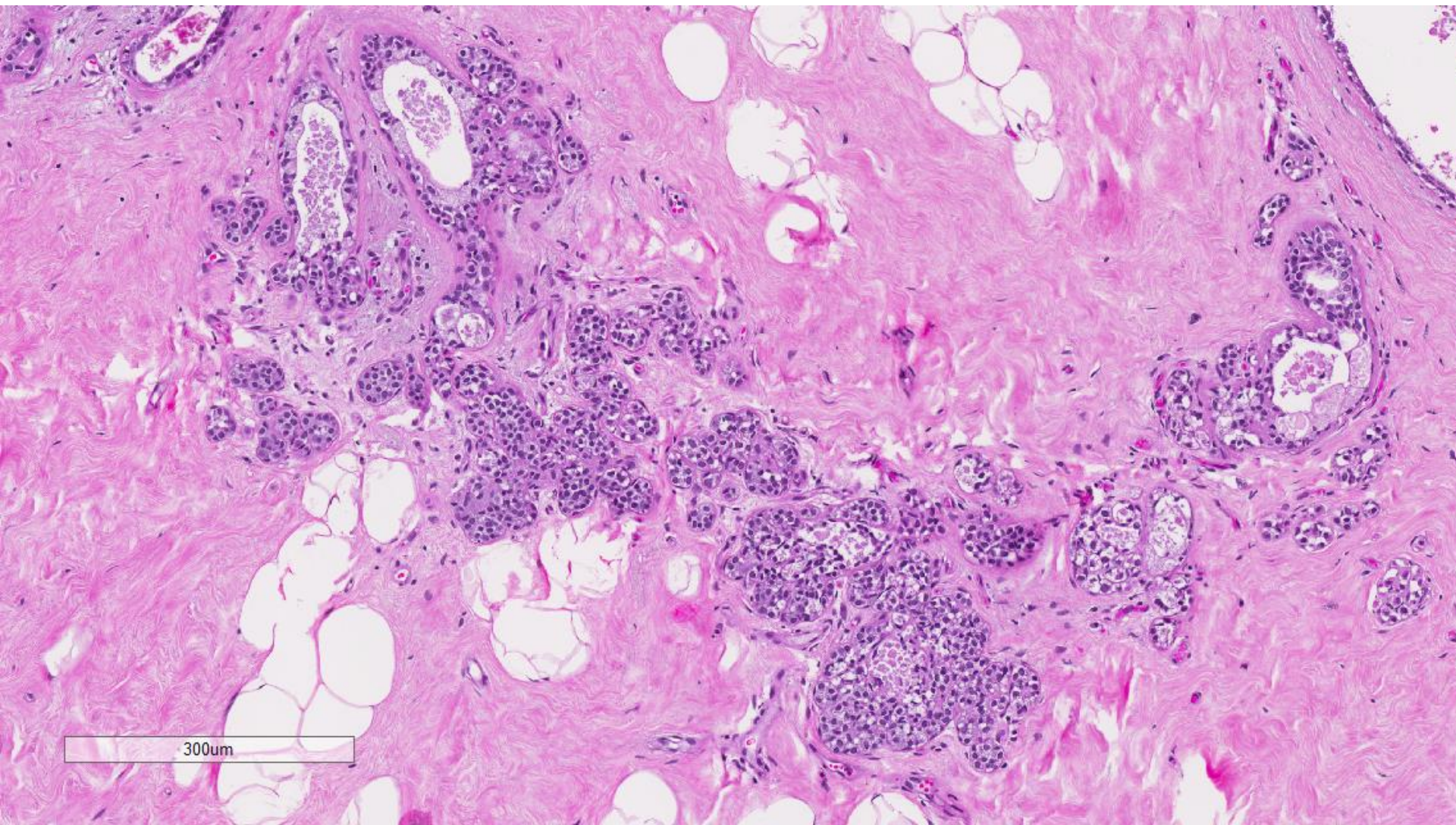




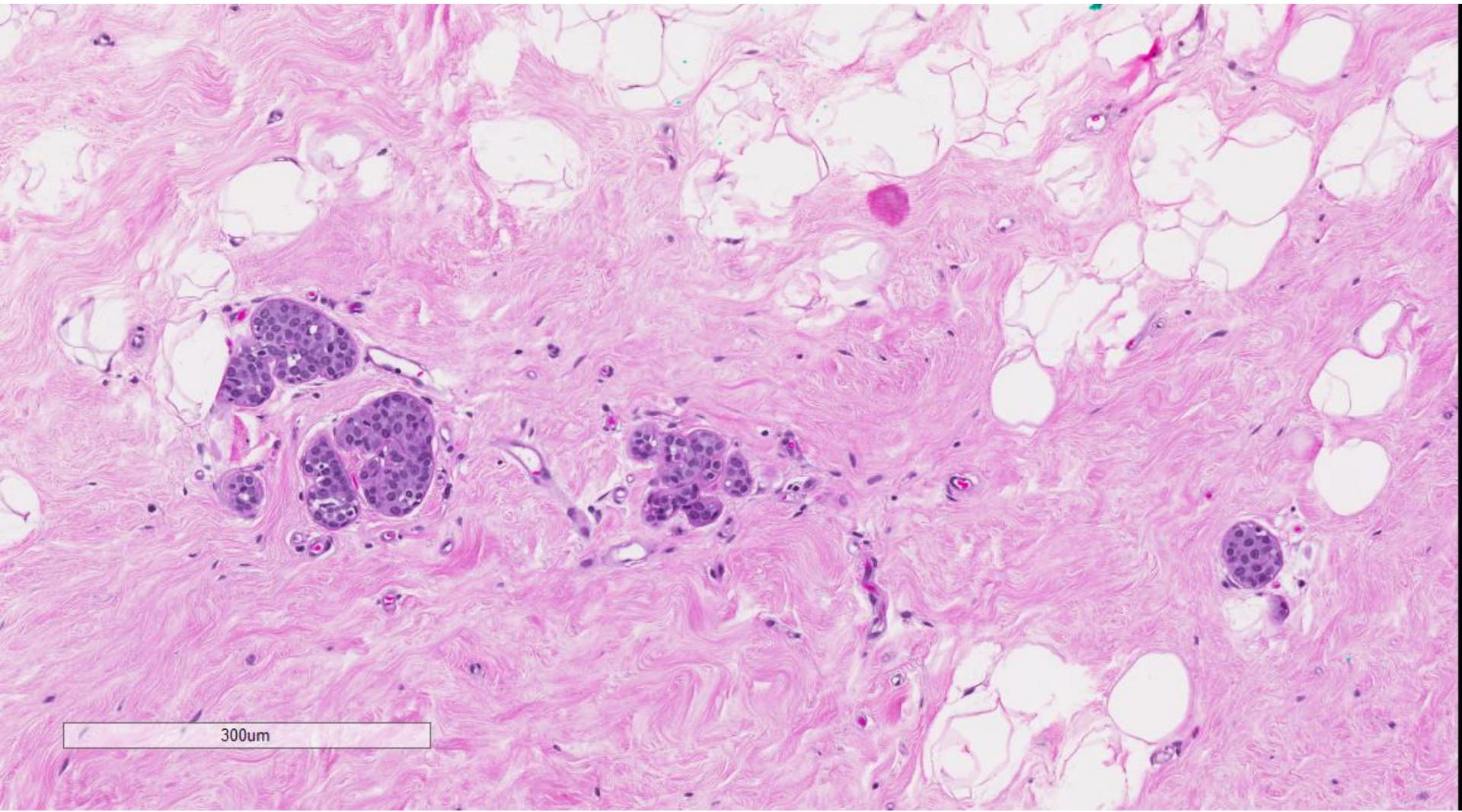




200um



300um



300um

Ductal carcinoma in situ, intermediate to high nuclear grade, with necrosis and calcifications, with apocrine morphology, estimated size 41 mm

Atypical lobular hyperplasia

DCIS with apocrine features

- A minority of DCIS lesions is composed of apocrine, signet ring, neuroendocrine, spindled, squamous or clear cells.
- No consensus or uniform approach to grading of these unusual variants.
- Some use the assessment of nuclear features and necrosis for grading.