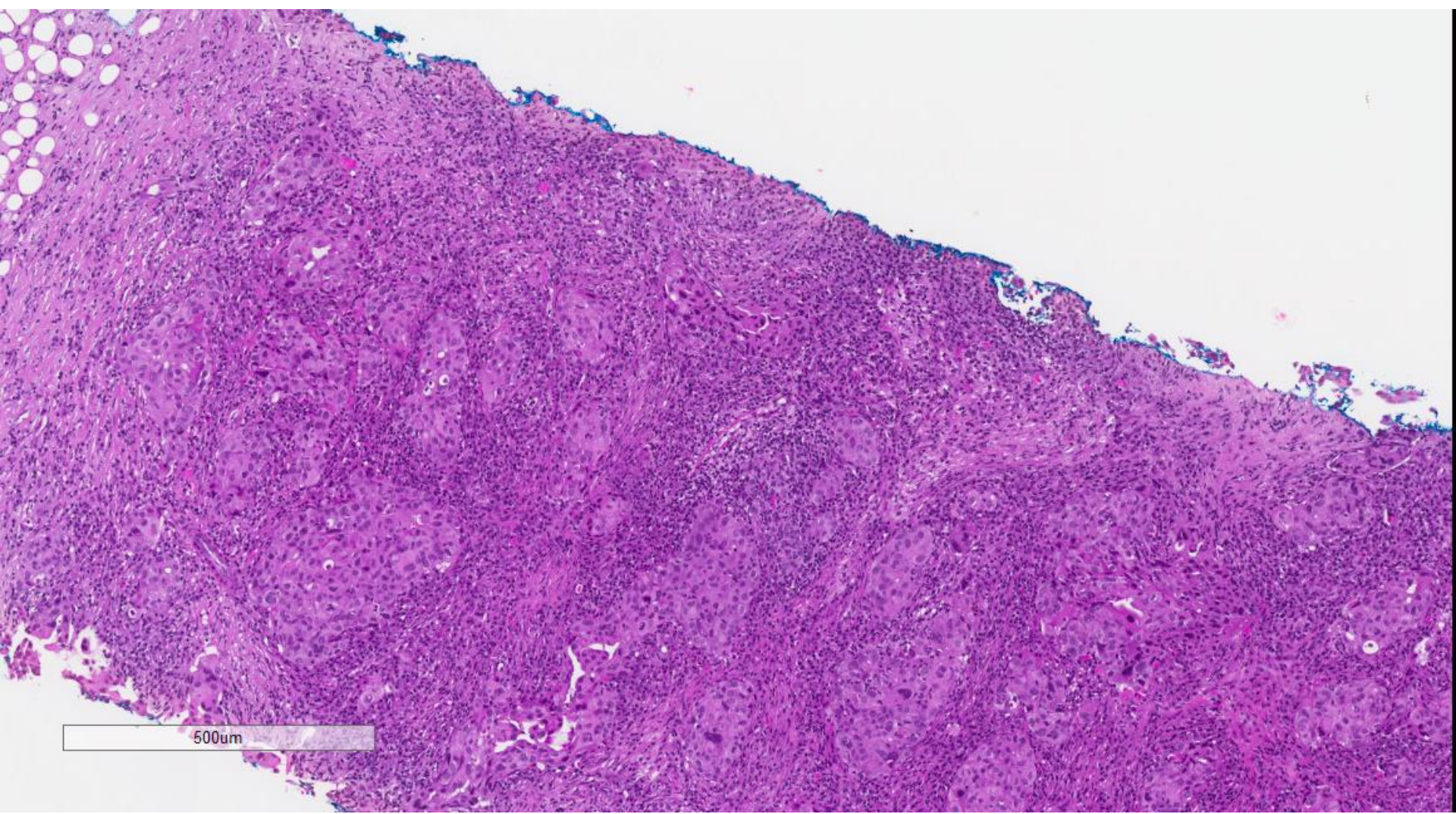


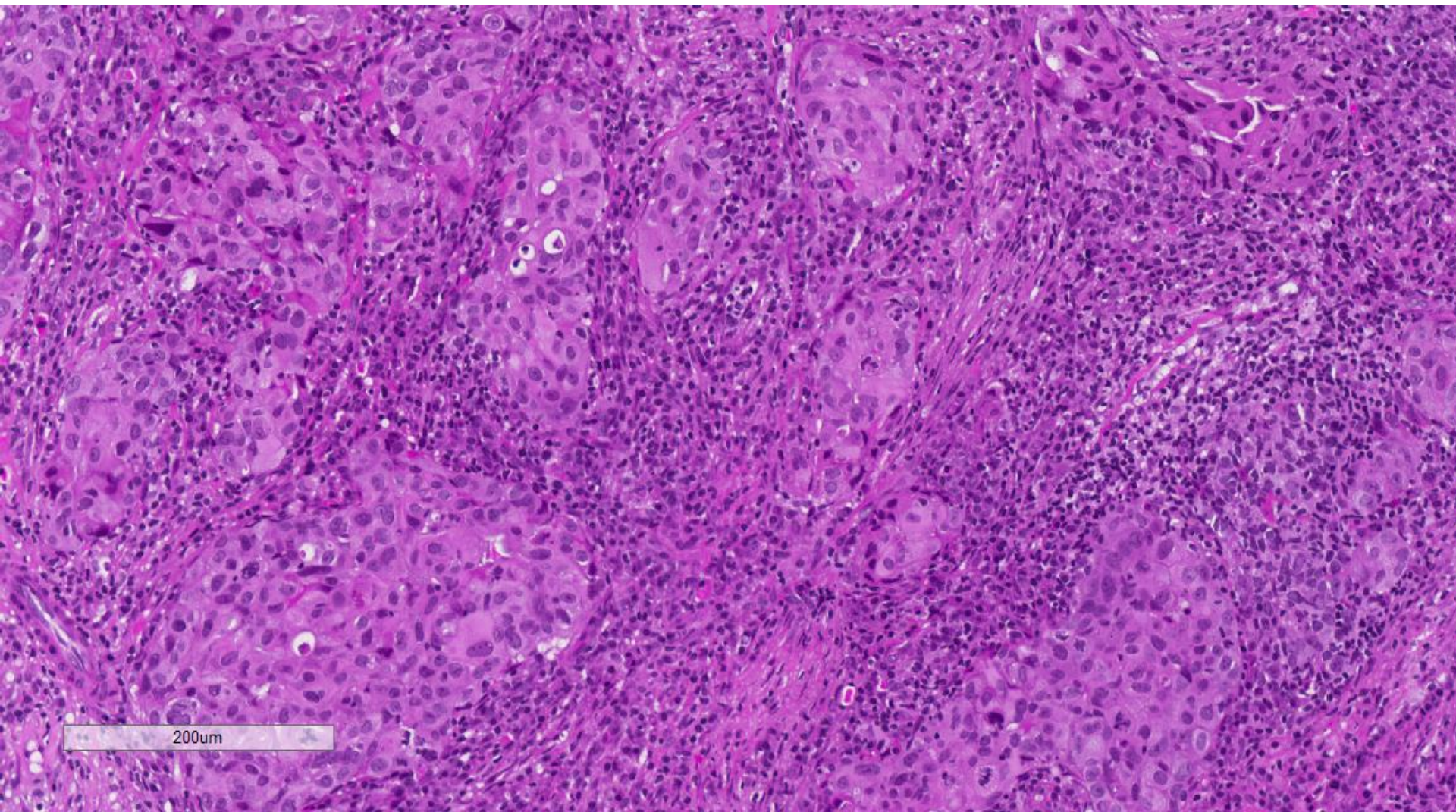
Case 12

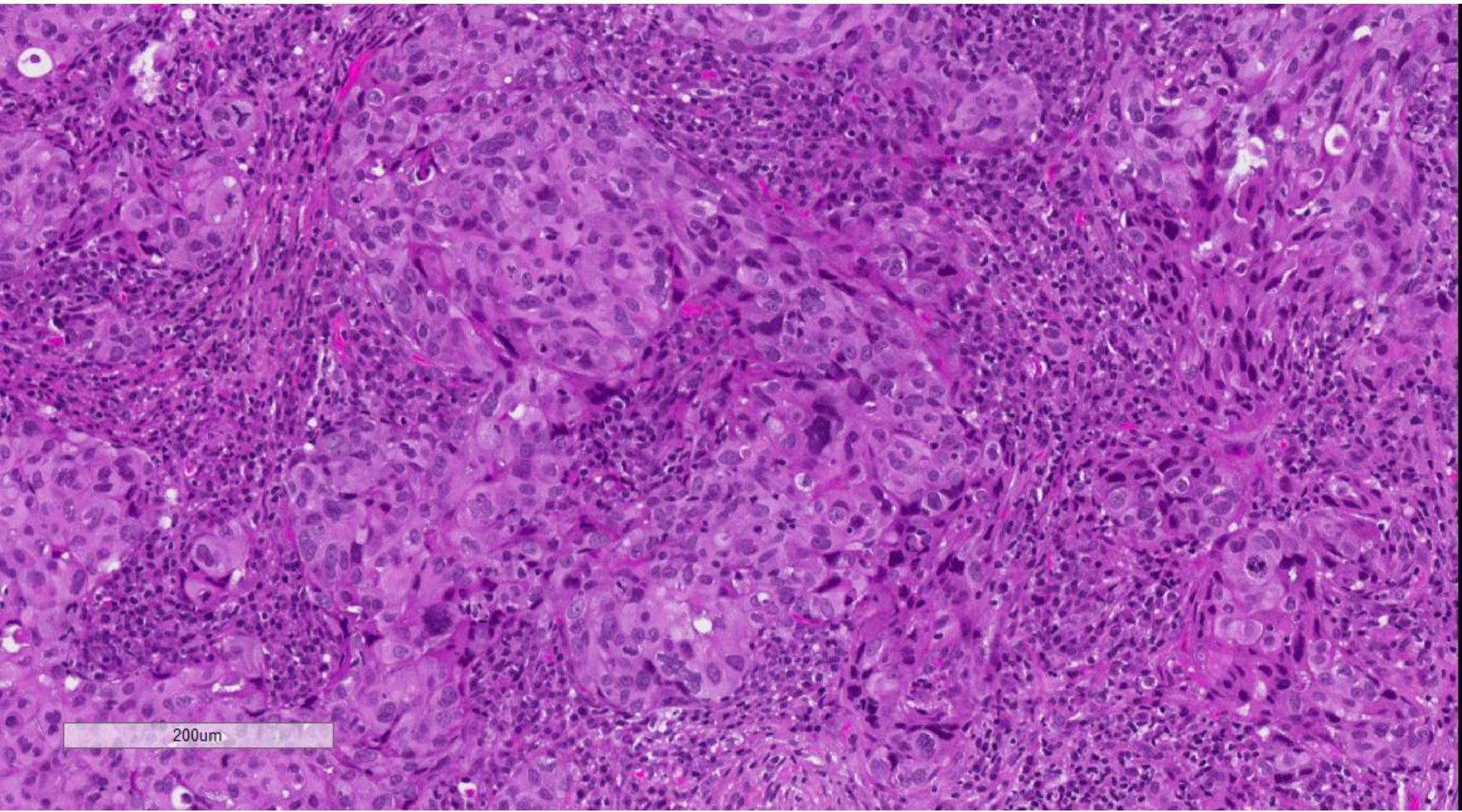
40 year old lady presented with a left breast mass. An ultrasound guided trucut biopsy was performed.



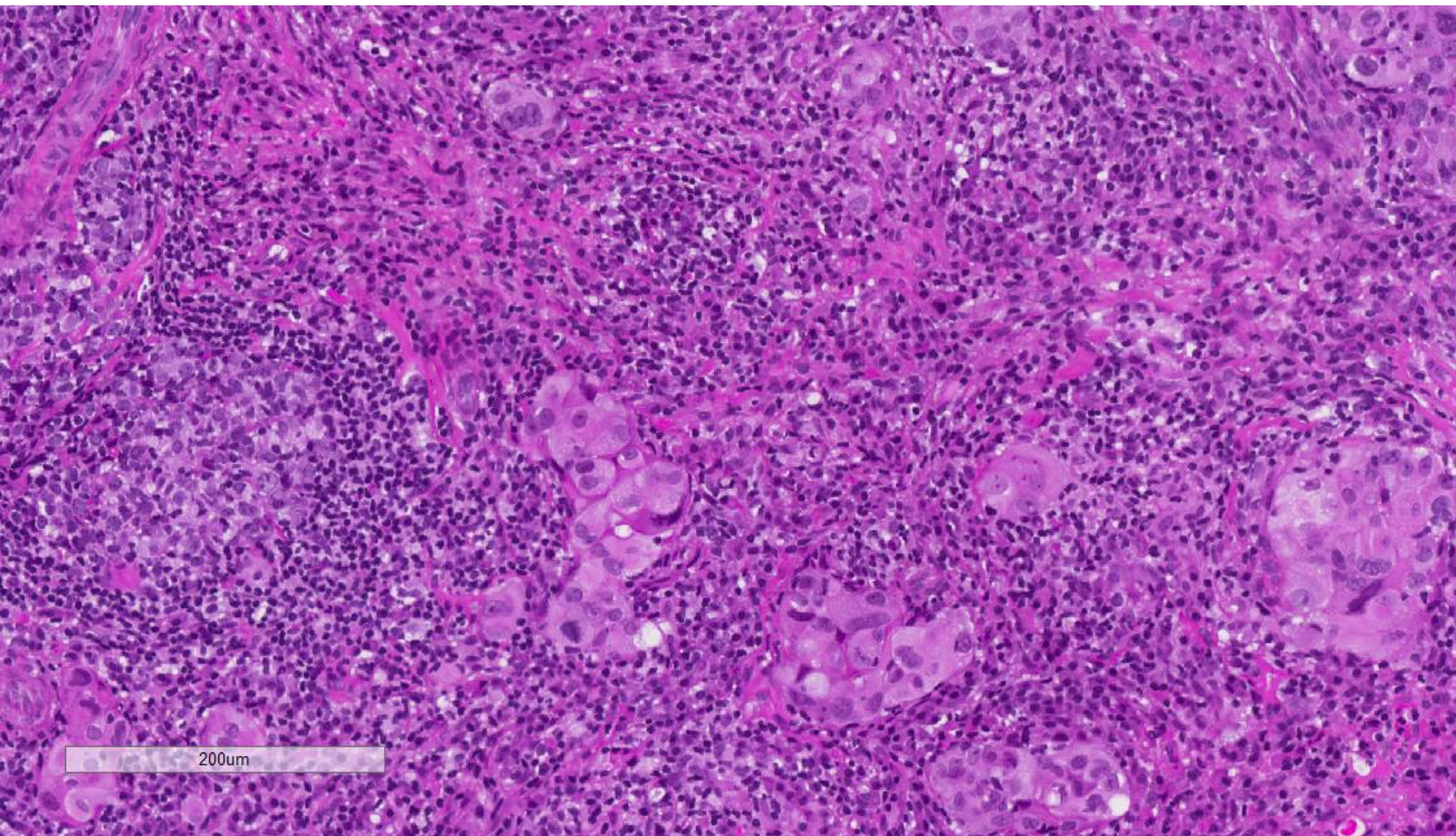
3mm



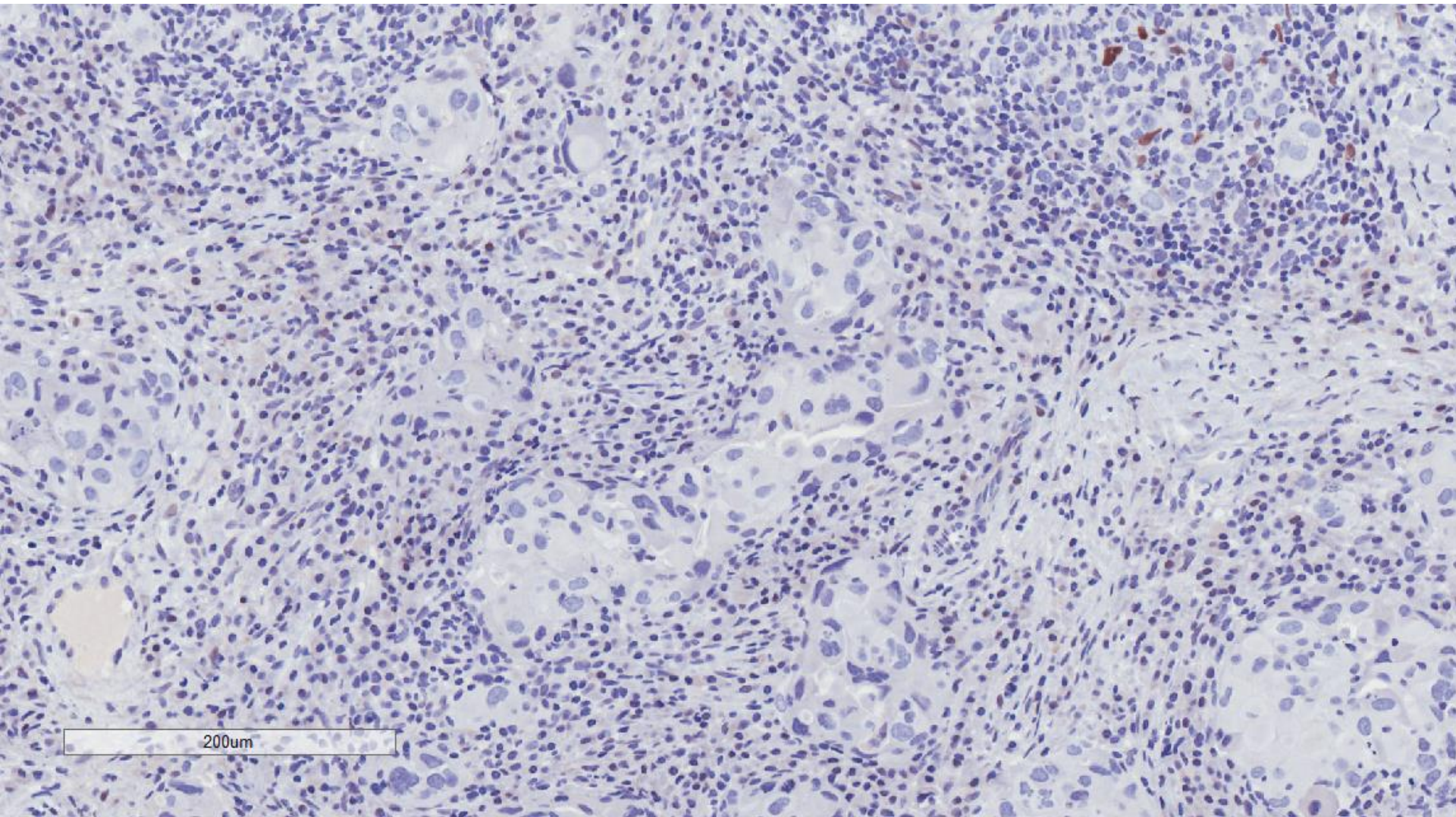




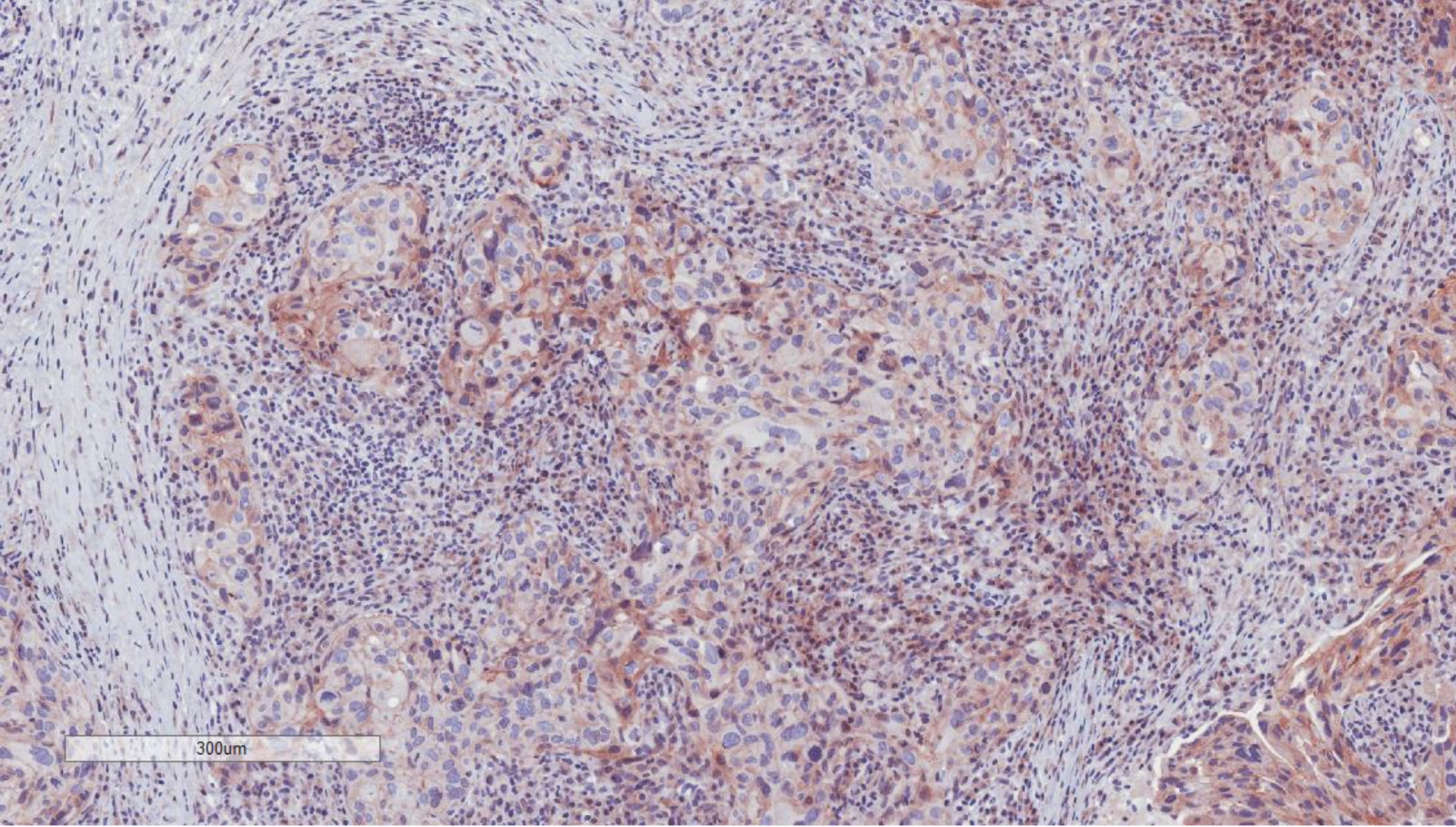
200um



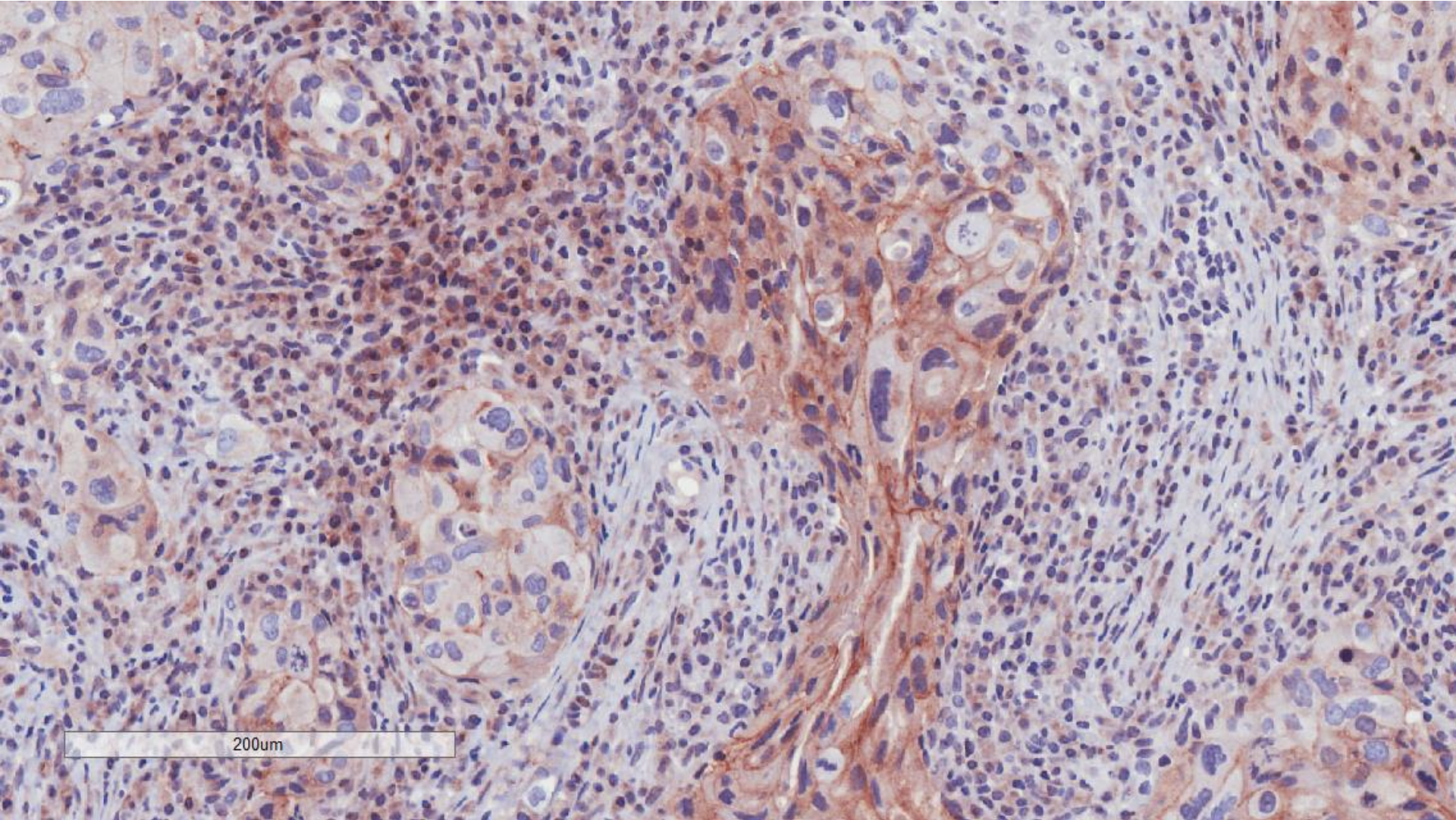
ER



cerbB2



cerbB2



Ultrasound guided trucut biopsy, left breast
nodule:

Invasive carcinoma with medullary-like features,
ER negative, PR negative, cerbB2 negative (1+)