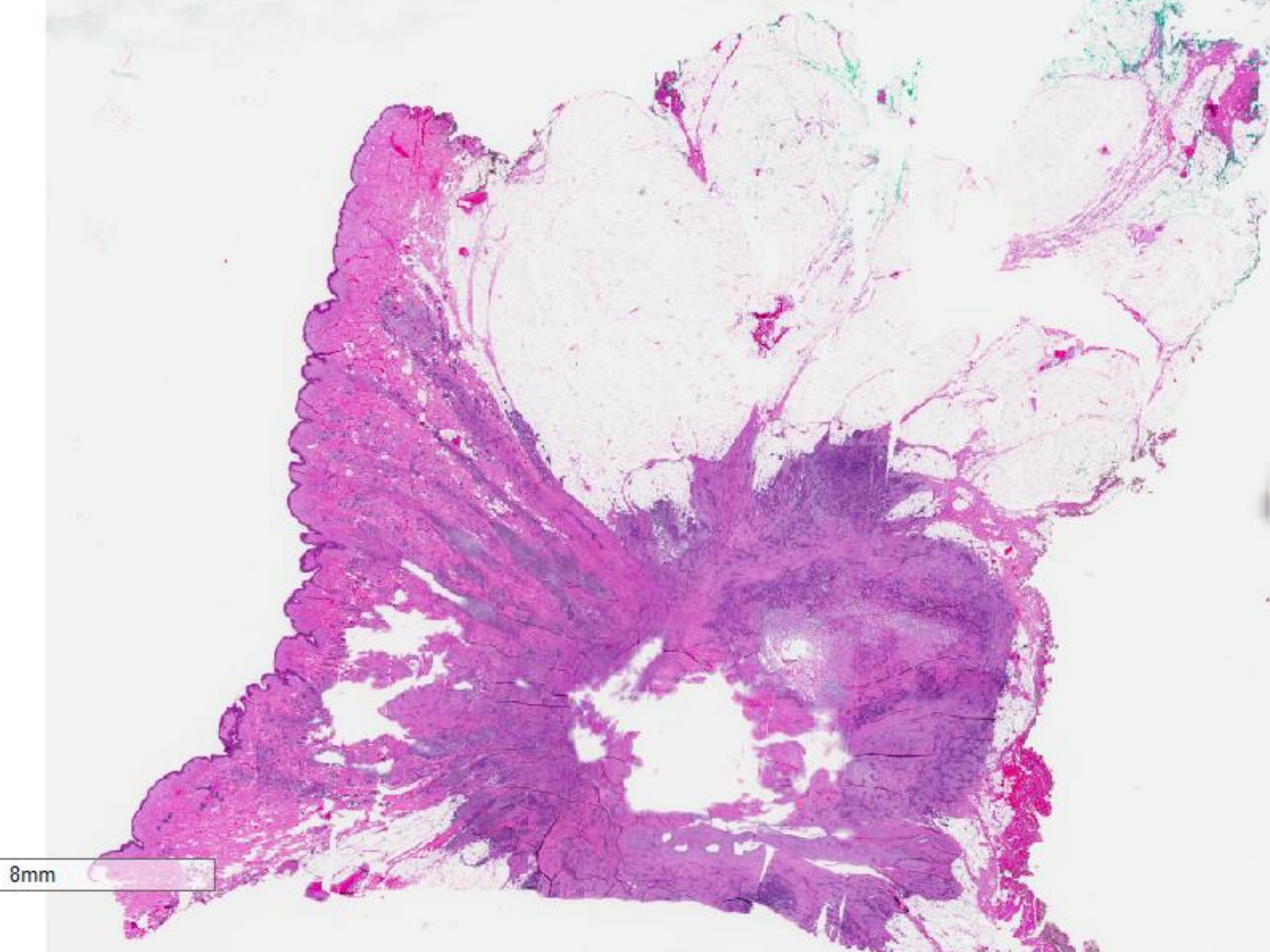


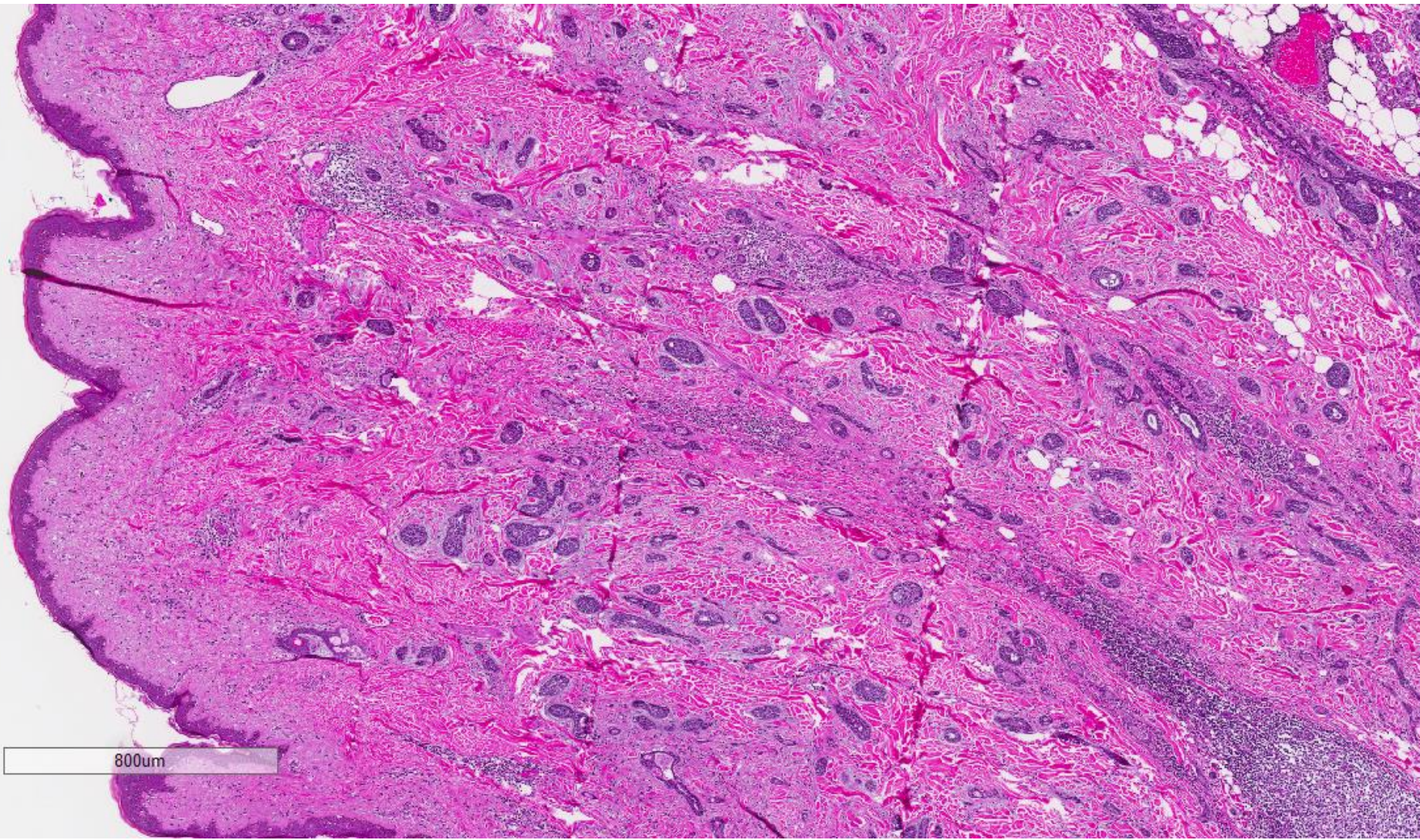
# Case 9

81 year old lady underwent a left  
mastectomy.

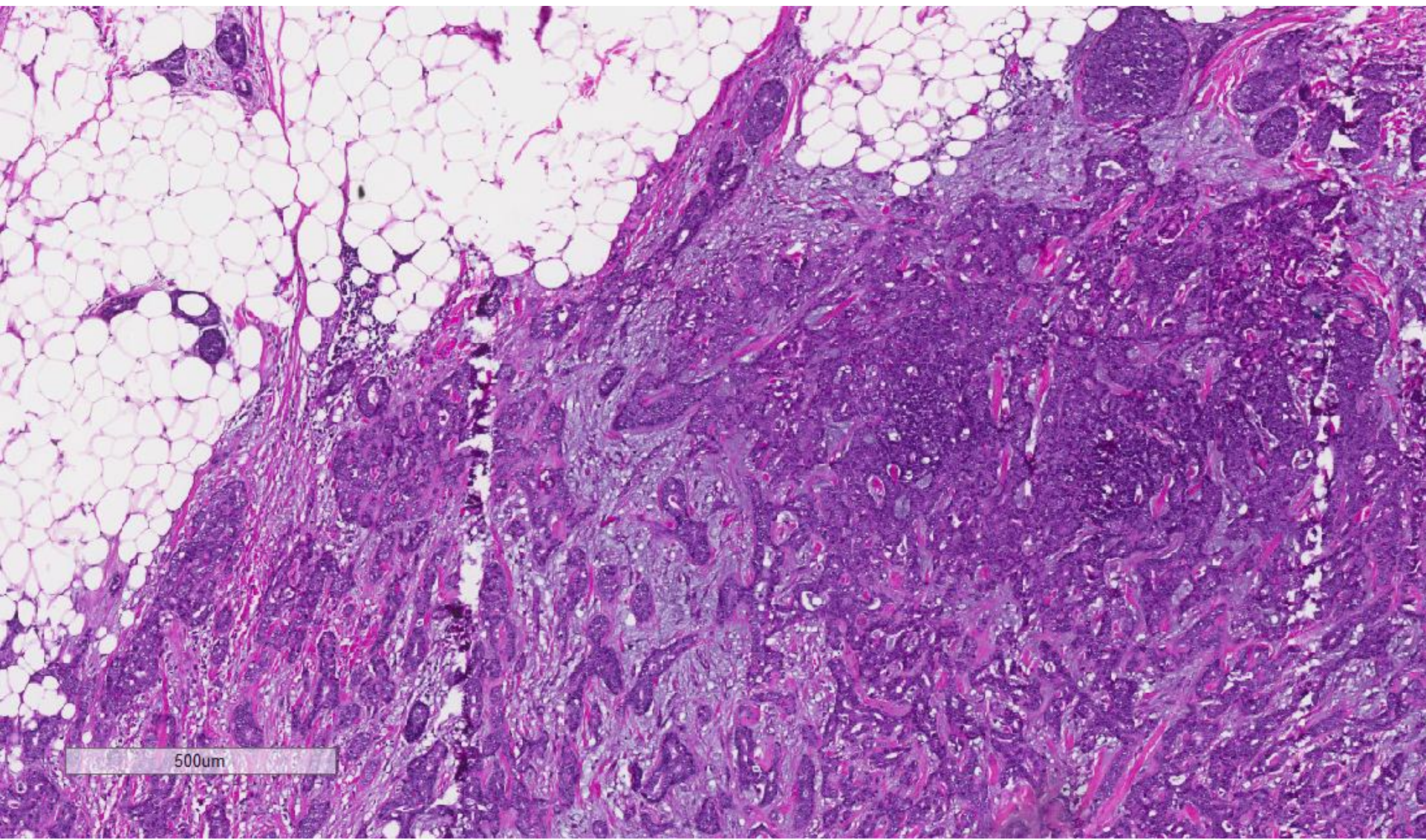


8mm



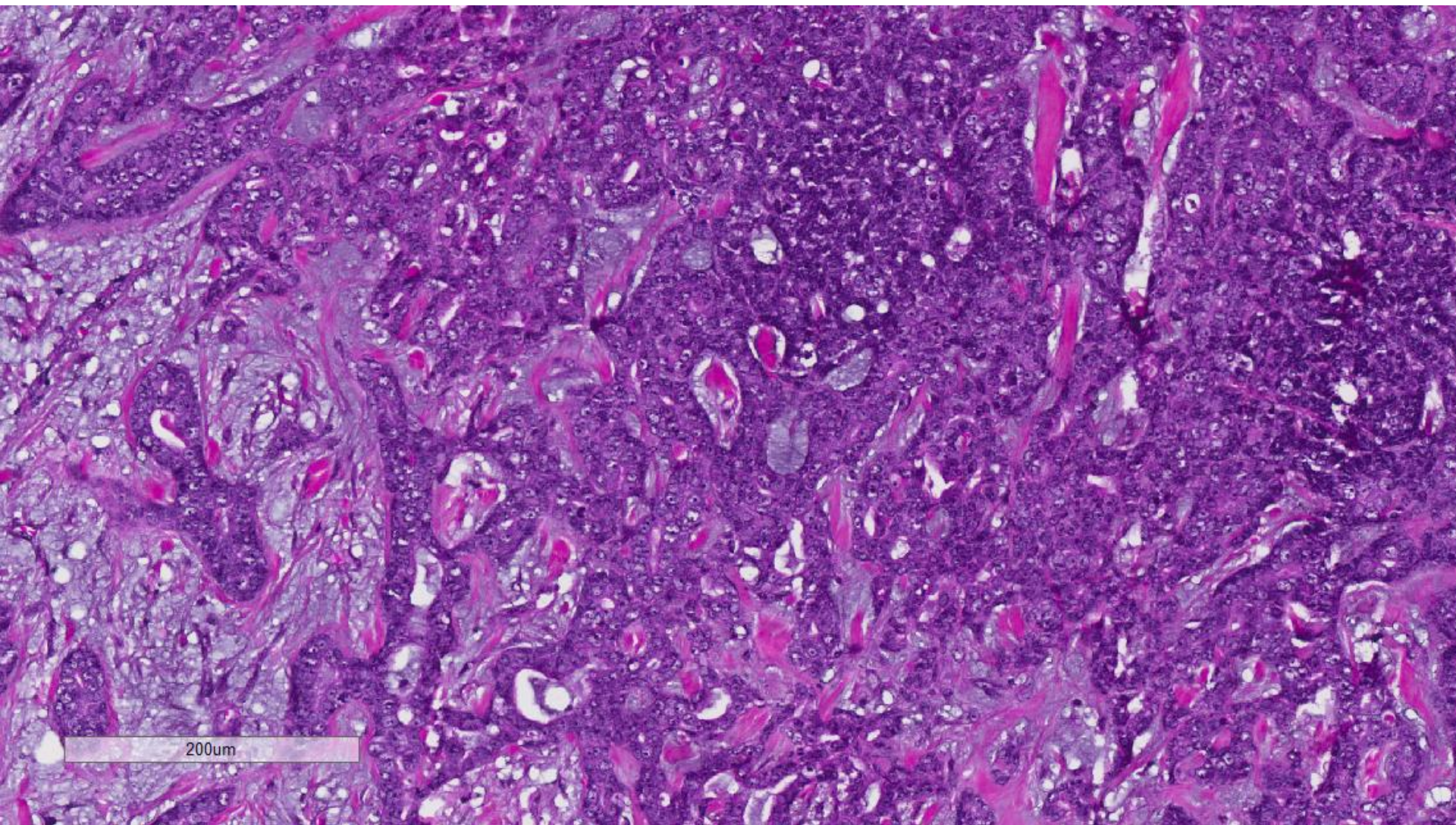






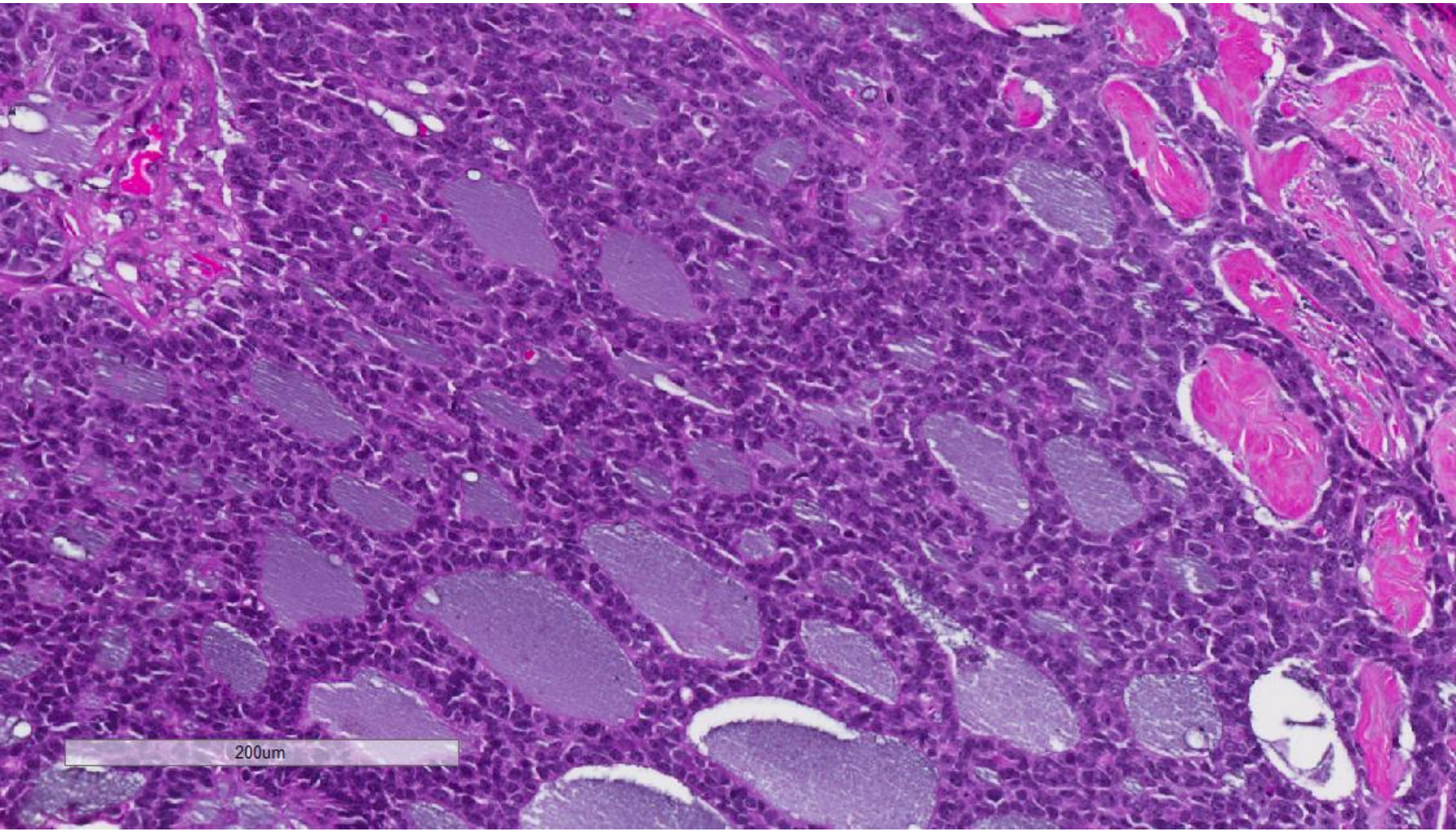
500um





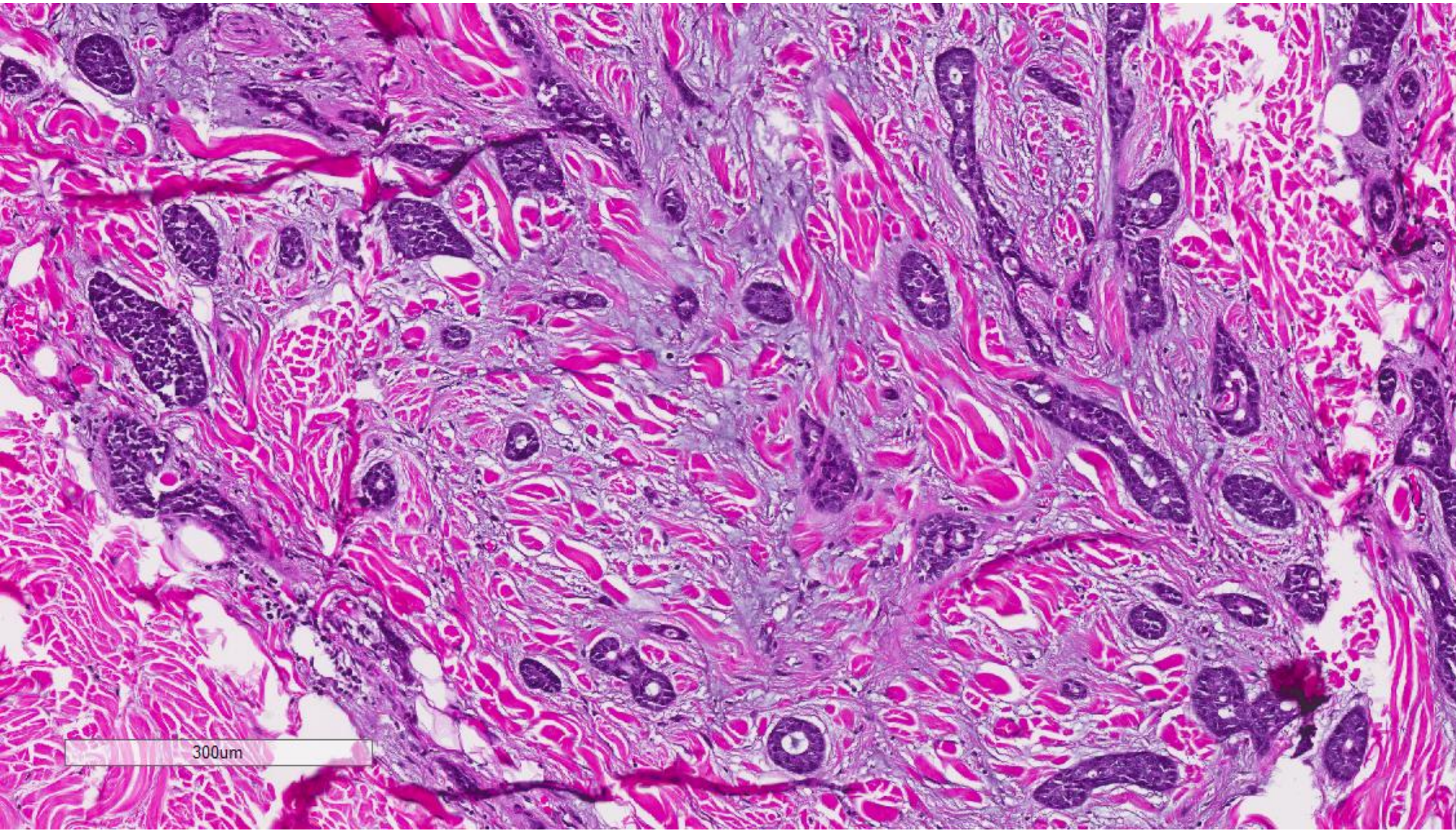
200um



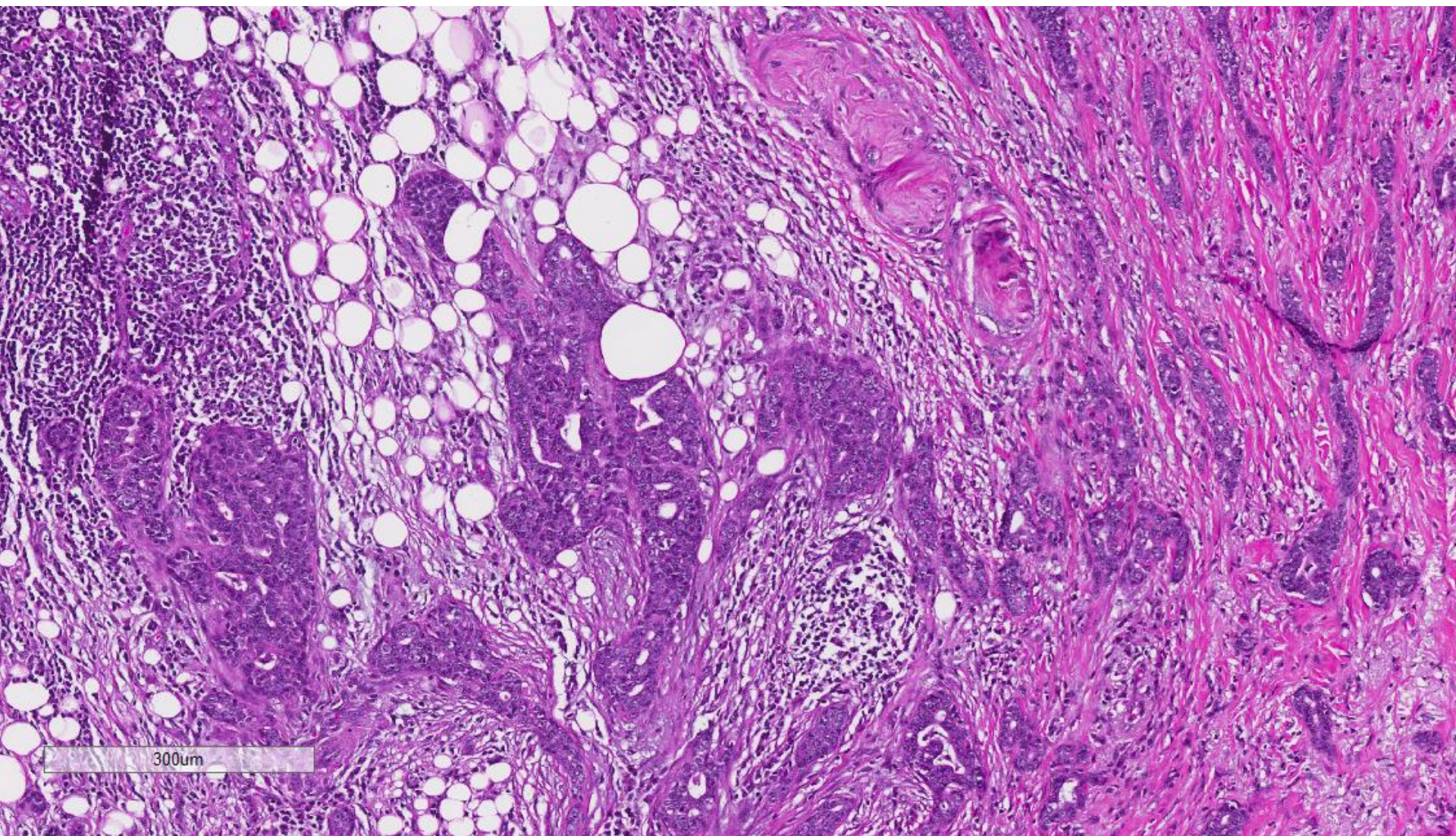


200um



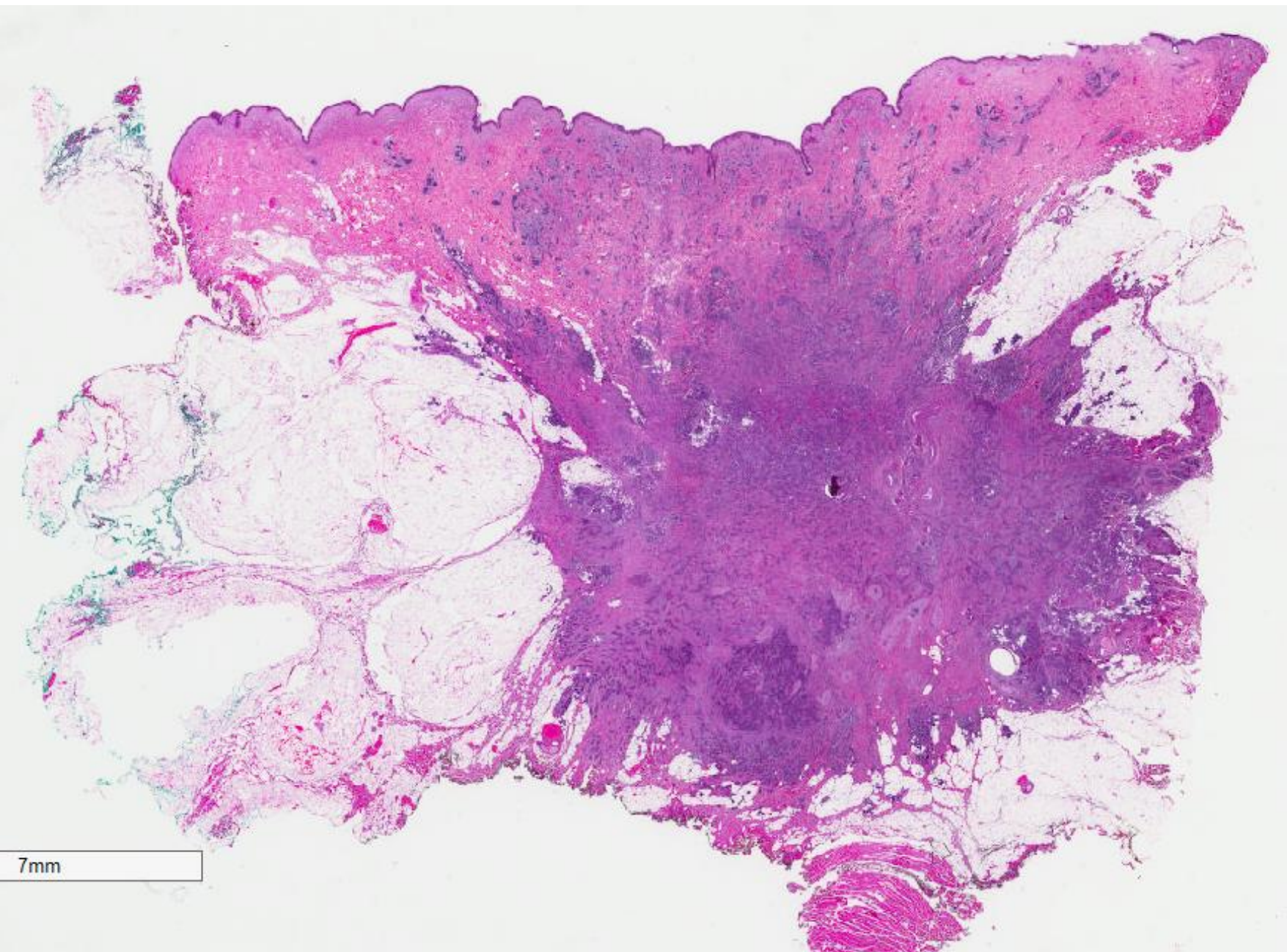




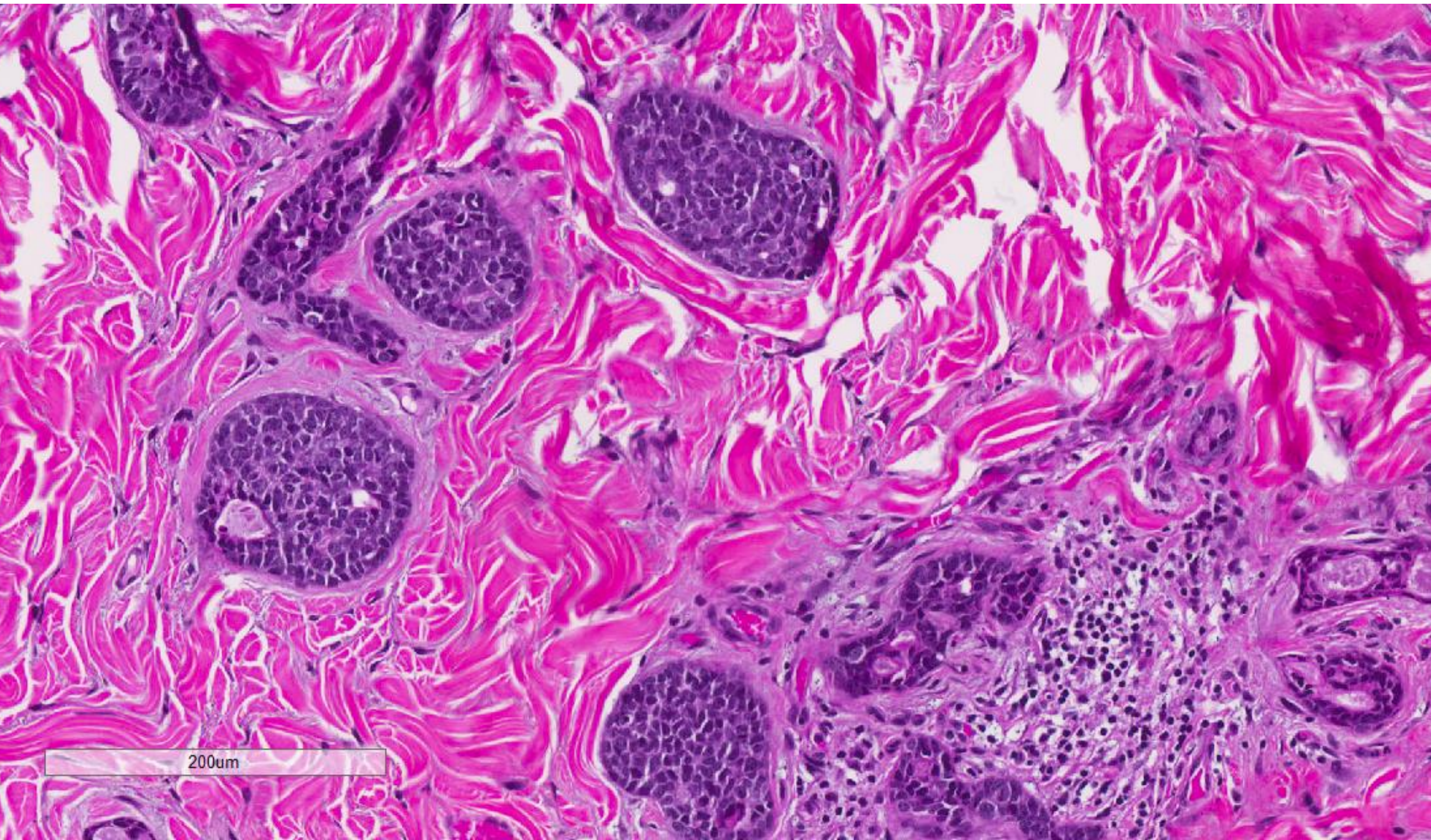


300um

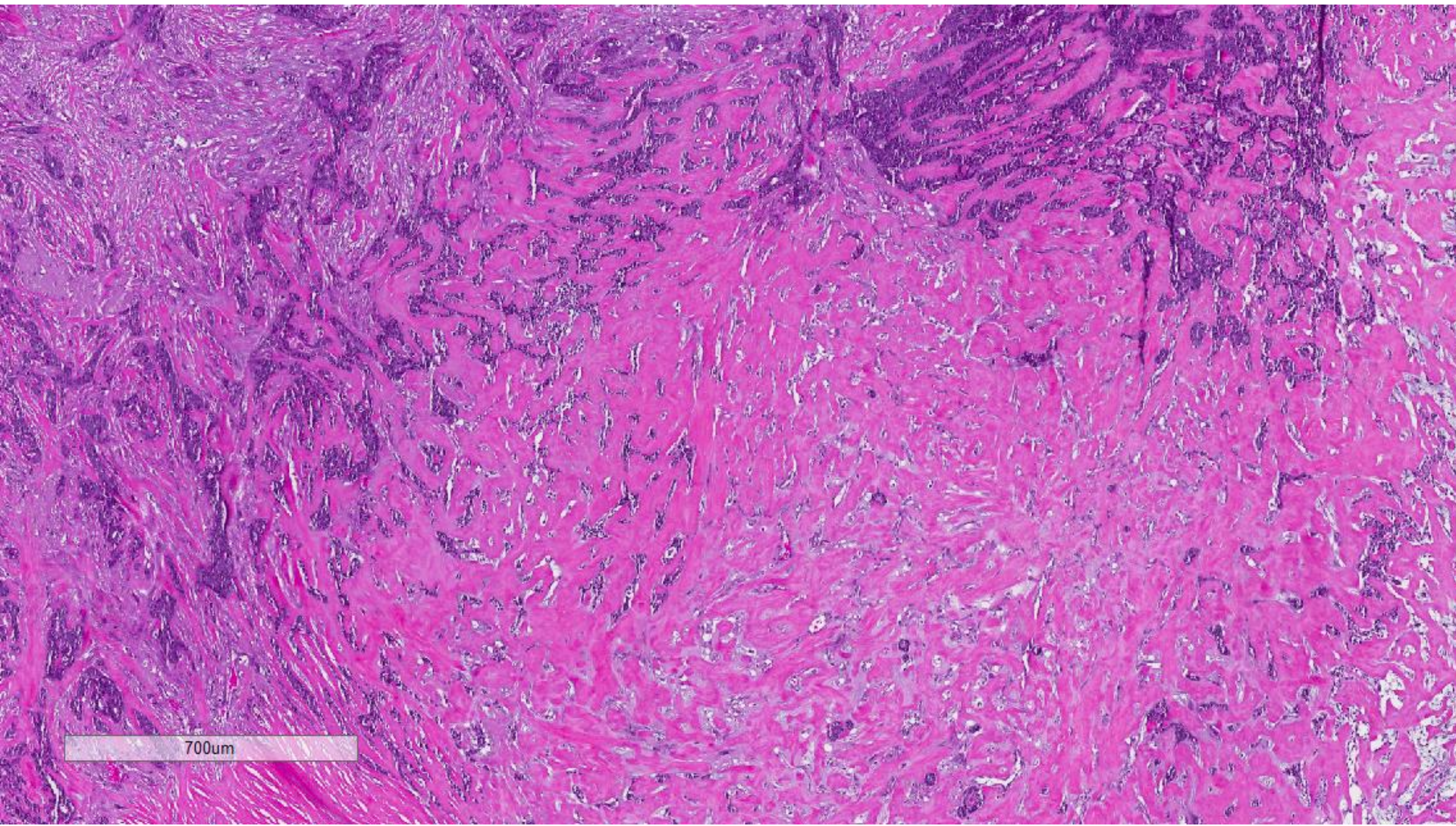






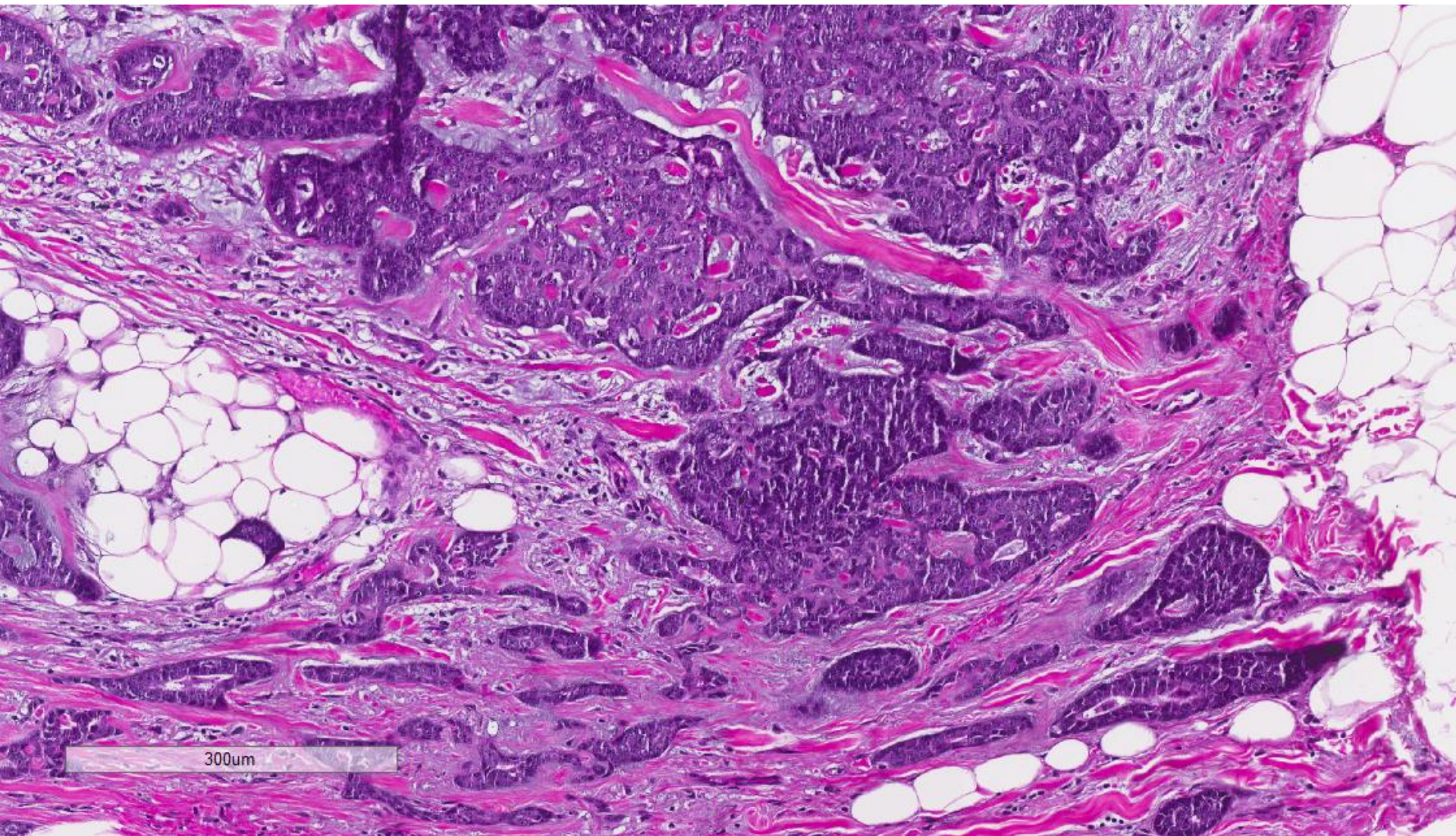






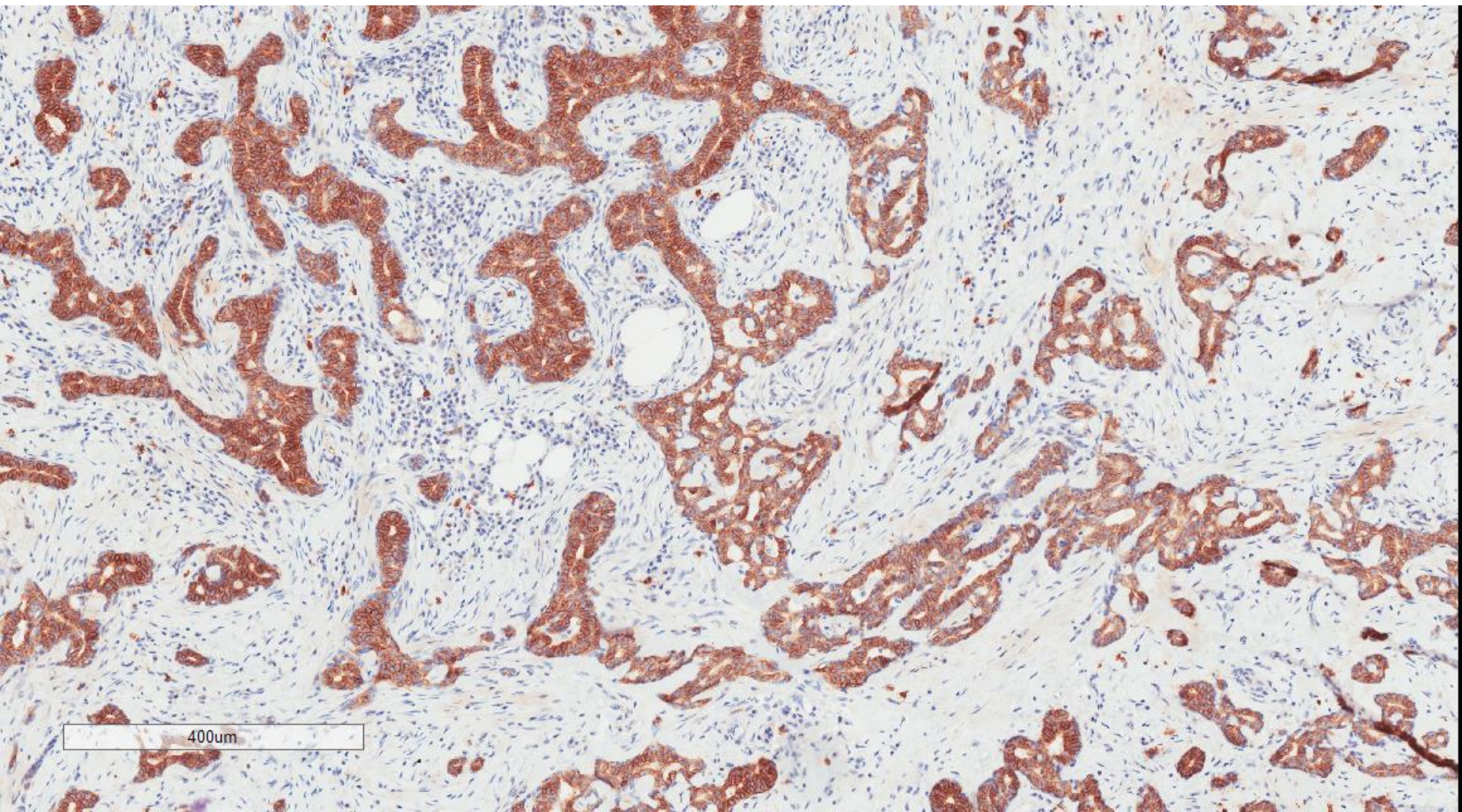
700um





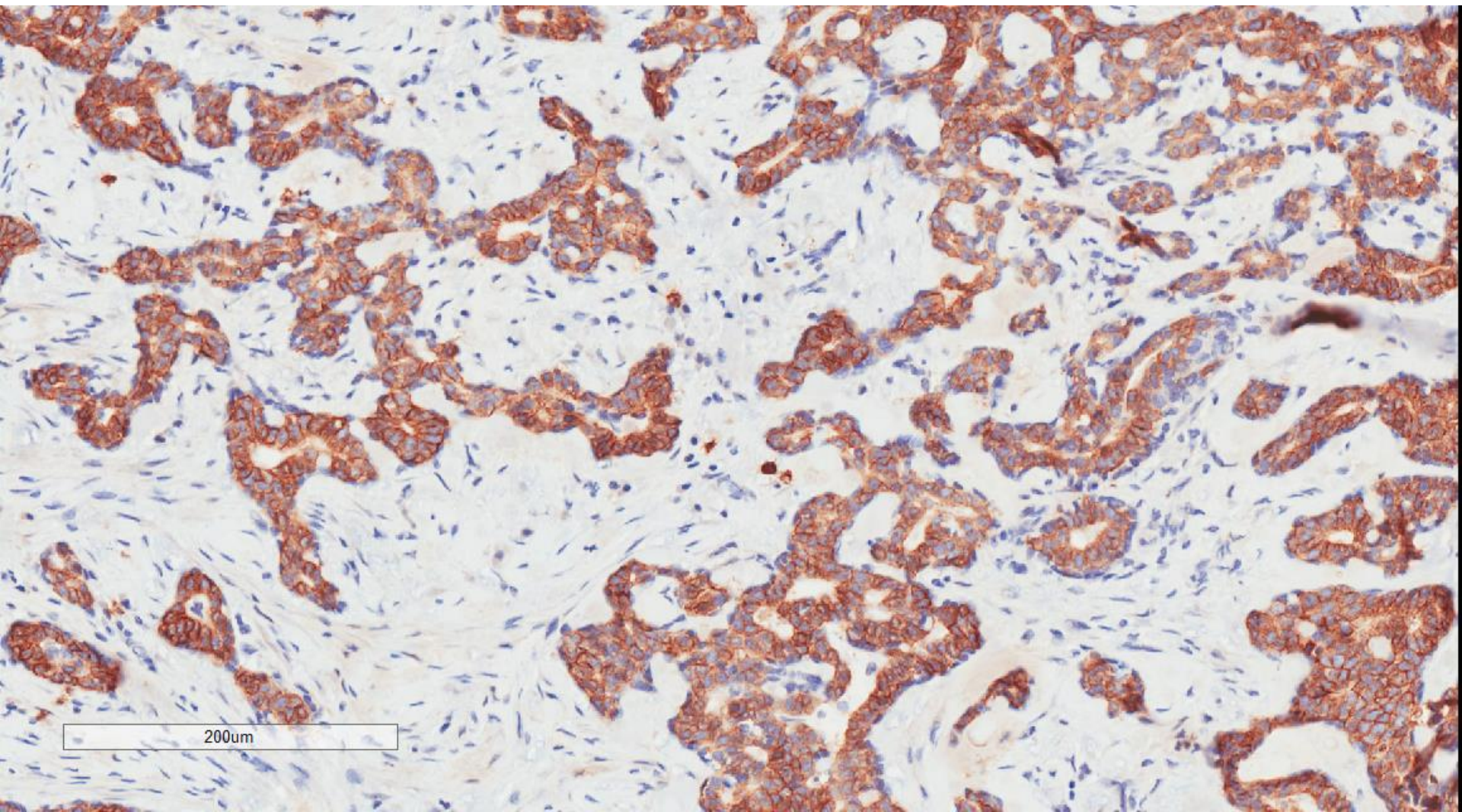


CD117



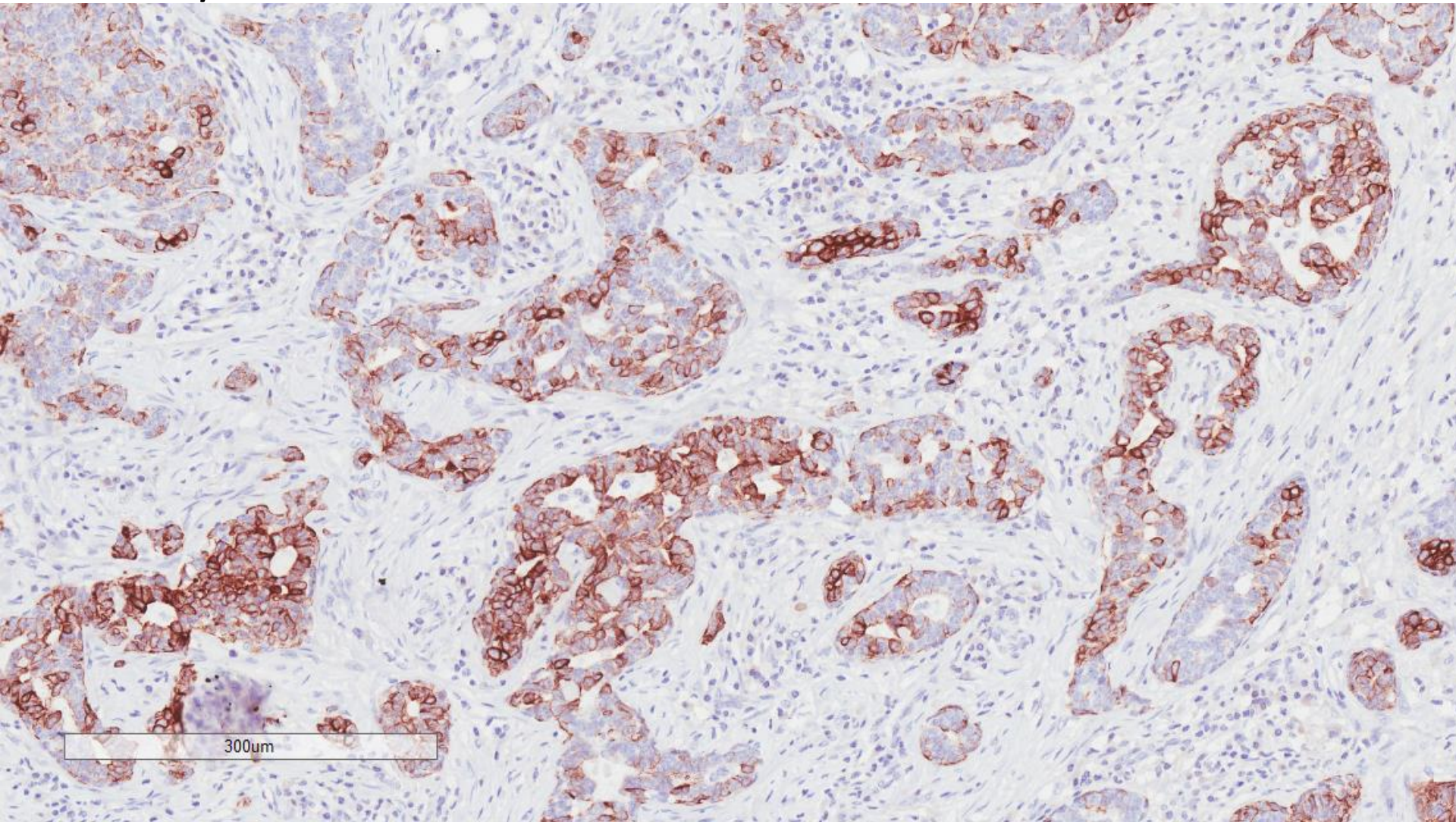


# CD117



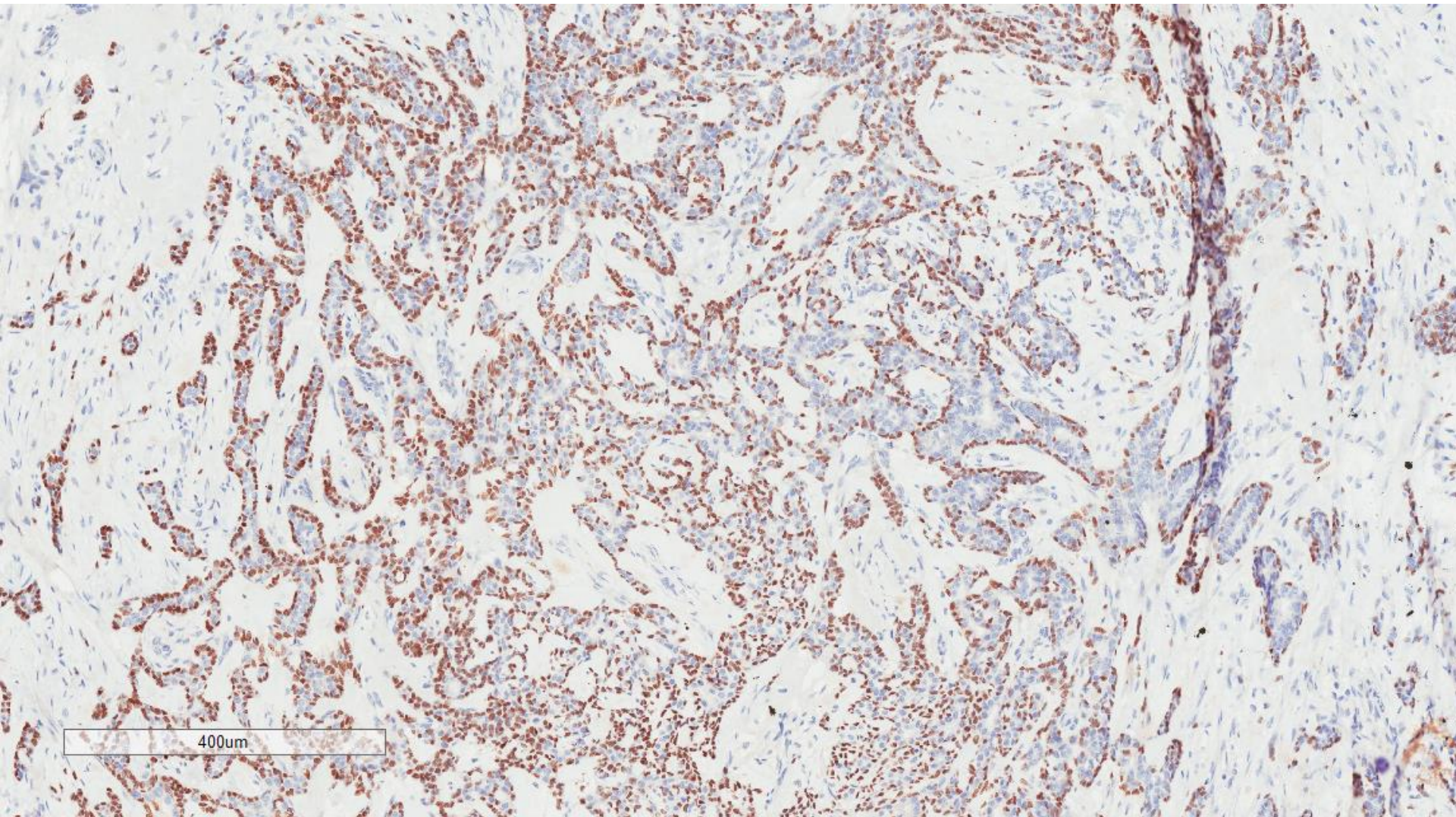


CK5/6



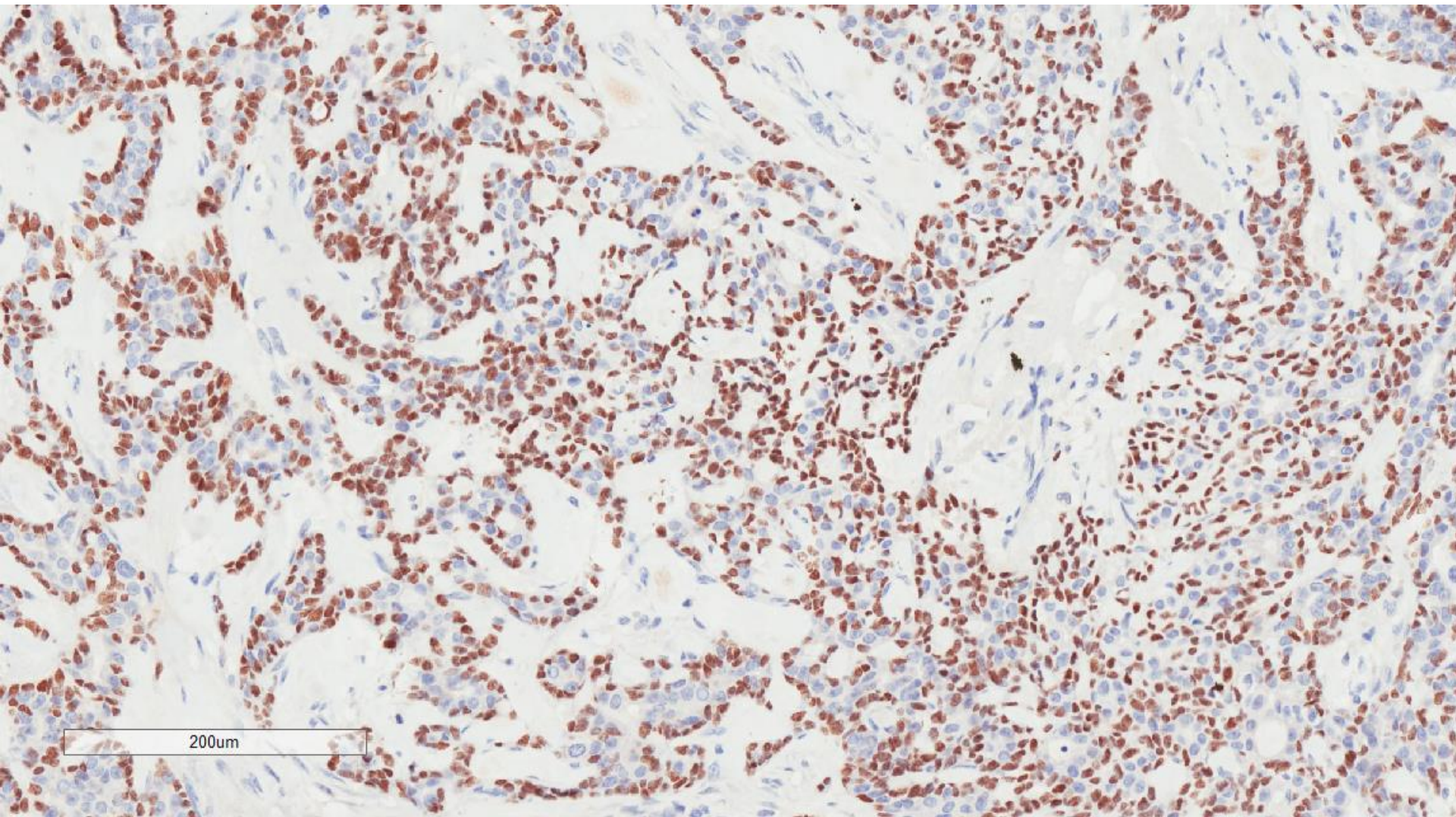


p63

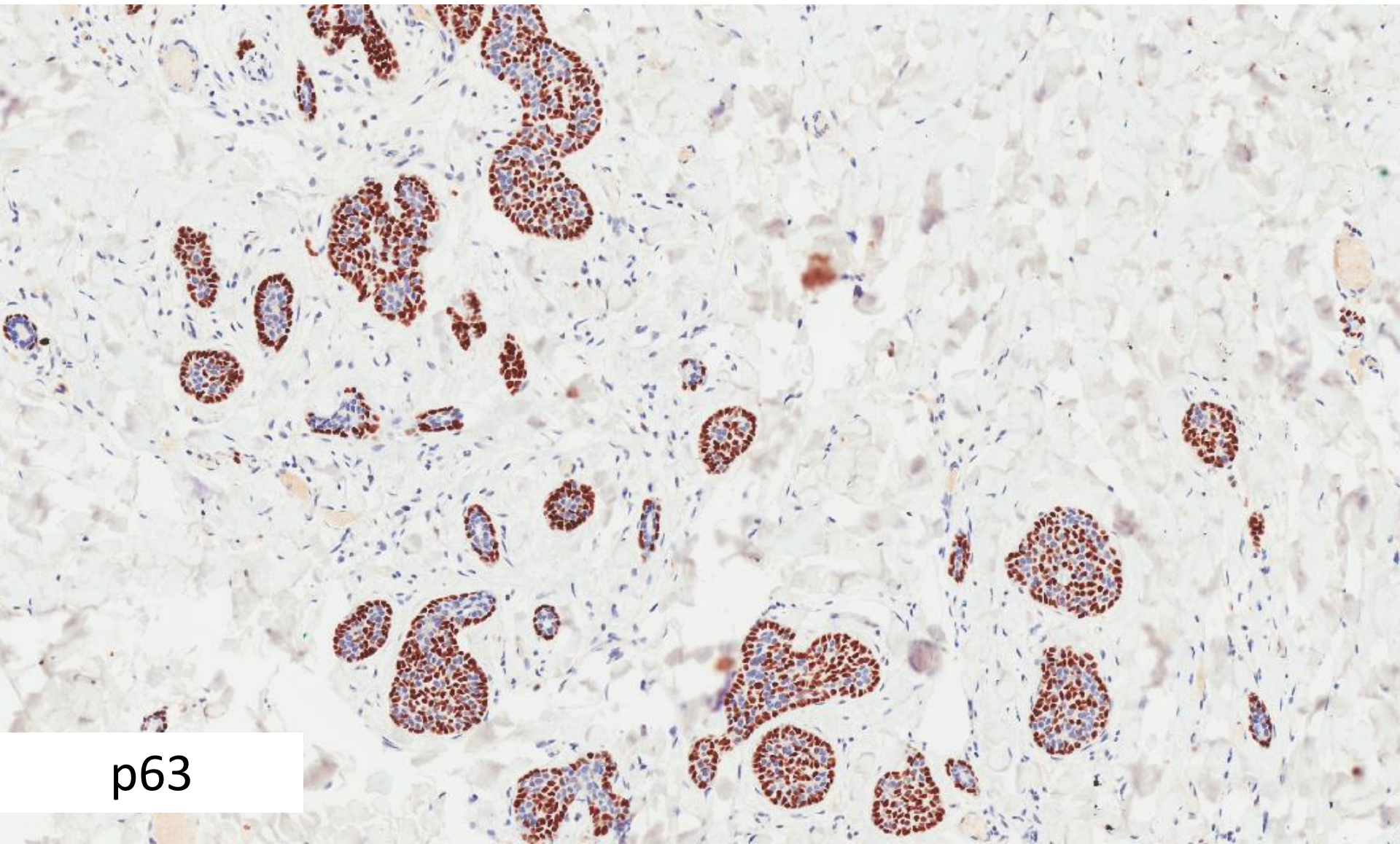




p63







p63



Invasive breast carcinoma with  
adnexal/salivary gland-like features, with  
syringoid and adenoid cystic  
components, 20 mm,  
ER negative, PR negative, cerbB2  
negative