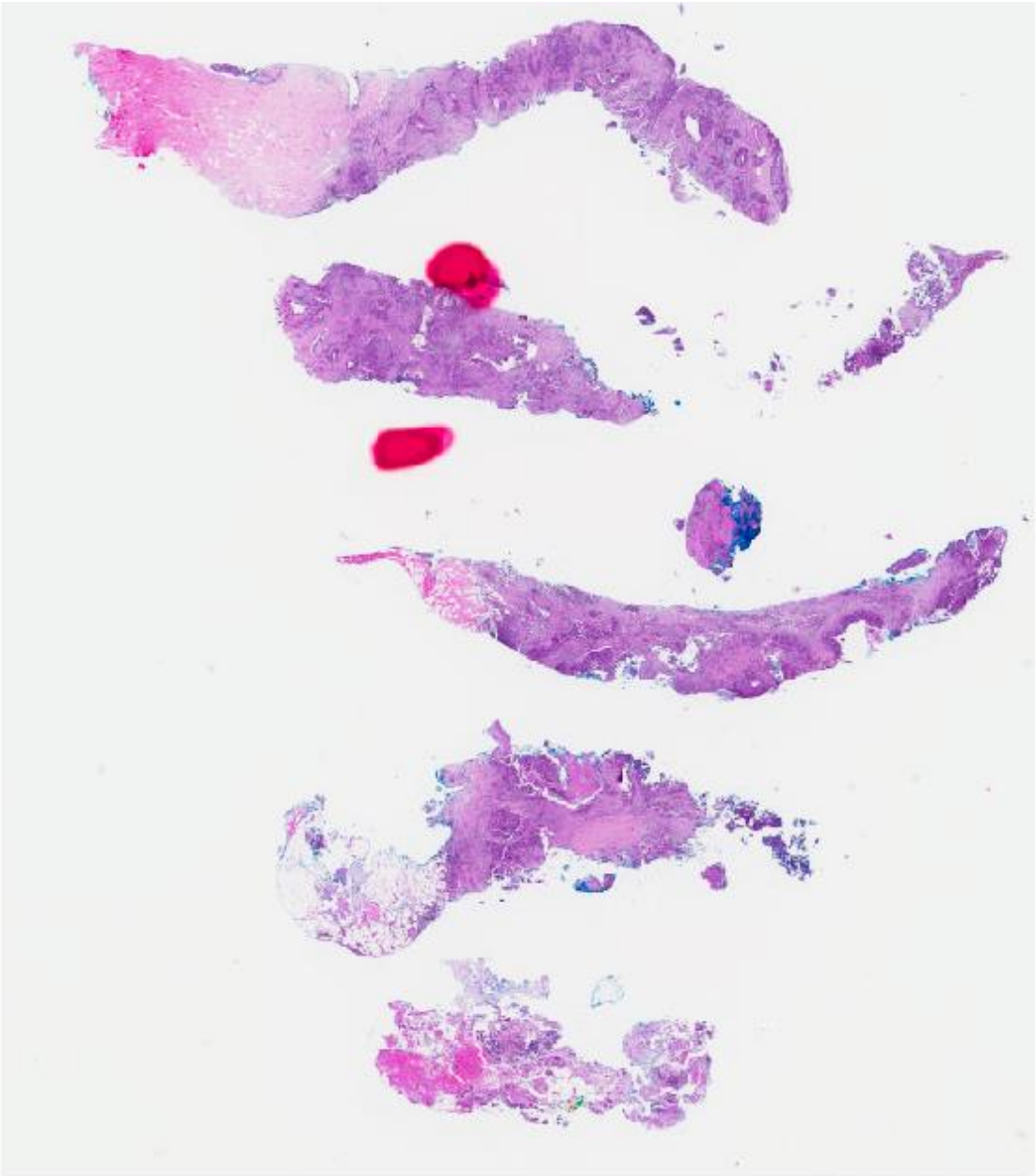


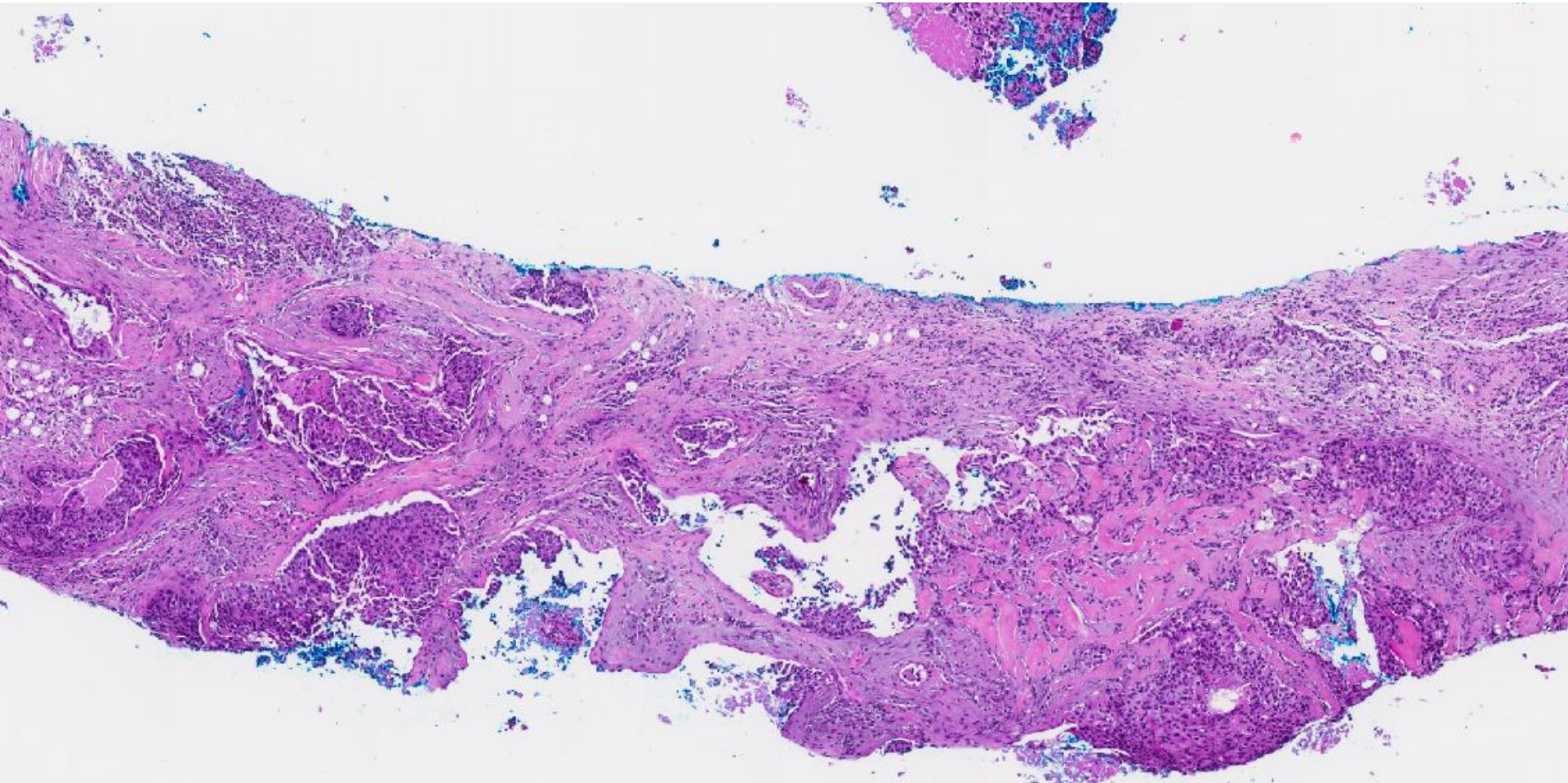
## Case 7

49 year old lady underwent mastectomy after a trucut core biopsy confirmed malignancy of a right breast mass.

Section is from the core biopsy.

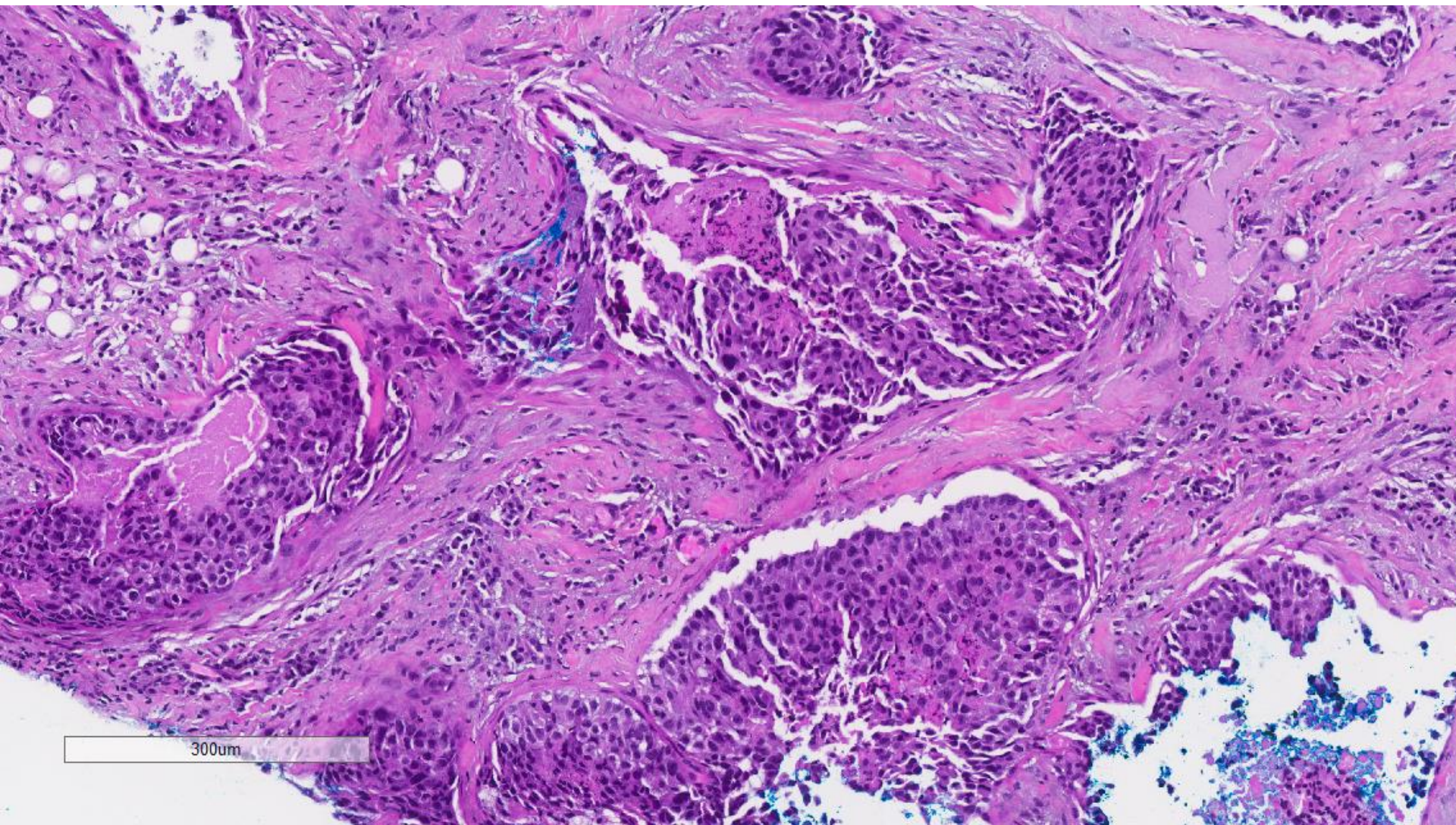


5mm



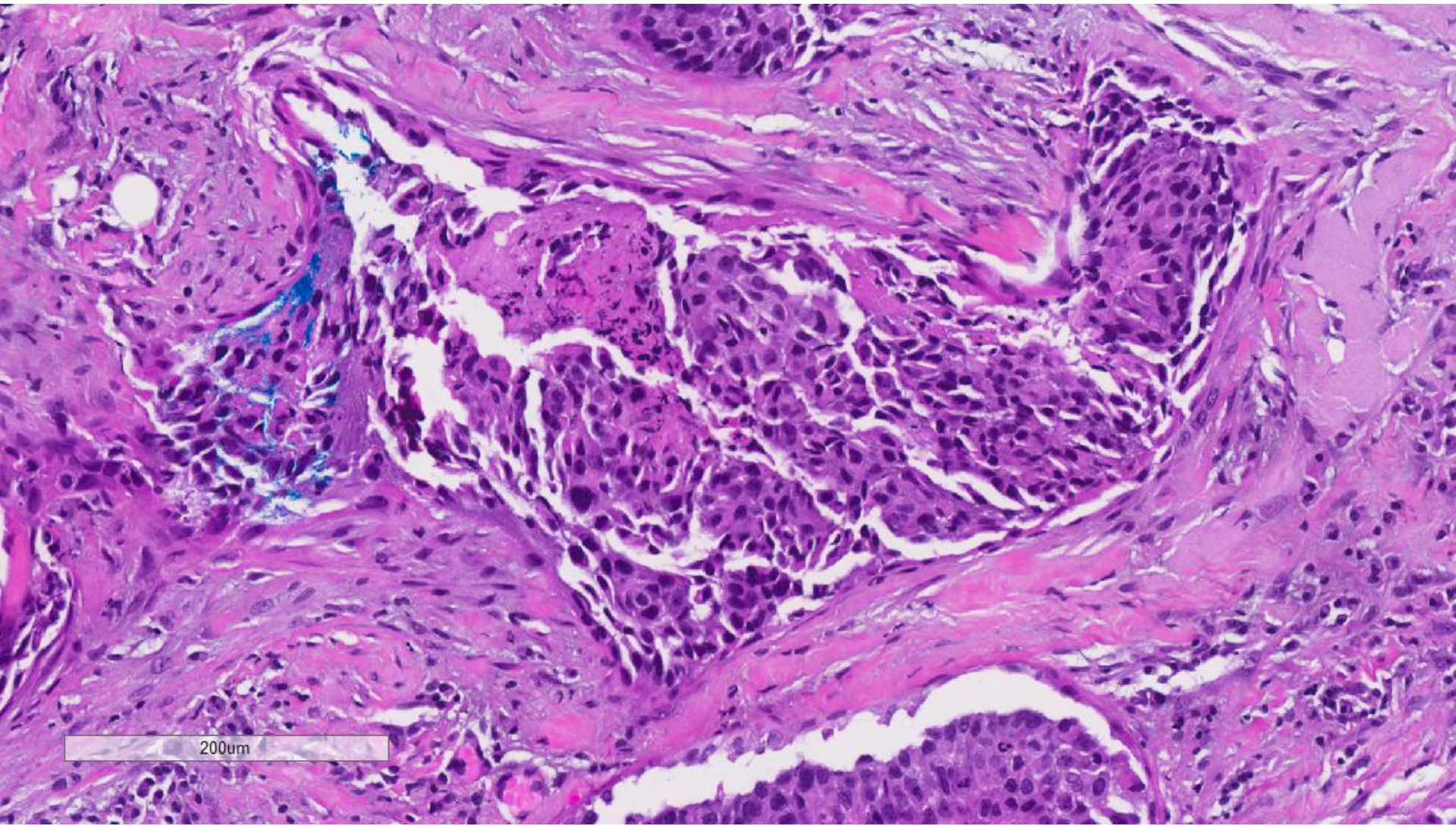
700um





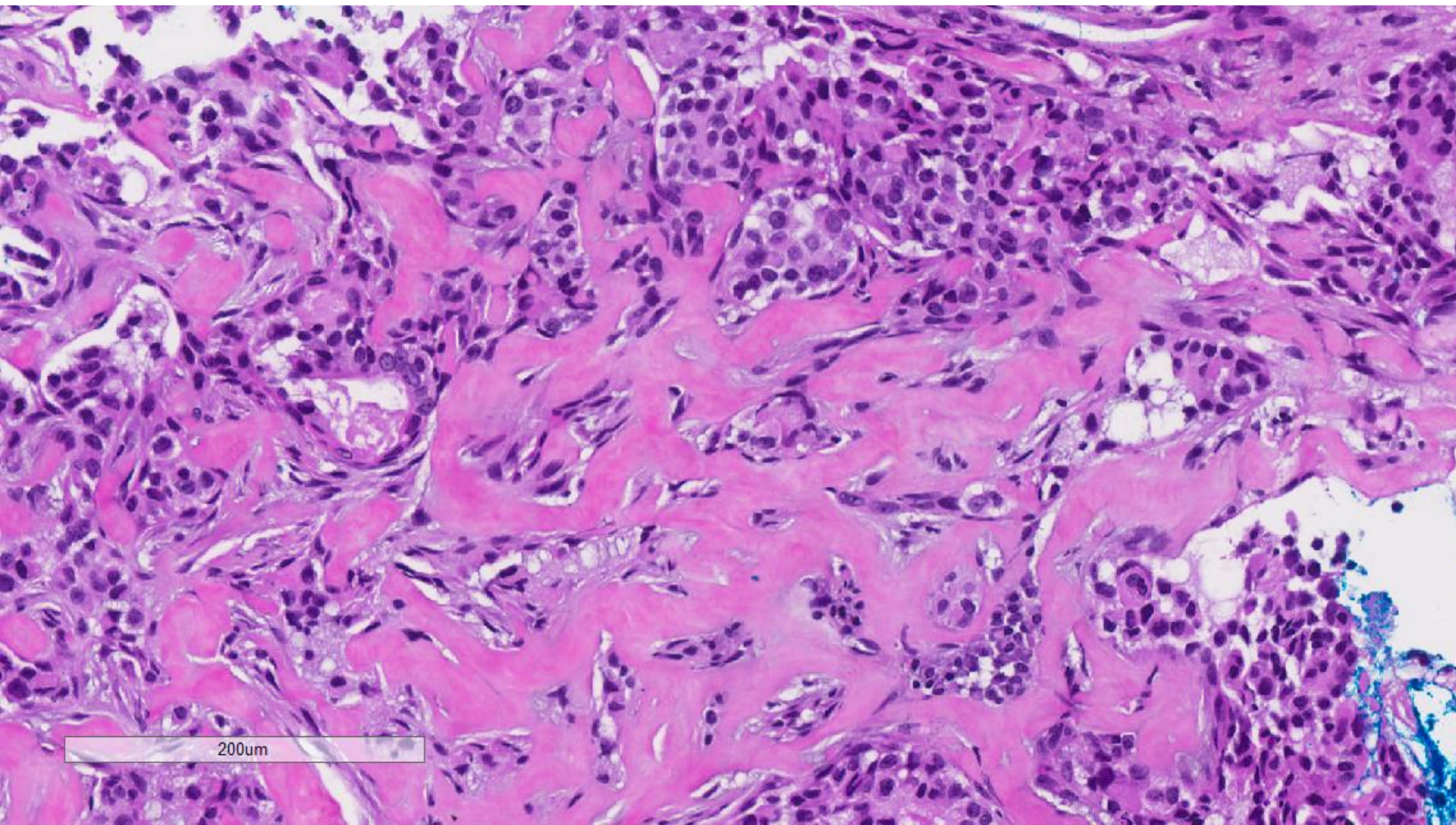
300µm





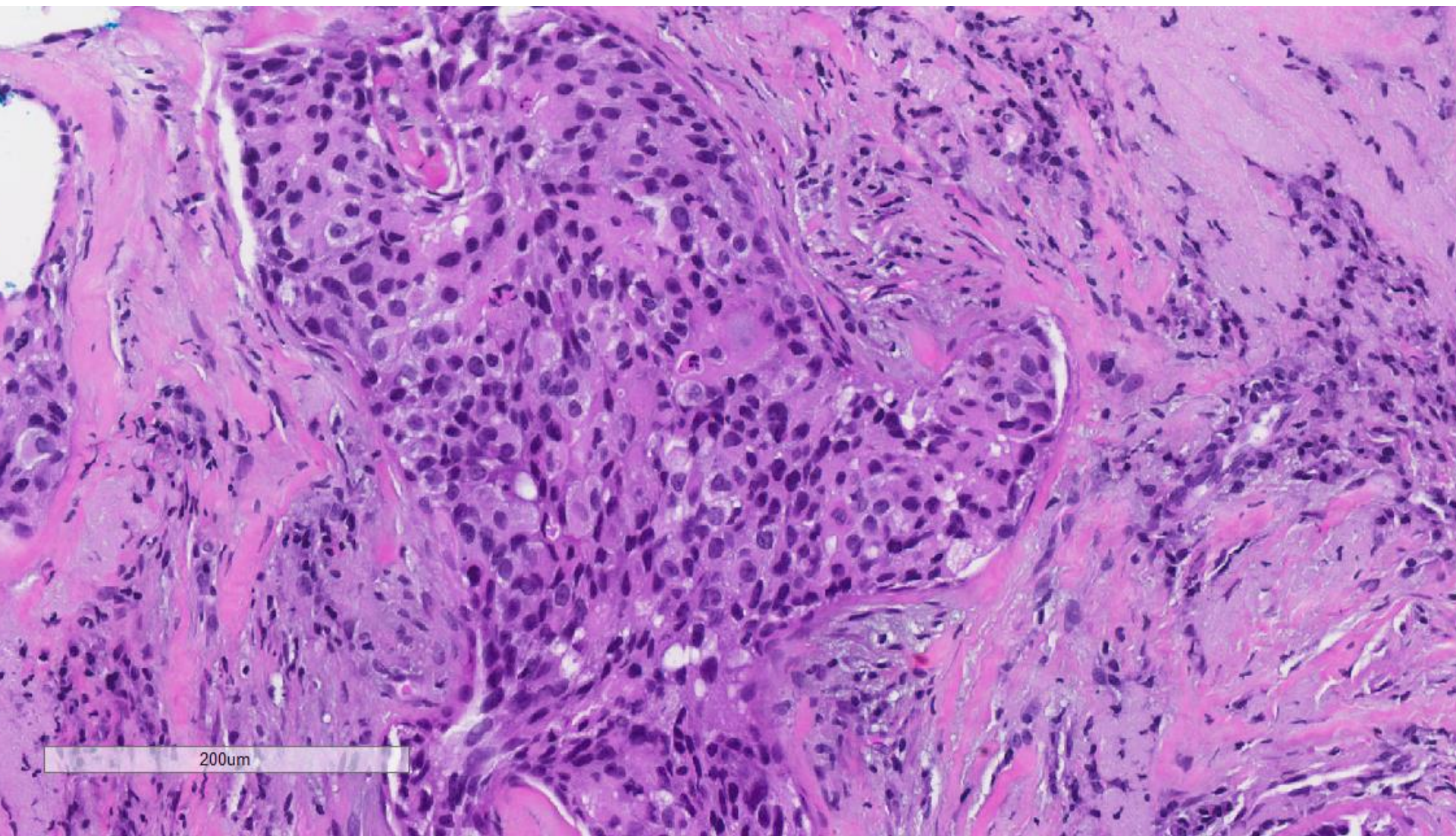
200um





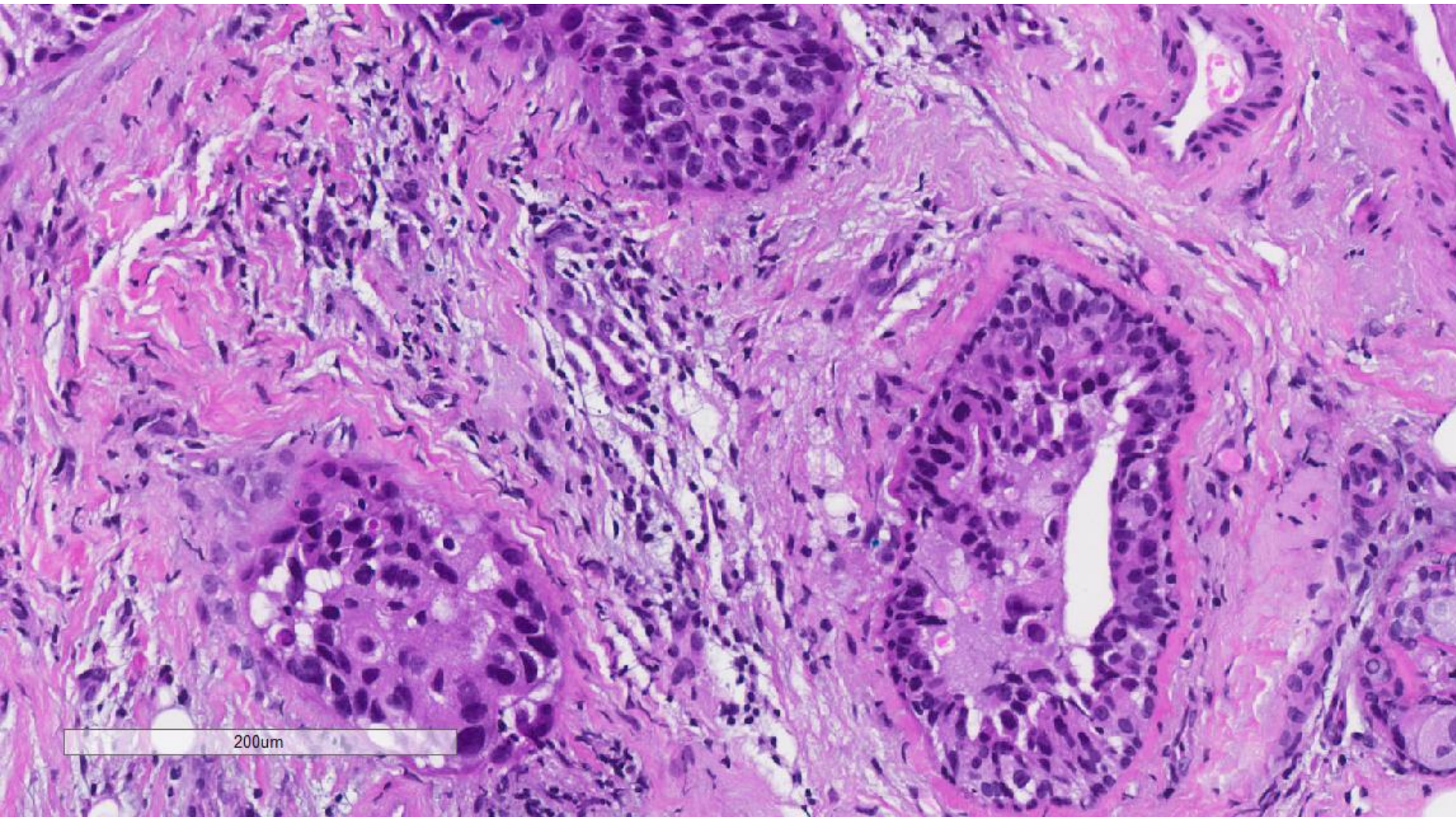
200um





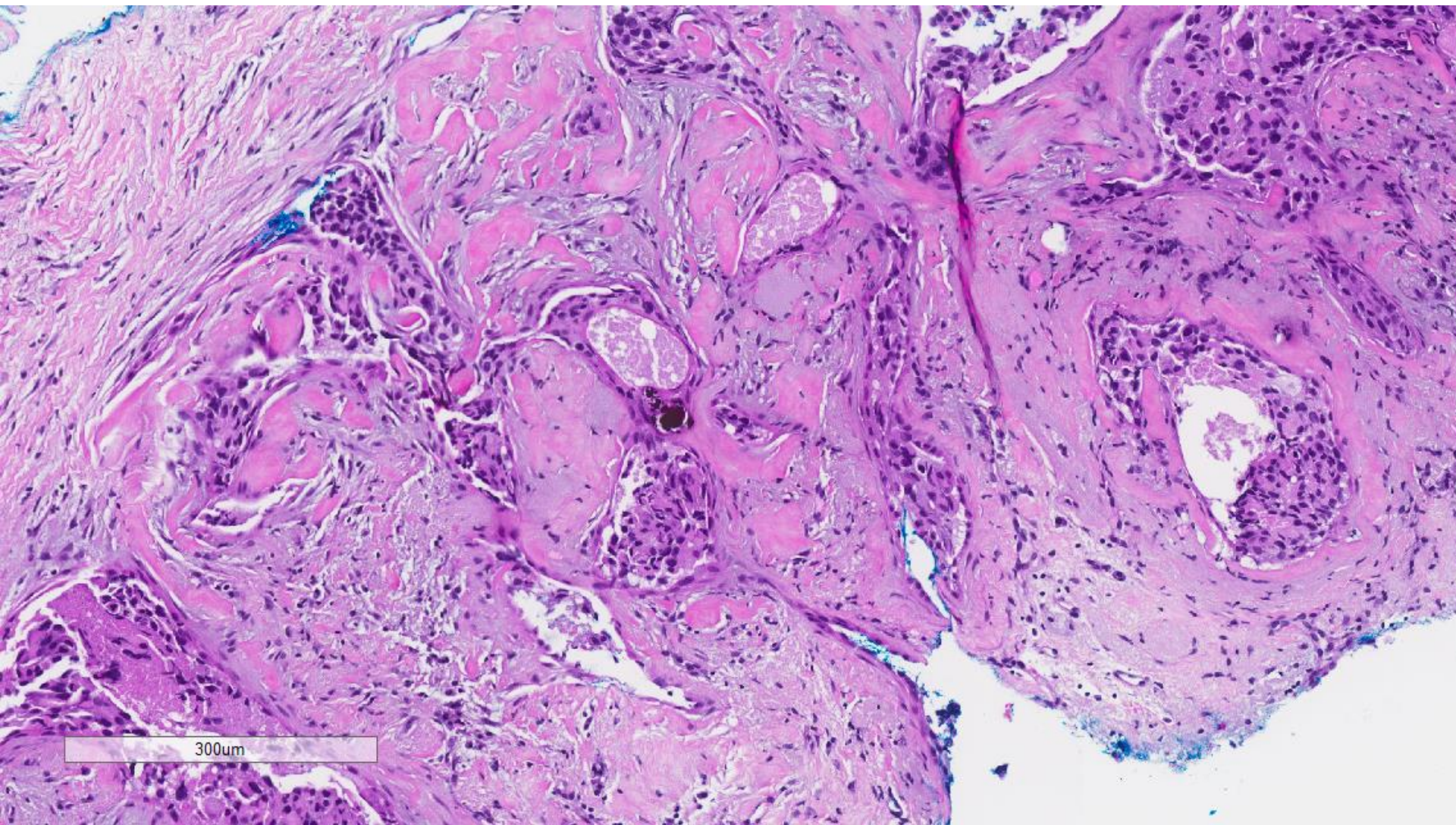
200µm





200um

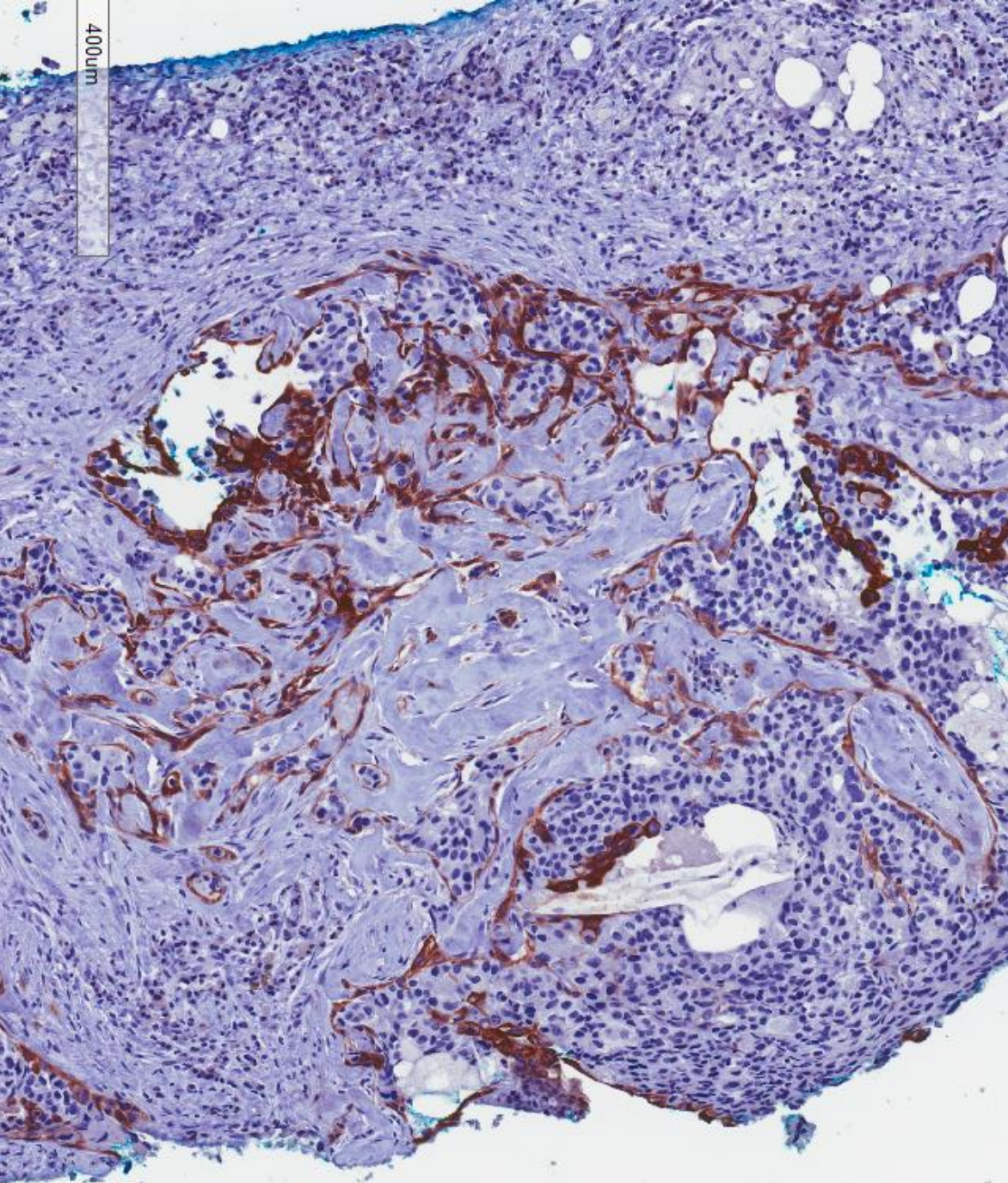




300µm

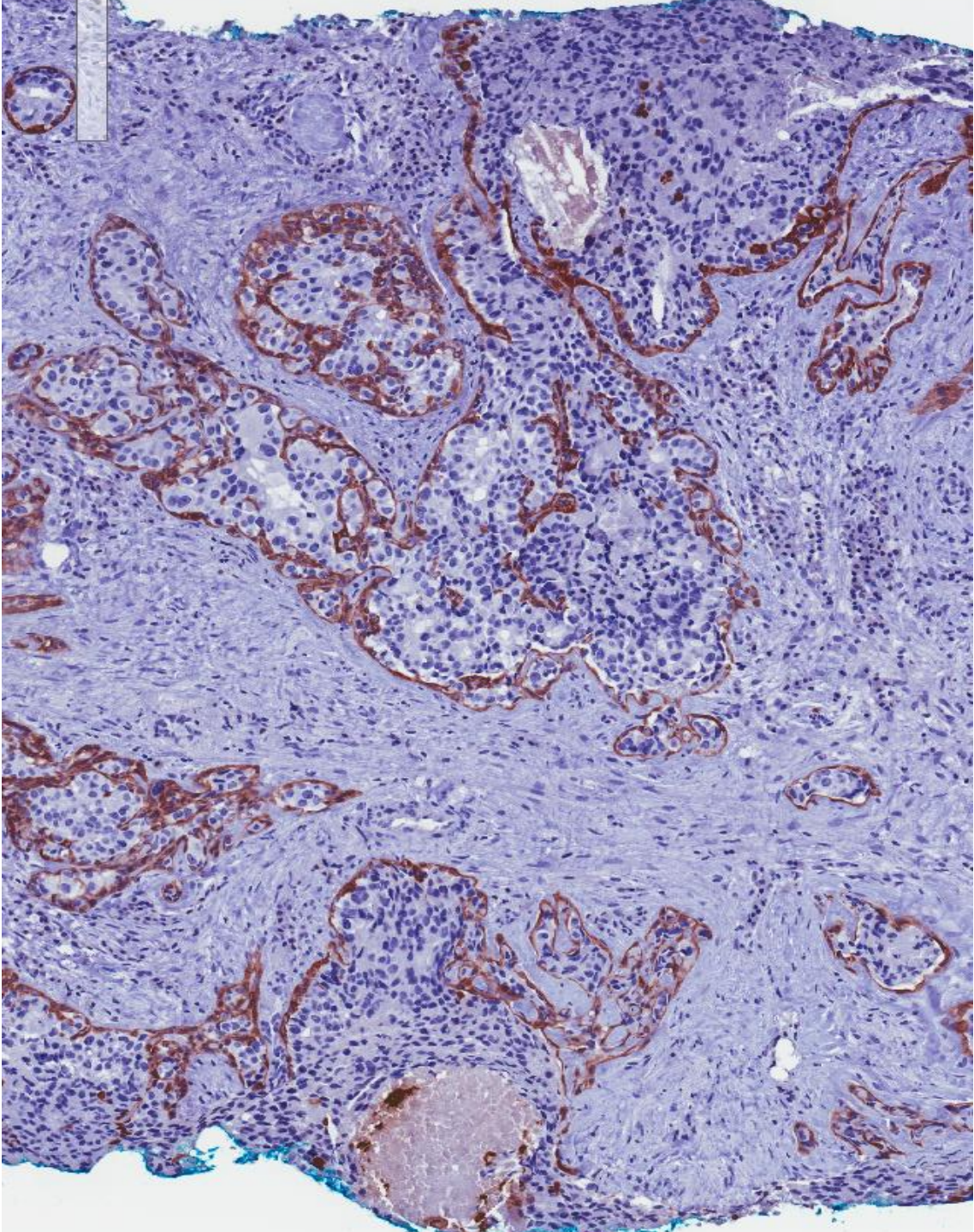


CK5/6



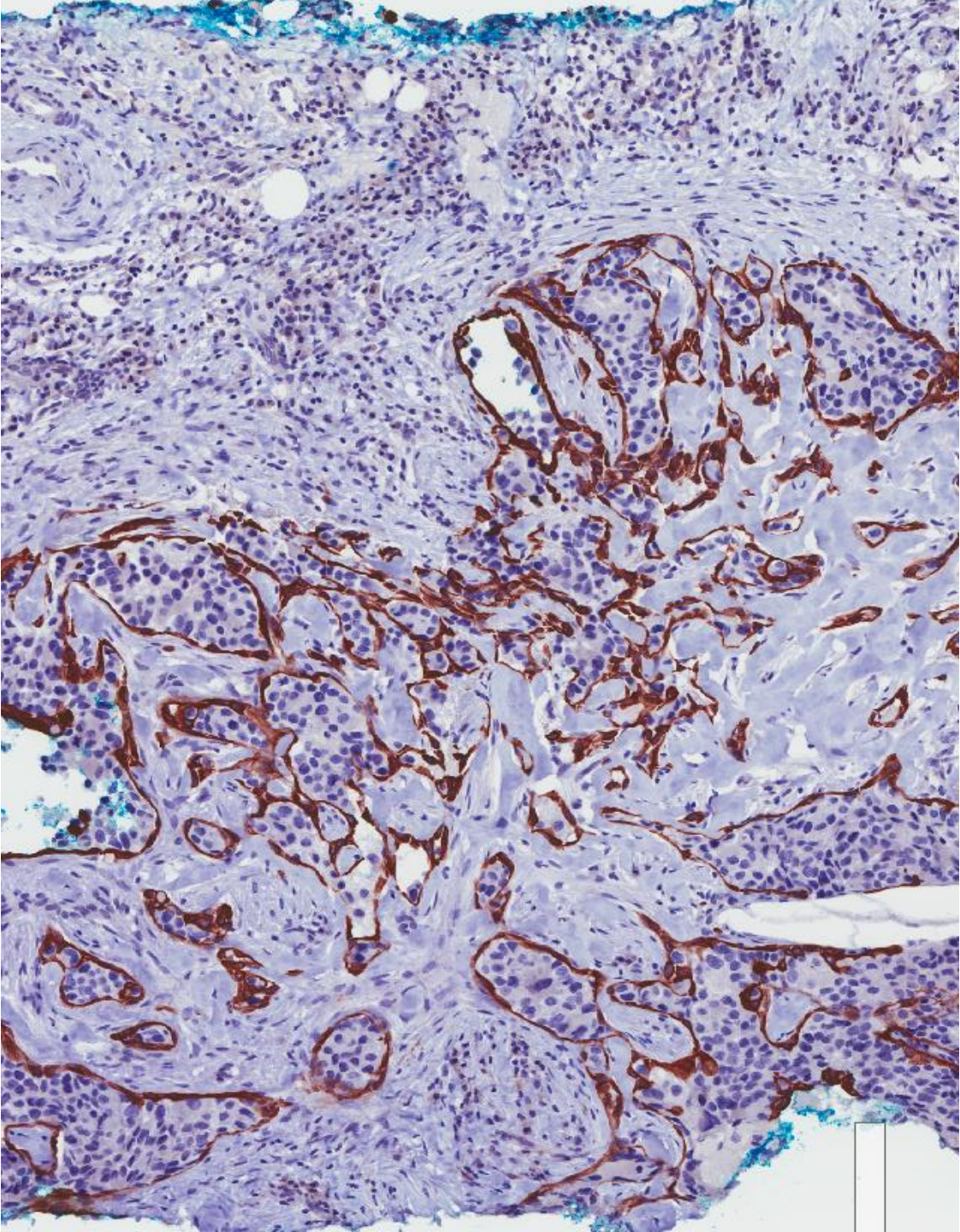


CK5/6



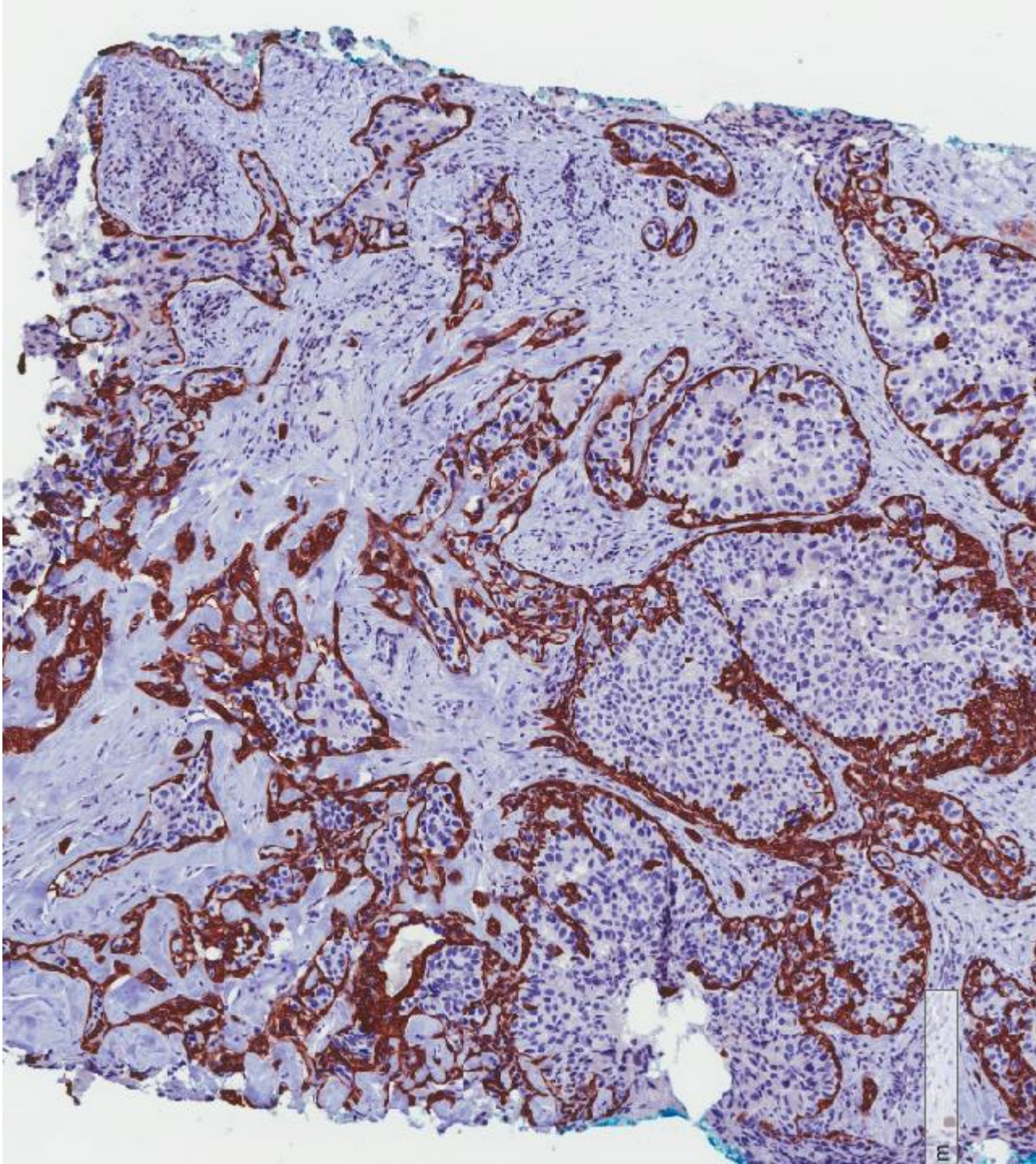


CK14



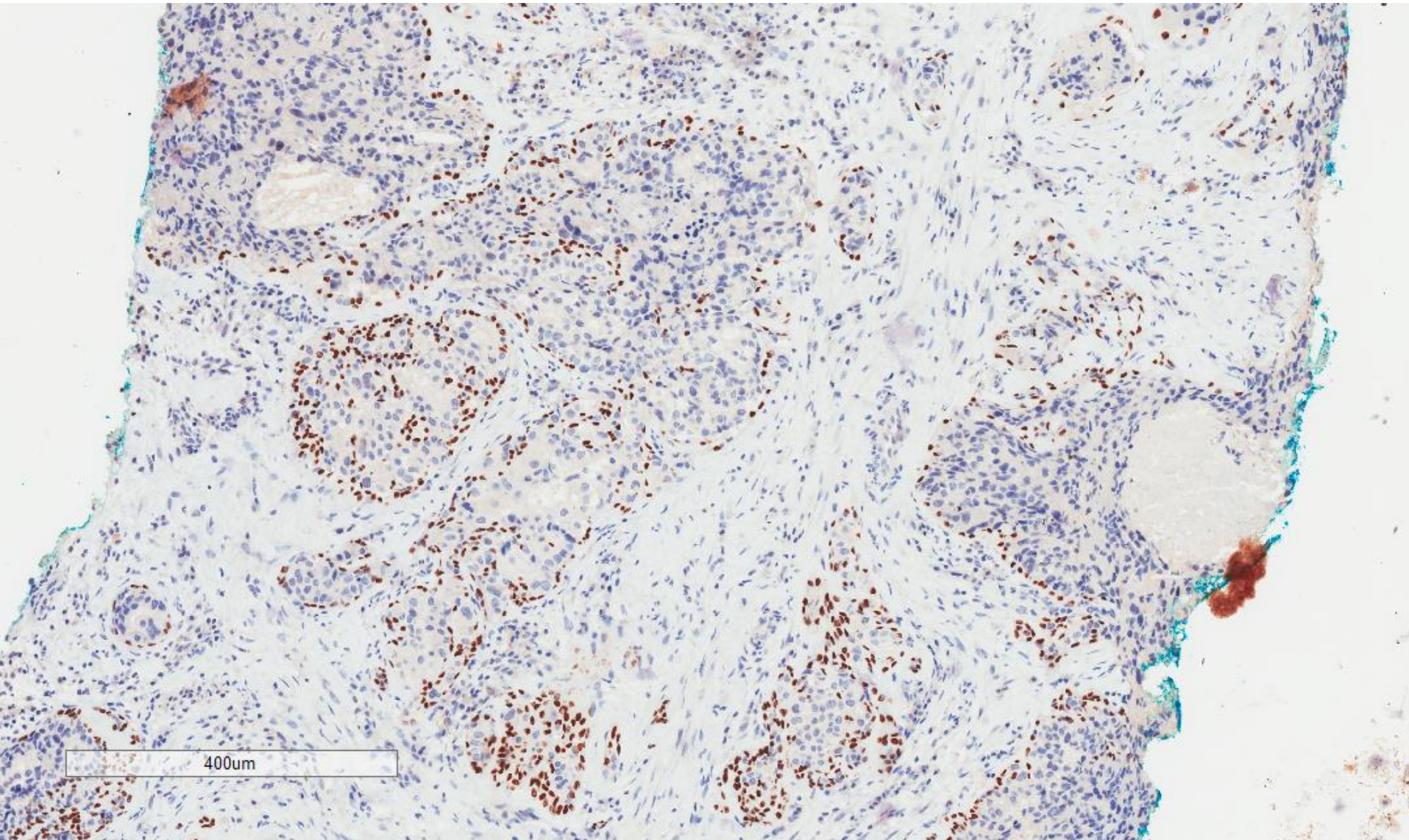


CK14



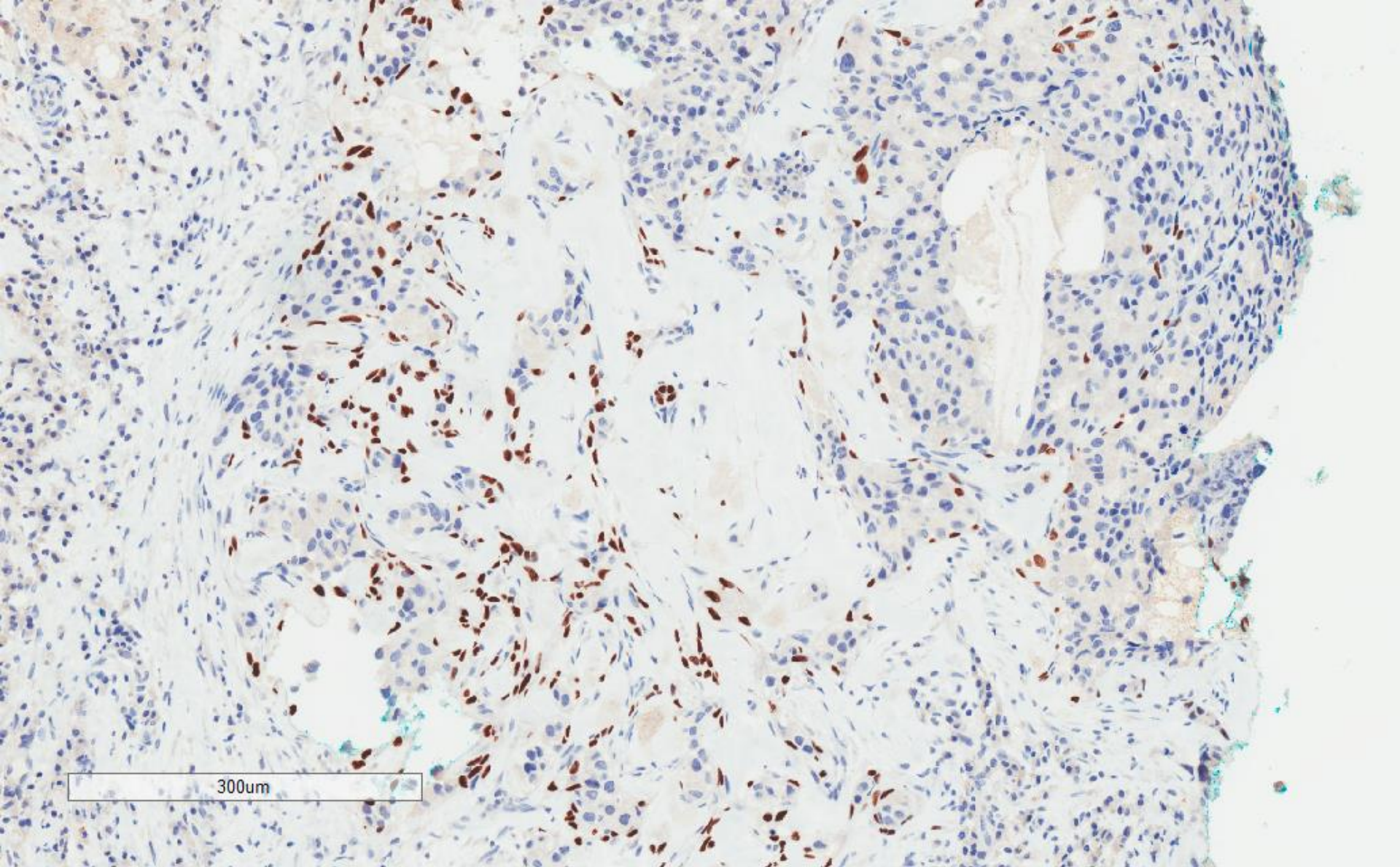


p63





p63





High nuclear grade ductal carcinoma in situ, with necrosis and calcifications, superimposed on underlying sclerosing adenosis  
*(initially diagnosed as invasive and in situ ductal carcinoma)*



# Subsequent mastectomy

- Small focus of invasive ductal carcinoma 3.5mm.
- Extensive ductal carcinoma in situ, high nuclear grade with necrosis and calcifications.