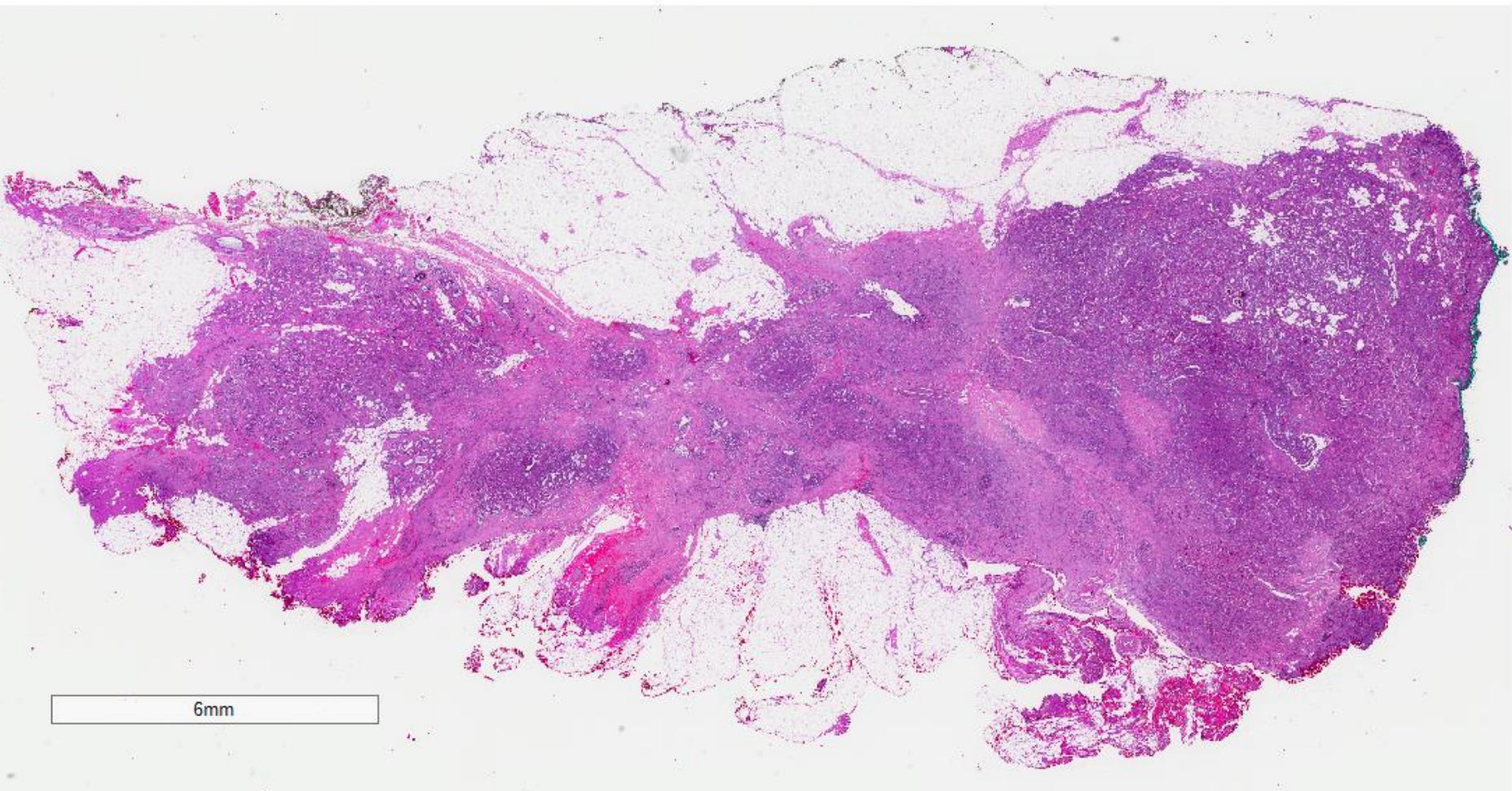


Case 5

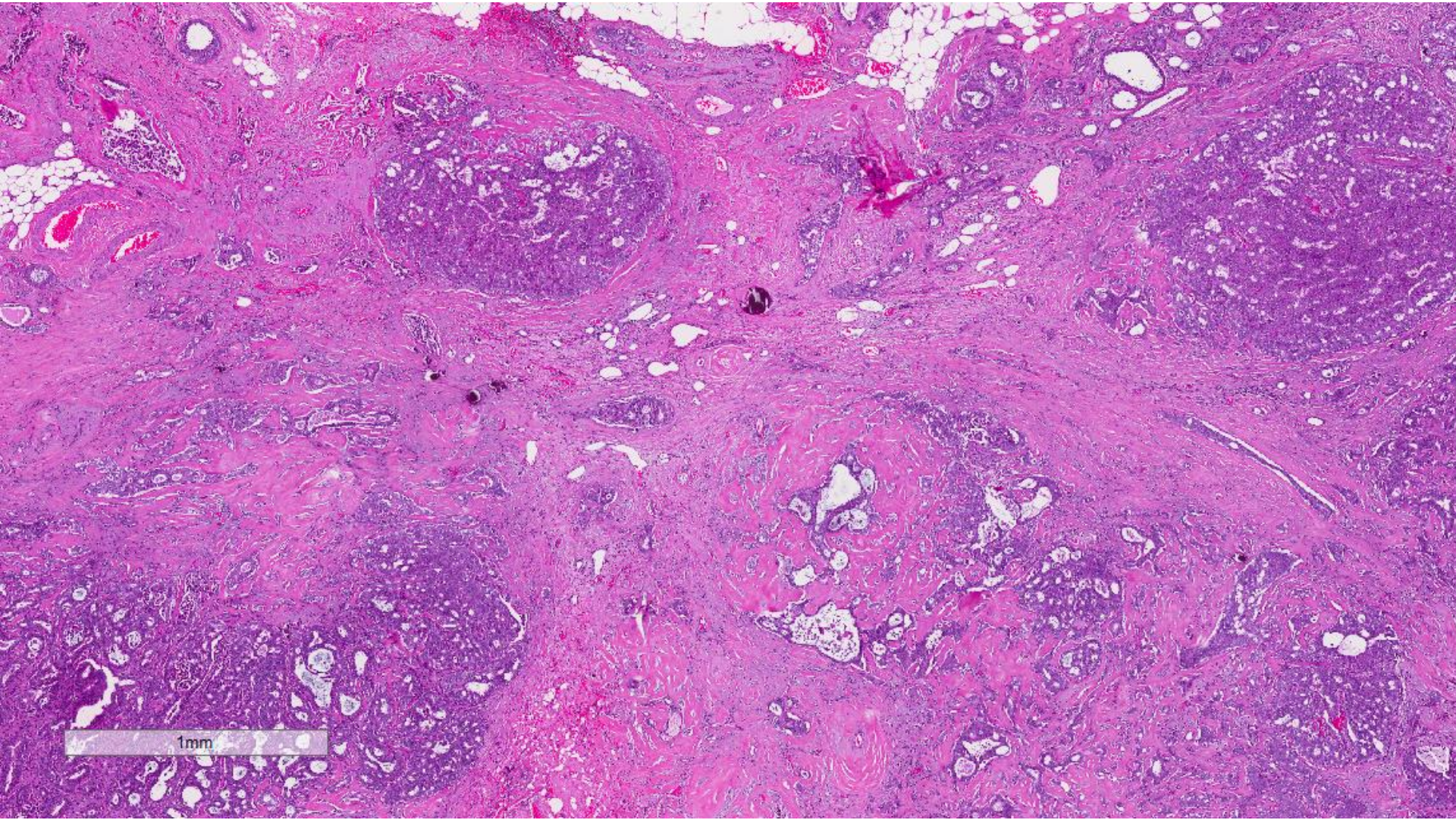
47 year old lady was discovered to have bilateral architectural distortions and calcifications on mammographic screening.

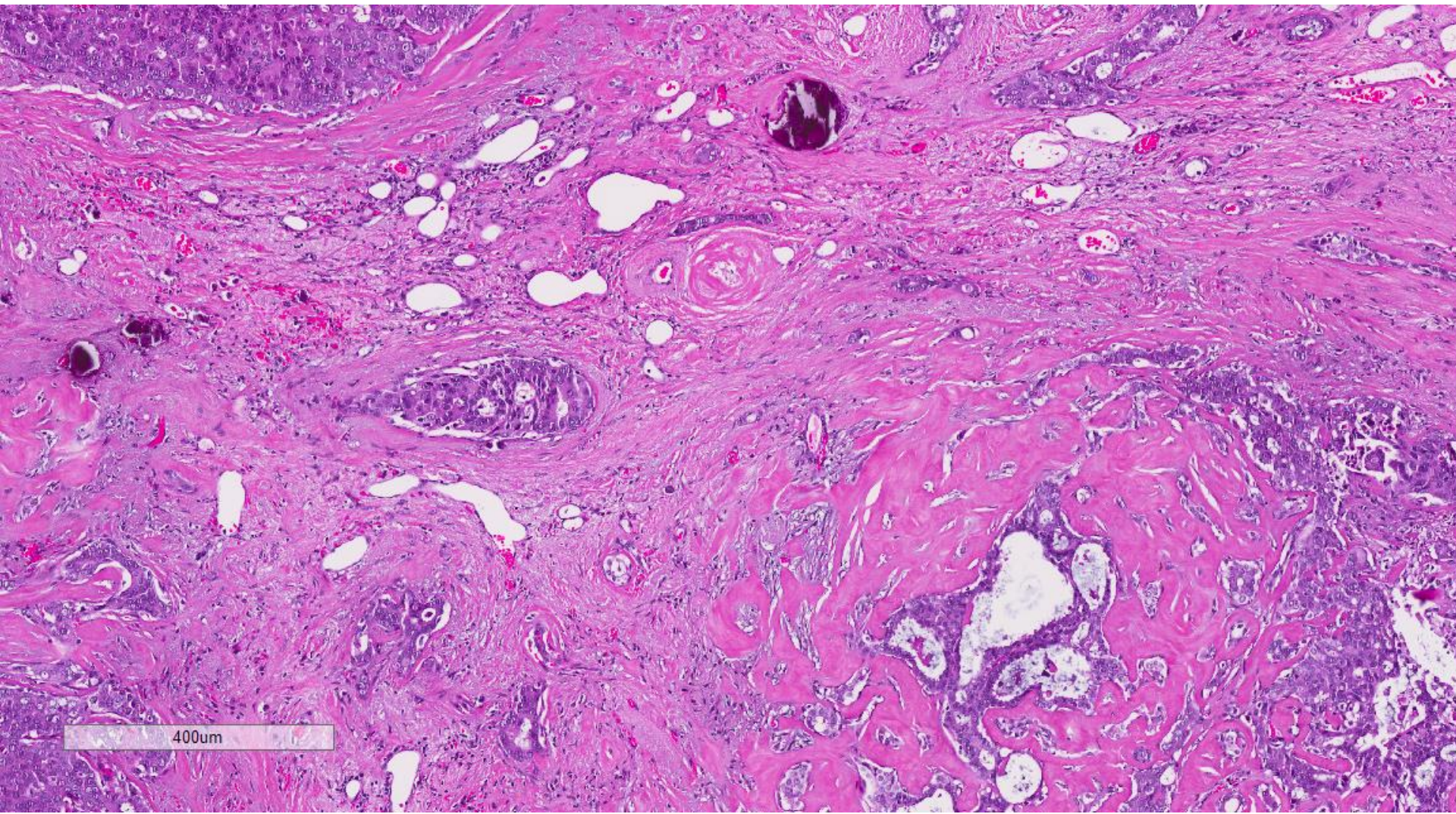
Hookwire localisation excision biopsies were performed.

Section is from the left breast.

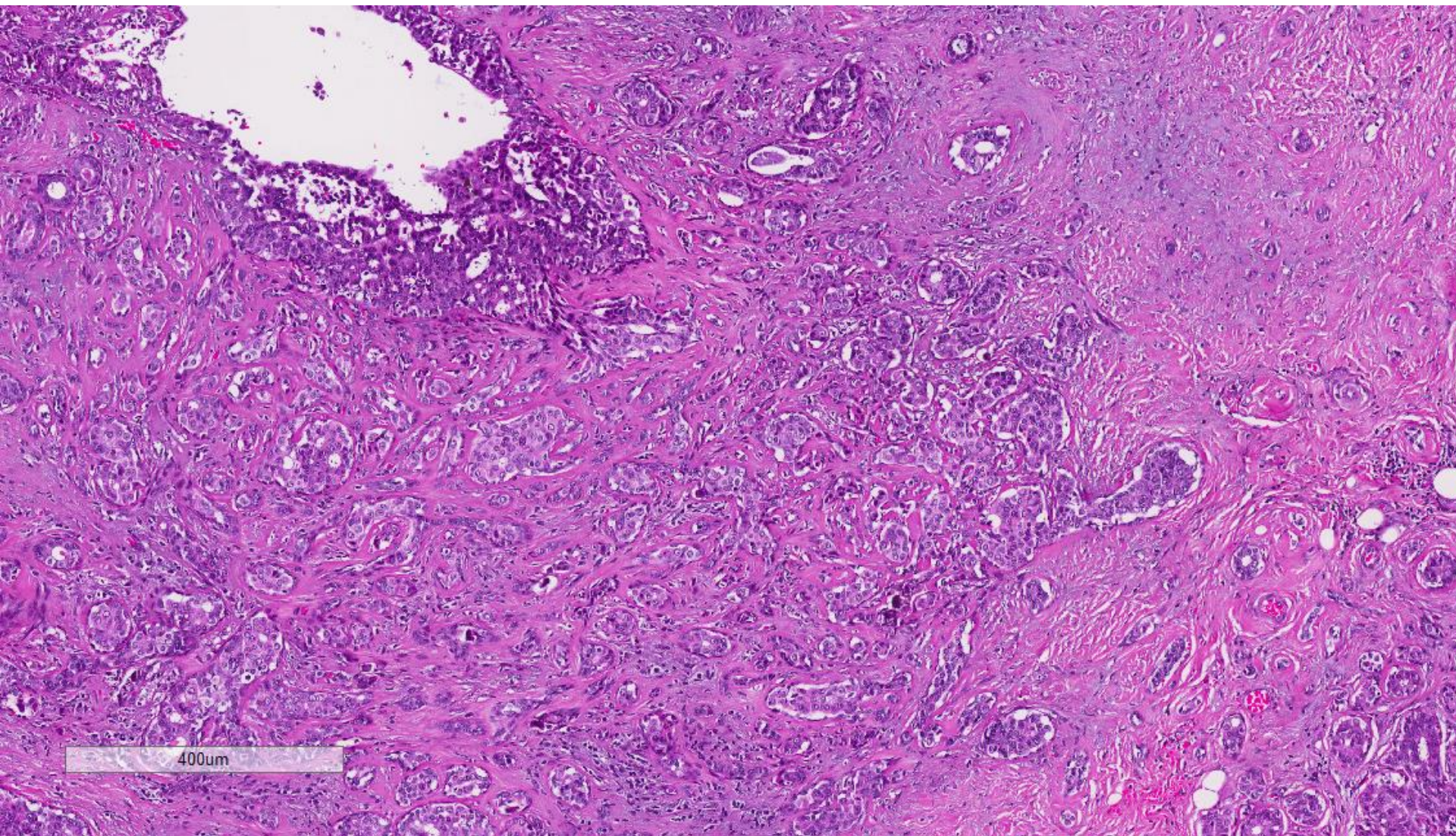


6mm

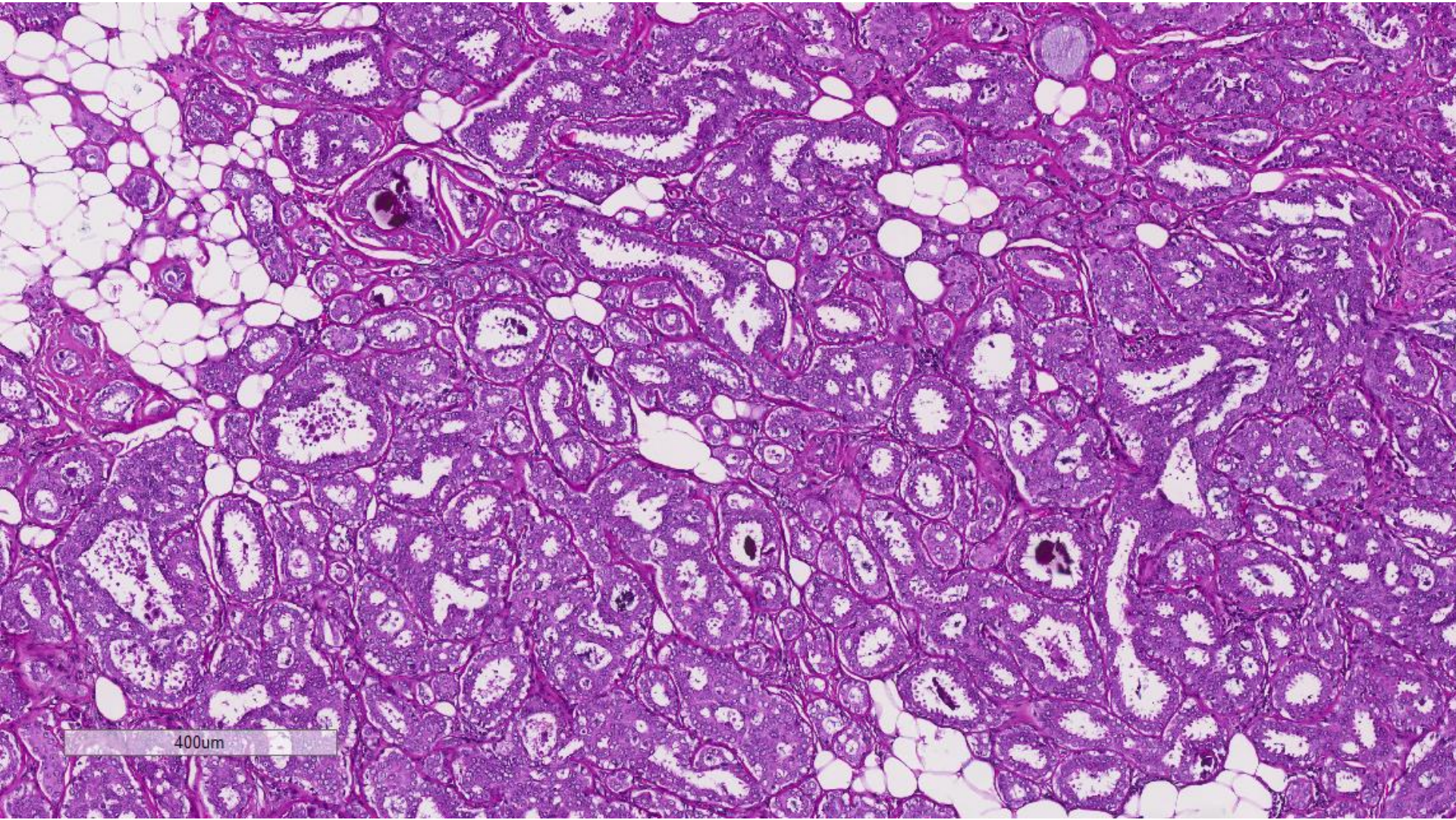




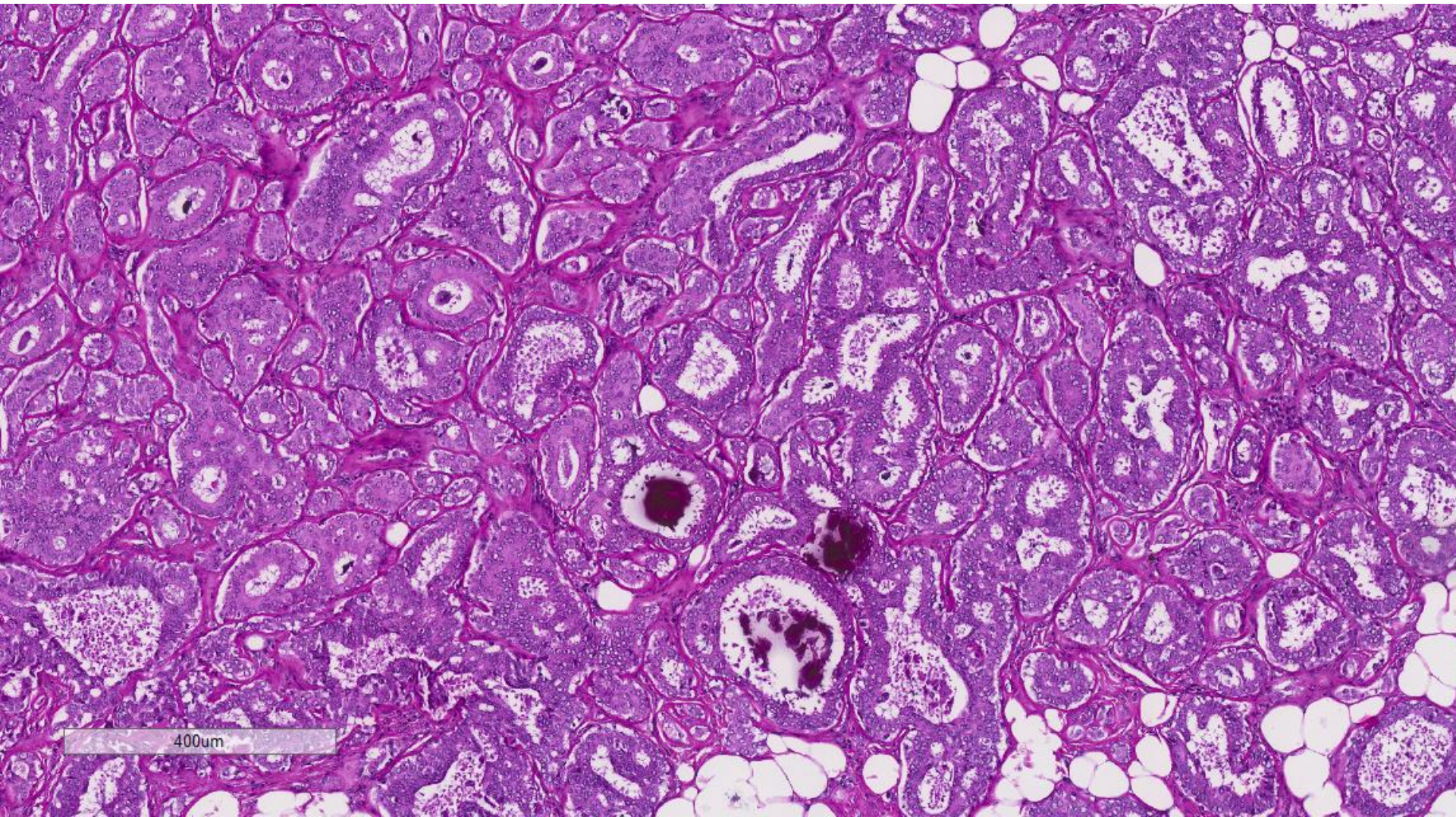
400um



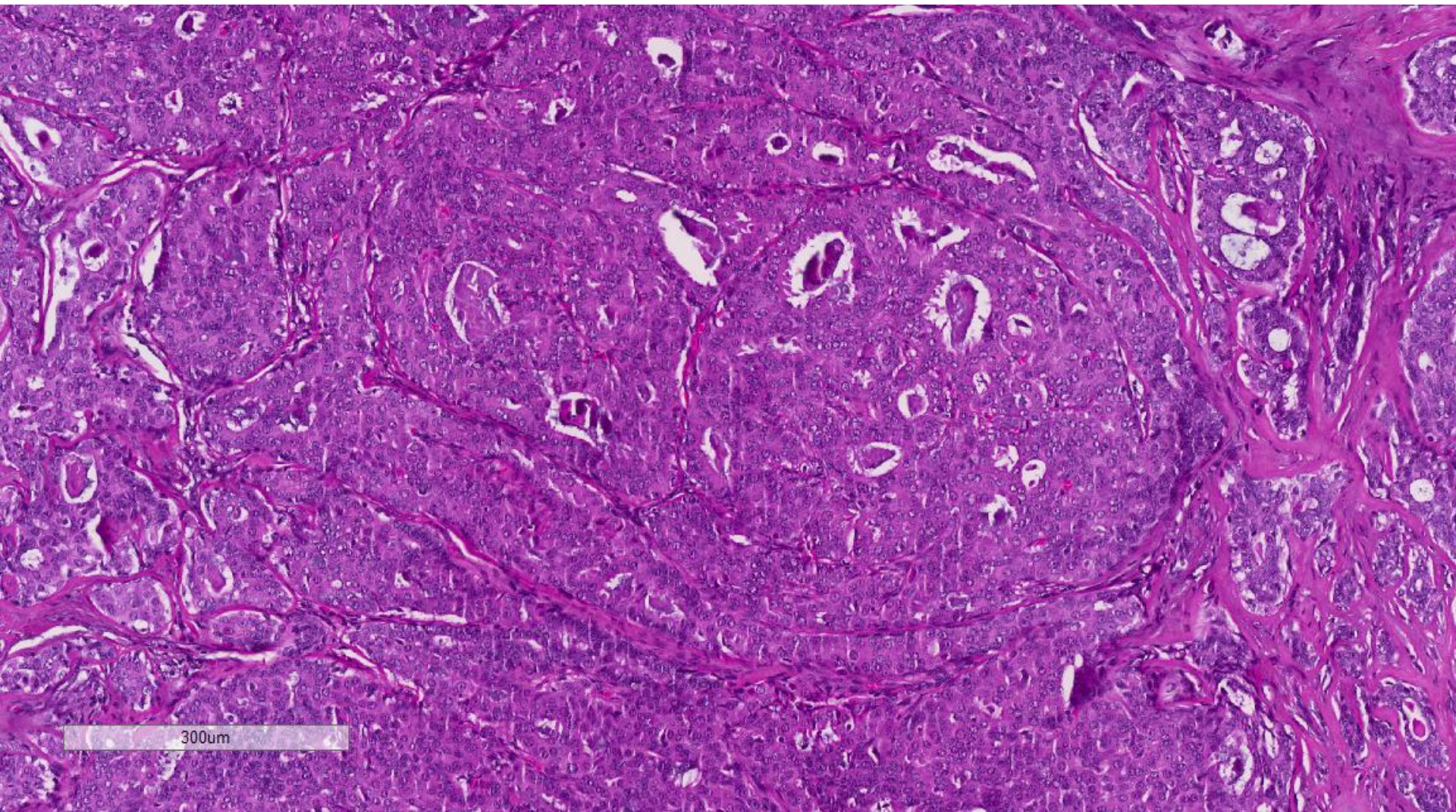
400um



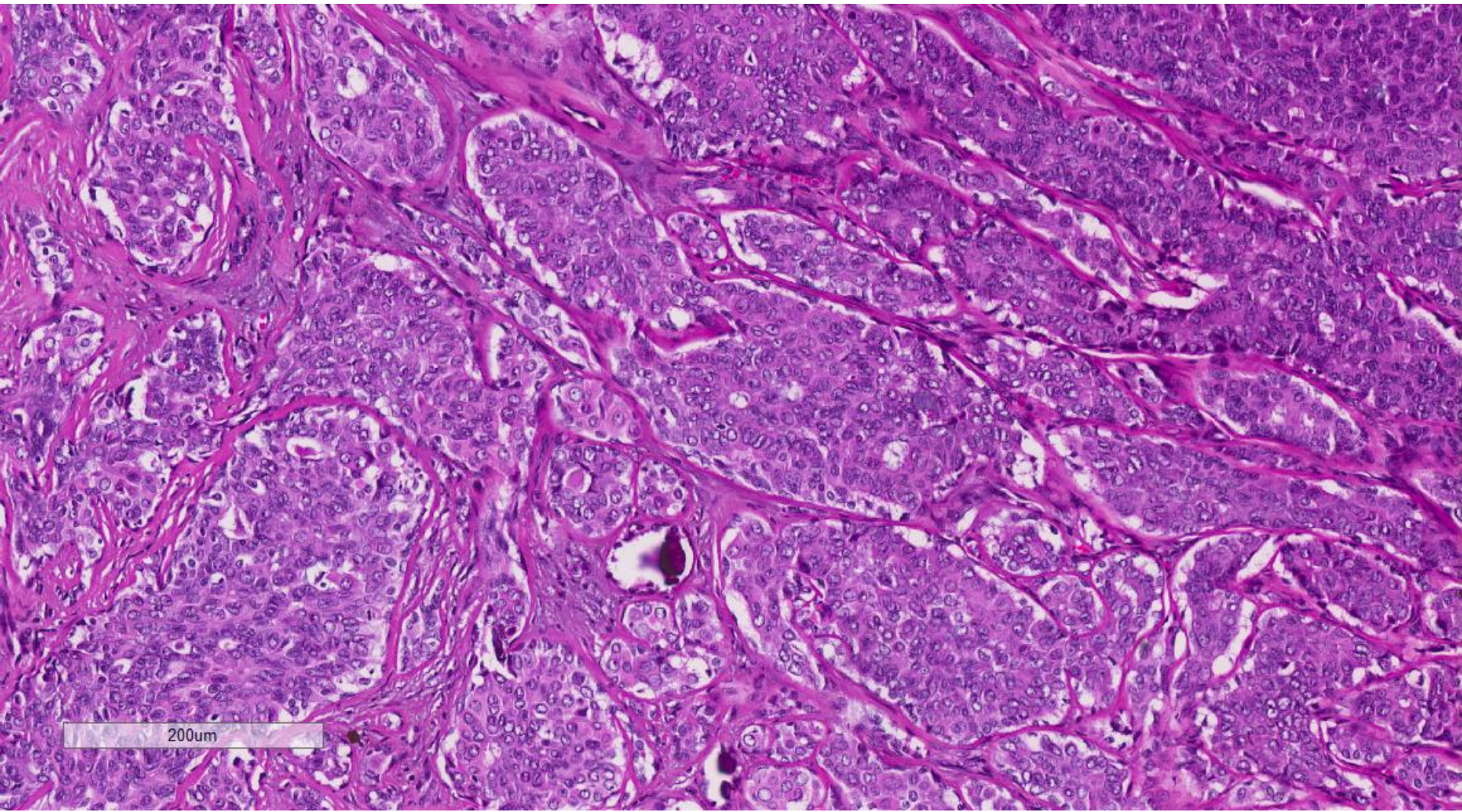
400µm



400um

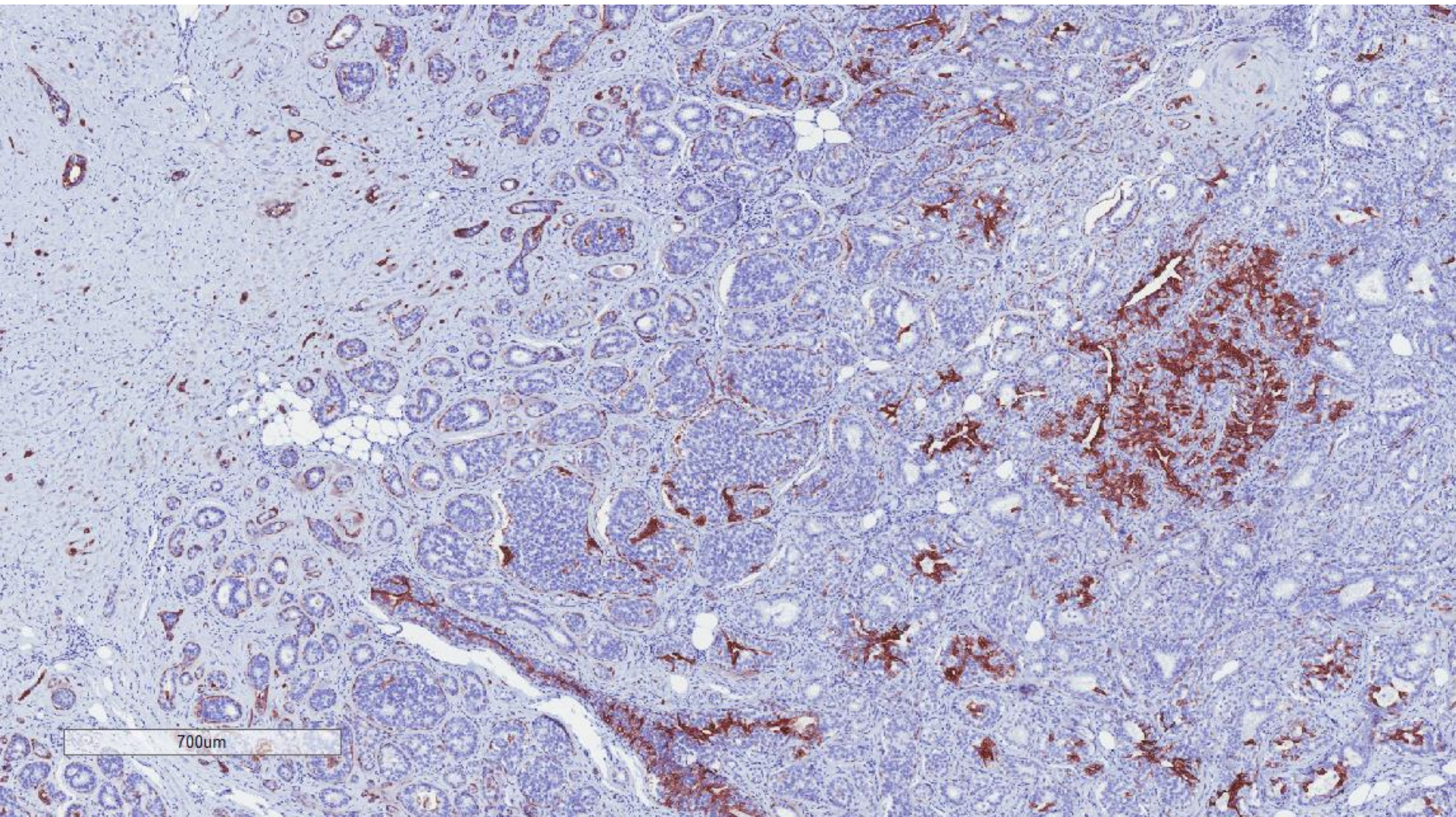


300um

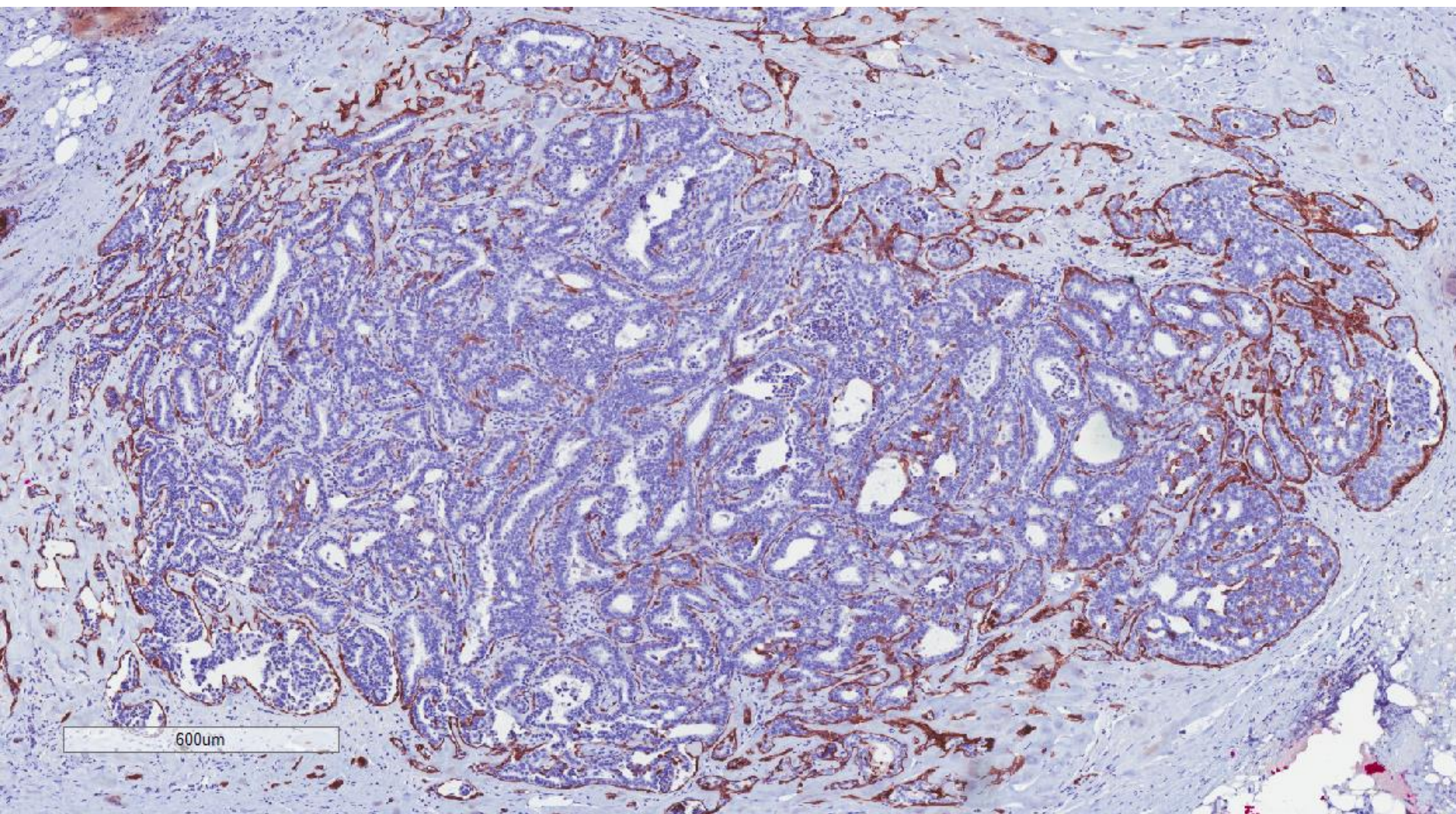


200um

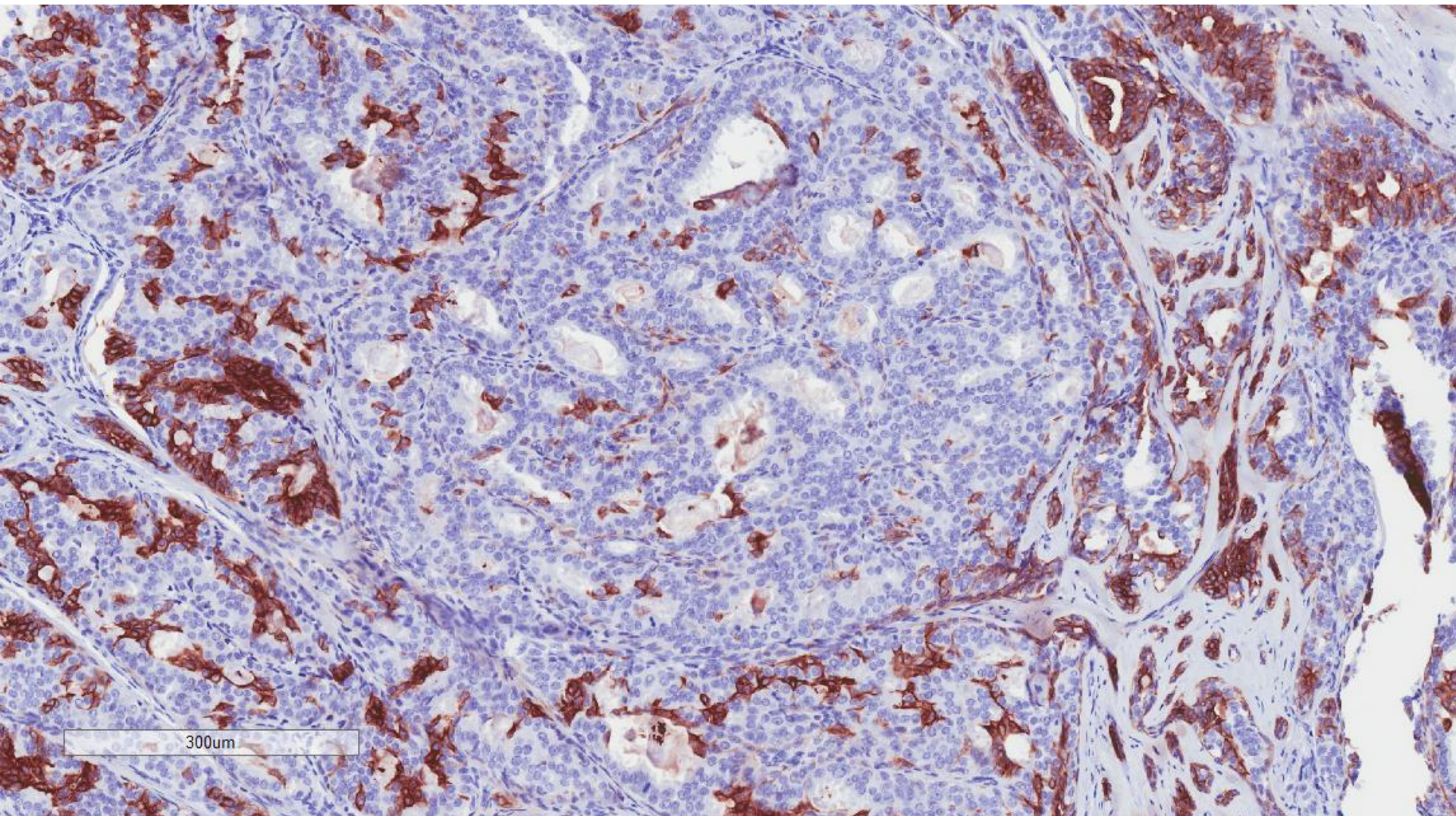
CK5/6



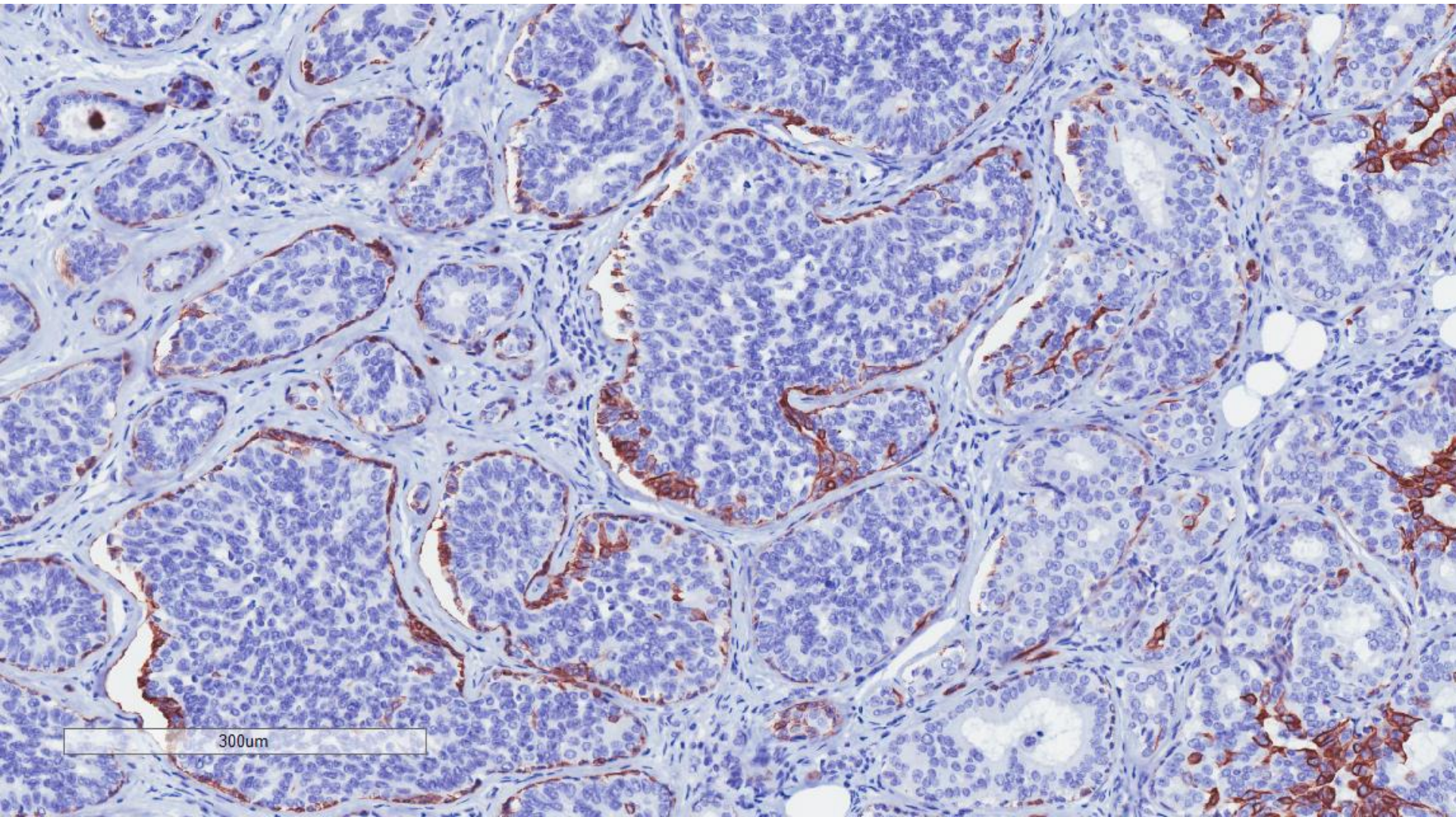
CK5/6



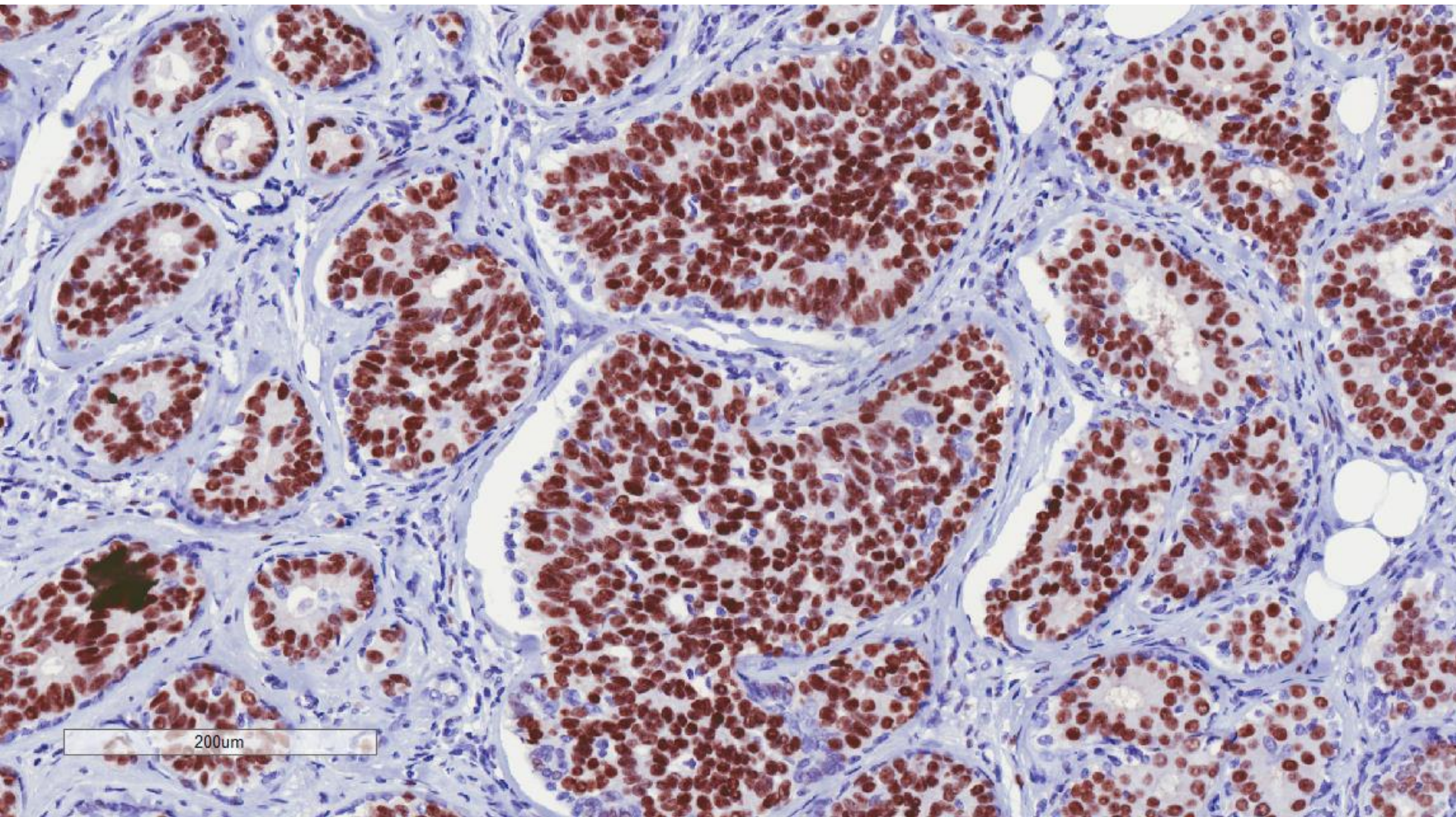
CK5/6



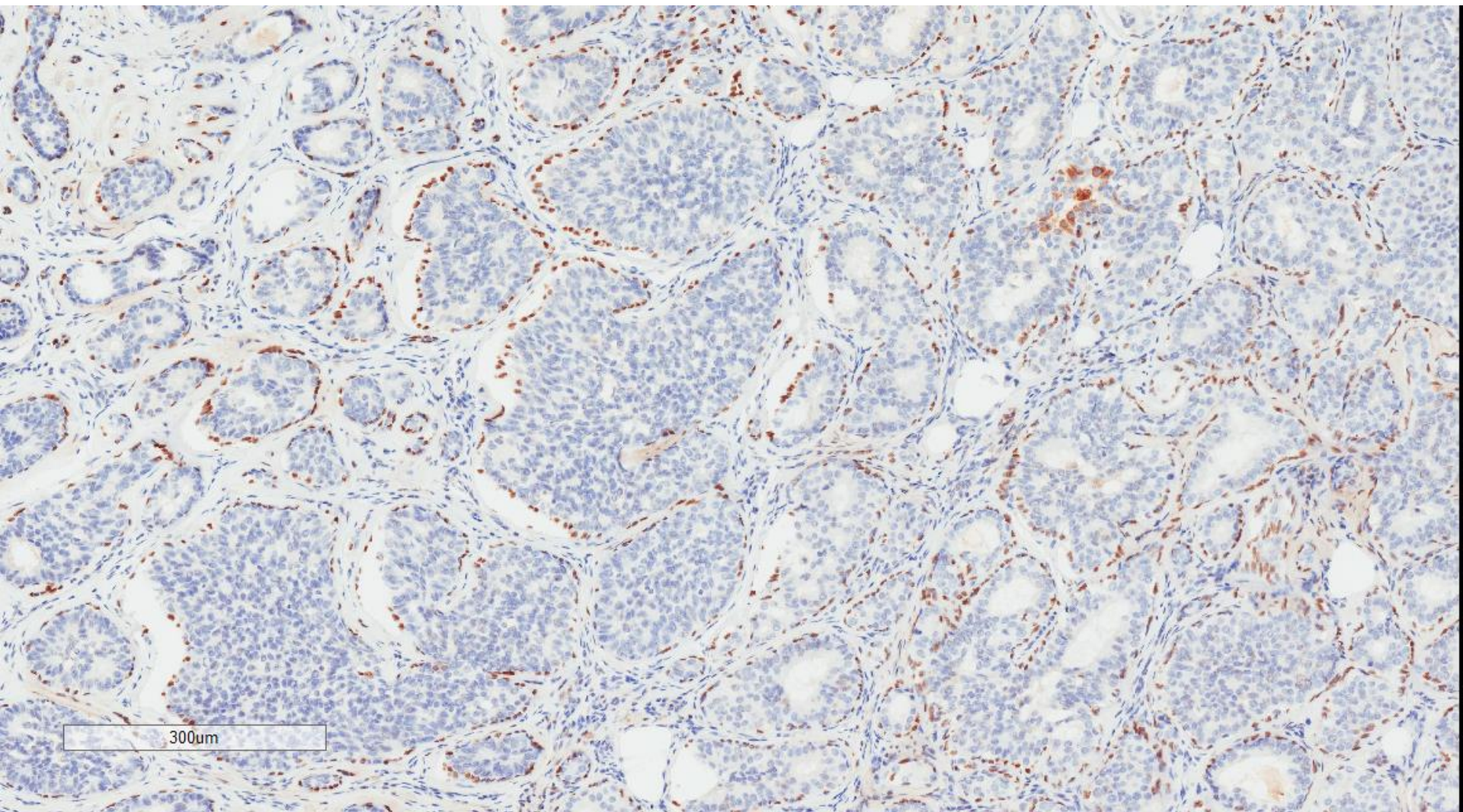
CK14



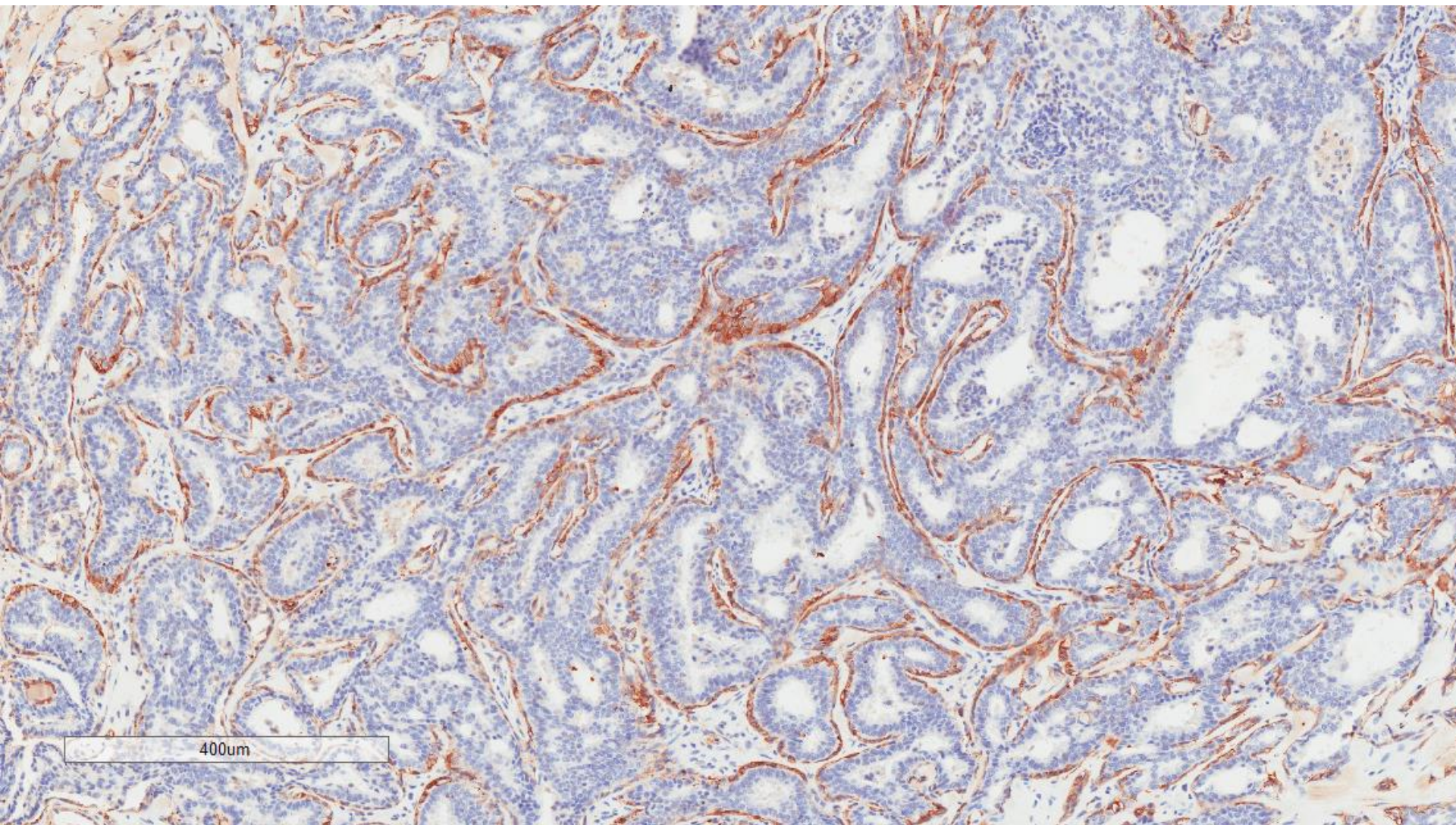
ER



p63



SMMHC



Low to intermediate nuclear grade
ductal carcinoma in situ, superimposed
on a radial sclerosing lesion,
ER positive, PR positive