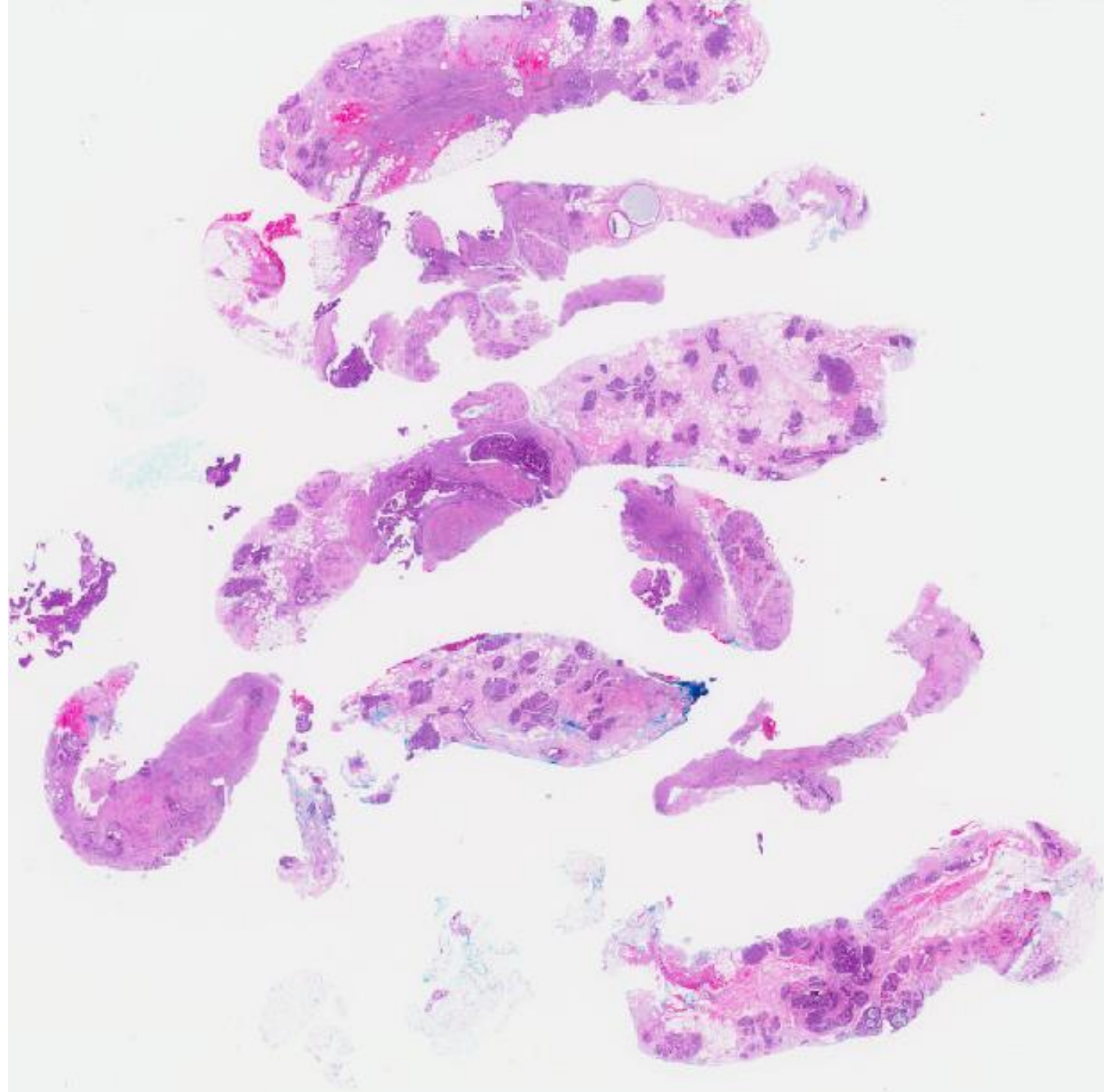
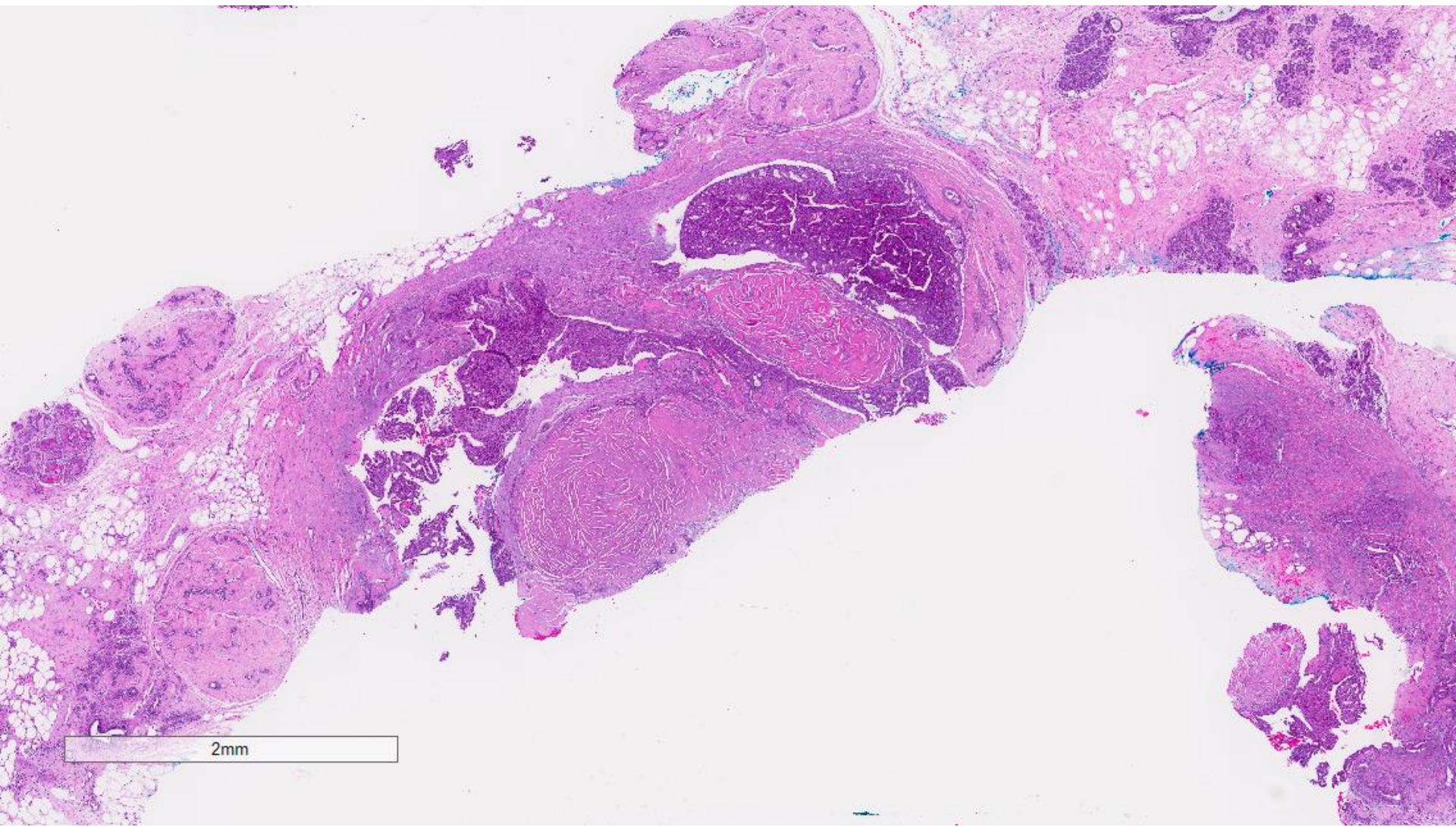
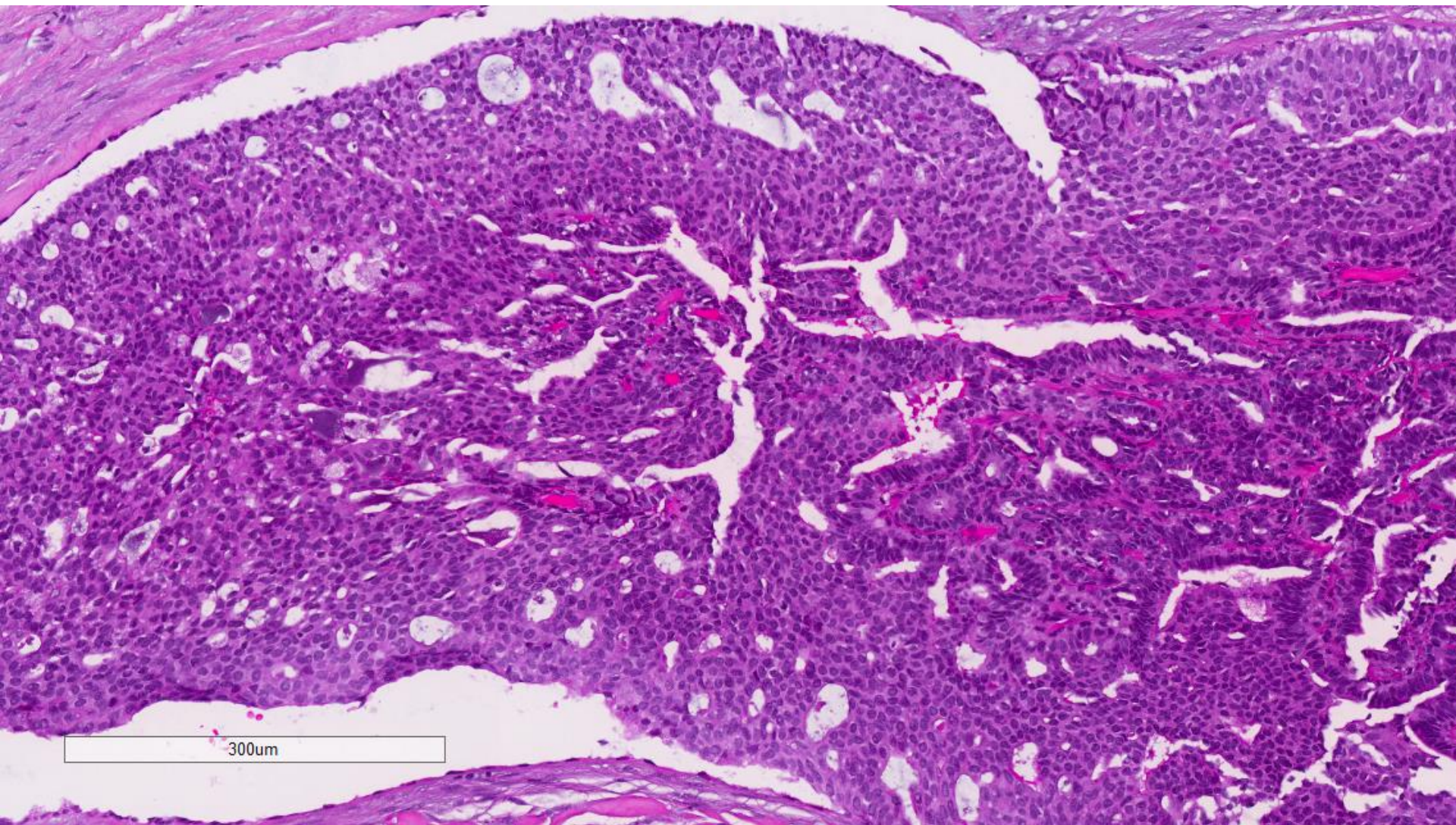


Case 3

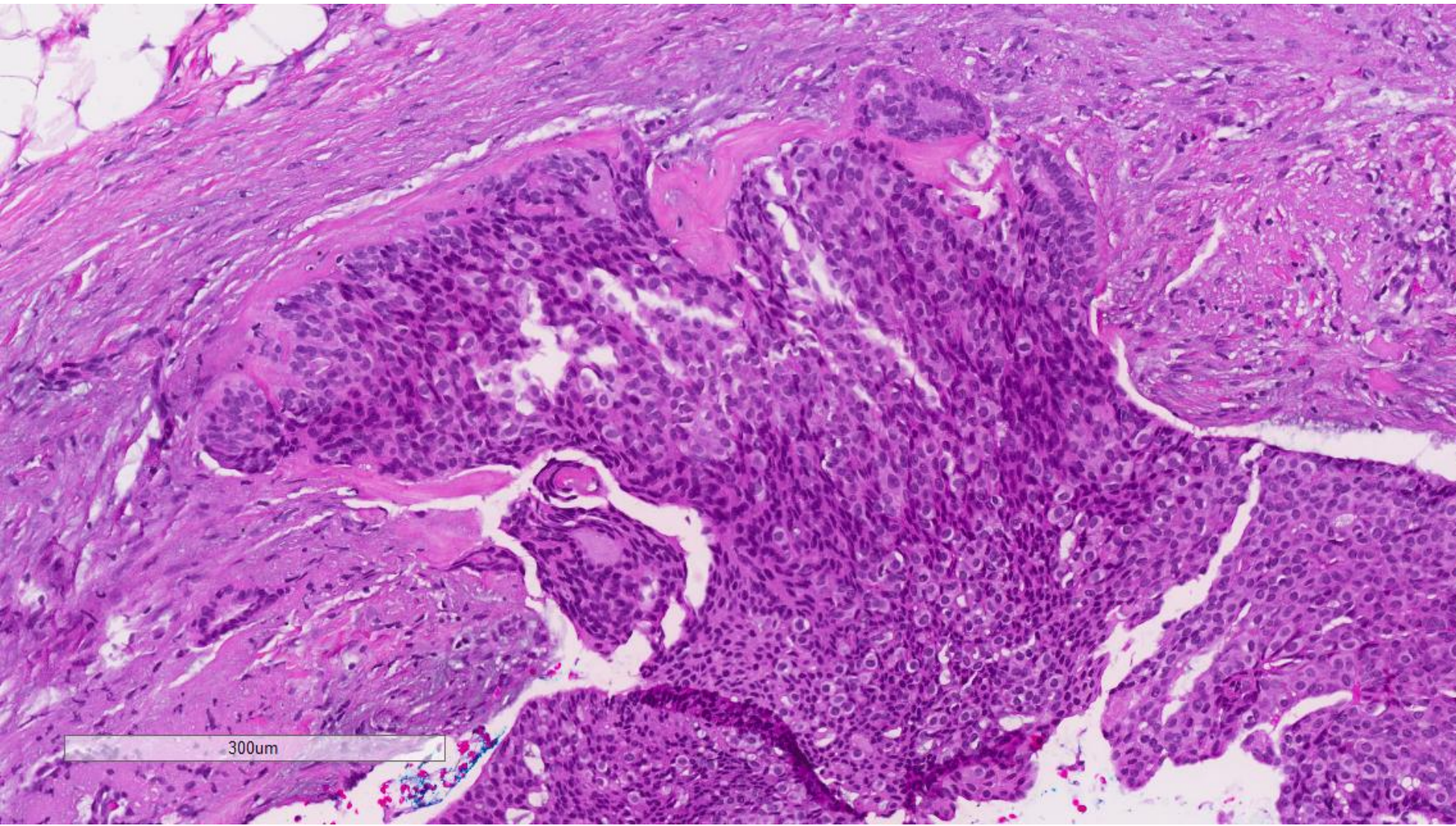
A 50 year old lady was discovered to have a left breast 0300 nodule on screening mammography. A trucut core biopsy revealed a papillary lesion. A mammotome excision was performed.



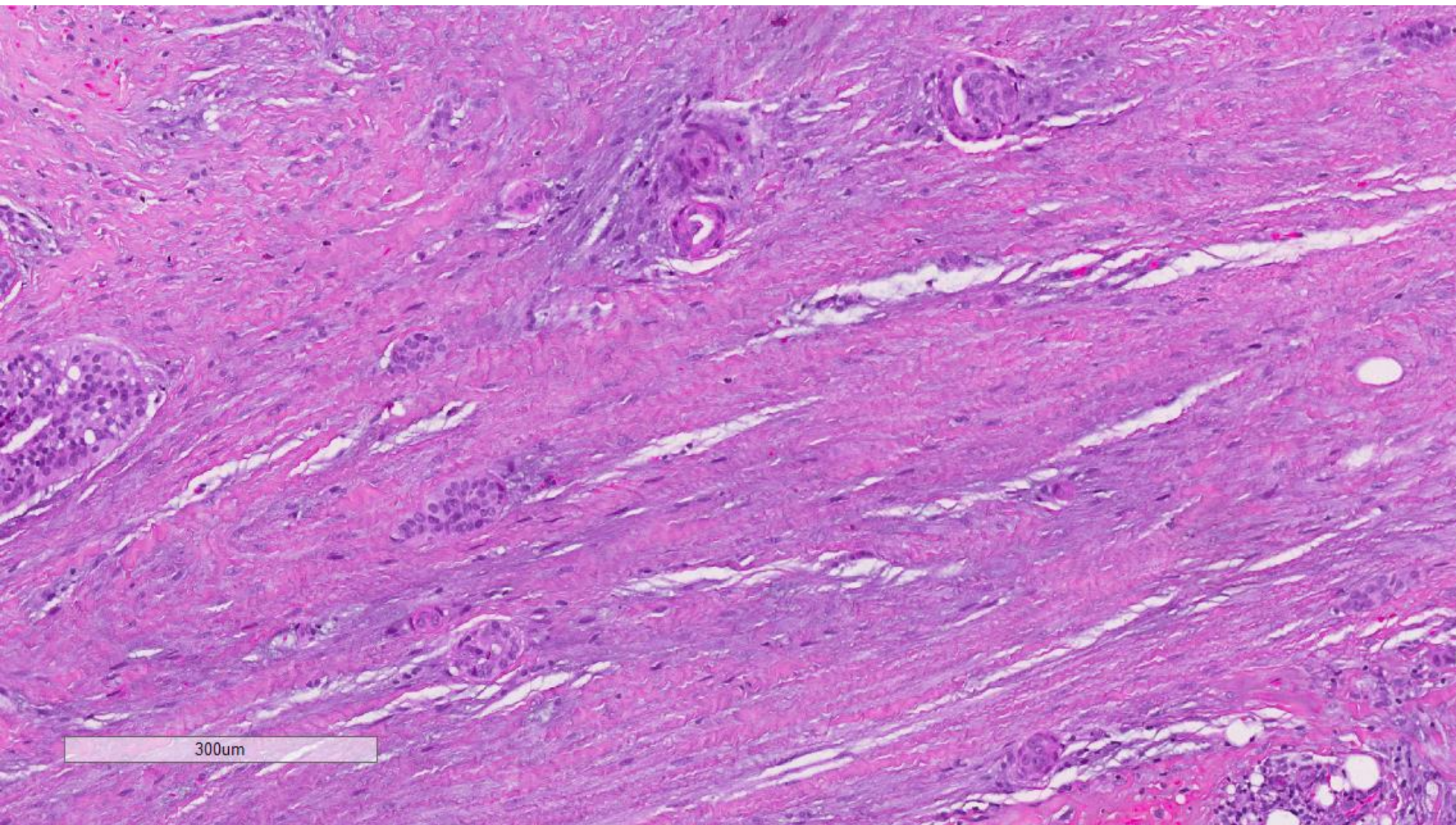




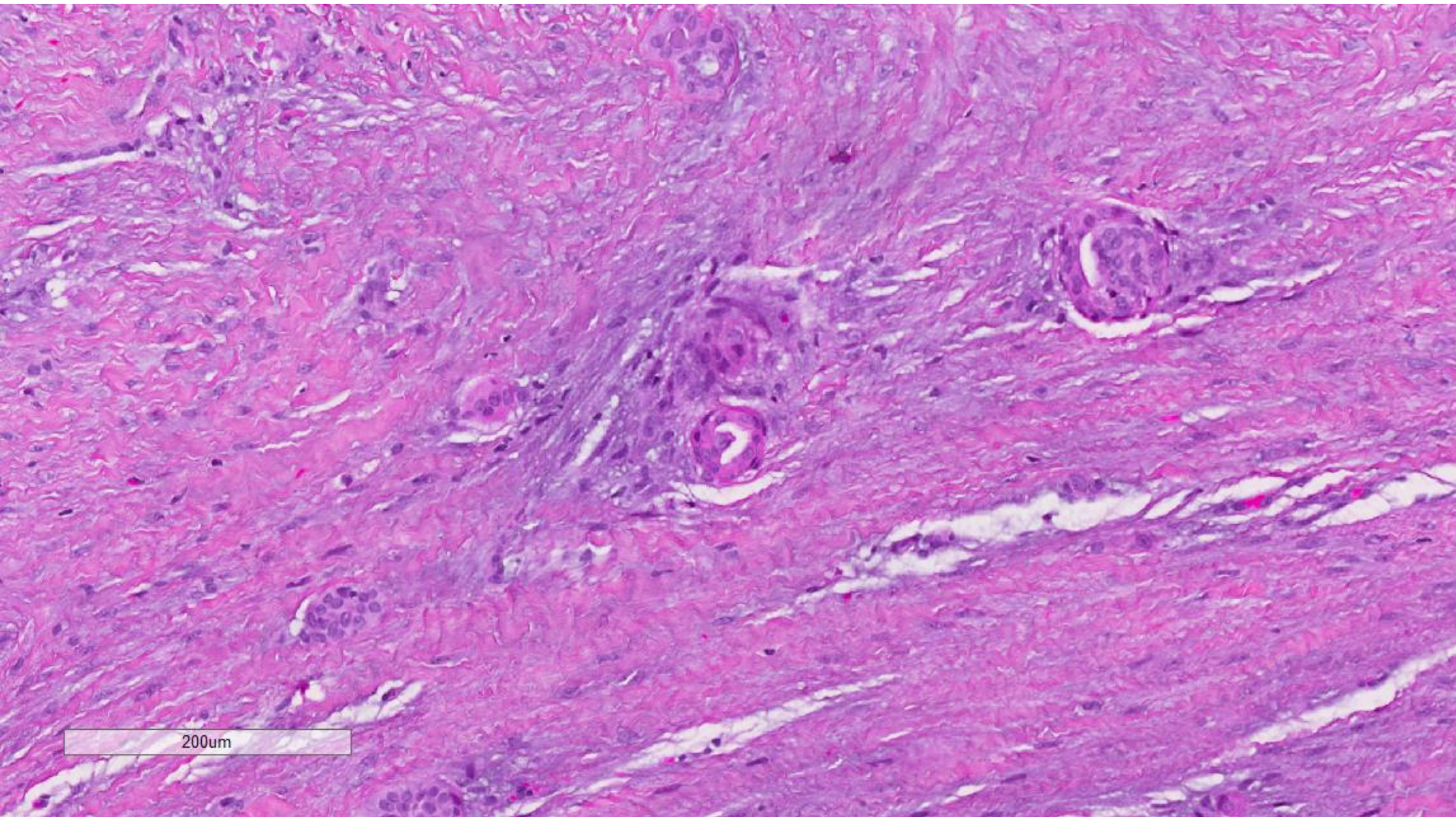
300um



300um

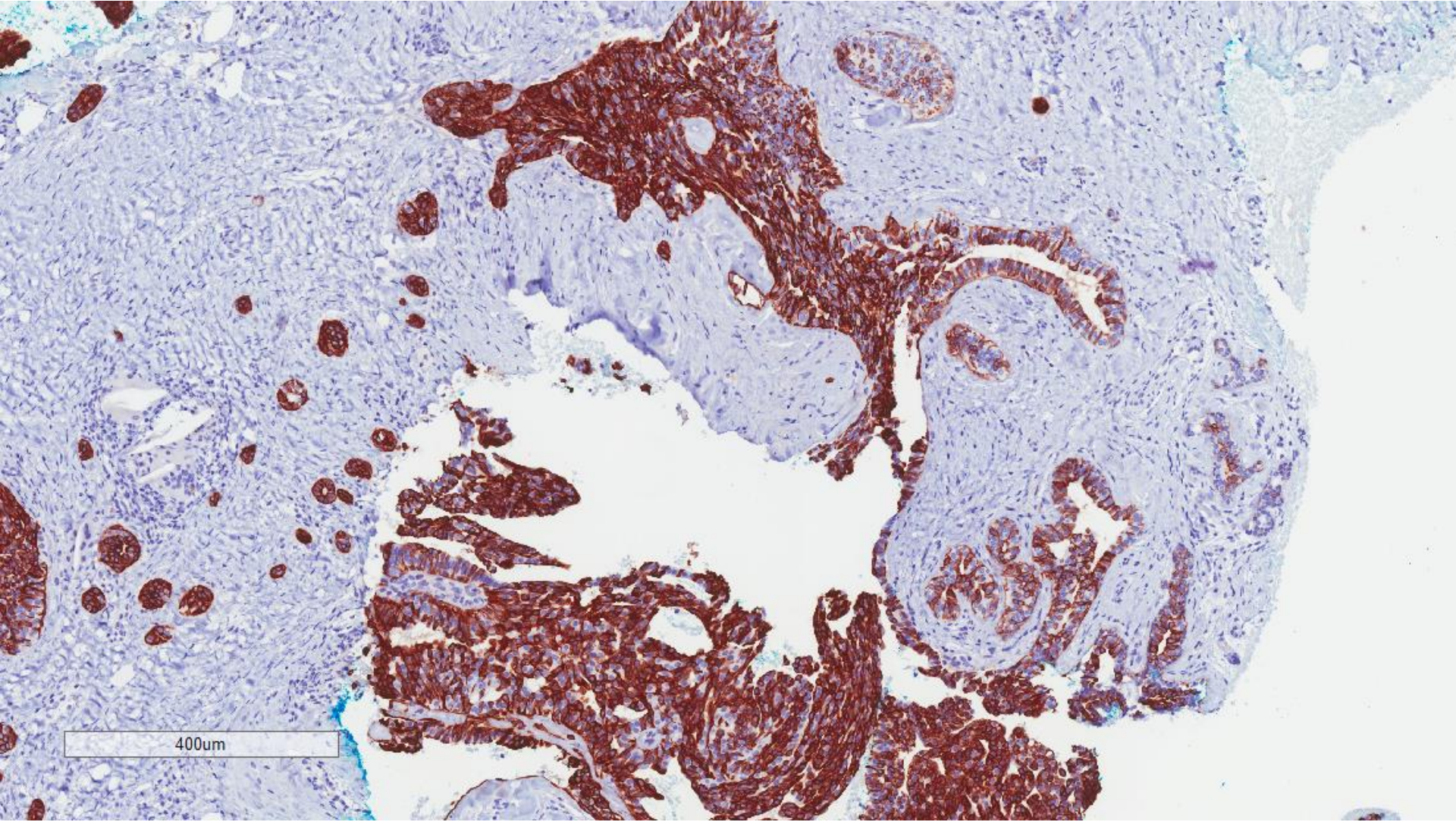


300um

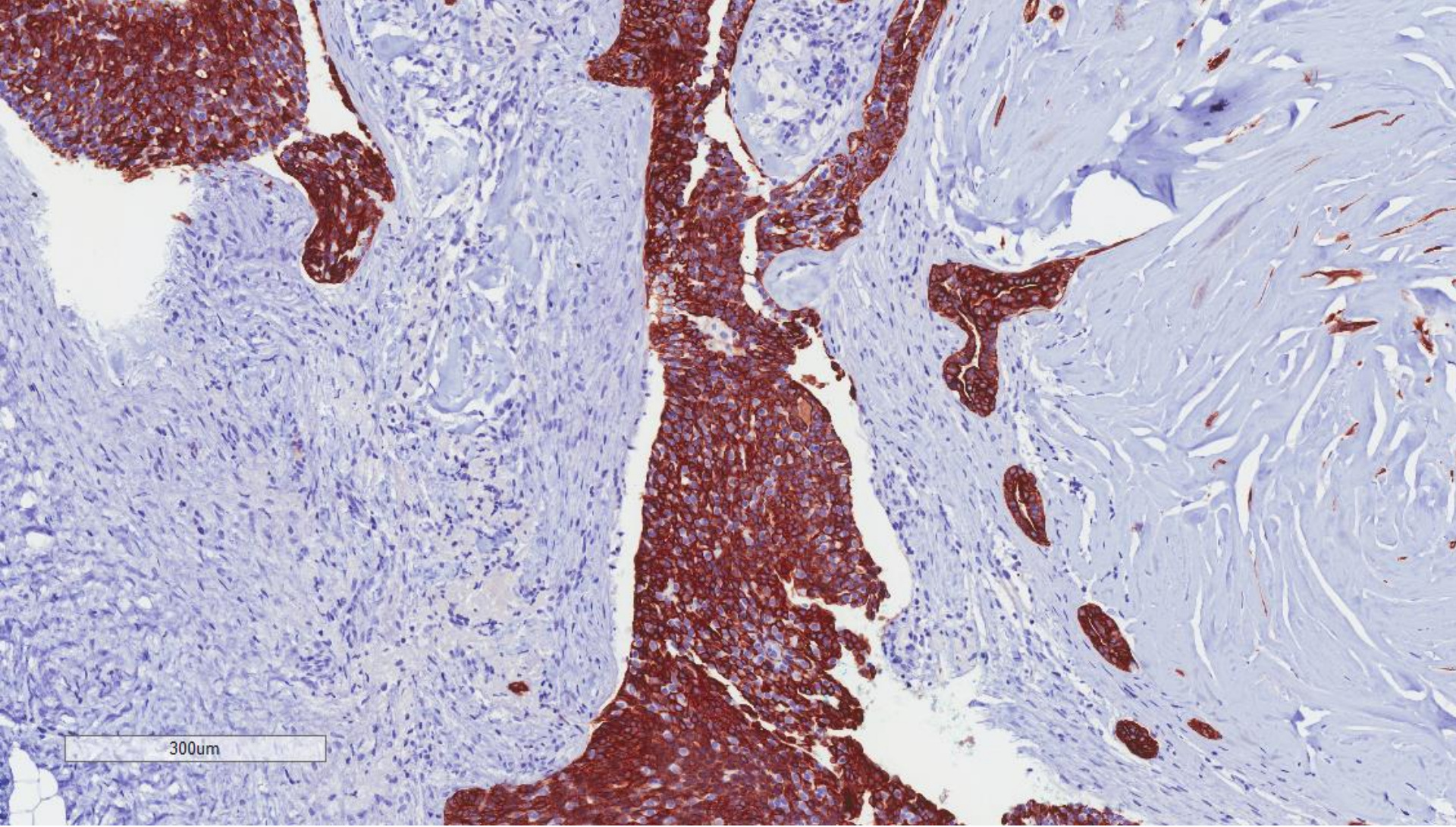


200um

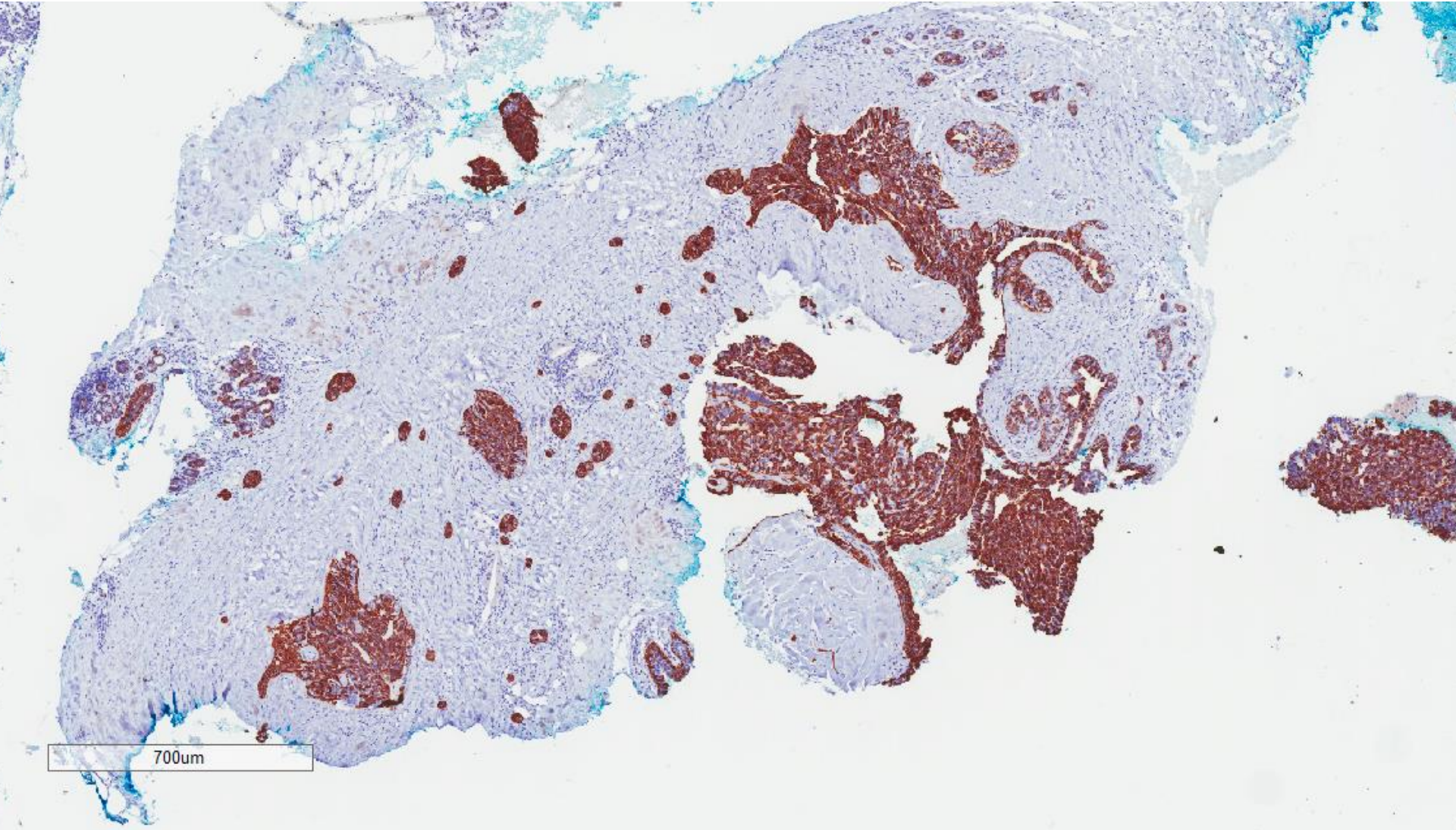
CK5/6



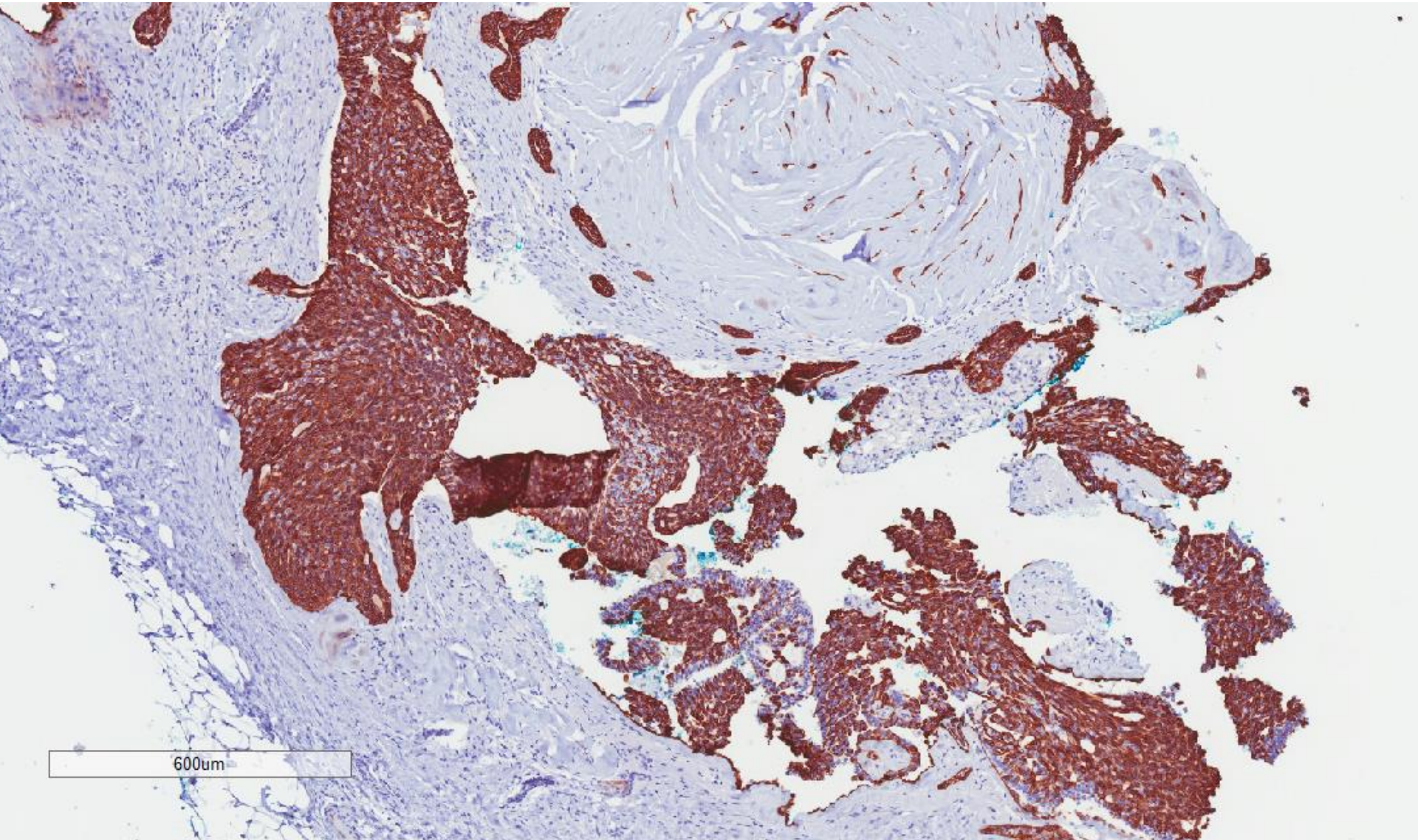
CK5/6



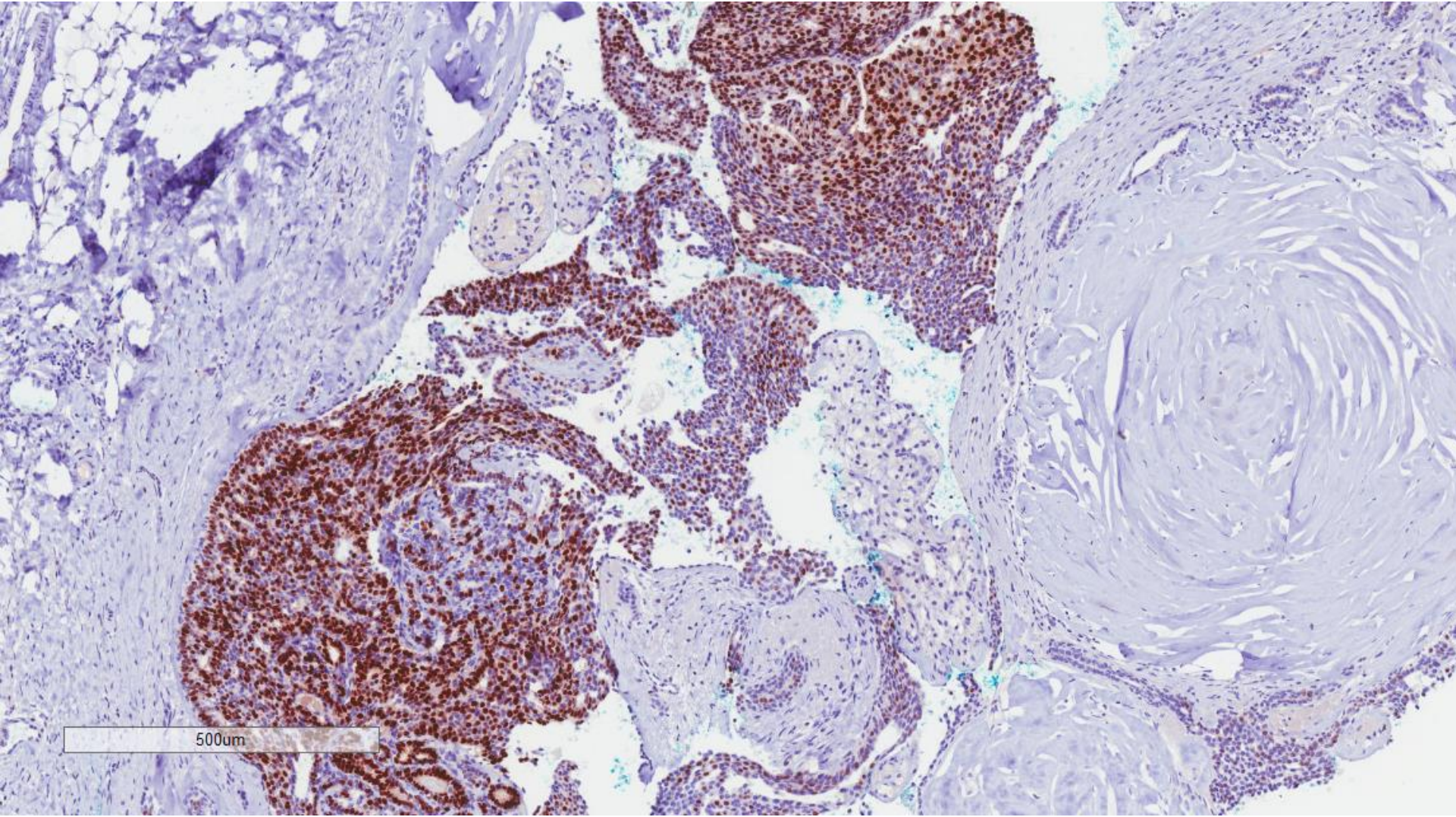
CK14



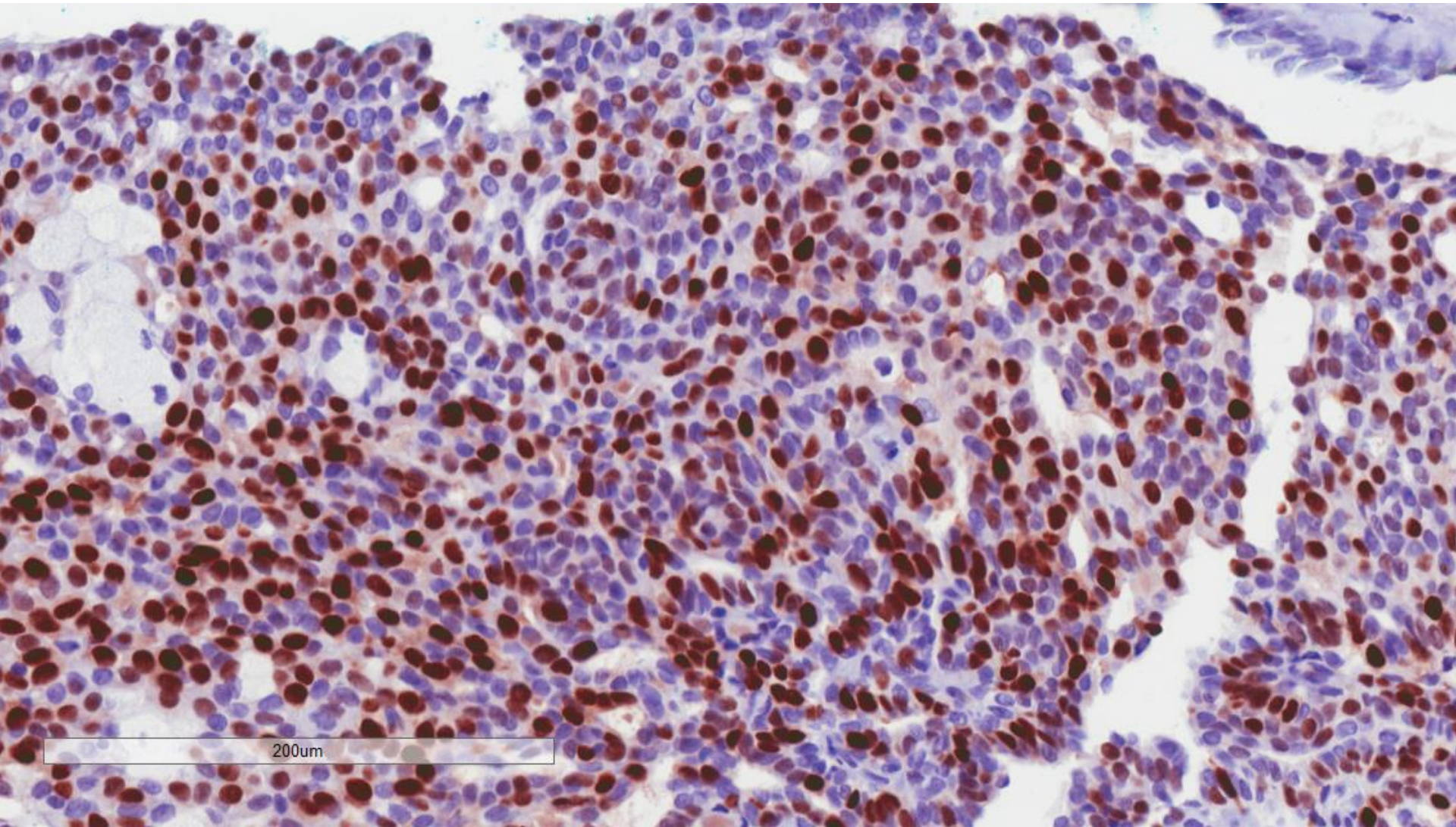
CK14



ER



ER



Ultrasound mammotome excision
biopsy, left breast 0300 nodule:
Intraductal papilloma with florid
usual ductal hyperplasia