

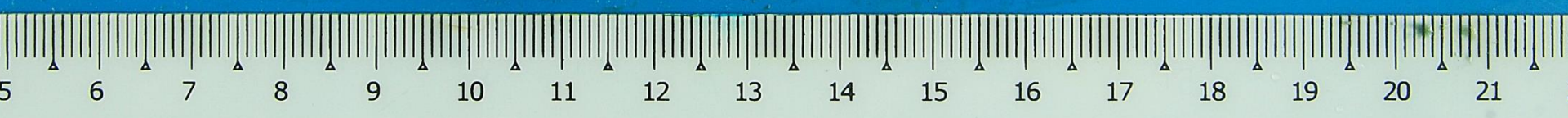
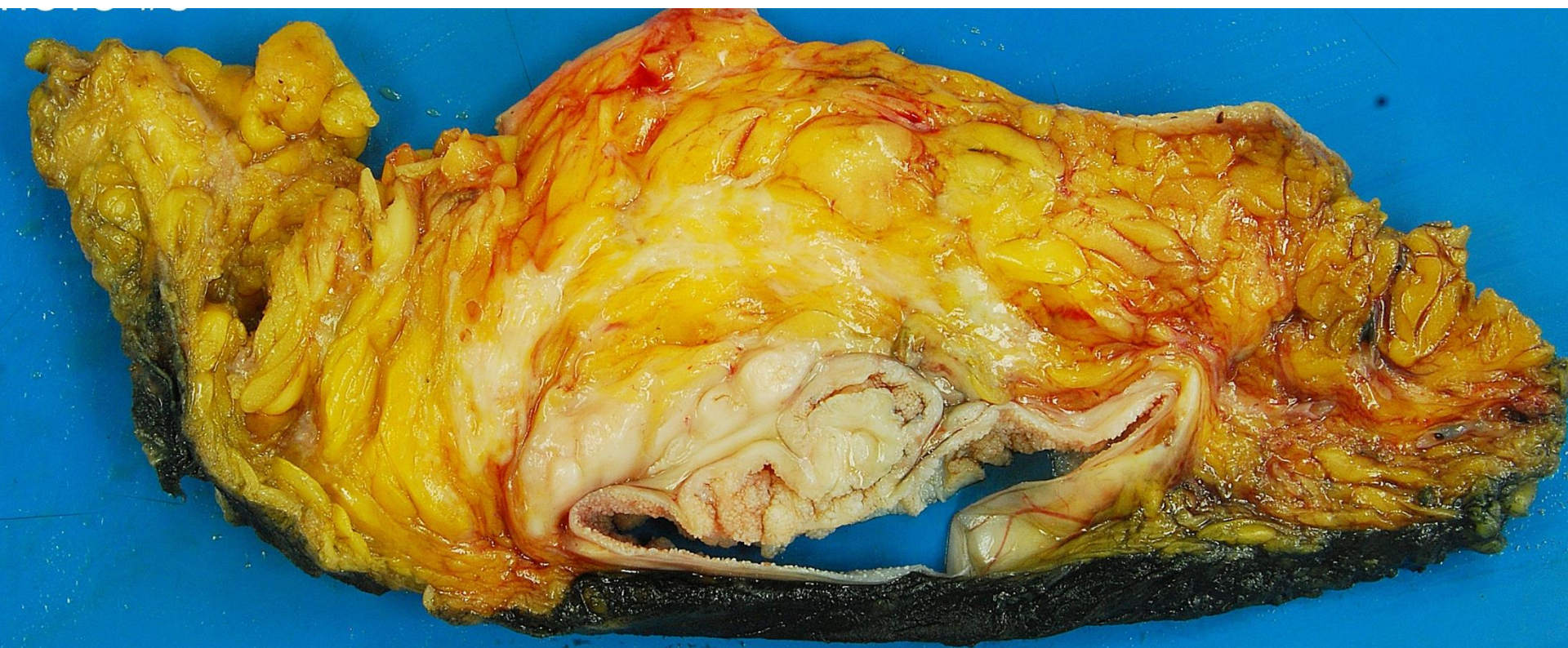
## Case 10

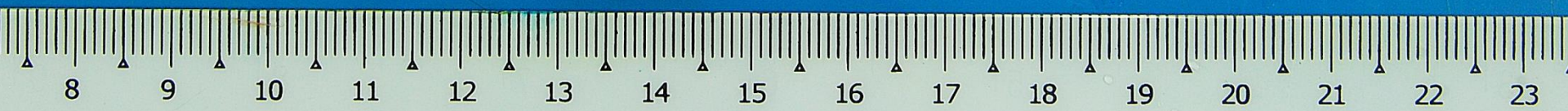
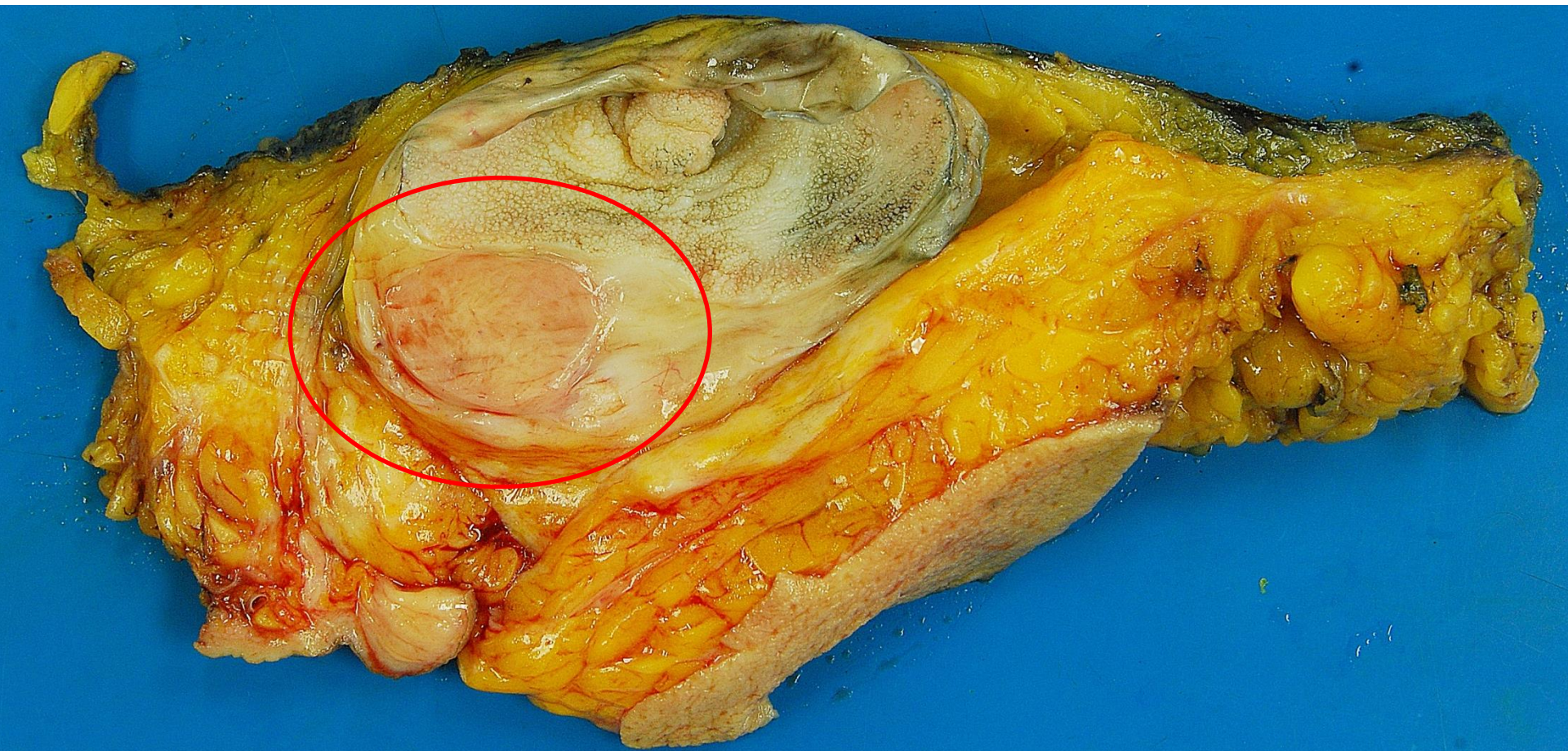
69 year old lady was diagnosed with left invasive ductal carcinoma with axillary nodal metastases.

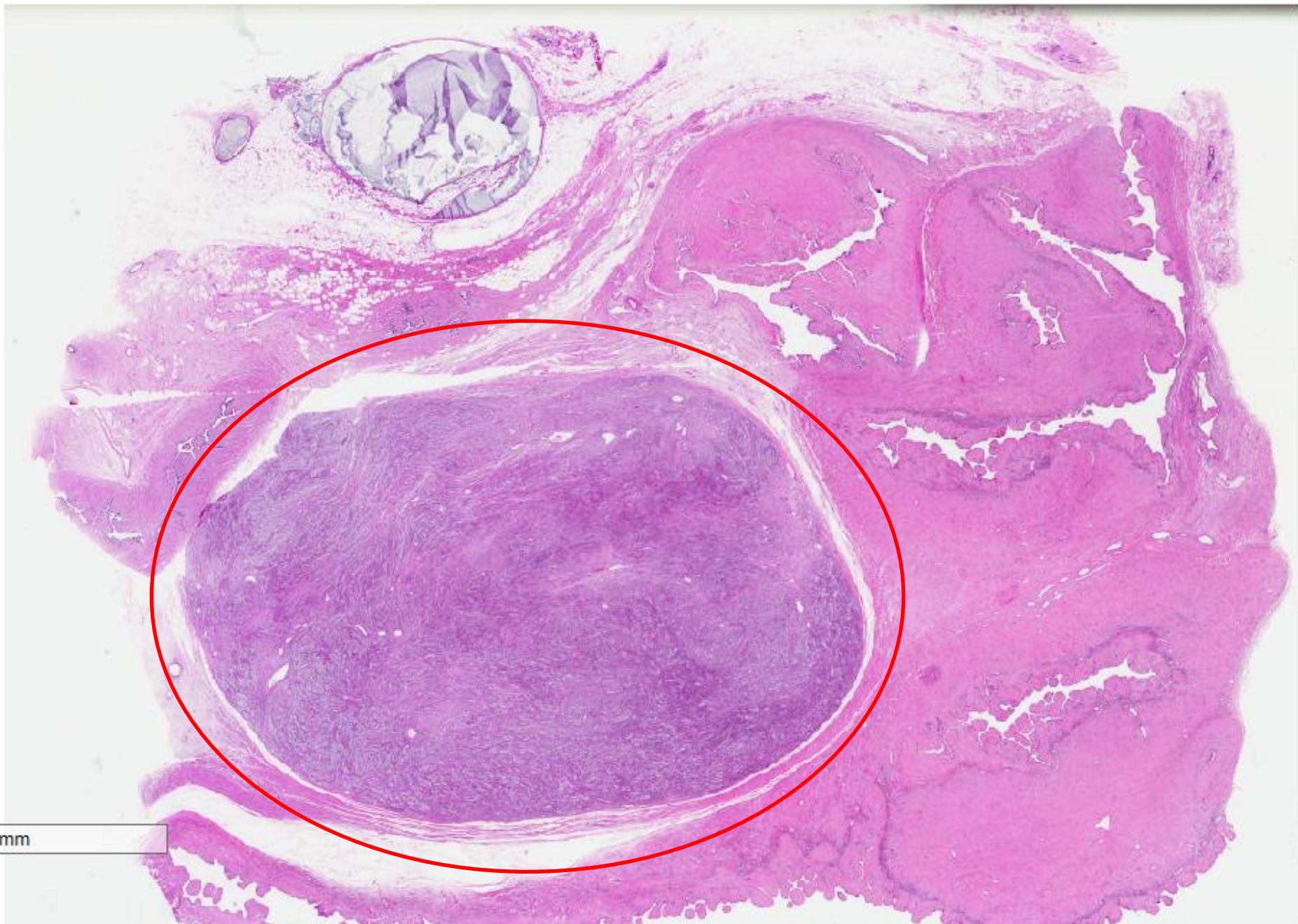
She was also found to have a right breast mass which disclosed a spindle cell tumour on core biopsy and was subsequently excised.

Section is from the right breast mass.

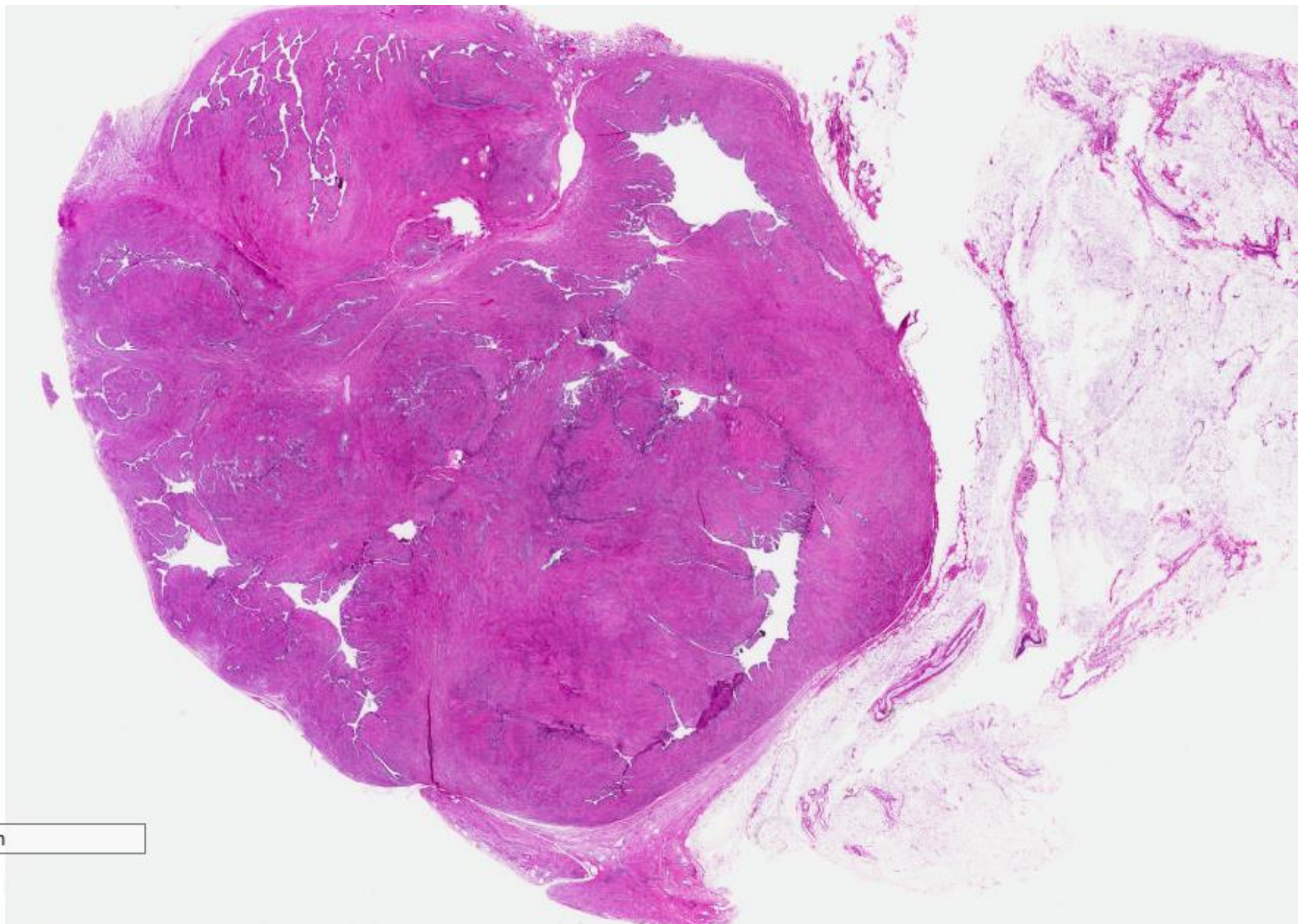




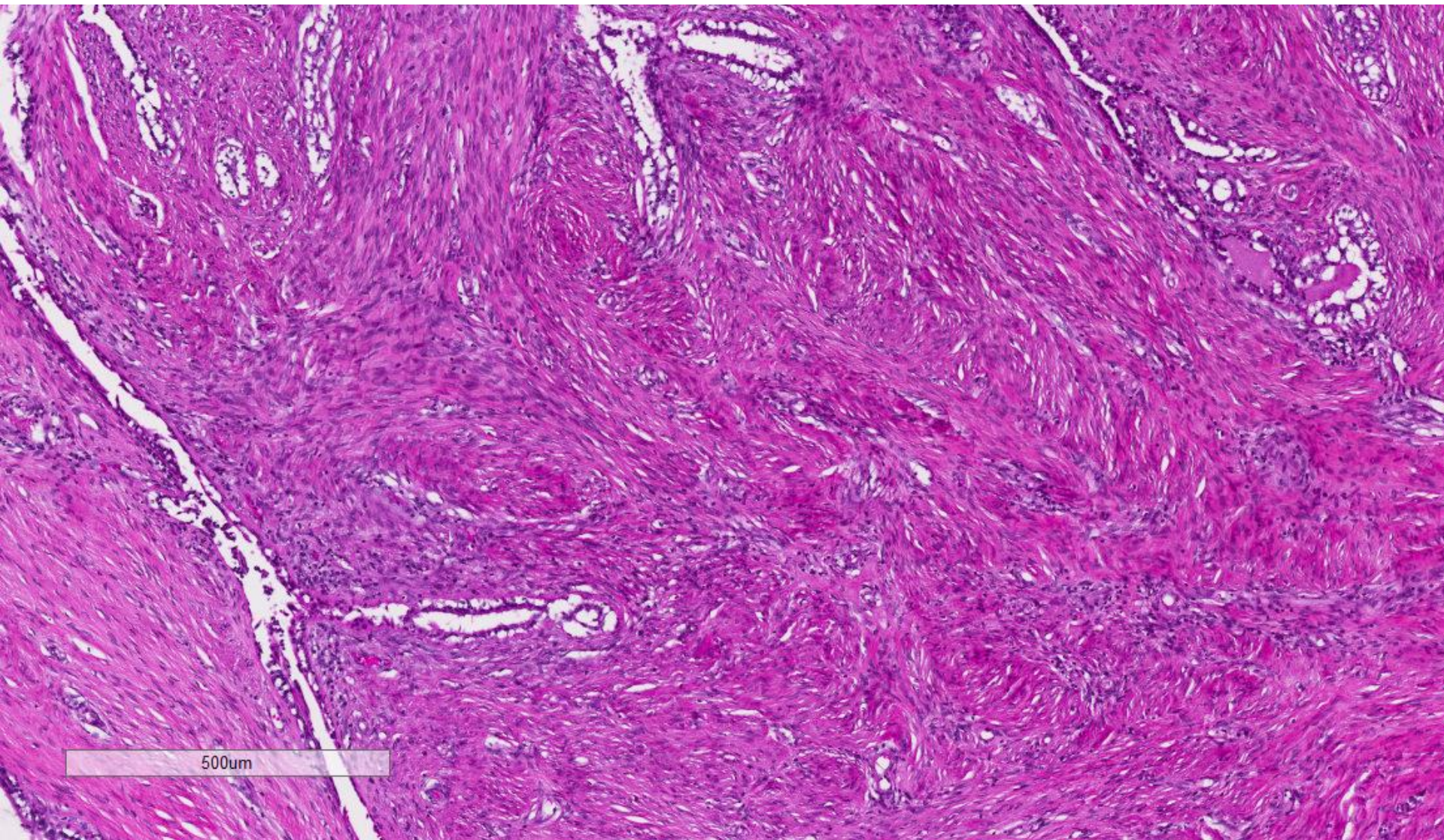




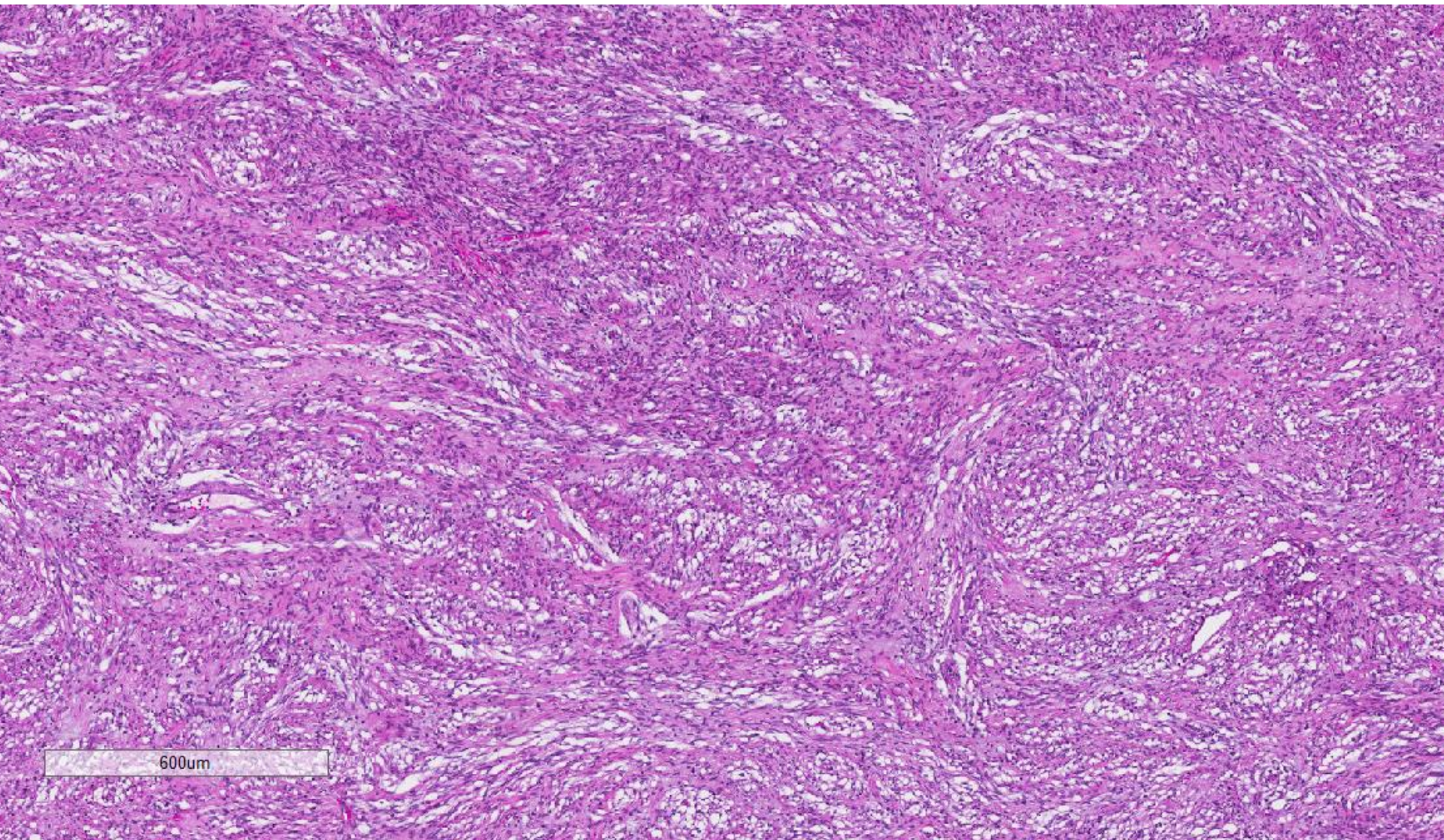
8mm



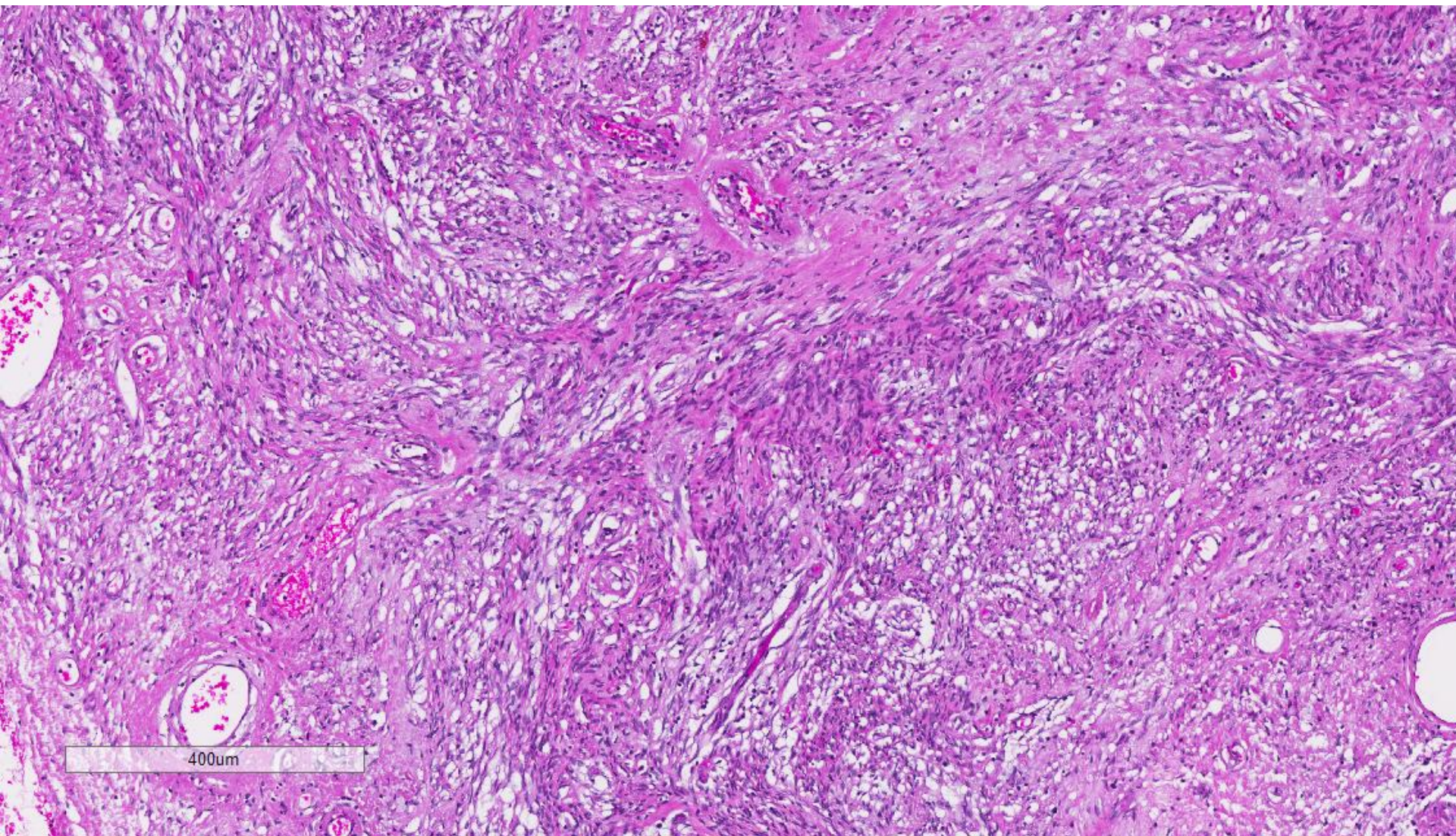
8mm



500um

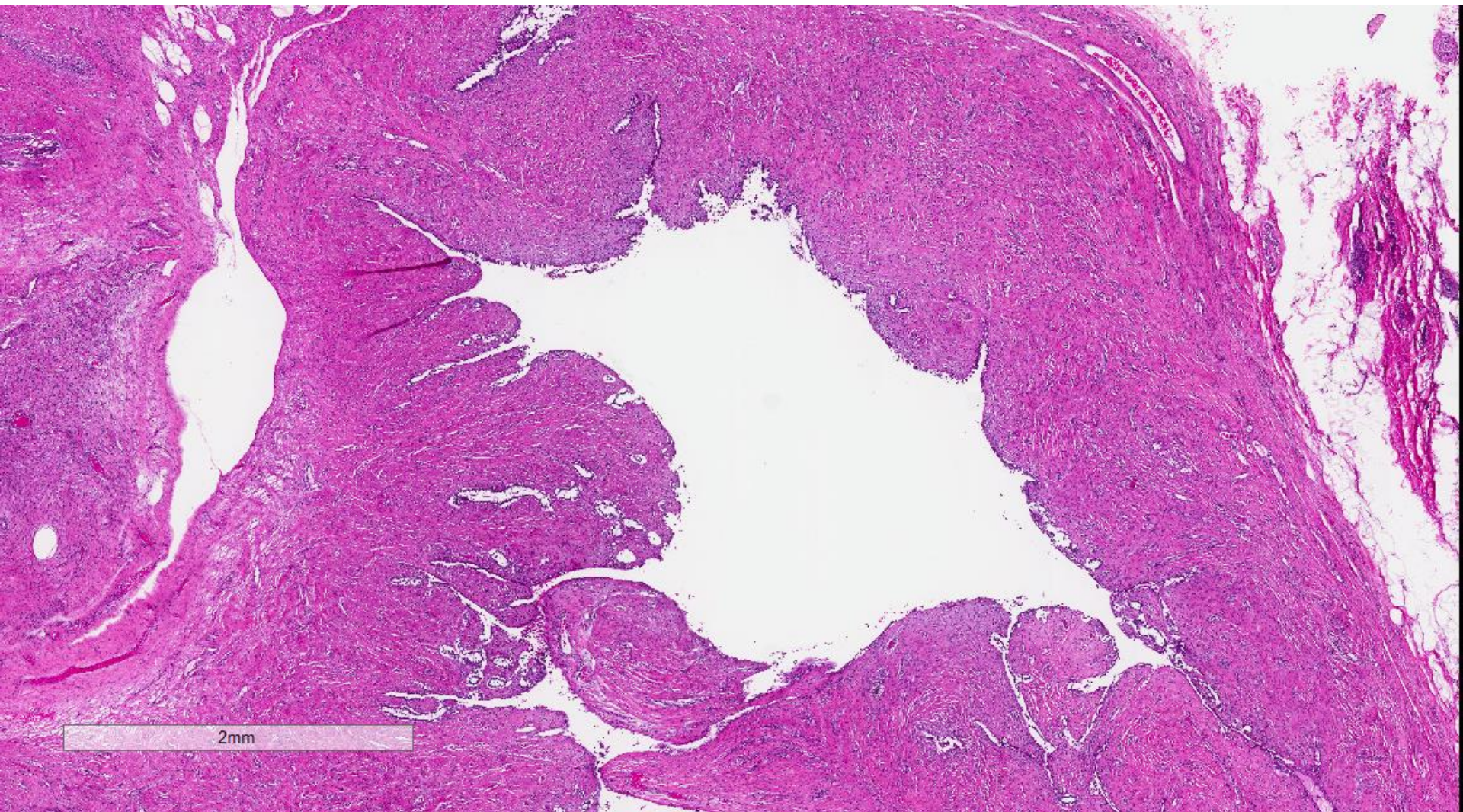


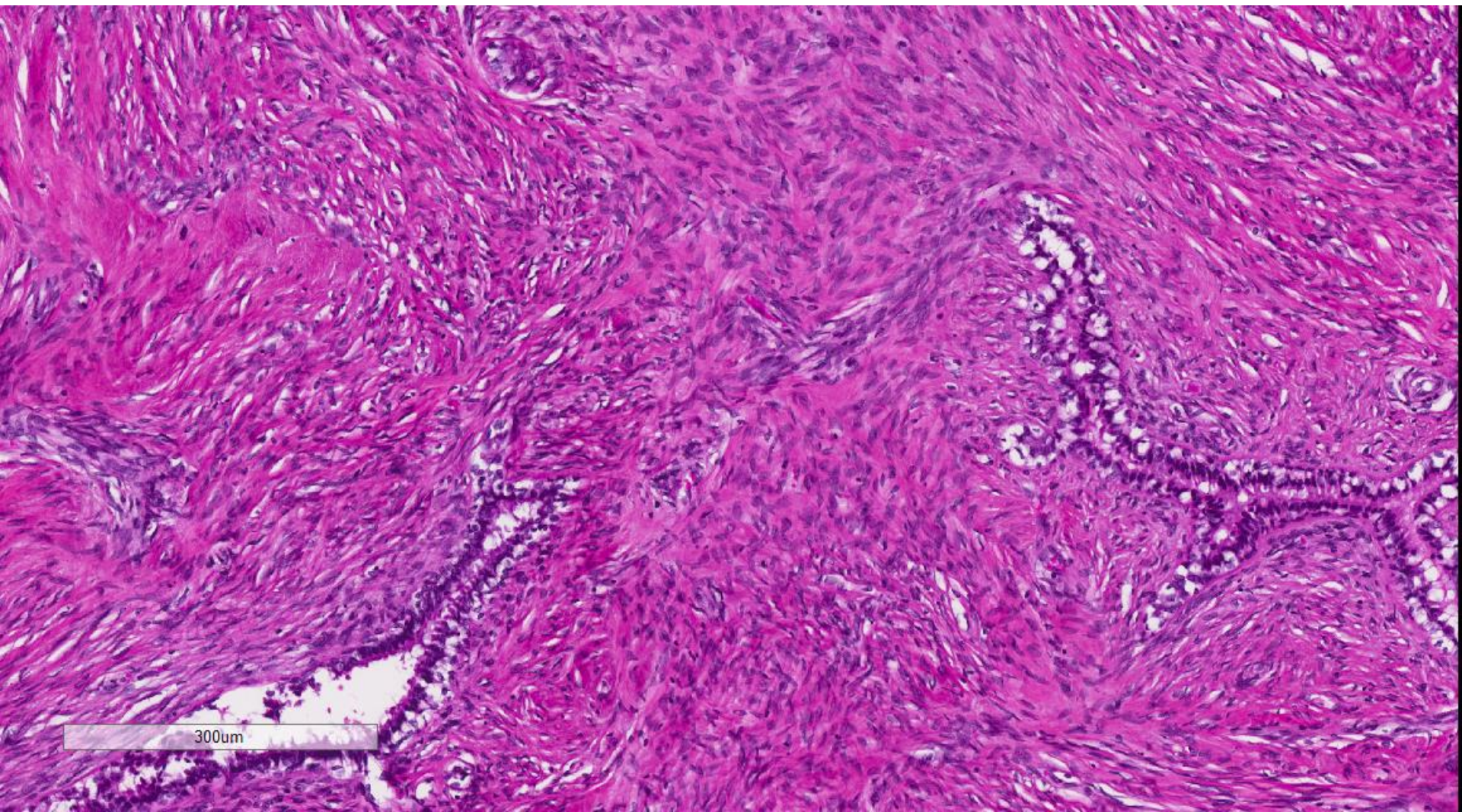


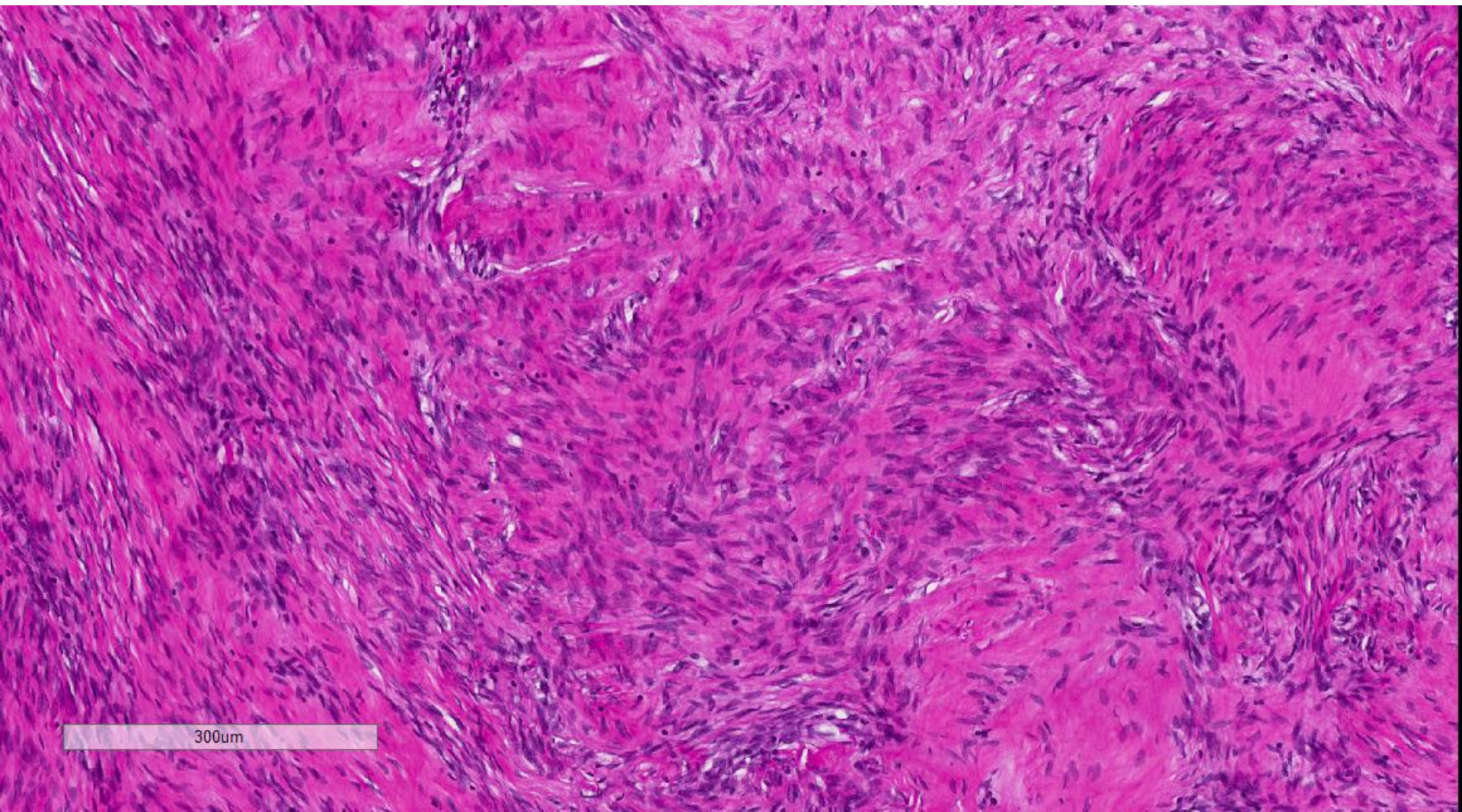


400um









Phyllodes tumour with borderline features (stromal overgrowth), 5.5 cm