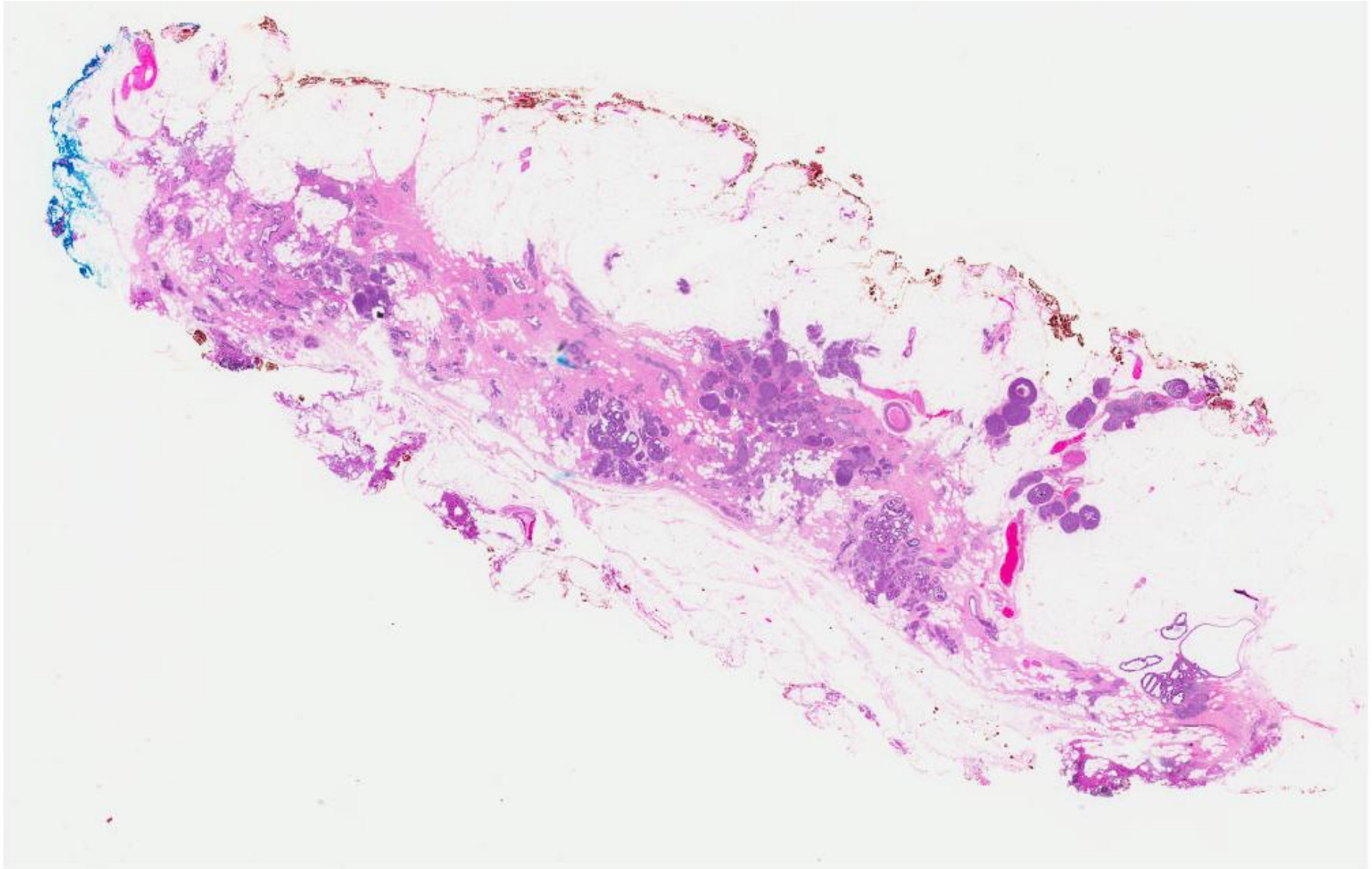
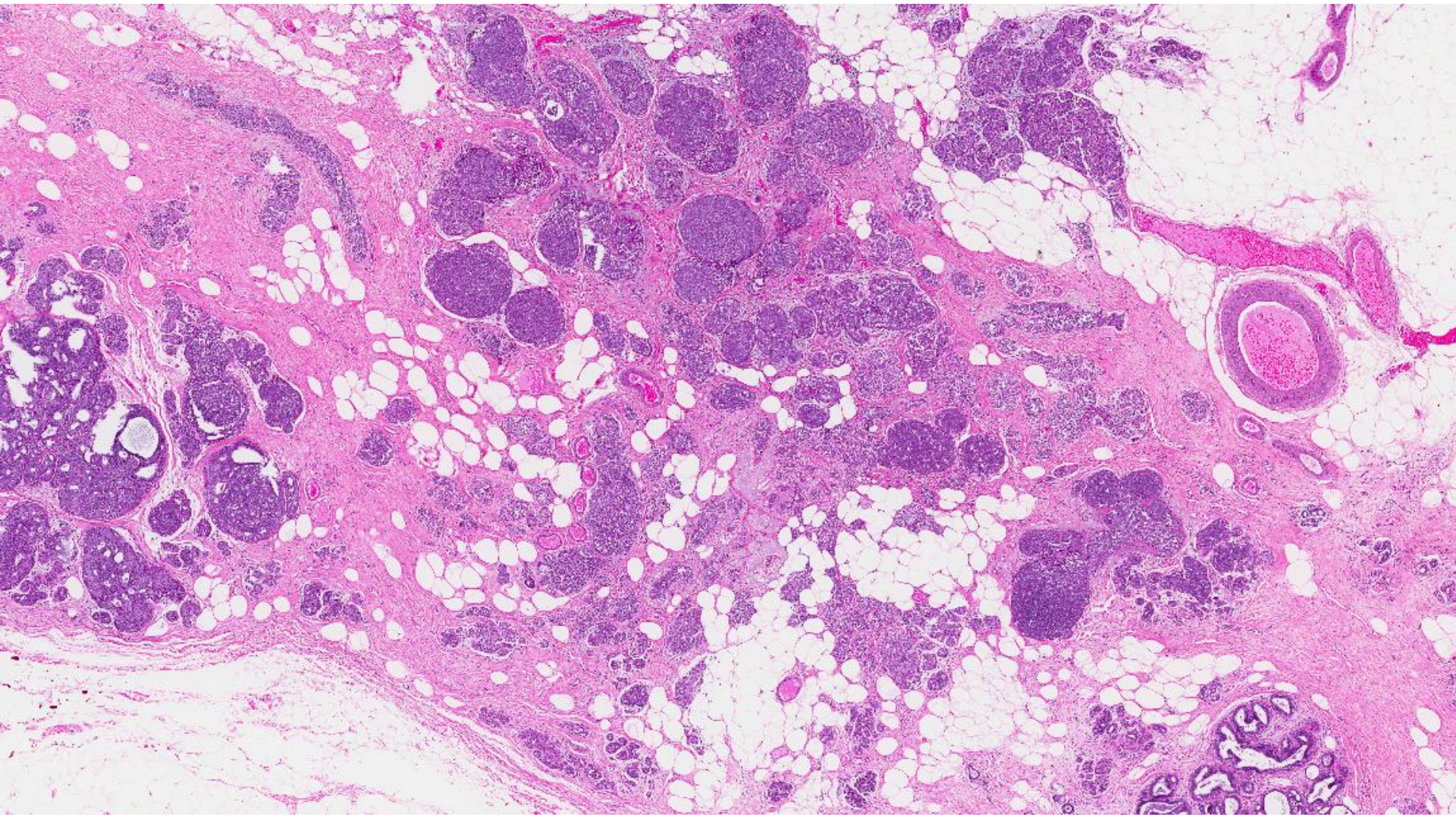


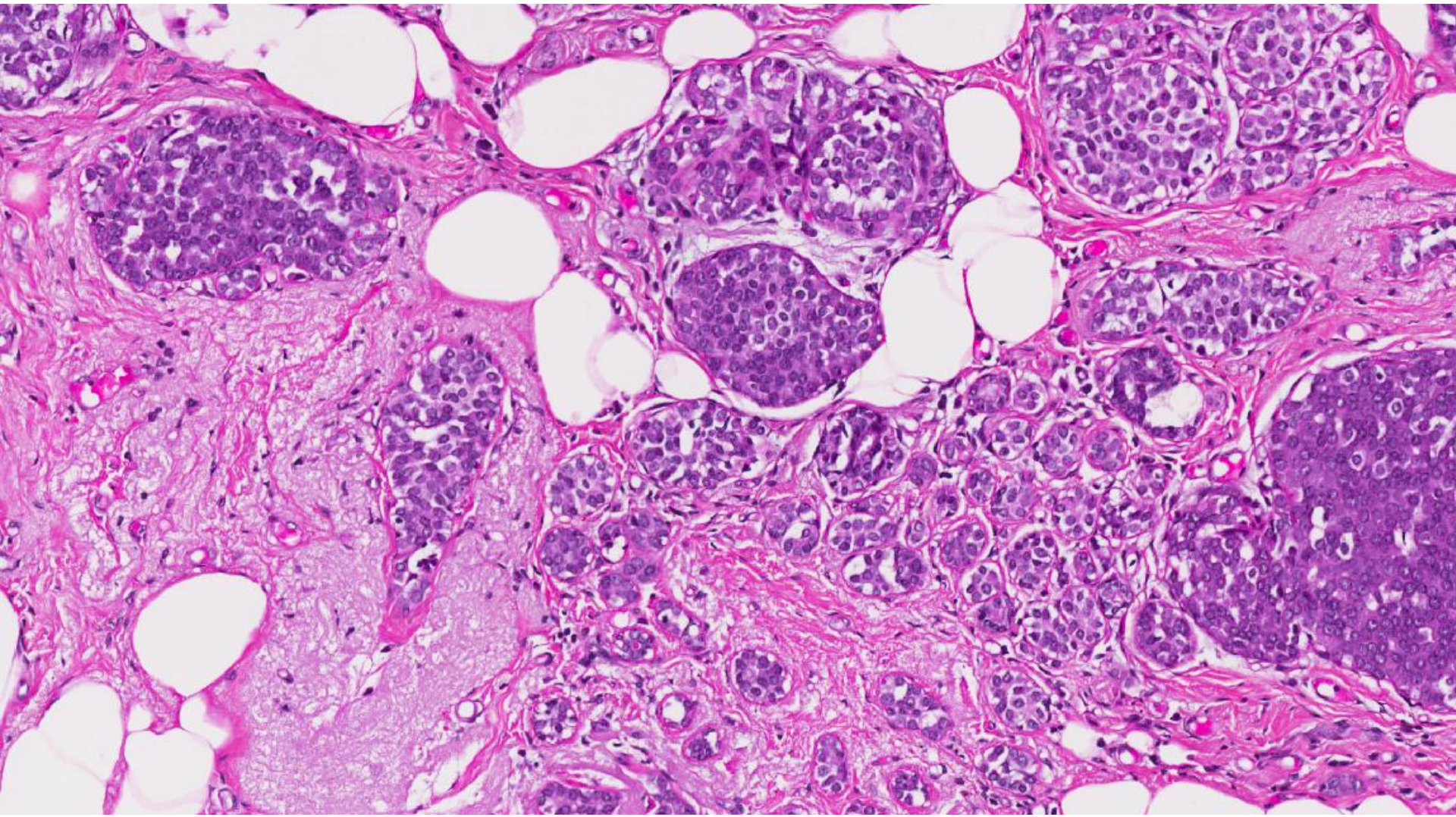
Case 24

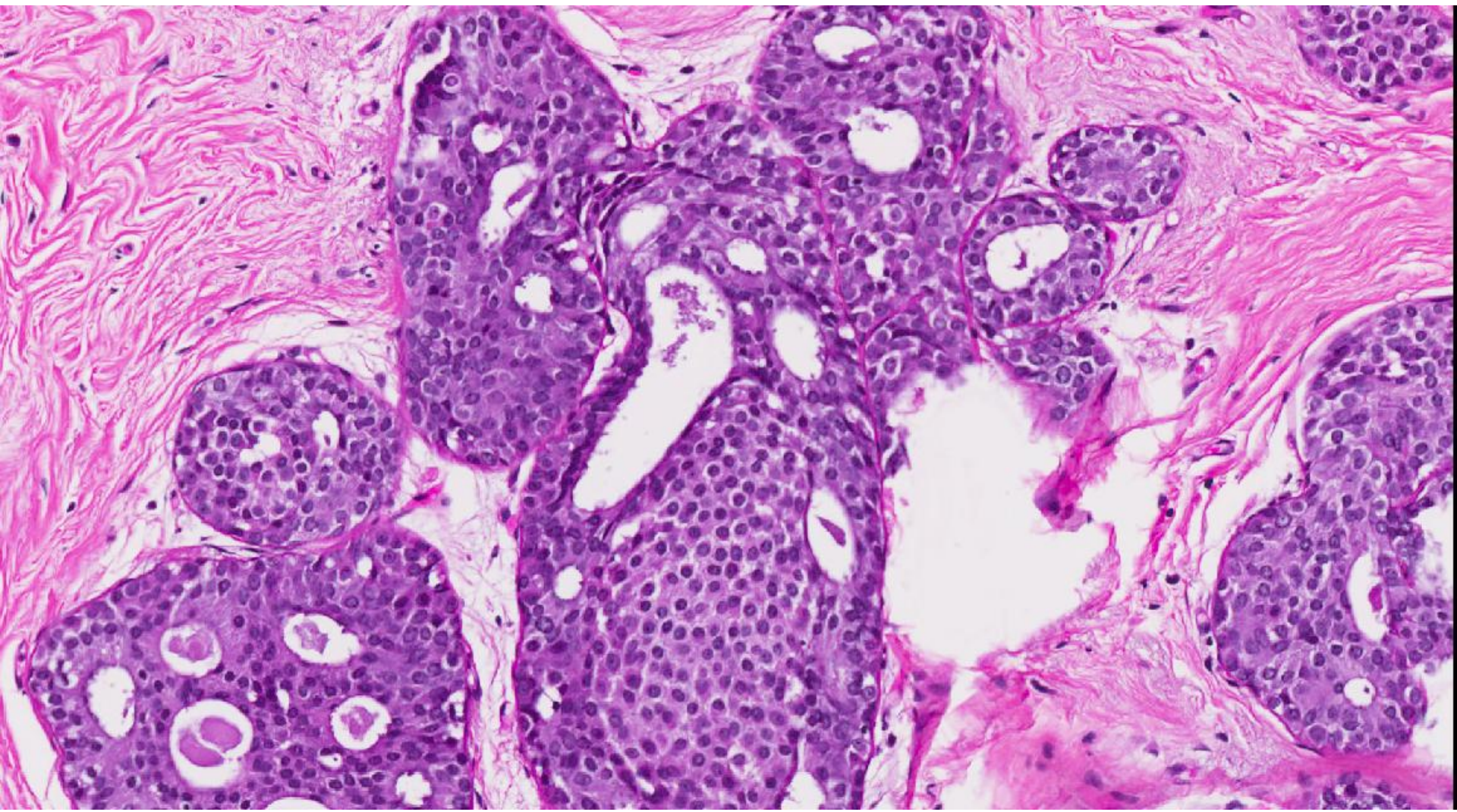
67 year old Chinese lady was detected on screening mammography to have worrisome calcifications in the left breast.

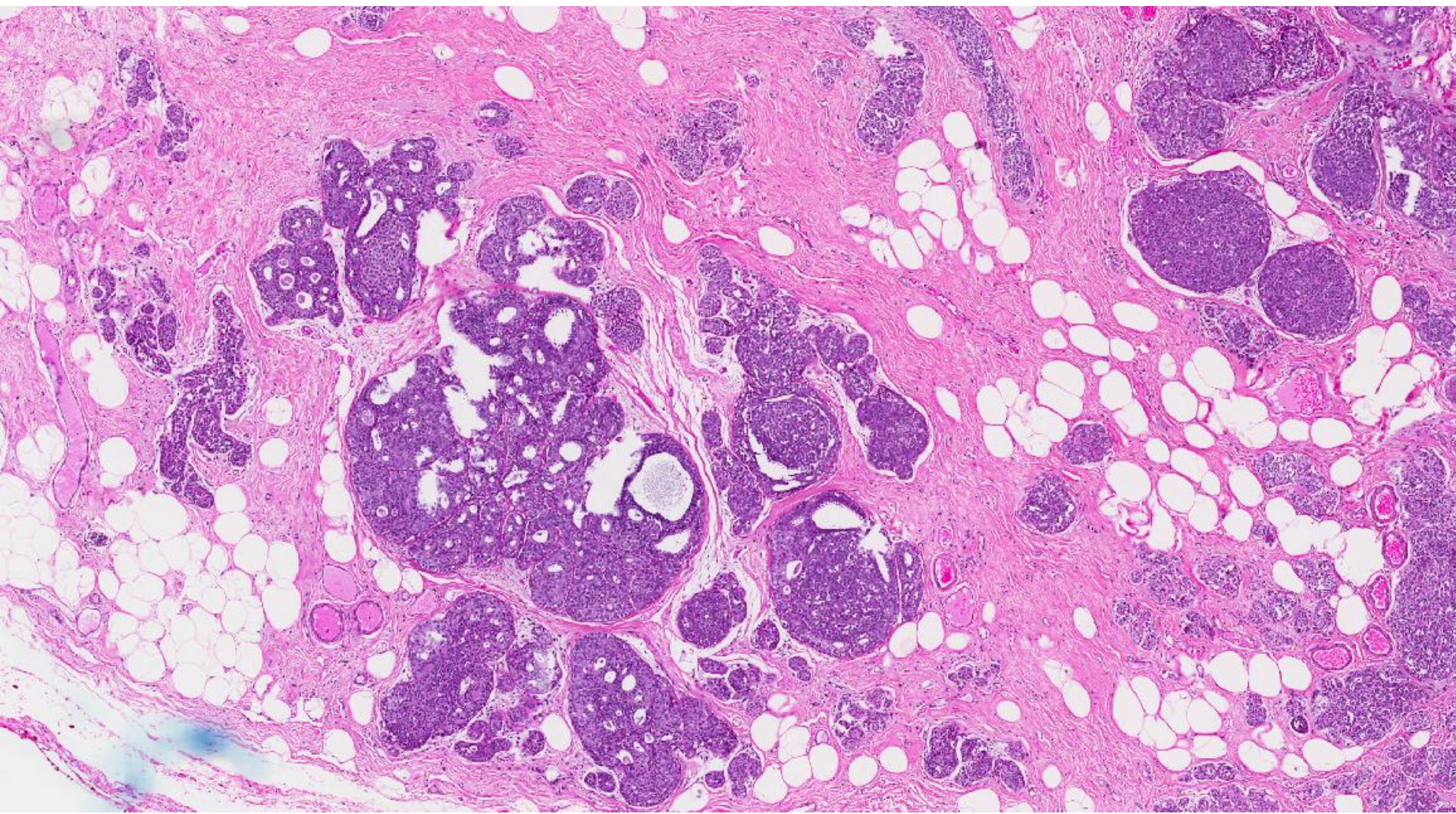
Hookwire localization and excision biopsy were performed.

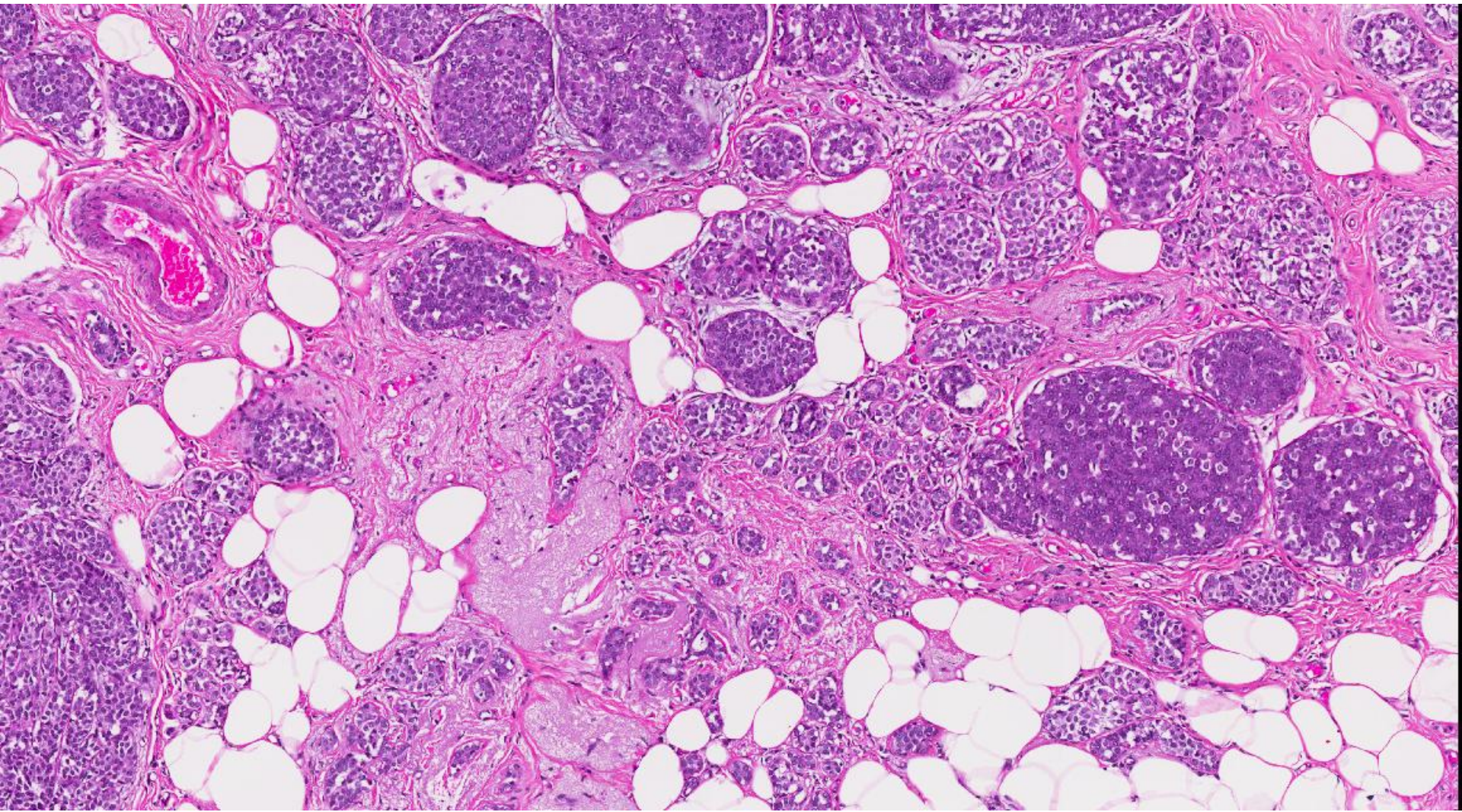


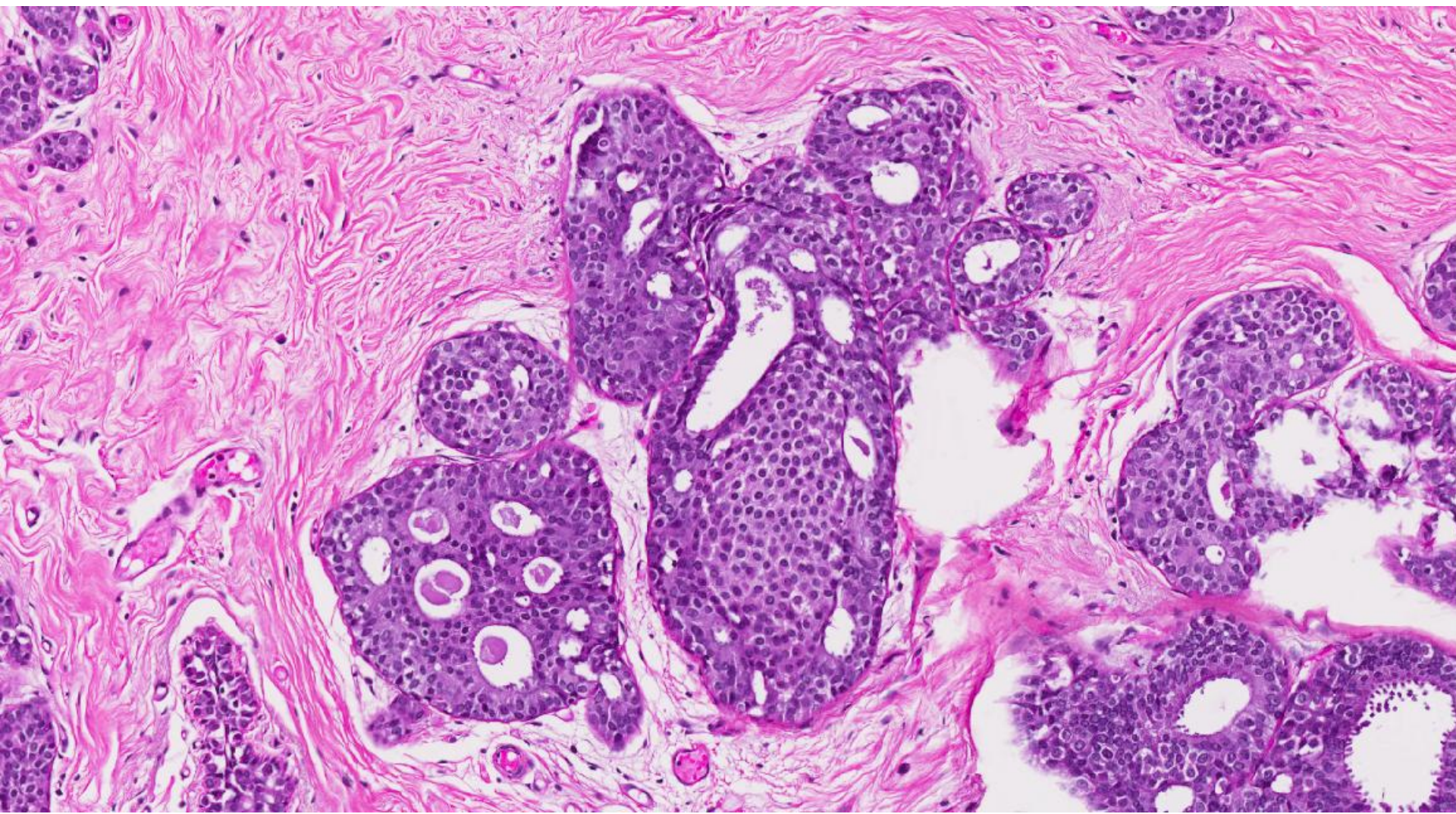


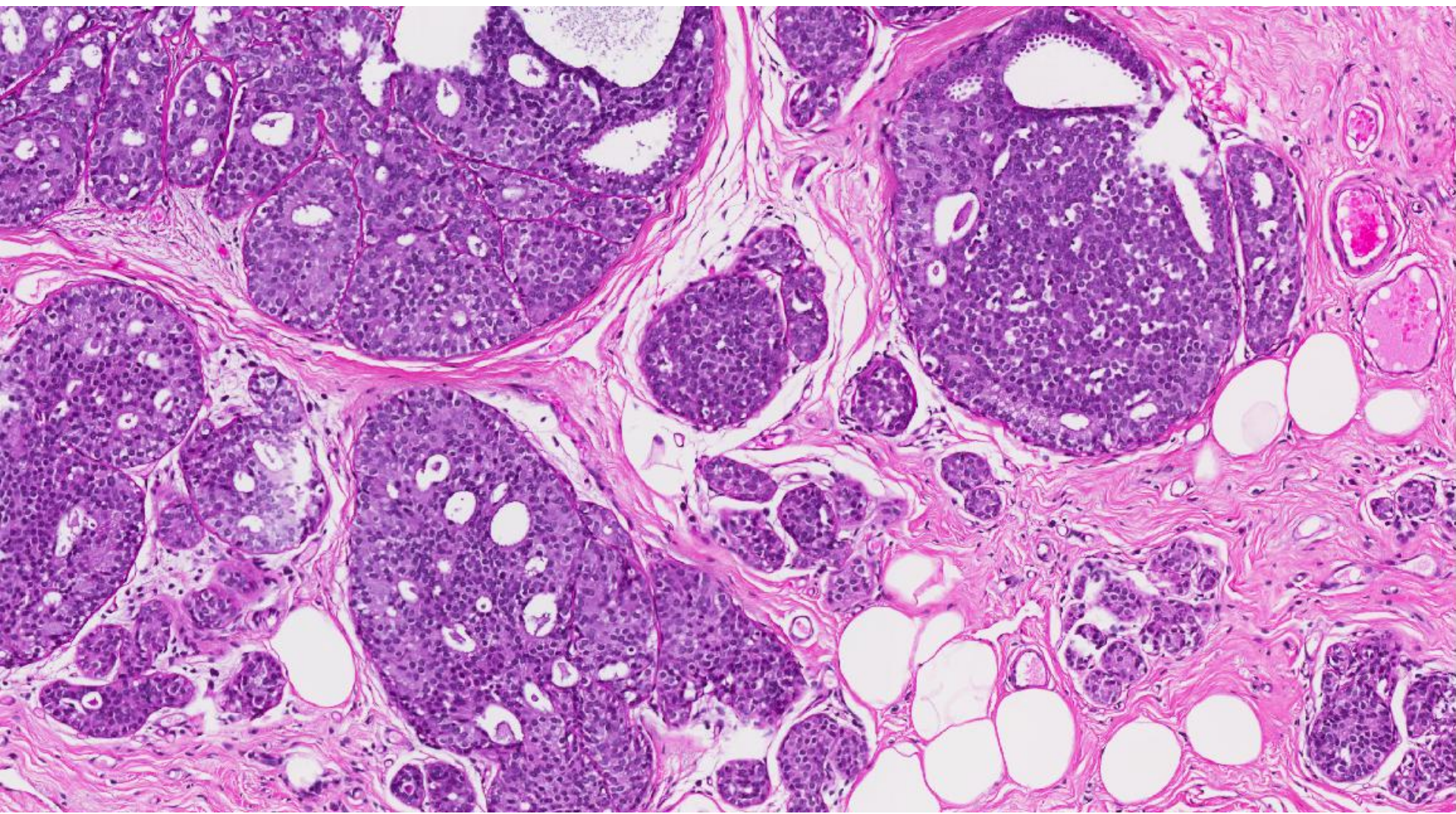


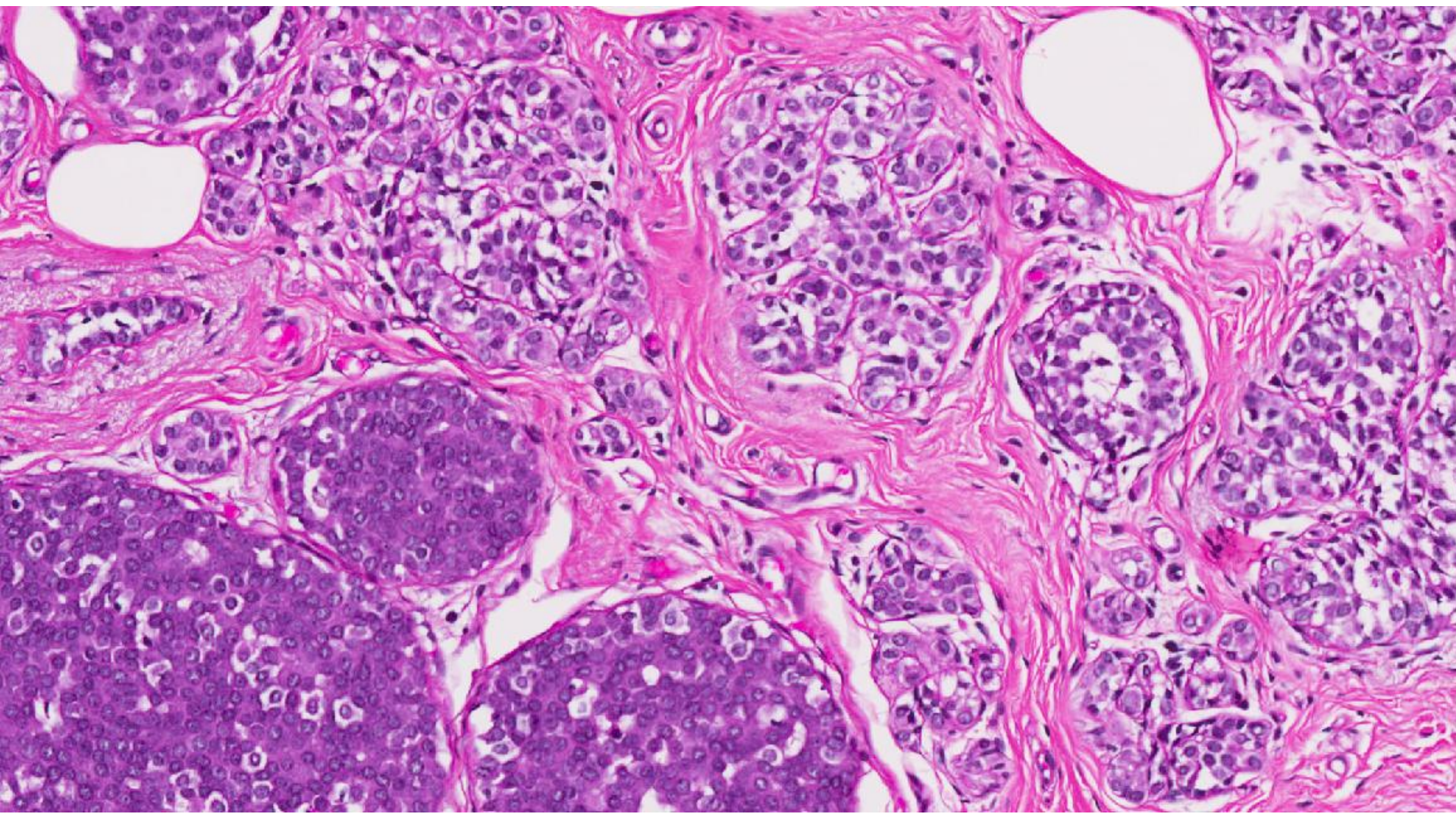


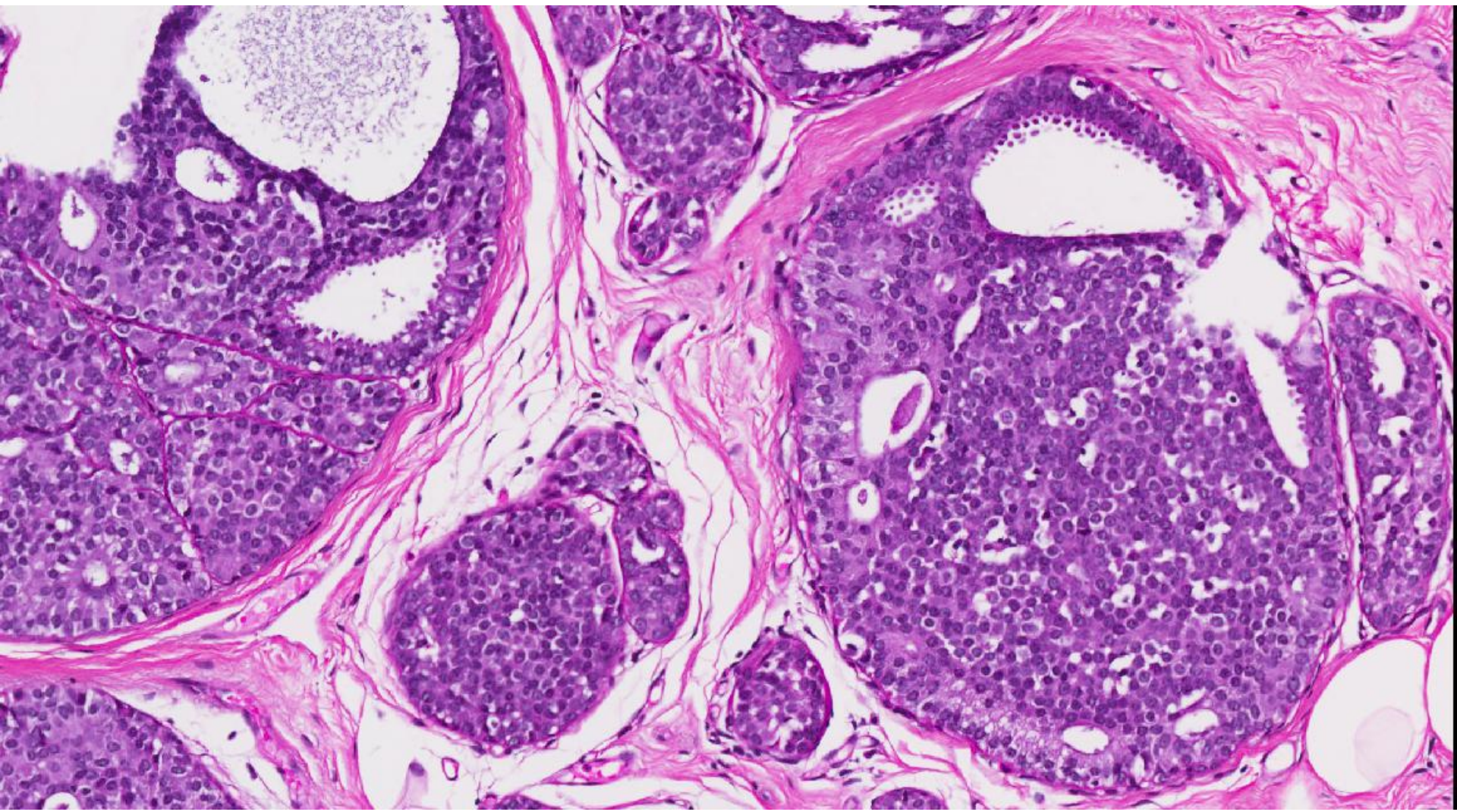




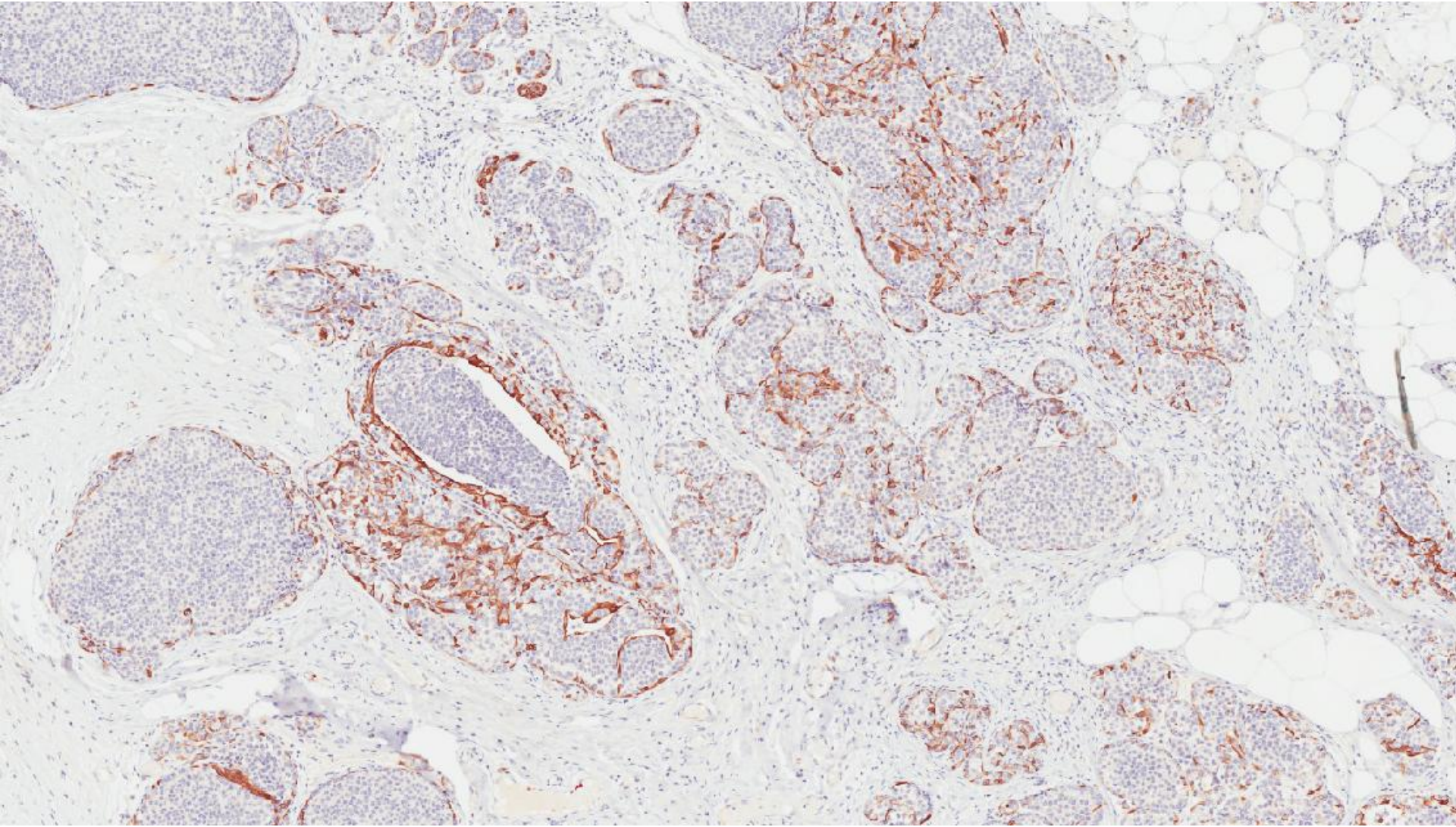




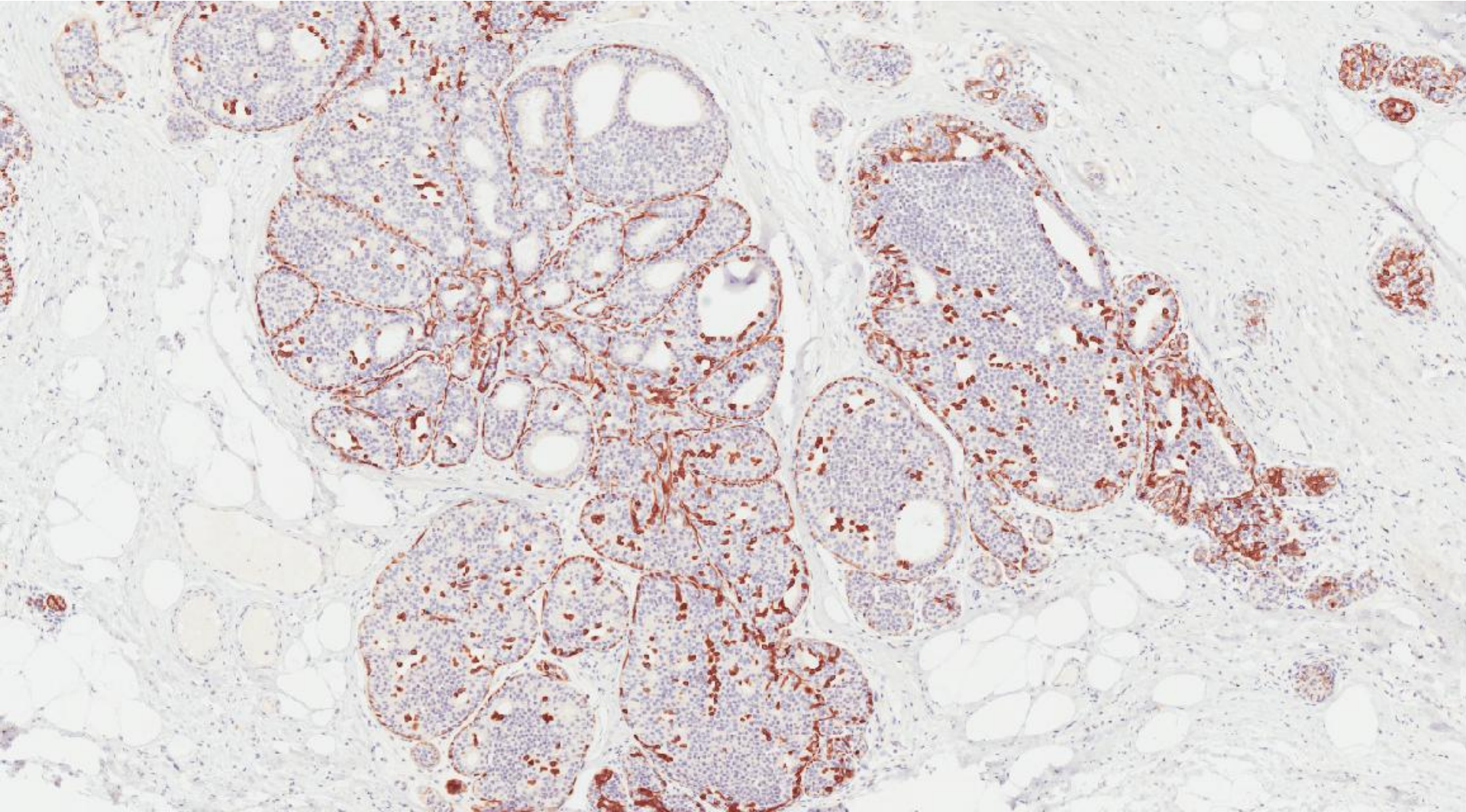




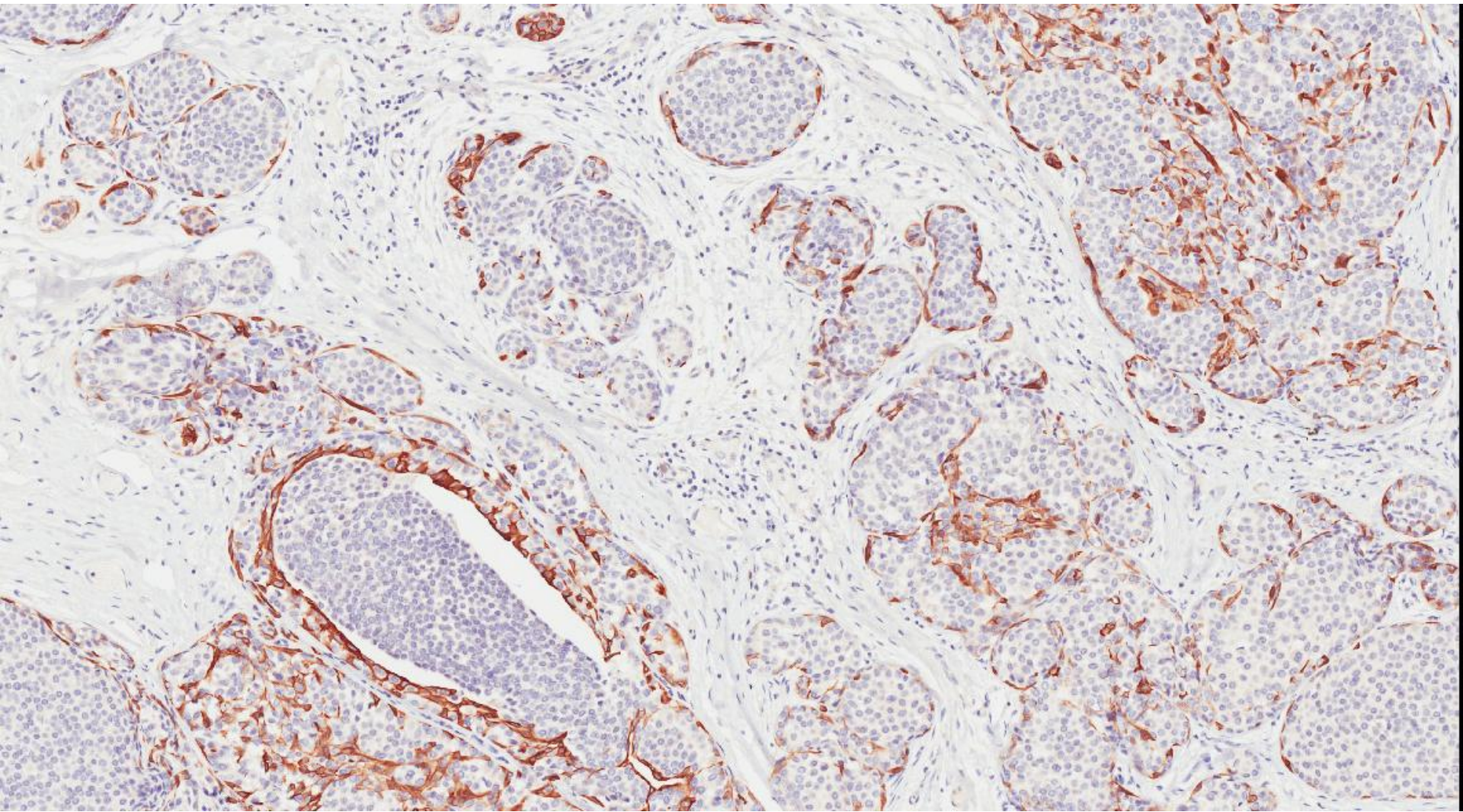
CK 14



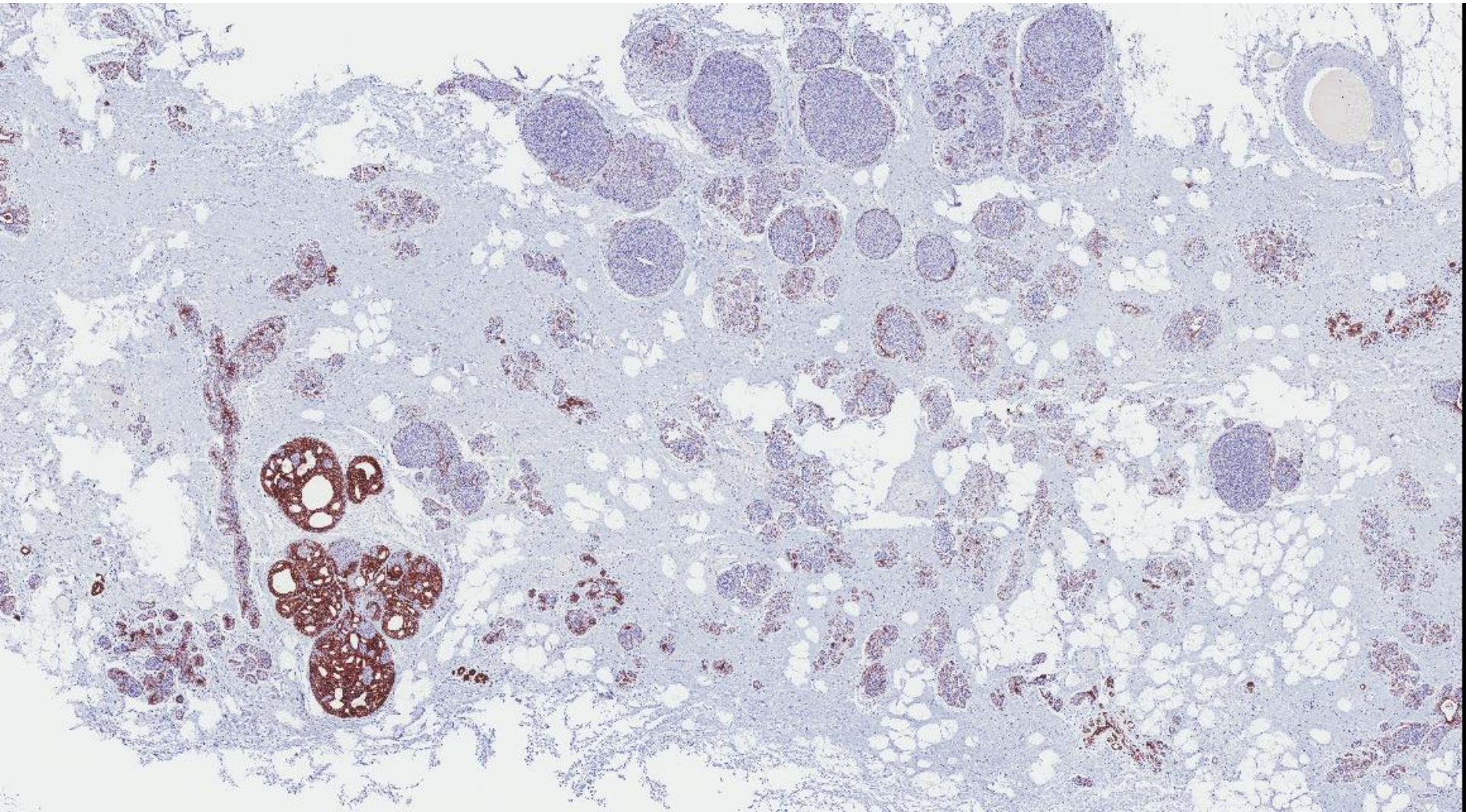
CK 14



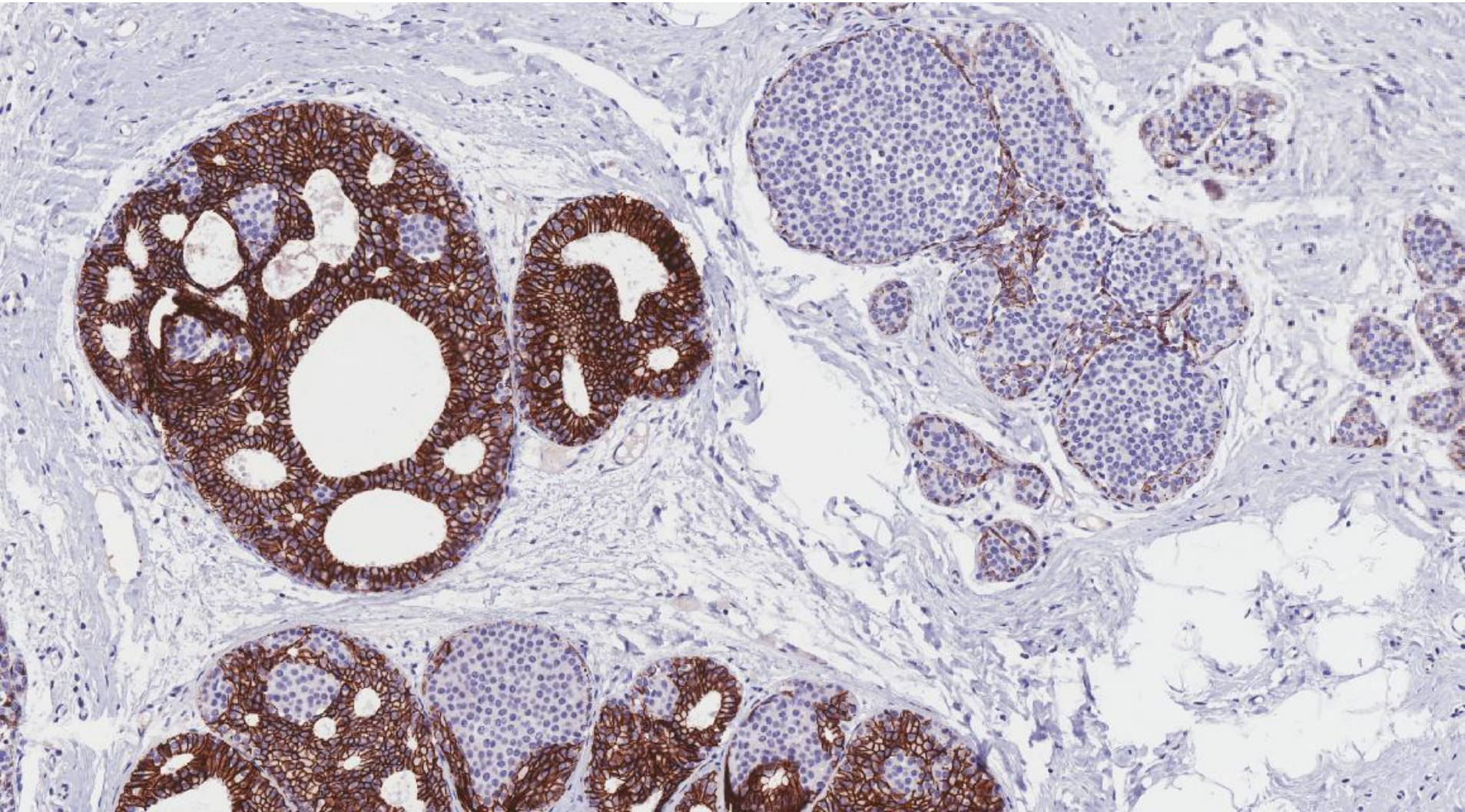
CK 14



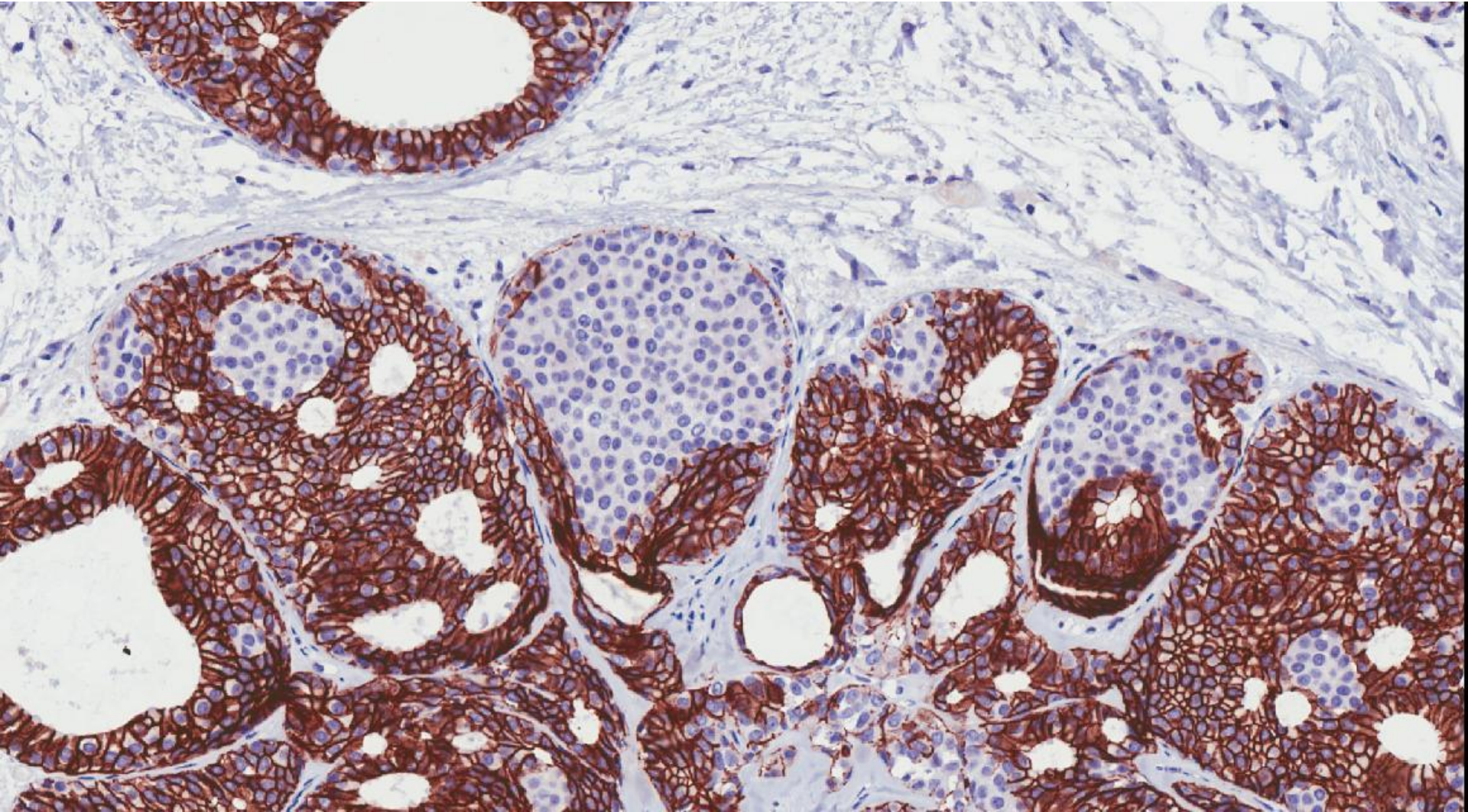
E-cadherin



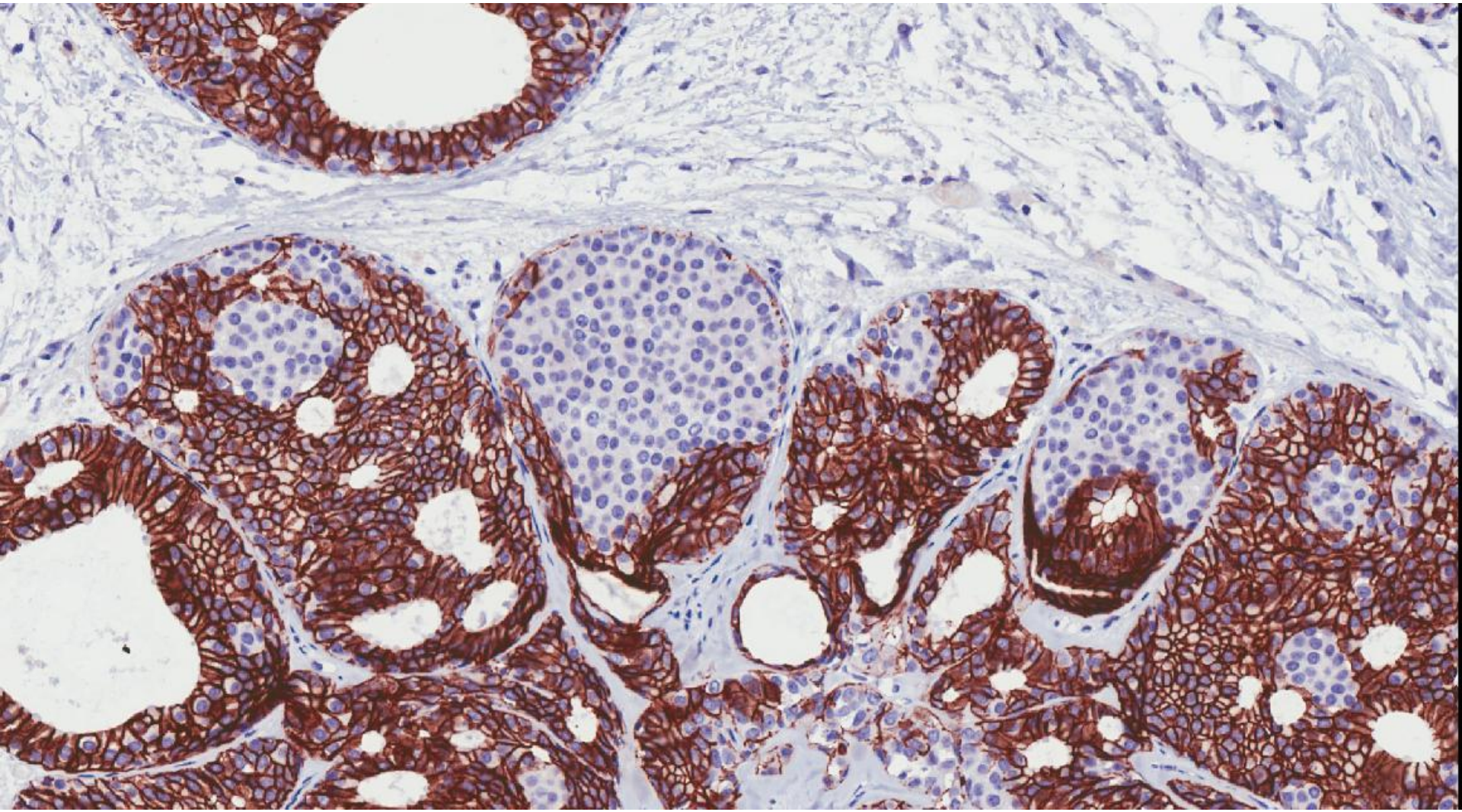
E-cadherin



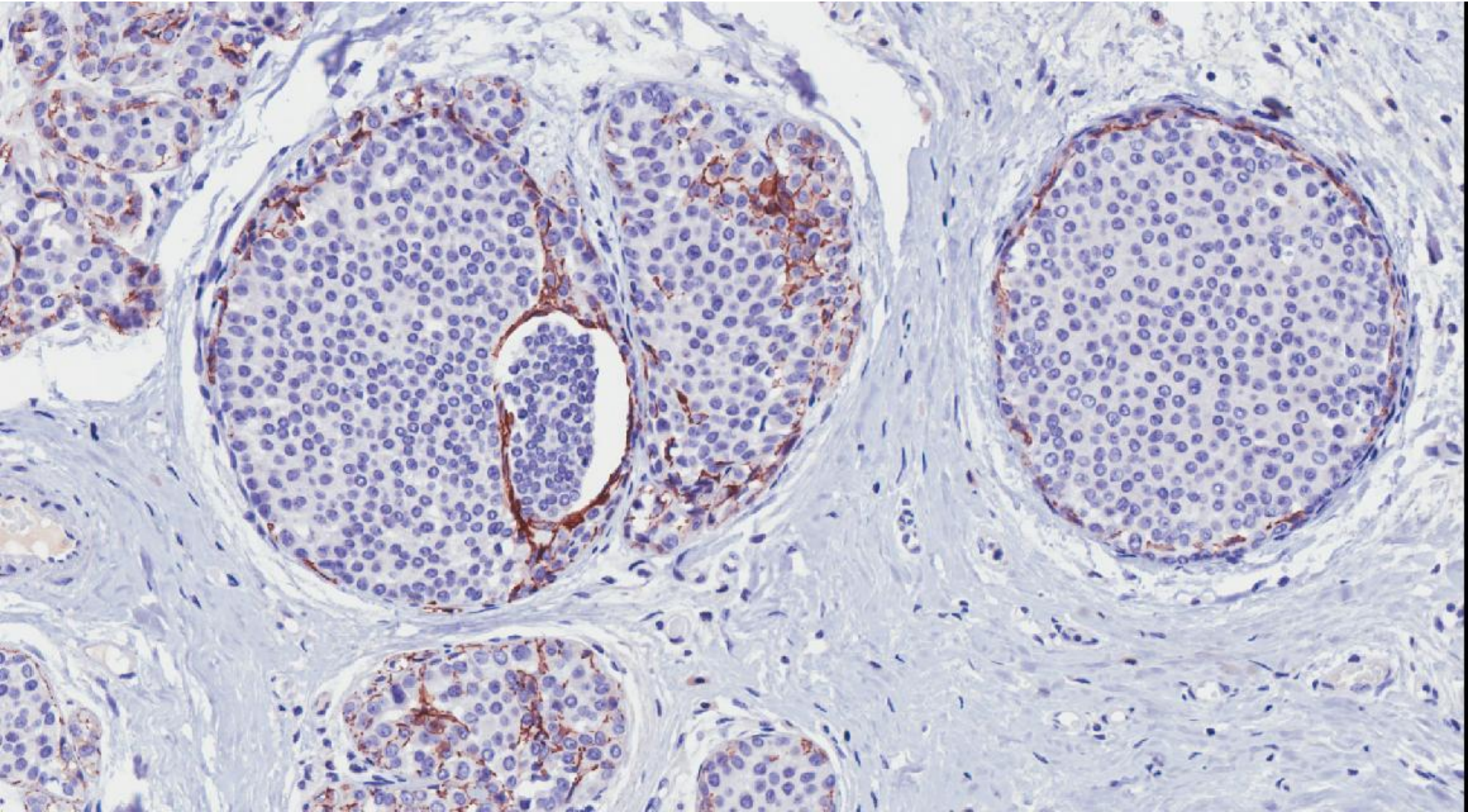
E-cadherin



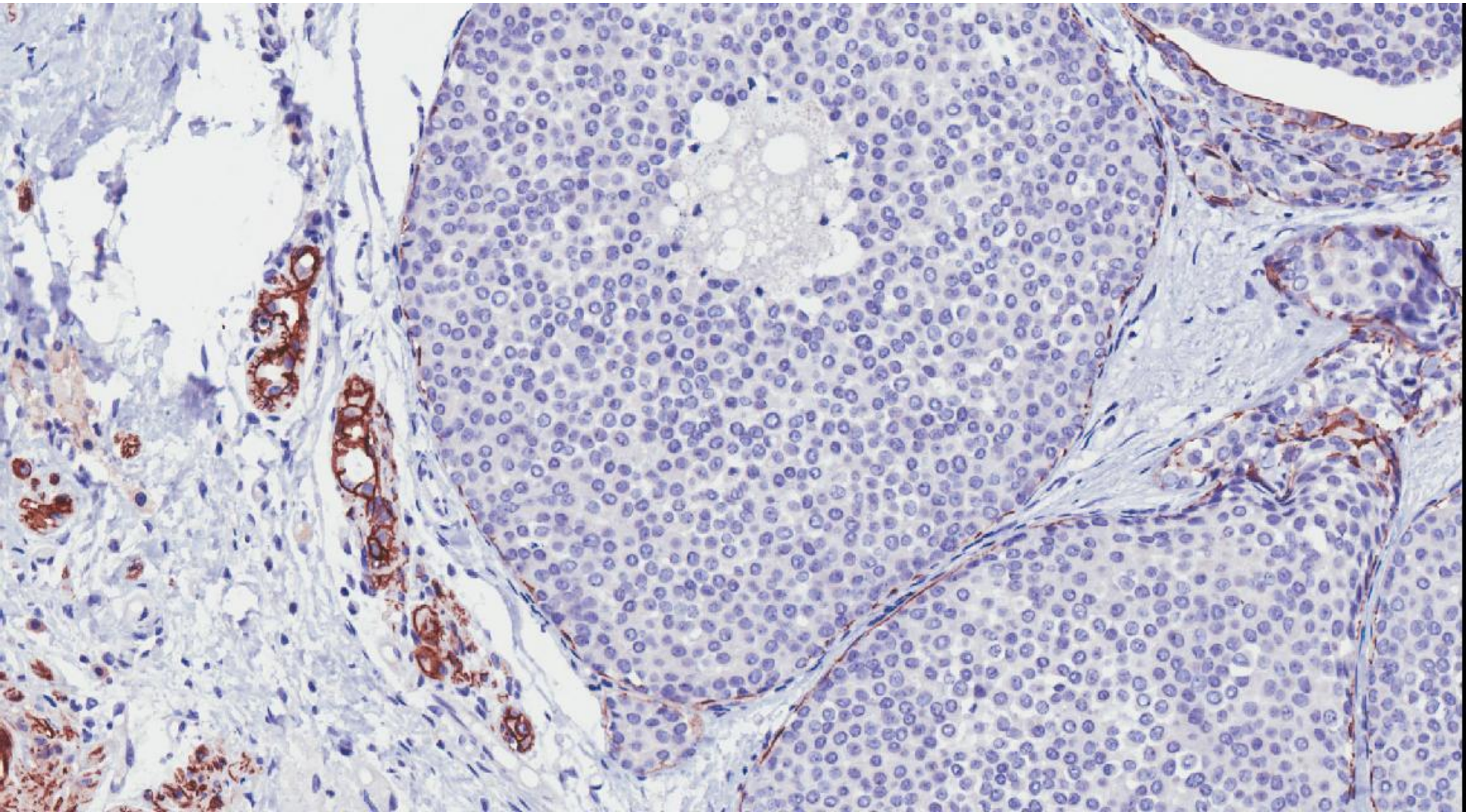
E-cadherin



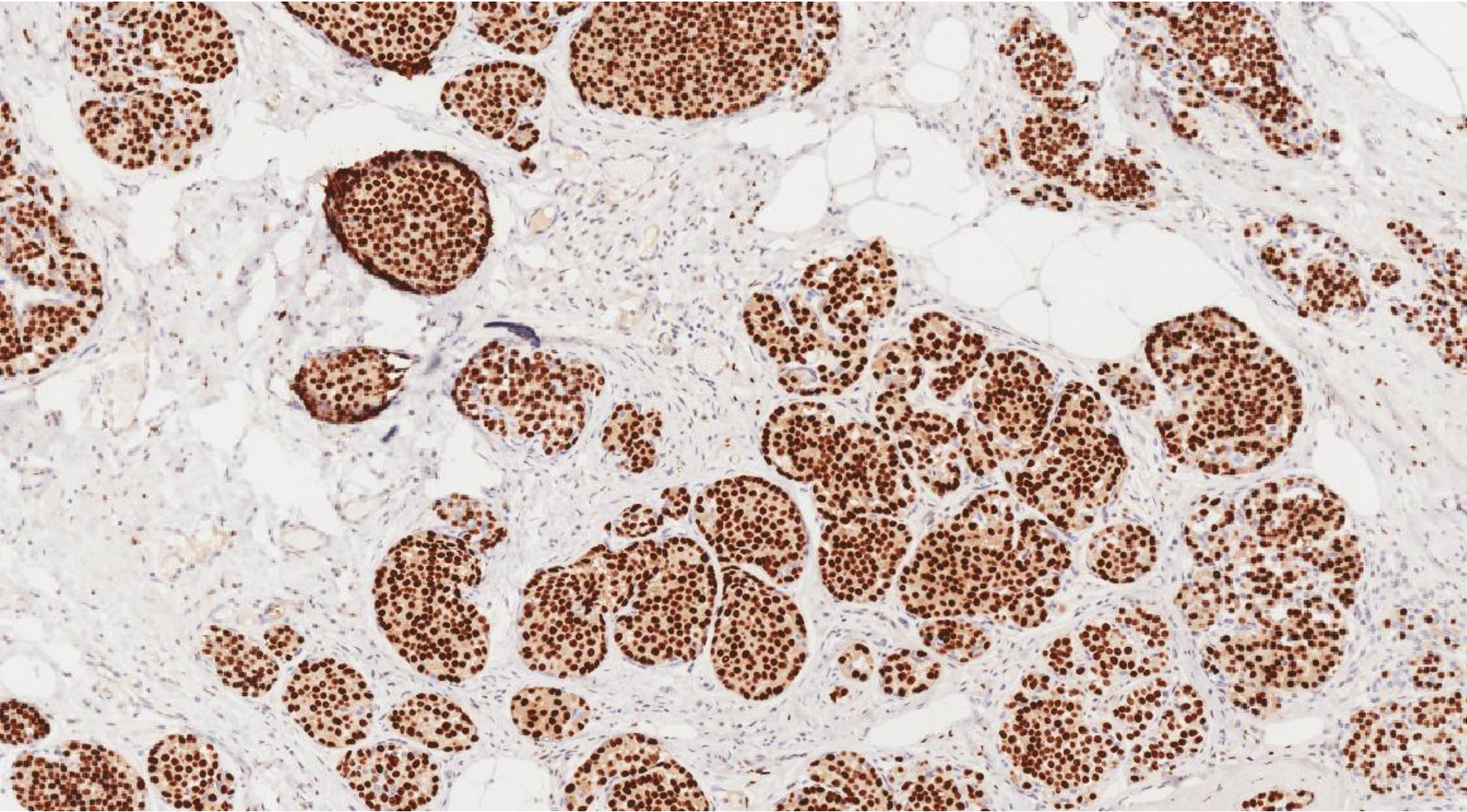
E-cadherin



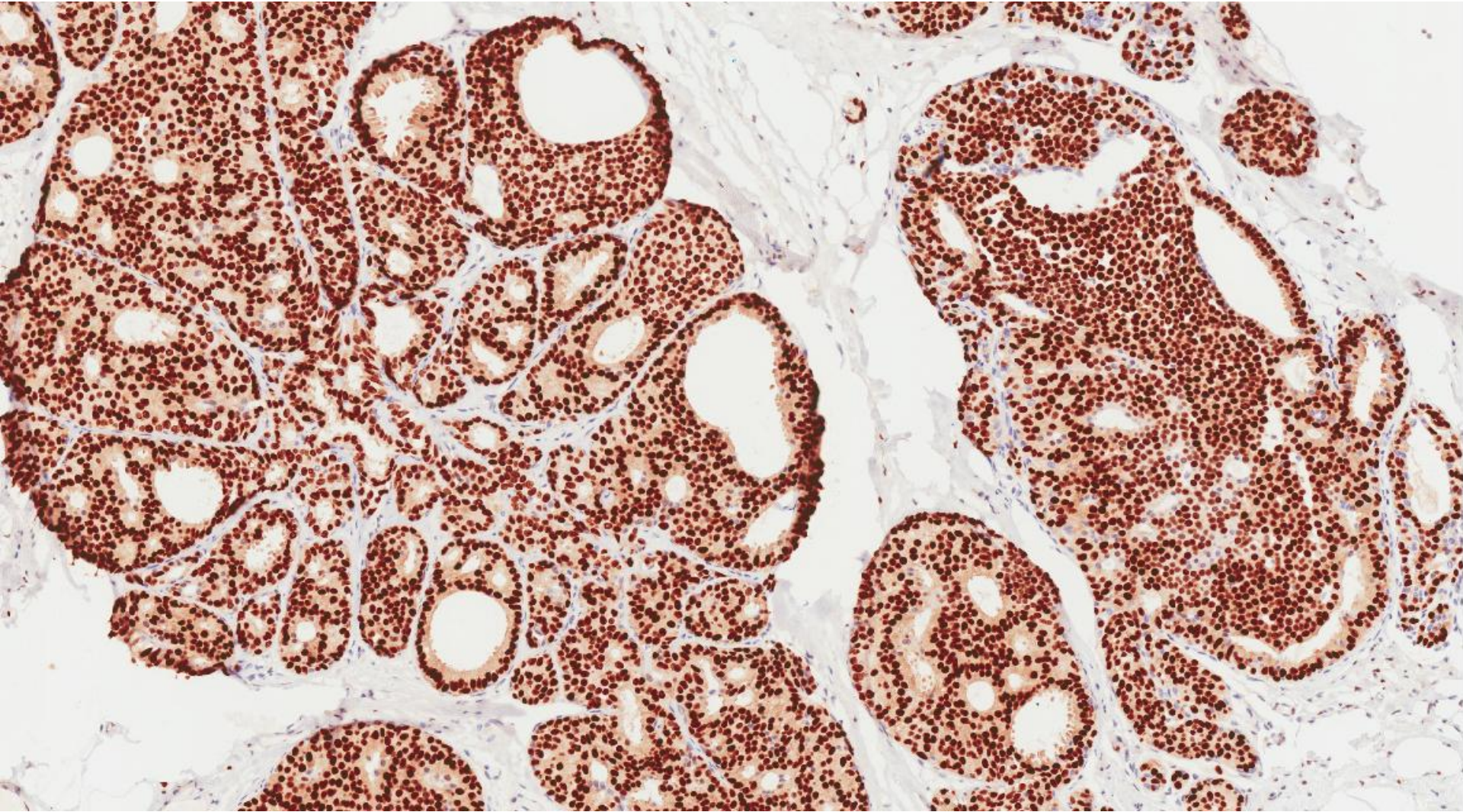
E-cadherin



ER



ER



Diagnosis

Mixed ductal carcinoma in situ, low and intermediate nuclear grade, with focal necrosis and calcifications, with
Lobular carcinoma in situ

DCIS and LCIS

- Both DCIS (low nuclear grade) and LCIS belong to the low grade neoplasia family of tumours.

Am J Surg Pathol. 2008 Apr;32(4):513-23.